

V&V Reference Report

L2 ASCDS Version : 10.4.1

Observation 17472 - L2 Version 1
Chandra X-Ray Center

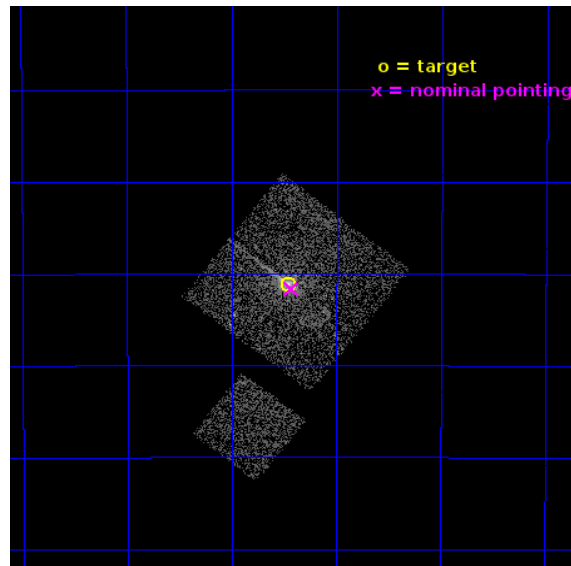
L2 Processing Date : Sep 26 2015

Contents

1	Front	2
2	OBI	3
2.1	OBI	3
2.1.1	Images	3
2.1.2	Bias	3
2.1.3	Parameters	4
2.1.4	Events	4
2.2	Compared Parameters	5
2.3	Aspect	6
2.4	Star Slots	9
2.4.1	Slot 3	9
2.4.2	Slot 4	10
2.4.3	Slot 5	11
2.4.4	Slot 6	12
2.4.5	Slot 7	13
2.5	FID Slots	14
2.5.1	Slot 0	14
2.5.2	Slot 1	15
2.5.3	Slot 2	16
A	Summary	17
A.1	Status	17
A.2	Comments	17

1 Front

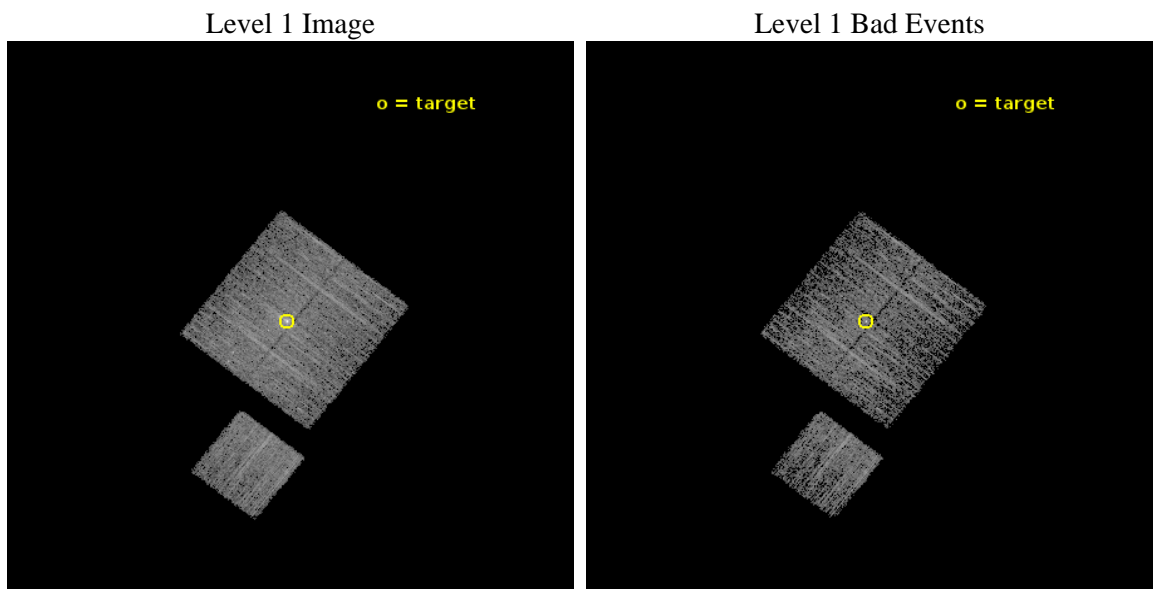
seq_num	703149	Sequence number
obs_id	17472	Observation id
title	Ongoing Monitoring of the Cen A jet and ULX population	Proposal ti
observer	Dr. Stephen Murray	Principal investigator
object	Centaurus A	Source name
dtcycle	0	
cycle	P	events from which exps? Prim/Second/Both
ra_targ	201.365	Observer's specified target RA [deg]
dec_targ	-43.019167	Observer's specified target Dec [deg]
ra_nom	201.35776203561	Nominal RA [deg]
dec_nom	-43.027570334862	Nominal Dec [deg]
roll_nom	218.0037733161	Nominal Roll [deg]
revision	1	Processing version of data
ontime	4407.306355834	Sum of GTIs [s]
livetime	4349.7216536833	Livetime [s]
ontime0	4407.1832358837	Sum of GTIs [s]
ontime1	4407.2242758274	Sum of GTIs [s]
ontime2	4407.2653158903	Sum of GTIs [s]
ontime3	4407.306355834	Sum of GTIs [s]
ontime6	4407.1421958208	Sum of GTIs [s]
l2events	17671	Number of level 2 events



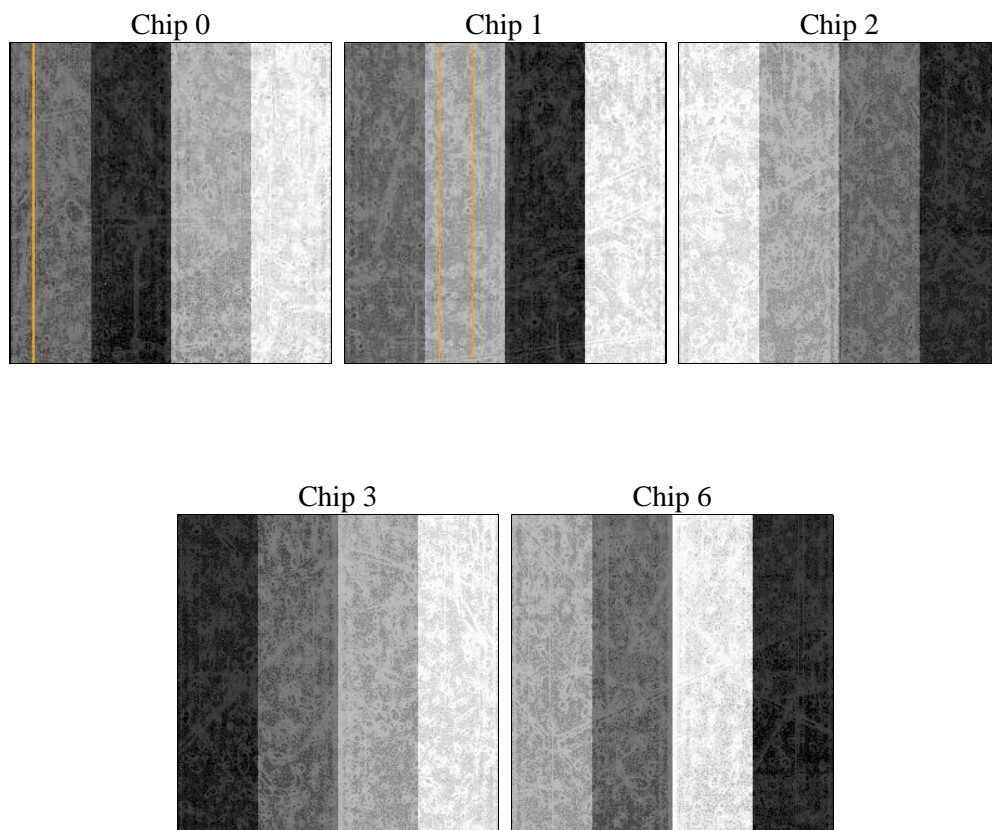
2 OBI

2.1 OBI

2.1.1 Images



2.1.2 Bias



2.1.3 Parameters

obi_num	0	Obi number	sched_exp_time	5000.000000	[s] Scheduled observation exposure time
ascdsver	10.4.1	Processing system revision	ontime	4407.306355834	Sum of GTIs [s]
caldsver	4.6.8	 	ontime0	4407.1832358837	Sum of GTIs [s]
date	2015-09-26T13:20:21	Date and time of file creation	ontime1	4407.2242758274	Sum of GTIs [s]
revision	1	Processing version of data	ontime2	4407.2653158903	Sum of GTIs [s]
			ontime3	4407.306355834	Sum of GTIs [s]
			ontime6	4407.1421958208	Sum of GTIs [s]
			l1events	124349	Number of level 1 events

2.1.4 Events

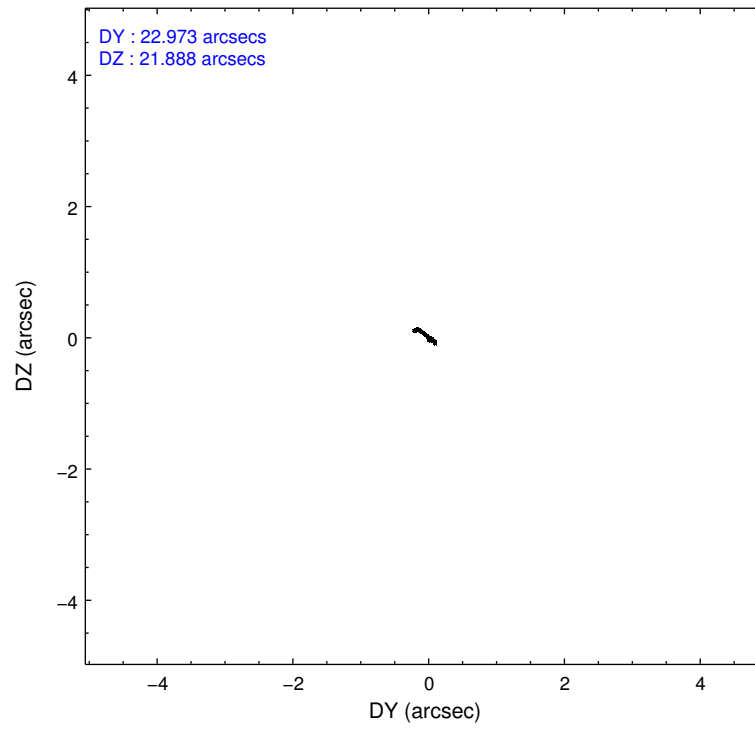
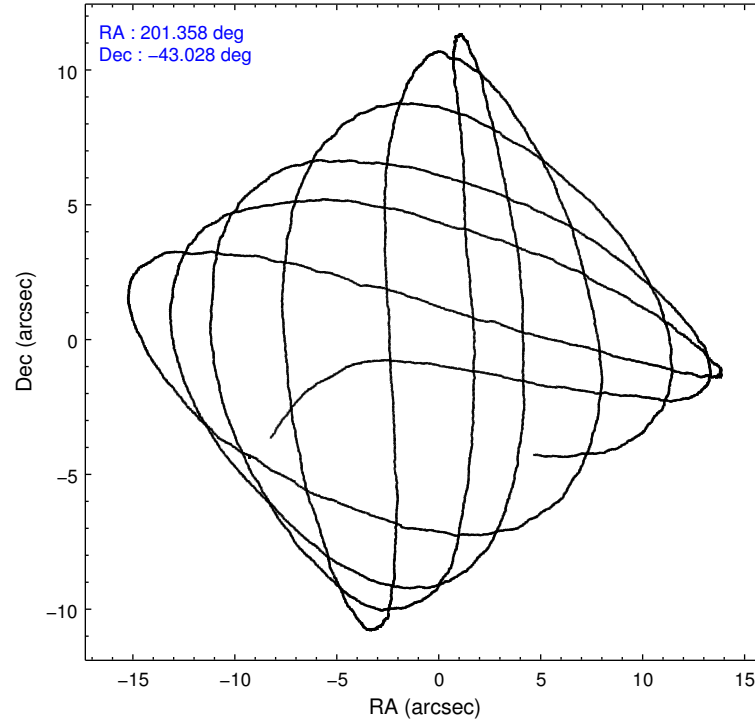
	ccd 0	ccd 1	ccd 2	ccd 3	ccd 6
level 1 events	22455	22630	24403	29305	25556
rejected events	19098	18925	20706	22801	22504
rejected %	85%	83%	84%	77%	88%

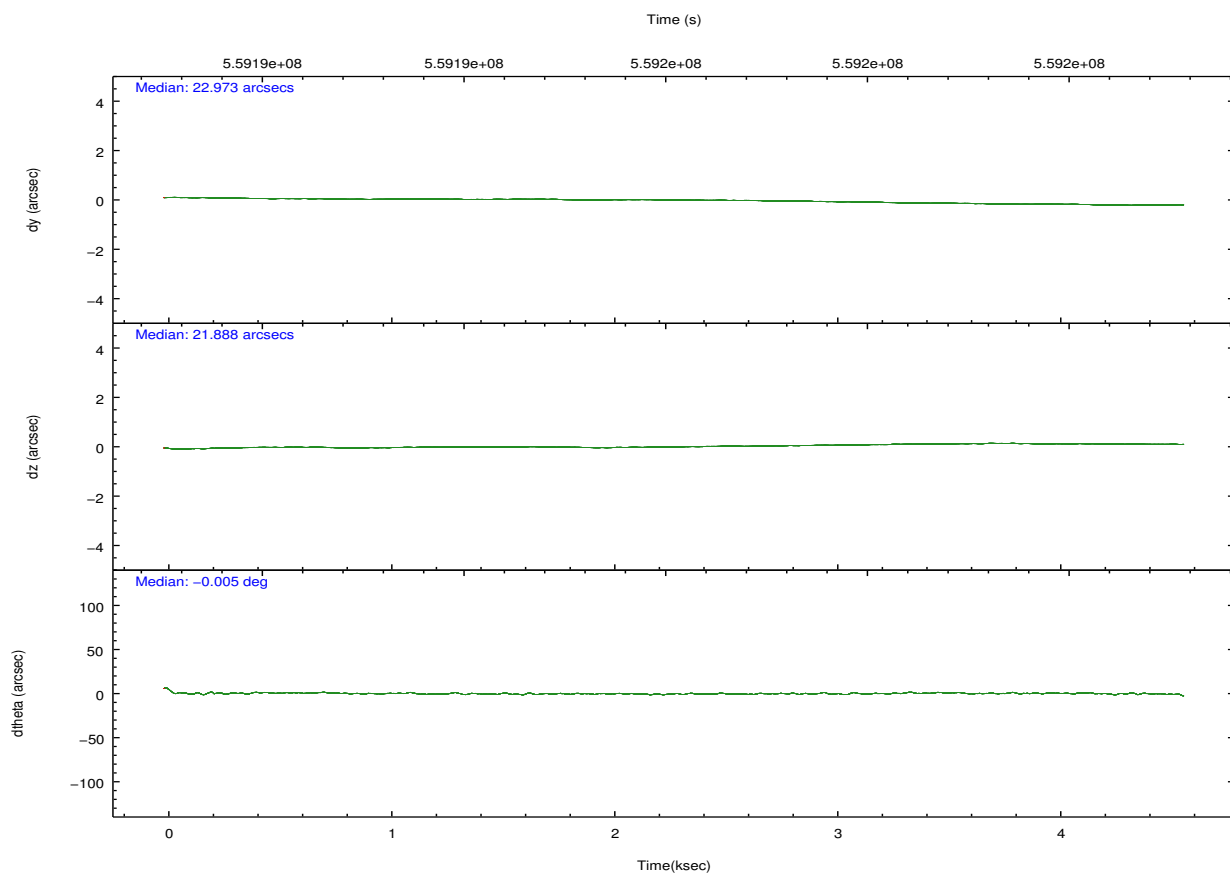
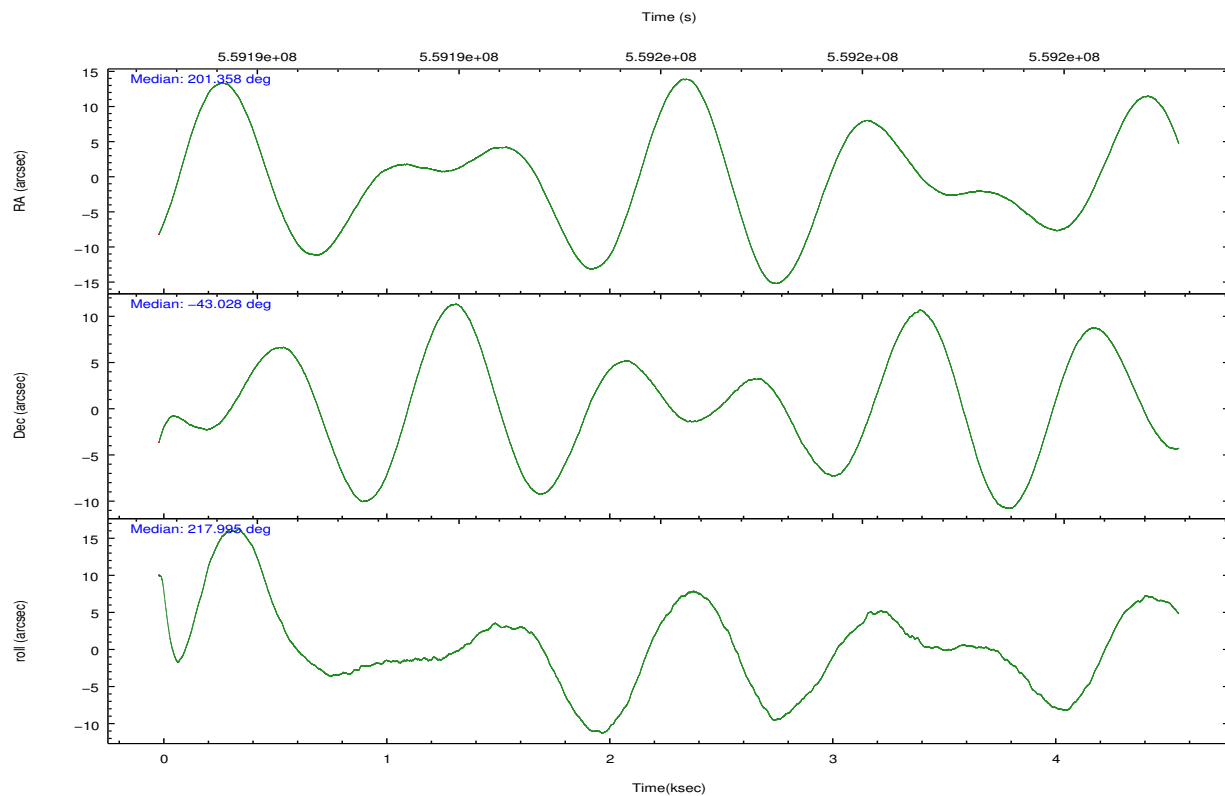
	ccd 0	ccd 1	ccd 2	ccd 3	ccd 6
grade 0 events	1416	1634	1858	3597	1094
	6%	7%	7%	12%	4%
grade 1 events	14	10	19	119	18
	0%	0%	0%	0%	0%
grade 2 events	809	820	761	1088	725
	3%	3%	3%	3%	2%
grade 3 events	312	314	269	477	286
	1%	1%	1%	1%	1%
grade 4 events	296	325	323	478	341
	1%	1%	1%	1%	1%
grade 5 events	1089	1164	1016	1393	1250
	4%	5%	4%	4%	4%
grade 6 events	570	677	550	961	661
	2%	2%	2%	3%	2%
grade 7 events	17949	17686	19607	21192	21181
	79%	78%	80%	72%	82%

2.2 Compared Parameters

Parameter	Planned	Actual	Parameter	Planned	Actual
Instrument	ACIS	ACIS	Obspar format version number	7	7
Detector	ACIS-01236	ACIS-01236	Obspar file type	PREDICTED	ACTUAL
Grating	NONE	NONE	Obspar update status	NONE	UPDATED
Data mode	FAINT	FAINT	CCD I0 on	Y	Y
Observation mode	POINTING	POINTING	CCD I1 on	Y	Y
[deg] Pointing RA	201.371541	201.3577620356083	CCD I2 on	Y	Y
[deg] Pointing Dec	-43.001951	-43.02757033486206	CCD I3 on	Y	Y
[deg] Pointing Roll	217.804463	218.0037733160976	CCD S0 on	N	N
[mm] SIM focus pos	-0.782348	-0.7809083437167272	CCD S1 on	N	N
[mm] SIM defocus	0	0.001439871863259334	CCD S2 on	O1	Y
[mm] SIM translation stage pos	-233.592463	-233.5874344608287	CCD S3 on	N	N
[mm] SIM translation stage offset	0	-0.005018542100998502	CCD S4 on	N	N
[s] Observation start time (MET)	559192932.184000	559191257.51492	CCD S5 on	N	N
Observation start date	2015-09-21T03:21:04	2015-09-21T02:54:17	Number of optional ACIS chips dropped	0	0
[s] Observation end time (MET)	559197932.184000	559197320.39026	On-chip summing requested	N	N
Observation end date	2015-09-21T04:44:24	2015-09-21T04:35:20	Subarray requested	NONE	NONE
Read mode	TIMED	TIMED	Alternating exposures requested	N	N
			[s] Primary exposure time	0.000000	3.1

2.3 Aspect



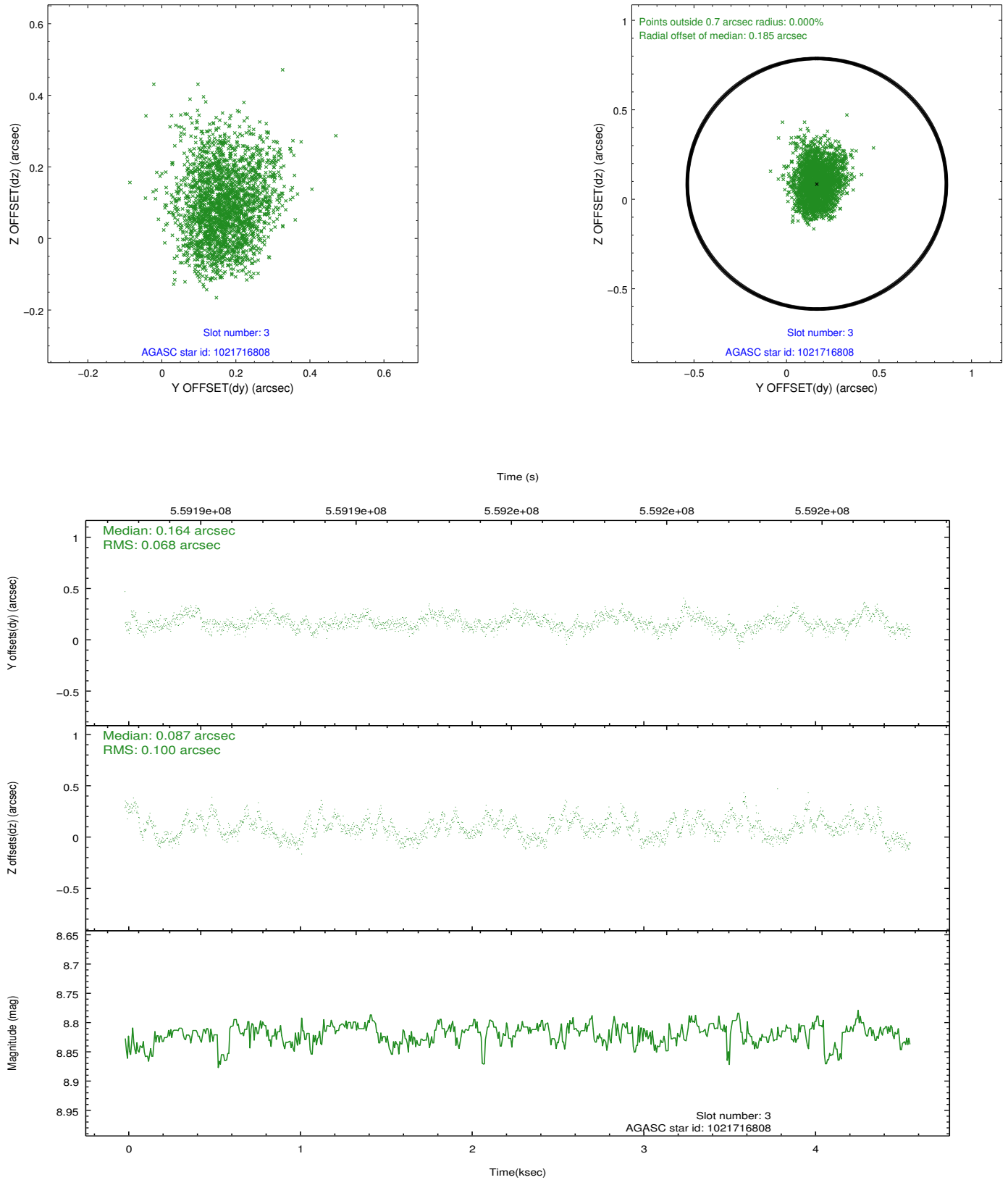


Slot Statistics

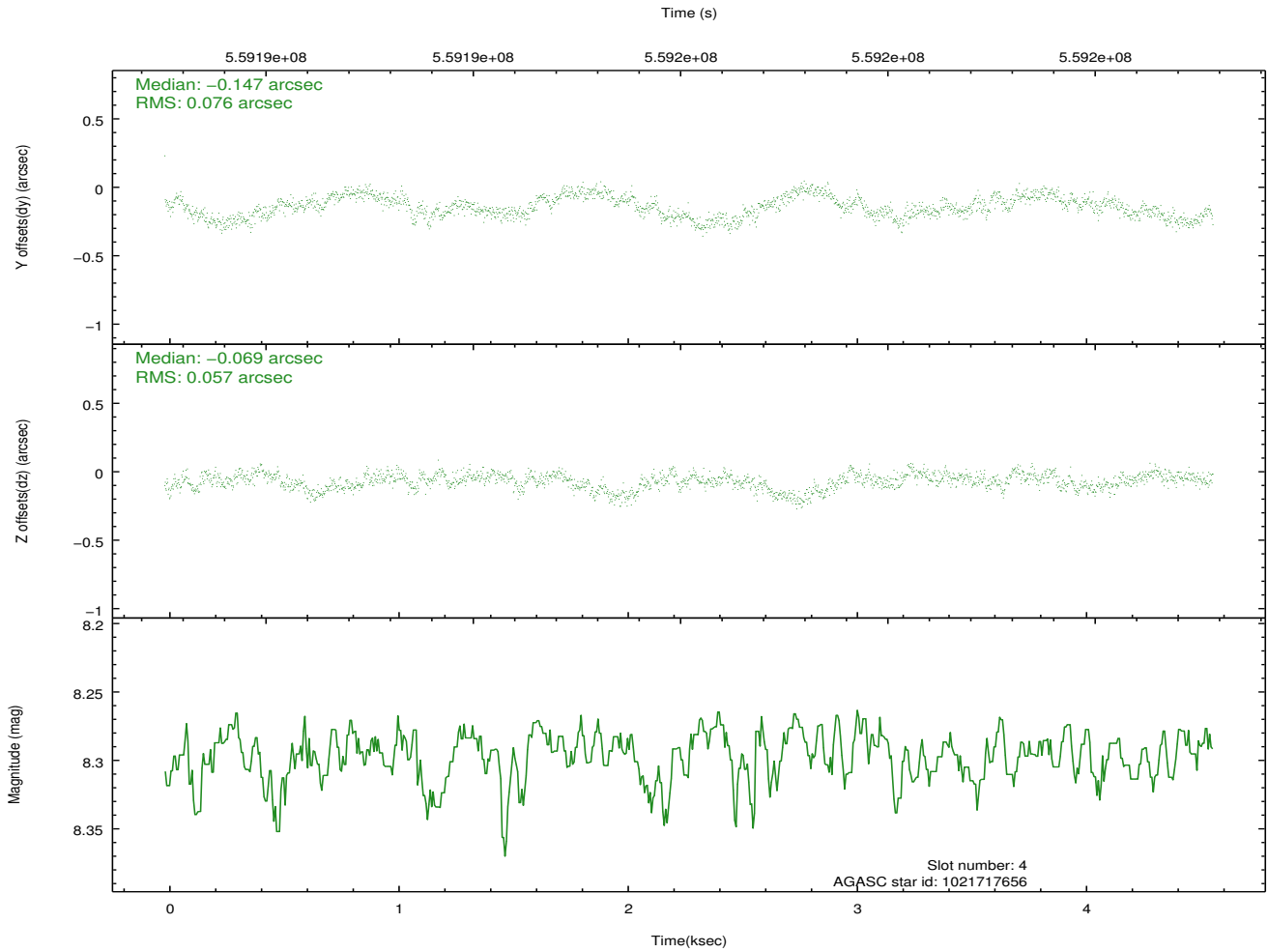
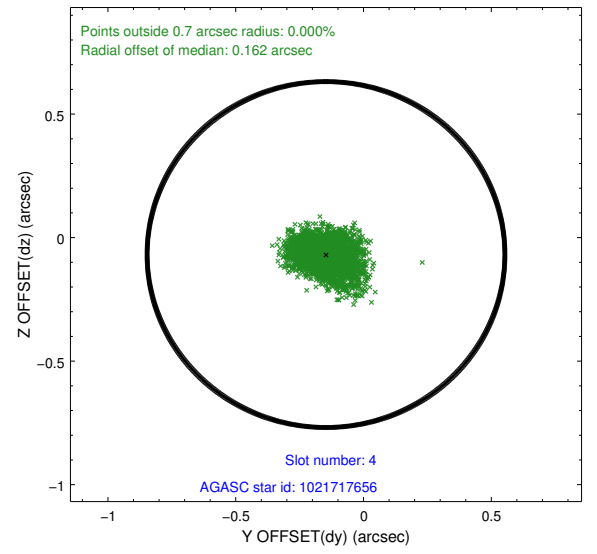
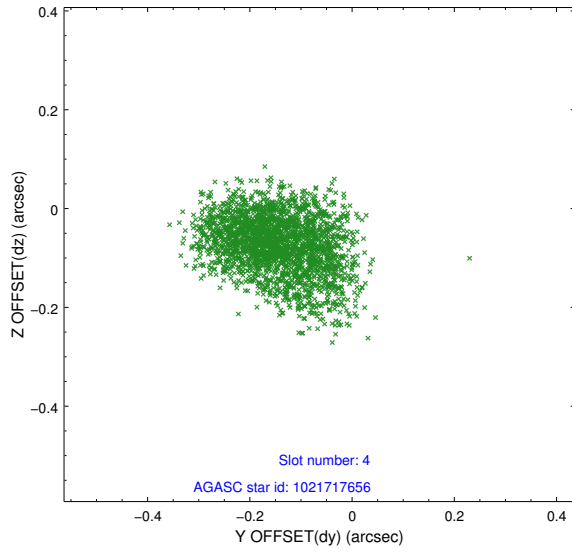
slot	status	used	id	mag	n_pts	med_dy	med_dz	dr1	dr2	ra	dec	mean_y	mean_z
0	FID		ACIS-I-1	7.24	1116	-0.010	-0.130	0.010	0.017	0.000000	0.000000	916.34	-845.77
1	FID		ACIS-I-4	7.18	1116	0.374	0.119	0.007	0.012	0.000000	0.000000	2137.41	1053.66
2	FID		ACIS-I-5	7.23	1116	-0.463	0.082	0.007	0.013	0.000000	0.000000	-1830.49	1052.80
3	GUIDE	used	1021716808	8.82	2232	0.164	0.087	0.128	0.208	200.901189	-42.531395	-48.61	-2100.70
4	GUIDE	used	1021717656	8.30	2232	-0.147	-0.069	0.103	0.160	201.139642	-43.082878	661.62	-144.05
5	GUIDE	used	1021719704	7.58	2232	-0.033	-0.093	0.087	0.144	200.511976	-43.050426	1901.99	-1238.92
6	GUIDE	used	1021721672	9.50	2230	-0.032	0.061	0.164	0.260	201.740358	-43.079729	-591.54	816.54
7	GUIDE	used	1022235840	9.41	2231	0.046	0.022	0.200	0.316	201.679306	-43.544276	563.52	2036.27

2.4 Star Slots

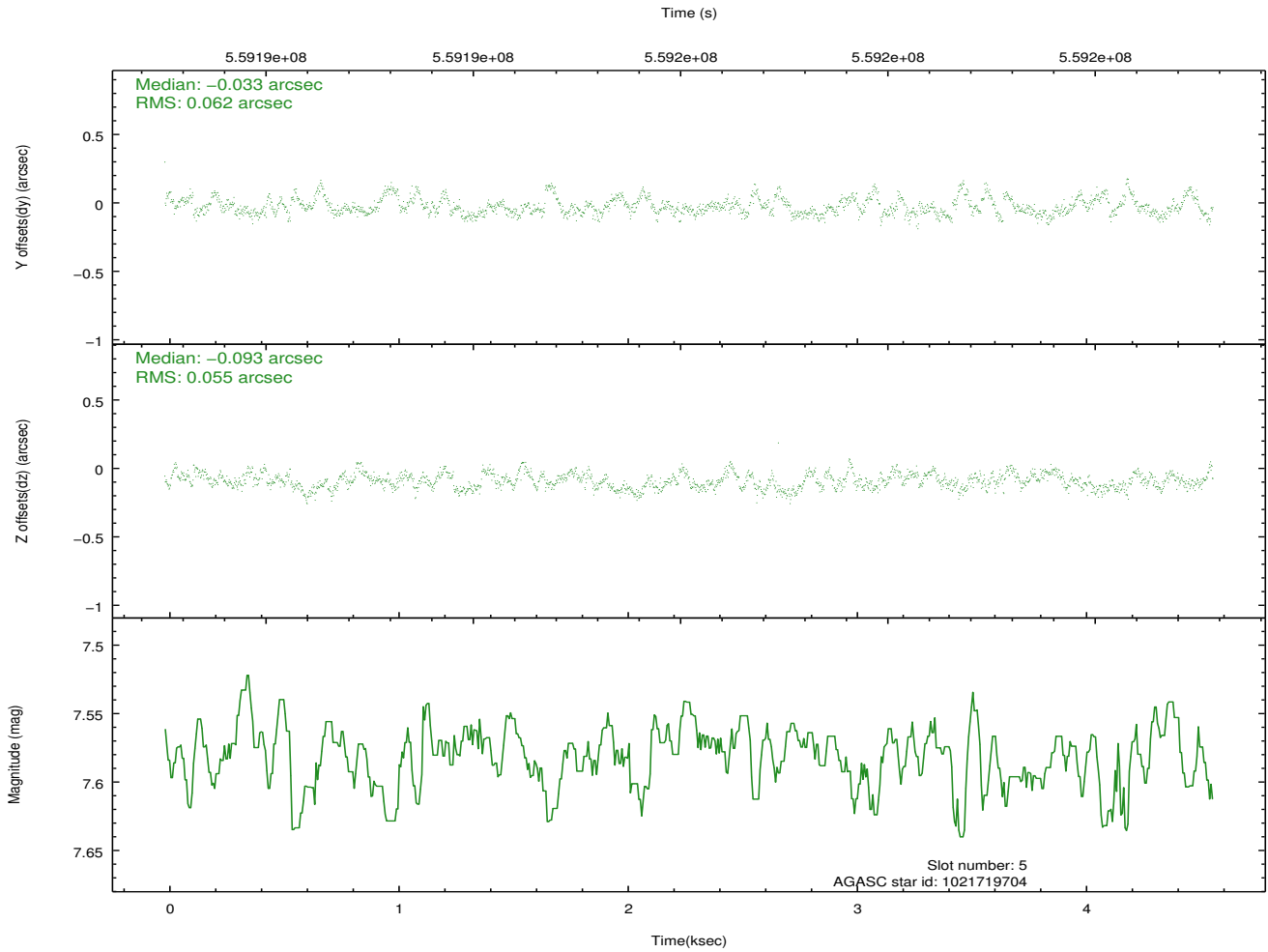
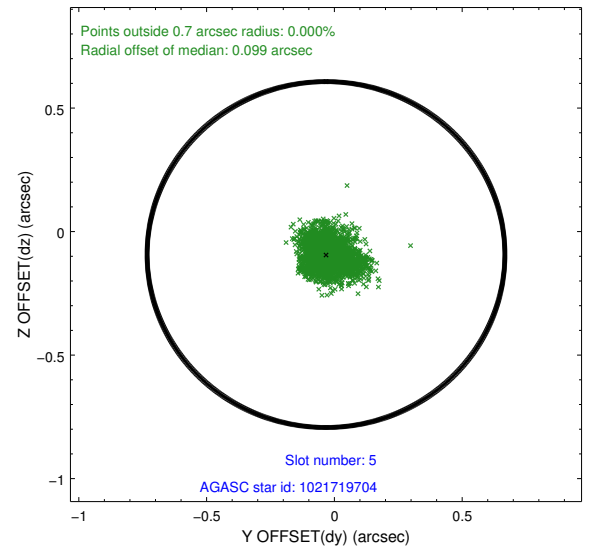
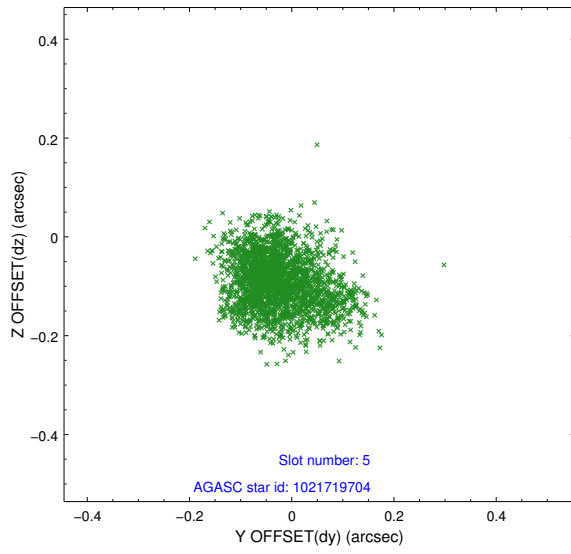
2.4.1 Slot 3



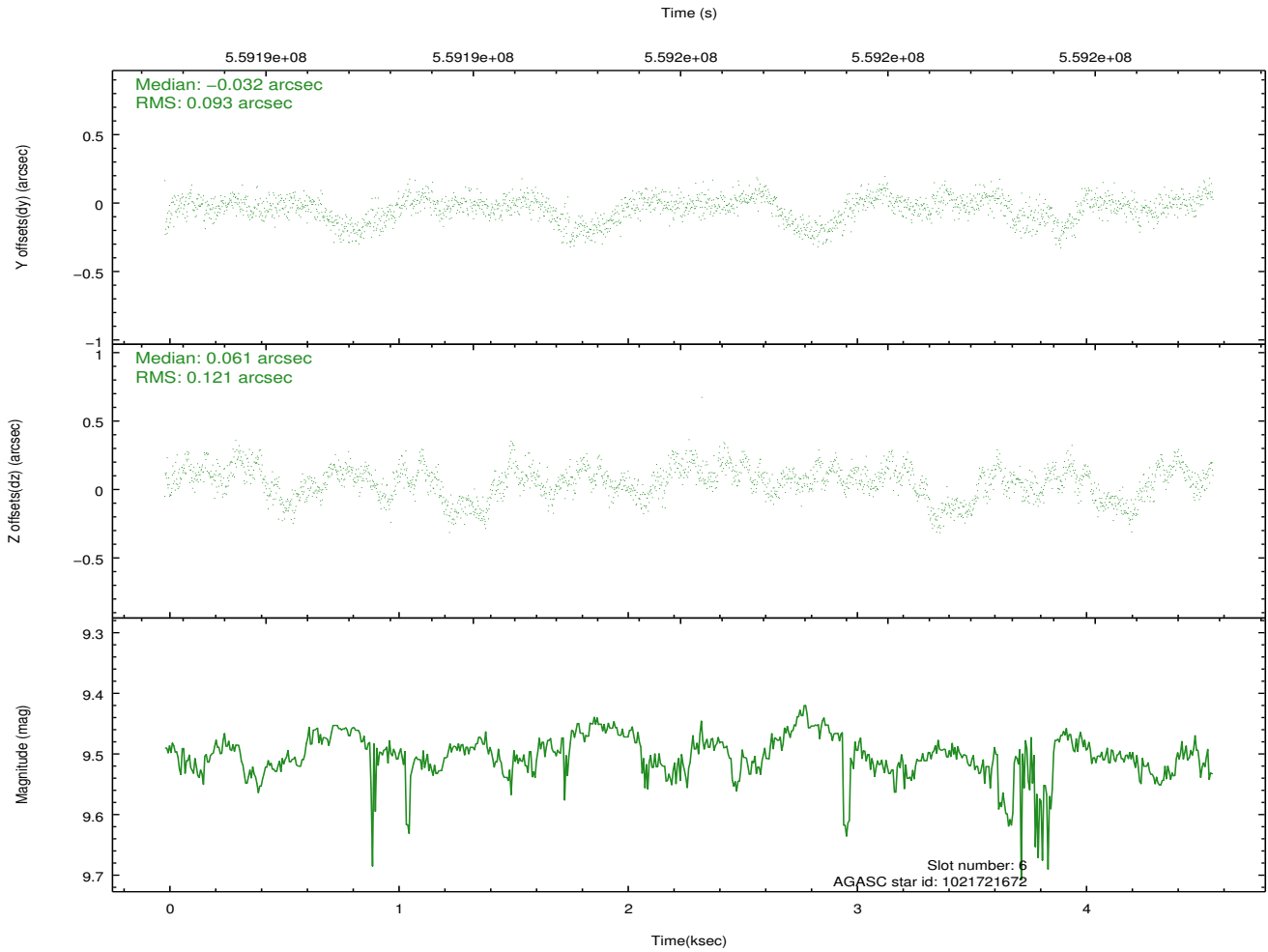
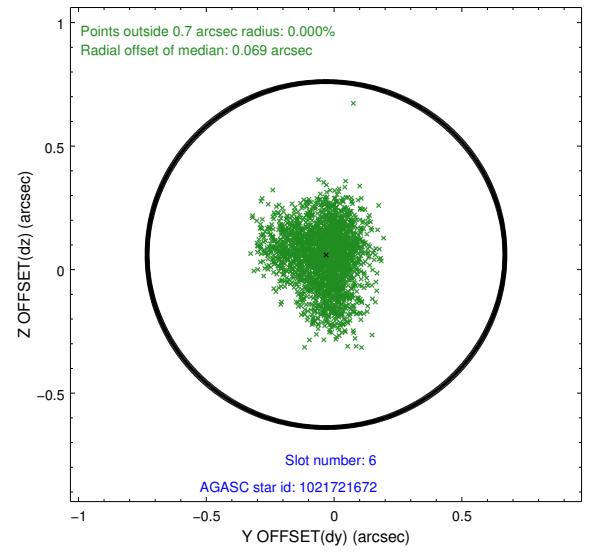
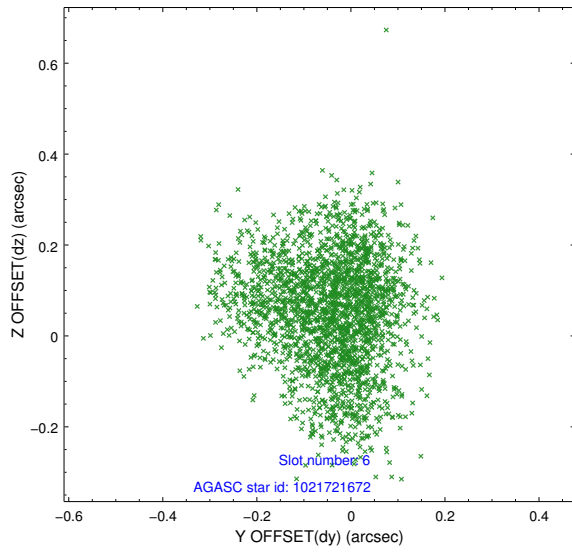
2.4.2 Slot 4



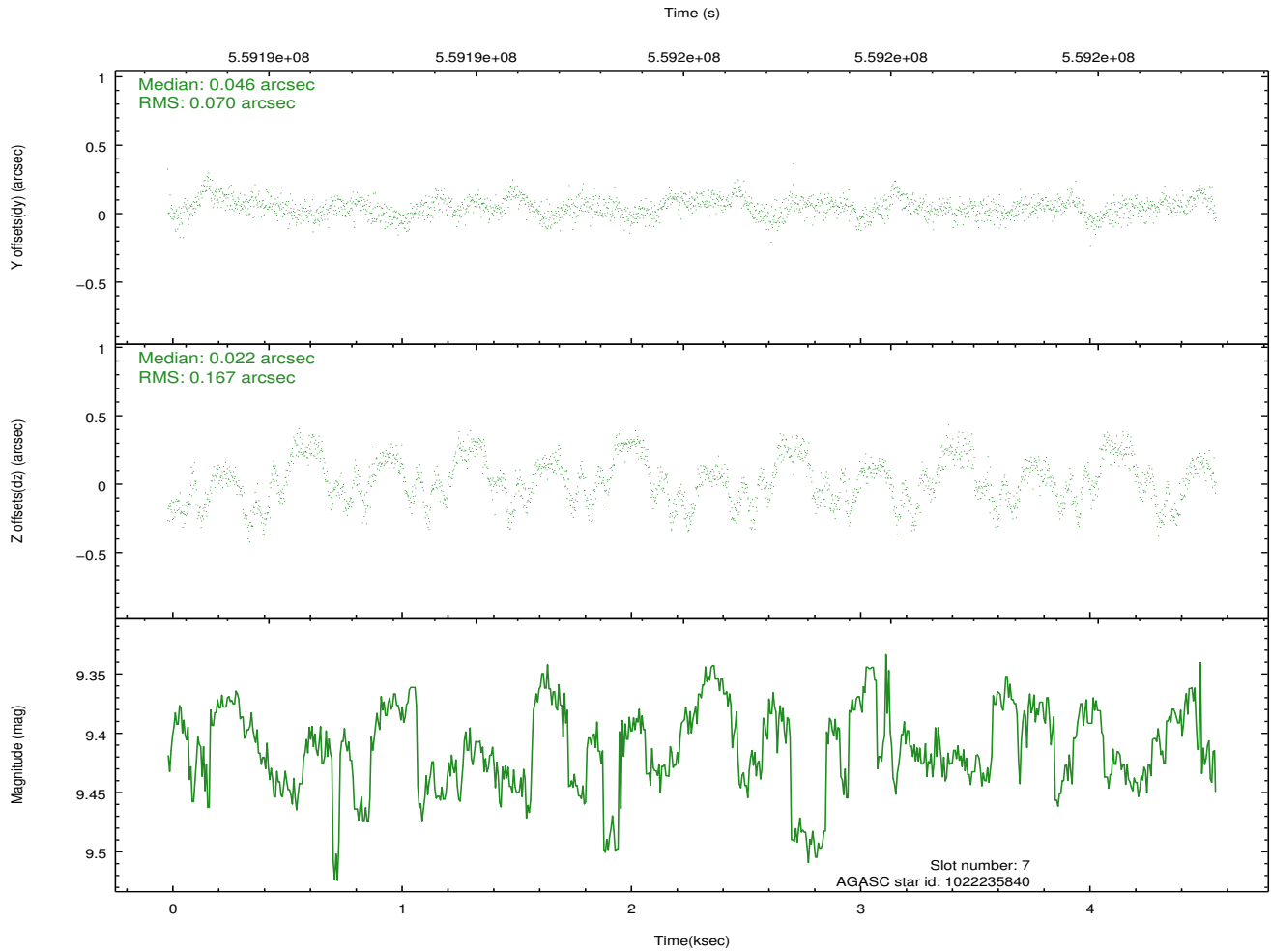
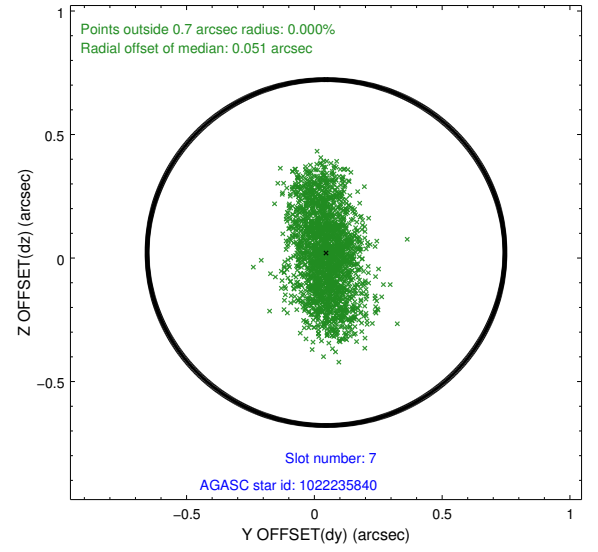
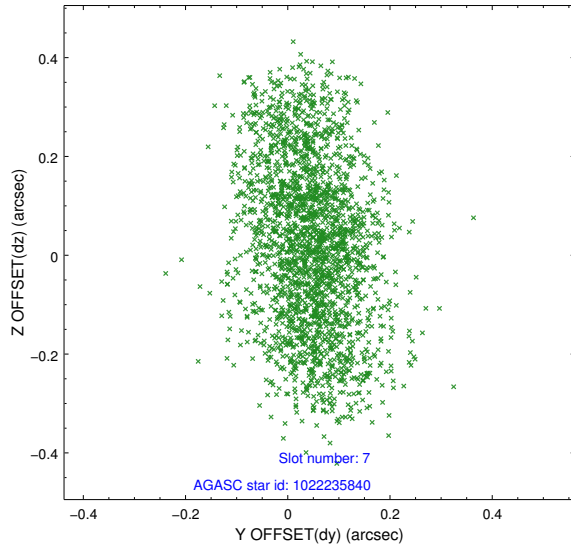
2.4.3 Slot 5



2.4.4 Slot 6

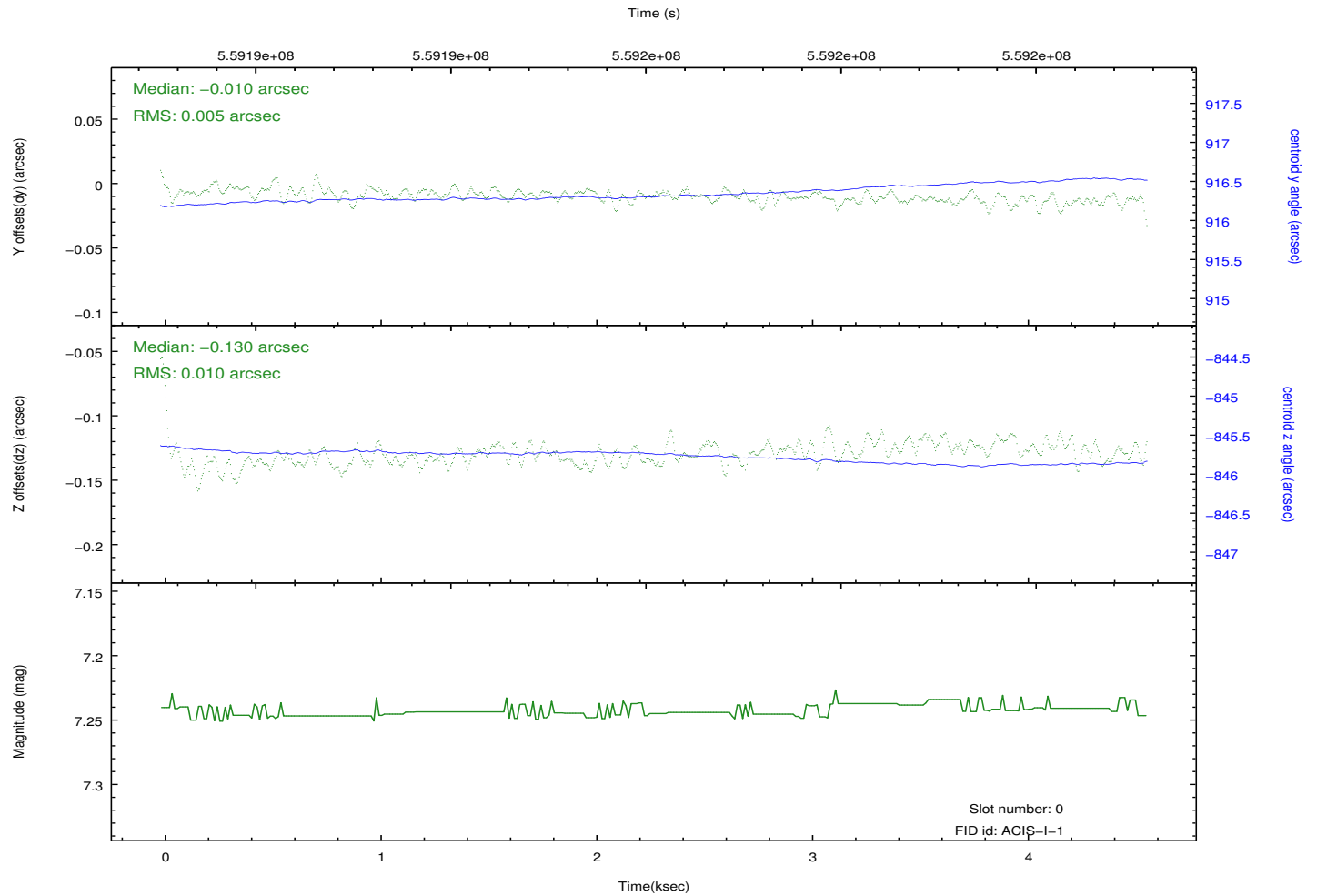
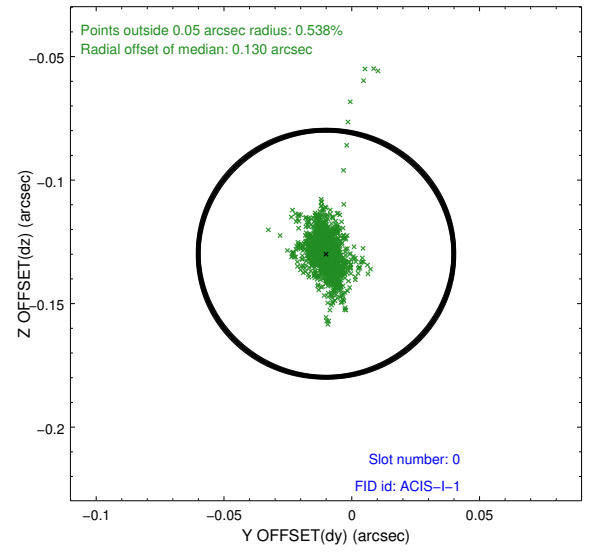
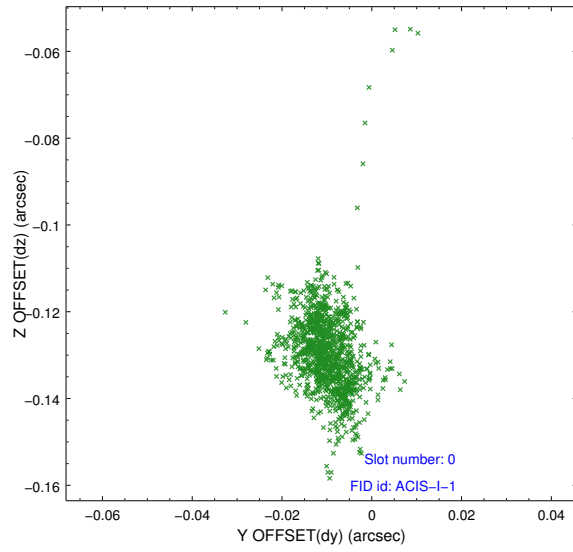


2.4.5 Slot 7

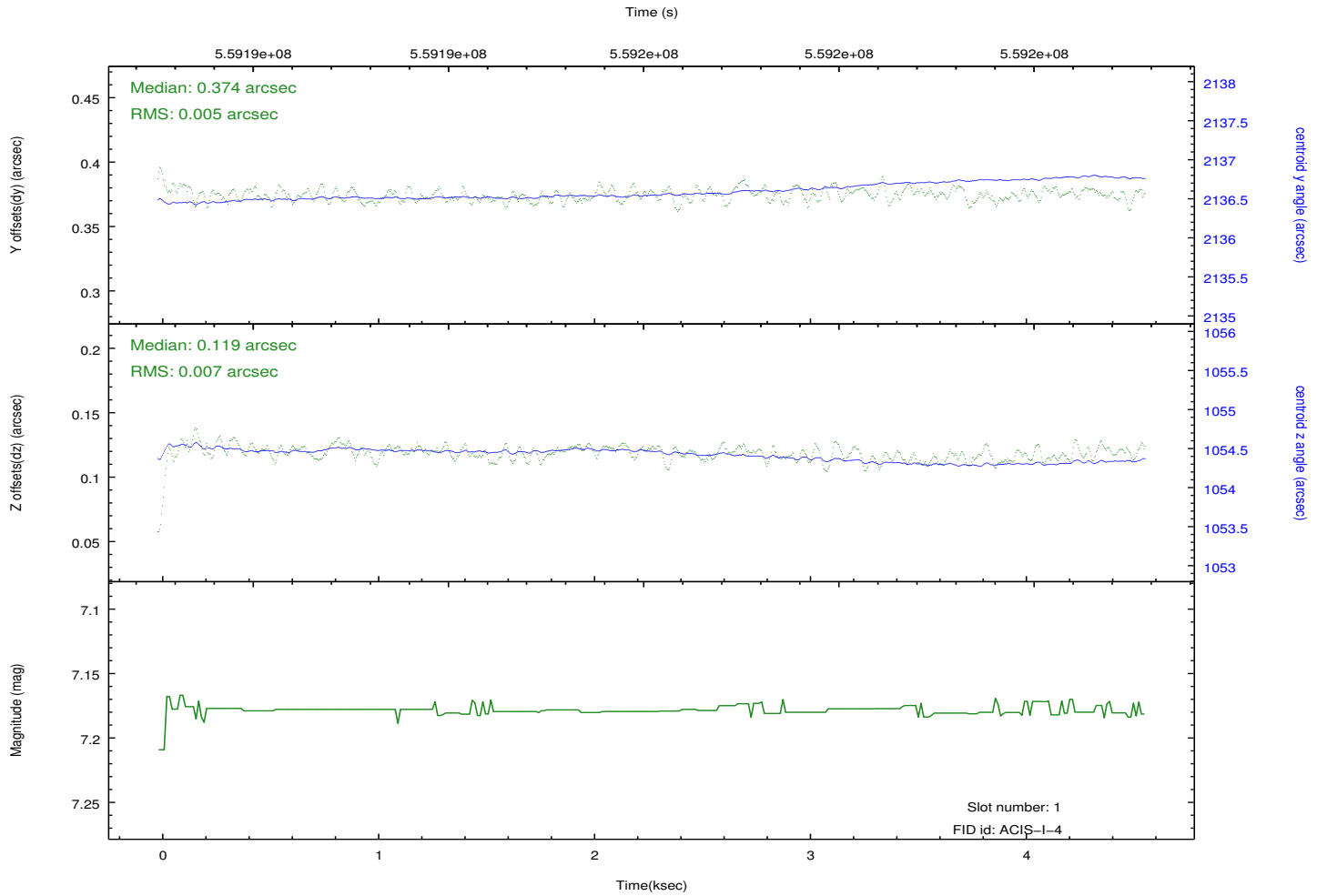
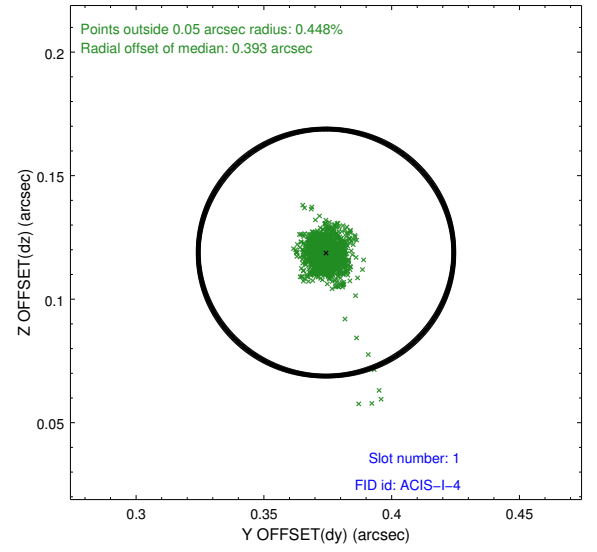
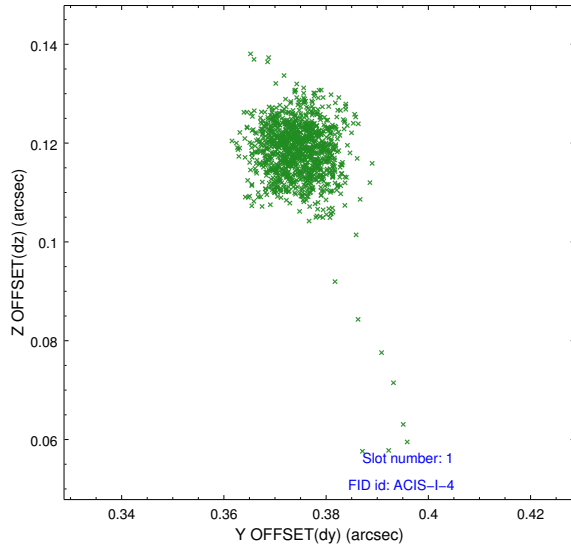


2.5 FID Slots

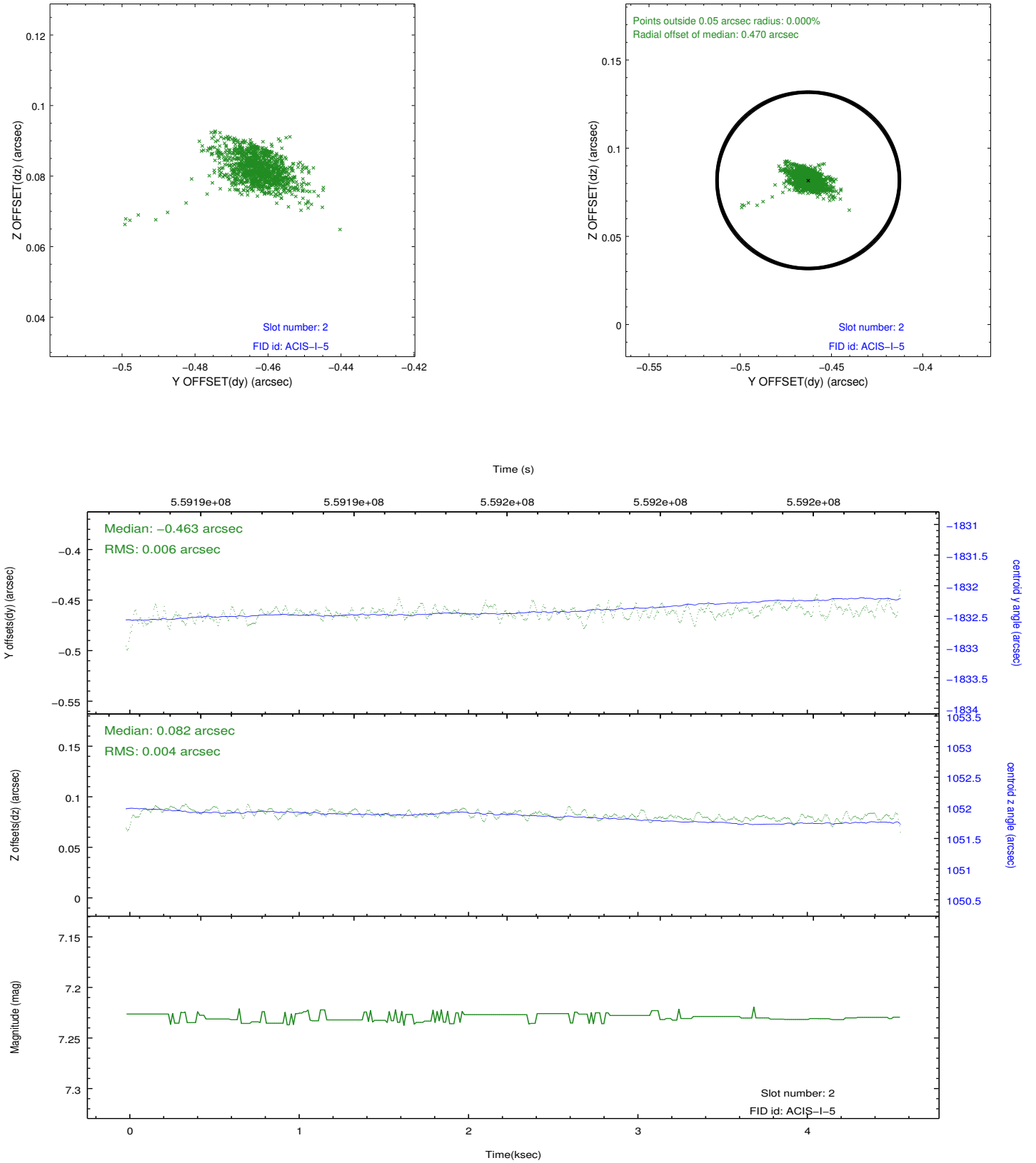
2.5.1 Slot 0



2.5.2 Slot 1



2.5.3 Slot 2



A Summary

A.1 Status

V&V Scientist	Joy Nichols
V&V Date (YYYY-MM-DD)	2015.09.29
V&V Edition	1
V&V Disposition and Status	OK
V&V Charge Time	4.407306355834

A.2 Comments

This observation was interrupted by safing of the satellite. The observation was interrupted at day=2015:264:04:35z. The slot 2 radial offset of 0.470 arcsec is acceptable. The end of the observation also shows no irregularities due to safing. The slot 1 fid appears to be settling or shifting to a new pixel at the beginning of the observation, but this is a small effect and is acceptable.