

V&V Reference Report

L2 ASCDS Version : 10.4

Observation 17073 - L2 Version 1
Chandra X-Ray Center

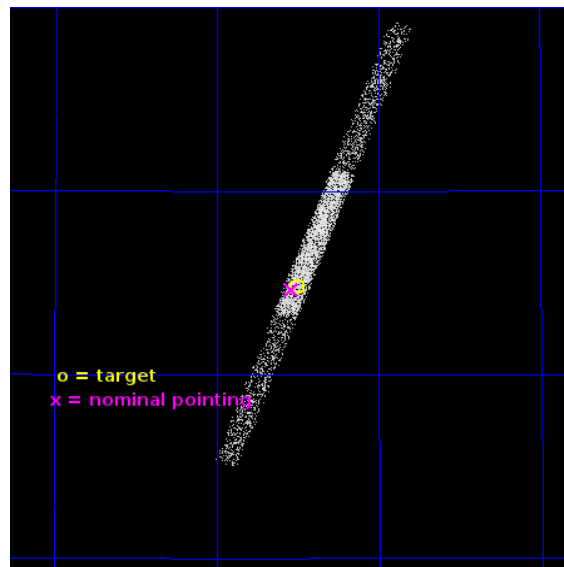
L2 Processing Date : Jun 29 2015

Contents

1	Front	2
2	OBI	3
2.1	OBI	3
2.1.1	Images	3
2.1.2	Bias	3
2.1.3	Parameters	4
2.1.4	Events	4
2.2	Compared Parameters	5
2.3	Aspect	6
2.4	Star Slots	9
2.4.1	Slot 3	9
2.4.2	Slot 4	10
2.4.3	Slot 5	11
2.4.4	Slot 6	12
2.4.5	Slot 7	13
2.5	FID Slots	14
2.5.1	Slot 0	14
2.5.2	Slot 1	15
2.5.3	Slot 2	16
A	Summary	17
A.1	Status	17
A.2	Comments	17

1 Front

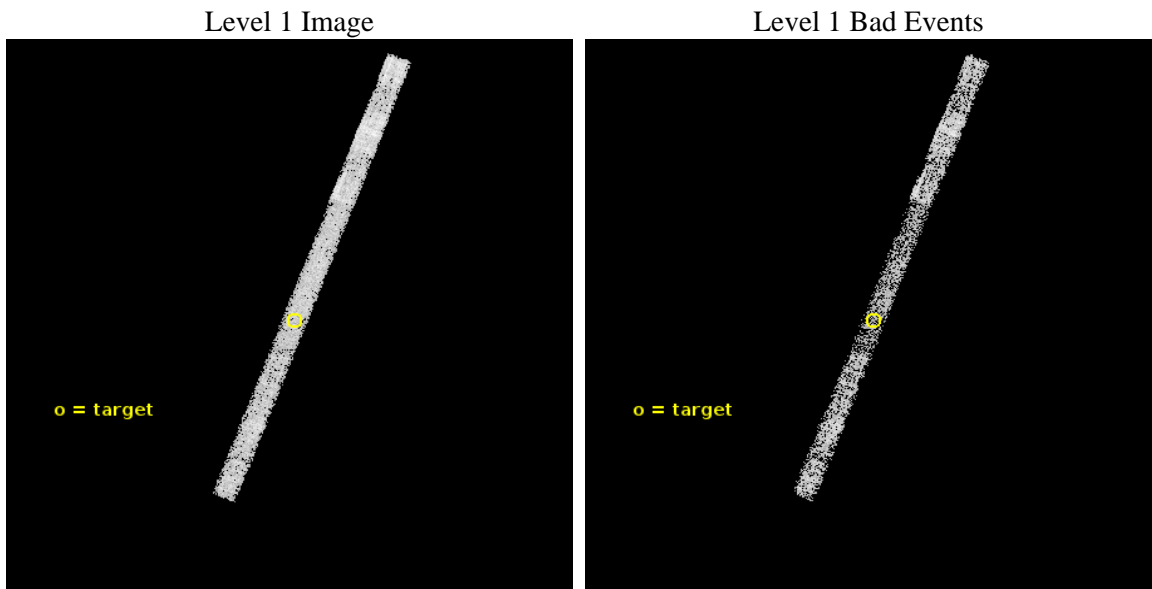
seq_num	703077	Sequence number
obs_id	17073	Observation id
title	MERGER-TRIGGERED NUCLEAR ACTIVITY AT SUB-KILOPARSEC SCALES	Proposa
observer	Dr. Giuseppina Fabbiano	Principal investigator
object	Mrk 22	Source name
dtcycle	0	
cycle	P	events from which exps? Prim/Second/Both
ra_targ	147.376667	Observer's specified target RA [deg]
dec_targ	55.579944	Observer's specified target Dec [deg]
ra_nom	147.38492132324	Nominal RA [deg]
dec_nom	55.577213990957	Nominal Dec [deg]
roll_nom	290.97507188801	Nominal Roll [deg]
revision	1	Processing version of data
ontime	10103.400401592	Sum of GTIs [s]
livetime	9456.5709487011	Livetime [s]
ontime6	10103.400401592	Sum of GTIs [s]
ontime7	10103.400401592	Sum of GTIs [s]
ontime8	10103.400401592	Sum of GTIs [s]
l2events	5671	Number of level 2 events



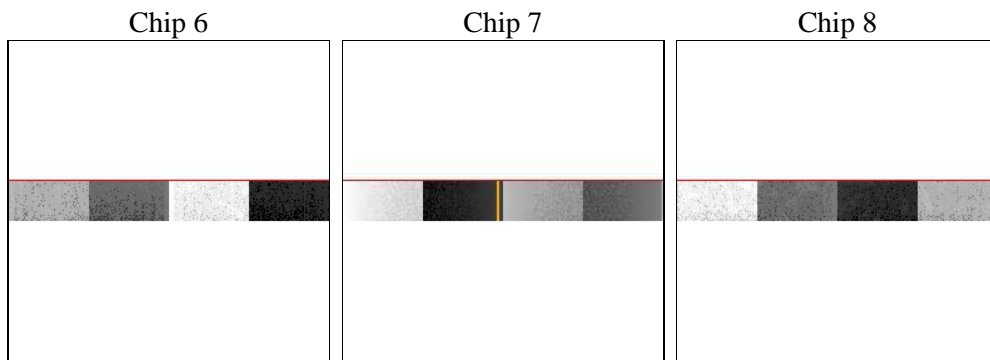
2 OBI

2.1 OBI

2.1.1 Images



2.1.2 Bias



2.1.3 Parameters

obi_num	3	Obi number	sched_exp_time	10000.000000	[s] Scheduled observation exposure time
ascdsver	10.4	Processing system revision	ontime	10103.400401592	Sum of GTIs [s]
caldsver	4.6.7	 	ontime6	10103.400401592	Sum of GTIs [s]
date	2015-06-29T14:59:33	Date and time of file creation	ontime7	10103.400401592	Sum of GTIs [s]
revision	1	Processing version of data	ontime8	10103.400401592	Sum of GTIs [s]
			l1events	30546	Number of level 1 events

2.1.4 Events

	ccd 6	ccd 7	ccd 8
level 1 events	8295	8896	13355
rejected events	7252	4777	9185
rejected %	87%	53%	68%

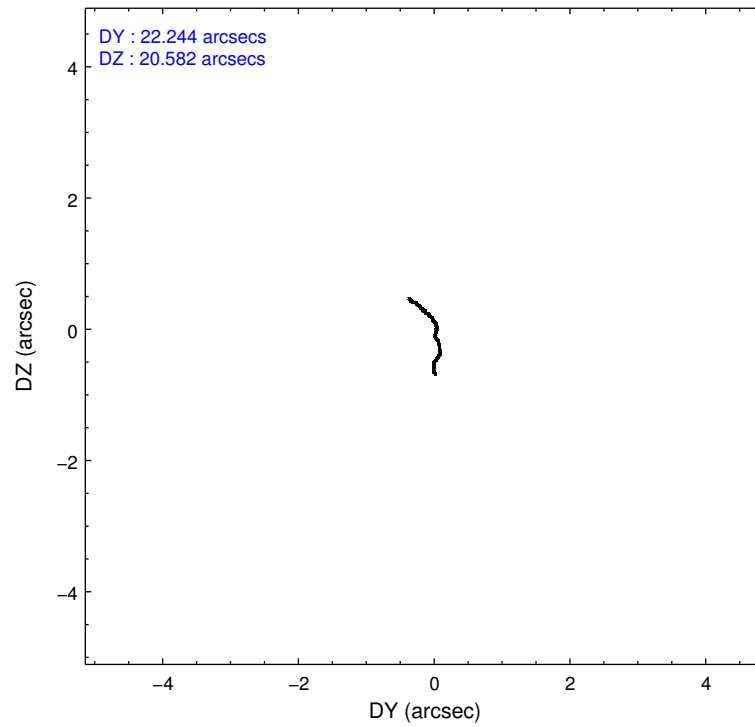
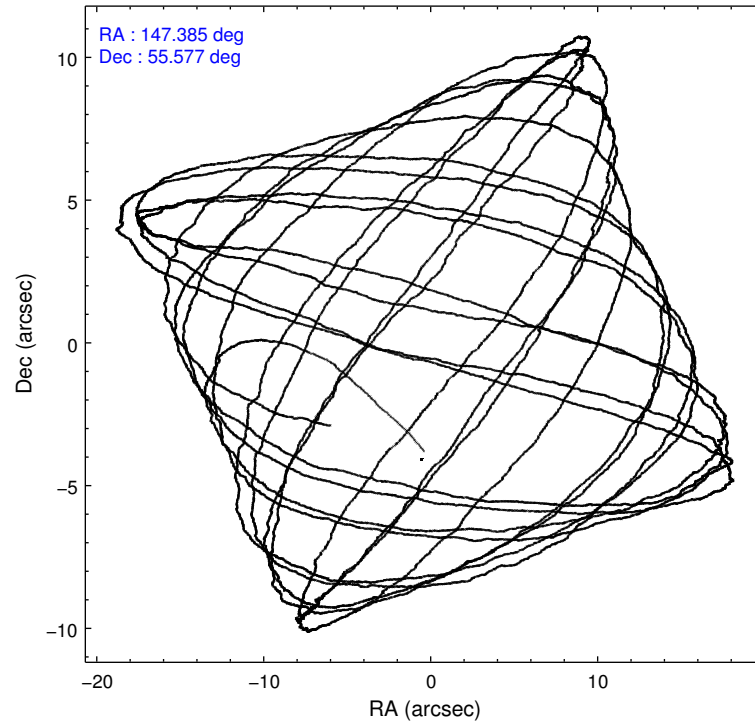
	ccd 6	ccd 7	ccd 8
grade 0 events	329	416	1126
	3%	4%	8%
grade 1 events	4	19	2
	0%	0%	0%
grade 2 events	188	815	803
	2%	9%	6%
grade 3 events	177	474	514
	2%	5%	3%
grade 4 events	166	468	517
	2%	5%	3%
grade 5 events	342	919	501
	4%	10%	3%
grade 6 events	183	1947	1211
	2%	21%	9%
grade 7 events	6906	3838	8681
	83%	43%	65%

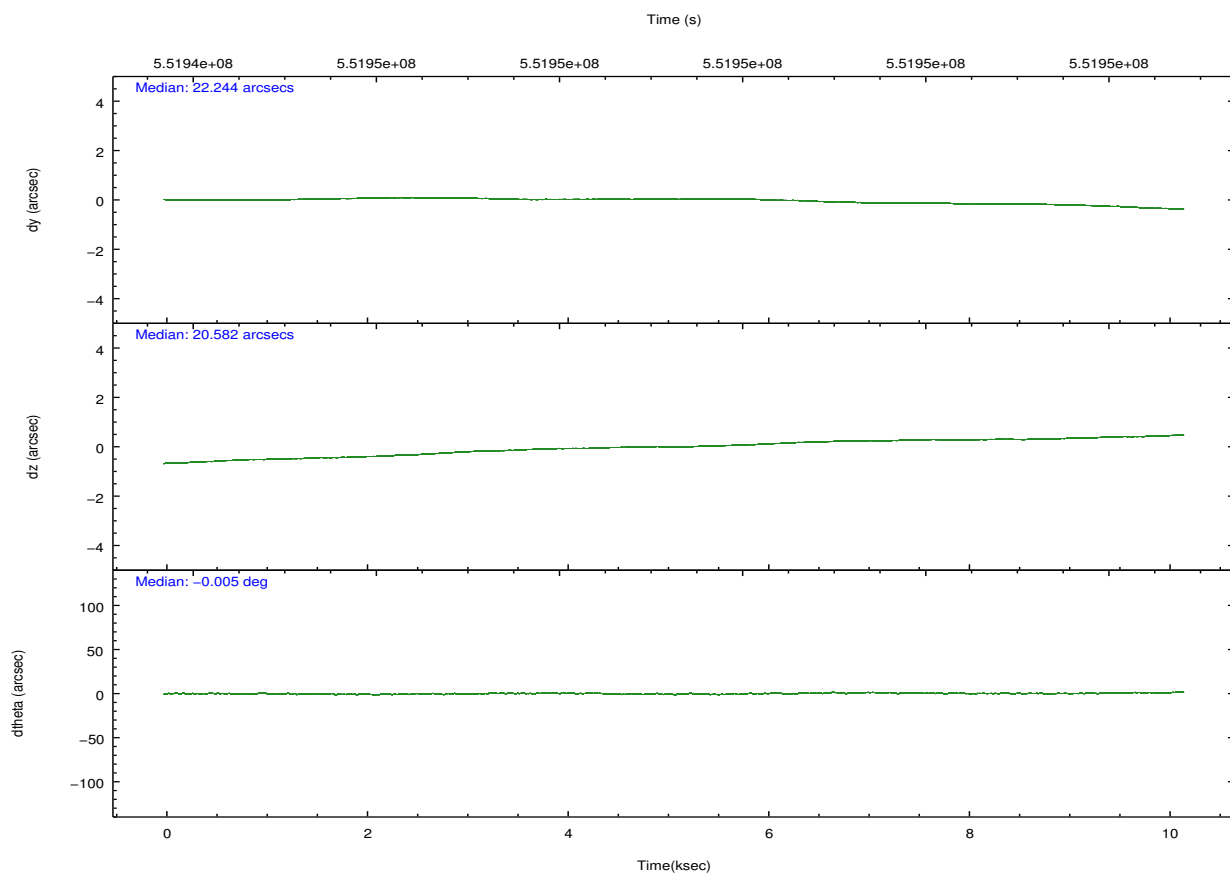
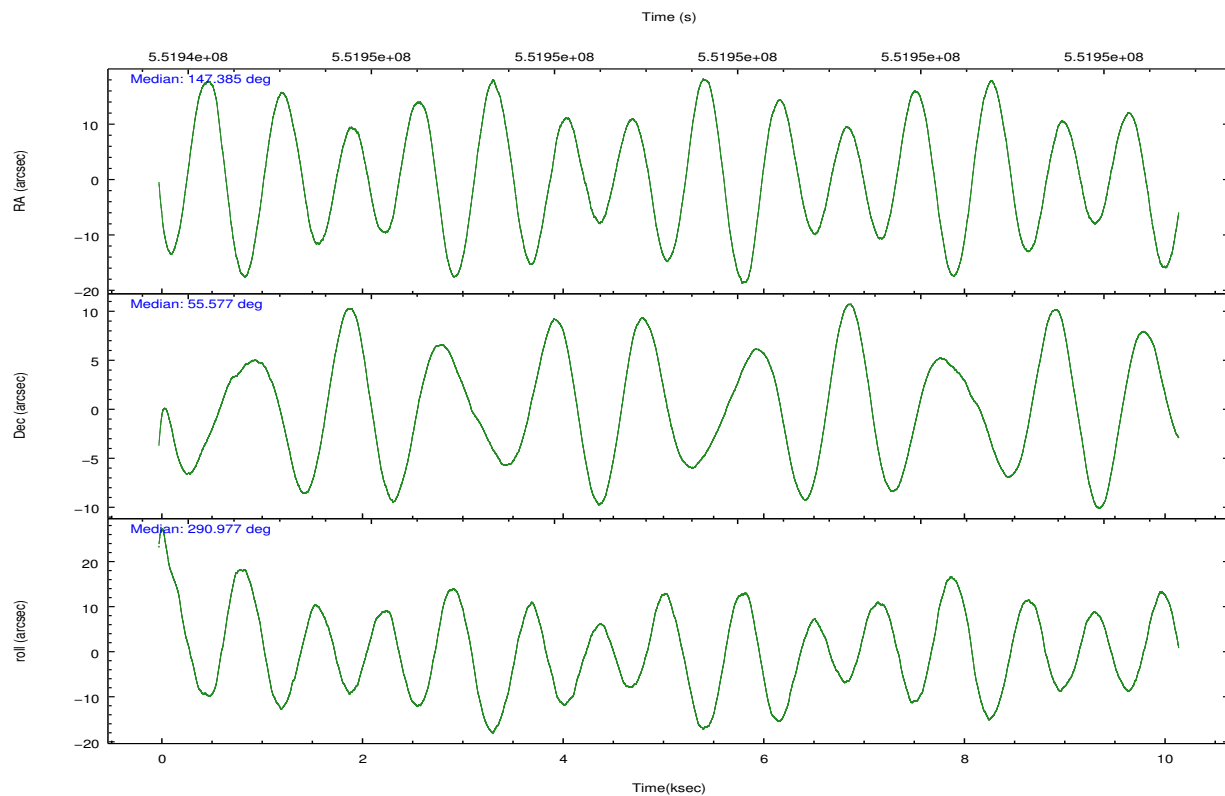
2.2 Compared Parameters

Parameter	Planned	Actual
Instrument	ACIS	ACIS
Detector	ACIS-678	ACIS-678
Grating	NONE	NONE
Data mode	FAINT	FAINT
Observation mode	POINTING	POINTING
[deg] Pointing RA	147.346860	147.3849213232355
[deg] Pointing Dec	55.594211	55.57721399095671
[deg] Pointing Roll	290.849823	290.9750718880063
[mm] SIM focus pos	-0.684267	-0.6828225247311905
[mm] SIM defocus	0	0.001444936568705701
[mm] SIM translation stage pos	-190.132523	-190.1400660498719
[mm] SIM translation stage offset	0	0.00754346686406393
[s] Observation start time (MET)	551944328.184000	551943337.06905
Observation start date	2015-06-29T05:51:01	2015-06-29T05:35:37
[s] Observation end time (MET)	551954328.184000	551955192.7322201
Observation end date	2015-06-29T08:37:41	2015-06-29T08:53:12
Read mode	TIMED	TIMED

Parameter	Planned	Actual
Obspar format version number	7	7
Obspar file type	PREDICTED	ACTUAL
Obspar update status	NONE	UPDATED
CCD I0 on	N	N
CCD I1 on	N	N
CCD I2 on	N	N
CCD I3 on	N	N
CCD S0 on	N	N
CCD S1 on	N	N
CCD S2 on	O2	Y
CCD S3 on	Y	Y
CCD S4 on	O1	Y
CCD S5 on	N	N
Number of optional ACIS chips dropped	0	0
On-chip summing requested	N	N
Subarray requested	CUSTOM	1/8
Subarray start row	449	449
Subarray row count	128	128
Alternating exposures requested	N	N
[s] Primary exposure time	0.000000	0.6

2.3 Aspect



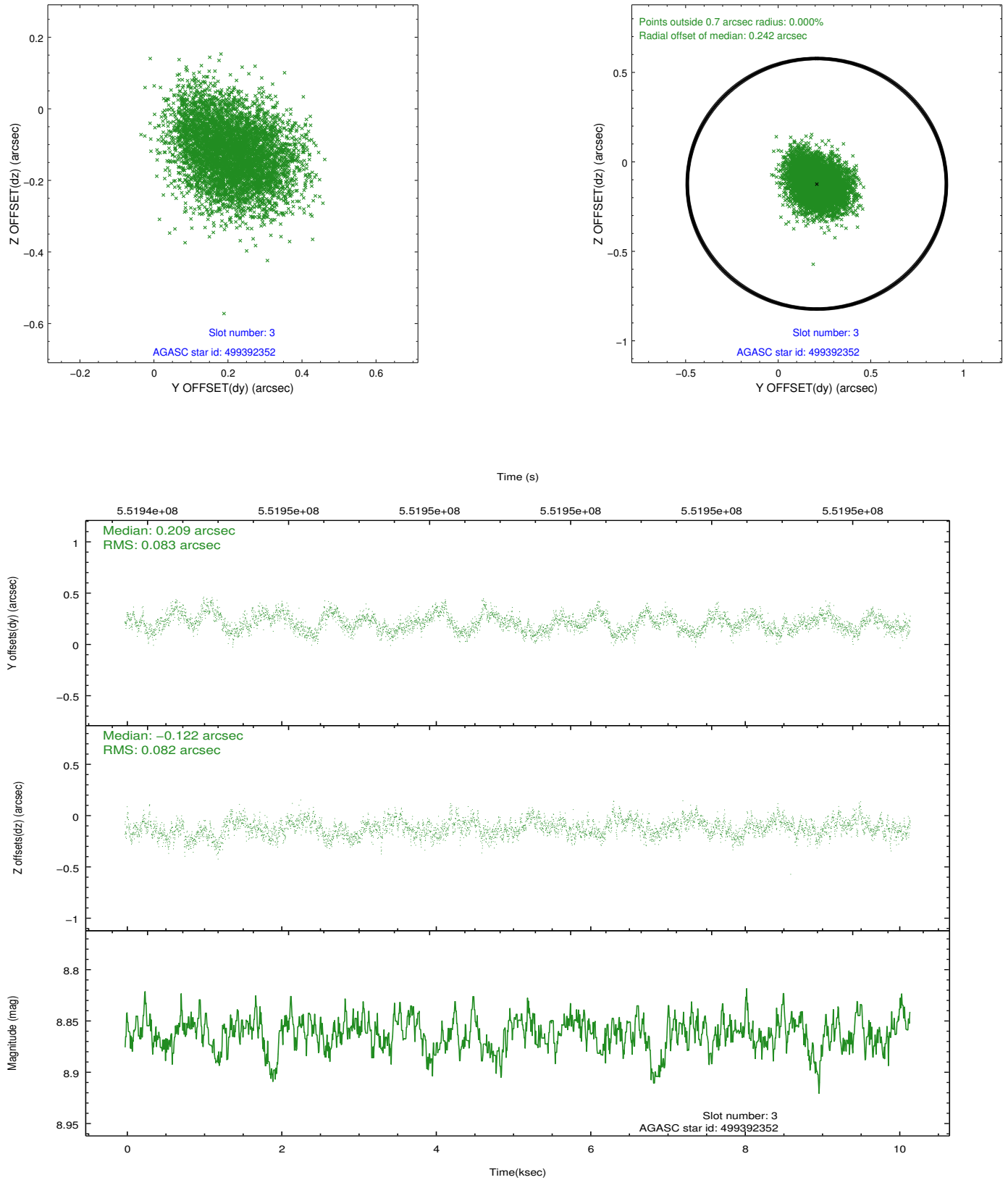


Slot Statistics

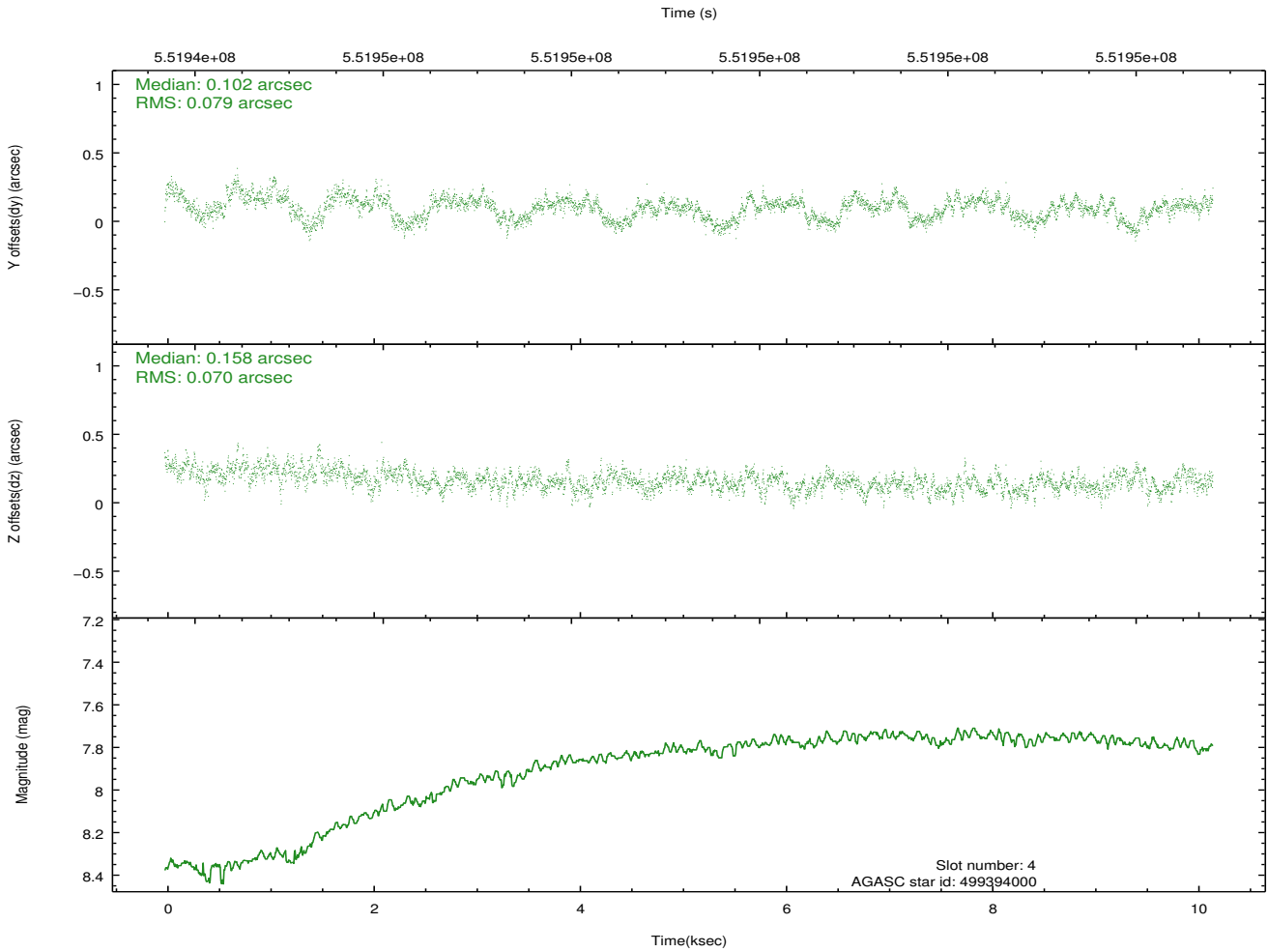
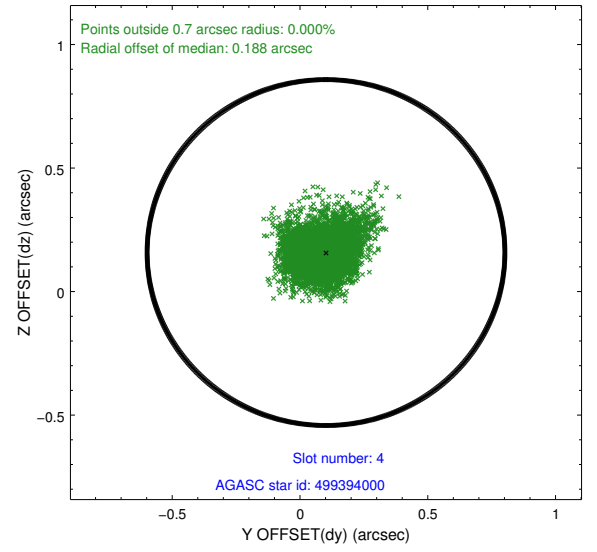
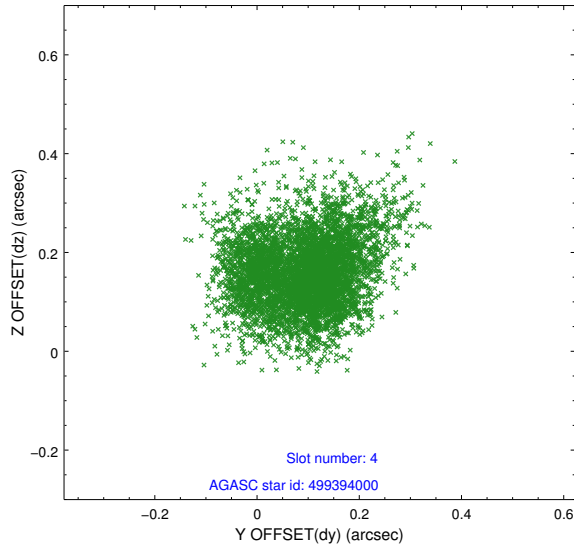
slot	status	used	id	mag	n_pts	med_dy	med_dz	dr1	dr2	ra	dec	mean_y	mean_z
0	FID		ACIS-S-2	7.07	2480	-0.145	-0.085	0.009	0.014	0.000000	0.000000	-775.48	-1742.18
1	FID		ACIS-S-4	7.18	2480	0.366	0.093	0.013	0.023	0.000000	0.000000	2138.04	165.98
2	FID		ACIS-S-5	7.19	2480	-0.251	0.001	0.010	0.017	0.000000	0.000000	-1827.79	160.09
3	GUIDE	used	499392352	8.86	4955	0.209	-0.122	0.125	0.198	146.511082	55.750002	-1135.35	-1379.30
4	GUIDE	used	499394000	7.82	4960	0.102	0.158	0.112	0.182	145.939455	55.952515	-2241.10	-2181.33
5	GUIDE	used	500313056	7.92	4960	-0.177	-0.022	0.133	0.199	147.228953	55.127825	1482.40	-824.61
6	GUIDE	used	500314232	9.36	4957	-0.183	-0.034	0.232	0.352	147.513780	55.089903	1819.90	-324.67
7	GUIDE	used	500314984	9.65	4950	0.050	0.001	0.151	0.250	147.165650	55.801770	-828.23	-76.36

2.4 Star Slots

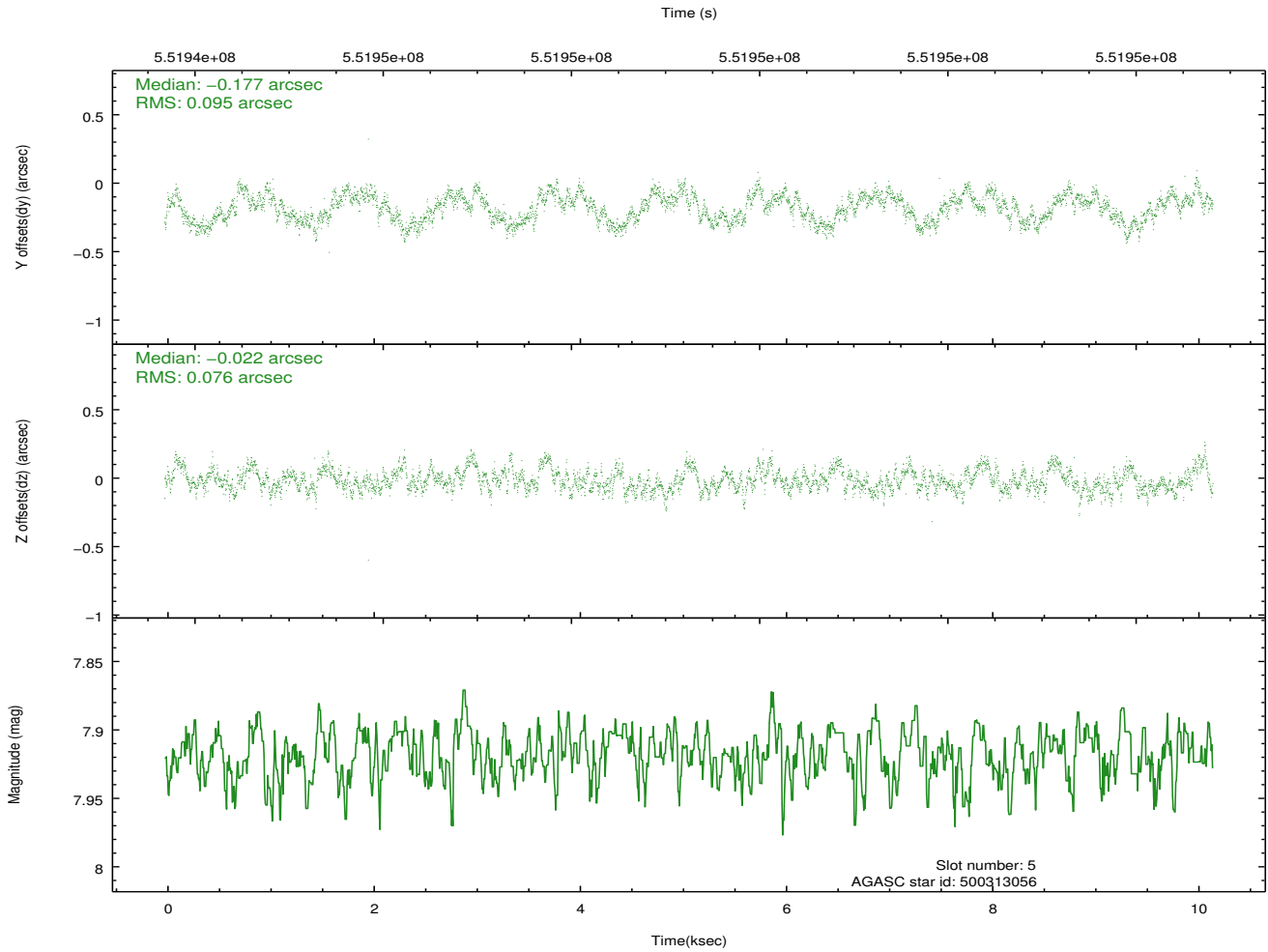
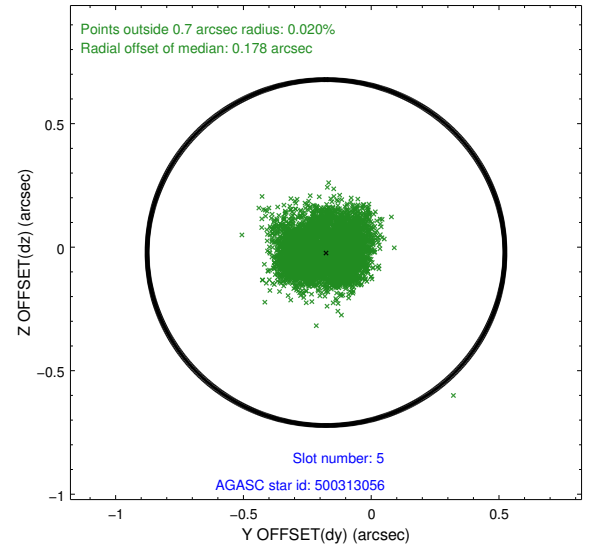
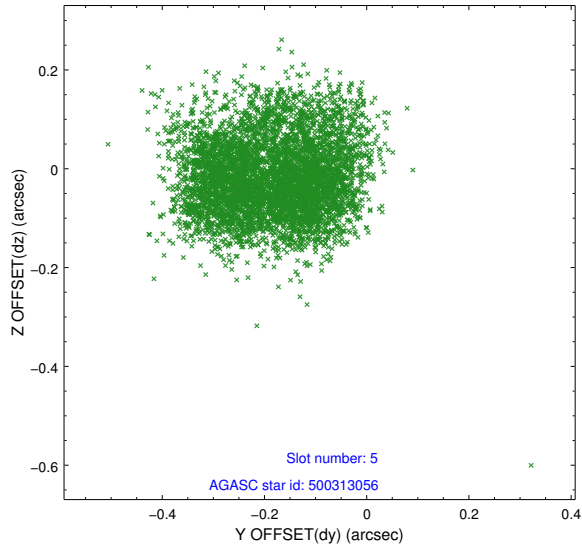
2.4.1 Slot 3



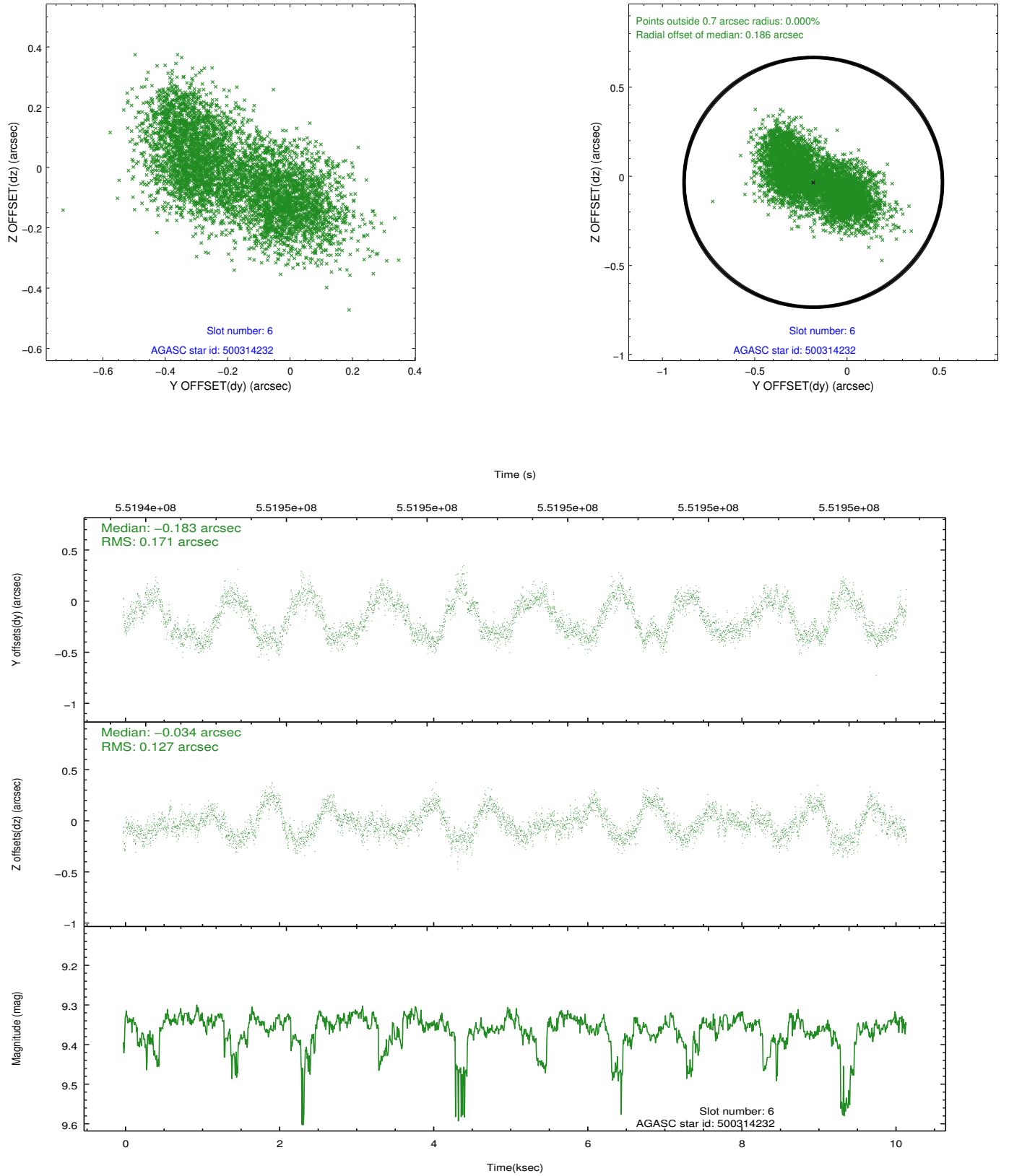
2.4.2 Slot 4



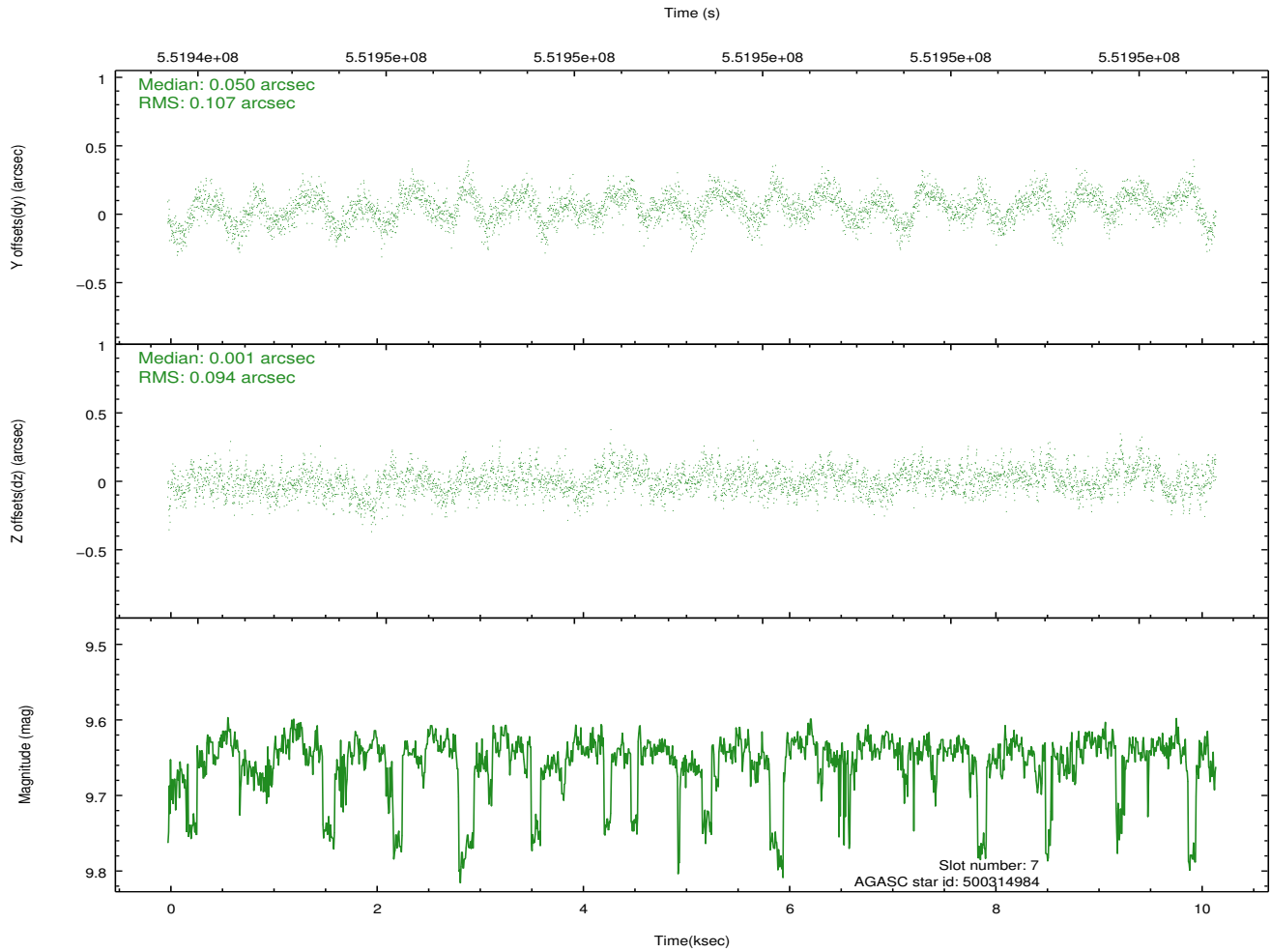
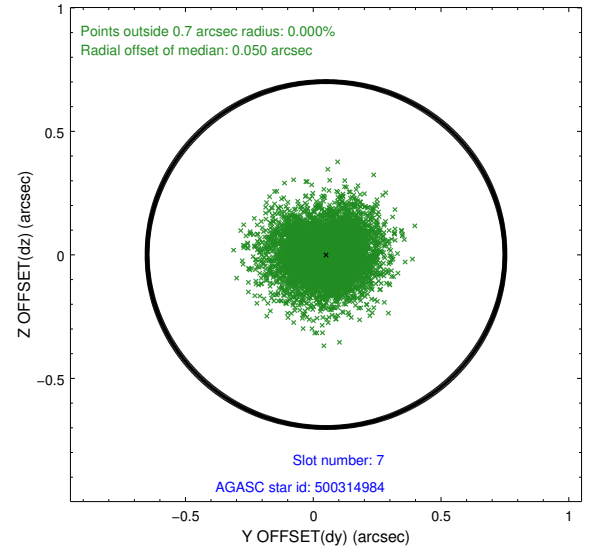
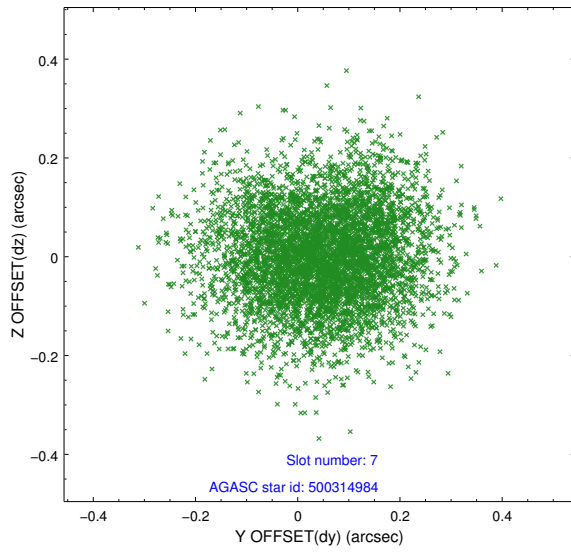
2.4.3 Slot 5



2.4.4 Slot 6

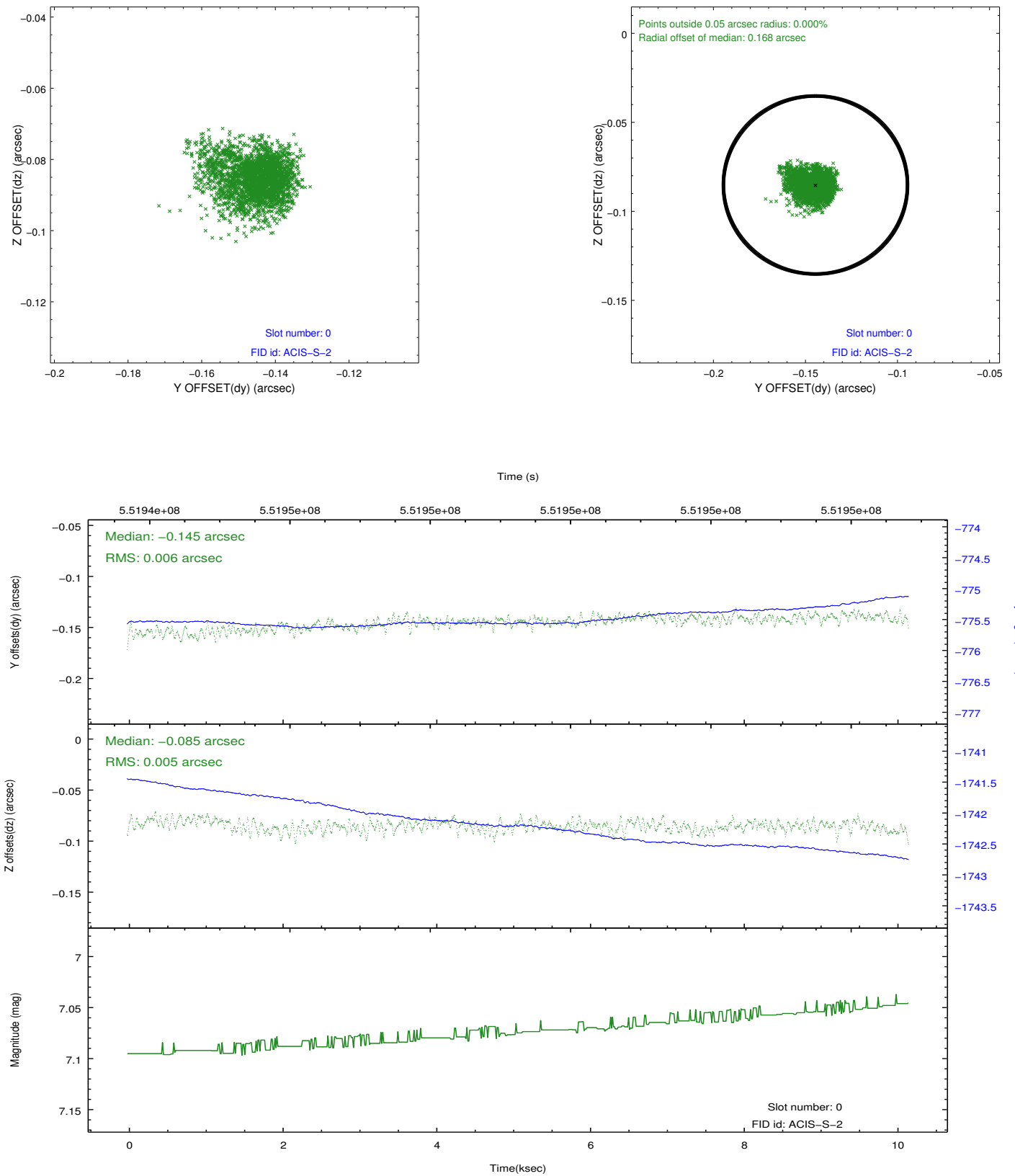


2.4.5 Slot 7

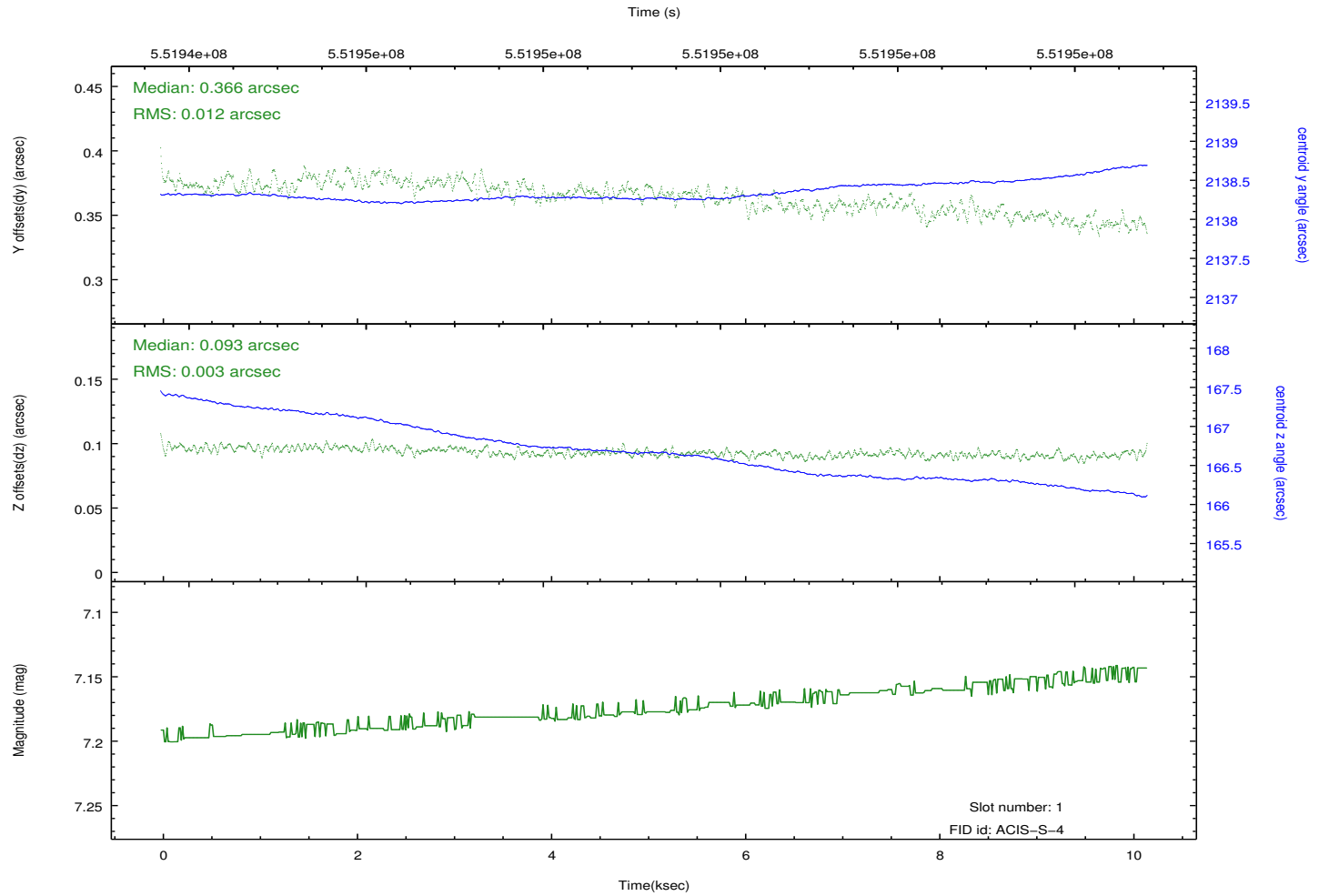
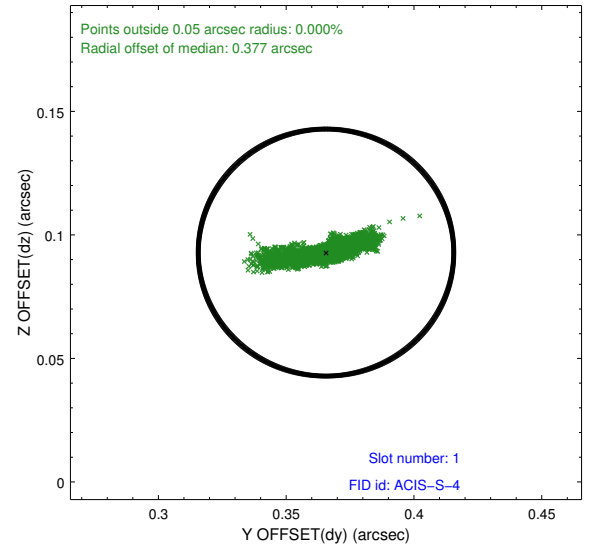
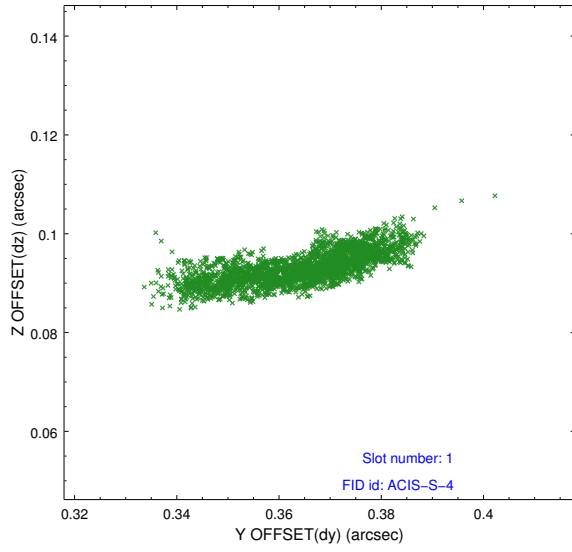


2.5 FID Slots

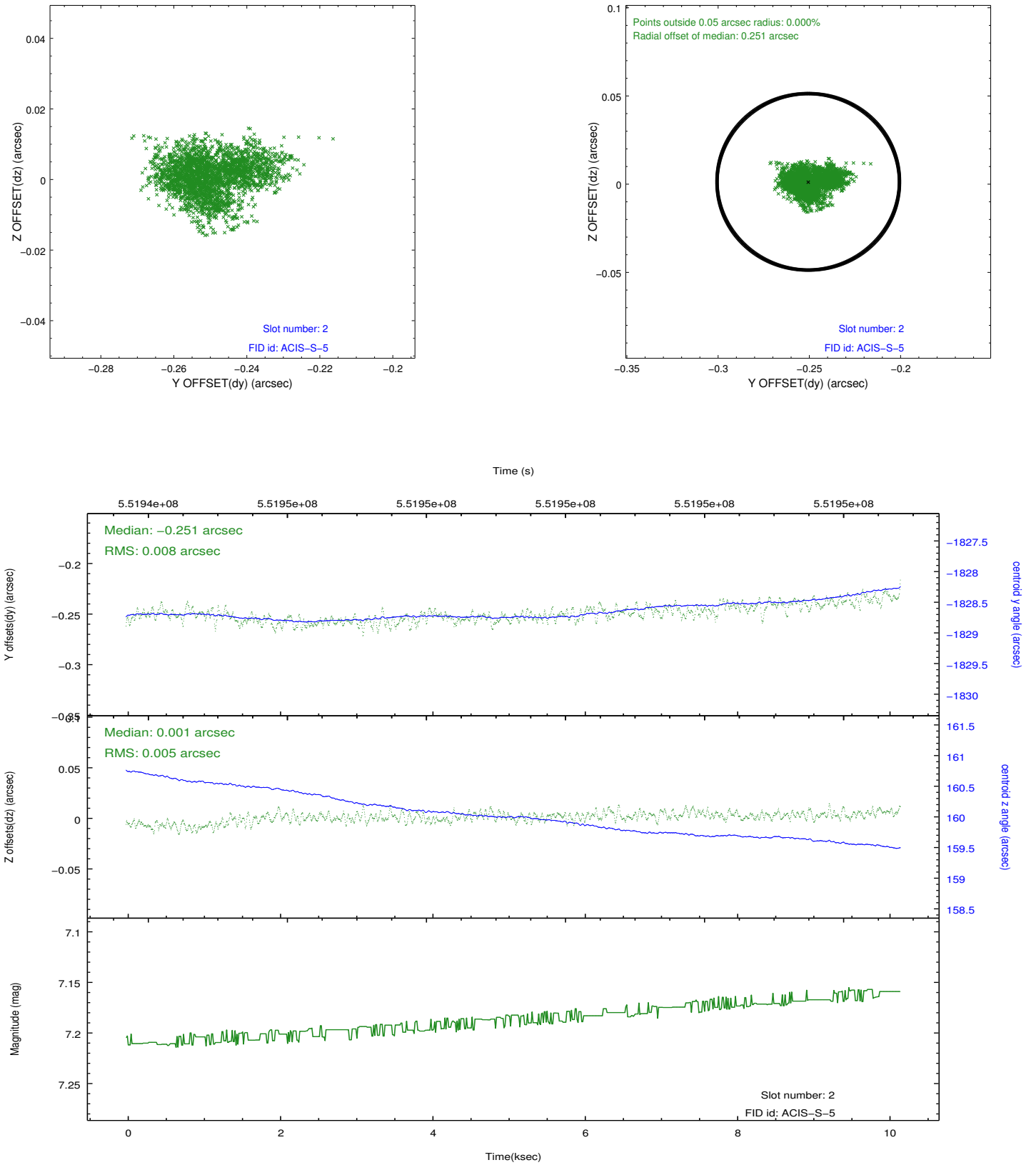
2.5.1 Slot 0



2.5.2 Slot 1



2.5.3 Slot 2



A Summary

A.1 Status

V&V Scientist	Beth Sundheim
V&V Date (YYYY-MM-DD)	2015.06.29
V&V Edition	1
V&V Disposition and Status	OK
V&V Charge Time	10.103400401592

A.2 Comments