

# V&V Reference Report

## L2 ASCDS Version : 10.4.2.1

Observation 16827 - L2 Version 1  
Chandra X-Ray Center

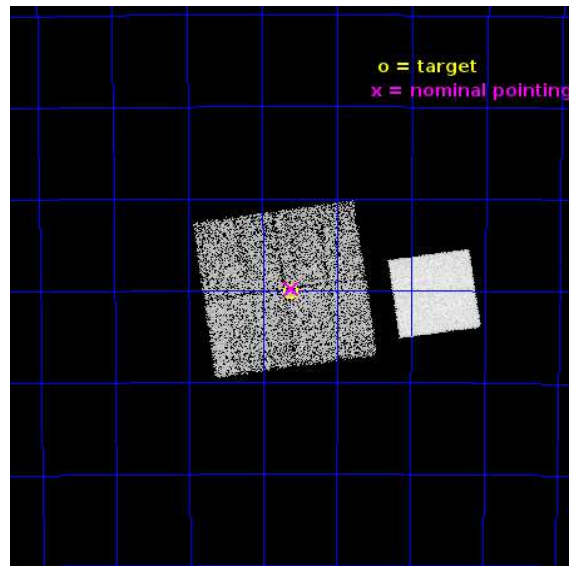
L2 Processing Date : Dec 4 2015

## Contents

<b>1</b>	<b>Front</b>	<b>2</b>
<b>2</b>	<b>OBI</b>	<b>3</b>
2.1	OBI . . . . .	3
2.1.1	Images . . . . .	3
2.1.2	Bias . . . . .	3
2.1.3	Parameters . . . . .	4
2.1.4	Events . . . . .	4
2.2	Compared Parameters . . . . .	5
2.3	Aspect . . . . .	6
2.4	Star Slots . . . . .	9
2.4.1	Slot 3 . . . . .	9
2.4.2	Slot 4 . . . . .	10
2.4.3	Slot 5 . . . . .	11
2.4.4	Slot 6 . . . . .	12
2.4.5	Slot 7 . . . . .	13
2.5	FID Slots . . . . .	14
2.5.1	Slot 0 . . . . .	14
2.5.2	Slot 1 . . . . .	15
2.5.3	Slot 2 . . . . .	16
<b>A</b>	<b>Summary</b>	<b>17</b>
A.1	Status . . . . .	17
A.2	Comments . . . . .	17

# 1 Front

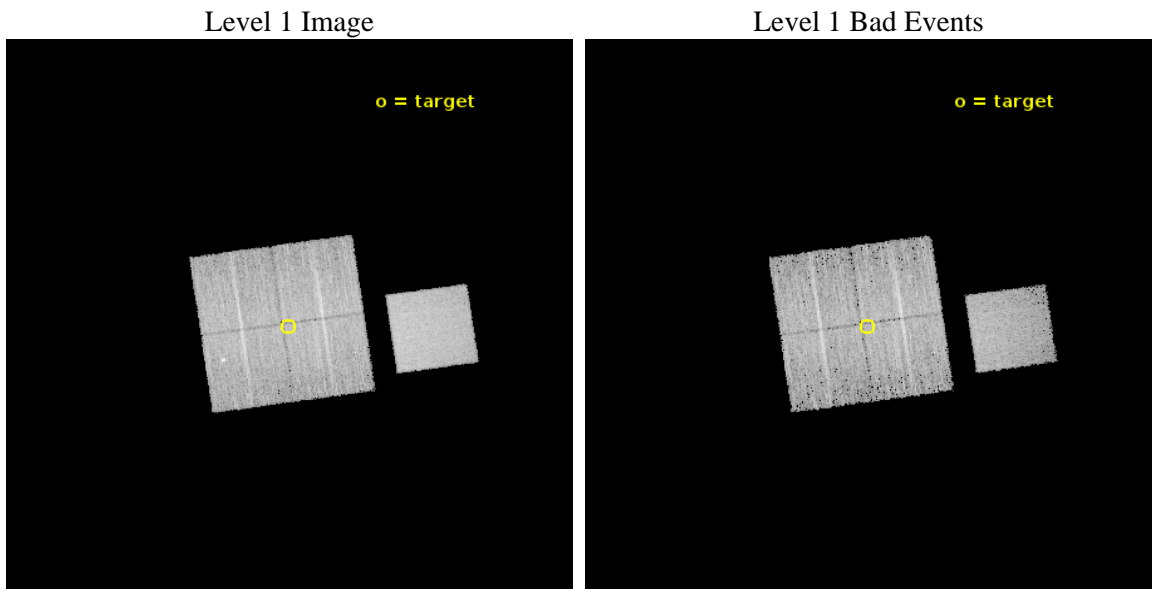
seq_num	502345	Sequence number
obs_id	16827	Observation id
title	Snap-shot survey of unidentified Fermi sources	Proposal title
observer	Dr. Blagoy Rangelov	Principal investigator
object	2FGL J1056.0-5853	Source name
dtcycle	0	&#160
cycle	P	events from which exps? Prim/Second/Both
ra_targ	164.156275	Observer's specified target RA [deg]
dec_targ	-58.836781	Observer's specified target Dec [deg]
ra_nom	164.15321784826	Nominal RA [deg]
dec_nom	-58.830576231004	Nominal Dec [deg]
roll_nom	81.795962746887	Nominal Roll [deg]
revision	1	Processing version of data
ontime	10133.900078058	Sum of GTIs [s]
livetime	10001.49321307	Livetime [s]
ontime0	10130.7590276	Sum of GTIs [s]
ontime1	10130.75905776	Sum of GTIs [s]
ontime2	10133.900078058	Sum of GTIs [s]
ontime3	10133.900078058	Sum of GTIs [s]
ontime7	10133.900078058	Sum of GTIs [s]
l2events	54319	Number of level 2 events



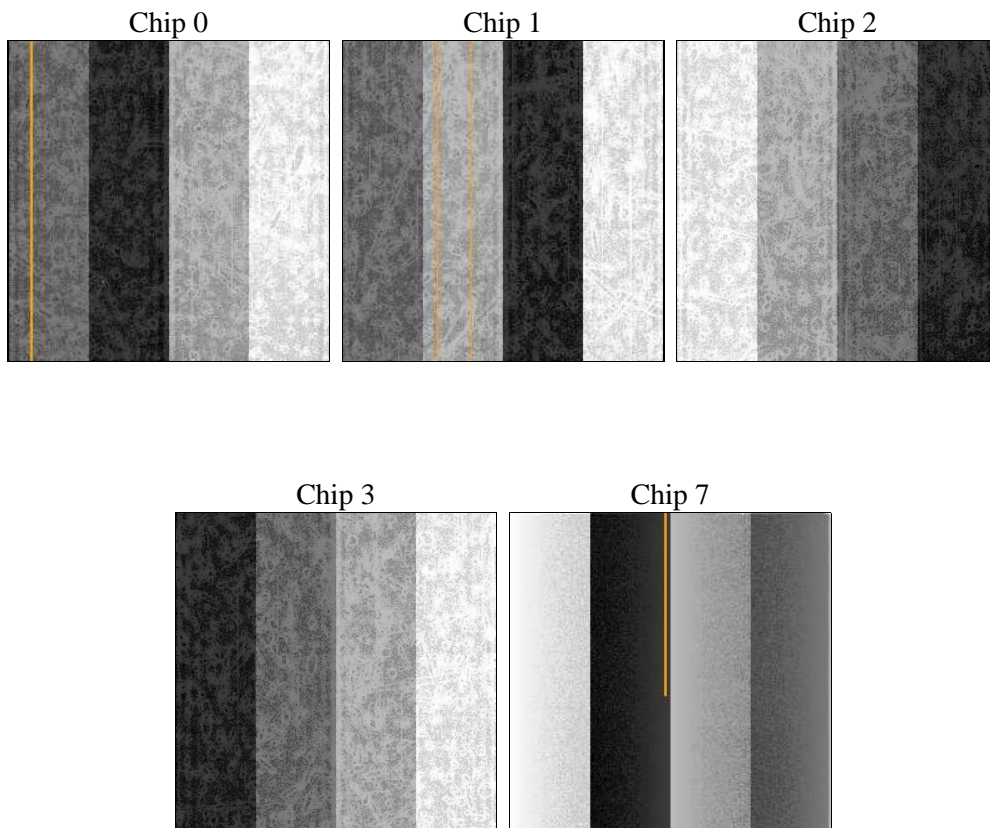
## 2 OBI

### 2.1 OBI

#### 2.1.1 Images



#### 2.1.2 Bias



### 2.1.3 Parameters

obi_num	2	Obi number	sched_exp_time	10073.000000	[s] Scheduled observation exposure time
ascdsver	10.4.2.1	Processing system revision	ontime	10133.900078058	Sum of GTIs [s]
caldbver	4.6.10a	&#160	ontime0	10130.7590276	Sum of GTIs [s]
date	2015-12-04T19:33:29	Date and time of file creation	ontime1	10130.75905776	Sum of GTIs [s]
revision	1	Processing version of data	ontime2	10133.900078058	Sum of GTIs [s]
			ontime3	10133.900078058	Sum of GTIs [s]
			ontime7	10133.900078058	Sum of GTIs [s]
			l1events	306937	Number of level 1 events

### 2.1.4 Events

	ccd 0	ccd 1	ccd 2	ccd 3	ccd 7
level 1 events	56010	54855	60679	57853	77540
rejected events	49518	46803	54345	51453	44902
rejected %	88%	85%	89%	88%	57%

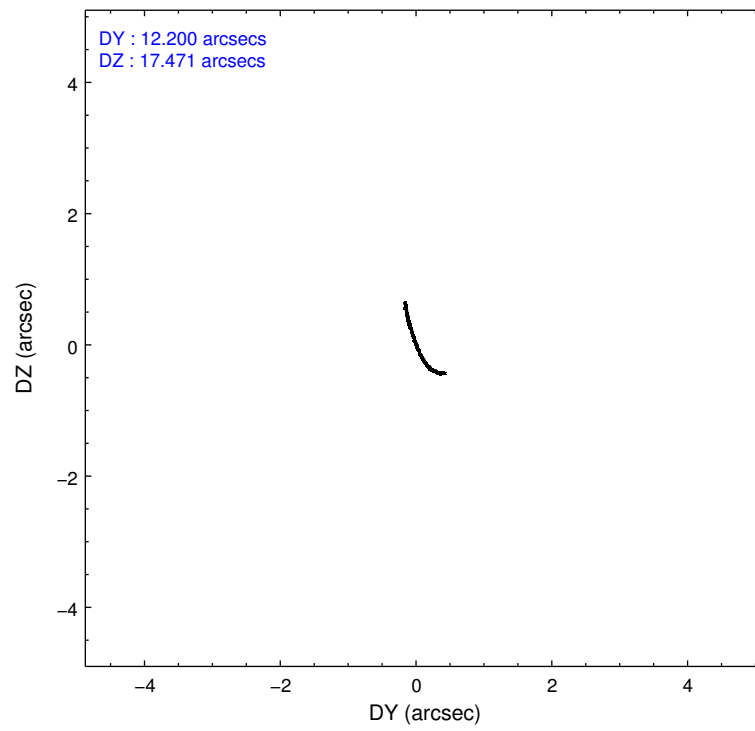
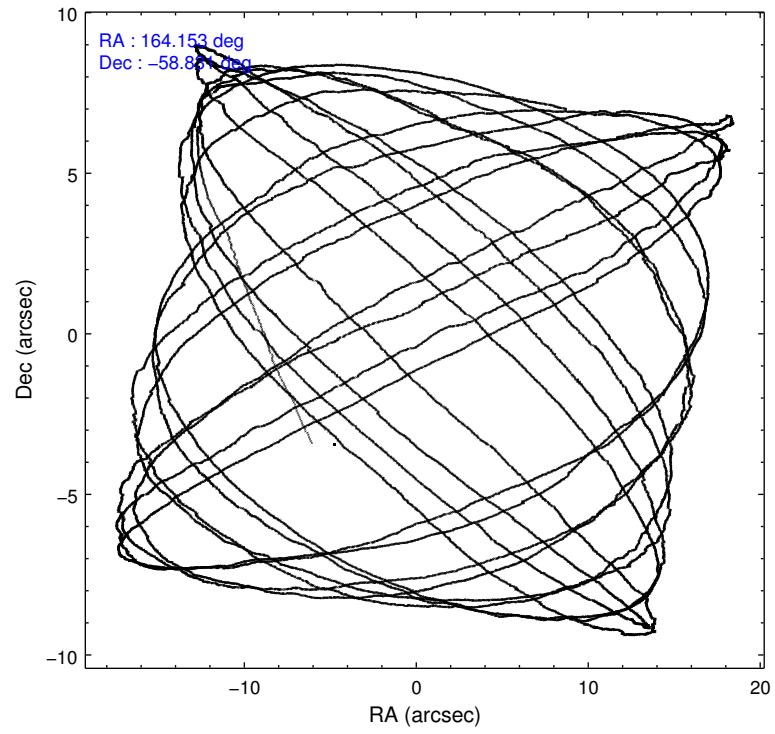
	ccd 0	ccd 1	ccd 2	ccd 3	ccd 7
grade 0 events	2270	3078	2347	2296	2570
	4%	5%	3%	3%	3%
grade 1 events	17	31	30	45	85
	0%	0%	0%	0%	0%
grade 2 events	1577	1844	1474	1347	6911
	2%	3%	2%	2%	8%
grade 3 events	633	725	648	702	2395
	1%	1%	1%	1%	3%
grade 4 events	682	655	674	703	2425
	1%	1%	1%	1%	3%
grade 5 events	2442	2593	2329	2821	7461
	4%	4%	3%	4%	9%
grade 6 events	1330	1752	1193	1354	18351
	2%	3%	1%	2%	23%
grade 7 events	47059	44177	51984	48585	37342
	84%	80%	85%	83%	48%

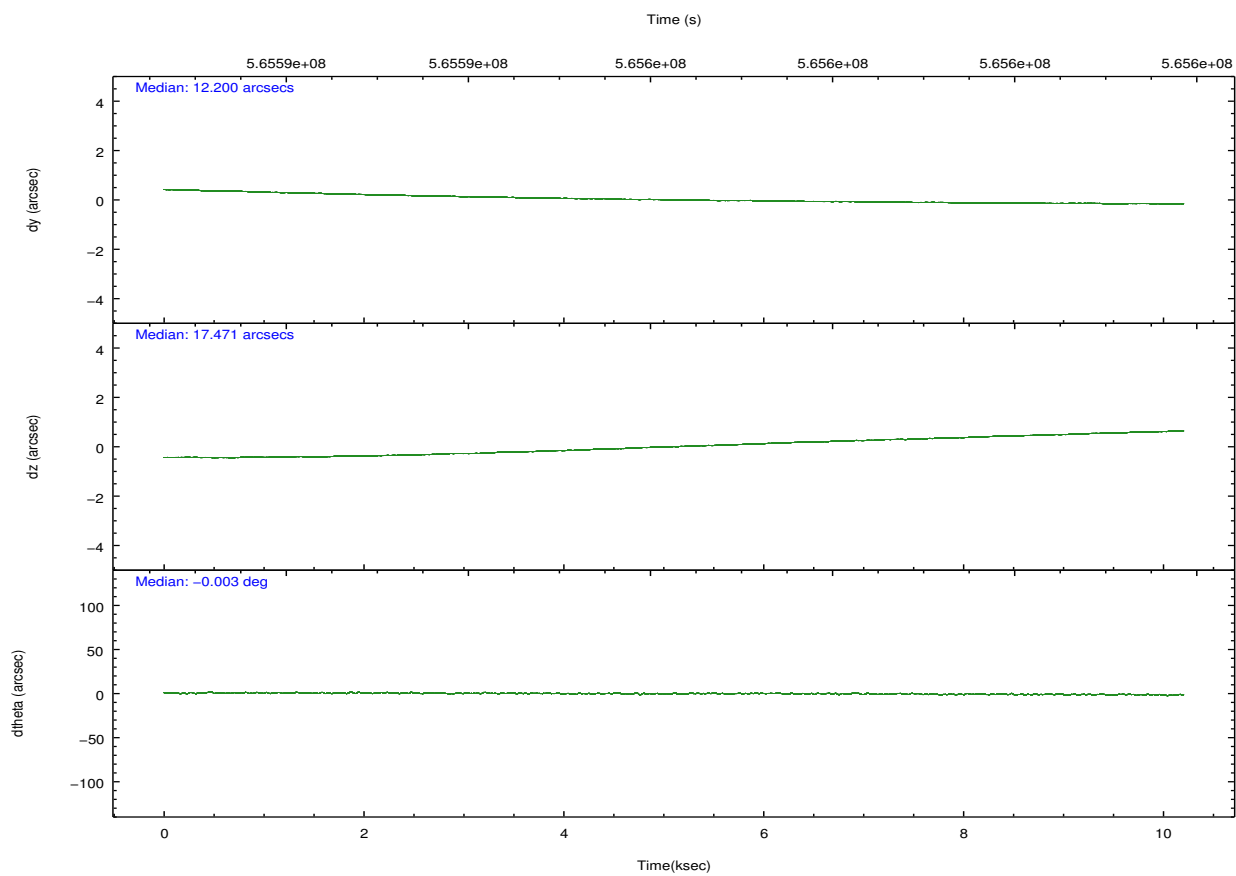
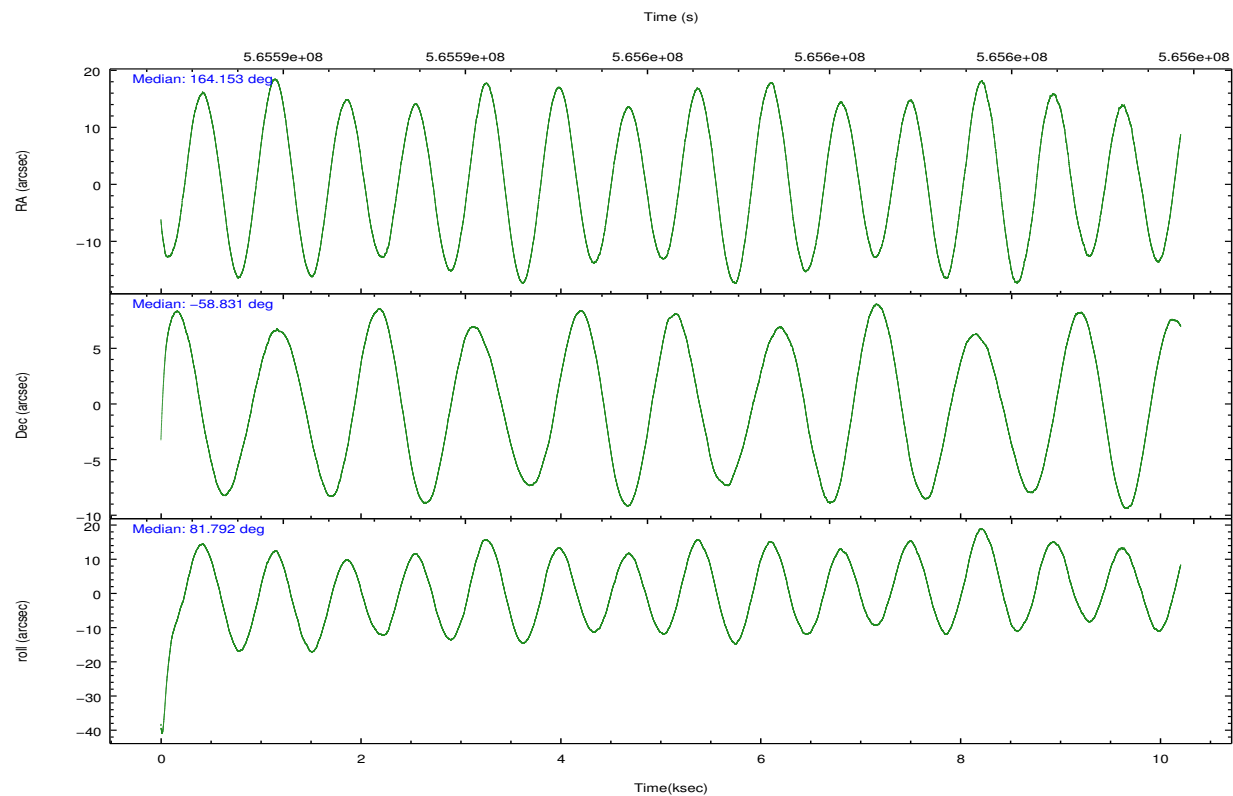


## 2.2 Compared Parameters

Parameter	Planned	Actual	Parameter	Planned	Actual
Instrument	ACIS	ACIS	Obspar format version number	7	7
Detector	ACIS-01237	ACIS-01237	Obspar file type	PREDICTED	ACTUAL
Grating	NONE	NONE	Obspar update status	NONE	UPDATED
Data mode	VFAINT	VFAINT	CCD I0 on	Y	Y
Observation mode	POINTING	POINTING	CCD I1 on	Y	Y
[deg] Pointing RA	164.173274	164.1532178482595	CCD I2 on	Y	Y
[deg] Pointing Dec	-58.856203	-58.83057623100376	CCD I3 on	Y	Y
[deg] Pointing Roll	81.604482	81.79596274688674	CCD S0 on	N	N
[mm] SIM focus pos	-0.782348	-0.7809083437167272	CCD S1 on	N	N
[mm] SIM defocus	0	0.001439871863259334	CCD S2 on	N	N
[mm] SIM translation stage pos	-233.592463	-233.5874344608287	CCD S3 on	O1	Y
[mm] SIM translation stage offset	0	-0.005018542100998502	CCD S4 on	N	N
[s] Observation start time (MET)	565591296.184000	565590110.72856	CCD S5 on	N	N
Observation start date	2015-12-04T04:40:28	2015-12-04T04:21:50	Number of optional ACIS chips dropped	0	0
[s] Observation end time (MET)	565601369.184000	565602511.17926	On-chip summing requested	N	N
Observation end date	2015-12-04T07:28:21	2015-12-04T07:48:31	Subarray requested	NONE	NONE
Read mode	TIMED	TIMED	Alternating exposures requested	N	N
			[s] Primary exposure time	0.000000	3.1

## 2.3 Aspect



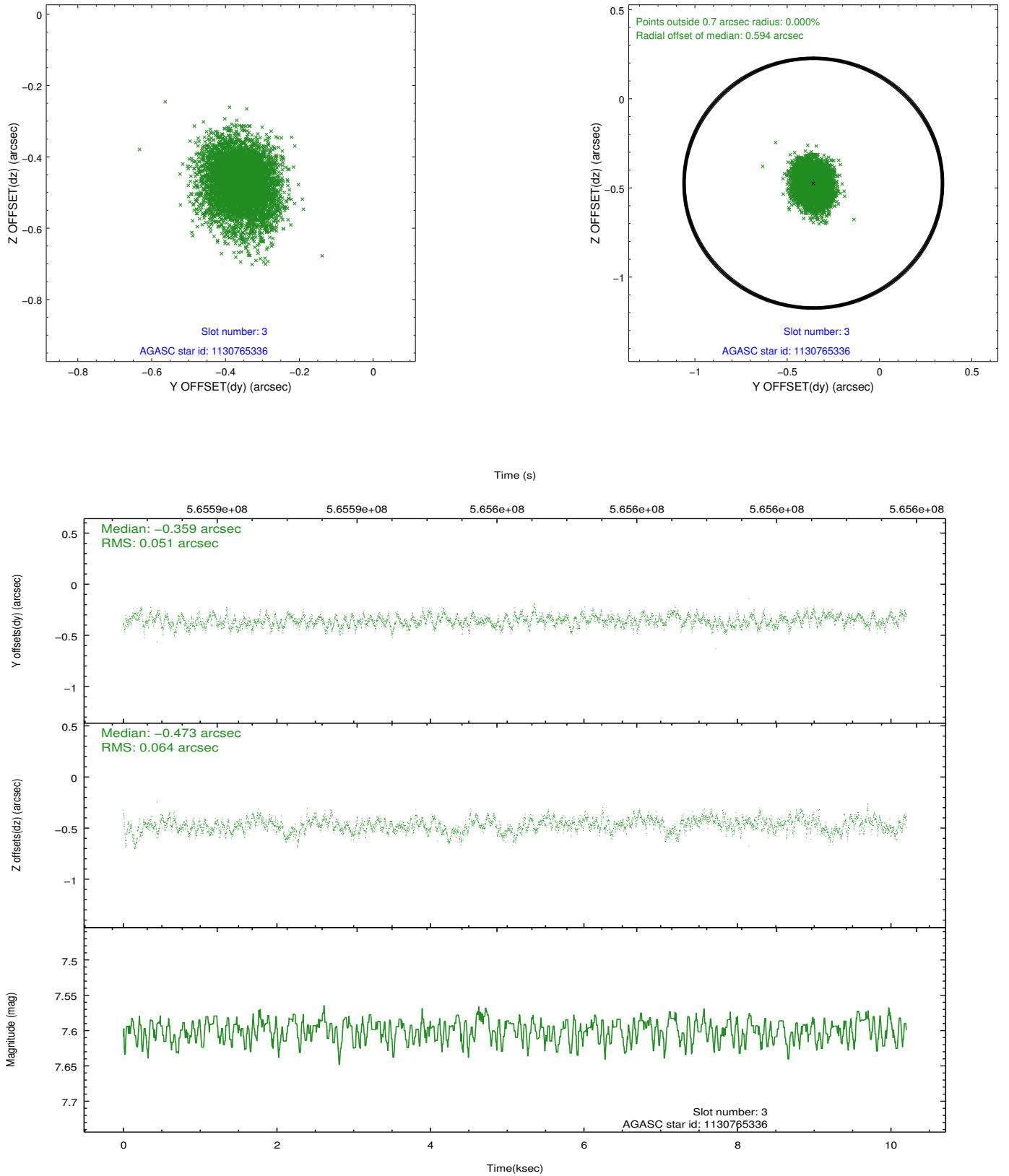


### Slot Statistics

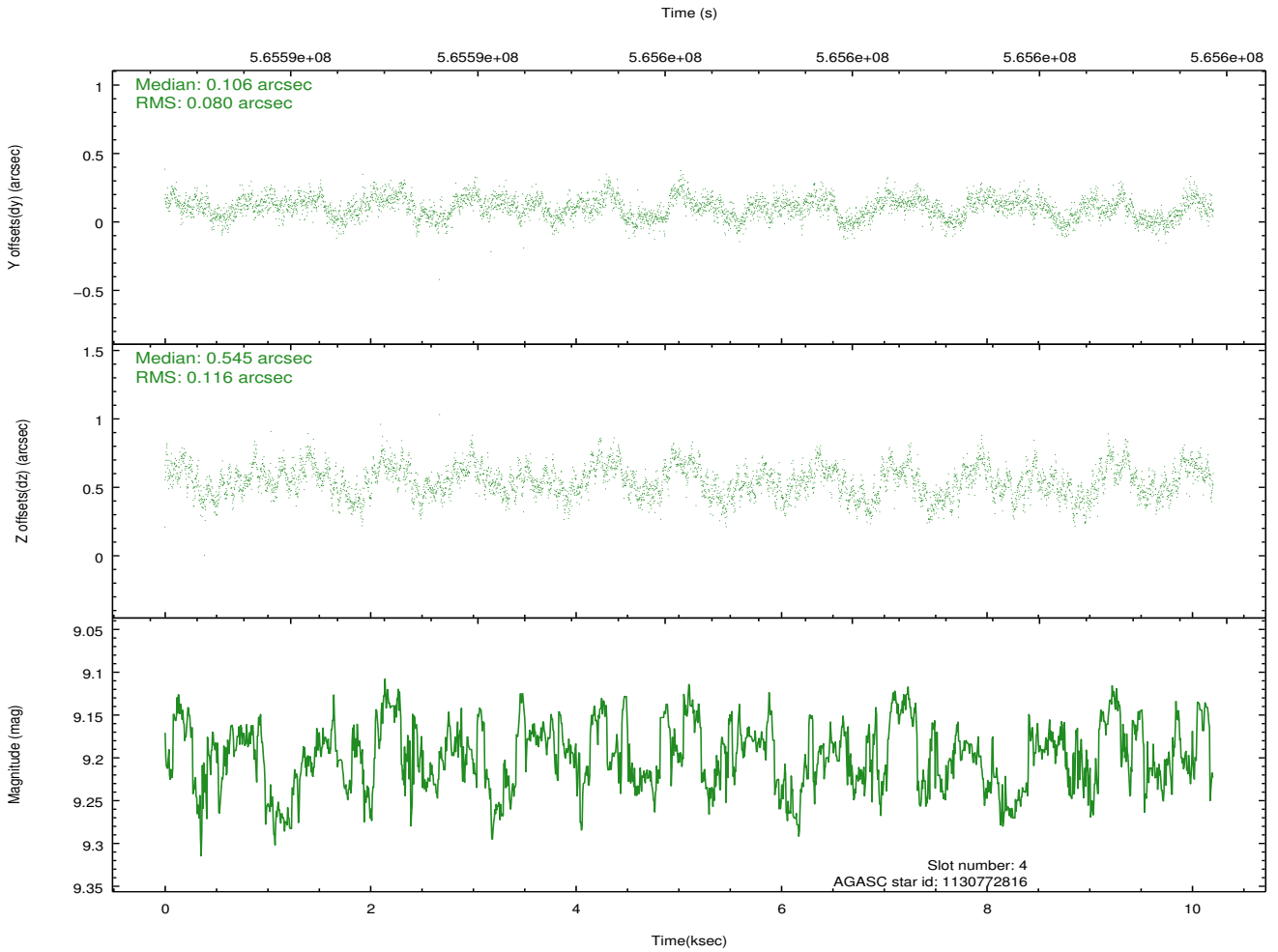
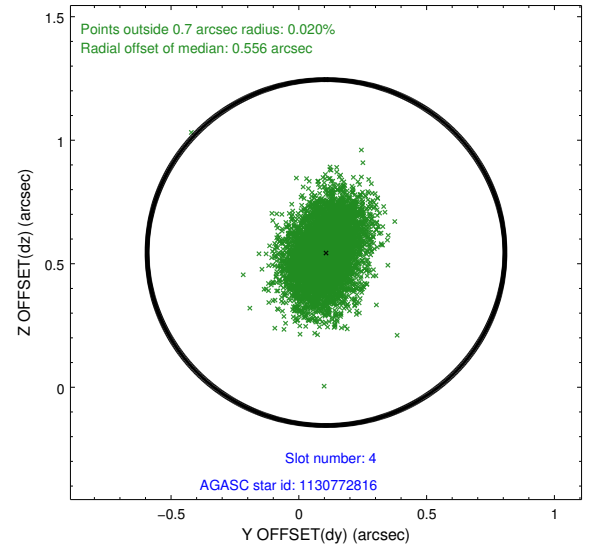
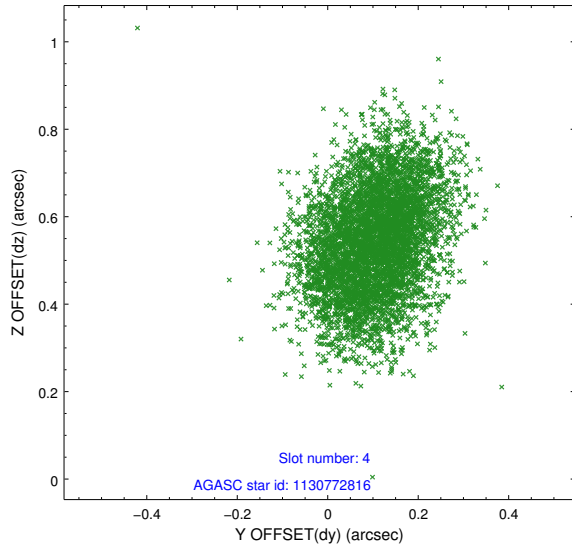
slot	status	used	id	mag	n_pts	med_dy	med_dz	dr1	dr2	ra	dec	mean_y	mean_z
0	FID		ACIS-I-1	7.27	2489	0.086	-0.044	0.021	0.031	0.000000	0.000000	927.38	-841.20
1	FID		ACIS-I-5	7.28	2489	-0.300	0.062	0.008	0.012	0.000000	0.000000	-1820.85	1056.10
2	FID		ACIS-I-6	7.27	2489	0.124	0.052	0.022	0.033	0.000000	0.000000	392.37	1701.21
3	GUIDE	used	1130765336	7.60	4977	-0.359	-0.473	0.087	0.142	163.878870	-58.619099	762.52	670.27
4	GUIDE	used	1130772816	9.20	4979	0.106	0.545	0.152	0.242	165.206832	-59.505121	-2049.22	-2210.41
5	GUIDE	used	1130775552	8.15	4973	0.205	0.071	0.099	0.157	164.773665	-59.168461	-955.10	-1260.93
6	GUIDE	used	1130778448	8.37	4978	0.249	0.083	0.097	0.153	165.097335	-58.983089	-212.86	-1764.11
7	GUIDE	used	1130774016	6.78	4978	-0.206	-0.226	0.093	0.164	163.338200	-58.893456	-369.11	1515.10

## 2.4 Star Slots

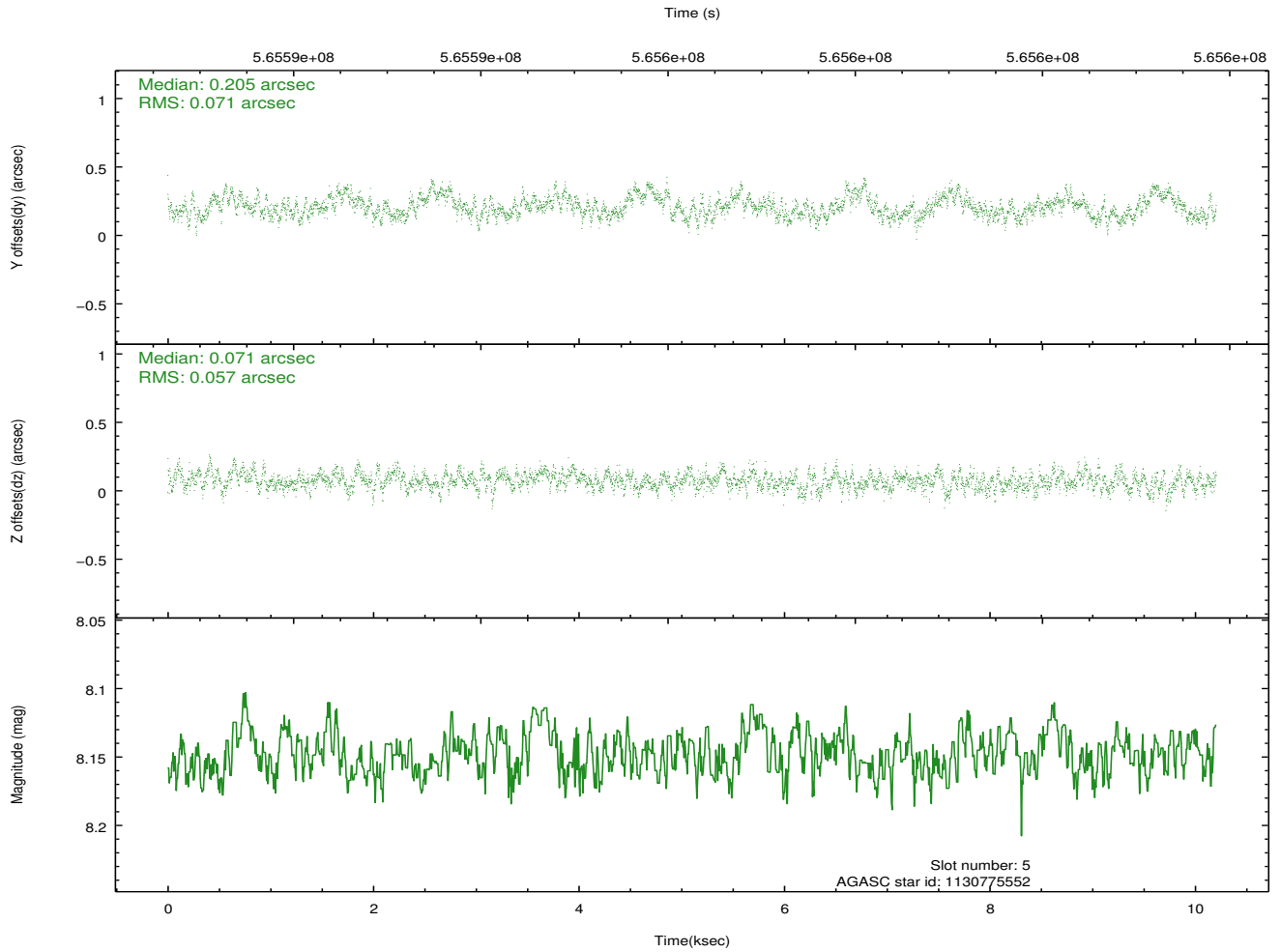
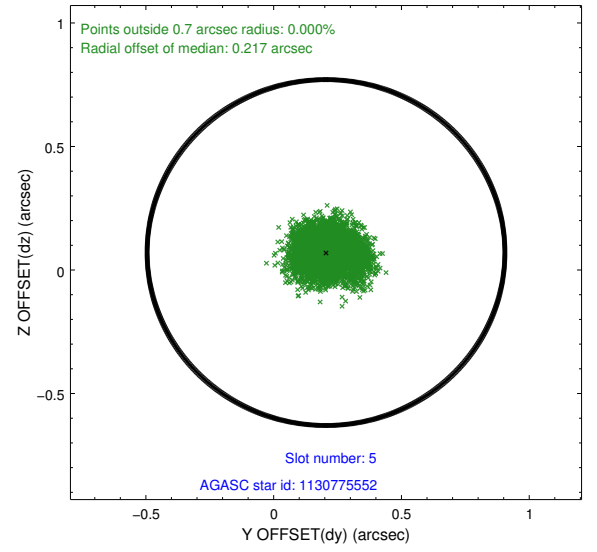
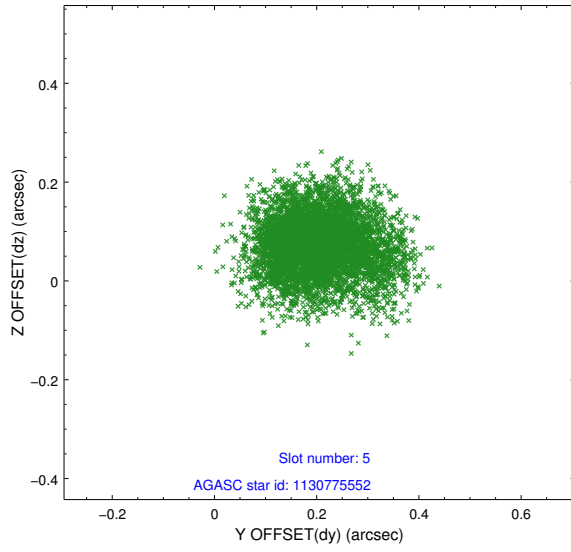
### 2.4.1 Slot 3



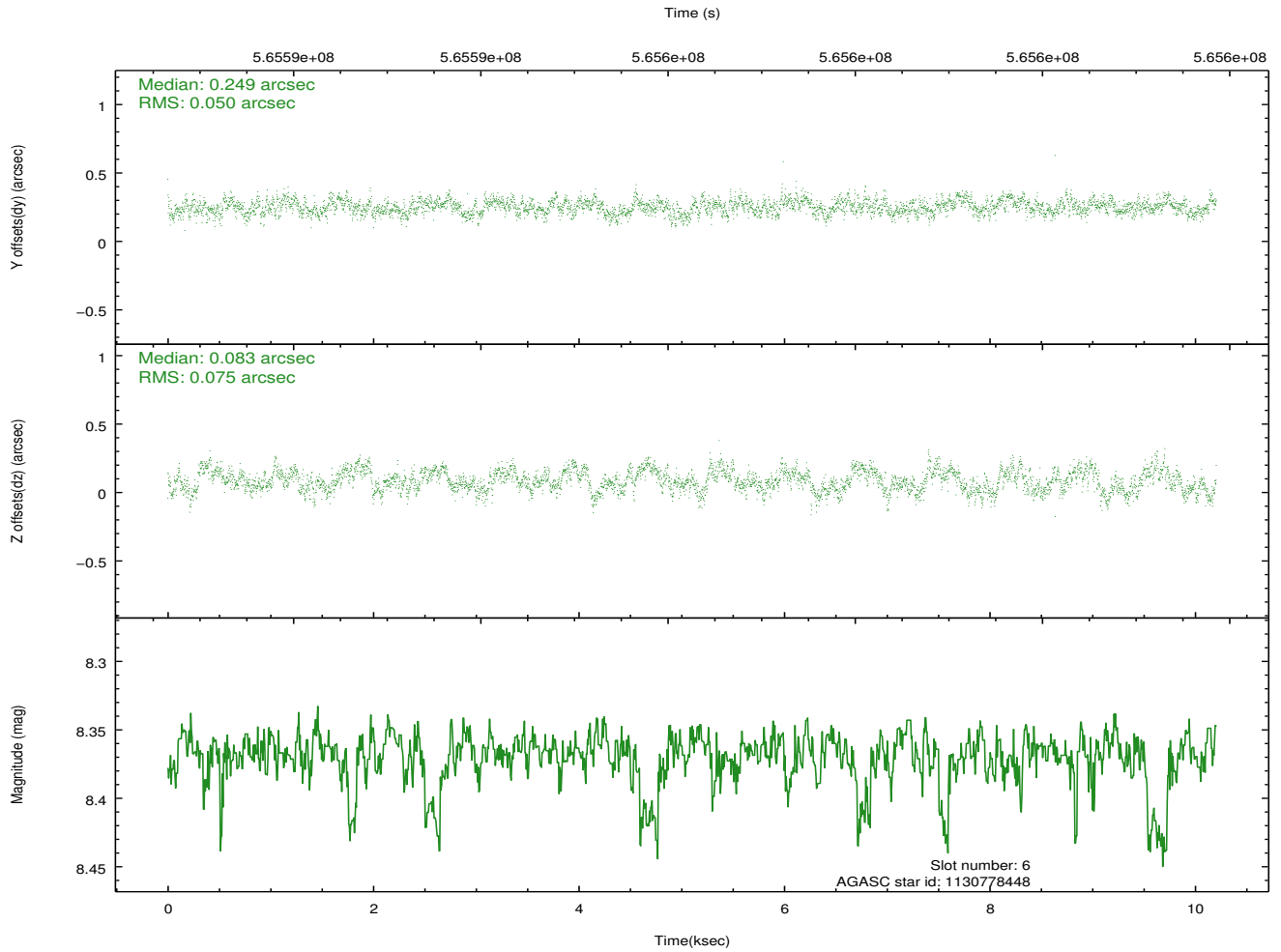
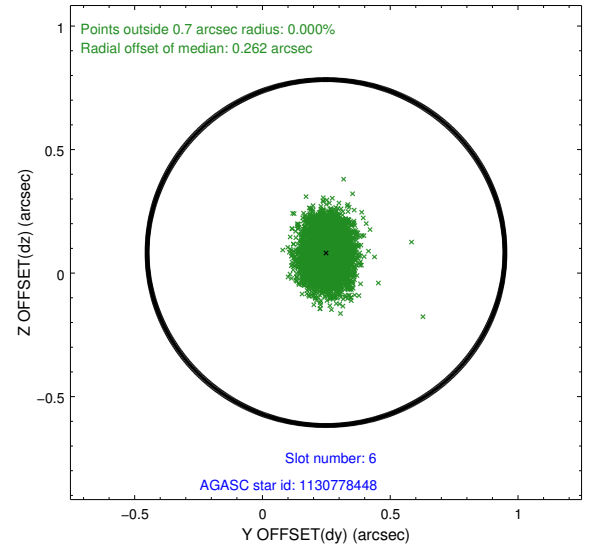
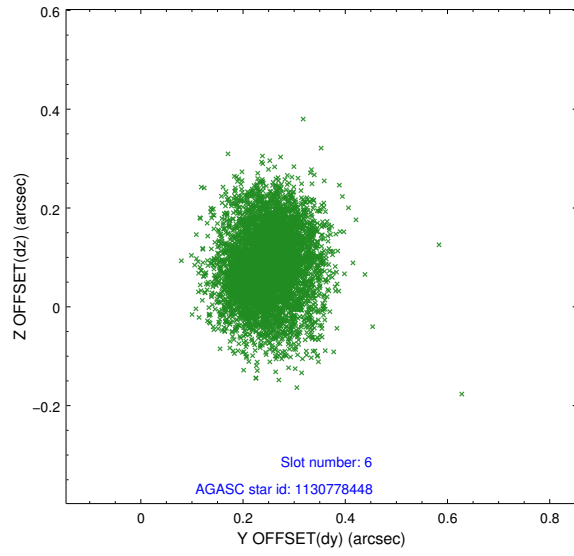
## 2.4.2 Slot 4



### 2.4.3 Slot 5

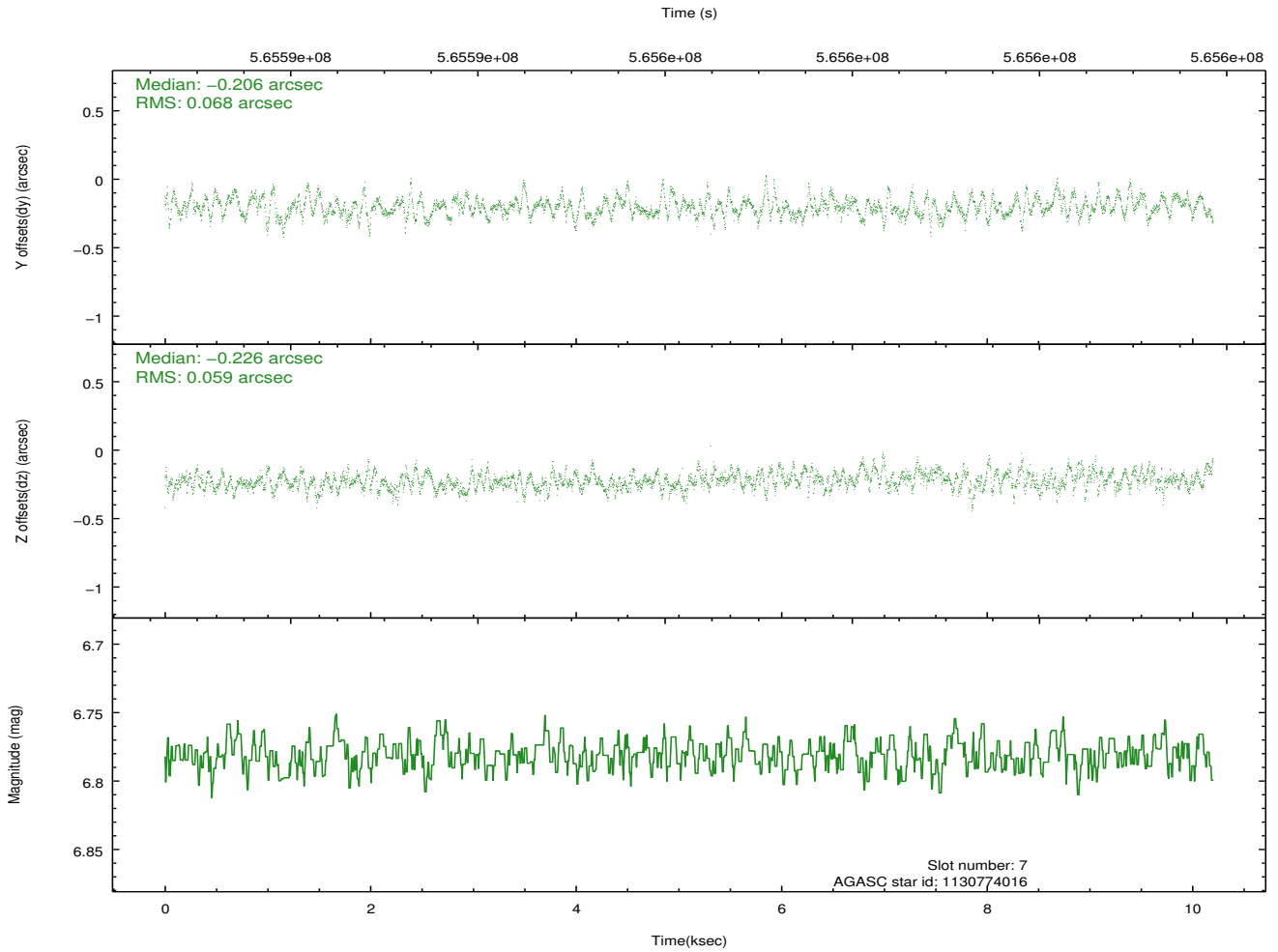
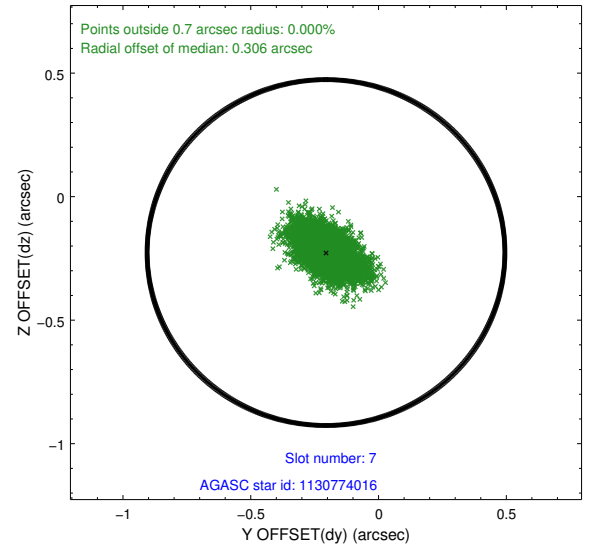
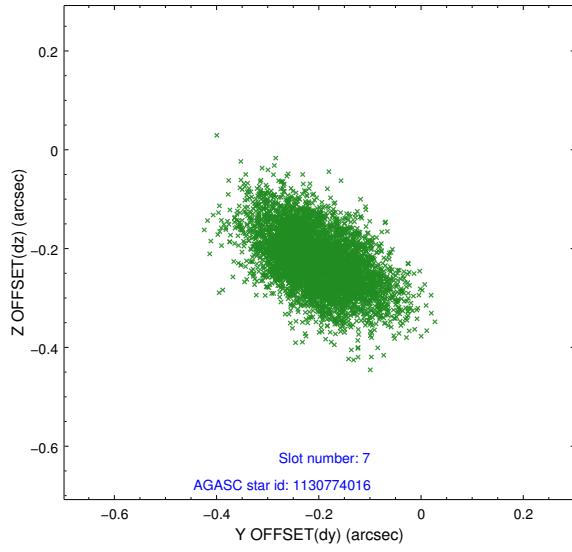


## 2.4.4 Slot 6



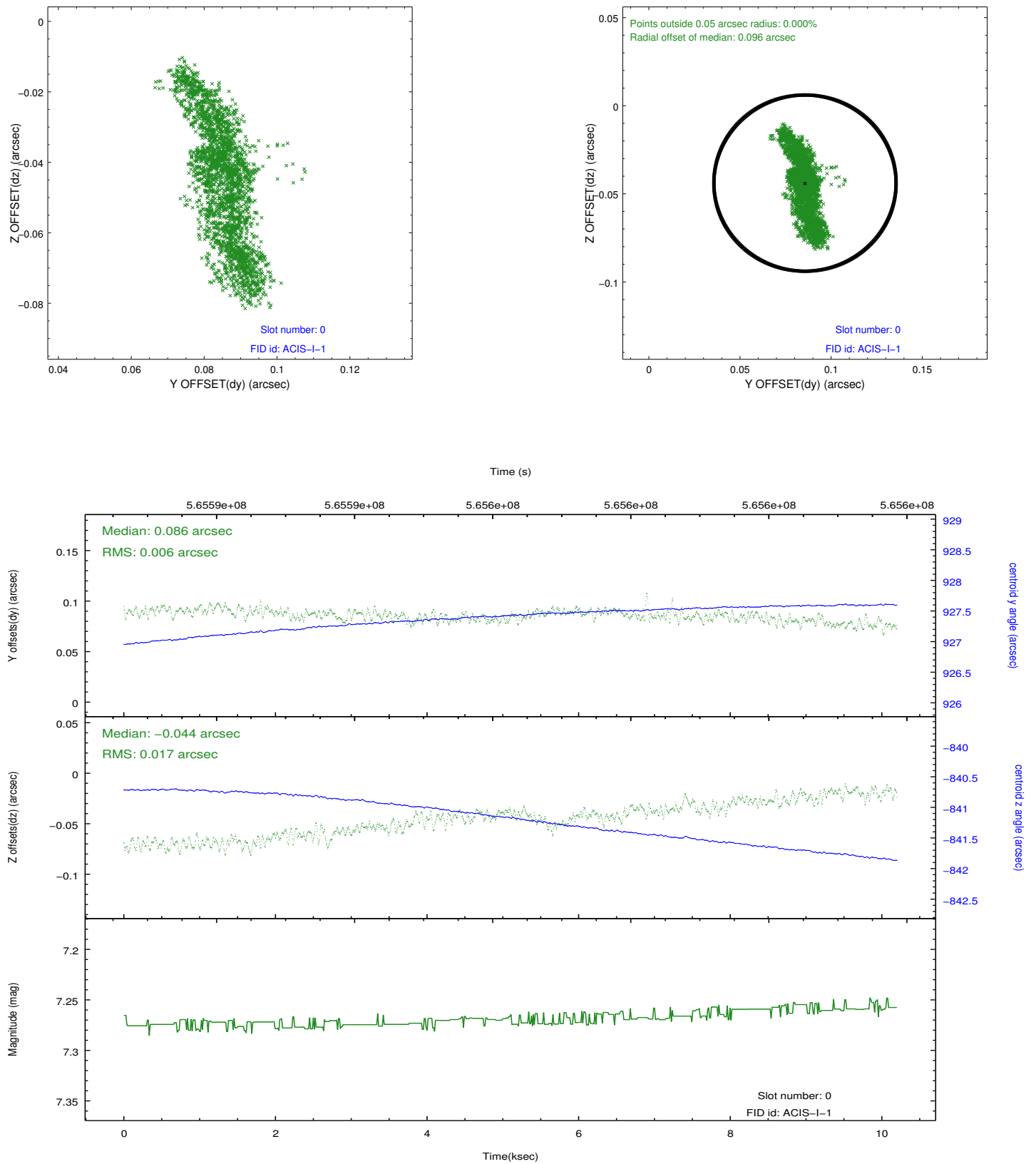


## 2.4.5 Slot 7

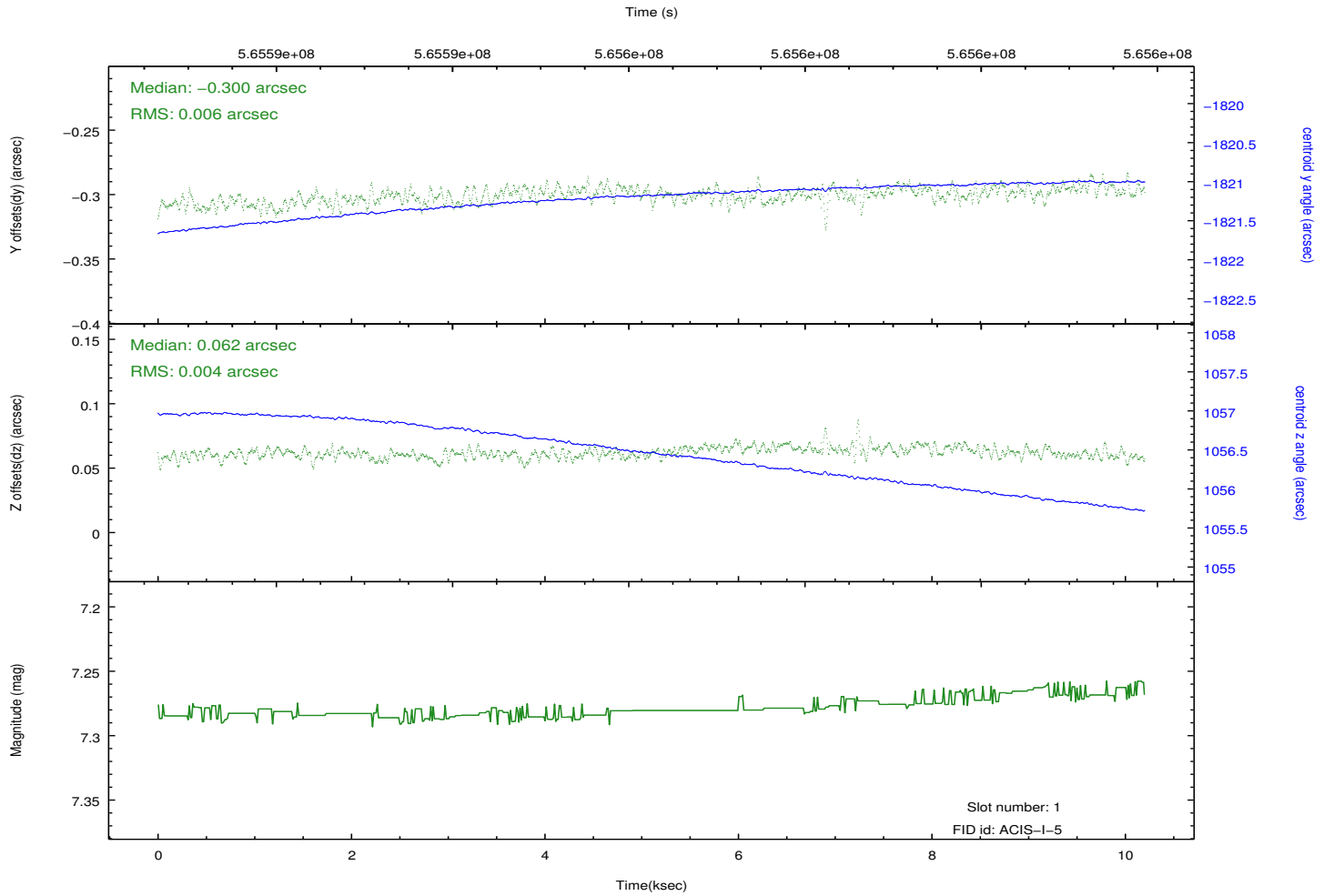
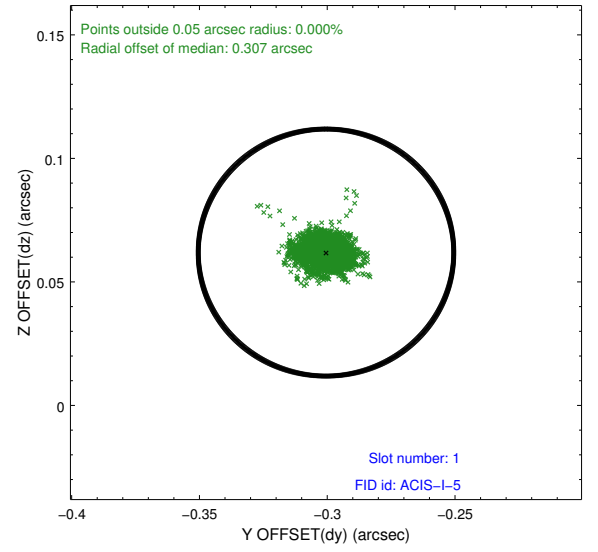
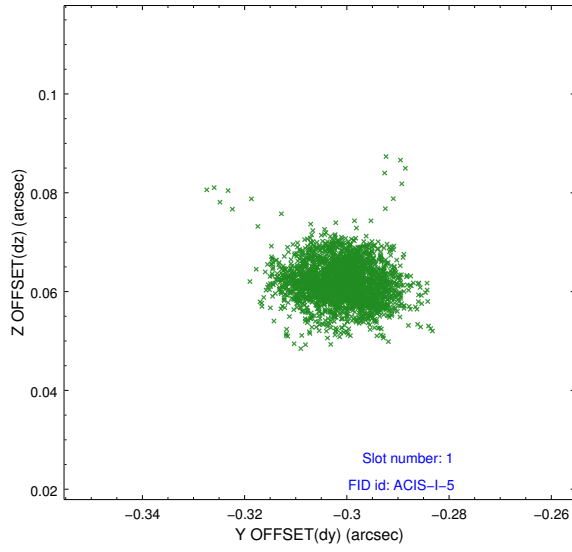


## 2.5 FID Slots

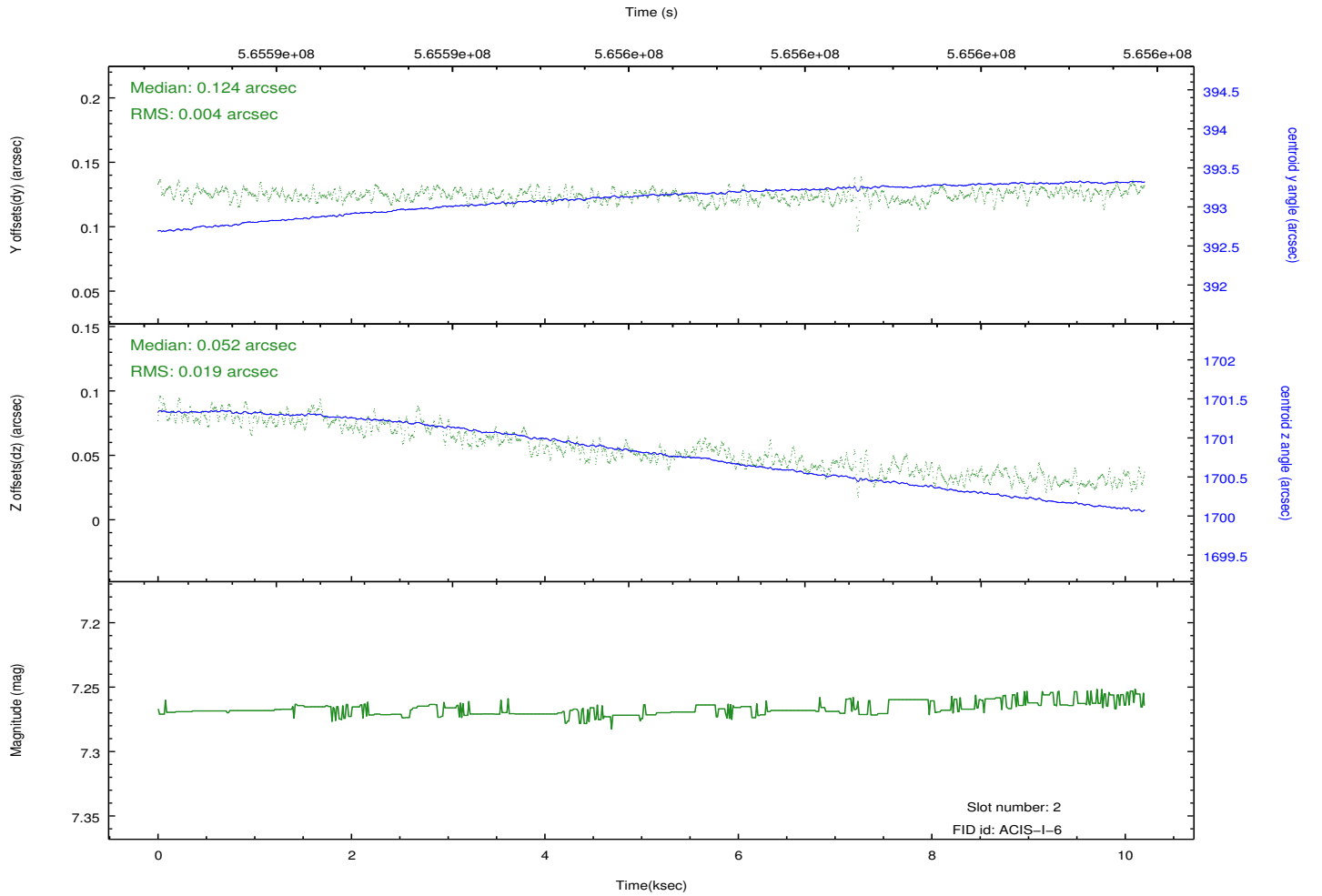
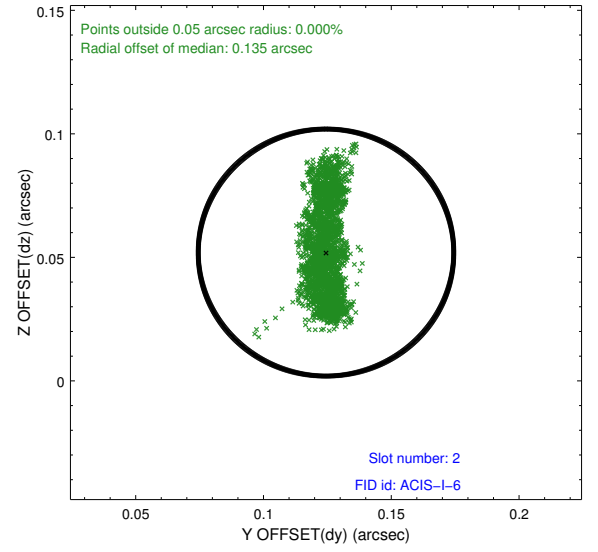
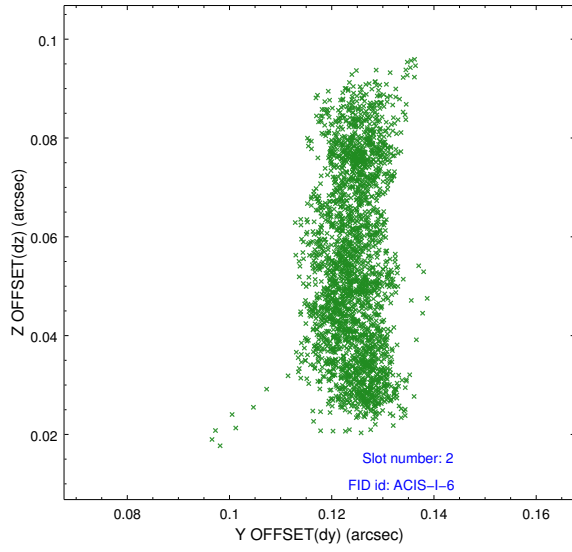
### 2.5.1 Slot 0



## 2.5.2 Slot 1



### 2.5.3 Slot 2



## A Summary

### A.1 Status

V&V Scientist	Joy Nichols
V&V Date (YYYY-MM-DD)	2015.12.07
V&V Edition	1
V&V Disposition and Status	OK
V&V Charge Time	10.133900078058

### A.2 Comments