

V&V Reference Report

L2 ASCDS Version : 10.4

Observation 17678 - L2 Version 1
Chandra X-Ray Center

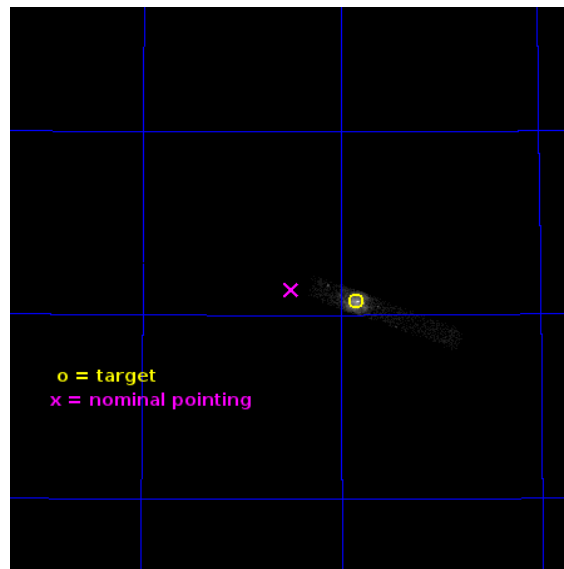
L2 Processing Date : Jun 21 2015

Contents

1	Front	2
2	OBI	3
2.1	OBI	3
2.1.1	Images	3
2.1.2	Bias	3
2.1.3	Parameters	4
2.1.4	Events	4
2.2	Compared Parameters	5
2.3	Aspect	6
2.4	Star Slots	9
2.4.1	Slot 3	9
2.4.2	Slot 4	10
2.4.3	Slot 5	11
2.4.4	Slot 6	12
2.4.5	Slot 7	13
2.5	FID Slots	14
2.5.1	Slot 0	14
2.5.2	Slot 1	15
2.5.3	Slot 2	16
A	Summary	17
A.1	Status	17
A.2	Comments	17

1 Front

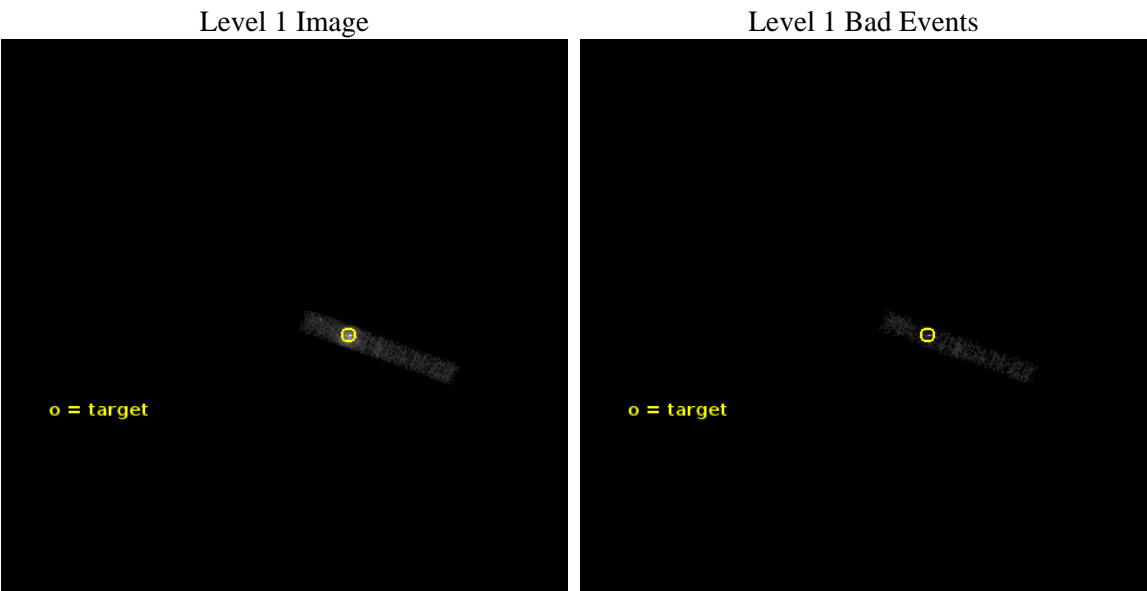
seq_num	401694	Sequence number
obs_id	17678	Observation id
title	The brightening of M82: The intermediate mass black hole or ultra luminous X-ray pulsar?	Proposal title
observer	Dr Murray Brightman	Principal investigator
object	M82	Source name
dtcycle	0	
cycle	P	events from which exps? Prim/Second/Both
ra_targ	148.96265	Observer's specified target RA [deg]
dec_targ	69.679171	Observer's specified target Dec [deg]
ra_nom	149.12509620273	Nominal RA [deg]
dec_nom	69.689991416321	Nominal Dec [deg]
roll_nom	290.46288095146	Nominal Roll [deg]
revision	1	Processing version of data
ontime	10102.5	Sum of GTIs [s]
livetime	9336.1858642614	Livetime [s]
ontime1	10102.5	Sum of GTIs [s]
l2events	25034	Number of level 2 events



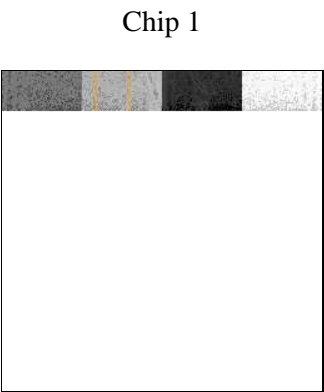
2 OBI

2.1 OBI

2.1.1 Images



2.1.2 Bias



2.1.3 Parameters

obi_num	0	Obi number	sched_exp_time	10000.000000	[s] Scheduled observation exposure time
ascdsver	10.4	Processing system revision	ontime	10102.5	Sum of GTIs [s]
caldsver	4.6.7	 	ontime1	10102.5	Sum of GTIs [s]
date	2015-06-21T15:23:41	Date and time of file creation	l1events	38113	Number of level 1 events
revision	1	Processing version of data			

2.1.4 Events

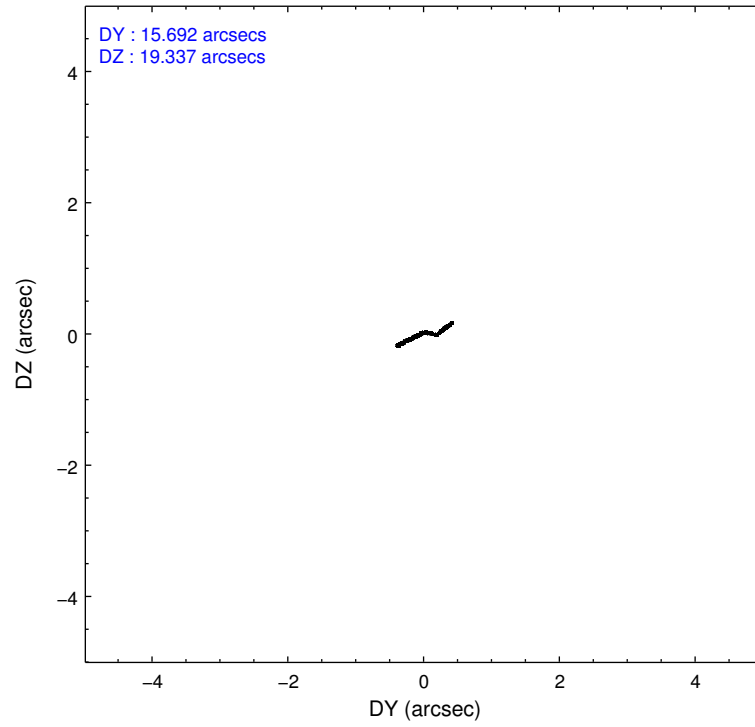
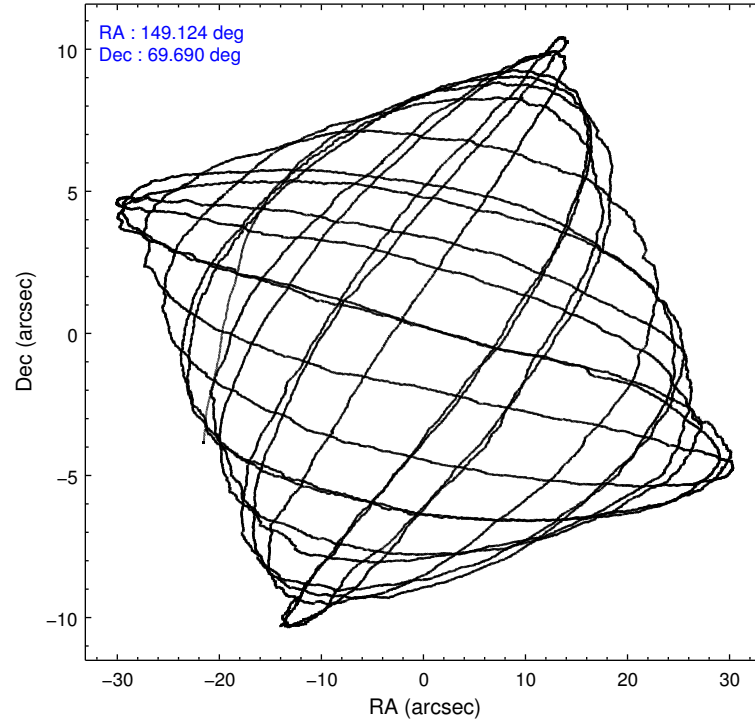
	ccd 1
level 1 events	38113
rejected events	9197
rejected %	24%

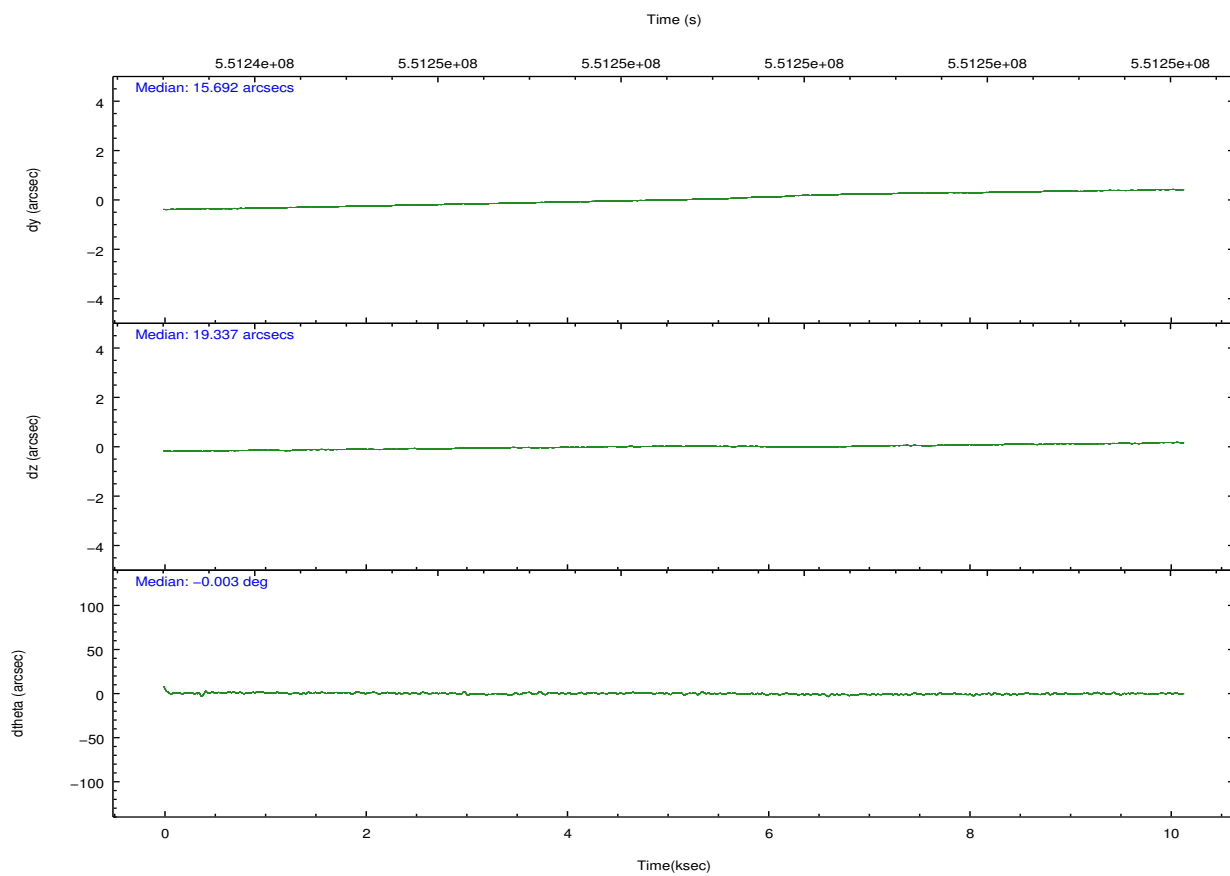
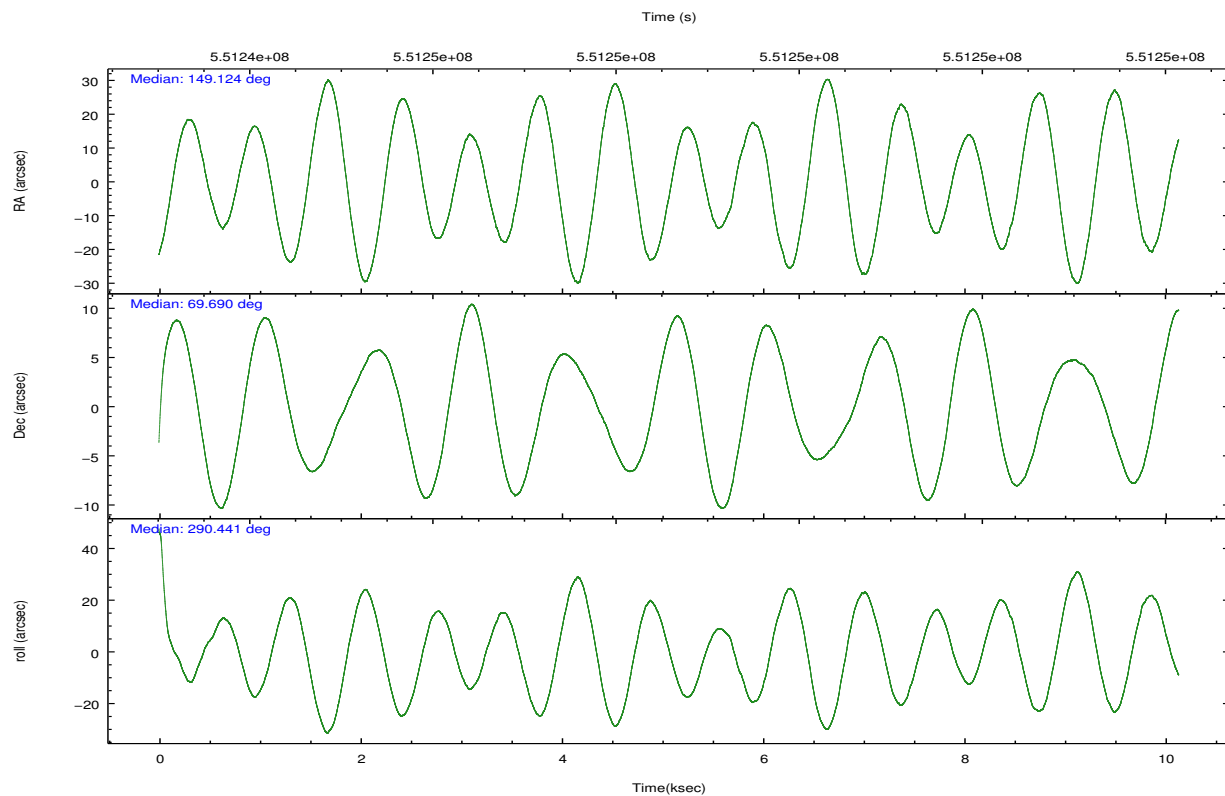
	ccd 1
grade 0 events	20730
	54%
grade 1 events	771
	2%
grade 2 events	4009
	10%
grade 3 events	1333
	3%
grade 4 events	1315
	3%
grade 5 events	974
	2%
grade 6 events	1531
	4%
grade 7 events	7450
	19%

2.2 Compared Parameters

Parameter	Planned	Actual	Parameter	Planned	Actual
Instrument	ACIS	ACIS	Obspar format version number	7	7
Detector	ACIS-1	ACIS-1	Obspar file type	PREDICTED	ACTUAL
Grating	NONE	NONE	Obspar update status	NONE	UPDATED
Data mode	FAINT	FAINT	Number of optional ACIS chips dropped	0	0
Observation mode	POINTING	POINTING	On-chip summing requested	N	N
[deg] Pointing RA	149.063546	149.1250962027327	Subarray requested	CUSTOM	1/8
[deg] Pointing Dec	69.707464	69.68999141632115	Subarray start row	897	897
[deg] Pointing Roll	290.311882	290.4628809514613	Subarray row count	128	128
[mm] SIM focus pos	-0.782348	-0.7809083437167272	Alternating exposures requested	N	N
[mm] SIM defocus	0	0.001439871863259334	[s] Primary exposure time	0.000000	0.5
[mm] SIM translation stage pos	-233.592463	-233.5874344608287			
[mm] SIM translation stage offset	0	-0.005018542100998502			
[s] Observation start time (MET)	551243644.184000	551241976.16714			
Observation start date	2015-06-21T03:12:57	2015-06-21T02:46:16			
[s] Observation end time (MET)	551253644.184000	551254659.00536			
Observation end date	2015-06-21T05:59:37	2015-06-21T06:17:39			
Read mode	TIMED	TIMED			

2.3 Aspect



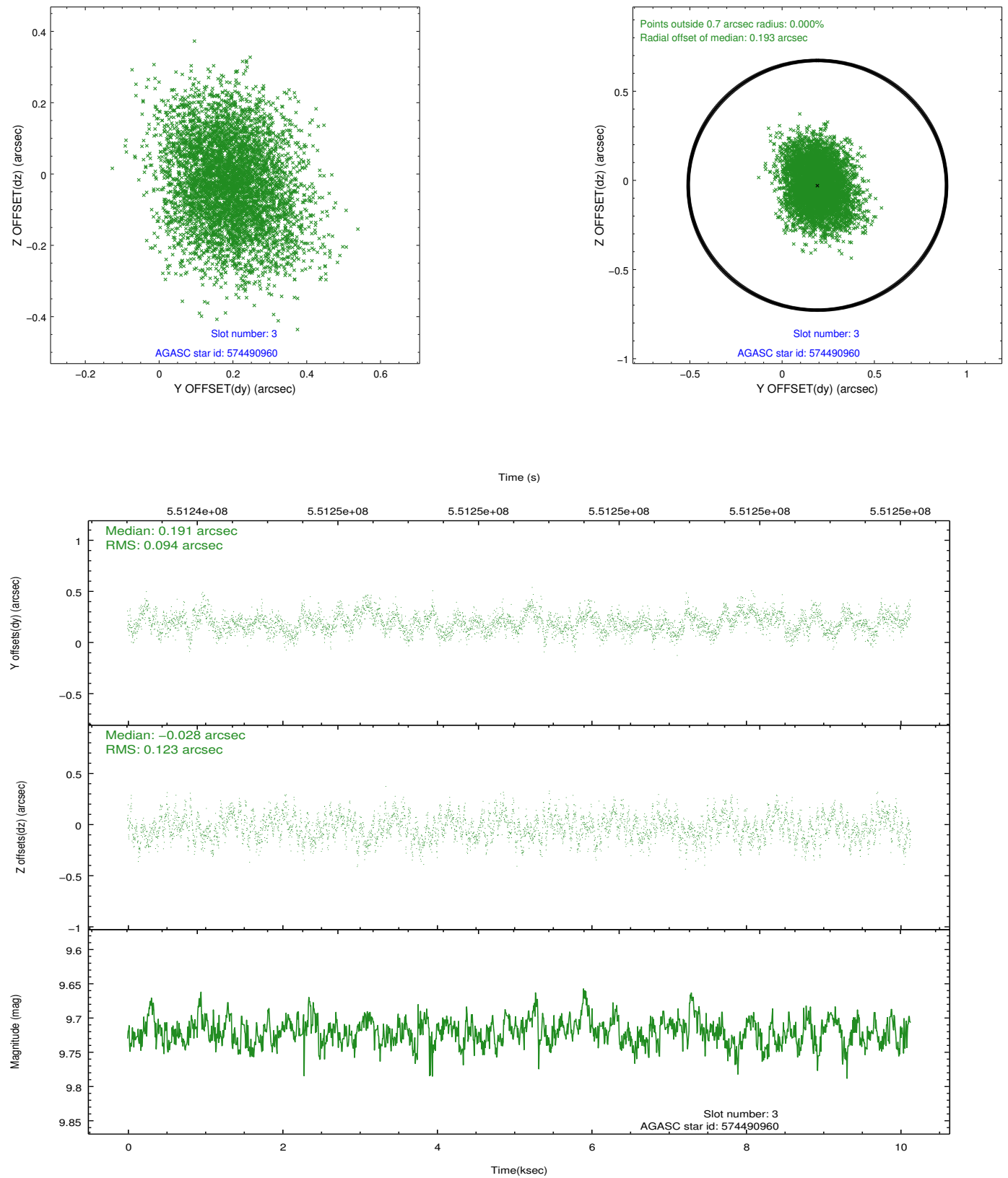


Slot Statistics

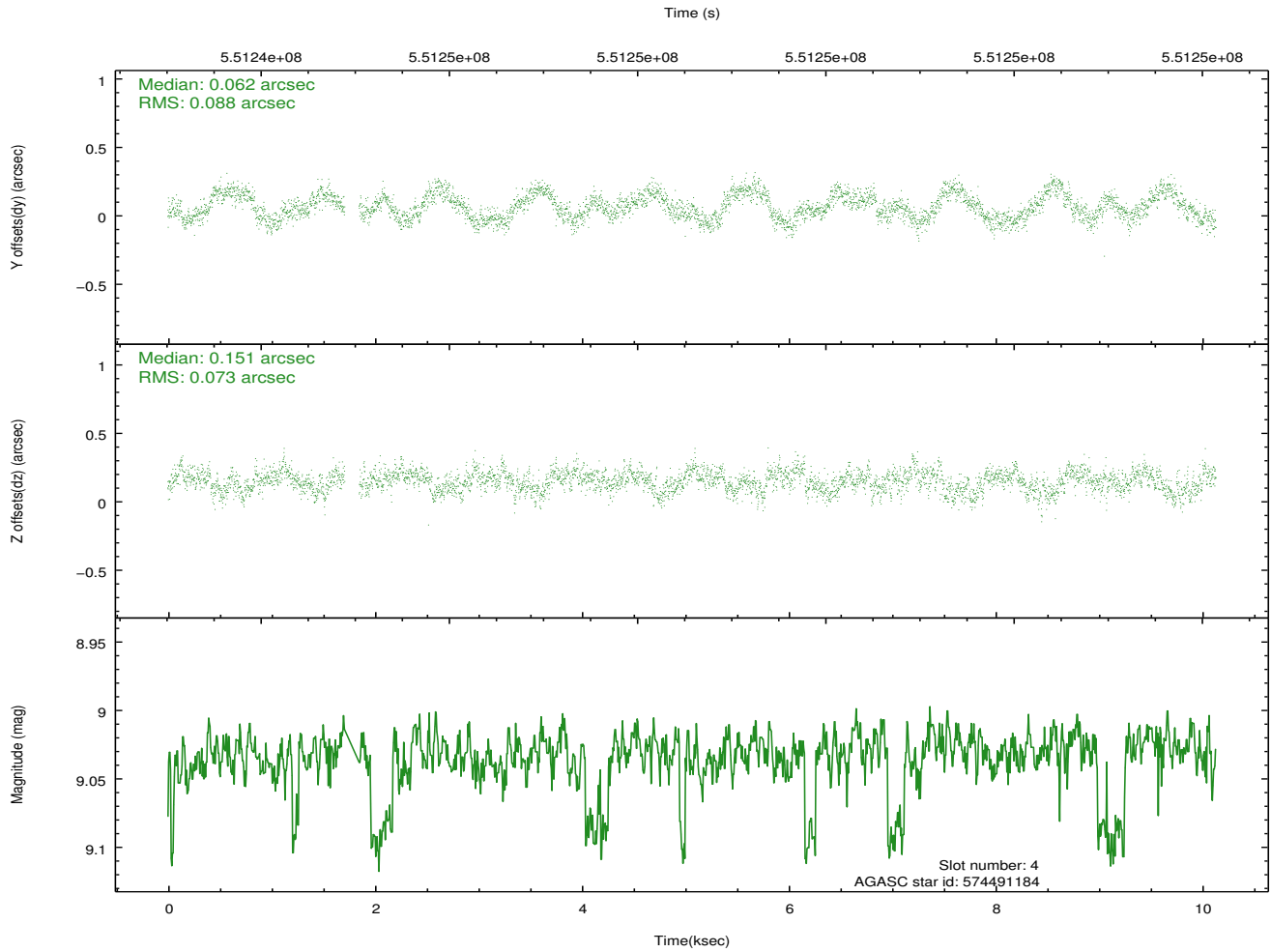
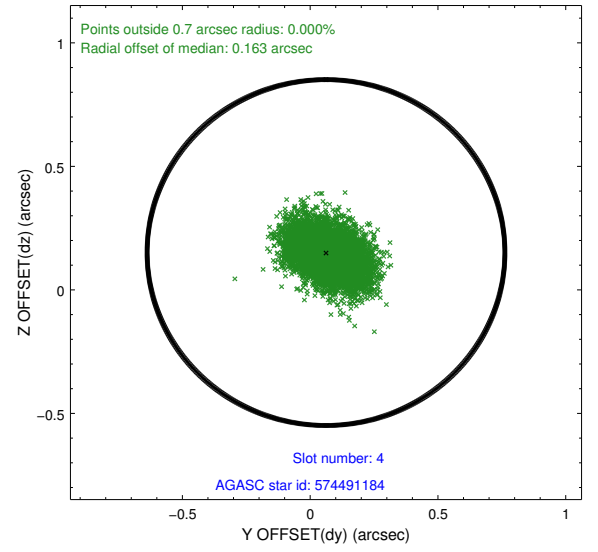
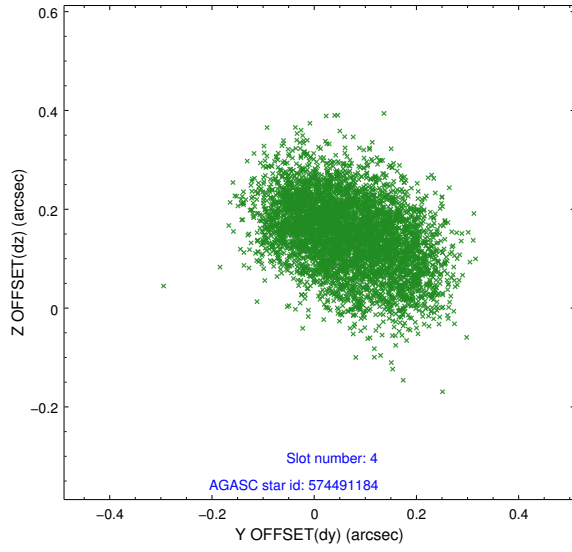
slot	status	used	id	mag	n_pts	med_dy	med_dz	dr1	dr2	ra	dec	mean_y	mean_z
0	FID		ACIS-I-2	6.98	2471	-0.116	-0.023	0.012	0.020	0.000000	0.000000	-770.55	-849.44
1	FID		ACIS-I-4	7.01	2472	0.254	0.073	0.008	0.013	0.000000	0.000000	2143.60	1056.61
2	FID		ACIS-I-5	7.07	2471	-0.240	0.019	0.011	0.017	0.000000	0.000000	-1823.87	1054.93
3	GUIDE	used	574490960	9.72	4942	0.191	-0.028	0.166	0.267	148.185918	69.658768	-222.88	-1087.77
4	GUIDE	used	574491184	9.03	4873	0.062	0.151	0.125	0.196	148.582453	69.768699	-416.19	-483.61
5	GUIDE	used	574491280	9.32	4939	-0.165	-0.139	0.133	0.200	148.611567	69.450135	669.81	-857.91
6	GUIDE	used	574491872	9.24	4939	0.000	0.299	0.112	0.189	147.207613	69.765453	-1024.91	-2083.85
7	GUIDE	used	574886496	8.49	4939	-0.096	-0.281	0.086	0.144	148.945563	70.041136	-1177.33	280.78

2.4 Star Slots

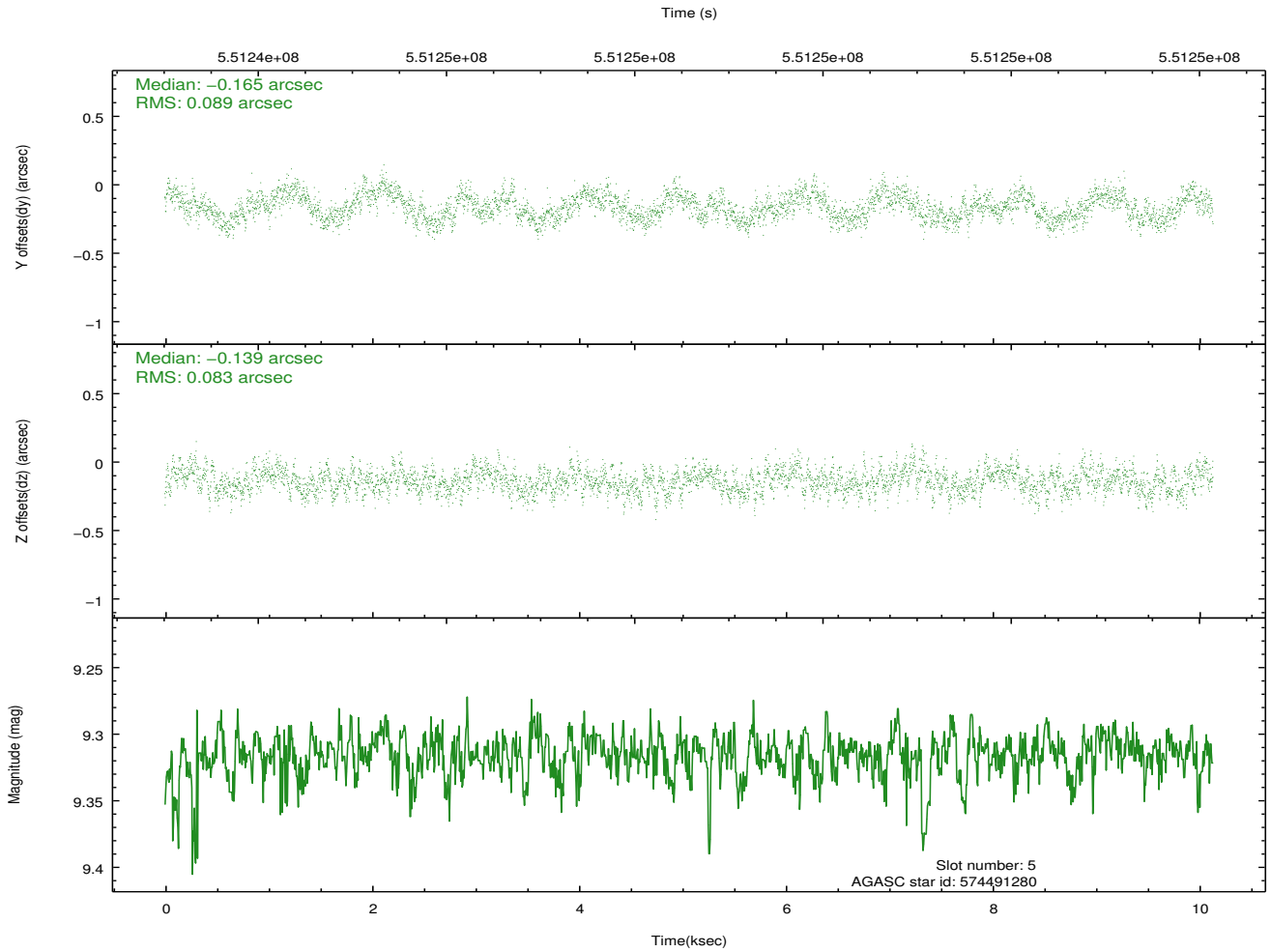
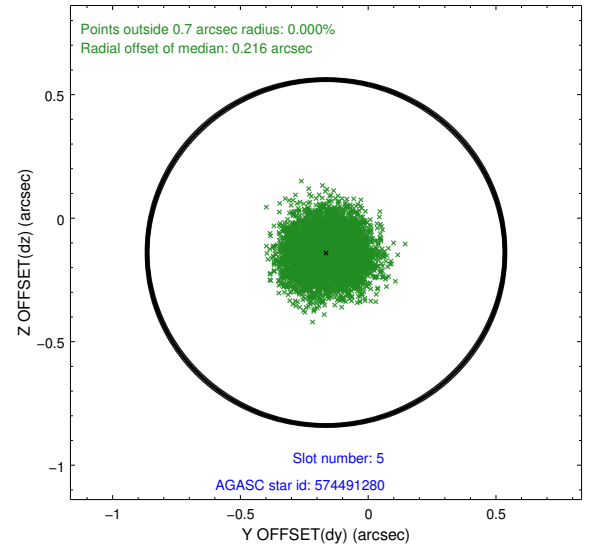
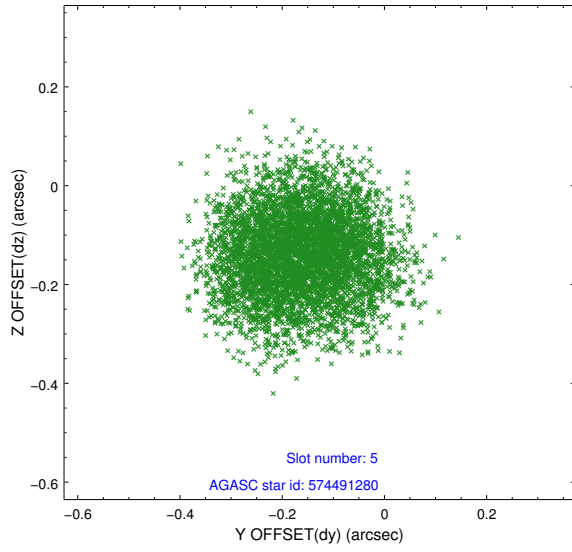
2.4.1 Slot 3



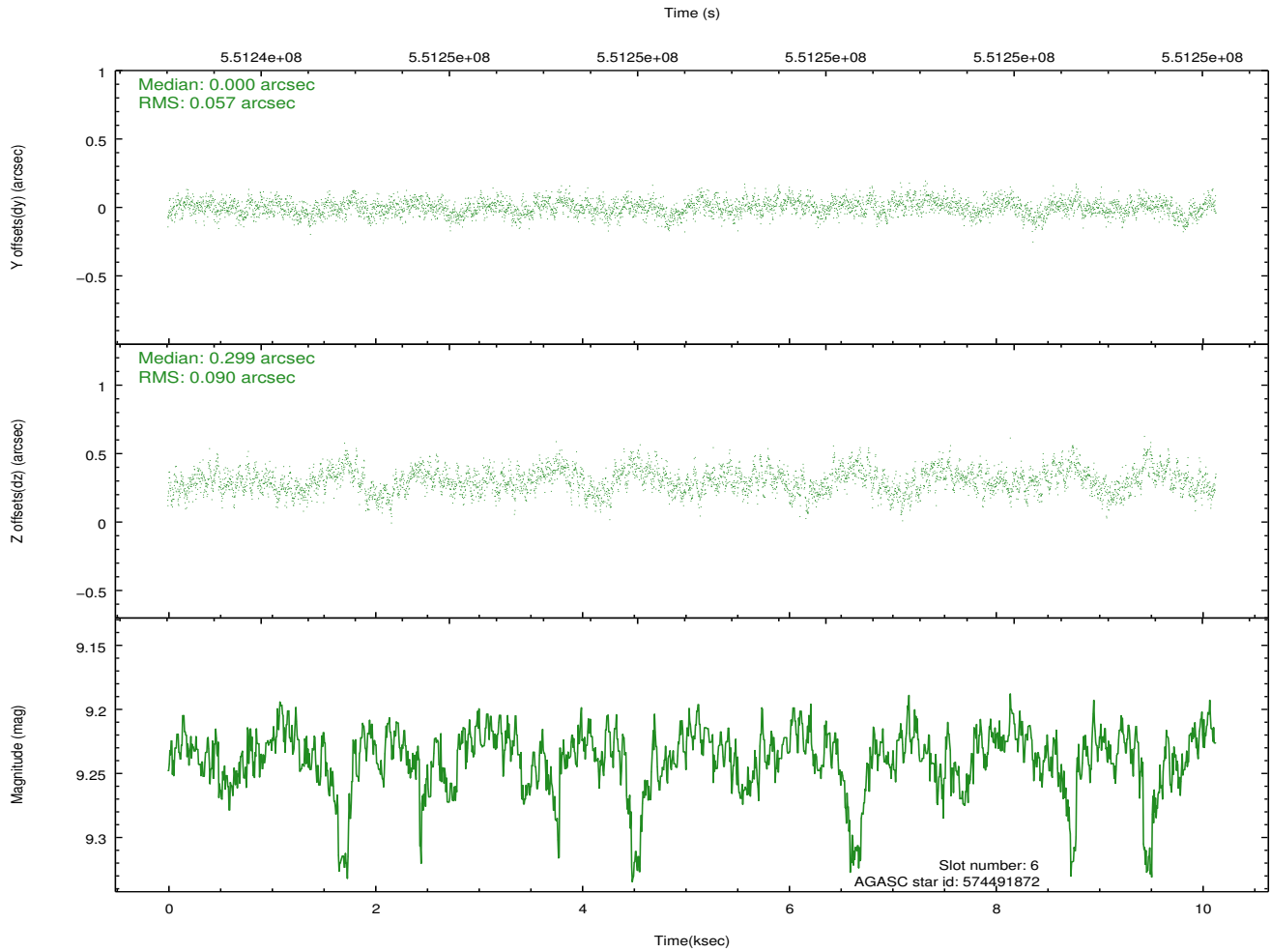
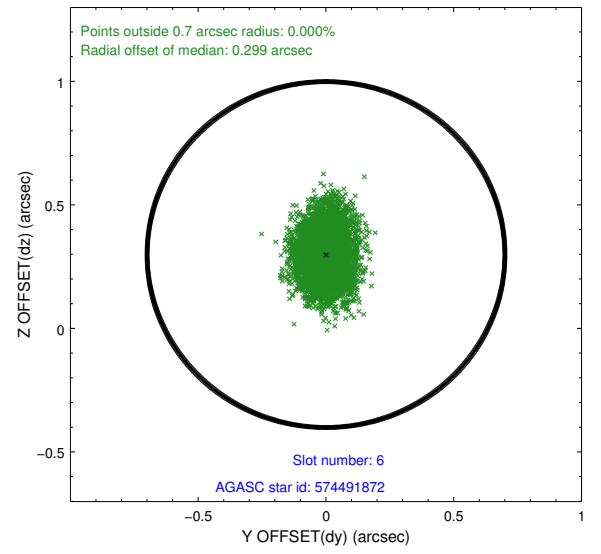
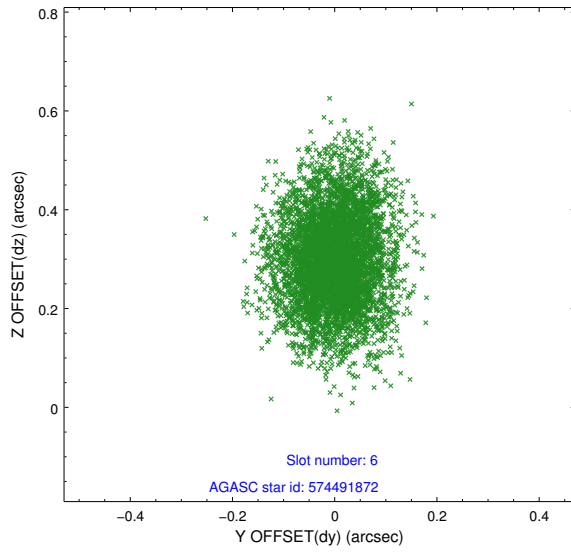
2.4.2 Slot 4



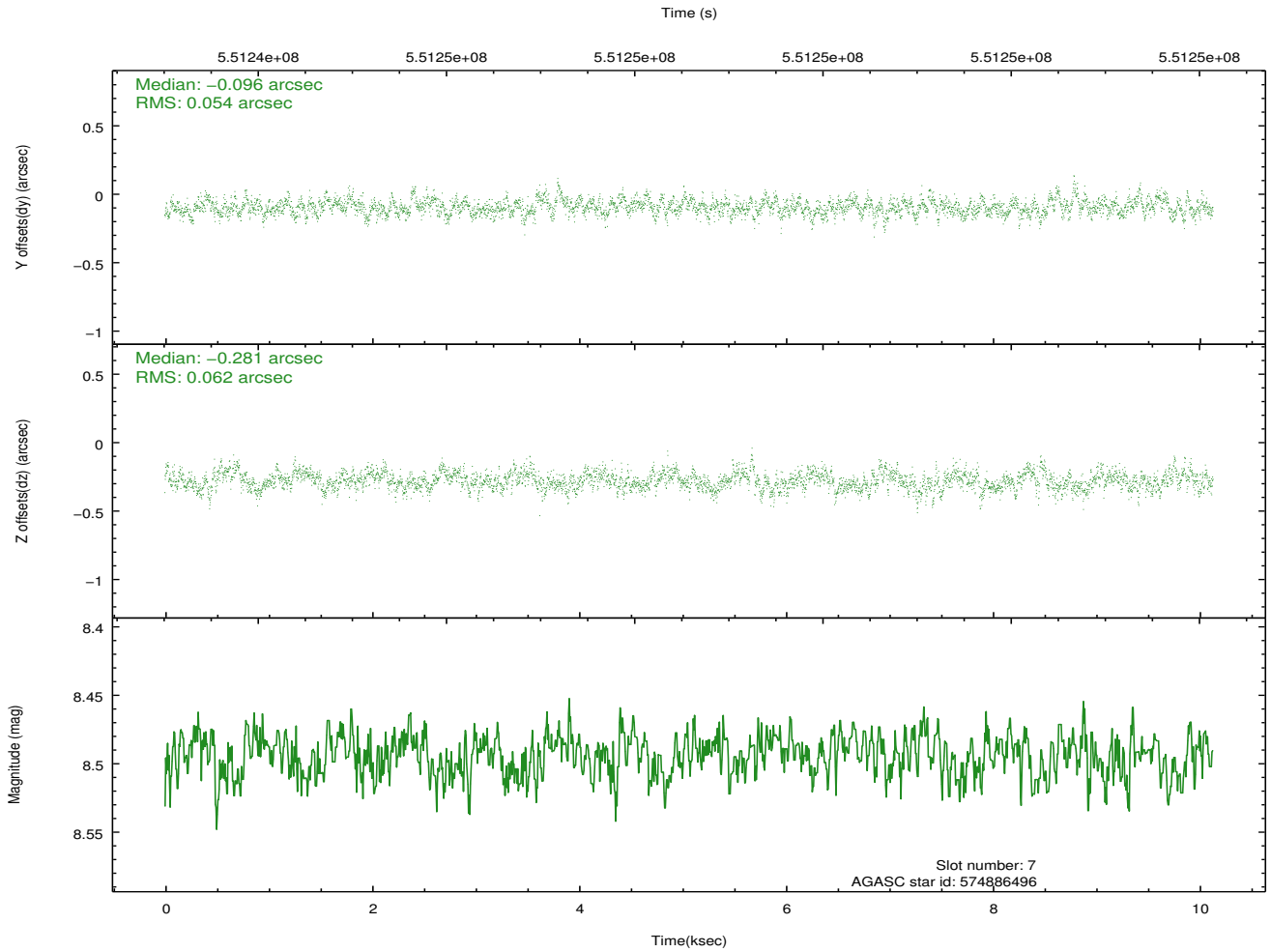
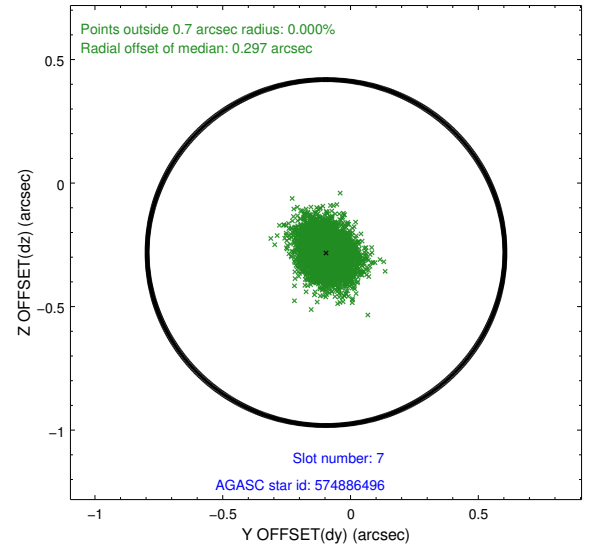
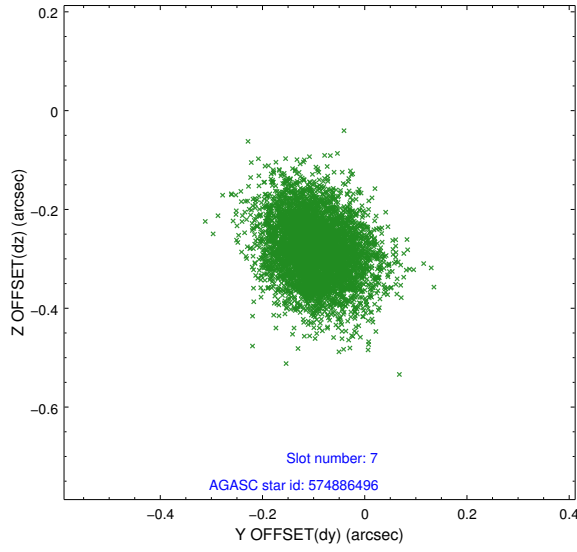
2.4.3 Slot 5



2.4.4 Slot 6

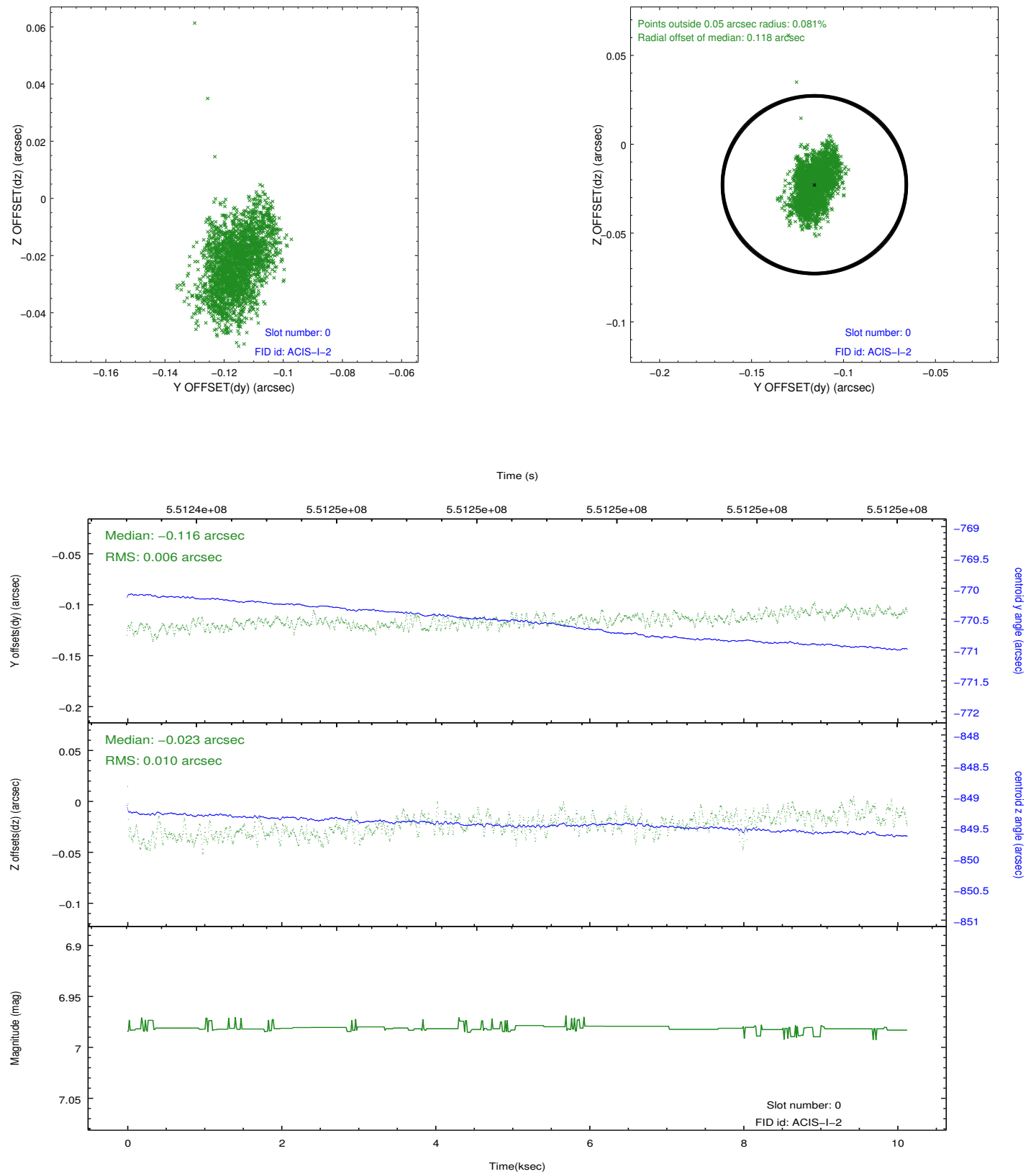


2.4.5 Slot 7

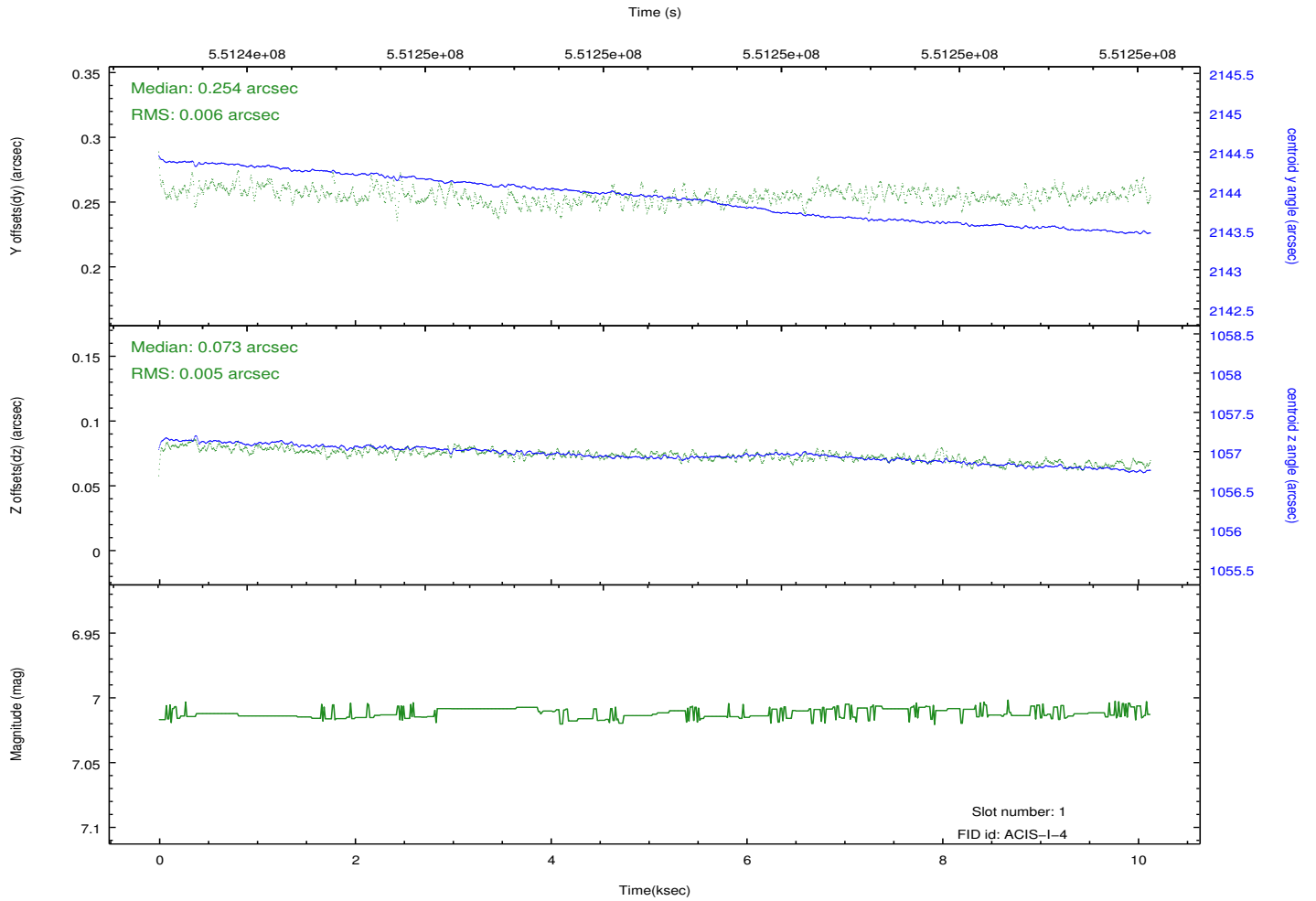
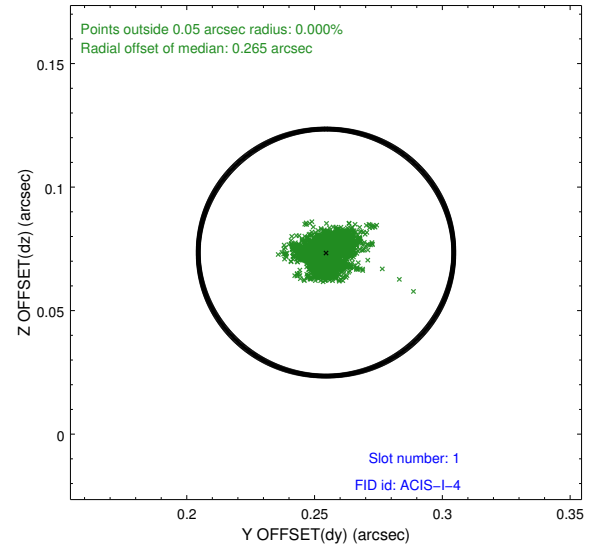
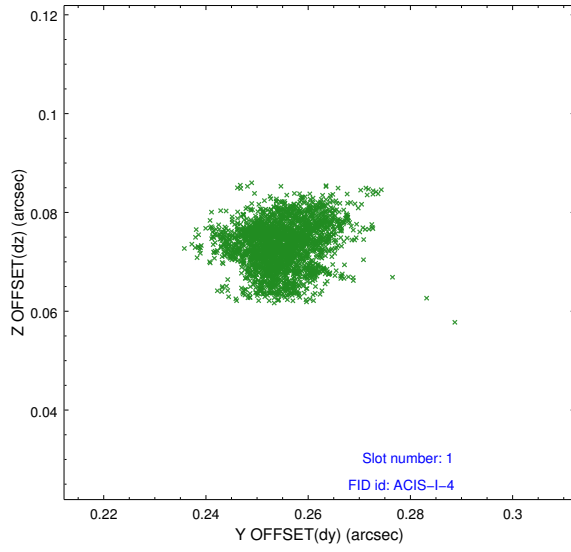


2.5 FID Slots

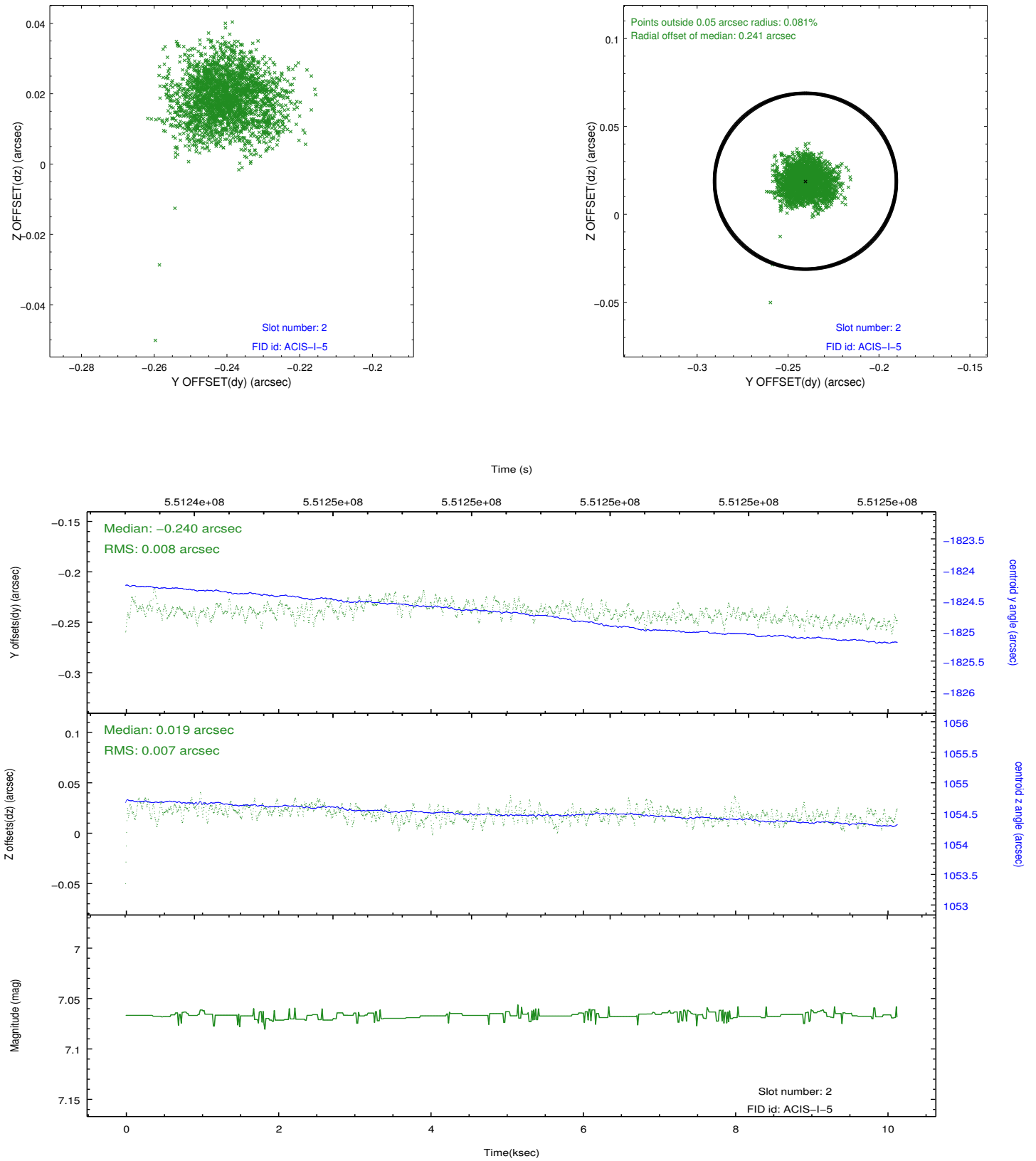
2.5.1 Slot 0



2.5.2 Slot 1



2.5.3 Slot 2



A Summary

A.1 Status

V&V Scientist	Beth Sundheim
V&V Date (YYYY-MM-DD)	2015.06.21
V&V Edition	1
V&V Disposition and Status	OK
V&V Charge Time	10.1025

A.2 Comments