

# V&V Reference Report

## L2 ASCDS Version : 10.4

Observation 16676 - L2 Version 2  
Chandra X-Ray Center

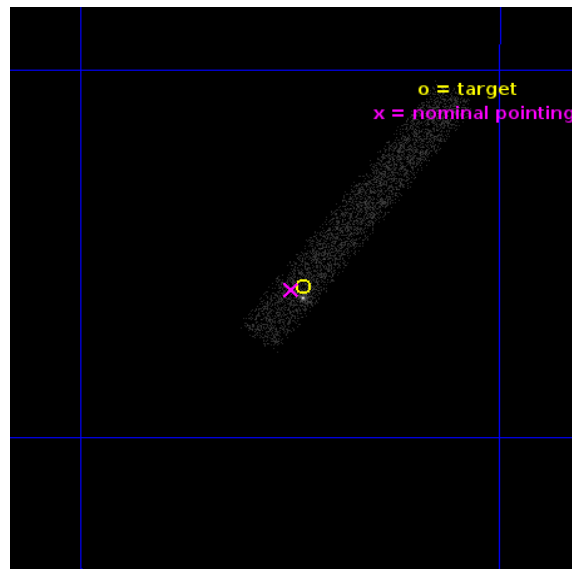
L2 Processing Date : Jul 7 2015

## Contents

<b>1</b>	<b>Front</b>	<b>2</b>
<b>2</b>	<b>OBI</b>	<b>3</b>
2.1	OBI . . . . .	3
2.1.1	Images . . . . .	3
2.1.2	Bias . . . . .	3
2.1.3	Parameters . . . . .	4
2.1.4	Events . . . . .	4
2.2	Compared Parameters . . . . .	5
2.3	Aspect . . . . .	6
2.4	Star Slots . . . . .	9
2.4.1	Slot 3 . . . . .	9
2.4.2	Slot 4 . . . . .	10
2.4.3	Slot 5 . . . . .	11
2.4.4	Slot 6 . . . . .	12
2.4.5	Slot 7 . . . . .	13
2.5	FID Slots . . . . .	14
2.5.1	Slot 0 . . . . .	14
2.5.2	Slot 1 . . . . .	15
2.5.3	Slot 2 . . . . .	16
<b>A</b>	<b>Summary</b>	<b>17</b>
A.1	Status . . . . .	17
A.2	Comments . . . . .	17

# 1 Front

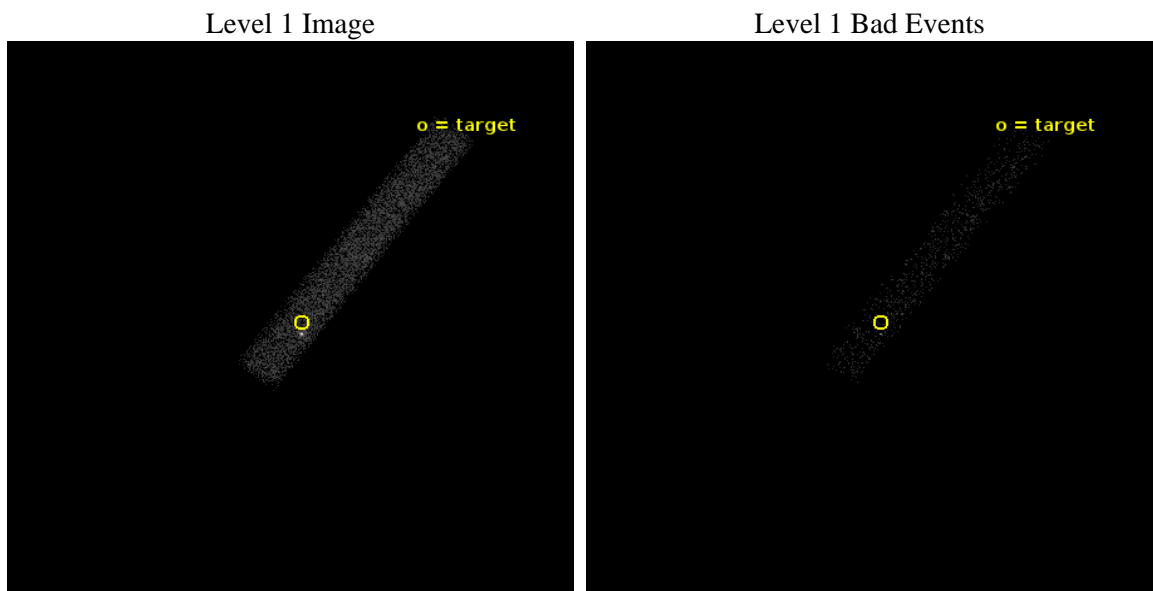
seq_num	200997	Sequence number
obs_id	16676	Observation id
title	Characterizing a New Variable Hard X-ray Source in the Planetary Nebula G343.3-0.6	Proposal title
observer	Dr. Mark Reynolds	Principal investigator
object	G343.3-0.6	Source name
dtcycle	0	&#160
cycle	P	events from which exps? Prim/Second/Both
ra_targ	255.366667	Observer's specified target RA [deg]
dec_targ	-43.098611	Observer's specified target Dec [deg]
ra_nom	255.37398841443	Nominal RA [deg]
dec_nom	-43.09986358839	Nominal Dec [deg]
roll_nom	307.79077672201	Nominal Roll [deg]
revision	2	Processing version of data
ontime	10070.24148345	Sum of GTIs [s]
livetime	9133.1774745601	Livetime [s]
ontime7	10070.24148345	Sum of GTIs [s]
l2events	7766	Number of level 2 events



## 2 OBI

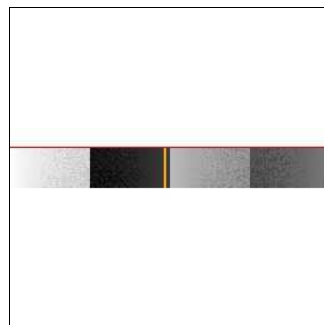
### 2.1 OBI

#### 2.1.1 Images



#### 2.1.2 Bias

Chip 7



### 2.1.3 Parameters

obi_num	0	Obi number	sched_exp_time	10000.000000	[s] Scheduled observation exposure time
ascdsver	10.4	Processing system revision	ontime	10070.24148345	Sum of GTIs [s]
caldsver	4.6.7	&#160	ontime7	10070.24148345	Sum of GTIs [s]
date	2015-07-07T19:40:26	Date and time of file creation	l1events	12832	Number of level 1 events
revision	2	Processing version of data			

### 2.1.4 Events

	<b>ccd 7</b>
level 1 events	12832
rejected events	4893
rejected %	38%

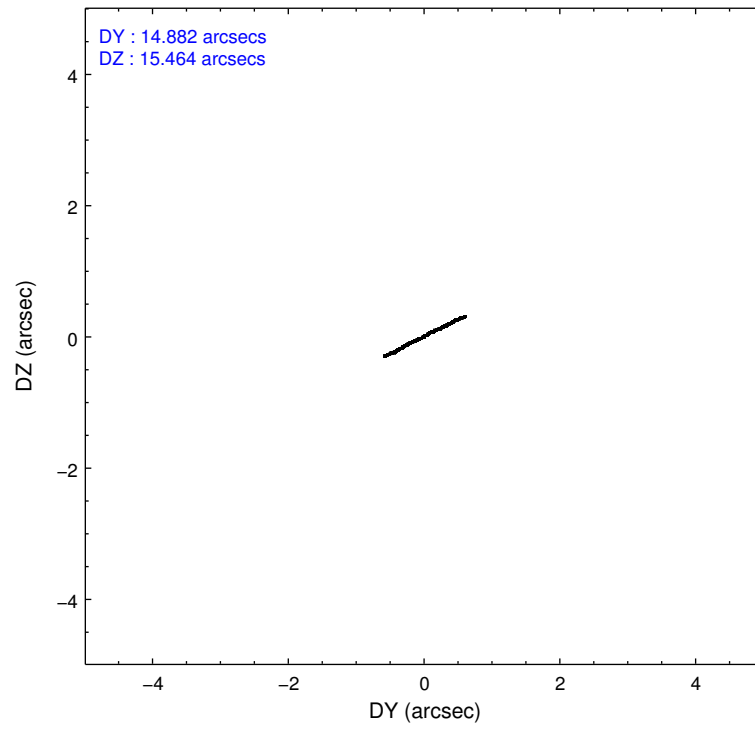
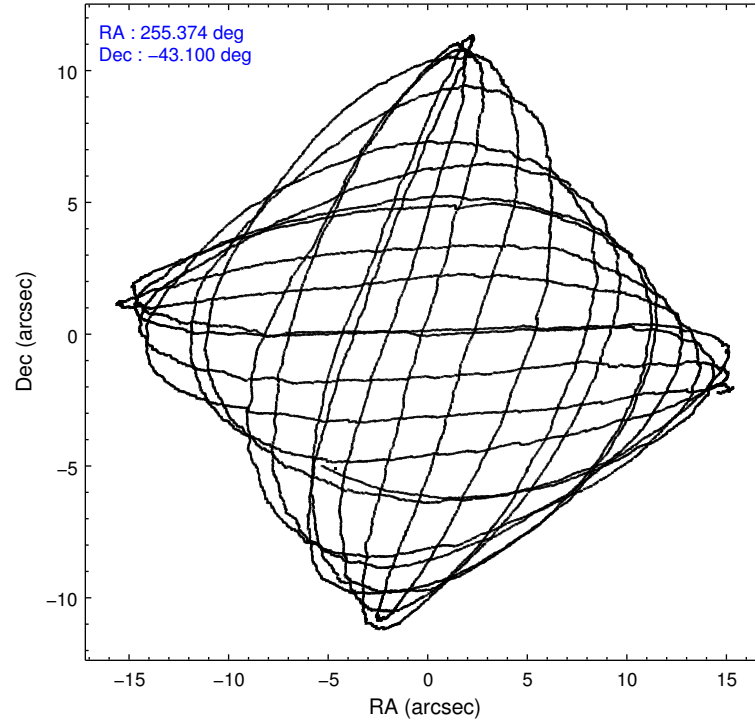
	<b>ccd 7</b>
grade 0 events	1157
	9%
grade 1 events	21
	0%
grade 2 events	1714
	13%
grade 3 events	973
	7%
grade 4 events	893
	6%
grade 5 events	980
	7%
grade 6 events	3202
	24%
grade 7 events	3892
	30%

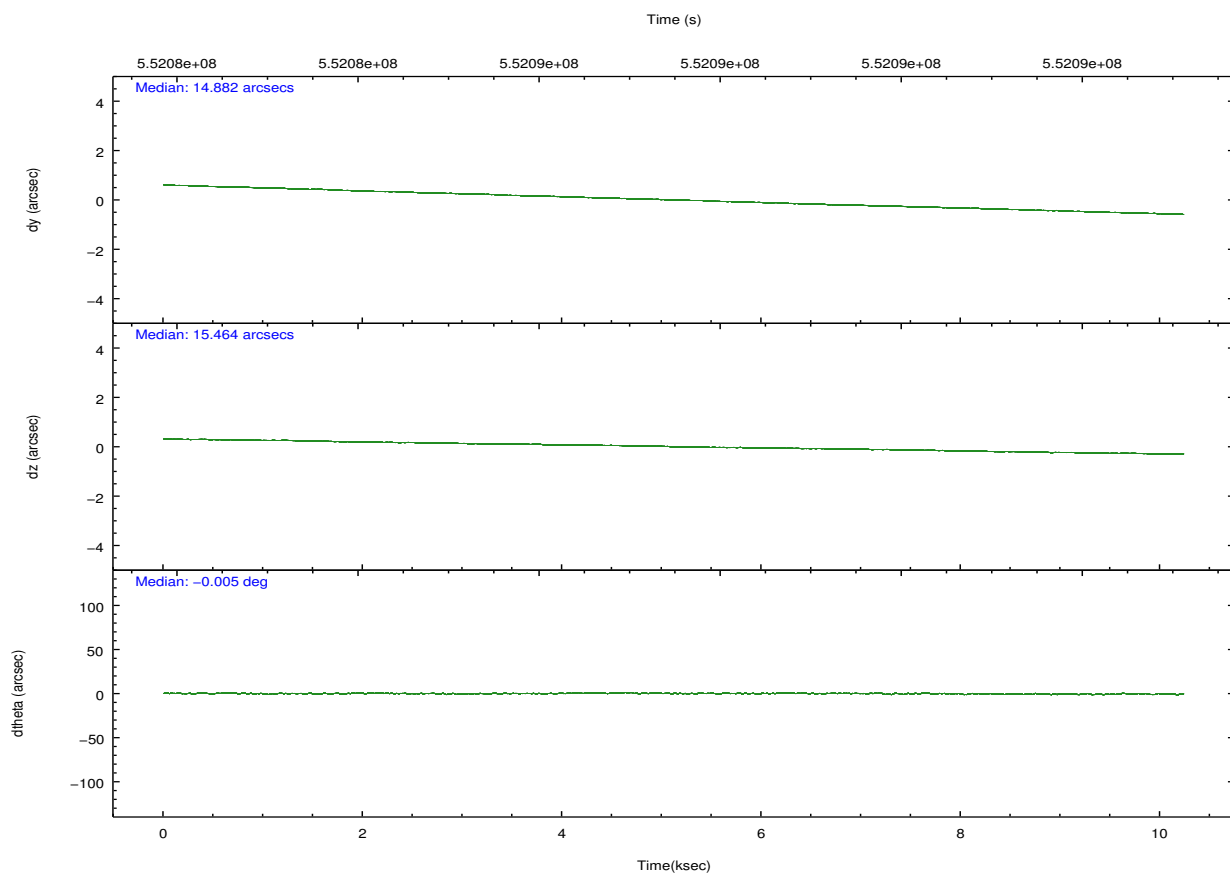
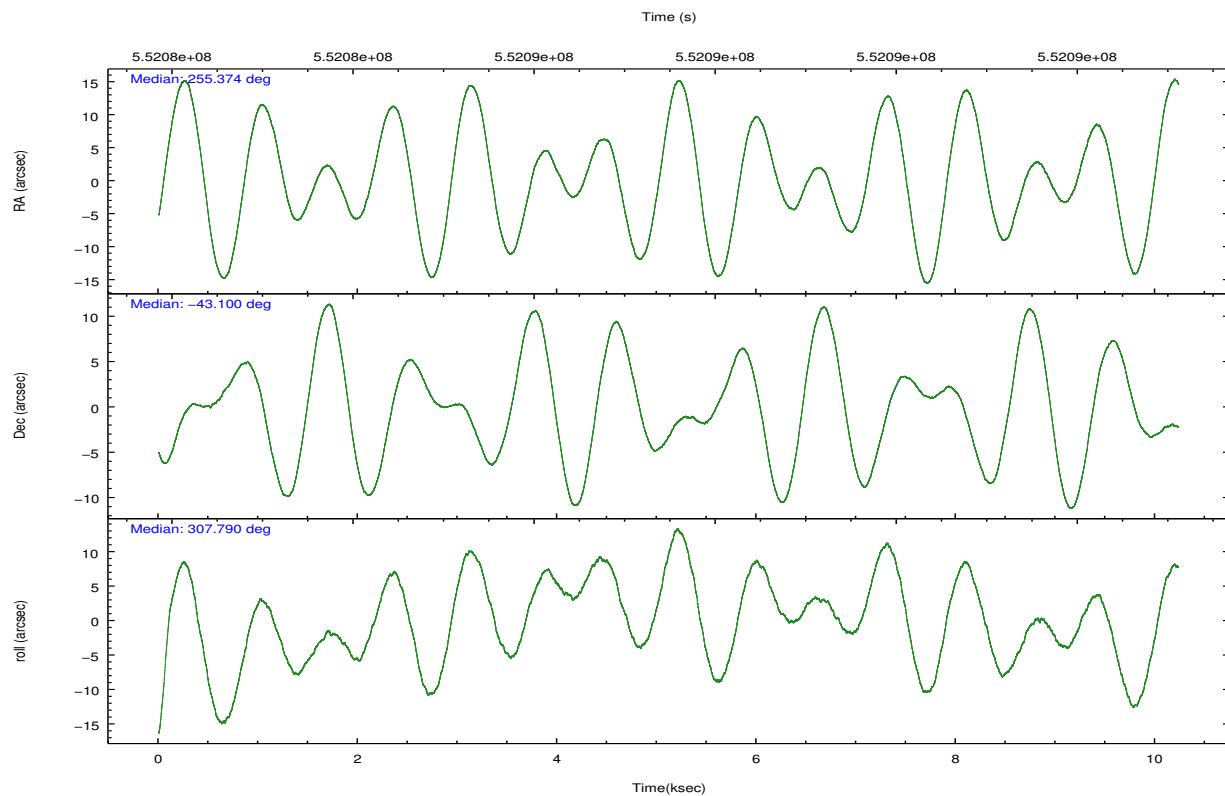


## 2.2 Compared Parameters

Parameter	Planned	Actual	Parameter	Planned	Actual
Instrument	ACIS	ACIS	Obspar format version number	7	7
Detector	ACIS-7	ACIS-7	Obspar file type	PREDICTED	ACTUAL
Grating	NONE	NONE	Obspar update status	NONE	UPDATED
Data mode	VFAINT	VFAINT	Number of optional ACIS chips dropped	0	0
Observation mode	POINTING	POINTING	On-chip summing requested	N	N
[deg] Pointing RA	255.338937	255.3739884144298	Subarray requested	CUSTOM	1/8
[deg] Pointing Dec	-43.089820	-43.09986358838952	Subarray start row	449	449
[deg] Pointing Roll	307.610199	307.7907767220123	Subarray row count	128	128
[mm] SIM focus pos	-0.684267	-0.6828225247311905	Alternating exposures requested	N	N
[mm] SIM defocus	0	0.001444936568705701	[s] Primary exposure time	0.000000	0.4
[mm] SIM translation stage pos	-190.132523	-190.1425803651734			
[mm] SIM translation stage offset	0	0.01005778216563158			
[s] Observation start time (MET)	552082610.184000	552082017.52687			
Observation start date	2015-06-30T20:15:43	2015-06-30T20:06:57			
[s] Observation end time (MET)	552092610.184000	552093439.61501			
Observation end date	2015-06-30T23:02:23	2015-06-30T23:17:19			
Read mode	TIMED	TIMED			

## 2.3 Aspect



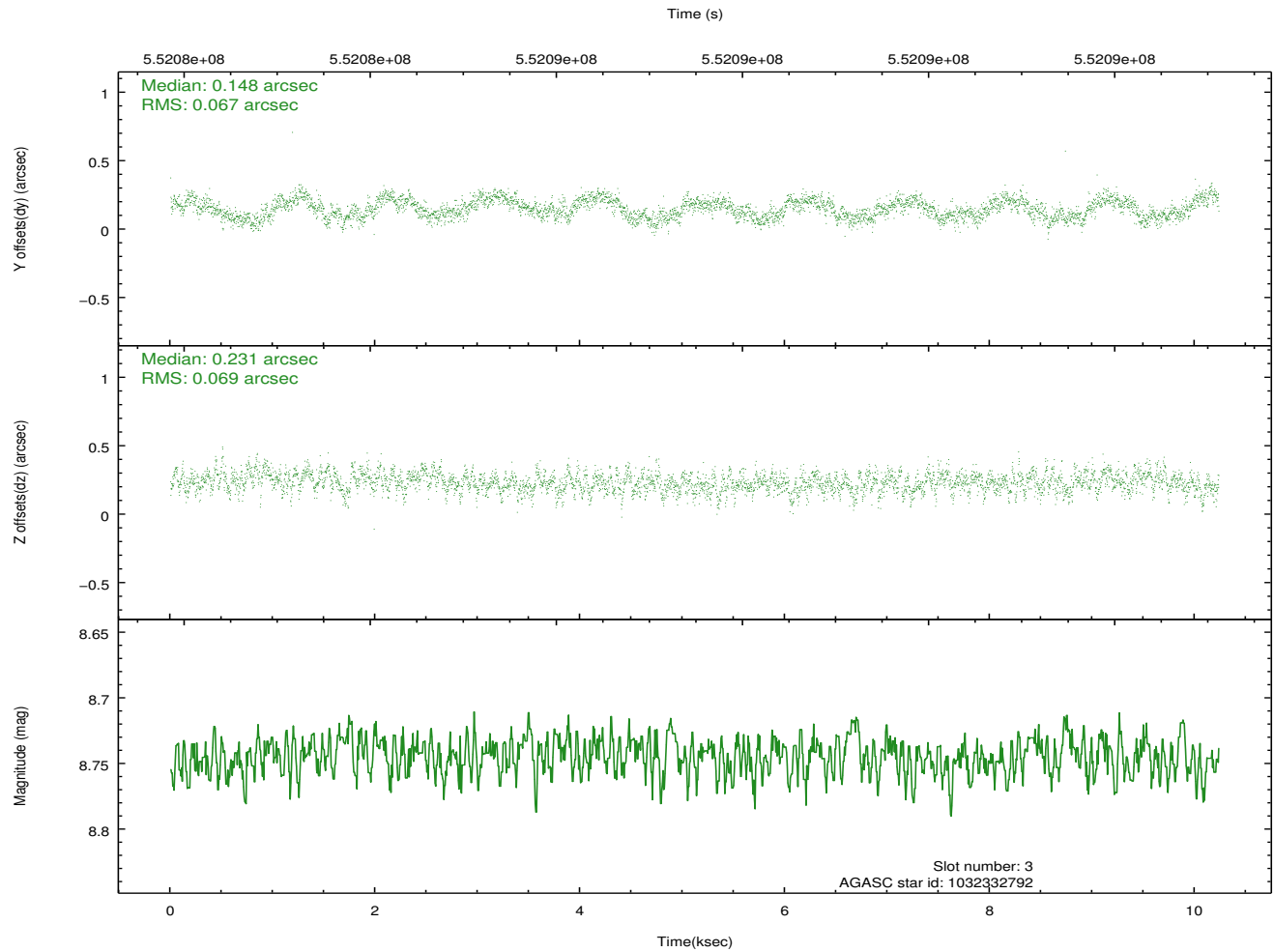
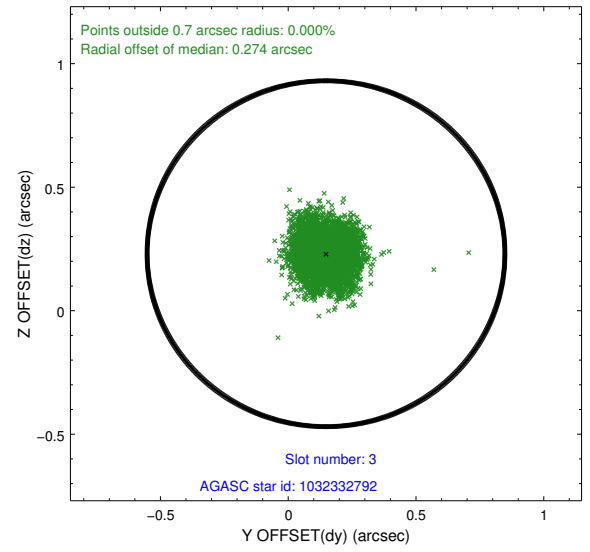
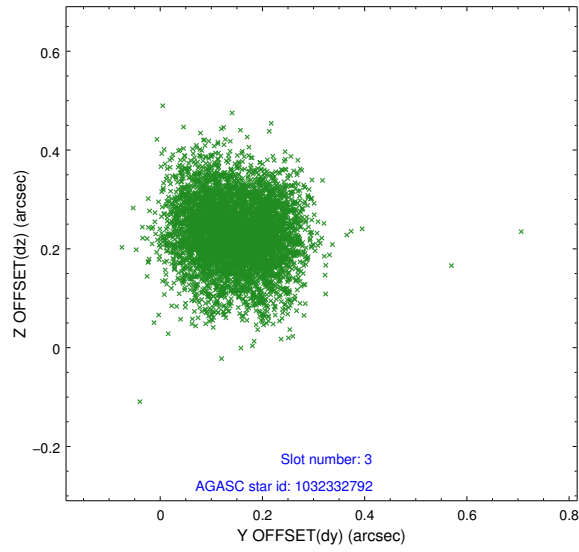


### Slot Statistics

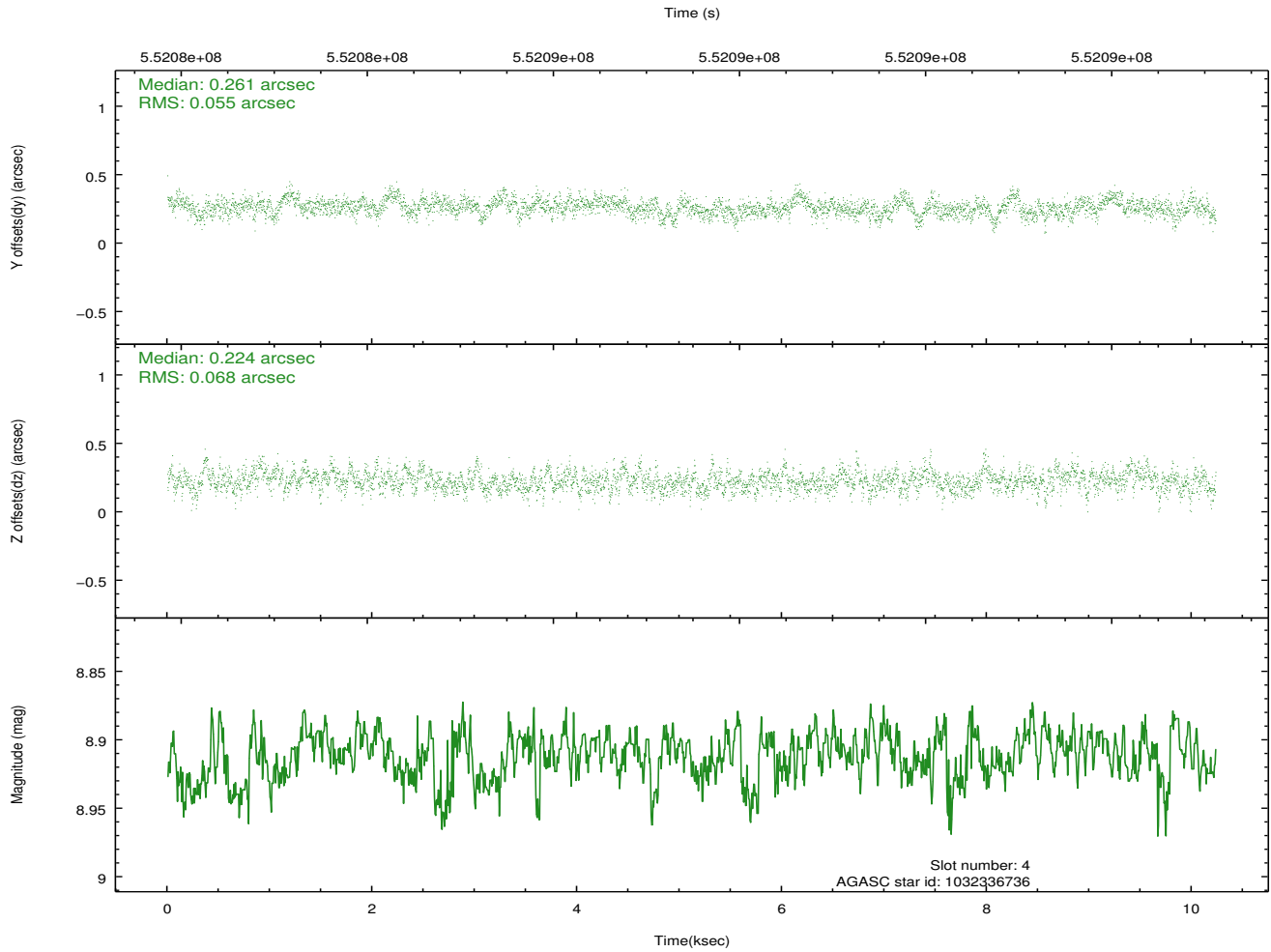
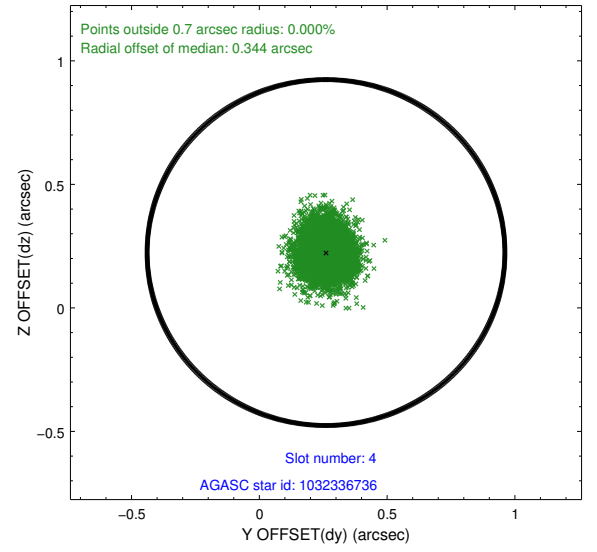
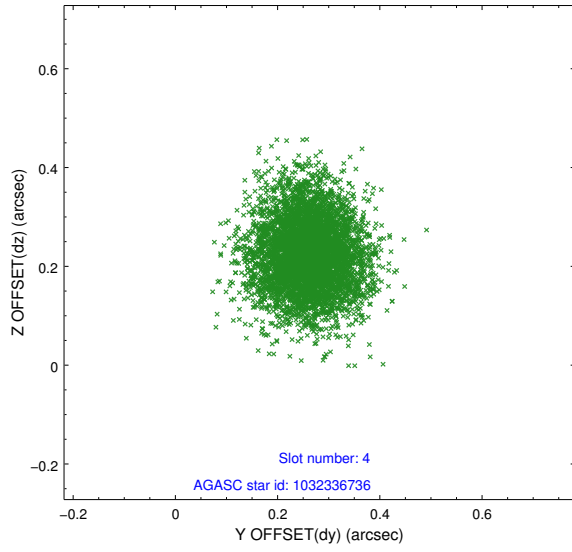
slot	status	used	id	mag	n_pts	med_dy	med_dz	dr1	dr2	ra	dec	mean_y	mean_z
0	FID		ACIS-S-2	7.06	2496	-0.136	-0.032	0.012	0.018	0.000000	0.000000	-767.96	-1736.85
1	FID		ACIS-S-4	7.14	2496	0.344	0.074	0.008	0.013	0.000000	0.000000	2145.53	171.24
2	FID		ACIS-S-5	7.17	2496	-0.243	-0.032	0.016	0.025	0.000000	0.000000	-1820.27	165.34
3	GUIDE	used	1032332792	8.74	4991	0.148	0.231	0.103	0.162	254.406503	-43.057153	-1578.87	-1880.13
4	GUIDE	used	1032336736	8.91	4992	0.261	0.224	0.093	0.151	254.770818	-42.975293	-1235.64	-937.14
5	GUIDE	used	1032454344	7.60	4993	-0.293	-0.283	0.085	0.133	256.002431	-42.969272	727.98	1644.64
6	GUIDE	used	1032869800	8.15	4993	0.074	0.081	0.104	0.157	254.843214	-43.311164	-157.64	-1517.21
7	GUIDE	used	1032982224	7.50	4992	-0.194	-0.254	0.083	0.139	256.128626	-43.309766	1900.19	1148.98

## 2.4 Star Slots

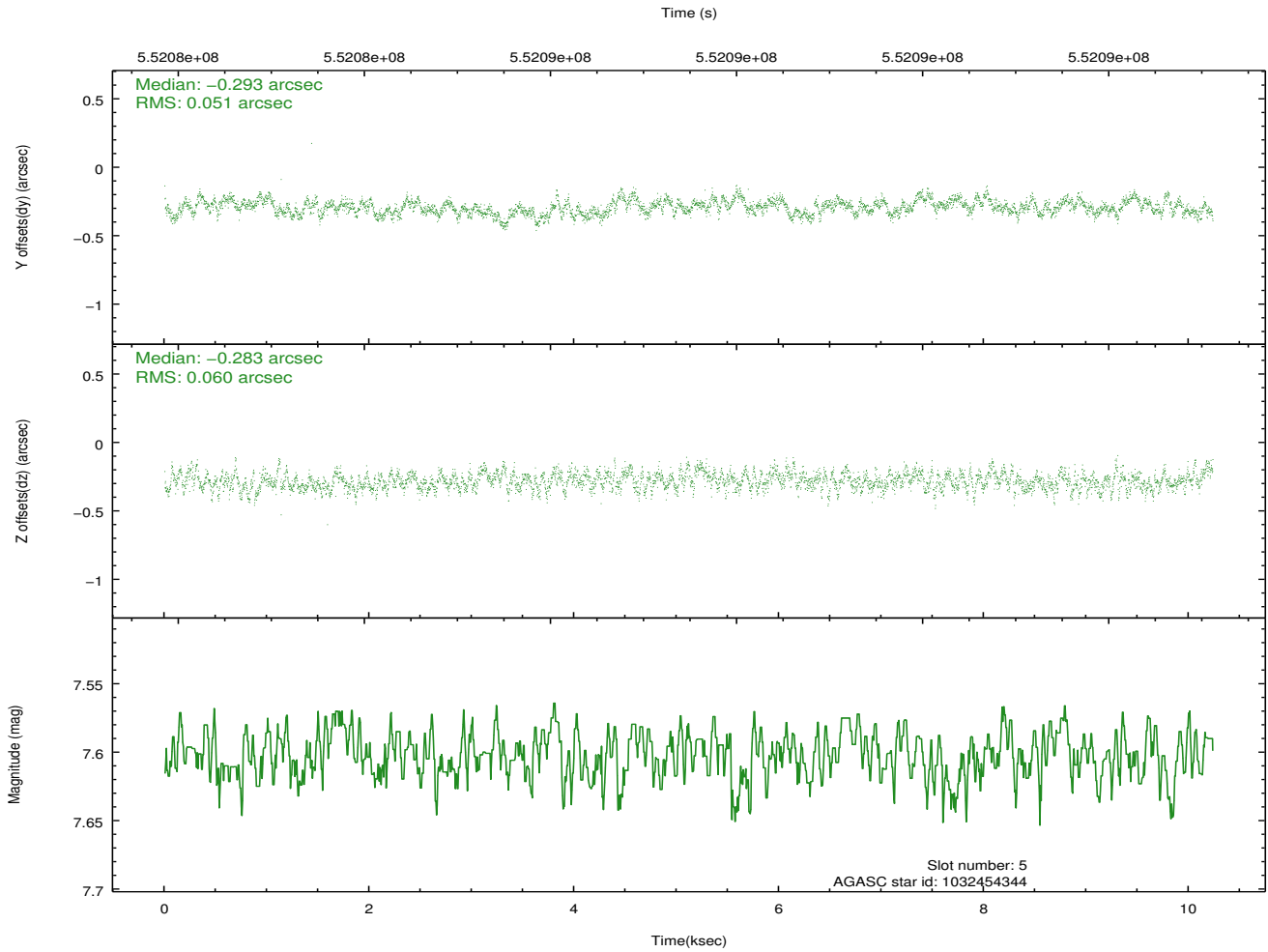
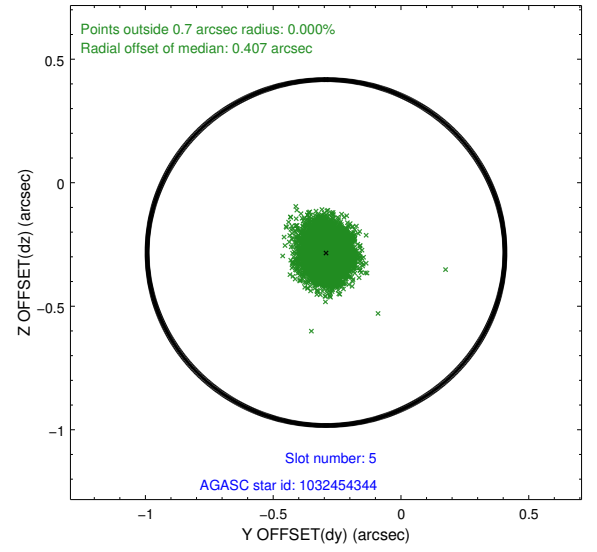
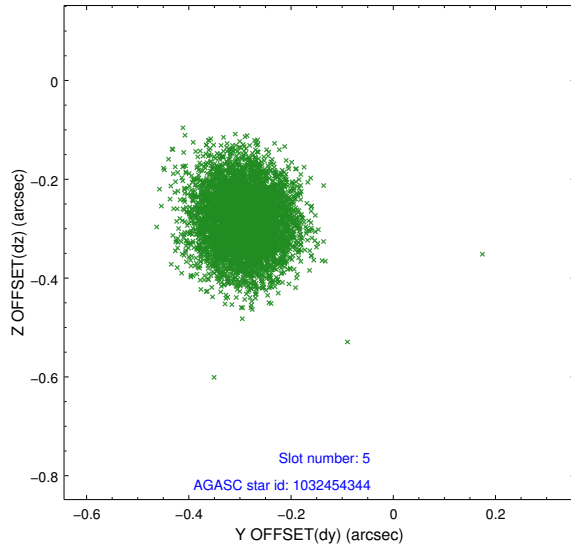
### 2.4.1 Slot 3



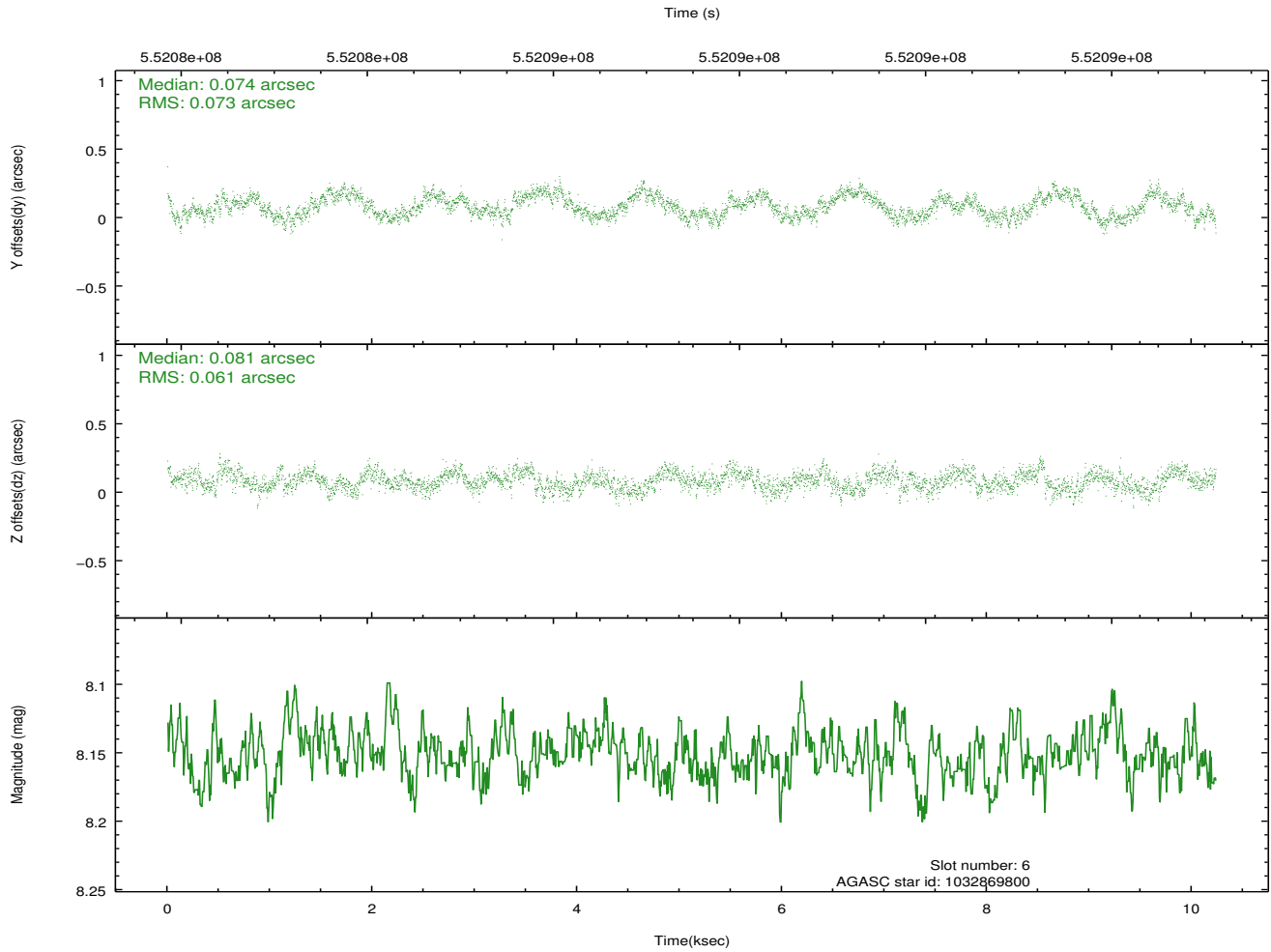
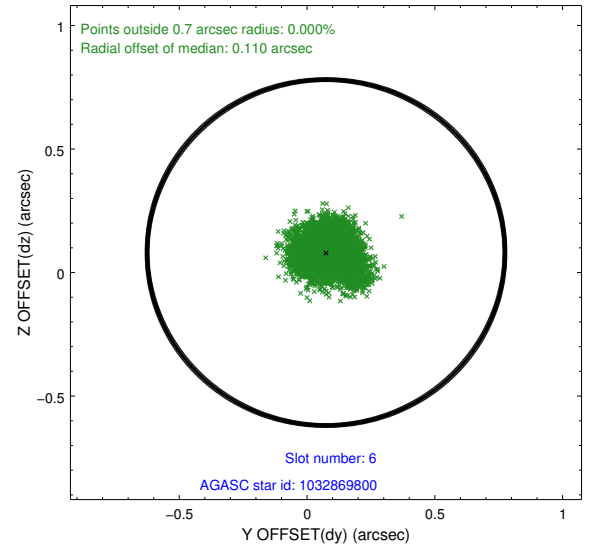
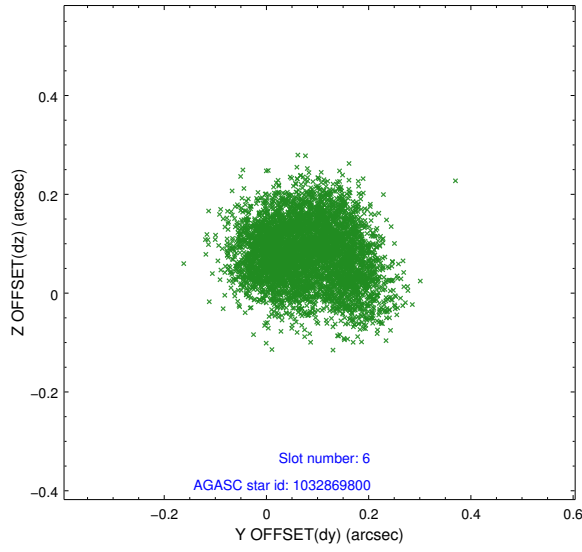
## 2.4.2 Slot 4



### 2.4.3 Slot 5

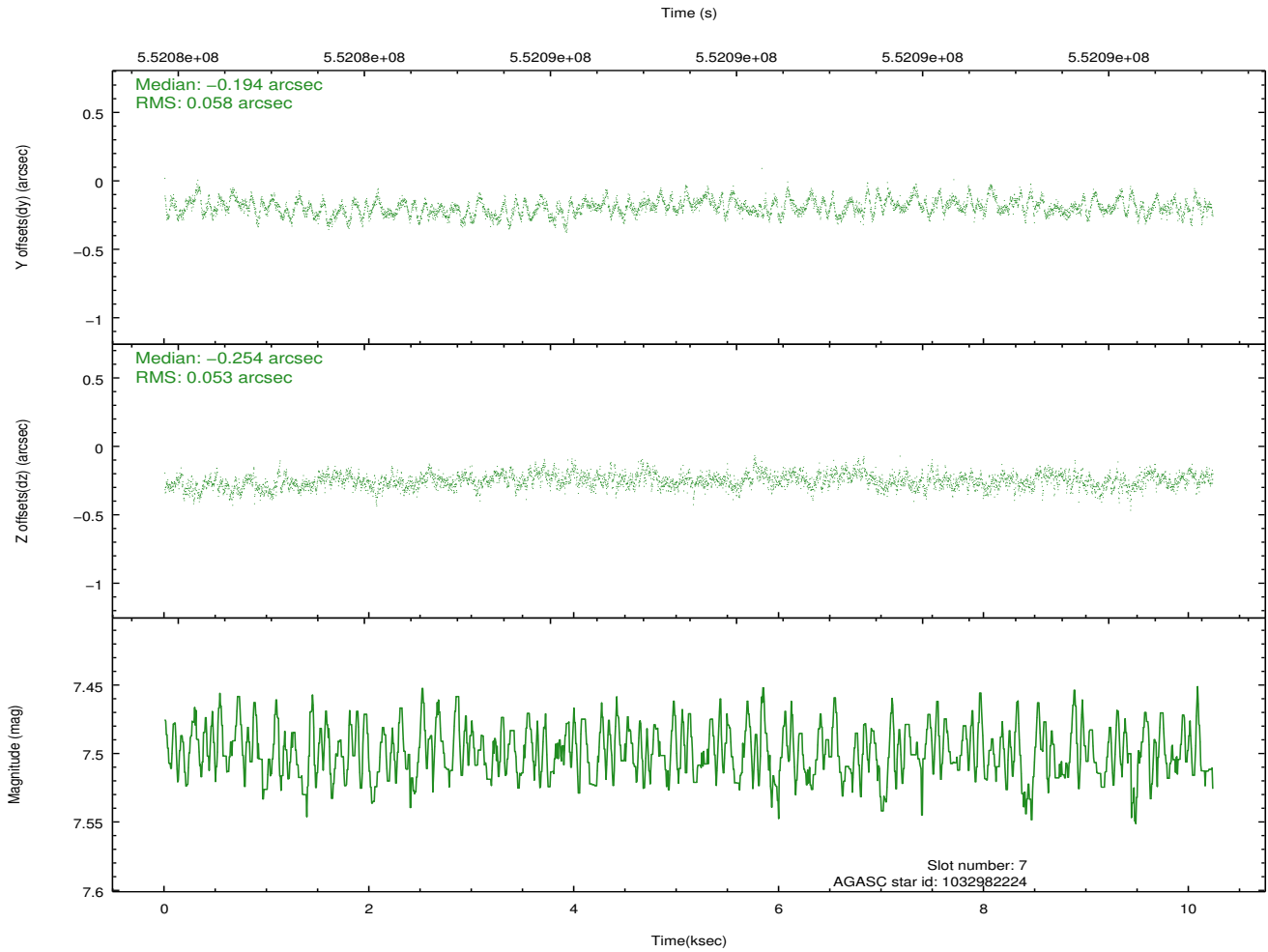
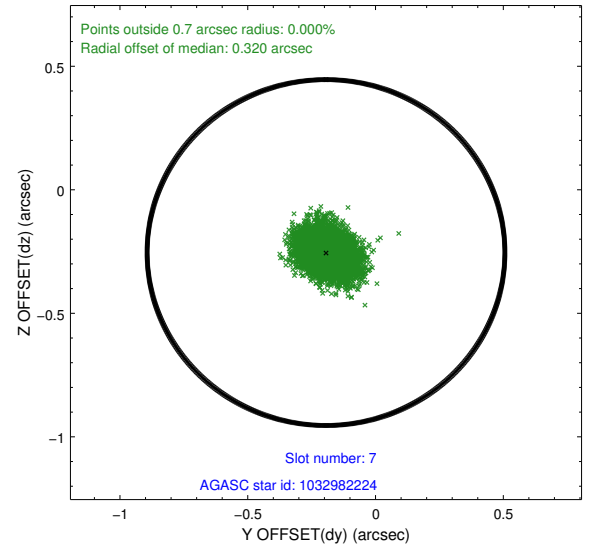
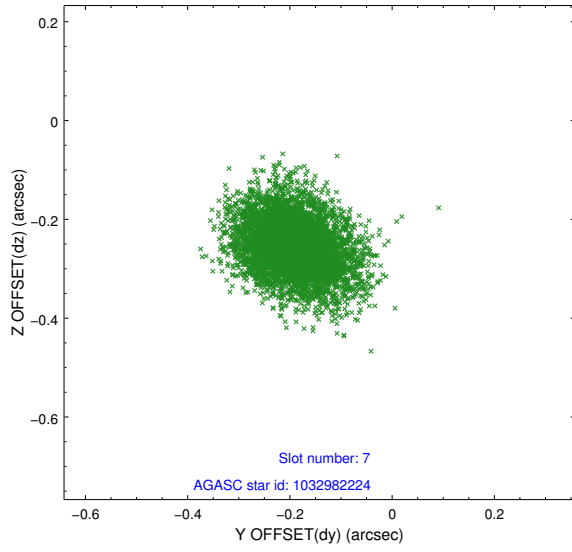


## 2.4.4 Slot 6



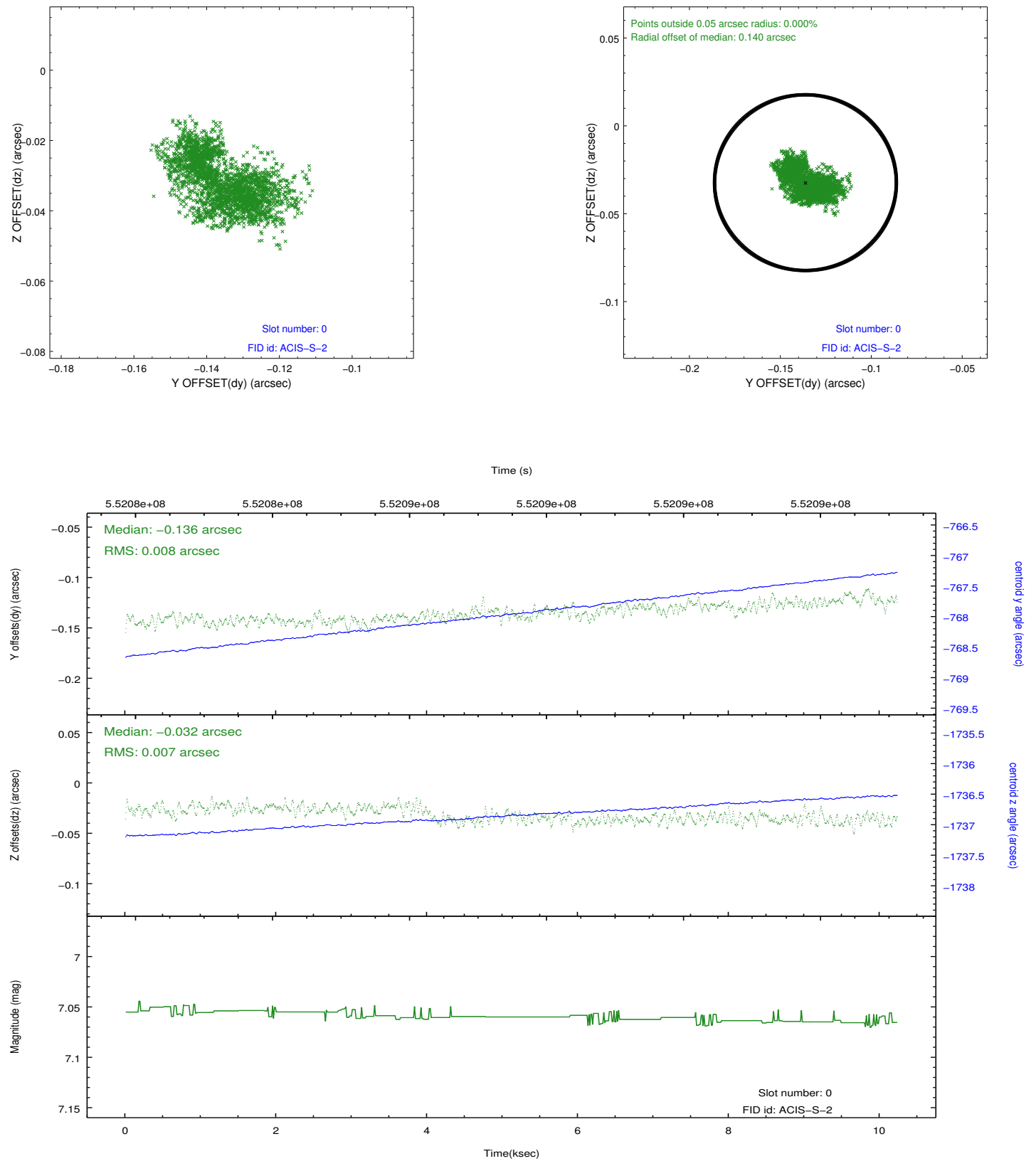


## 2.4.5 Slot 7

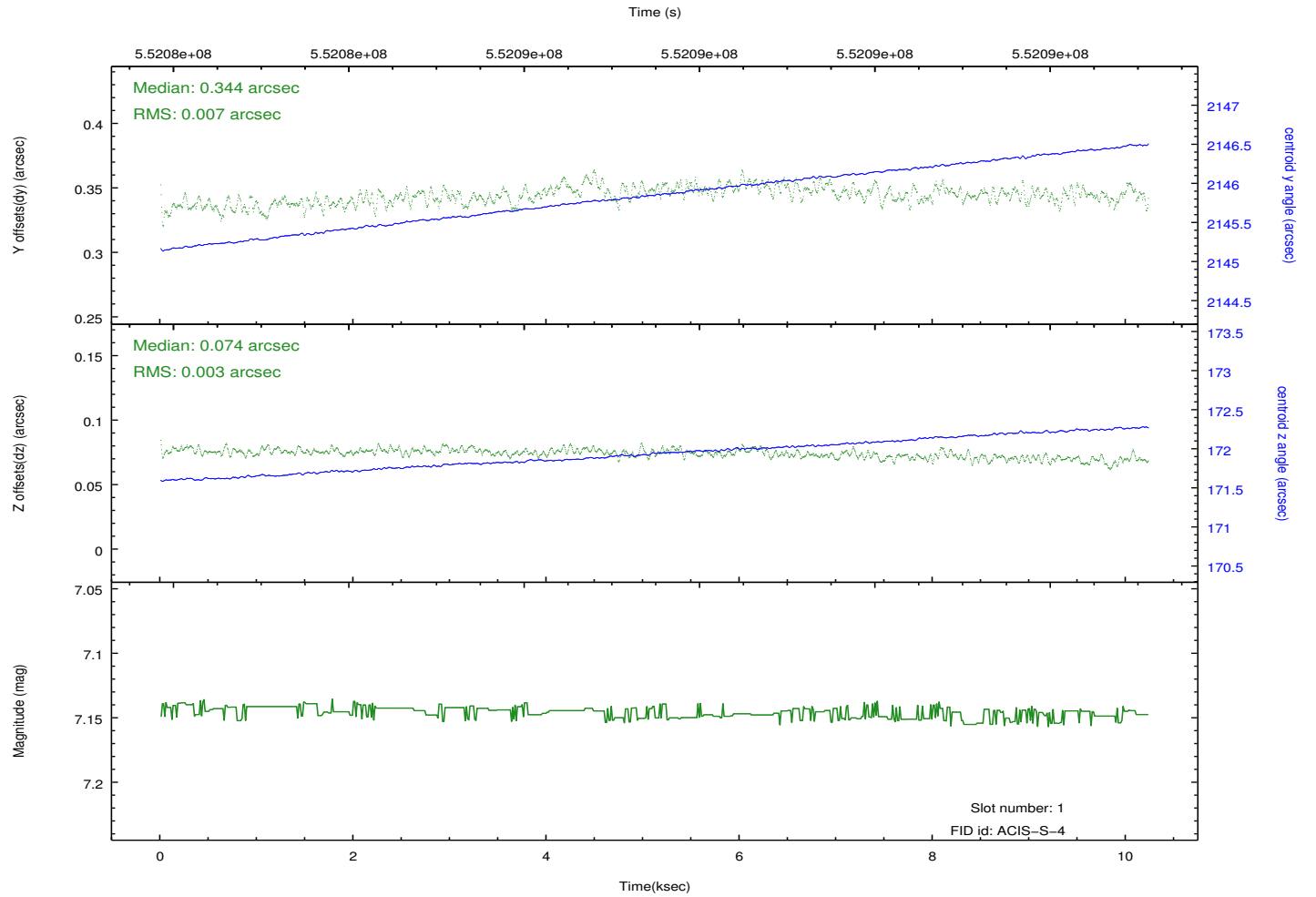
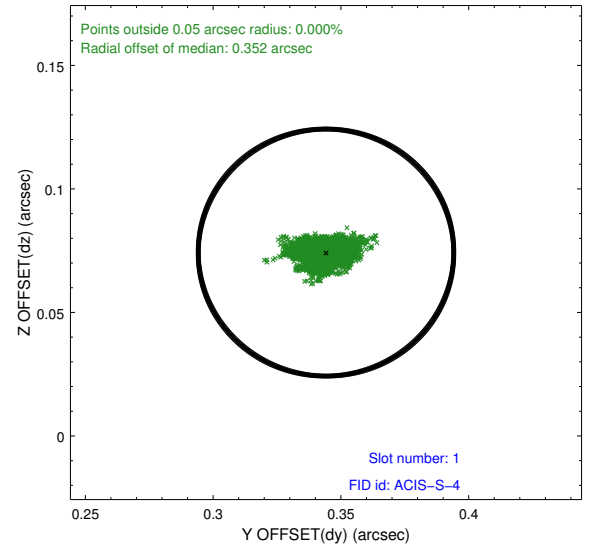
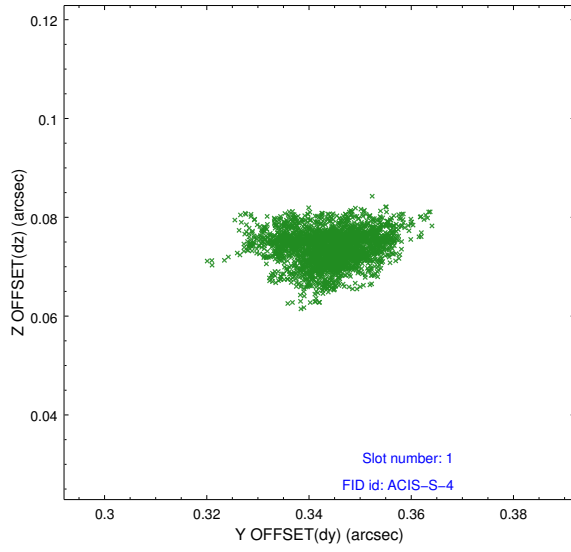


## 2.5 FID Slots

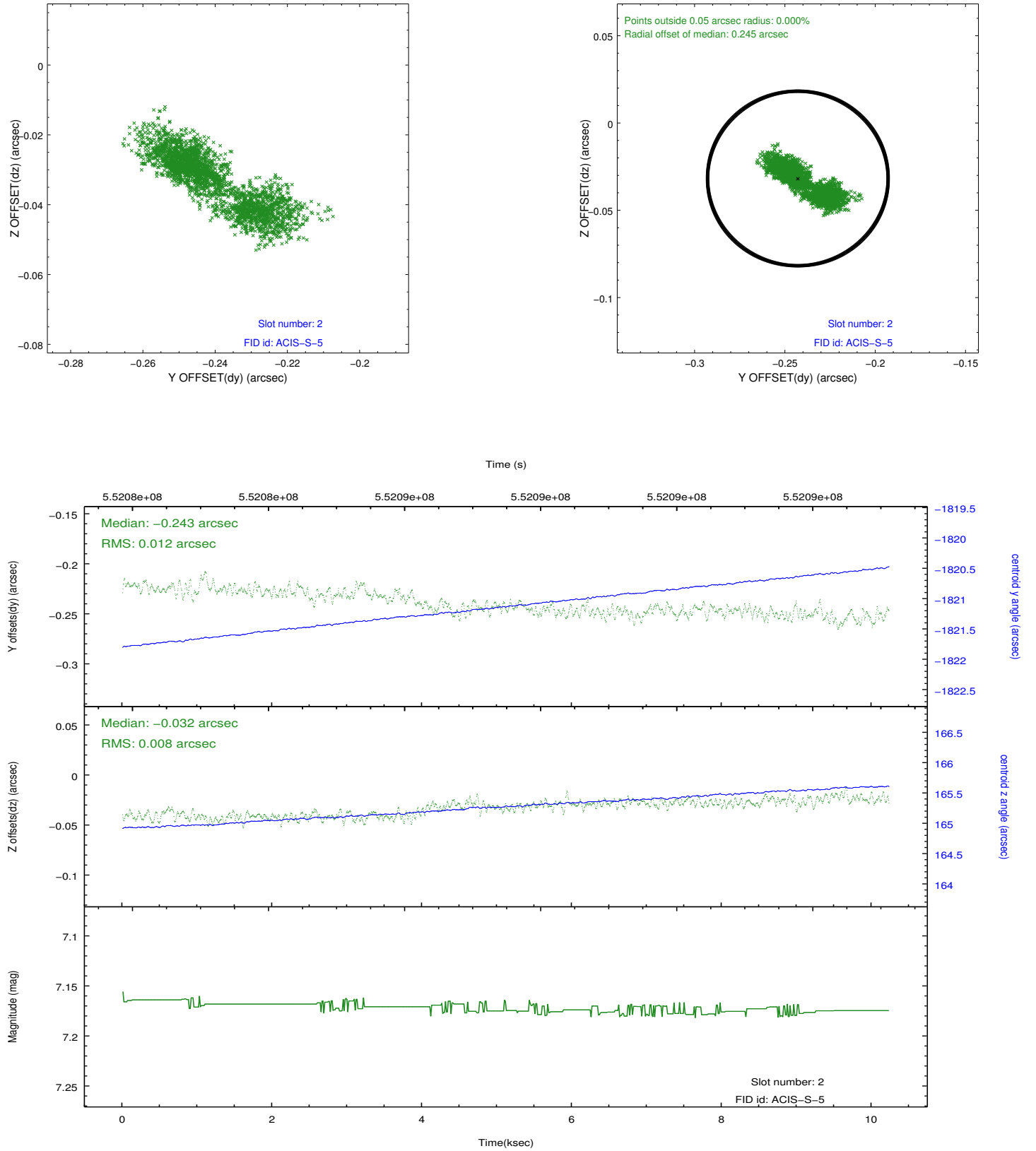
### 2.5.1 Slot 0



## 2.5.2 Slot 1



### 2.5.3 Slot 2



## A Summary

### A.1 Status

V&V Scientist	Jen Lauer
V&V Date (YYYY-MM-DD)	2015.07.10
V&V Edition	1
V&V Disposition and Status	OK
V&V Charge Time	10.07024148345

### A.2 Comments

There is a bright source approximately 18 arcsec south of target position. This is not the named source, but may be associated with the extended structure.

=====

Reprocessed to correct target name to G343.3-0.6