

V&V Reference Report

L2 ASCDS Version : 10.4.2.1

Observation 18720 - L2 Version 1
Chandra X-Ray Center

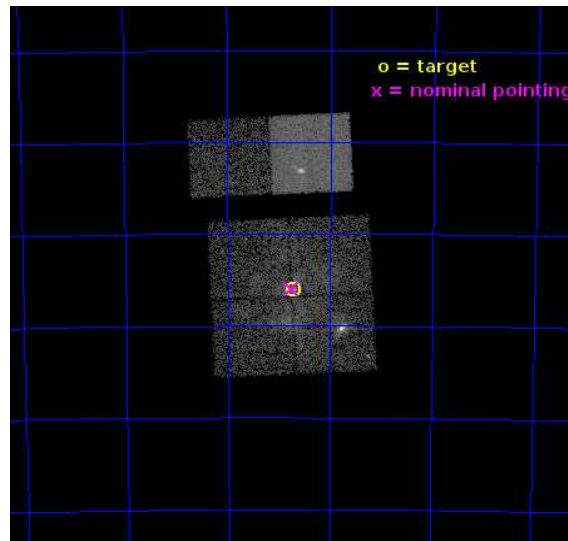
L2 Processing Date : Dec 2 2015

Contents

1	Front	2
2	OBI	3
2.1	OBI	3
2.1.1	Images	3
2.1.2	Bias	3
2.1.3	Parameters	4
2.1.4	Events	4
2.2	Compared Parameters	5
2.3	Aspect	6
2.4	Star Slots	9
2.4.1	Slot 3	9
2.4.2	Slot 4	10
2.4.3	Slot 5	11
2.4.4	Slot 6	12
2.4.5	Slot 7	13
2.5	FID Slots	14
2.5.1	Slot 0	14
2.5.2	Slot 1	15
2.5.3	Slot 2	16
A	Summary	17
A.1	Status	17
A.2	Comments	17

1 Front

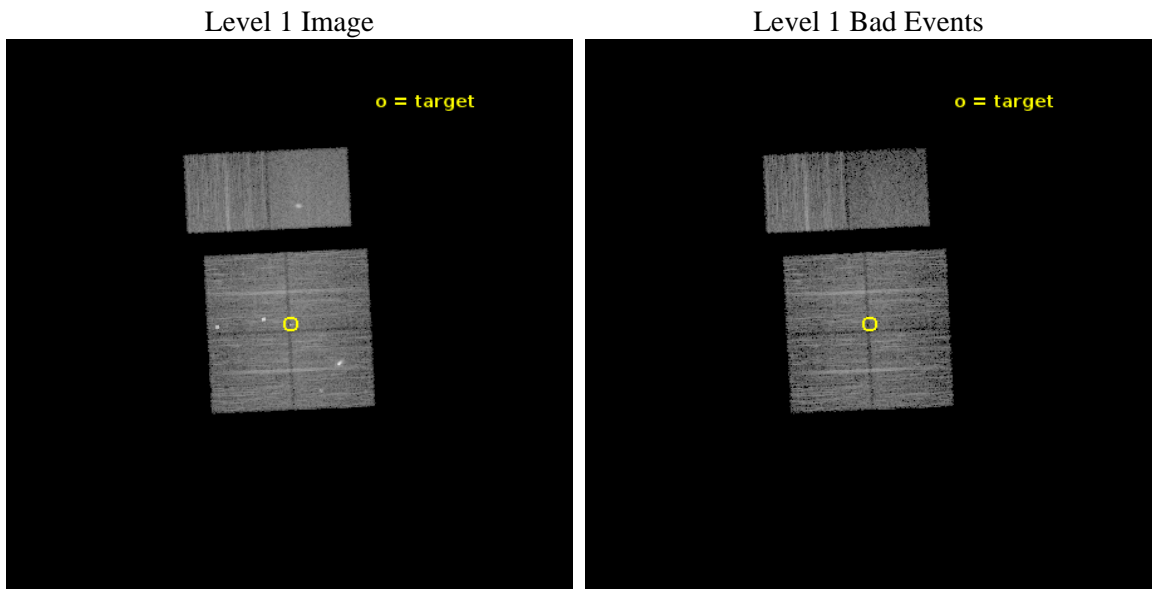
seq_num	901116	Sequence number
obs_id	18720	Observation id
title	The Tarantula -- Revealed by X-rays (T-ReX): A Definitive Chandra Investigation of 30 Doradus	Proposal title
observer	Dr. Leisa Townsley	Principal investigator
object	30 Doradus	Source name
dtcycle	0	
cycle	P	events from which exps? Prim/Second/Both
ra_targ	84.676667	Observer's specified target RA [deg]
dec_targ	-69.100806	Observer's specified target Dec [deg]
ra_nom	84.688756255294	Nominal RA [deg]
dec_nom	-69.099458682321	Nominal Dec [deg]
roll_nom	357.21997328984	Nominal Roll [deg]
revision	1	Processing version of data
ontime	9958.1866781712	Sum of GTIs [s]
livetime	9832.090122352	Livetime [s]
ontime0	9958.0635582209	Sum of GTIs [s]
ontime1	9958.1045981646	Sum of GTIs [s]
ontime2	9958.1456382275	Sum of GTIs [s]
ontime3	9958.1866781712	Sum of GTIs [s]
ontime6	9958.2687581778	Sum of GTIs [s]
ontime7	9958.2277182341	Sum of GTIs [s]
l2events	67998	Number of level 2 events



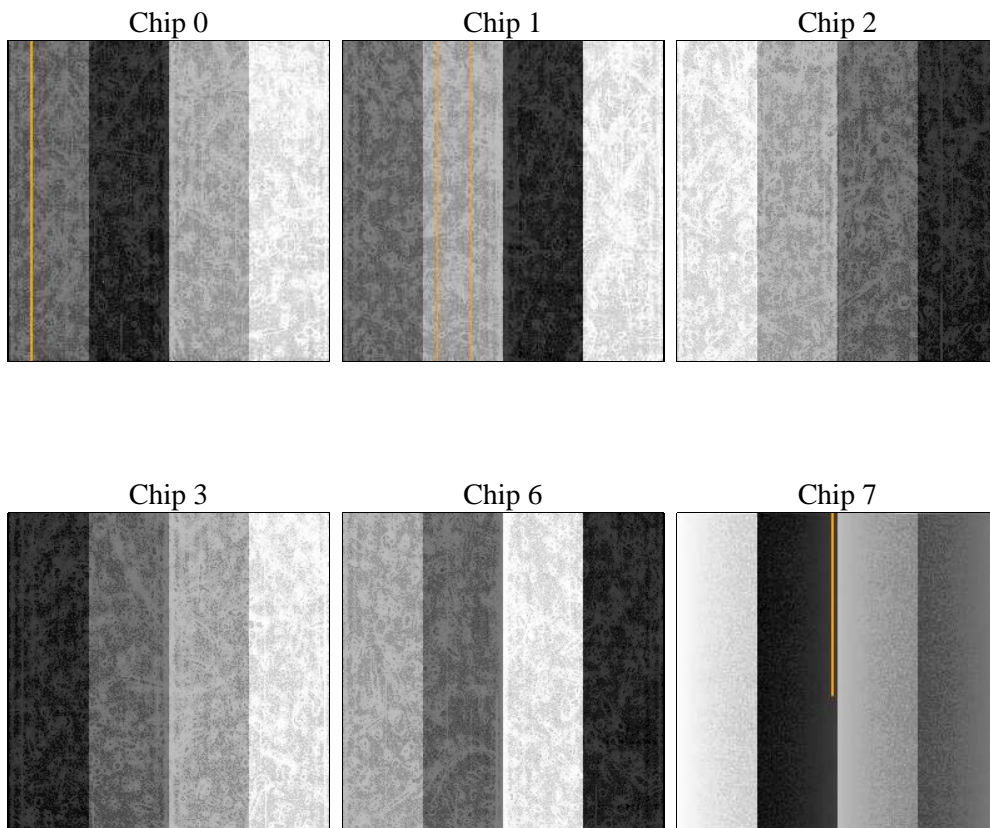
2 OBI

2.1 OBI

2.1.1 Images



2.1.2 Bias



2.1.3 Parameters

obi_num	0	Obi number	sched_exp_time	10000.000000	[s] Scheduled observation exposure time
ascdsver	10.4.2.1	Processing system revision	ontime	9958.1866781712	Sum of GTIs [s]
caldsver	4.6.10a	 	ontime0	9958.0635582209	Sum of GTIs [s]
date	2015-12-02T23:51:41	Date and time of file creation	ontime1	9958.1045981646	Sum of GTIs [s]
revision	1	Processing version of data	ontime2	9958.1456382275	Sum of GTIs [s]
			ontime3	9958.1866781712	Sum of GTIs [s]
			ontime6	9958.2687581778	Sum of GTIs [s]
			ontime7	9958.2277182341	Sum of GTIs [s]
			l1events	345078	Number of level 1 events

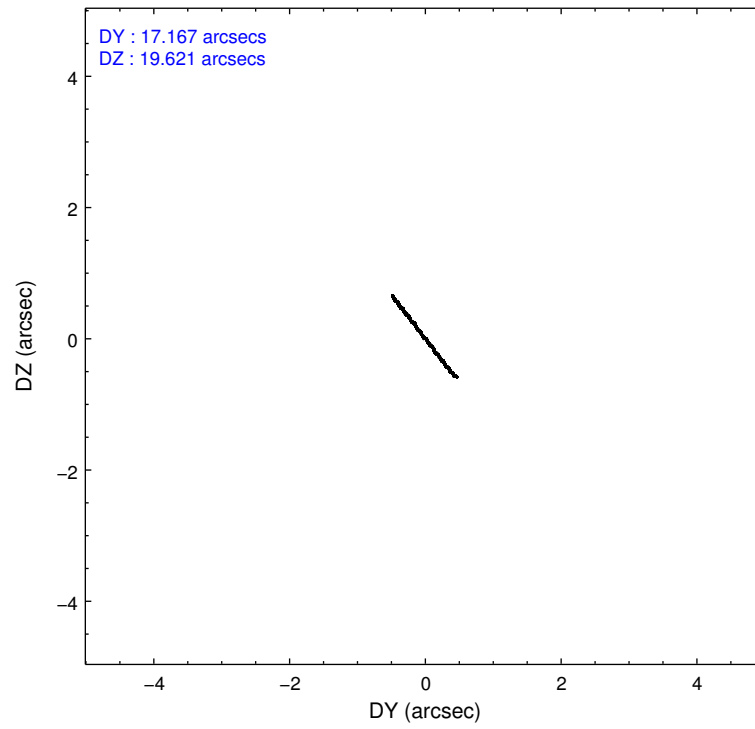
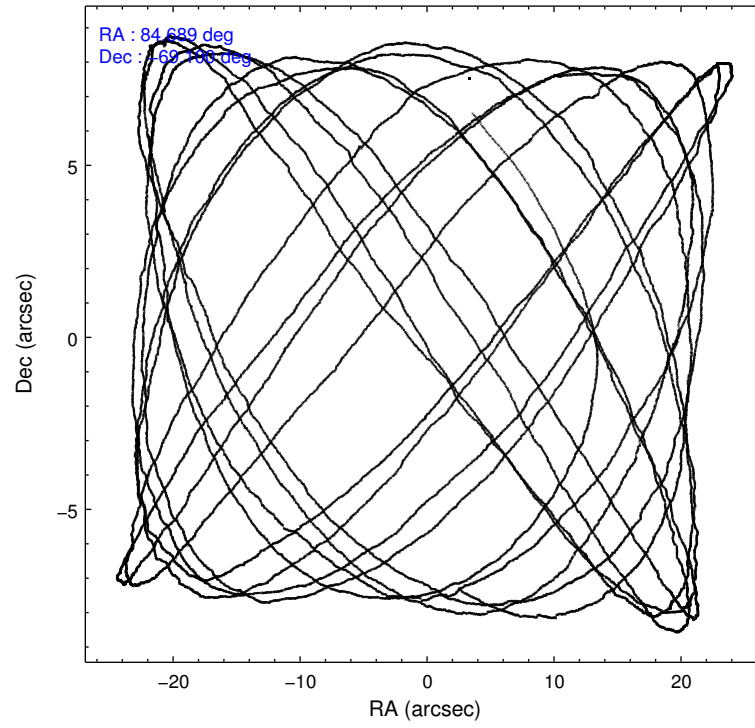
2.1.4 Events

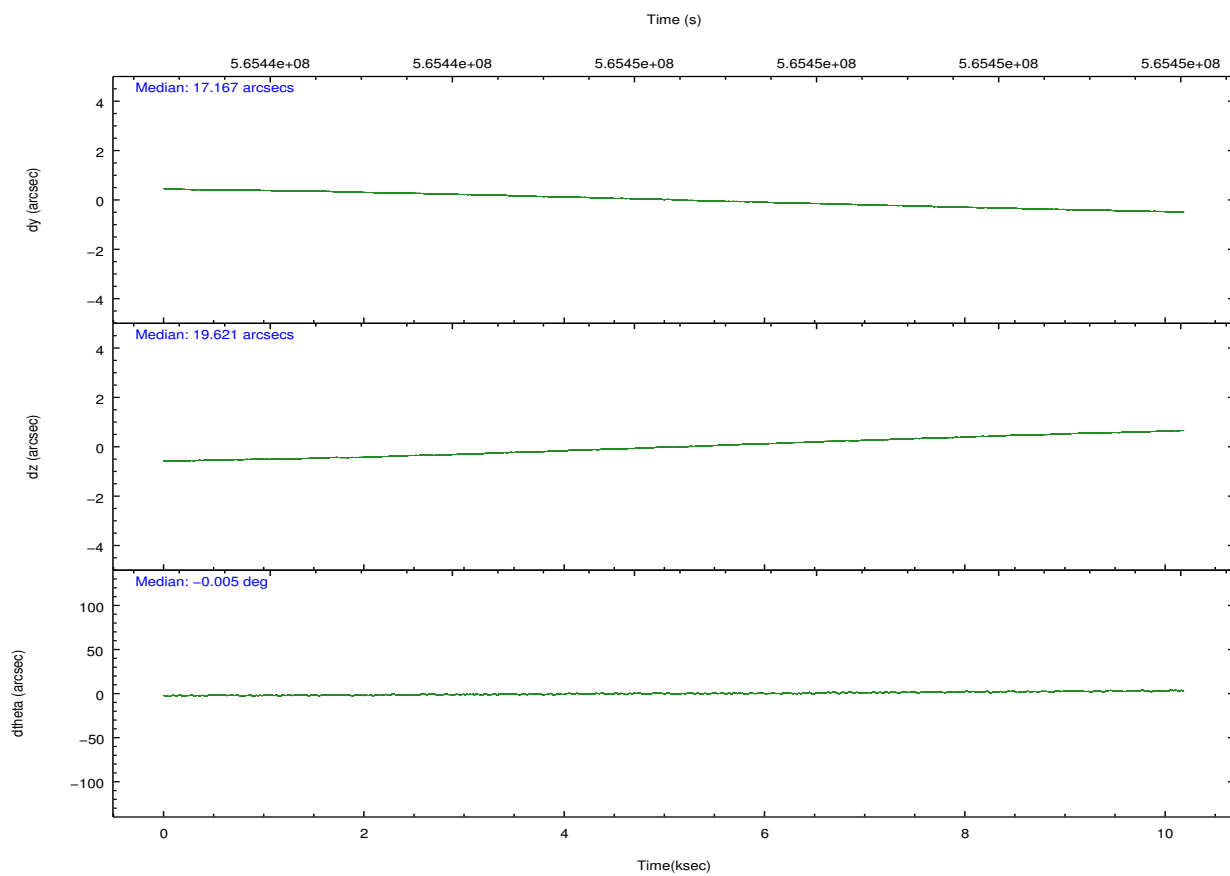
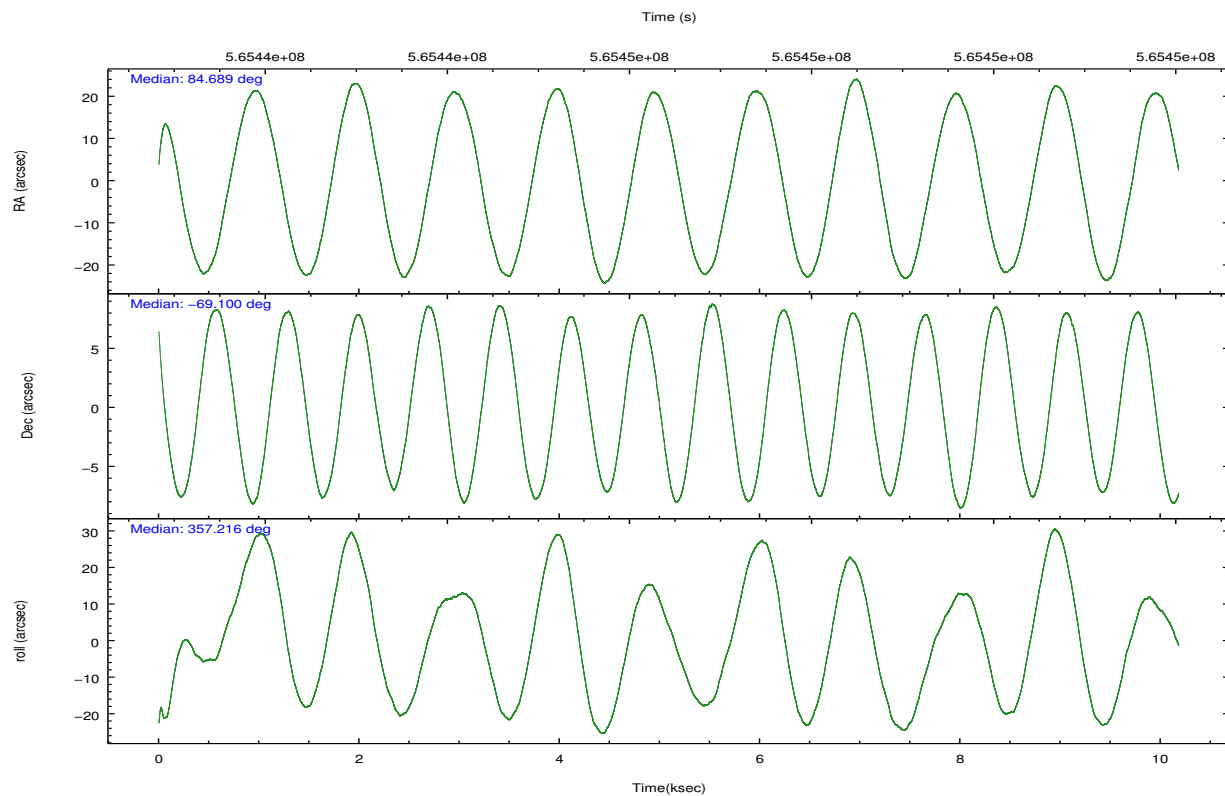
	ccd 0	ccd 1	ccd 2	ccd 3	ccd 6	ccd 7		ccd 0	ccd 1	ccd 2	ccd 3	ccd 6	ccd 7
level 1 events	52110	57854	63077	54124	55562	62351	grade 0 events	3747	8862	5541	4952	2180	3190
rejected events	44403	43482	50516	45285	49328	32556		7%	15%	8%	9%	3%	5%
rejected %	85%	75%	80%	83%	88%	52%	grade 1 events	35	61	42	59	20	86
								0%	0%	0%	0%	0%	0%
							grade 2 events	1602	2318	4732	1460	1506	6628
								3%	4%	7%	2%	2%	10%
							grade 3 events	621	887	577	625	559	2366
								1%	1%	0%	1%	1%	3%
							grade 4 events	598	854	632	700	539	2400
								1%	1%	1%	1%	0%	3%
							grade 5 events	1851	2129	1772	2354	2274	6204
								3%	3%	2%	4%	4%	9%
							grade 6 events	1145	1463	1082	1103	1457	15222
								2%	2%	1%	2%	2%	24%
							grade 7 events	42511	41280	48699	42871	47027	26255
								81%	71%	77%	79%	84%	42%

2.2 Compared Parameters

Parameter	Planned	Actual	Parameter	Planned	Actual
Instrument	ACIS	ACIS	Obspar format version number	7	7
Detector	ACIS-012367	ACIS-012367	Obspar file type	PREDICTED	ACTUAL
Grating	NONE	NONE	Obspar update status	NONE	UPDATED
Data mode	VFAINT	VFAINT	CCD I0 on	Y	Y
Observation mode	POINTING	POINTING	CCD I1 on	Y	Y
[deg] Pointing RA	84.619981	84.68875625529355	CCD I2 on	Y	Y
[deg] Pointing Dec	-69.112120	-69.09945868232063	CCD I3 on	Y	Y
[deg] Pointing Roll	356.947045	357.2199732898355	CCD S0 on	N	N
[mm] SIM focus pos	-0.782348	-0.7809083437167272	CCD S1 on	N	N
[mm] SIM defocus	0	0.001439871863259334	CCD S2 on	O1	Y
[mm] SIM translation stage pos	-233.592463	-233.5874344608287	CCD S3 on	O2	Y
[mm] SIM translation stage offset	0	-0.005018542100998502	CCD S4 on	N	N
[s] Observation start time (MET)	565441529.184000	565440542.20759	CCD S5 on	N	N
Observation start date	2015-12-02T11:04:21	2015-12-02T10:49:02	Number of optional ACIS chips dropped	0	0
[s] Observation end time (MET)	565451529.184000	565452650.02077	On-chip summing requested	N	N
Observation end date	2015-12-02T13:51:01	2015-12-02T14:10:50	Subarray requested	NONE	NONE
Read mode	TIMED	TIMED	Alternating exposures requested	N	N
			[s] Primary exposure time	0.000000	3.2

2.3 Aspect



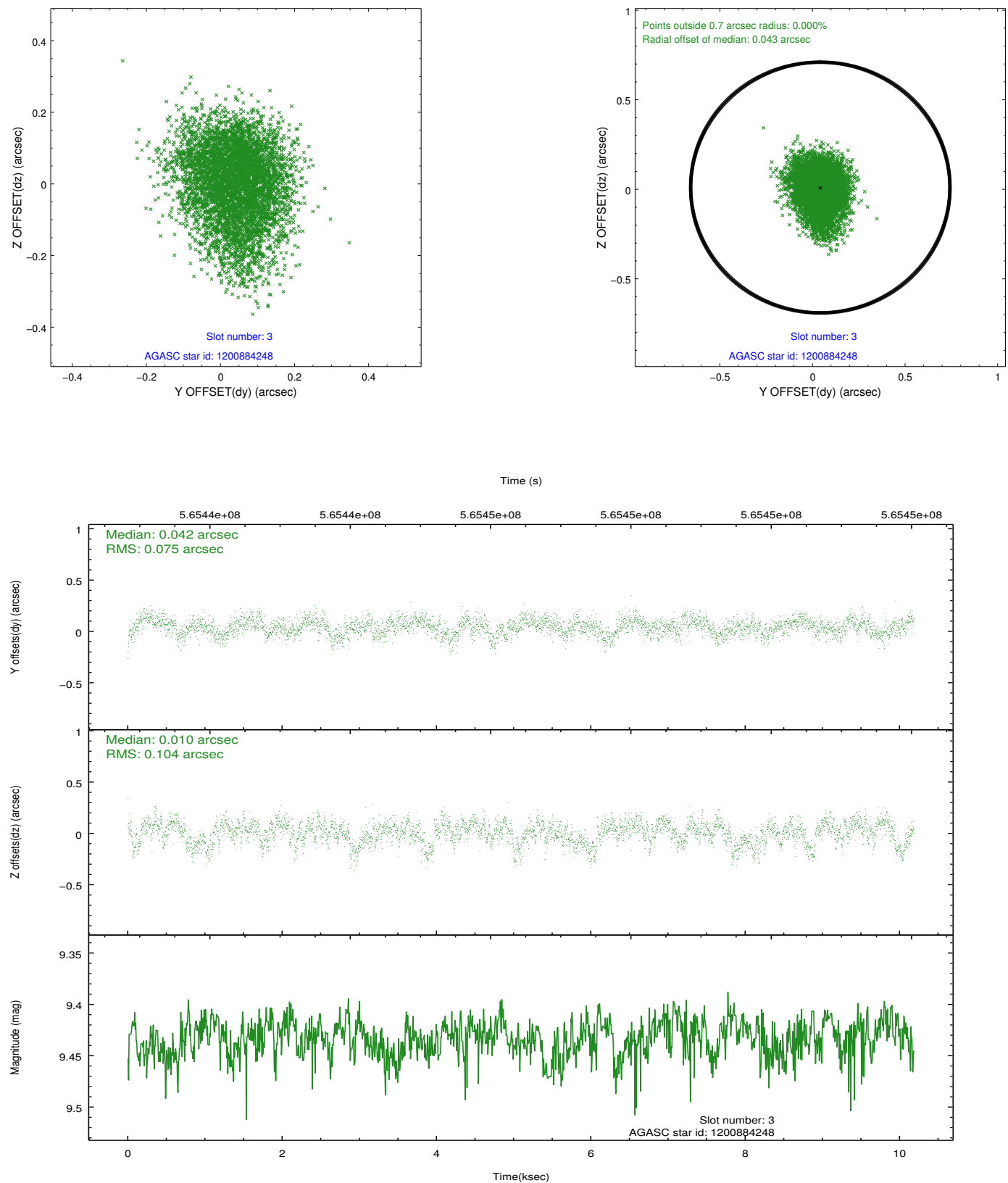


Slot Statistics

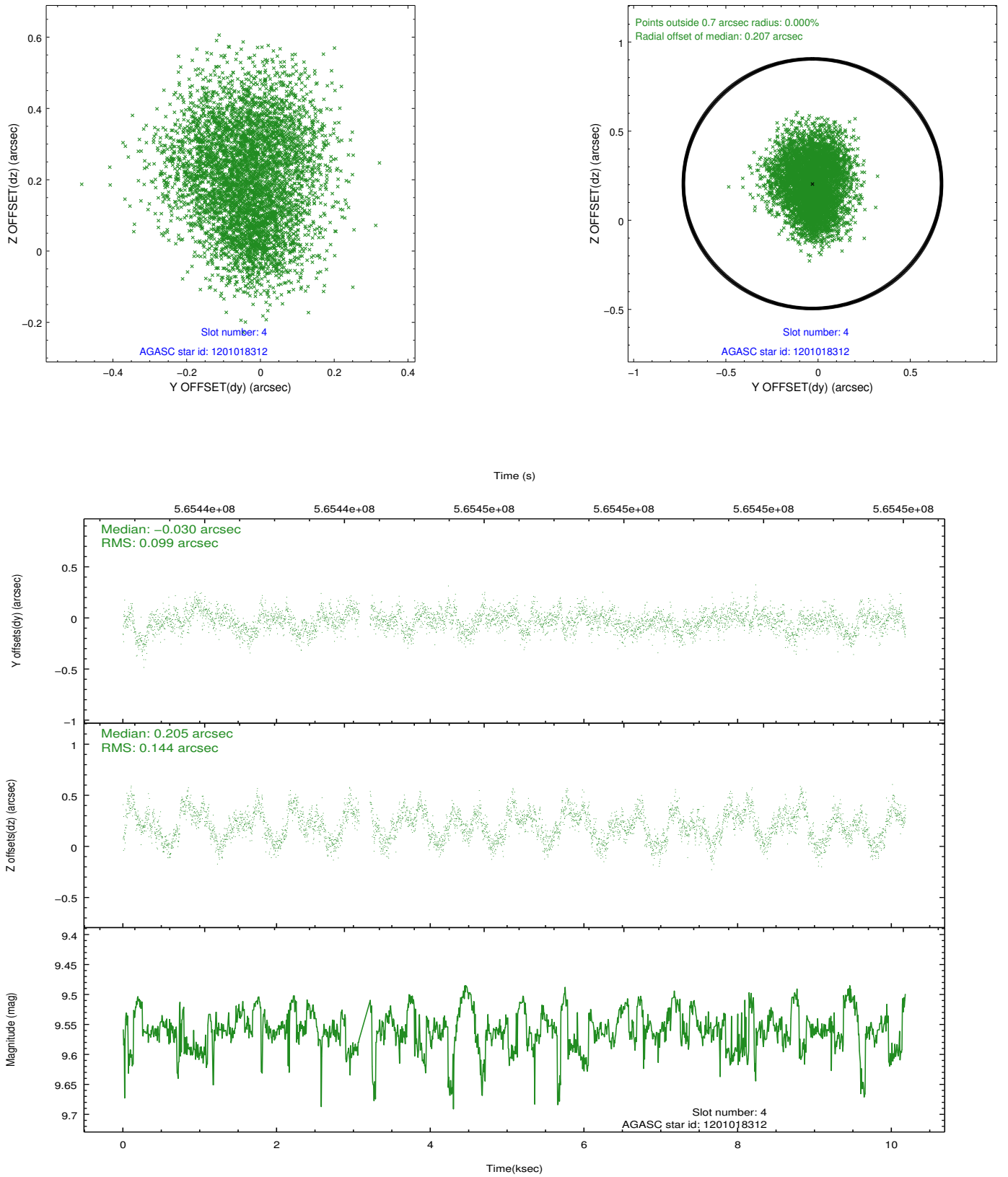
slot	status	used	id	mag	n_pts	med_dy	med_dz	dr1	dr2	ra	dec	mean_y	mean_z
0	FID		ACIS-I-1	7.26	2484	0.057	-0.012	0.024	0.036	0.000000	0.000000	922.33	-843.32
1	FID		ACIS-I-5	7.26	2484	-0.347	0.025	0.008	0.013	0.000000	0.000000	-1825.98	1053.82
2	FID		ACIS-I-6	7.27	2484	0.199	0.059	0.021	0.029	0.000000	0.000000	387.33	1699.05
3	GUIDE	used	1200884248	9.43	4962	0.042	0.010	0.136	0.223	83.880915	-68.565170	-1075.14	1909.13
4	GUIDE	used	1201018312	9.56	4888	-0.030	0.205	0.189	0.292	86.298231	-69.115627	2152.51	73.59
5	GUIDE	used	1201020040	8.57	4966	-0.123	-0.125	0.103	0.159	85.379163	-68.879396	939.39	883.17
6	GUIDE	used	1201018384	9.05	4967	-0.145	-0.156	0.159	0.243	85.801362	-68.593260	1452.02	1933.58
7	GUIDE	used	1200885760	9.41	4965	0.277	0.074	0.249	0.352	83.723637	-68.777667	-1229.40	1132.03

2.4 Star Slots

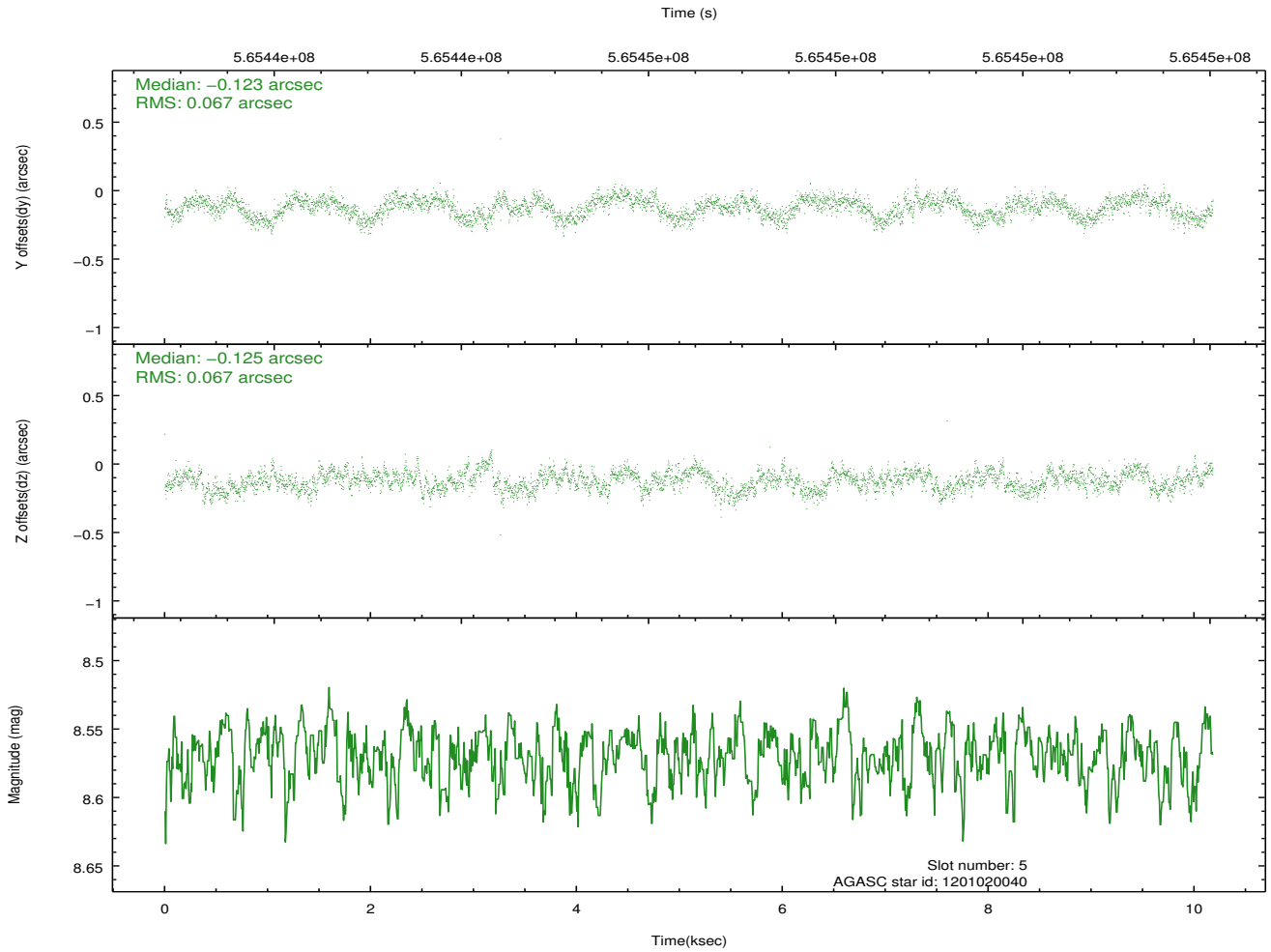
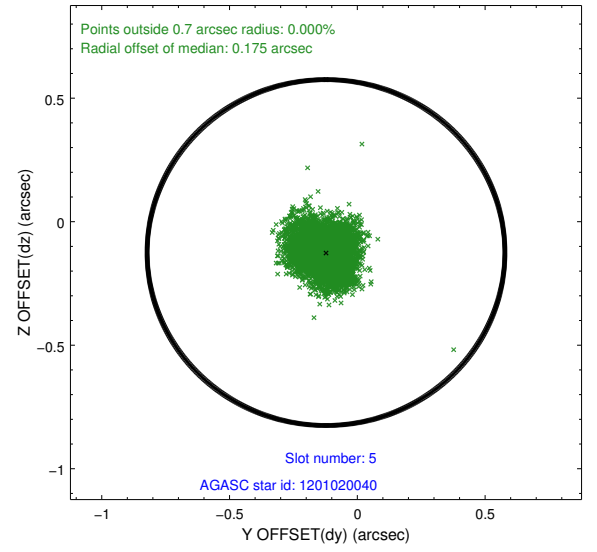
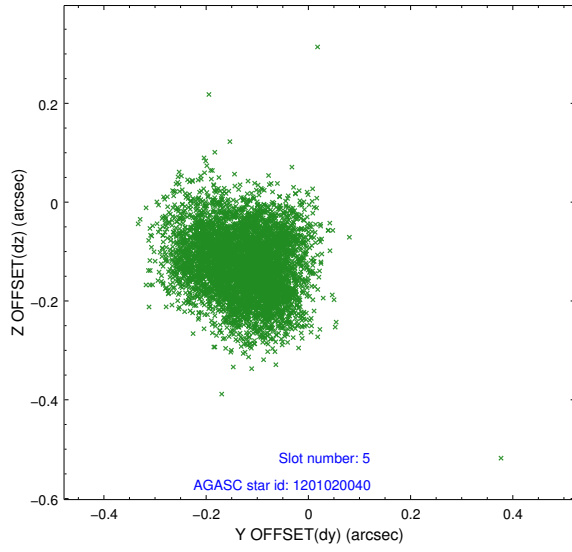
2.4.1 Slot 3



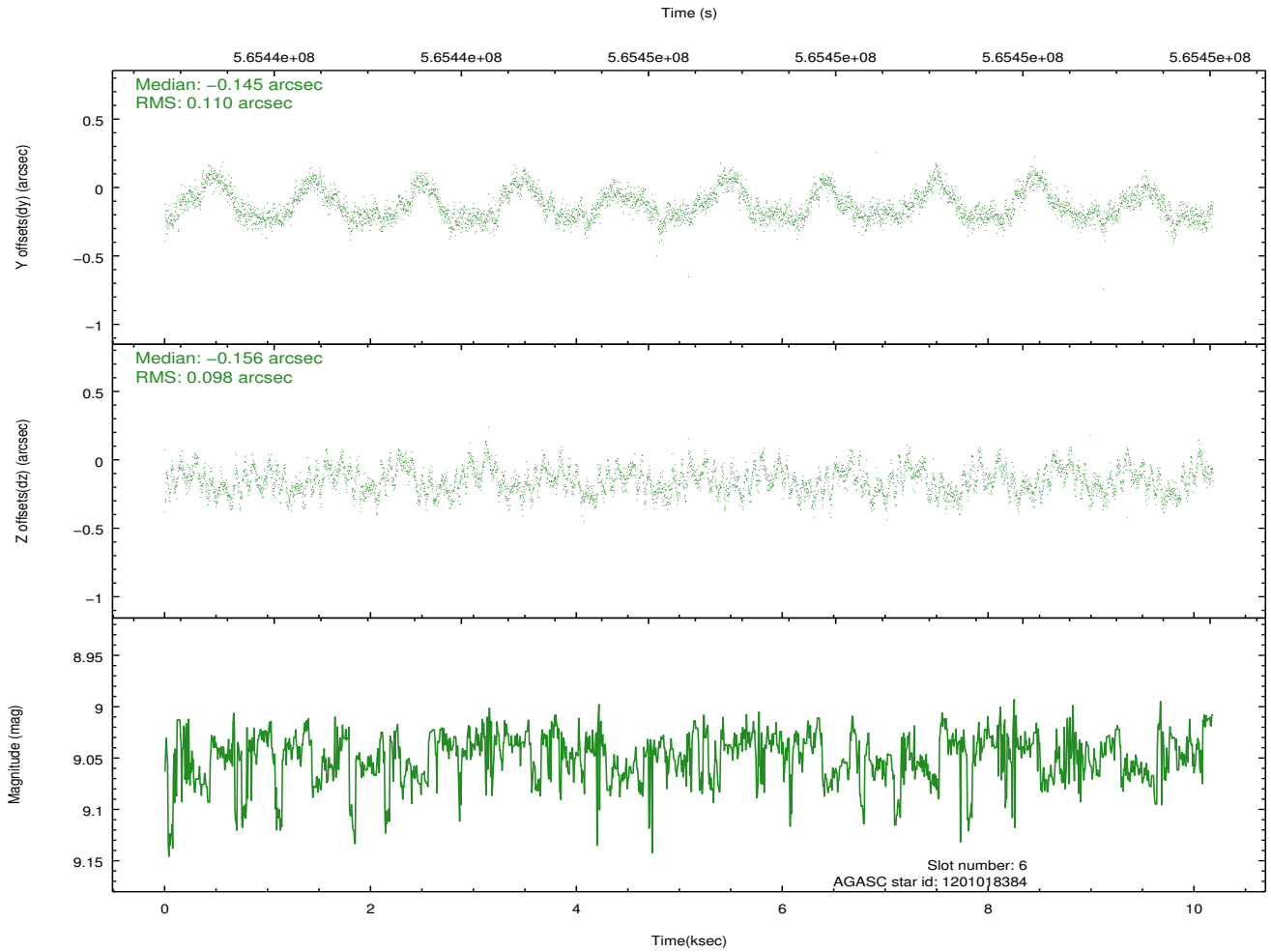
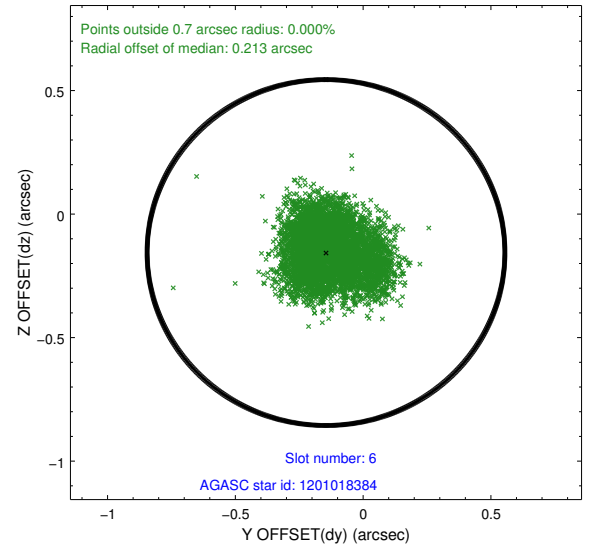
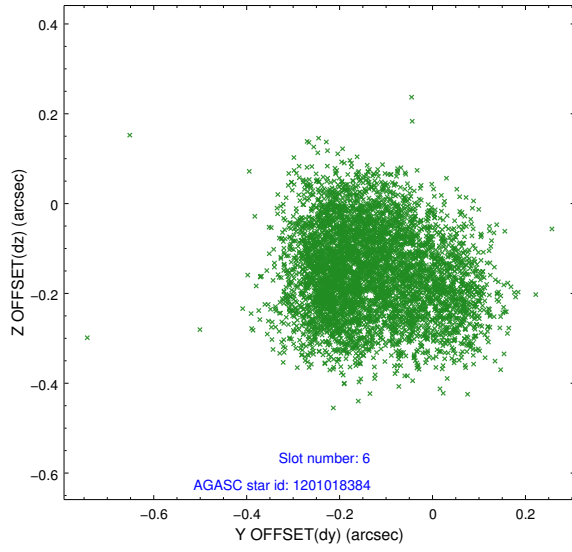
2.4.2 Slot 4



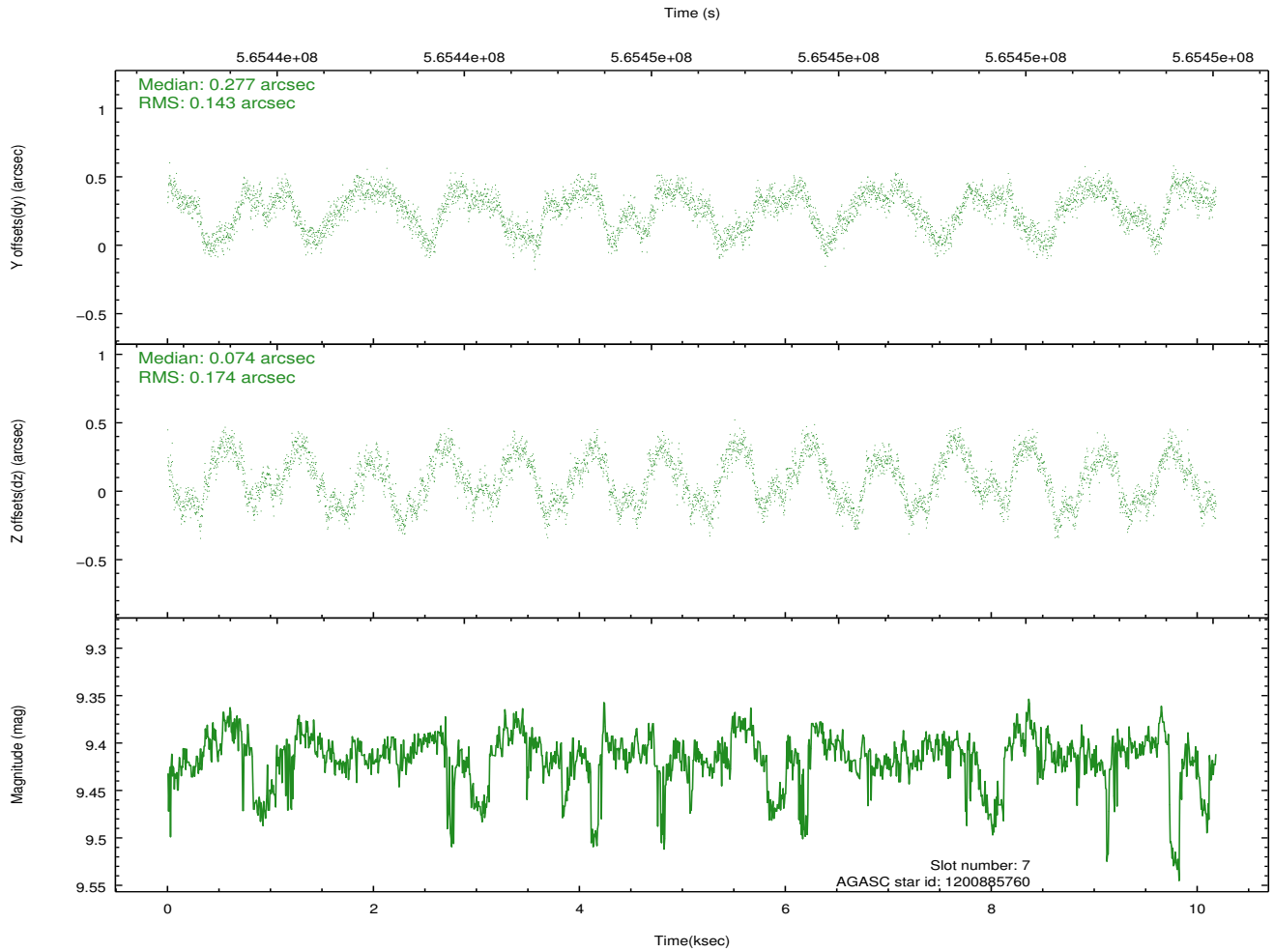
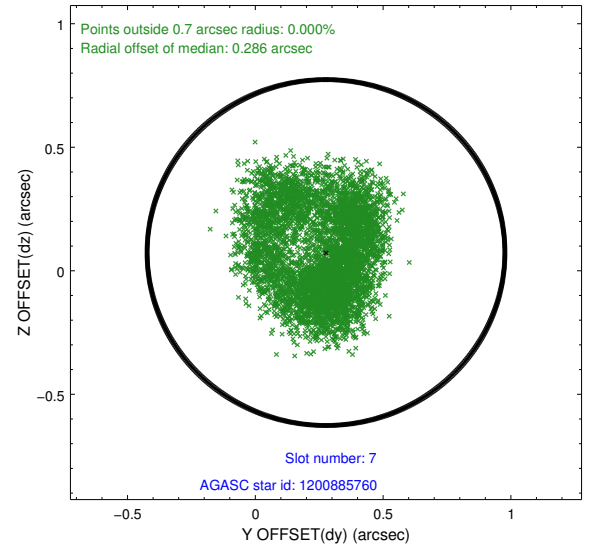
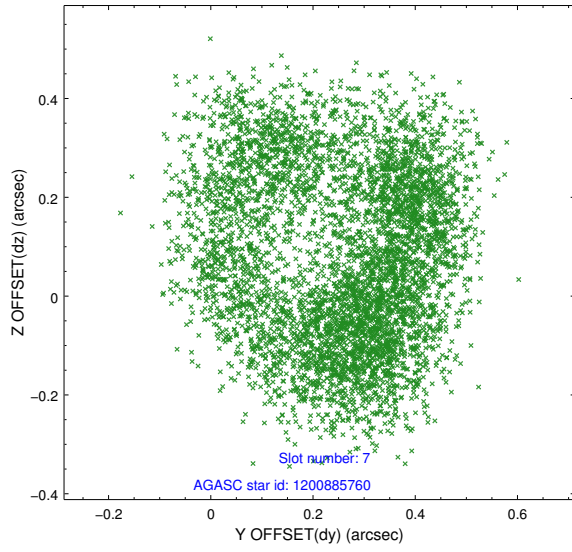
2.4.3 Slot 5



2.4.4 Slot 6

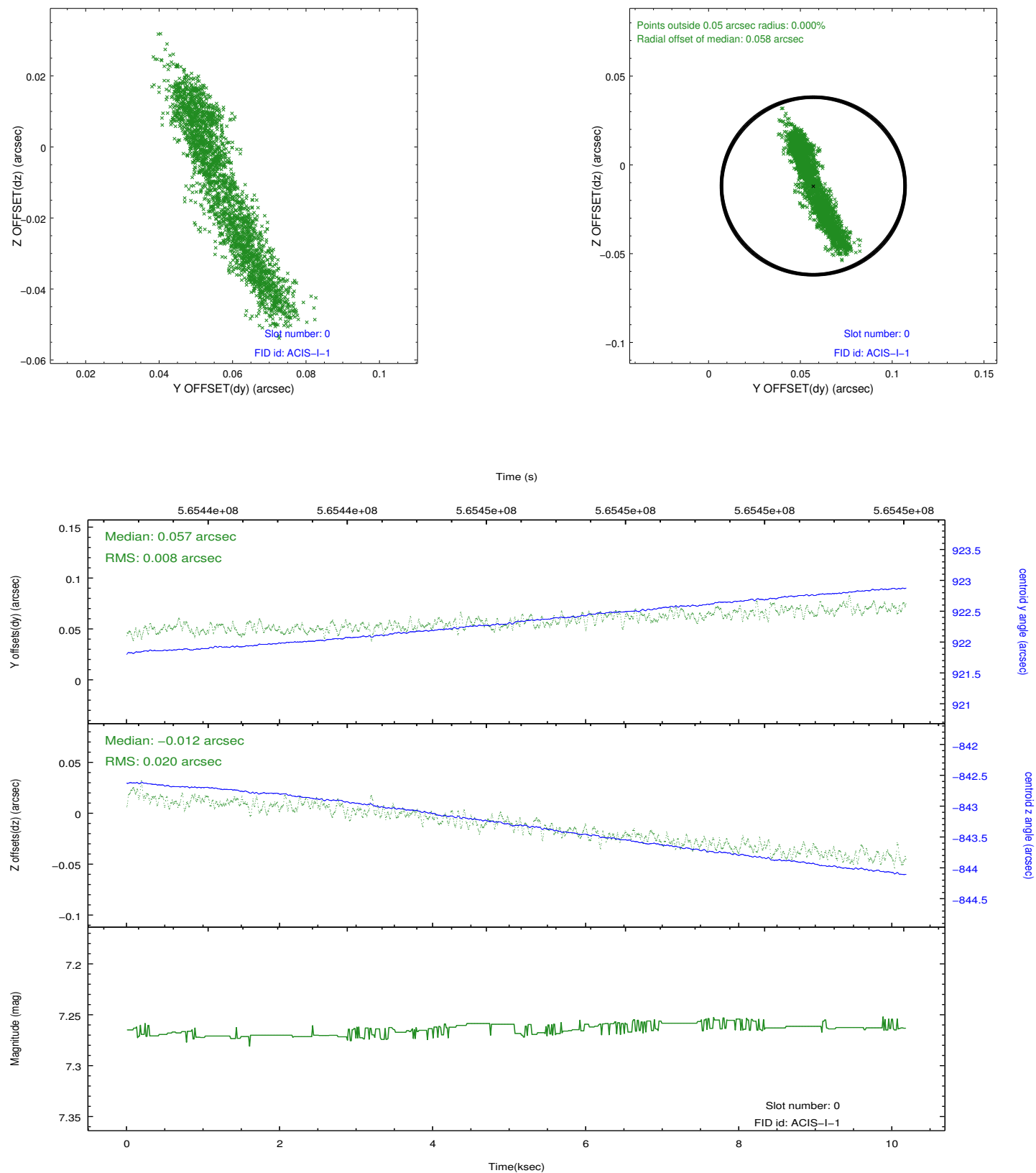


2.4.5 Slot 7

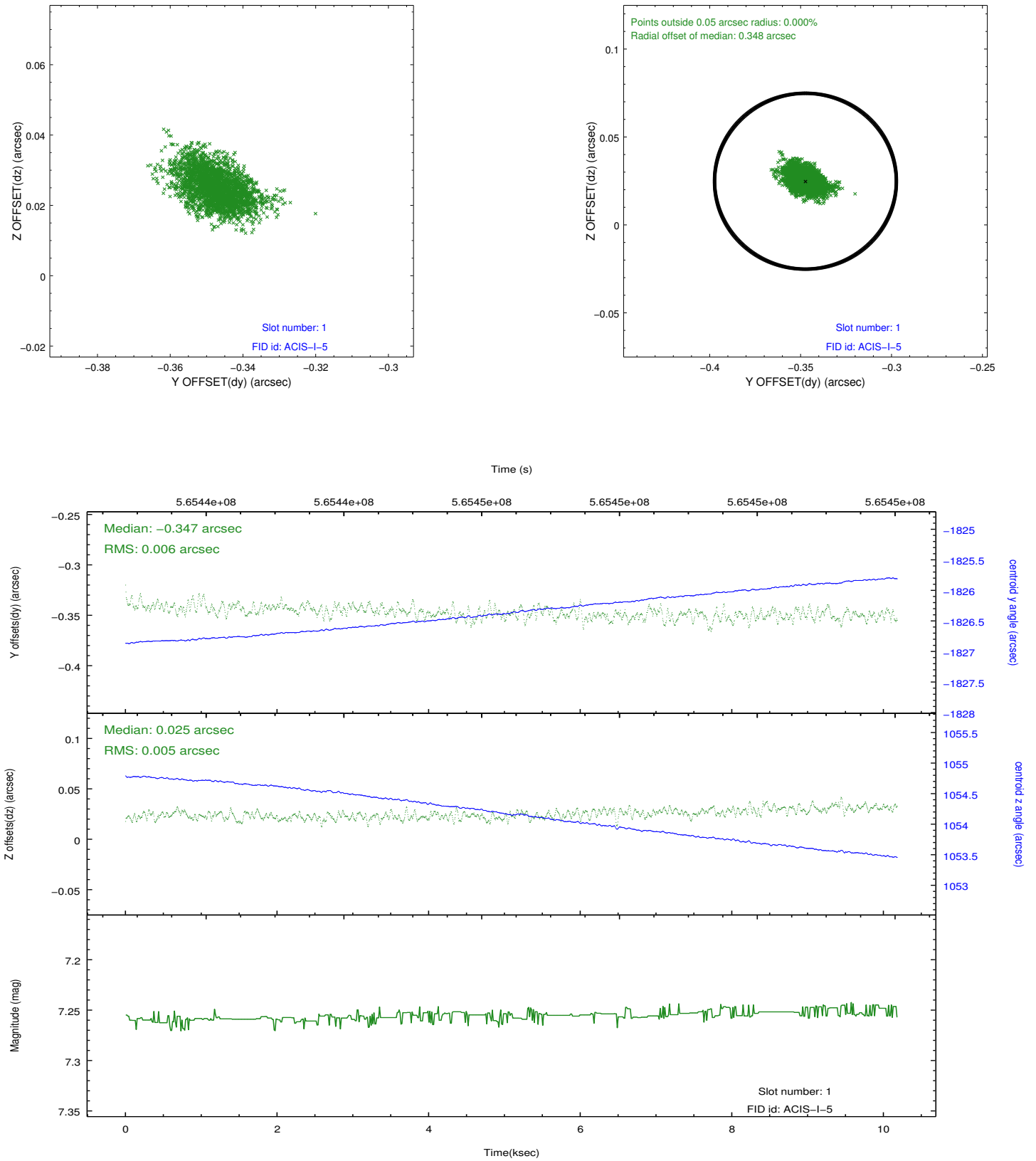


2.5 FID Slots

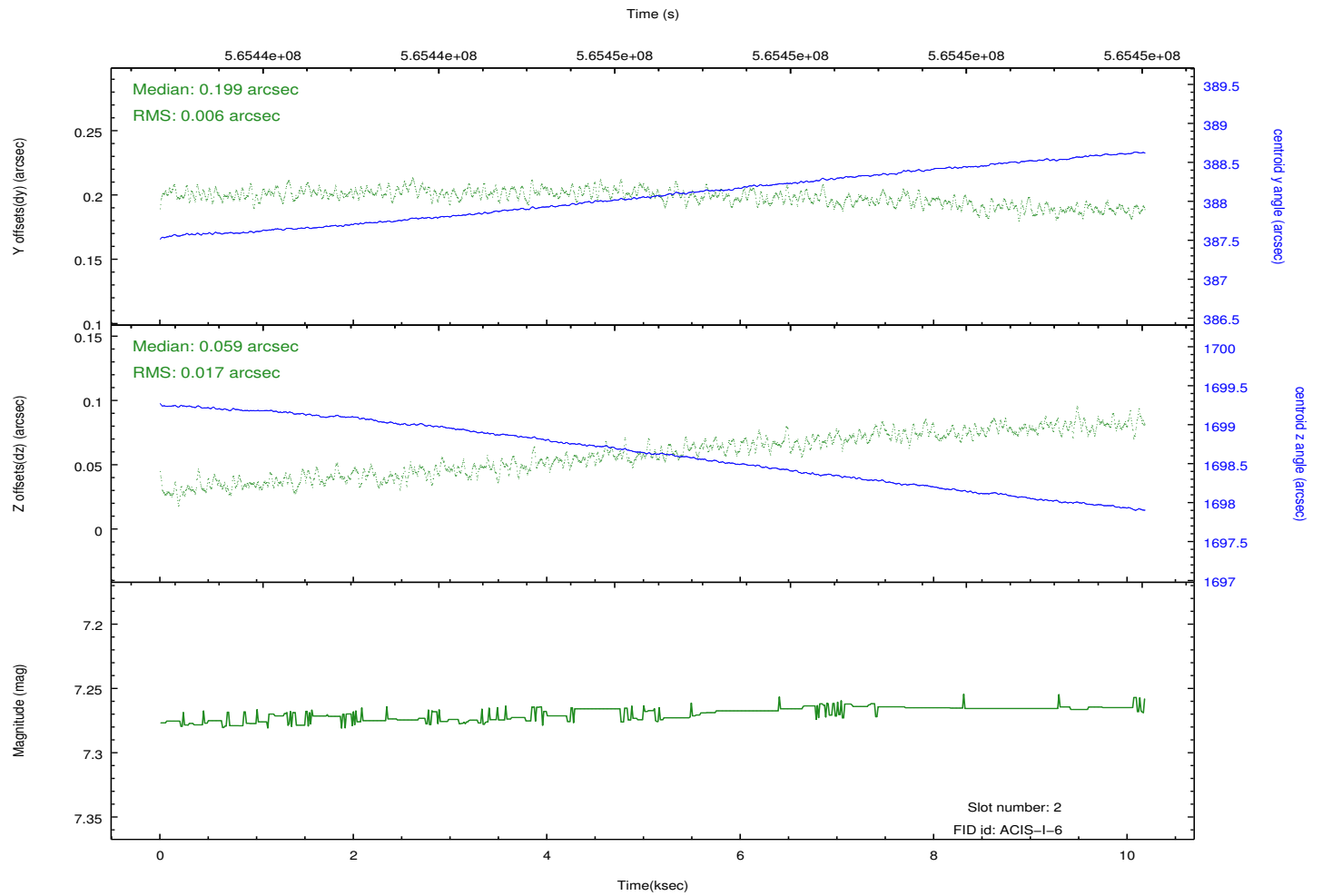
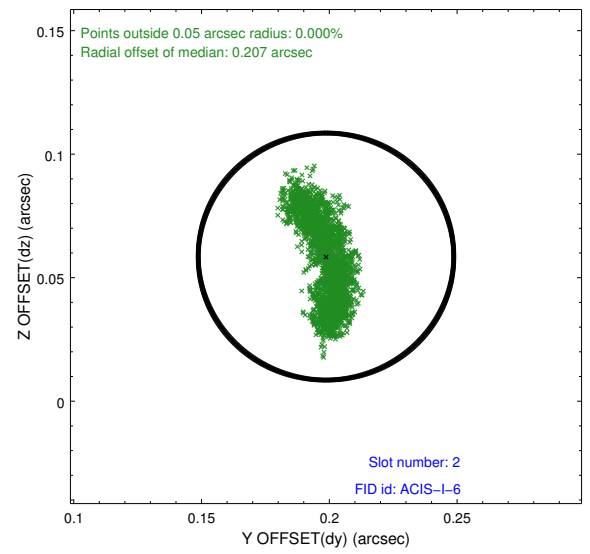
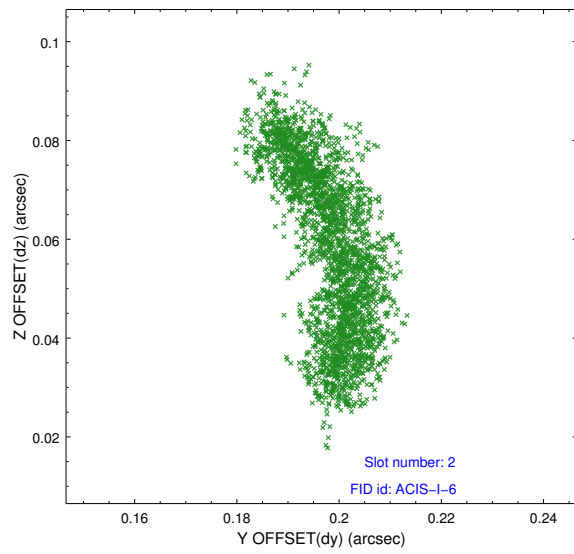
2.5.1 Slot 0



2.5.2 Slot 1



2.5.3 Slot 2



A Summary

A.1 Status

V&V Scientist	Joy Nichols
V&V Date (YYYY-MM-DD)	2015.12.03
V&V Edition	1
V&V Disposition and Status	OK
V&V Charge Time	9.9581866781712

A.2 Comments