

V&V Reference Report

L2 ASCDS Version : 10.4.2.1

Observation 18706 - L2 Version 1
Chandra X-Ray Center

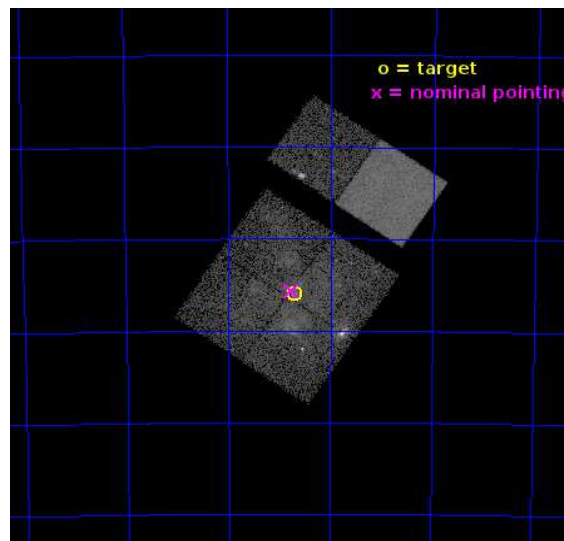
L2 Processing Date : Nov 11 2015

Contents

1	Front	2
2	OBI	3
2.1	OBI	3
2.1.1	Images	3
2.1.2	Bias	3
2.1.3	Parameters	4
2.1.4	Events	4
2.2	Compared Parameters	5
2.3	Aspect	6
2.4	Star Slots	9
2.4.1	Slot 3	9
2.4.2	Slot 4	10
2.4.3	Slot 5	11
2.4.4	Slot 6	12
2.4.5	Slot 7	13
2.5	FID Slots	14
2.5.1	Slot 0	14
2.5.2	Slot 1	15
2.5.3	Slot 2	16
A	Summary	17
A.1	Status	17
A.2	Comments	17

1 Front

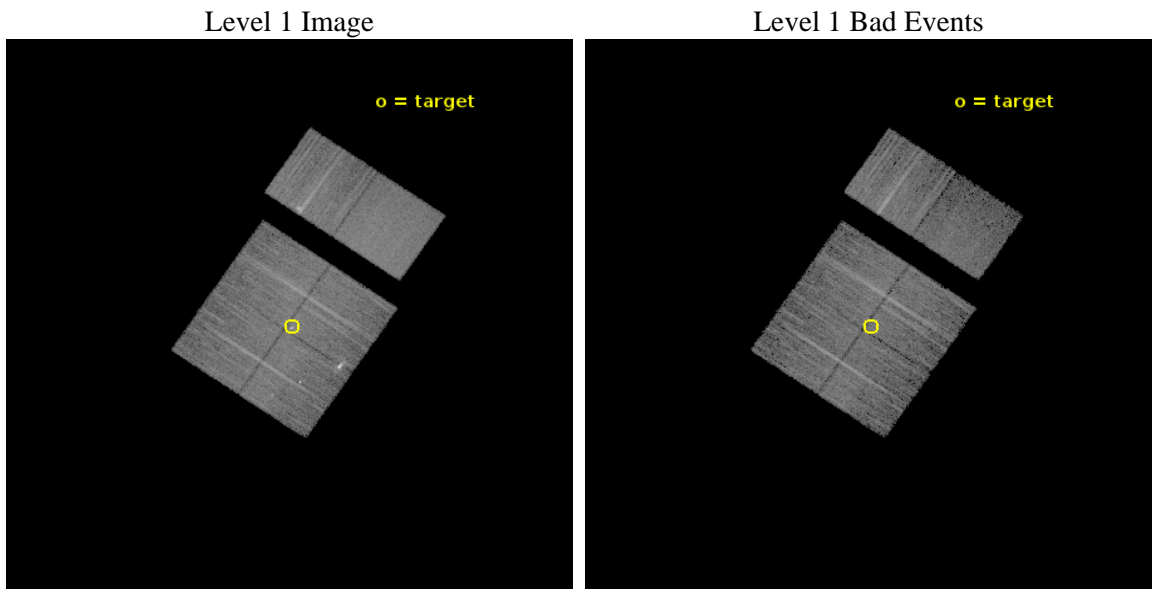
seq_num	901116	Sequence number
obs_id	18706	Observation id
title	The Tarantula -- Revealed by X-rays (T-ReX): A Definitive Chandra Investigation of 30 Doradus	Proposal title
observer	Dr. Leisa Townsley	Principal investigator
object	30 Doradus	Source name
dtcycle	0	
cycle	P	events from which exps? Prim/Second/Both
ra_targ	84.676667	Observer's specified target RA [deg]
dec_targ	-69.100806	Observer's specified target Dec [deg]
ra_nom	84.690833488762	Nominal RA [deg]
dec_nom	-69.09438604979	Nominal Dec [deg]
roll_nom	34.221937758853	Nominal Roll [deg]
revision	1	Processing version of data
ontime	14965.076703191	Sum of GTIs [s]
livetime	14775.579891088	Livetime [s]
ontime0	14964.953583241	Sum of GTIs [s]
ontime1	14964.994623184	Sum of GTIs [s]
ontime2	14961.794692874	Sum of GTIs [s]
ontime3	14965.076703191	Sum of GTIs [s]
ontime6	14965.158783197	Sum of GTIs [s]
ontime7	14965.117743254	Sum of GTIs [s]
l2events	93845	Number of level 2 events



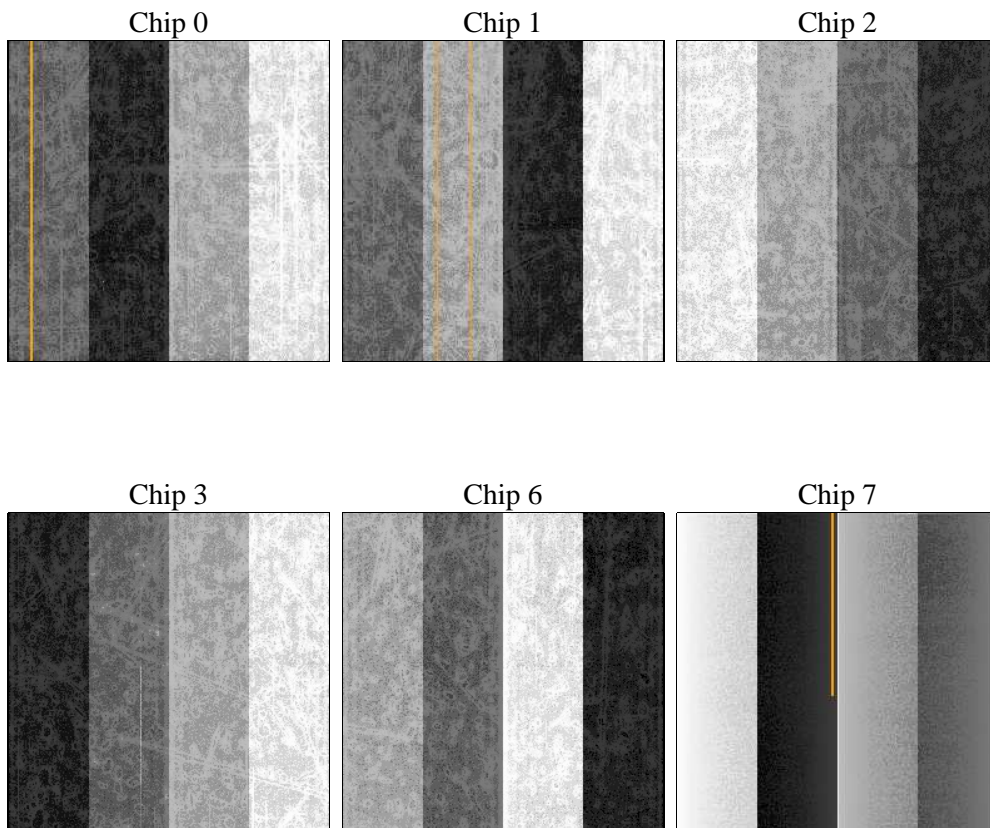
2 OBI

2.1 OBI

2.1.1 Images



2.1.2 Bias



2.1.3 Parameters

obi_num	0	Obi number	sched_exp_time	15000.000000	[s] Scheduled observation exposure time
ascdsver	10.4.2.1	Processing system revision	ontime	14965.076703191	Sum of GTIs [s]
caldsver	4.6.10a	 	ontime0	14964.953583241	Sum of GTIs [s]
date	2015-11-11T06:32:33	Date and time of file creation	ontime1	14964.994623184	Sum of GTIs [s]
revision	1	Processing version of data	ontime2	14961.794692874	Sum of GTIs [s]
			ontime3	14965.076703191	Sum of GTIs [s]
			ontime6	14965.158783197	Sum of GTIs [s]
			ontime7	14965.117743254	Sum of GTIs [s]
			l1events	444183	Number of level 1 events

2.1.4 Events

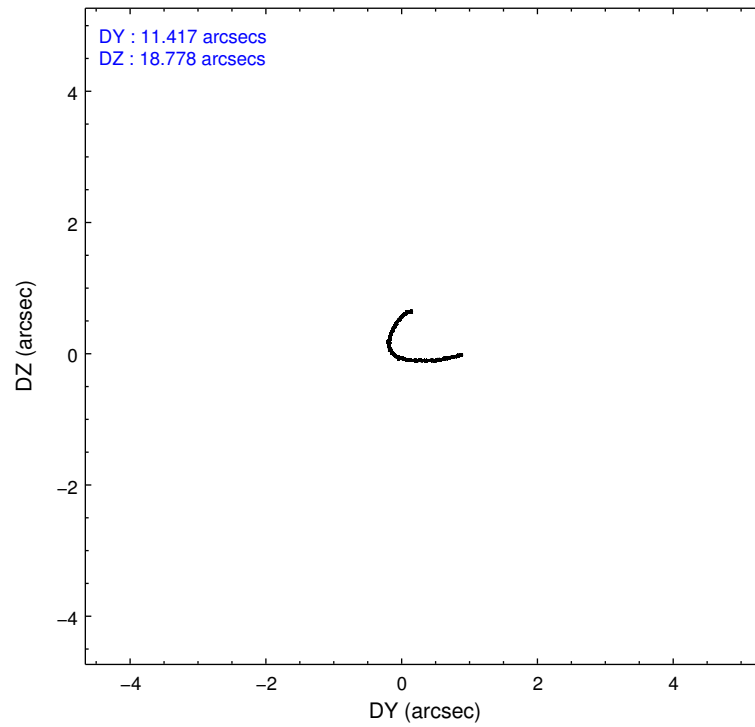
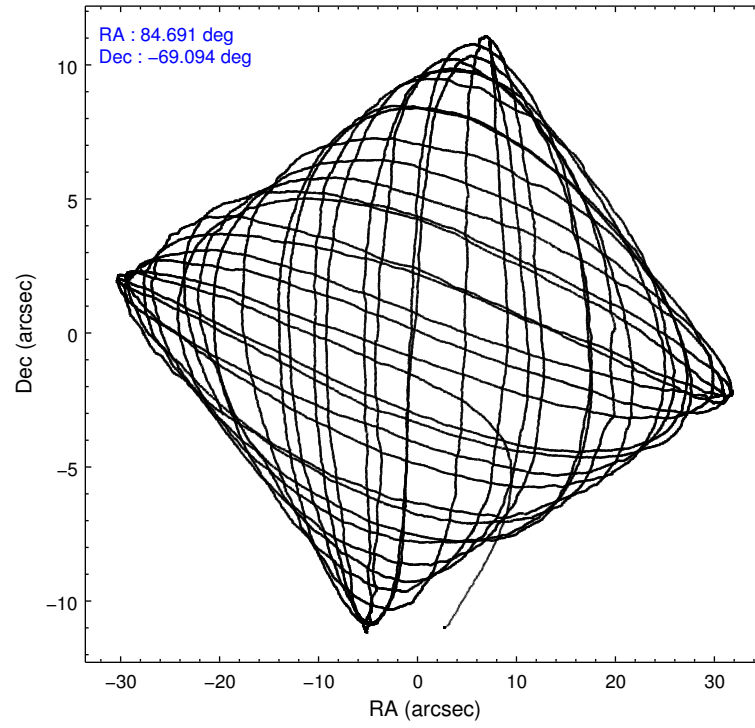
	ccd 0	ccd 1	ccd 2	ccd 3	ccd 6	ccd 7		ccd 0	ccd 1	ccd 2	ccd 3	ccd 6	ccd 7
level 1 events	66638	72846	73042	74129	74868	82660	grade 0 events	5111	10573	5593	8692	4317	3734
rejected events	56004	54991	62120	59541	64826	43753		7%	14%	7%	11%	5%	4%
rejected %	84%	75%	85%	80%	86%	52%	grade 1 events	52	88	41	78	43	116
								0%	0%	0%	0%	0%	0%
							grade 2 events	2260	2973	2161	2302	2069	8431
								3%	4%	2%	3%	2%	10%
							grade 3 events	833	1090	864	1008	853	3390
								1%	1%	1%	1%	1%	4%
							grade 4 events	833	1146	841	1005	904	3327
								1%	1%	1%	1%	1%	4%
							grade 5 events	2679	2946	2453	3243	3177	8580
								4%	4%	3%	4%	4%	10%
							grade 6 events	1600	2081	1467	1595	1903	20041
								2%	2%	2%	2%	2%	24%
							grade 7 events	53270	51949	59622	56206	61602	35041
								79%	71%	81%	75%	82%	42%

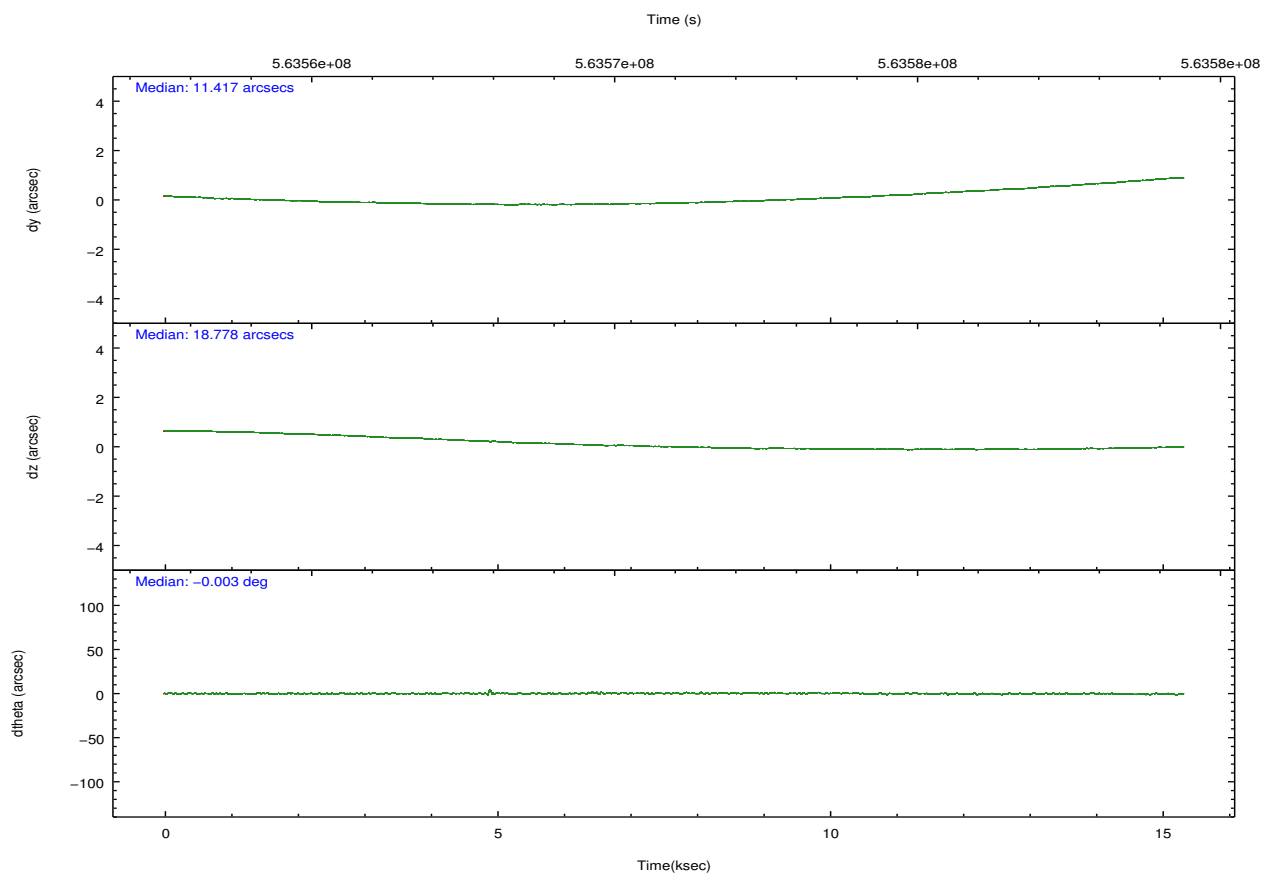
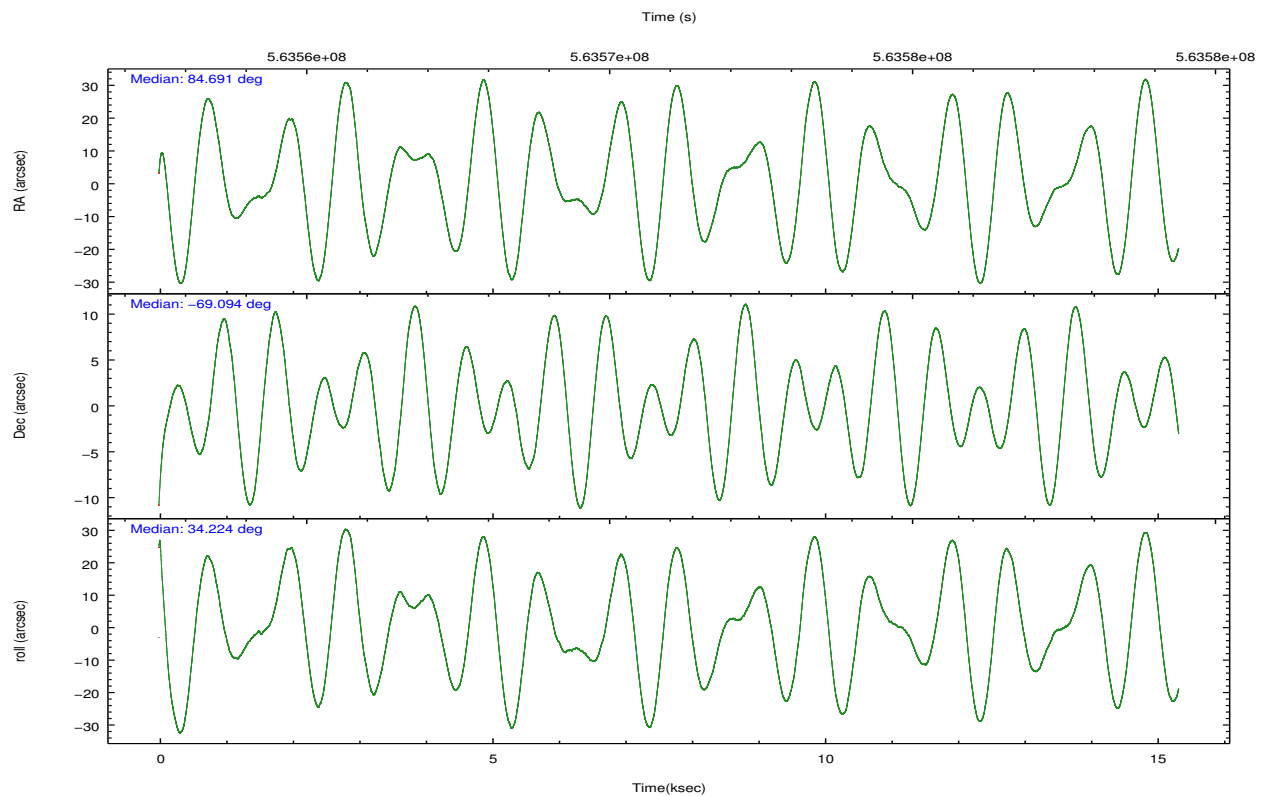
2.2 Compared Parameters

Parameter	Planned	Actual
Instrument	ACIS	ACIS
Detector	ACIS-012367	ACIS-012367
Grating	NONE	NONE
Data mode	VFAINT	VFAINT
Observation mode	POINTING	POINTING
[deg] Pointing RA	84.657504	84.69083348876195
[deg] Pointing Dec	-69.119269	-69.09438604979029
[deg] Pointing Roll	33.982095	34.22193775885276
[mm] SIM focus pos	-0.782348	-0.7809083437167272
[mm] SIM defocus	0	0.001439871863259334
[mm] SIM translation stage pos	-233.592463	-233.5874344608287
[mm] SIM translation stage offset	0	-0.005018542100998502
[s] Observation start time (MET)	563563636.184000	563562599.1137201
Observation start date	2015-11-10T17:26:08	2015-11-10T17:09:59
[s] Observation end time (MET)	563578636.184000	563579336.85216
Observation end date	2015-11-10T21:36:08	2015-11-10T21:48:56
Read mode	TIMED	TIMED

Parameter	Planned	Actual
Obspar format version number	7	7
Obspar file type	PREDICTED	ACTUAL
Obspar update status	NONE	UPDATED
CCD I0 on	Y	Y
CCD I1 on	Y	Y
CCD I2 on	Y	Y
CCD I3 on	Y	Y
CCD S0 on	N	N
CCD S1 on	N	N
CCD S2 on	O1	Y
CCD S3 on	O2	Y
CCD S4 on	N	N
CCD S5 on	N	N
Number of optional ACIS chips dropped	0	0
On-chip summing requested	N	N
Subarray requested	NONE	NONE
Alternating exposures requested	N	N
[s] Primary exposure time	0.000000	3.2

2.3 Aspect



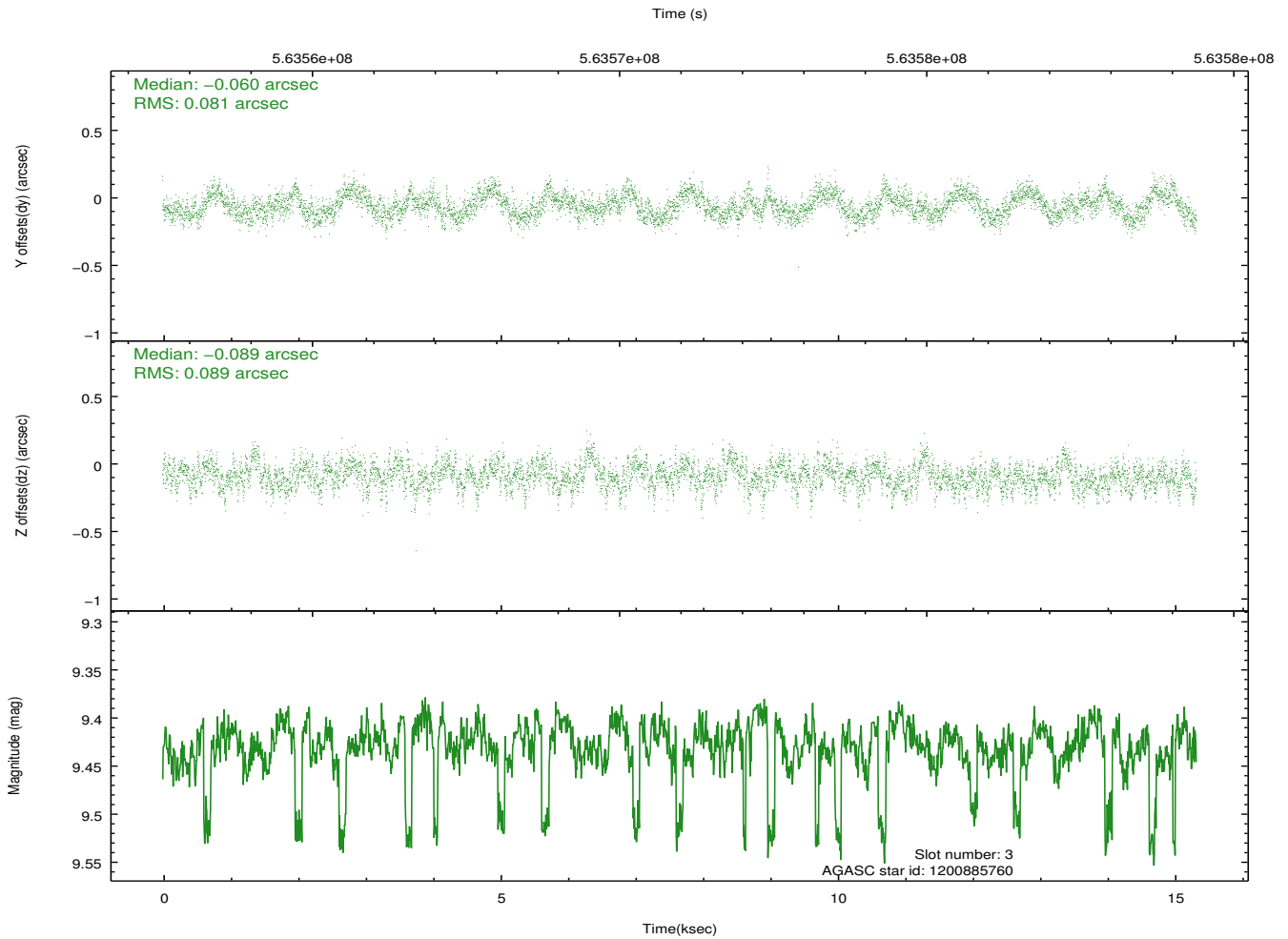
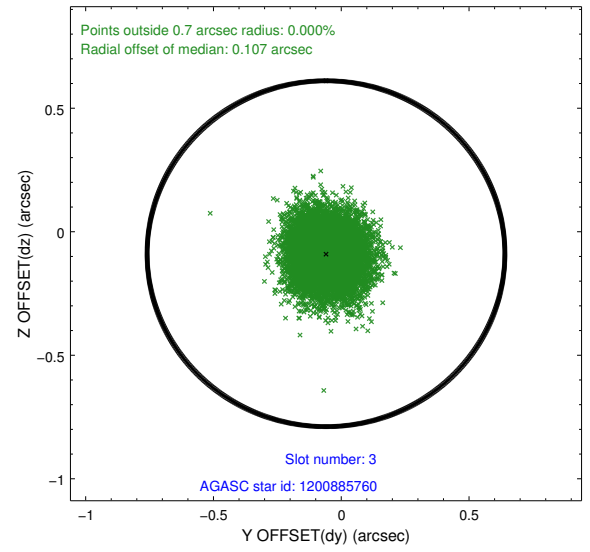
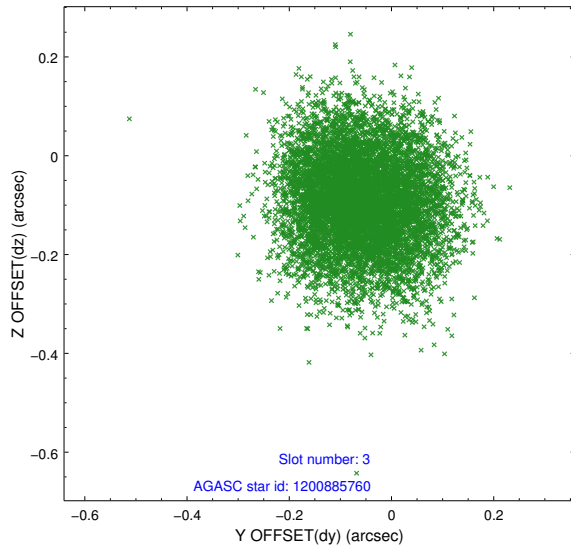


Slot Statistics

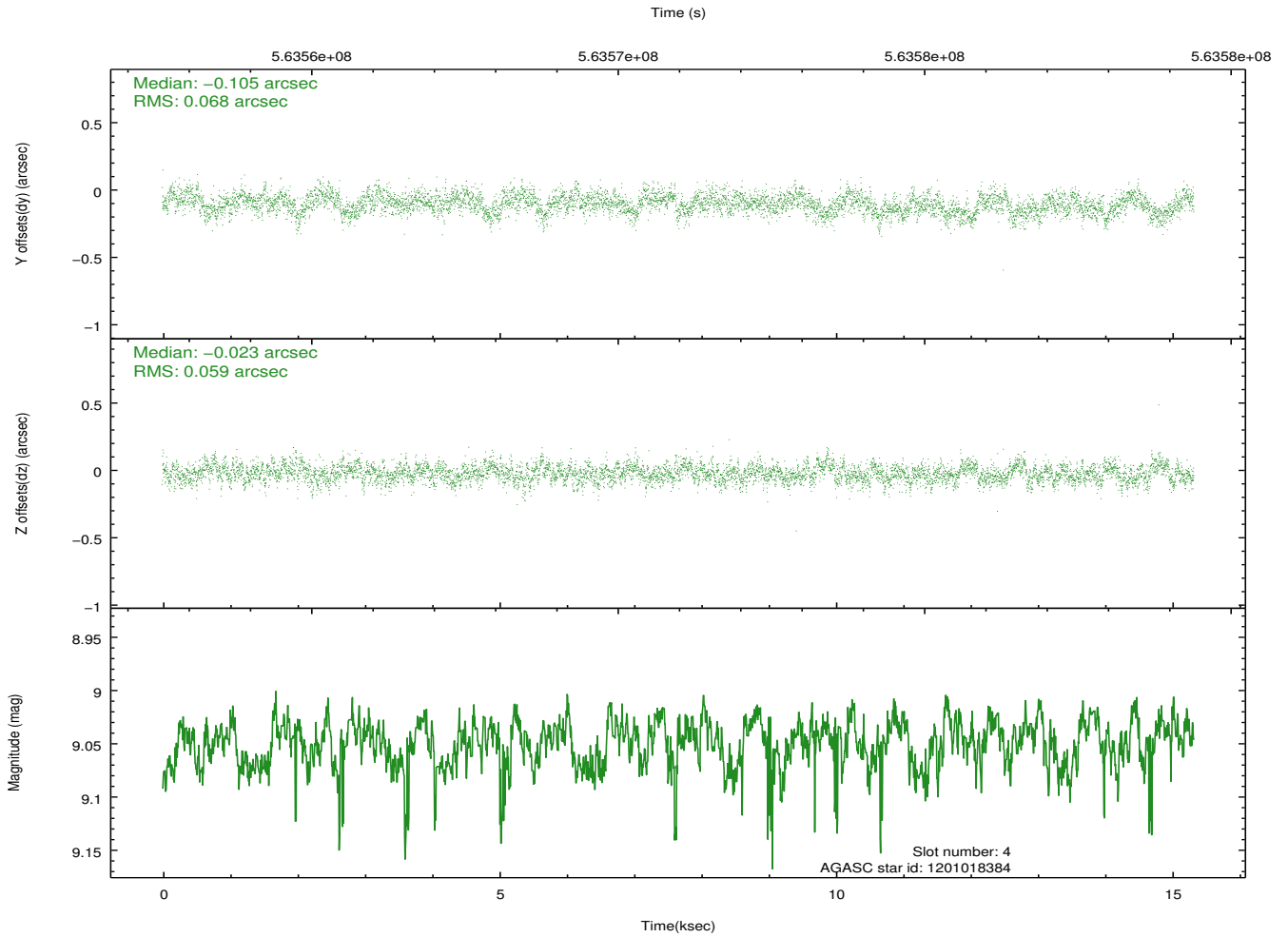
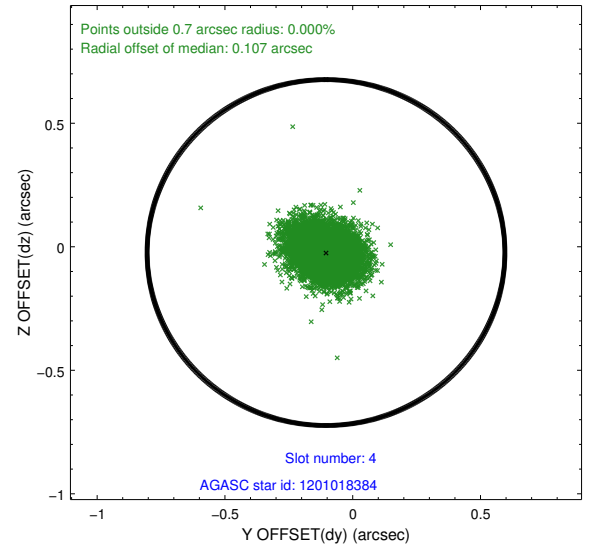
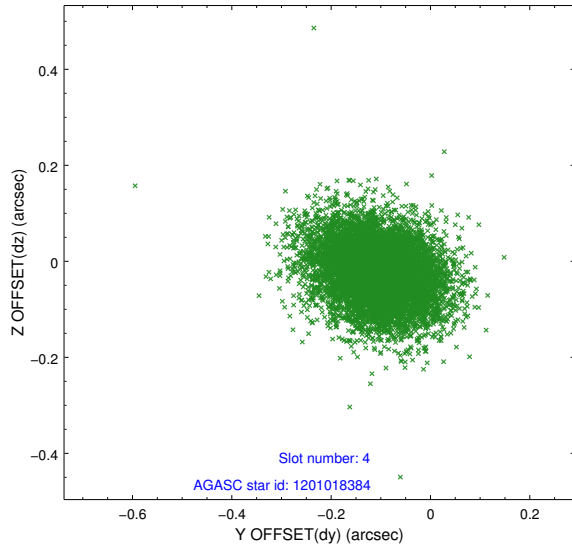
slot	status	used	id	mag	n_pts	med_dy	med_dz	dr1	dr2	ra	dec	mean_y	mean_z
0	FID		ACIS-I-1	7.24	3740	0.066	-0.004	0.010	0.017	0.000000	0.000000	928.12	-842.60
1	FID		ACIS-I-5	7.25	3740	-0.279	0.056	0.007	0.013	0.000000	0.000000	-1820.22	1054.74
2	FID		ACIS-I-6	7.25	3740	0.122	0.017	0.010	0.017	0.000000	0.000000	393.34	1699.59
3	GUIDE	used	1200885760	9.43	7471	-0.060	-0.089	0.130	0.206	83.723637	-68.777667	-326.69	1692.09
4	GUIDE	used	1201018384	9.05	7467	-0.105	-0.023	0.095	0.158	85.801362	-68.593260	2297.59	718.66
5	GUIDE	used	1201019672	6.81	7479	-0.082	-0.119	0.077	0.126	85.312192	-68.770187	1408.01	561.40
6	GUIDE	used	1201020040	8.57	7476	-0.083	-0.129	0.079	0.128	85.379163	-68.879396	1256.16	188.36
7	GUIDE	used	1201542672	8.19	7474	0.323	0.362	0.095	0.149	84.492488	-69.957531	-1852.92	-2386.48

2.4 Star Slots

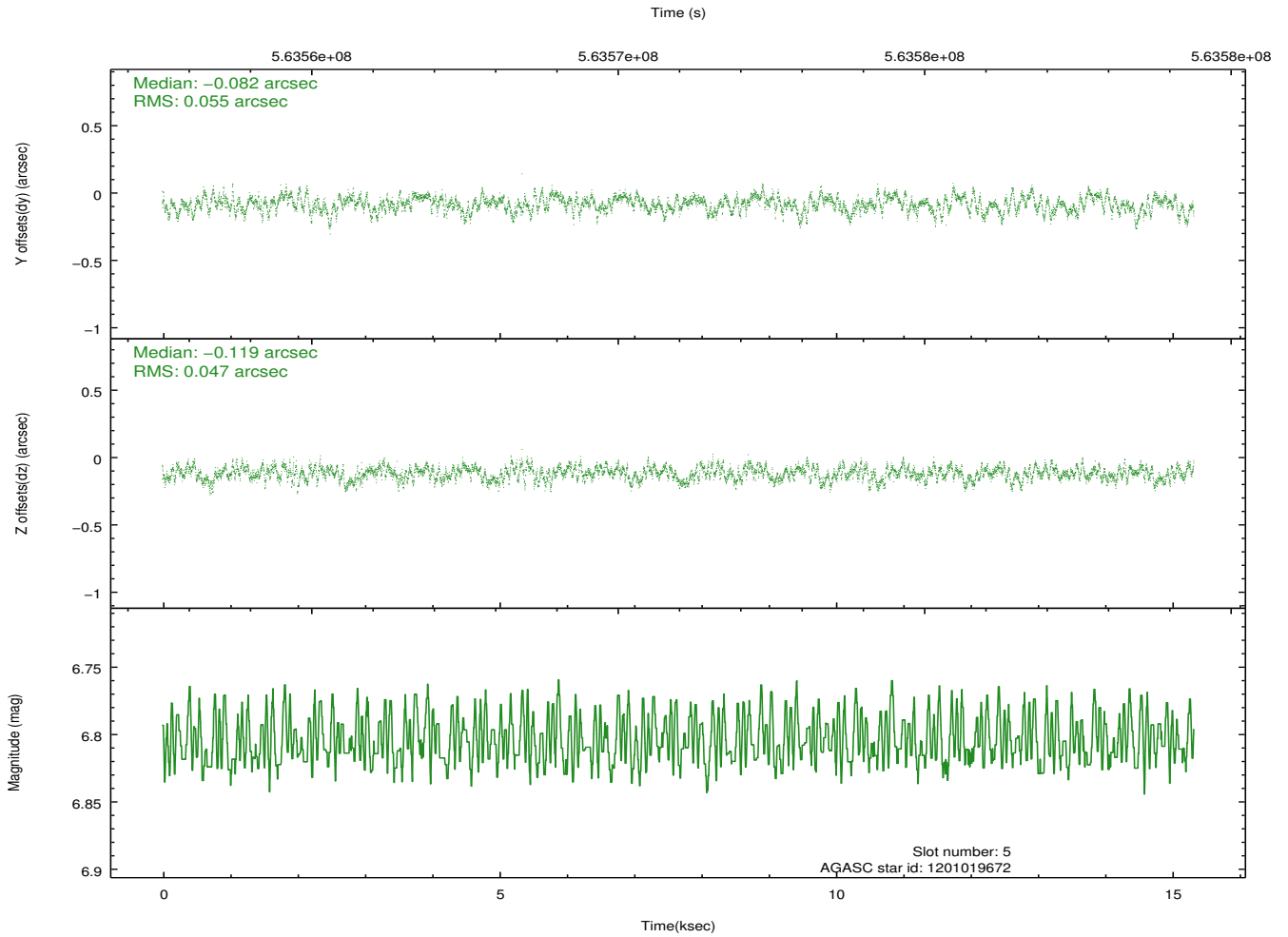
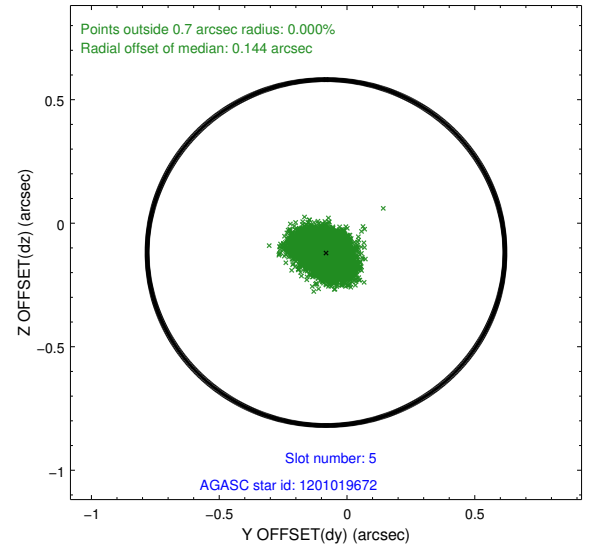
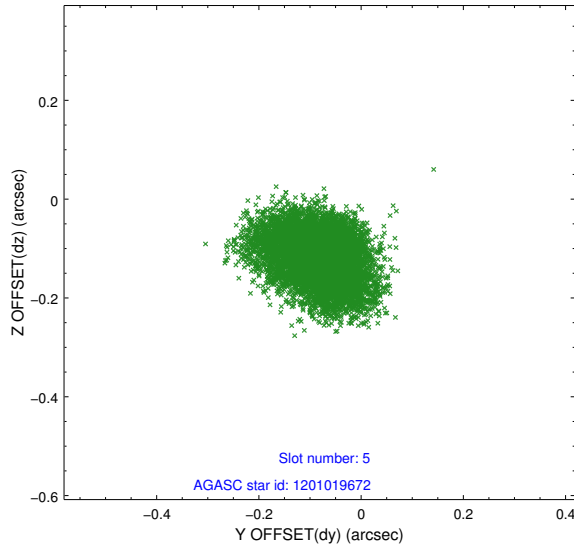
2.4.1 Slot 3



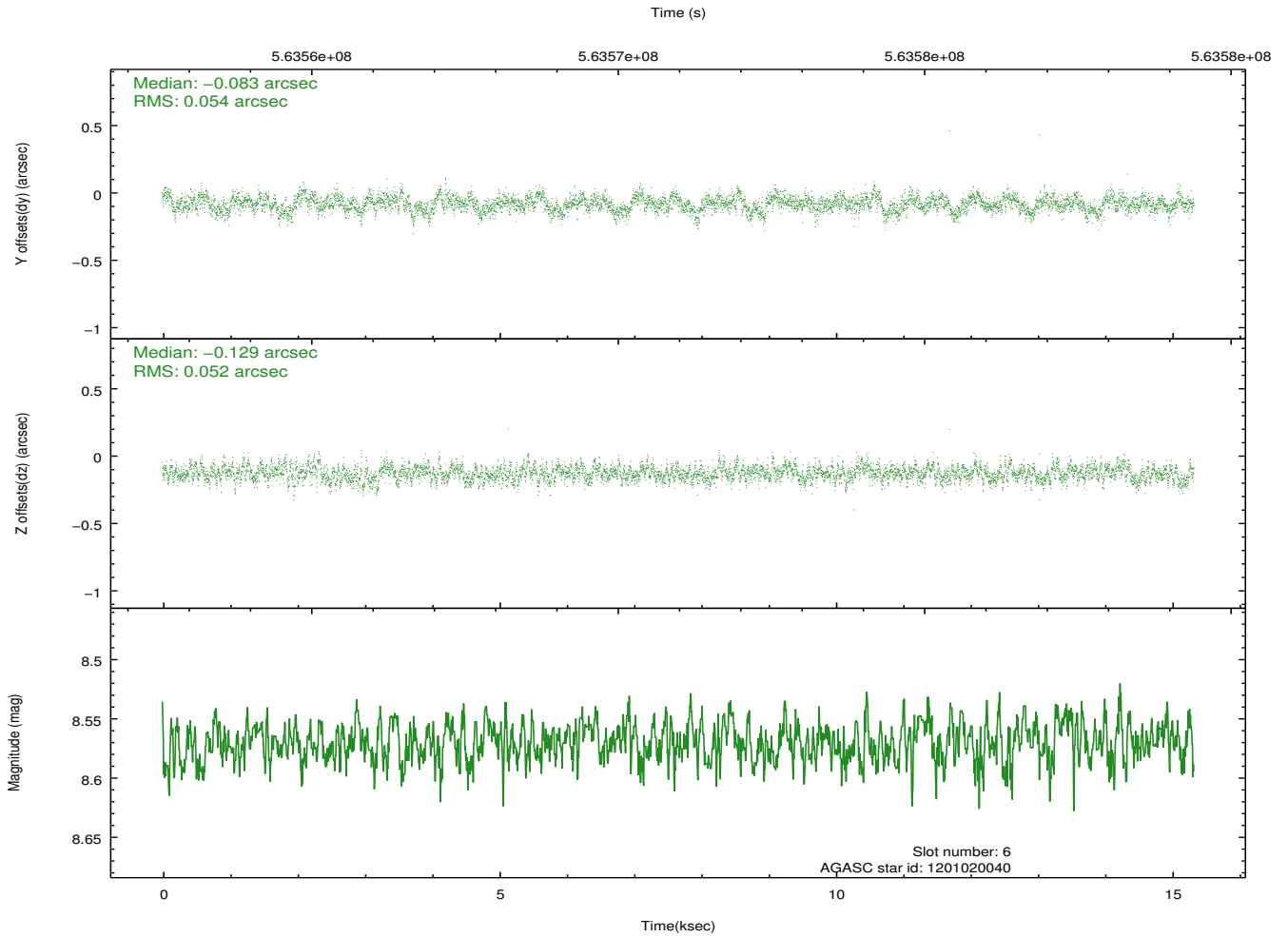
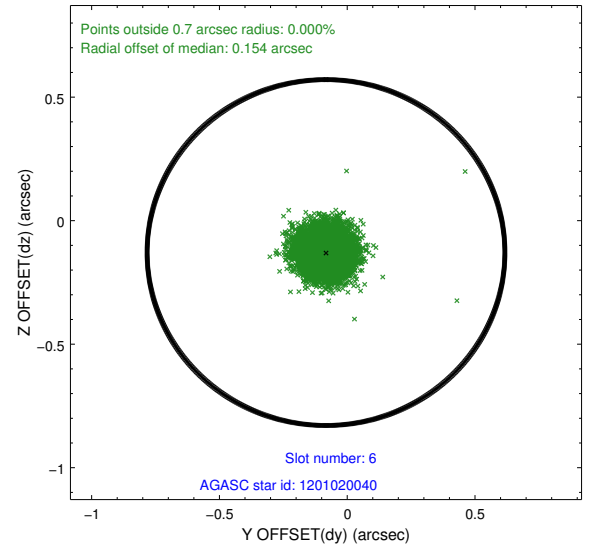
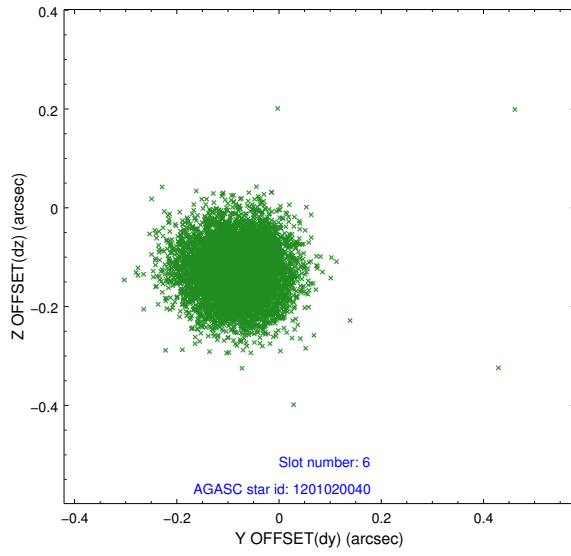
2.4.2 Slot 4



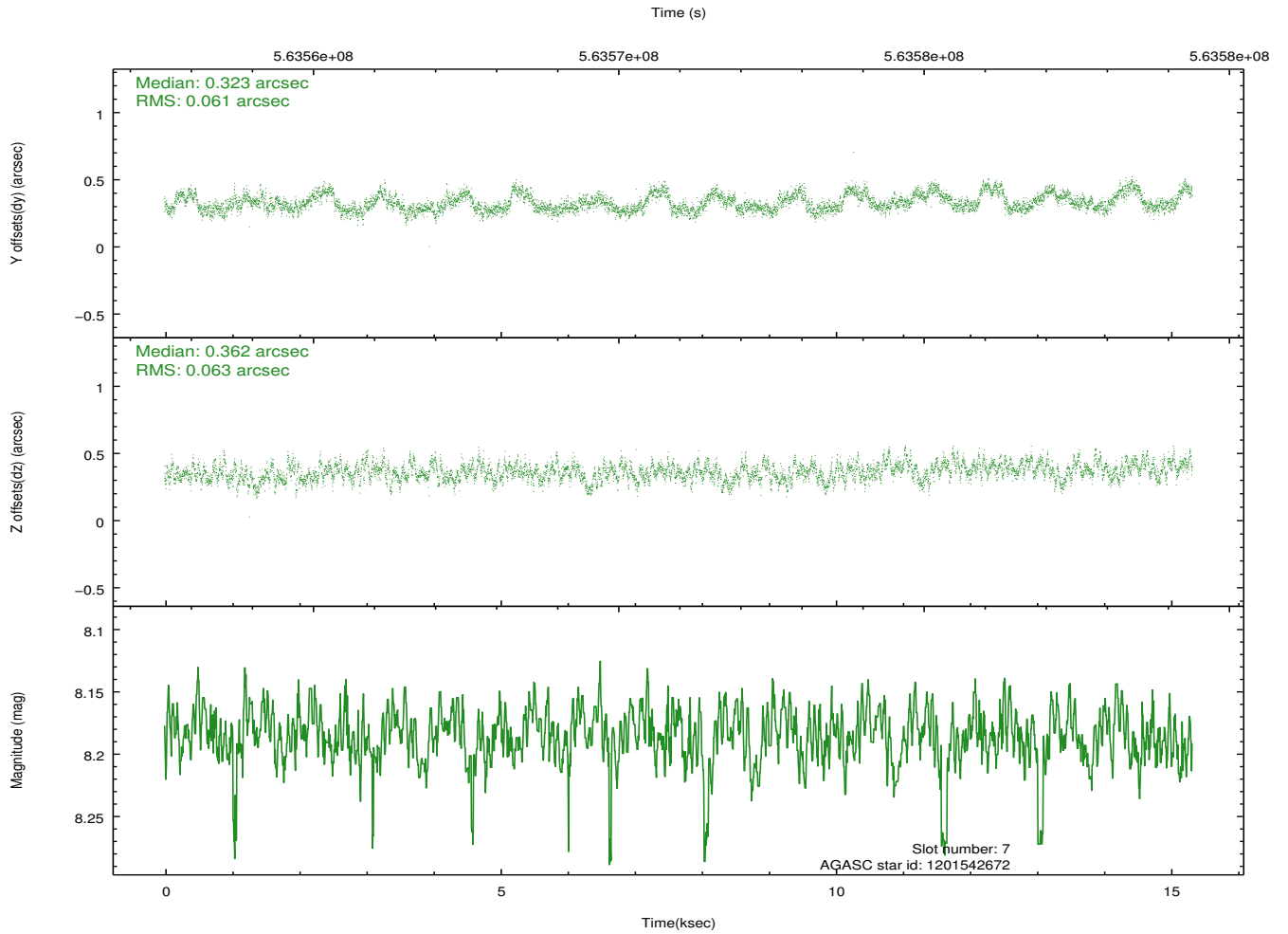
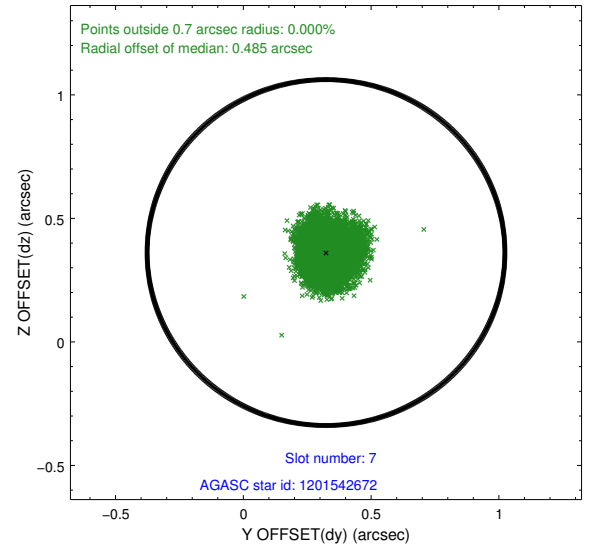
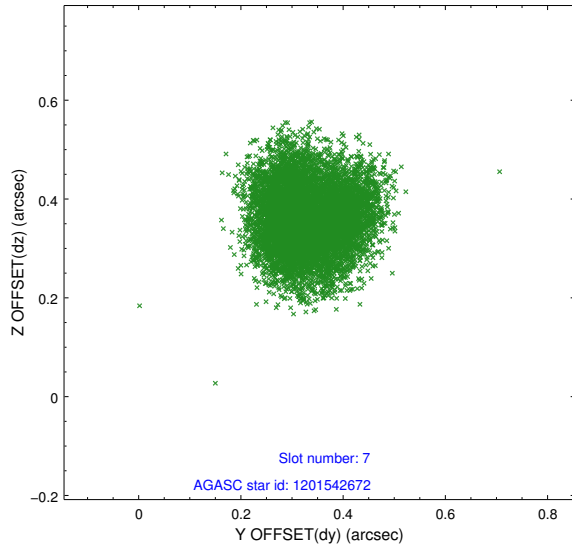
2.4.3 Slot 5



2.4.4 Slot 6

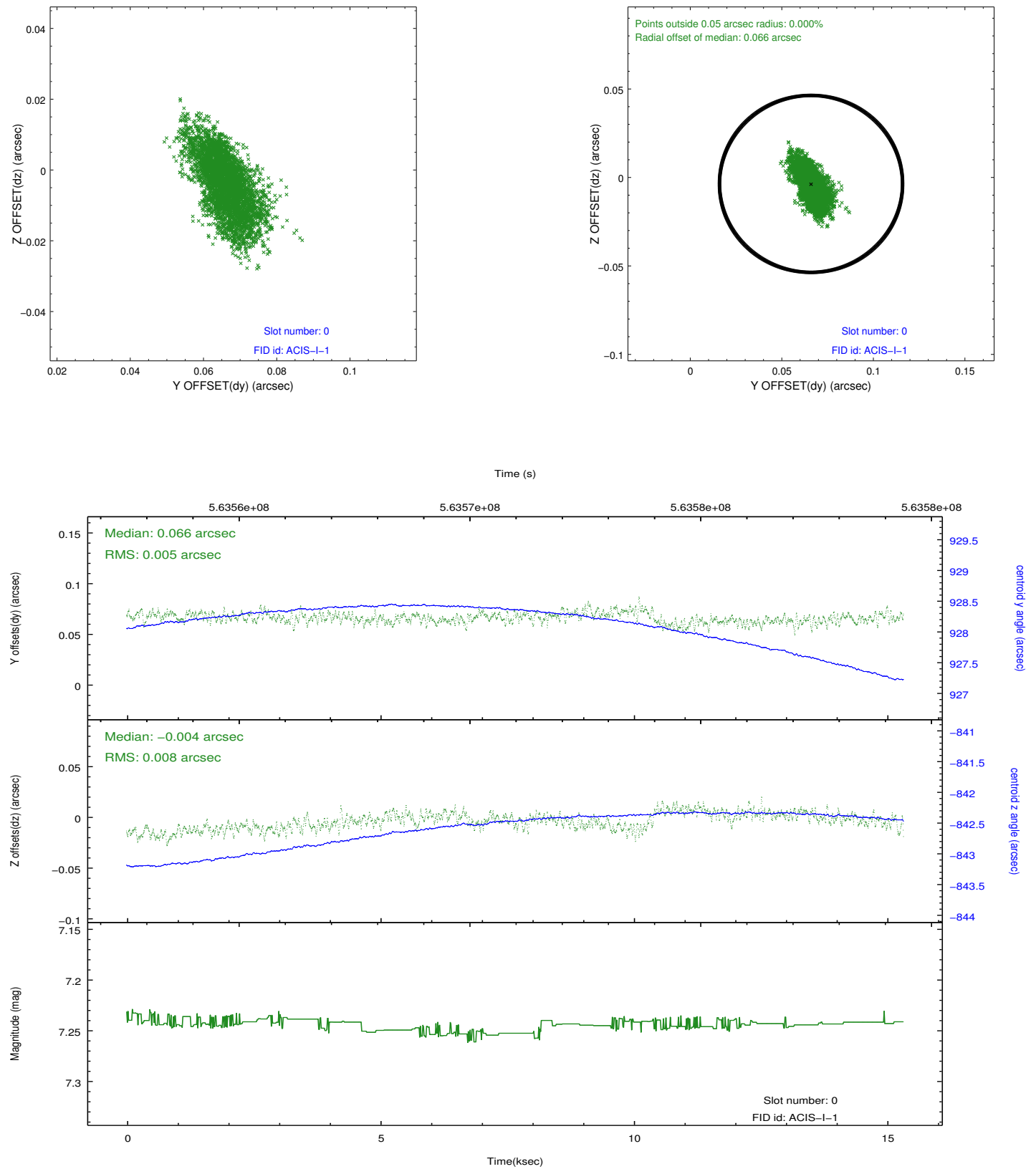


2.4.5 Slot 7

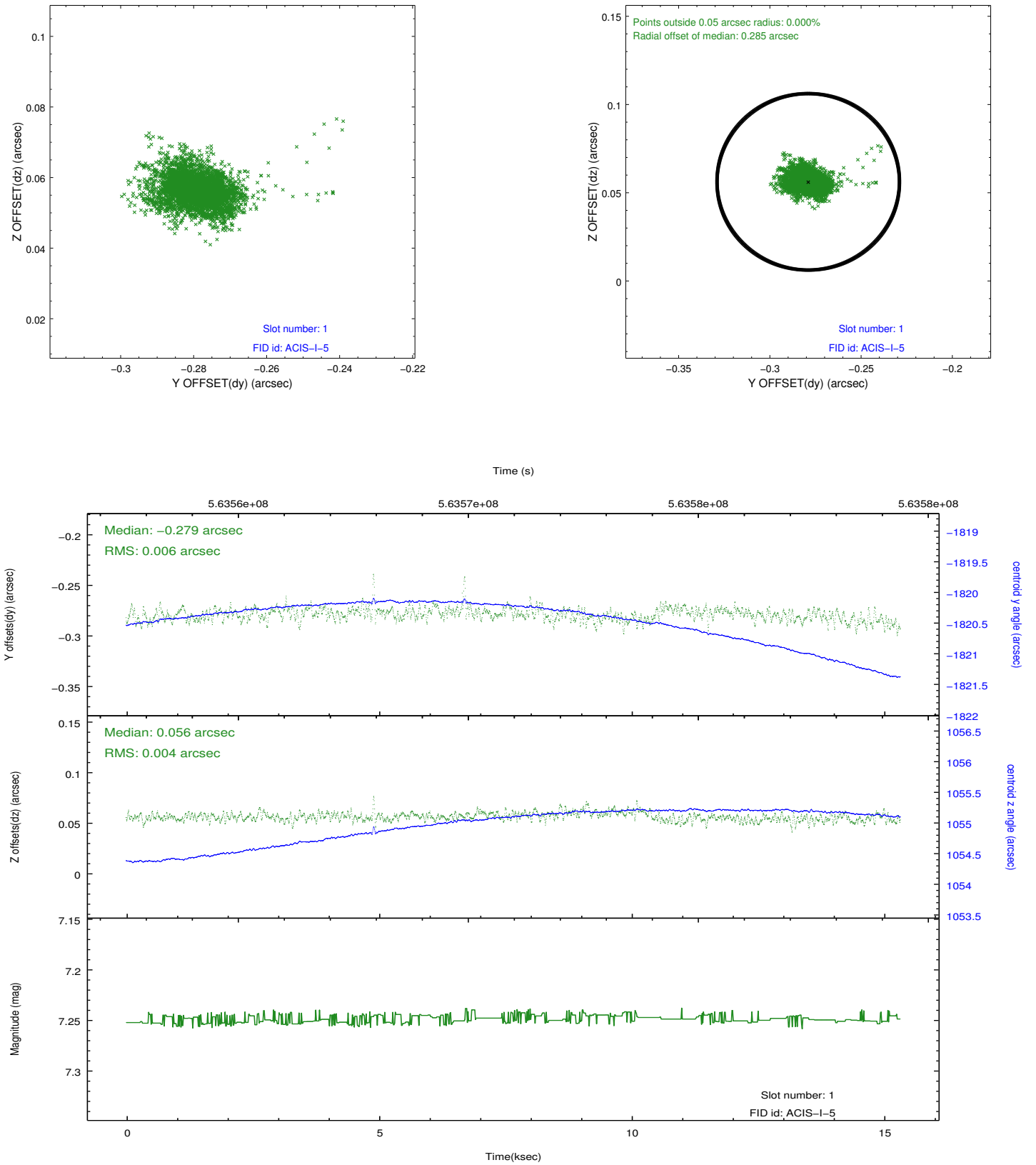


2.5 FID Slots

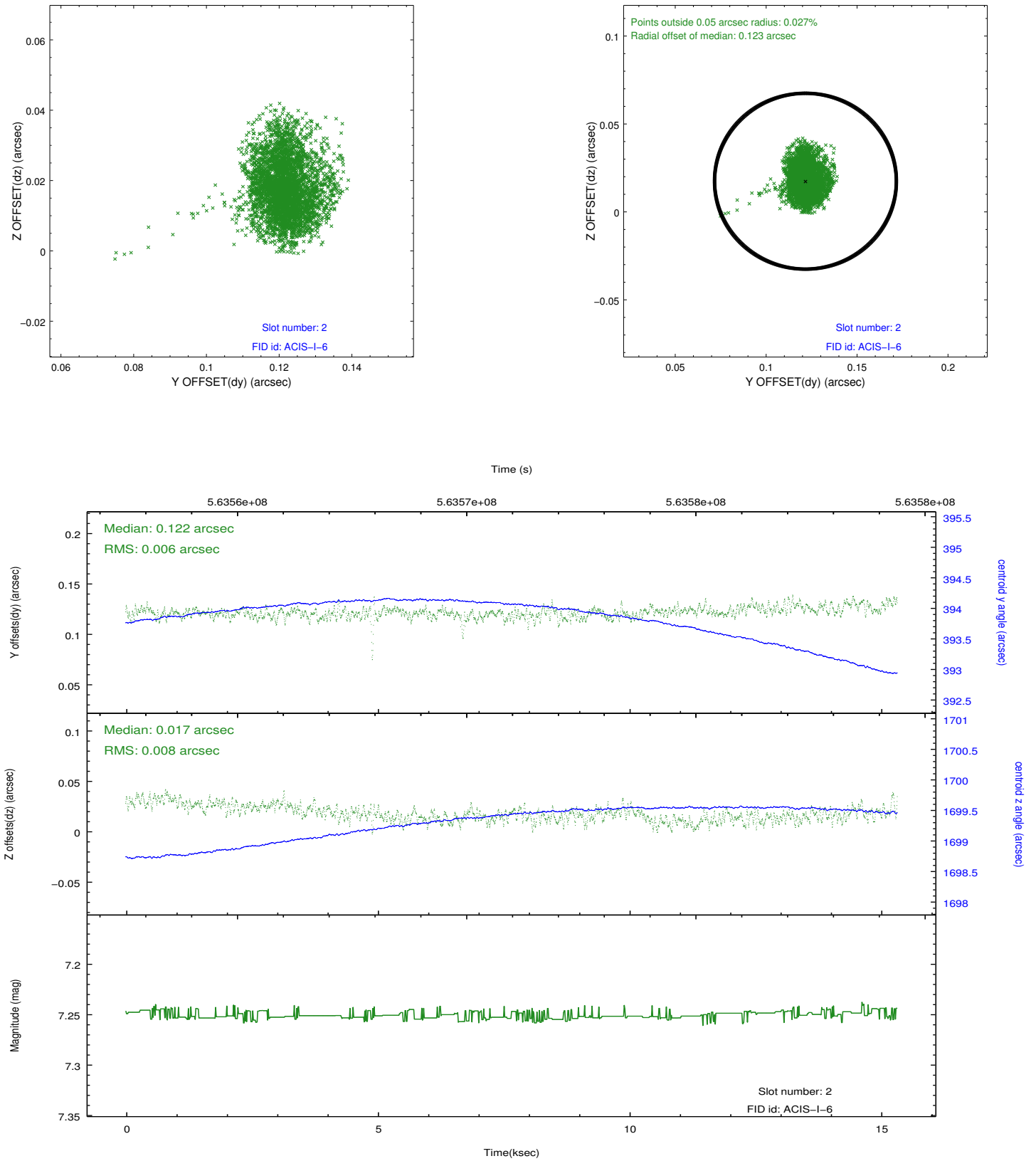
2.5.1 Slot 0



2.5.2 Slot 1



2.5.3 Slot 2



A Summary

A.1 Status

V&V Scientist	Joy Nichols
V&V Date (YYYY-MM-DD)	2015.11.12
V&V Edition	1
V&V Disposition and Status	OK
V&V Charge Time	14.965076703191

A.2 Comments