

V&V Reference Report

L2 ASCDS Version : 10.3

Observation 16340 - L2 Version 1
Chandra X-Ray Center

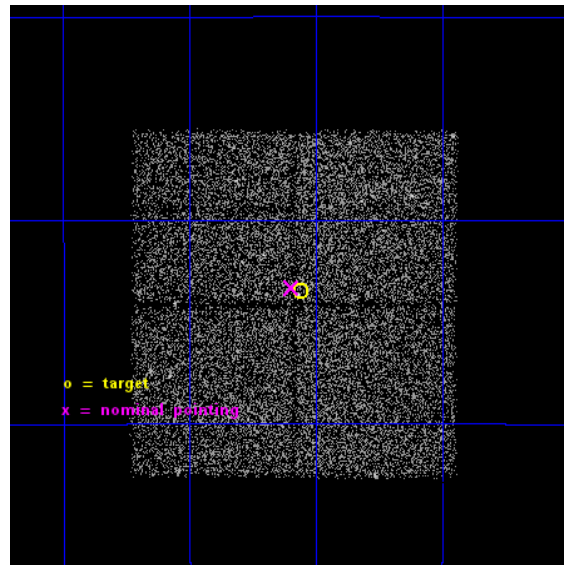
L2 Processing Date : Nov 24 2014

Contents

1	Front	2
2	OBI	3
2.1	OBI	3
2.1.1	Images	3
2.1.2	Bias	3
2.1.3	Parameters	4
2.1.4	Events	4
2.2	Compared Parameters	5
2.3	Aspect	6
2.4	Star Slots	9
2.4.1	Slot 3	9
2.4.2	Slot 4	10
2.4.3	Slot 5	11
2.4.4	Slot 6	12
2.4.5	Slot 7	13
2.5	FID Slots	14
2.5.1	Slot 0	14
2.5.2	Slot 1	15
2.5.3	Slot 2	16
A	Summary	17
A.1	Status	17
A.2	Comments	17

1 Front

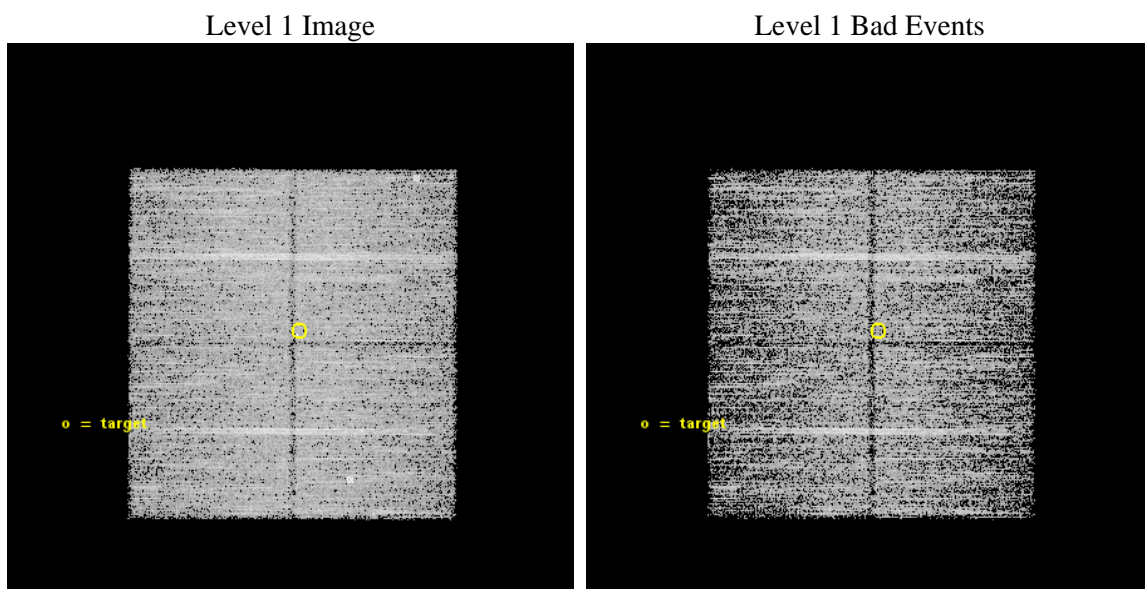
seq_num	901125	Sequence number
obs_id	16340	Observation id
title	A Wide-Field Survey in the Chandra Deep Field-South Region: A Combined GTO + GO Approach	Proposal title
observer	Professor Gordon Garmire	Principal investigator
object	CDFS-WF17	Source name
dtcycle	0	
cycle	P	events from which exps? Prim/Second/Both
ra_targ	53.265417	Observer's specified target RA [deg]
dec_targ	-28.224472	Observer's specified target Dec [deg]
ra_nom	53.274266659603	Nominal RA [deg]
dec_nom	-28.221957534533	Nominal Dec [deg]
roll_nom	0.2129096163527	Nominal Roll [deg]
revision	1	Processing version of data
ontime	15087.591530502	Sum of GTIs [s]
livetime	14890.461039833	Livetime [s]
ontime0	15087.468410492	Sum of GTIs [s]
ontime1	15084.368400156	Sum of GTIs [s]
ontime2	15087.550490499	Sum of GTIs [s]
ontime3	15087.591530502	Sum of GTIs [s]
l2events	27513	Number of level 2 events



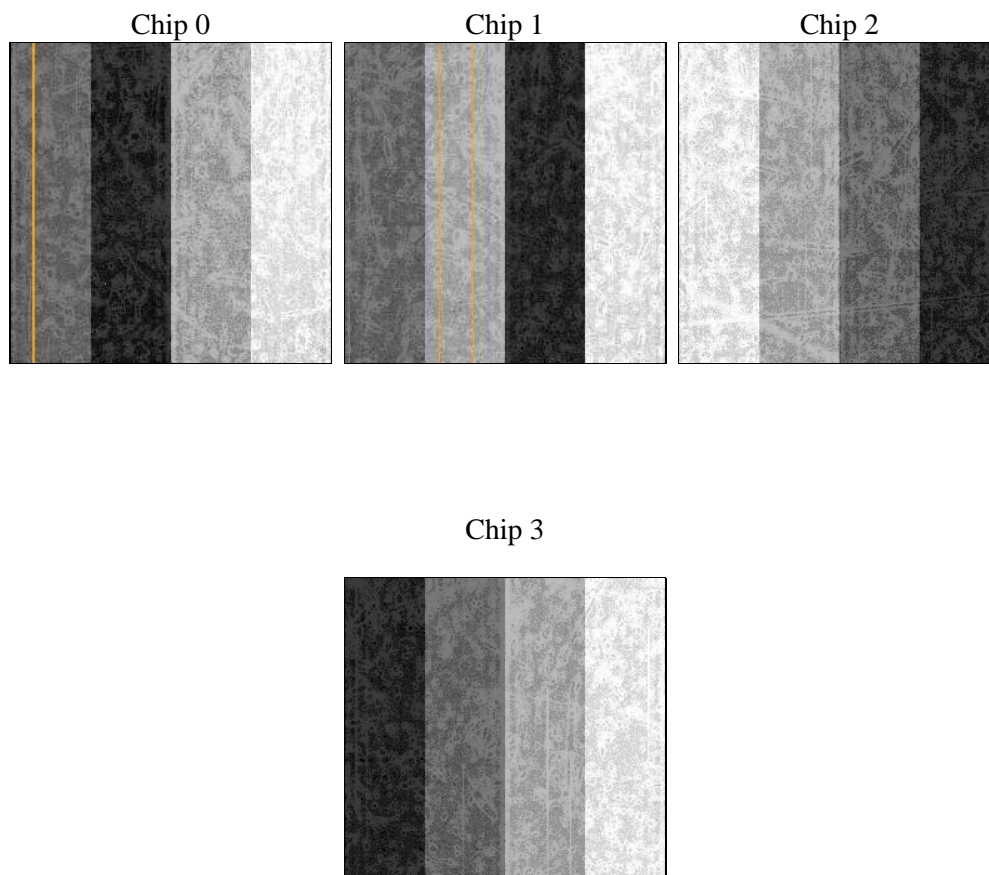
2 OBI

2.1 OBI

2.1.1 Images



2.1.2 Bias



2.1.3 Parameters

obi_num	0	Obi number	sched_exp_time	15000.000000	[s] Scheduled observation exposure time
ascdsver	10.3	Processing system revision	ontime	15087.591530502	Sum of GTIs [s]
caldsver	4.6.4	 	ontime0	15087.468410492	Sum of GTIs [s]
date	2014-11-25T03:04:49	Date and time of file creation	ontime1	15084.368400156	Sum of GTIs [s]
revision	1	Processing version of data	ontime2	15087.550490499	Sum of GTIs [s]
			ontime3	15087.591530502	Sum of GTIs [s]
			l1events	284132	Number of level 1 events

2.1.4 Events

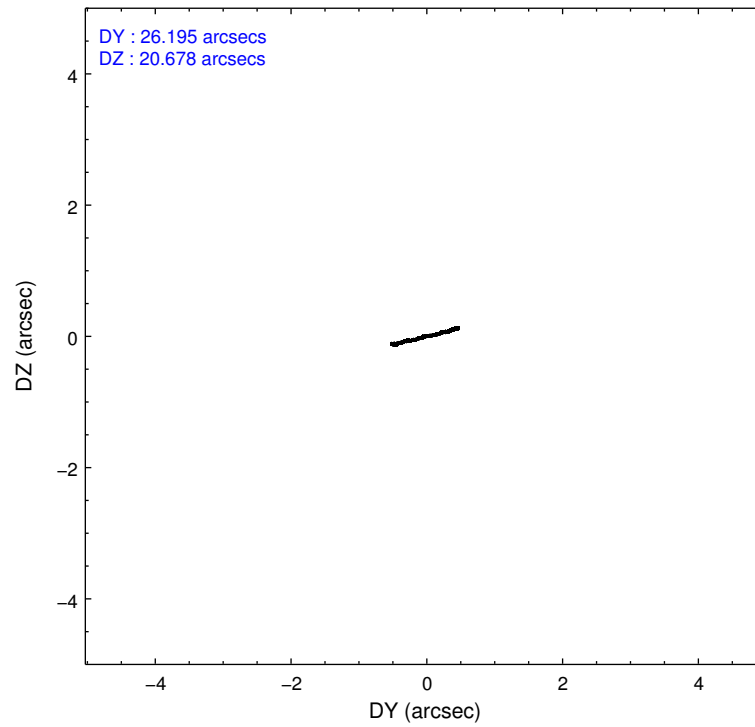
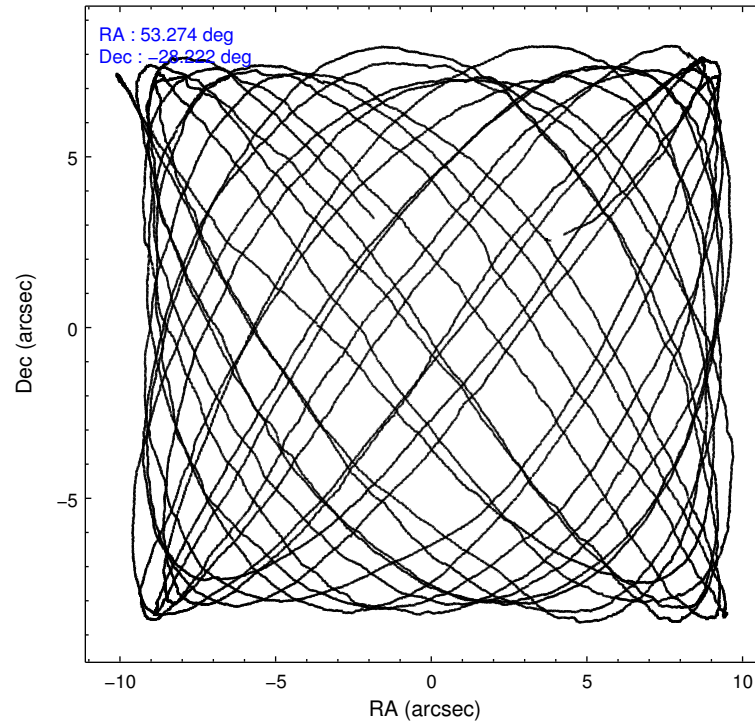
	ccd 0	ccd 1	ccd 2	ccd 3
level 1 events	67305	70070	74144	72613
rejected events	58881	60965	66107	64236
rejected %	87%	87%	89%	88%

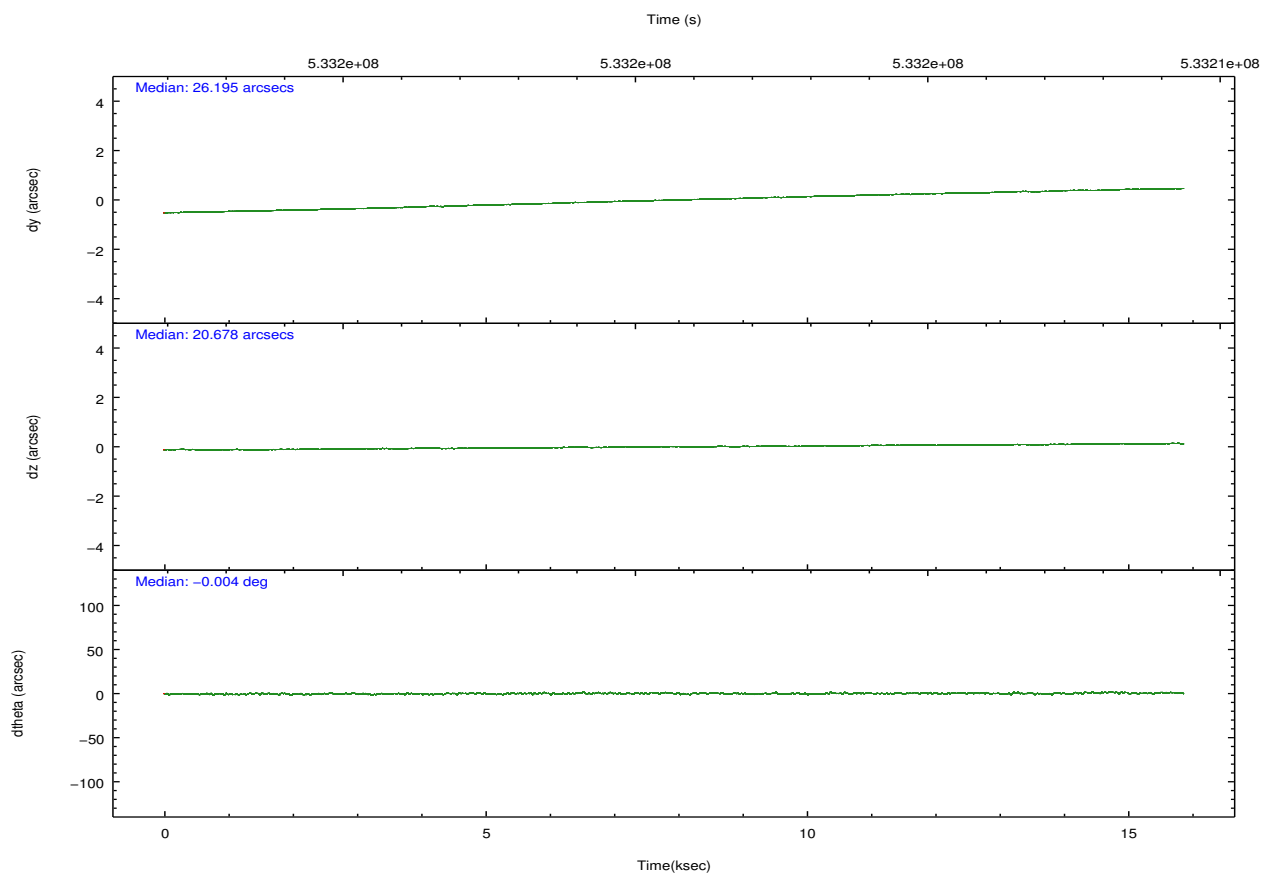
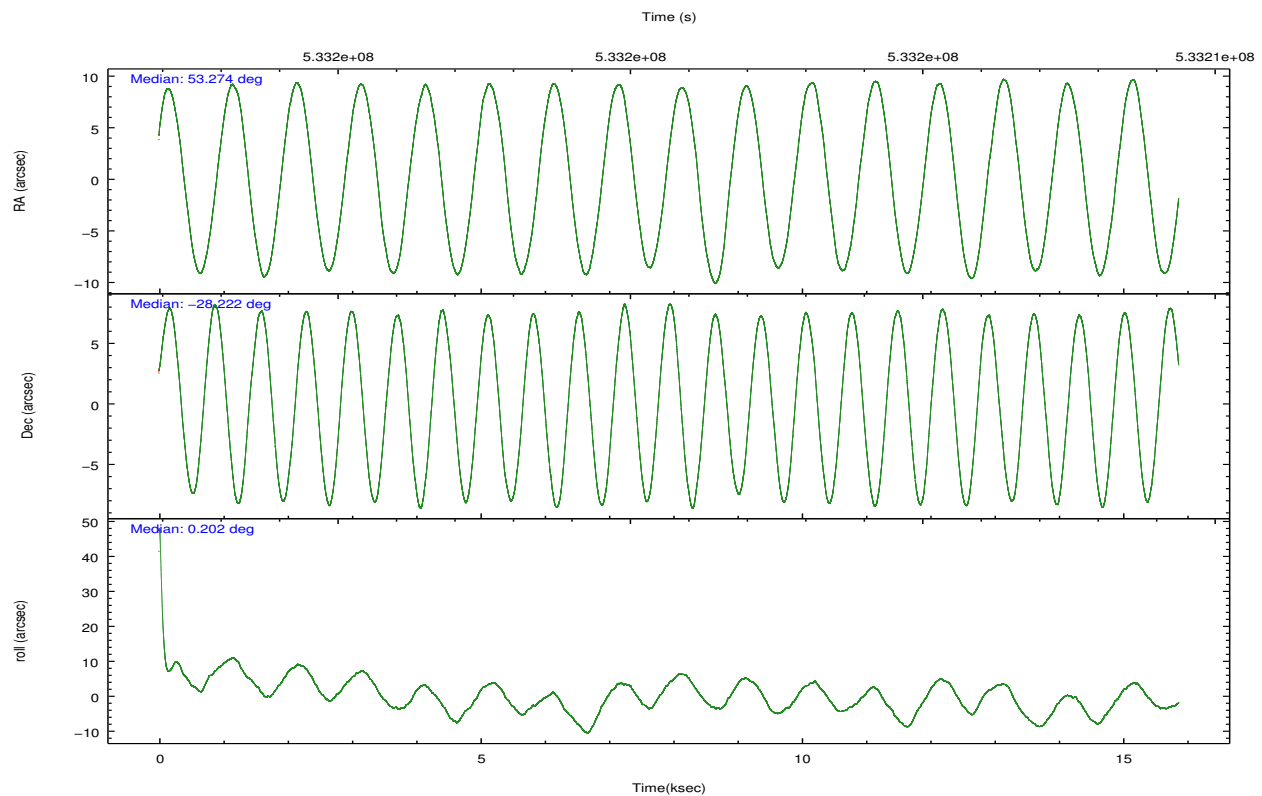
	ccd 0	ccd 1	ccd 2	ccd 3
grade 0 events	3060	3459	2991	2899
	4%	4%	4%	3%
grade 1 events	32	39	46	41
	0%	0%	0%	0%
grade 2 events	1995	1979	1908	2125
	2%	2%	2%	2%
grade 3 events	909	880	817	892
	1%	1%	1%	1%
grade 4 events	821	878	829	823
	1%	1%	1%	1%
grade 5 events	2827	3092	2687	3337
	4%	4%	3%	4%
grade 6 events	1643	1914	1492	1641
	2%	2%	2%	2%
grade 7 events	56018	57829	63374	60855
	83%	82%	85%	83%

2.2 Compared Parameters

Parameter	Planned	Actual	Parameter	Planned	Actual
Instrument	ACIS	ACIS	Obspar format version number	7	7
Detector	ACIS-0123	ACIS-0123	Obspar file type	PREDICTED	ACTUAL
Grating	NONE	NONE	Obspar update status	NONE	UPDATED
Data mode	VFAINT	VFAINT	Number of optional ACIS chips dropped	0	0
Observation mode	POINTING	POINTING	On-chip summing requested	N	N
[deg] Pointing RA	53.247261	53.27426665960326	Subarray requested	NONE	NONE
[deg] Pointing Dec	-28.235976	-28.2219575345332	Alternating exposures requested	N	N
[deg] Pointing Roll	359.991410	0.2129096163526951	[s] Primary exposure time	0.000000	3.1
[mm] SIM focus pos	-0.782348	-0.7809083437167272			
[mm] SIM defocus	0	0.001439871863259334			
[mm] SIM translation stage pos	-233.592463	-233.5874344608287			
[mm] SIM translation stage offset	0	-0.005018542100998502			
[s] Observation start time (MET)	533193590.184000	533192371.41998			
Observation start date	2014-11-24T05:18:43	2014-11-24T04:59:31			
[s] Observation end time (MET)	533208590.184000	533208724.27089			
Observation end date	2014-11-24T09:28:43	2014-11-24T09:32:04			
Read mode	TIMED	TIMED			

2.3 Aspect



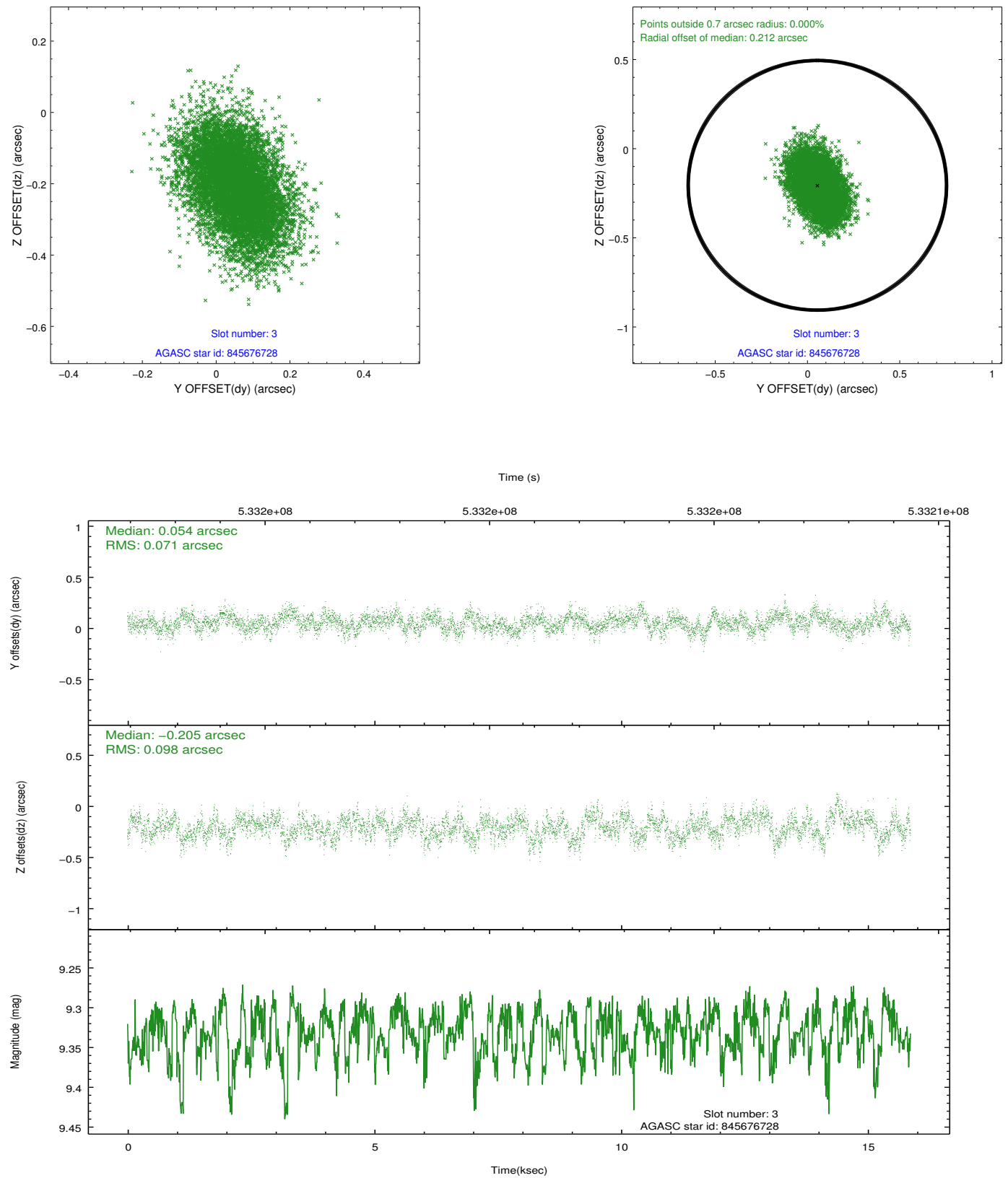


Slot Statistics

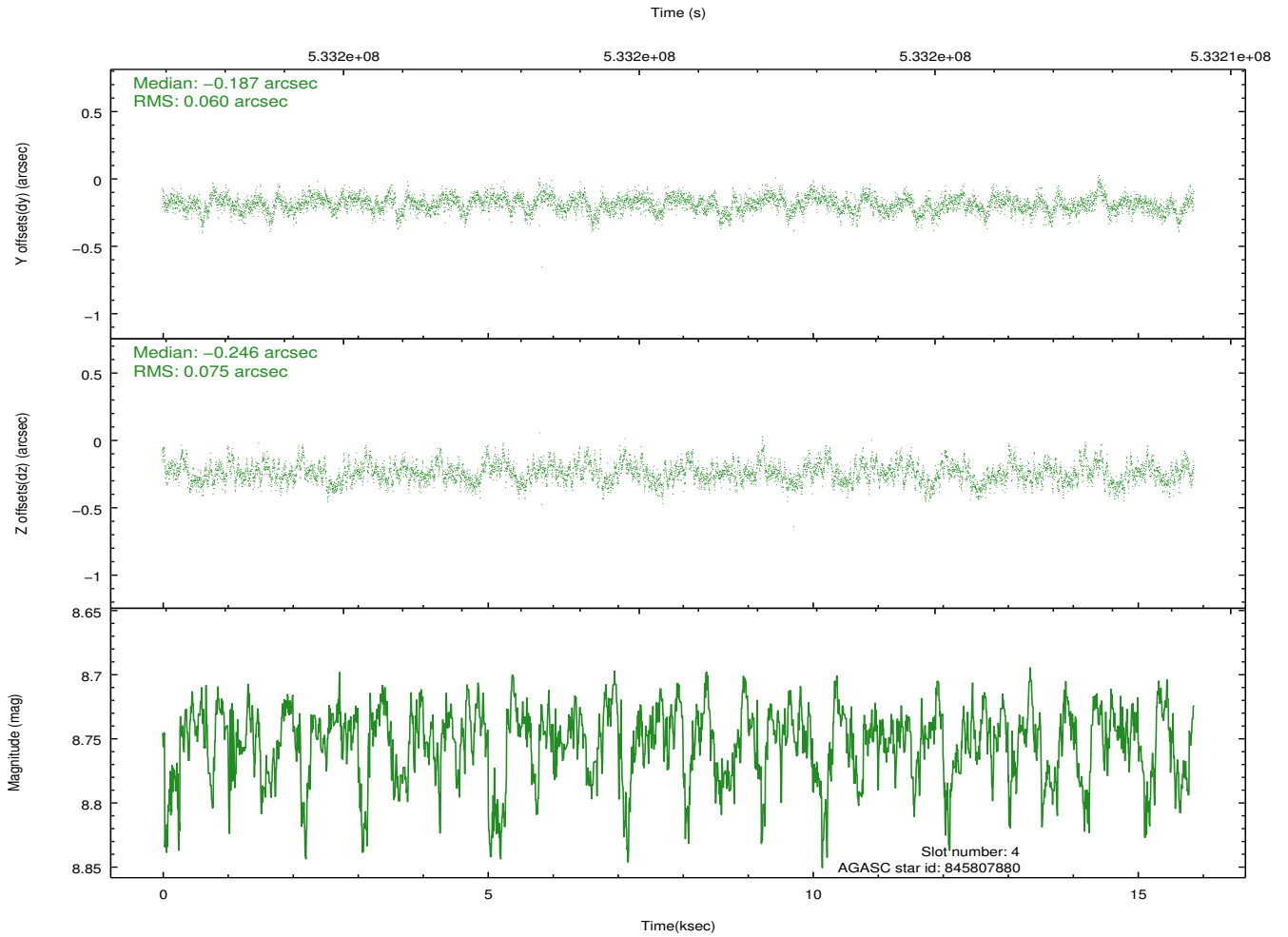
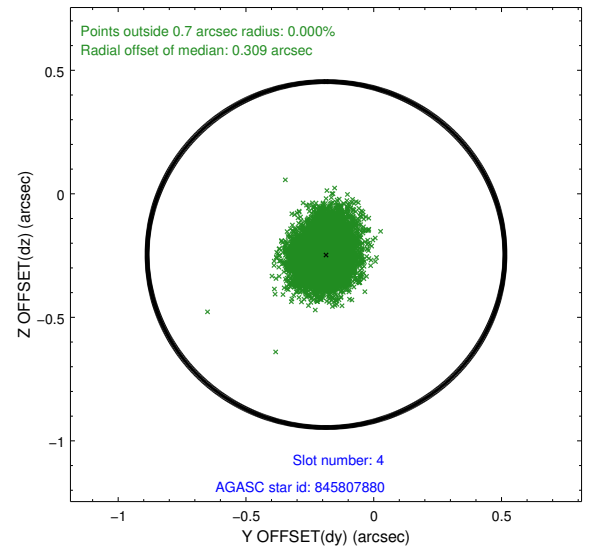
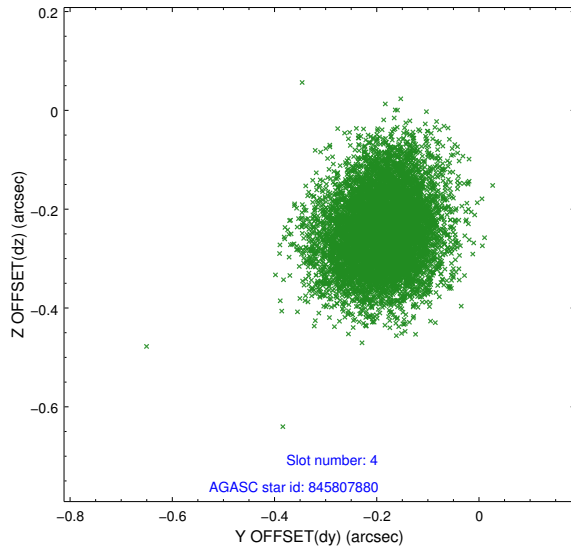
slot	status	used	id	mag	n_pts	med_dy	med_dz	dr1	dr2	ra	dec	mean_y	mean_z
0	FID		ACIS-I-1	7.21	3871	-0.036	-0.037	0.009	0.015	0.000000	0.000000	912.97	-844.42
1	FID		ACIS-I-4	7.18	3871	0.313	0.067	0.017	0.024	0.000000	0.000000	2133.45	1055.39
2	FID		ACIS-I-5	7.19	3871	-0.376	0.041	0.013	0.023	0.000000	0.000000	-1835.08	1053.40
3	GUIDE	used	845676728	9.33	7733	0.054	-0.205	0.128	0.212	52.877179	-27.664318	-1180.31	2055.58
4	GUIDE	used	845807880	8.75	7737	-0.187	-0.246	0.101	0.165	53.382027	-27.886093	428.44	1259.50
5	GUIDE	used	845814592	9.02	7736	-0.008	-0.136	0.130	0.224	53.853010	-28.336603	1921.87	-368.41
6	GUIDE	used	845816344	9.22	7670	0.212	0.601	0.162	0.254	53.137522	-28.675689	-345.24	-1582.67
7	GUIDE	used	845816576	9.25	7731	-0.054	-0.001	0.138	0.216	53.727820	-28.842154	1516.40	-2185.19

2.4 Star Slots

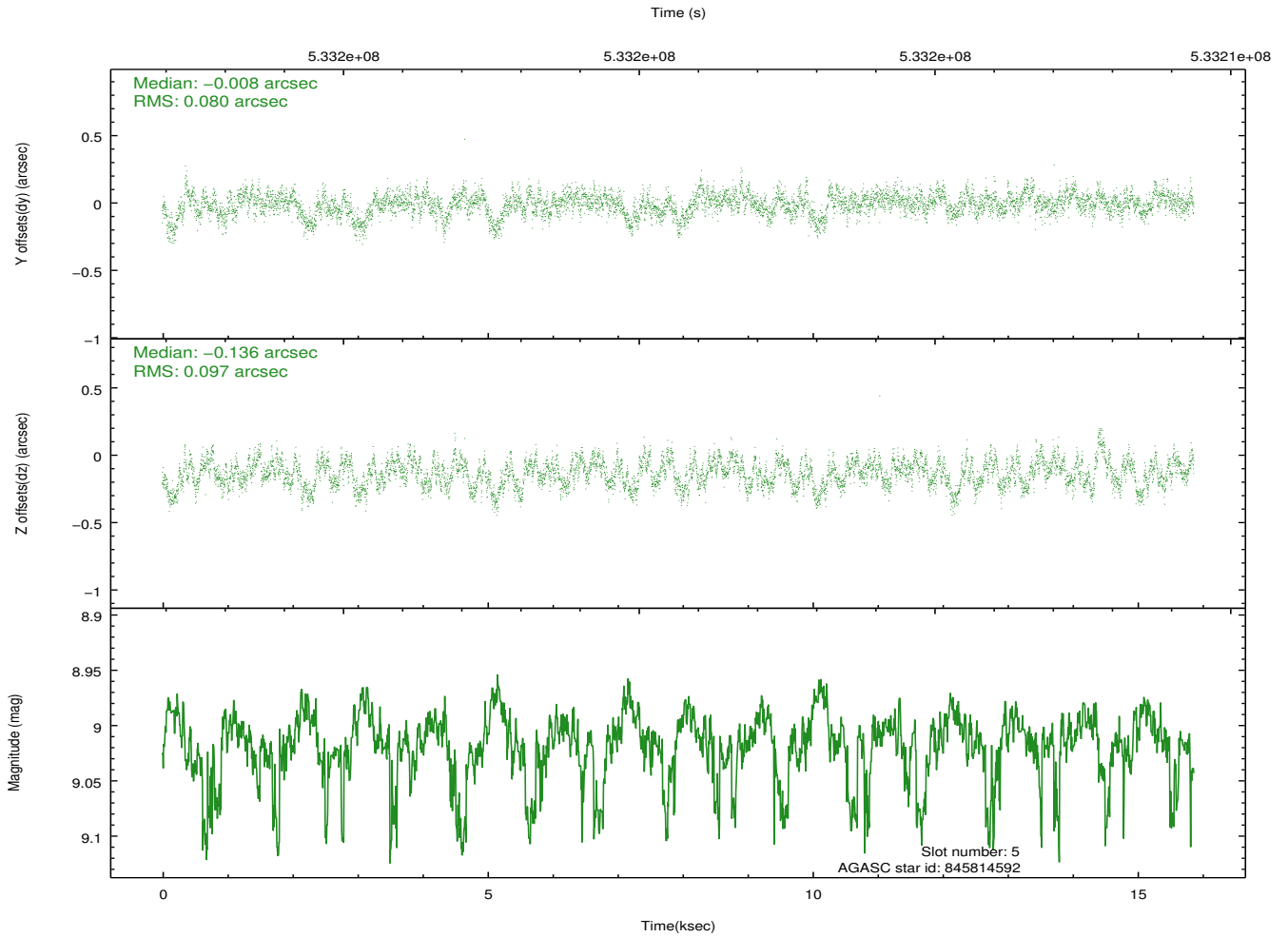
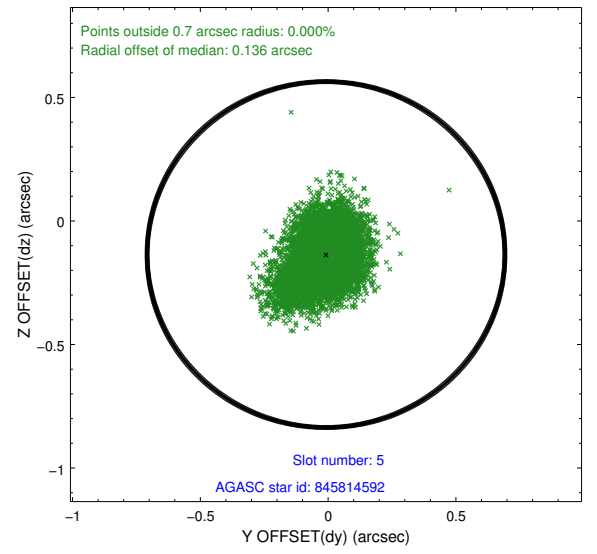
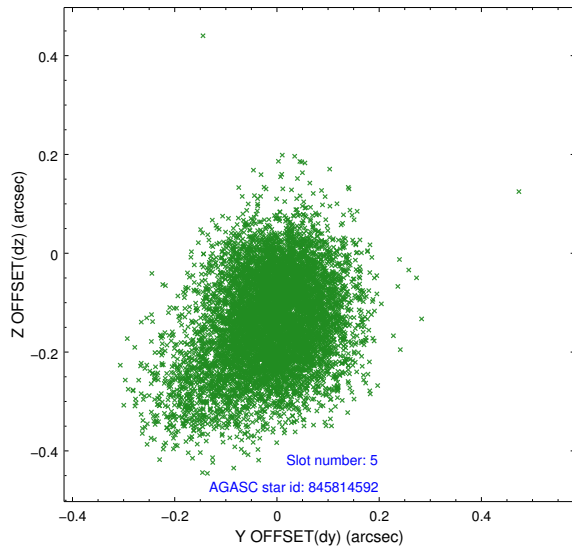
2.4.1 Slot 3



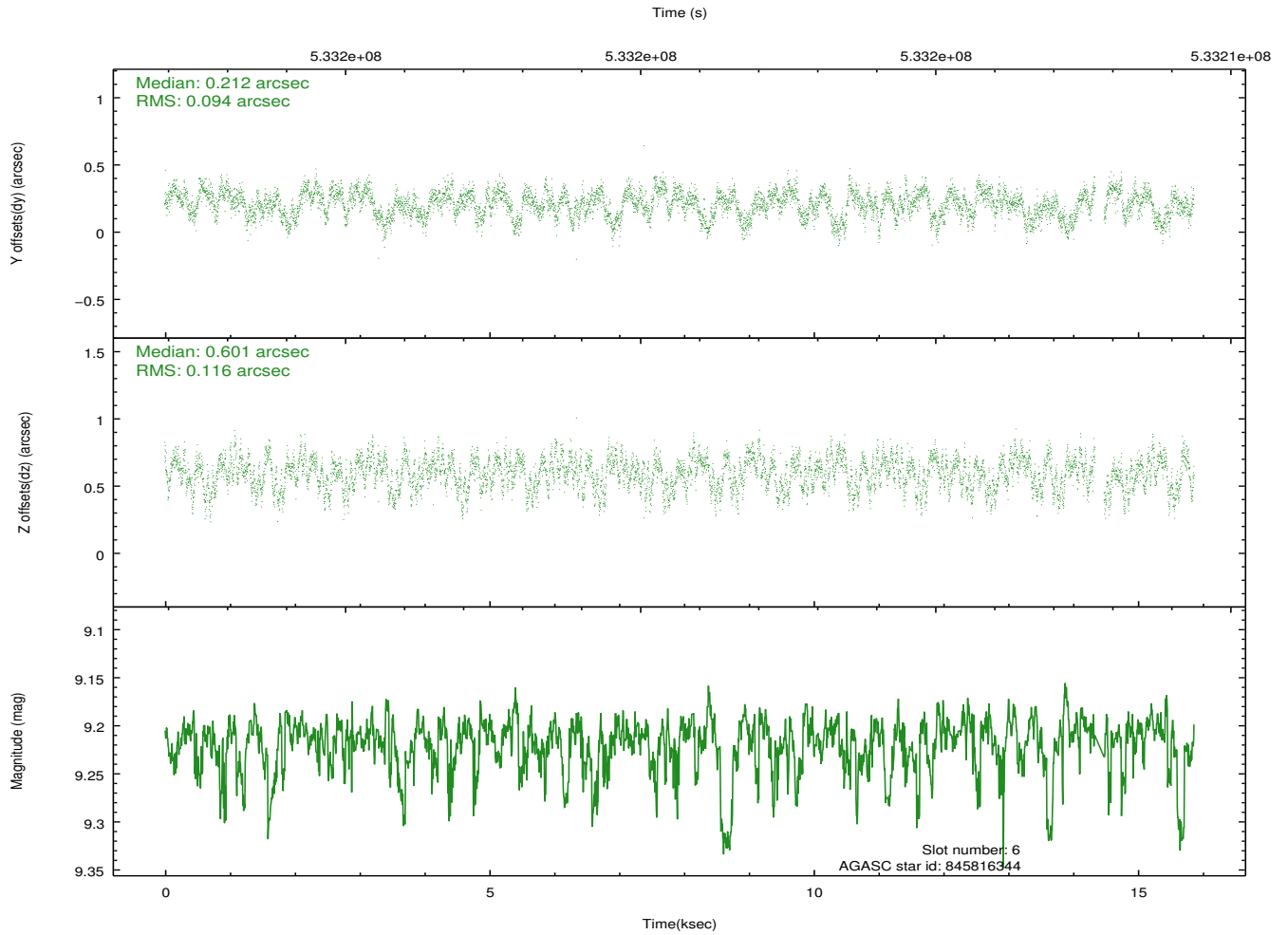
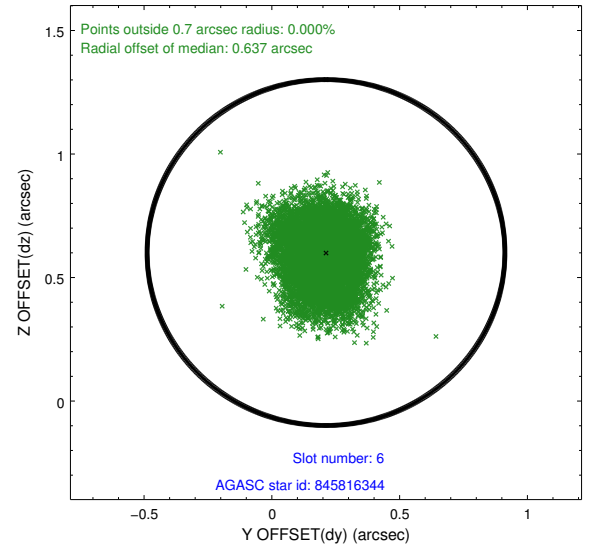
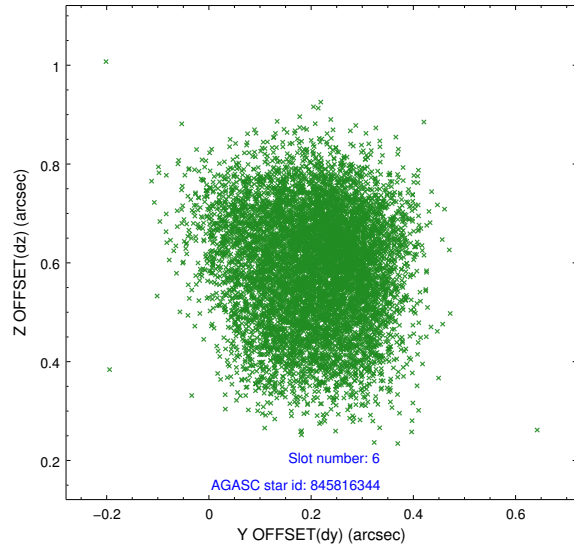
2.4.2 Slot 4



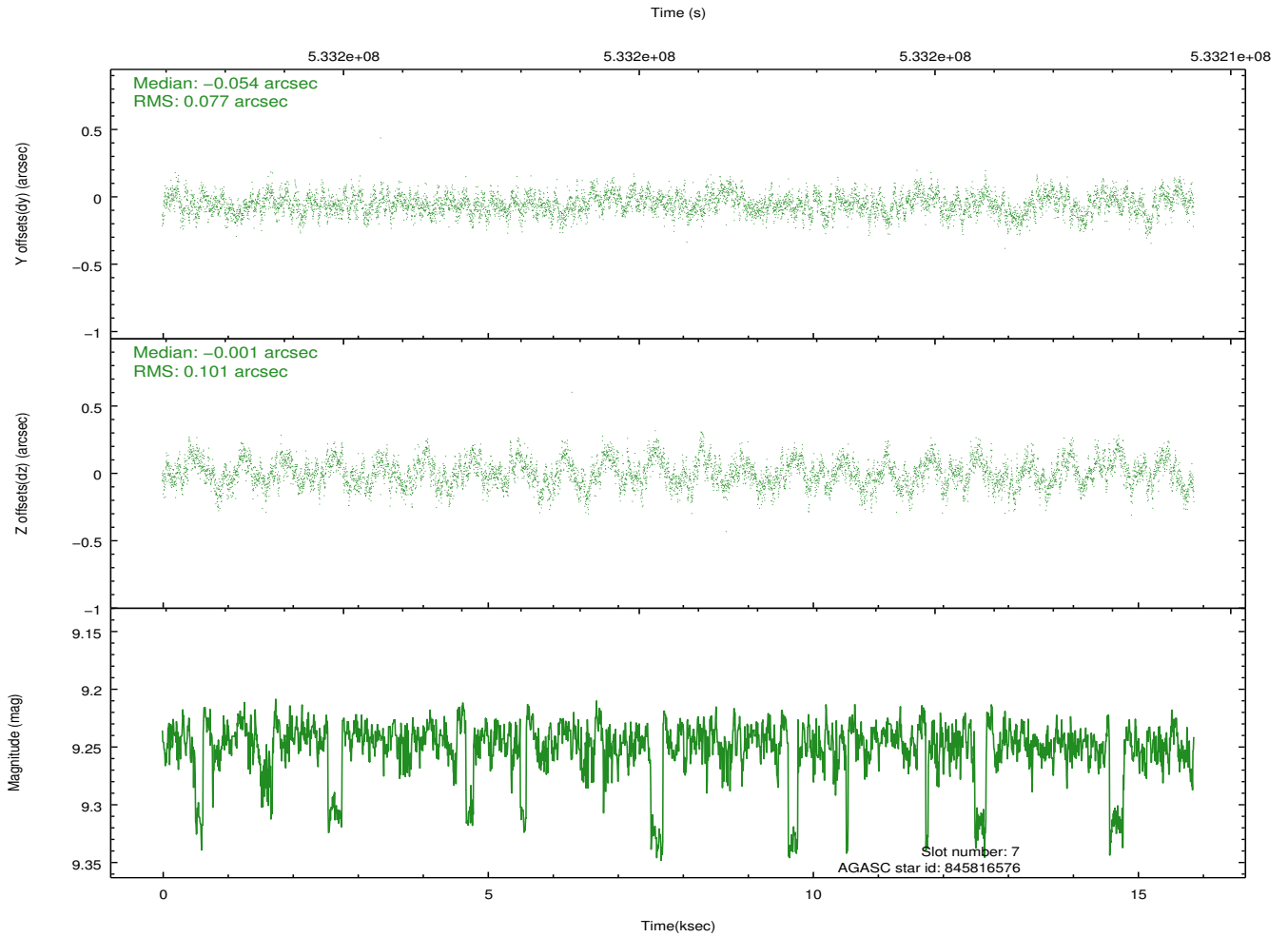
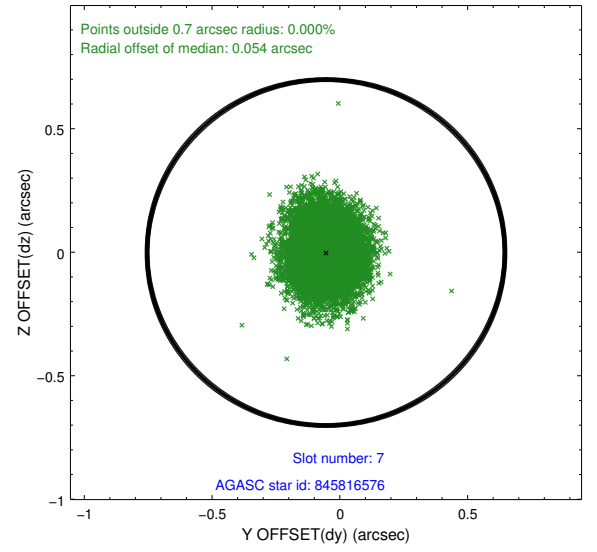
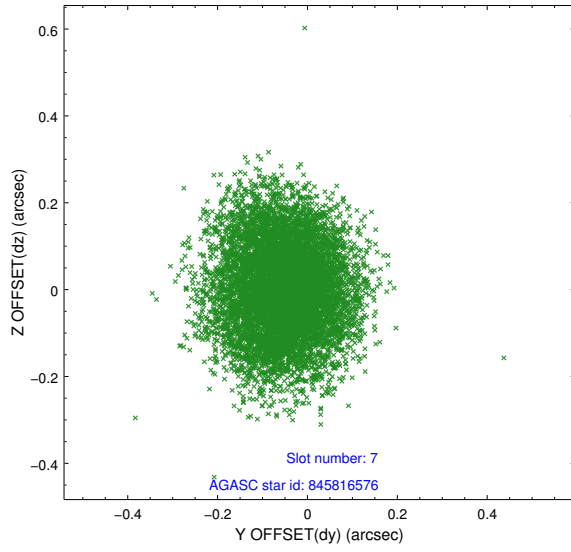
2.4.3 Slot 5



2.4.4 Slot 6

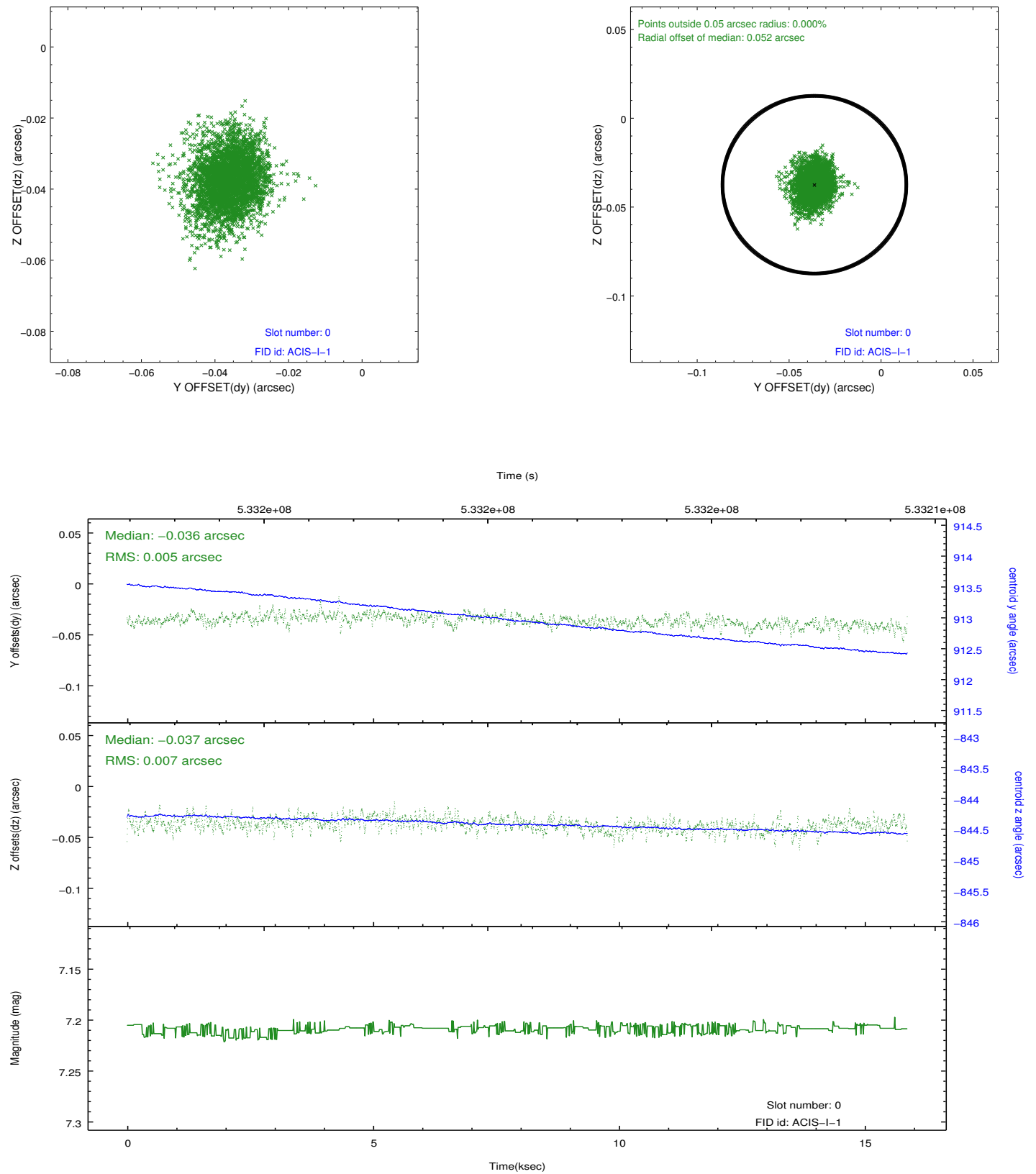


2.4.5 Slot 7

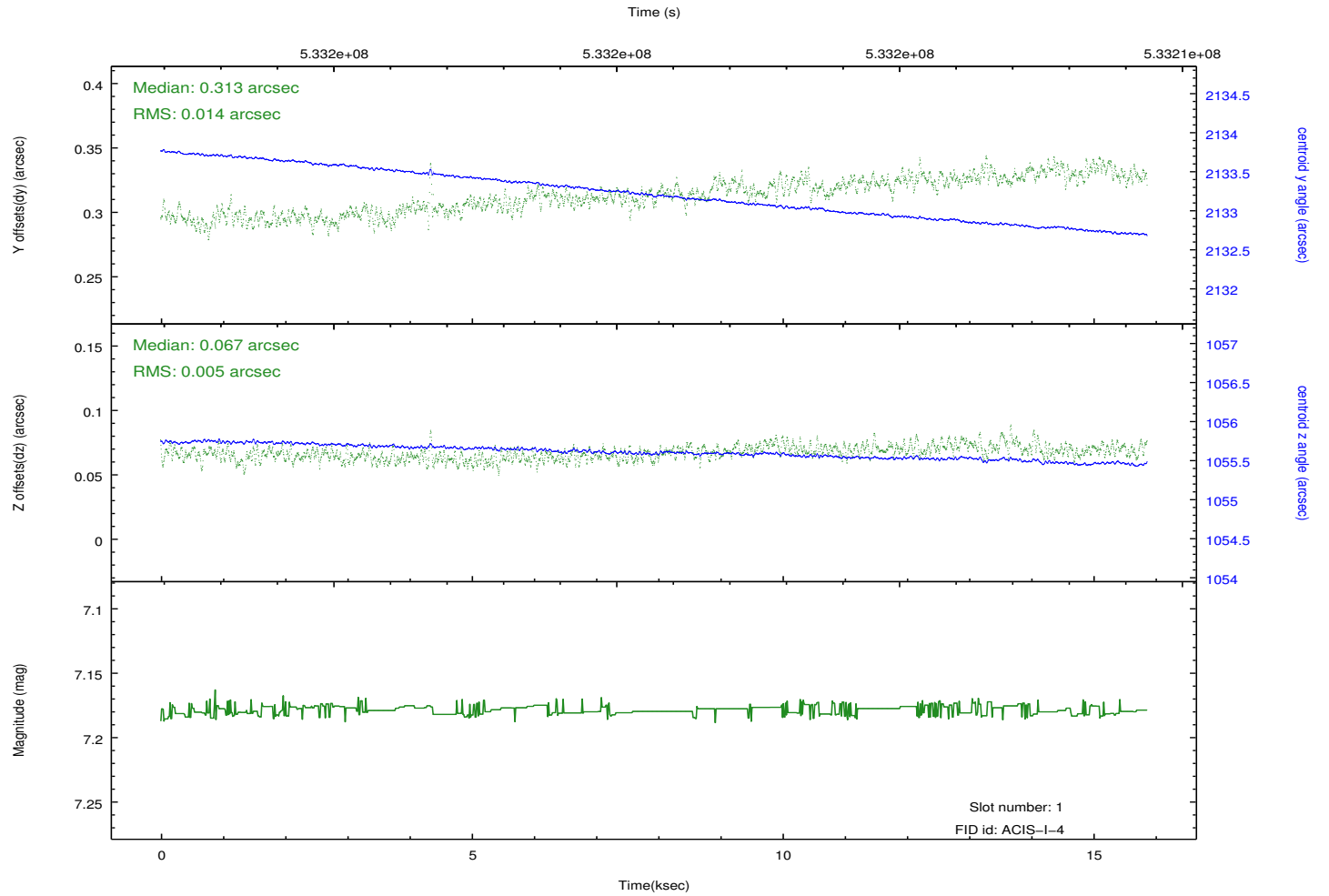
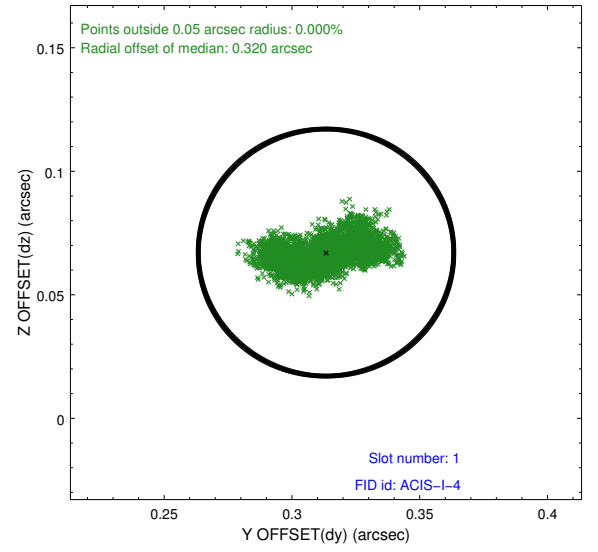
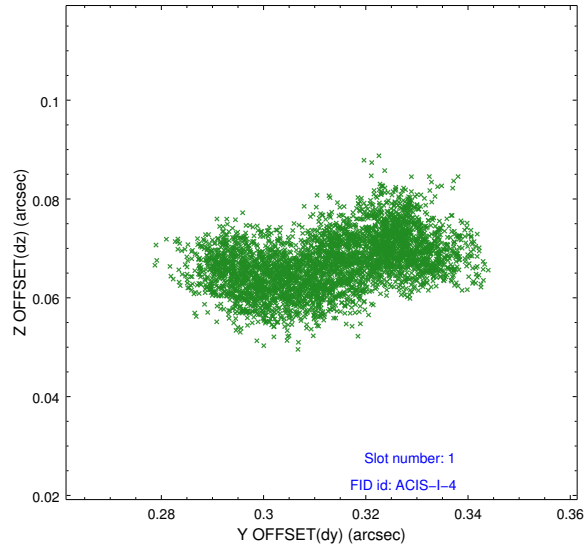


2.5 FID Slots

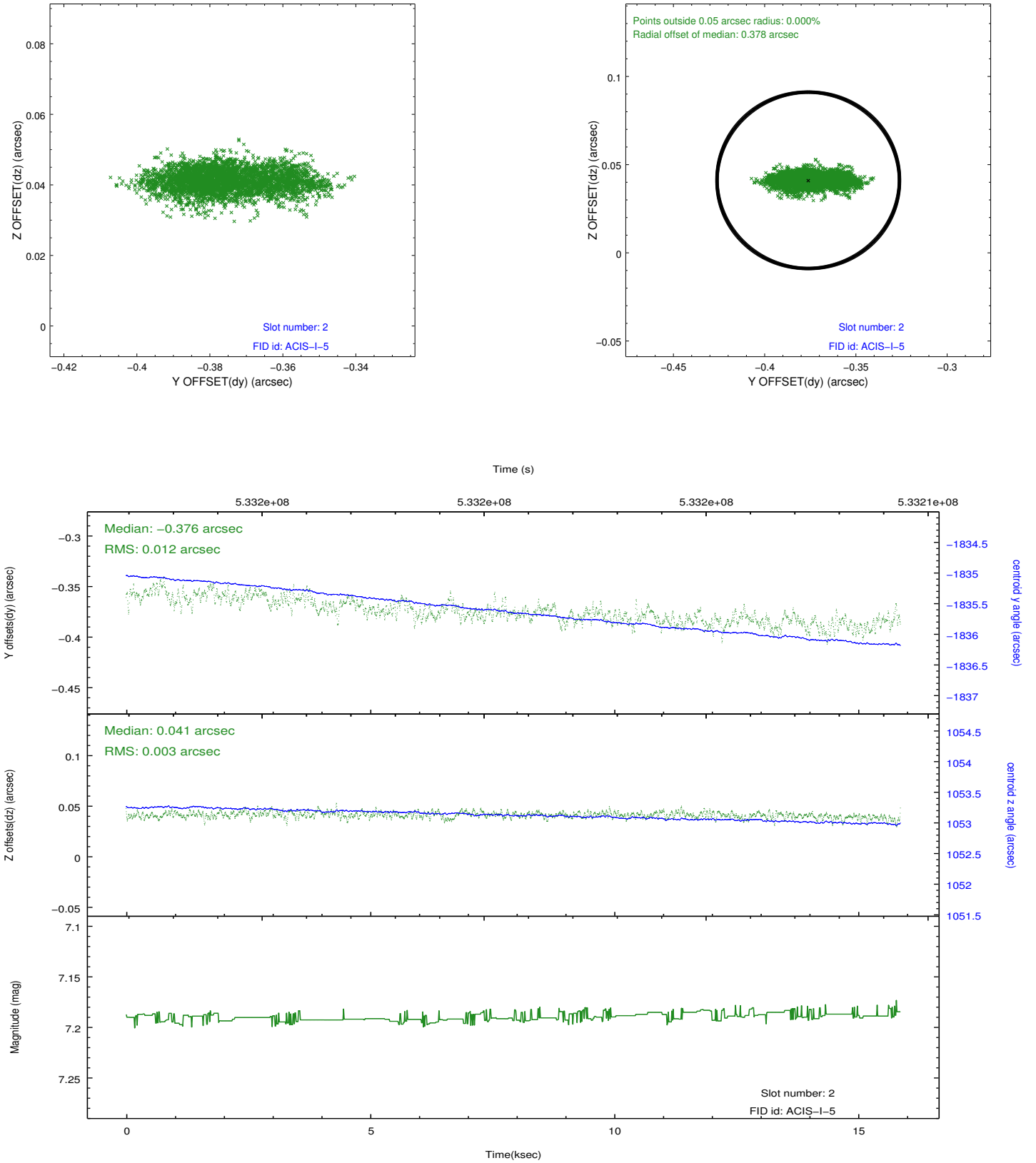
2.5.1 Slot 0



2.5.2 Slot 1



2.5.3 Slot 2



A Summary

A.1 Status

V&V Scientist	Jen Lauer
V&V Date (YYYY-MM-DD)	2014.11.25
V&V Edition	1
V&V Disposition and Status	OK
V&V Charge Time	15.087591530502

A.2 Comments

Roll preference met.