

V&V Reference Report

L2 ASCDS Version : 10.2.4

Observation 16202 - L2 Version 1
Chandra X-Ray Center

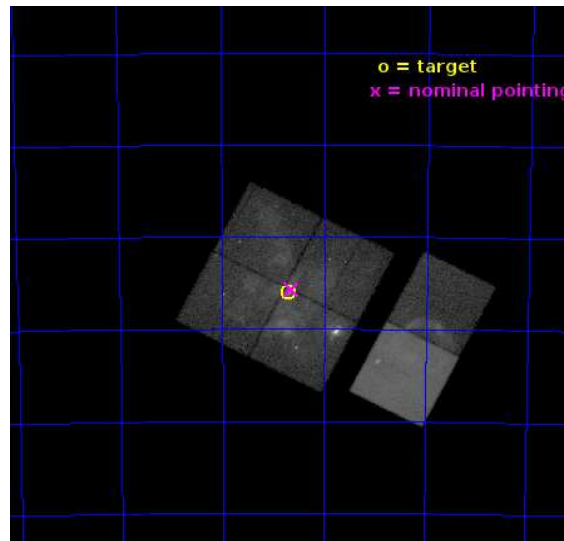
L2 Processing Date : Aug 21 2014

Contents

1	Front	2
2	OBI	3
2.1	OBI	3
2.1.1	Images	3
2.1.2	Bias	3
2.1.3	Parameters	4
2.1.4	Events	4
2.2	Compared Parameters	5
2.3	Aspect	6
2.4	Star Slots	9
2.4.1	Slot 3	9
2.4.2	Slot 4	10
2.4.3	Slot 5	11
2.4.4	Slot 6	12
2.4.5	Slot 7	13
2.5	FID Slots	14
2.5.1	Slot 0	14
2.5.2	Slot 1	15
2.5.3	Slot 2	16
A	Summary	17
A.1	Status	17
A.2	Comments	17

1 Front

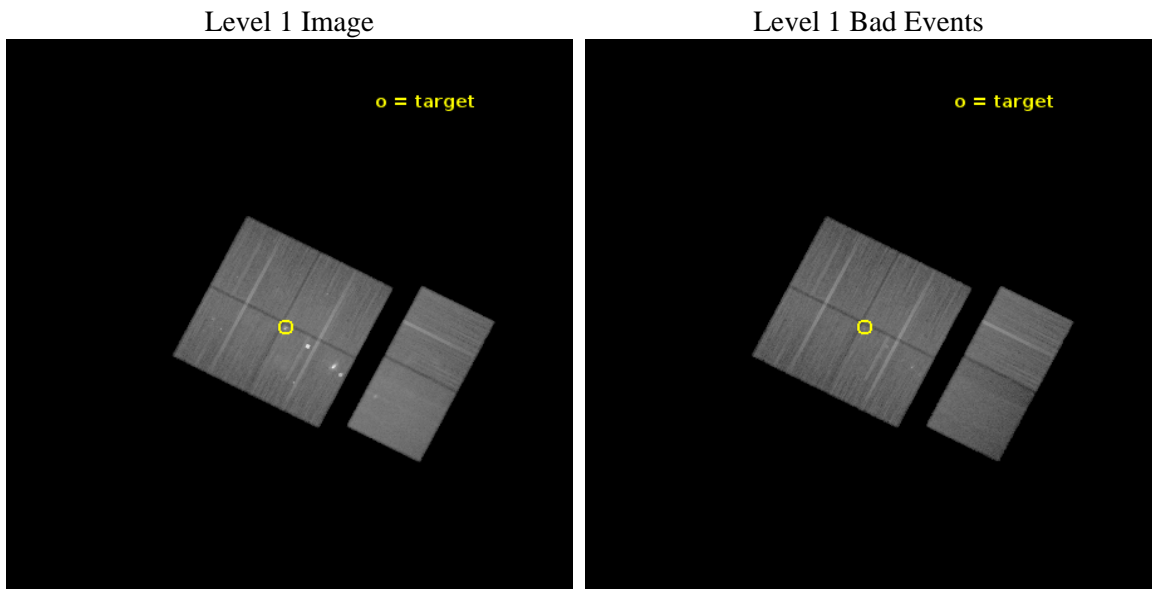
seq_num	901116	Sequence number
obs_id	16202	Observation id
title	The Tarantula -- Revealed by X-rays (T-ReX): A Definitive Chandra Investigation of 30 Doradus	Proposal title
observer	Dr. Leisa Townsley	Principal investigator
object	30 Doradus	Source name
dtcycle	0	
cycle	P	events from which exps? Prim/Second/Both
ra_targ	84.676667	Observer's specified target RA [deg]
dec_targ	-69.100806	Observer's specified target Dec [deg]
ra_nom	84.660581018929	Nominal RA [deg]
dec_nom	-69.094970715101	Nominal Dec [deg]
roll_nom	117.19365490673	Nominal Roll [deg]
revision	1	Processing version of data
ontime	65963.35065639	Sum of GTIs [s]
livetime	65128.082992018	Livetime [s]
ontime0	65943.781404197	Sum of GTIs [s]
ontime1	65969.750557125	Sum of GTIs [s]
ontime2	65963.309566617	Sum of GTIs [s]
ontime3	65963.35065639	Sum of GTIs [s]
ontime6	65969.914717138	Sum of GTIs [s]
ontime7	65969.873677135	Sum of GTIs [s]
l2events	454447	Number of level 2 events



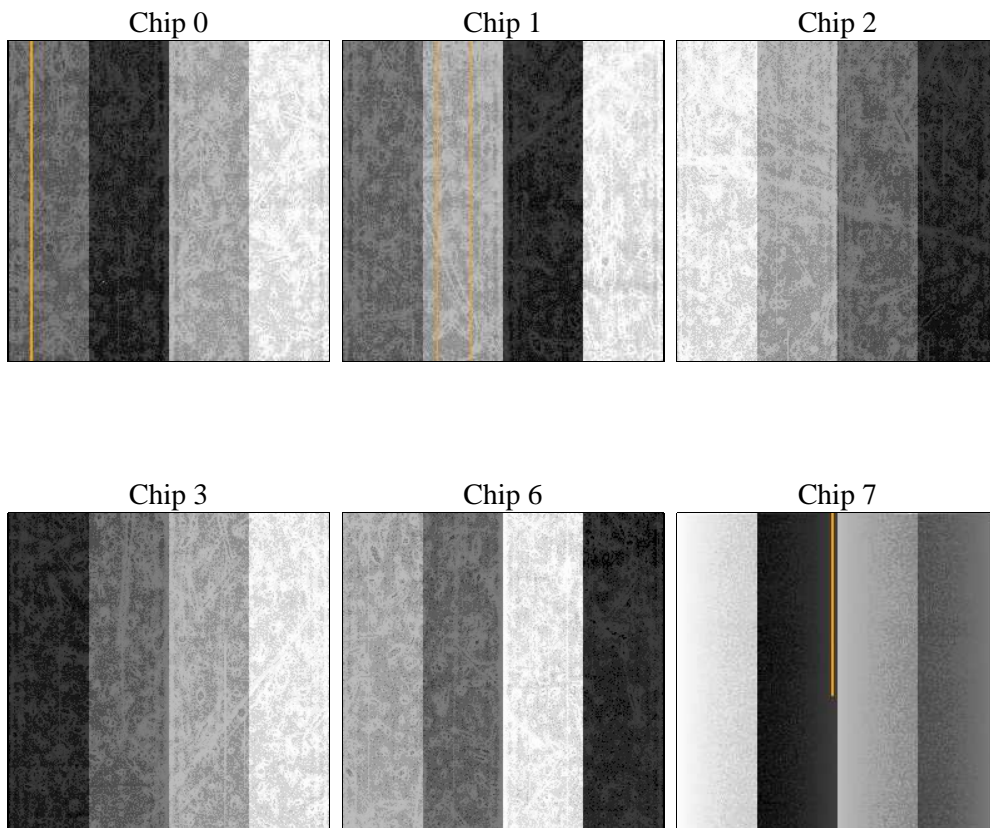
2 OBI

2.1 OBI

2.1.1 Images



2.1.2 Bias



2.1.3 Parameters

obi_num	0	Obi number	sched_exp_time	66000.000000	[s] Scheduled observation exposure time
ascdsver	10.2.4	Processing system revision	ontime	65963.35065639	Sum of GTIs [s]
caldsver	4.6.2	 	ontime0	65943.781404197	Sum of GTIs [s]
date	2014-08-21T06:27:37	Date and time of file creation	ontime1	65969.750557125	Sum of GTIs [s]
revision	1	Processing version of data	ontime2	65963.309566617	Sum of GTIs [s]
			ontime3	65963.35065639	Sum of GTIs [s]
			ontime6	65969.914717138	Sum of GTIs [s]
			ontime7	65969.873677135	Sum of GTIs [s]
			l1events	2000885	Number of level 1 events

2.1.4 Events

	ccd 0	ccd 1	ccd 2	ccd 3	ccd 6	ccd 7		ccd 0	ccd 1	ccd 2	ccd 3	ccd 6	ccd 7
level 1 events	280313	287640	322582	411856	319712	378782	grade 0 events	24532	25157	29702	78839	20795	22523
rejected events	231452	236203	268571	260008	273522	189110		8%	8%	9%	19%	6%	5%
rejected %	82%	82%	83%	63%	85%	49%	grade 1 events	182	204	259	727	222	584
								0%	0%	0%	0%	0%	0%
							grade 2 events	9976	10029	10147	53426	9496	42126
								3%	3%	3%	12%	2%	11%
							grade 3 events	3937	4015	3763	5787	3880	17278
								1%	1%	1%	1%	1%	4%
							grade 4 events	3718	4113	3862	5583	3892	17125
								1%	1%	1%	1%	1%	4%
							grade 5 events	12270	13259	11462	14547	14006	38174
								4%	4%	3%	3%	4%	10%
							grade 6 events	6701	8127	6538	8221	8131	90629
								2%	2%	2%	1%	2%	23%
							grade 7 events	218997	222736	256849	244726	259290	150343
								78%	77%	79%	59%	81%	39%

2.2 Compared Parameters

Parameter	Planned	Actual	Parameter	Planned	Actual
Instrument	ACIS	ACIS	Obspar format version number	7	7
Detector	ACIS-012367	ACIS-012367	Obspar file type	PREDICTED	ACTUAL
Grating	NONE	NONE	Obspar update status	NONE	UPDATED
Data mode	VFAINT	VFAINT	CCD I0 on	Y	Y
Observation mode	POINTING	POINTING	CCD I1 on	Y	Y
[deg] Pointing RA	84.725762	84.66058101892889	CCD I2 on	Y	Y
[deg] Pointing Dec	-69.109833	-69.0949707151011	CCD I3 on	Y	Y
[deg] Pointing Roll	117.045871	117.1936549067303	CCD S0 on	N	N
[mm] SIM focus pos	-0.782348	-0.7809083437167272	CCD S1 on	N	N
[mm] SIM defocus	0	0.001439871863259334	CCD S2 on	O1	Y
[mm] SIM translation stage pos	-233.592463	-233.5899487761303	CCD S3 on	O2	Y
[mm] SIM translation stage offset	0	-0.002504226799430853	CCD S4 on	N	N
[s] Observation start time (MET)	524851089.184000	524849401.90641	CCD S5 on	N	N
Observation start date	2014-08-19T15:57:02	2014-08-19T15:30:01	Number of optional ACIS chips dropped	0	0
[s] Observation end time (MET)	524917089.184000	524917775.5602	On-chip summing requested	N	N
Observation end date	2014-08-20T10:17:02	2014-08-20T10:29:35	Subarray requested	NONE	NONE
Read mode	TIMED	TIMED	Alternating exposures requested	N	N
			[s] Primary exposure time	0.000000	3.2

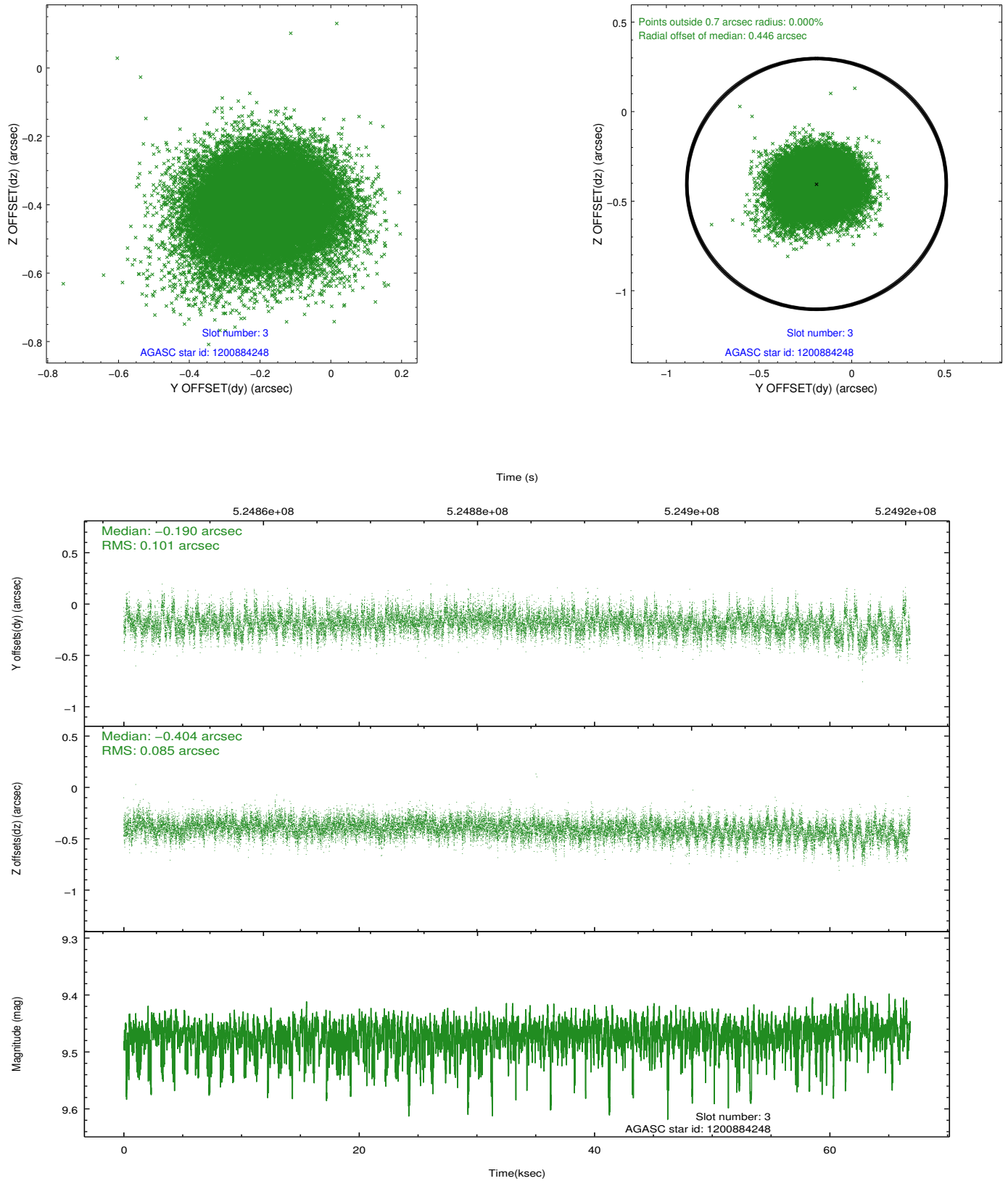
2.3 Aspect

Slot Statistics

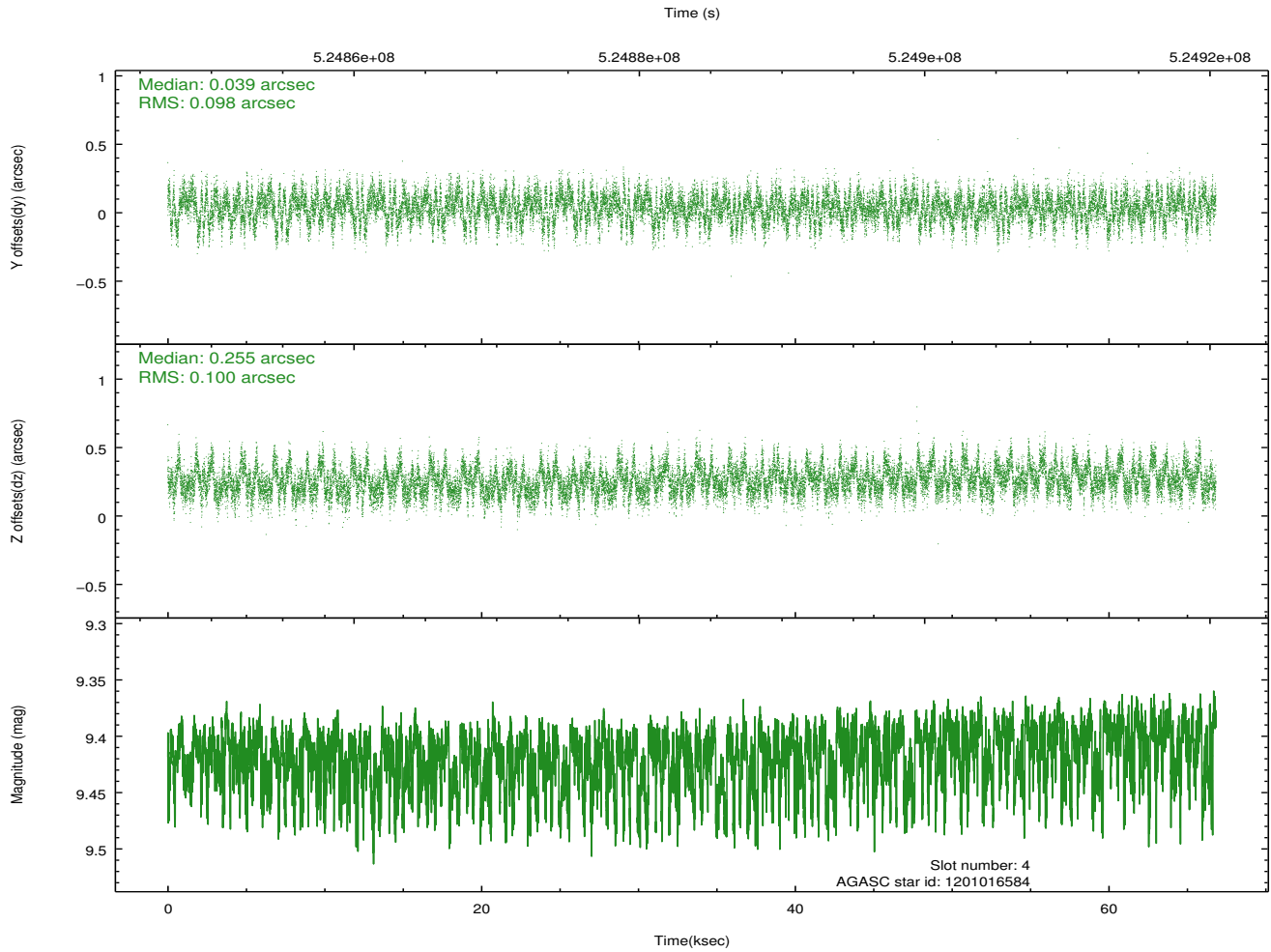
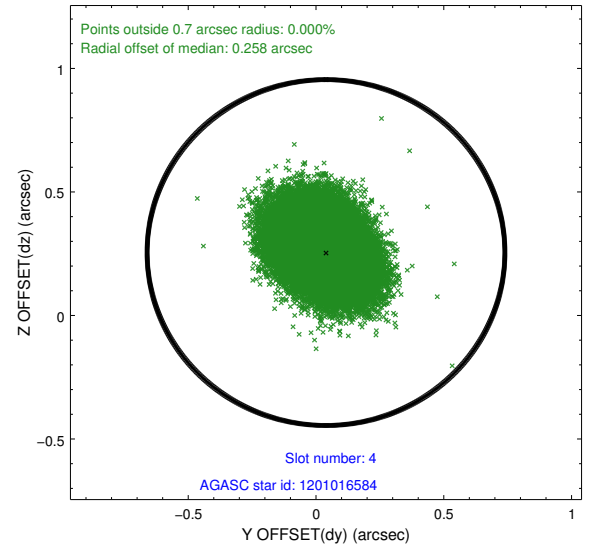
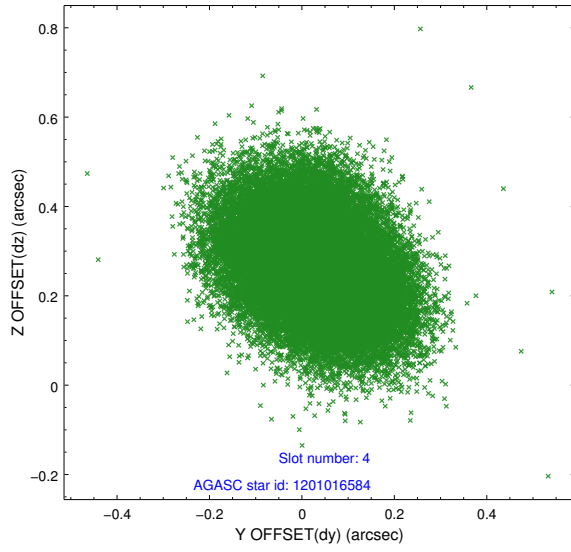
slot	status	id	mag	n_pts	med_dy	med_dz	dr1	dr2	ra	dec	mean_y	mean_z
0	FID	ACIS-I-1	7.08	16301	0.032	0.019	0.045	0.065	0.000000	0.000000	917.41	-843.47
1	FID	ACIS-I-5	7.07	16301	-0.266	0.030	0.019	0.029	0.000000	0.000000	-1831.09	1053.98
2	FID	ACIS-I-6	7.07	16301	0.139	0.025	0.034	0.044	0.000000	0.000000	383.03	1698.48
3	GUIDE	1200884248	9.47	32574	-0.190	-0.404	0.138	0.232	83.880915	-68.565170	2245.38	101.65
4	GUIDE	1201016584	9.42	32570	0.039	0.255	0.150	0.239	85.677603	-68.415933	1644.12	-2253.25
5	GUIDE	1201018312	9.57	32559	0.429	0.047	0.137	0.218	86.298231	-69.115627	-957.80	-1775.73
6	GUIDE	1201018384	9.05	32570	-0.085	0.068	0.132	0.208	85.801362	-68.593260	1003.33	-2098.77
7	GUIDE	1201020040	8.59	32589	-0.179	0.033	0.077	0.126	85.379163	-68.879396	350.05	-1129.66

2.4 Star Slots

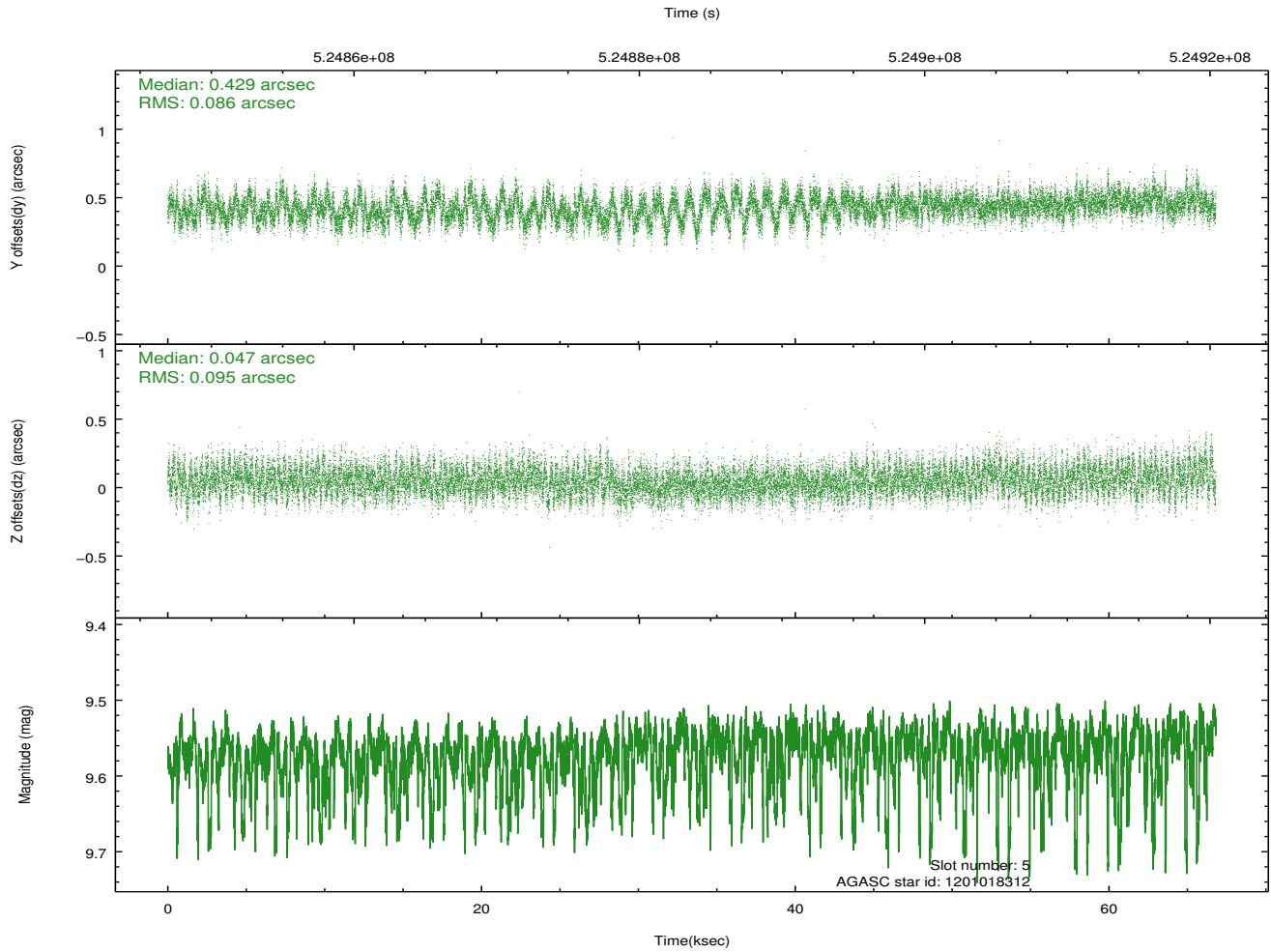
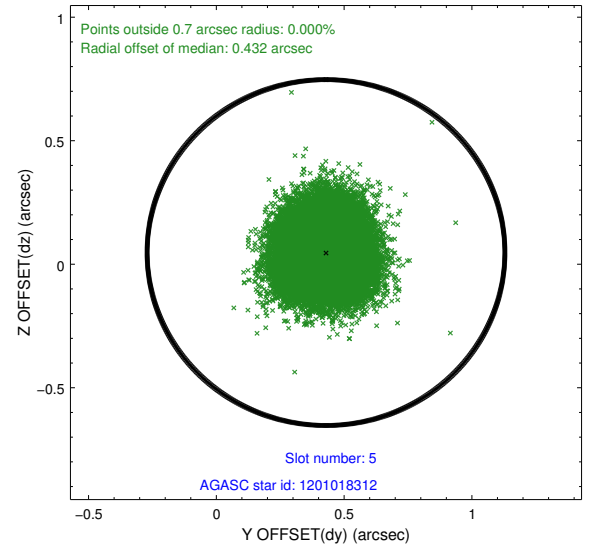
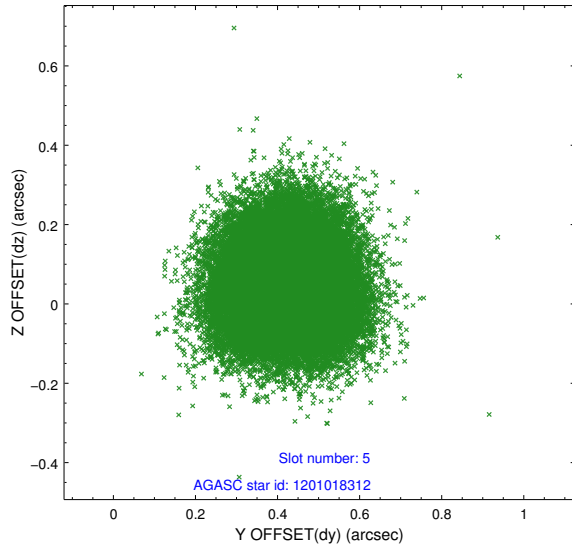
2.4.1 Slot 3



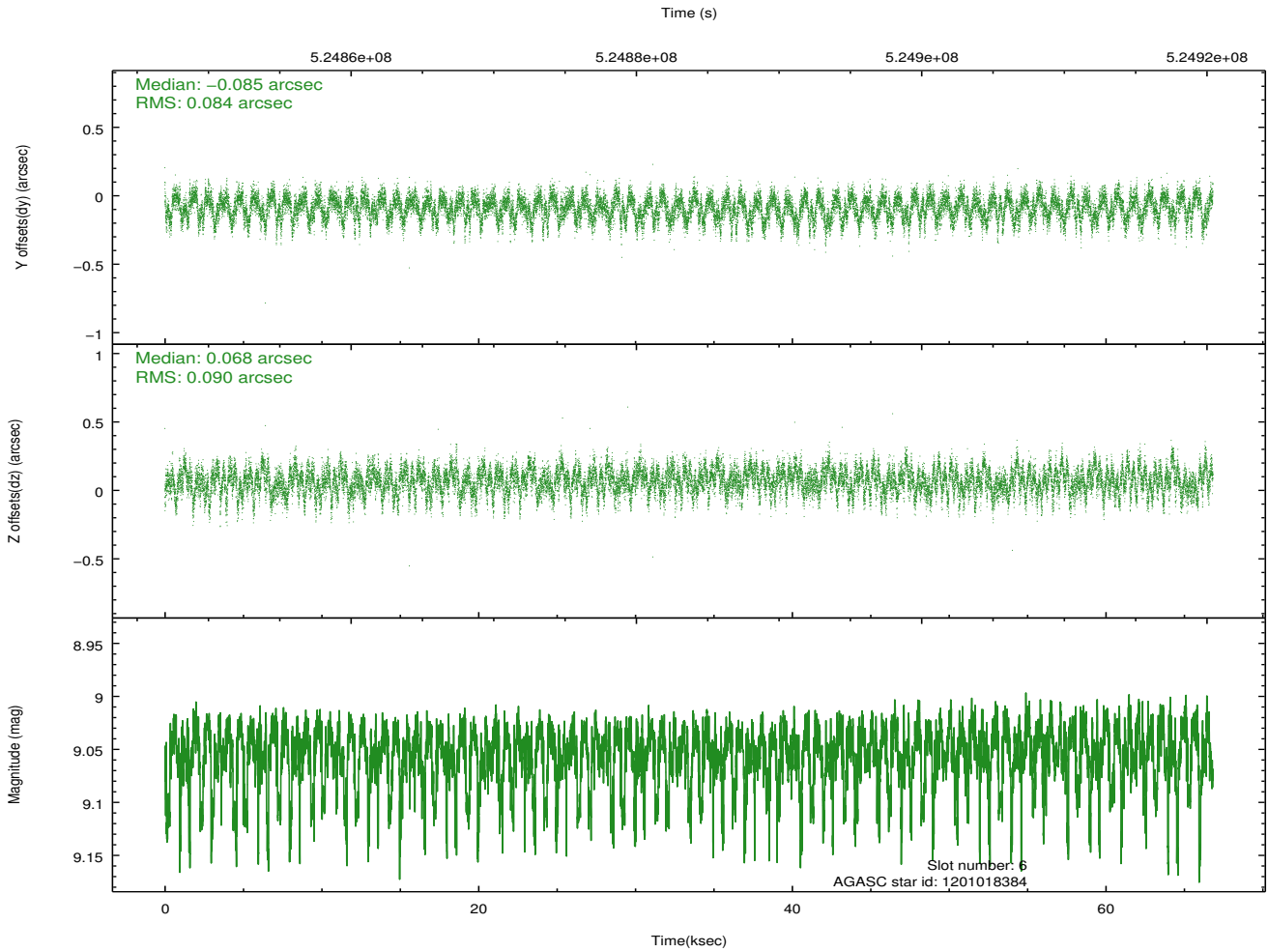
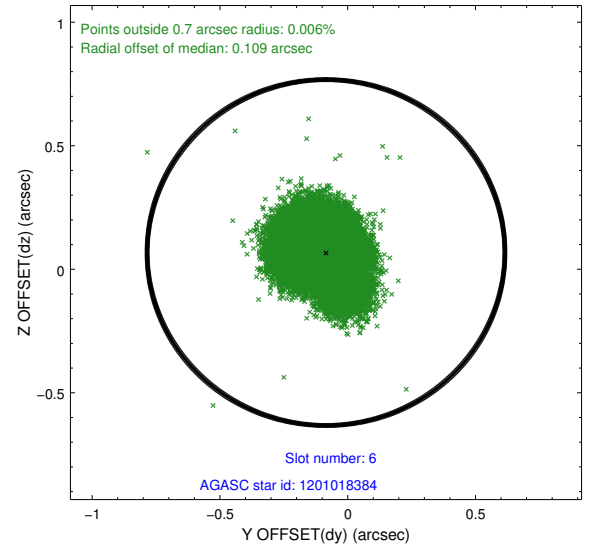
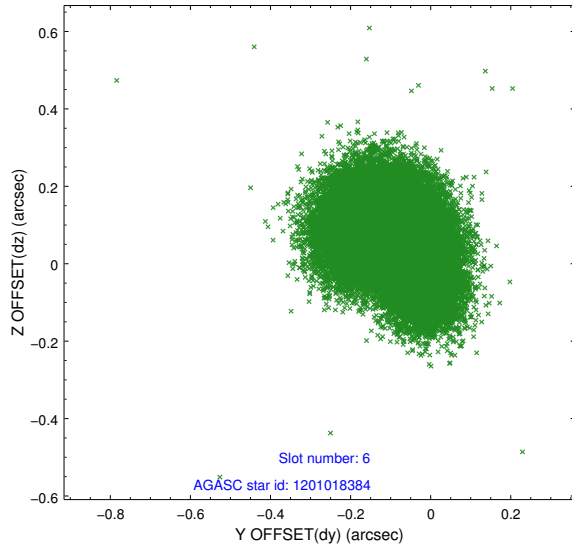
2.4.2 Slot 4



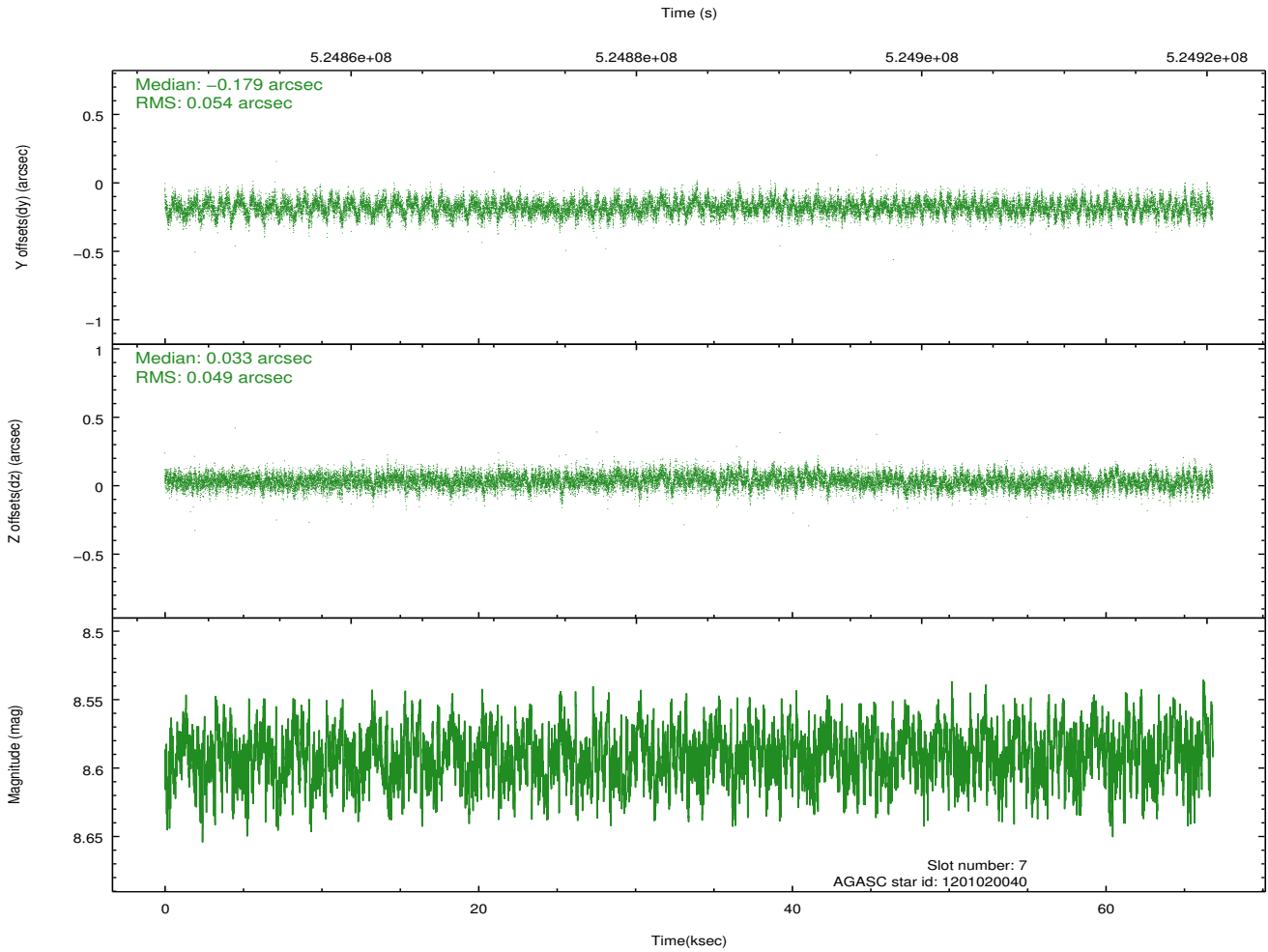
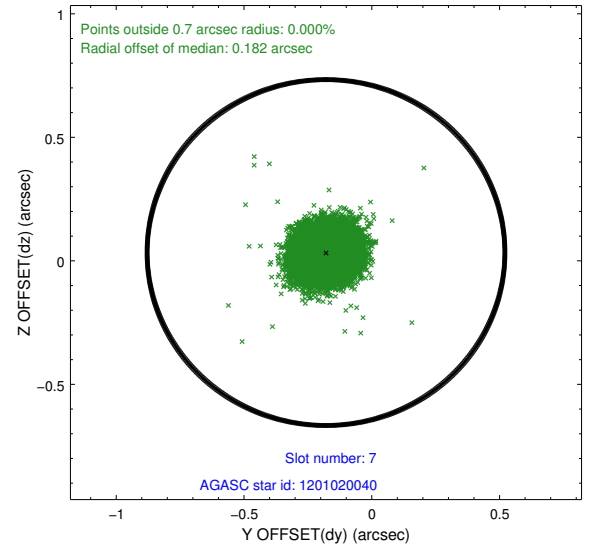
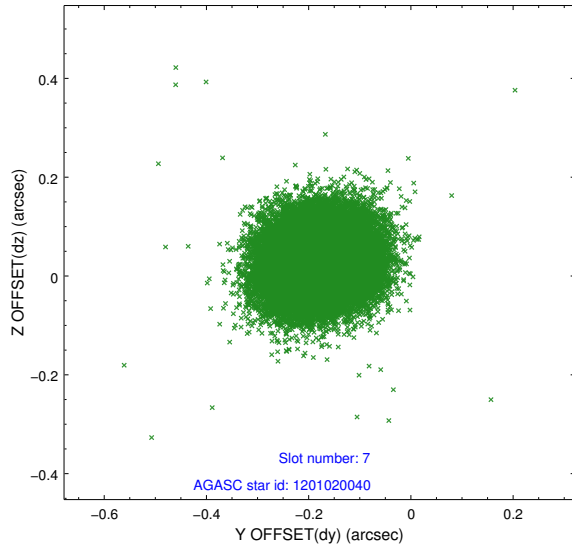
2.4.3 Slot 5



2.4.4 Slot 6

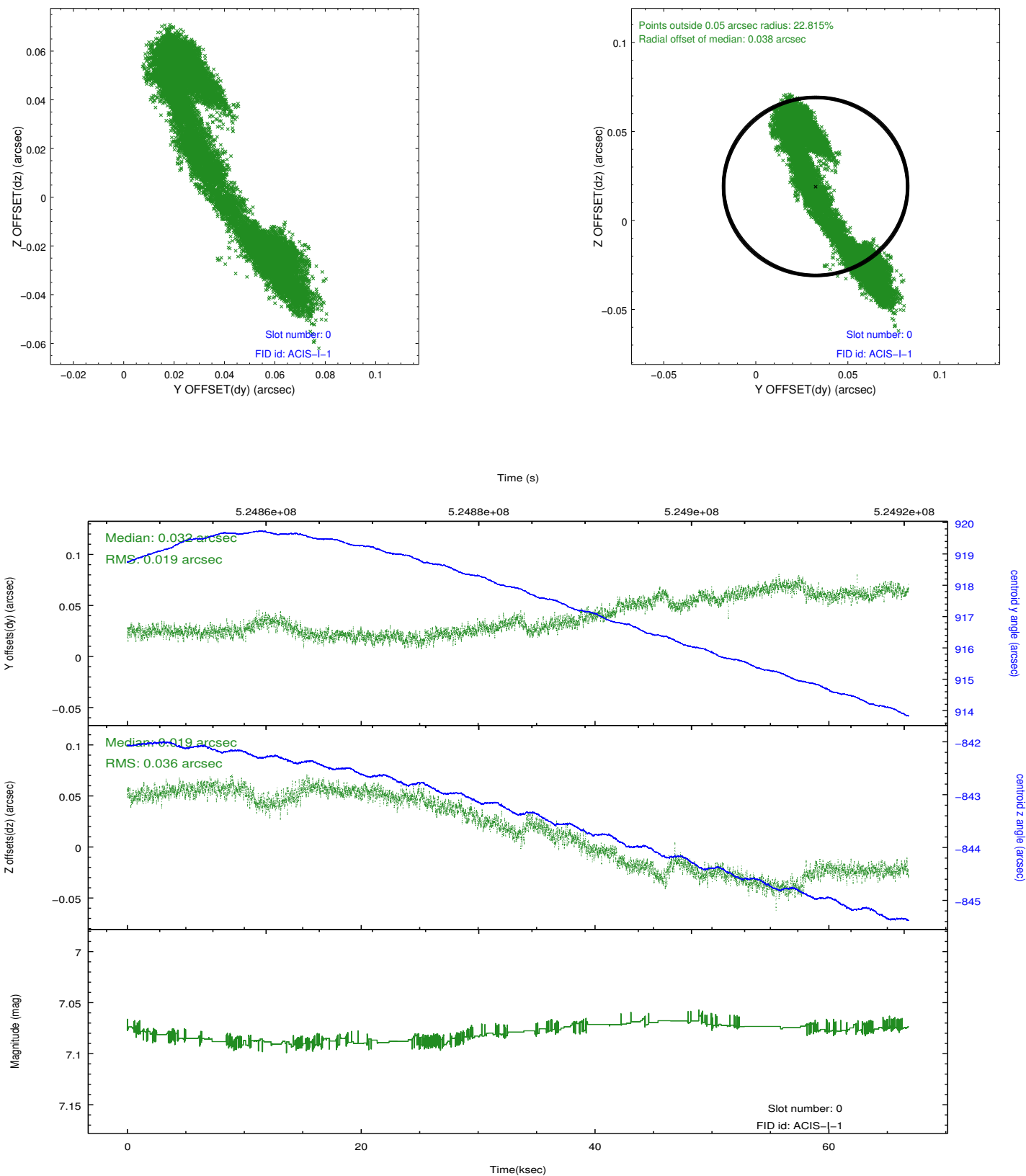


2.4.5 Slot 7

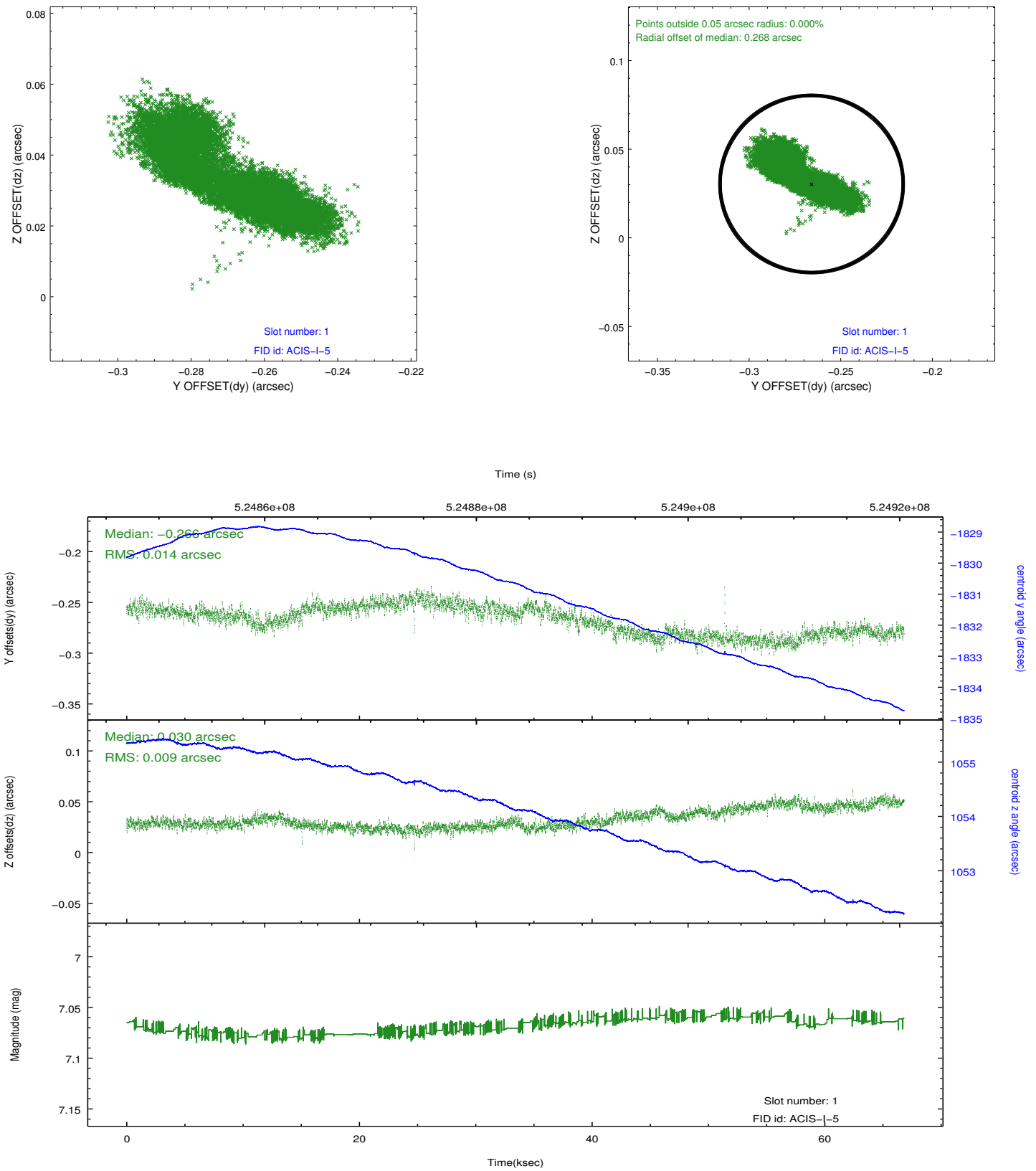


2.5 FID Slots

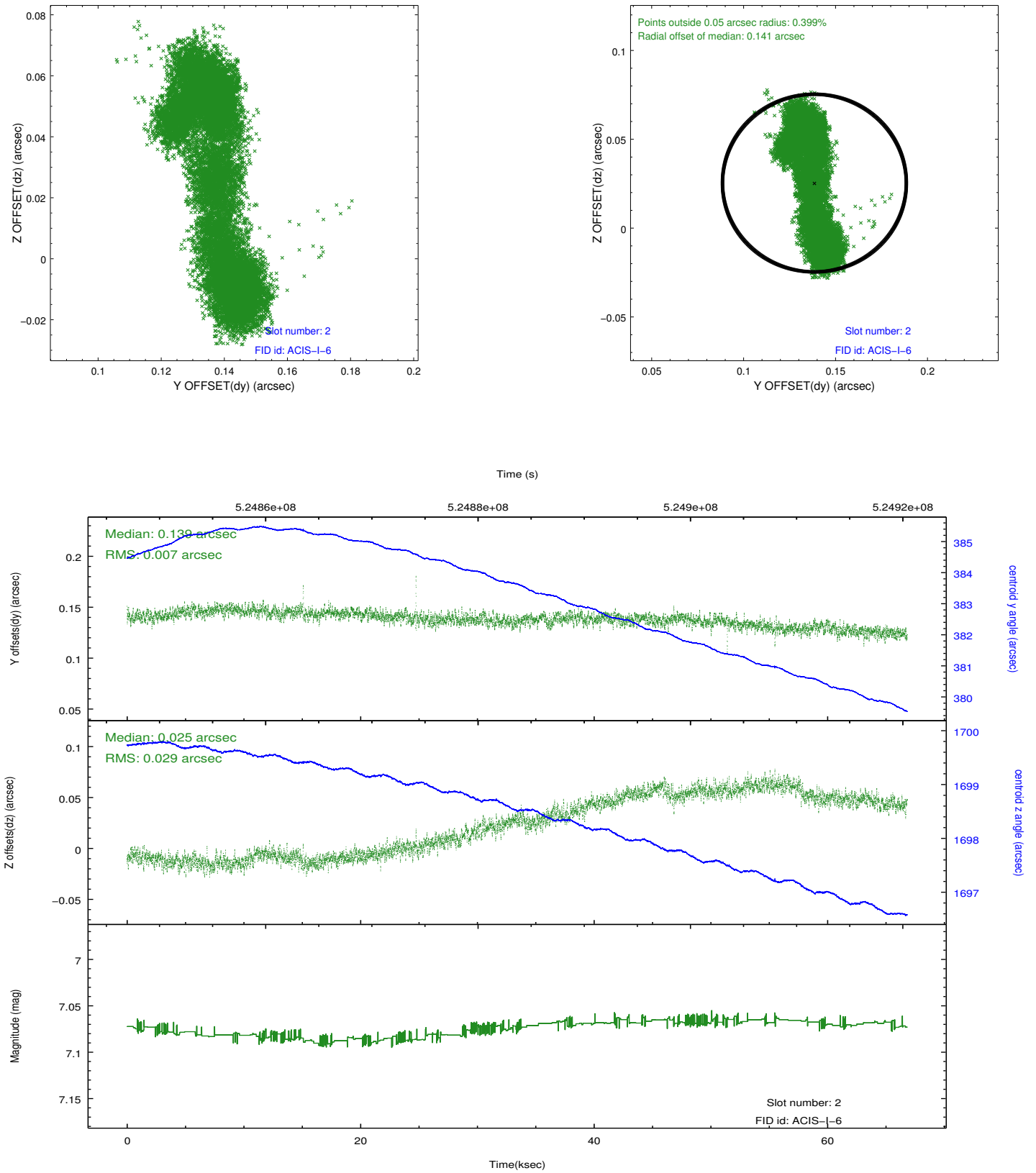
2.5.1 Slot 0



2.5.2 Slot 1



2.5.3 Slot 2



A Summary

A.1 Status

V&V Scientist	Joy Nichols
V&V Date (YYYY-MM-DD)	2014.08.21
V&V Edition	1
V&V Disposition and Status	OK
V&V Charge Time	65.96335065639

A.2 Comments