

V&V Reference Report

L2 ASCDS Version : 10.2.4

Observation 16634 - L2 Version 1
Chandra X-Ray Center

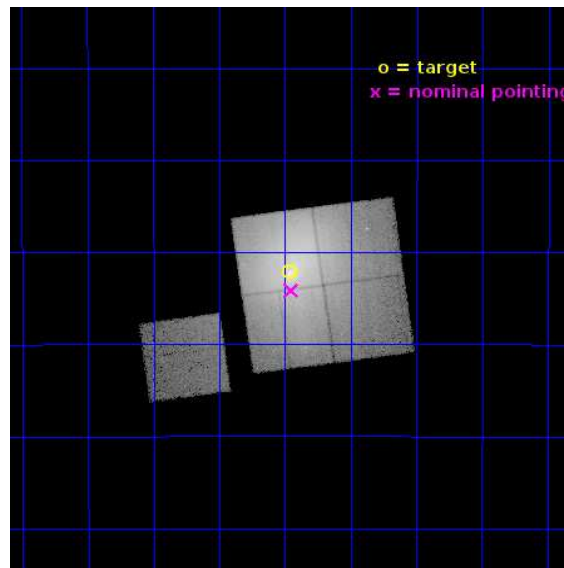
L2 Processing Date : Jul 12 2014

Contents

1	Front	2
2	OBI	3
2.1	OBI	3
2.1.1	Images	3
2.1.2	Bias	3
2.1.3	Parameters	4
2.1.4	Events	4
2.2	Compared Parameters	5
2.3	Aspect	6
2.4	Star Slots	9
2.4.1	Slot 3	9
2.4.2	Slot 4	10
2.4.3	Slot 5	11
2.4.4	Slot 6	12
2.4.5	Slot 7	13
2.5	FID Slots	14
2.5.1	Slot 0	14
2.5.2	Slot 1	15
2.5.3	Slot 2	16
A	Summary	17
A.1	Status	17
A.2	Comments	17

1 Front

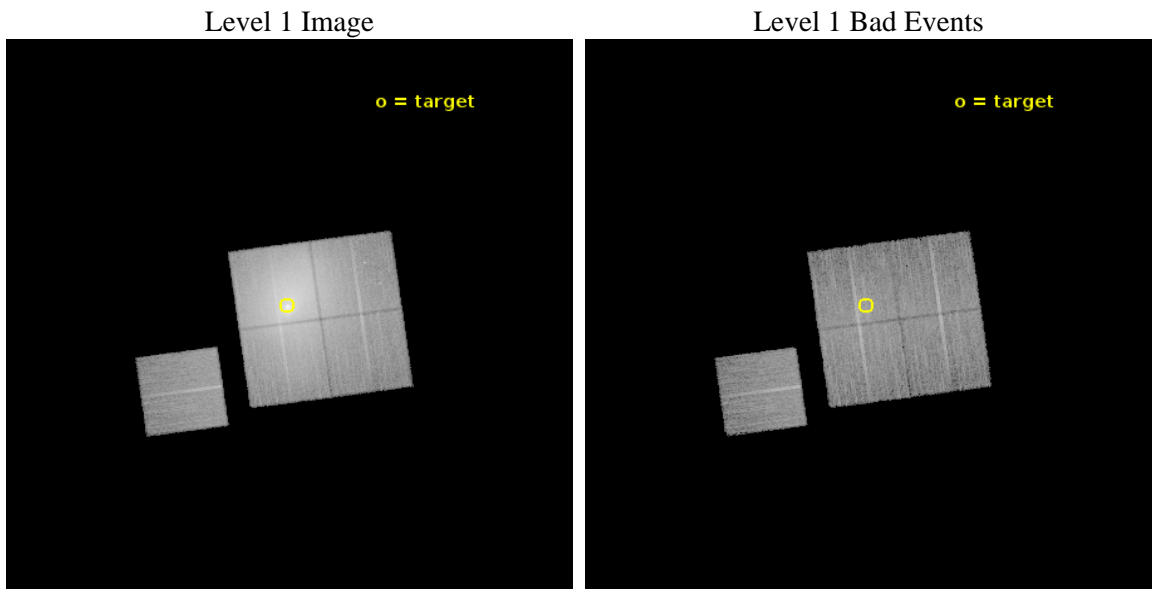
seq_num	801396	Sequence number
obs_id	16634	Observation id
title	A deep study of ram-pressure stripping, metal ridges, and AGN feedback in the Ophiuchus Cluster	Proposal title
observer	Steven Allen	Principal investigator
object	Ophiuchus Cluster	Source name
dtcycle	0	
cycle	P	events from which exps? Prim/Second/Both
ra_targ	258.115417	Observer's specified target RA [deg]
dec_targ	-23.368611	Observer's specified target Dec [deg]
ra_nom	258.11300093022	Nominal RA [deg]
dec_nom	-23.402245269062	Nominal Dec [deg]
roll_nom	262.20772822042	Nominal Roll [deg]
revision	1	Processing version of data
ontime	22685.800174475	Sum of GTIs [s]
livetime	22389.393494152	Livetime [s]
ontime0	22685.800174475	Sum of GTIs [s]
ontime1	22685.800174475	Sum of GTIs [s]
ontime2	22685.800174475	Sum of GTIs [s]
ontime3	22685.800174475	Sum of GTIs [s]
ontime6	22685.800174475	Sum of GTIs [s]
l2events	667792	Number of level 2 events



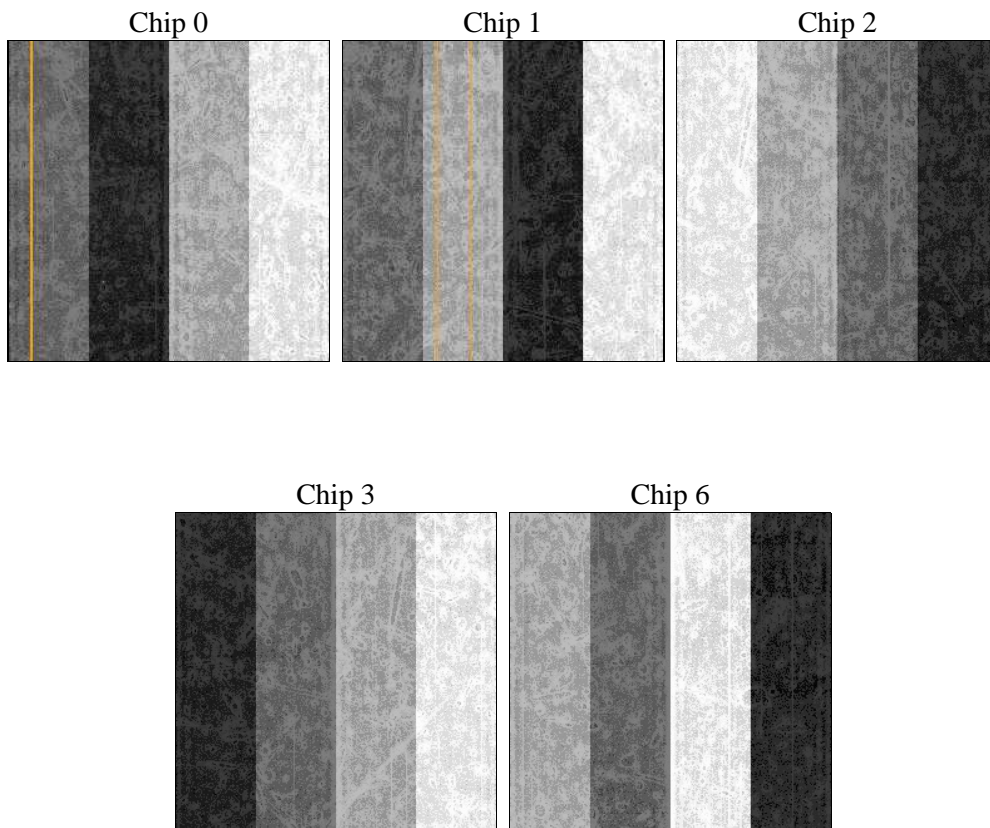
2 OBI

2.1 OBI

2.1.1 Images



2.1.2 Bias



2.1.3 Parameters

obi_num	1	Obi number	sched_exp_time	22600.000000	[s] Scheduled observation exposure time
ascdsver	10.2.4	Processing system revision	ontime	22685.800174475	Sum of GTIs [s]
caldsver	4.6.2	 	ontime0	22685.800174475	Sum of GTIs [s]
date	2014-07-12T11:46:46	Date and time of file creation	ontime1	22685.800174475	Sum of GTIs [s]
revision	1	Processing version of data	ontime2	22685.800174475	Sum of GTIs [s]
			ontime3	22685.800174475	Sum of GTIs [s]
			ontime6	22685.800174475	Sum of GTIs [s]
			l1events	1167150	Number of level 1 events

2.1.4 Events

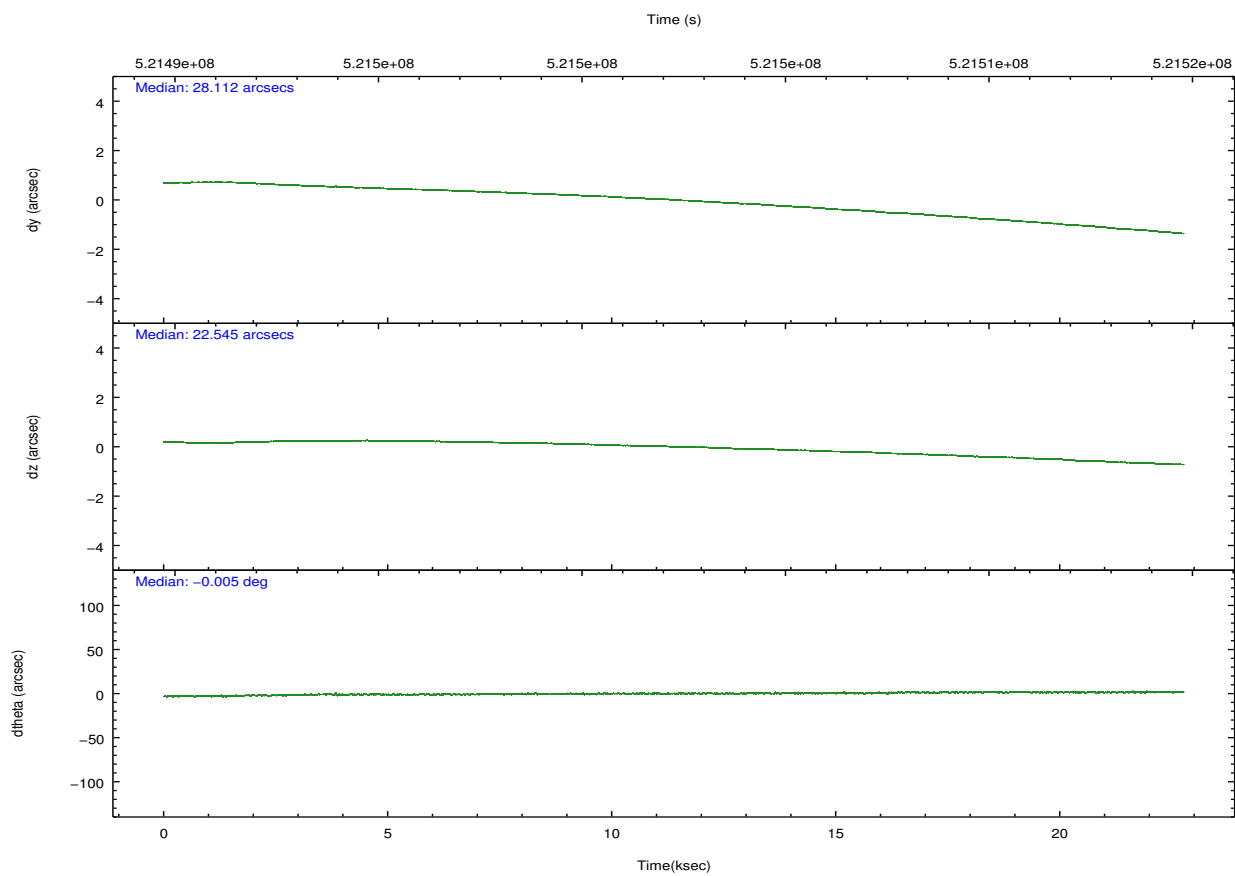
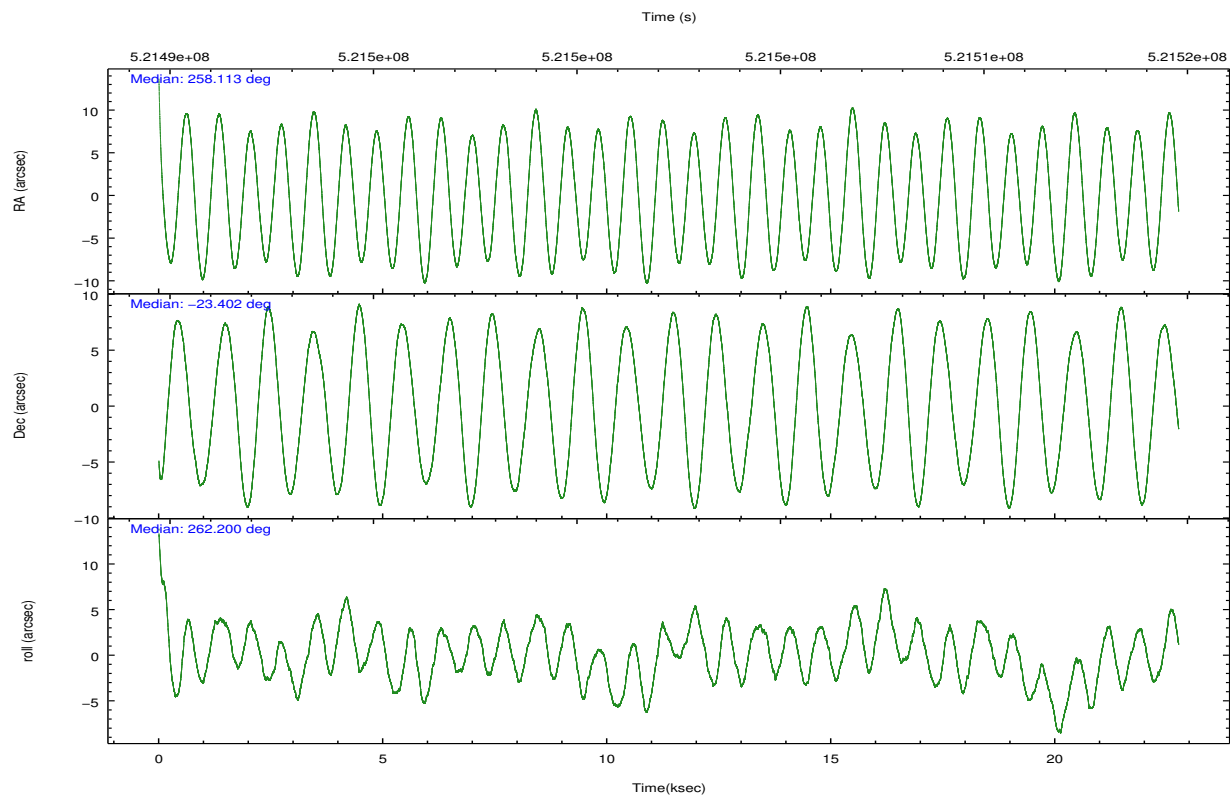
	ccd 0	ccd 1	ccd 2	ccd 3	ccd 6
level 1 events	143151	207028	226130	472269	118572
rejected events	85632	88053	98035	96316	92503
rejected %	59%	42%	43%	20%	78%

	ccd 0	ccd 1	ccd 2	ccd 3	ccd 6
grade 0 events	39051	85978	95298	288597	14469
	27%	41%	42%	61%	12%
grade 1 events	172	330	398	1211	72
	0%	0%	0%	0%	0%
grade 2 events	8351	15826	15614	43217	4482
	5%	7%	6%	9%	3%
grade 3 events	2973	5065	5358	14301	1780
	2%	2%	2%	3%	1%
grade 4 events	2880	4991	5439	14360	1763
	2%	2%	2%	3%	1%
grade 5 events	5421	6051	5277	7318	5688
	3%	2%	2%	1%	4%
grade 6 events	4279	7146	6421	15594	3580
	2%	3%	2%	3%	3%
grade 7 events	80024	81641	92325	87671	86738
	55%	39%	40%	18%	73%

2.2 Compared Parameters

Parameter	Planned	Actual	Parameter	Planned	Actual
Instrument	ACIS	ACIS	Obspar format version number	7	7
Detector	ACIS-01236	ACIS-01236	Obspar file type	PREDICTED	ACTUAL
Grating	NONE	NONE	Obspar update status	NONE	UPDATED
Data mode	FAINT	FAINT	CCD I0 on	Y	Y
Observation mode	POINTING	POINTING	CCD I1 on	Y	Y
[deg] Pointing RA	258.101519	258.1130009302212	CCD I2 on	Y	Y
[deg] Pointing Dec	-23.376750	-23.402245269062	CCD I3 on	Y	Y
[deg] Pointing Roll	261.994485	262.2077282204215	CCD S0 on	N	N
[mm] SIM focus pos	-0.782348	-0.7809083437167272	CCD S1 on	N	N
[mm] SIM defocus	0	0.001439871863259334	CCD S2 on	O1	Y
[mm] SIM translation stage pos	-226.282463	-226.2858628250985	CCD S3 on	N	N
[mm] SIM translation stage offset	-7.31	-7.306590177831225	CCD S4 on	N	N
[s] Observation start time (MET)	521491047.184000	521489993.43273	CCD S5 on	N	N
Observation start date	2014-07-11T18:36:20	2014-07-11T18:19:53	Number of optional ACIS chips dropped	0	0
[s] Observation end time (MET)	521513647.184000	521514532.95909	On-chip summing requested	N	N
Observation end date	2014-07-12T00:53:00	2014-07-12T01:08:52	Subarray requested	NONE	NONE
Read mode	TIMED	TIMED	Alternating exposures requested	N	N
			[s] Primary exposure time	0.000000	3.1

2.3 Aspect

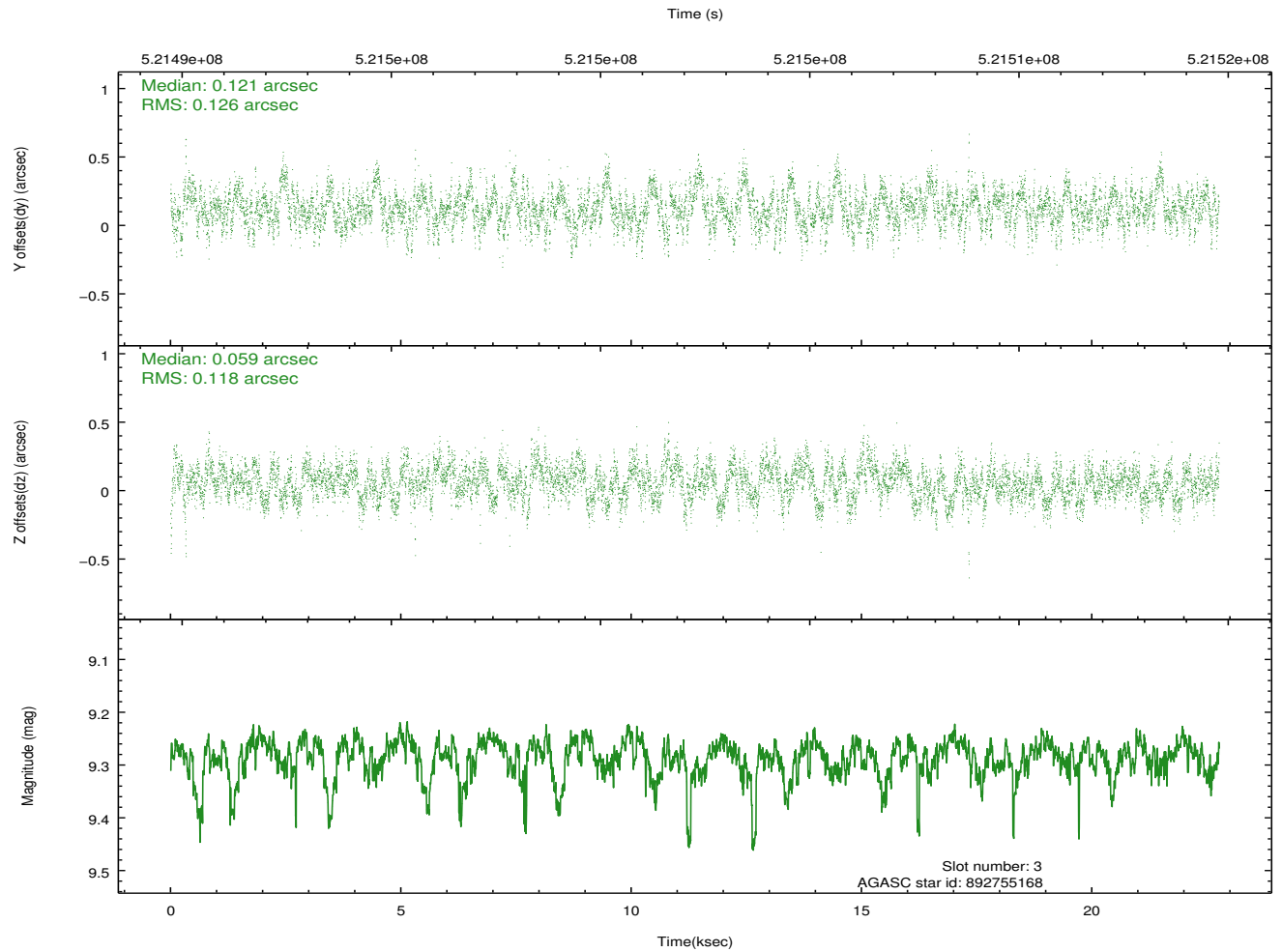
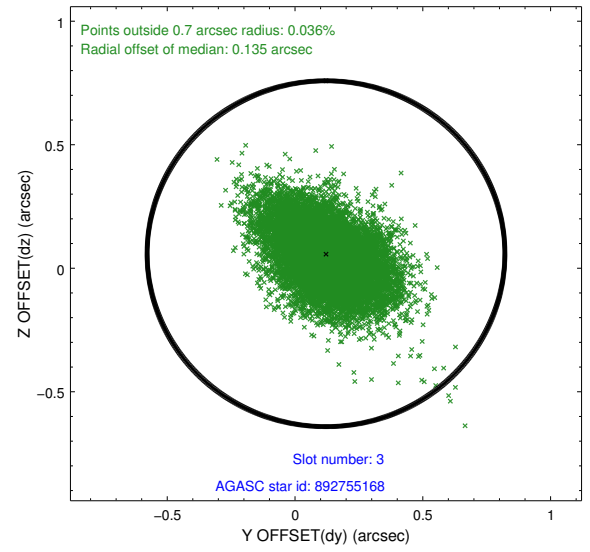
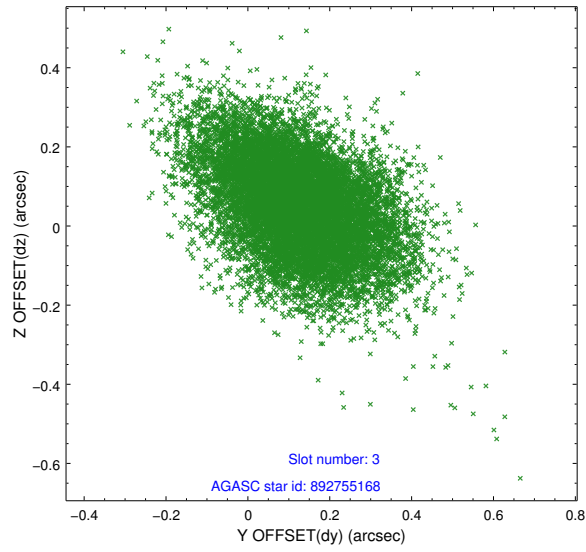


Slot Statistics

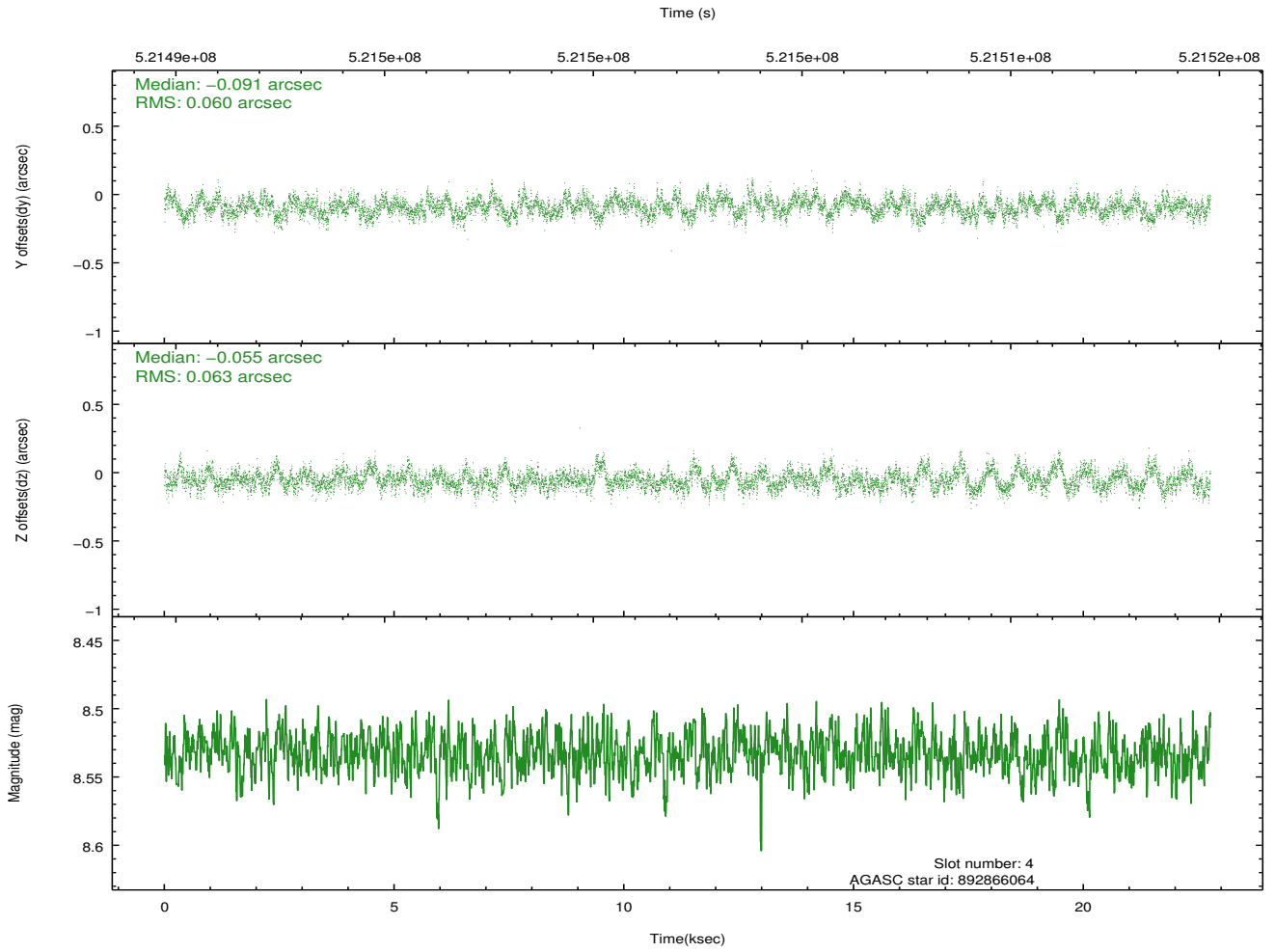
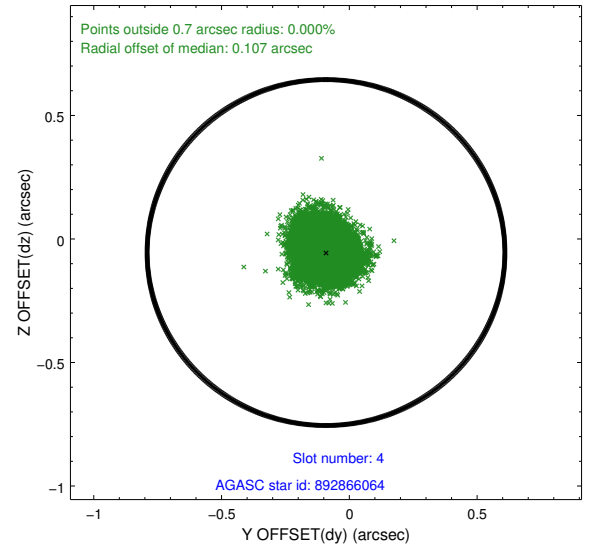
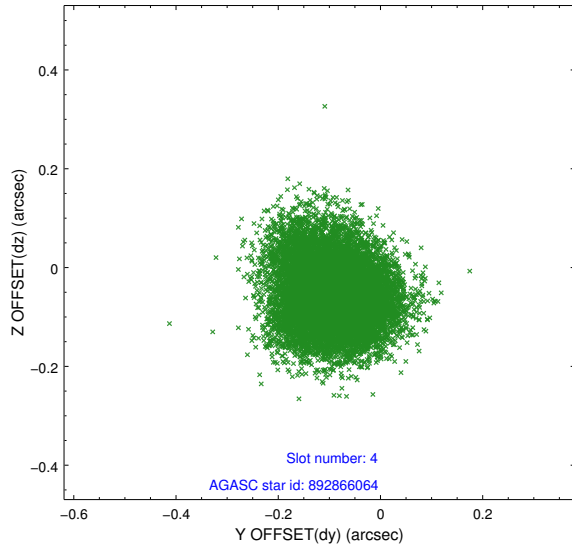
slot	status	id	mag	n_pts	med_dy	med_dz	dr1	dr2	ra	dec	mean_y	mean_z
0	FID	ACIS-I-1	7.10	5552	0.092	-0.046	0.013	0.028	0.000000	0.000000	911.11	-996.25
1	FID	ACIS-I-5	7.10	5552	-0.384	0.045	0.017	0.034	0.000000	0.000000	-1837.49	901.11
2	FID	ACIS-I-6	7.12	5552	0.202	0.070	0.019	0.045	0.000000	0.000000	376.47	1545.91
3	GUIDE	892755168	9.28	11091	0.121	0.059	0.181	0.300	257.345207	-23.908184	2248.88	-2197.37
4	GUIDE	892866064	8.53	11098	-0.091	-0.055	0.093	0.149	258.346240	-23.232516	-625.54	728.97
5	GUIDE	892867312	9.09	11093	0.358	-0.036	0.136	0.214	258.441623	-24.052318	2254.77	1446.34
6	GUIDE	892867776	8.49	11095	-0.271	-0.238	0.084	0.139	258.697515	-24.060278	2168.31	2283.52
7	GUIDE	892865624	9.22	11093	-0.119	0.274	0.138	0.220	257.483794	-23.531864	842.32	-1940.18

2.4 Star Slots

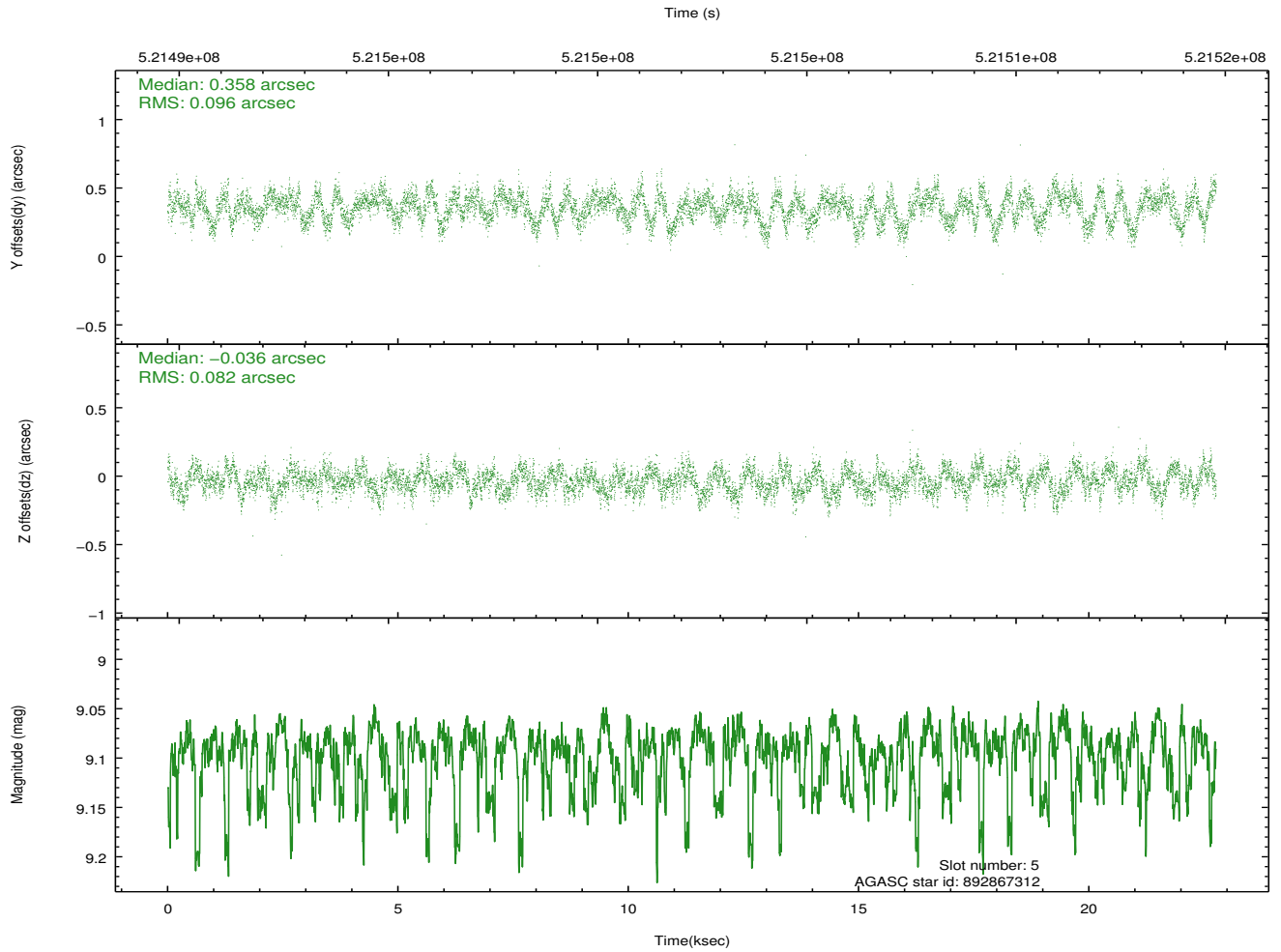
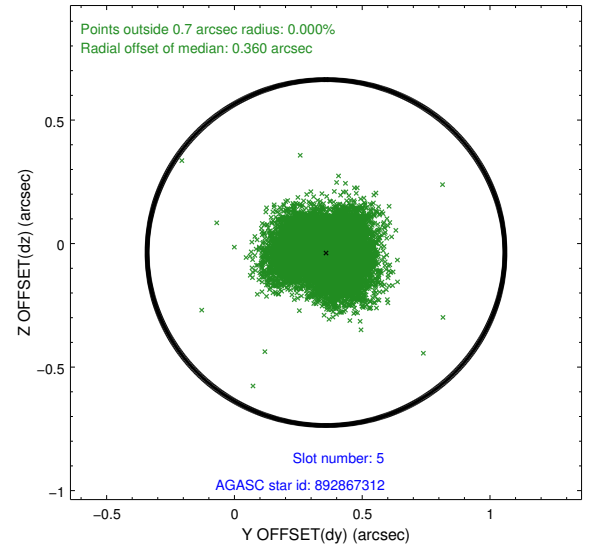
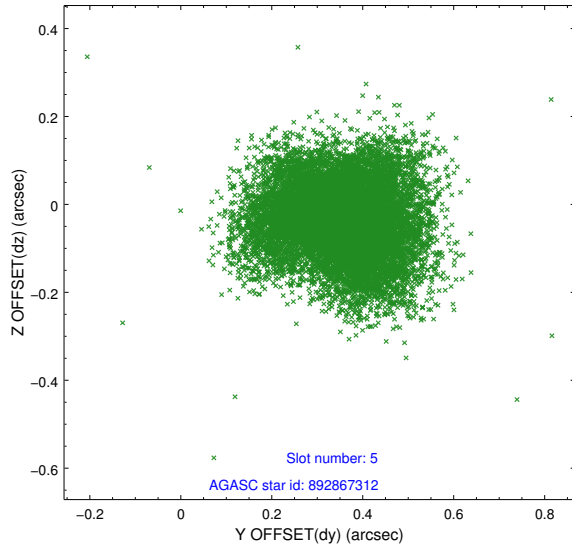
2.4.1 Slot 3



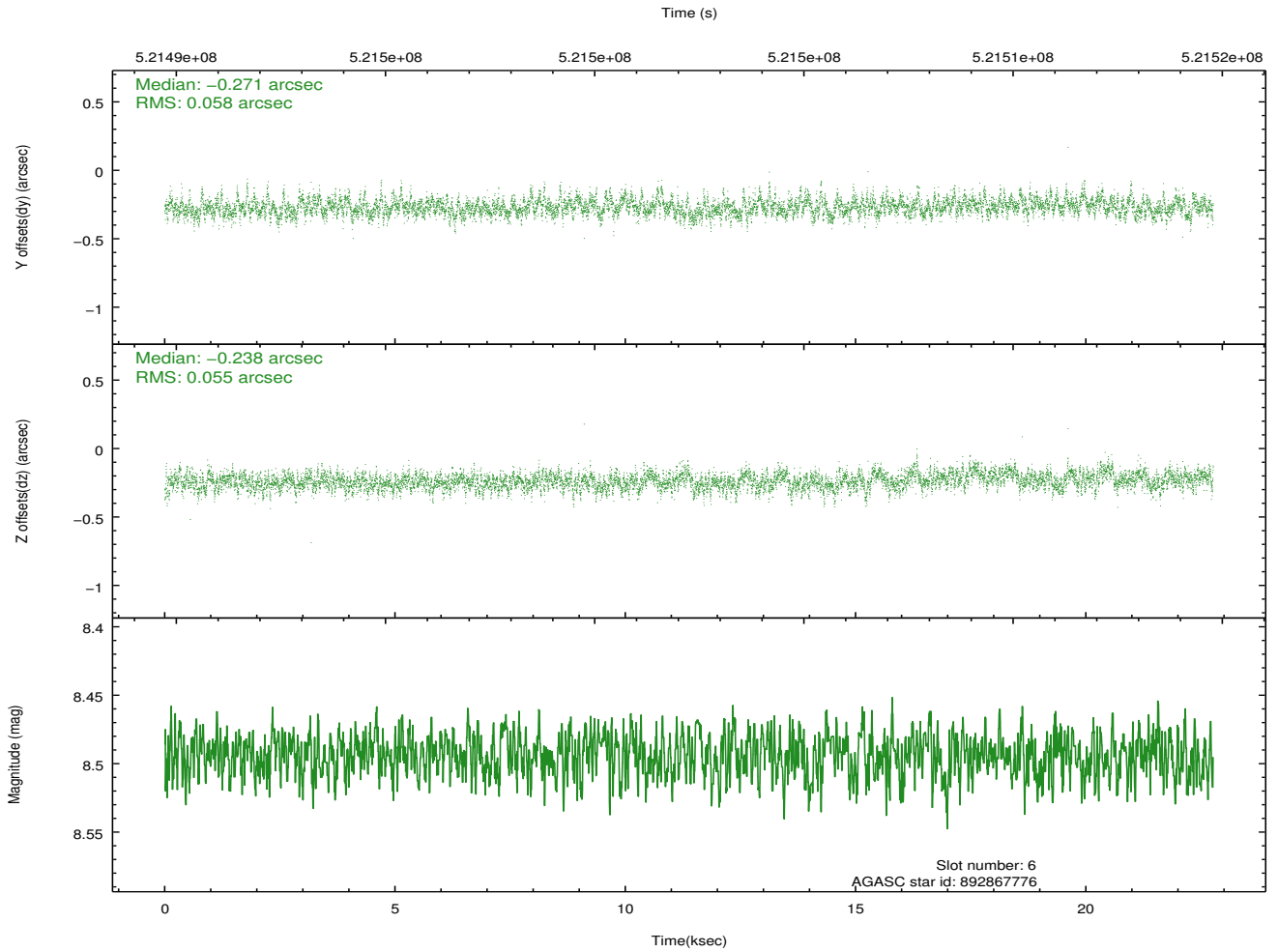
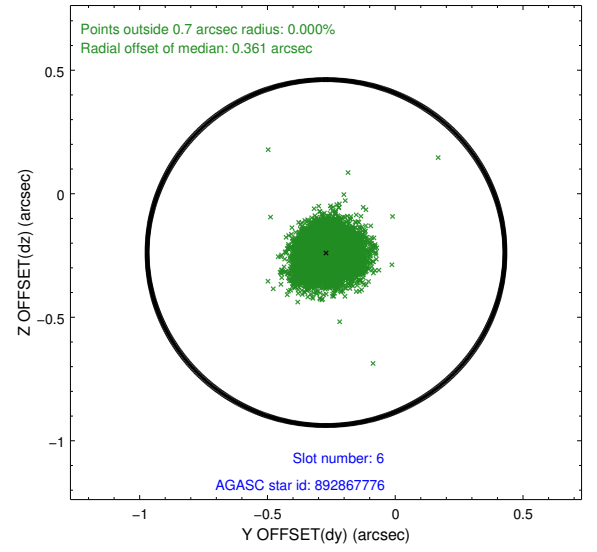
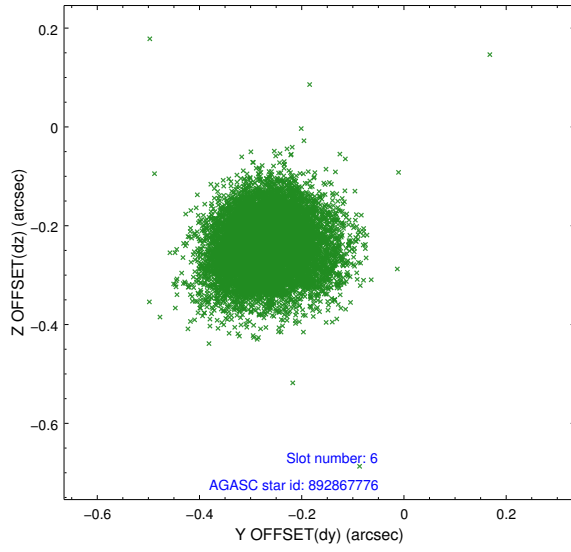
2.4.2 Slot 4



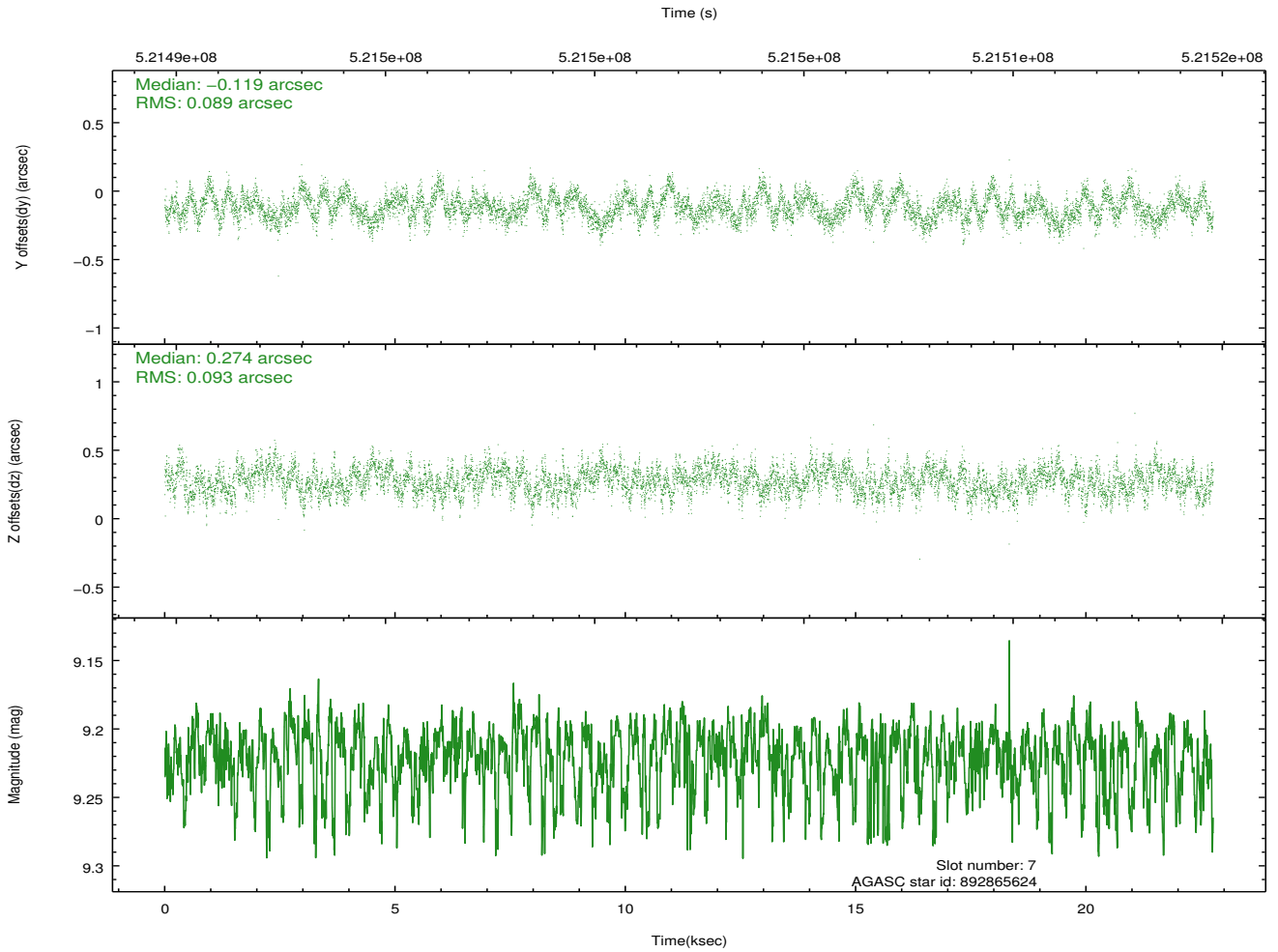
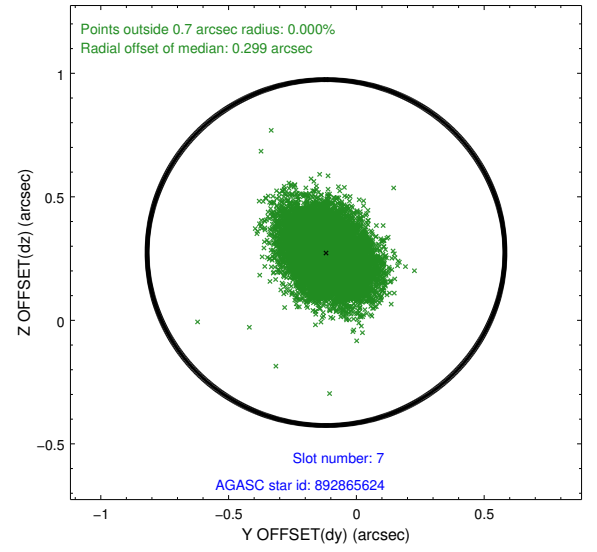
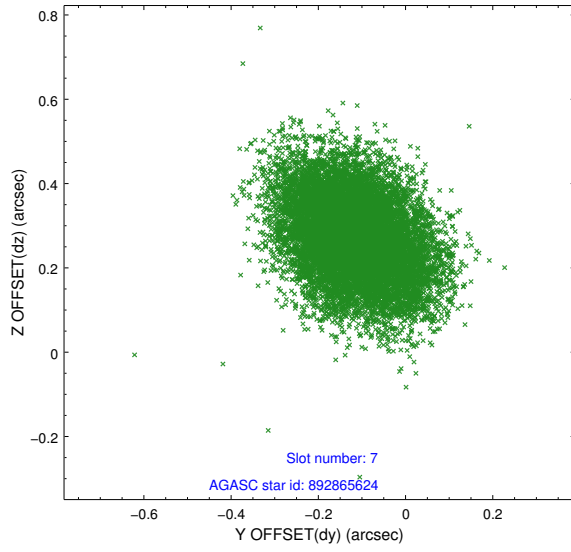
2.4.3 Slot 5



2.4.4 Slot 6

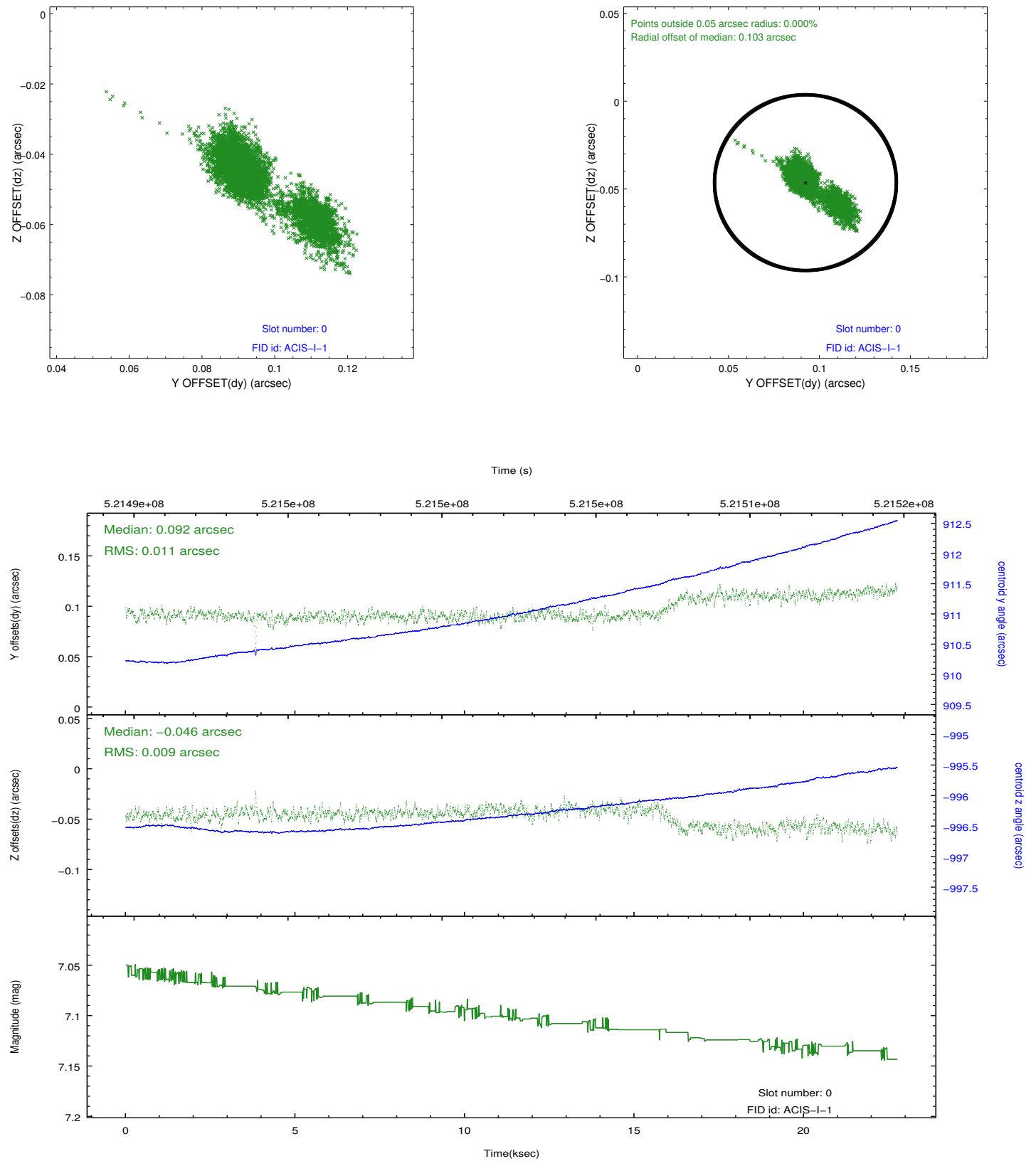


2.4.5 Slot 7

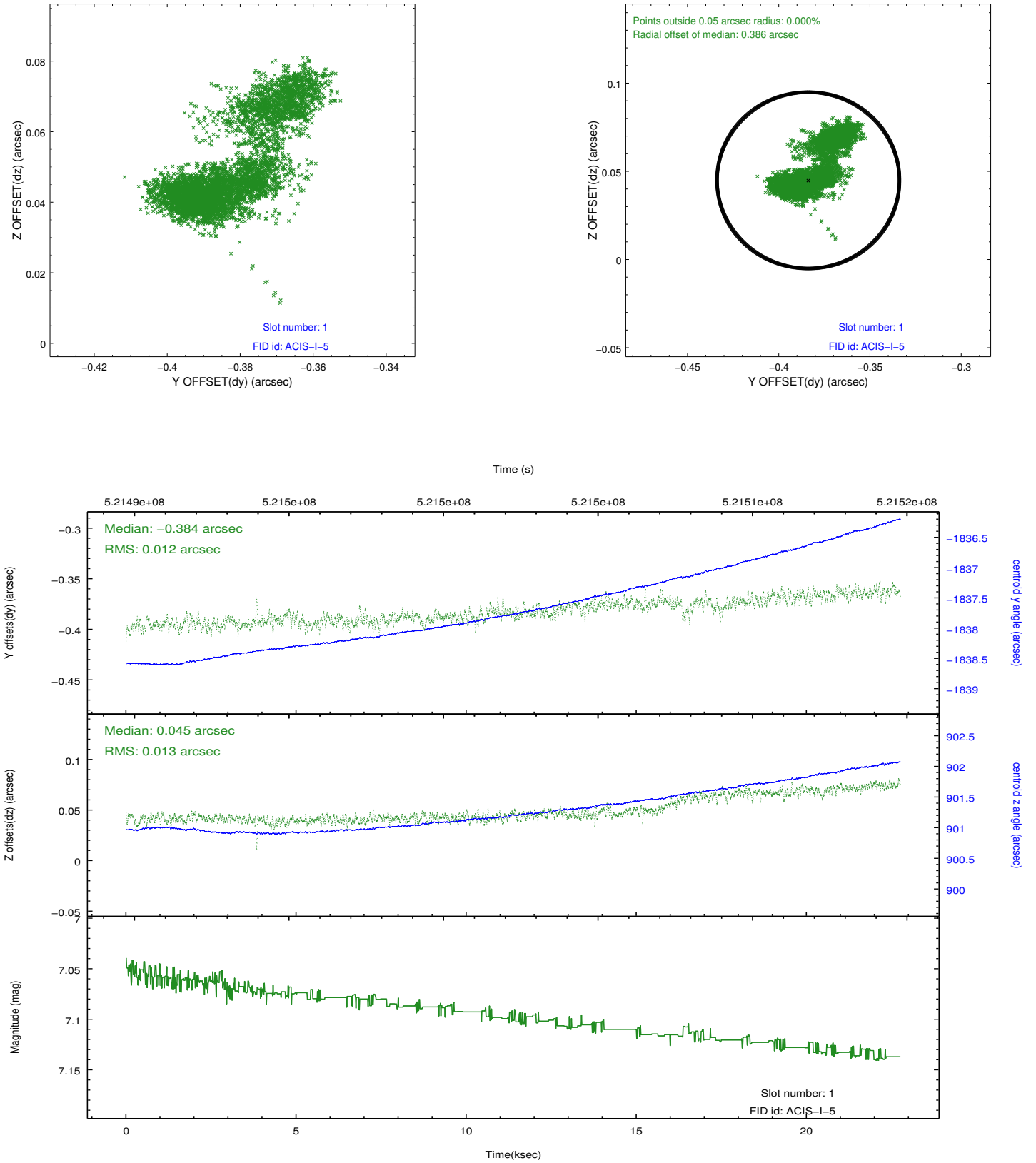


2.5 FID Slots

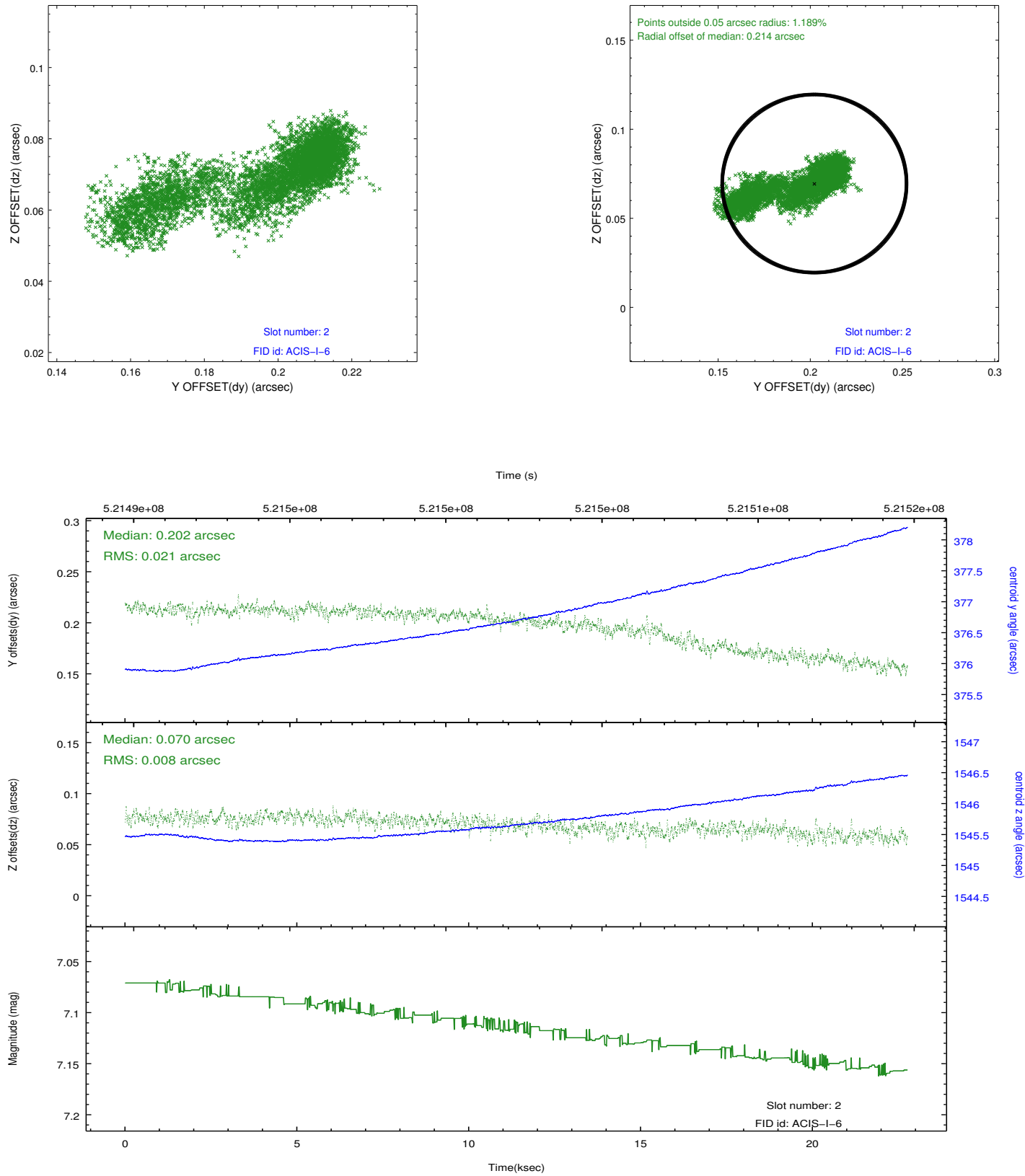
2.5.1 Slot 0



2.5.2 Slot 1



2.5.3 Slot 2



A Summary

A.1 Status

V&V Scientist	Beth Sundheim
V&V Date (YYYY-MM-DD)	2014.07.13
V&V Edition	1
V&V Disposition and Status	OK
V&V Charge Time	22.685800174475

A.2 Comments

Joint proposal with NRAO.