

V&V Reference Report

L2 ASCDS Version : 10.2.4

Observation 16121 - L2 Version 1
Chandra X-Ray Center

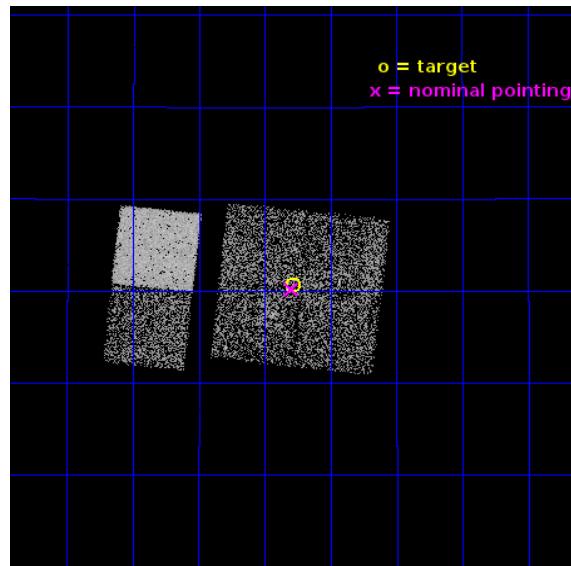
L2 Processing Date : Aug 31 2014

Contents

1	Front	2
2	OBI	3
2.1	OBI	3
2.1.1	Images	3
2.1.2	Bias	3
2.1.3	Parameters	4
2.1.4	Events	4
2.2	Compared Parameters	5
2.3	Aspect	6
2.4	Star Slots	9
2.4.1	Slot 3	9
2.4.2	Slot 4	10
2.4.3	Slot 5	11
2.4.4	Slot 6	12
2.4.5	Slot 7	13
2.5	FID Slots	14
2.5.1	Slot 0	14
2.5.2	Slot 1	15
2.5.3	Slot 2	16
A	Summary	17
A.1	Status	17
A.2	Comments	17

1 Front

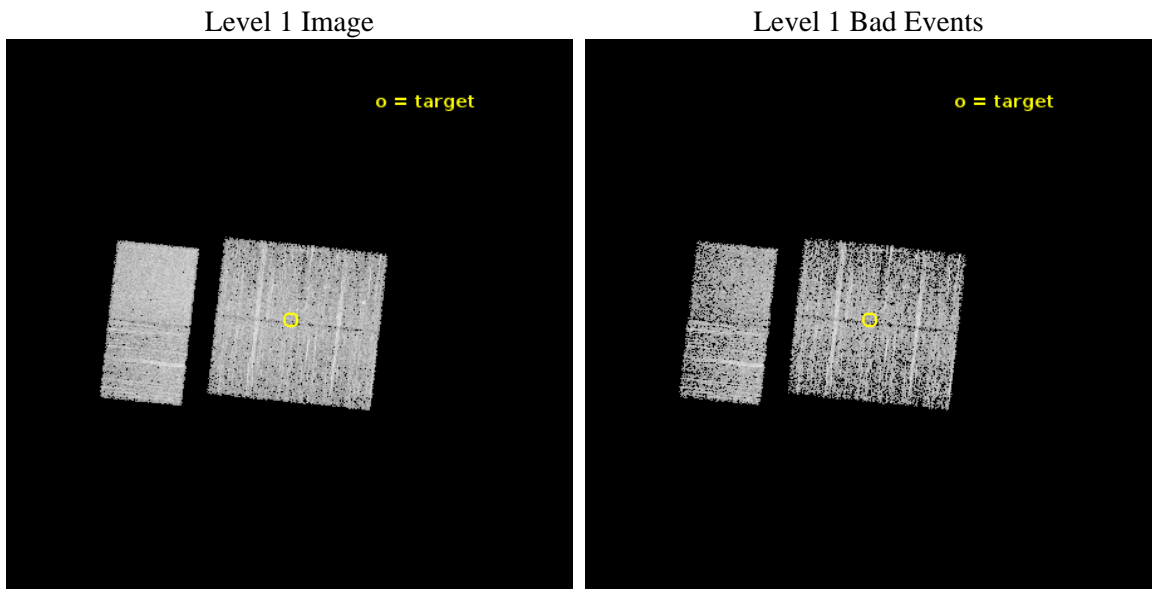
seq_num	801375	Sequence number
obs_id	16121	Observation id
title	The Massive Fossil Cluster RXJ1416.4+2315	Proposal title
observer	Dr. David Buote	Principal investigator
object	RXJ1416.4+2315 Offset 1	Source name
dtcycle	0	
cycle	P	events from which exps? Prim/Second/Both
ra_targ	213.945833	Observer's specified target RA [deg]
dec_targ	23.177444	Observer's specified target Dec [deg]
ra_nom	213.94934081486	Nominal RA [deg]
dec_nom	23.169942636275	Nominal Dec [deg]
roll_nom	276.06932435555	Nominal Roll [deg]
revision	1	Processing version of data
ontime	4966.3999815583	Sum of GTIs [s]
livetime	4903.5124345848	Livetime [s]
ontime0	4966.3999815583	Sum of GTIs [s]
ontime1	4966.3999815583	Sum of GTIs [s]
ontime2	4966.3999815583	Sum of GTIs [s]
ontime3	4966.3999815583	Sum of GTIs [s]
ontime6	4966.3999815583	Sum of GTIs [s]
ontime7	4966.3999815583	Sum of GTIs [s]
l2events	28249	Number of level 2 events



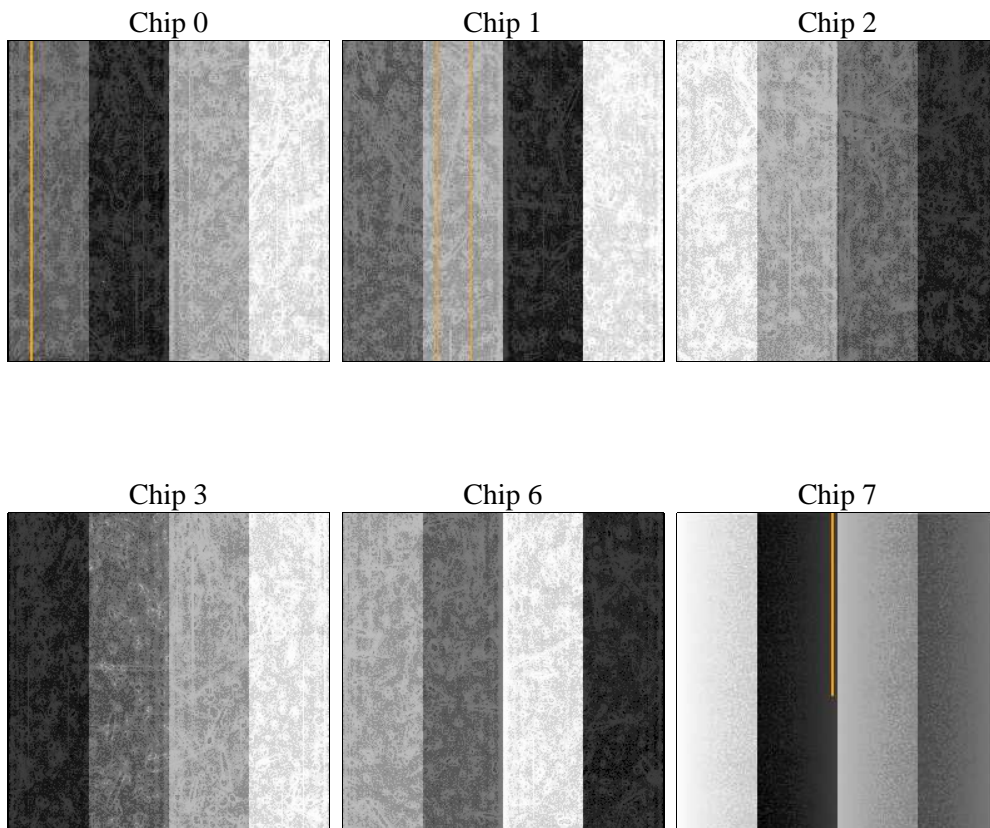
2 OBI

2.1 OBI

2.1.1 Images



2.1.2 Bias



2.1.3 Parameters

obi_num	0	Obi number	sched_exp_time	5000.000000	[s] Scheduled observation exposure time
ascdsver	10.2.4	Processing system revision	ontime	4966.3999815583	Sum of GTIs [s]
caldsver	4.6.2	 	ontime0	4966.3999815583	Sum of GTIs [s]
date	2014-08-31T11:11:55	Date and time of file creation	ontime1	4966.3999815583	Sum of GTIs [s]
revision	1	Processing version of data	ontime2	4966.3999815583	Sum of GTIs [s]
			ontime3	4966.3999815583	Sum of GTIs [s]
			ontime6	4966.3999815583	Sum of GTIs [s]
			ontime7	4966.3999815583	Sum of GTIs [s]
			l1events	156528	Number of level 1 events

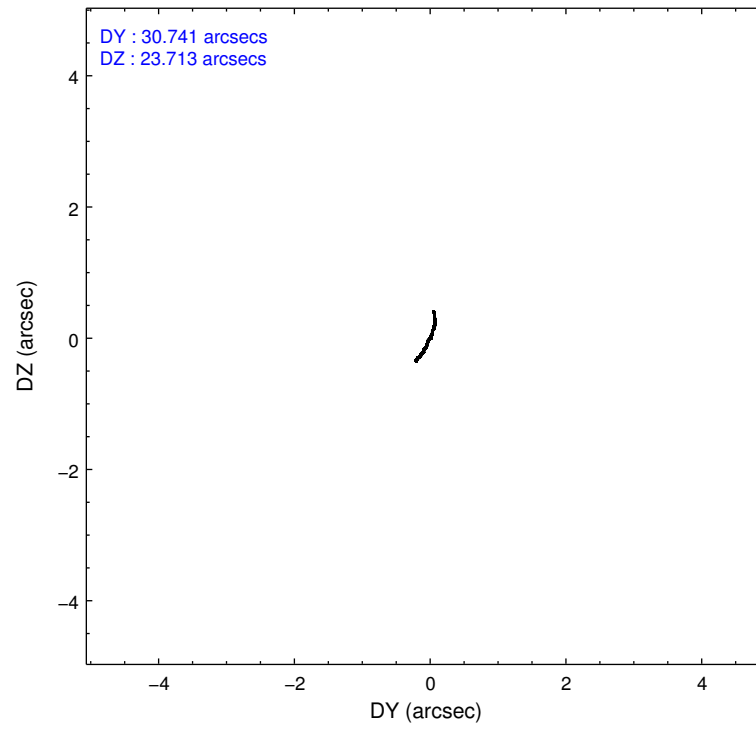
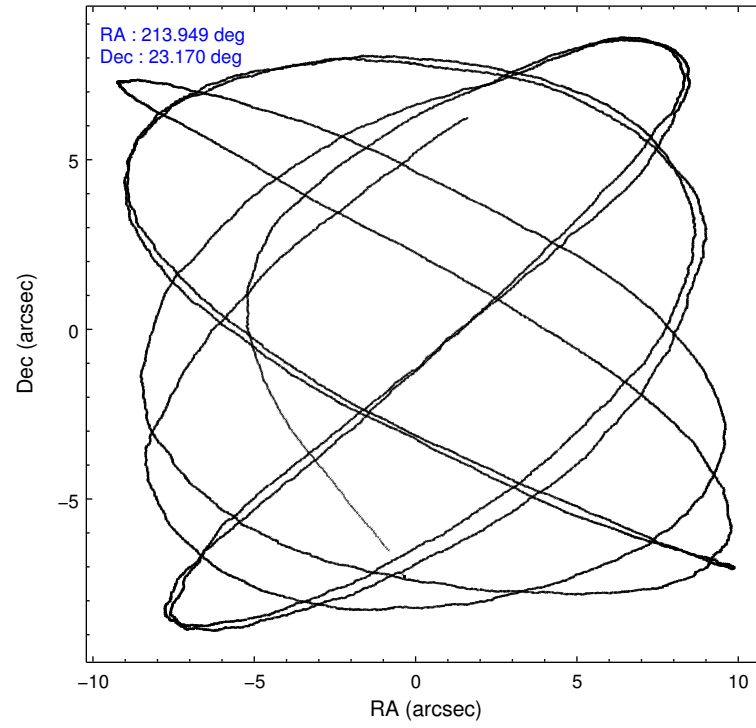
2.1.4 Events

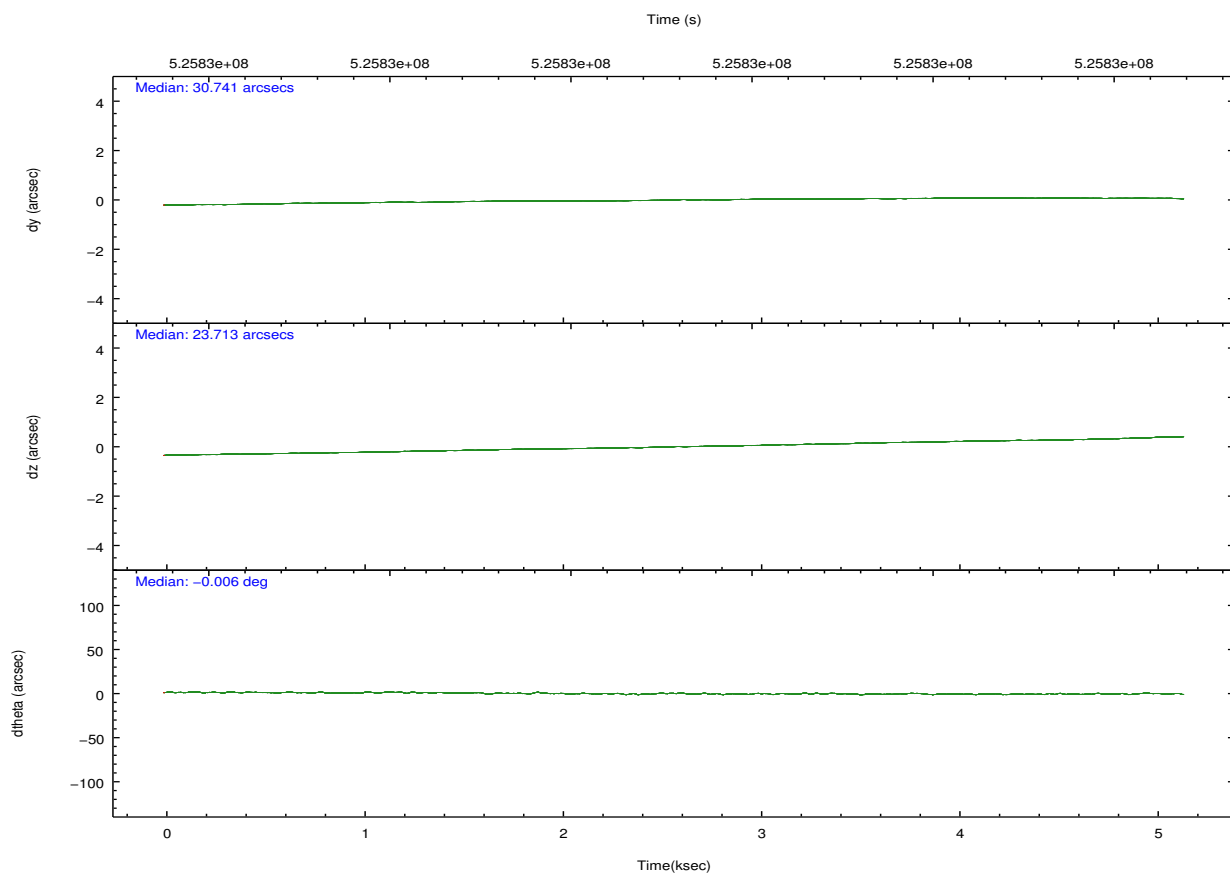
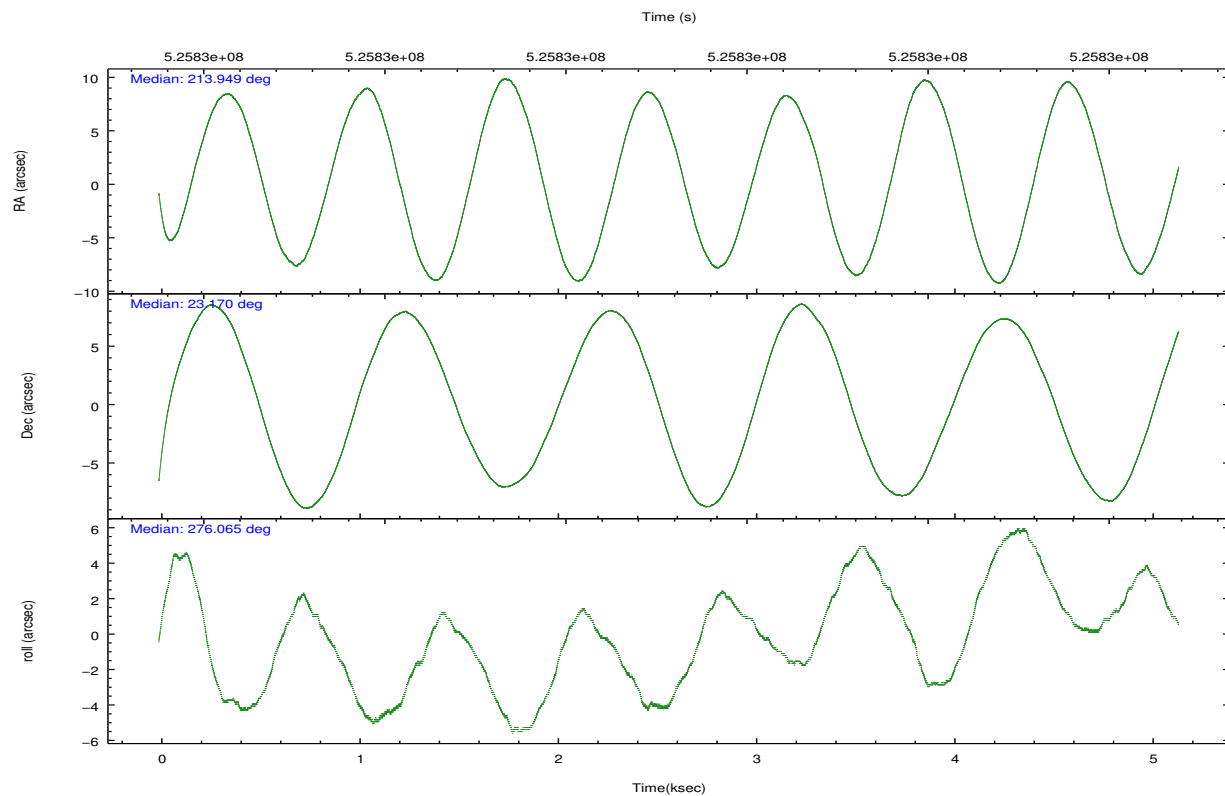
	ccd 0	ccd 1	ccd 2	ccd 3	ccd 6	ccd 7		ccd 0	ccd 1	ccd 2	ccd 3	ccd 6	ccd 7
level 1 events	23342	23203	24215	24454	26379	34935	grade 0 events	1050	1384	1148	1188	1031	1383
rejected events	20375	19737	21233	21424	23309	19417		4%	5%	4%	4%	3%	3%
rejected %	87%	85%	87%	87%	88%	55%	grade 1 events	12	9	8	14	16	37
								0%	0%	0%	0%	0%	0%
							grade 2 events	739	792	721	617	720	3223
								3%	3%	2%	2%	2%	9%
							grade 3 events	315	305	289	303	309	1352
								1%	1%	1%	1%	1%	3%
							grade 4 events	268	301	306	287	336	1312
								1%	1%	1%	1%	1%	3%
							grade 5 events	1225	1266	1139	1414	1351	3588
								5%	5%	4%	5%	5%	10%
							grade 6 events	599	688	522	640	676	8262
								2%	2%	2%	2%	2%	23%
							grade 7 events	19134	18458	20082	19991	21940	15778
								81%	79%	82%	81%	83%	45%

2.2 Compared Parameters

Parameter	Planned	Actual	Parameter	Planned	Actual
Instrument	ACIS	ACIS	Obspar format version number	7	7
Detector	ACIS-012367	ACIS-012367	Obspar file type	PREDICTED	ACTUAL
Grating	NONE	NONE	Obspar update status	NONE	UPDATED
Data mode	VFAINT	VFAINT	CCD I0 on	Y	Y
Observation mode	POINTING	POINTING	CCD I1 on	Y	Y
[deg] Pointing RA	213.931619	213.9493408148604	CCD I2 on	Y	Y
[deg] Pointing Dec	23.192185	23.16994263627547	CCD I3 on	Y	Y
[deg] Pointing Roll	275.867628	276.0693243555461	CCD S0 on	N	N
[mm] SIM focus pos	-0.782348	-0.7809083437167272	CCD S1 on	N	N
[mm] SIM defocus	0	0.001439871863259334	CCD S2 on	O2	Y
[mm] SIM translation stage pos	-233.592463	-233.5874344608287	CCD S3 on	O1	Y
[mm] SIM translation stage offset	0	-0.005018542100998502	CCD S4 on	N	N
[s] Observation start time (MET)	525827136.184000	525826153.67307	CCD S5 on	N	N
Observation start date	2014-08-30T23:04:29	2014-08-30T22:49:13	Number of optional ACIS chips dropped	0	0
[s] Observation end time (MET)	525832136.184000	525832964.79844	On-chip summing requested	N	N
Observation end date	2014-08-31T00:27:49	2014-08-31T00:42:44	Subarray requested	NONE	NONE
Read mode	TIMED	TIMED	Alternating exposures requested	N	N
			[s] Primary exposure time	0.000000	3.2

2.3 Aspect



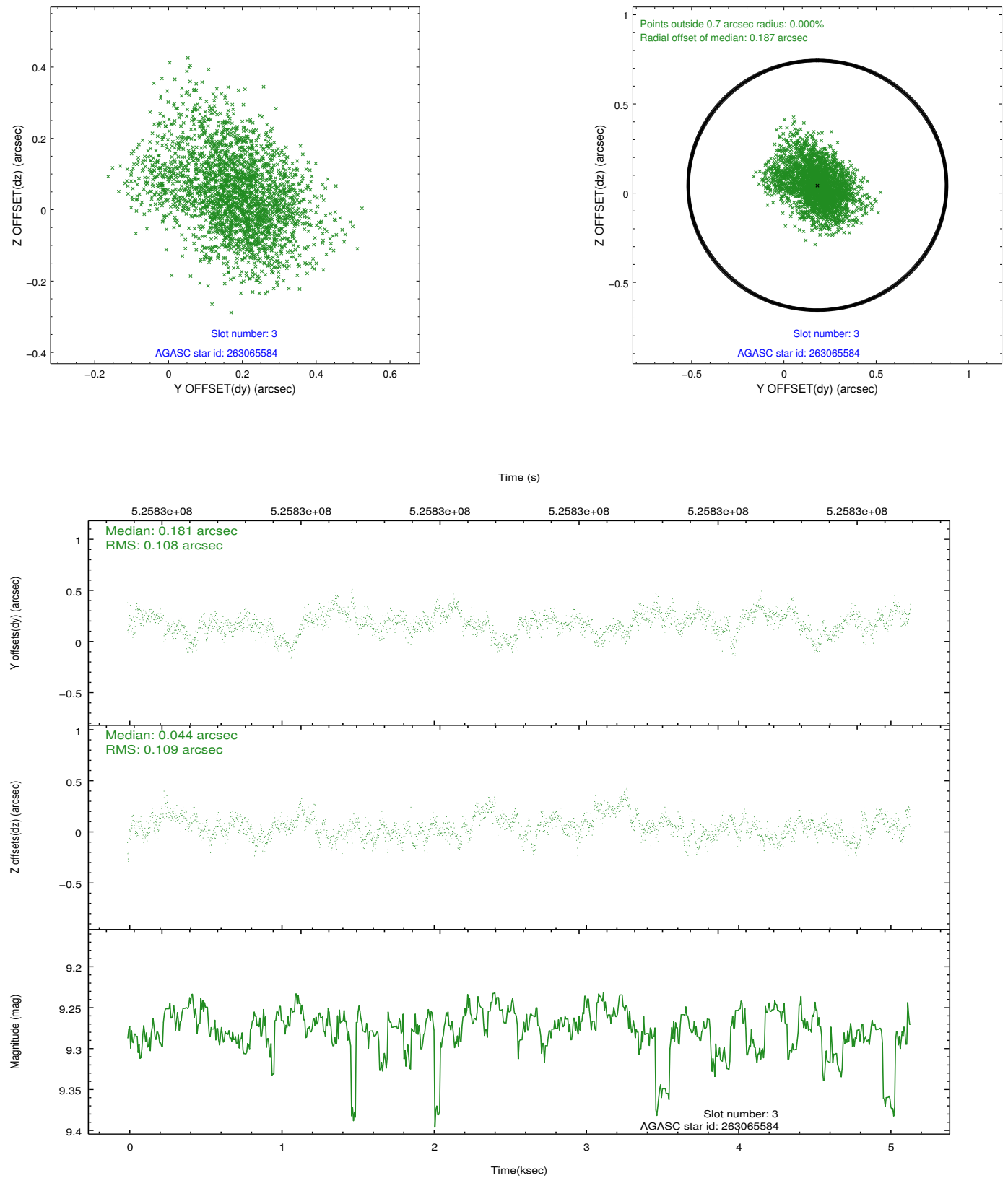


Slot Statistics

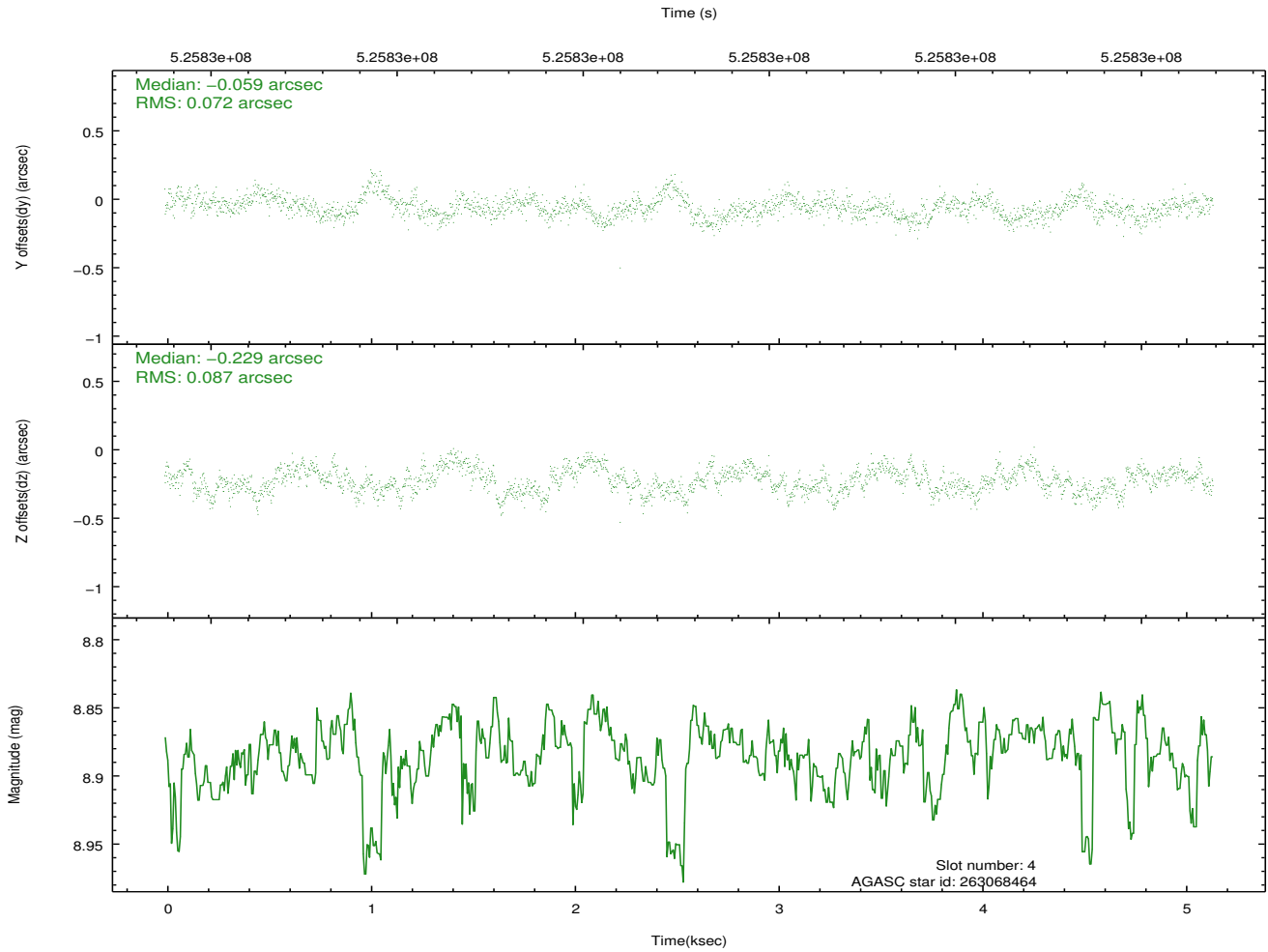
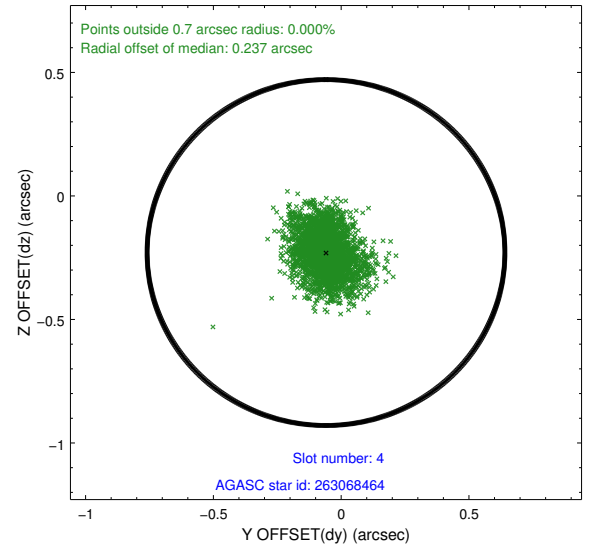
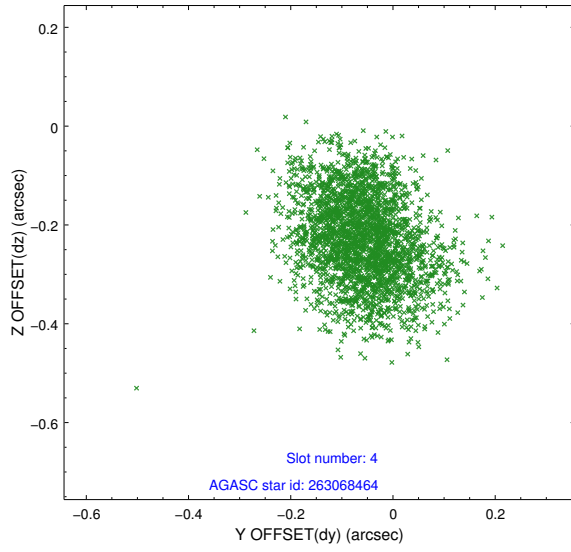
slot	status	id	mag	n_pts	med_dy	med_dz	dr1	dr2	ra	dec	mean_y	mean_z
0	FID	ACIS-I-1	7.05	1255	0.010	0.062	0.012	0.022	0.000000	0.000000	908.38	-847.41
1	FID	ACIS-I-5	7.04	1255	-0.287	0.006	0.009	0.017	0.000000	0.000000	-1839.52	1049.23
2	FID	ACIS-I-6	7.04	1255	0.185	0.001	0.010	0.015	0.000000	0.000000	372.62	1695.22
3	GUIDE	263065584	9.28	2510	0.181	0.044	0.163	0.271	213.433560	22.662944	1723.71	-1840.16
4	GUIDE	263068464	8.88	2508	-0.059	-0.229	0.121	0.194	214.145675	22.675072	1925.71	516.74
5	GUIDE	263068776	8.87	2509	-0.148	-0.219	0.096	0.156	214.499885	23.608632	-1302.31	2018.58
6	GUIDE	263070912	7.07	2509	-0.058	0.368	0.092	0.151	213.756514	23.686063	-1827.84	-391.39
7	GUIDE	263071296	9.15	2507	0.087	0.026	0.120	0.196	213.703398	22.803526	1314.13	-896.16

2.4 Star Slots

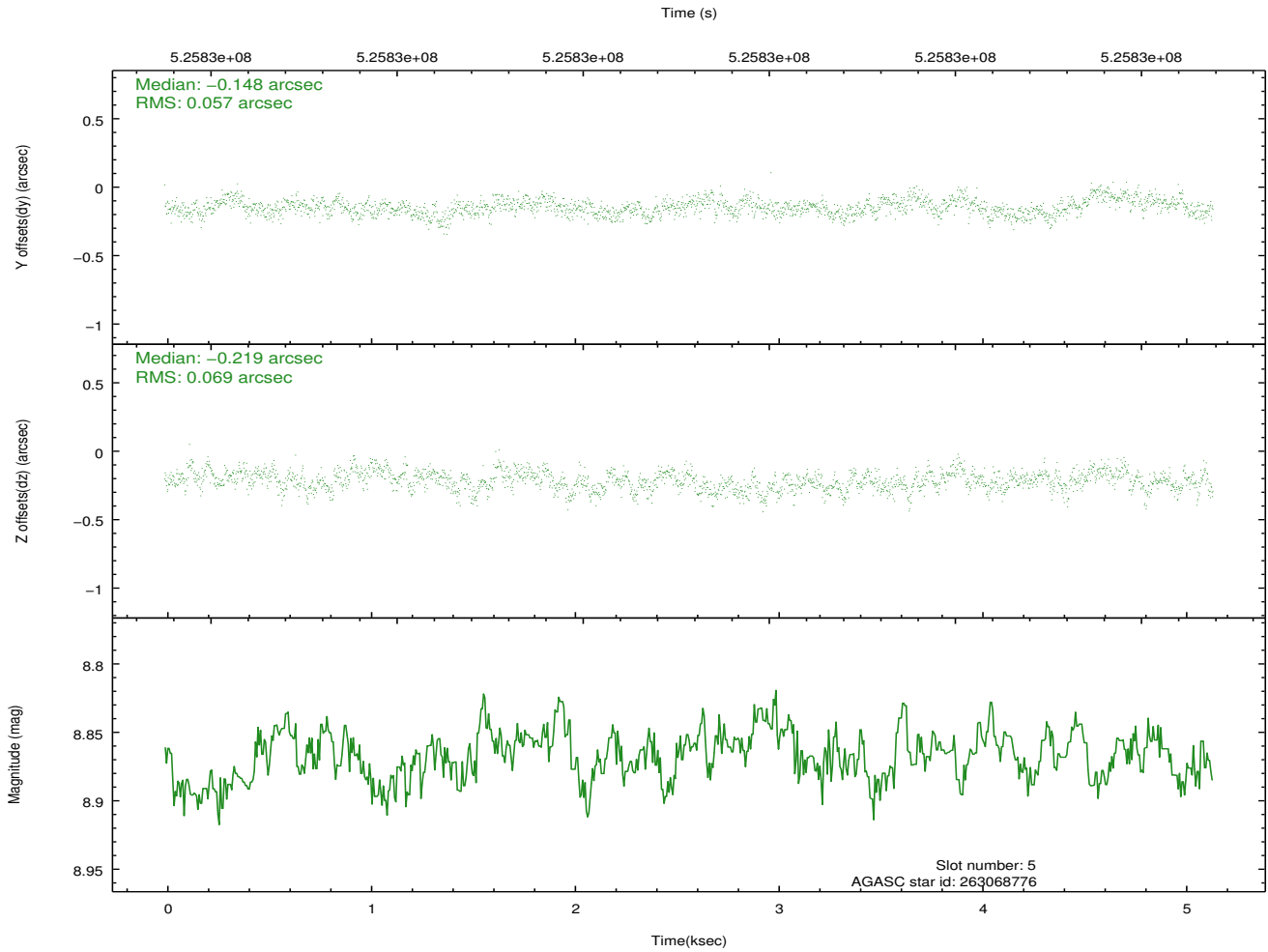
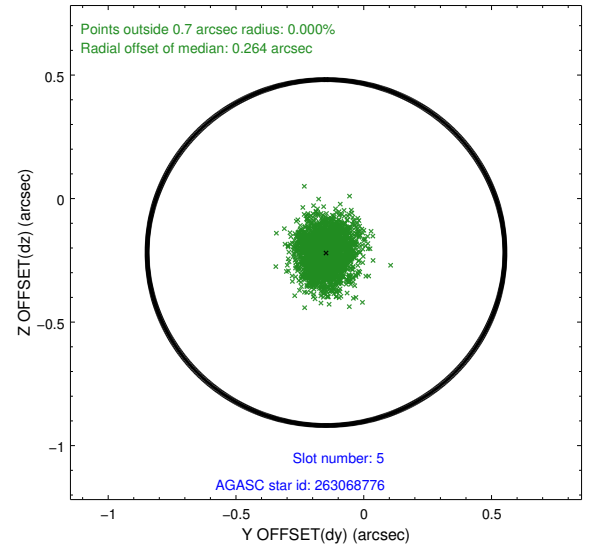
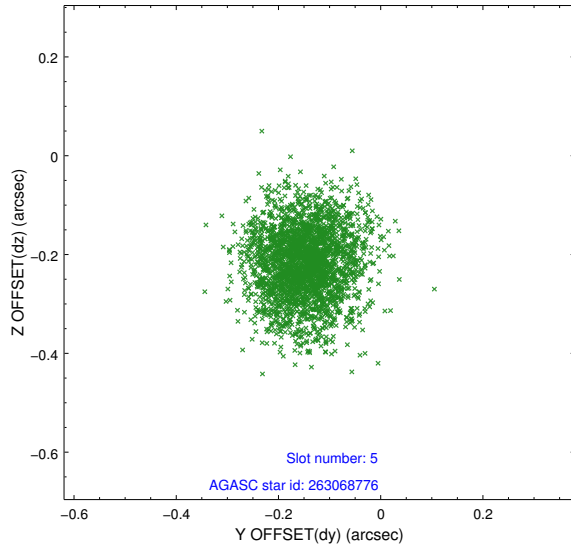
2.4.1 Slot 3



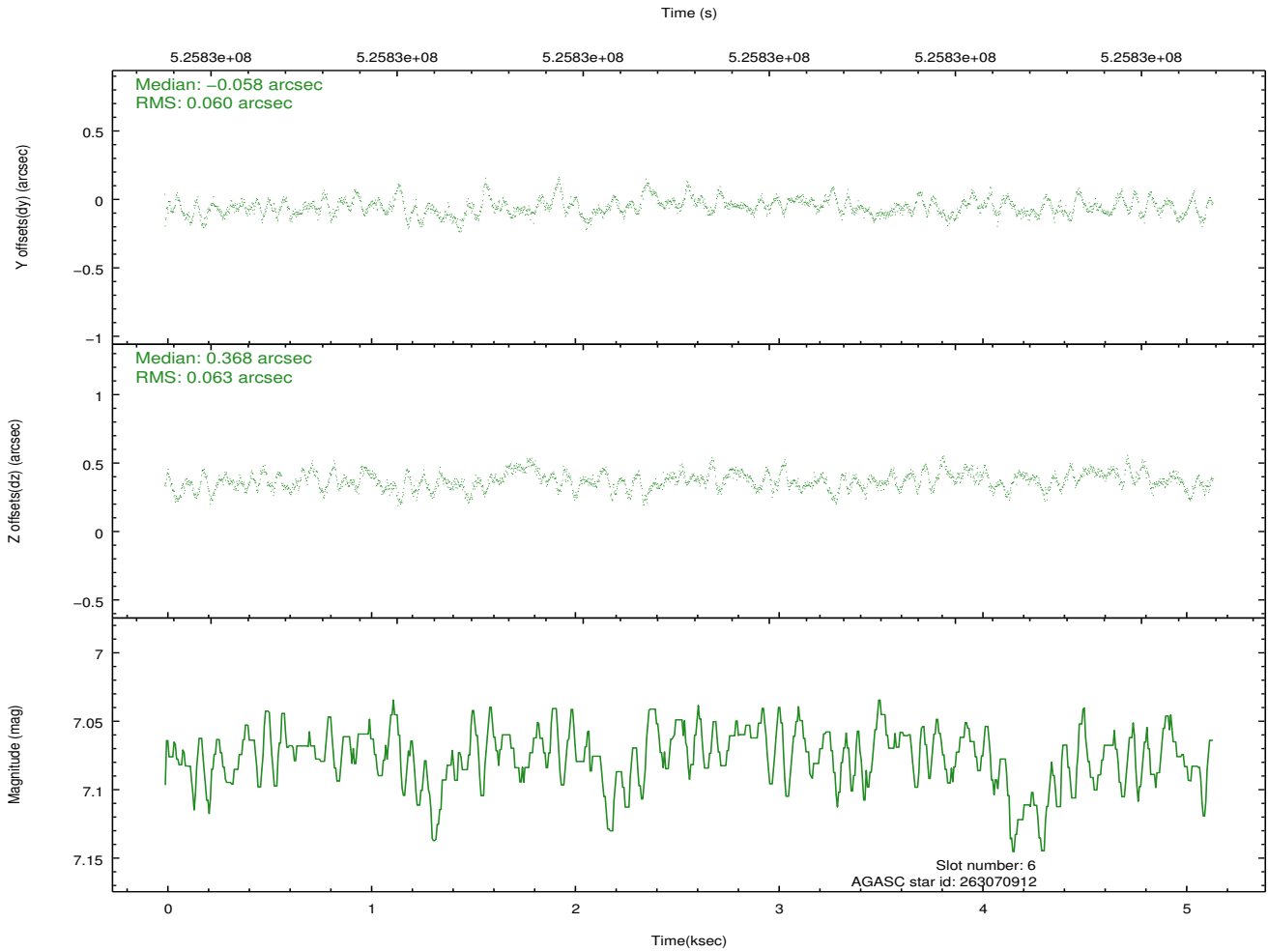
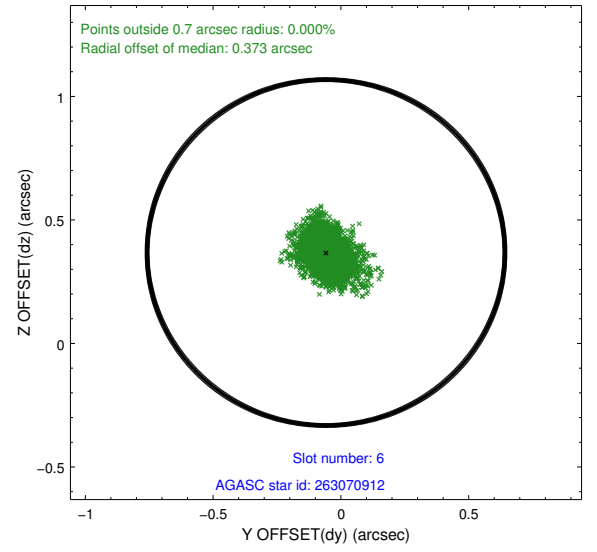
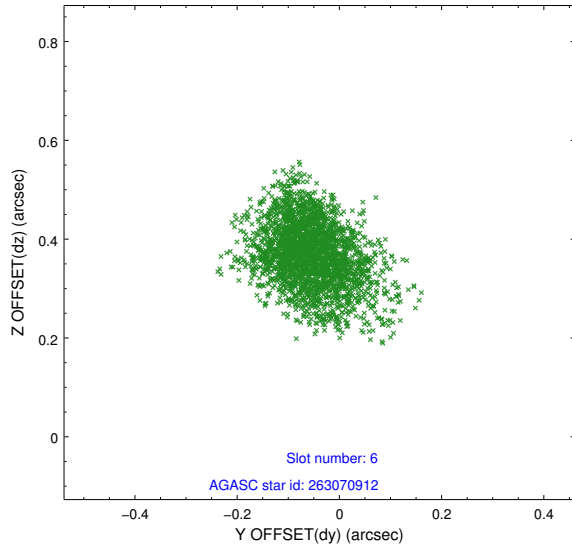
2.4.2 Slot 4



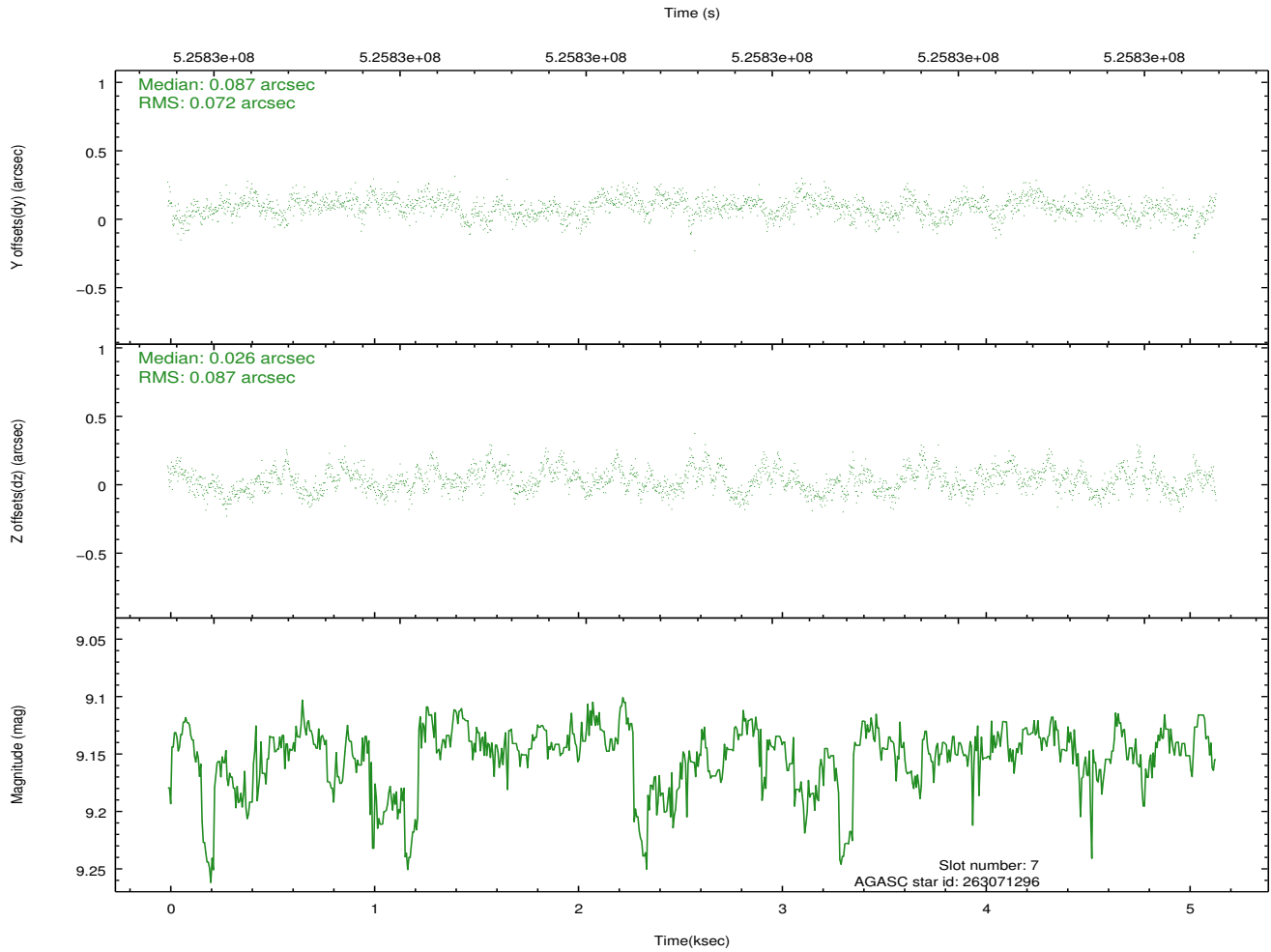
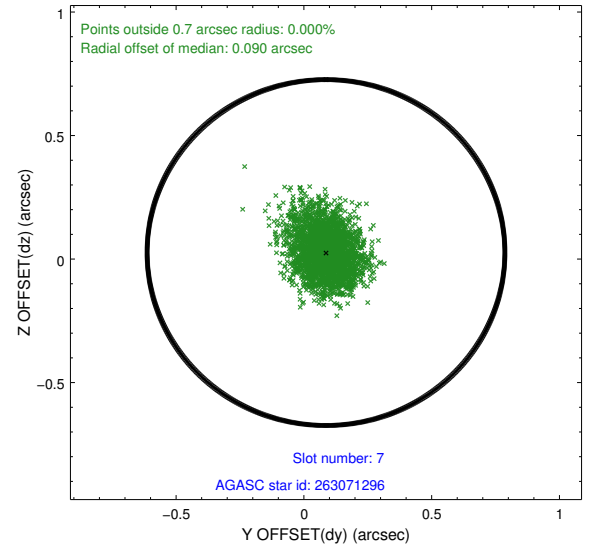
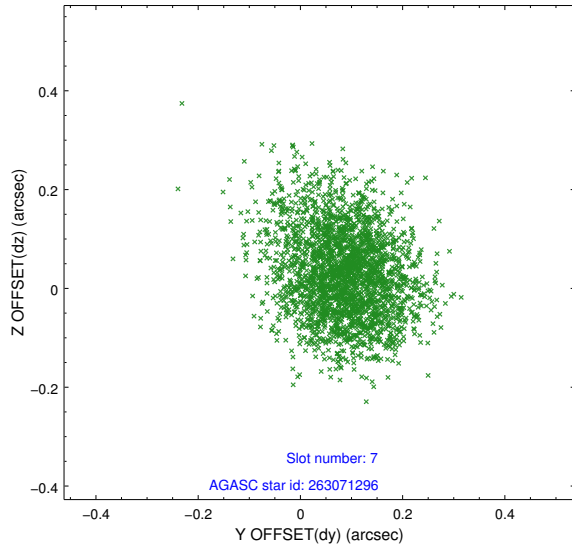
2.4.3 Slot 5



2.4.4 Slot 6

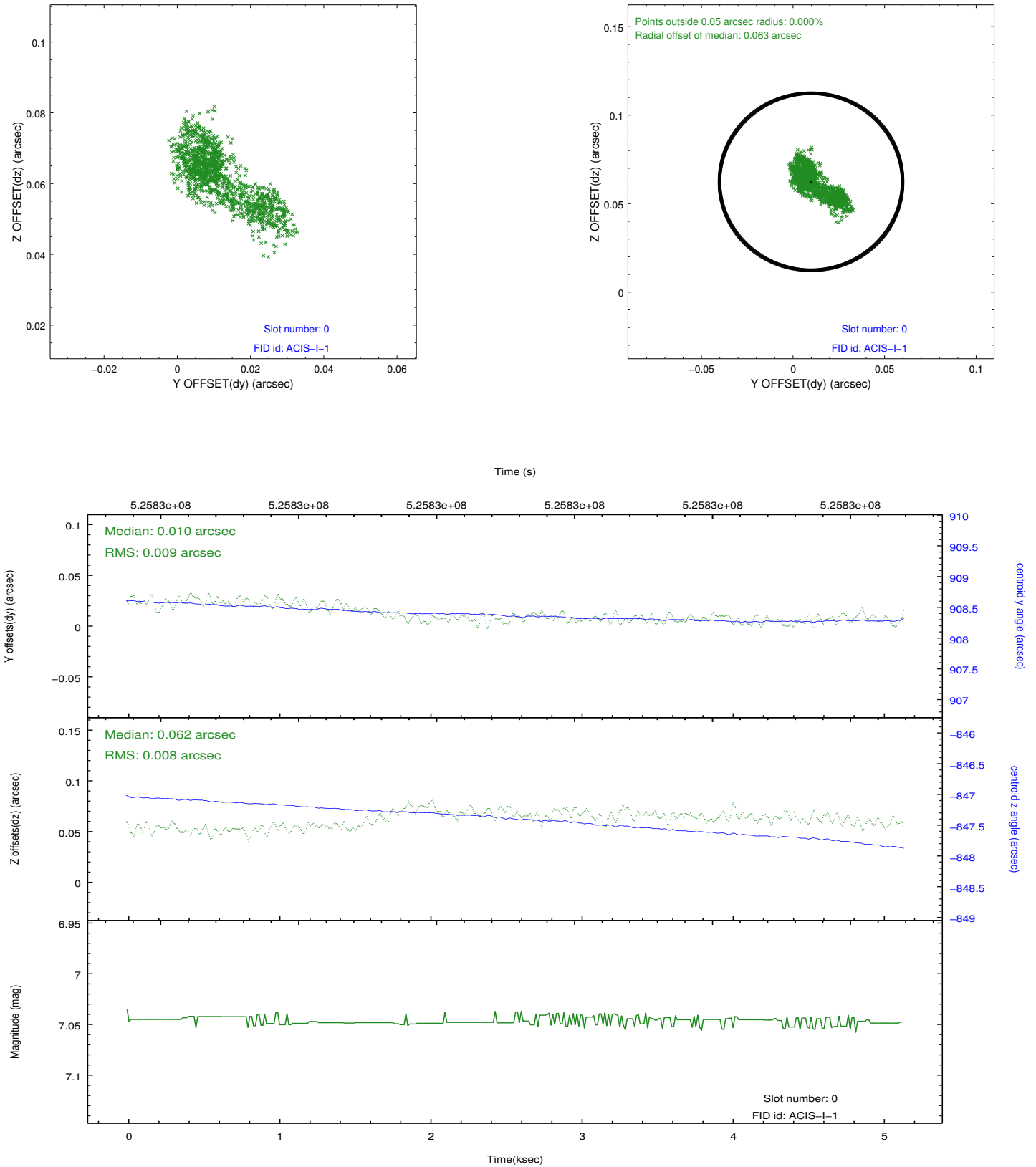


2.4.5 Slot 7

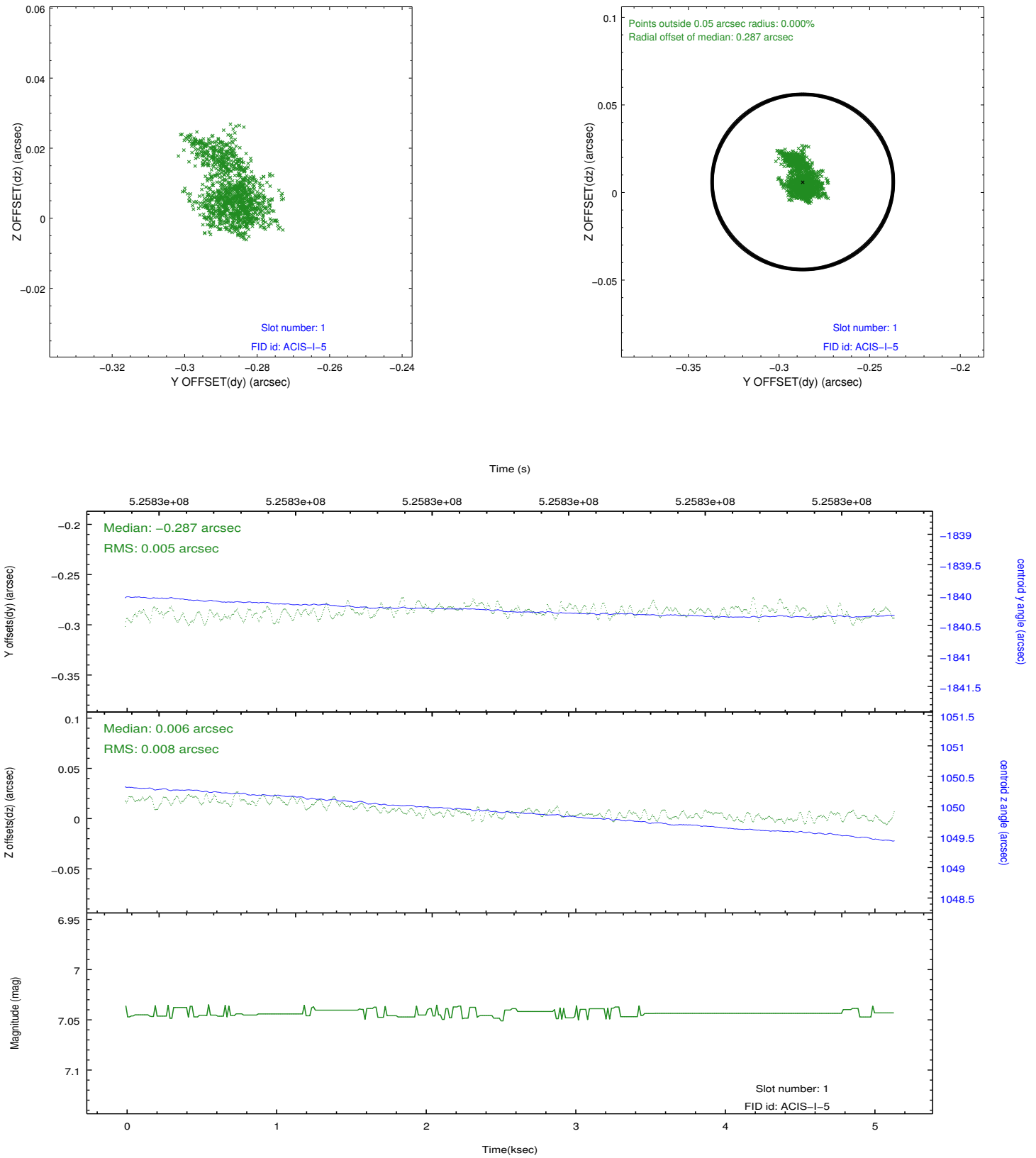


2.5 FID Slots

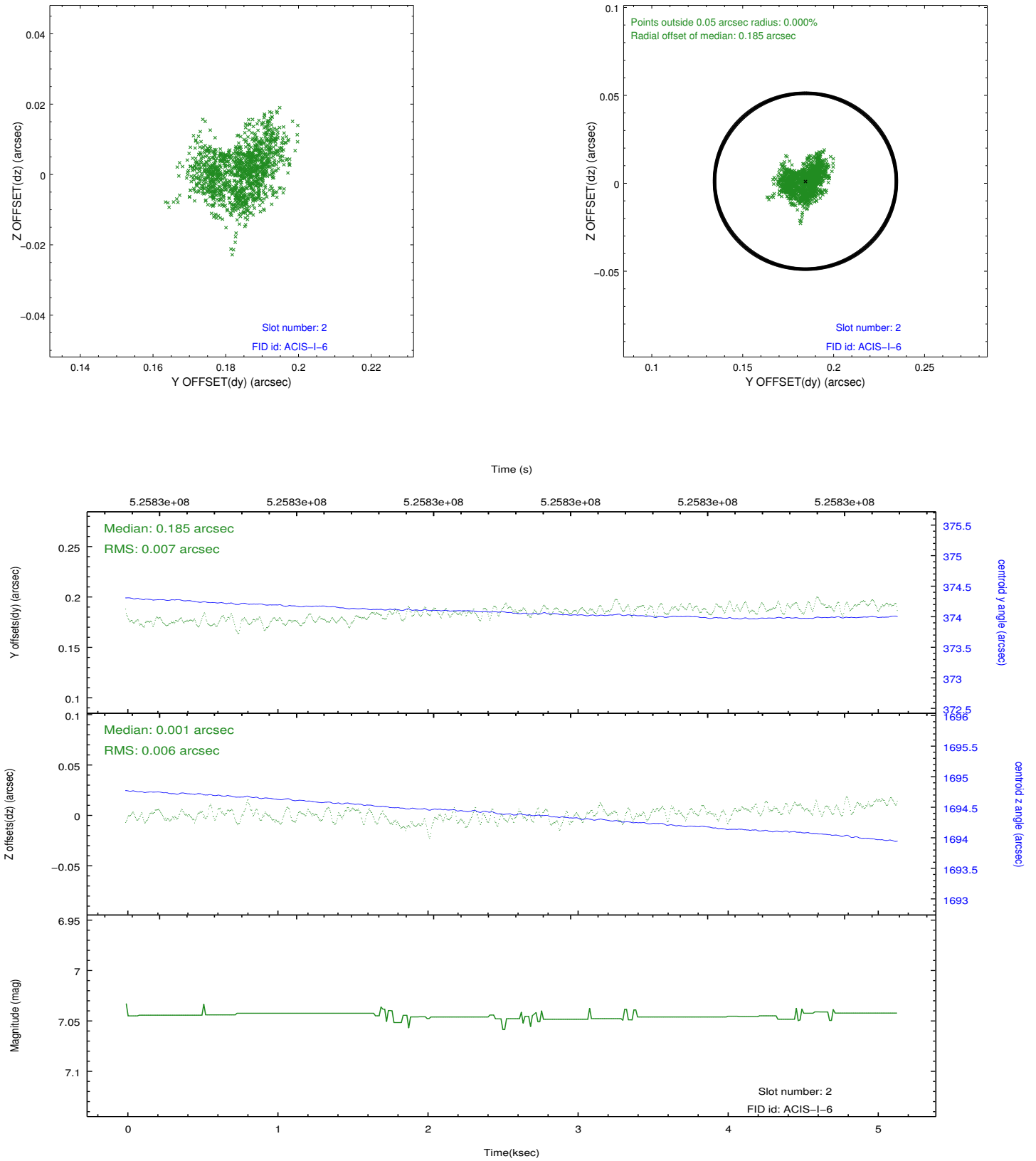
2.5.1 Slot 0



2.5.2 Slot 1



2.5.3 Slot 2



A Summary

A.1 Status

V&V Scientist	Beth Sundheim
V&V Date (YYYY-MM-DD)	2014.09.01
V&V Edition	1
V&V Disposition and Status	OK
V&V Charge Time	4.9663999815583

A.2 Comments