

# V&V Reference Report

## L2 ASCDS Version : 10.2.4

Observation 16058 - L2 Version 1  
Chandra X-Ray Center

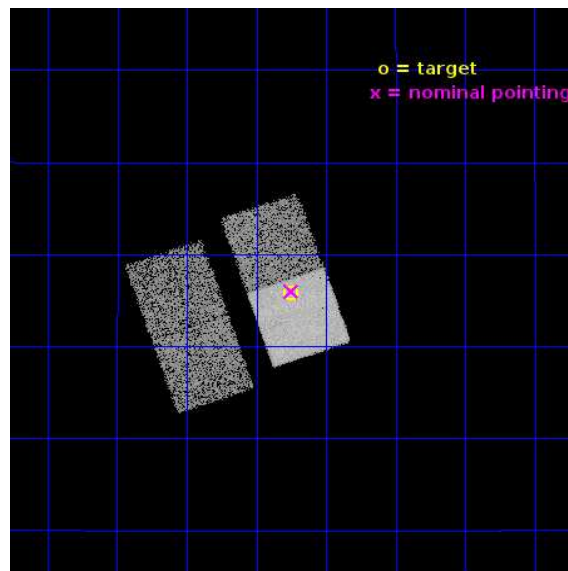
L2 Processing Date : Oct 19 2014

## Contents

<b>1</b>	<b>Front</b>	<b>2</b>
<b>2</b>	<b>OBI</b>	<b>3</b>
2.1	OBI . . . . .	3
2.1.1	Images . . . . .	3
2.1.2	Bias . . . . .	3
2.1.3	Parameters . . . . .	4
2.1.4	Events . . . . .	4
2.2	Compared Parameters . . . . .	5
2.3	Aspect . . . . .	6
2.4	Star Slots . . . . .	9
2.4.1	Slot 3 . . . . .	9
2.4.2	Slot 4 . . . . .	10
2.4.3	Slot 5 . . . . .	11
2.4.4	Slot 6 . . . . .	12
2.4.5	Slot 7 . . . . .	13
2.5	FID Slots . . . . .	14
2.5.1	Slot 0 . . . . .	14
2.5.2	Slot 1 . . . . .	15
2.5.3	Slot 2 . . . . .	16
<b>A</b>	<b>Summary</b>	<b>17</b>
A.1	Status . . . . .	17
A.2	Comments . . . . .	17

# 1 Front

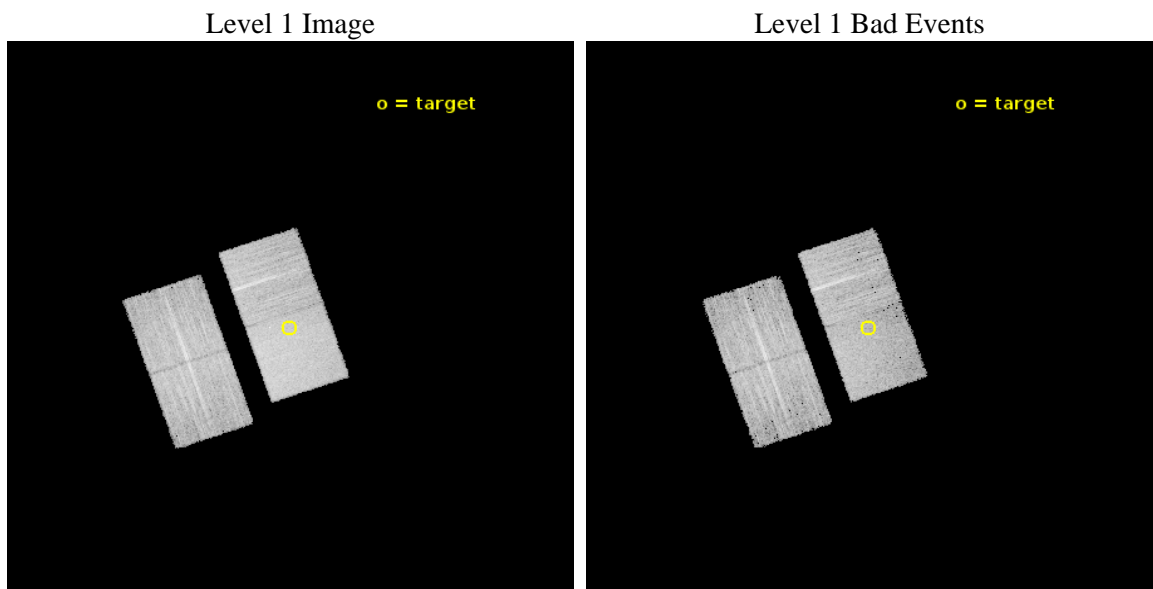
seq_num	702952	Sequence number
obs_id	16058	Observation id
title	Continuing the Chandra 3CR Snapshot Survey: 23 Radio Sources with 0.5	Proposal title
observer	Dr. Francesco Massaro	Principal investigator
object	3C225B	Source name
dtcycle	0	&#160
cycle	P	events from which exps? Prim/Second/Both
ra_targ	145.564167	Observer's specified target RA [deg]
dec_targ	13.764028	Observer's specified target Dec [deg]
ra_nom	145.56219386411	Nominal RA [deg]
dec_nom	13.766486812409	Nominal Dec [deg]
roll_nom	71.000701253182	Nominal Roll [deg]
revision	1	Processing version of data
ontime	12074.500092864	Sum of GTIs [s]
livetime	11916.737860033	Livetime [s]
ontime2	12074.500092864	Sum of GTIs [s]
ontime3	12074.500092864	Sum of GTIs [s]
ontime6	12074.500092864	Sum of GTIs [s]
ontime7	12074.500092864	Sum of GTIs [s]
l2events	57294	Number of level 2 events



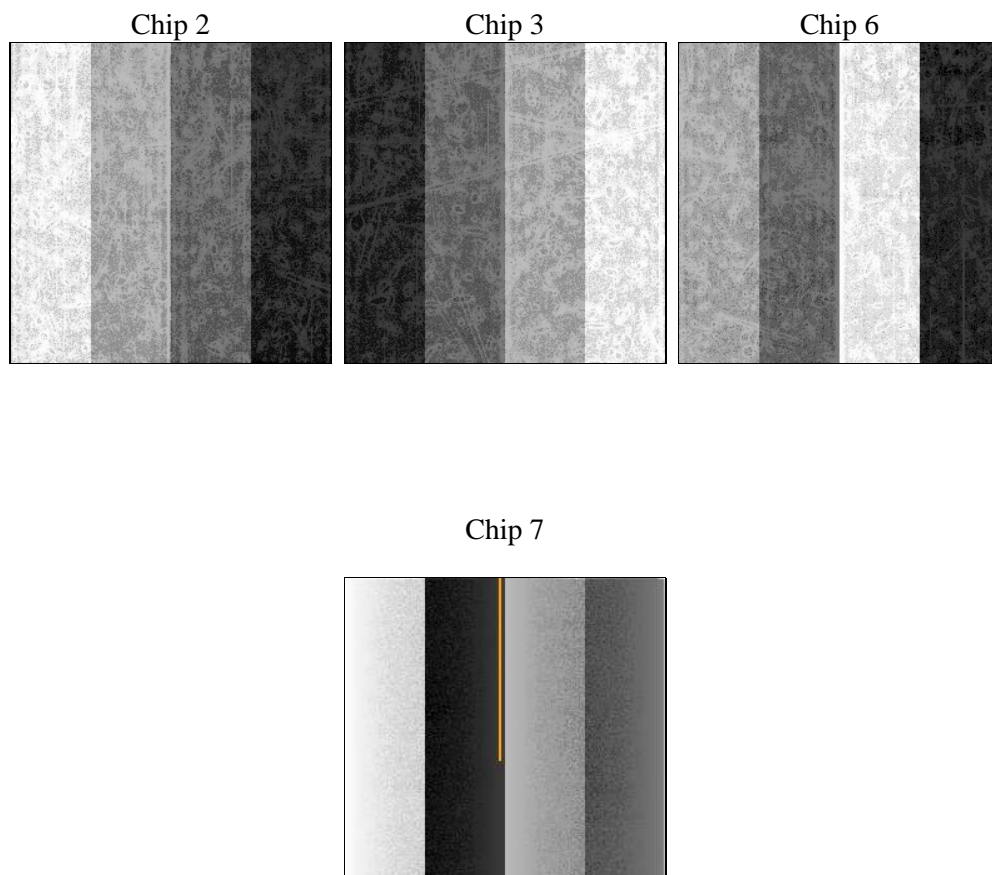
## 2 OBI

### 2.1 OBI

#### 2.1.1 Images



#### 2.1.2 Bias



### 2.1.3 Parameters

obi_num	0	Obi number	sched_exp_time	12000.068000	[s] Scheduled observation exposure time
ascdsver	10.2.4	Processing system revision	ontime	12074.500092864	Sum of GTIs [s]
caldsver	4.6.3	&#160	ontime2	12074.500092864	Sum of GTIs [s]
date	2014-10-19T12:54:30	Date and time of file creation	ontime3	12074.500092864	Sum of GTIs [s]
revision	1	Processing version of data	ontime6	12074.500092864	Sum of GTIs [s]
			ontime7	12074.500092864	Sum of GTIs [s]
			l1events	285864	Number of level 1 events

### 2.1.4 Events

	ccd 2	ccd 3	ccd 6	ccd 7
level 1 events	64545	63159	68124	90036
rejected events	57168	56051	60116	51256
rejected %	88%	88%	88%	56%

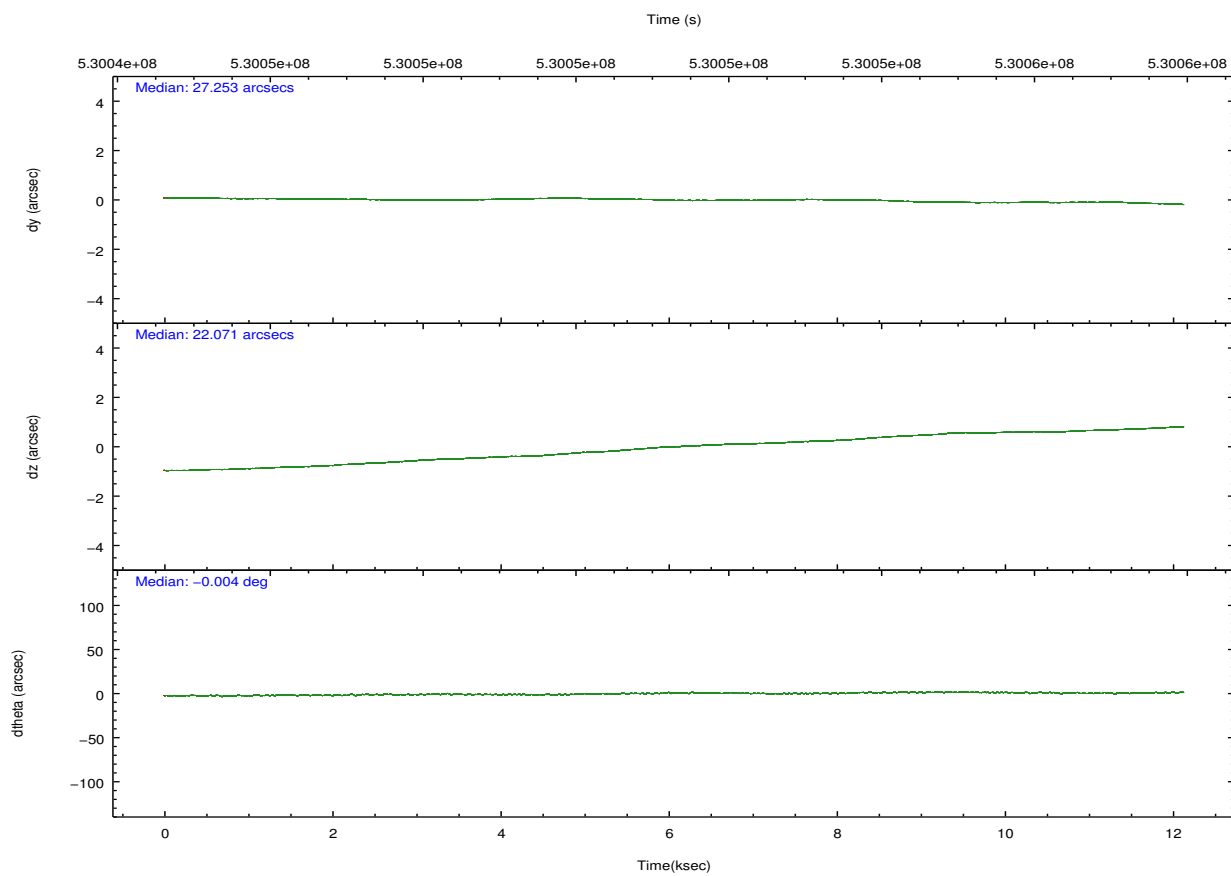
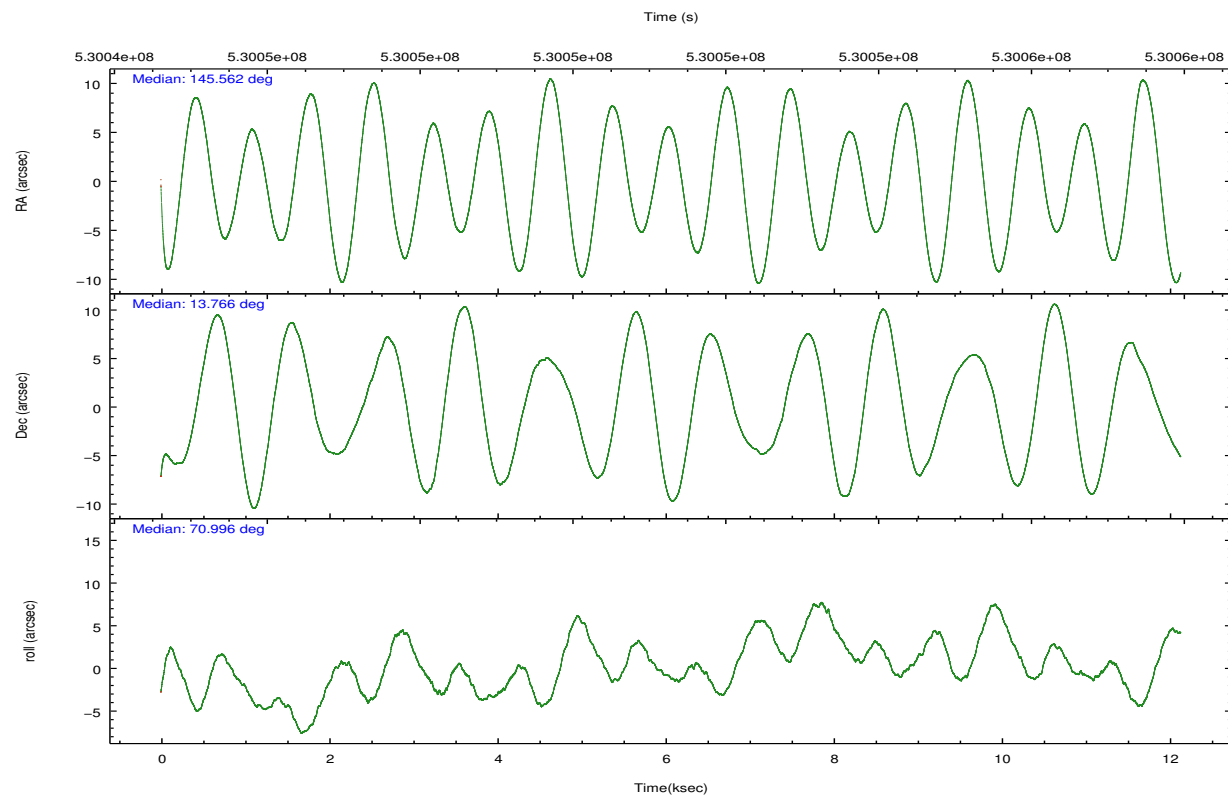
	ccd 2	ccd 3	ccd 6	ccd 7
grade 0 events	2542	2405	2695	3339
	3%	3%	3%	3%
grade 1 events	47	35	34	105
	0%	0%	0%	0%
grade 2 events	1832	1614	1818	8116
	2%	2%	2%	9%
grade 3 events	742	858	793	3143
	1%	1%	1%	3%
grade 4 events	817	735	831	3096
	1%	1%	1%	3%
grade 5 events	2772	3359	3338	9074
	4%	5%	4%	10%
grade 6 events	1448	1499	1877	21115
	2%	2%	2%	23%
grade 7 events	54345	52654	56738	42048
	84%	83%	83%	46%



## 2.2 Compared Parameters

Parameter	Planned	Actual	Parameter	Planned	Actual
Instrument	ACIS	ACIS	Obspar format version number	7	7
Detector	ACIS-2367	ACIS-2367	Obspar file type	PREDICTED	ACTUAL
Grating	NONE	NONE	Obspar update status	NONE	UPDATED
Data mode	FAINT	FAINT	CCD I0 on	N	N
Observation mode	POINTING	POINTING	CCD I1 on	N	N
[deg] Pointing RA	145.567969	145.5621938641123	CCD I2 on	O1	Y
[deg] Pointing Dec	13.739629	13.76648681240893	CCD I3 on	O2	Y
[deg] Pointing Roll	70.842705	71.00070125318238	CCD S0 on	N	N
[mm] SIM focus pos	-0.684267	-0.6828225247311905	CCD S1 on	N	N
[mm] SIM defocus	0	0.001444936568705701	CCD S2 on	Y	Y
[mm] SIM translation stage pos	-190.132523	-190.1425803651734	CCD S3 on	Y	Y
[mm] SIM translation stage offset	0	0.01005778216563158	CCD S4 on	N	N
[s] Observation start time (MET)	530045337.184000	530044091.94486	CCD S5 on	N	N
Observation start date	2014-10-18T18:47:50	2014-10-18T18:28:11	Number of optional ACIS chips dropped	0	0
[s] Observation end time (MET)	530057337.184000	530057563.0081	On-chip summing requested	N	N
Observation end date	2014-10-18T22:07:50	2014-10-18T22:12:43	Subarray requested	NONE	NONE
Read mode	TIMED	TIMED	Alternating exposures requested	N	N
			[s] Primary exposure time	0.000000	3.1

## 2.3 Aspect

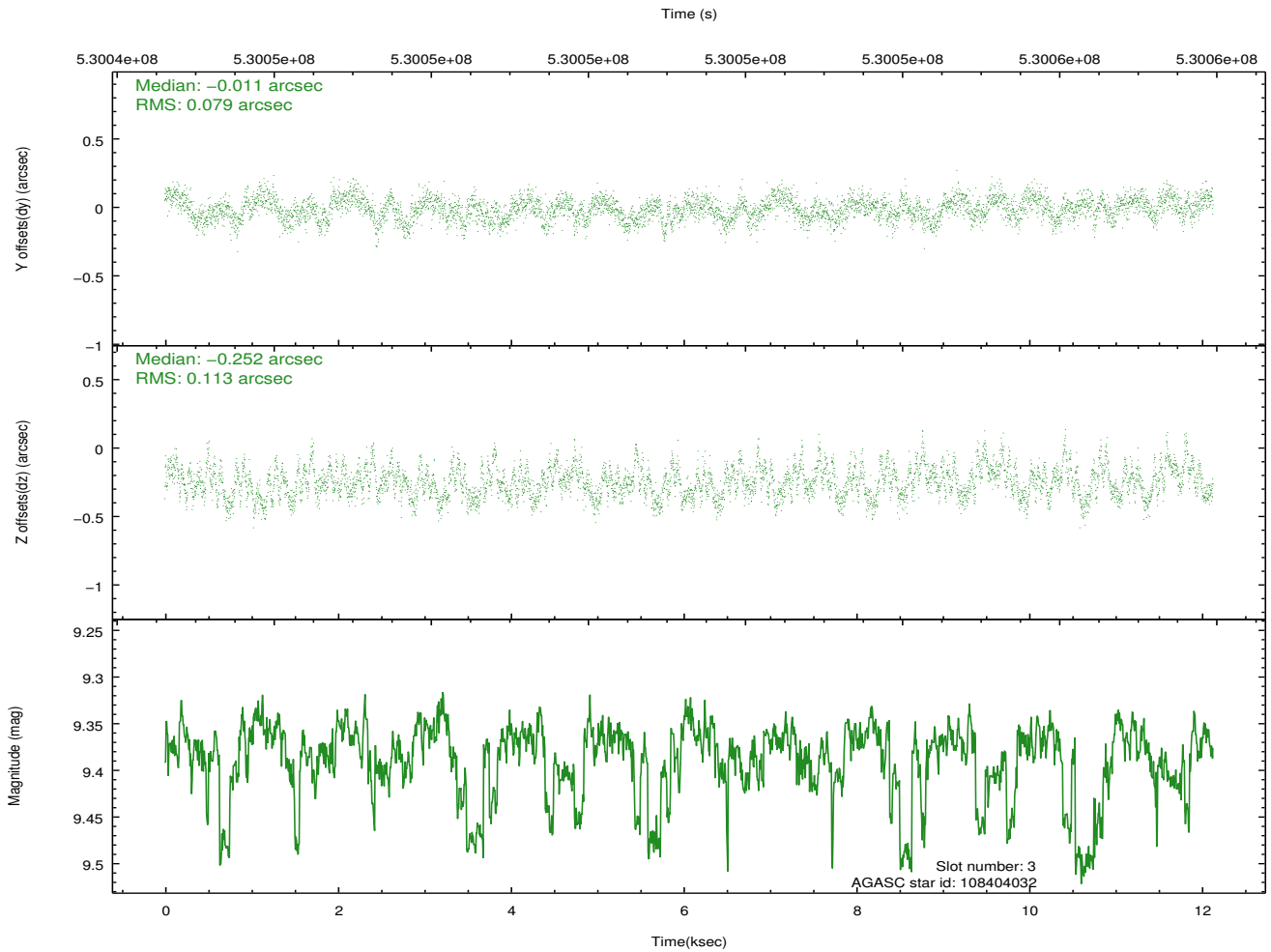
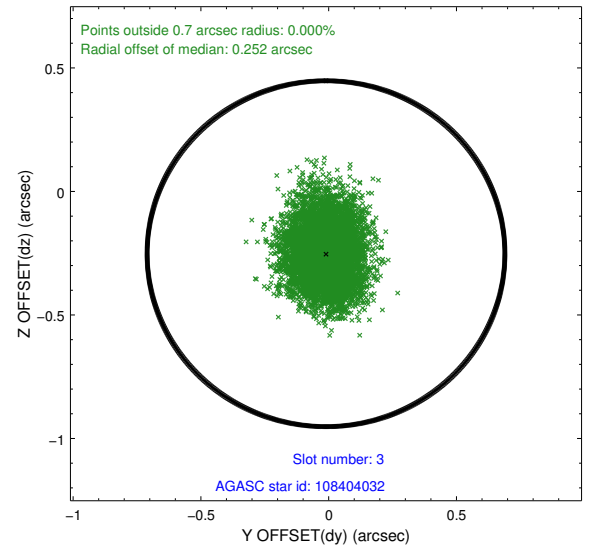
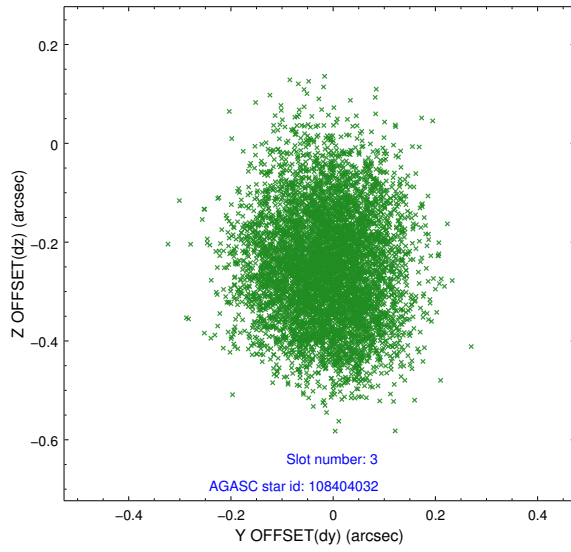


### Slot Statistics

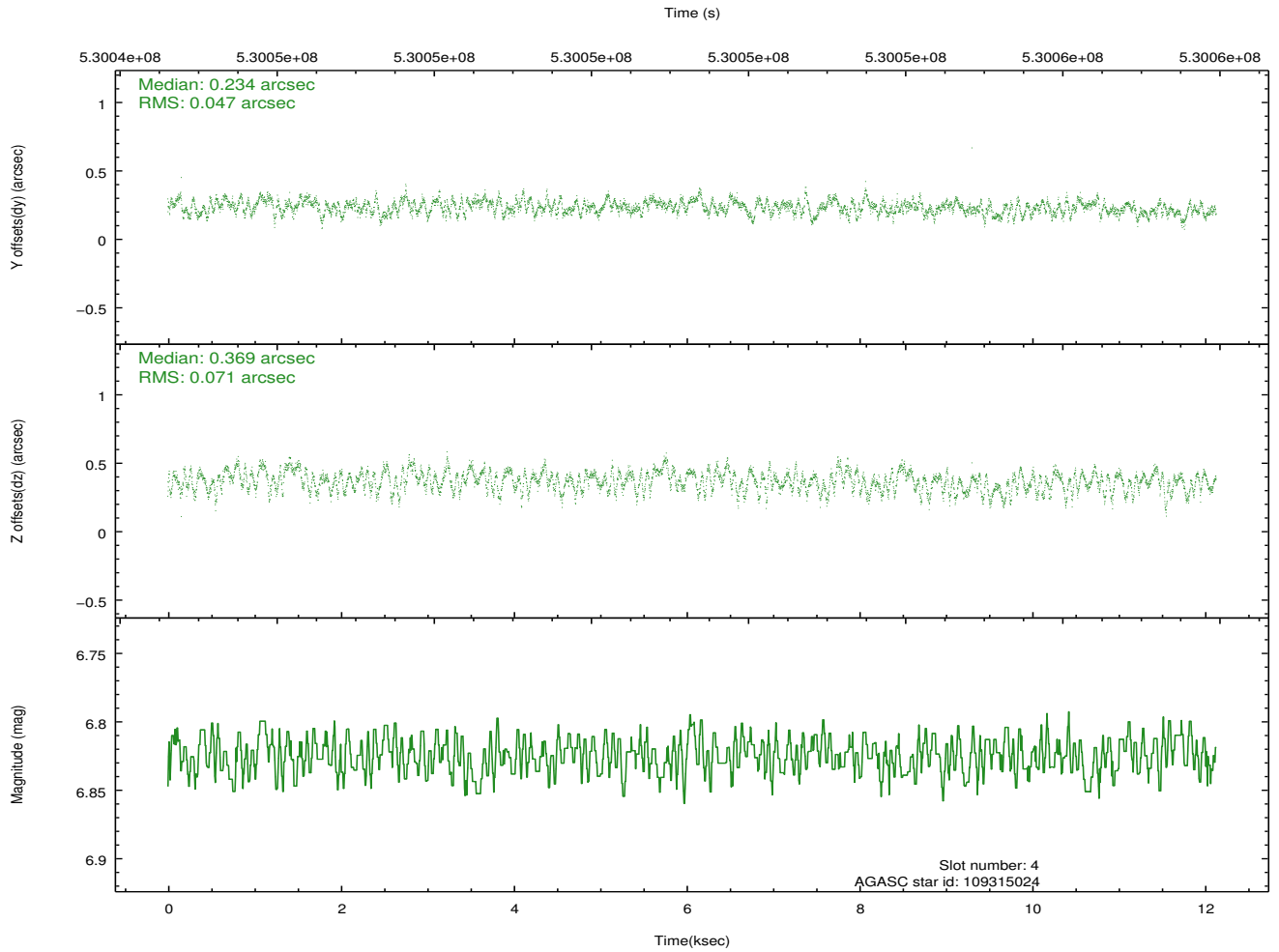
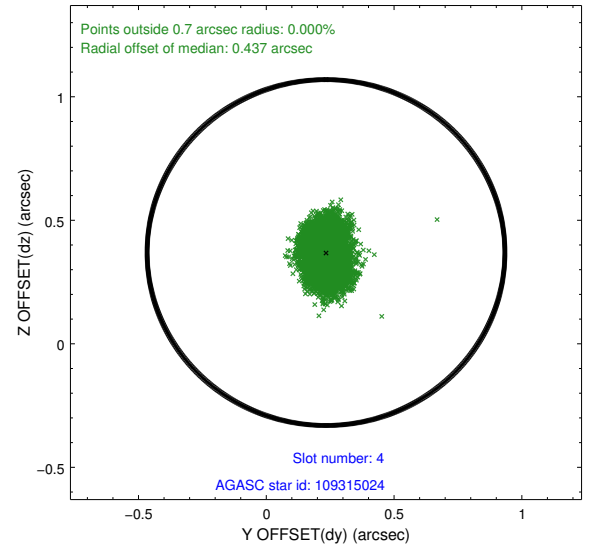
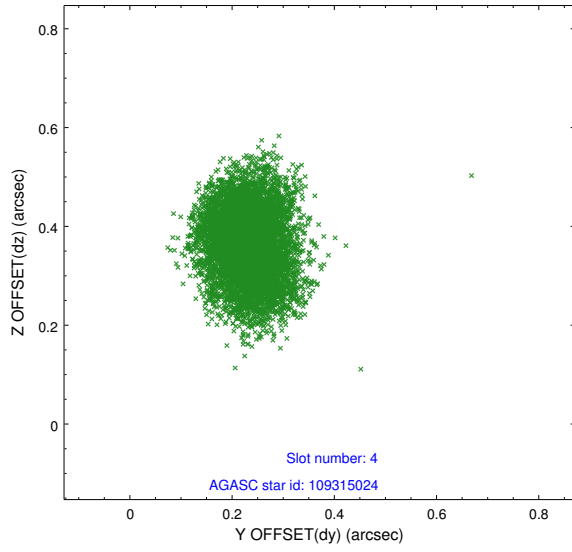
slot	status	id	mag	n_pts	med_dy	med_dz	dr1	dr2	ra	dec	mean_y	mean_z
0	FID	ACIS-S-2	7.03	2960	-0.180	-0.061	0.028	0.039	0.000000	0.000000	-780.72	-1743.58
1	FID	ACIS-S-4	7.13	2960	0.416	0.104	0.011	0.018	0.000000	0.000000	2132.96	164.64
2	FID	ACIS-S-5	7.16	2960	-0.266	-0.033	0.024	0.035	0.000000	0.000000	-1833.13	158.64
3	GUIDE	108404032	9.38	5915	-0.011	-0.252	0.147	0.233	145.273174	14.125950	976.85	1428.76
4	GUIDE	109315024	6.82	5919	0.234	0.369	0.092	0.146	145.901735	13.442019	-627.42	-1455.78
5	GUIDE	109322136	8.97	5915	-0.437	-0.139	0.112	0.179	145.772314	14.118197	1521.44	-226.47
6	GUIDE	109322744	8.43	5918	0.042	0.291	0.099	0.153	145.923364	13.729244	373.90	-1185.29
7	GUIDE	108408152	7.19	5918	0.176	-0.271	0.092	0.154	144.821767	13.312572	-2306.14	1966.76

## 2.4 Star Slots

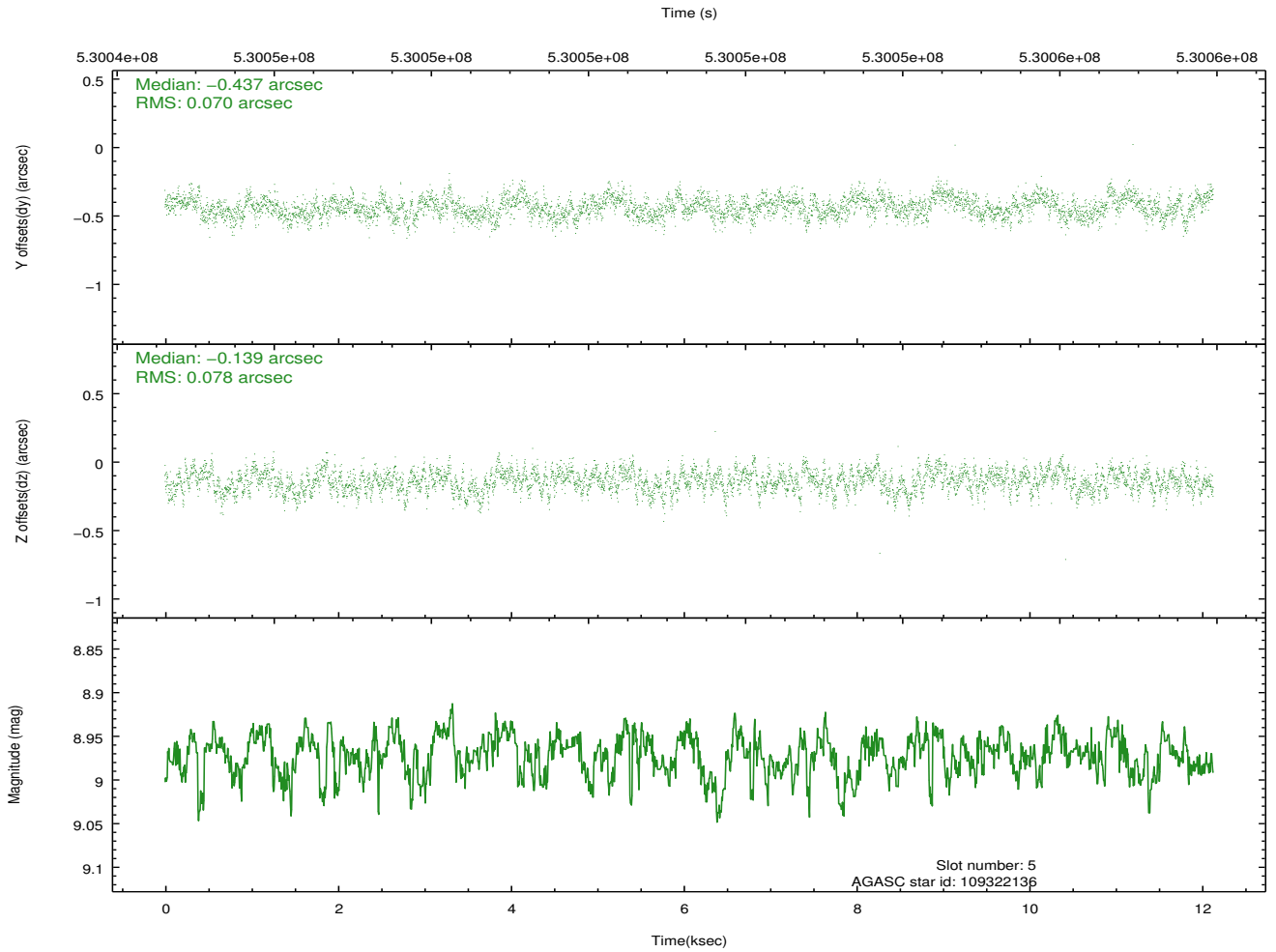
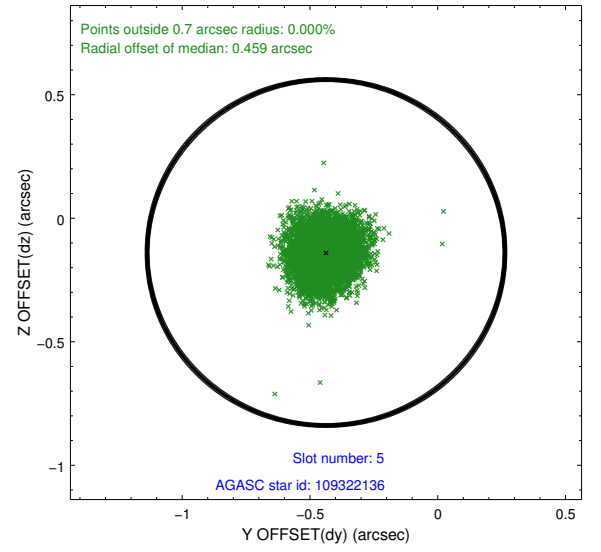
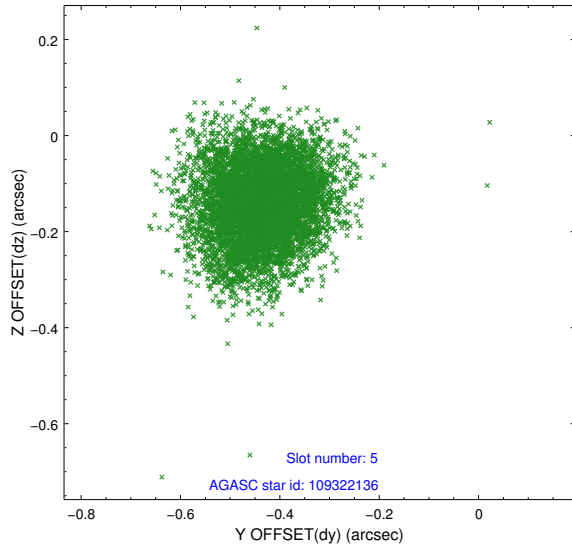
### 2.4.1 Slot 3



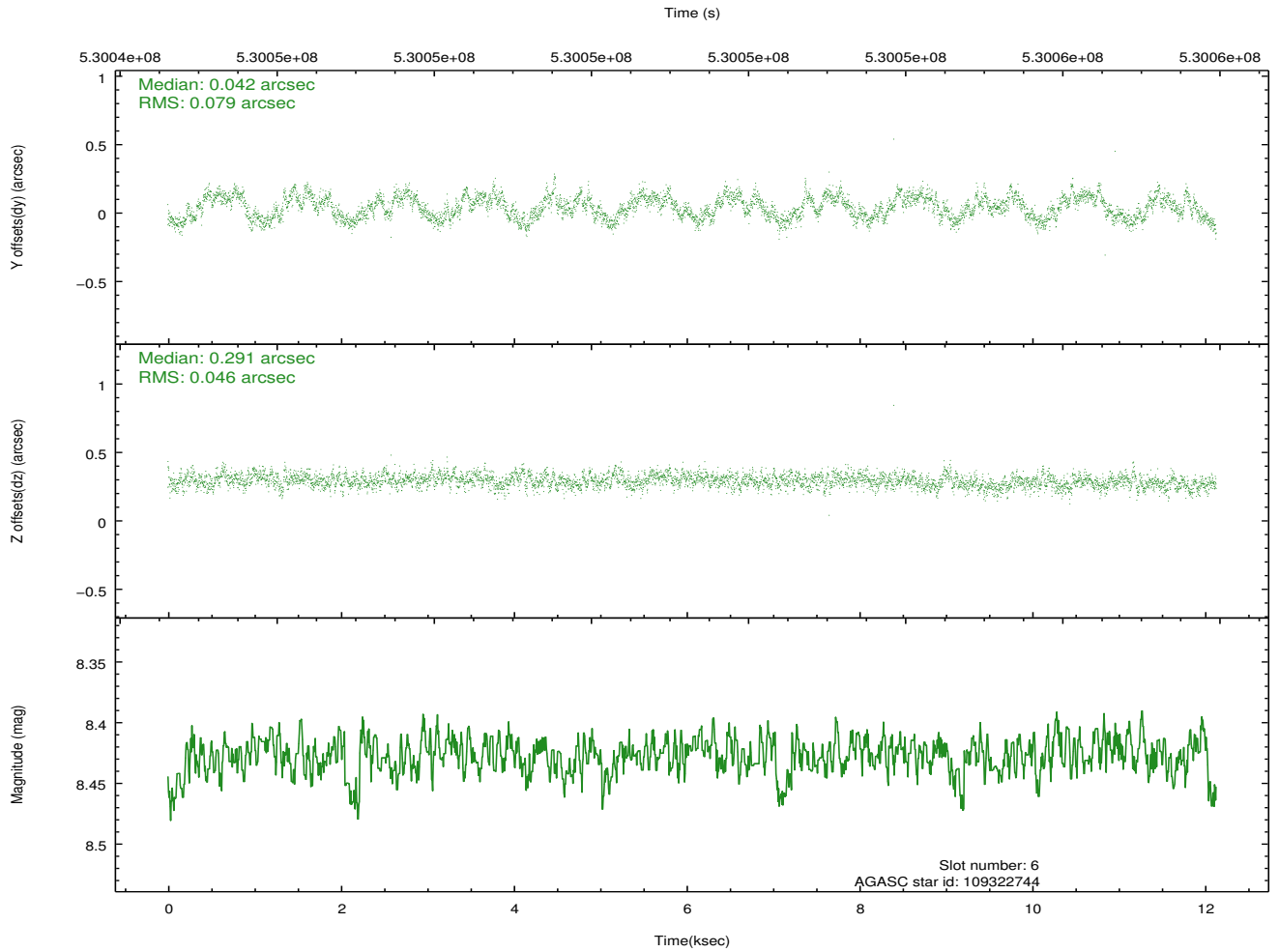
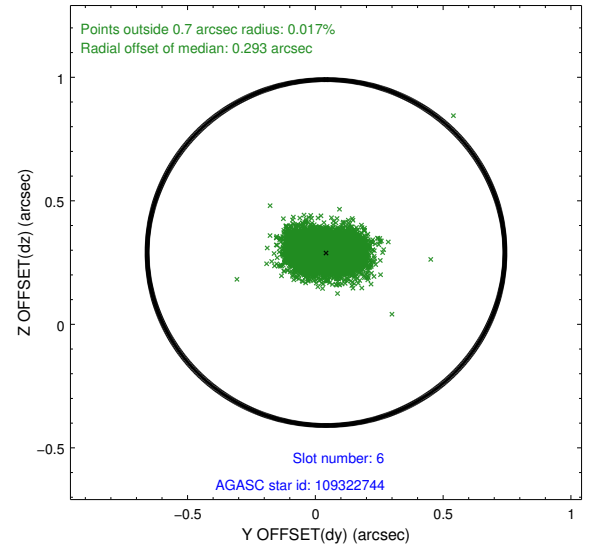
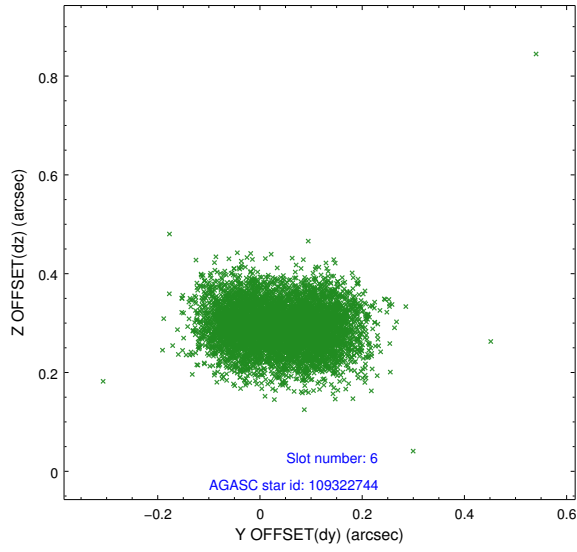
## 2.4.2 Slot 4



### 2.4.3 Slot 5

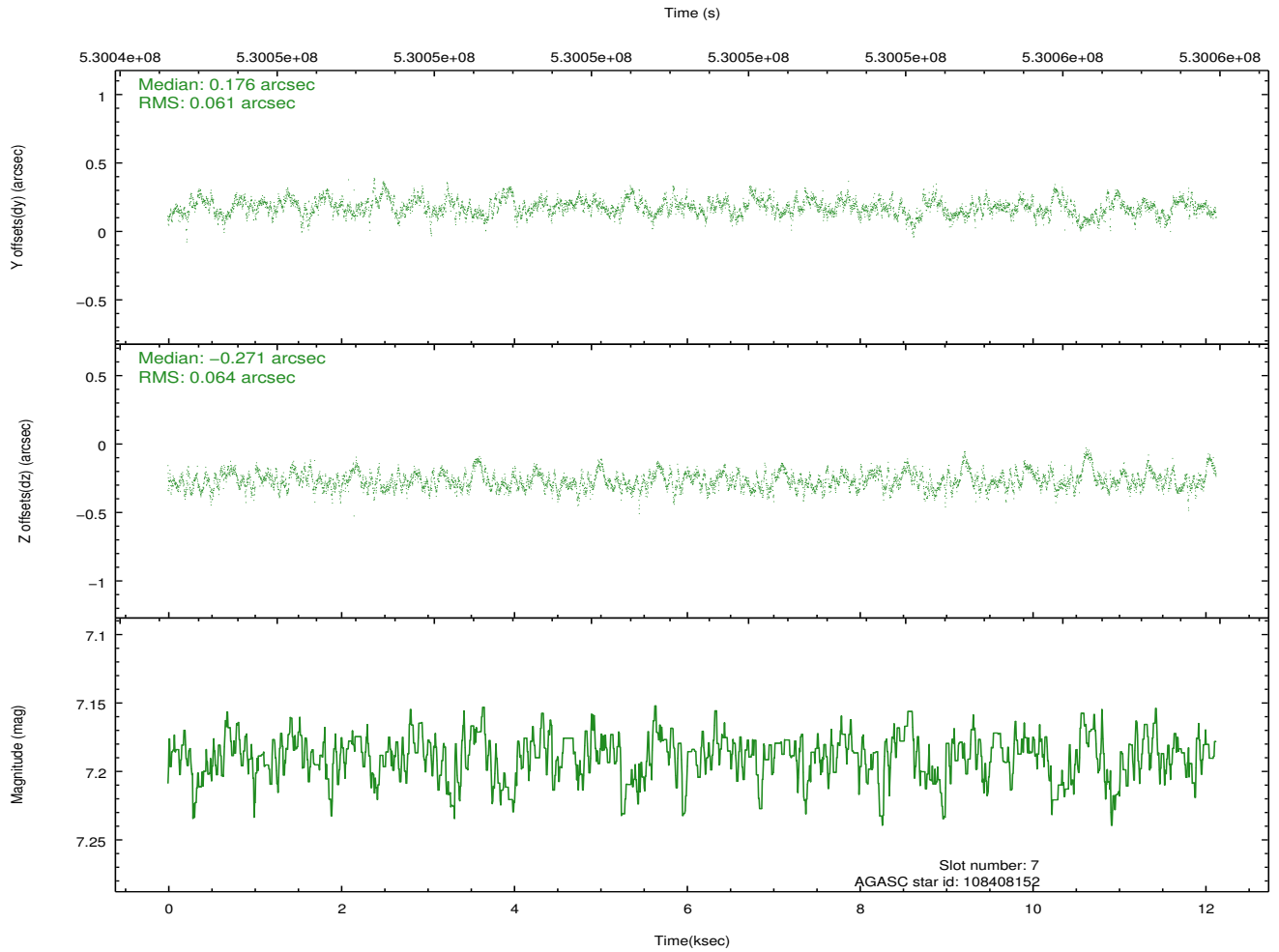
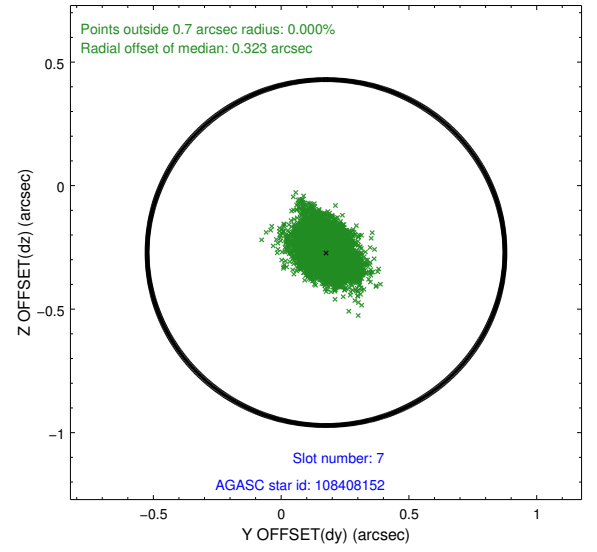
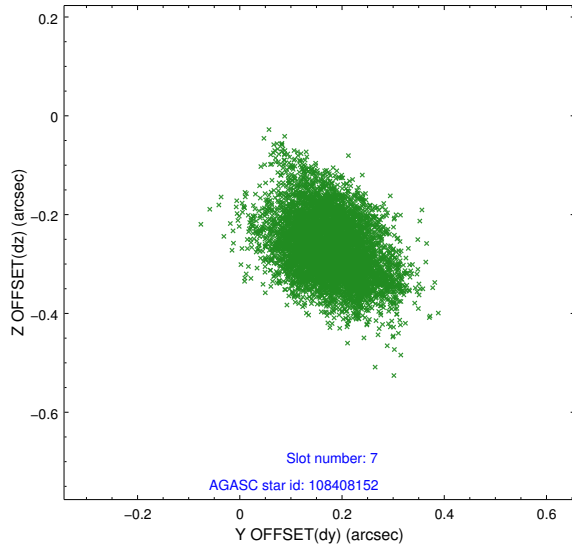


## 2.4.4 Slot 6



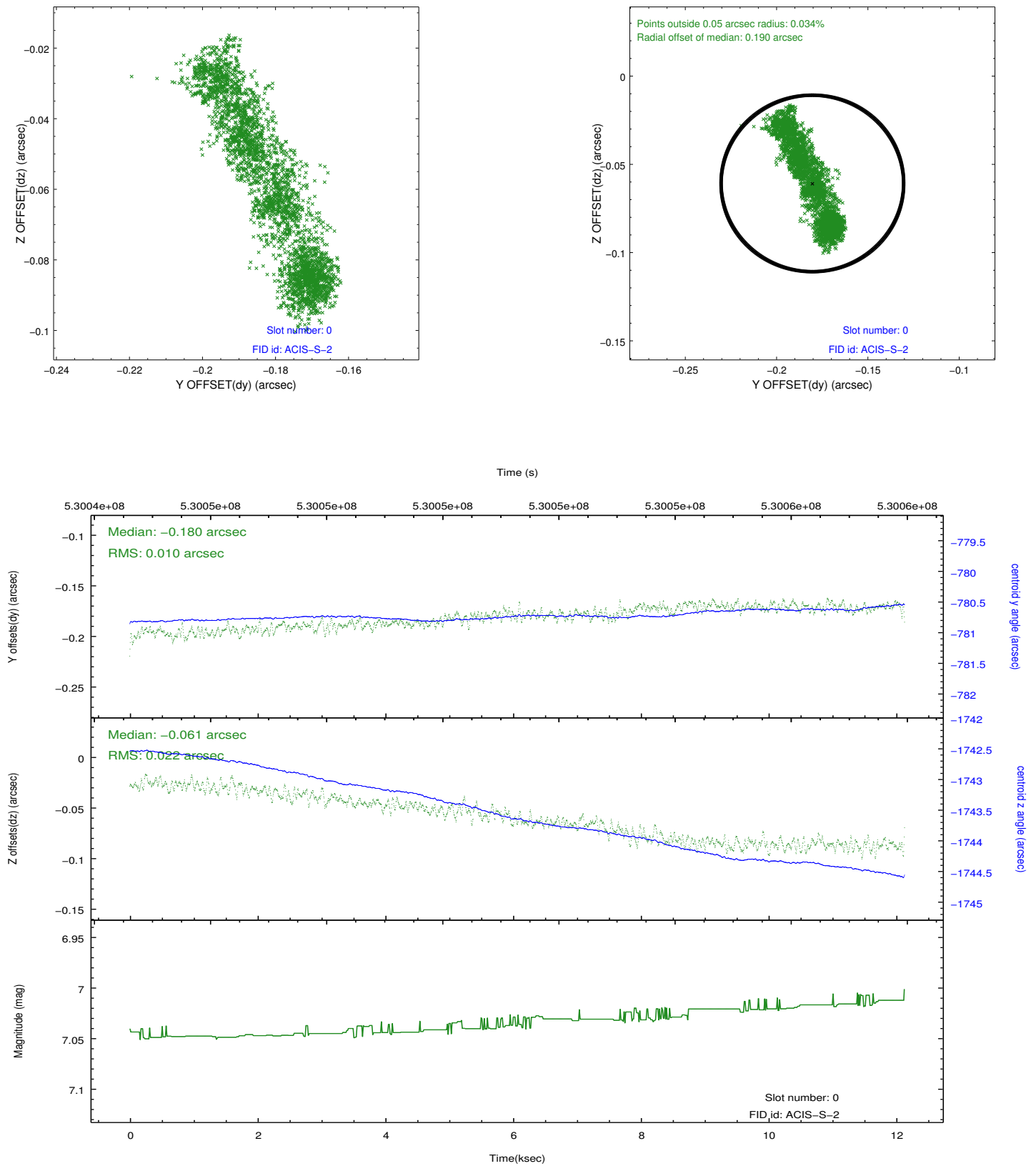


## 2.4.5 Slot 7

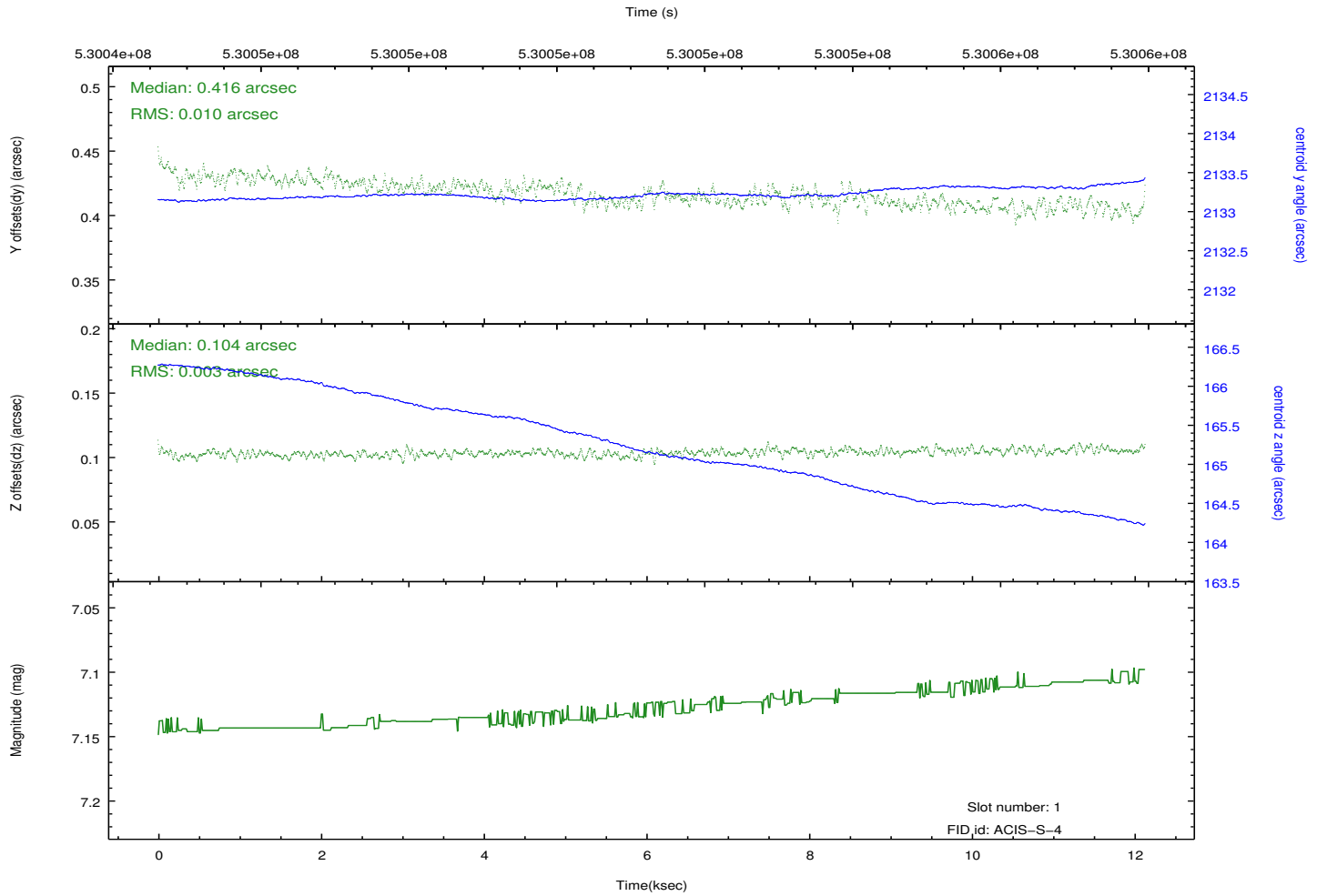
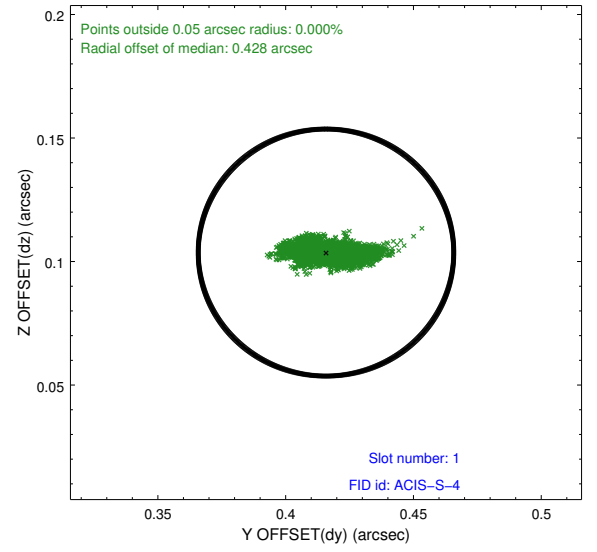
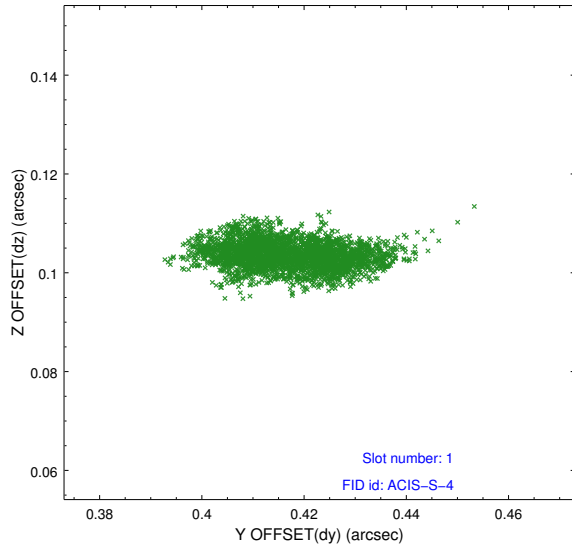


## 2.5 FID Slots

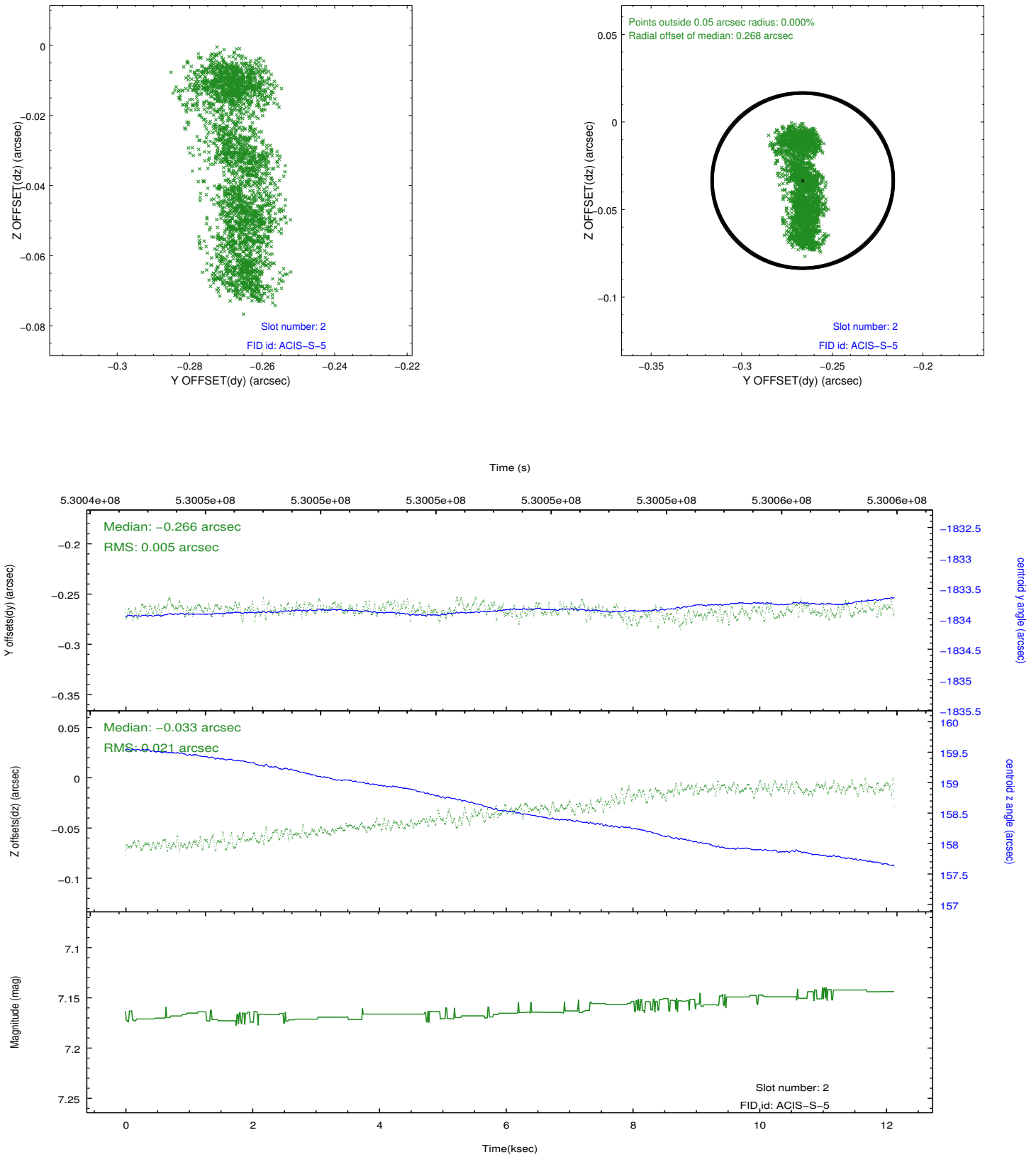
### 2.5.1 Slot 0



## 2.5.2 Slot 1



### 2.5.3 Slot 2



## A Summary

### A.1 Status

V&V Scientist	Joy Nichols
V&V Date (YYYY-MM-DD)	2014.10.21
V&V Edition	1
V&V Disposition and Status	OK
V&V Charge Time	12.074500092864

### A.2 Comments

The slot 1 radial offset of 0.428 arcsec is acceptable.