

# V&V Reference Report

## L2 ASCDS Version : 10.2.4

Observation 17418 - L2 Version 1  
Chandra X-Ray Center

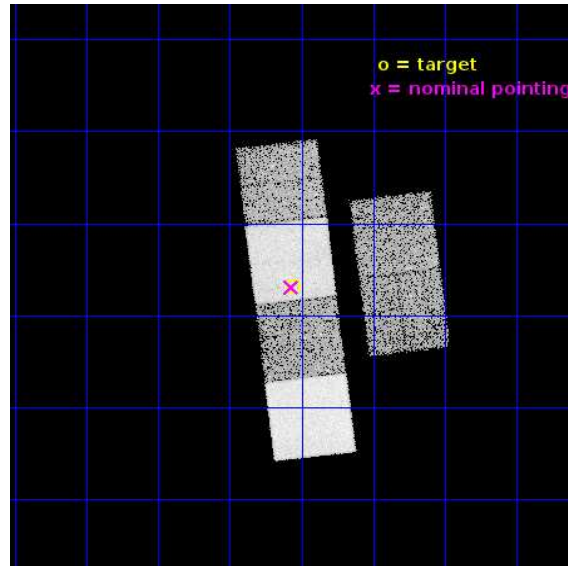
L2 Processing Date : Sep 25 2014

## Contents

<b>1</b>	<b>Front</b>	<b>2</b>
<b>2</b>	<b>OBI</b>	<b>3</b>
2.1	OBI . . . . .	3
2.1.1	Images . . . . .	3
2.1.2	Bias . . . . .	3
2.1.3	Parameters . . . . .	4
2.1.4	Events . . . . .	4
2.2	Compared Parameters . . . . .	5
2.3	Aspect . . . . .	6
2.4	Star Slots . . . . .	9
2.4.1	Slot 3 . . . . .	9
2.4.2	Slot 4 . . . . .	10
2.4.3	Slot 5 . . . . .	11
2.4.4	Slot 6 . . . . .	12
2.4.5	Slot 7 . . . . .	13
2.5	FID Slots . . . . .	14
2.5.1	Slot 0 . . . . .	14
2.5.2	Slot 1 . . . . .	15
2.5.3	Slot 2 . . . . .	16
<b>A</b>	<b>Summary</b>	<b>17</b>
A.1	Status . . . . .	17
A.2	Comments . . . . .	17

# 1 Front

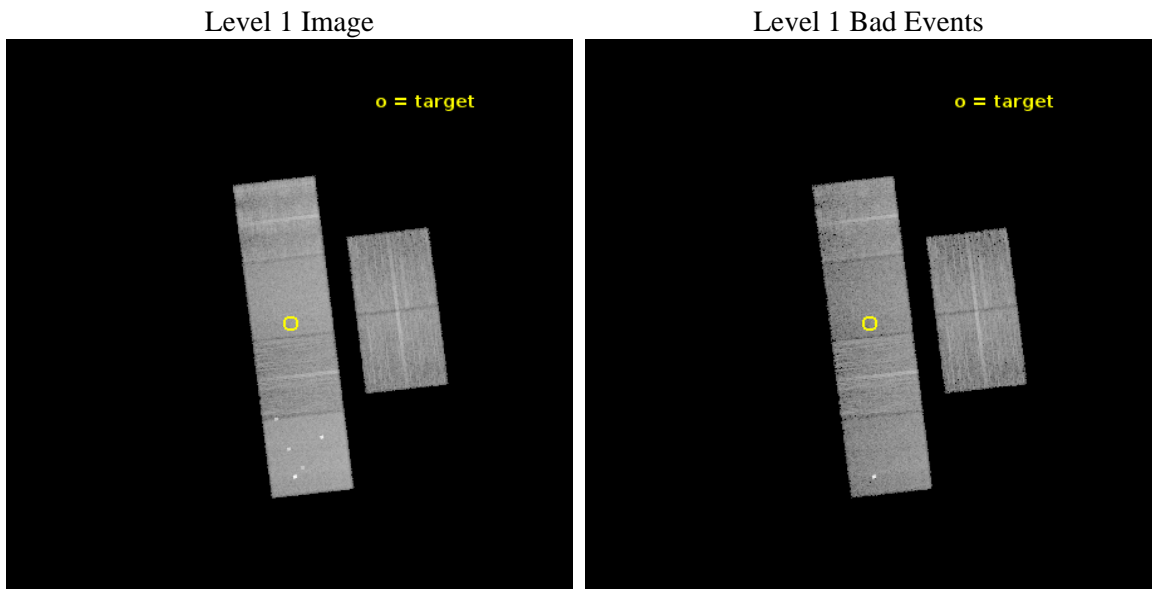
seq_num	601108	Sequence number
obs_id	17418	Observation id
title	X-Rays from Lyman Break Analog	Proposal title
observer	Prof. Philip Kaaret	Principal investigator
object	SDSS J230703.75+011311.2	Source name
dtcycle	0	&#160
cycle	P	events from which exps? Prim/Second/Both
ra_targ	346.765417	Observer's specified target RA [deg]
dec_targ	1.219778	Observer's specified target Dec [deg]
ra_nom	346.76779096008	Nominal RA [deg]
dec_nom	1.2177527696193	Nominal Dec [deg]
roll_nom	263.15658826315	Nominal Roll [deg]
revision	1	Processing version of data
ontime	13793.919112802	Sum of GTIs [s]
livetime	13619.252203294	Livetime [s]
ontime2	13793.960152805	Sum of GTIs [s]
ontime3	13793.795992792	Sum of GTIs [s]
ontime5	13793.878072798	Sum of GTIs [s]
ontime6	13793.837032795	Sum of GTIs [s]
ontime7	13793.919112802	Sum of GTIs [s]
ontime8	13793.754952788	Sum of GTIs [s]
l2events	131658	Number of level 2 events



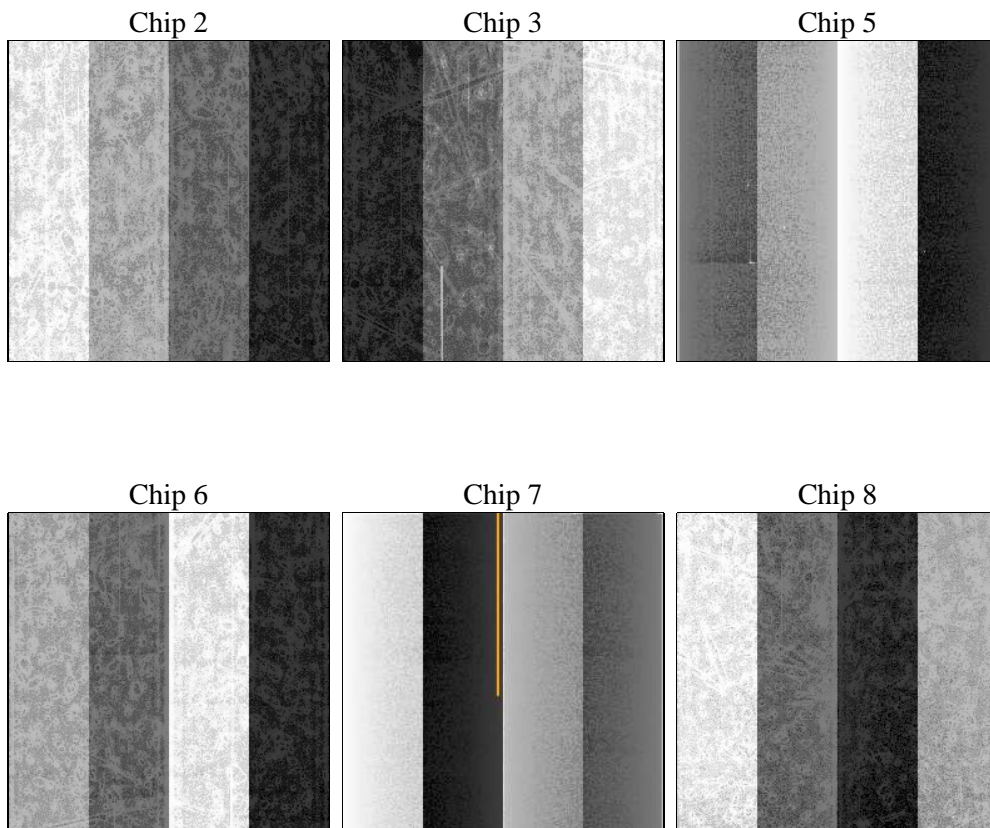
## 2 OBI

### 2.1 OBI

#### 2.1.1 Images



#### 2.1.2 Bias



### 2.1.3 Parameters

obi_num	0	Obi number	sched_exp_time	13831.261000	[s] Scheduled observation exposure time
ascdsver	10.2.4	Processing system revision	ontime	13793.919112802	Sum of GTIs [s]
caldsver	4.6.3	&#160	ontime2	13793.960152805	Sum of GTIs [s]
date	2014-09-25T20:18:33	Date and time of file creation	ontime3	13793.795992792	Sum of GTIs [s]
revision	1	Processing version of data	ontime5	13793.878072798	Sum of GTIs [s]
			ontime6	13793.837032795	Sum of GTIs [s]
			ontime7	13793.919112802	Sum of GTIs [s]
			ontime8	13793.754952788	Sum of GTIs [s]
			l1events	560512	Number of level 1 events

### 2.1.4 Events

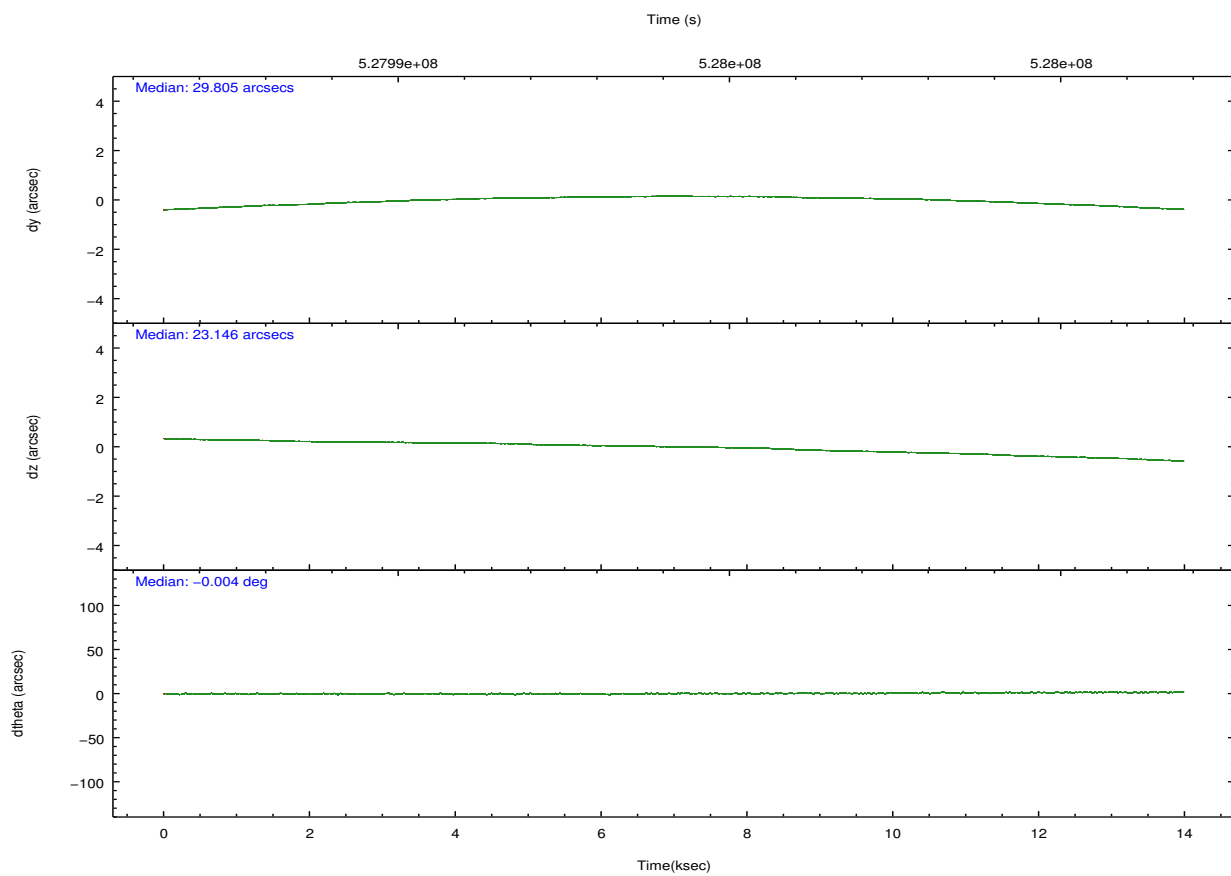
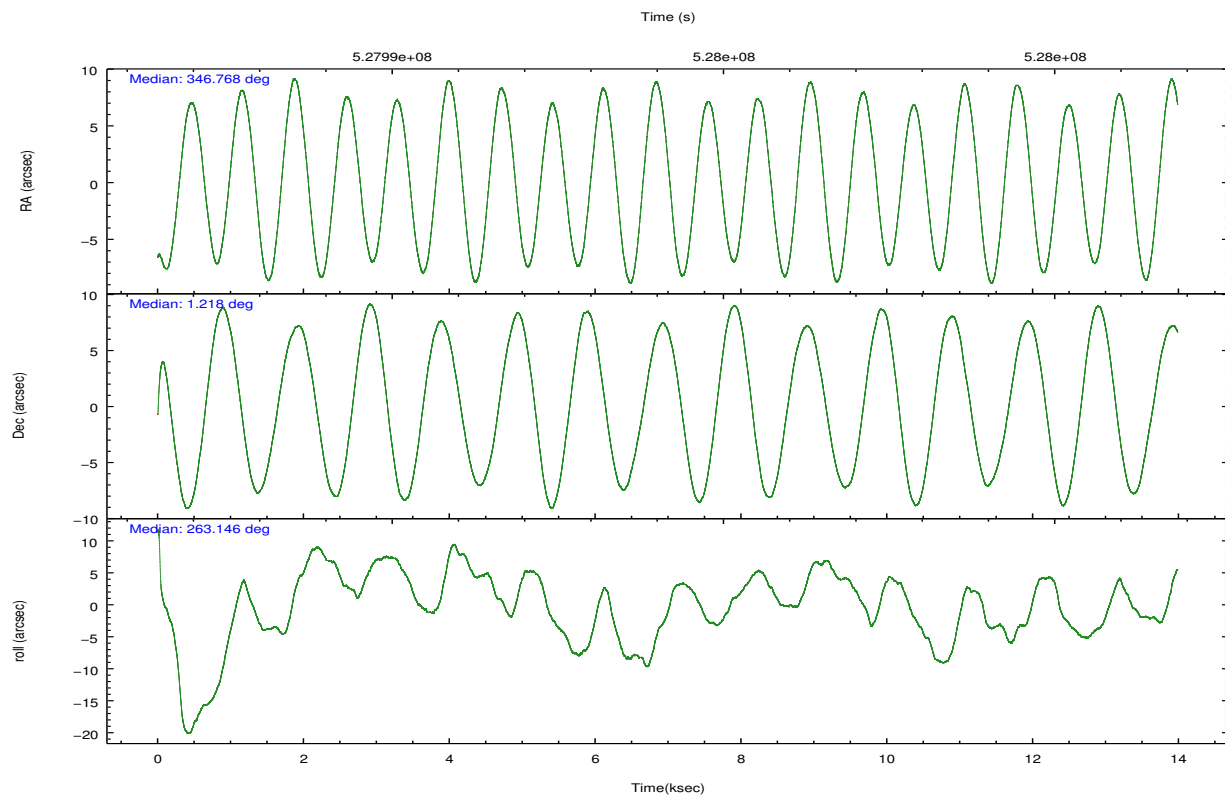
	ccd 2	ccd 3	ccd 5	ccd 6	ccd 7	ccd 8		ccd 2	ccd 3	ccd 5	ccd 6	ccd 7	ccd 8
level 1 events	77145	74274	129818	78317	101542	99416	grade 0 events	2983	3013	8343	3182	3936	8211
rejected events	68500	65789	66059	69201	57196	71689		3%	4%	6%	4%	3%	8%
rejected %	88%	88%	50%	88%	56%	72%	grade 1 events	46	41	254	30	132	82
								0%	0%	0%	0%	0%	0%
							grade 2 events	2140	1896	19362	2035	9249	6344
								2%	2%	14%	2%	9%	6%
							grade 3 events	869	917	1985	923	3584	3092
								1%	1%	1%	1%	3%	3%
							grade 4 events	895	864	1951	909	3647	2899
								1%	1%	1%	1%	3%	2%
							grade 5 events	3317	3823	9038	3851	10316	5473
								4%	5%	6%	4%	10%	5%
							grade 6 events	1771	1798	32148	2075	23950	7202
								2%	2%	24%	2%	23%	7%
							grade 7 events	65124	61922	56737	65312	46728	66113
								84%	83%	43%	83%	46%	66%



## 2.2 Compared Parameters

Parameter	Planned	Actual	Parameter	Planned	Actual
Instrument	ACIS	ACIS	Obspar format version number	7	7
Detector	ACIS-235678	ACIS-235678	Obspar file type	PREDICTED	ACTUAL
Grating	NONE	NONE	Obspar update status	NONE	UPDATED
Data mode	VFAINT	VFAINT	CCD I0 on	N	N
Observation mode	POINTING	POINTING	CCD I1 on	N	N
[deg] Pointing RA	346.756657	346.7677909600849	CCD I2 on	O2	Y
[deg] Pointing Dec	1.242847	1.217752769619279	CCD I3 on	O3	Y
[deg] Pointing Roll	263.000187	263.1565882631476	CCD S0 on	N	N
[mm] SIM focus pos	-0.684267	-0.6828225247311905	CCD S1 on	O1	Y
[mm] SIM defocus	0	0.001444936568705701	CCD S2 on	O5	Y
[mm] SIM translation stage pos	-190.132523	-190.1425803651734	CCD S3 on	Y	Y
[mm] SIM translation stage offset	0	0.01005778216563158	CCD S4 on	O4	Y
[s] Observation start time (MET)	527987326.184000	527986314.13052	CCD S5 on	N	N
Observation start date	2014-09-24T23:07:39	2014-09-24T22:51:54	Number of optional ACIS chips dropped	0	0
[s] Observation end time (MET)	528001157.184000	528001383.16886	On-chip summing requested	N	N
Observation end date	2014-09-25T02:58:10	2014-09-25T03:03:03	Subarray requested	NONE	NONE
Read mode	TIMED	TIMED	Alternating exposures requested	N	N
			[s] Primary exposure time	0.000000	3.2

## 2.3 Aspect

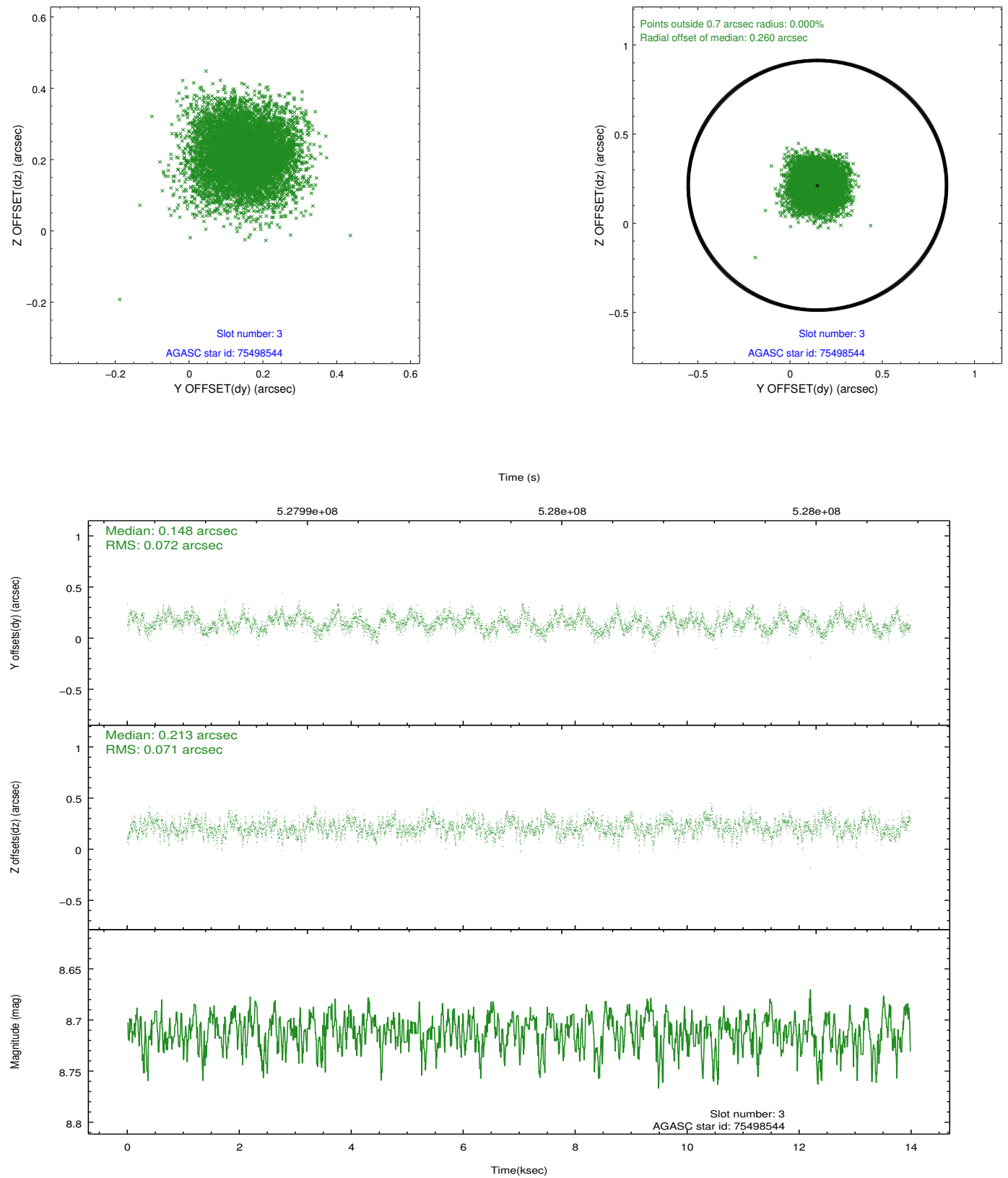


### Slot Statistics

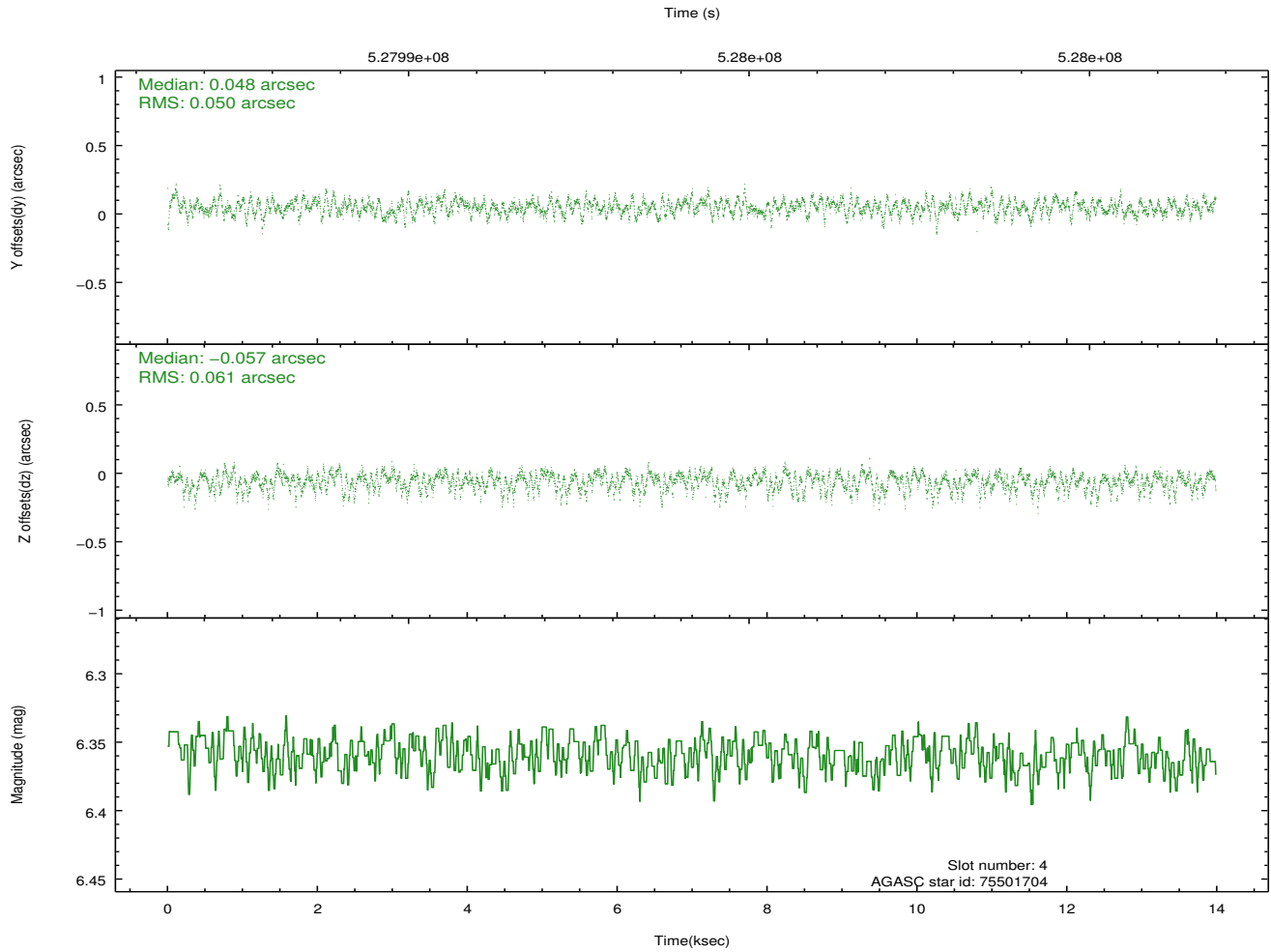
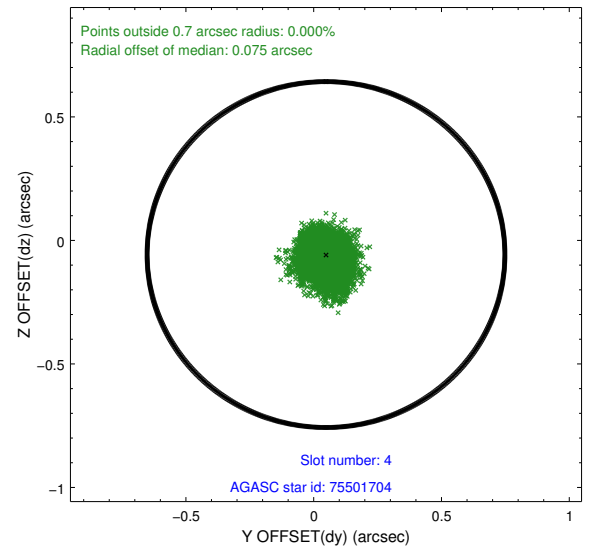
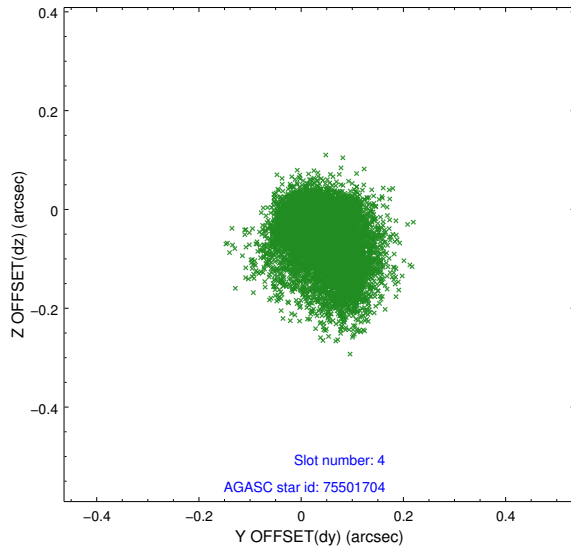
slot	status	id	mag	n_pts	med_dy	med_dz	dr1	dr2	ra	dec	mean_y	mean_z
0	FID	ACIS-S-2	6.95	3412	-0.229	-0.074	0.007	0.012	0.000000	0.000000	-783.37	-1744.71
1	FID	ACIS-S-4	7.05	3412	0.442	0.130	0.006	0.012	0.000000	0.000000	2130.43	163.60
2	FID	ACIS-S-5	7.08	3411	-0.245	-0.047	0.007	0.012	0.000000	0.000000	-1835.79	157.51
3	GUIDE	75498544	8.71	6820	0.148	0.213	0.109	0.172	346.364785	1.762635	-1683.71	-1626.81
4	GUIDE	75501704	6.36	6822	0.048	-0.057	0.084	0.137	346.323471	1.307128	-39.24	-1575.12
5	GUIDE	75503312	9.13	6819	-0.045	-0.018	0.111	0.184	346.367663	1.124277	595.61	-1336.61
6	GUIDE	75505240	9.59	6641	-0.338	-0.350	0.132	0.214	347.227385	0.564421	2217.96	1979.85
7	GUIDE	75501144	7.98	6822	0.178	0.210	0.104	0.164	346.130460	1.595518	-982.42	-2392.08

## 2.4 Star Slots

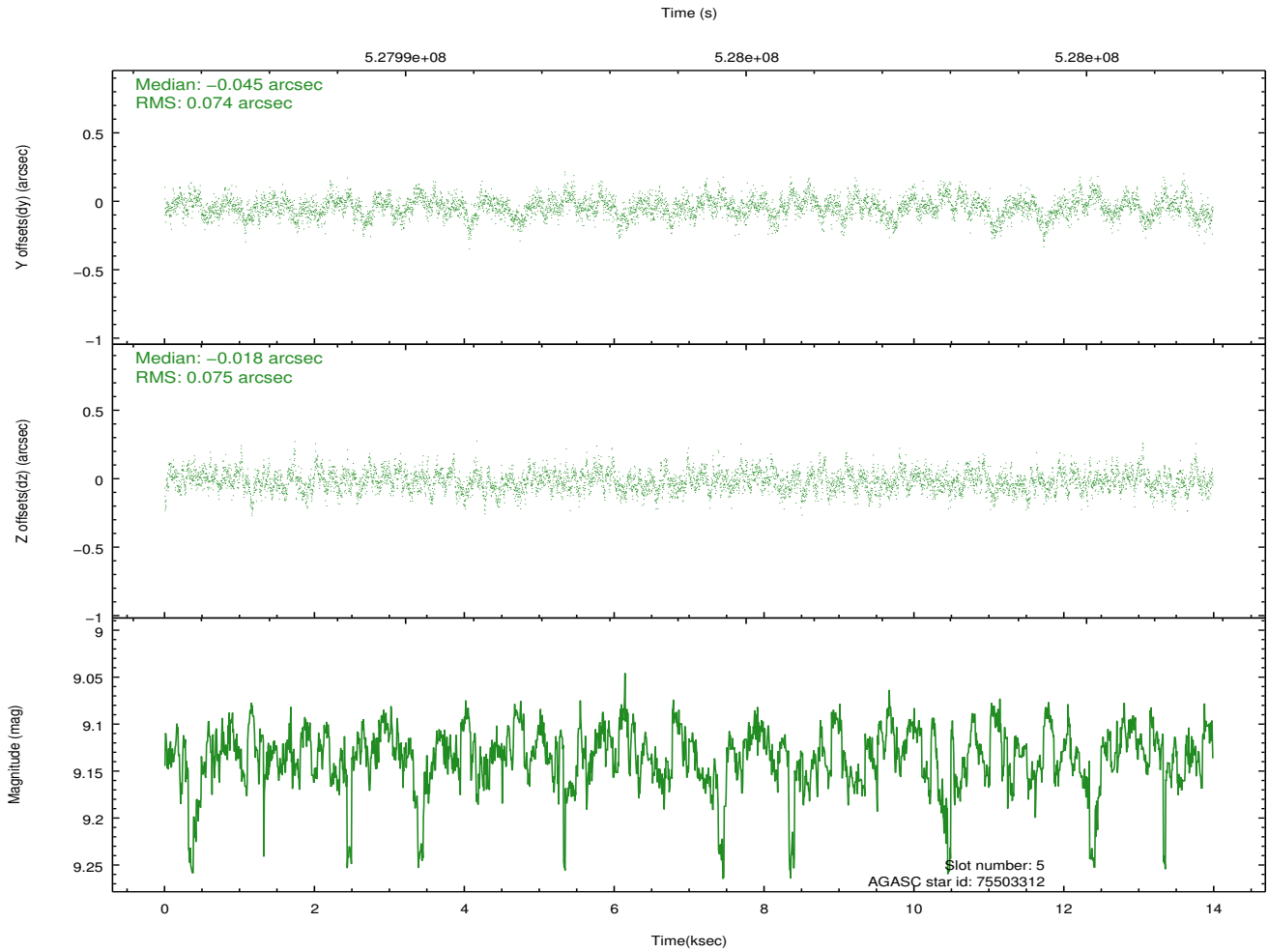
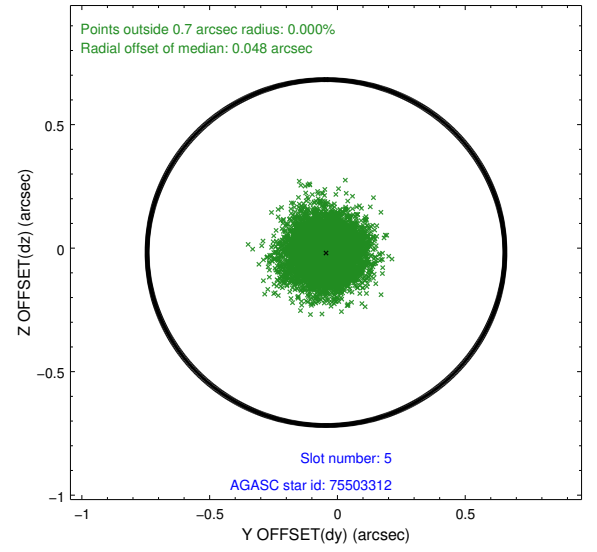
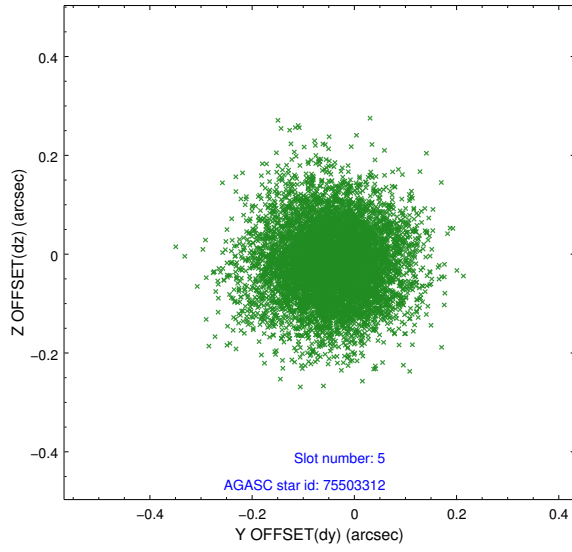
### 2.4.1 Slot 3



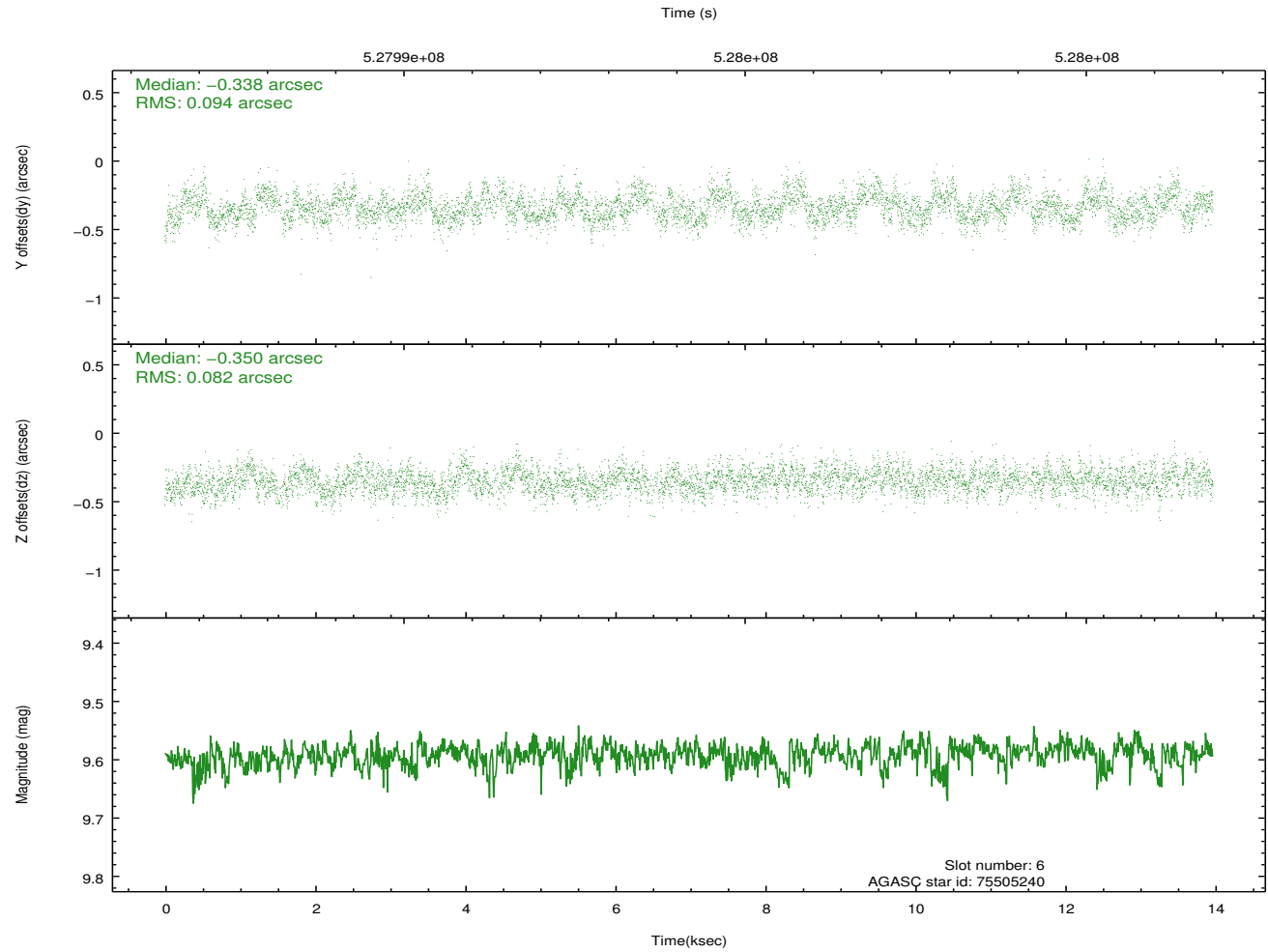
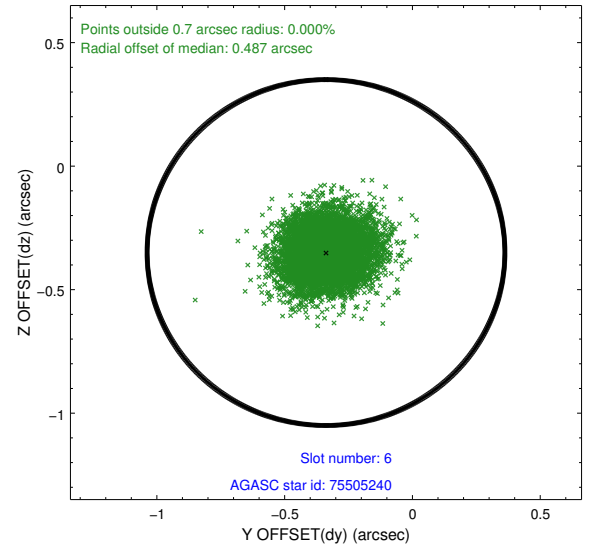
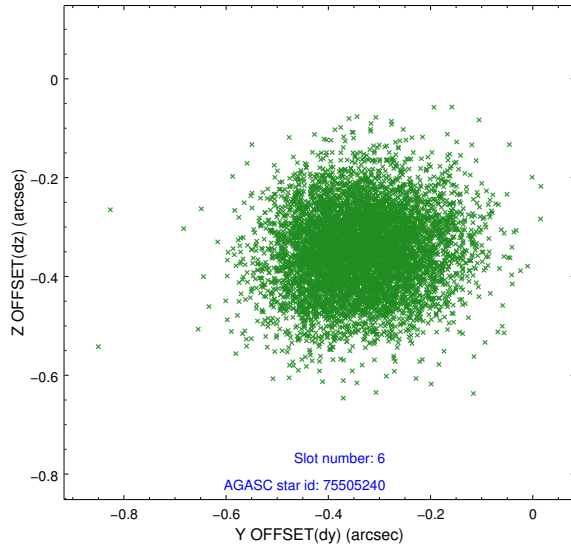
## 2.4.2 Slot 4



### 2.4.3 Slot 5

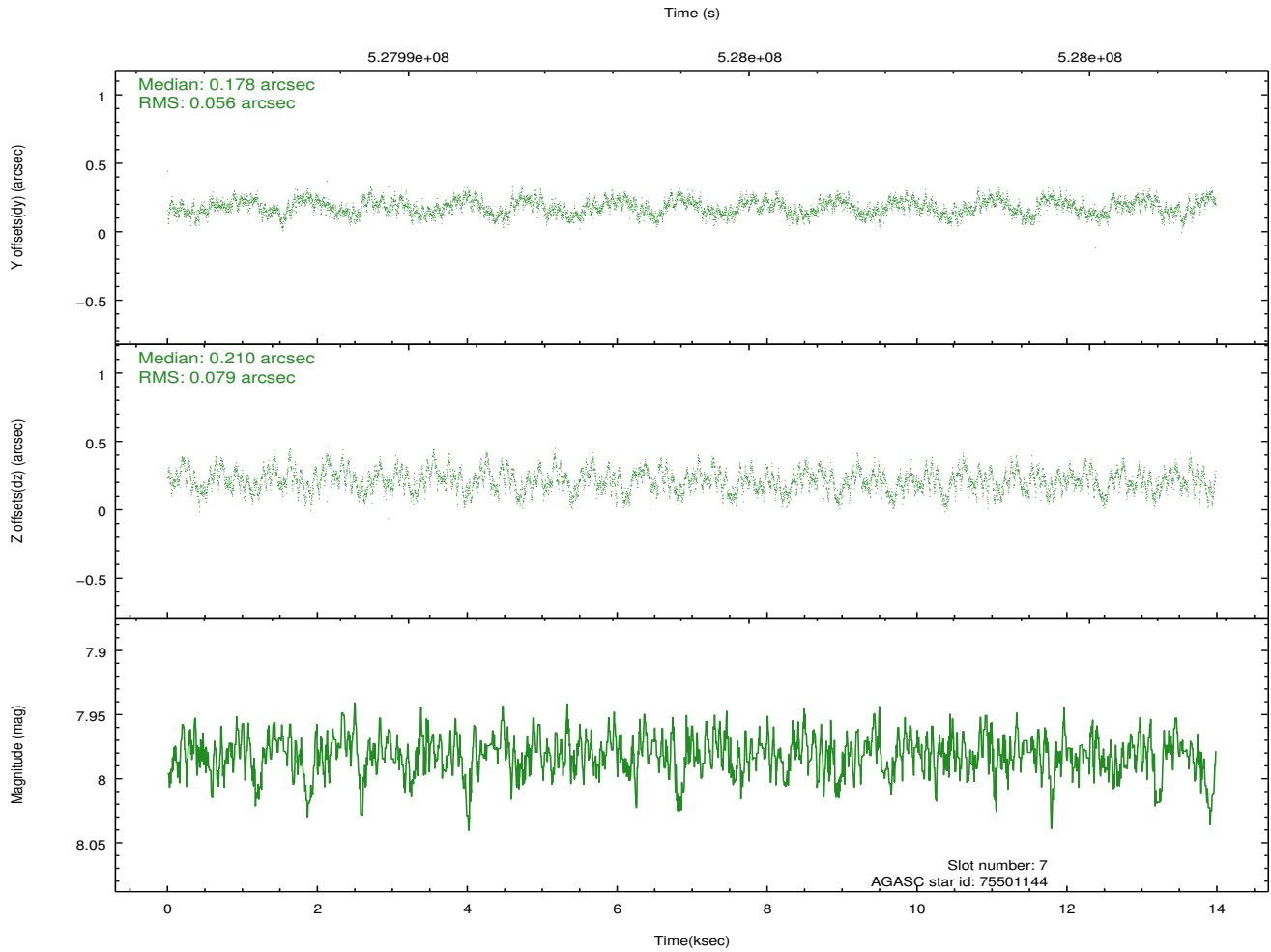
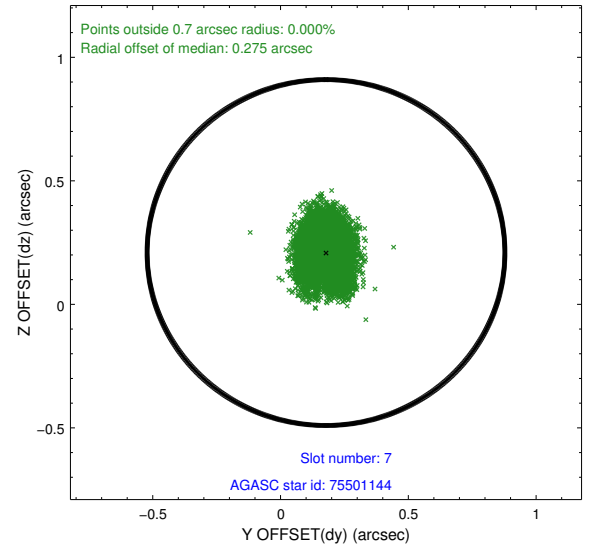
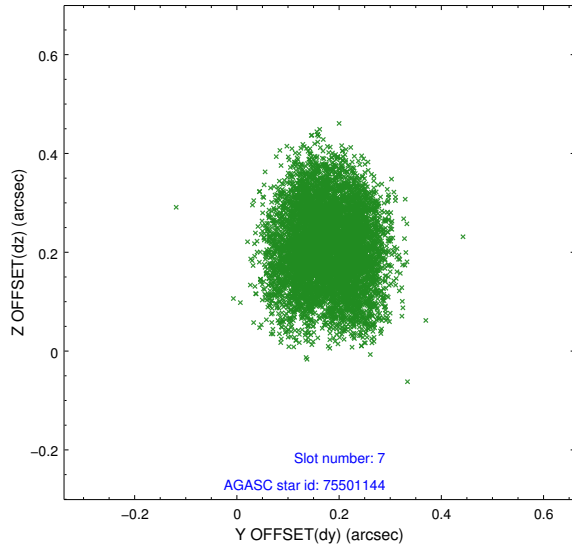


## 2.4.4 Slot 6



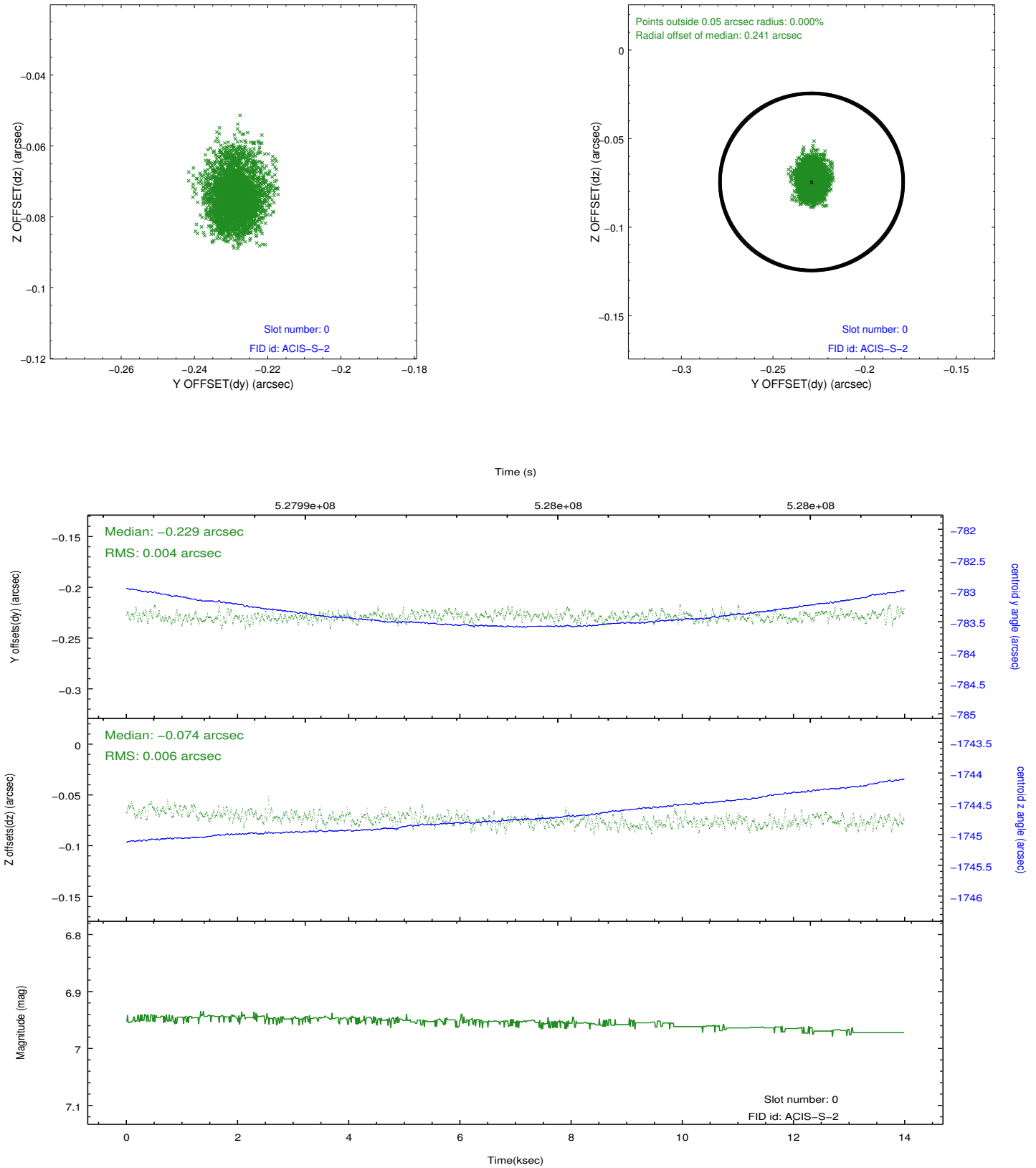


## 2.4.5 Slot 7

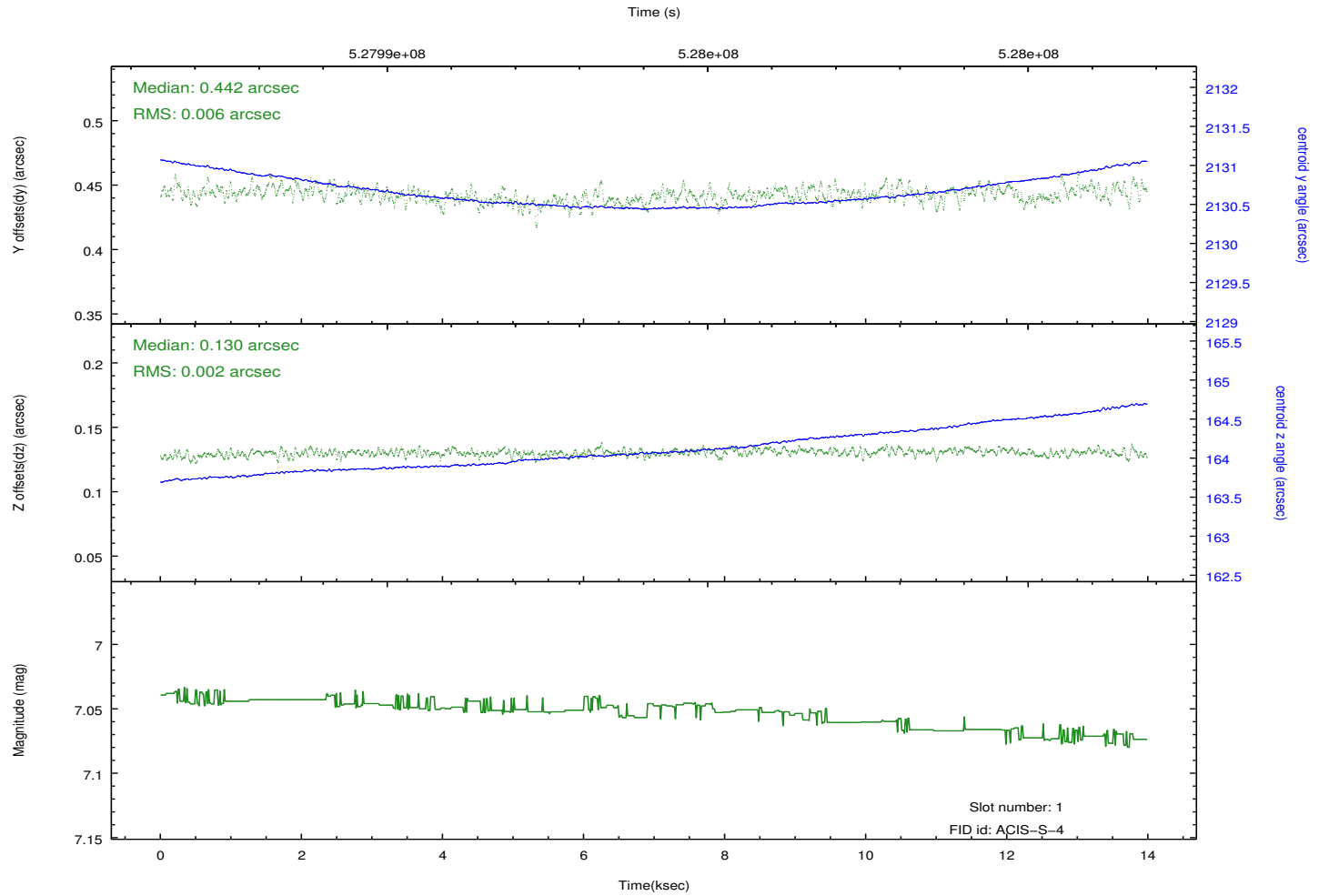
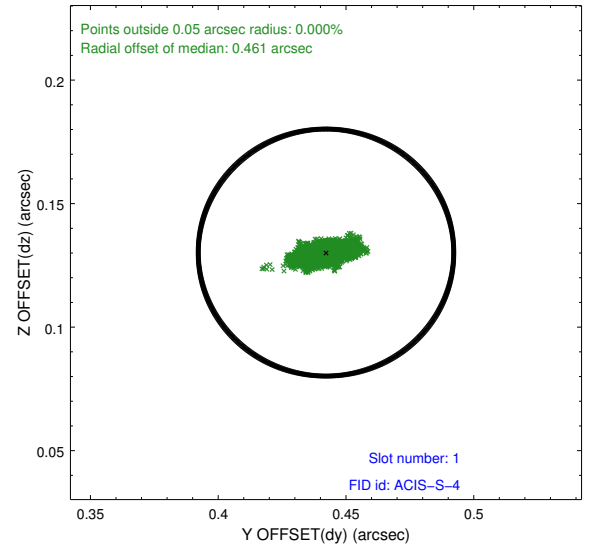
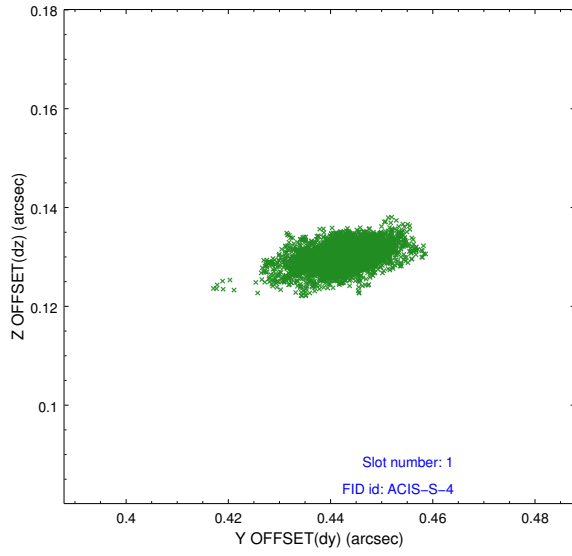


## 2.5 FID Slots

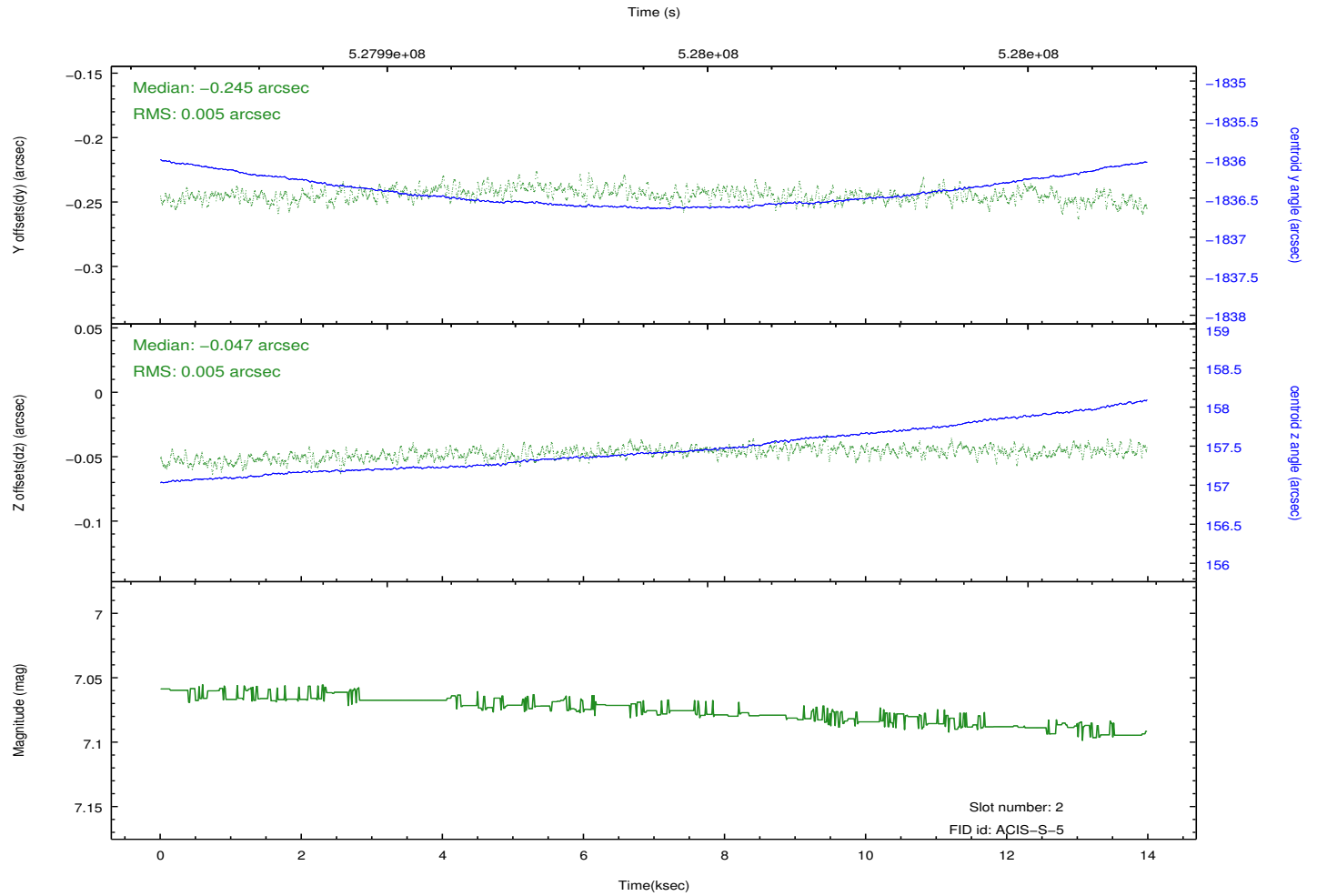
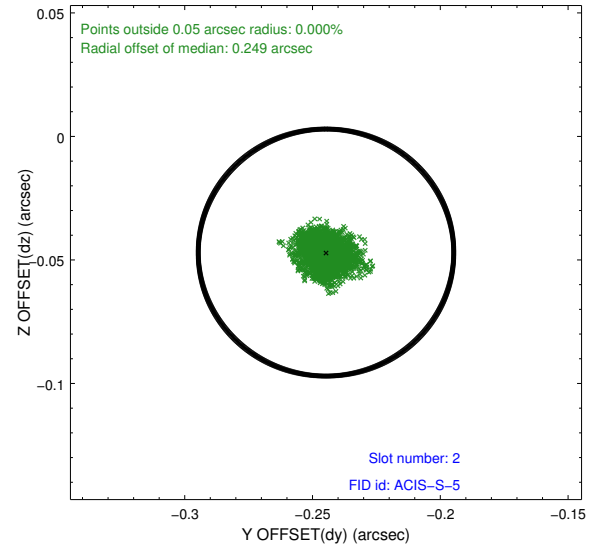
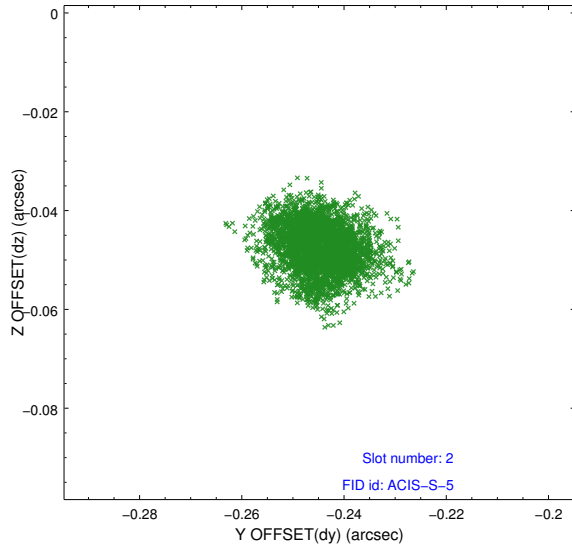
### 2.5.1 Slot 0



## 2.5.2 Slot 1



### 2.5.3 Slot 2



## A Summary

### A.1 Status

V&V Scientist	Beth Sundheim
V&V Date (YYYY-MM-DD)	2014.09.26
V&V Edition	1
V&V Disposition and Status	OK
V&V Charge Time	13.793919112802

### A.2 Comments