

V&V Reference Report

L2 ASCDS Version : 10.2.4

Observation 16020 - L2 Version 1
Chandra X-Ray Center

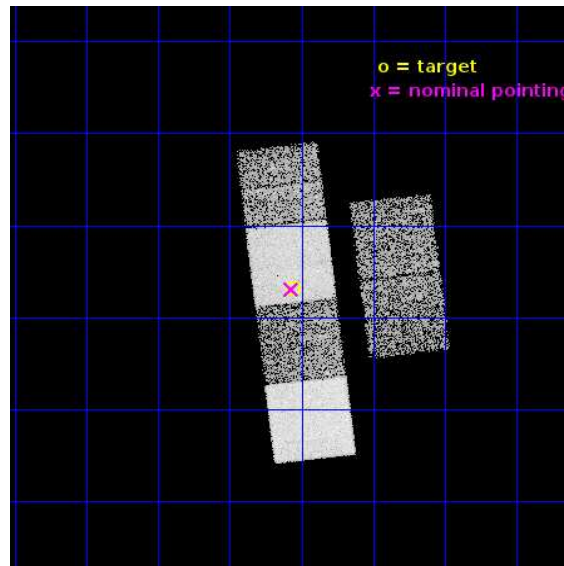
L2 Processing Date : Sep 22 2014

Contents

1	Front	2
2	OBI	3
2.1	OBI	3
2.1.1	Images	3
2.1.2	Bias	3
2.1.3	Parameters	4
2.1.4	Events	4
2.2	Compared Parameters	5
2.3	Aspect	6
2.4	Star Slots	9
2.4.1	Slot 3	9
2.4.2	Slot 4	10
2.4.3	Slot 5	11
2.4.4	Slot 6	12
2.4.5	Slot 7	13
2.5	FID Slots	14
2.5.1	Slot 0	14
2.5.2	Slot 1	15
2.5.3	Slot 2	16
A	Summary	17
A.1	Status	17
A.2	Comments	17

1 Front

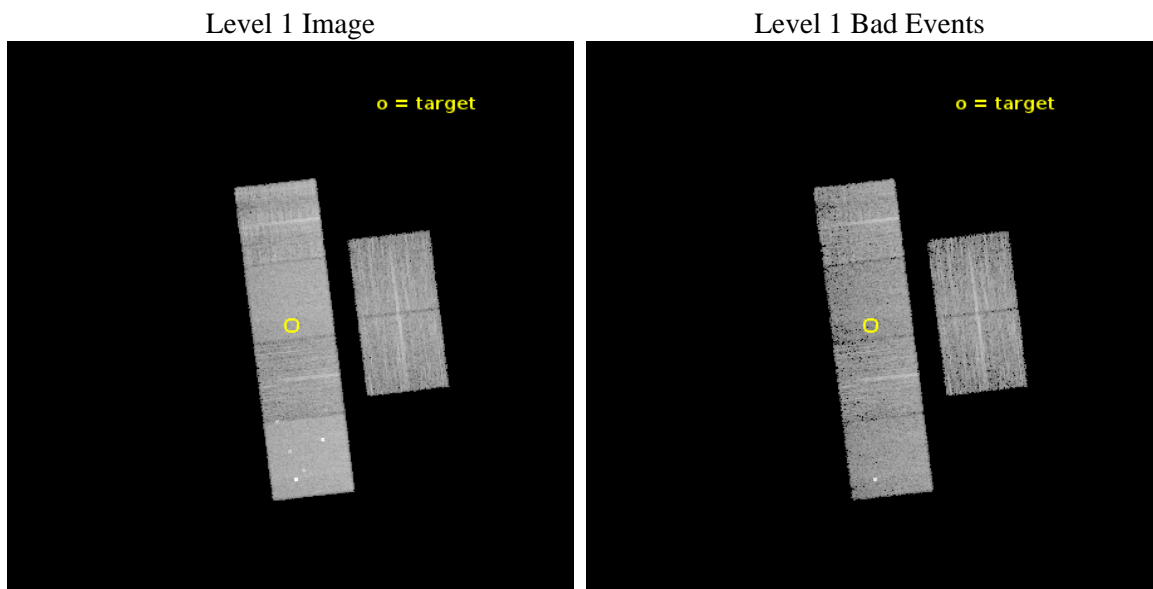
seq_num	601108	Sequence number
obs_id	16020	Observation id
title	X-Rays from Lyman Break Analog	Proposal title
observer	Prof. Philip Kaaret	Principal investigator
object	SDSS J230703.75+011311.2	Source name
dtcycle	0	
cycle	P	events from which exps? Prim/Second/Both
ra_targ	346.765417	Observer's specified target RA [deg]
dec_targ	1.219778	Observer's specified target Dec [deg]
ra_nom	346.76777530645	Nominal RA [deg]
dec_nom	1.2177280212856	Nominal Dec [deg]
roll_nom	263.15657411636	Nominal Roll [deg]
revision	1	Processing version of data
ontime	9231.064745307	Sum of GTIs [s]
livetime	9114.175445222	Livetime [s]
ontime2	9231.1057853103	Sum of GTIs [s]
ontime3	9230.9416252971	Sum of GTIs [s]
ontime5	9231.0237053037	Sum of GTIs [s]
ontime6	9230.9826653004	Sum of GTIs [s]
ontime7	9231.064745307	Sum of GTIs [s]
ontime8	9230.9005852938	Sum of GTIs [s]
l2events	87219	Number of level 2 events



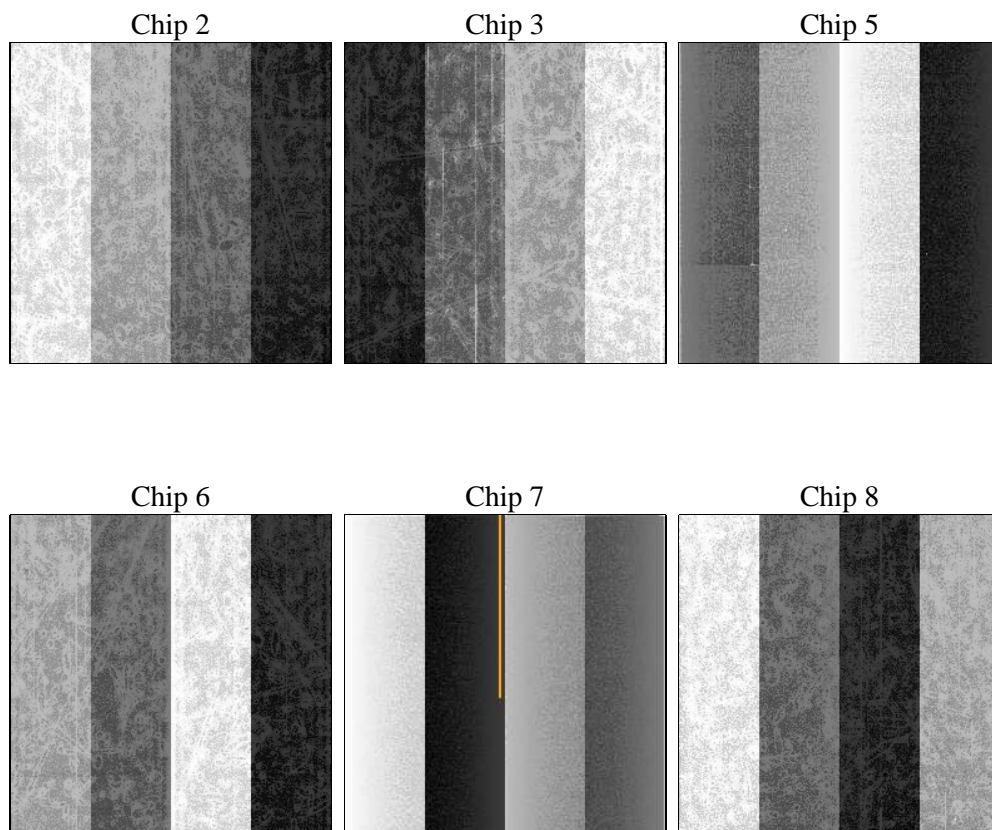
2 OBI

2.1 OBI

2.1.1 Images



2.1.2 Bias



2.1.3 Parameters

obi_num	0	Obi number	sched_exp_time	9270.544000	[s] Scheduled observation exposure time
ascdsver	10.2.4	Processing system revision	ontime	9231.064745307	Sum of GTIs [s]
caldsver	4.6.3	 	ontime2	9231.1057853103	Sum of GTIs [s]
date	2014-09-23T03:37:08	Date and time of file creation	ontime3	9230.9416252971	Sum of GTIs [s]
revision	1	Processing version of data	ontime5	9231.0237053037	Sum of GTIs [s]
			ontime6	9230.9826653004	Sum of GTIs [s]
			ontime7	9231.064745307	Sum of GTIs [s]
			ontime8	9230.9005852938	Sum of GTIs [s]
			l1events	369224	Number of level 1 events

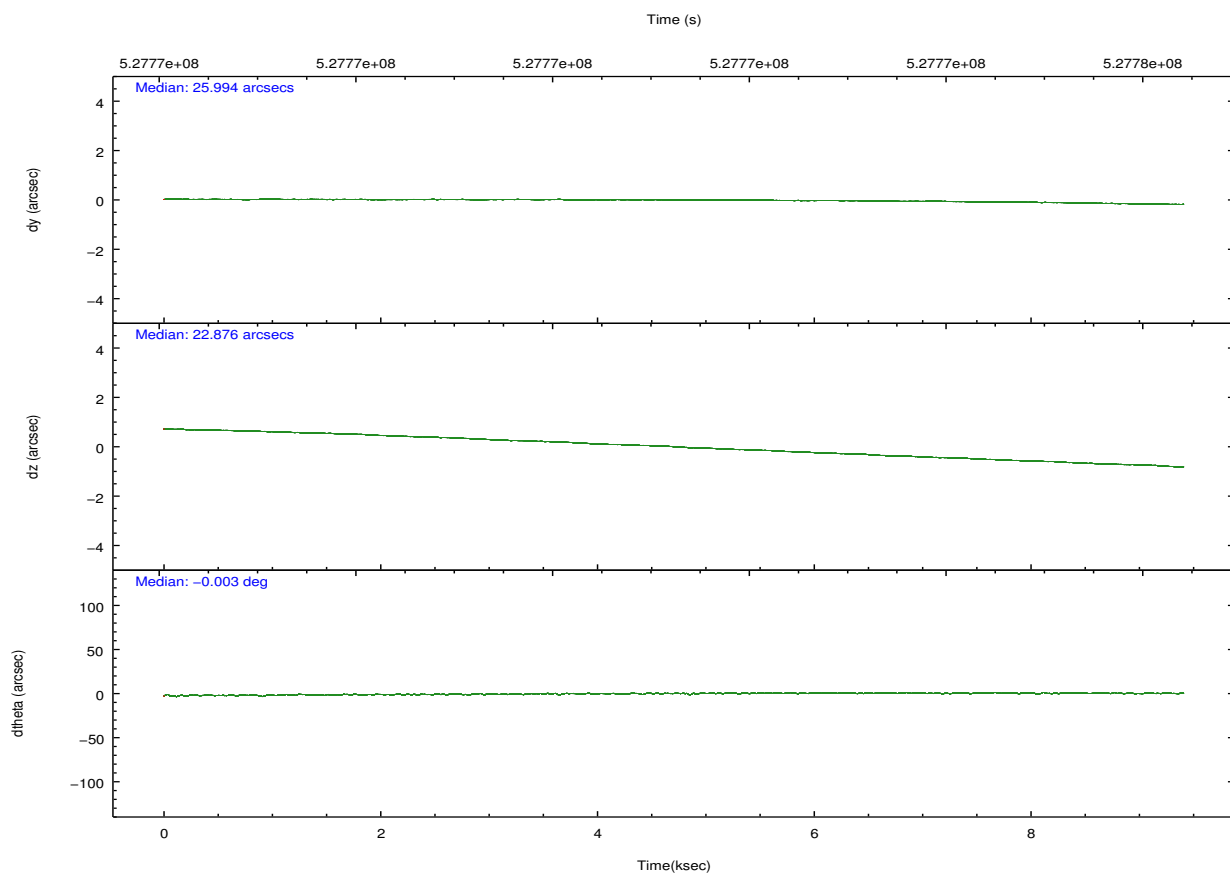
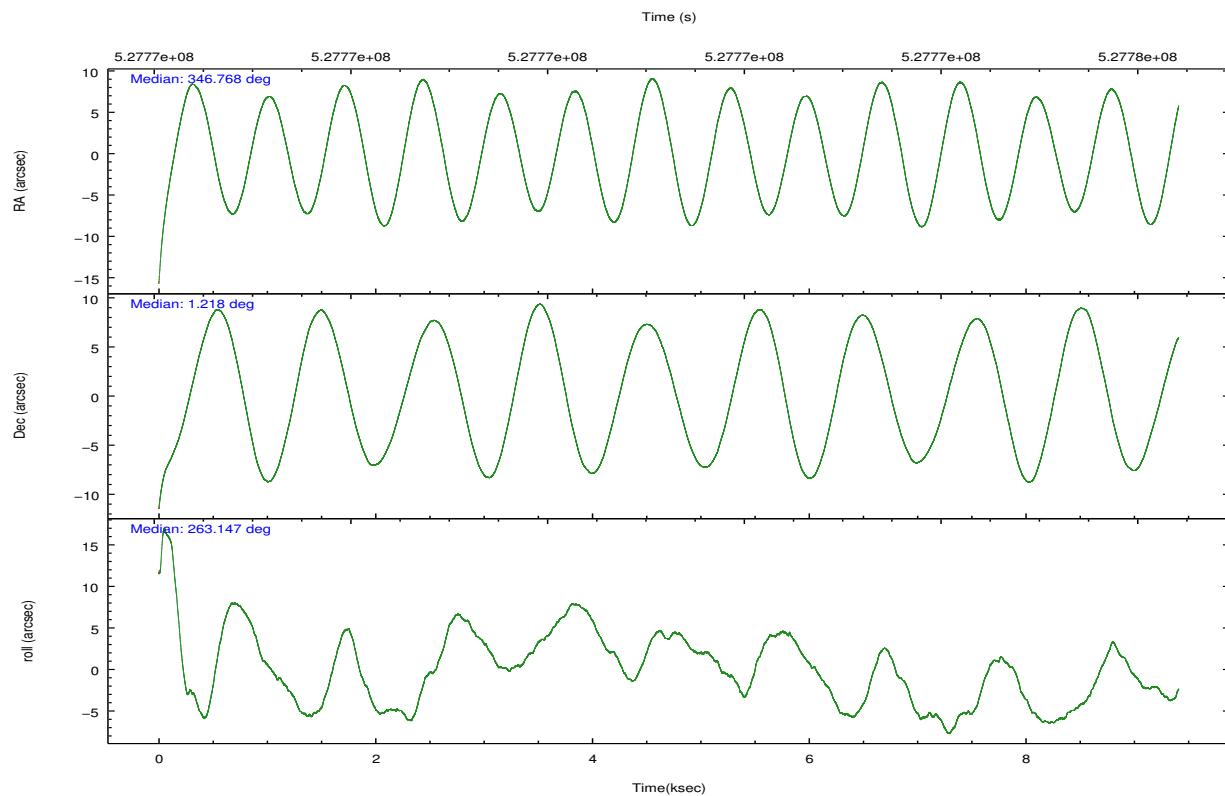
2.1.4 Events

	ccd 2	ccd 3	ccd 5	ccd 6	ccd 7	ccd 8		ccd 2	ccd 3	ccd 5	ccd 6	ccd 7	ccd 8
level 1 events	49563	48400	85806	51935	66787	66733	grade 0 events	1975	1919	4664	2137	2577	5293
rejected events	43813	42880	43670	45759	37498	48004		3%	3%	5%	4%	3%	7%
rejected %	88%	88%	50%	88%	56%	71%	grade 1 events	33	26	163	37	82	53
								0%	0%	0%	0%	0%	0%
							grade 2 events	1446	1190	13495	1394	6130	4561
								2%	2%	15%	2%	9%	6%
							grade 3 events	612	619	1294	607	2482	1886
								1%	1%	1%	1%	3%	2%
							grade 4 events	601	655	1288	615	2418	1810
								1%	1%	1%	1%	3%	2%
							grade 5 events	2196	2616	6092	2539	6888	3771
								4%	5%	7%	4%	10%	5%
							grade 6 events	1121	1143	21428	1428	15720	5191
								2%	2%	24%	2%	23%	7%
							grade 7 events	41579	40232	37382	43178	30490	44168
								83%	83%	43%	83%	45%	66%

2.2 Compared Parameters

Parameter	Planned	Actual	Parameter	Planned	Actual
Instrument	ACIS	ACIS	Obspar format version number	7	7
Detector	ACIS-235678	ACIS-235678	Obspar file type	PREDICTED	ACTUAL
Grating	NONE	NONE	Obspar update status	NONE	UPDATED
Data mode	VFAINT	VFAINT	CCD I0 on	N	N
Observation mode	POINTING	POINTING	CCD I1 on	N	N
[deg] Pointing RA	346.756657	346.7677753064519	CCD I2 on	O2	Y
[deg] Pointing Dec	1.242847	1.217728021285637	CCD I3 on	O3	Y
[deg] Pointing Roll	263.000187	263.1565741163624	CCD S0 on	N	N
[mm] SIM focus pos	-0.684267	-0.6828225247311905	CCD S1 on	O1	Y
[mm] SIM defocus	0	0.001444936568705701	CCD S2 on	O5	Y
[mm] SIM translation stage pos	-190.132523	-190.1400660498719	CCD S3 on	Y	Y
[mm] SIM translation stage offset	0	0.00754346686406393	CCD S4 on	O4	Y
[s] Observation start time (MET)	527766666.184000	527765367.68075	CCD S5 on	N	N
Observation start date	2014-09-22T09:49:59	2014-09-22T09:29:27	Number of optional ACIS chips dropped	0	0
[s] Observation end time (MET)	527775937.184000	527776162.98135	On-chip summing requested	N	N
Observation end date	2014-09-22T12:24:30	2014-09-22T12:29:22	Subarray requested	NONE	NONE
Read mode	TIMED	TIMED	Alternating exposures requested	N	N
			[s] Primary exposure time	0.000000	3.2

2.3 Aspect

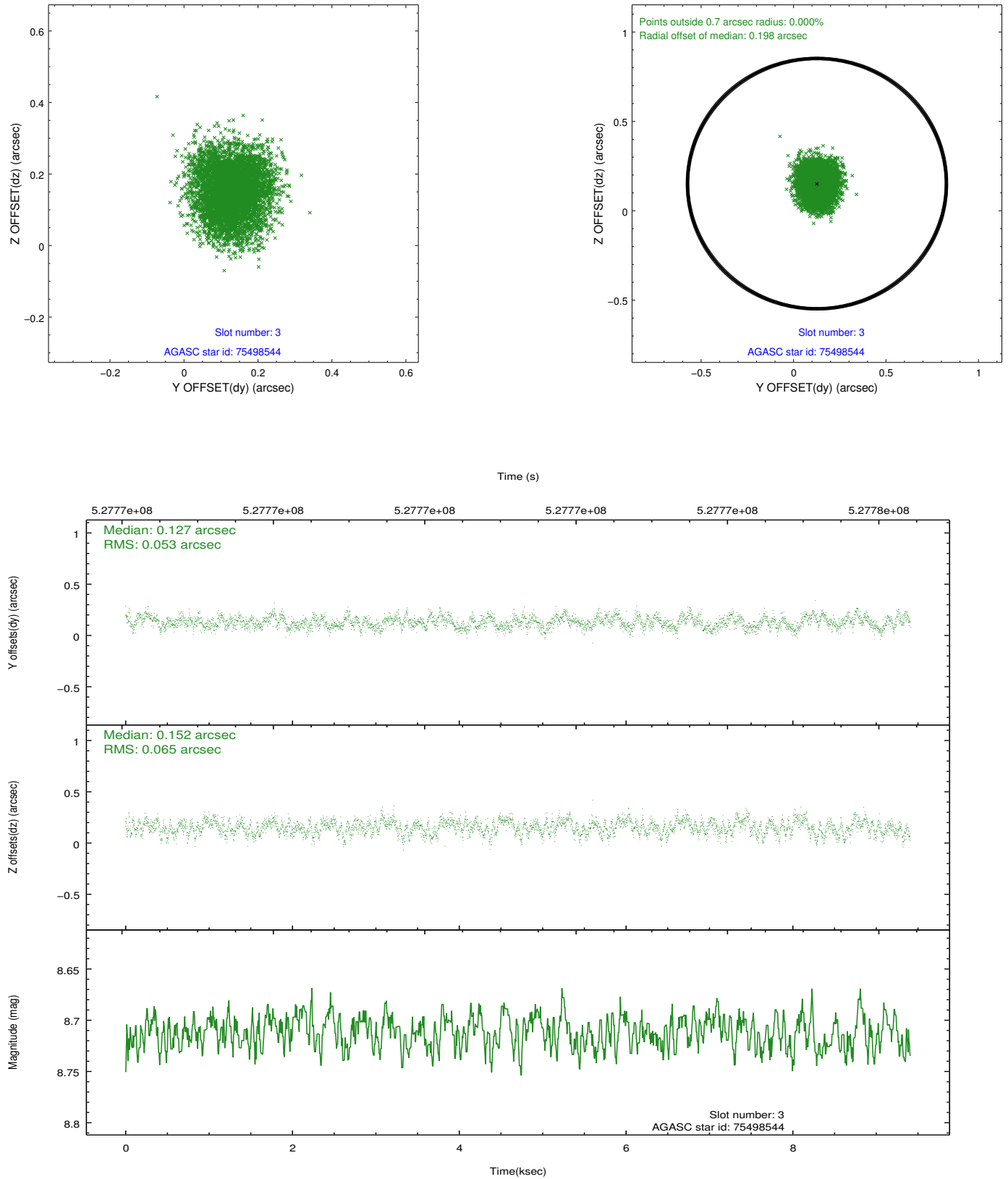


Slot Statistics

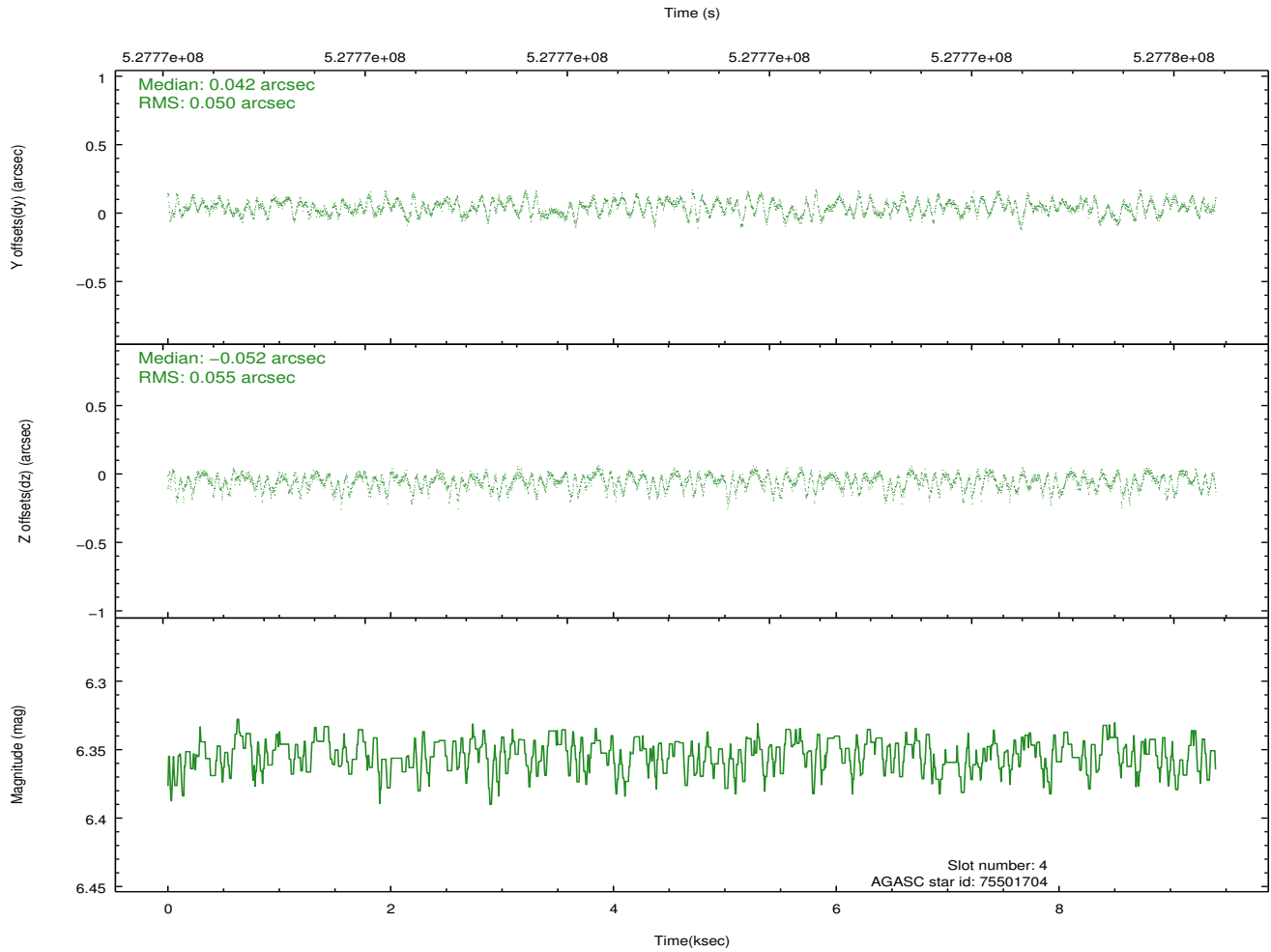
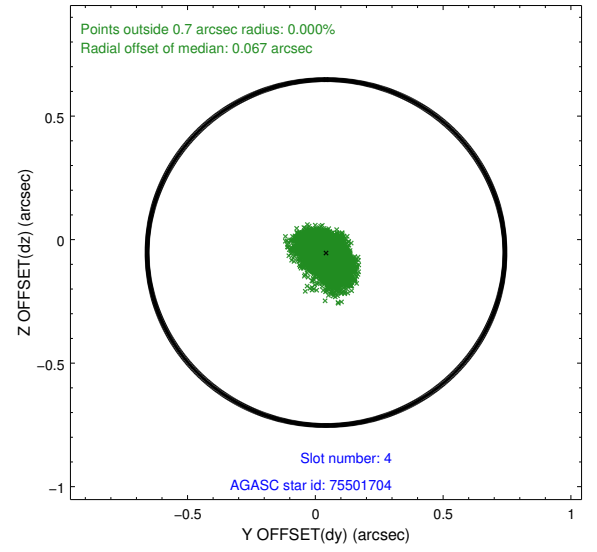
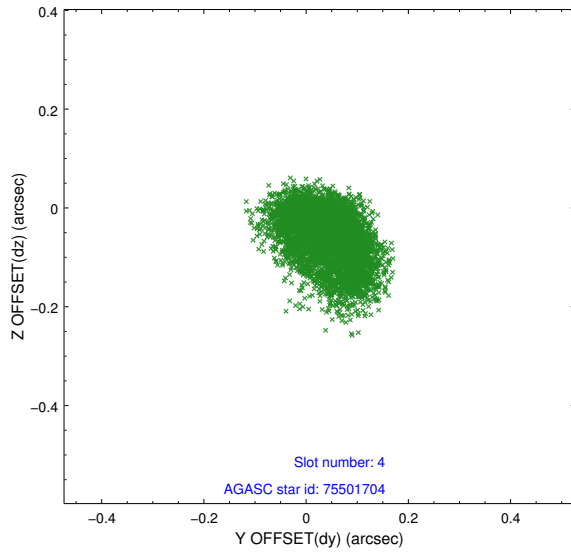
slot	status	id	mag	n_pts	med_dy	med_dz	dr1	dr2	ra	dec	mean_y	mean_z
0	FID	ACIS-S-2	6.94	2296	-0.154	-0.036	0.009	0.016	0.000000	0.000000	-779.41	-1744.48
1	FID	ACIS-S-4	7.03	2296	0.308	0.084	0.006	0.010	0.000000	0.000000	2134.08	163.48
2	FID	ACIS-S-5	7.06	2295	-0.185	-0.040	0.008	0.014	0.000000	0.000000	-1831.53	157.74
3	GUIDE	75498544	8.71	4588	0.127	0.152	0.091	0.143	346.364785	1.762635	-1683.83	-1626.81
4	GUIDE	75501704	6.35	4591	0.042	-0.052	0.080	0.128	346.323471	1.307128	-39.46	-1575.19
5	GUIDE	75503312	9.13	4585	-0.047	0.004	0.111	0.176	346.367663	1.124277	595.51	-1336.67
6	GUIDE	75505240	9.60	4509	-0.265	-0.286	0.117	0.194	347.227385	0.564421	2217.99	1979.89
7	GUIDE	75501144	7.98	4590	0.133	0.184	0.097	0.147	346.130460	1.595518	-982.42	-2391.91

2.4 Star Slots

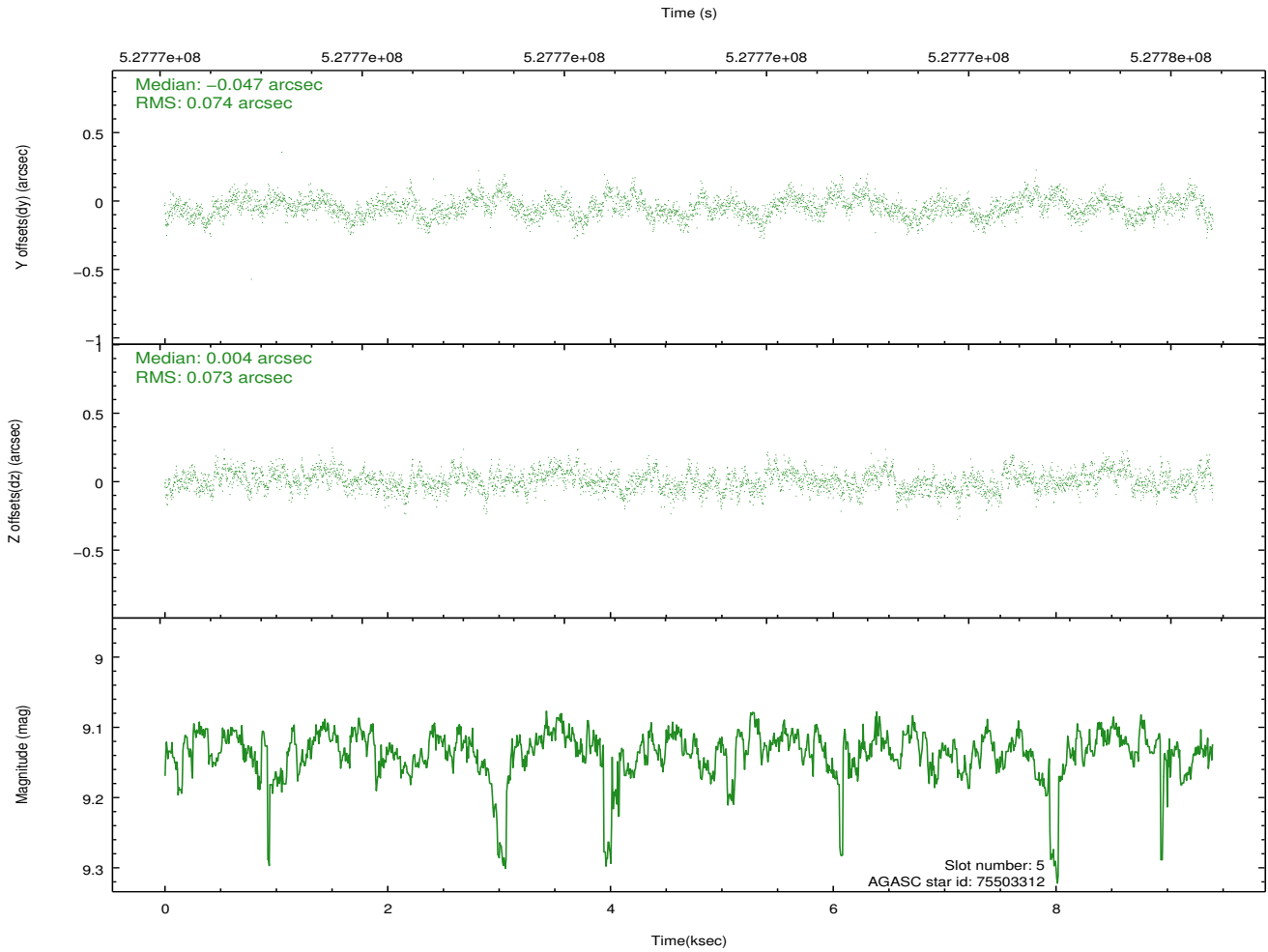
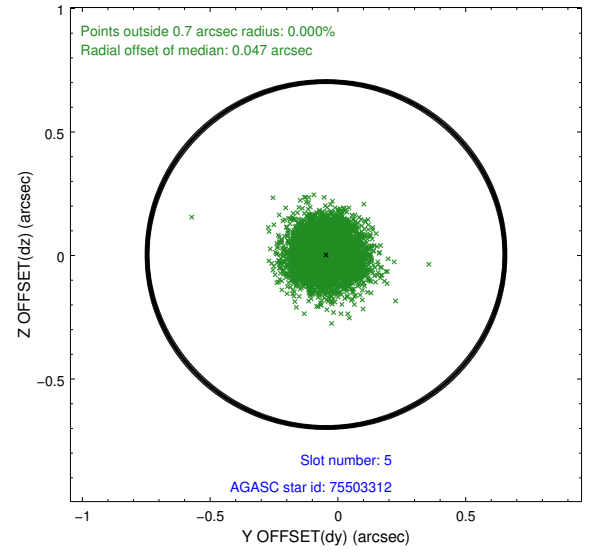
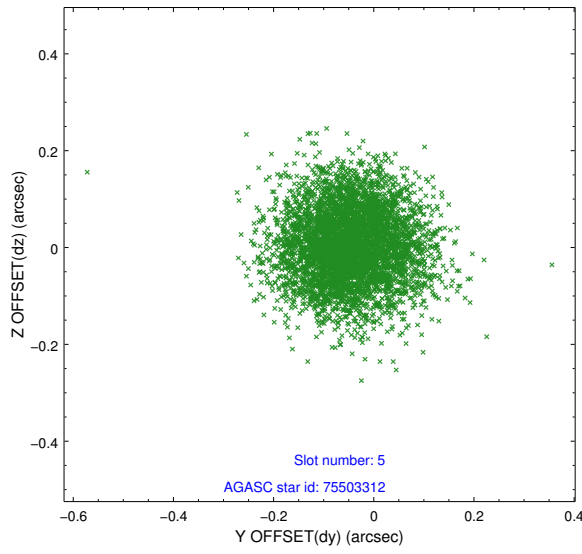
2.4.1 Slot 3



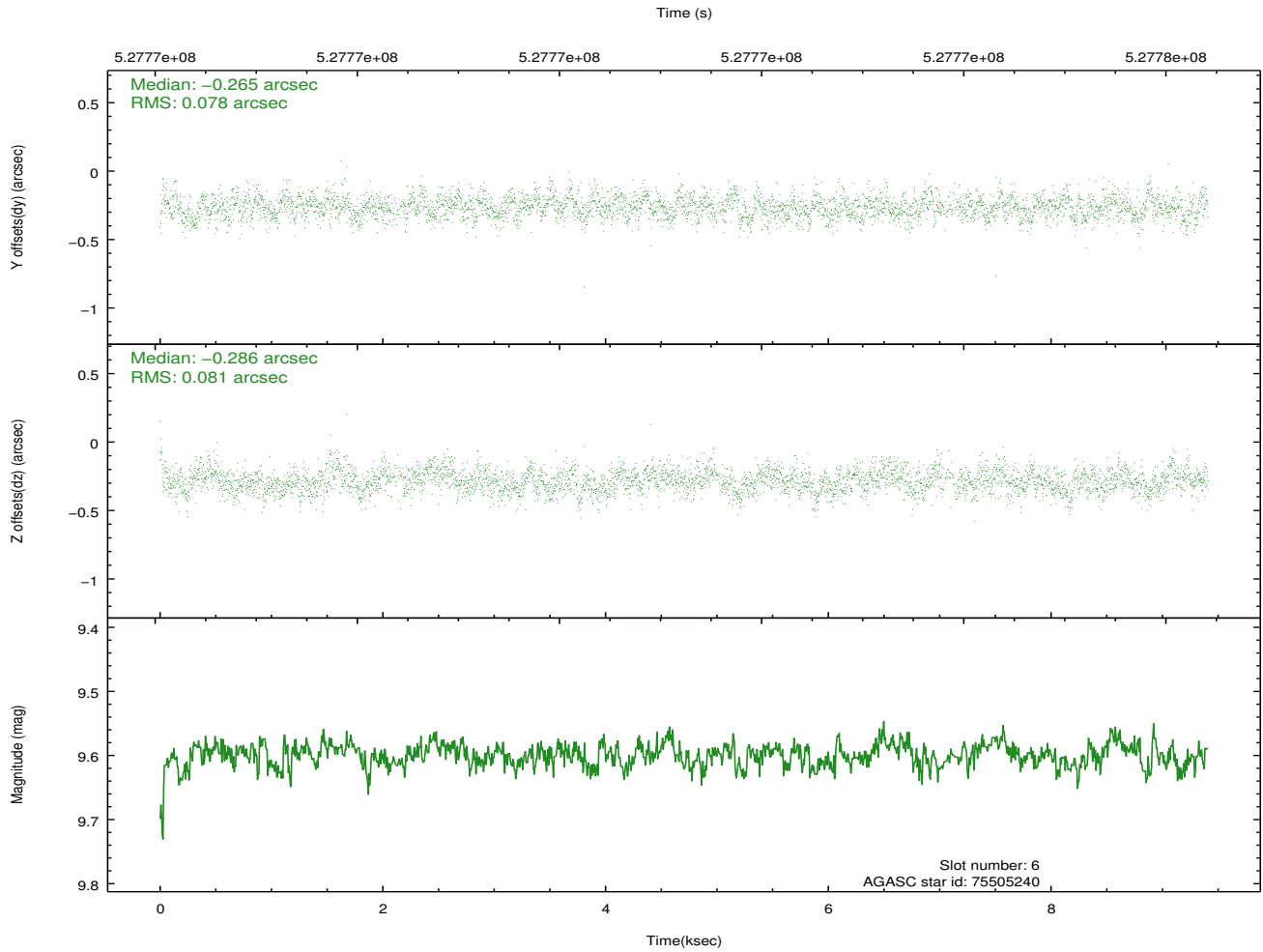
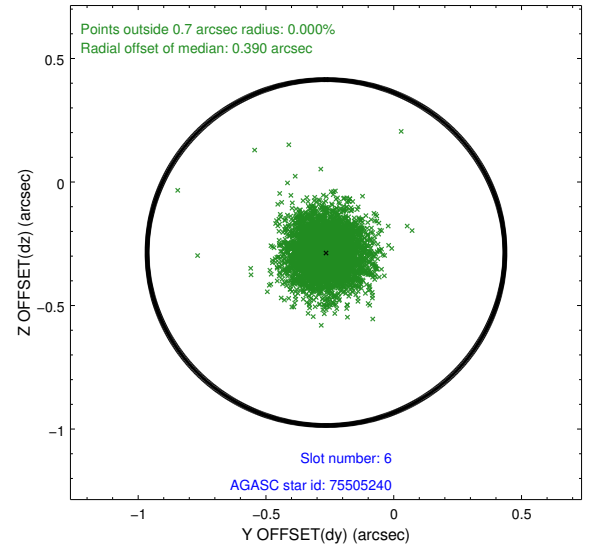
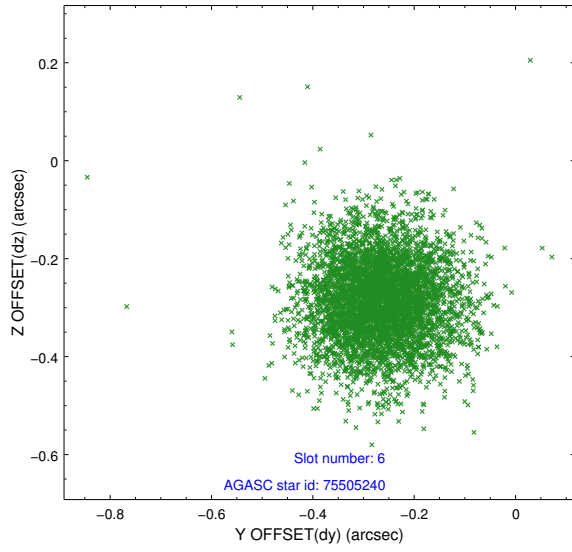
2.4.2 Slot 4



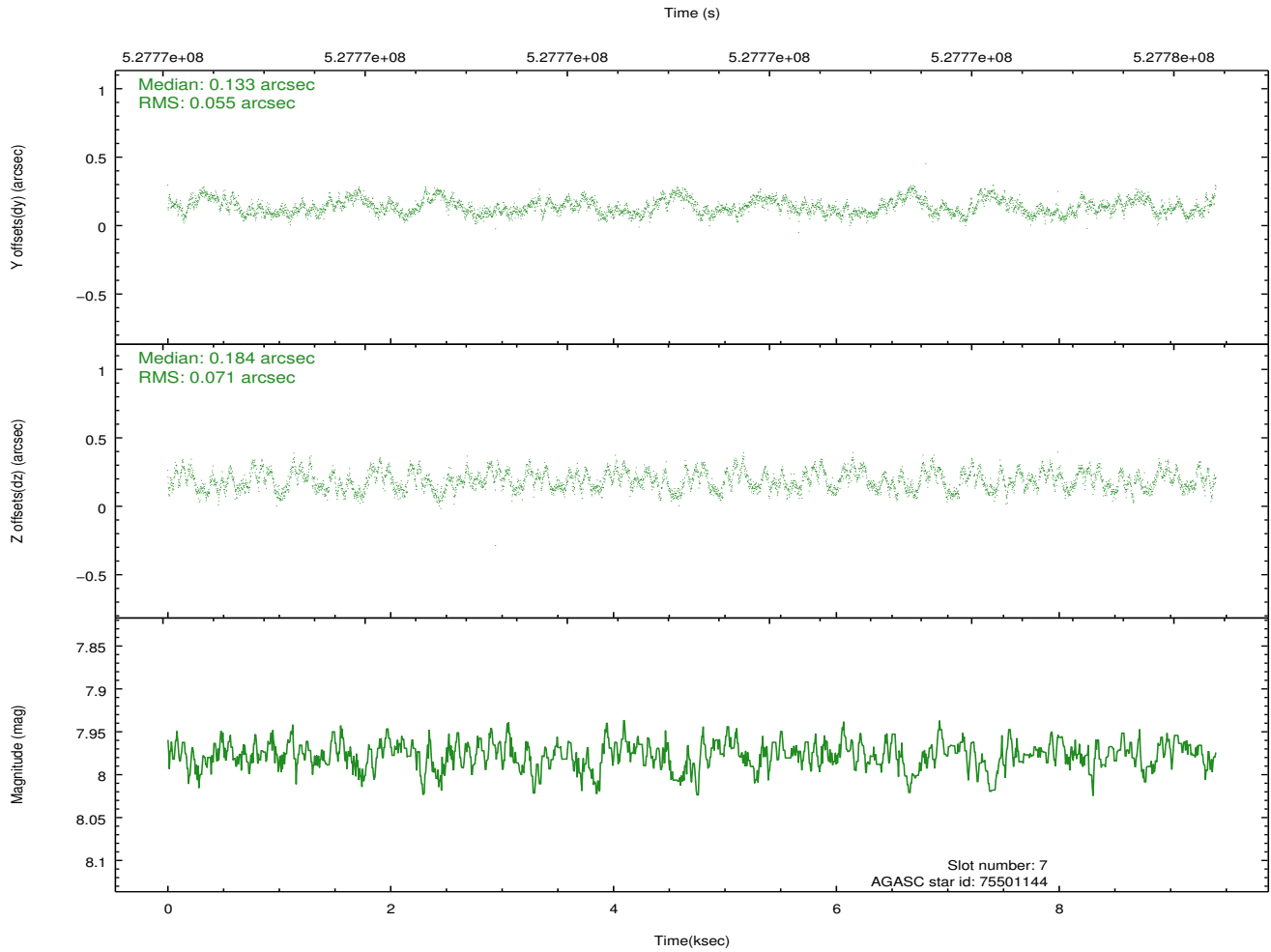
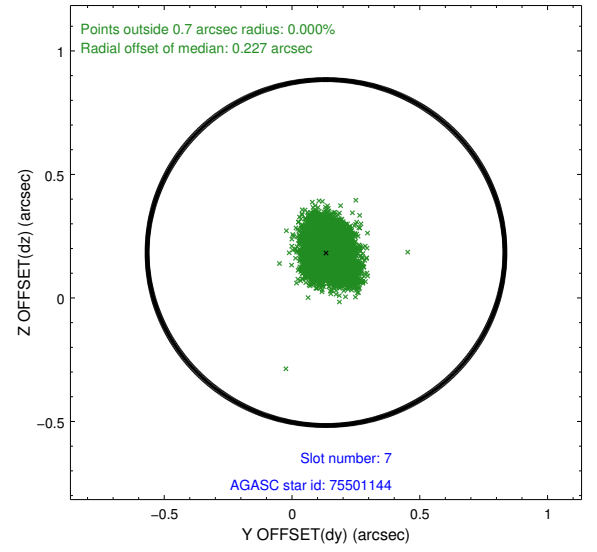
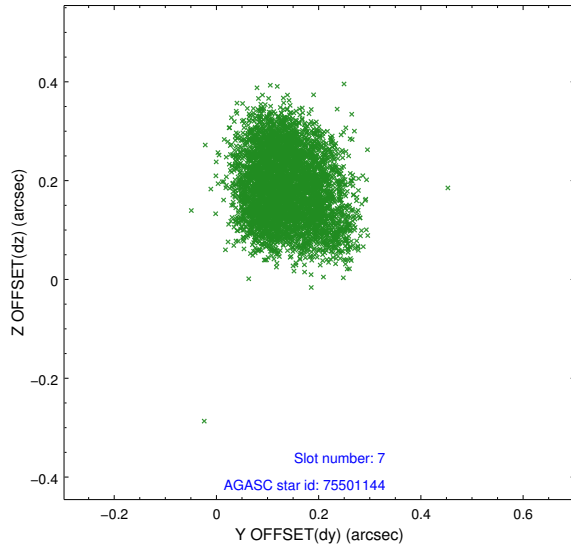
2.4.3 Slot 5



2.4.4 Slot 6

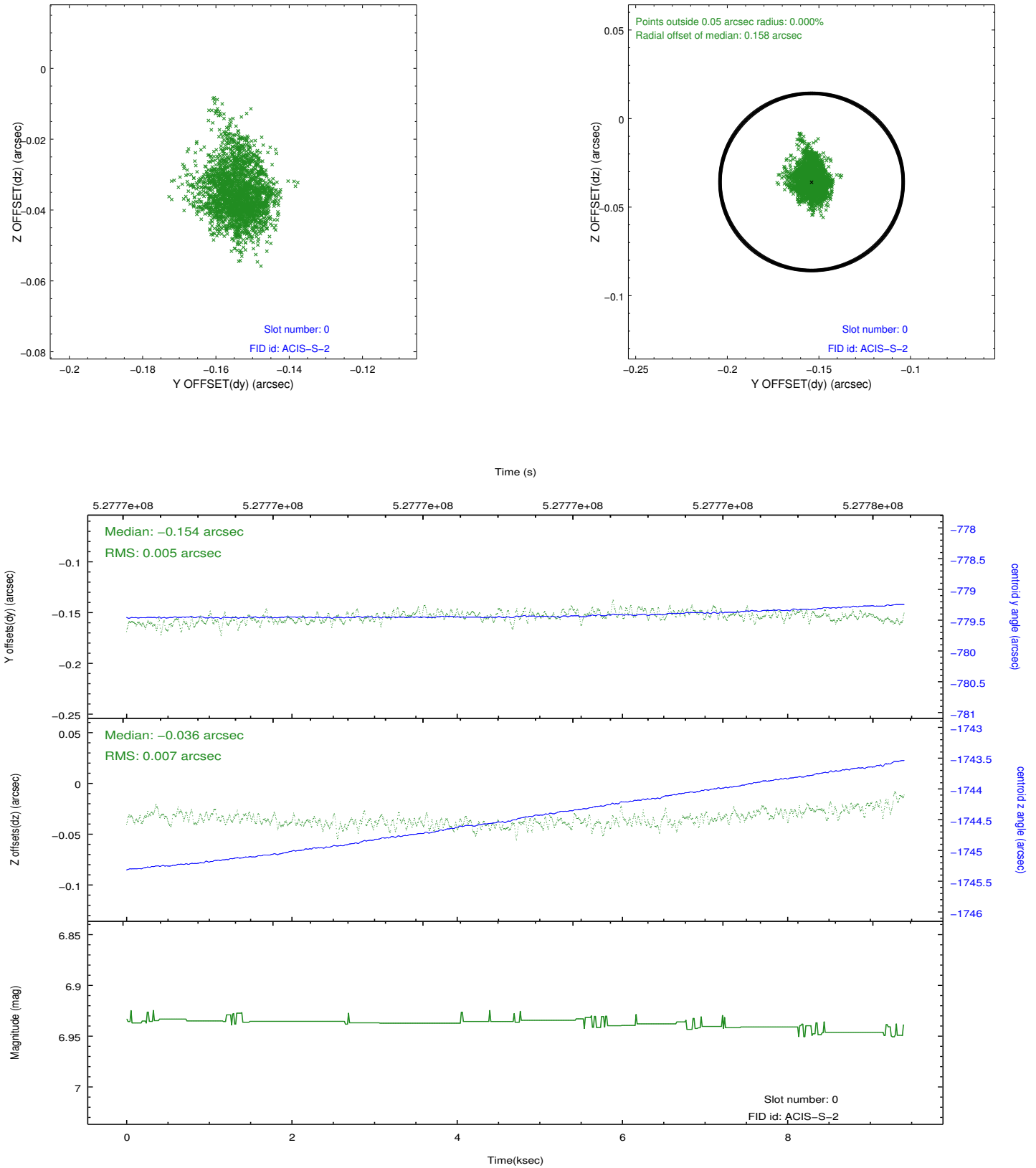


2.4.5 Slot 7

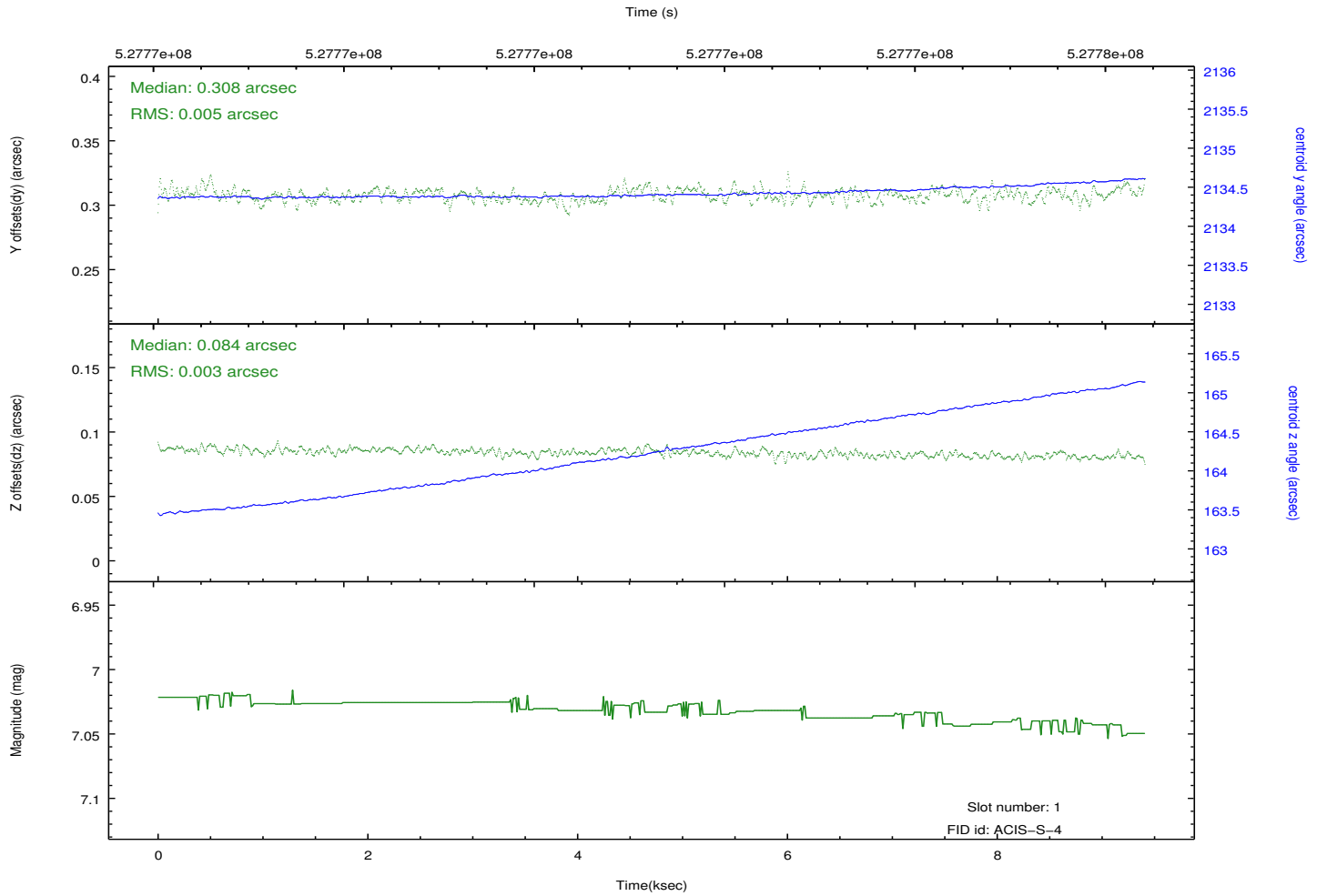
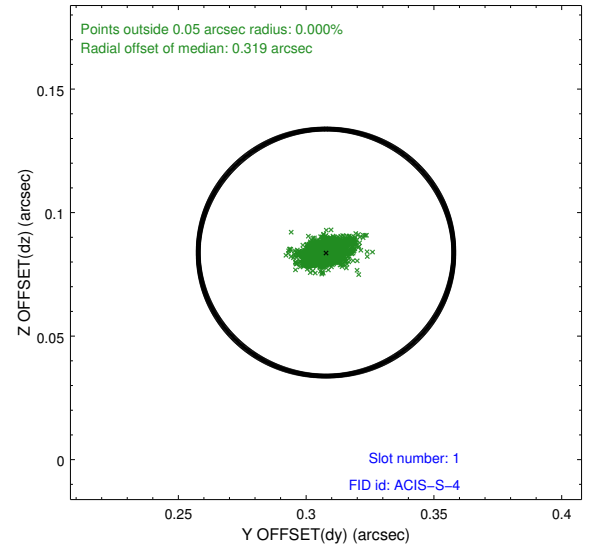
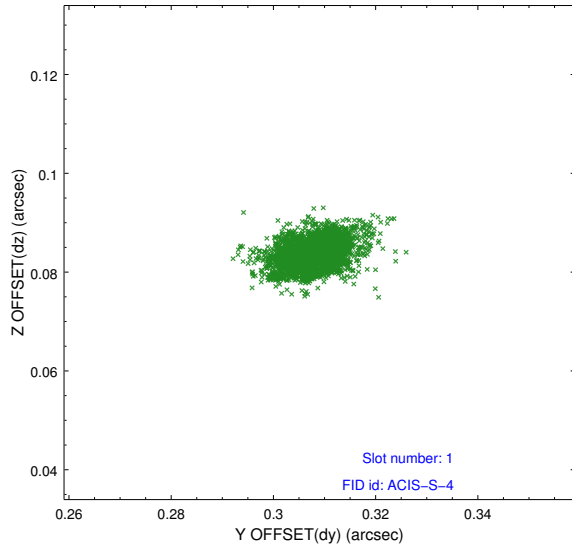


2.5 FID Slots

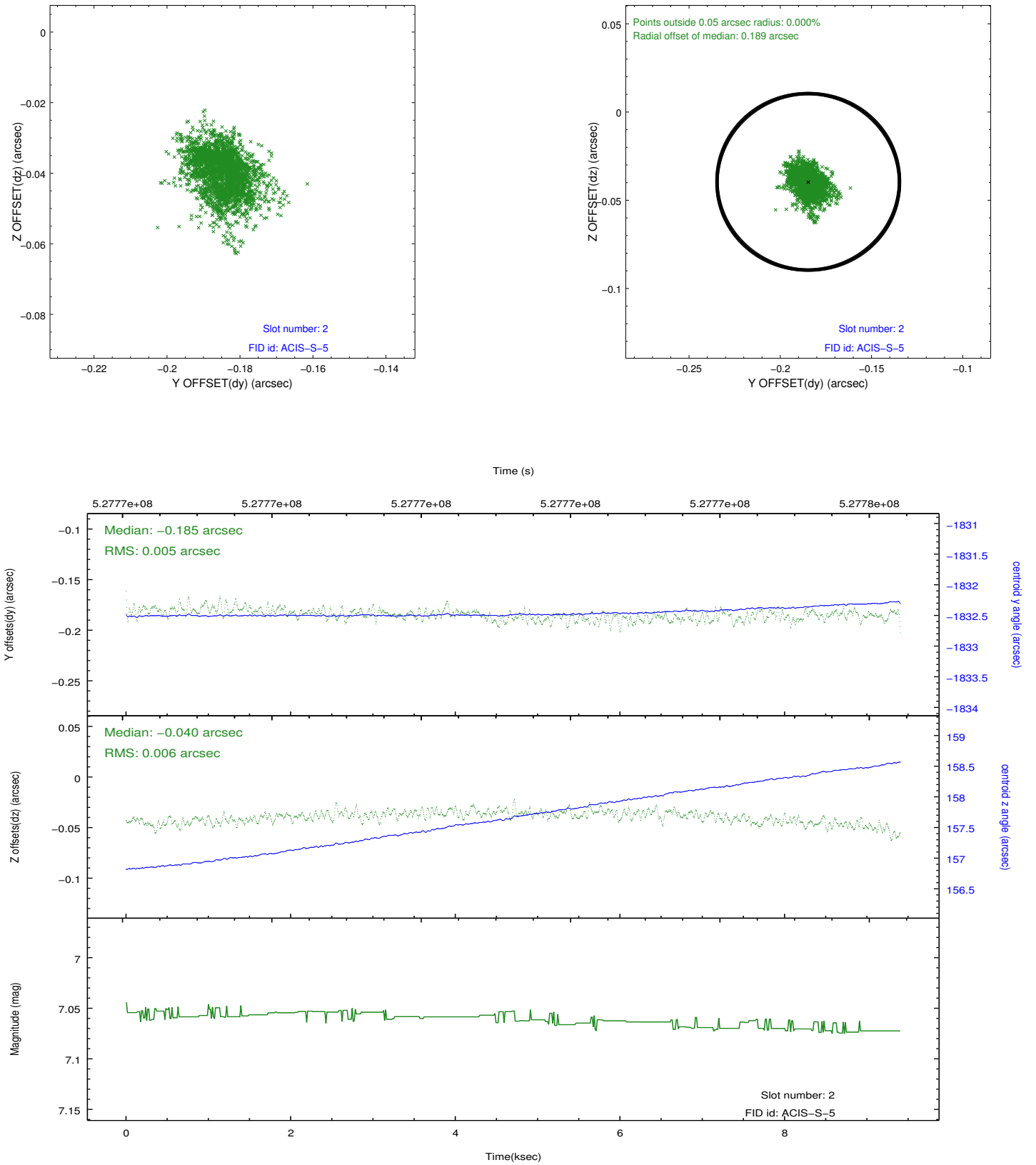
2.5.1 Slot 0



2.5.2 Slot 1



2.5.3 Slot 2



A Summary

A.1 Status

V&V Scientist	Beth Sundheim
V&V Date (YYYY-MM-DD)	2014.09.23
V&V Edition	1
V&V Disposition and Status	OK
V&V Charge Time	9.231064745307

A.2 Comments