

V&V Reference Report

L2 ASCDS Version : 10.2.4

Observation 17422 - L2 Version 1
Chandra X-Ray Center

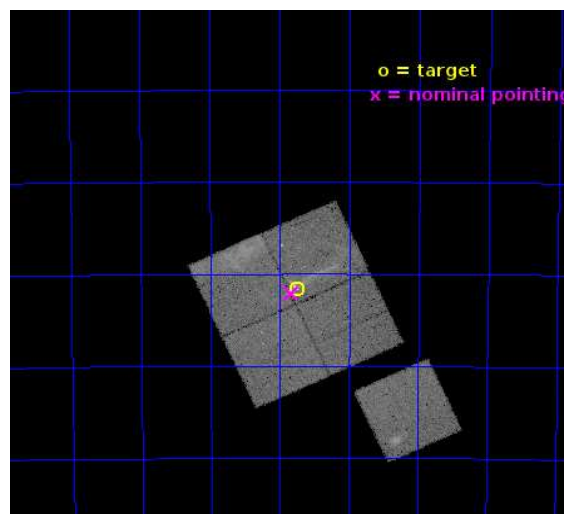
L2 Processing Date : Oct 2 2014

Contents

1	Front	2
2	OBI	3
2.1	OBI	3
2.1.1	Images	3
2.1.2	Bias	3
2.1.3	Parameters	4
2.1.4	Events	4
2.2	Compared Parameters	5
2.3	Aspect	6
2.4	Star Slots	9
2.4.1	Slot 3	9
2.4.2	Slot 4	10
2.4.3	Slot 5	11
2.4.4	Slot 6	12
2.4.5	Slot 7	13
2.5	FID Slots	14
2.5.1	Slot 0	14
2.5.2	Slot 1	15
2.5.3	Slot 2	16
A	Summary	17
A.1	Status	17
A.2	Comments	17

1 Front

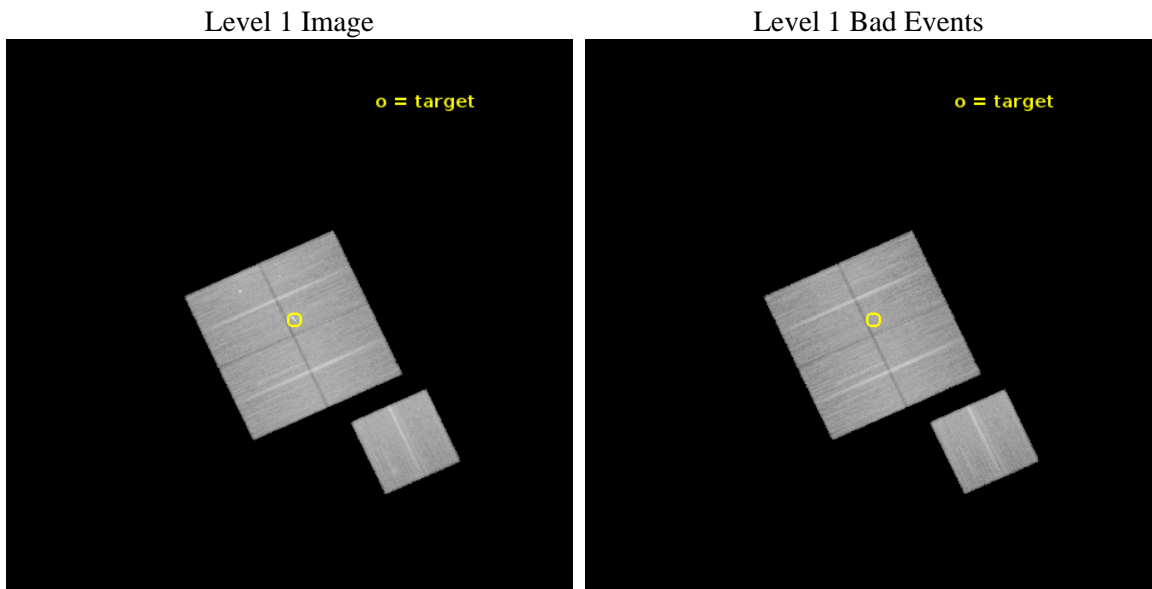
seq_num	502240	Sequence number
obs_id	17422	Observation id
title	DEEP STUDY OF THE 20PC-LONG PRECESSING JET IN IGR J11014-6103	Prop
observer	Dr Lucia Pavan	Principal investigator
object	IGR J11014-6103	Source name
dtcycle	0	
cycle	P	events from which exps? Prim/Second/Both
ra_targ	165.4375	Observer's specified target RA [deg]
dec_targ	-61.027667	Observer's specified target Dec [deg]
ra_nom	165.45817378424	Nominal RA [deg]
dec_nom	-61.035066639076	Nominal Dec [deg]
roll_nom	155.22677174109	Nominal Roll [deg]
revision	1	Processing version of data
ontime	50080.459394813	Sum of GTIs [s]
livetime	49426.121324122	Livetime [s]
ontime0	50080.459394813	Sum of GTIs [s]
ontime1	50080.45941484	Sum of GTIs [s]
ontime2	50077.318424463	Sum of GTIs [s]
ontime3	50083.600385189	Sum of GTIs [s]
ontime6	50080.45941484	Sum of GTIs [s]
l2events	150739	Number of level 2 events



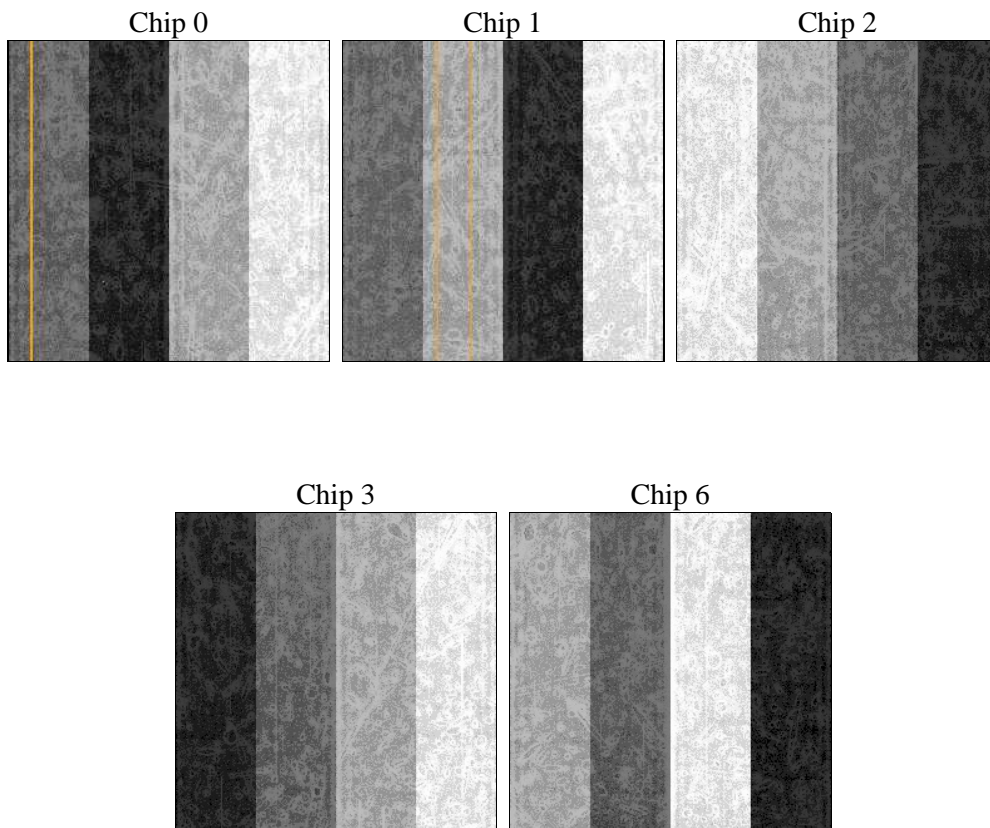
2 OBI

2.1 OBI

2.1.1 Images



2.1.2 Bias



2.1.3 Parameters

obi_num	0	Obi number	sched_exp_time	50000.000000	[s] Scheduled observation exposure time
ascdsver	10.2.4	Processing system revision	ontime	50080.459394813	Sum of GTIs [s]
caldbver	4.6.3	 	ontime0	50080.459394813	Sum of GTIs [s]
date	2014-10-02T19:44:32	Date and time of file creation	ontime1	50080.45941484	Sum of GTIs [s]
revision	1	Processing version of data	ontime2	50077.318424463	Sum of GTIs [s]
			ontime3	50083.600385189	Sum of GTIs [s]
			ontime6	50080.45941484	Sum of GTIs [s]
			l1events	1213919	Number of level 1 events

2.1.4 Events

	ccd 0	ccd 1	ccd 2	ccd 3	ccd 6
level 1 events	239114	236019	243019	248893	246874
rejected events	198782	194461	212099	217597	214950
rejected %	83%	82%	87%	87%	87%

	ccd 0	ccd 1	ccd 2	ccd 3	ccd 6
grade 0 events	18521	18929	12005	12675	11922
	7%	8%	4%	5%	4%
grade 1 events	157	165	142	151	133
	0%	0%	0%	0%	0%
grade 2 events	8714	8643	7387	6703	6829
	3%	3%	3%	2%	2%
grade 3 events	3448	3415	2964	2914	3197
	1%	1%	1%	1%	1%
grade 4 events	3319	3500	2929	2960	3040
	1%	1%	1%	1%	1%
grade 5 events	11680	12309	10983	13137	12543
	4%	5%	4%	5%	5%
grade 6 events	6334	7076	5641	6046	6941
	2%	2%	2%	2%	2%
grade 7 events	186941	181982	200968	204307	202269
	78%	77%	82%	82%	81%

2.2 Compared Parameters

Parameter	Planned	Actual	Parameter	Planned	Actual
Instrument	ACIS	ACIS	Obspar format version number	7	7
Detector	ACIS-01236	ACIS-01236	Obspar file type	PREDICTED	ACTUAL
Grating	NONE	NONE	Obspar update status	NONE	UPDATED
Data mode	VFAINT	VFAINT	CCD I0 on	Y	Y
Observation mode	POINTING	POINTING	CCD I1 on	Y	Y
[deg] Pointing RA	165.514903	165.4581737842367	CCD I2 on	Y	Y
[deg] Pointing Dec	-61.032433	-61.0350666390761	CCD I3 on	Y	Y
[deg] Pointing Roll	155.067714	155.2267717410887	CCD S0 on	N	N
[mm] SIM focus pos	-0.782348	-0.7809083437167272	CCD S1 on	N	N
[mm] SIM defocus	0	0.001439871863259334	CCD S2 on	O1	Y
[mm] SIM translation stage pos	-239.592463	-239.5815621397477	CCD S3 on	N	N
[mm] SIM translation stage offset	6	5.98910913681803	CCD S4 on	N	N
[s] Observation start time (MET)	528567233.184000	528566140.77523	CCD S5 on	N	N
Observation start date	2014-10-01T16:12:46	2014-10-01T15:55:40	Number of optional ACIS chips dropped	0	0
[s] Observation end time (MET)	528617233.184000	528617886.87811	On-chip summing requested	N	N
Observation end date	2014-10-02T06:06:06	2014-10-02T06:18:06	Subarray requested	NONE	NONE
Read mode	TIMED	TIMED	Alternating exposures requested	N	N
			[s] Primary exposure time	0.000000	3.1

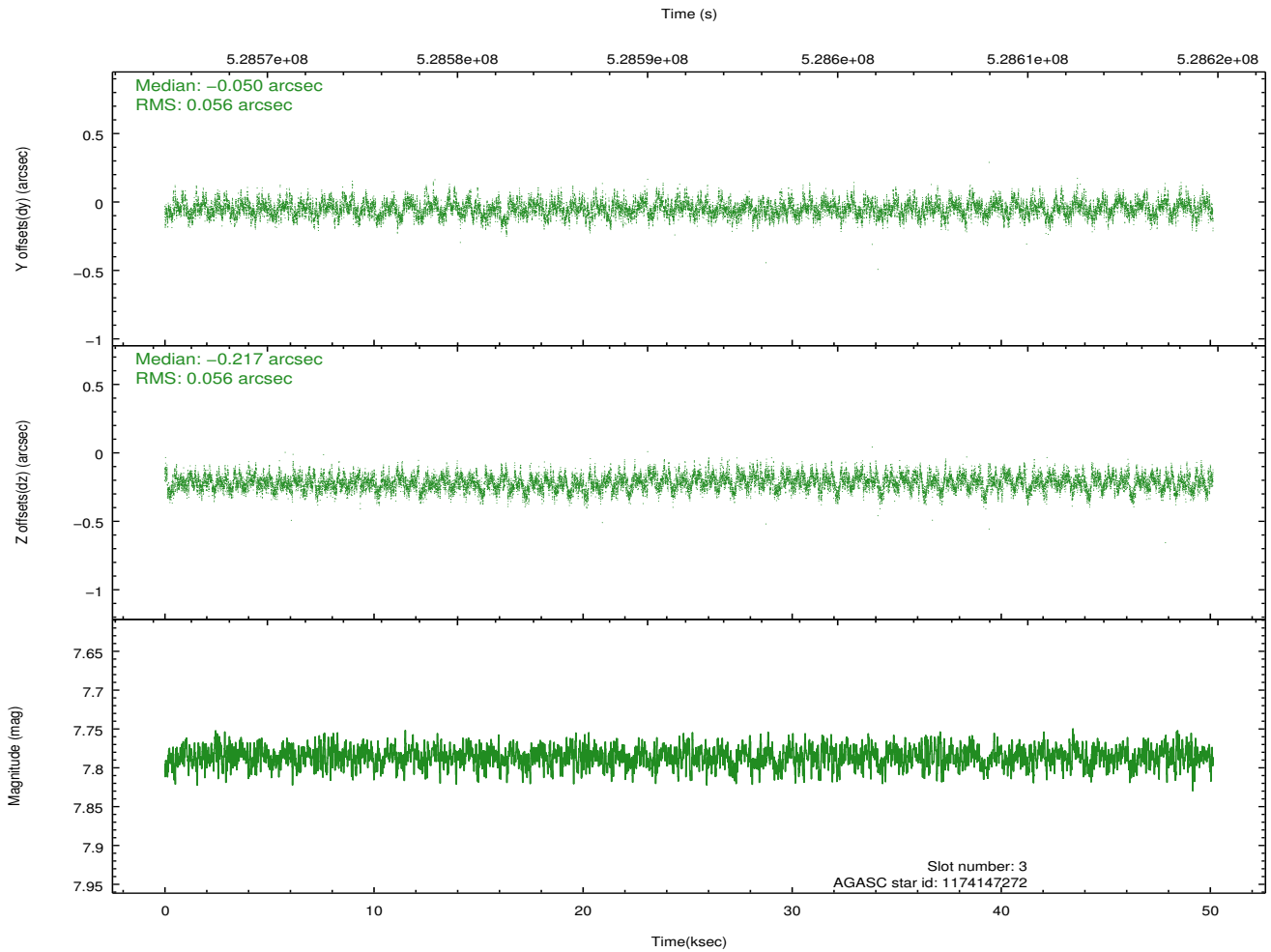
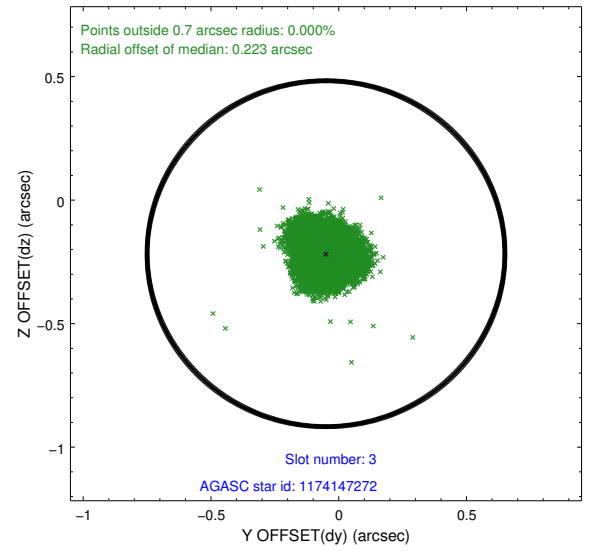
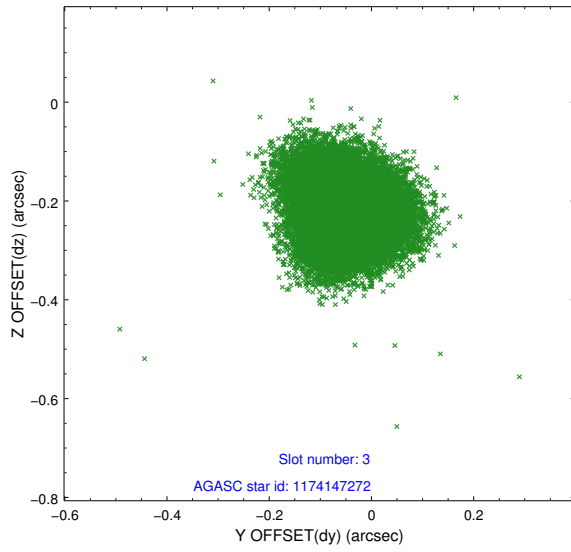
2.3 Aspect

Slot Statistics

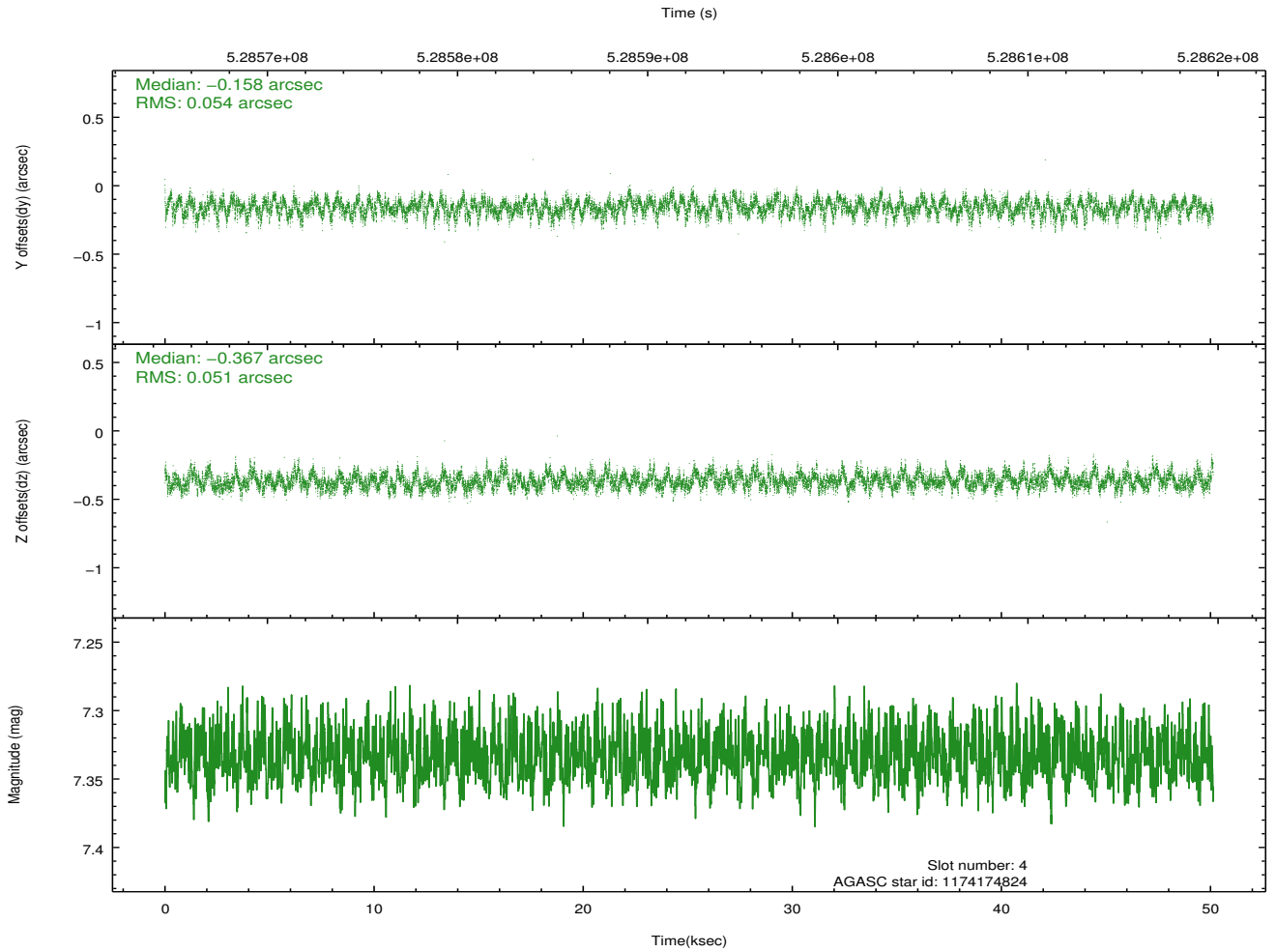
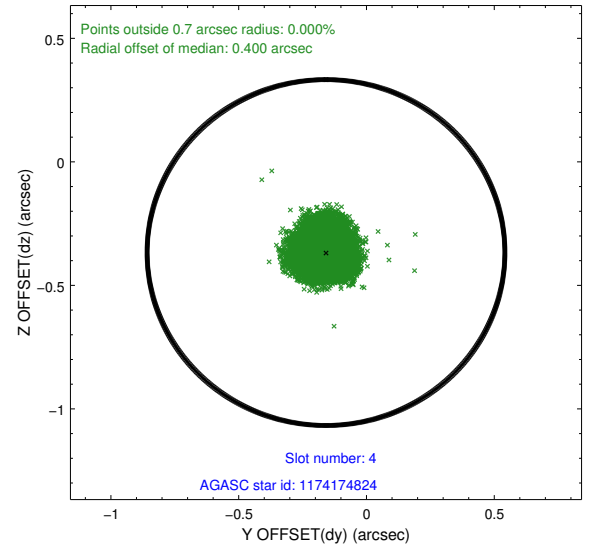
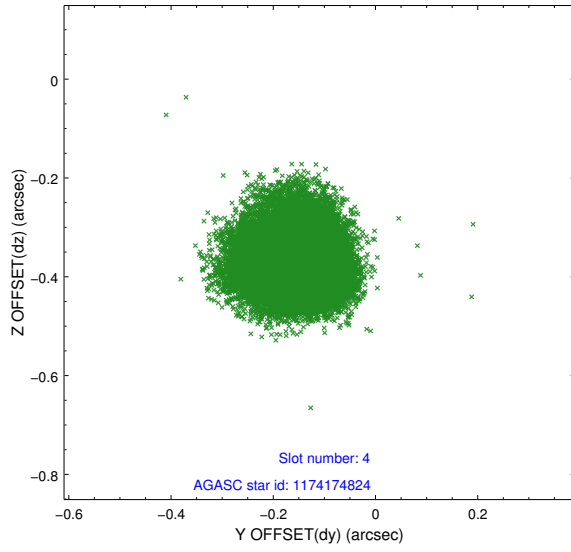
slot	status	id	mag	n_pts	med_dy	med_dz	dr1	dr2	ra	dec	mean_y	mean_z
0	FID	ACIS-I-4	7.07	12226	0.147	-0.048	0.013	0.024	0.000000	0.000000	2132.77	1175.15
1	BAD	ACIS-I-5	7.11	4658	-0.533	0.208	0.053	0.084	0.000000	0.000000	-1836.64	1174.39
2	FID	ACIS-I-6	7.07	12227	-0.216	0.088	0.013	0.024	0.000000	0.000000	377.62	1818.00
3	GUIDE	1174147272	7.79	24451	-0.050	-0.217	0.084	0.135	165.413771	-61.562087	-646.64	1802.09
4	GUIDE	1174174824	7.33	24452	-0.158	-0.367	0.080	0.124	164.692322	-60.862830	1561.12	62.38
5	GUIDE	1174178176	8.06	24450	0.130	0.124	0.110	0.185	165.154949	-60.304034	1687.63	-2105.21
6	GUIDE	1174156832	7.06	24453	-0.227	-0.006	0.073	0.122	166.121036	-61.488309	-1638.18	1053.65
7	GUIDE	1174278696	8.70	24446	0.297	0.458	0.107	0.168	167.215683	-60.759417	-2313.14	-2116.51

2.4 Star Slots

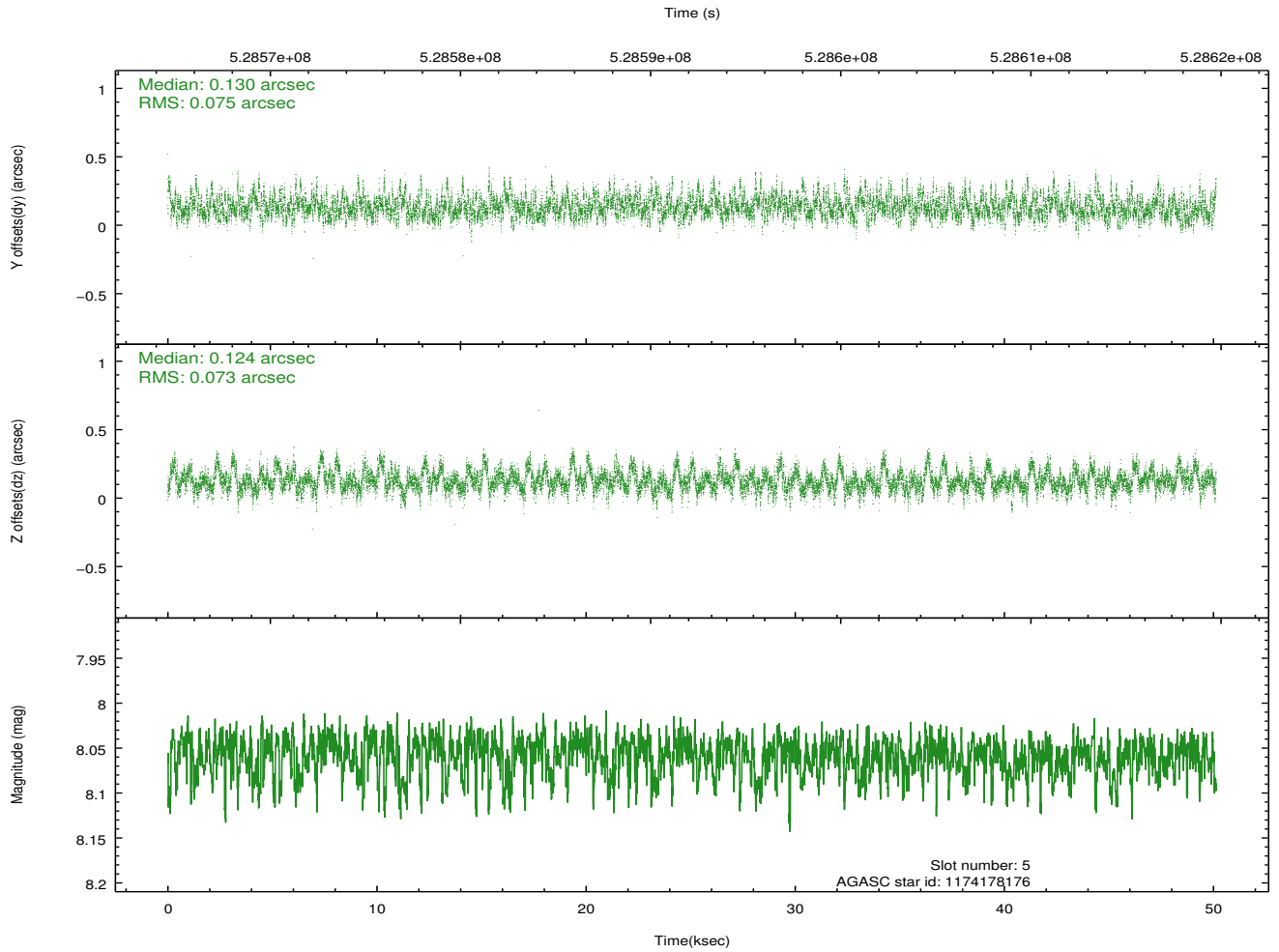
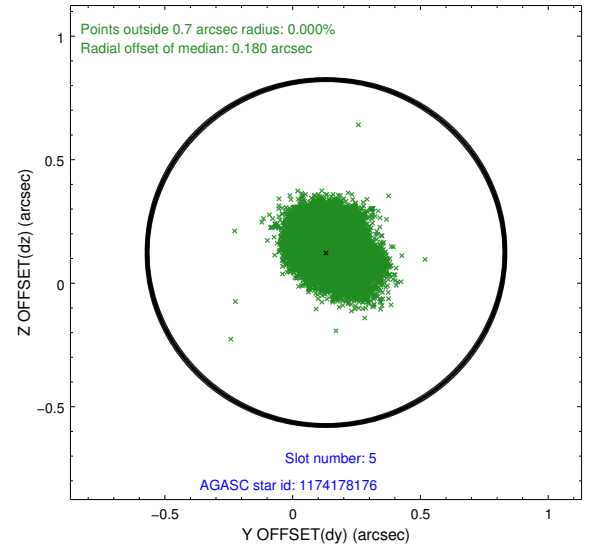
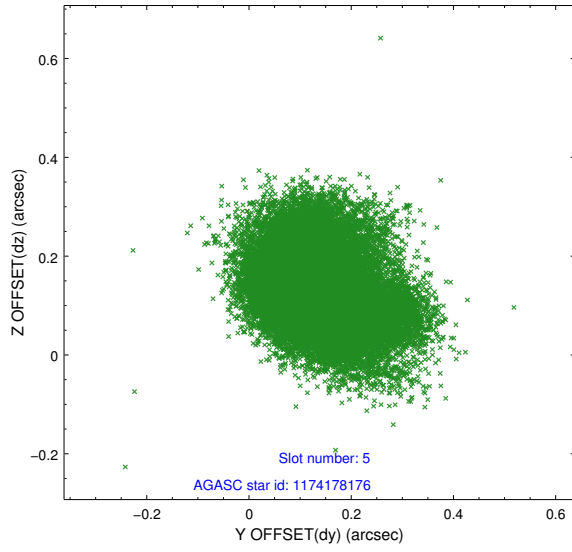
2.4.1 Slot 3



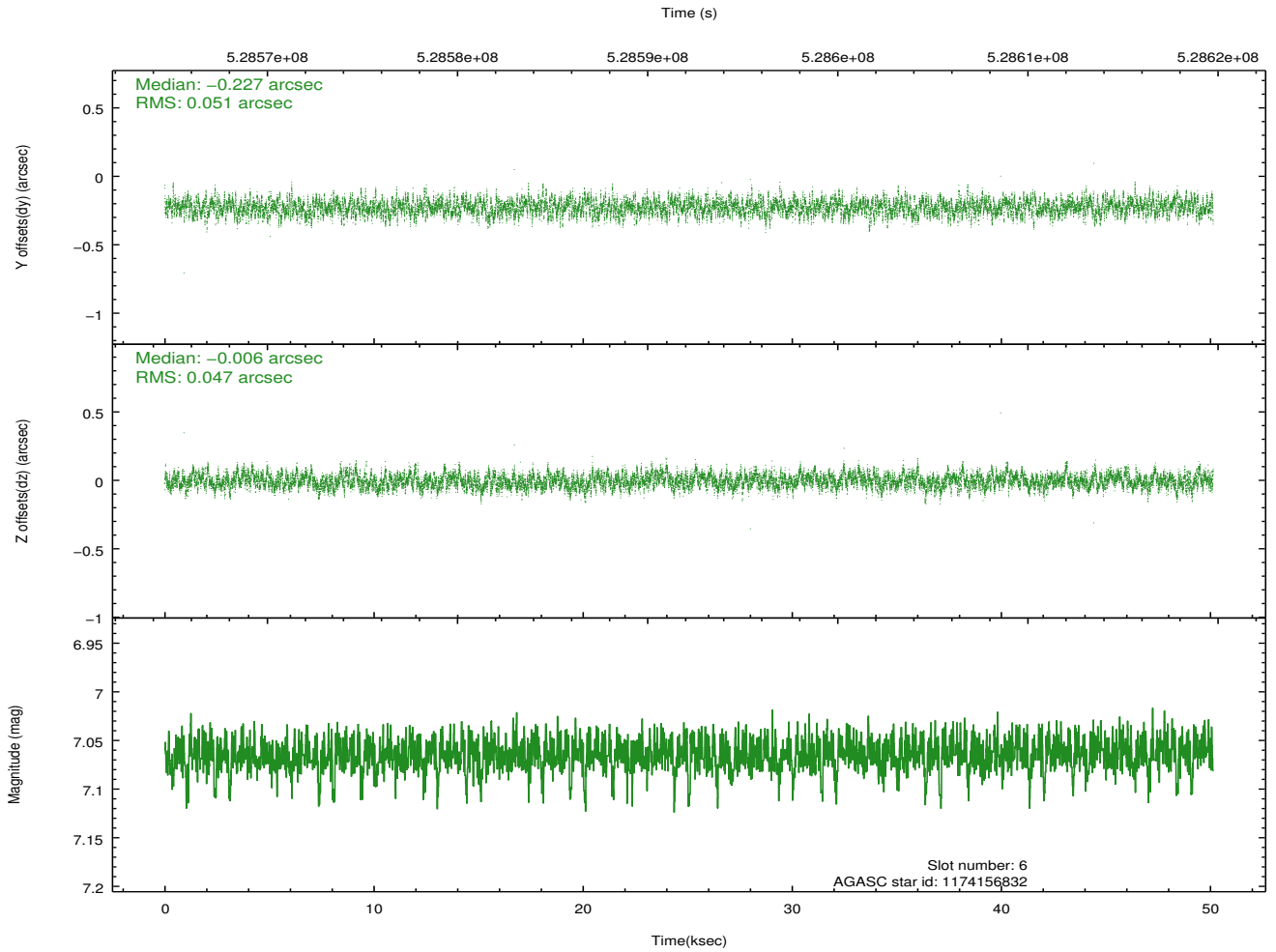
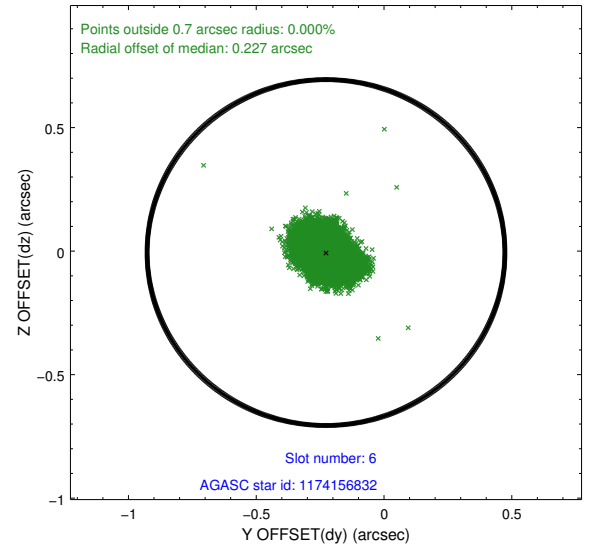
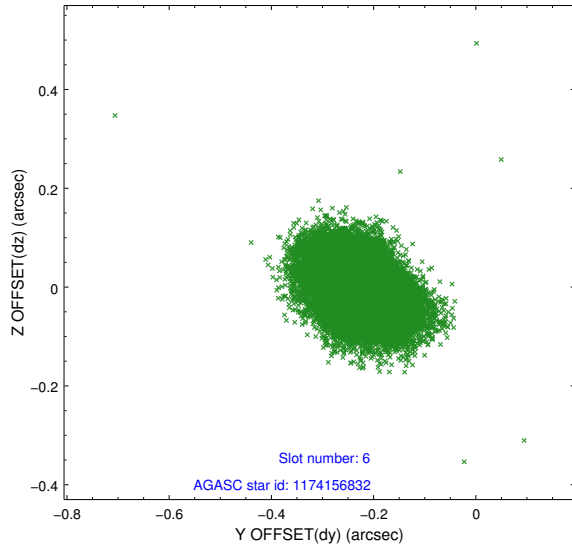
2.4.2 Slot 4



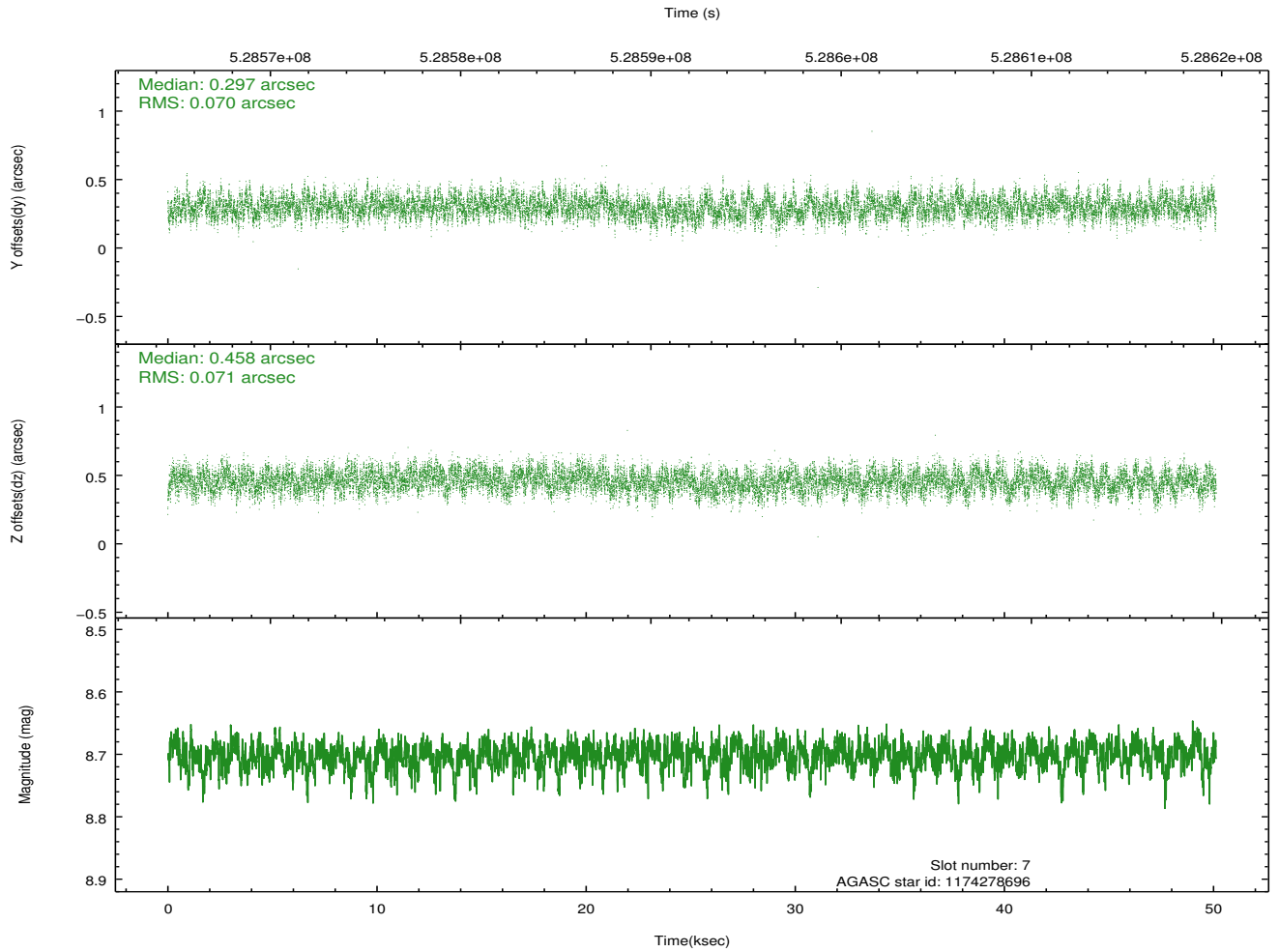
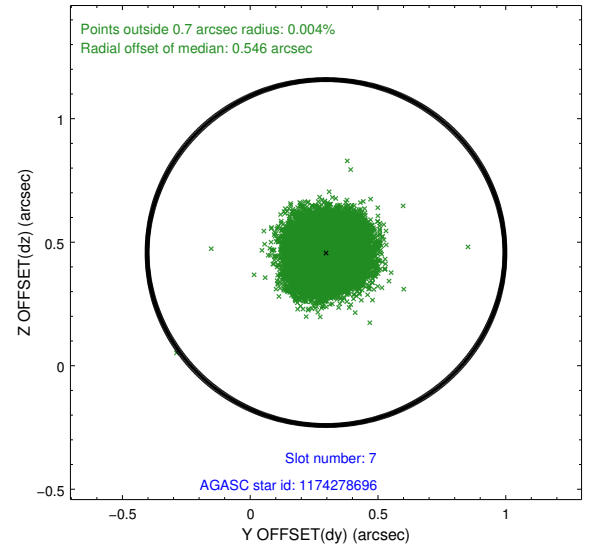
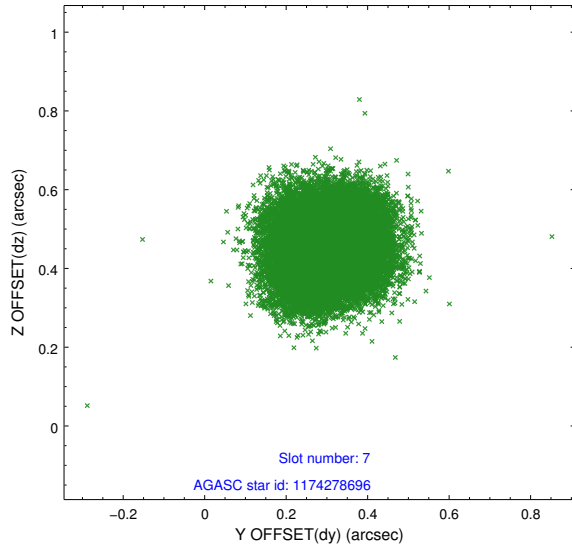
2.4.3 Slot 5



2.4.4 Slot 6

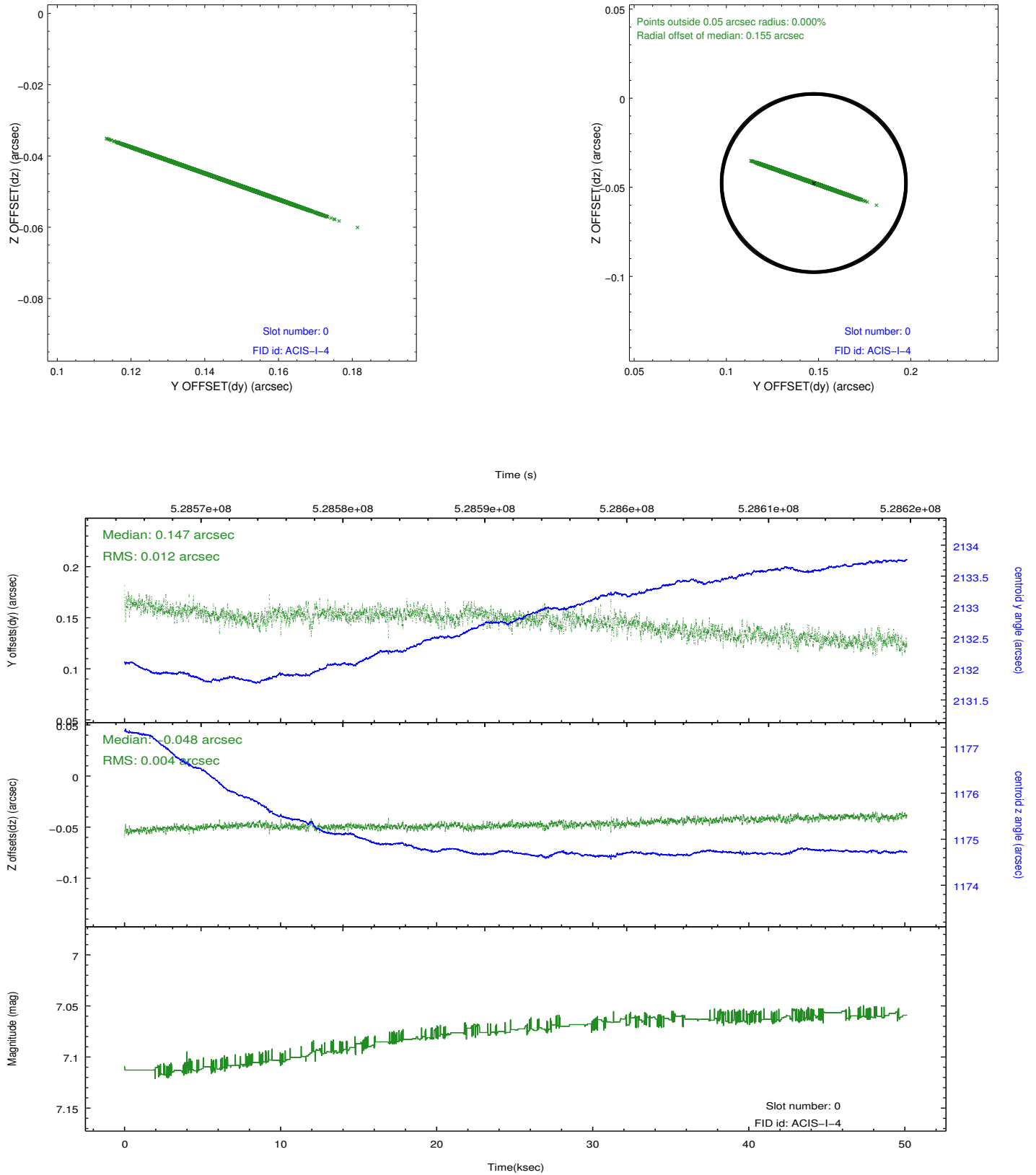


2.4.5 Slot 7

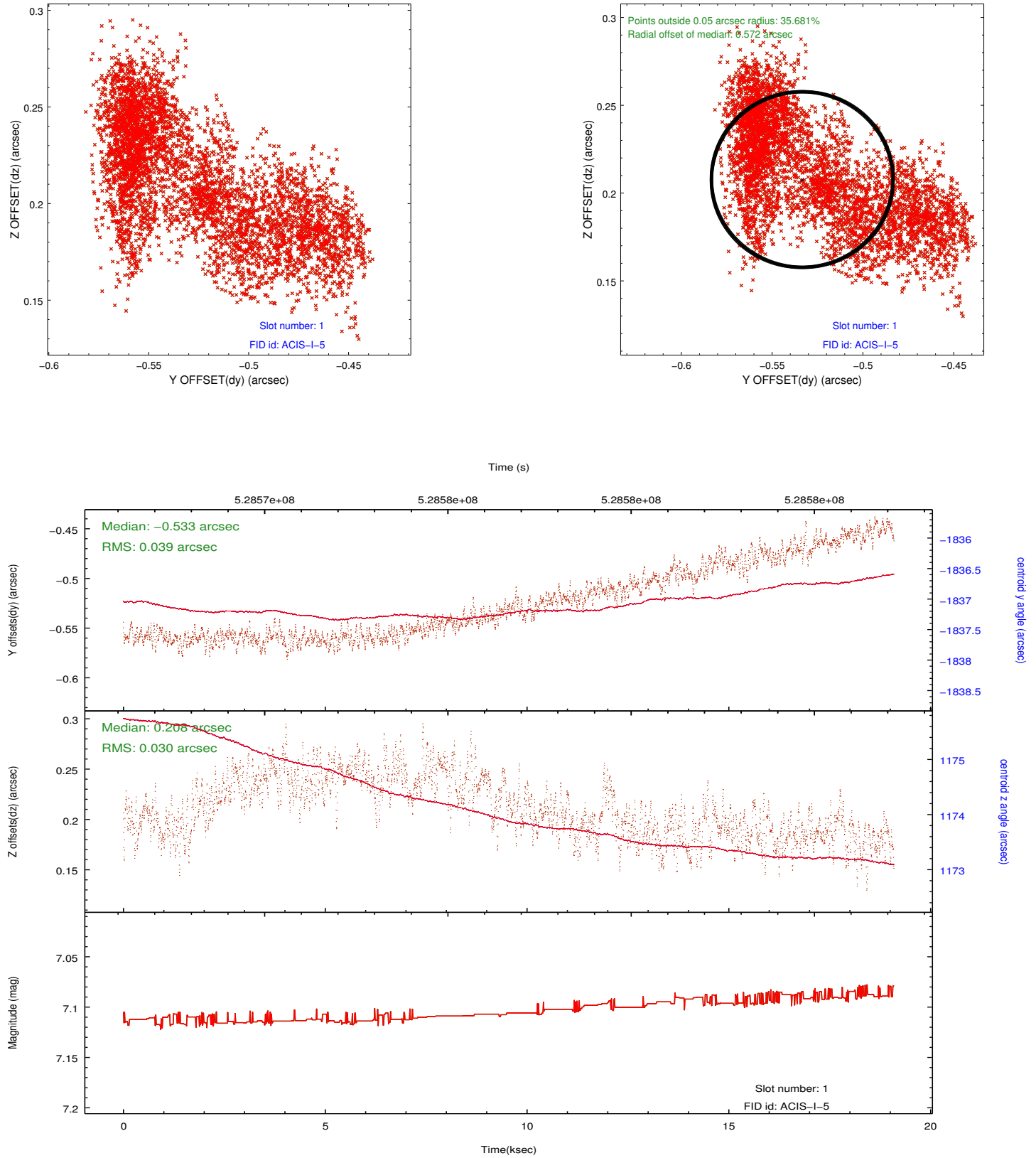


2.5 FID Slots

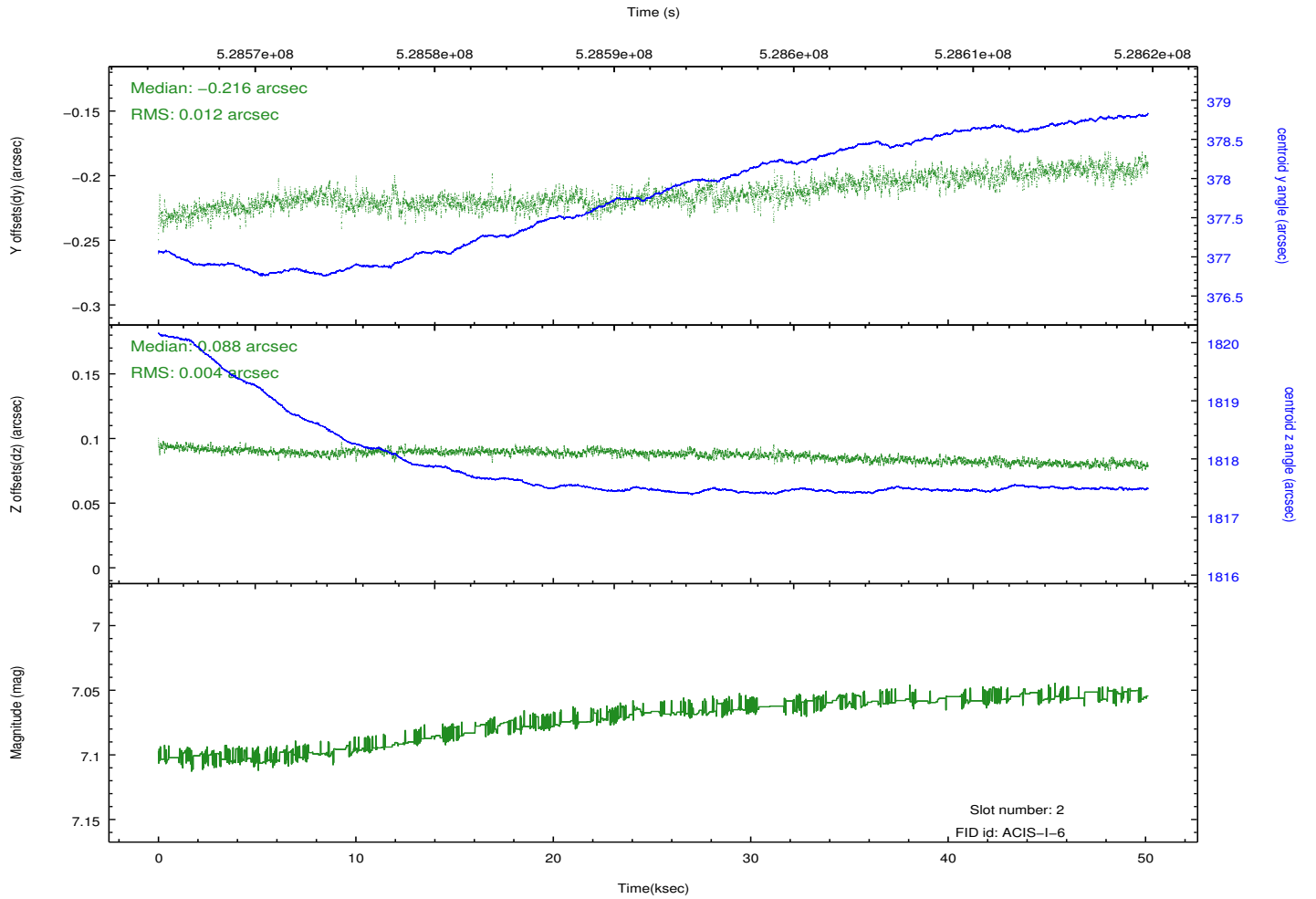
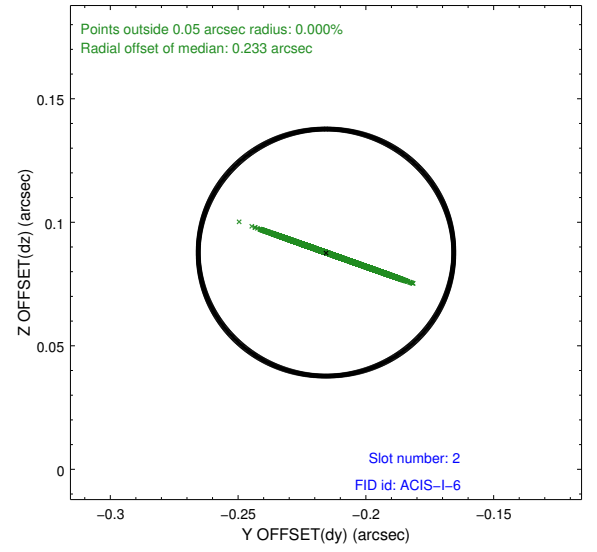
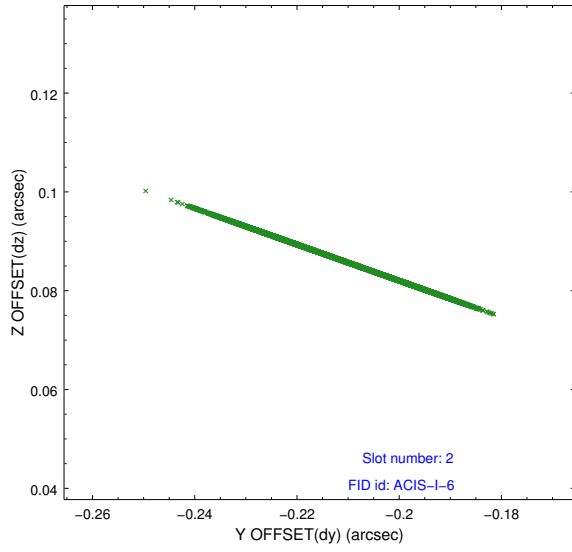
2.5.1 Slot 0



2.5.2 Slot 1



2.5.3 Slot 2



A Summary

A.1 Status

V&V Scientist	Joy Nichols
V&V Date (YYYY-MM-DD)	2014.10.04
V&V Edition	1
V&V Disposition and Status	OK
V&V Charge Time	50.080459394813

A.2 Comments

The slot 1 fid radial offset of 0.572 arcsec is acceptable, as this fid was not used in the aspect solution. The fid itself was lost 20ks in to the observation. Reprocessing will not improve the aspect solution. The observation has no GTI after the loss of the fid light.

It looks like the fid was lost due to an event on the Aspect Camera CCD likely caused by ionizing radiation.