

# V&V Reference Report

## L2 ASCDS Version : 10.2.4

Observation 17421 - L2 Version 1  
Chandra X-Ray Center

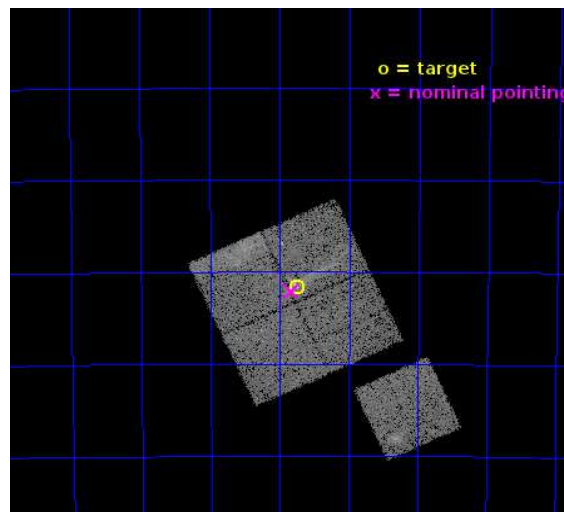
L2 Processing Date : Oct 3 2014

## Contents

<b>1</b>	<b>Front</b>	<b>2</b>
<b>2</b>	<b>OBI</b>	<b>3</b>
2.1	OBI . . . . .	3
2.1.1	Images . . . . .	3
2.1.2	Bias . . . . .	3
2.1.3	Parameters . . . . .	4
2.1.4	Events . . . . .	4
2.2	Compared Parameters . . . . .	5
2.3	Aspect . . . . .	6
2.4	Star Slots . . . . .	9
2.4.1	Slot 3 . . . . .	9
2.4.2	Slot 4 . . . . .	10
2.4.3	Slot 5 . . . . .	11
2.4.4	Slot 6 . . . . .	12
2.4.5	Slot 7 . . . . .	13
2.5	FID Slots . . . . .	14
2.5.1	Slot 0 . . . . .	14
2.5.2	Slot 1 . . . . .	15
2.5.3	Slot 2 . . . . .	16
<b>A</b>	<b>Summary</b>	<b>17</b>
A.1	Status . . . . .	17
A.2	Comments . . . . .	17

# 1 Front

seq_num	502240	Sequence number
obs_id	17421	Observation id
title	DEEP STUDY OF THE 20PC-LONG PRECESSING JET IN IGR J11014-6103	Prop
observer	Dr Lucia Pavan	Principal investigator
object	IGR J11014-6103	Source name
dtcycle	0	&#160
cycle	P	events from which exps? Prim/Second/Both
ra_targ	165.4375	Observer's specified target RA [deg]
dec_targ	-61.027667	Observer's specified target Dec [deg]
ra_nom	165.45816561489	Nominal RA [deg]
dec_nom	-61.035079267192	Nominal Dec [deg]
roll_nom	155.22675402771	Nominal Roll [deg]
revision	1	Processing version of data
ontime	20086.459401488	Sum of GTIs [s]
livetime	19824.015021972	Livetime [s]
ontime0	20086.459401488	Sum of GTIs [s]
ontime1	20083.359451234	Sum of GTIs [s]
ontime2	20083.4005211	Sum of GTIs [s]
ontime3	20086.582521498	Sum of GTIs [s]
ontime6	20086.418361485	Sum of GTIs [s]
l2events	60129	Number of level 2 events

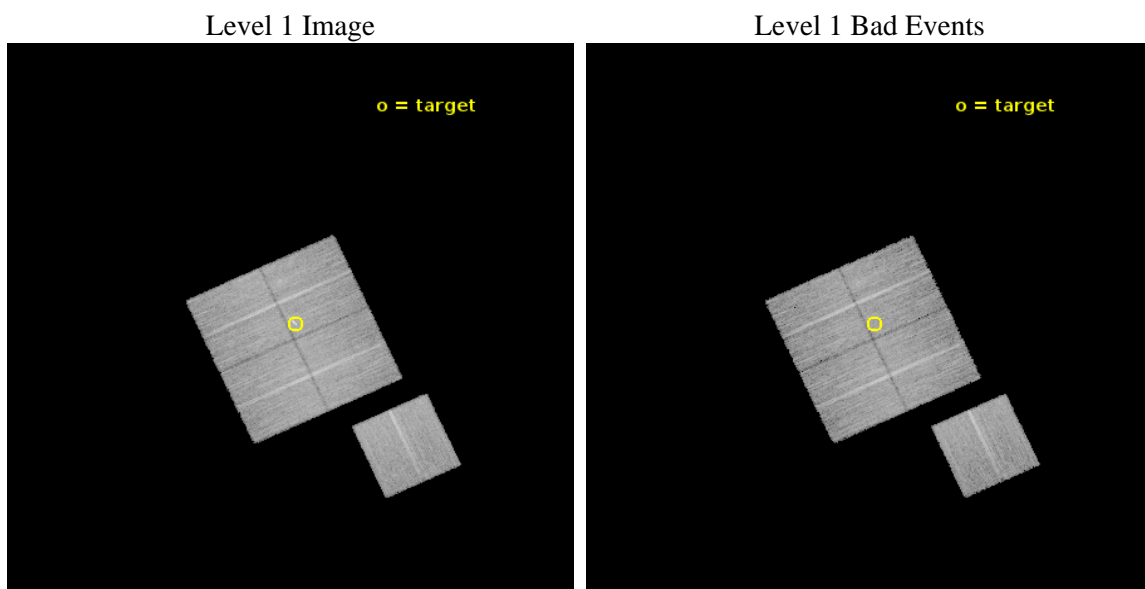




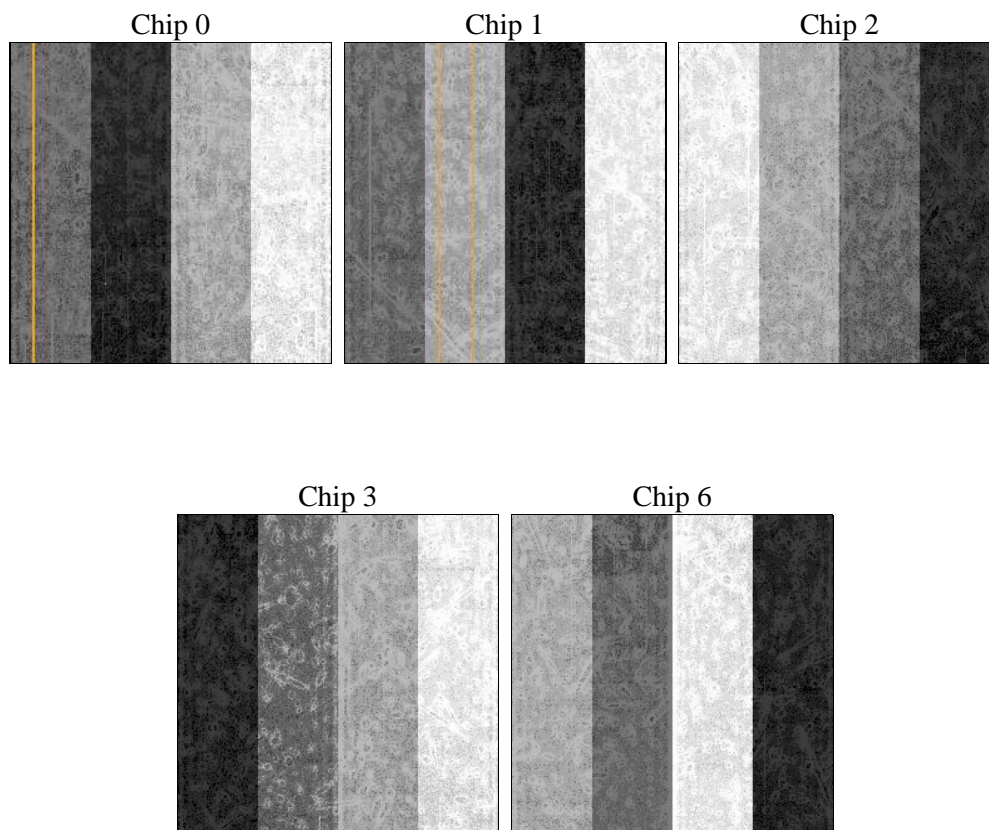
## 2 OBI

### 2.1 OBI

#### 2.1.1 Images



#### 2.1.2 Bias



### 2.1.3 Parameters

obi_num	0	Obi number	sched_exp_time	20000.000000	[s] Scheduled observation exposure time
ascdsver	10.2.4	Processing system revision	ontime	20086.459401488	Sum of GTIs [s]
caldsver	4.6.3	&#160	ontime0	20086.459401488	Sum of GTIs [s]
date	2014-10-03T04:14:21	Date and time of file creation	ontime1	20083.359451234	Sum of GTIs [s]
revision	1	Processing version of data	ontime2	20083.4005211	Sum of GTIs [s]
			ontime3	20086.582521498	Sum of GTIs [s]
			ontime6	20086.418361485	Sum of GTIs [s]
			l1events	490485	Number of level 1 events

### 2.1.4 Events

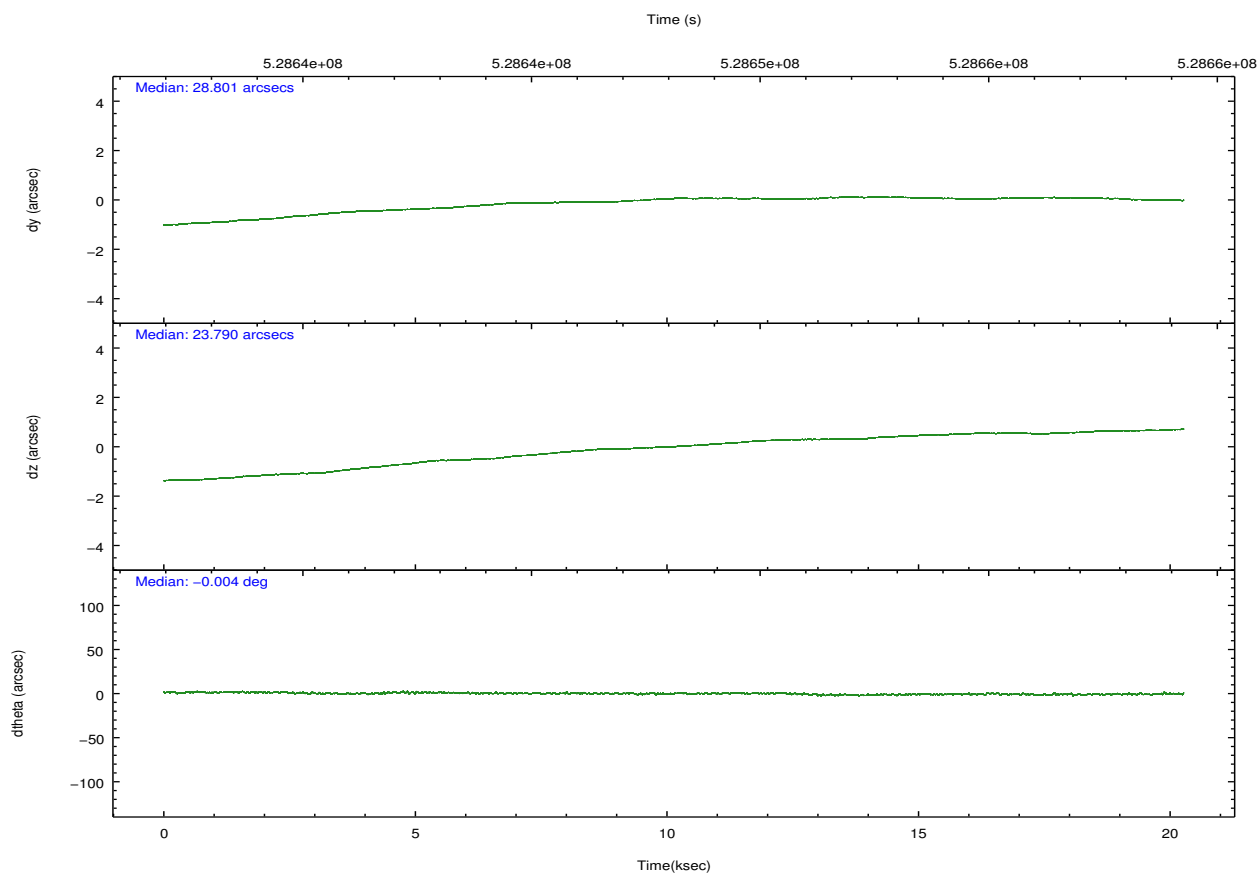
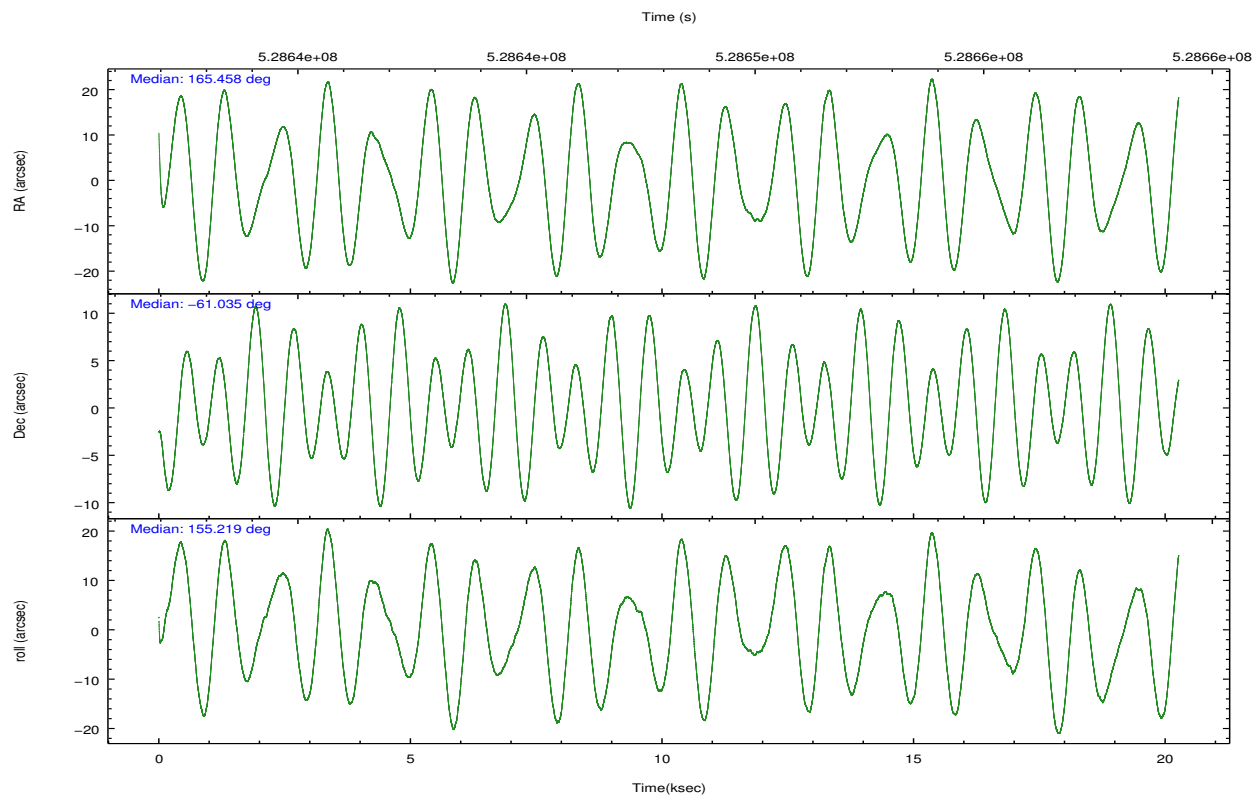
	ccd 0	ccd 1	ccd 2	ccd 3	ccd 6
level 1 events	97335	97542	97568	99385	98655
rejected events	81312	81284	85129	86908	85913
rejected %	83%	83%	87%	87%	87%

	ccd 0	ccd 1	ccd 2	ccd 3	ccd 6
grade 0 events	7396	7096	4811	5086	4835
	7%	7%	4%	5%	4%
grade 1 events	59	67	60	66	45
	0%	0%	0%	0%	0%
grade 2 events	3450	3473	2907	2625	2707
	3%	3%	2%	2%	2%
grade 3 events	1285	1331	1193	1172	1261
	1%	1%	1%	1%	1%
grade 4 events	1228	1428	1162	1193	1188
	1%	1%	1%	1%	1%
grade 5 events	4596	4904	4384	5193	4953
	4%	5%	4%	5%	5%
grade 6 events	2666	2933	2368	2402	2753
	2%	3%	2%	2%	2%
grade 7 events	76655	76310	80683	81648	80913
	78%	78%	82%	82%	82%

## 2.2 Compared Parameters

Parameter	Planned	Actual	Parameter	Planned	Actual
Instrument	ACIS	ACIS	Obspar format version number	7	7
Detector	ACIS-01236	ACIS-01236	Obspar file type	PREDICTED	ACTUAL
Grating	NONE	NONE	Obspar update status	NONE	UPDATED
Data mode	VFAINT	VFAINT	CCD I0 on	Y	Y
Observation mode	POINTING	POINTING	CCD I1 on	Y	Y
[deg] Pointing RA	165.514903	165.4581656148945	CCD I2 on	Y	Y
[deg] Pointing Dec	-61.032433	-61.03507926719155	CCD I3 on	Y	Y
[deg] Pointing Roll	155.067714	155.2267540277084	CCD S0 on	N	N
[mm] SIM focus pos	-0.782348	-0.7809083437167272	CCD S1 on	N	N
[mm] SIM defocus	0	0.001439871863259334	CCD S2 on	O1	Y
[mm] SIM translation stage pos	-239.592463	-239.5815621397477	CCD S3 on	N	N
[mm] SIM translation stage offset	6	5.98910913681803	CCD S4 on	N	N
[s] Observation start time (MET)	528638255.184000	528637271.16669	CCD S5 on	N	N
Observation start date	2014-10-02T11:56:28	2014-10-02T11:41:11	Number of optional ACIS chips dropped	0	0
[s] Observation end time (MET)	528658255.184000	528659104.6929	On-chip summing requested	N	N
Observation end date	2014-10-02T17:29:48	2014-10-02T17:45:04	Subarray requested	NONE	NONE
Read mode	TIMED	TIMED	Alternating exposures requested	N	N
			[s] Primary exposure time	0.000000	3.1

## 2.3 Aspect

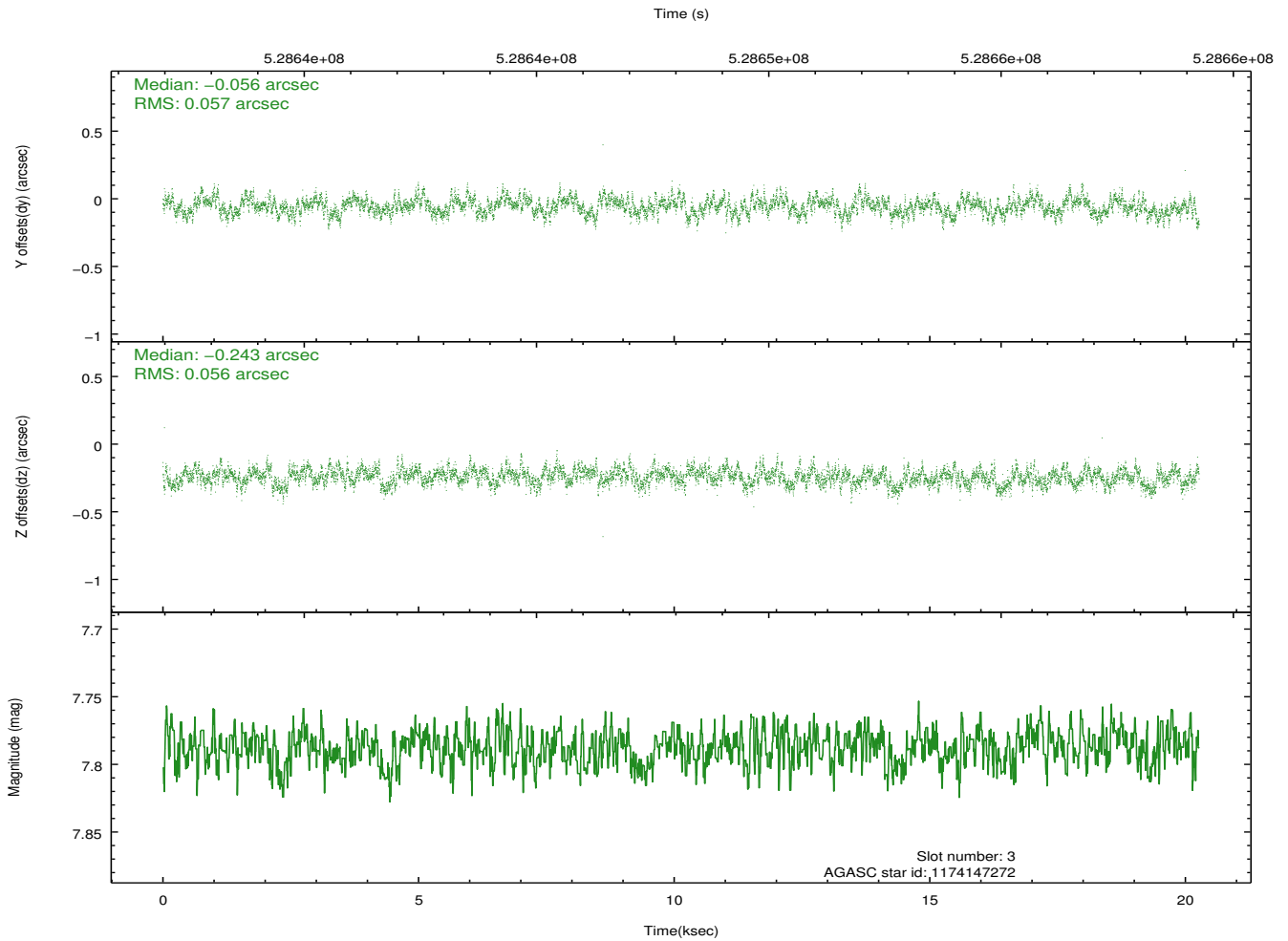
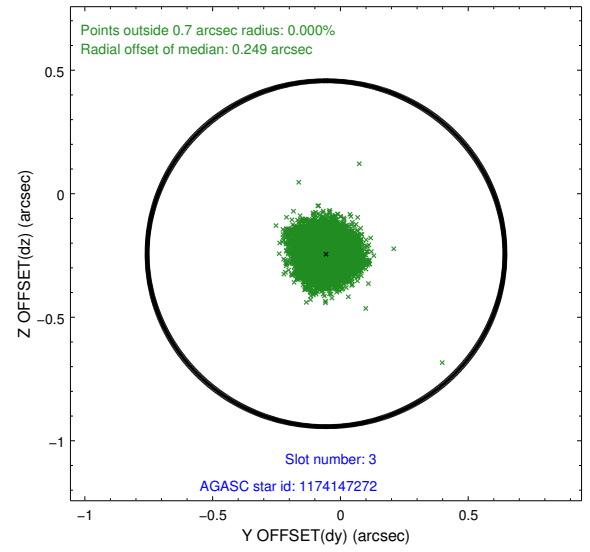
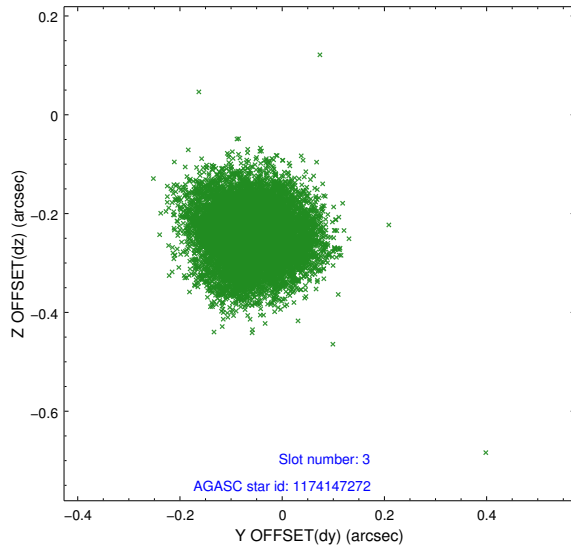


### Slot Statistics

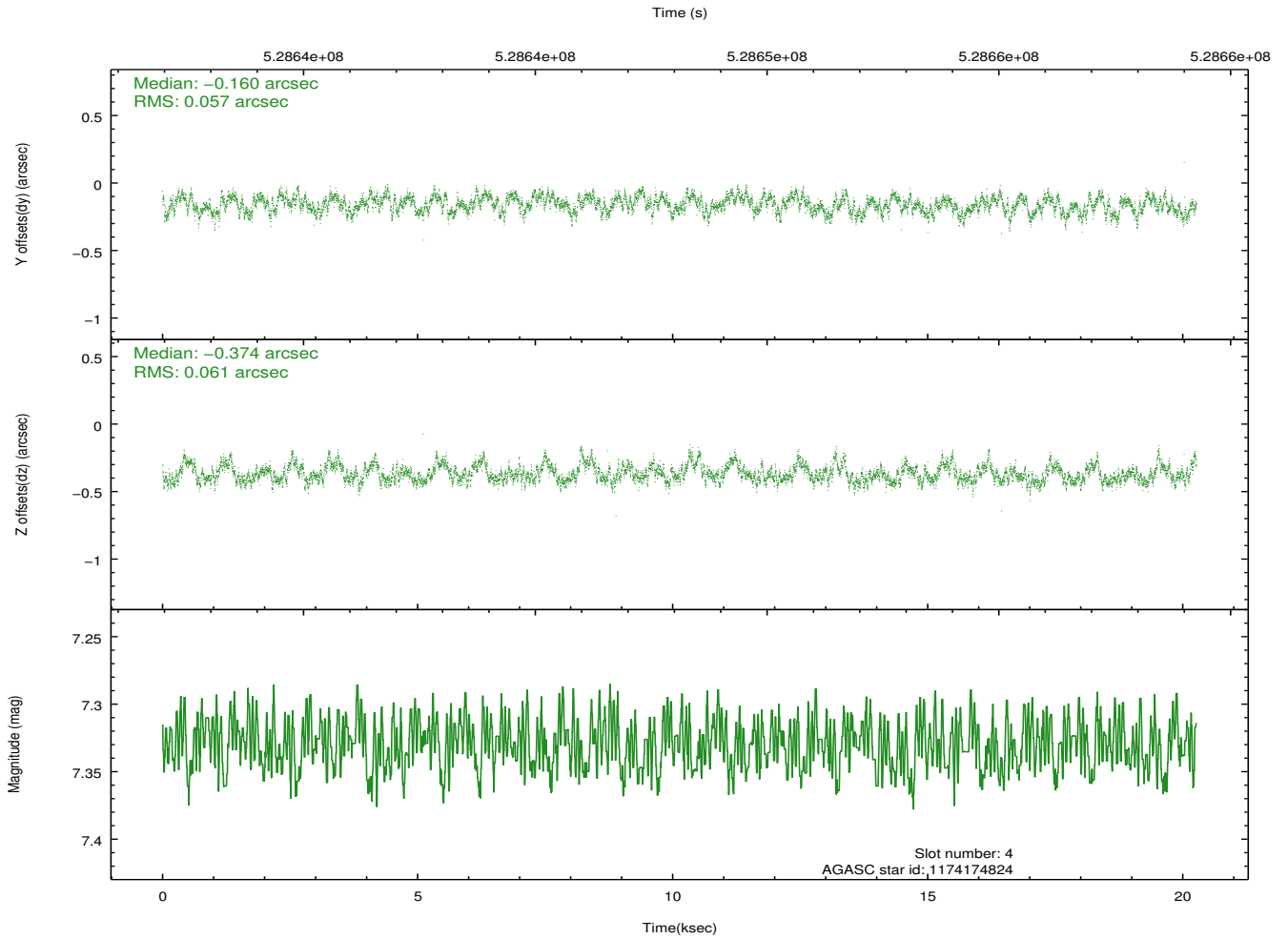
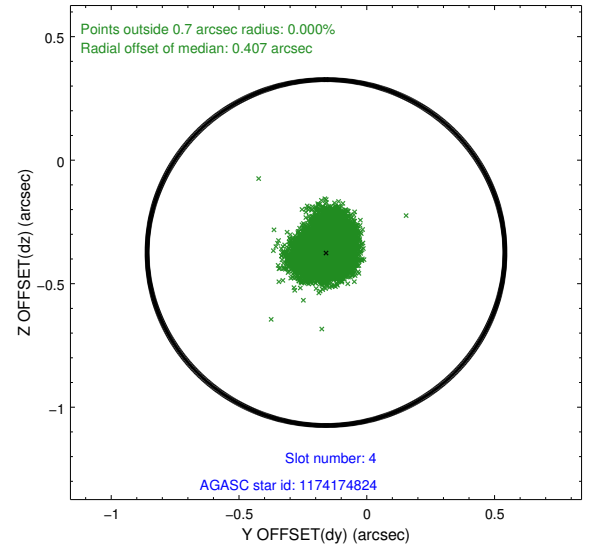
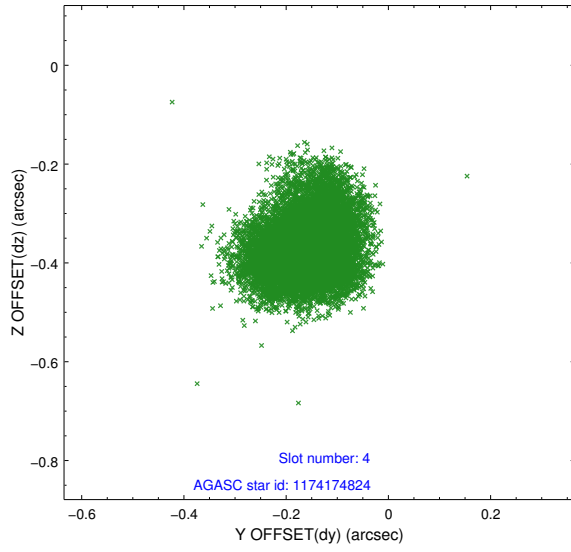
slot	status	id	mag	n_pts	med_dy	med_dz	dr1	dr2	ra	dec	mean_y	mean_z
0	FID	ACIS-I-4	7.07	4944	0.334	0.007	0.015	0.026	0.000000	0.000000	2131.17	1174.85
1	FID	ACIS-I-5	7.07	4944	-0.400	0.016	0.010	0.015	0.000000	0.000000	-1837.63	1173.42
2	FID	ACIS-I-6	7.06	4944	-0.034	0.043	0.013	0.025	0.000000	0.000000	375.82	1817.83
3	GUIDE	1174147272	7.79	9887	-0.056	-0.243	0.087	0.136	165.413771	-61.562087	-646.65	1802.03
4	GUIDE	1174174824	7.33	9887	-0.160	-0.374	0.089	0.141	164.692322	-60.862830	1561.08	62.45
5	GUIDE	1174178176	8.06	9885	0.123	0.133	0.103	0.177	165.154949	-60.304034	1687.71	-2105.23
6	GUIDE	1174156832	7.06	9888	-0.226	-0.025	0.075	0.124	166.121036	-61.488309	-1638.08	1053.47
7	GUIDE	1174278696	8.71	9883	0.313	0.498	0.110	0.175	167.215683	-60.759417	-2313.23	-2116.43

## 2.4 Star Slots

### 2.4.1 Slot 3

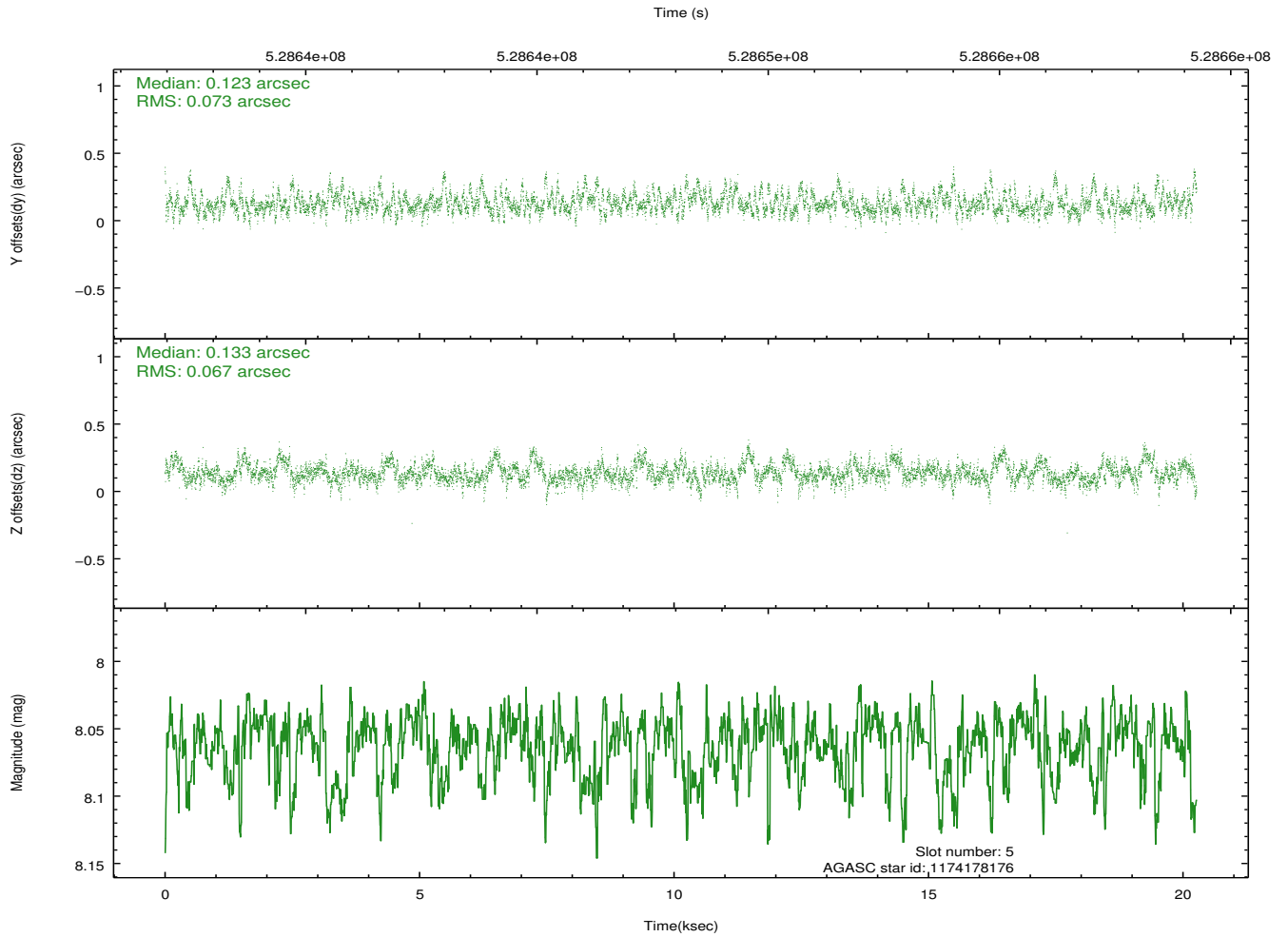
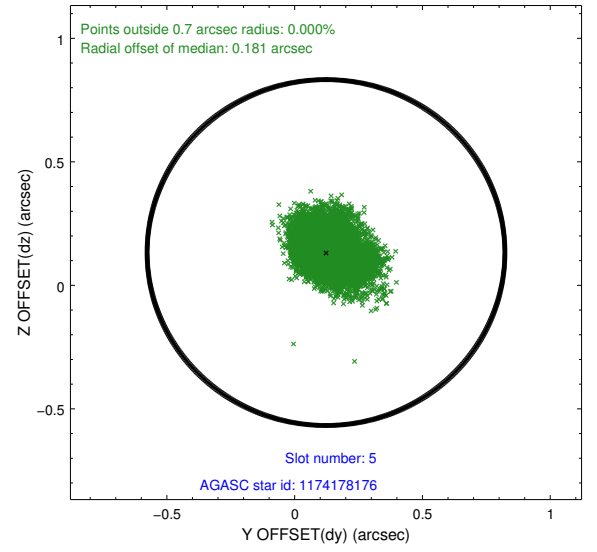
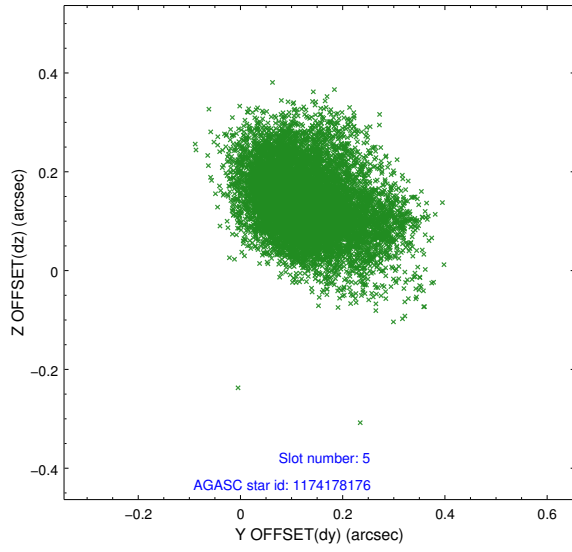


## 2.4.2 Slot 4

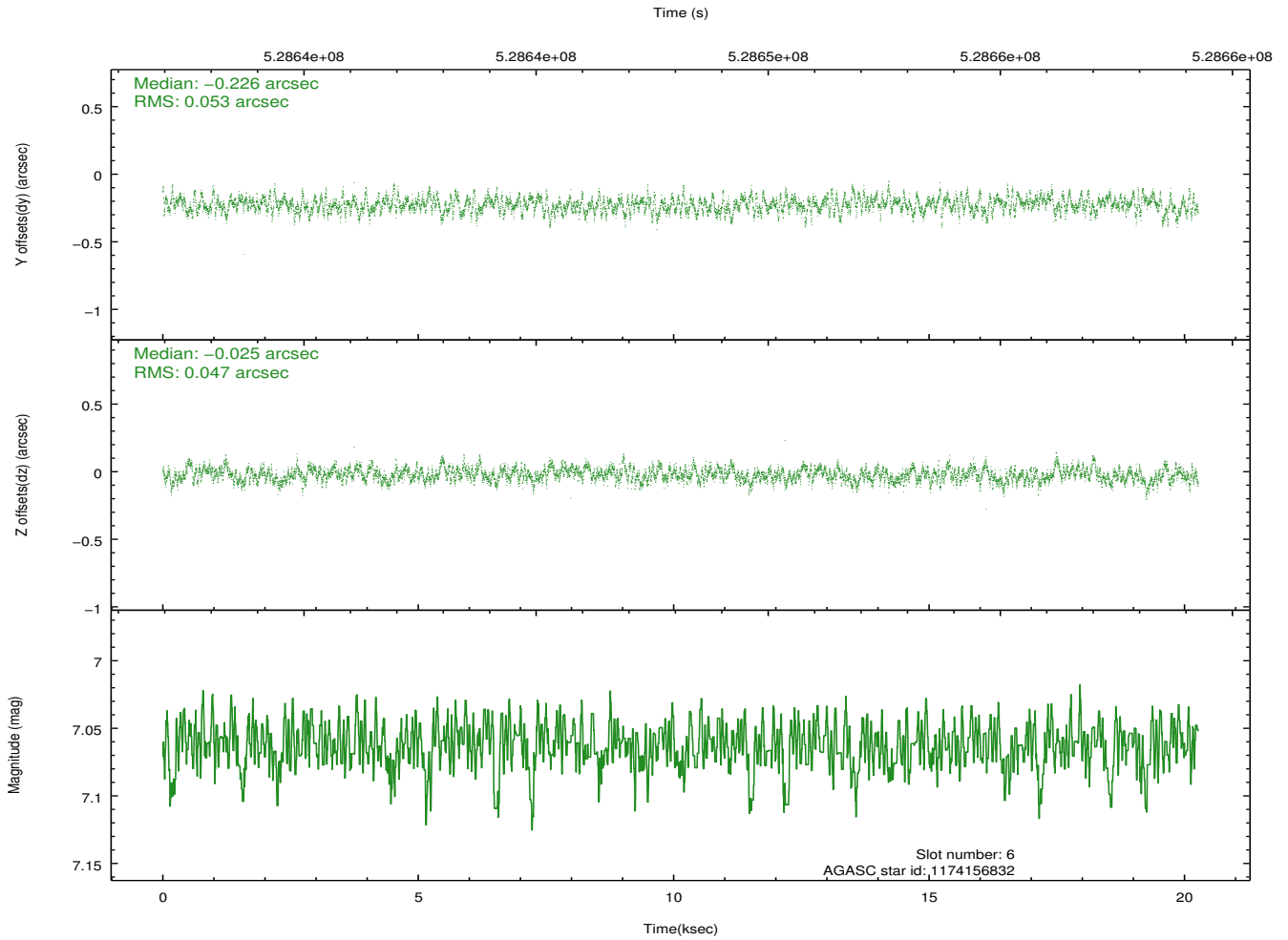
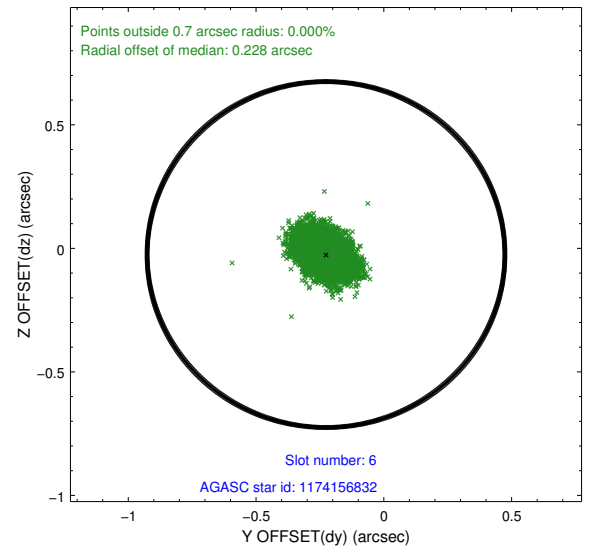
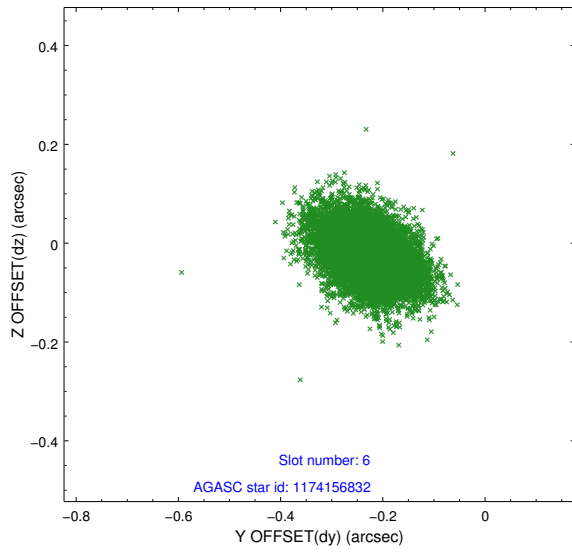




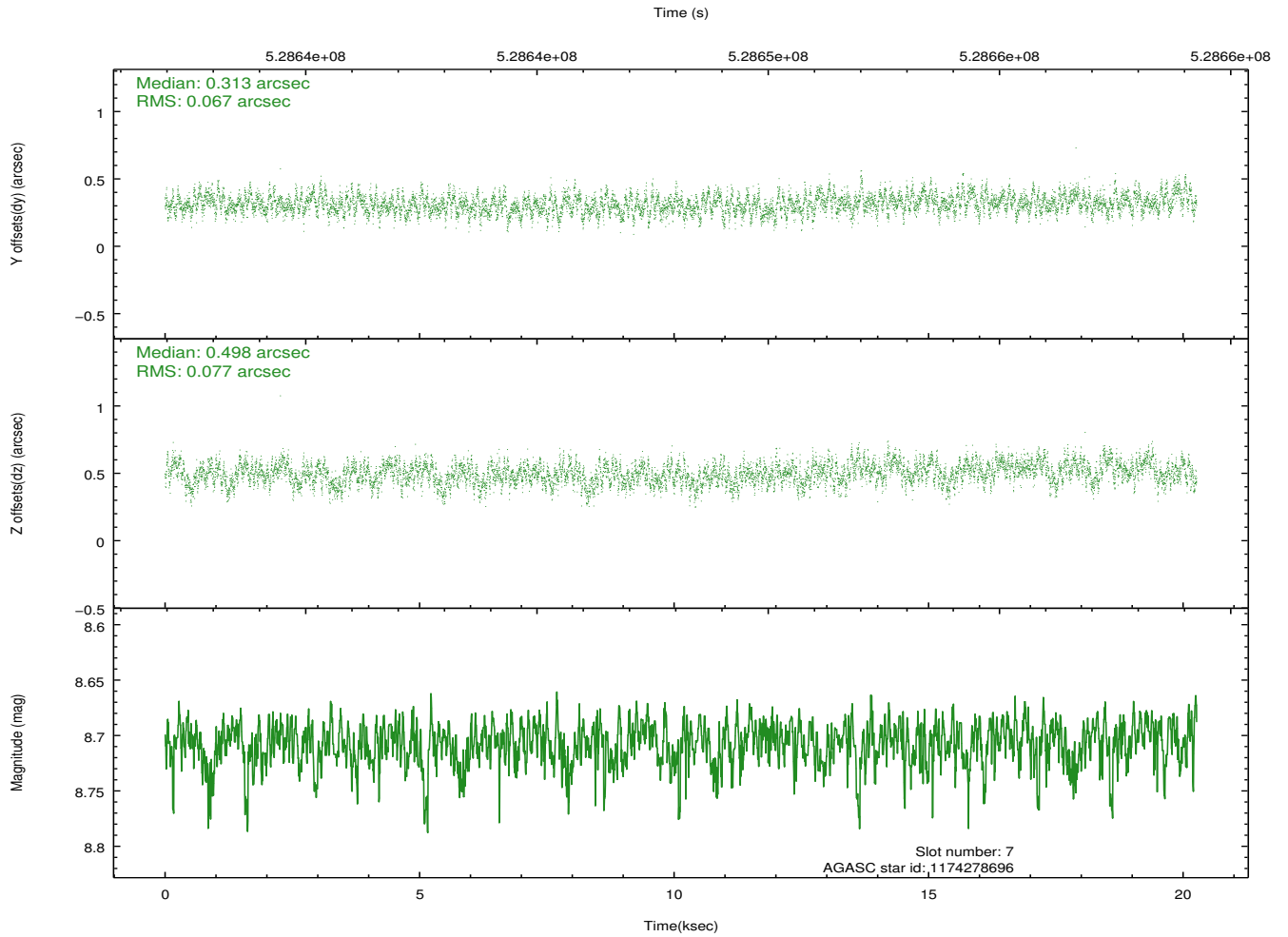
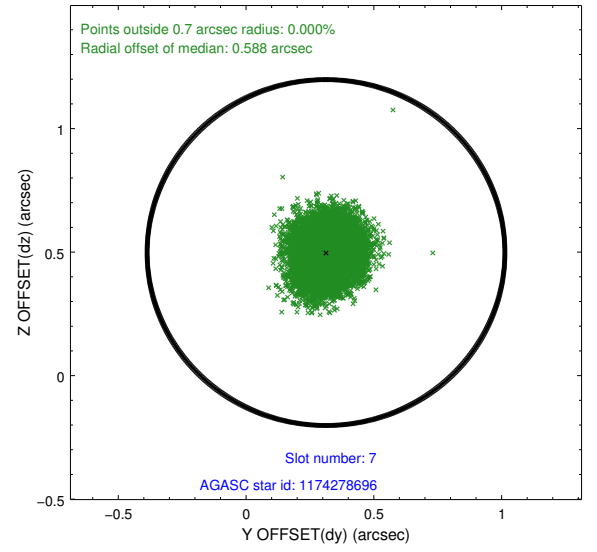
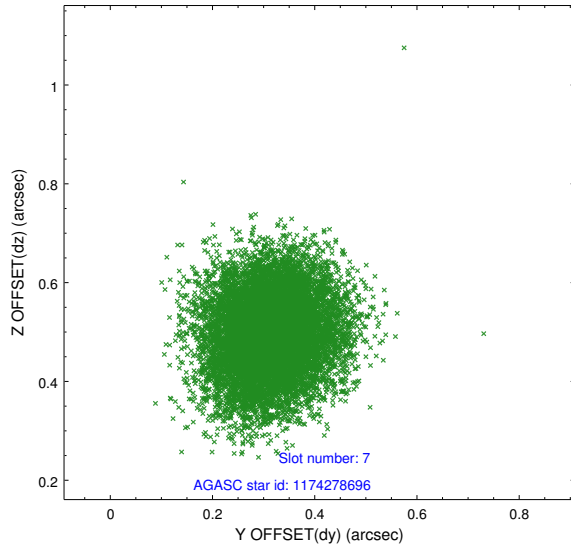
### 2.4.3 Slot 5



## 2.4.4 Slot 6

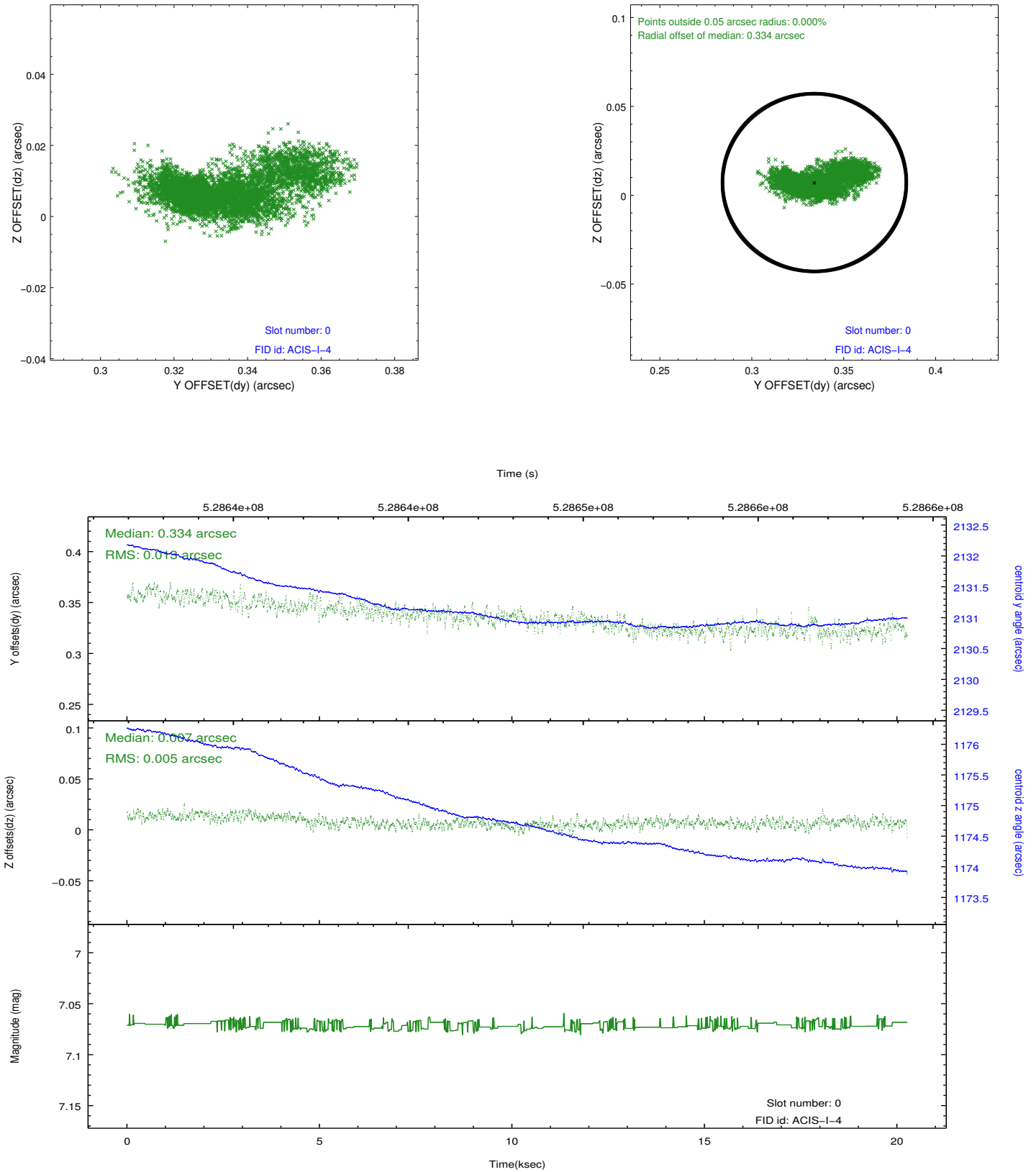


## 2.4.5 Slot 7

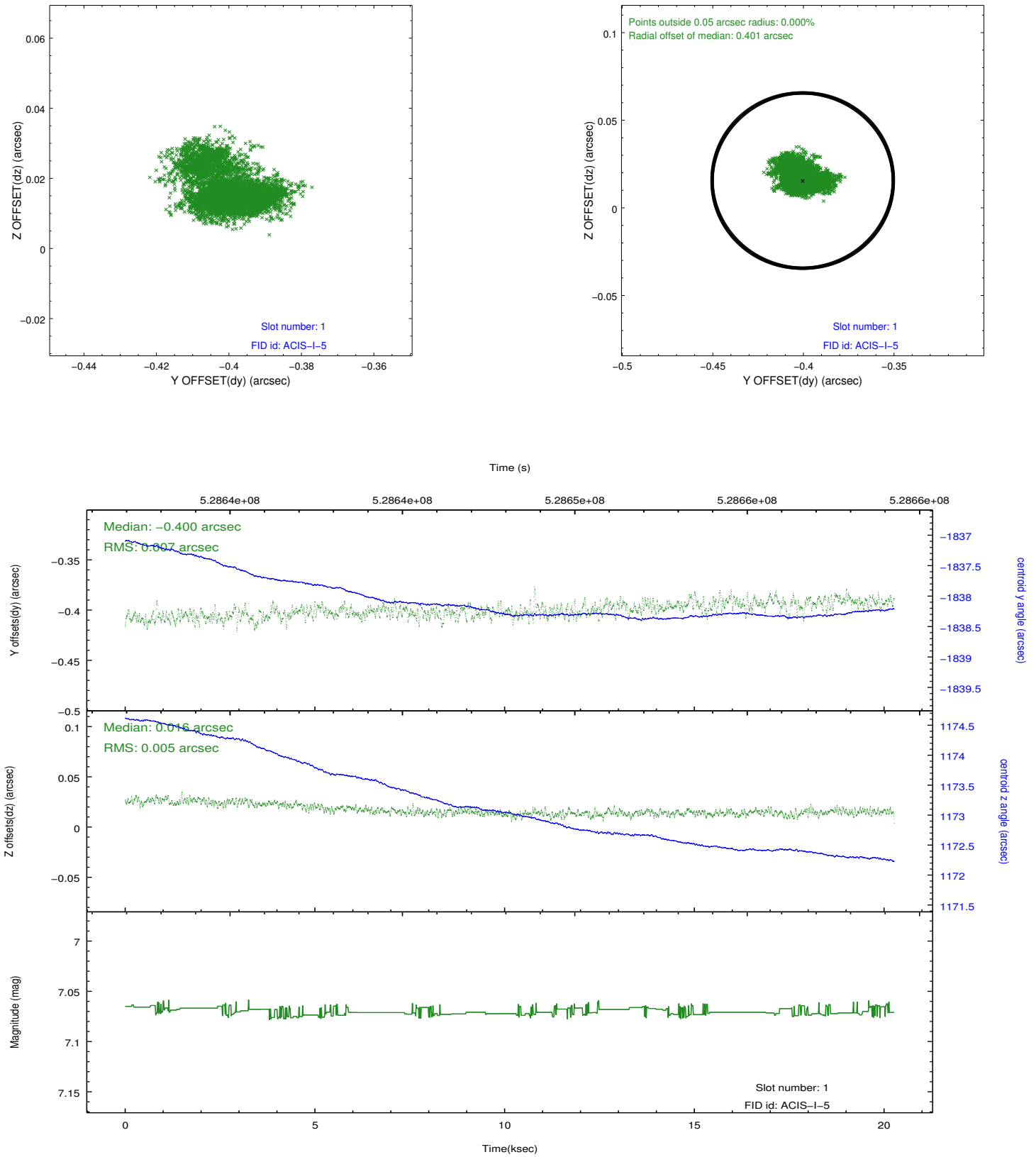


## 2.5 FID Slots

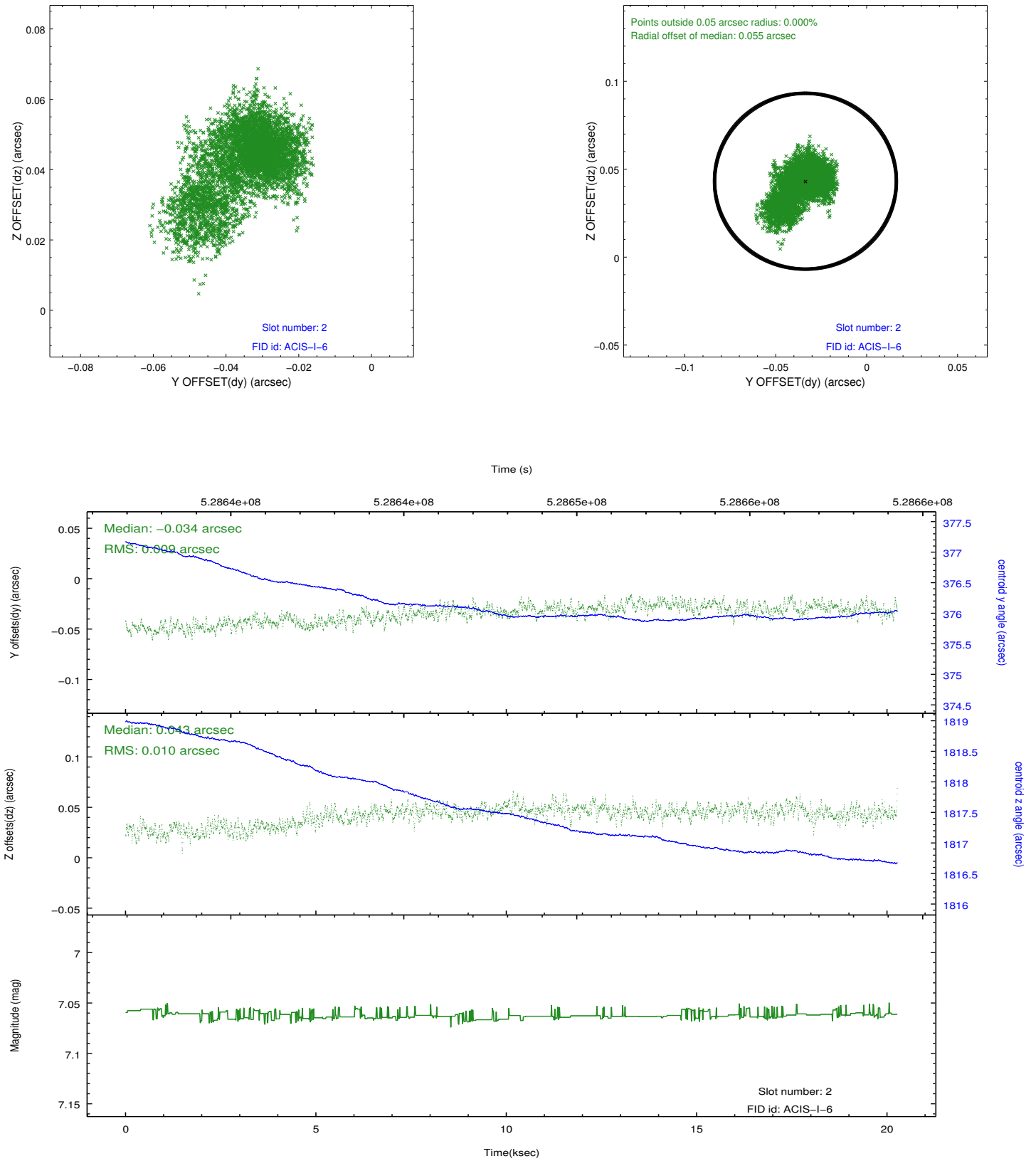
### 2.5.1 Slot 0



## 2.5.2 Slot 1



### 2.5.3 Slot 2



## A Summary

### A.1 Status

V&V Scientist	Joy Nichols
V&V Date (YYYY-MM-DD)	2014.10.04
V&V Edition	1
V&V Disposition and Status	OK
V&V Charge Time	20.086459401488

### A.2 Comments

The fid slot 1 radial offset of 0.401 arcsec is acceptable.