

V&V Reference Report

L2 ASCDS Version : 10.2.1

Observation 15979 - L2 Version 2
Chandra X-Ray Center

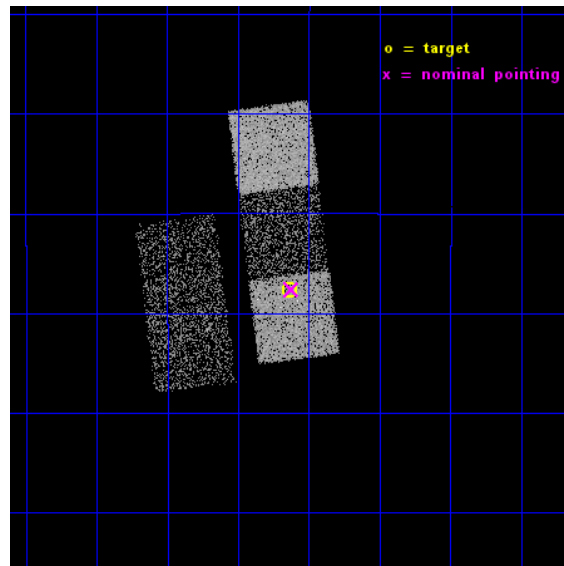
L2 Processing Date : Dec 10 2014

Contents

1	Front	2
2	OBI	3
2.1	OBI	3
2.1.1	Images	3
2.1.2	Bias	3
2.1.3	Parameters	4
2.1.4	Events	4
2.2	Compared Parameters	5
2.3	Aspect	6
2.4	Star Slots	9
2.4.1	Slot 3	9
2.4.2	Slot 4	10
2.4.3	Slot 5	11
2.4.4	Slot 6	12
2.4.5	Slot 7	13
2.5	FID Slots	14
2.5.1	Slot 0	14
2.5.2	Slot 1	15
2.5.3	Slot 2	16
A	Summary	17
A.1	Status	17
A.2	Comments	17

1 Front

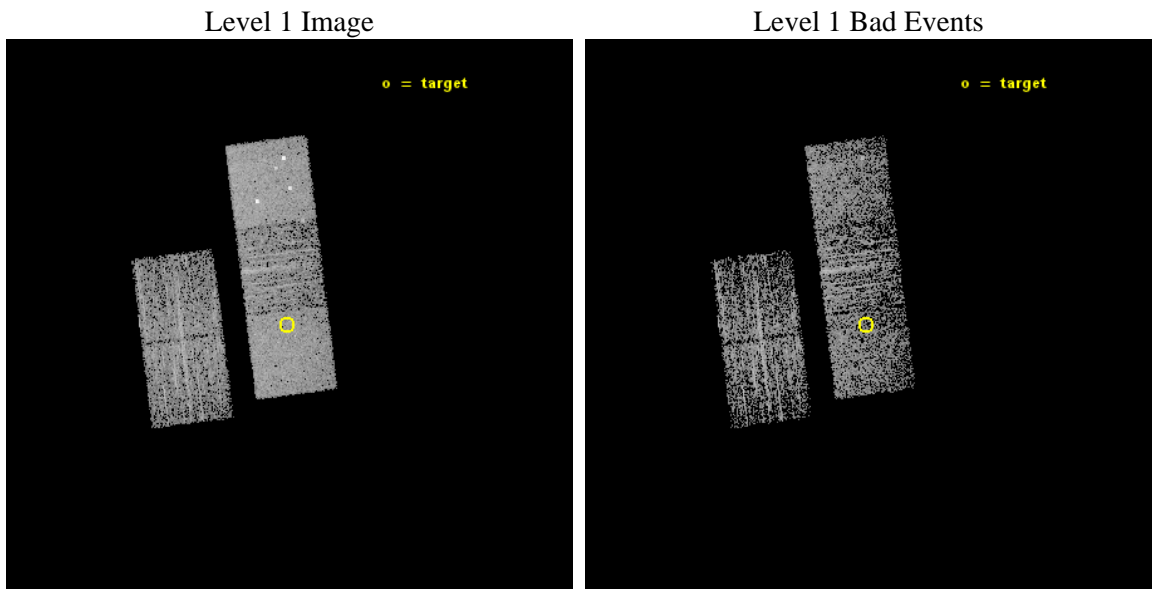
seq_num	502212	Sequence number
obs_id	15979	Observation id
title	Where Have All The Central Compact Objects Gone?	Proposal title
observer	Dr. Eric Gotthelf	Principal investigator
object	PSR J1807-0847	Source name
dtcycle	0	
cycle	P	events from which exps? Prim/Second/Both
ra_targ	271.908333	Observer's specified target RA [deg]
dec_targ	-8.795333	Observer's specified target Dec [deg]
ra_nom	271.90593737114	Nominal RA [deg]
dec_nom	-8.793534468203	Nominal Dec [deg]
roll_nom	82.758310136971	Nominal Roll [deg]
revision	2	Processing version of data
ontime	3567.7006835341	Sum of GTIs [s]
livetime	3521.0860476007	Livetime [s]
ontime2	3567.5365235209	Sum of GTIs [s]
ontime3	3567.5775635242	Sum of GTIs [s]
ontime5	3567.6596435308	Sum of GTIs [s]
ontime6	3567.6186035275	Sum of GTIs [s]
ontime7	3567.7006835341	Sum of GTIs [s]
l2events	25886	Number of level 2 events



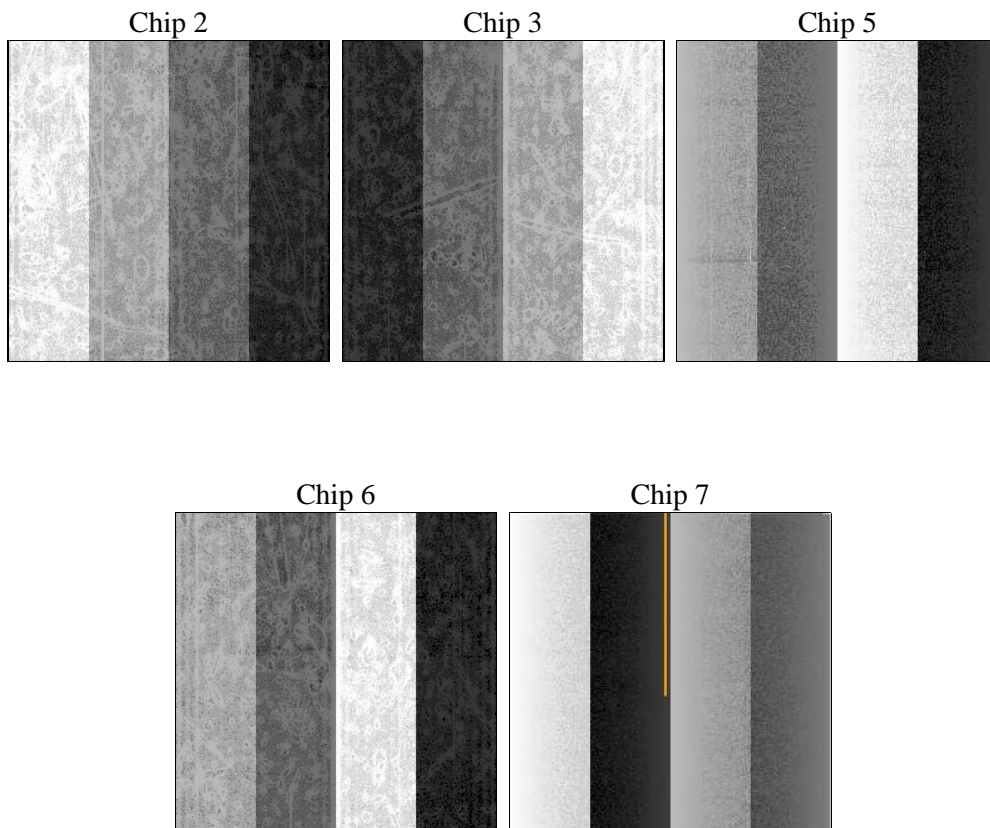
2 OBI

2.1 OBI

2.1.1 Images



2.1.2 Bias



2.1.3 Parameters

obi_num	0	Obi number	sched_exp_time	3500.000000	[s] Scheduled observation exposure time
ascdsver	10.3.1	Processing system revision	ontime	3567.7006835341	Sum of GTIs [s]
caldsver	4.6.4	 	ontime2	3567.5365235209	Sum of GTIs [s]
date	2014-12-10T10:10:56	Date and time of file creation	ontime3	3567.5775635242	Sum of GTIs [s]
revision	2	Processing version of data	ontime5	3567.6596435308	Sum of GTIs [s]
			ontime6	3567.6186035275	Sum of GTIs [s]
			ontime7	3567.7006835341	Sum of GTIs [s]
			l1events	96291	Number of level 1 events

2.1.4 Events

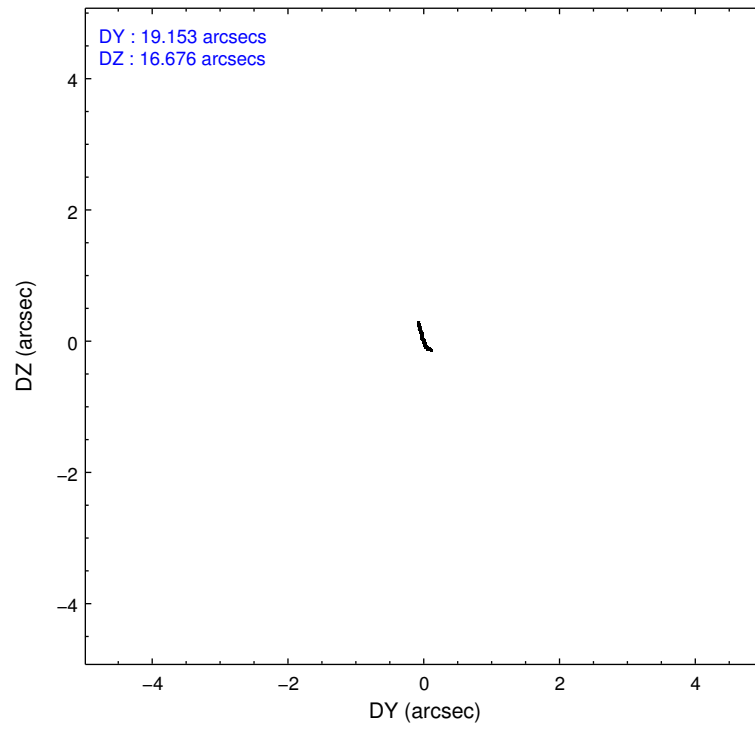
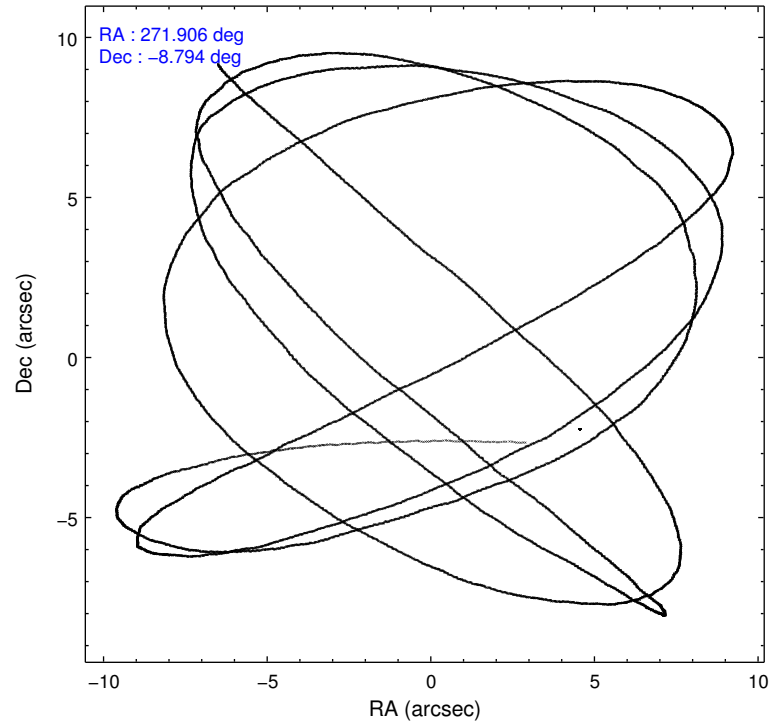
	ccd 2	ccd 3	ccd 5	ccd 6	ccd 7
level 1 events	14476	15233	29040	15670	21872
rejected events	12622	13471	13988	13757	12286
rejected %	87%	88%	48%	87%	56%

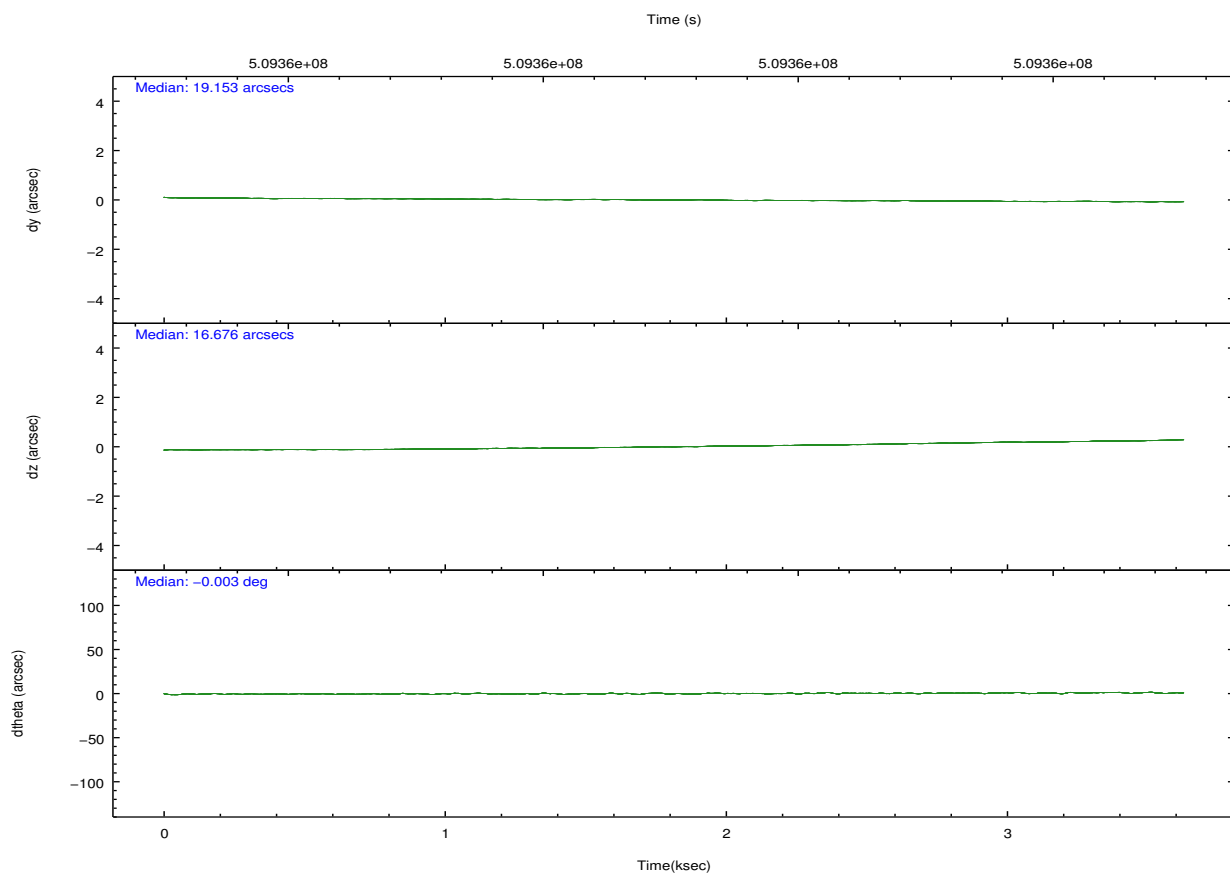
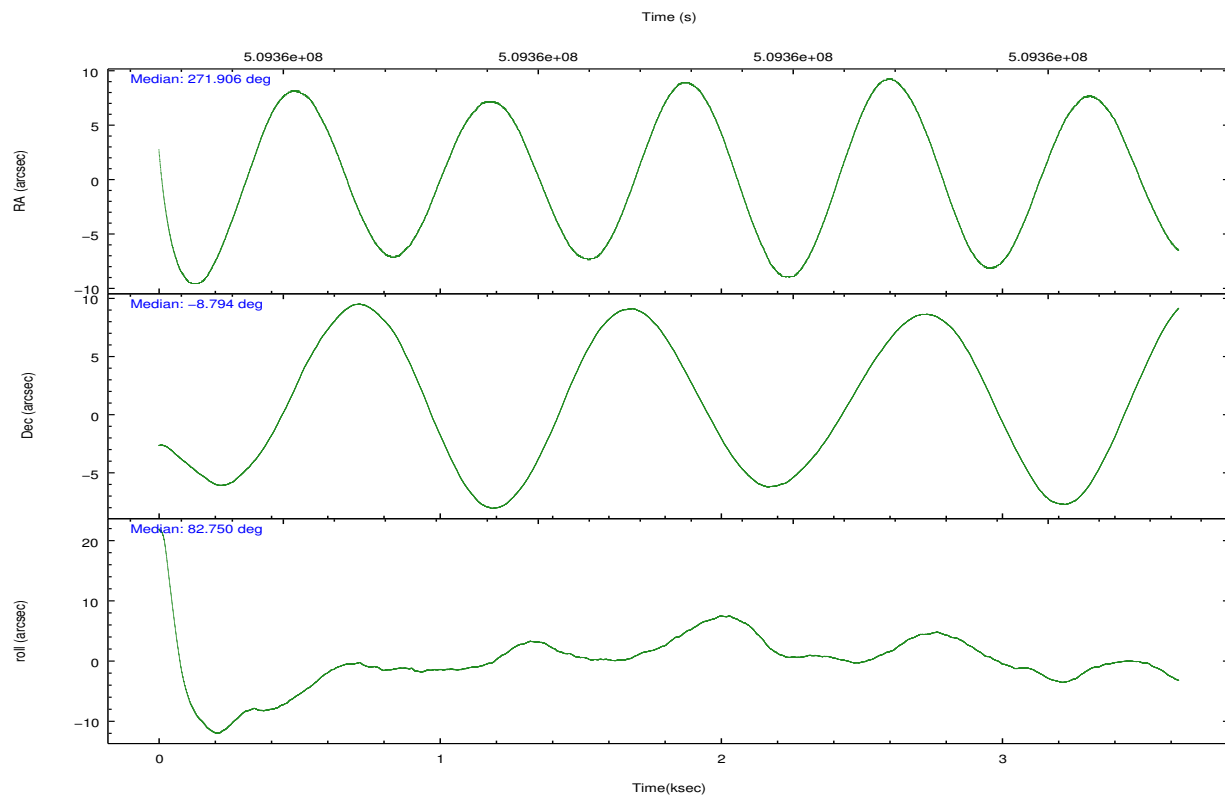
	ccd 2	ccd 3	ccd 5	ccd 6	ccd 7
grade 0 events	659	673	2799	643	885
	4%	4%	9%	4%	4%
grade 1 events	10	4	180	10	27
	0%	0%	0%	0%	0%
grade 2 events	467	389	4645	453	1975
	3%	2%	15%	2%	9%
grade 3 events	175	177	409	207	779
	1%	1%	1%	1%	3%
grade 4 events	198	170	397	156	758
	1%	1%	1%	0%	3%
grade 5 events	729	830	1783	844	2236
	5%	5%	6%	5%	10%
grade 6 events	357	356	6813	454	5194
	2%	2%	23%	2%	23%
grade 7 events	11881	12634	12014	12903	10018
	82%	82%	41%	82%	45%

2.2 Compared Parameters

Parameter	Planned	Actual	Parameter	Planned	Actual
Instrument	ACIS	ACIS	Obspar format version number	7	7
Detector	ACIS-23567	ACIS-23567	Obspar file type	PREDICTED	ACTUAL
Grating	NONE	NONE	Obspar update status	NONE	UPDATED
Data mode	VFAINT	VFAINT	CCD I0 on	N	N
Observation mode	POINTING	POINTING	CCD I1 on	N	N
[deg] Pointing RA	271.917023	271.9059373711381	CCD I2 on	O2	Y
[deg] Pointing Dec	-8.818465	-8.793534468203049	CCD I3 on	O3	Y
[deg] Pointing Roll	82.603272	82.7583101369712	CCD S0 on	N	N
[mm] SIM focus pos	-0.684267	-0.6828225247311905	CCD S1 on	O1	Y
[mm] SIM defocus	0	0.001444936568705701	CCD S2 on	O4	Y
[mm] SIM translation stage pos	-190.132523	-190.1425803651734	CCD S3 on	Y	Y
[mm] SIM translation stage offset	0	0.01005778216563158	CCD S4 on	N	N
[s] Observation start time (MET)	509360832.184000	509359668.70055	CCD S5 on	N	N
Observation start date	2014-02-21T09:06:05	2014-02-21T08:47:48	Number of optional ACIS chips dropped	0	0
[s] Observation end time (MET)	509364332.184000	509364868.01334	On-chip summing requested	N	N
Observation end date	2014-02-21T10:04:25	2014-02-21T10:14:28	Subarray requested	NONE	NONE
Read mode	TIMED	TIMED	Alternating exposures requested	N	N
			[s] Primary exposure time	0.000000	3.1

2.3 Aspect



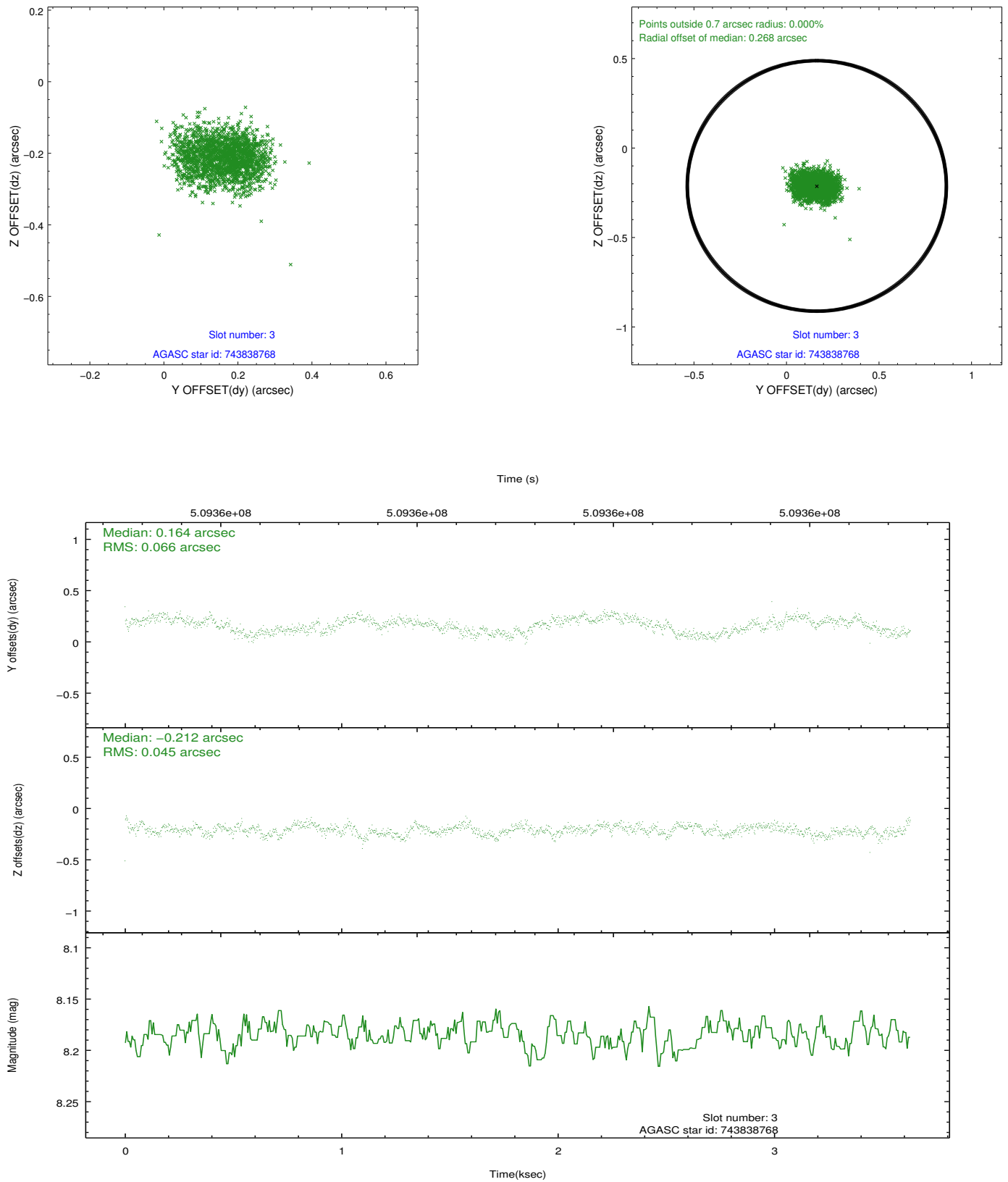


Slot Statistics

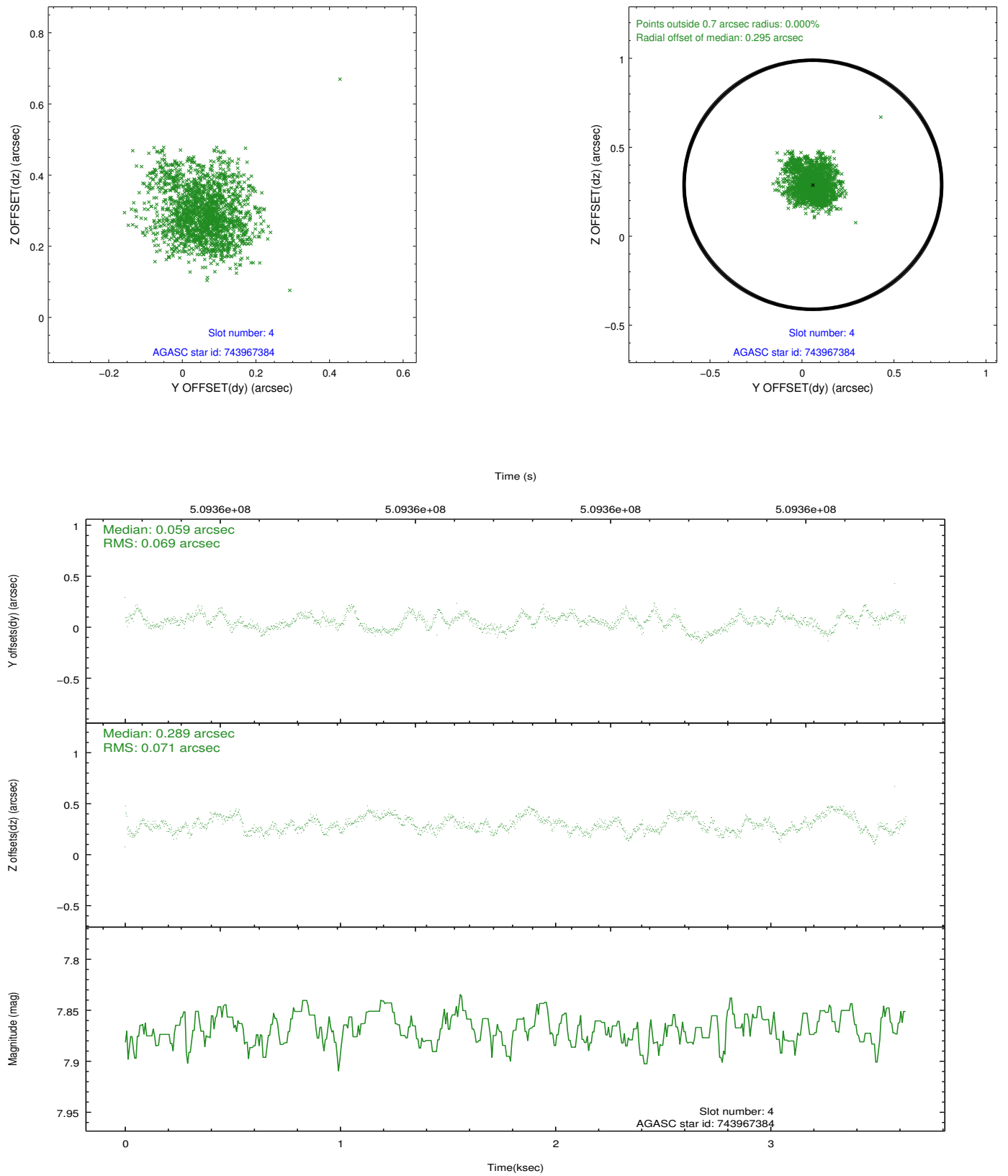
slot	status	used	id	mag	n_pts	med_dy	med_dz	dr1	dr2	ra	dec	mean_y	mean_z
0	FID		ACIS-S-2	7.04	885	-0.131	-0.039	0.009	0.014	0.000000	0.000000	-772.38	-1738.10
1	FID		ACIS-S-4	7.13	885	0.321	0.074	0.006	0.011	0.000000	0.000000	2140.56	168.66
2	FID		ACIS-S-5	7.16	885	-0.220	-0.026	0.008	0.014	0.000000	0.000000	-1823.08	164.25
3	GUIDE	used	743838768	8.19	1770	0.164	-0.212	0.086	0.132	271.434750	-9.262643	-1806.93	1493.14
4	GUIDE	used	743967384	7.87	1771	0.059	0.289	0.107	0.170	272.419530	-8.779336	365.96	-1752.65
5	GUIDE	used	743968040	9.51	1771	-0.221	-0.057	0.137	0.241	271.954769	-8.449175	1335.67	37.77
6	GUIDE	used	743835552	7.26	1771	-0.452	-0.412	0.087	0.134	271.506696	-8.108608	2347.40	1778.33
7	GUIDE	used	744493824	9.77	1768	0.453	0.385	0.170	0.264	272.277942	-9.447727	-2083.50	-1560.72

2.4 Star Slots

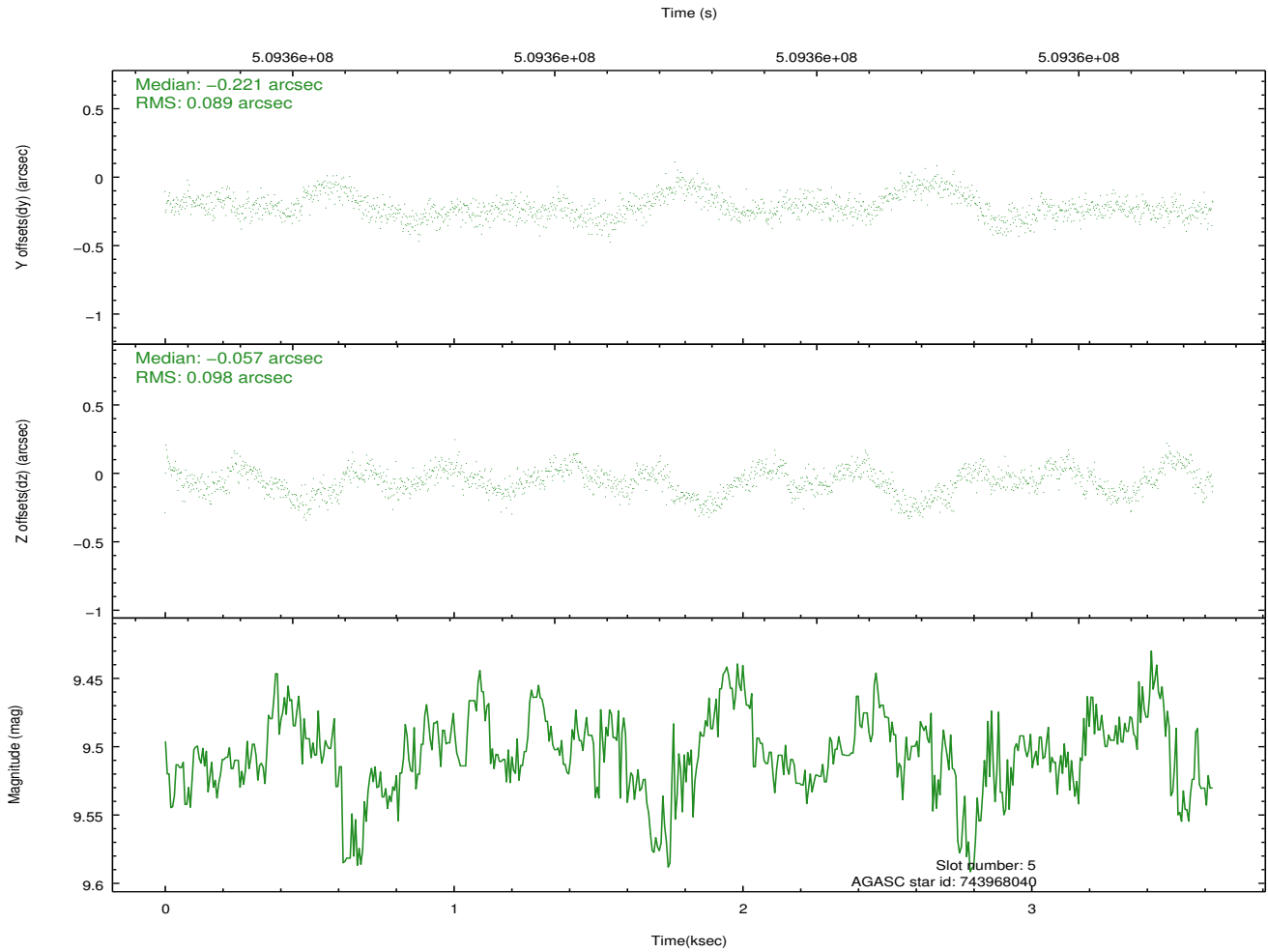
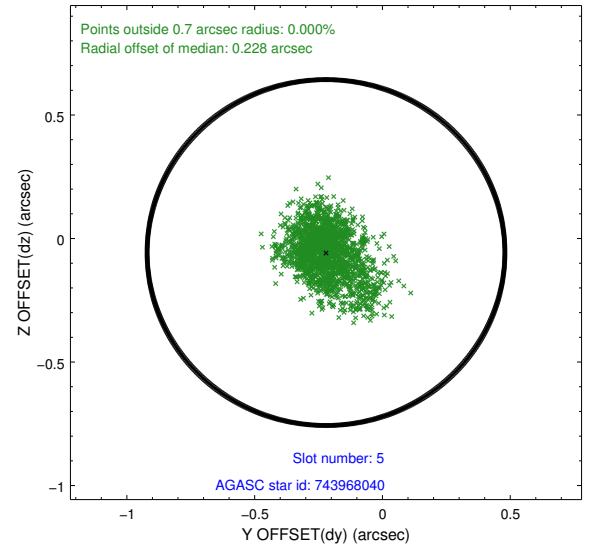
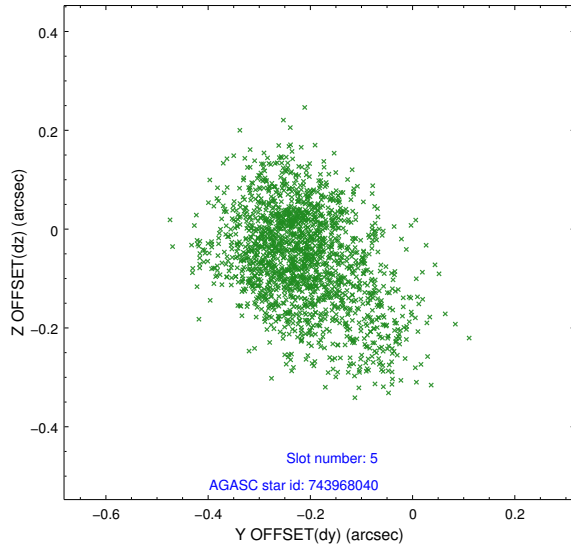
2.4.1 Slot 3



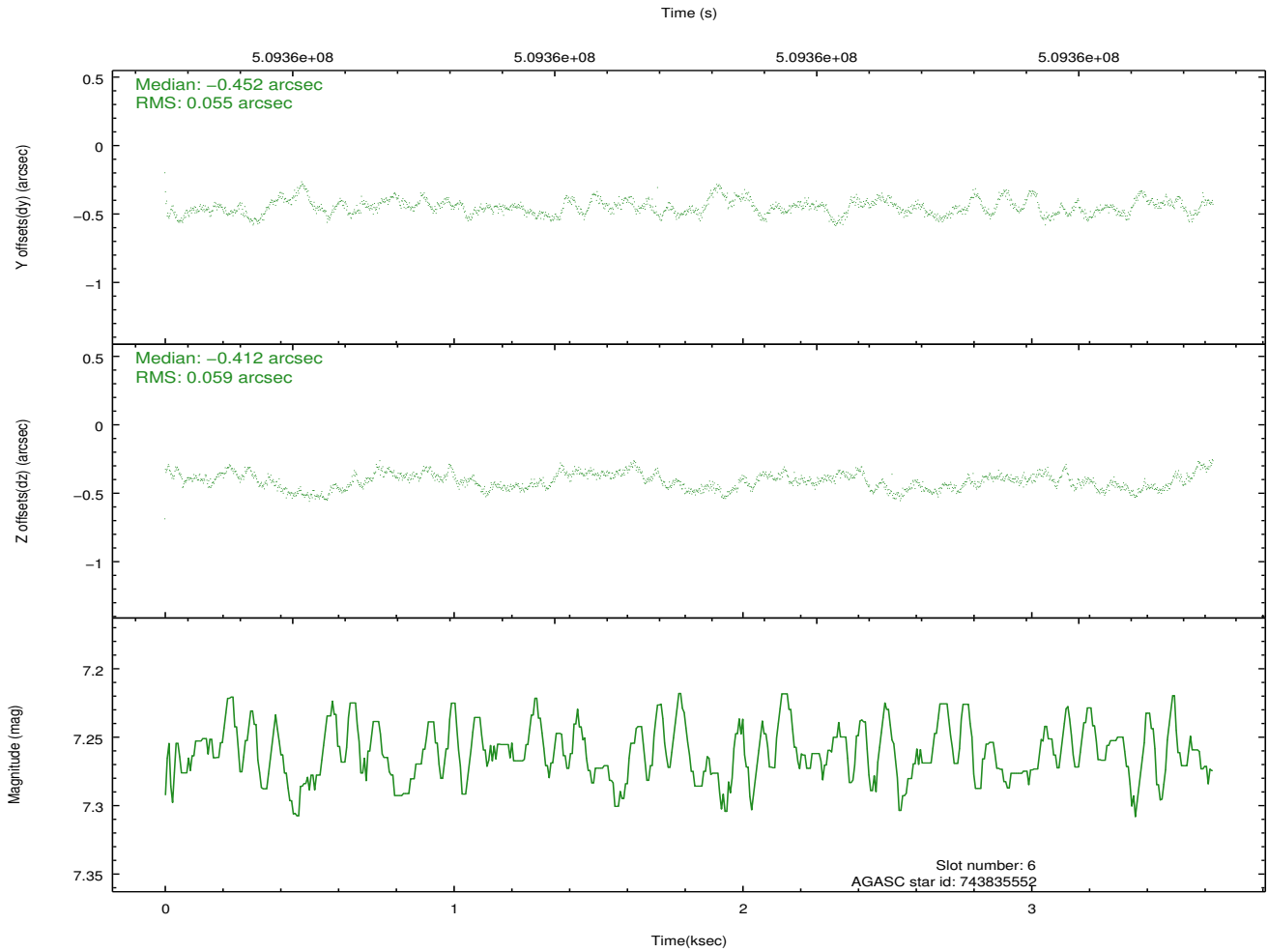
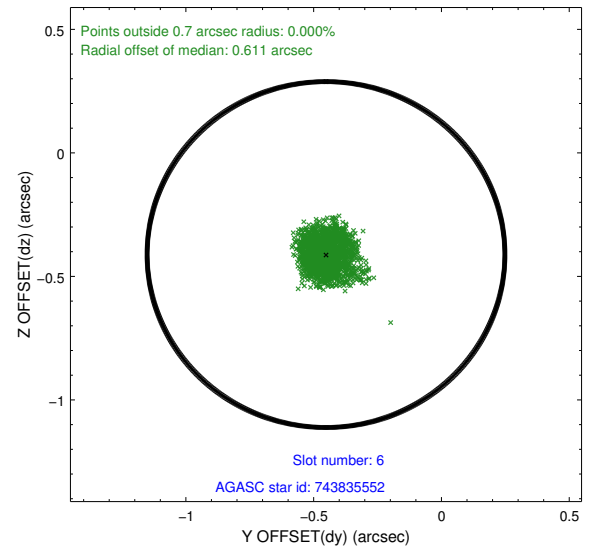
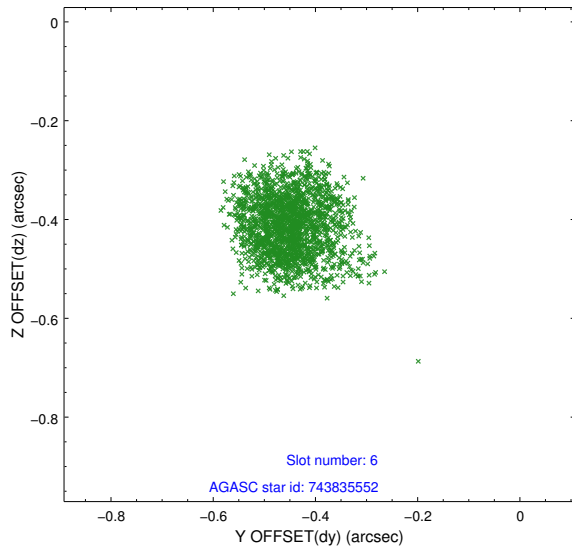
2.4.2 Slot 4



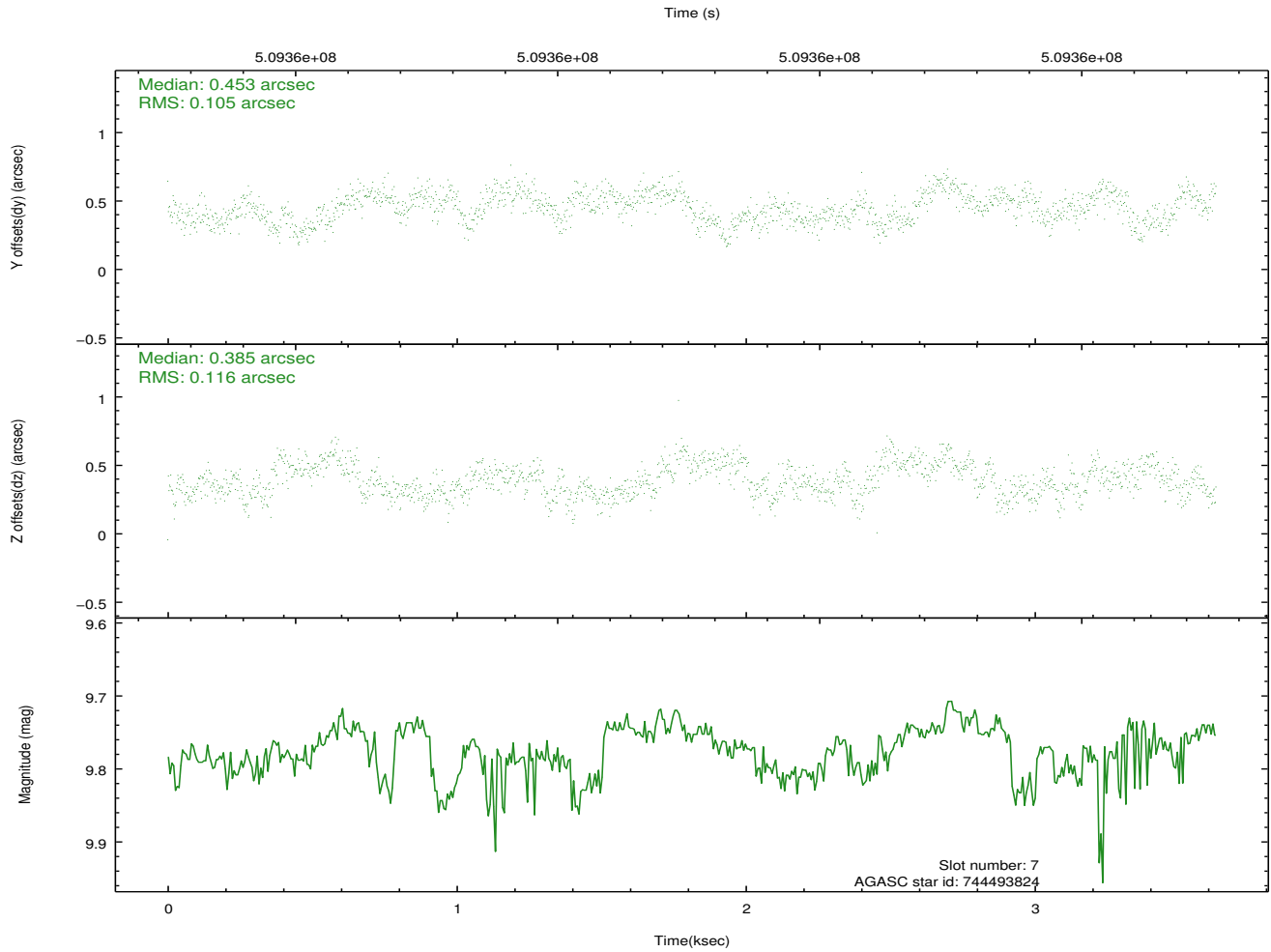
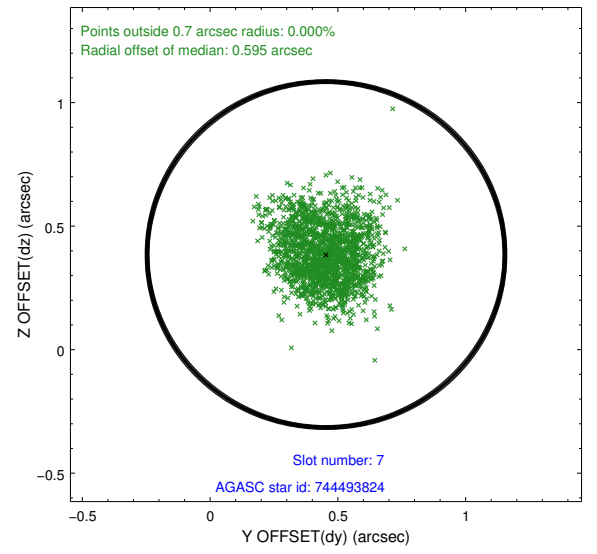
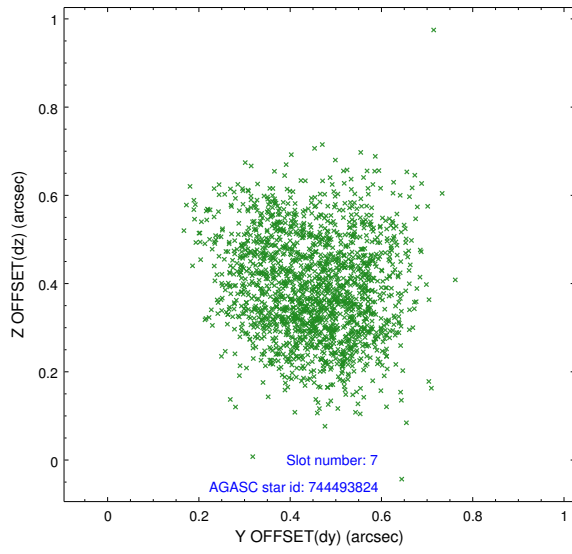
2.4.3 Slot 5



2.4.4 Slot 6

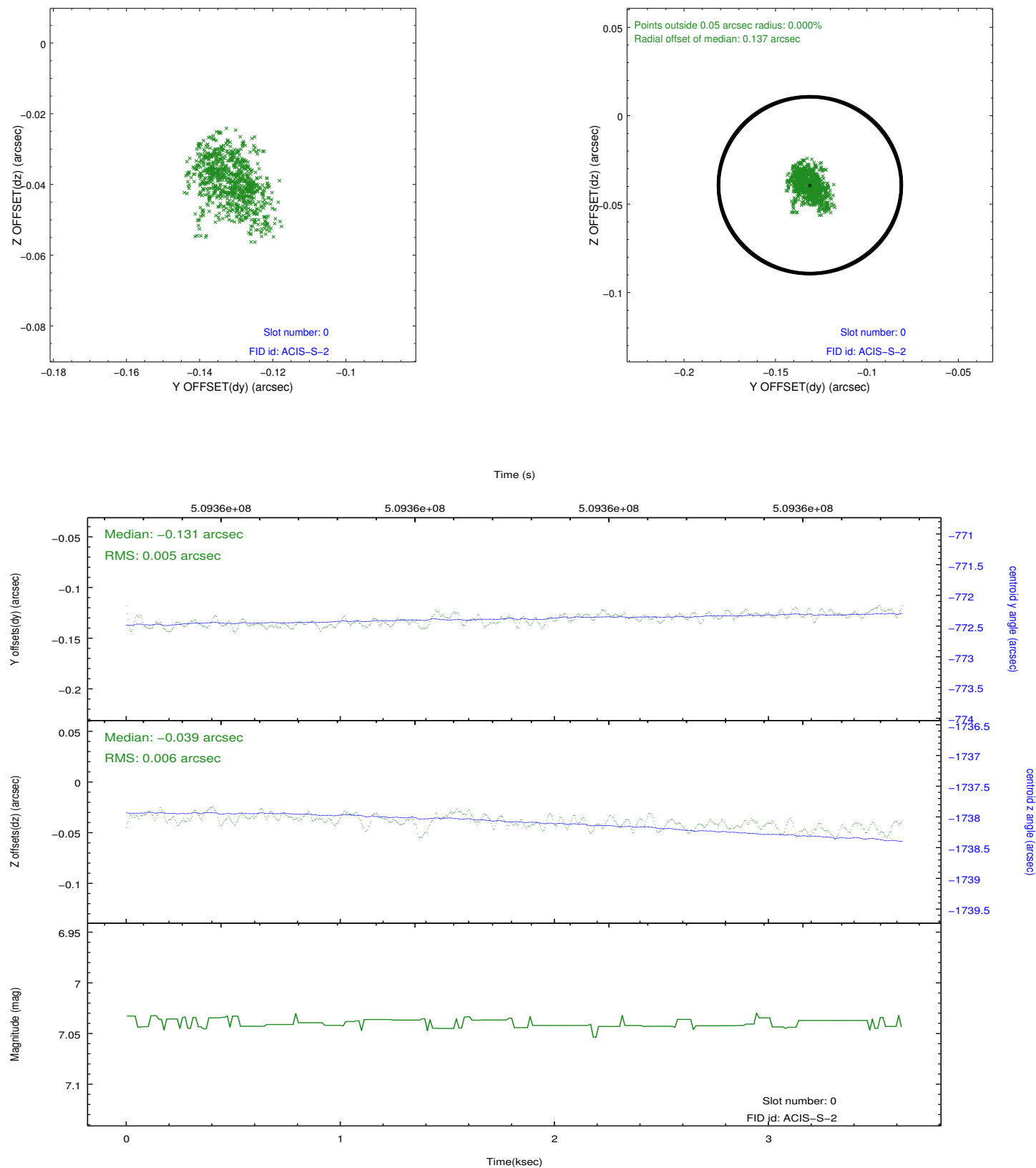


2.4.5 Slot 7

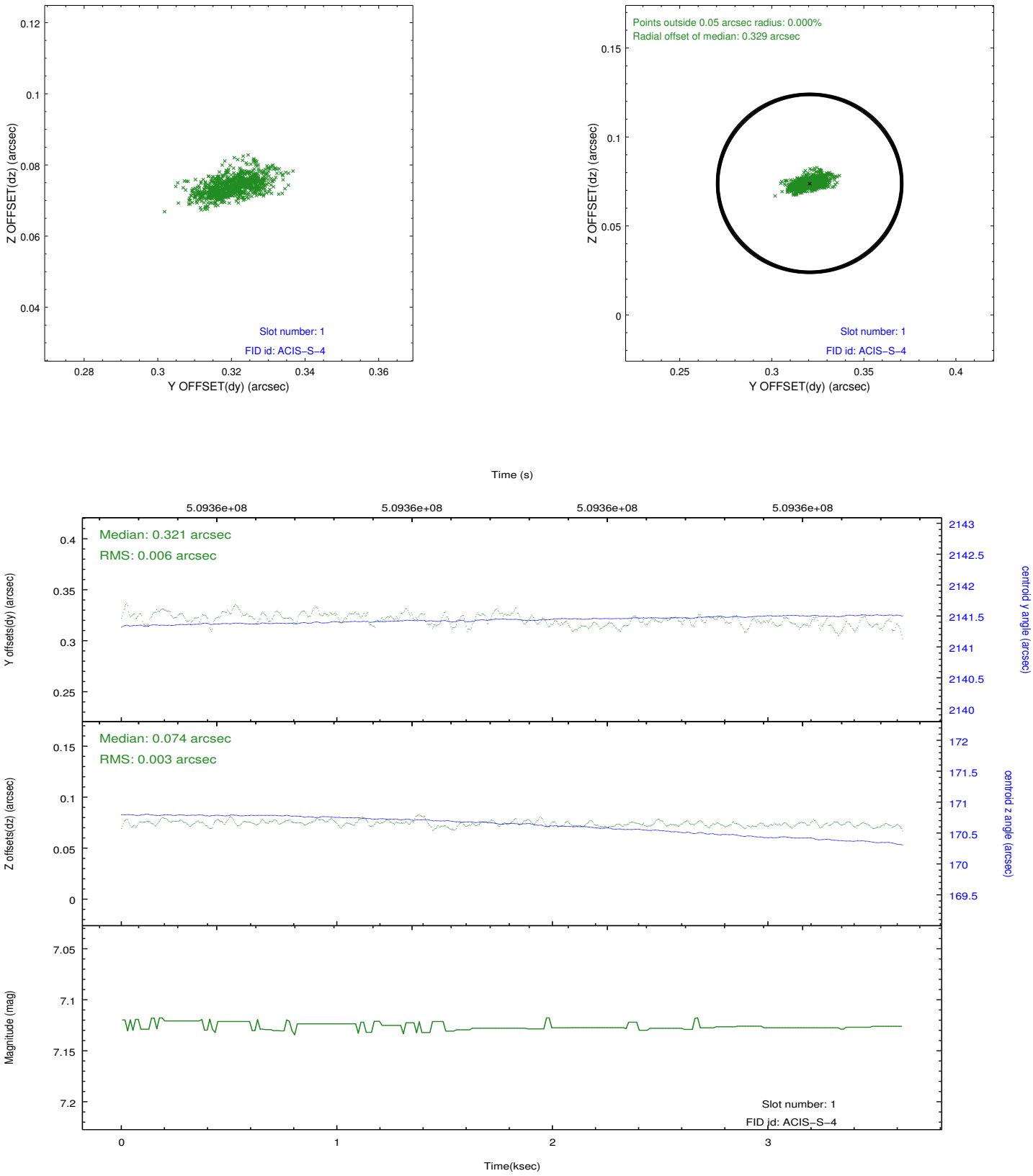


2.5 FID Slots

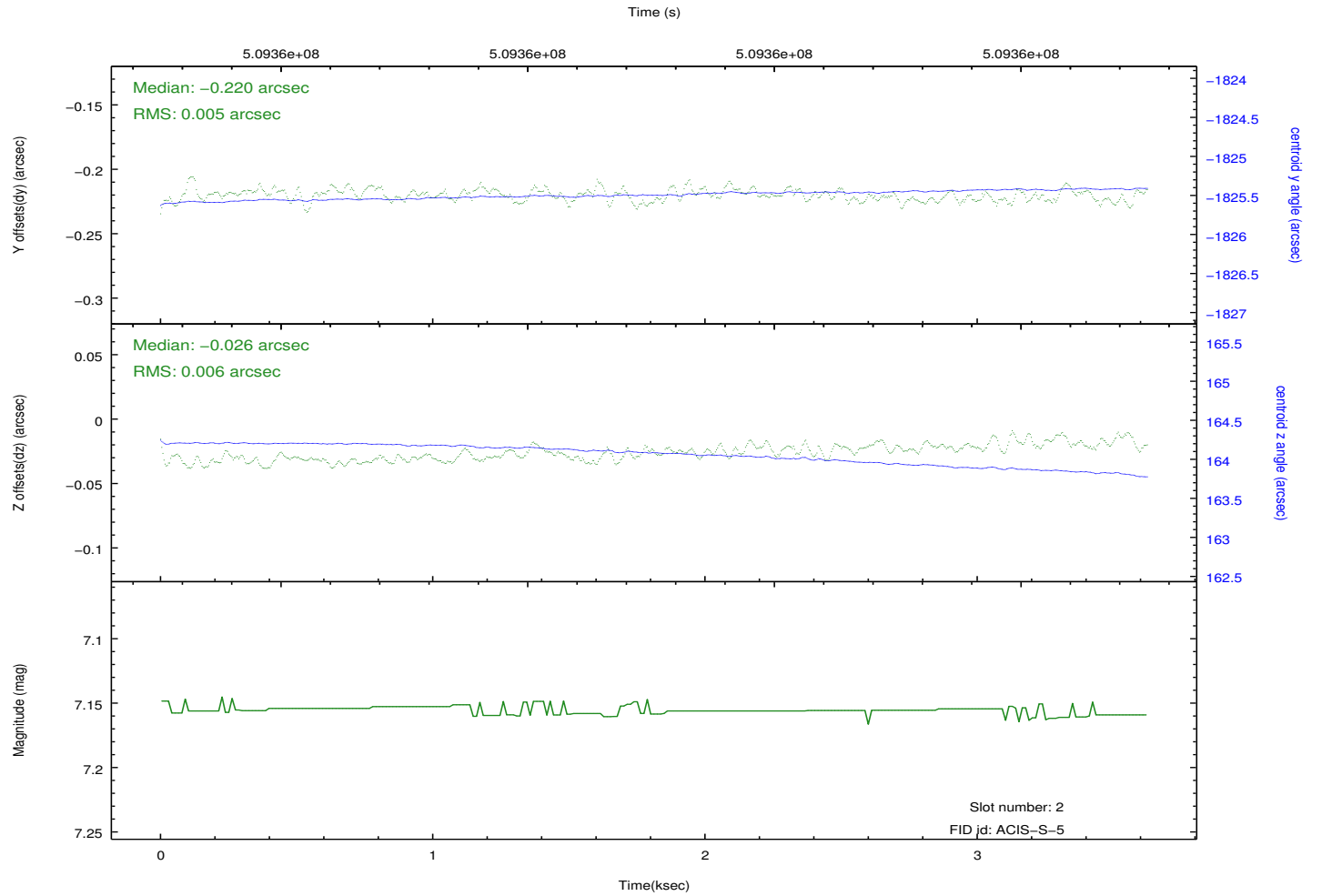
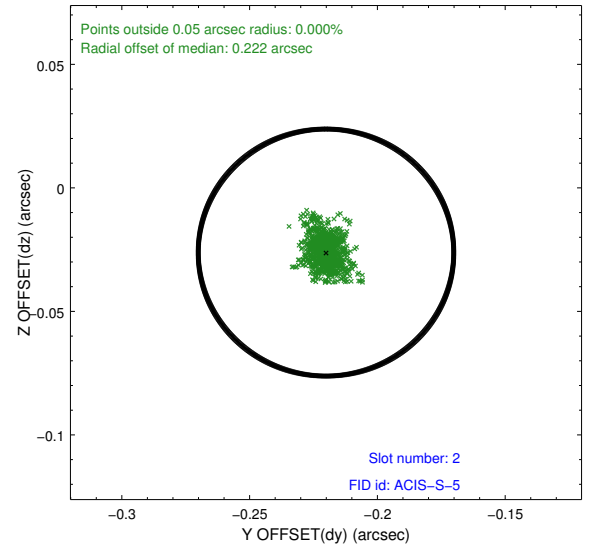
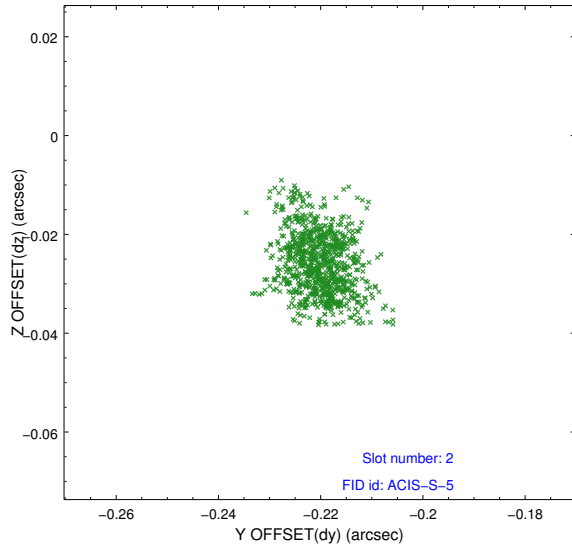
2.5.1 Slot 0



2.5.2 Slot 1



2.5.3 Slot 2



A Summary

A.1 Status

V&V Scientist	Beth Sundheim
V&V Date (YYYY-MM-DD)	2014.12.15
V&V Edition	1
V&V Disposition and Status	OK
V&V Charge Time	3.5677006835341

A.2 Comments

These data have been reprocessed with new aspect alignment calibration files that correct small mean offsets (up to 0.4 arcsecs) and improve overall astrometric accuracy. The new calibration was determined using data from the time period being reprocessed and was performed using cross-correlation of X-ray sources with radio and optical counterparts.