

V&V Reference Report

L2 ASCDS Version : 10.2.4

Observation 15873 - L2 Version 1
Chandra X-Ray Center

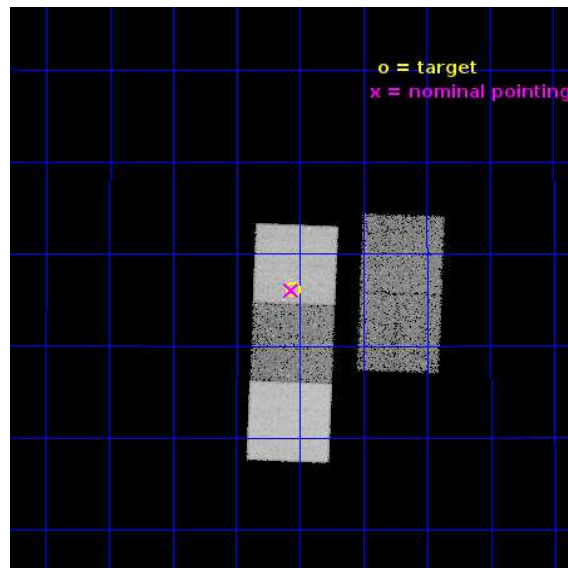
L2 Processing Date : Sep 7 2014

Contents

1	Front	2
2	OBI	3
2.1	OBI	3
2.1.1	Images	3
2.1.2	Bias	3
2.1.3	Parameters	4
2.1.4	Events	4
2.2	Compared Parameters	5
2.3	Aspect	6
2.4	Star Slots	9
2.4.1	Slot 3	9
2.4.2	Slot 4	10
2.4.3	Slot 5	11
2.4.4	Slot 6	12
2.4.5	Slot 7	13
2.5	FID Slots	14
2.5.1	Slot 0	14
2.5.2	Slot 1	15
2.5.3	Slot 2	16
A	Summary	17
A.1	Status	17
A.2	Comments	17

1 Front

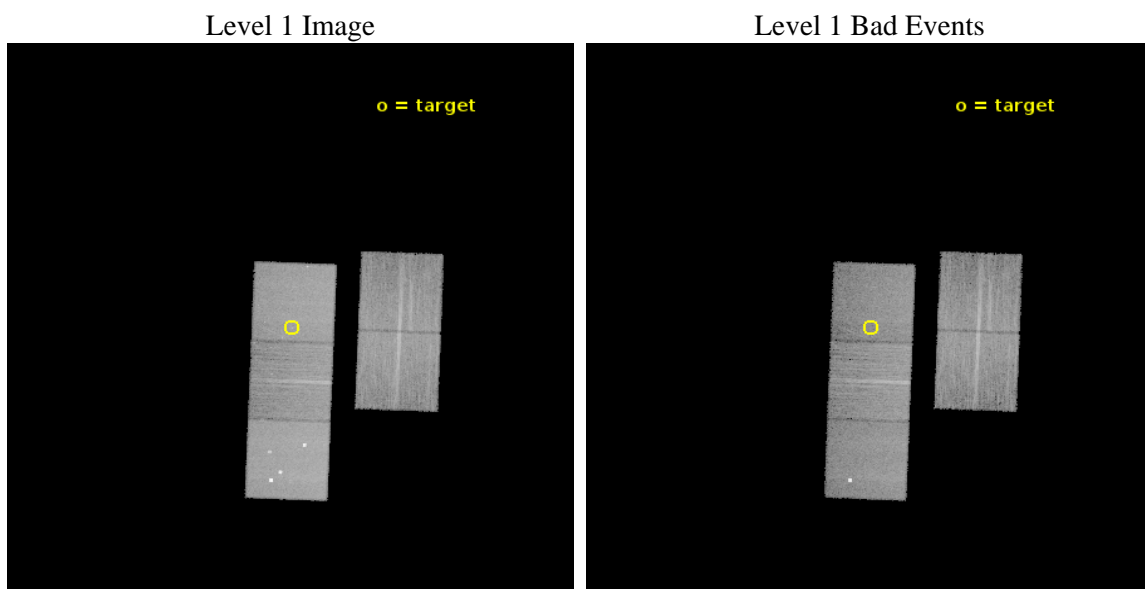
seq_num	502106	Sequence number
obs_id	15873	Observation id
title	Identification of the Host Galaxy of Swift Short GRBs by the Chandra Sub-arcsecond Position	Proposal title
observer	Takanori Sakamoto	Principal investigator
object	GRB 140903A	Source name
dtcycle	0	
cycle	P	events from which exps? Prim/Second/Both
ra_targ	238.013625	Observer's specified target RA [deg]
dec_targ	27.602583	Observer's specified target Dec [deg]
ra_nom	238.01663902172	Nominal RA [deg]
dec_nom	27.600968665986	Nominal Dec [deg]
roll_nom	272.18684739124	Nominal Roll [deg]
revision	1	Processing version of data
ontime	20066.152030408	Sum of GTIs [s]
livetime	19803.972981645	Livetime [s]
ontime2	20065.987870395	Sum of GTIs [s]
ontime3	20062.887959898	Sum of GTIs [s]
ontime5	20066.110990405	Sum of GTIs [s]
ontime6	20066.069950402	Sum of GTIs [s]
ontime7	20066.152030408	Sum of GTIs [s]
l2events	188894	Number of level 2 events



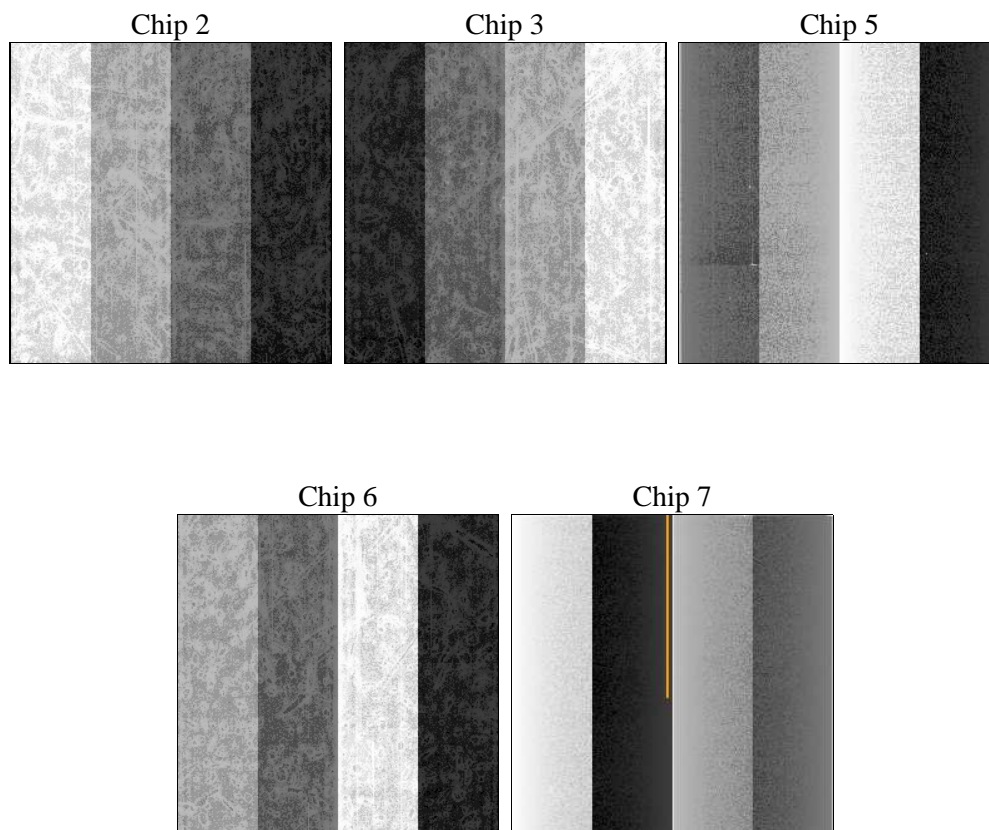
2 OBI

2.1 OBI

2.1.1 Images



2.1.2 Bias



2.1.3 Parameters

obi_num	0	Obi number	sched_exp_time	20000.902000	[s] Scheduled observation exposure time
ascdsver	10.2.4	Processing system revision	ontime	20066.152030408	Sum of GTIs [s]
caldsver	4.6.3	 	ontime2	20065.987870395	Sum of GTIs [s]
date	2014-09-07T06:12:50	Date and time of file creation	ontime3	20062.887959898	Sum of GTIs [s]
revision	1	Processing version of data	ontime5	20066.110990405	Sum of GTIs [s]
			ontime6	20066.069950402	Sum of GTIs [s]
			ontime7	20066.152030408	Sum of GTIs [s]
			l1events	701225	Number of level 1 events

2.1.4 Events

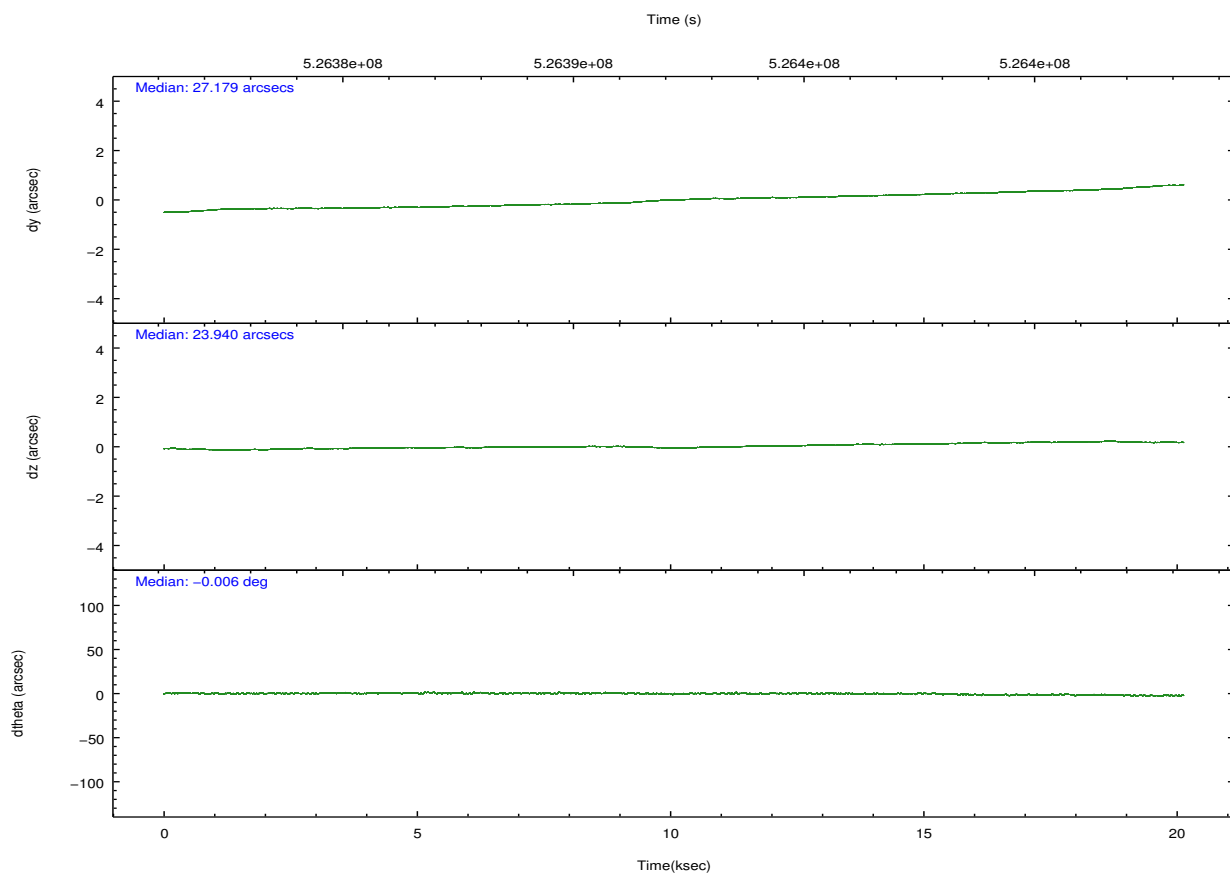
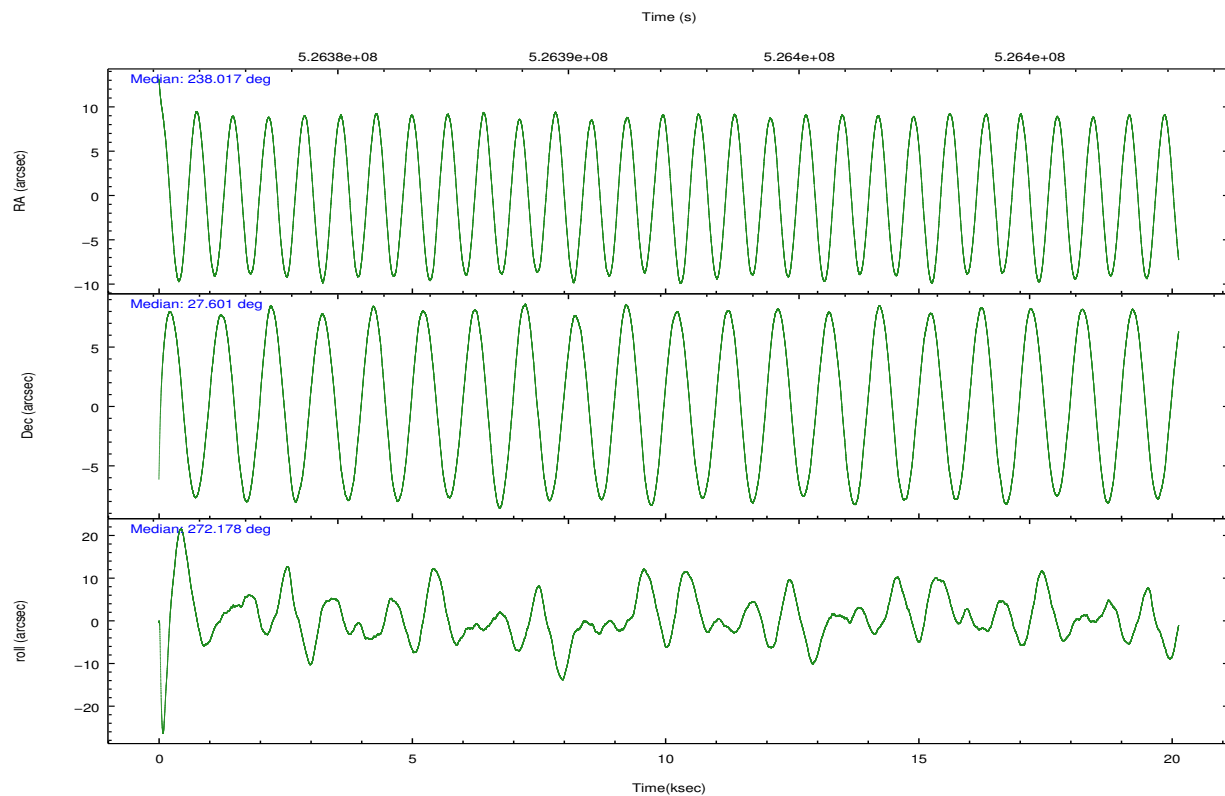
	ccd 2	ccd 3	ccd 5	ccd 6	ccd 7
level 1 events	121493	111670	194885	121859	151318
rejected events	106920	98919	97290	106742	82057
rejected %	88%	88%	49%	87%	54%

	ccd 2	ccd 3	ccd 5	ccd 6	ccd 7
grade 0 events	5610	4689	13593	5709	6767
	4%	4%	6%	4%	4%
grade 1 events	63	62	390	62	237
	0%	0%	0%	0%	0%
grade 2 events	3587	2737	30151	3473	15183
	2%	2%	15%	2%	10%
grade 3 events	1299	1288	3382	1441	5881
	1%	1%	1%	1%	3%
grade 4 events	1509	1378	3302	1352	5775
	1%	1%	1%	1%	3%
grade 5 events	4408	5401	14716	5433	14644
	3%	4%	7%	4%	9%
grade 6 events	2573	2663	47195	3145	35674
	2%	2%	24%	2%	23%
grade 7 events	102444	93452	82156	101244	67157
	84%	83%	42%	83%	44%

2.2 Compared Parameters

Parameter	Planned	Actual	Parameter	Planned	Actual
Instrument	ACIS	ACIS	Obspar format version number	7	7
Detector	ACIS-23567	ACIS-23567	Obspar file type	PREDICTED	ACTUAL
Grating	NONE	NONE	Obspar update status	NONE	UPDATED
Data mode	VFAINT	VFAINT	Number of optional ACIS chips dropped	0	0
Observation mode	POINTING	POINTING	On-chip summing requested	N	N
[deg] Pointing RA	237.999784	238.0166390217209	Subarray requested	NONE	NONE
[deg] Pointing Dec	27.623999	27.60096866598577	Alternating exposures requested	N	N
[deg] Pointing Roll	272.038011	272.1868473912363	[s] Primary exposure time	0.000000	3.1
[mm] SIM focus pos	-0.684267	-0.6828225247311905			
[mm] SIM defocus	0	0.001444936568705701			
[mm] SIM translation stage pos	-190.132523	-190.1425803651734			
[mm] SIM translation stage offset	0	0.01005778216563158			
[s] Observation start time (MET)	526382241.184000	526380878.57889			
Observation start date	2014-09-06T09:16:14	2014-09-06T08:54:38			
[s] Observation end time (MET)	526402241.184000	526402467.13009			
Observation end date	2014-09-06T14:49:34	2014-09-06T14:54:27			
Read mode	TIMED	TIMED			

2.3 Aspect

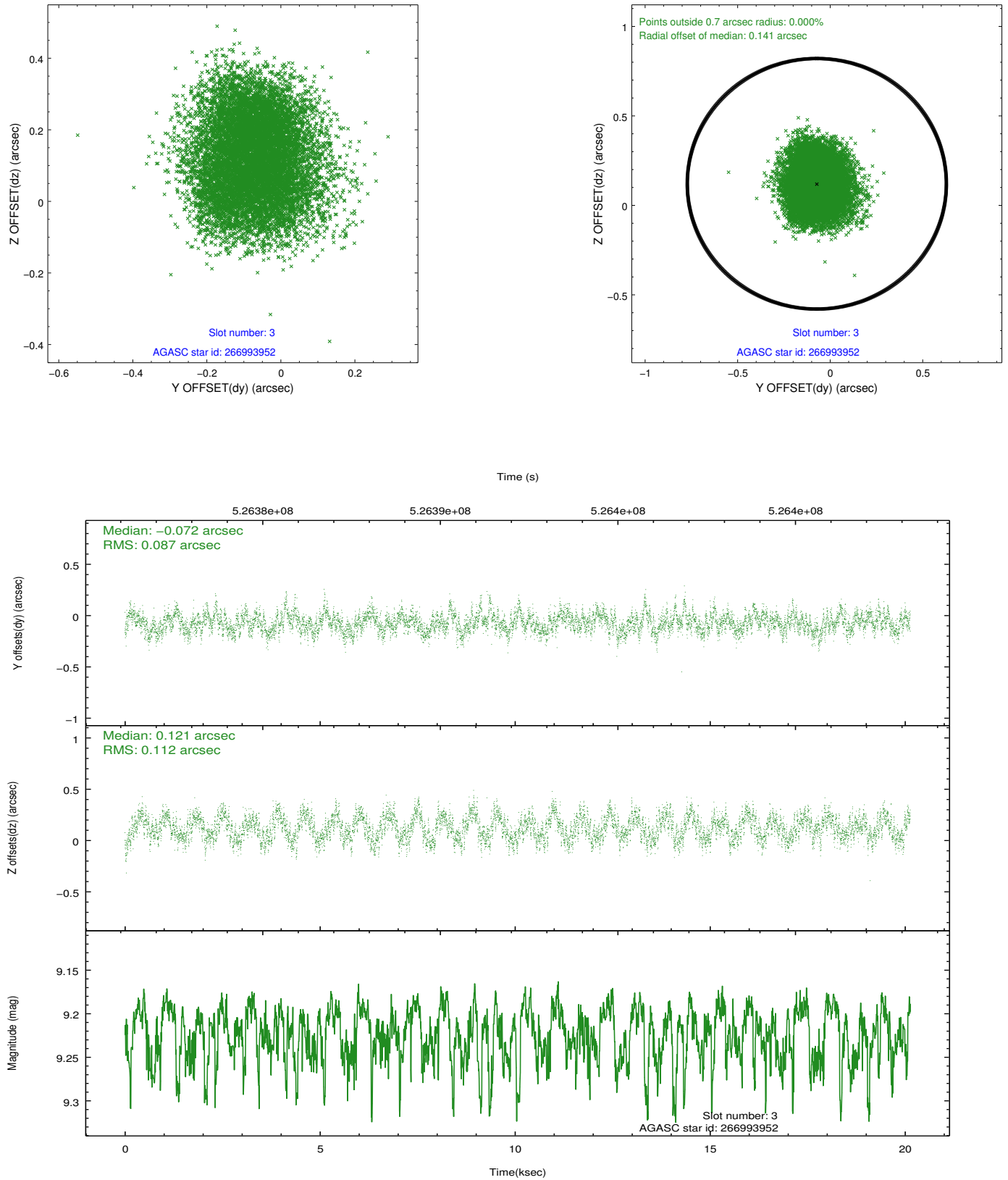


Slot Statistics

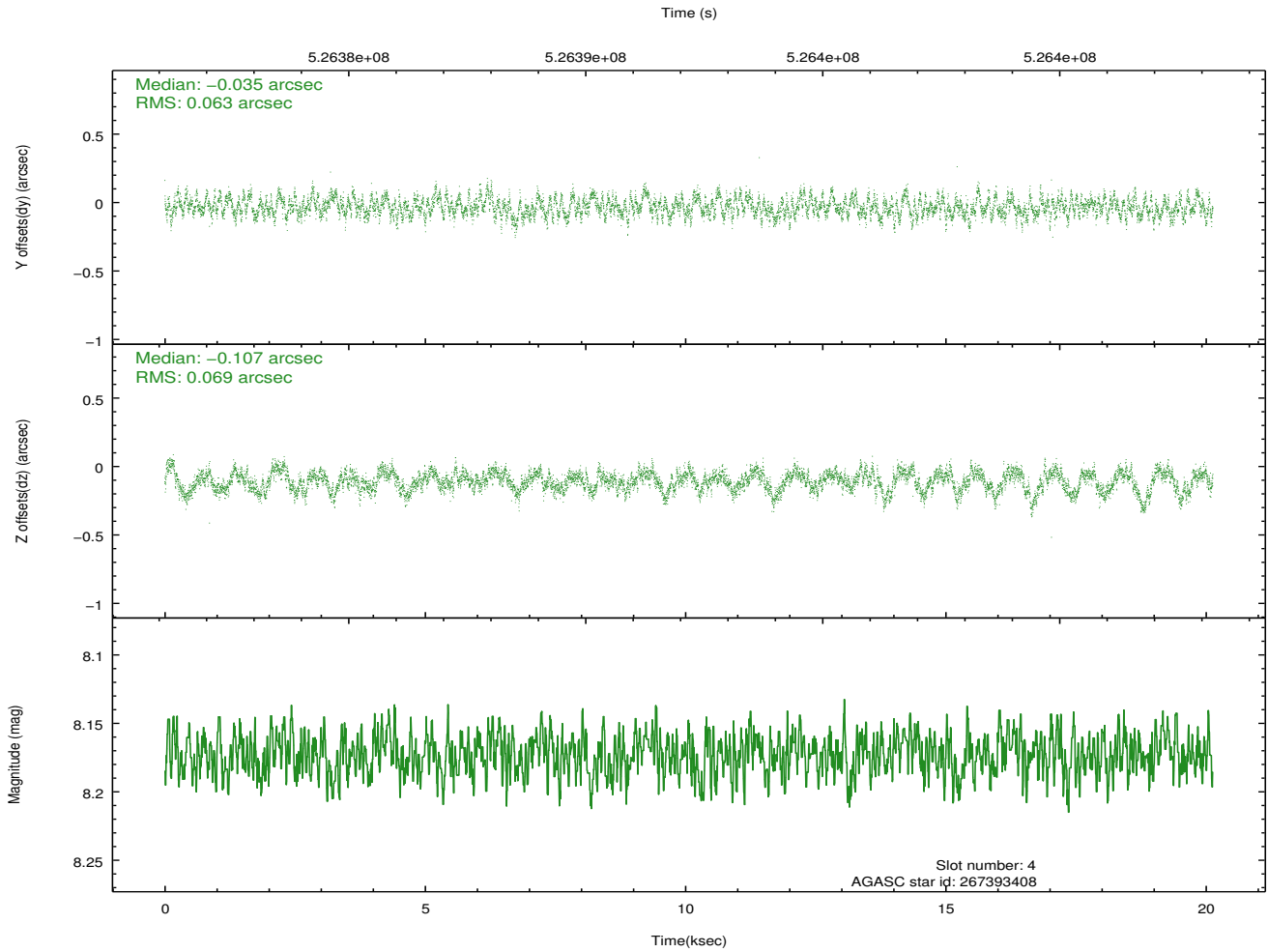
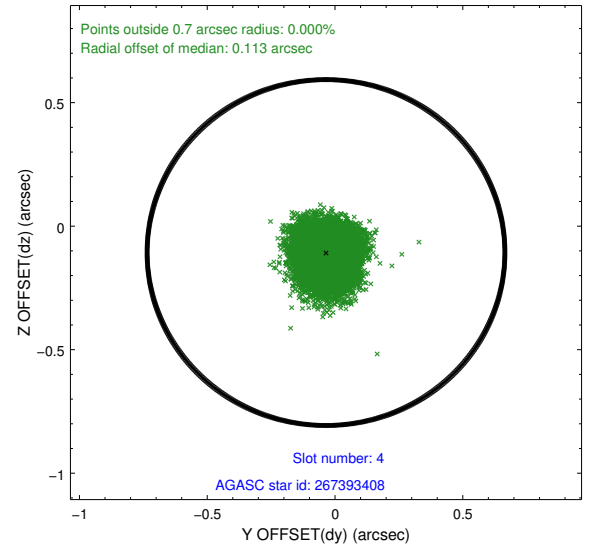
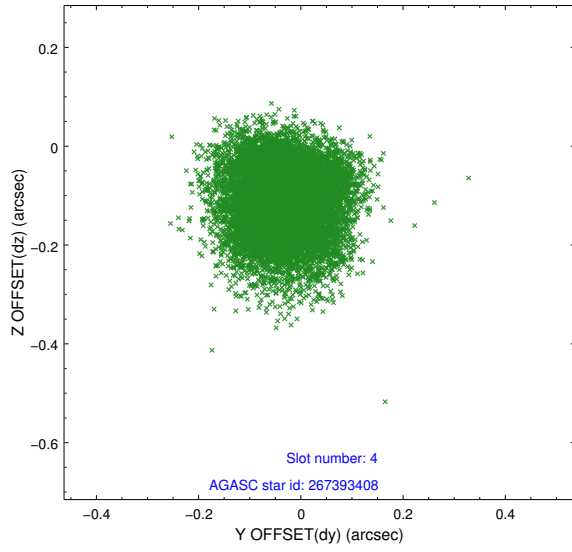
slot	status	id	mag	n_pts	med_dy	med_dz	dr1	dr2	ra	dec	mean_y	mean_z
0	FID	ACIS-S-4	7.02	4911	0.264	0.005	0.012	0.019	0.000000	0.000000	2133.14	163.20
1	FID	ACIS-S-5	7.07	4911	-0.287	0.004	0.020	0.033	0.000000	0.000000	-1833.37	156.56
2	FID	ACIS-S-6	7.16	4910	-0.005	0.006	0.011	0.022	0.000000	0.000000	380.90	800.38
3	GUIDE	266993952	9.22	9812	-0.072	0.121	0.154	0.238	237.448812	27.306504	1076.37	-1801.12
4	GUIDE	267393408	8.17	9821	-0.035	-0.107	0.101	0.159	238.285267	27.814443	-653.57	932.79
5	GUIDE	267393952	10.31	9625	0.014	-0.236	0.350	0.511	238.563395	27.896456	-920.56	1827.14
6	GUIDE	267393968	9.89	9796	0.184	0.316	0.240	0.382	237.462984	27.863539	-925.55	-1675.85
7	GUIDE	266996160	9.19	9810	-0.084	-0.112	0.131	0.206	237.759236	26.946806	2408.62	-857.91

2.4 Star Slots

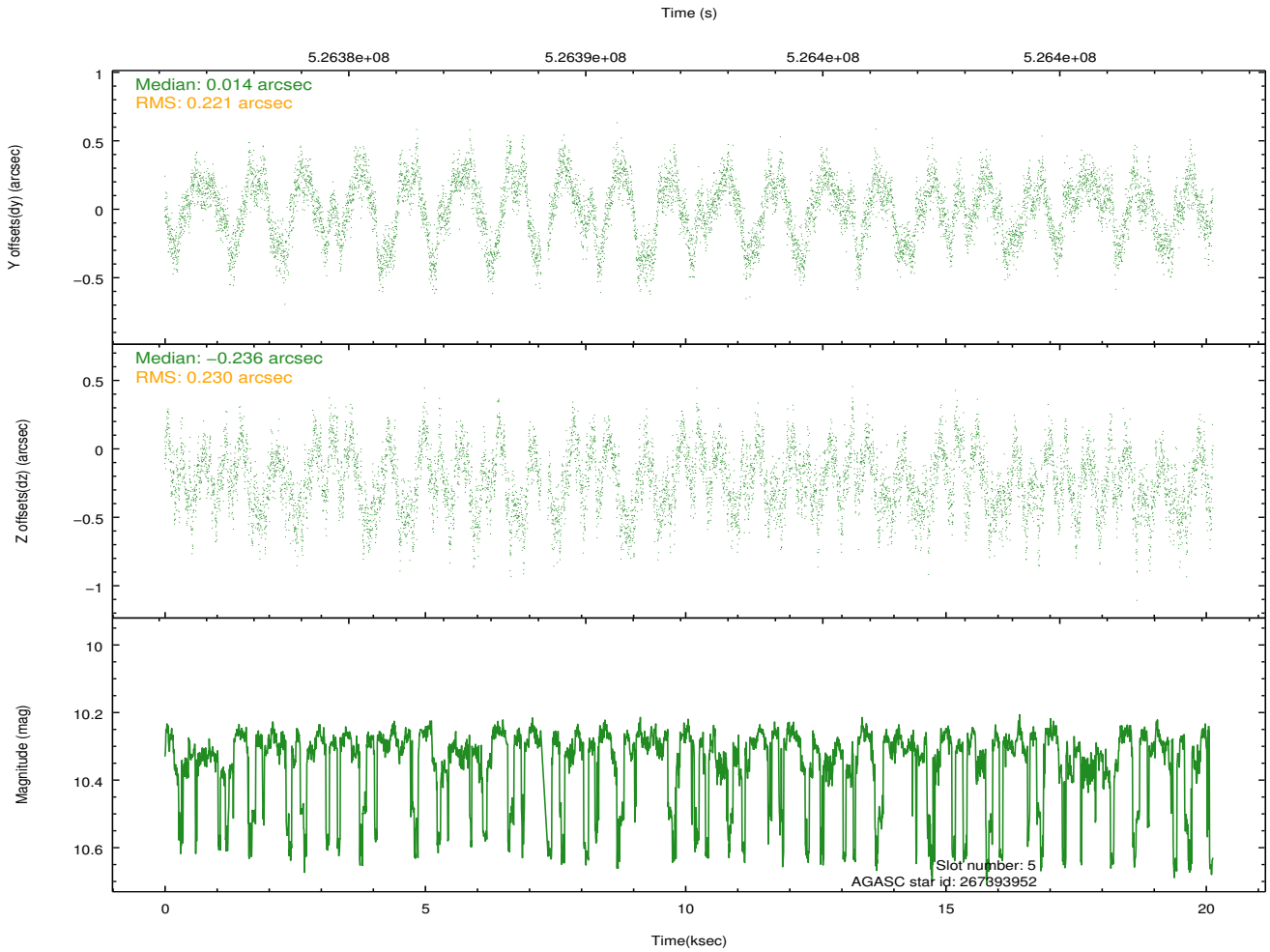
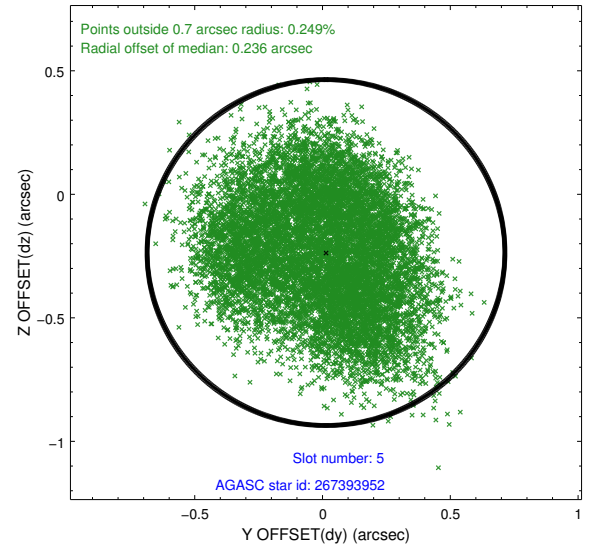
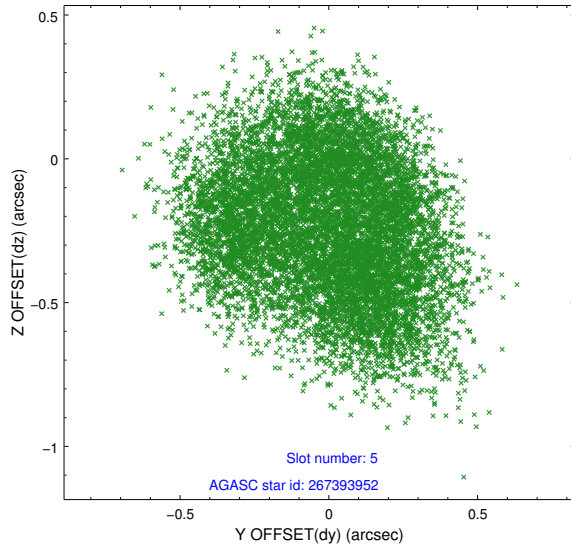
2.4.1 Slot 3



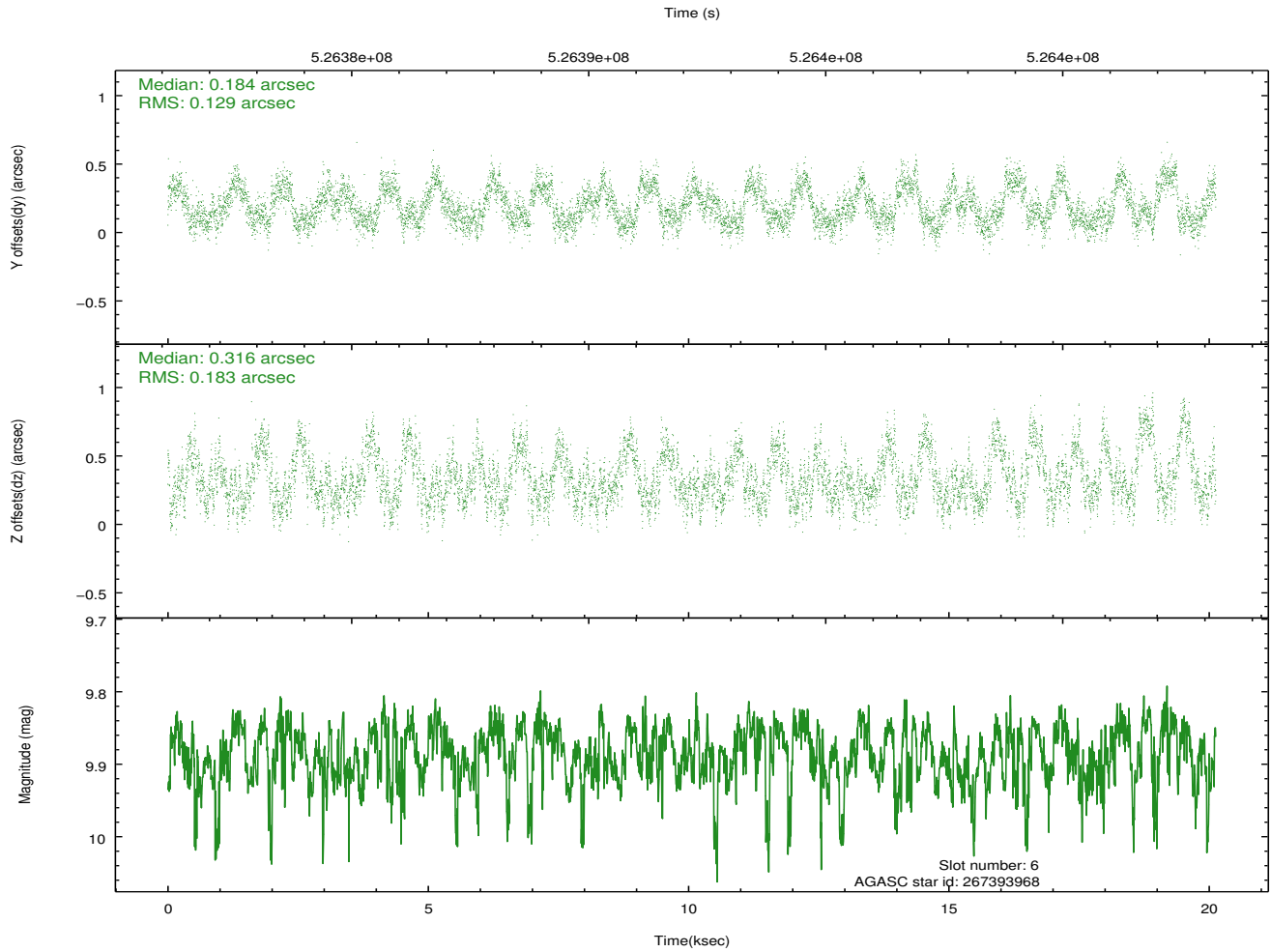
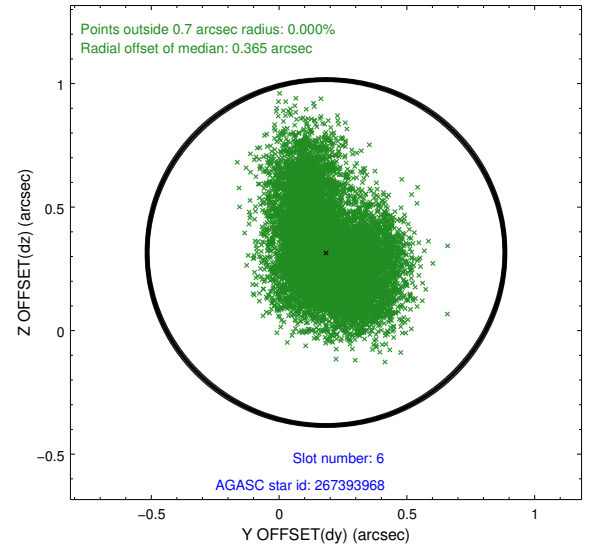
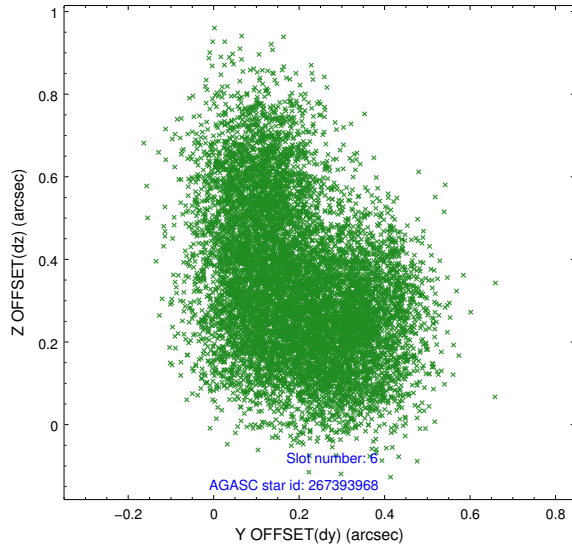
2.4.2 Slot 4



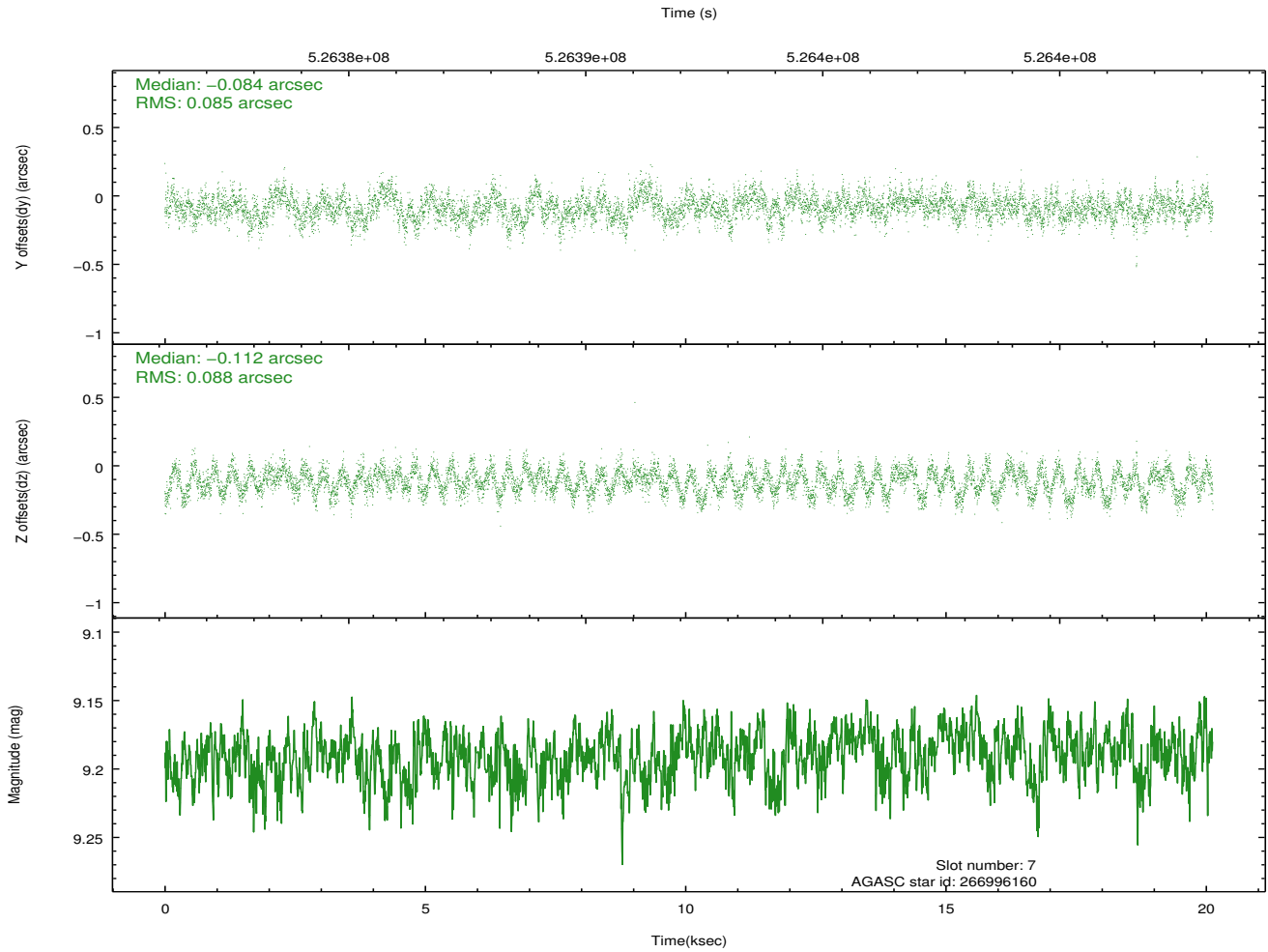
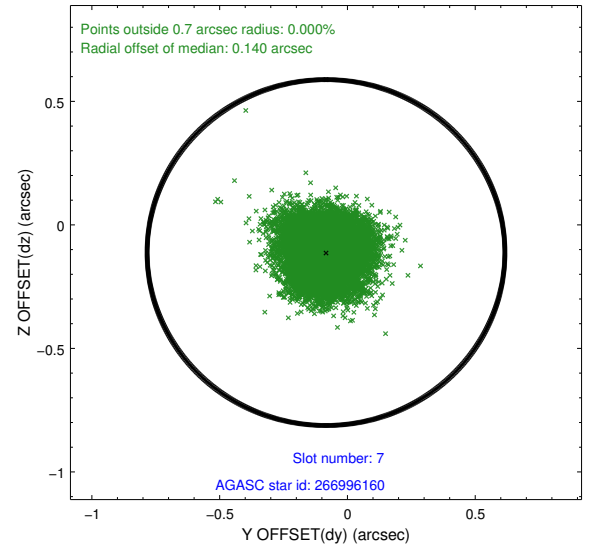
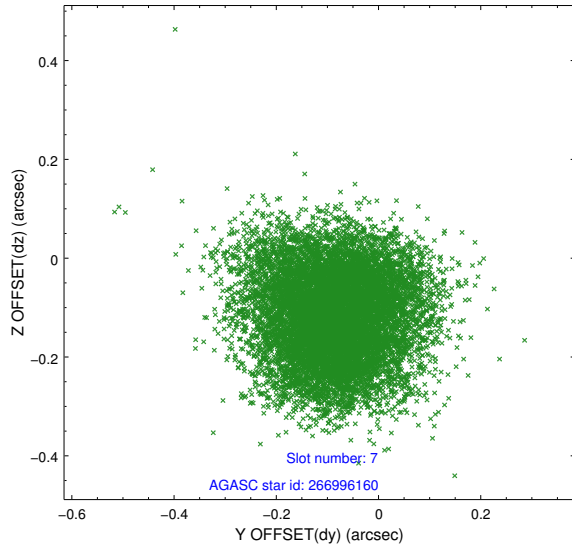
2.4.3 Slot 5



2.4.4 Slot 6

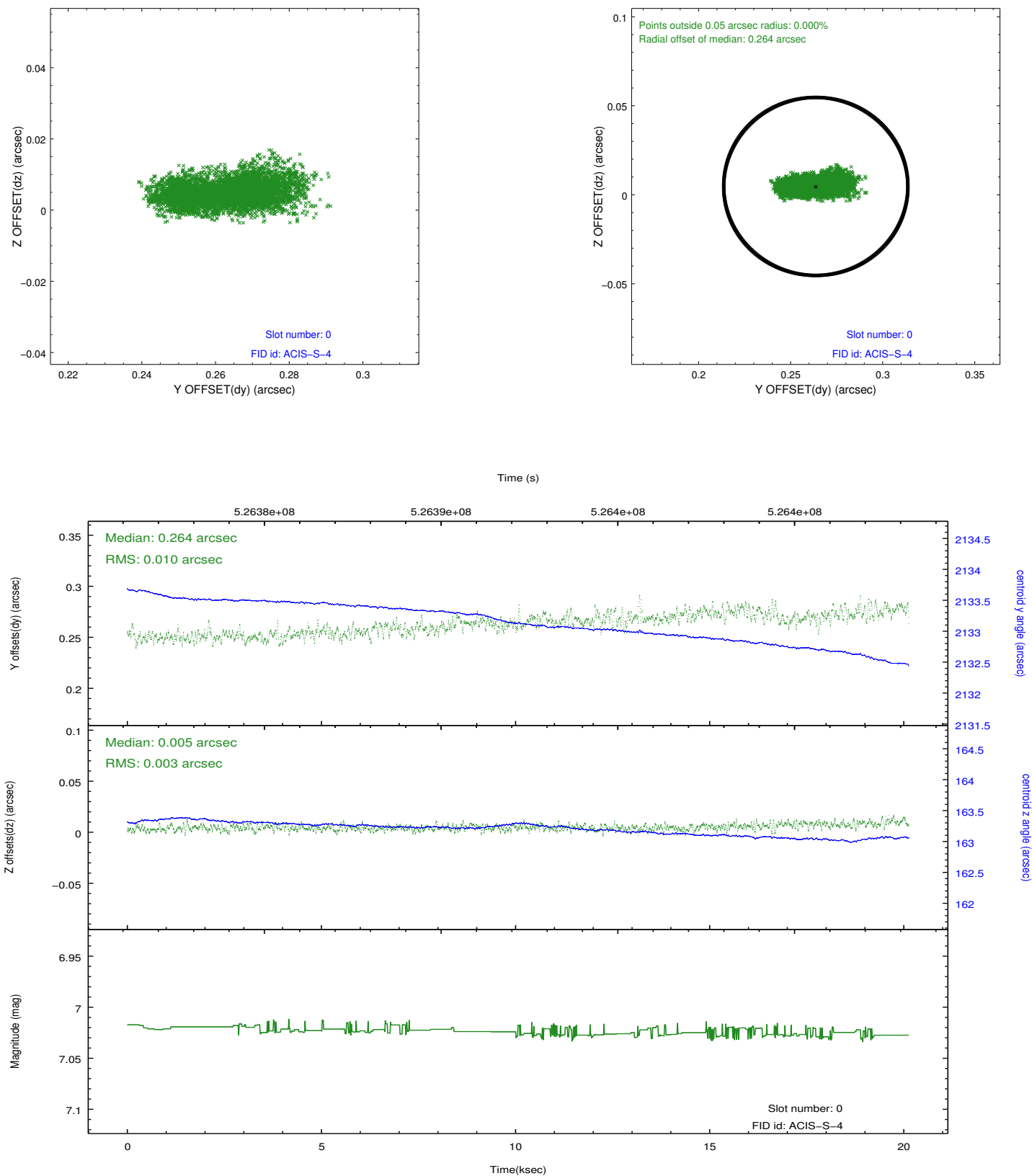


2.4.5 Slot 7

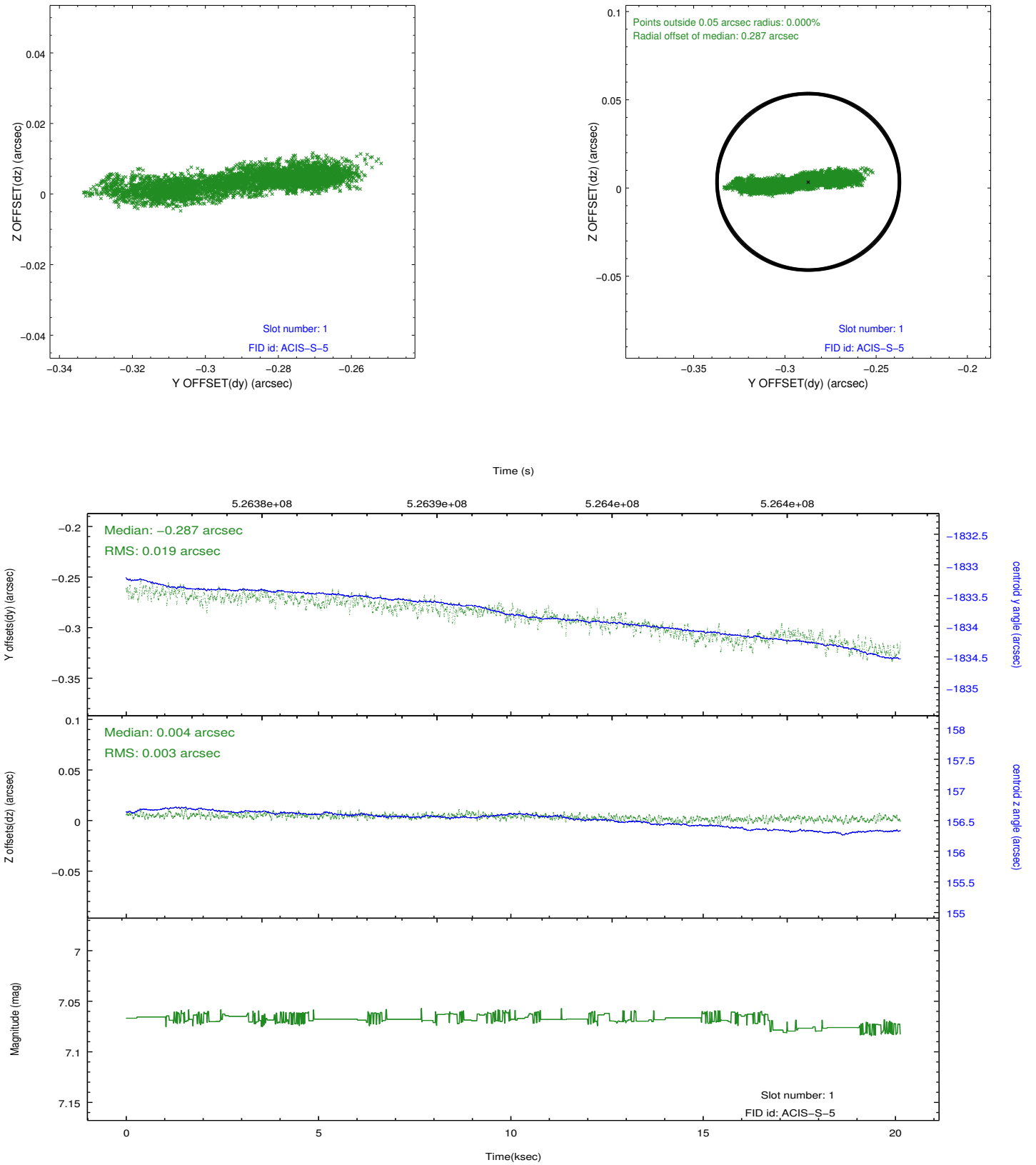


2.5 FID Slots

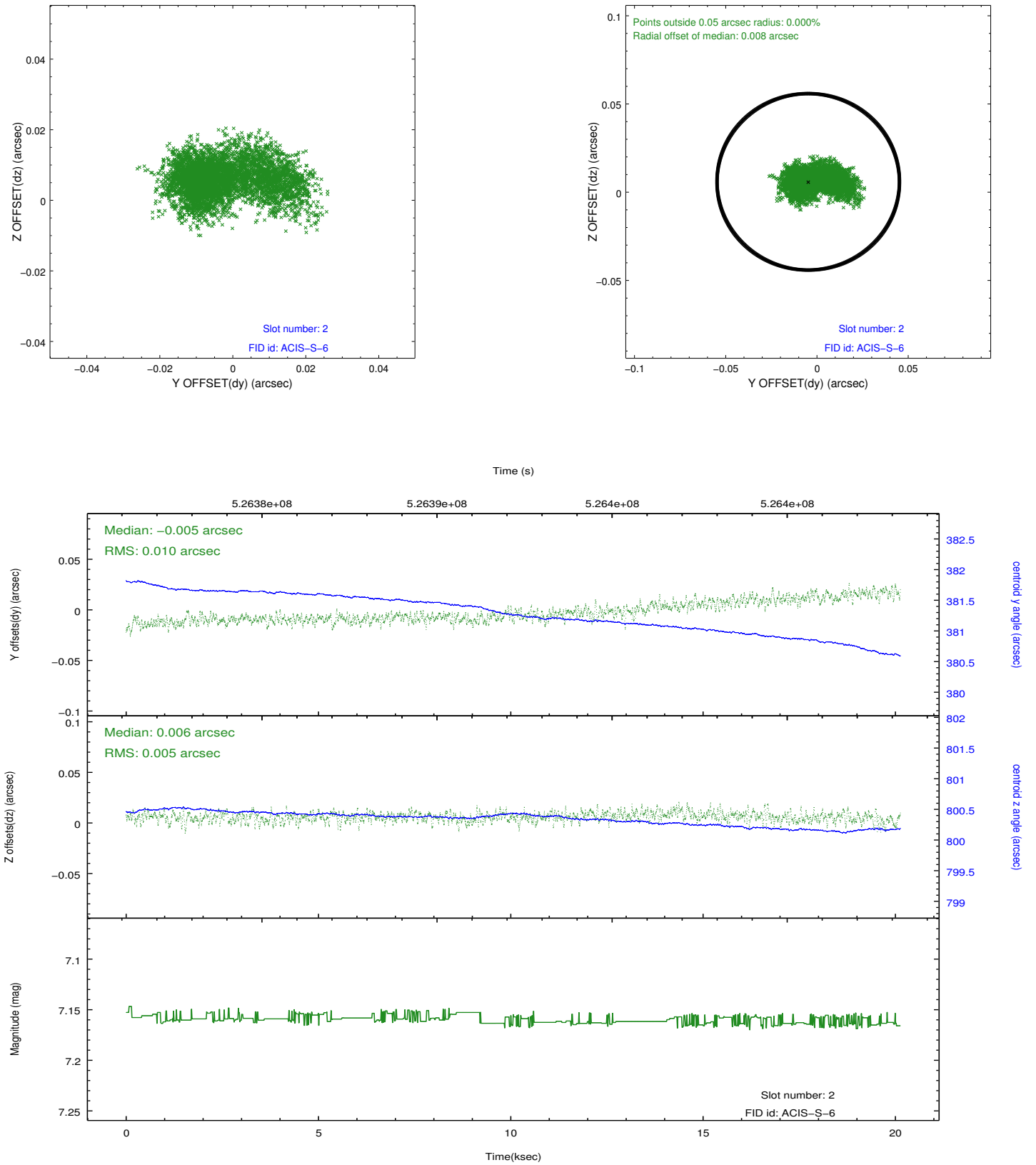
2.5.1 Slot 0



2.5.2 Slot 1



2.5.3 Slot 2



A Summary

A.1 Status

V&V Scientist	Joy Nichols
V&V Date (YYYY-MM-DD)	2014.09.07
V&V Edition	1
V&V Disposition and Status	OK
V&V Charge Time	20.066152030408

A.2 Comments