

V&V Reference Report

L2 ASCDS Version : 10.3.1

Observation 17558 - L2 Version 1
Chandra X-Ray Center

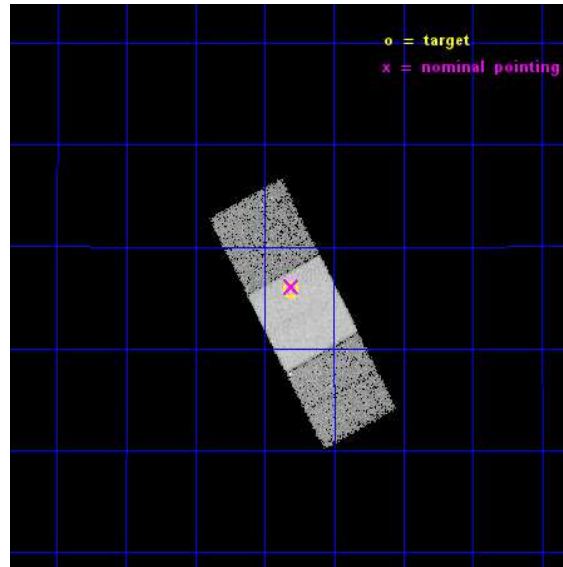
L2 Processing Date : Dec 9 2014

Contents

1	Front	2
2	OBI	3
2.1	OBI	3
2.1.1	Images	3
2.1.2	Bias	3
2.1.3	Parameters	4
2.1.4	Events	4
2.2	Compared Parameters	5
2.3	Aspect	6
2.4	Star Slots	9
2.4.1	Slot 3	9
2.4.2	Slot 4	10
2.4.3	Slot 5	11
2.4.4	Slot 6	12
2.4.5	Slot 7	13
2.5	FID Slots	14
2.5.1	Slot 0	14
2.5.2	Slot 1	15
2.5.3	Slot 2	16
A	Summary	17
A.1	Status	17
A.2	Comments	17

1 Front

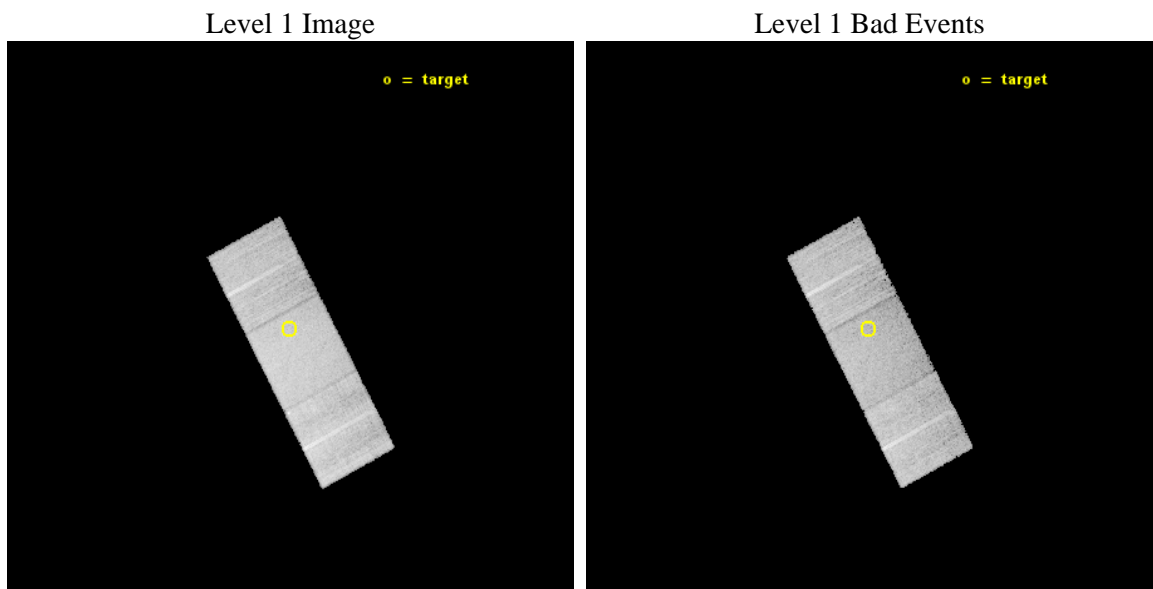
seq_num	401685	Sequence number
obs_id	17558	Observation id
title	A second HLX-1-like object in CXO J122518.6+144545	Proposal title
observer	MSc Marianne Heida	Principal investigator
object	CXO J122518.6+144545	Source name
dtcycle	0	
cycle	P	events from which exps? Prim/Second/Both
ra_targ	186.327917	Observer's specified target RA [deg]
dec_targ	14.762694	Observer's specified target Dec [deg]
ra_nom	186.32683574715	Nominal RA [deg]
dec_nom	14.76799475489	Nominal Dec [deg]
roll_nom	62.064603798397	Nominal Roll [deg]
revision	1	Processing version of data
ontime	19985.700153708	Sum of GTIs [s]
livetime	19724.572267942	Livetime [s]
ontime6	19982.559083343	Sum of GTIs [s]
ontime7	19985.700153708	Sum of GTIs [s]
ontime8	19982.55910331	Sum of GTIs [s]
l2events	76565	Number of level 2 events



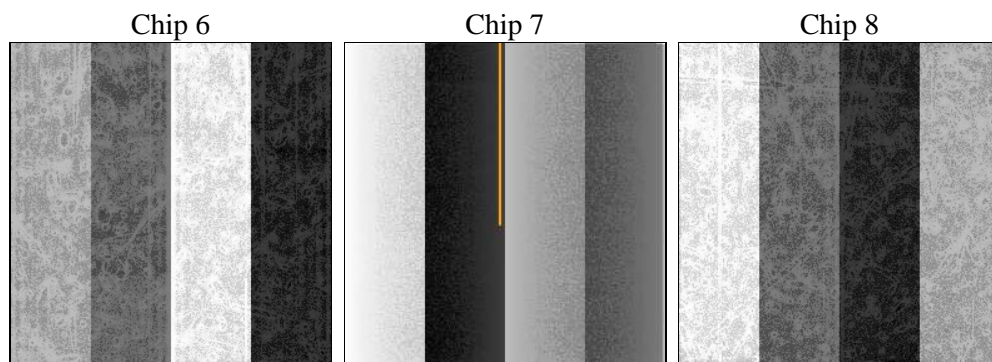
2 OBI

2.1 OBI

2.1.1 Images



2.1.2 Bias



2.1.3 Parameters

obi_num	0	Obi number	sched_exp_time	20000.000000	[s] Scheduled observation exposure time
ascdsver	10.3.1	Processing system revision	ontime	19985.700153708	Sum of GTIs [s]
caldsver	4.6.4	 	ontime6	19982.559083343	Sum of GTIs [s]
date	2014-12-09T07:16:50	Date and time of file creation	ontime7	19985.700153708	Sum of GTIs [s]
revision	1	Processing version of data	ontime8	19982.55910331	Sum of GTIs [s]
			l1events	348479	Number of level 1 events

2.1.4 Events

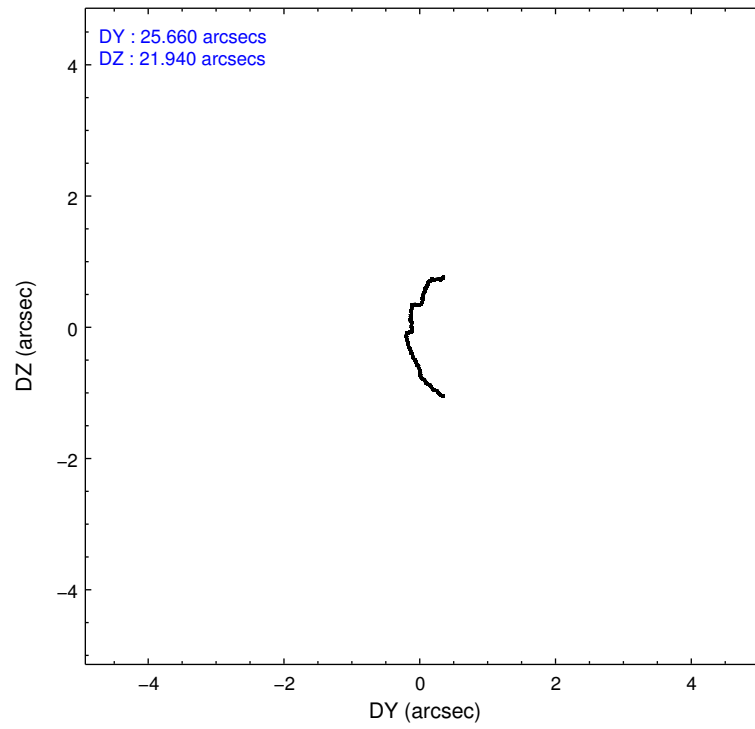
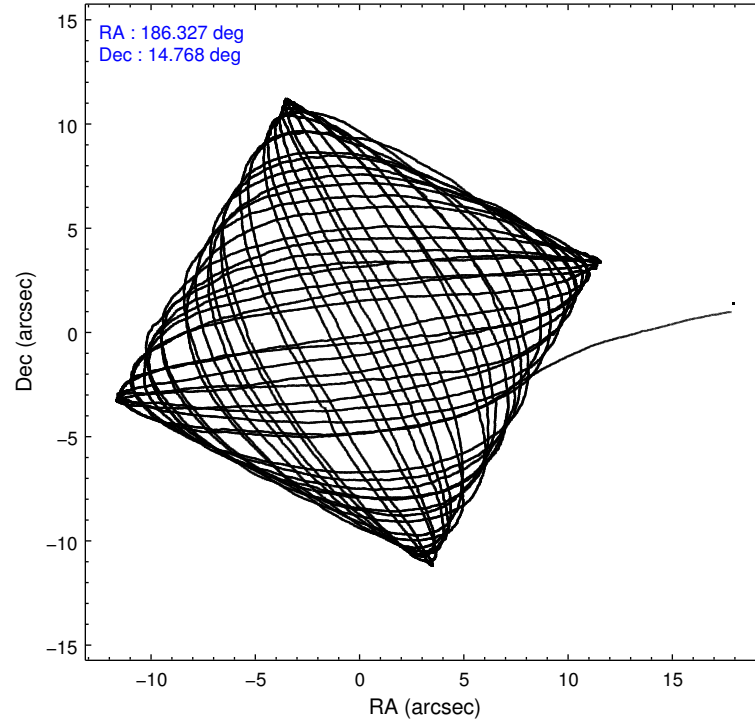
	ccd 6	ccd 7	ccd 8
level 1 events	95217	127008	126254
rejected events	83463	71587	92637
rejected %	87%	56%	73%

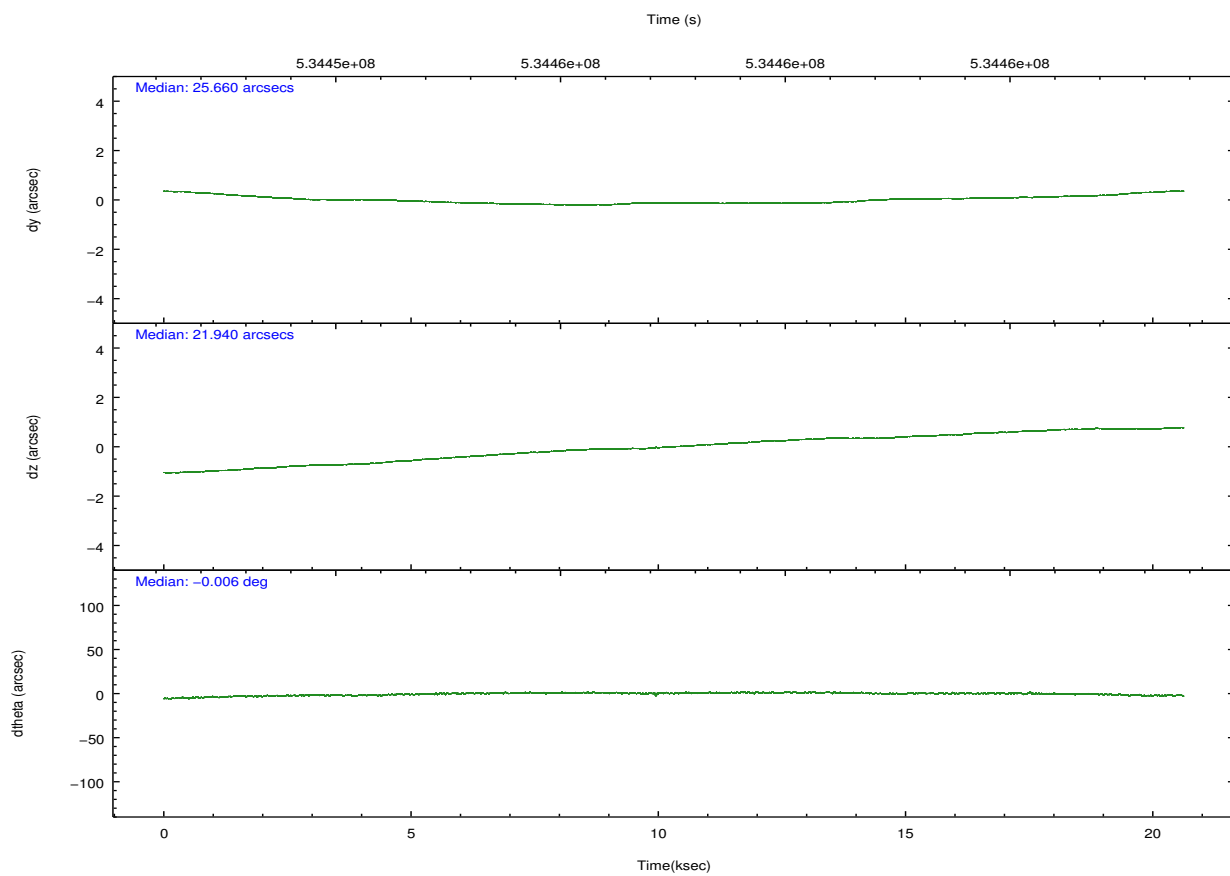
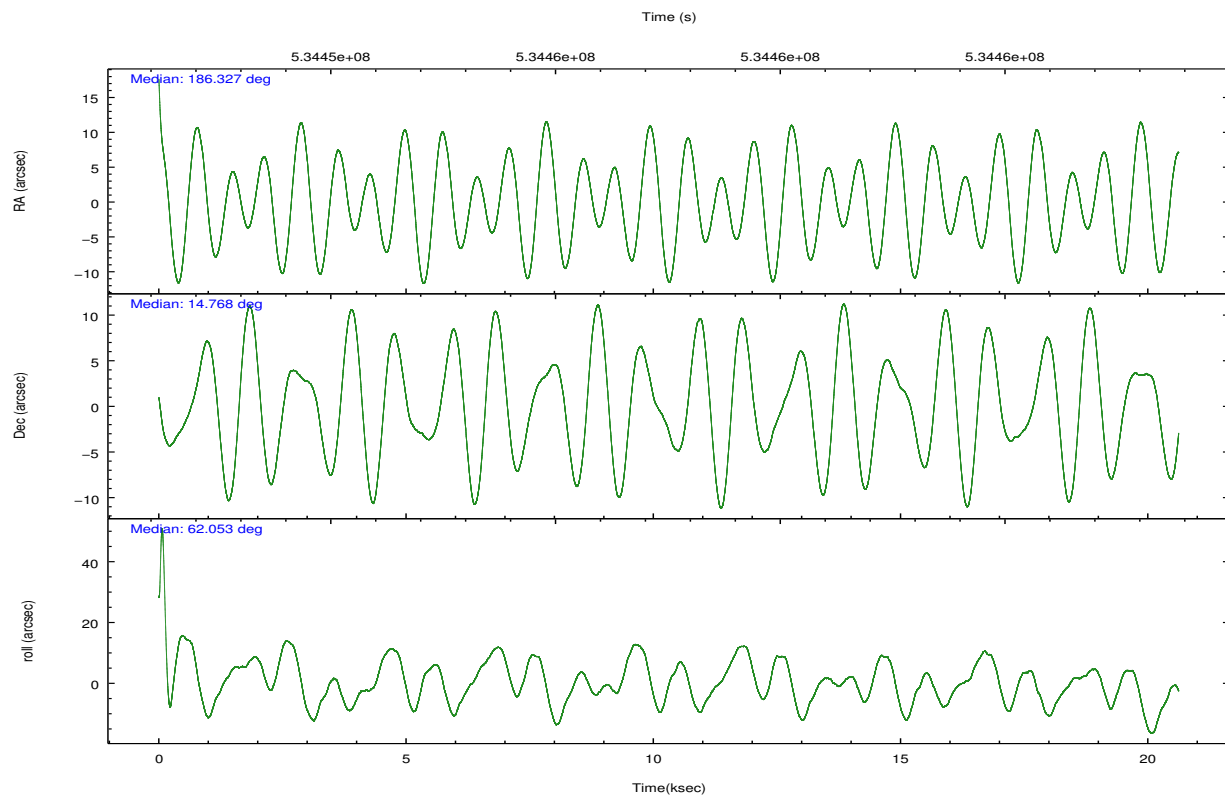
	ccd 6	ccd 7	ccd 8
grade 0 events	4070	4892	10040
	4%	3%	7%
grade 1 events	30	132	64
	0%	0%	0%
grade 2 events	2706	11390	7979
	2%	8%	6%
grade 3 events	1150	4582	3323
	1%	3%	2%
grade 4 events	1102	4476	3196
	1%	3%	2%
grade 5 events	4700	12650	7079
	4%	9%	5%
grade 6 events	2733	30099	9103
	2%	23%	7%
grade 7 events	78726	58787	85470
	82%	46%	67%

2.2 Compared Parameters

Parameter	Planned	Actual	Parameter	Planned	Actual
Instrument	ACIS	ACIS	Obspar format version number	7	7
Detector	ACIS-678	ACIS-678	Obspar file type	PREDICTED	ACTUAL
Grating	NONE	NONE	Obspar update status	NONE	UPDATED
Data mode	VFAINT	VFAINT	CCD I0 on	N	N
Observation mode	POINTING	POINTING	CCD I1 on	N	N
[deg] Pointing RA	186.328237	186.326835747152	CCD I2 on	N	N
[deg] Pointing Dec	14.740614	14.7679947548899	CCD I3 on	N	N
[deg] Pointing Roll	61.907641	62.06460379839658	CCD S0 on	N	N
[mm] SIM focus pos	-0.684267	-0.6828225247311905	CCD S1 on	N	N
[mm] SIM defocus	0	0.001444936568705701	CCD S2 on	O2	Y
[mm] SIM translation stage pos	-190.132523	-190.1400660498719	CCD S3 on	Y	Y
[mm] SIM translation stage offset	0	0.00754346686406393	CCD S4 on	O1	Y
[s] Observation start time (MET)	534447824.184000	534446232.4648	CCD S5 on	N	N
Observation start date	2014-12-08T17:42:37	2014-12-08T17:17:12	Number of optional ACIS chips dropped	0	0
[s] Observation end time (MET)	534467824.184000	534468095.20352	On-chip summing requested	N	N
Observation end date	2014-12-08T23:15:57	2014-12-08T23:21:35	Subarray requested	NONE	NONE
Read mode	TIMED	TIMED	Alternating exposures requested	N	N
			[s] Primary exposure time	0.000000	3.1

2.3 Aspect



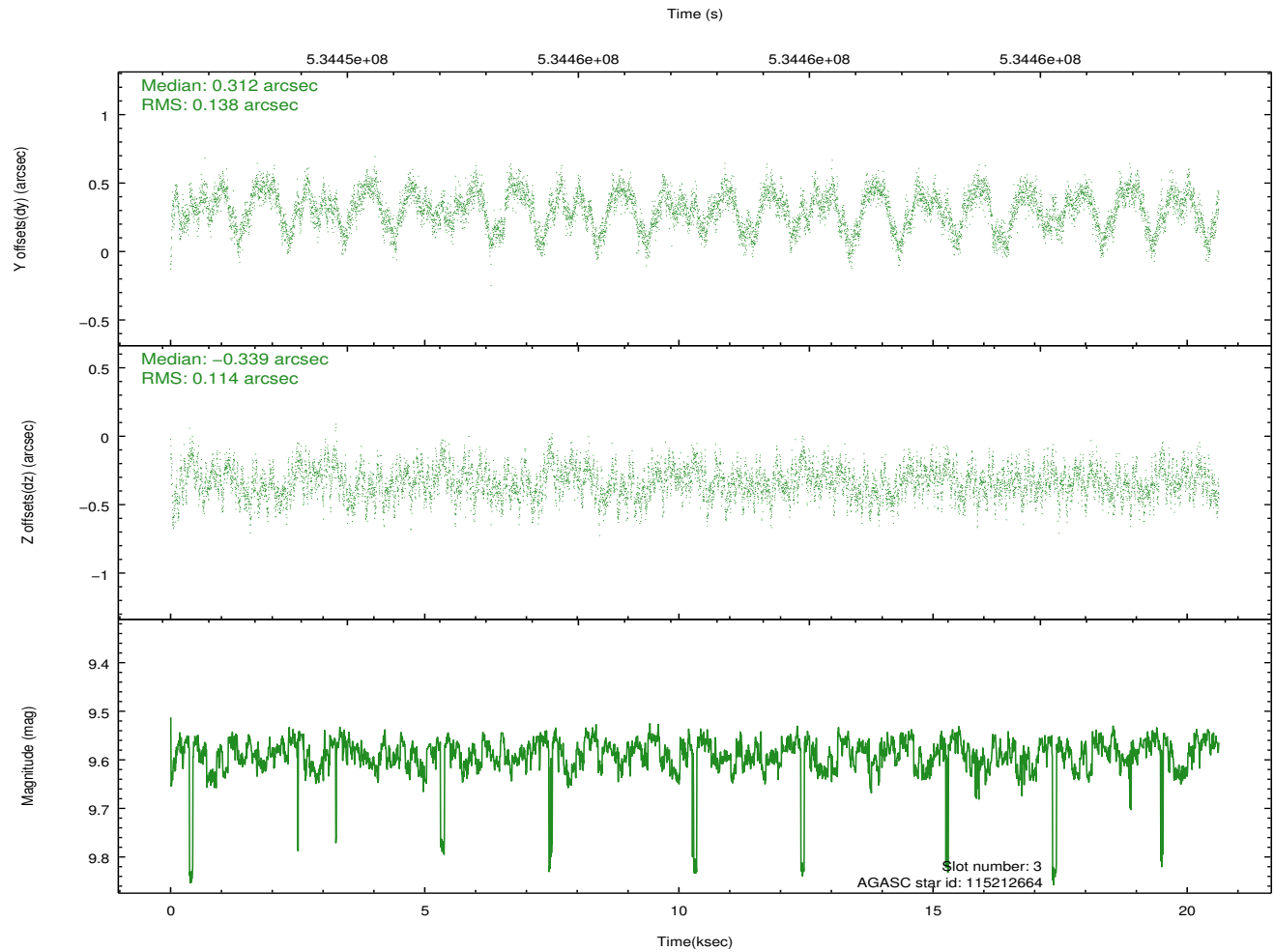
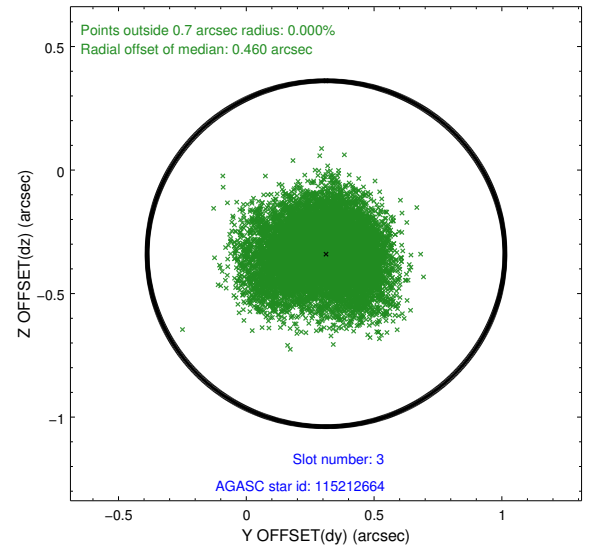
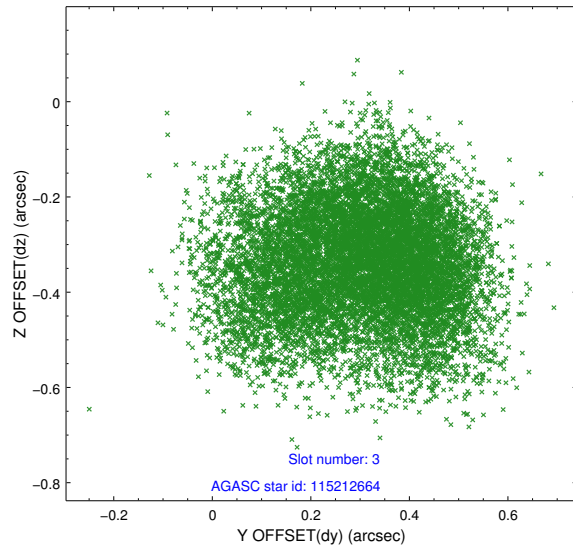


Slot Statistics

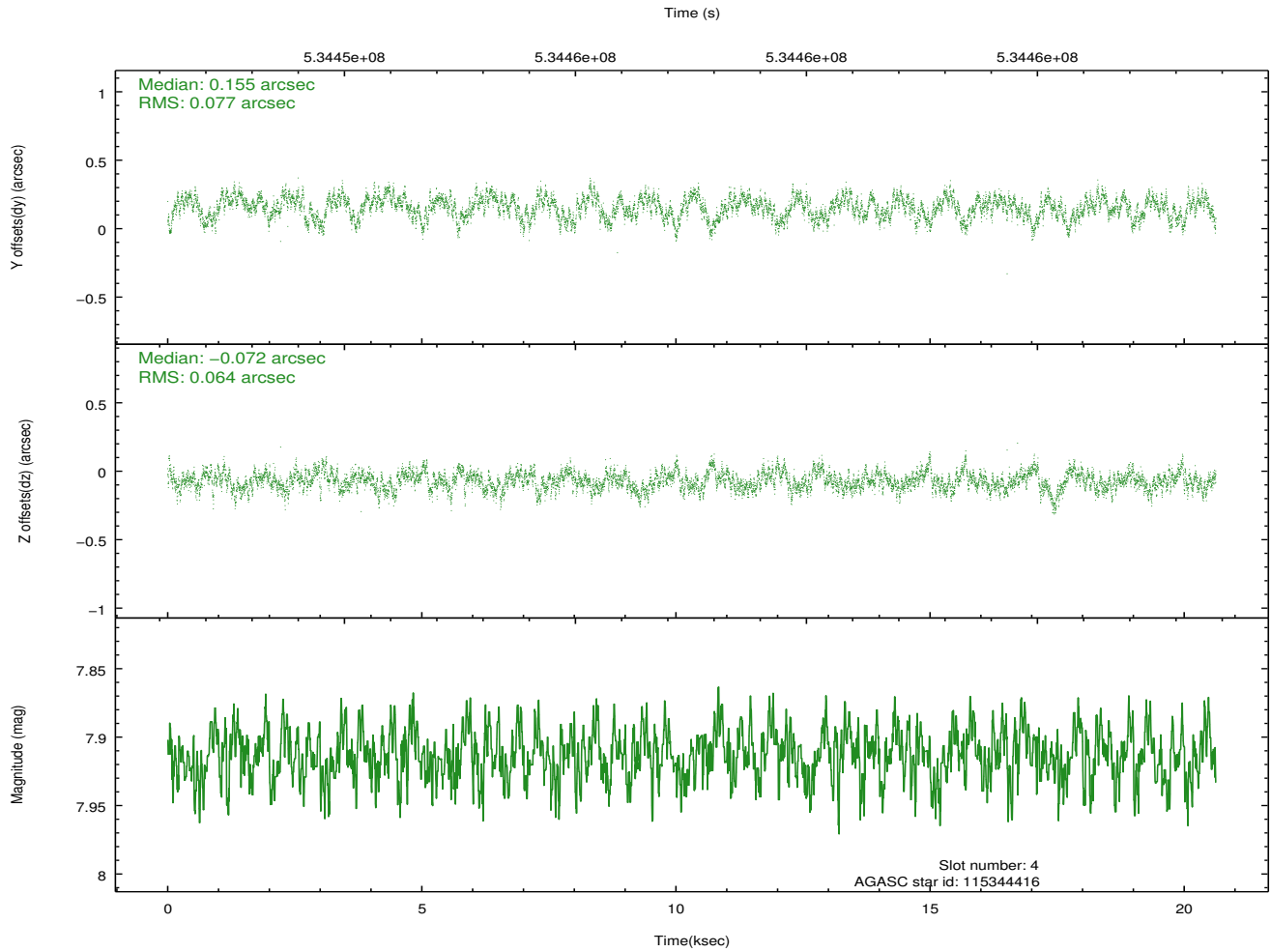
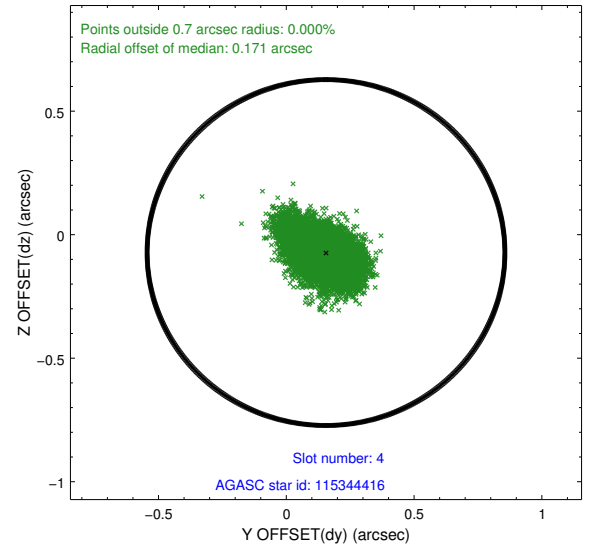
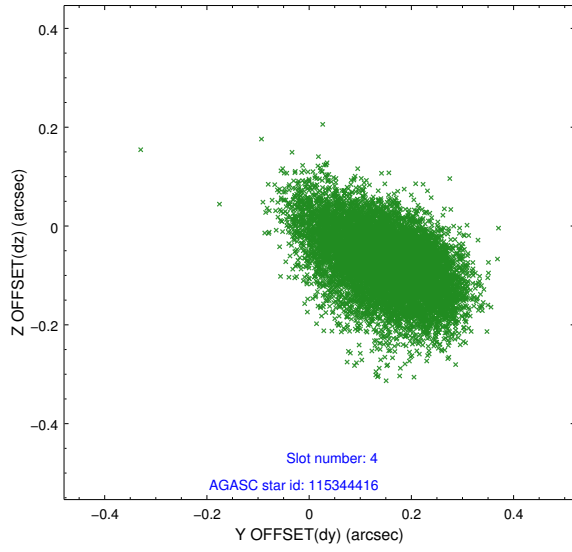
slot	status	used	id	mag	n_pts	med_dy	med_dz	dr1	dr2	ra	dec	mean_y	mean_z
0	FID		ACIS-S-1	7.21	5029	0.074	-0.055	0.022	0.049	0.000000	0.000000	917.19	-1739.14
1	FID		ACIS-S-5	7.25	5031	-0.199	0.029	0.012	0.019	0.000000	0.000000	-1831.99	158.29
2	FID		ACIS-S-6	7.36	5030	0.104	0.038	0.033	0.051	0.000000	0.000000	382.57	802.47
3	GUIDE	used	115212664	9.59	10050	0.312	-0.339	0.194	0.302	186.112214	14.500161	-1118.97	256.52
4	GUIDE	used	115344416	7.91	10060	0.155	-0.072	0.106	0.178	186.624628	14.572004	-48.36	-1195.72
5	GUIDE	used	189399280	9.92	9958	-0.261	-0.661	0.210	0.337	186.536897	15.337958	2238.11	374.13
6	GUIDE	used	189403320	10.00	9676	-0.542	0.600	0.279	0.437	186.650538	15.117423	1725.02	-347.73
7	GUIDE	used	115349328	8.74	10059	0.298	0.465	0.171	0.249	186.721628	14.043786	-1564.38	-2392.31

2.4 Star Slots

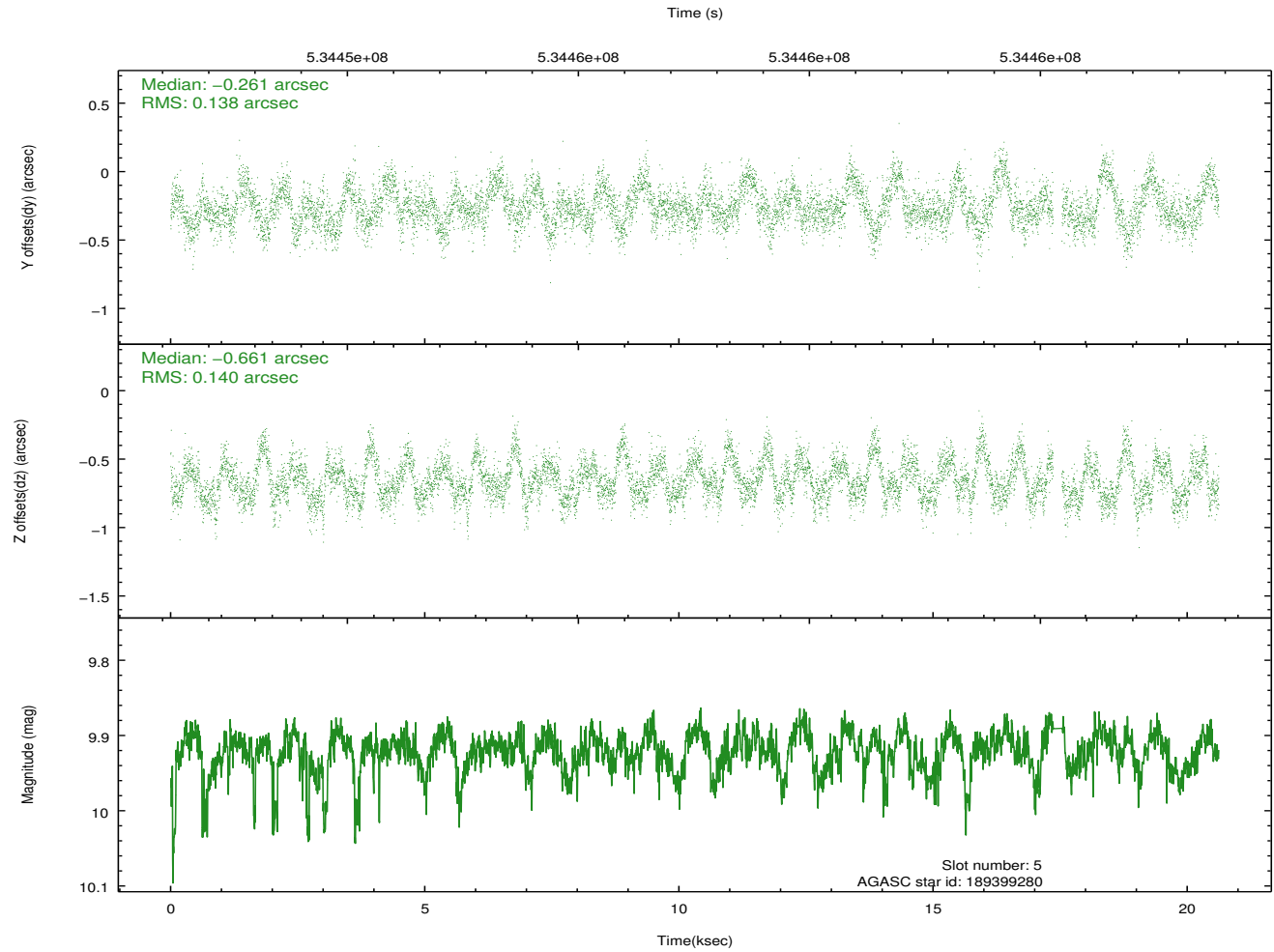
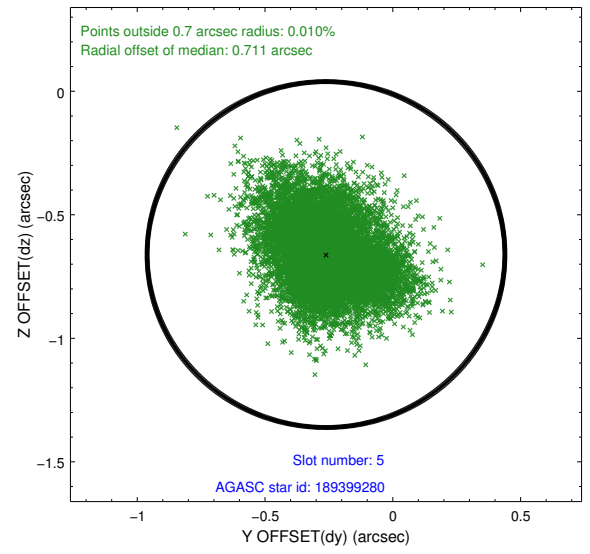
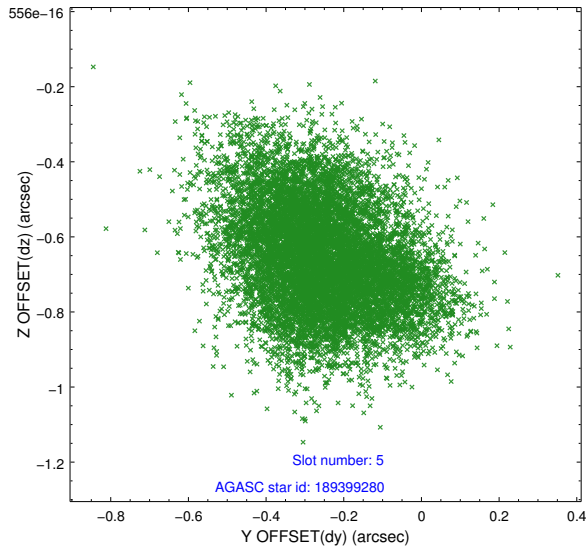
2.4.1 Slot 3



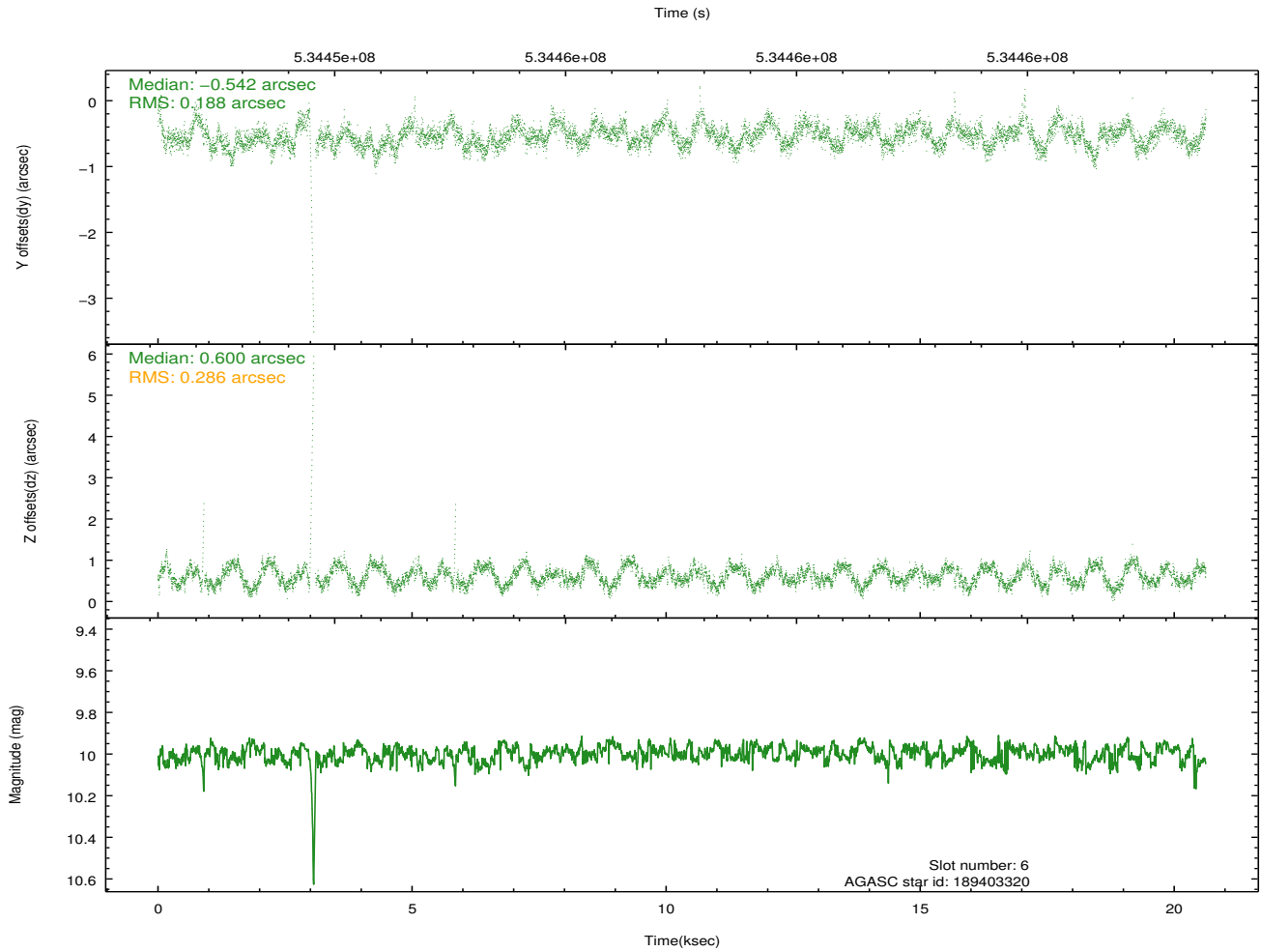
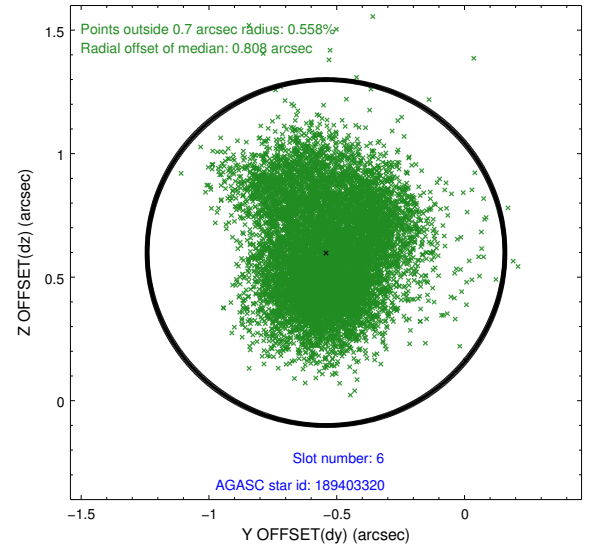
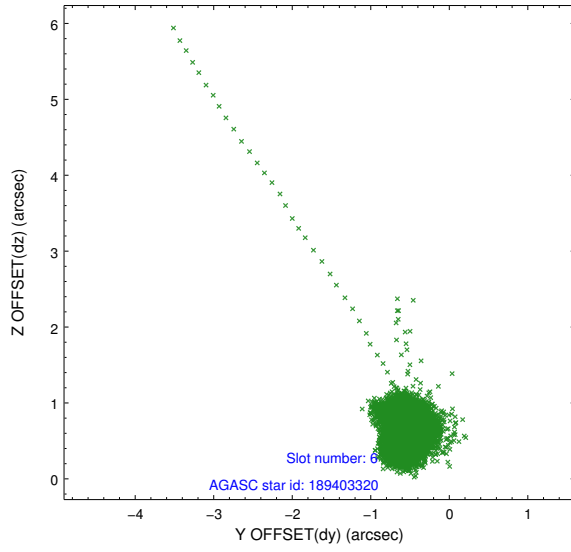
2.4.2 Slot 4



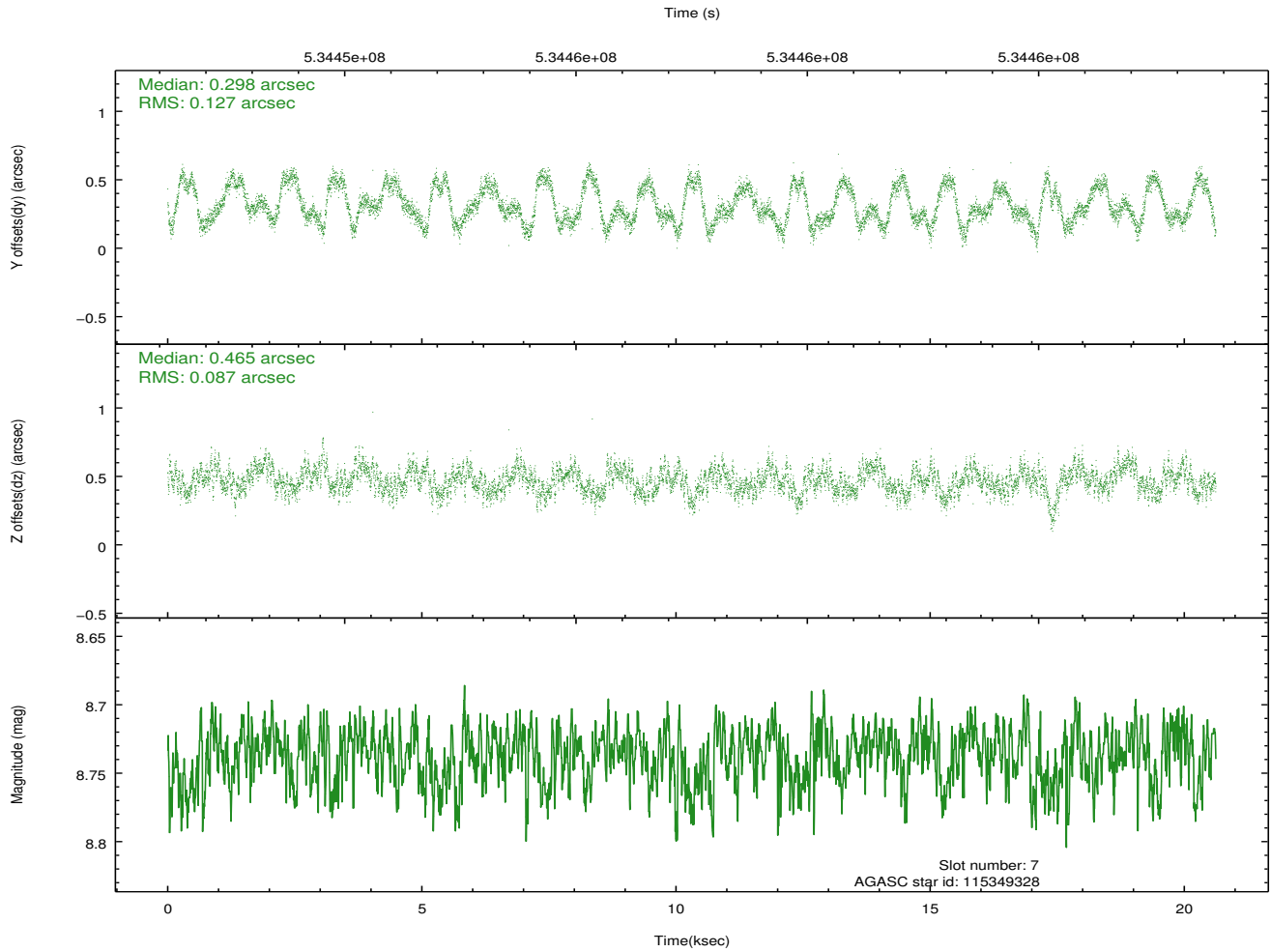
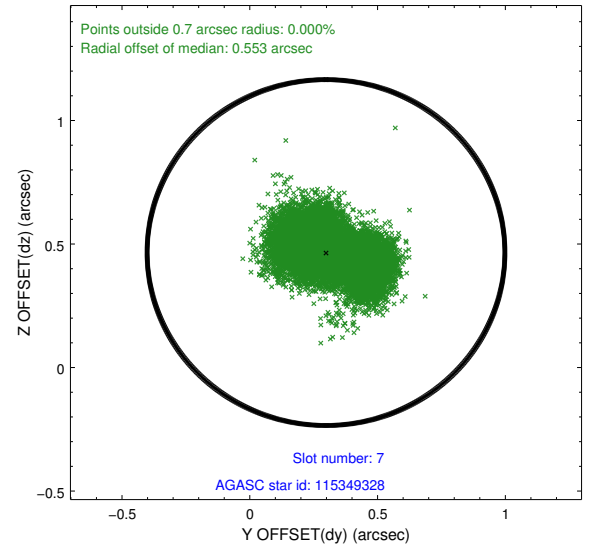
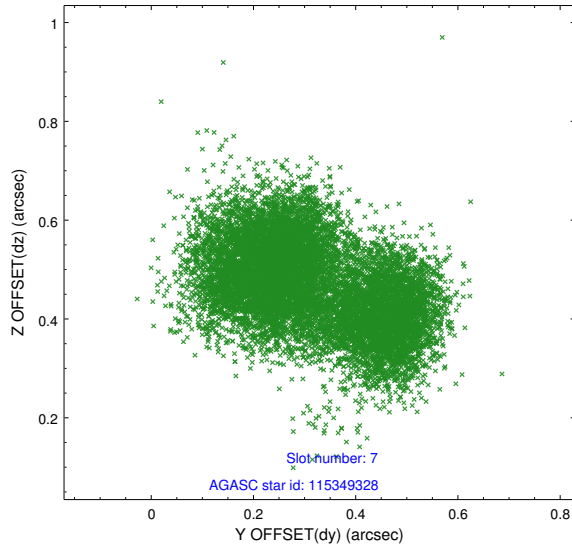
2.4.3 Slot 5



2.4.4 Slot 6

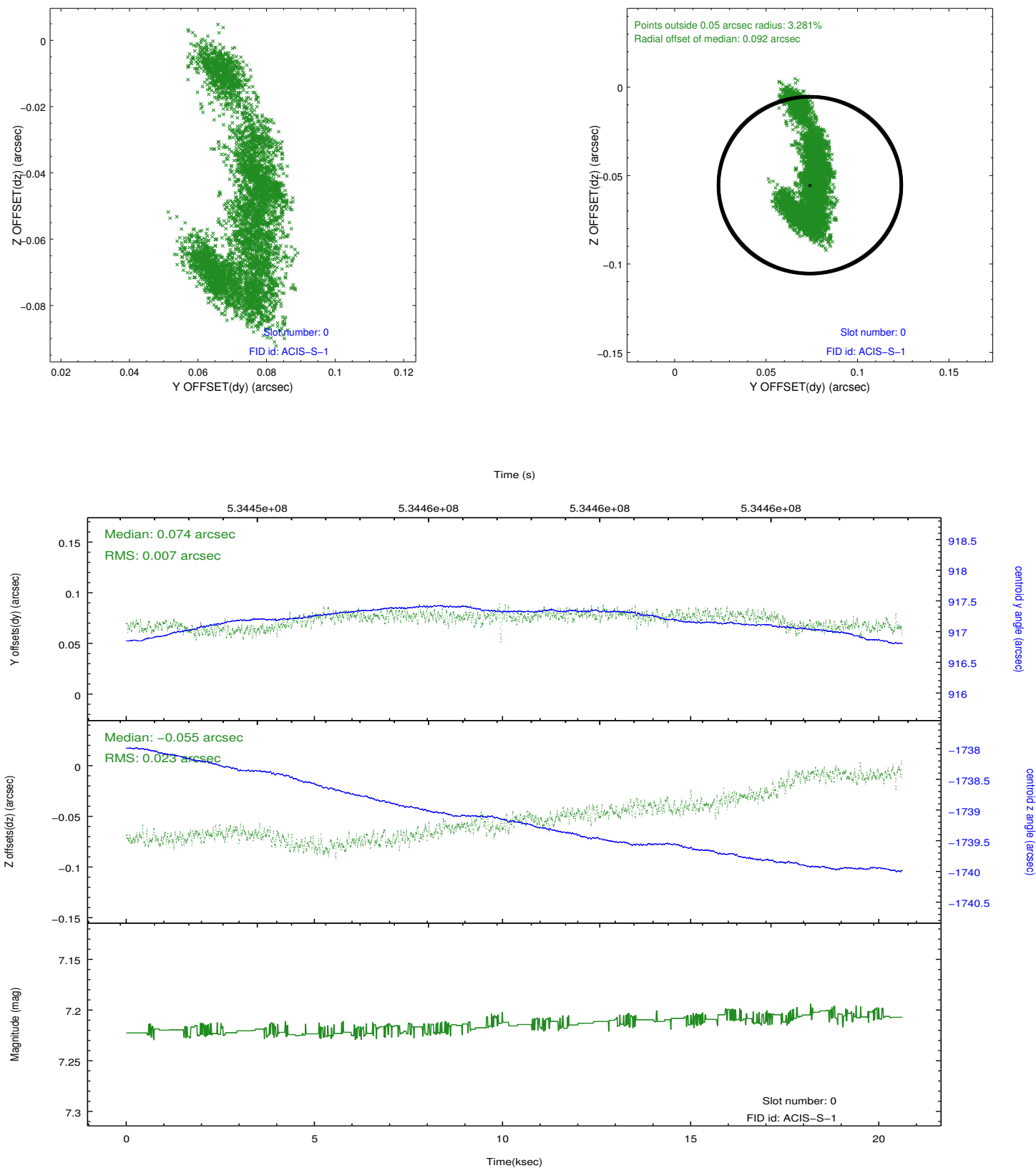


2.4.5 Slot 7

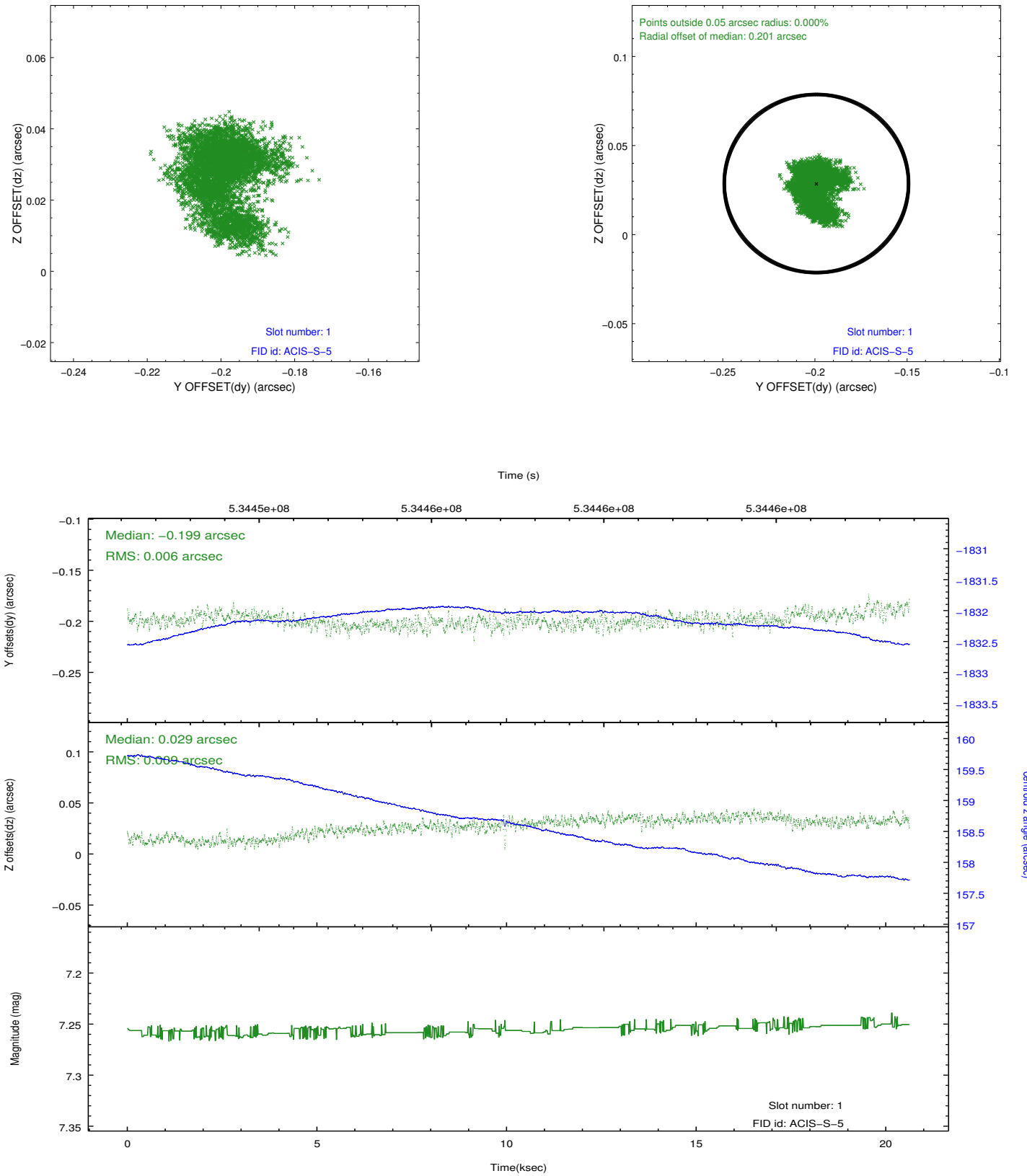


2.5 FID Slots

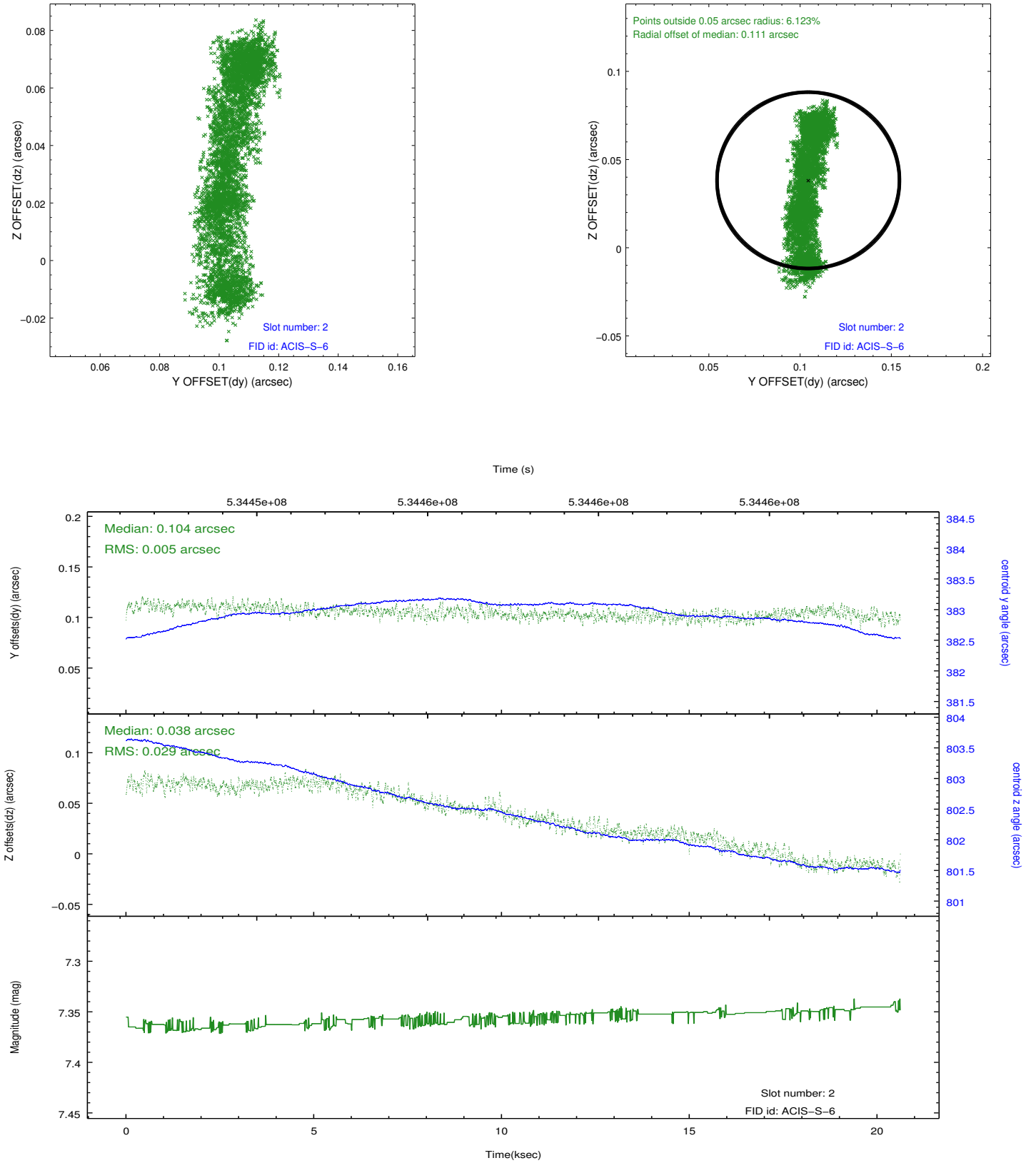
2.5.1 Slot 0



2.5.2 Slot 1



2.5.3 Slot 2



A Summary

A.1 Status

V&V Scientist	Joy Nichols
V&V Date (YYYY-MM-DD)	2014.12.09
V&V Edition	1
V&V Disposition and Status	OK
V&V Charge Time	19.985700153708

A.2 Comments