

V&V Reference Report

L2 ASCDS Version : 10.2.1

Observation 16567 - L2 Version 2
Chandra X-Ray Center

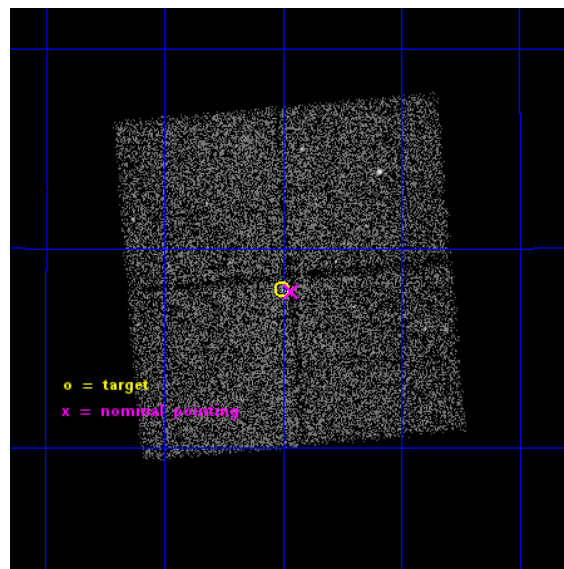
L2 Processing Date : Dec 9 2014

Contents

1	Front	2
2	OBI	3
2.1	OBI	3
2.1.1	Images	3
2.1.2	Bias	3
2.1.3	Parameters	4
2.1.4	Events	4
2.2	Compared Parameters	5
2.3	Aspect	6
2.4	Star Slots	9
2.4.1	Slot 3	9
2.4.2	Slot 4	10
2.4.3	Slot 5	11
2.4.4	Slot 6	12
2.4.5	Slot 7	13
2.5	FID Slots	14
2.5.1	Slot 0	14
2.5.2	Slot 1	15
2.5.3	Slot 2	16
A	Summary	17
A.1	Status	17
A.2	Comments	17

1 Front

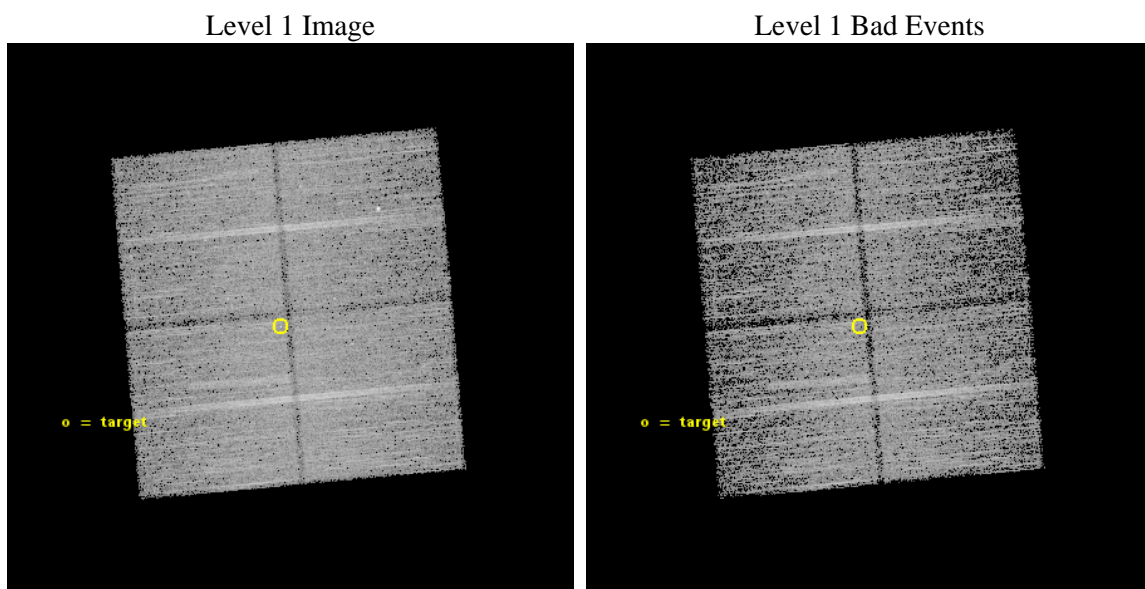
seq_num	901022	Sequence number
obs_id	16567	Observation id
title	Far-infrared powered Inverse Compton halos around high-redshift radio galaxies	Proposal title
observer	Professor Ian Smail	Principal investigator
object	B2 0902+34	Source name
dtcycle	0	
cycle	P	events from which exps? Prim/Second/Both
ra_targ	136.375417	Observer's specified target RA [deg]
dec_targ	34.1325	Observer's specified target Dec [deg]
ra_nom	136.36590541459	Nominal RA [deg]
dec_nom	34.130776120609	Nominal Dec [deg]
roll_nom	174.92931431303	Nominal Roll [deg]
revision	2	Processing version of data
ontime	23386.359139502	Sum of GTIs [s]
livetime	23080.799140557	Livetime [s]
ontime0	23389.500179887	Sum of GTIs [s]
ontime1	23386.359139562	Sum of GTIs [s]
ontime2	23389.500179887	Sum of GTIs [s]
ontime3	23386.359139502	Sum of GTIs [s]
l2events	40624	Number of level 2 events



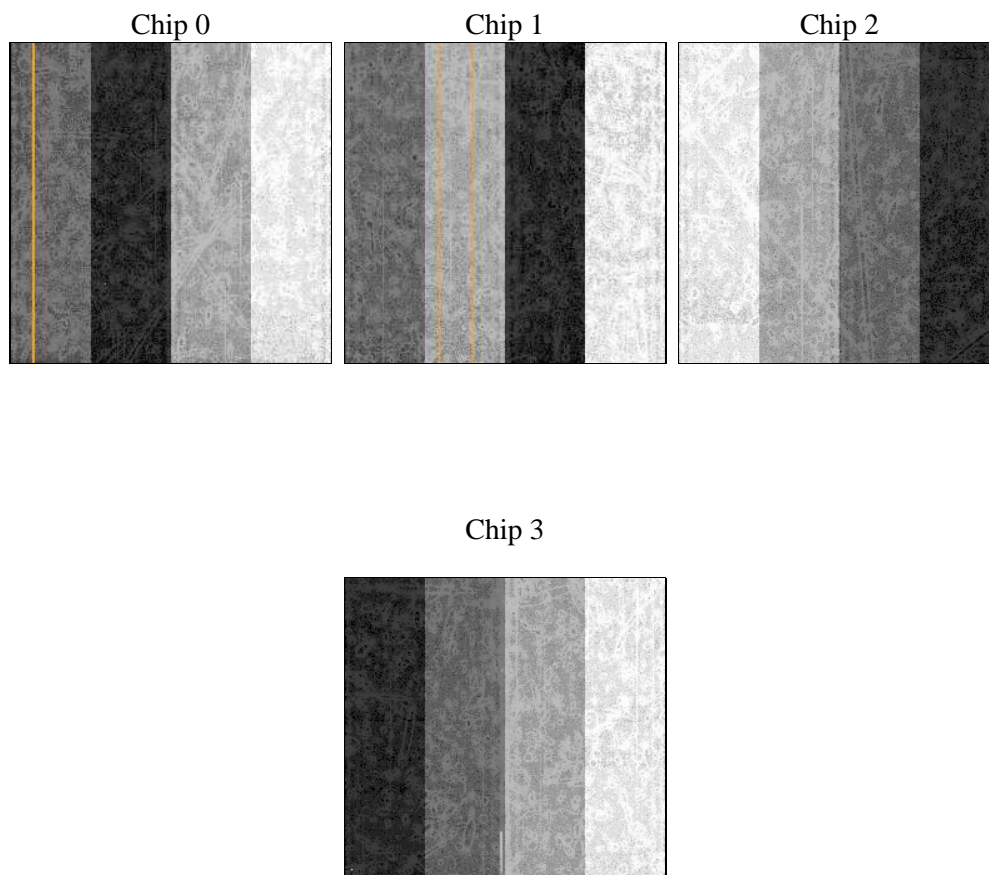
2 OBI

2.1 OBI

2.1.1 Images



2.1.2 Bias



2.1.3 Parameters

obi_num	0	Obi number	sched_exp_time	23300.673000	[s] Scheduled observation exposure time
ascdsver	10.3.1	Processing system revision	ontime	23386.359139502	Sum of GTIs [s]
caldsver	4.6.4	 	ontime0	23389.500179887	Sum of GTIs [s]
date	2014-12-10T03:28:11	Date and time of file creation	ontime1	23386.359139562	Sum of GTIs [s]
revision	2	Processing version of data	ontime2	23389.500179887	Sum of GTIs [s]
			ontime3	23386.359139502	Sum of GTIs [s]
			l1events	392935	Number of level 1 events

2.1.4 Events

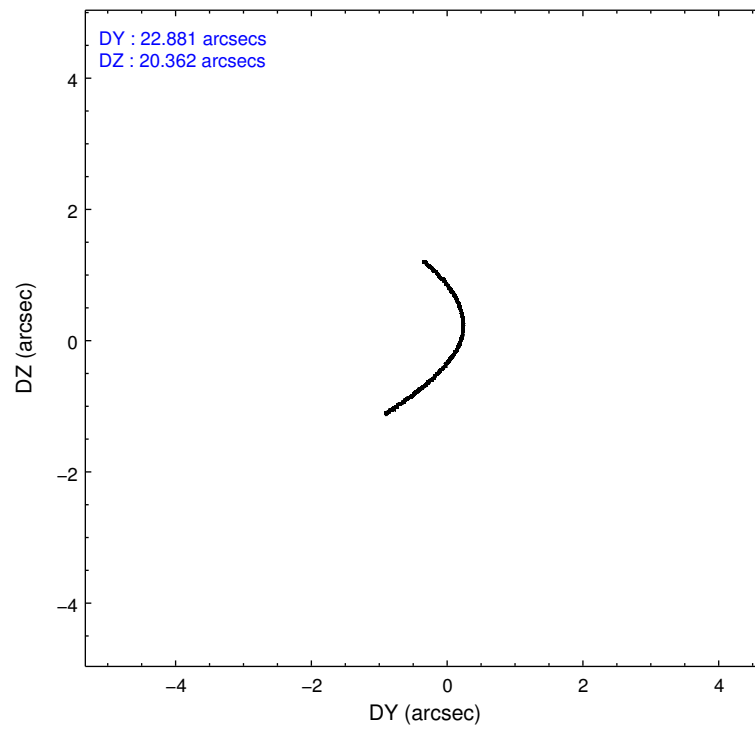
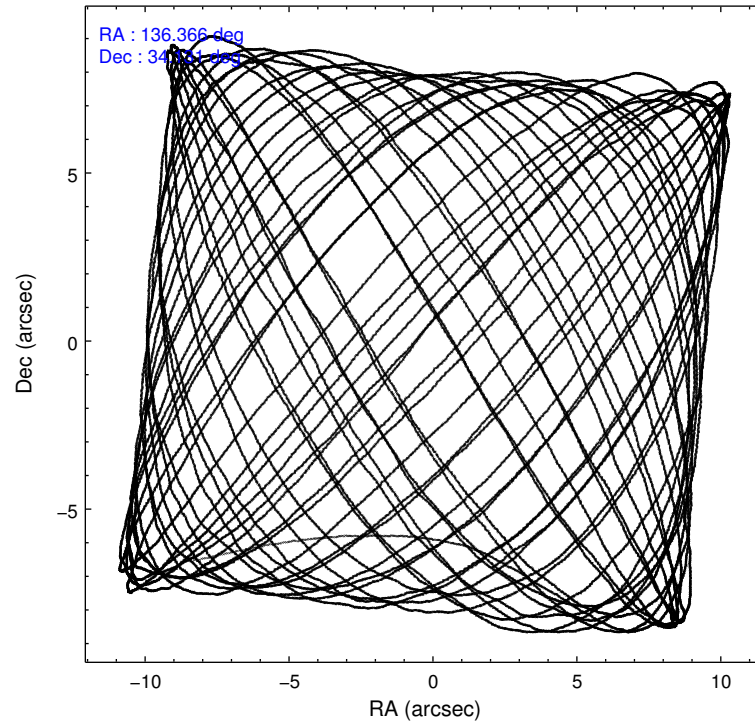
	ccd 0	ccd 1	ccd 2	ccd 3
level 1 events	89566	93808	106052	103509
rejected events	76620	81260	94128	91781
rejected %	85%	86%	88%	88%

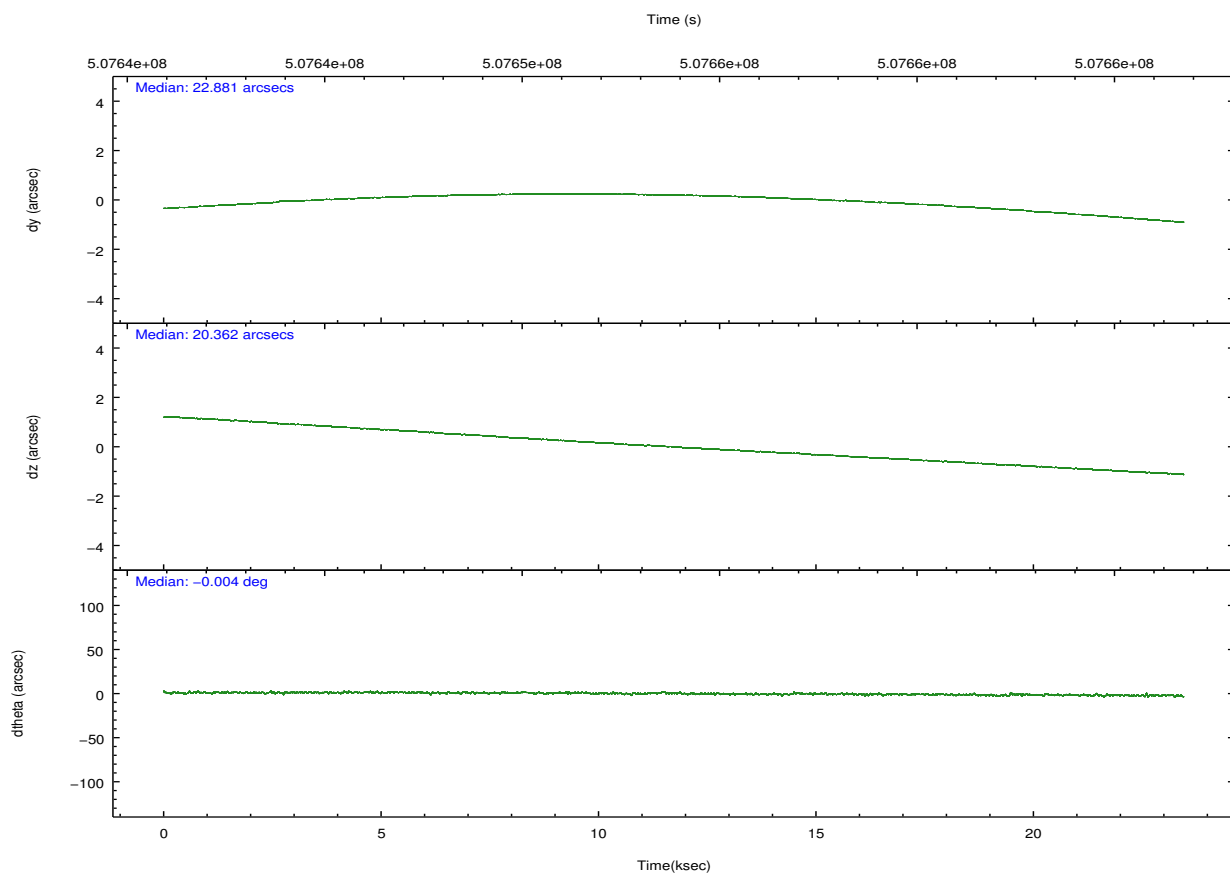
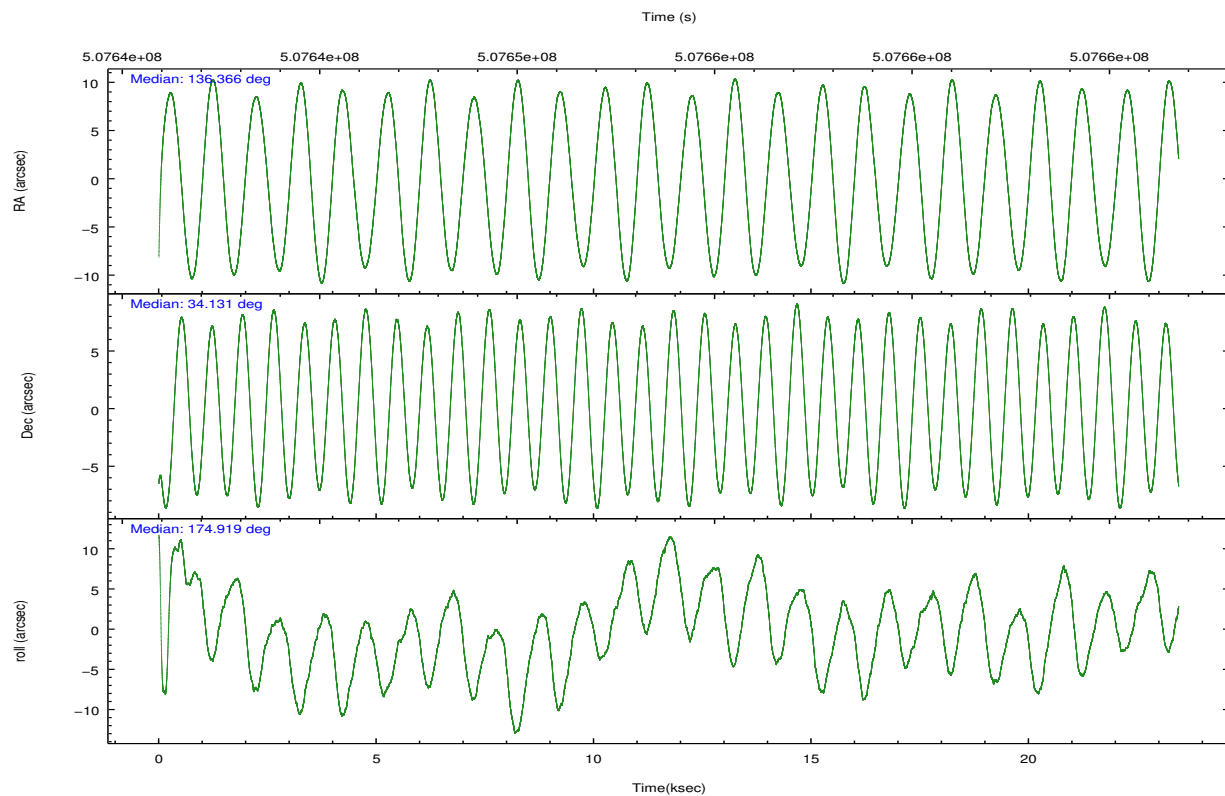
	ccd 0	ccd 1	ccd 2	ccd 3
grade 0 events	4915	4247	4231	4192
	5%	4%	3%	4%
grade 1 events	65	54	52	46
	0%	0%	0%	0%
grade 2 events	3063	3033	3048	2617
	3%	3%	2%	2%
grade 3 events	1242	1258	1162	1234
	1%	1%	1%	1%
grade 4 events	1264	1288	1240	1249
	1%	1%	1%	1%
grade 5 events	4250	4451	3892	4795
	4%	4%	3%	4%
grade 6 events	2465	2723	2245	2438
	2%	2%	2%	2%
grade 7 events	72302	76754	90182	86938
	80%	81%	85%	83%

2.2 Compared Parameters

Parameter	Planned	Actual	Parameter	Planned	Actual
Instrument	ACIS	ACIS	Obspar format version number	7	7
Detector	ACIS-0123	ACIS-0123	Obspar file type	PREDICTED	ACTUAL
Grating	NONE	NONE	Obspar update status	NONE	UPDATED
Data mode	VFAINT	VFAINT	Number of optional ACIS chips dropped	0	0
Observation mode	POINTING	POINTING	On-chip summing requested	N	N
[deg] Pointing RA	136.395939	136.3659054145912	Subarray requested	NONE	NONE
[deg] Pointing Dec	34.142470	34.130776120609	Alternating exposures requested	N	N
[deg] Pointing Roll	174.703768	174.9293143130301	[s] Primary exposure time	0.000000	3.1
[mm] SIM focus pos	-0.782348	-0.7809083437167272			
[mm] SIM defocus	0	0.001439871863259334			
[mm] SIM translation stage pos	-233.592463	-233.5874344608287			
[mm] SIM translation stage offset	0	-0.005018542100998502			
[s] Observation start time (MET)	507642266.184000	507641053.15602			
Observation start date	2014-02-01T11:43:19	2014-02-01T11:24:13			
[s] Observation end time (MET)	507665567.184000	507665803.83238			
Observation end date	2014-02-01T18:11:40	2014-02-01T18:16:43			
Read mode	TIMED	TIMED			

2.3 Aspect



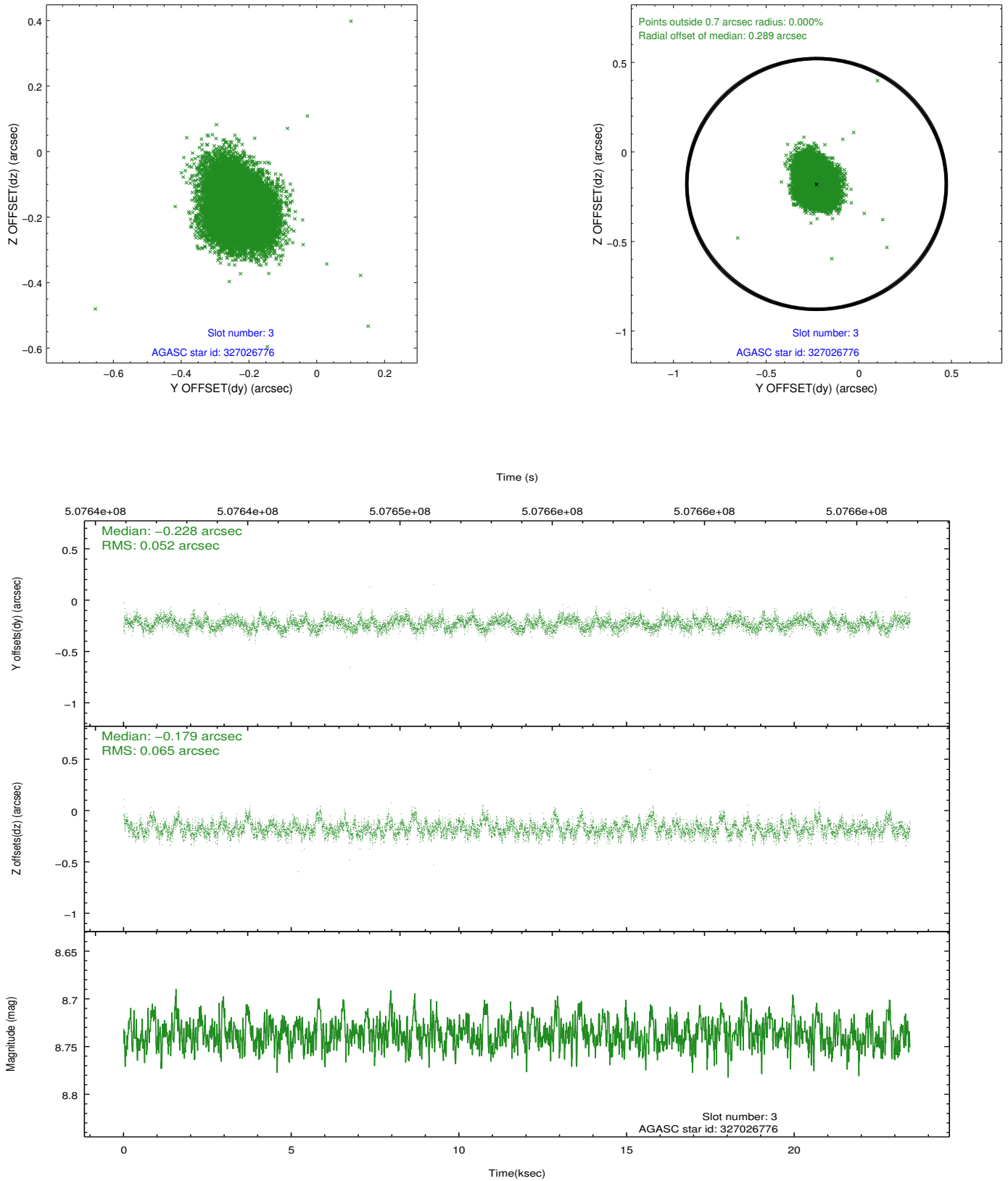


Slot Statistics

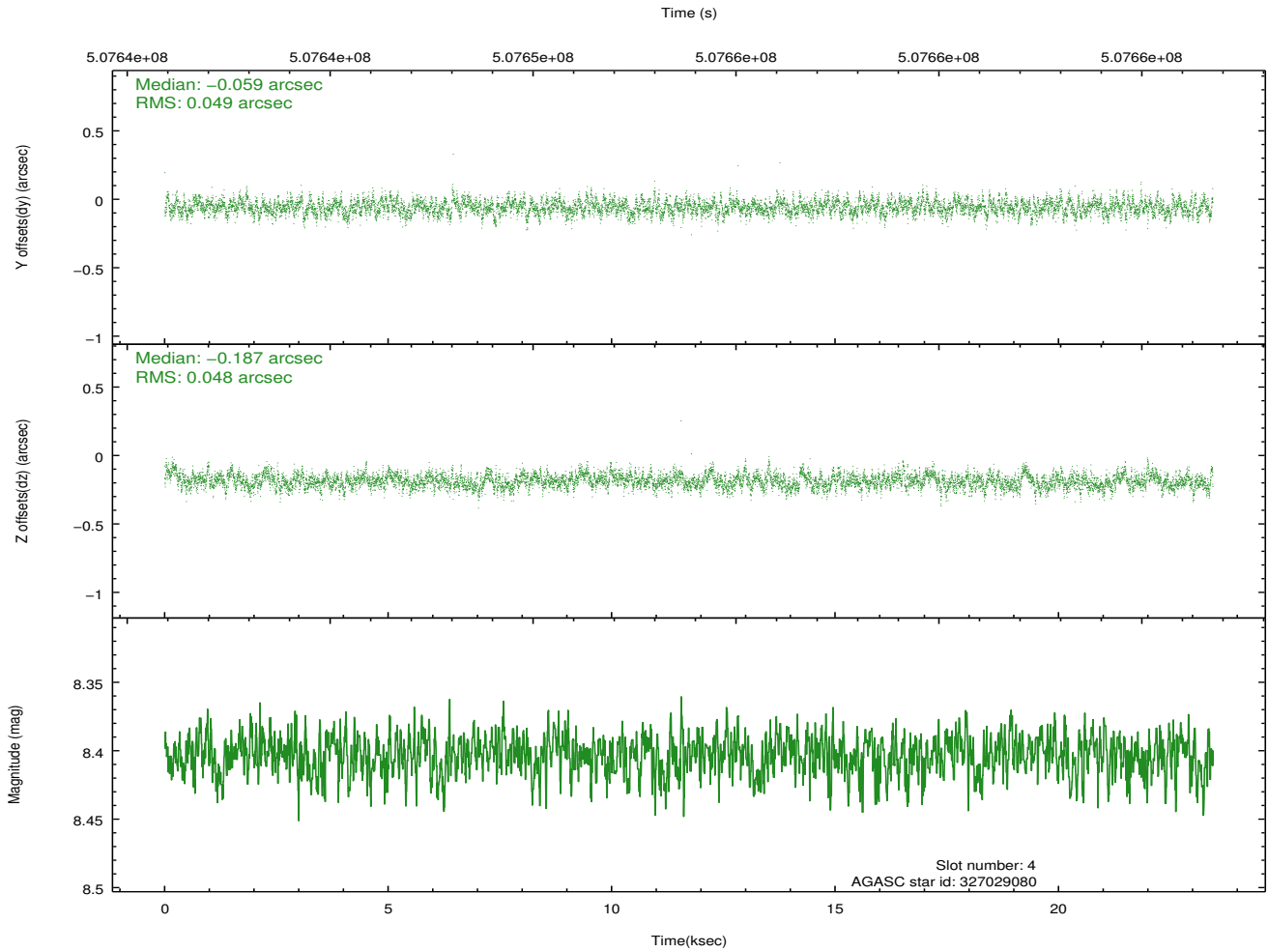
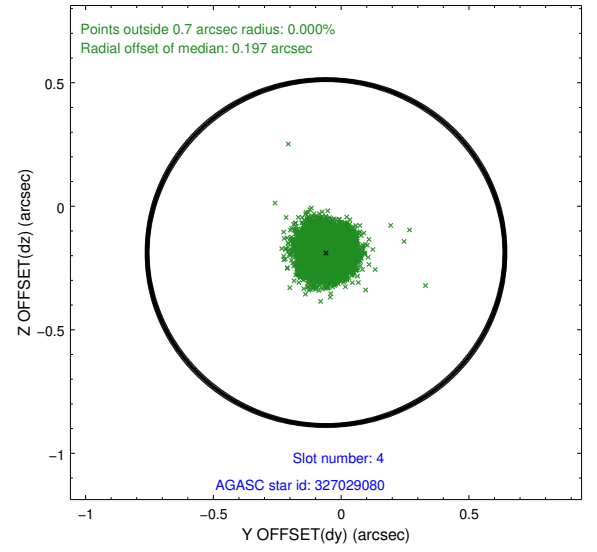
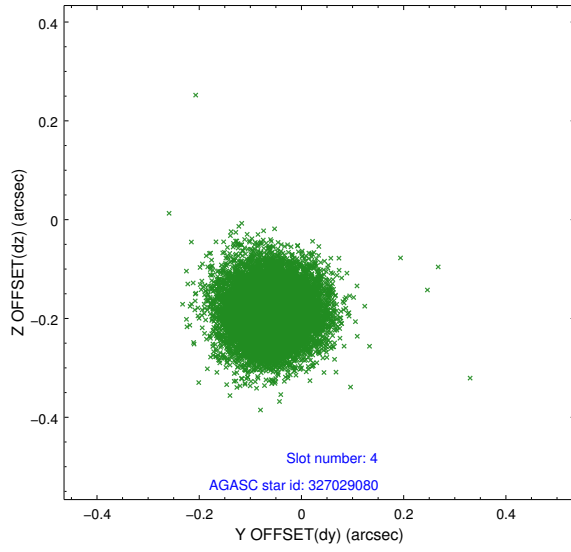
slot	status	used	id	mag	n_pts	med_dy	med_dz	dr1	dr2	ra	dec	mean_y	mean_z
0	FID		ACIS-I-2	6.99	5719	-0.130	-0.087	0.016	0.025	0.000000	0.000000	-777.82	-850.59
1	FID		ACIS-I-4	7.03	5720	0.323	0.097	0.011	0.018	0.000000	0.000000	2136.57	1055.78
2	FID		ACIS-I-5	7.08	5719	-0.294	0.059	0.012	0.019	0.000000	0.000000	-1831.70	1053.62
3	GUIDE	used	327026776	8.74	11433	-0.228	-0.179	0.087	0.144	136.193240	34.587601	746.70	-1540.41
4	GUIDE	used	327029080	8.40	11435	-0.059	-0.187	0.073	0.117	136.078040	34.539830	1071.85	-1338.44
5	GUIDE	used	327029704	9.03	11433	0.209	0.006	0.109	0.177	136.726389	34.530128	-845.86	-1481.52
6	GUIDE	used	327032080	9.11	11429	-0.041	0.318	0.125	0.195	136.187340	34.400970	703.45	-869.34
7	GUIDE	used	327027240	9.29	11429	0.121	0.042	0.150	0.241	136.433809	34.766793	97.02	-2247.94

2.4 Star Slots

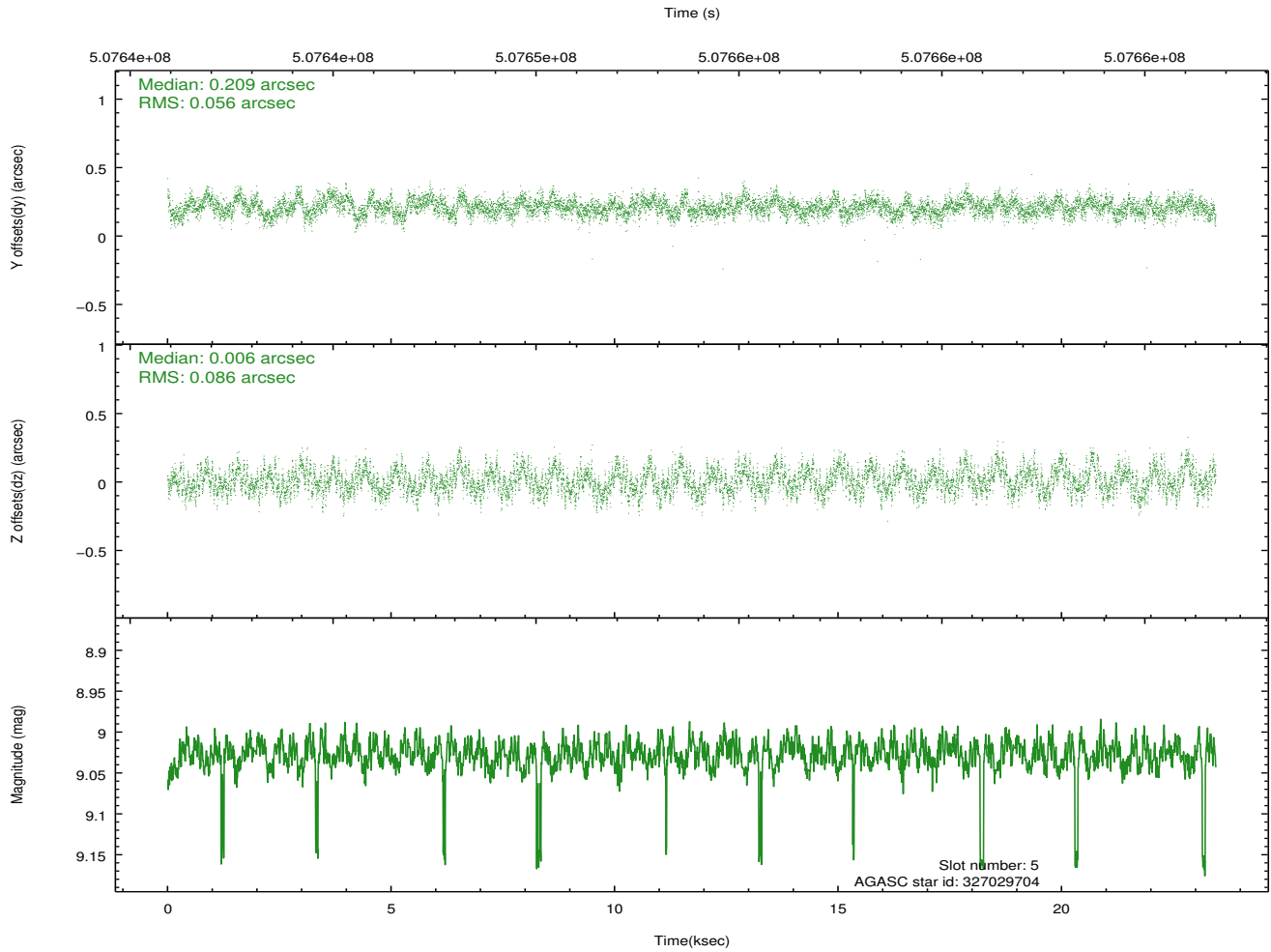
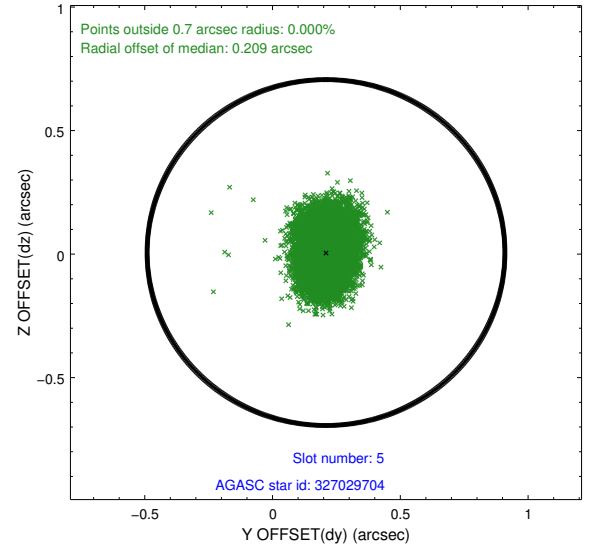
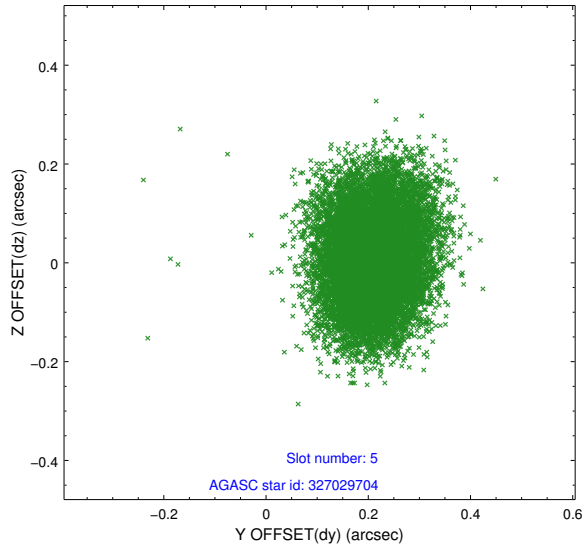
2.4.1 Slot 3



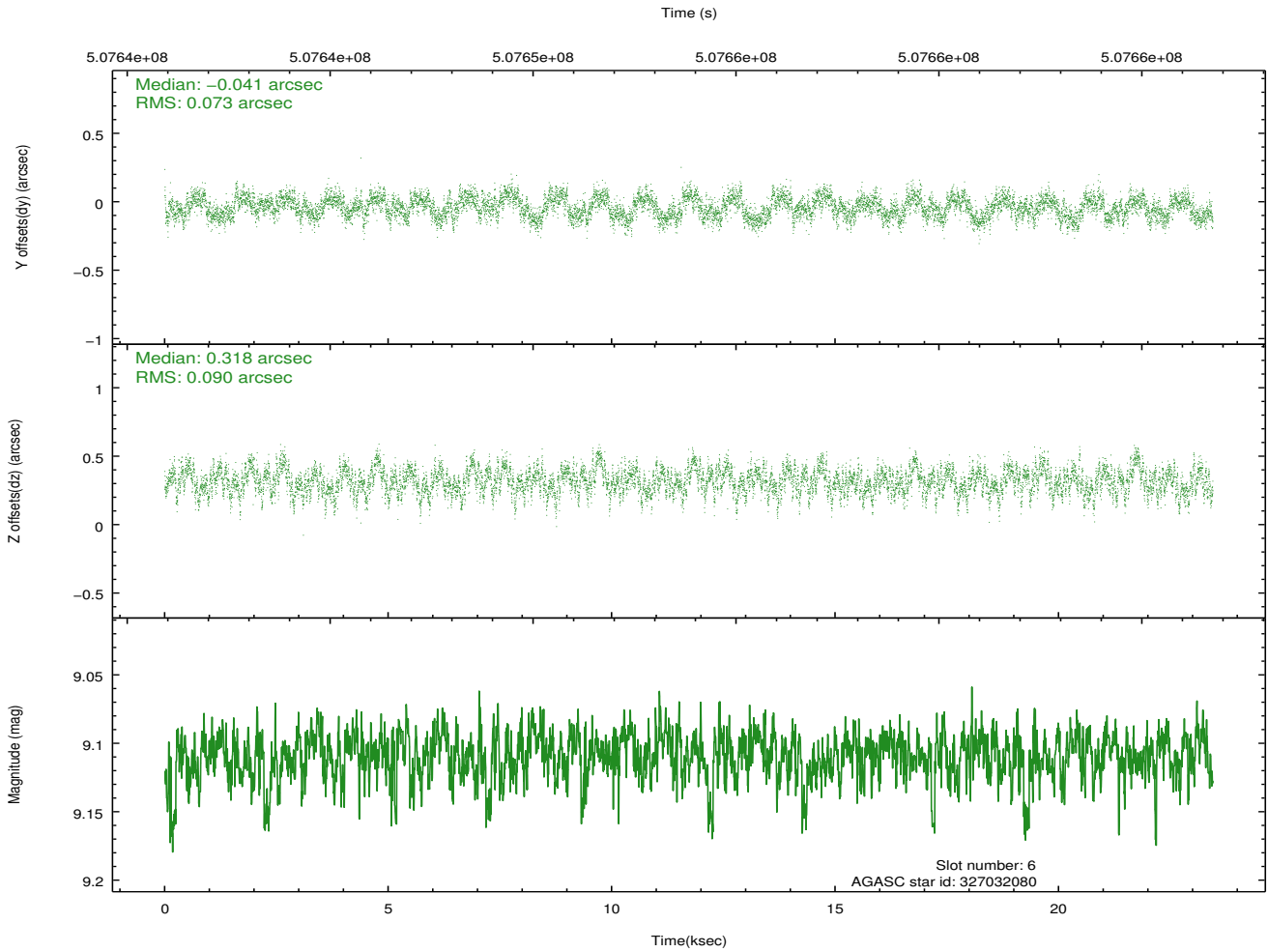
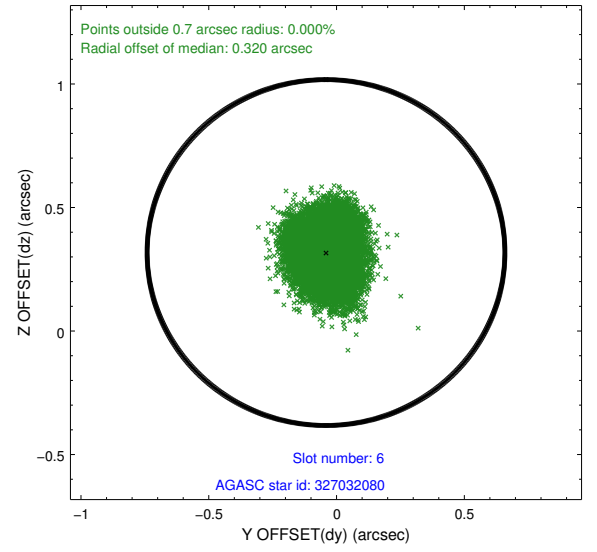
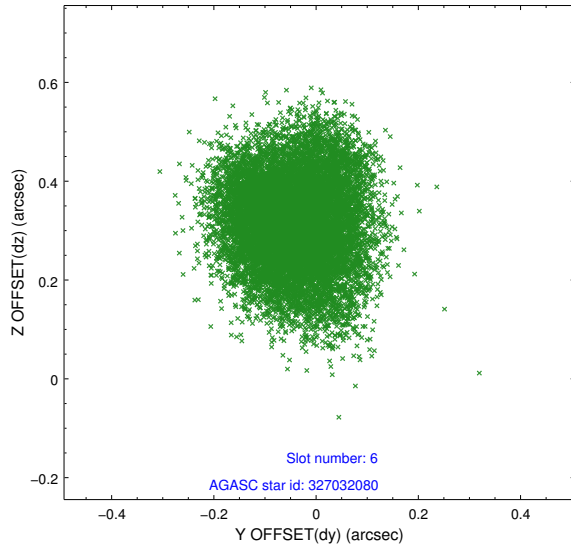
2.4.2 Slot 4



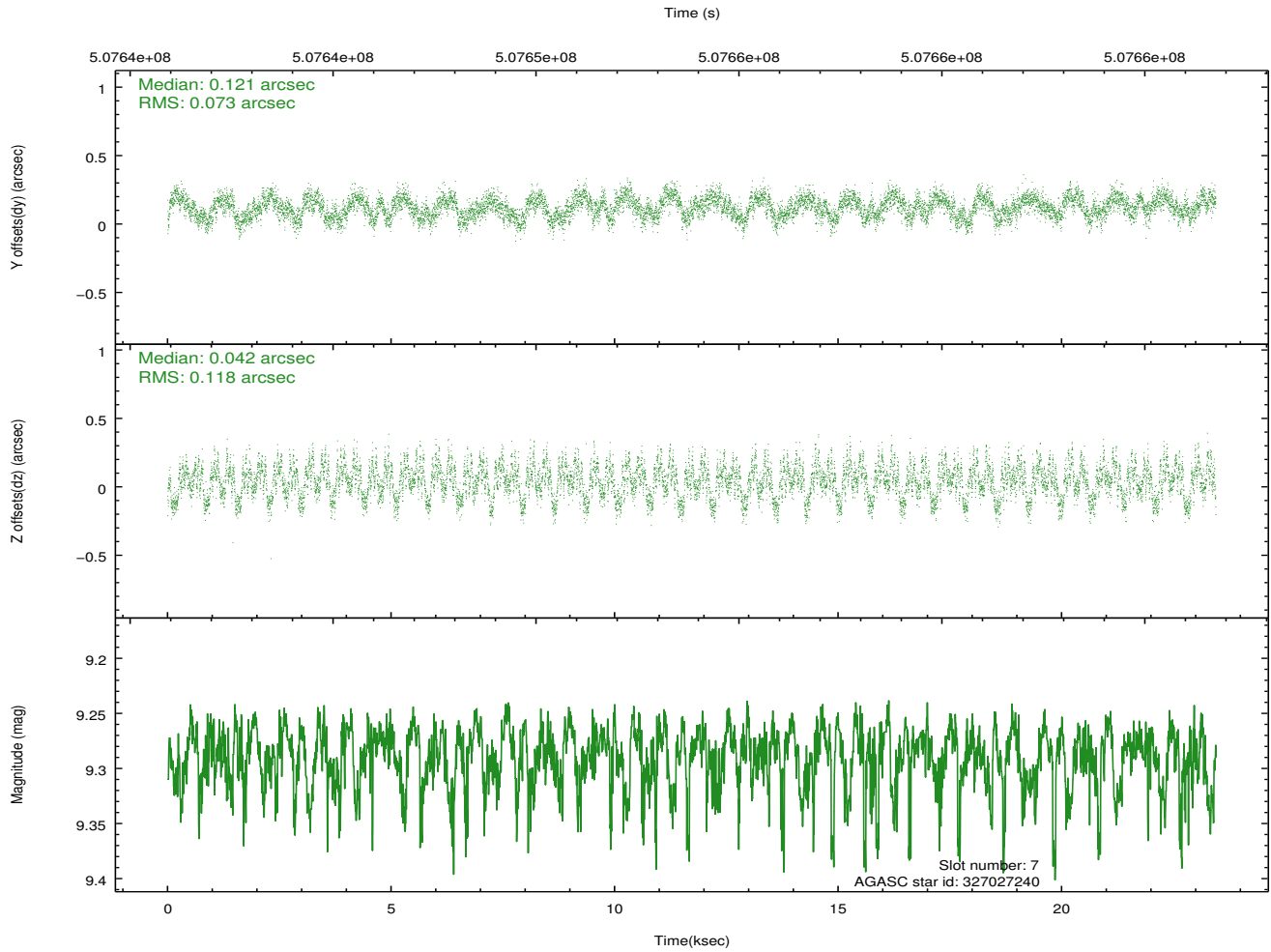
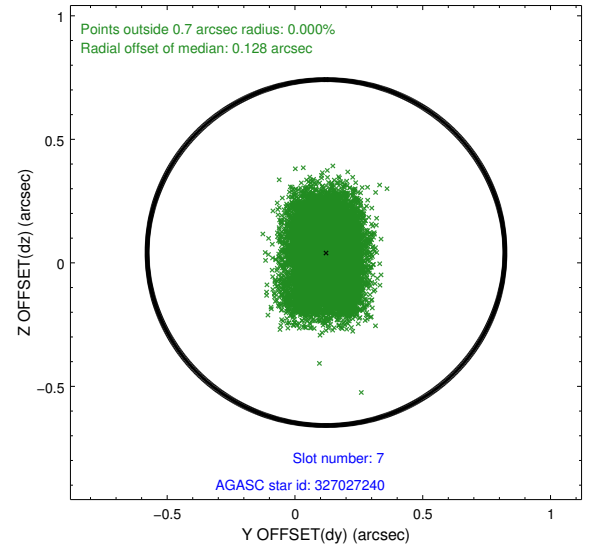
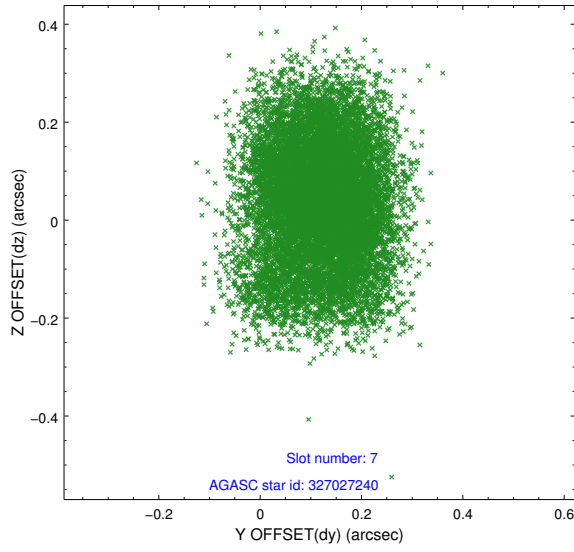
2.4.3 Slot 5



2.4.4 Slot 6

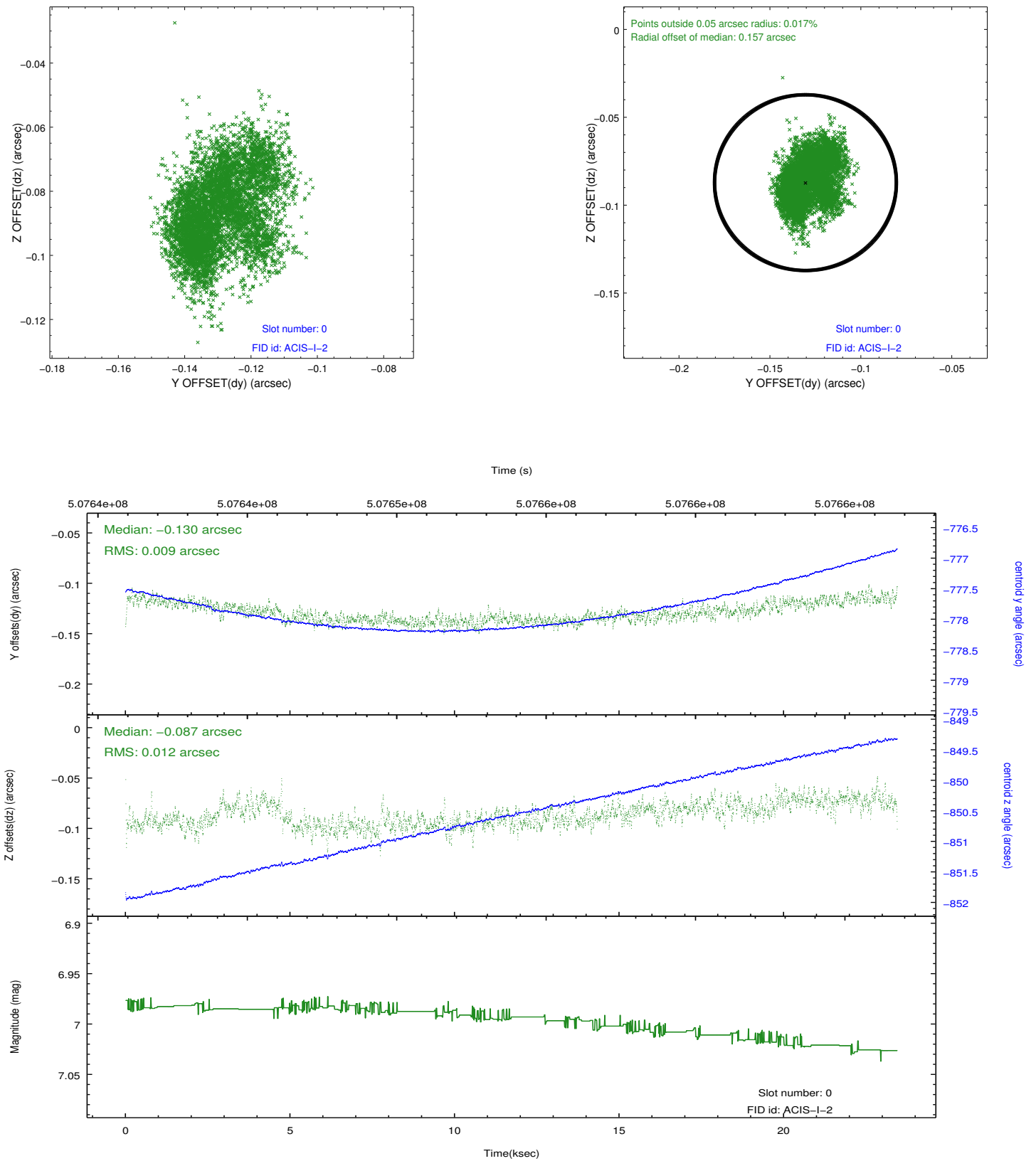


2.4.5 Slot 7

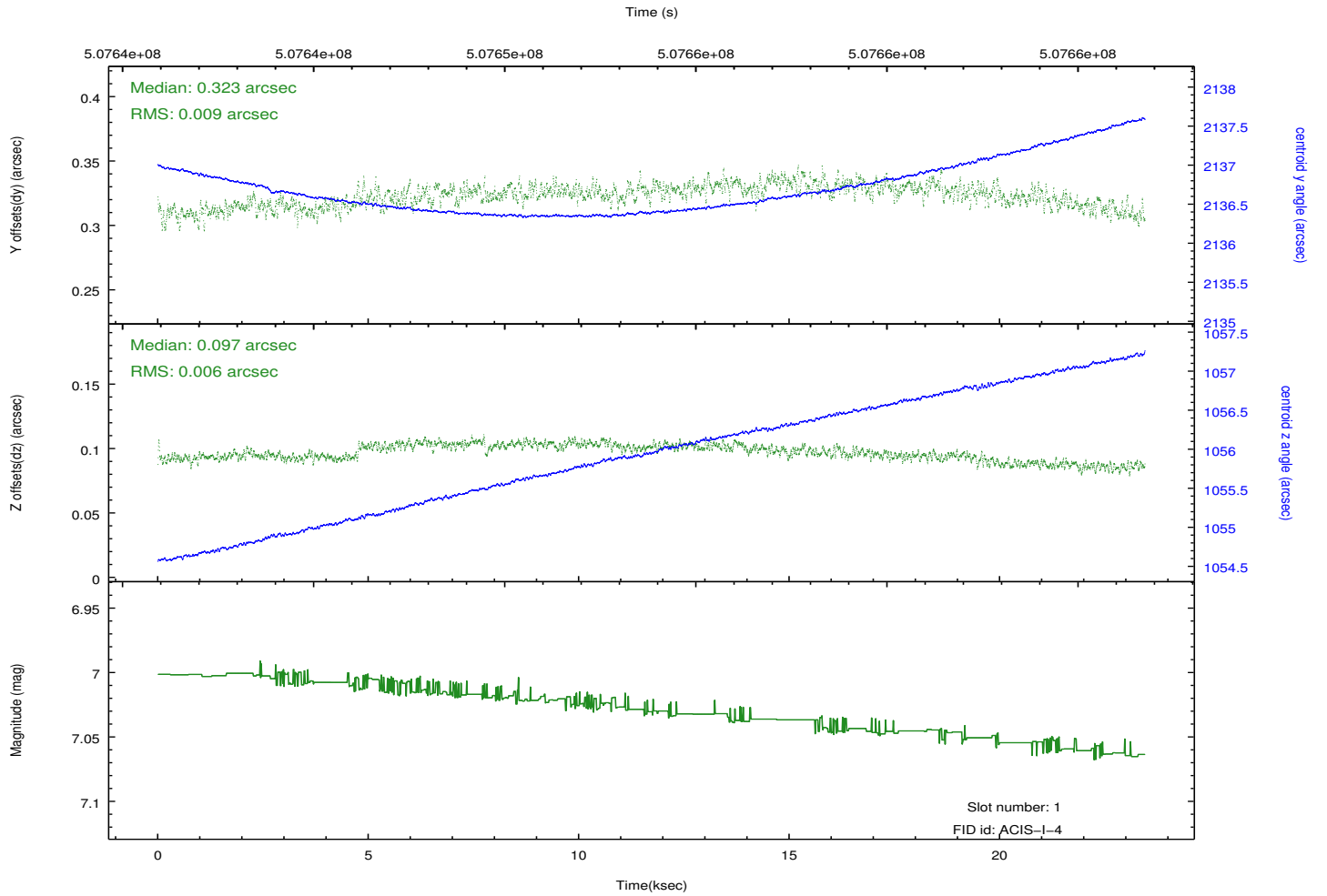
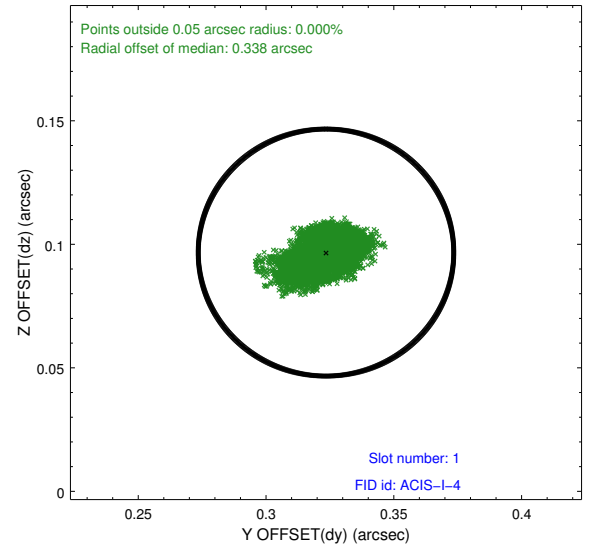
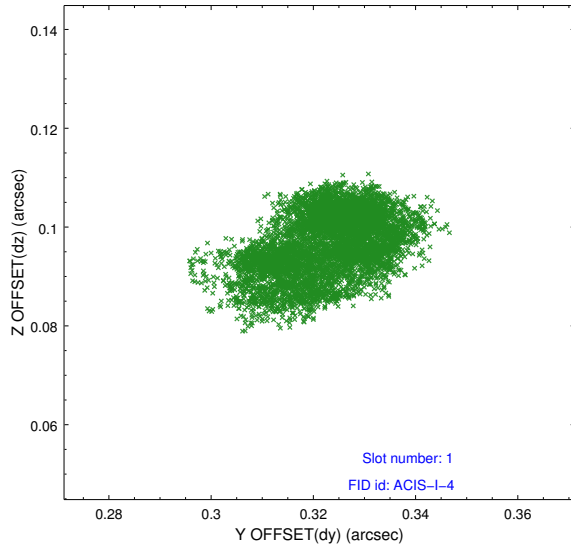


2.5 FID Slots

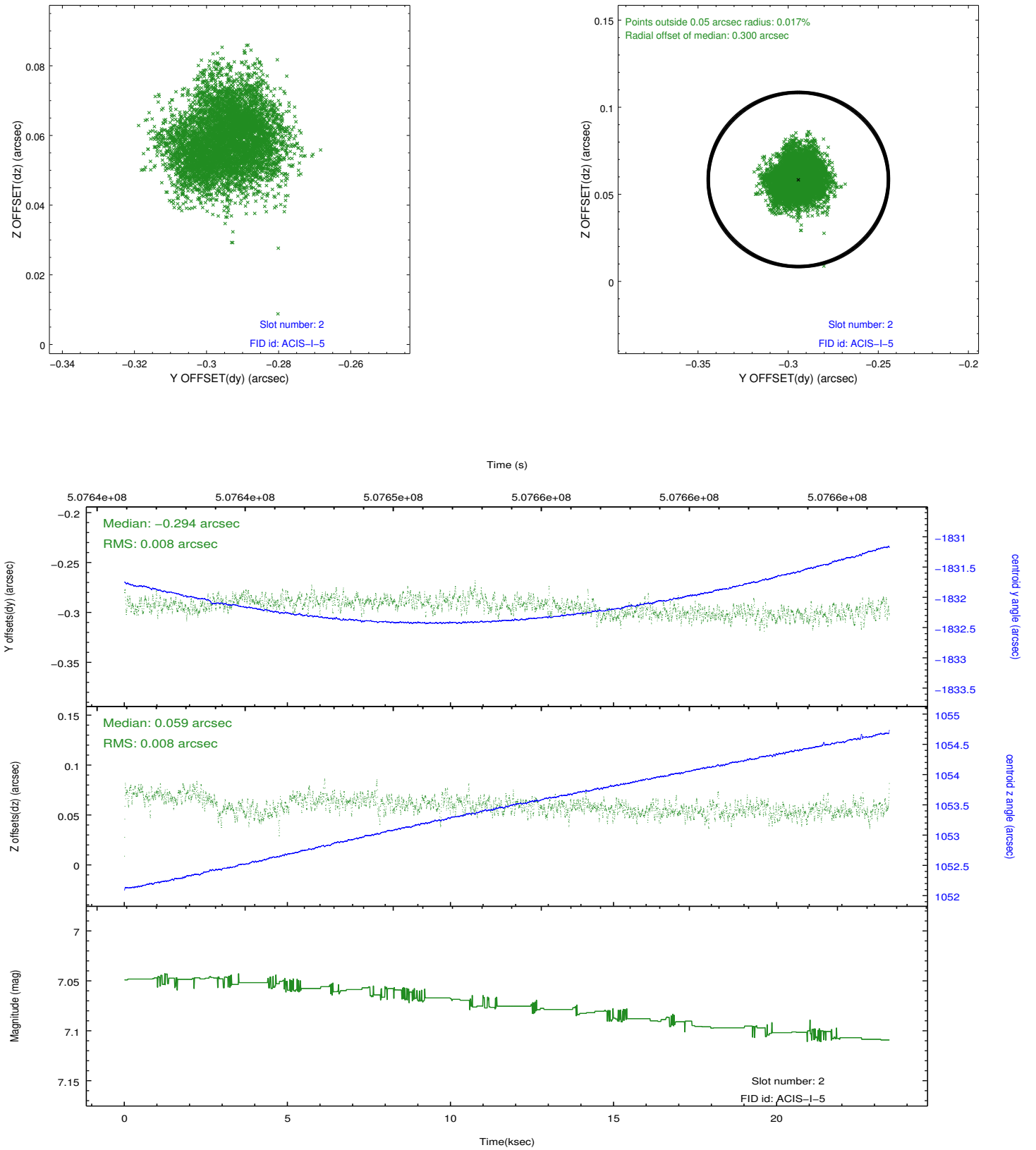
2.5.1 Slot 0



2.5.2 Slot 1



2.5.3 Slot 2



A Summary

A.1 Status

V&V Scientist	Jen Lauer
V&V Date (YYYY-MM-DD)	2014.12.17
V&V Edition	1
V&V Disposition and Status	OK
V&V Charge Time	23.386359139502

A.2 Comments

These data have been reprocessed with new aspect alignment calibration files that correct small mean offsets (up to 0.4 arcsecs) and improve overall astrometric accuracy. The new calibration was determined using data from the time period being reprocessed and was performed using cross-correlation of X-ray sources with radio and optical counterparts.