

V&V Reference Report

L2 ASCDS Version : 8.5.1.1

Observation 15199 - L2 Version 2
Chandra X-Ray Center

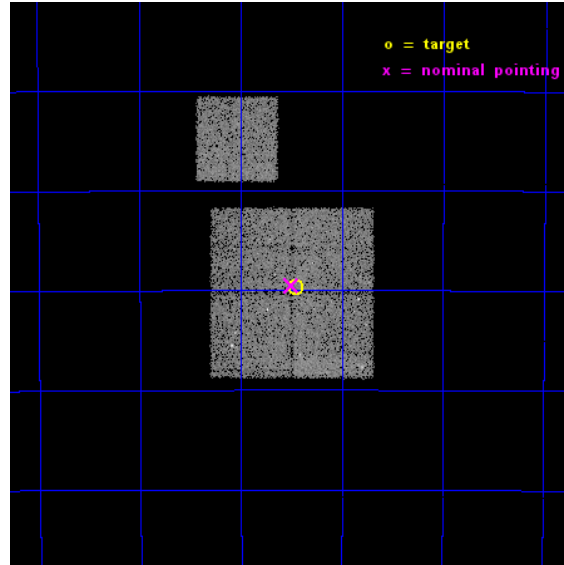
L2 Processing Date : Dec 2 2014

Contents

1	Front	2
2	OBI	3
2.1	OBI	3
2.1.1	Images	3
2.1.2	Bias	3
2.1.3	Parameters	4
2.1.4	Events	4
2.2	Compared Parameters	5
2.3	Aspect	6
2.4	Star Slots	9
2.4.1	Slot 3	9
2.4.2	Slot 4	10
2.4.3	Slot 5	11
2.4.4	Slot 6	12
2.4.5	Slot 7	13
2.5	FID Slots	14
2.5.1	Slot 0	14
2.5.2	Slot 1	15
2.5.3	Slot 2	16
A	Summary	17
A.1	Status	17
A.2	Comments	17

1 Front

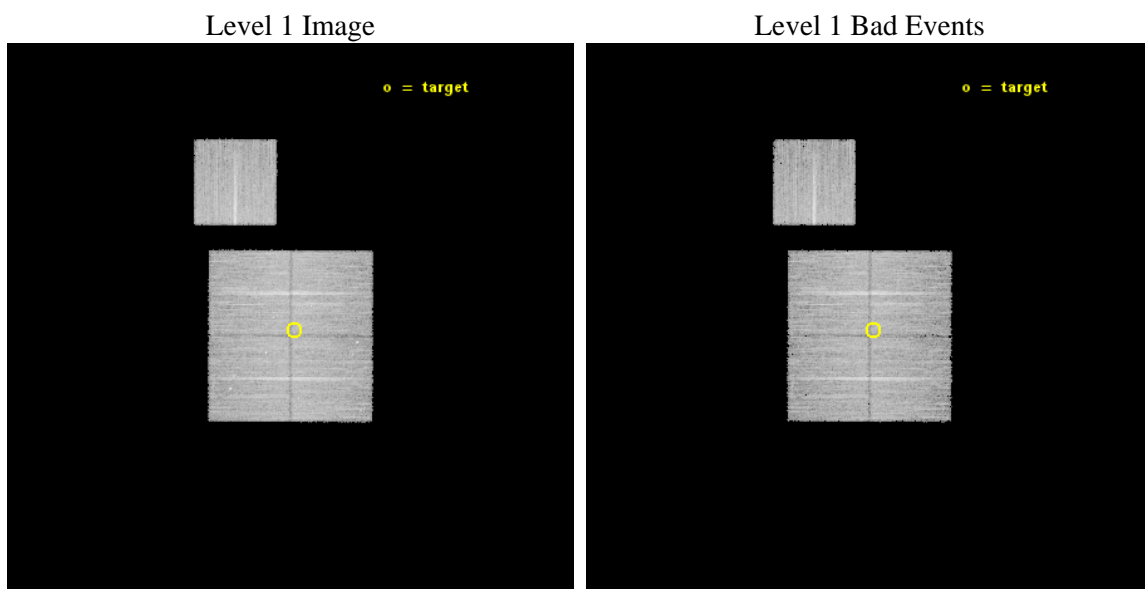
seq_num	901029	Sequence number
obs_id	15199	Observation id
title	Studying Giant Filamentary Lobes of Centaurus A	Proposal title
observer	Dr. Yasuyuki Tanaka	Principal investigator
object	Cen A Southern Lobe 1	Source name
dtcycle	0	
cycle	P	events from which exps? Prim/Second/Both
ra_targ	200.864	Observer's specified target RA [deg]
dec_targ	-45.161	Observer's specified target Dec [deg]
ra_nom	200.874949944	Nominal RA [deg]
dec_nom	-45.158537944346	Nominal Dec [deg]
roll_nom	0.21644901772598	Nominal Roll [deg]
revision	2	Processing version of data
ontime	19774.533236921	Sum of GTIs [s]
livetime	19516.164402381	Livetime [s]
ontime0	19774.410116911	Sum of GTIs [s]
ontime1	19774.451156914	Sum of GTIs [s]
ontime2	19774.492196918	Sum of GTIs [s]
ontime3	19774.533236921	Sum of GTIs [s]
ontime6	19771.228026688	Sum of GTIs [s]
l2events	51639	Number of level 2 events



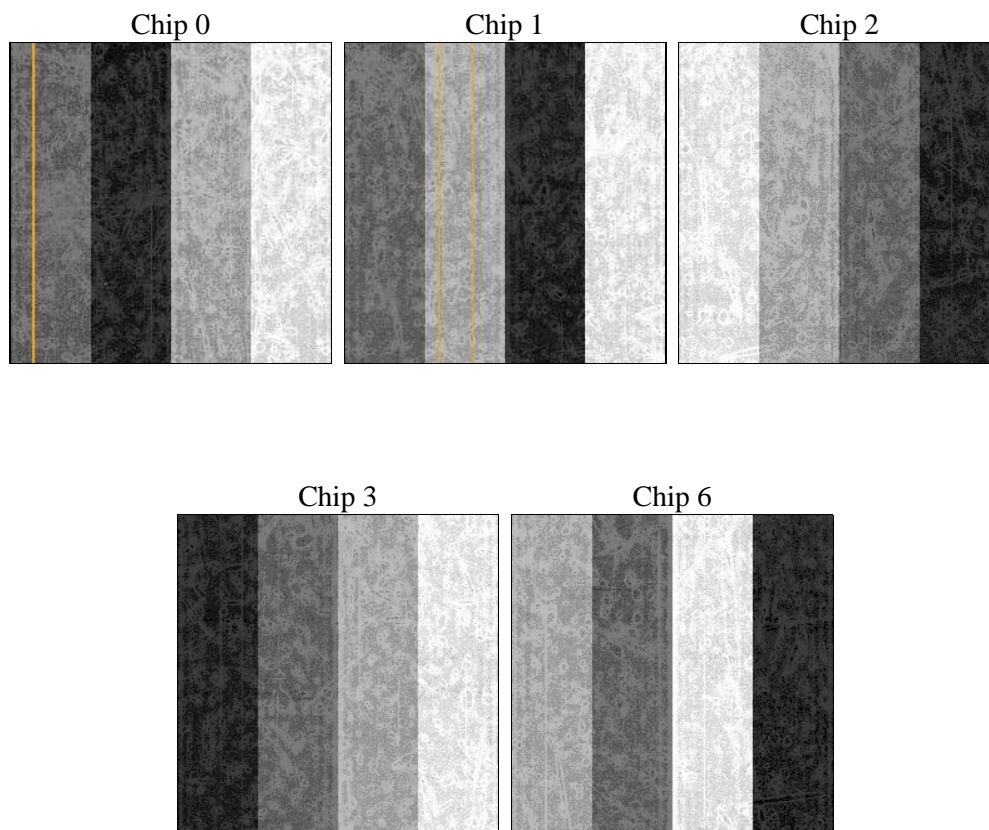
2 OBI

2.1 OBI

2.1.1 Images



2.1.2 Bias



2.1.3 Parameters

obi_num	0	Obi number	sched_exp_time	20000.000000	[s] Scheduled observation exposure time
ascdsver	10.3	Processing system revision	ontime	19774.533236921	Sum of GTIs [s]
caldsver	4.6.4	 	ontime0	19774.410116911	Sum of GTIs [s]
date	2014-12-02T17:56:06	Date and time of file creation	ontime1	19774.451156914	Sum of GTIs [s]
revision	2	Processing version of data	ontime2	19774.492196918	Sum of GTIs [s]
			ontime3	19774.533236921	Sum of GTIs [s]
			ontime6	19771.228026688	Sum of GTIs [s]
			l1events	484972	Number of level 1 events

2.1.4 Events

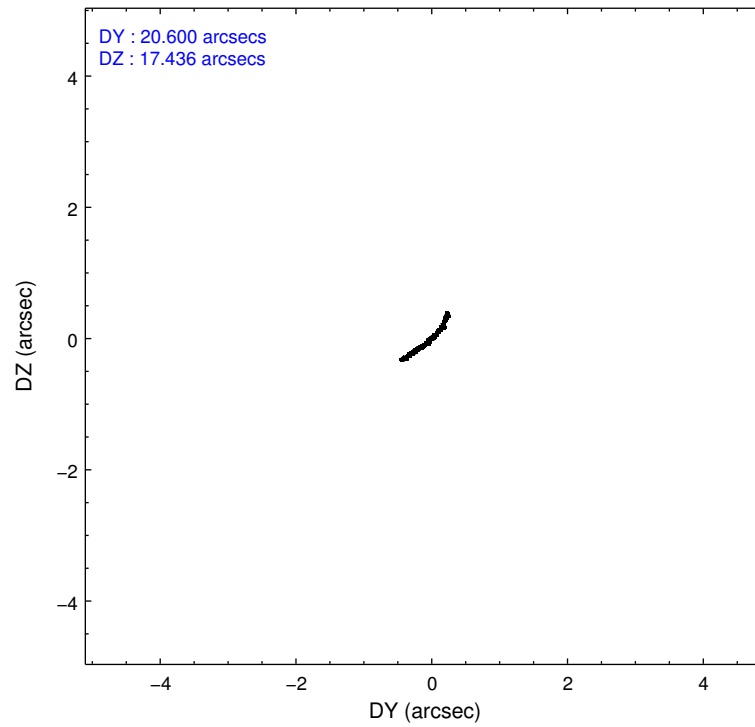
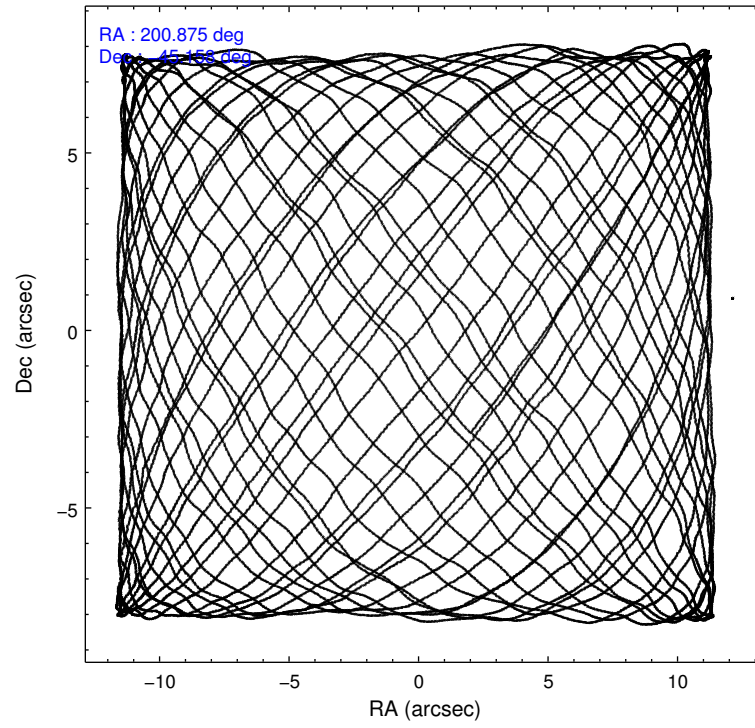
	ccd 0	ccd 1	ccd 2	ccd 3	ccd 6
level 1 events	94384	92698	101138	95841	100911
rejected events	81956	79111	89591	84681	89016
rejected %	86%	85%	88%	88%	88%

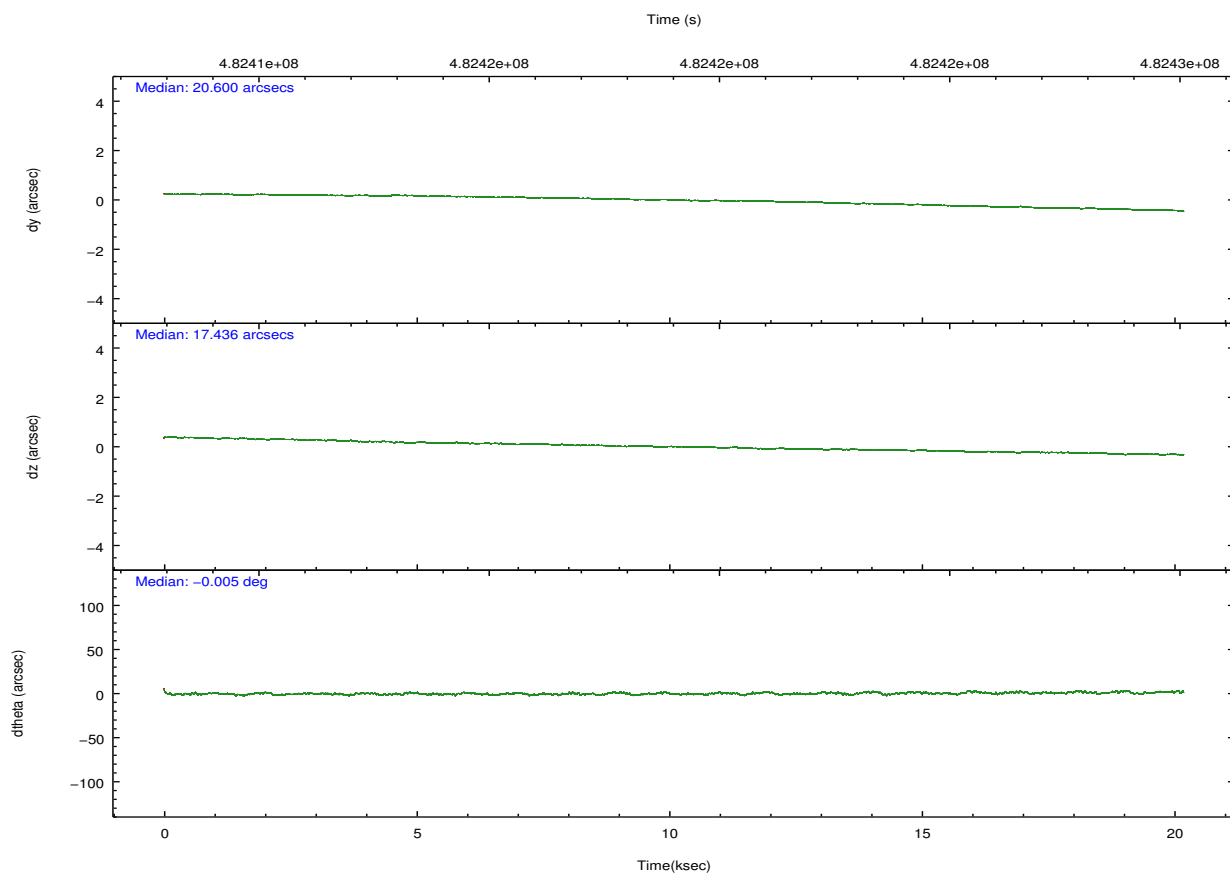
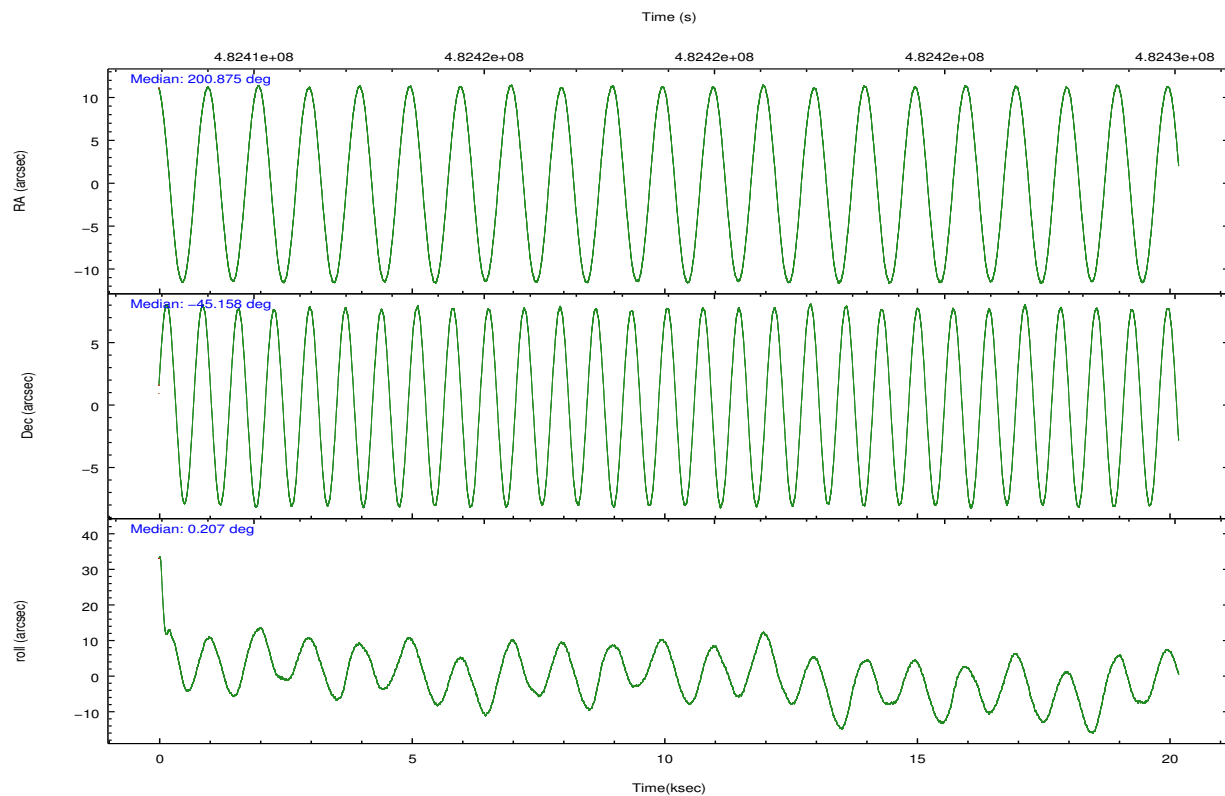
	ccd 0	ccd 1	ccd 2	ccd 3	ccd 6
grade 0 events	4684	4941	4221	3993	4146
	4%	5%	4%	4%	4%
grade 1 events	50	59	57	59	54
	0%	0%	0%	0%	0%
grade 2 events	3028	3164	2852	2460	2636
	3%	3%	2%	2%	2%
grade 3 events	1282	1329	1133	1113	1174
	1%	1%	1%	1%	1%
grade 4 events	1144	1328	1172	1208	1183
	1%	1%	1%	1%	1%
grade 5 events	4639	5037	4241	5386	4974
	4%	5%	4%	5%	4%
grade 6 events	2296	2830	2171	2387	2761
	2%	3%	2%	2%	2%
grade 7 events	77261	74010	85291	79235	83983
	81%	79%	84%	82%	83%

2.2 Compared Parameters

Parameter	Planned	Actual	Parameter	Planned	Actual
Instrument	ACIS	ACIS	Obspar format version number	7	7
Detector	ACIS-01236	ACIS-01236	Obspar file type	PREDICTED	ACTUAL
Grating	NONE	NONE	Obspar update status	NONE	UPDATED
Data mode	VFAINT	VFAINT	Number of optional ACIS chips dropped	0	0
Observation mode	POINTING	POINTING	On-chip summing requested	N	N
[deg] Pointing RA	200.841311	200.8749499439959	Subarray requested	NONE	NONE
[deg] Pointing Dec	-45.172499	-45.15853794434589	Alternating exposures requested	N	N
[deg] Pointing Roll	359.983904	0.2164490177259761	[s] Primary exposure time	0.000000	3.1
[mm] SIM focus pos	-0.782348	-0.7809083437167272			
[mm] SIM defocus	0	0.001439871863259334			
[mm] SIM translation stage pos	-233.592463	-233.5874344608287			
[mm] SIM translation stage offset	0	-0.005018542100998502			
[s] Observation start time (MET)	482409100.184000	482408724.15383			
Observation start date	2013-04-15T10:30:33	2013-04-15T10:25:24			
[s] Observation end time (MET)	482429100.184000	482430604.83001			
Observation end date	2013-04-15T16:03:53	2013-04-15T16:30:04			
Read mode	TIMED	TIMED			

2.3 Aspect



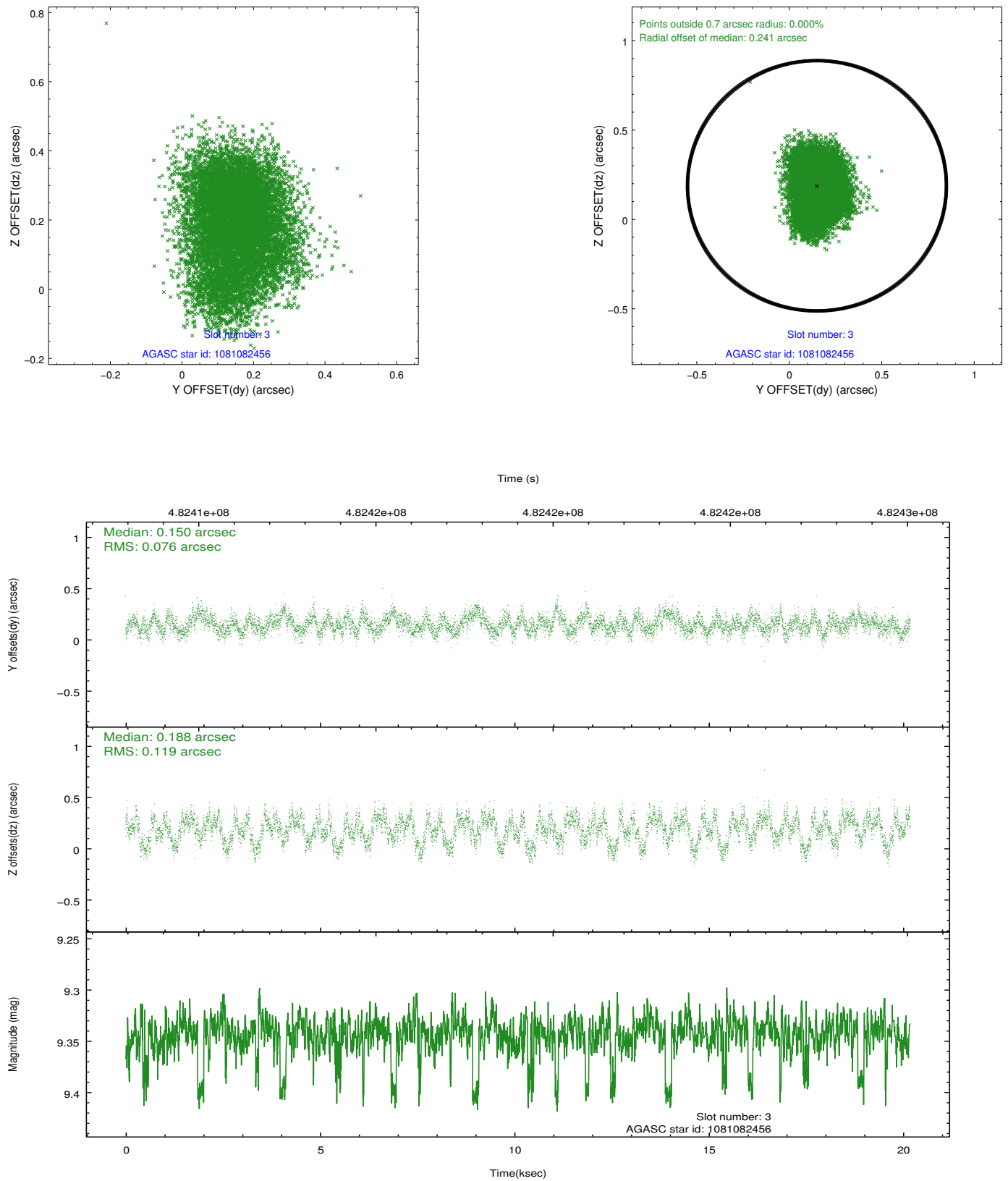


Slot Statistics

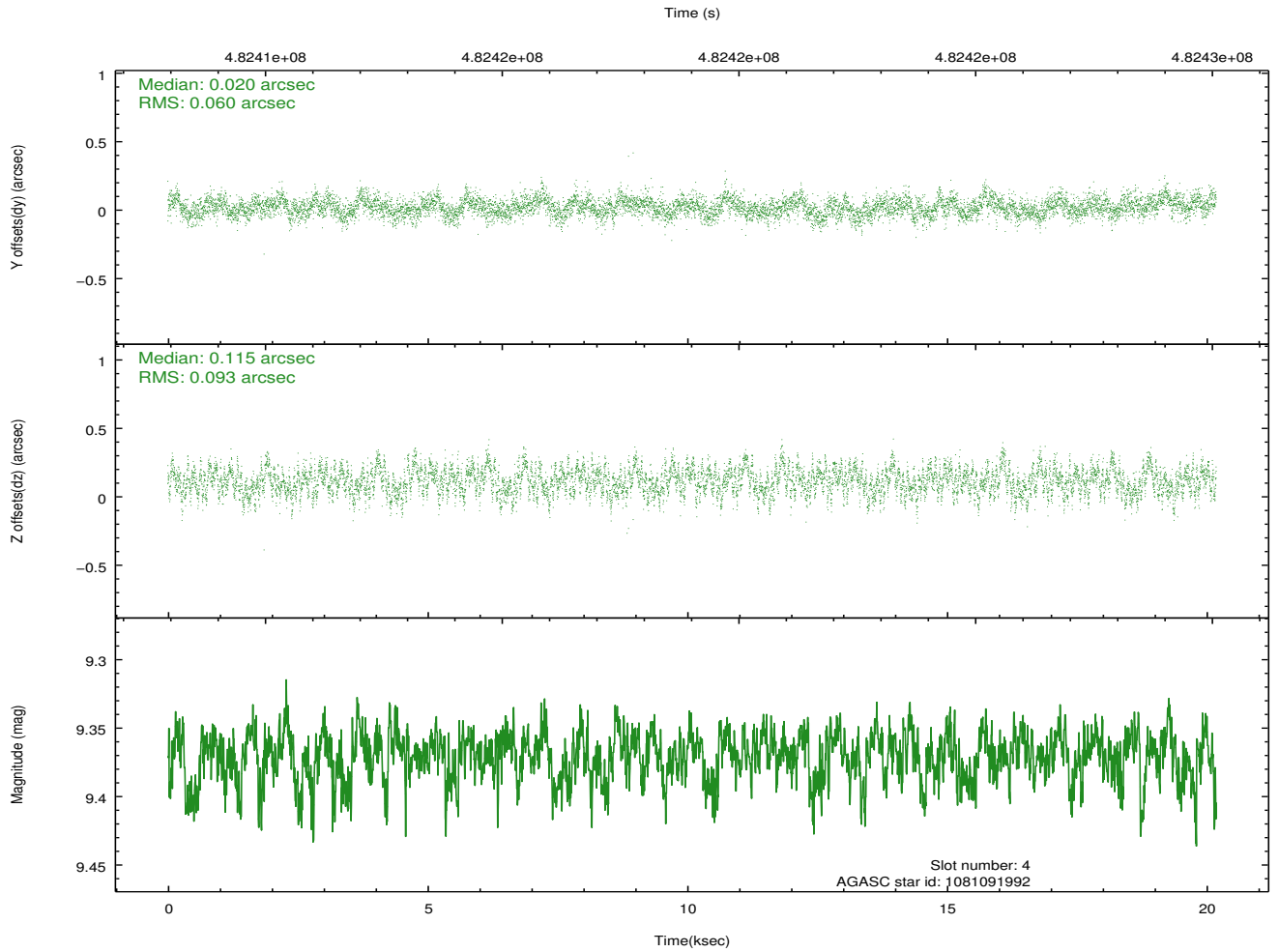
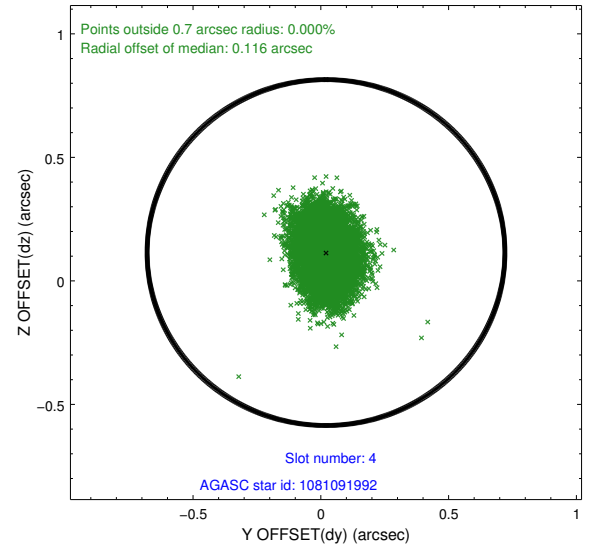
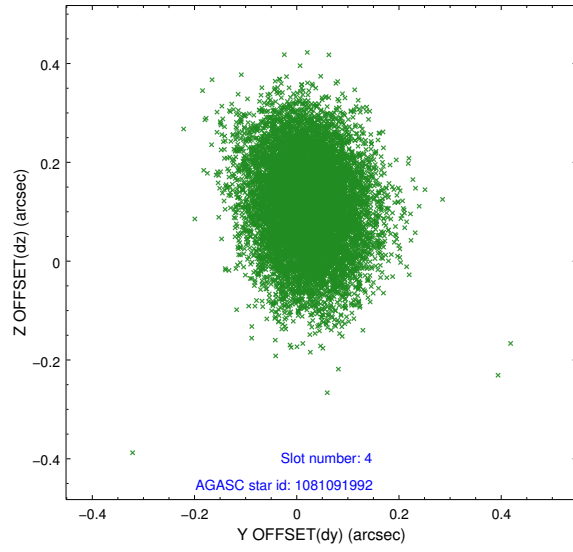
lot	status	used	id	mag	n_pts	med_dy	med_dz	drl	dr2	ra	dec	mean_y	mean_x
0	FID		ACIS-I-2	7.02	4923	-0.110	-0.120	0.022	0.042	0.000000	0.000000	-775.50	-847.62
1	FID		ACIS-I-4	7.05	4924	0.270	0.096	0.010	0.017	0.000000	0.000000	2138.76	1058.80
2	FID		ACIS-I-5	7.12	4923	-0.260	0.093	0.018	0.035	0.000000	0.000000	-1829.33	1056.67
3	GUIDE	used	1081082456	9.34	9839	0.150	0.188	0.152	0.241	201.015604	-45.237296	441.46	-233.92
4	GUIDE	used	1081091992	9.37	9839	0.020	0.115	0.118	0.192	201.109616	-45.662005	676.35	-1763.22
5	BAD	unused	1081092600	10.63	3	0.765	0.689	0.207	0.207	200.535372	-45.625731	-535.20	-2219.30
6	GUIDE	used	1022242720	9.59	9834	-0.101	-0.101	0.122	0.203	201.406052	-44.830460	1441.69	1226.62
7	GUIDE	used	1022243104	9.74	9835	-0.082	-0.199	0.163	0.251	201.514434	-44.706309	1721.56	1671.42

2.4 Star Slots

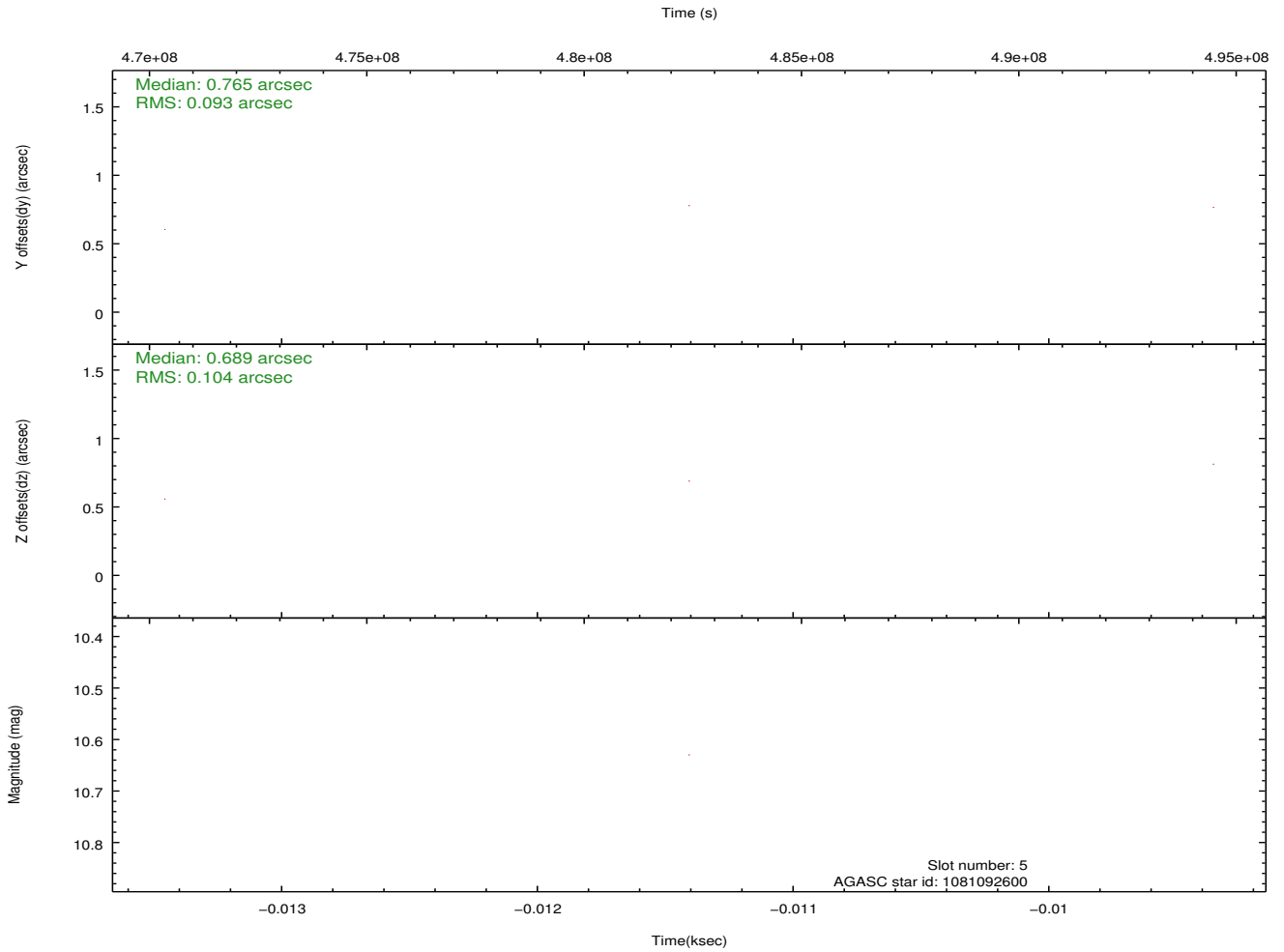
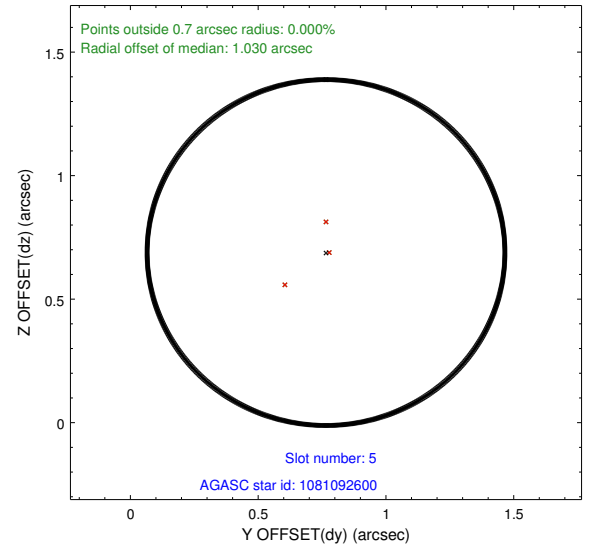
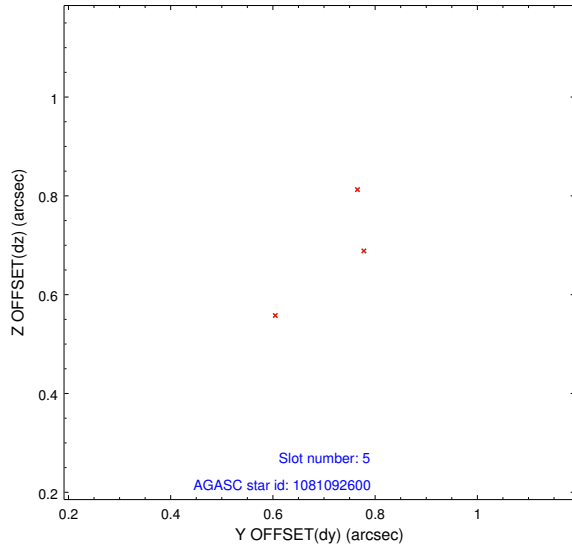
2.4.1 Slot 3



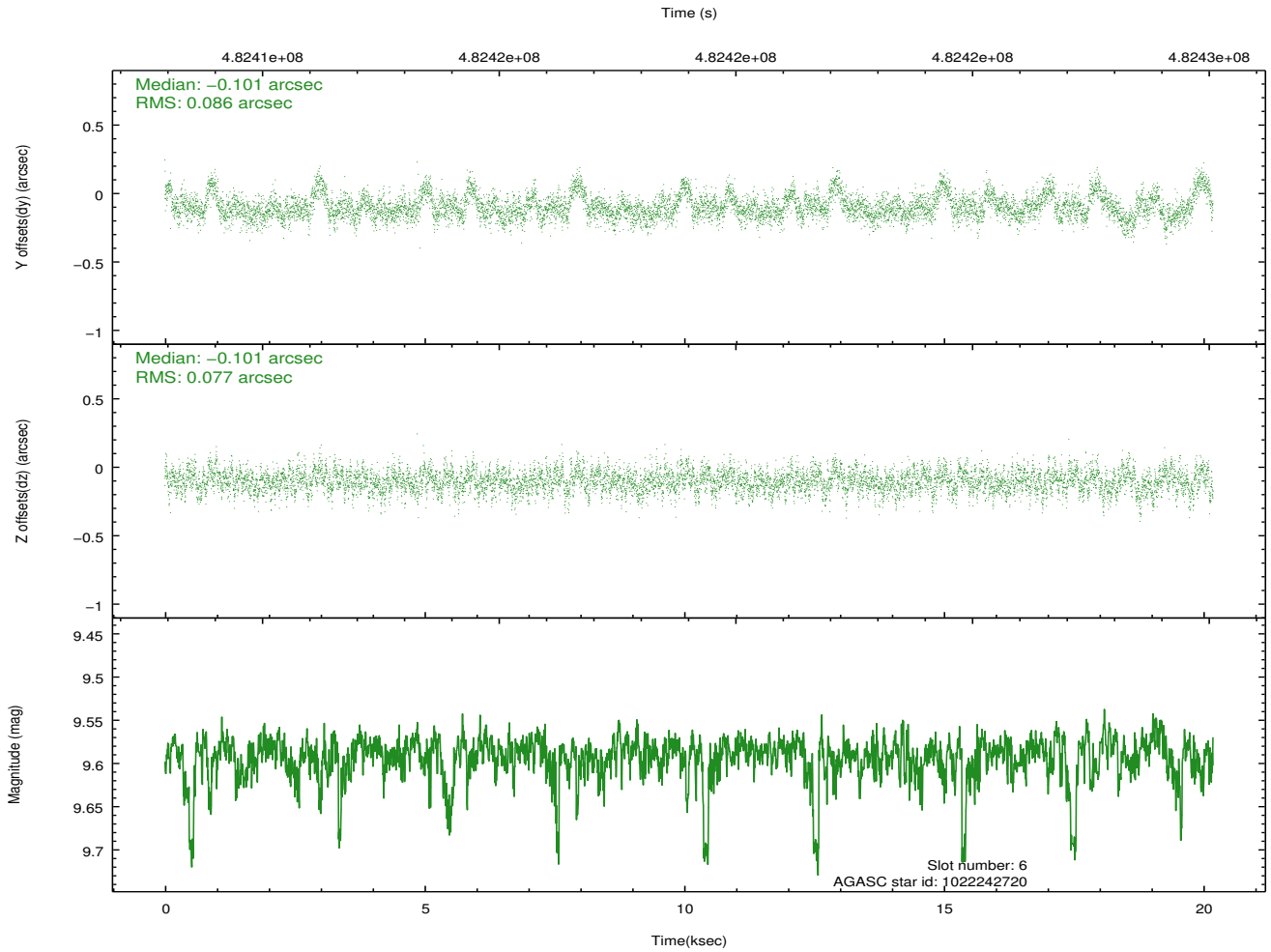
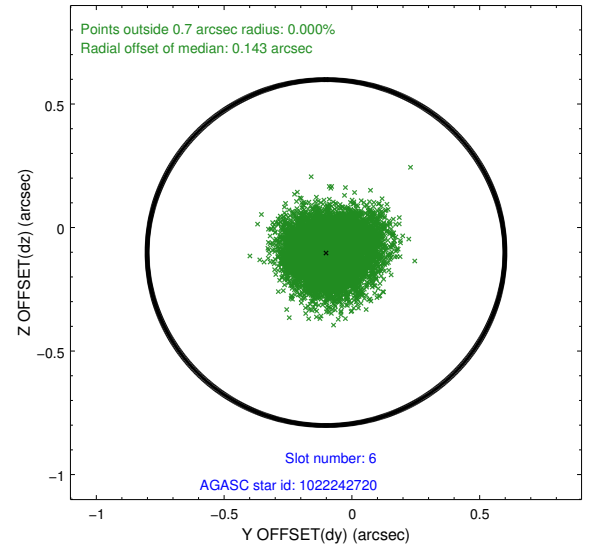
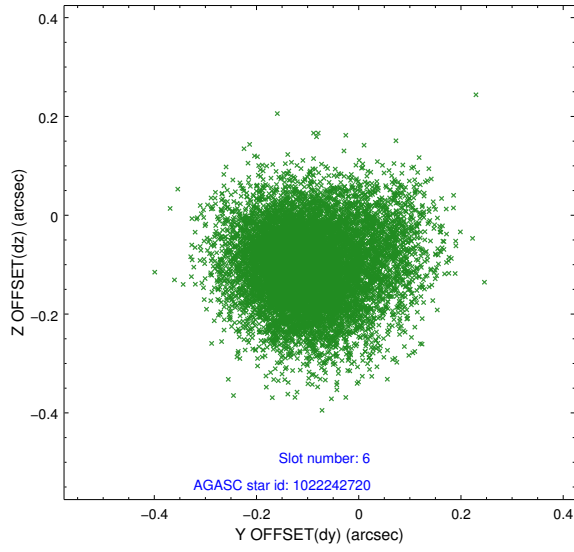
2.4.2 Slot 4



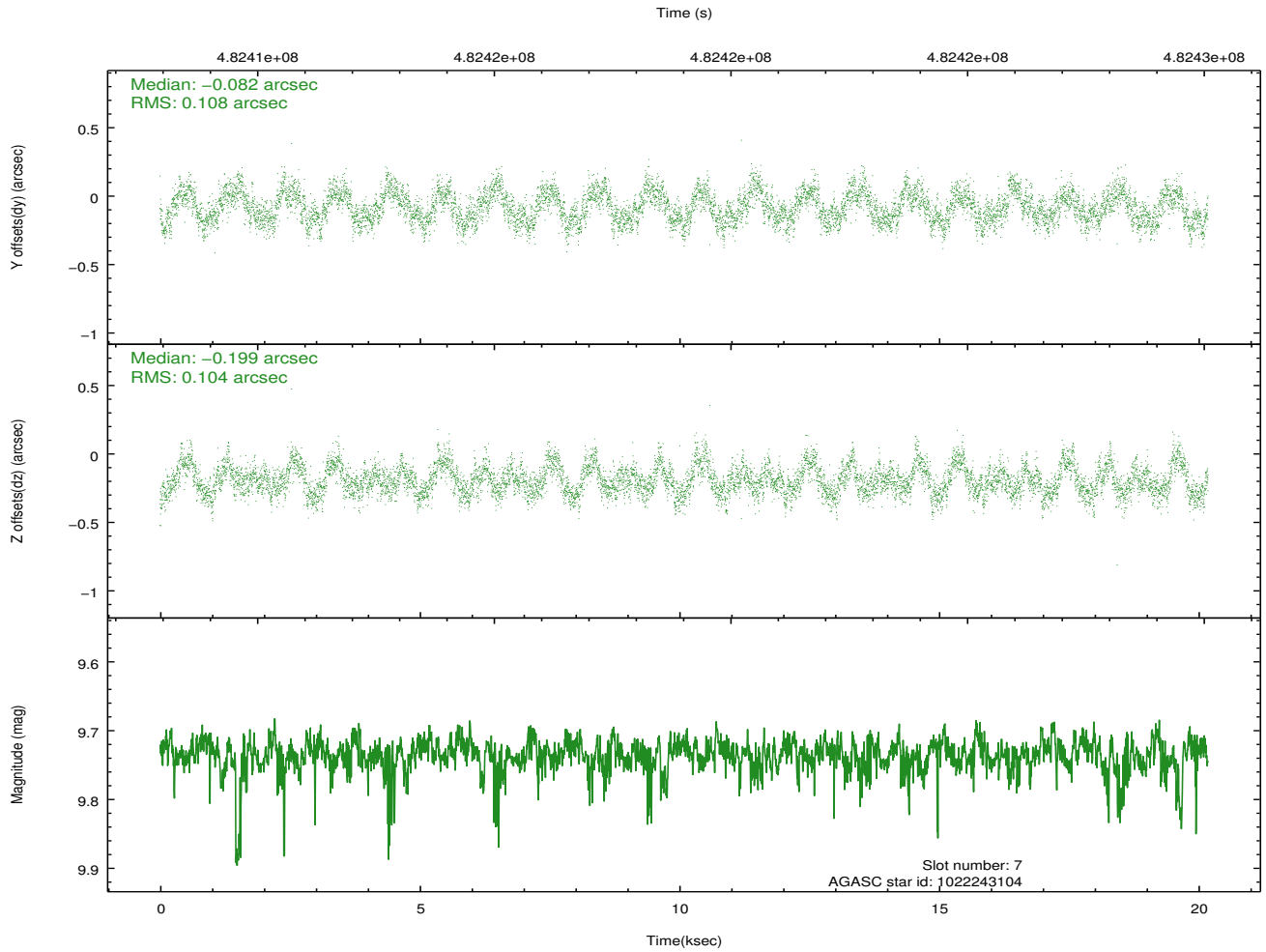
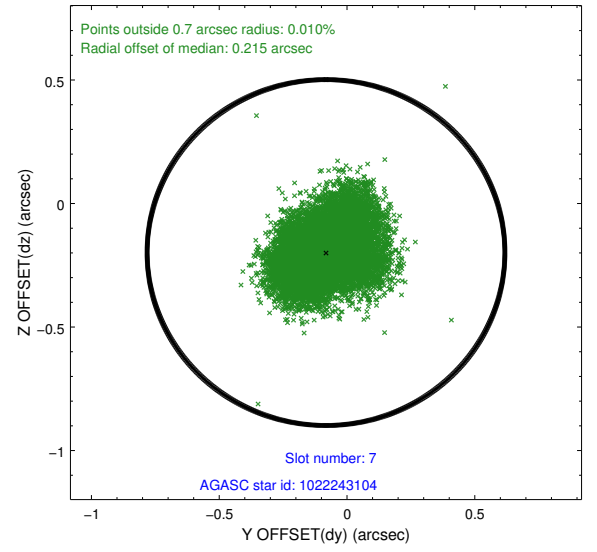
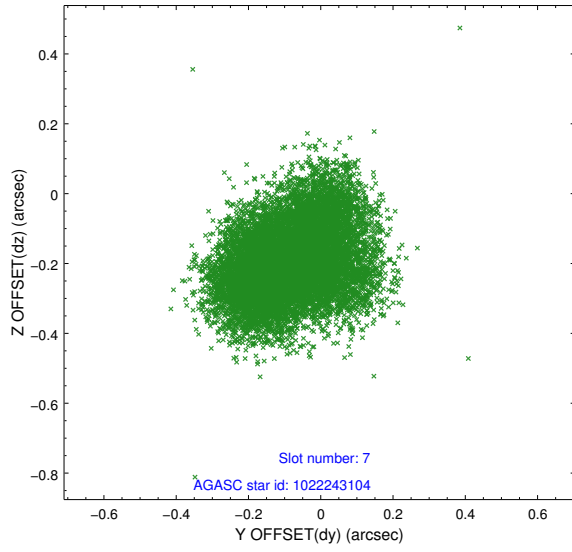
2.4.3 Slot 5



2.4.4 Slot 6

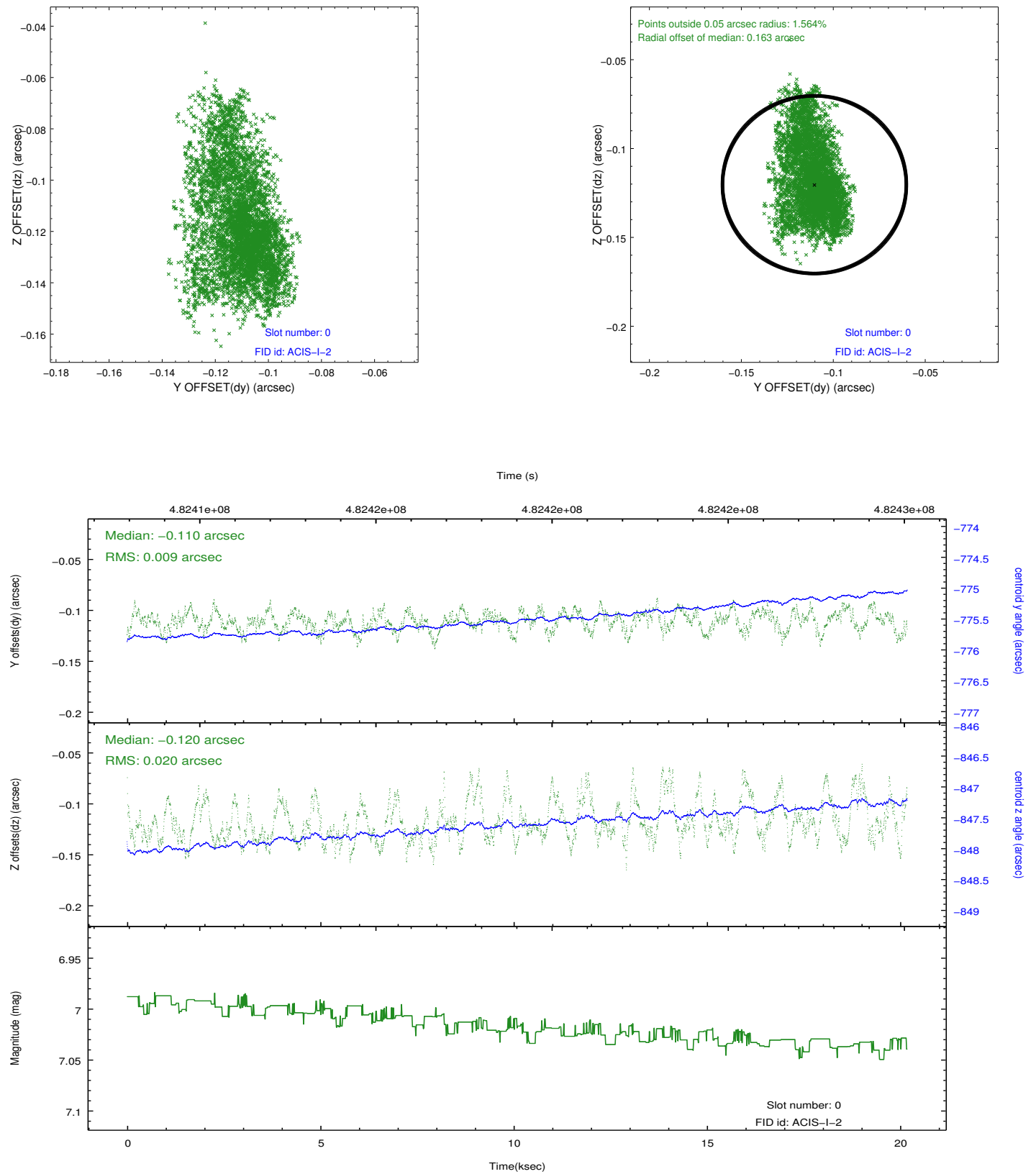


2.4.5 Slot 7

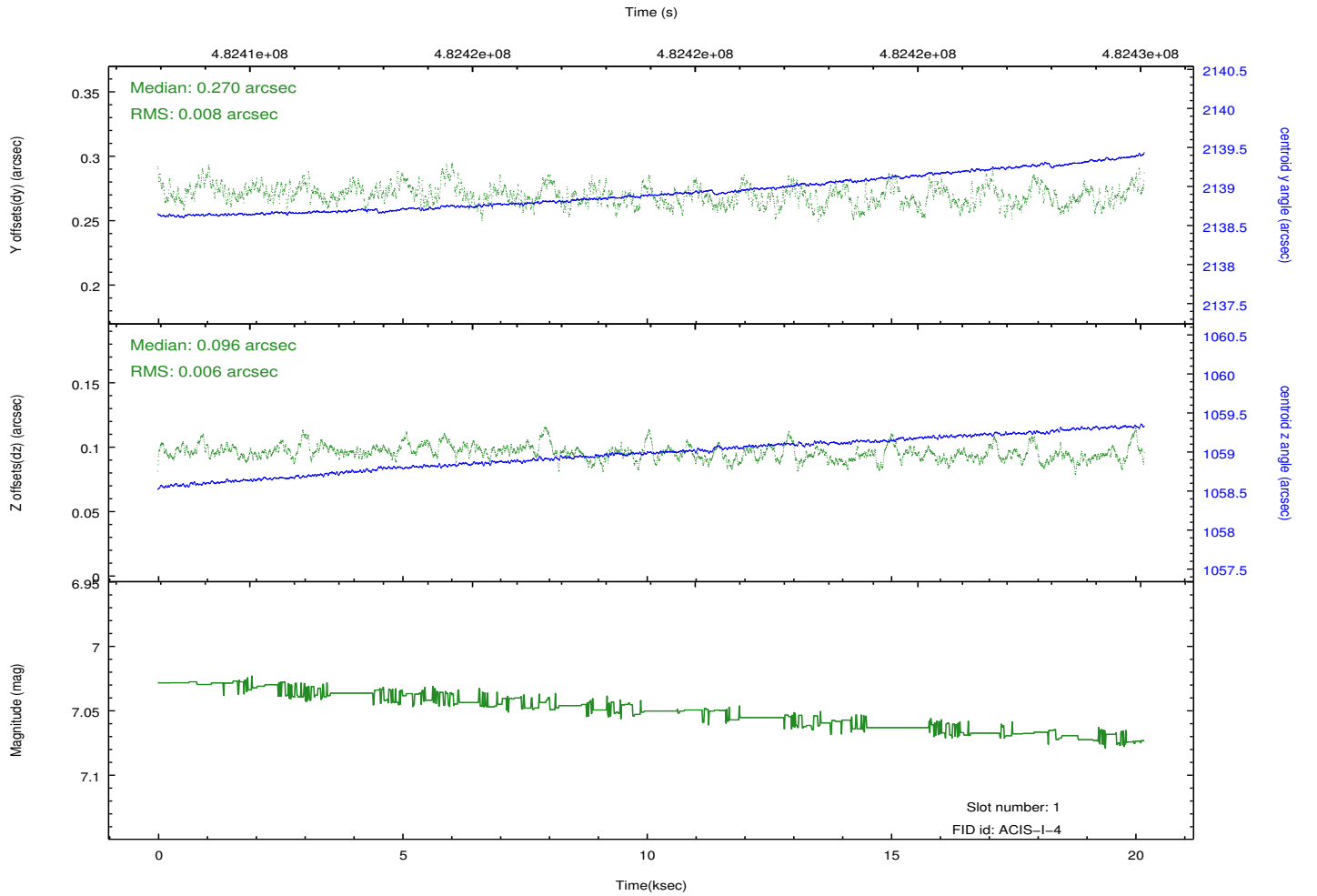
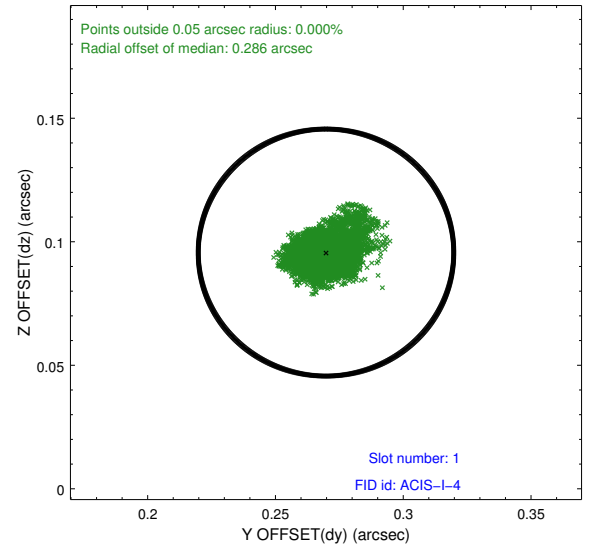
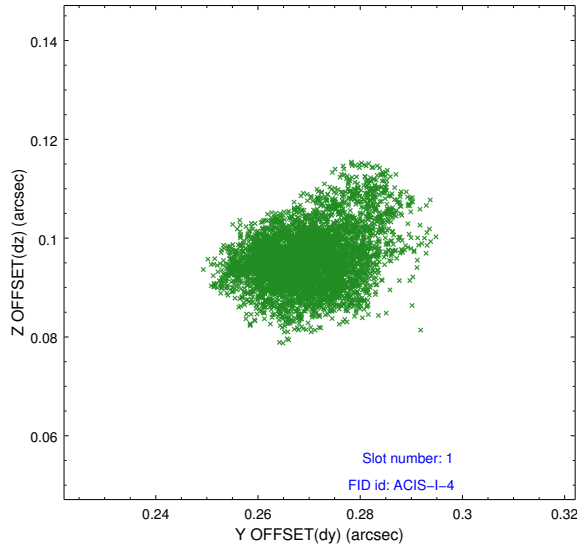


2.5 FID Slots

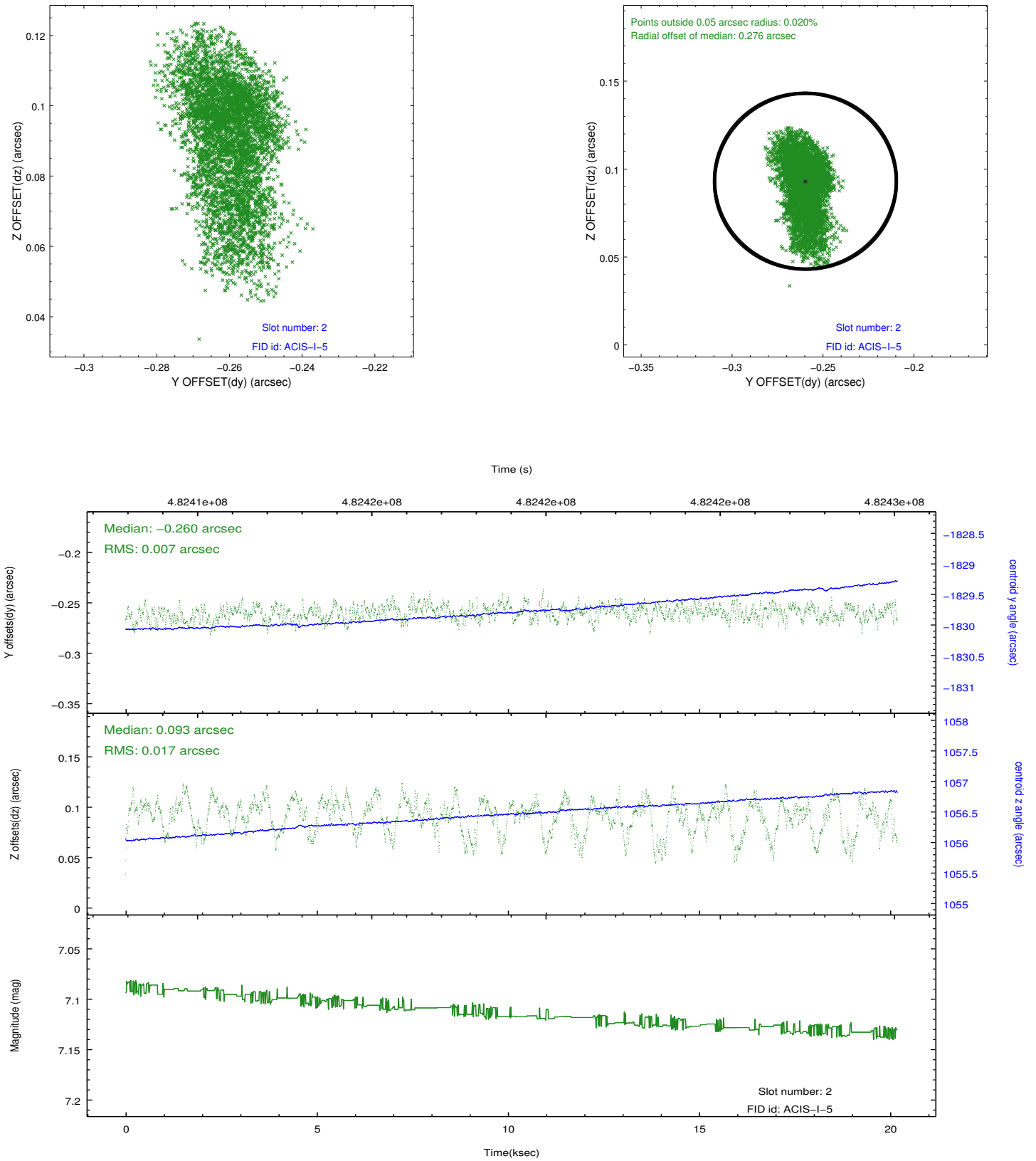
2.5.1 Slot 0



2.5.2 Slot 1



2.5.3 Slot 2



A Summary

A.1 Status

V&V Scientist	Beth Sundheim
V&V Date (YYYY-MM-DD)	2014.12.10
V&V Edition	1
V&V Disposition and Status	OK
V&V Charge Time	19.774533236921

A.2 Comments

Joint proposal with Suzaku.

These data have been reprocessed with new aspect alignment calibration files that correct small mean offsets (up to 0.4 arcsecs) and improve overall astrometric accuracy. The new calibration was determined using data from the time period being reprocessed and was performed using cross-correlation of X-ray sources with radio and optical counterparts.