

V&V Reference Report

L2 ASCDS Version : 10.1.1

Observation 15195 - L2 Version 2
Chandra X-Ray Center

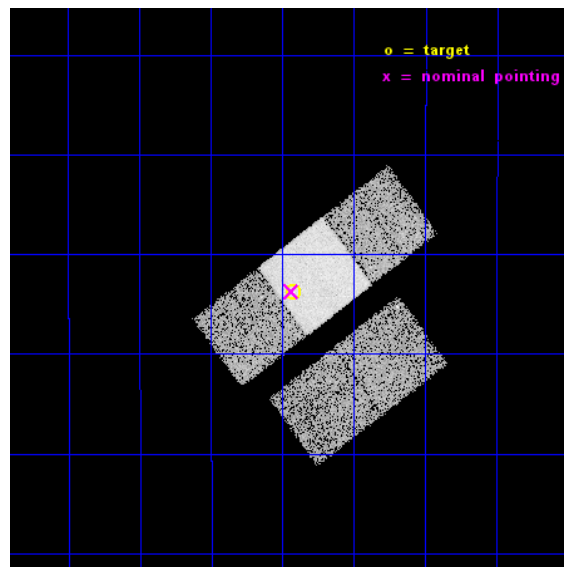
L2 Processing Date : Dec 9 2014

Contents

1	Front	2
2	OBI	3
2.1	OBI	3
2.1.1	Images	3
2.1.2	Bias	3
2.1.3	Parameters	4
2.1.4	Events	4
2.2	Compared Parameters	5
2.3	Aspect	6
2.4	Star Slots	9
2.4.1	Slot 3	9
2.4.2	Slot 4	10
2.4.3	Slot 5	11
2.4.4	Slot 6	12
2.4.5	Slot 7	13
2.5	FID Slots	14
2.5.1	Slot 0	14
2.5.2	Slot 1	15
2.5.3	Slot 2	16
A	Summary	17
A.1	Status	17
A.2	Comments	17

1 Front

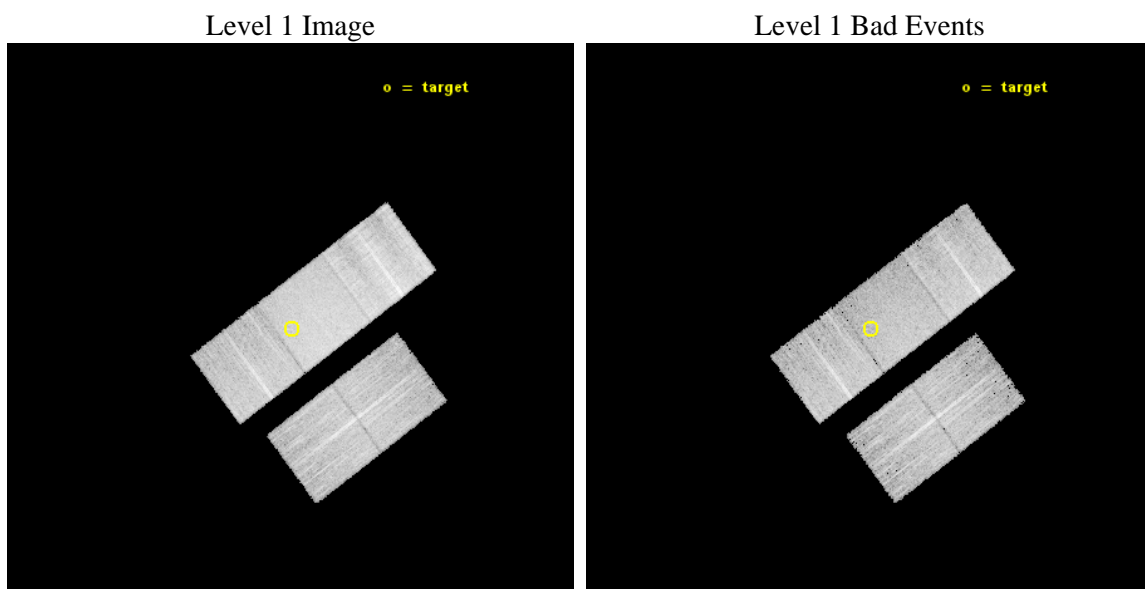
seq_num	901025	Sequence number
obs_id	15195	Observation id
title	A Chandra/HST survey of dark gamma-ray bursts and their hosts	Prop
observer	Dr Andrew Levan	Principal investigator
object	GRB131229A	Source name
dtcycle	0	
cycle	P	events from which exps? Prim/Second/Both
ra_targ	85.231708	Observer's specified target RA [deg]
dec_targ	-4.396306	Observer's specified target Dec [deg]
ra_nom	85.234580973338	Nominal RA [deg]
dec_nom	-4.39523984042	Nominal Dec [deg]
roll_nom	322.97095943708	Nominal Roll [deg]
revision	2	Processing version of data
ontime	15252.000117302	Sum of GTIs [s]
livetime	15052.72150741	Livetime [s]
ontime2	15252.000117302	Sum of GTIs [s]
ontime3	15252.000117302	Sum of GTIs [s]
ontime6	15248.859086931	Sum of GTIs [s]
ontime7	15252.000117302	Sum of GTIs [s]
ontime8	15248.859067023	Sum of GTIs [s]
l2events	72982	Number of level 2 events



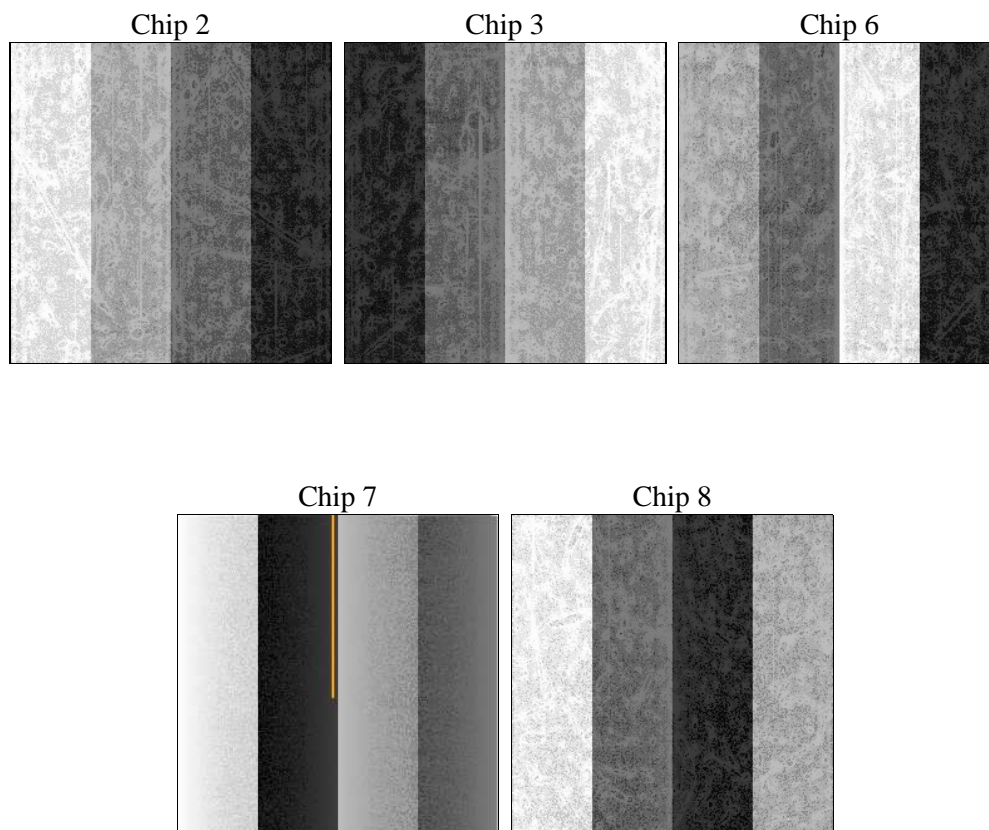
2 OBI

2.1 OBI

2.1.1 Images



2.1.2 Bias



2.1.3 Parameters

obi_num	0	Obi number	sched_exp_time	15182.312000	[s] Scheduled observation exposure time
ascdsver	10.3.1	Processing system revision	ontime	15252.000117302	Sum of GTIs [s]
caldsver	4.6.4	 	ontime2	15252.000117302	Sum of GTIs [s]
date	2014-12-09T21:54:03	Date and time of file creation	ontime3	15252.000117302	Sum of GTIs [s]
revision	2	Processing version of data	ontime6	15248.859086931	Sum of GTIs [s]
			ontime7	15252.000117302	Sum of GTIs [s]
			ontime8	15248.859067023	Sum of GTIs [s]
			l1events	426390	Number of level 1 events

2.1.4 Events

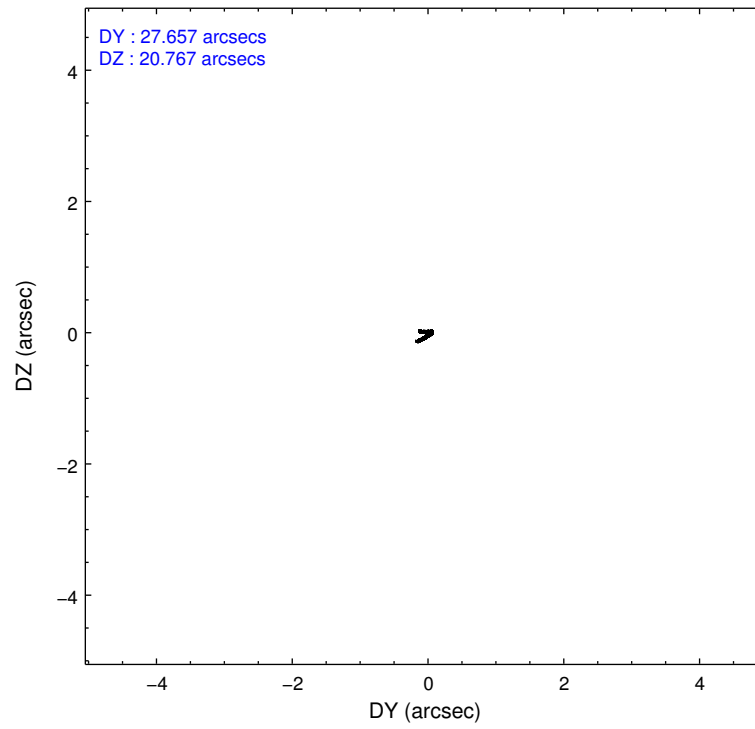
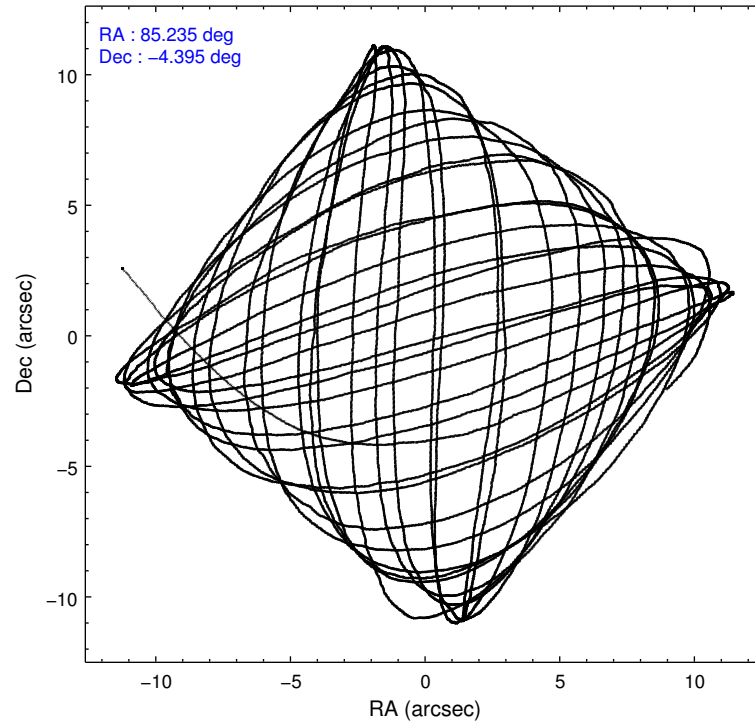
	ccd 2	ccd 3	ccd 6	ccd 7	ccd 8
level 1 events	71608	67859	75905	102041	108977
rejected events	63283	59726	66819	58407	74147
rejected %	88%	88%	88%	57%	68%

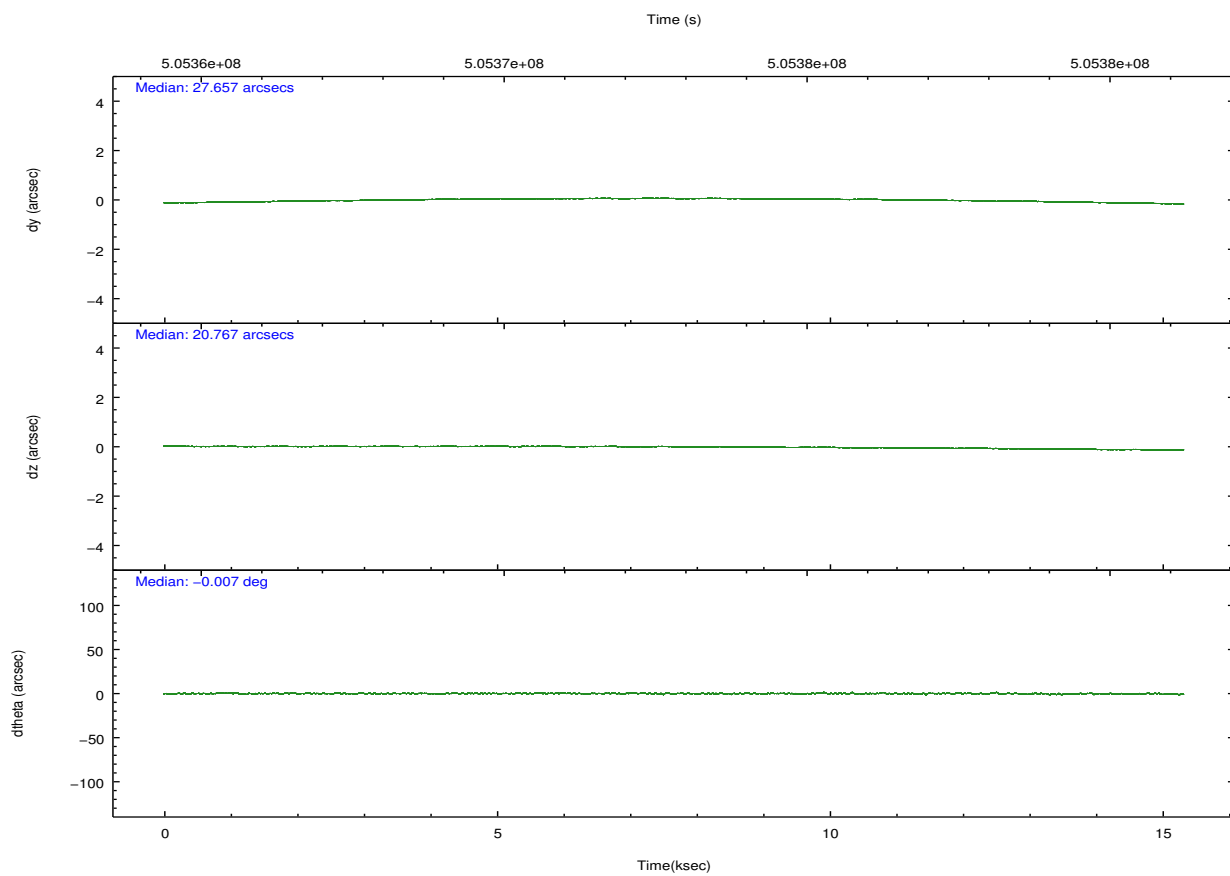
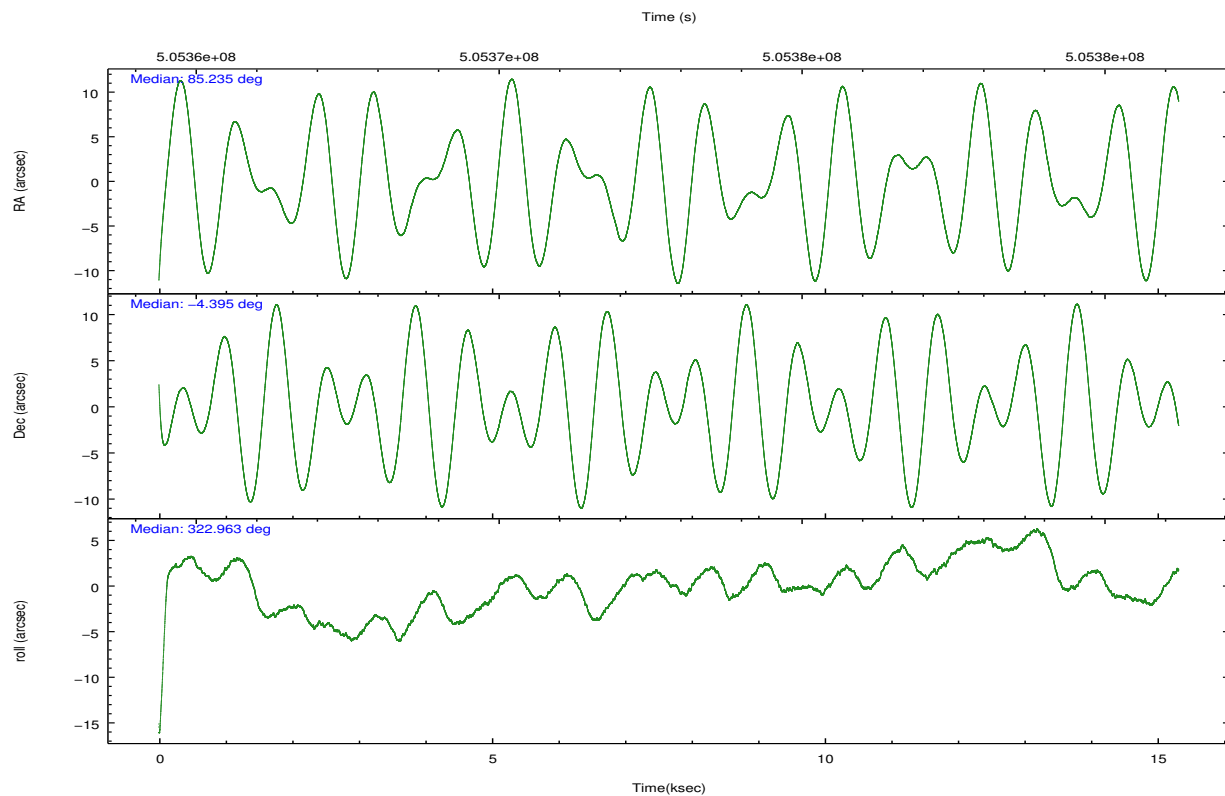
	ccd 2	ccd 3	ccd 6	ccd 7	ccd 8
grade 0 events	2875	2790	3042	3821	10626
	4%	4%	4%	3%	9%
grade 1 events	31	43	43	132	114
	0%	0%	0%	0%	0%
grade 2 events	2055	1788	2064	8953	6927
	2%	2%	2%	8%	6%
grade 3 events	841	900	949	3699	4754
	1%	1%	1%	3%	4%
grade 4 events	868	939	952	3550	4347
	1%	1%	1%	3%	3%
grade 5 events	3258	3955	3880	10476	5824
	4%	5%	5%	10%	5%
grade 6 events	1687	1718	2083	23621	8178
	2%	2%	2%	23%	7%
grade 7 events	59993	55726	62892	47789	68207
	83%	82%	82%	46%	62%

2.2 Compared Parameters

Parameter	Planned	Actual	Parameter	Planned	Actual
Instrument	ACIS	ACIS	Obspar format version number	7	7
Detector	ACIS-23678	ACIS-23678	Obspar file type	PREDICTED	ACTUAL
Grating	NONE	NONE	Obspar update status	NONE	UPDATED
Data mode	VFAINT	VFAINT	CCD I0 on	N	N
Observation mode	POINTING	POINTING	CCD I1 on	N	N
[deg] Pointing RA	85.207292	85.23458097333847	CCD I2 on	O3	Y
[deg] Pointing Dec	-4.392273	-4.395239840420012	CCD I3 on	O2	Y
[deg] Pointing Roll	322.812250	322.9709594370831	CCD S0 on	N	N
[mm] SIM focus pos	-0.684267	-0.6828225247311905	CCD S1 on	O1	N
[mm] SIM defocus	0	0.001444936568705701	CCD S2 on	Y	Y
[mm] SIM translation stage pos	-190.132523	-190.1425803651734	CCD S3 on	Y	Y
[mm] SIM translation stage offset	0	0.01005778216563158	CCD S4 on	O4	Y
[s] Observation start time (MET)	505365276.184000	505363948.9058	CCD S5 on	N	N
Observation start date	2014-01-06T03:13:29	2014-01-06T02:52:28	Number of optional ACIS chips dropped	1	1
[s] Observation end time (MET)	505380458.184000	505380684.59422	On-chip summing requested	N	N
Observation end date	2014-01-06T07:26:31	2014-01-06T07:31:24	Subarray requested	NONE	NONE
Read mode	TIMED	TIMED	Alternating exposures requested	N	N
			[s] Primary exposure time	0.000000	3.1

2.3 Aspect



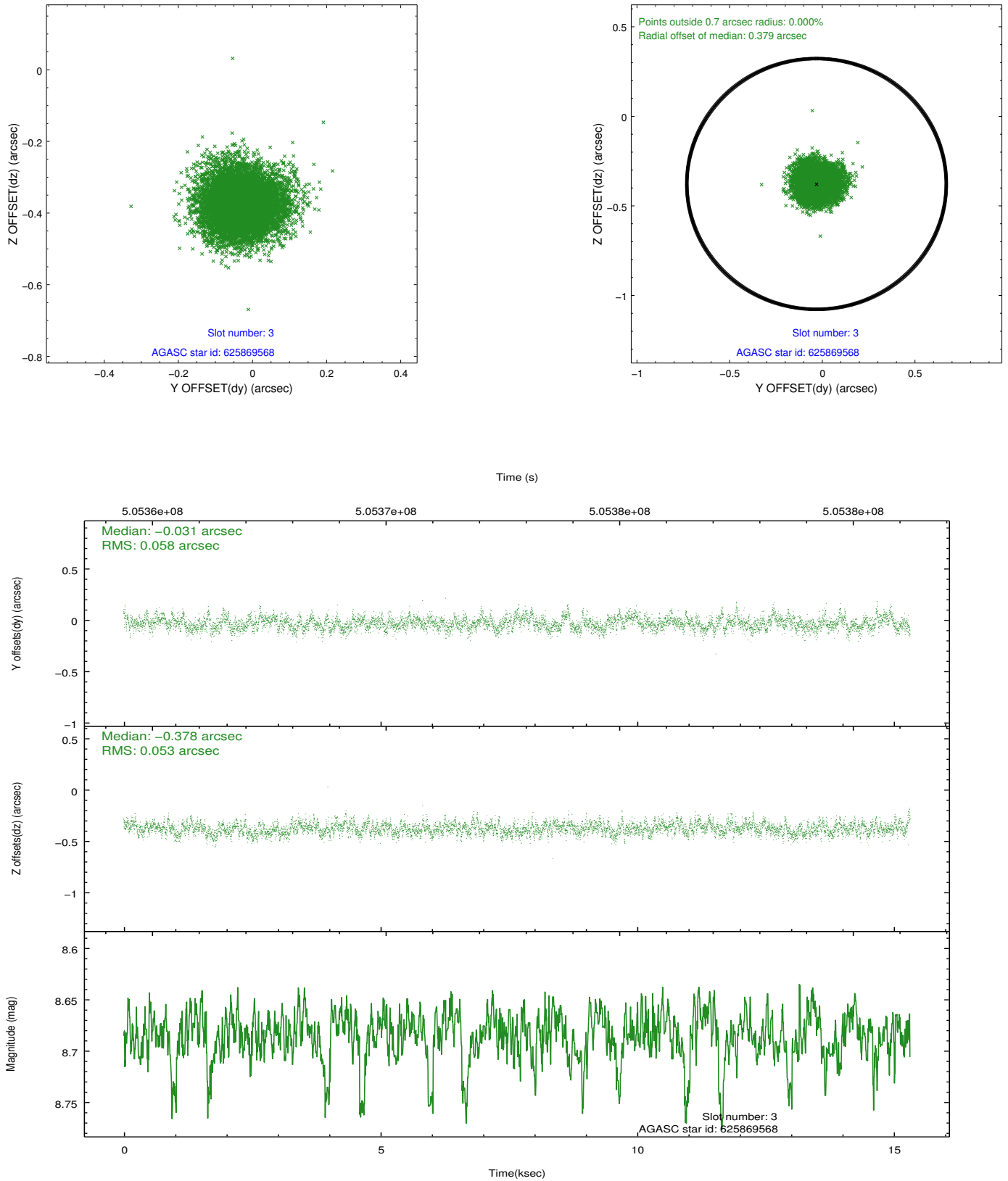


Slot Statistics

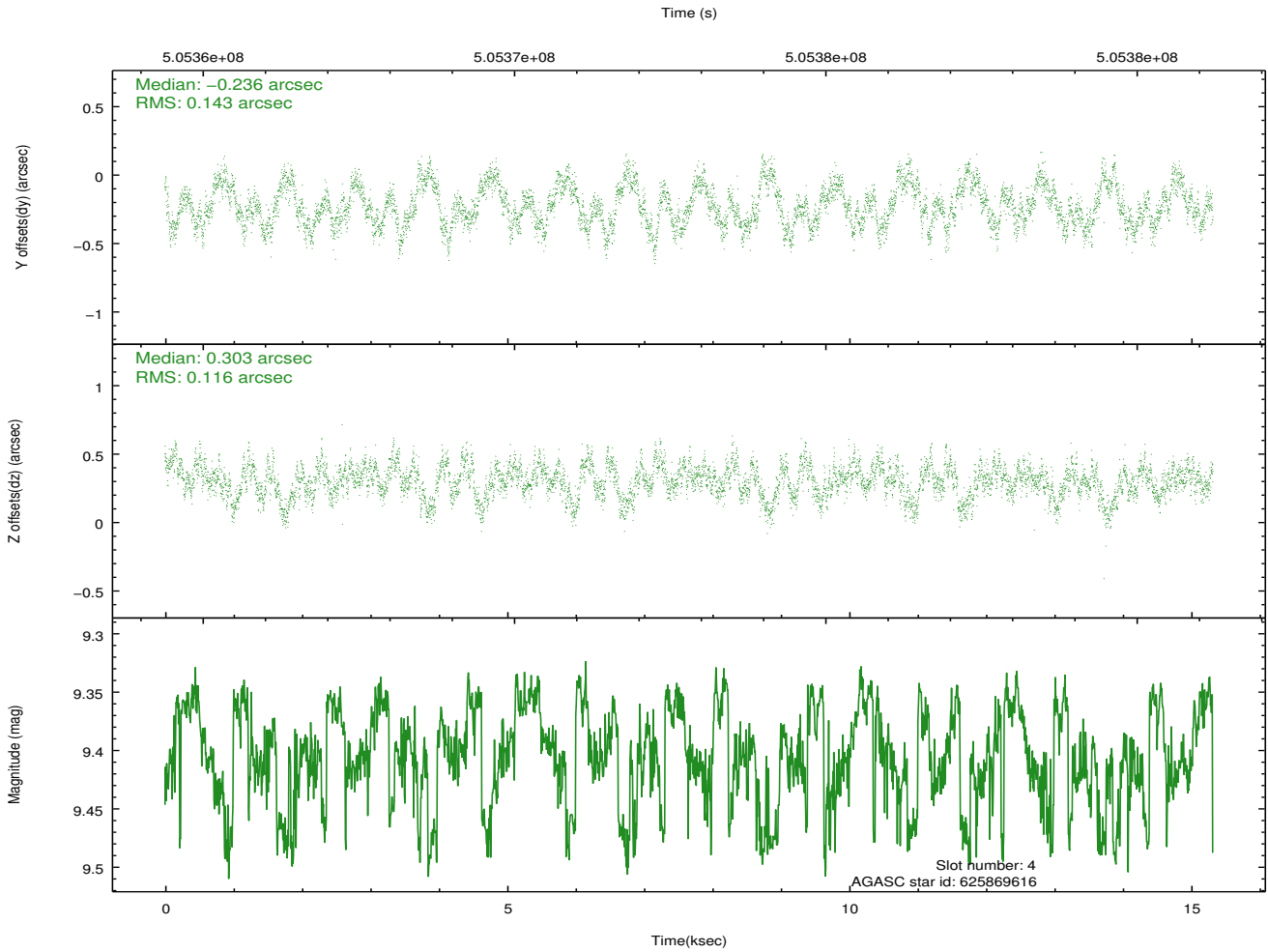
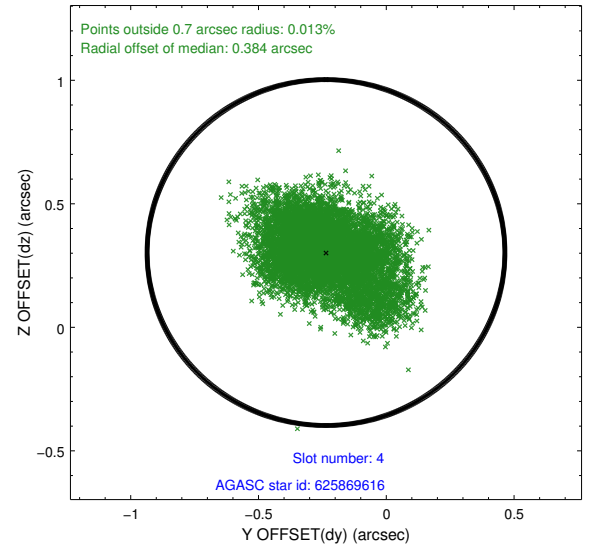
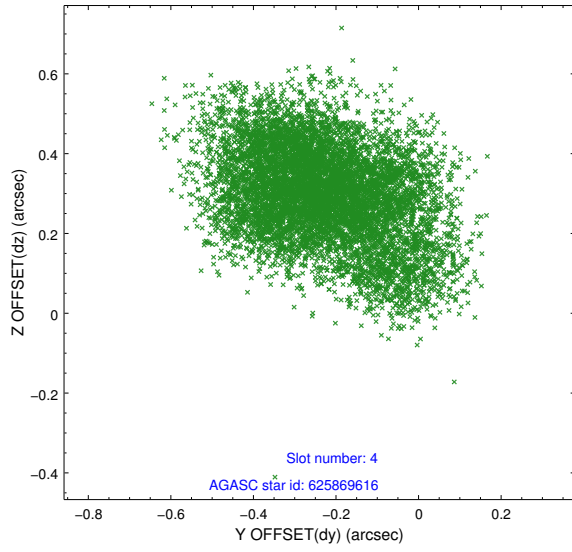
slot	status	used	id	mag	n_pts	med_dy	med_dz	dr1	dr2	ra	dec	mean_y	mean_z
0	FID		ACIS-S-1	7.11	3737	0.090	-0.084	0.006	0.011	0.000000	0.000000	915.23	-1737.91
1	FID		ACIS-S-5	7.14	3738	-0.246	0.024	0.007	0.012	0.000000	0.000000	-1834.01	159.36
2	FID		ACIS-S-6	7.25	3737	0.135	0.072	0.007	0.011	0.000000	0.000000	380.42	803.77
3	GUIDE	used	625869568	8.68	7471	-0.031	-0.378	0.083	0.135	85.691914	-4.636187	1916.62	351.25
4	GUIDE	used	625869616	9.40	7465	-0.236	0.303	0.197	0.320	85.276168	-4.969651	1453.66	-1505.80
5	GUIDE	used	625870016	8.37	7473	0.245	0.264	0.107	0.170	84.839844	-4.778431	-208.38	-1904.32
6	GUIDE	used	625873720	6.88	7475	-0.015	-0.022	0.113	0.179	85.240341	-3.843154	-1100.30	1646.50
7	GUIDE	used	625354128	8.40	7469	0.029	-0.161	0.122	0.193	85.283869	-3.632567	-1434.11	2345.31

2.4 Star Slots

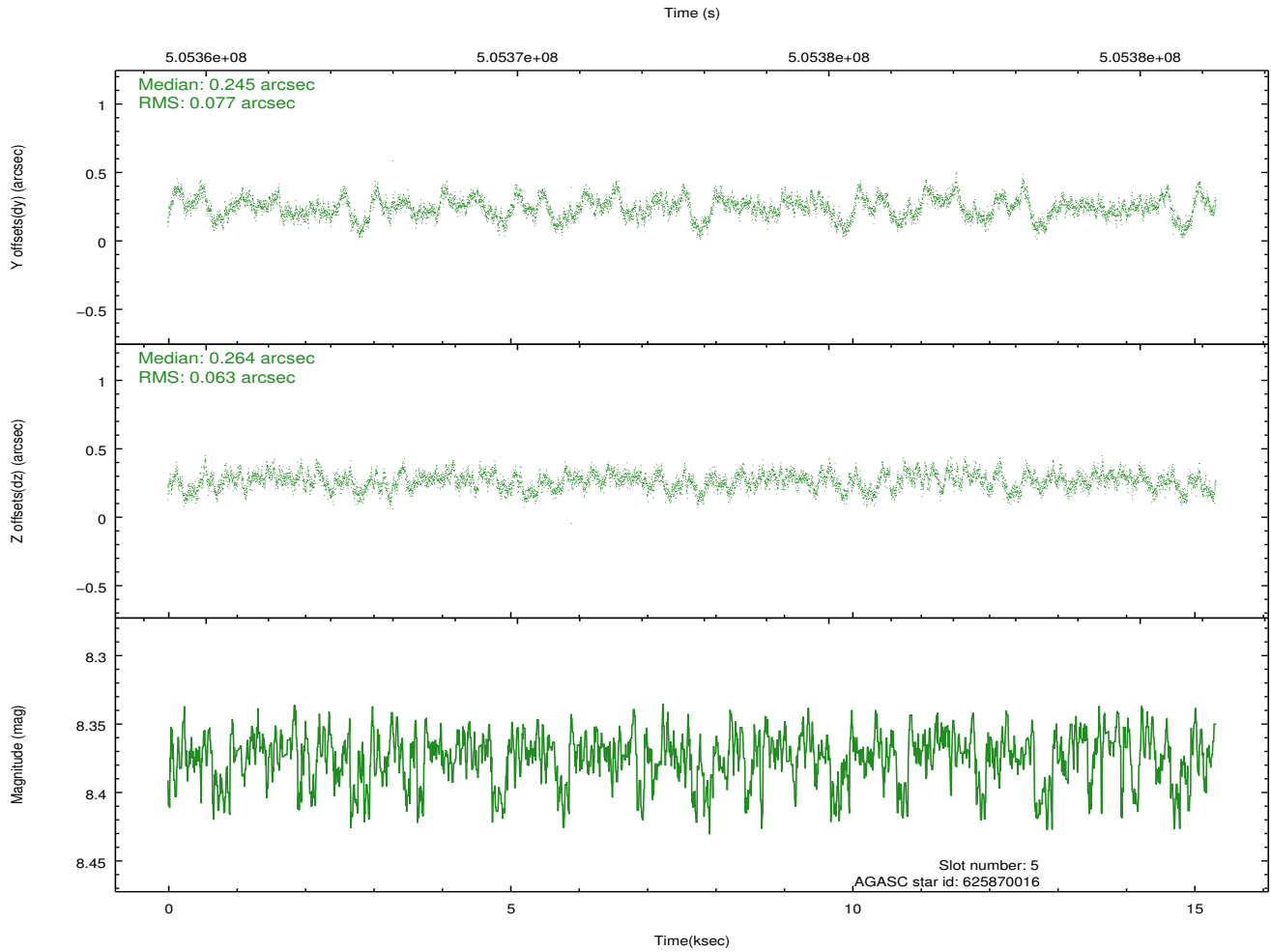
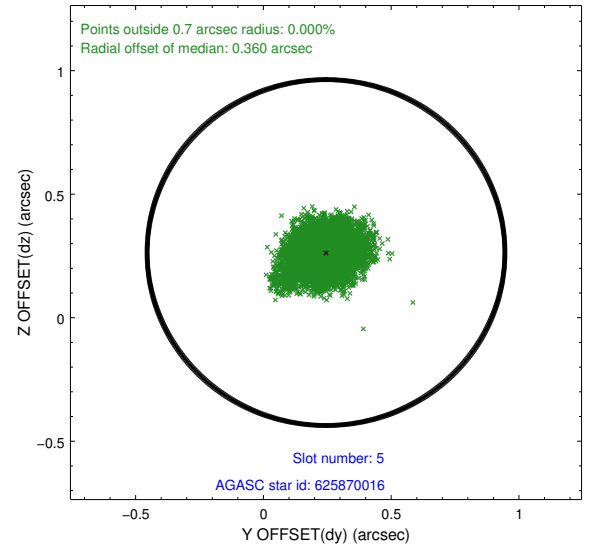
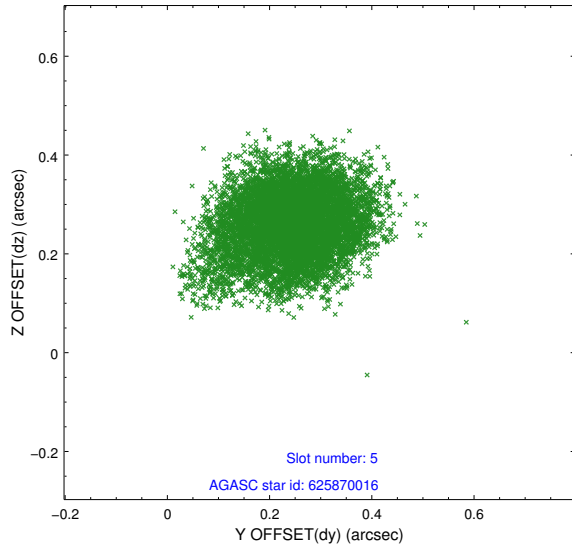
2.4.1 Slot 3



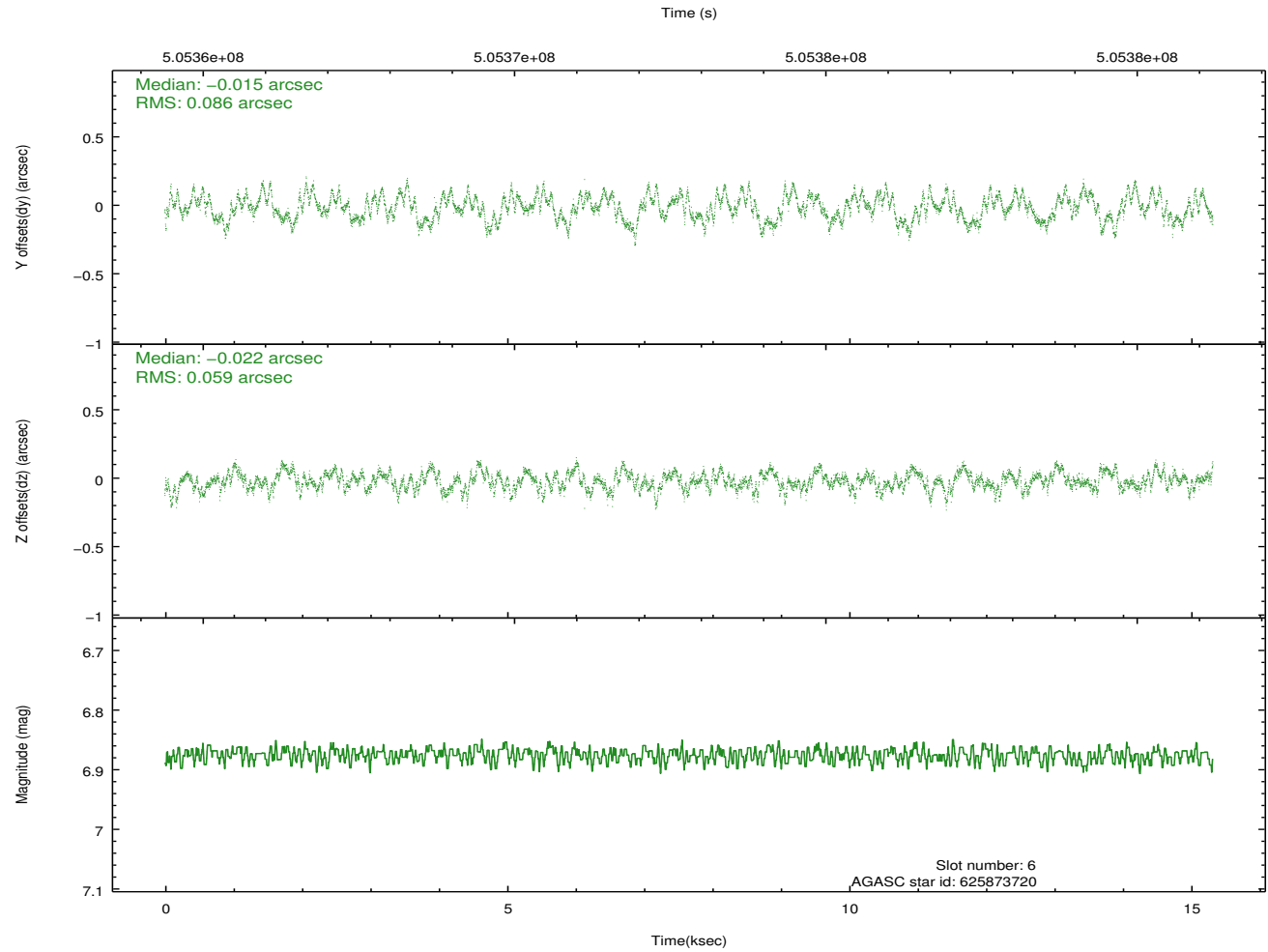
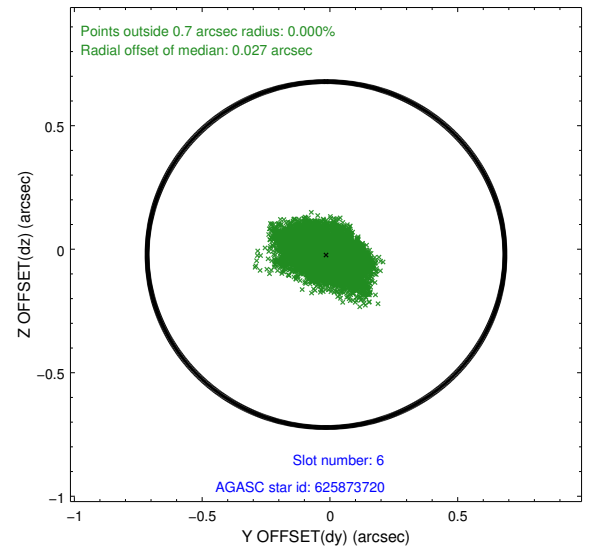
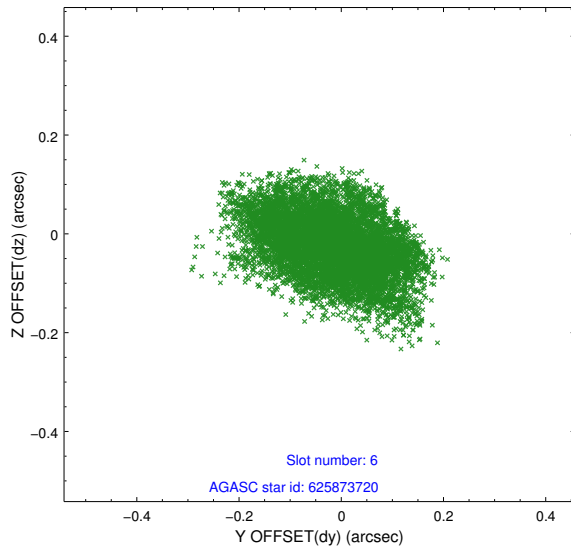
2.4.2 Slot 4



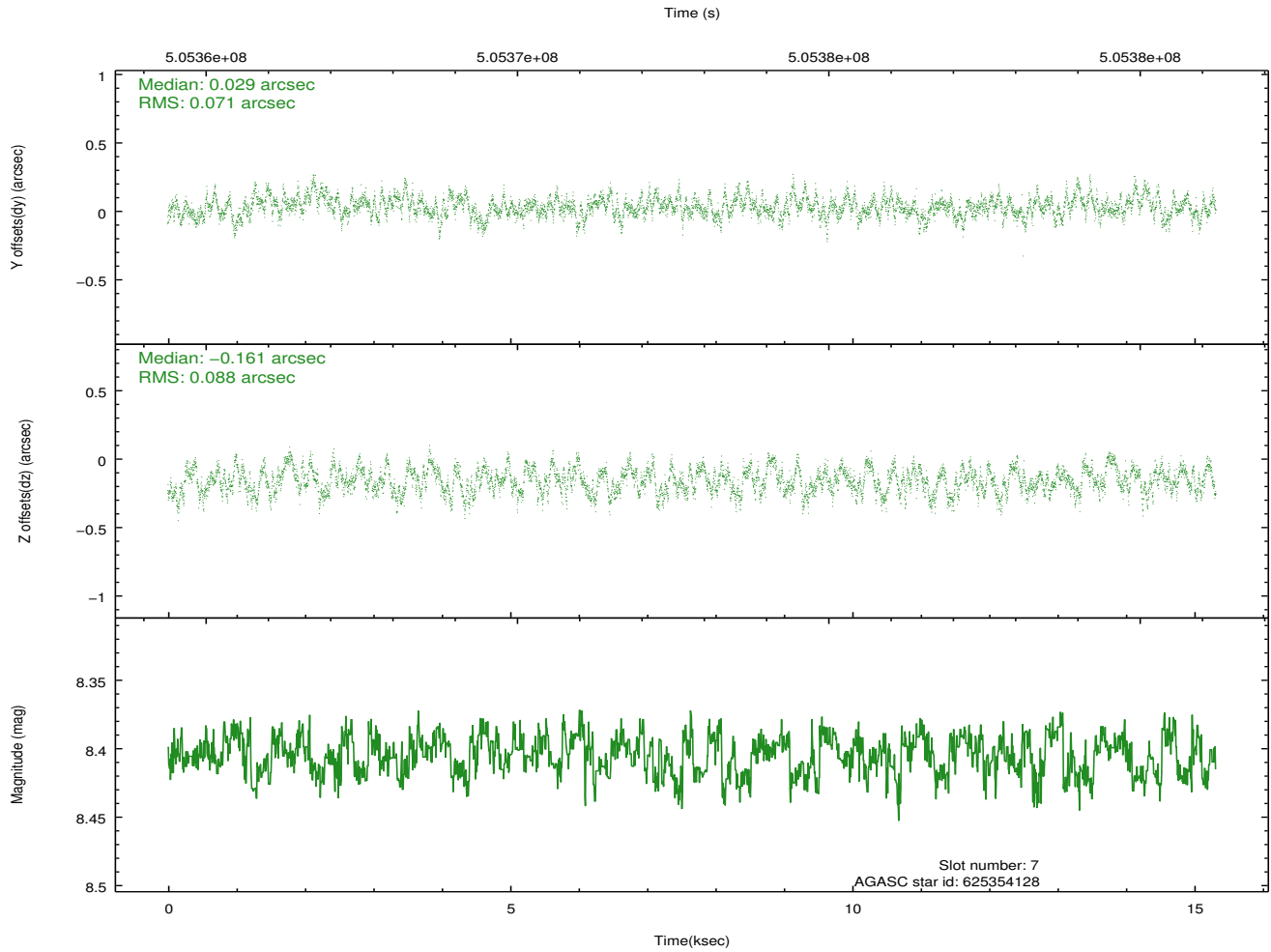
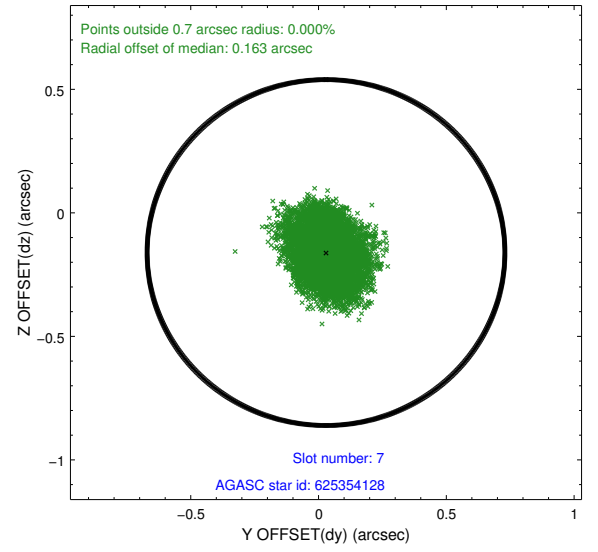
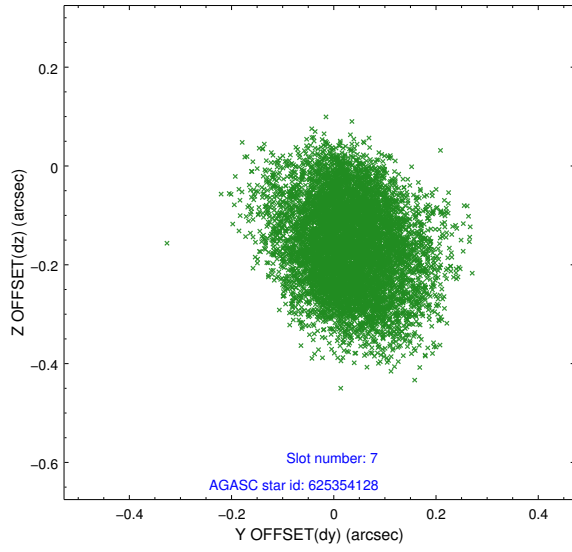
2.4.3 Slot 5



2.4.4 Slot 6

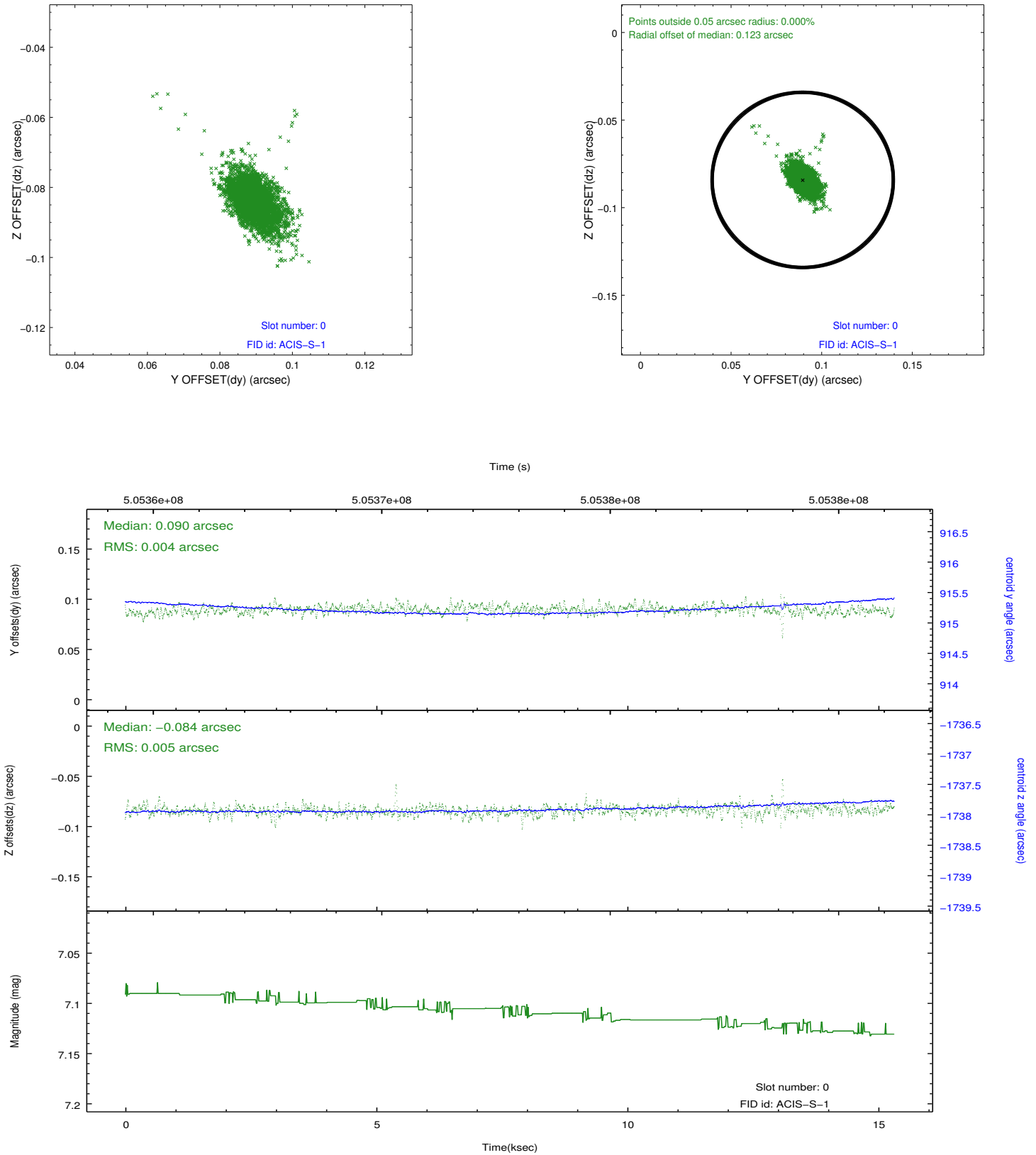


2.4.5 Slot 7

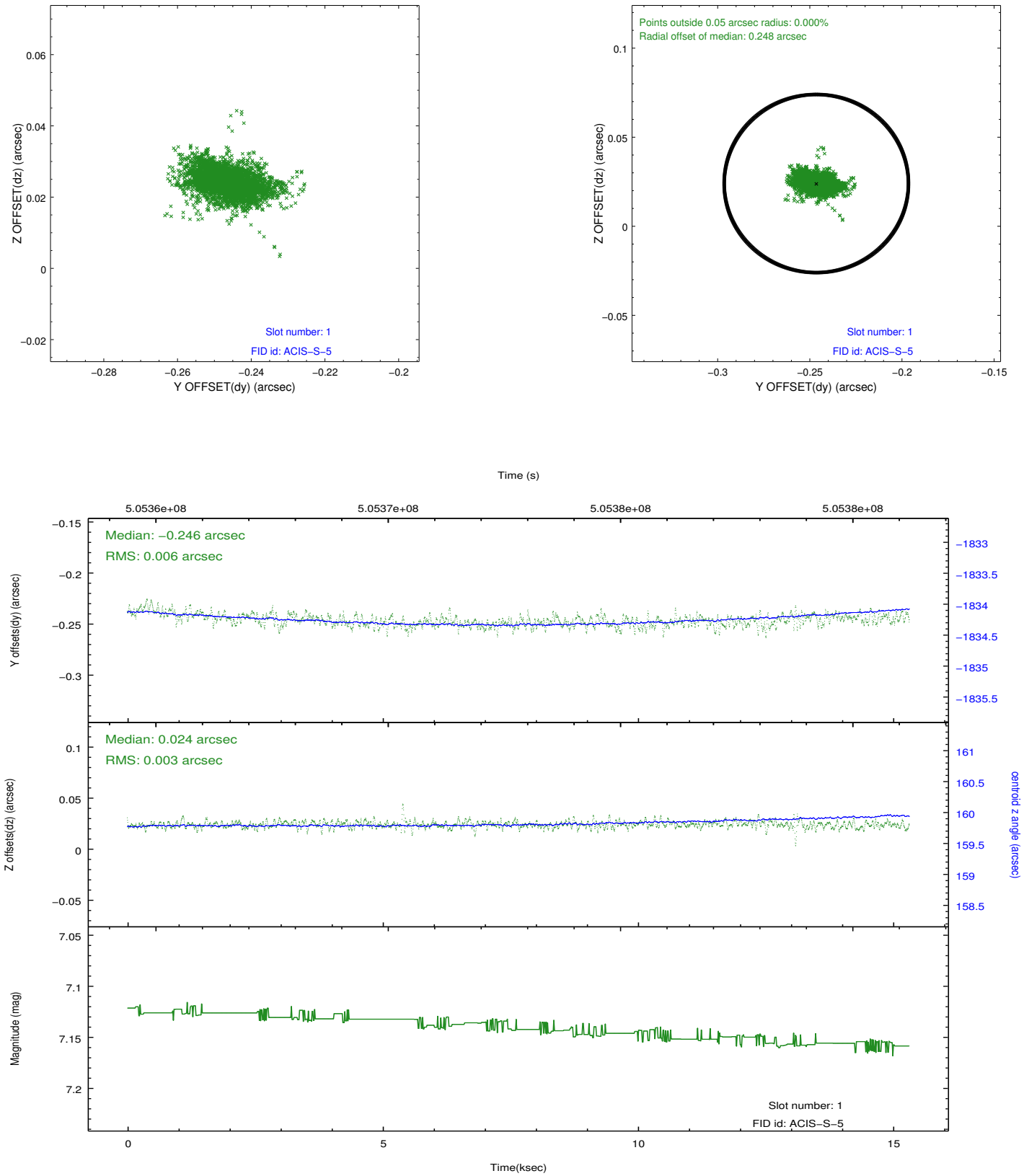


2.5 FID Slots

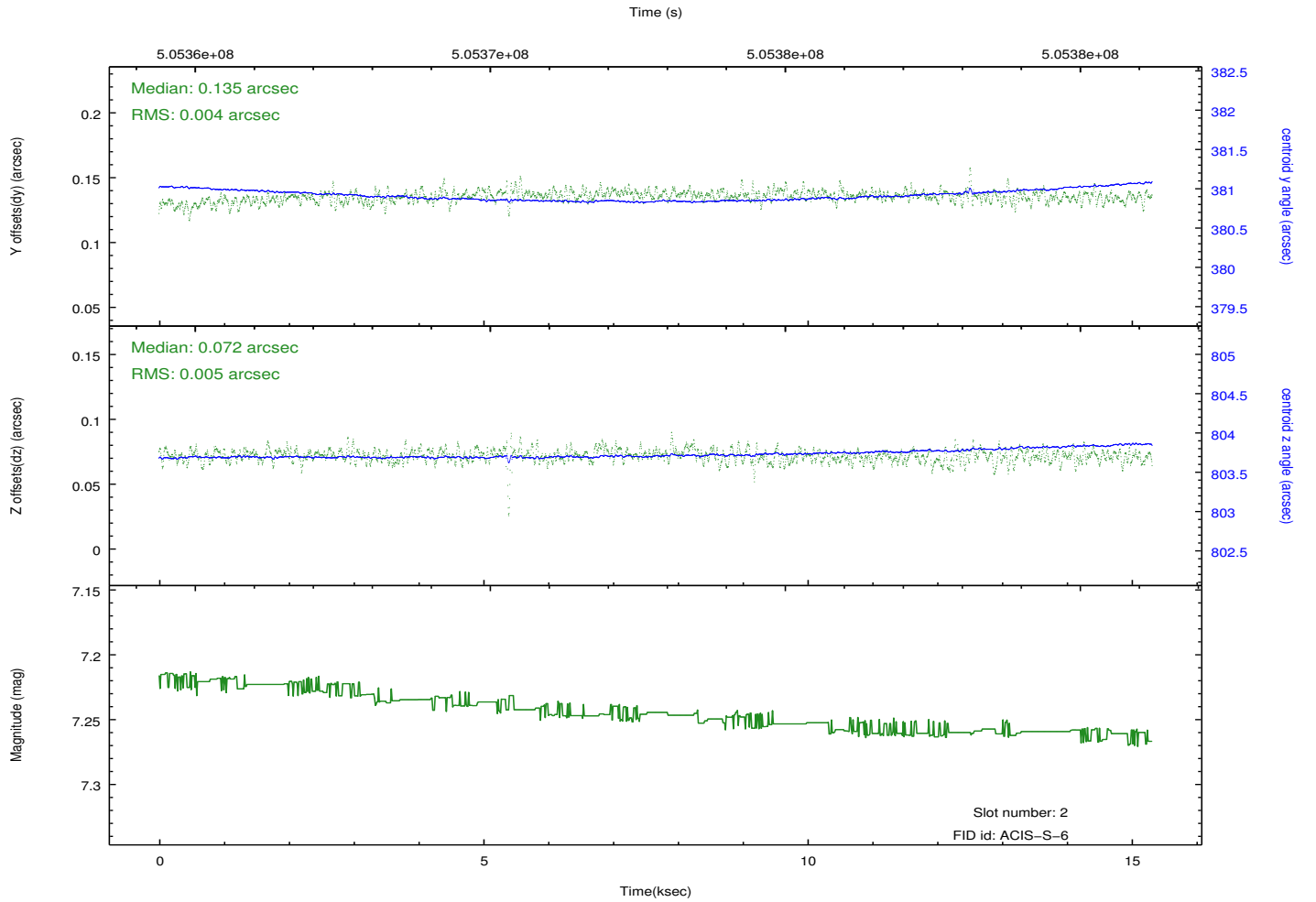
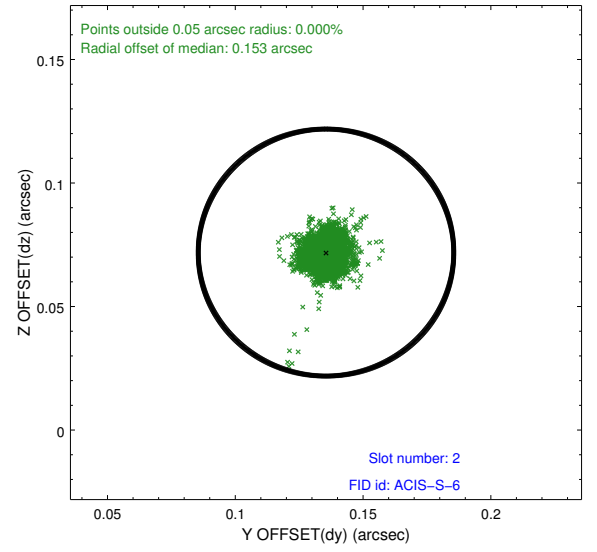
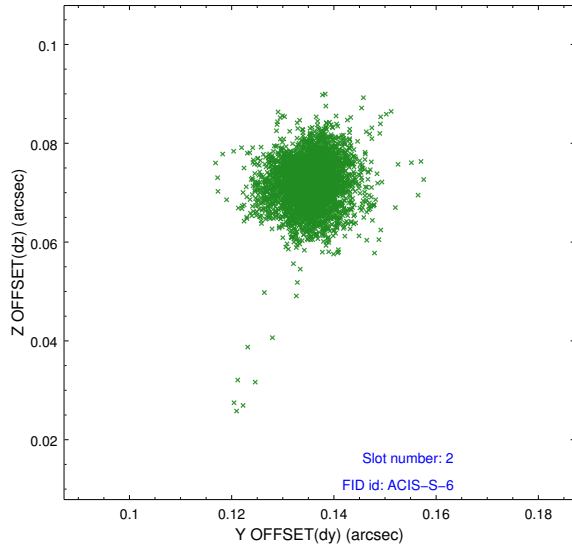
2.5.1 Slot 0



2.5.2 Slot 1



2.5.3 Slot 2



A Summary

A.1 Status

V&V Scientist	Beth Sundheim
V&V Date (YYYY-MM-DD)	2014.12.16
V&V Edition	1
V&V Disposition and Status	OK
V&V Charge Time	15.252000117302

A.2 Comments

Joint proposal with HST.

These data have been reprocessed with new aspect alignment calibration files that correct small mean offsets (up to 0.4 arcsecs) and improve overall astrometric accuracy. The new calibration was determined using data from the time period being reprocessed and was performed using cross-correlation of X-ray sources with radio and optical counterparts.