

V&V Reference Report

L2 ASCDS Version : 10

Observation 14945 - L2 Version 2
Chandra X-Ray Center

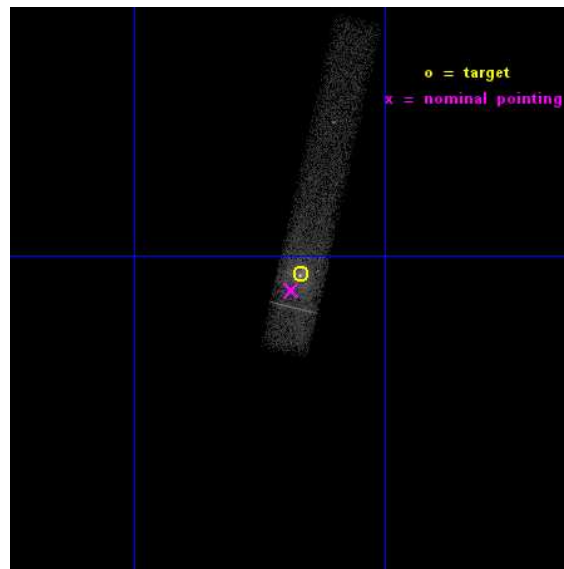
L2 Processing Date : Dec 6 2014

Contents

1	Front	2
2	OBI	3
2.1	OBI	3
2.1.1	Images	3
2.1.2	Bias	3
2.1.3	Parameters	4
2.1.4	Events	4
2.2	Compared Parameters	5
2.3	Aspect	6
2.4	Star Slots	9
2.4.1	Slot 3	9
2.4.2	Slot 4	10
2.4.3	Slot 5	11
2.4.4	Slot 6	12
2.4.5	Slot 7	13
2.5	FID Slots	14
2.5.1	Slot 0	14
2.5.2	Slot 1	15
2.5.3	Slot 2	16
A	Summary	17
A.1	Status	17
A.2	Comments	17

1 Front

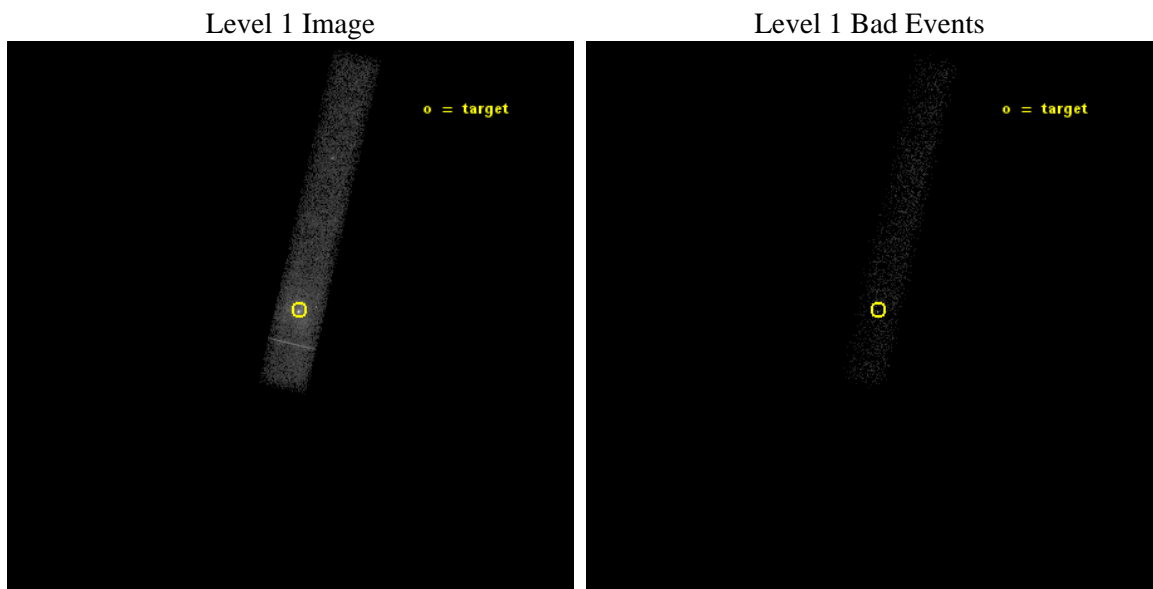
seq_num	601075	Sequence number
obs_id	14945	Observation id
title	Monitoring the Tidal Disruption of a Gas Cloud Approaching Sgr A*	
observer	Dr. Frederick Baganoff	Principal investigator
object	Sgr A*	Source name
dtcycle	0	
cycle	P	events from which exps? Prim/Second/Both
ra_targ	266.416667	Observer's specified target RA [deg]
dec_targ	-29.007806	Observer's specified target Dec [deg]
ra_nom	266.42143436952	Nominal RA [deg]
dec_nom	-29.014497451147	Nominal Dec [deg]
roll_nom	283.15893811317	Nominal Roll [deg]
revision	2	Processing version of data
ontime	20069.198803782	Sum of GTIs [s]
livetime	18201.703975859	Livetime [s]
ontime7	20069.198803782	Sum of GTIs [s]
l2events	27194	Number of level 2 events



2 OBI

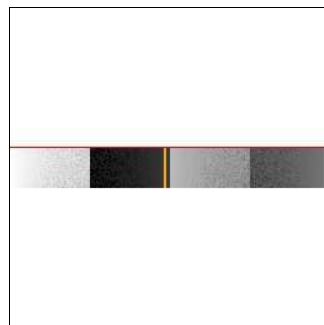
2.1 OBI

2.1.1 Images



2.1.2 Bias

Chip 7



2.1.3 Parameters

obi_num	0	Obi number	sched_exp_time	20000.000000	[s] Scheduled observation exposure time
ascdsver	10.3.1	Processing system revision	ontime	20069.198803782	Sum of GTIs [s]
caldsver	4.6.4	 	ontime7	20069.198803782	Sum of GTIs [s]
date	2014-12-06T07:45:04	Date and time of file creation	l1events	36886	Number of level 1 events
revision	2	Processing version of data			

2.1.4 Events

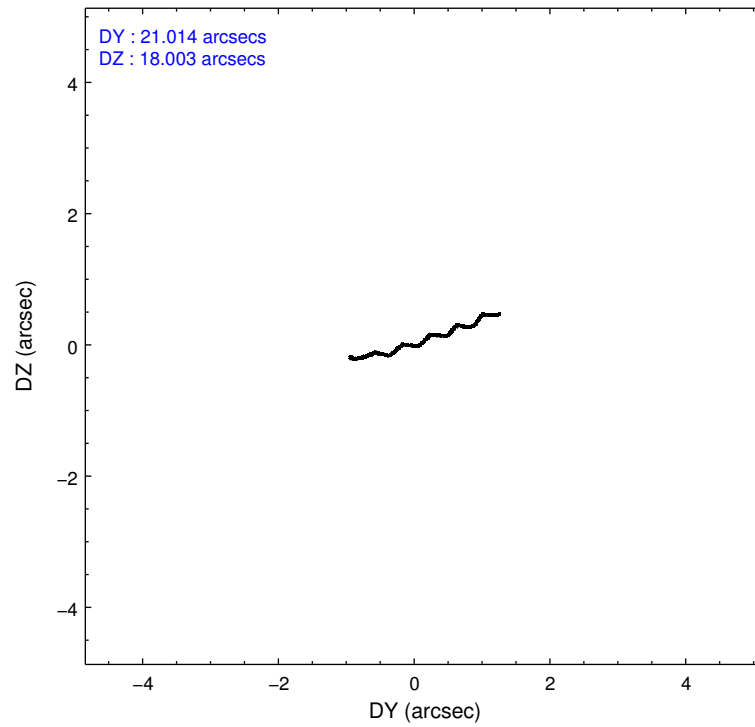
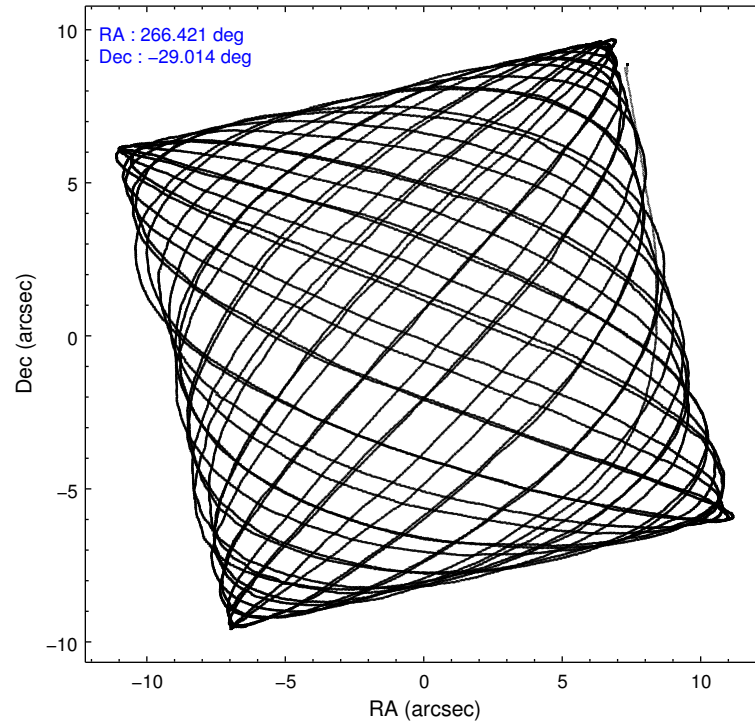
	ccd 7
level 1 events	36886
rejected events	9166
rejected %	24%

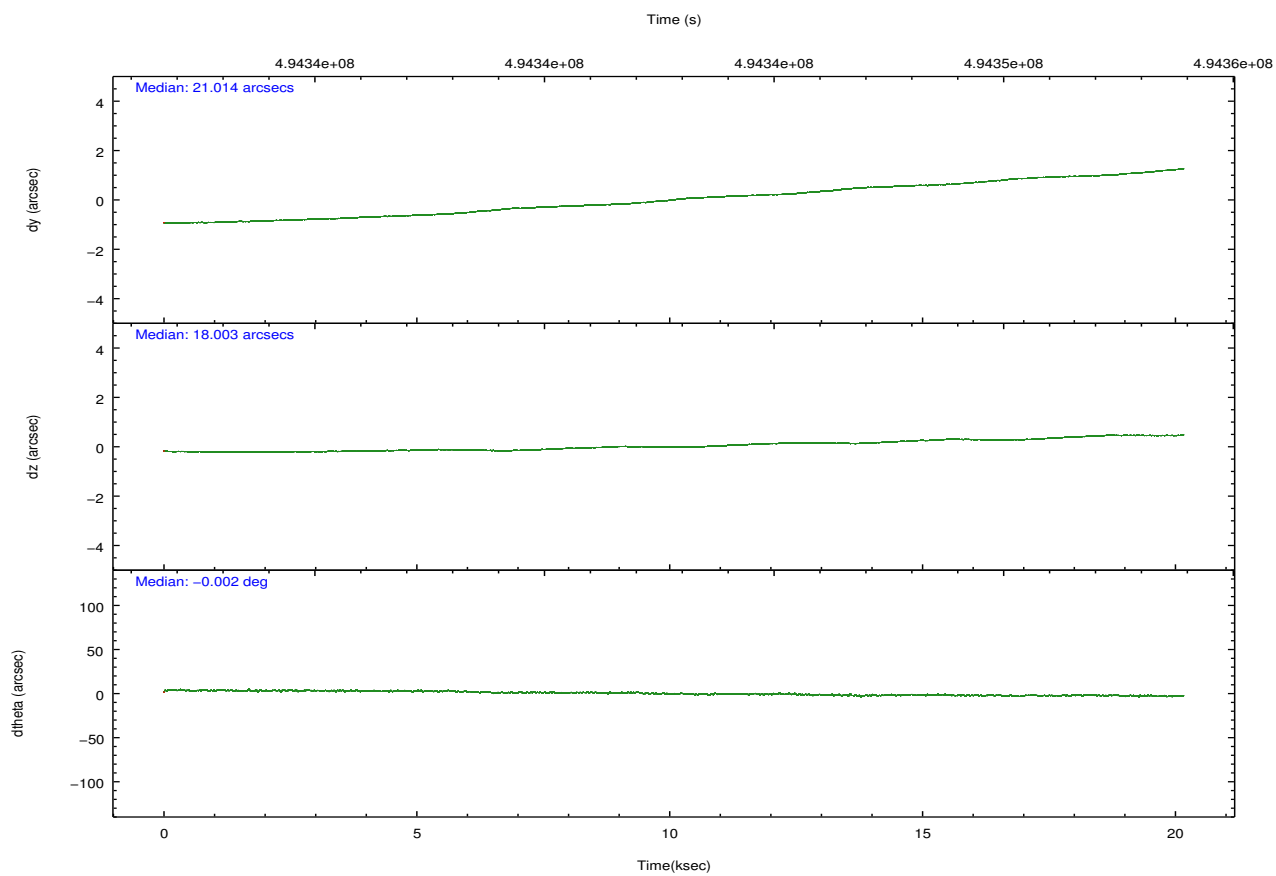
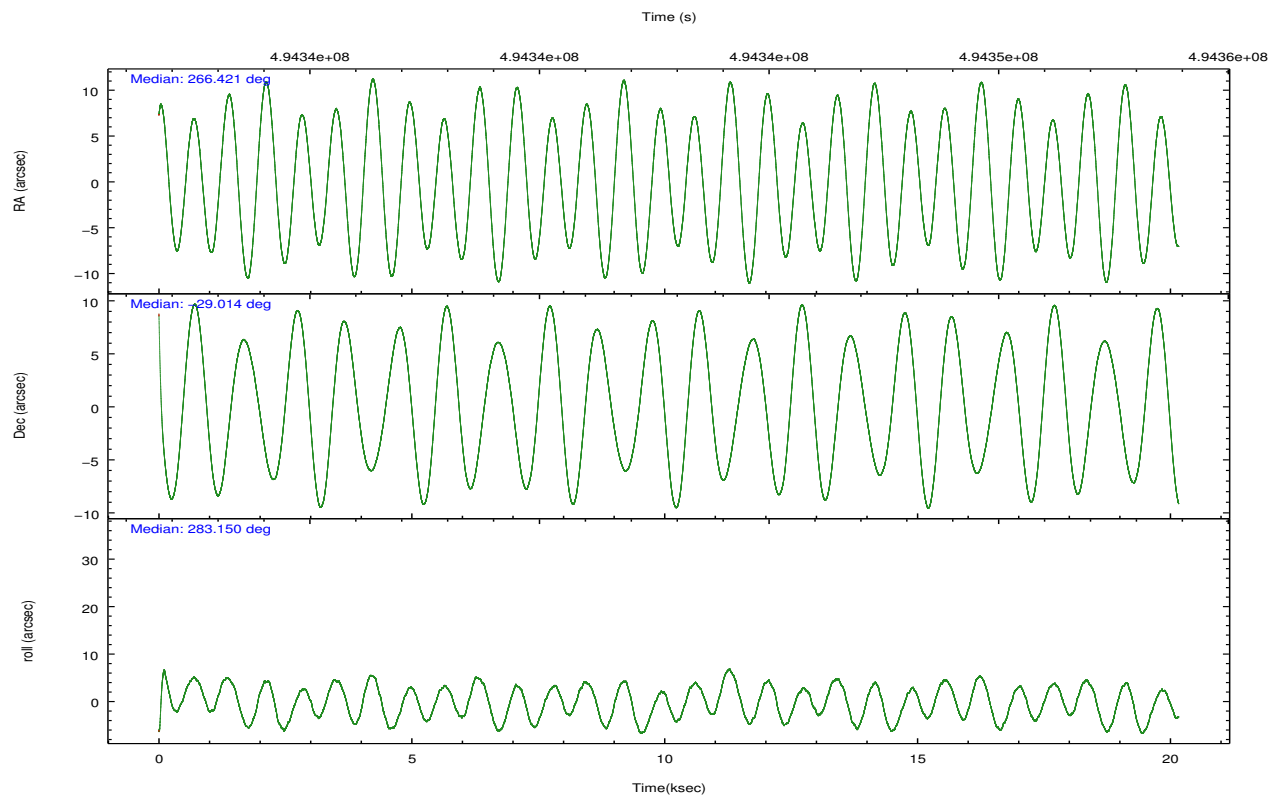
	ccd 7
grade 0 events	4627
	12%
grade 1 events	45
	0%
grade 2 events	6160
	16%
grade 3 events	3091
	8%
grade 4 events	3189
	8%
grade 5 events	1907
	5%
grade 6 events	10653
	28%
grade 7 events	7214
	19%

2.2 Compared Parameters

Parameter	Planned	Actual	Parameter	Planned	Actual
Instrument	ACIS	ACIS	Obspar format version number	7	7
Detector	ACIS-7	ACIS-7	Obspar file type	PREDICTED	ACTUAL
Grating	NONE	NONE	Obspar update status	NONE	UPDATED
Data mode	FAINT	FAINT	Number of optional ACIS chips dropped	0	0
Observation mode	POINTING	POINTING	On-chip summing requested	N	N
[deg] Pointing RA	266.399742	266.4214343695203	Subarray requested	CUSTOM	1/8
[deg] Pointing Dec	-28.994801	-29.01449745114677	Subarray start row	449	449
[deg] Pointing Roll	282.991795	283.1589381131733	Subarray row count	128	128
[s] Window start time (MET)	493344067.184000	493344067.184000	Alternating exposures requested	N	N
[s] Window stop time (MET)	494553667.184000	494553667.184000	[s] Primary exposure time	0.000000	0.4
[mm] SIM focus pos	-0.684267	-0.6828225247311905			
[mm] SIM defocus	0	0.001444936568705701			
[mm] SIM translation stage pos	-190.132523	-190.145094680475			
[mm] SIM translation stage offset	0	0.01257209746719923			
[s] Observation start time (MET)	494332899.184000	494331166.05169			
Observation start date	2013-08-31T10:40:32	2013-08-31T10:12:46			
[s] Observation end time (MET)	494352899.184000	494353712.97792			
Observation end date	2013-08-31T16:13:52	2013-08-31T16:28:32			
Read mode	TIMED	TIMED			

2.3 Aspect



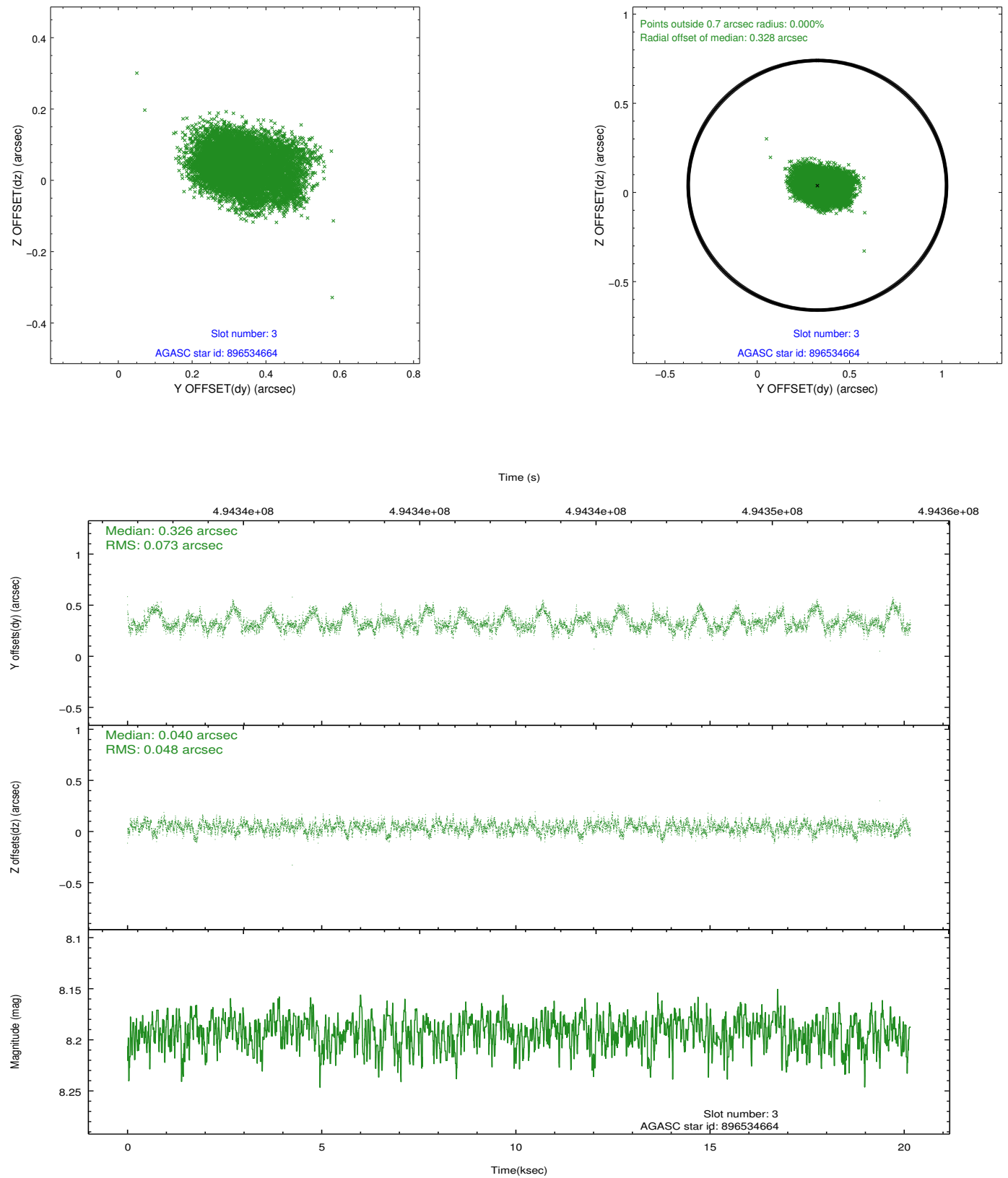


Slot Statistics

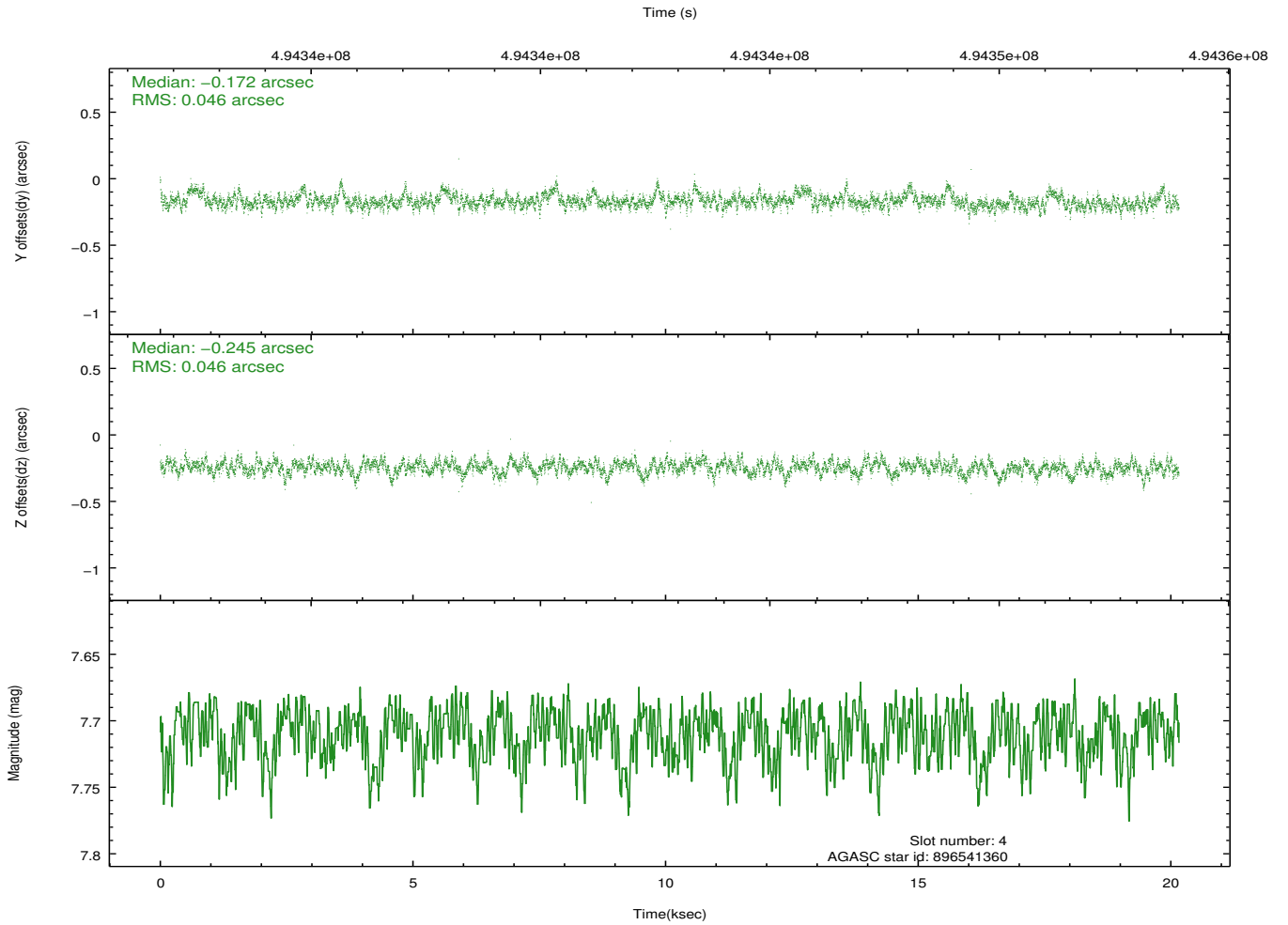
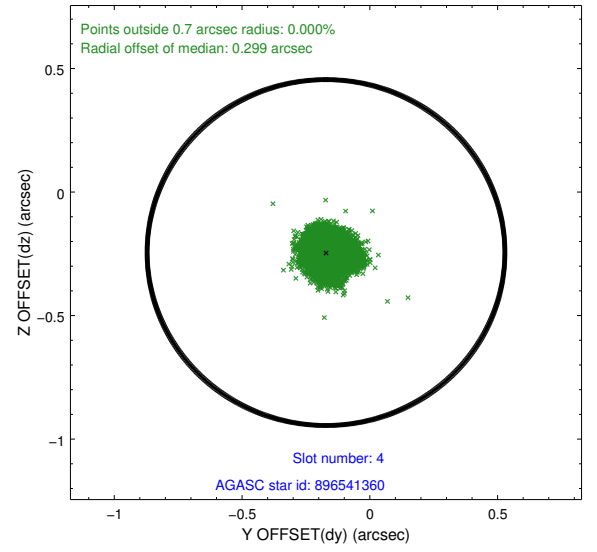
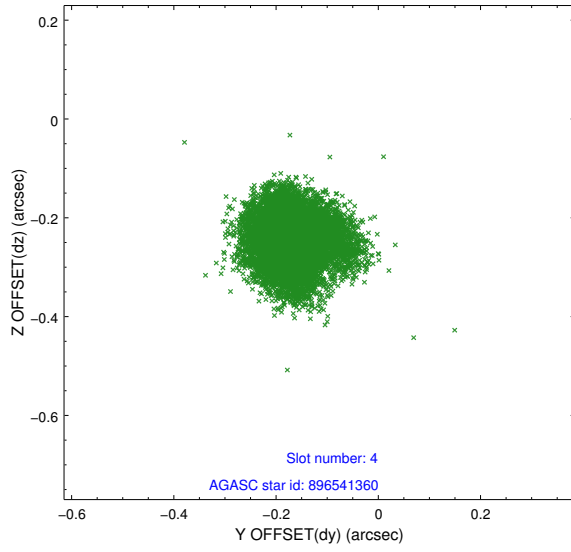
slot	status	used	id	mag	n_pts	med_dy	med_dz	dr1	dr2	ra	dec	mean_y	mean_z
0	FID		ACIS-S-1	7.06	4919	0.068	0.012	0.013	0.030	0.000000	0.000000	921.83	-1735.08
1	FID		ACIS-S-2	6.98	4919	-0.208	-0.090	0.009	0.014	0.000000	0.000000	-774.25	-1739.83
2	FID		ACIS-S-4	7.07	4919	0.114	0.081	0.015	0.022	0.000000	0.000000	2139.14	168.89
3	GUIDE	used	896534664	8.19	9833	0.326	0.040	0.092	0.156	266.405570	-28.407461	-2055.40	493.20
4	GUIDE	used	896541360	7.71	9837	-0.172	-0.245	0.069	0.112	266.684478	-29.453744	1811.66	498.29
5	GUIDE	used	896541576	8.18	9837	-0.223	0.014	0.127	0.190	267.051055	-28.762912	-345.75	2189.37
6	GUIDE	used	896403520	9.00	9822	0.328	0.142	0.122	0.220	265.626481	-28.748780	-1402.84	-2180.54
7	GUIDE	used	896540808	7.45	9833	-0.267	0.031	0.047	0.077	265.985401	-29.308604	810.93	-1521.82

2.4 Star Slots

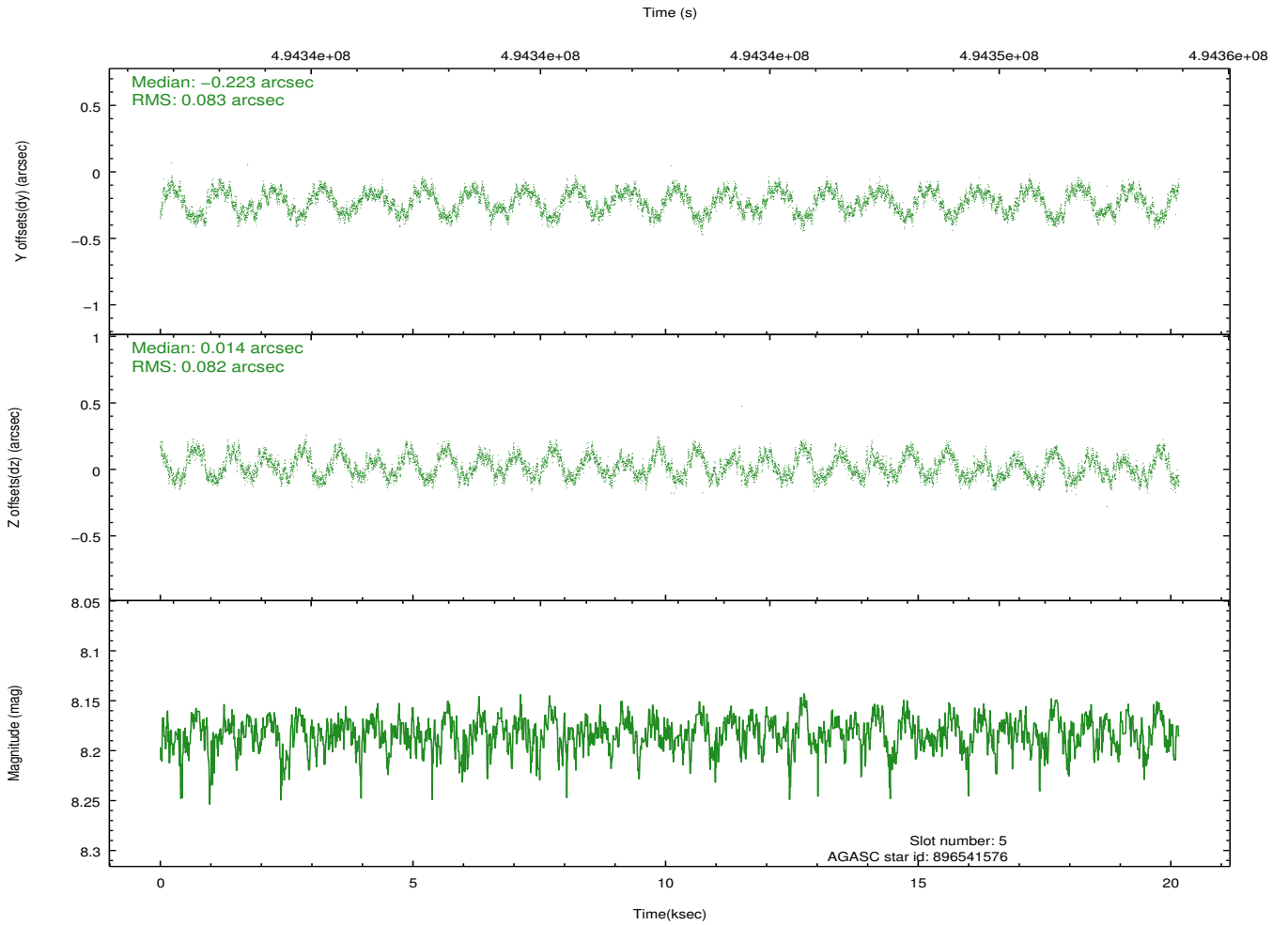
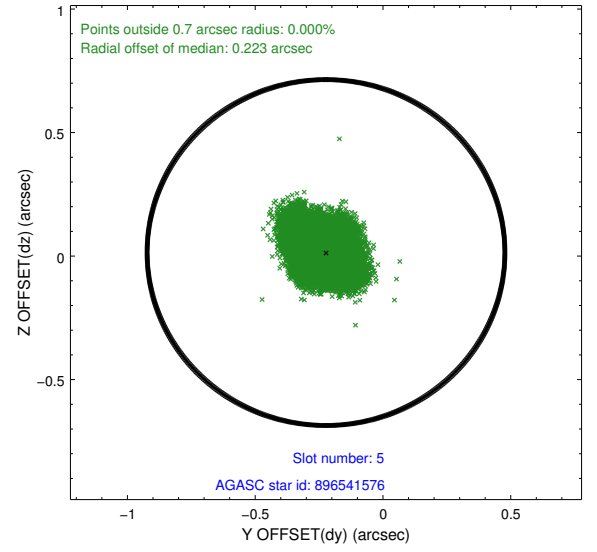
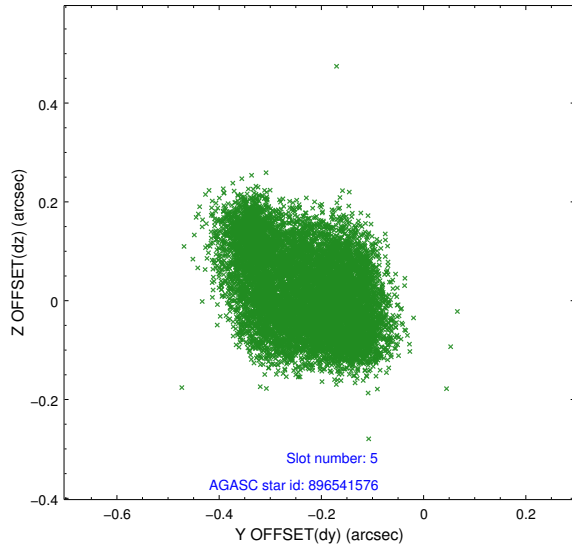
2.4.1 Slot 3



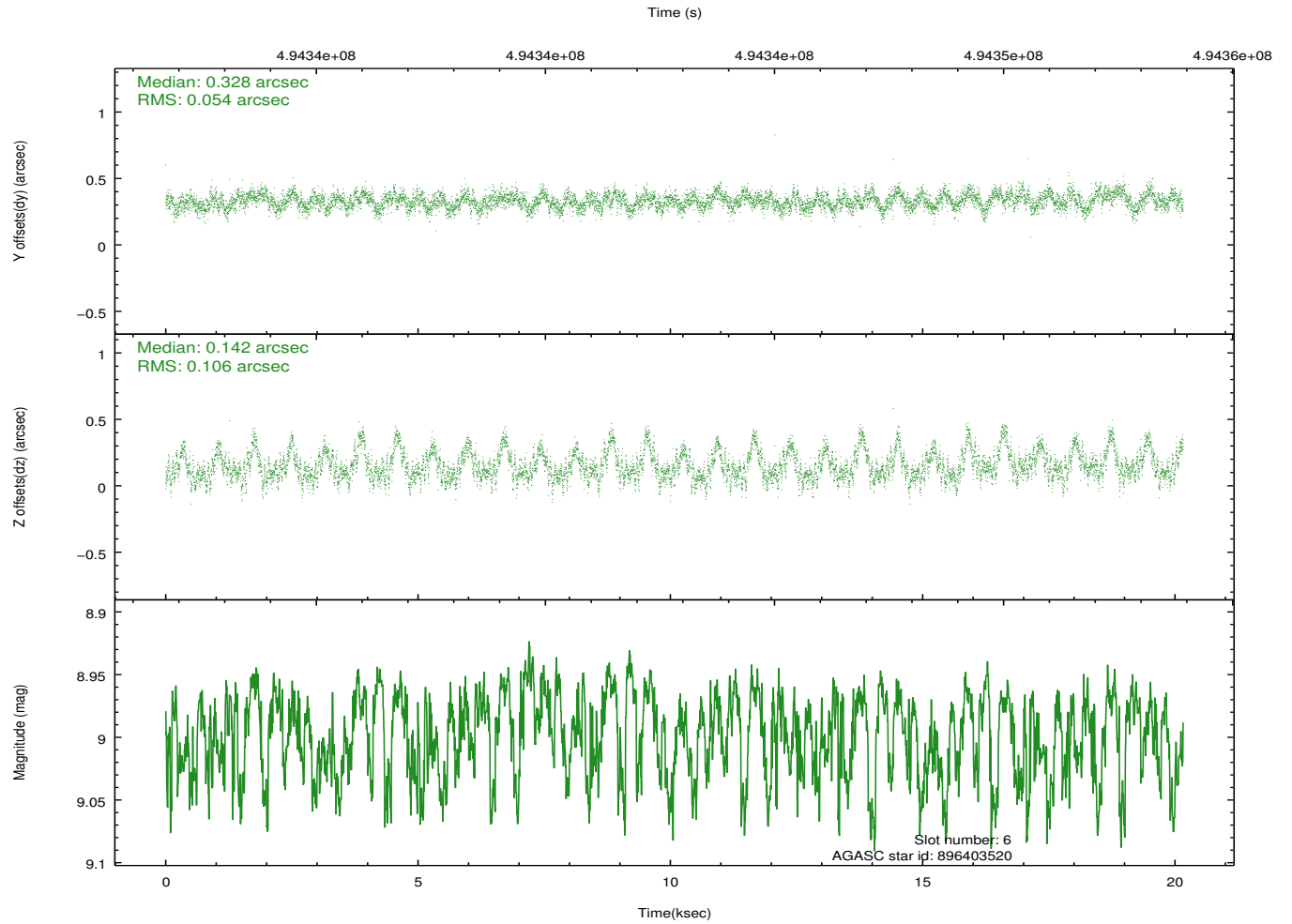
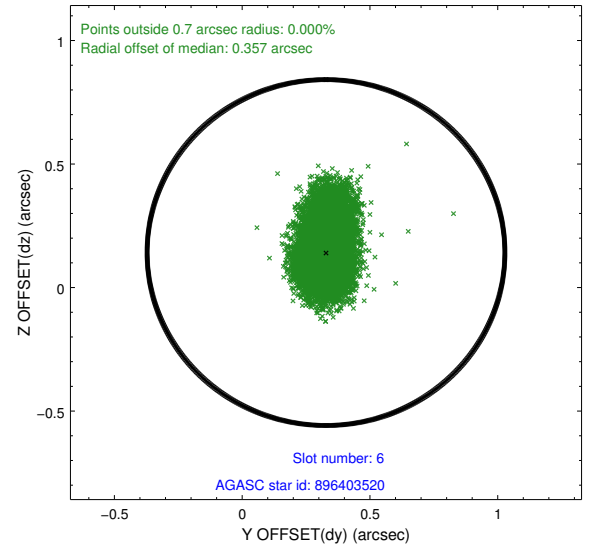
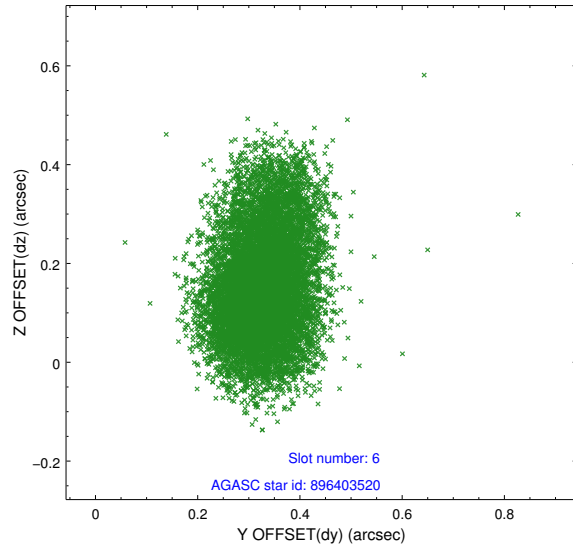
2.4.2 Slot 4



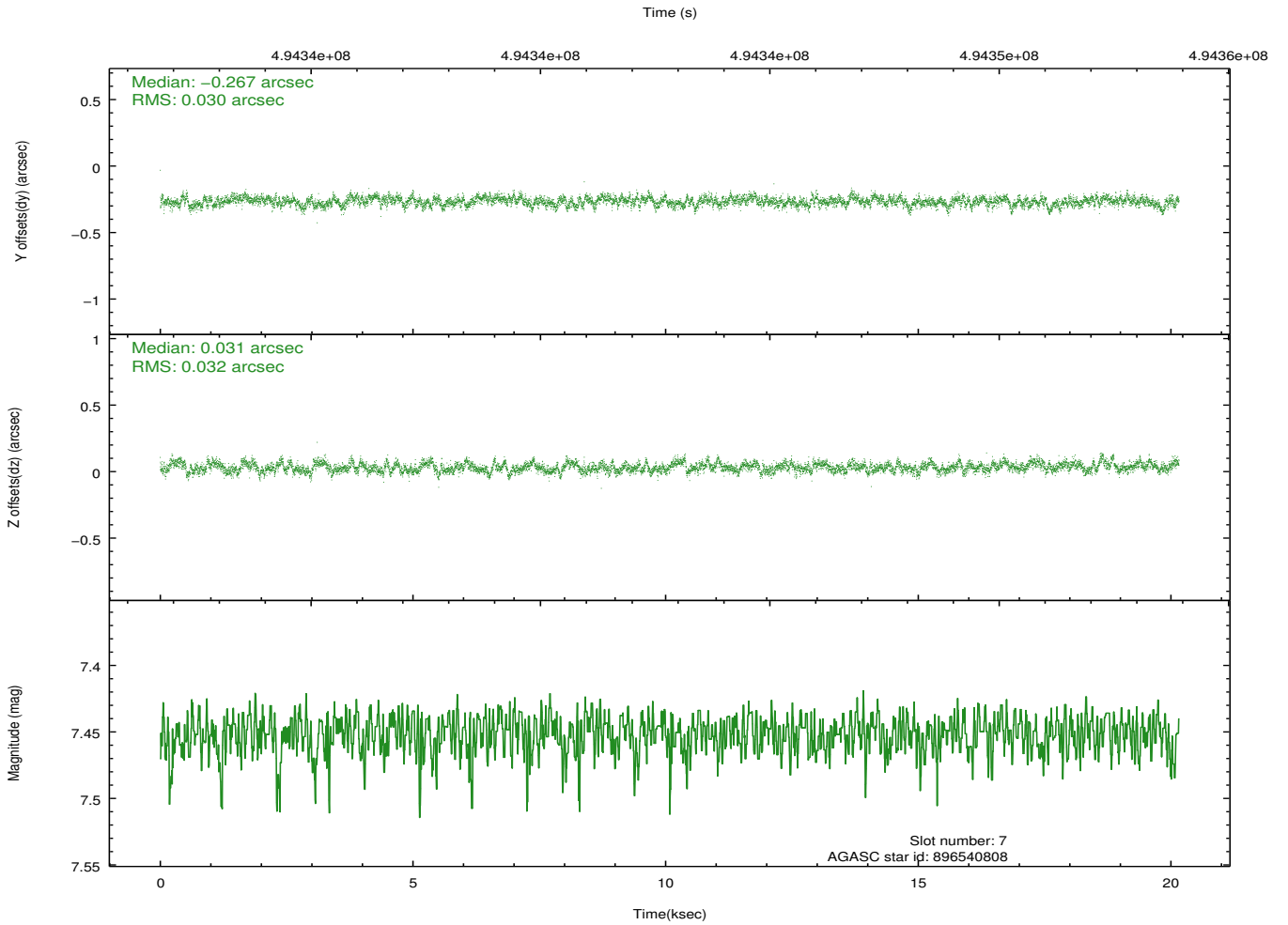
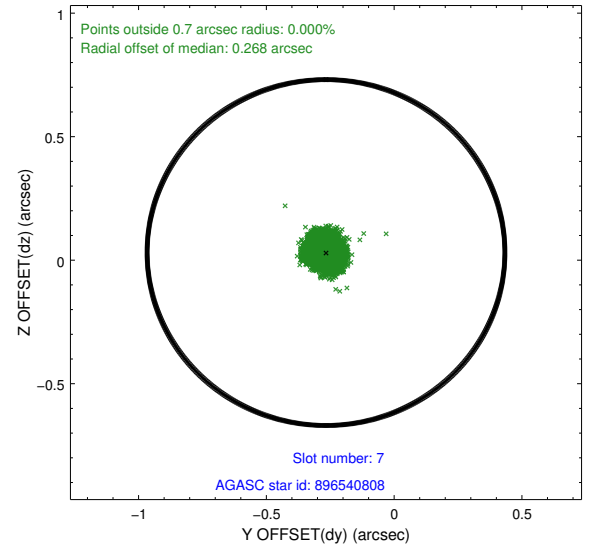
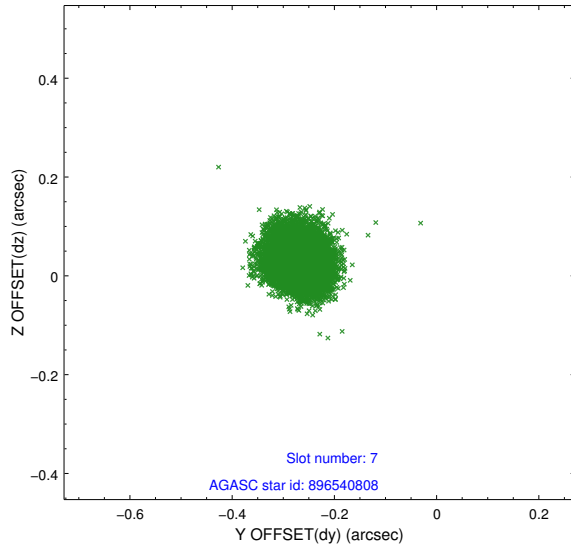
2.4.3 Slot 5



2.4.4 Slot 6

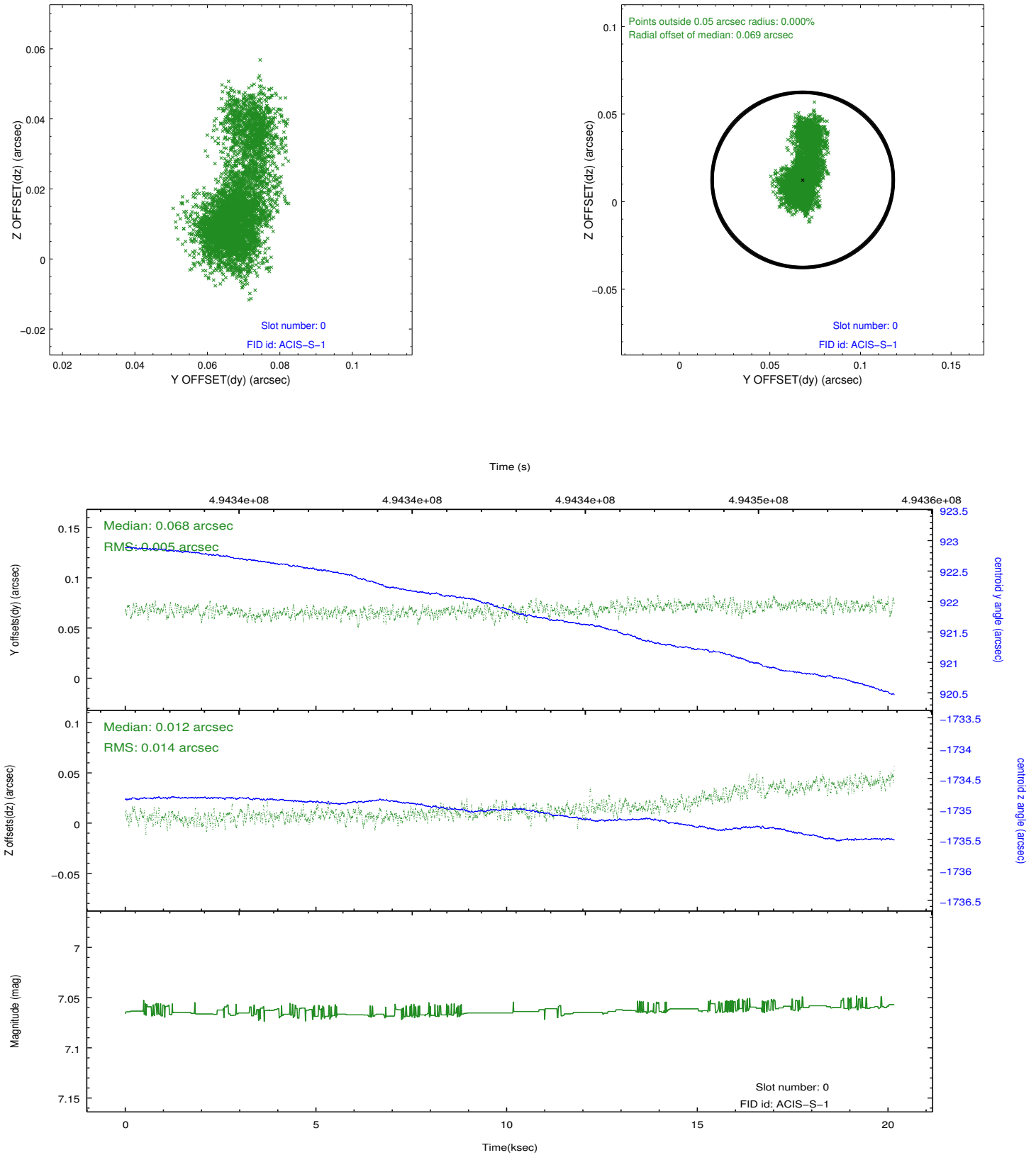


2.4.5 Slot 7

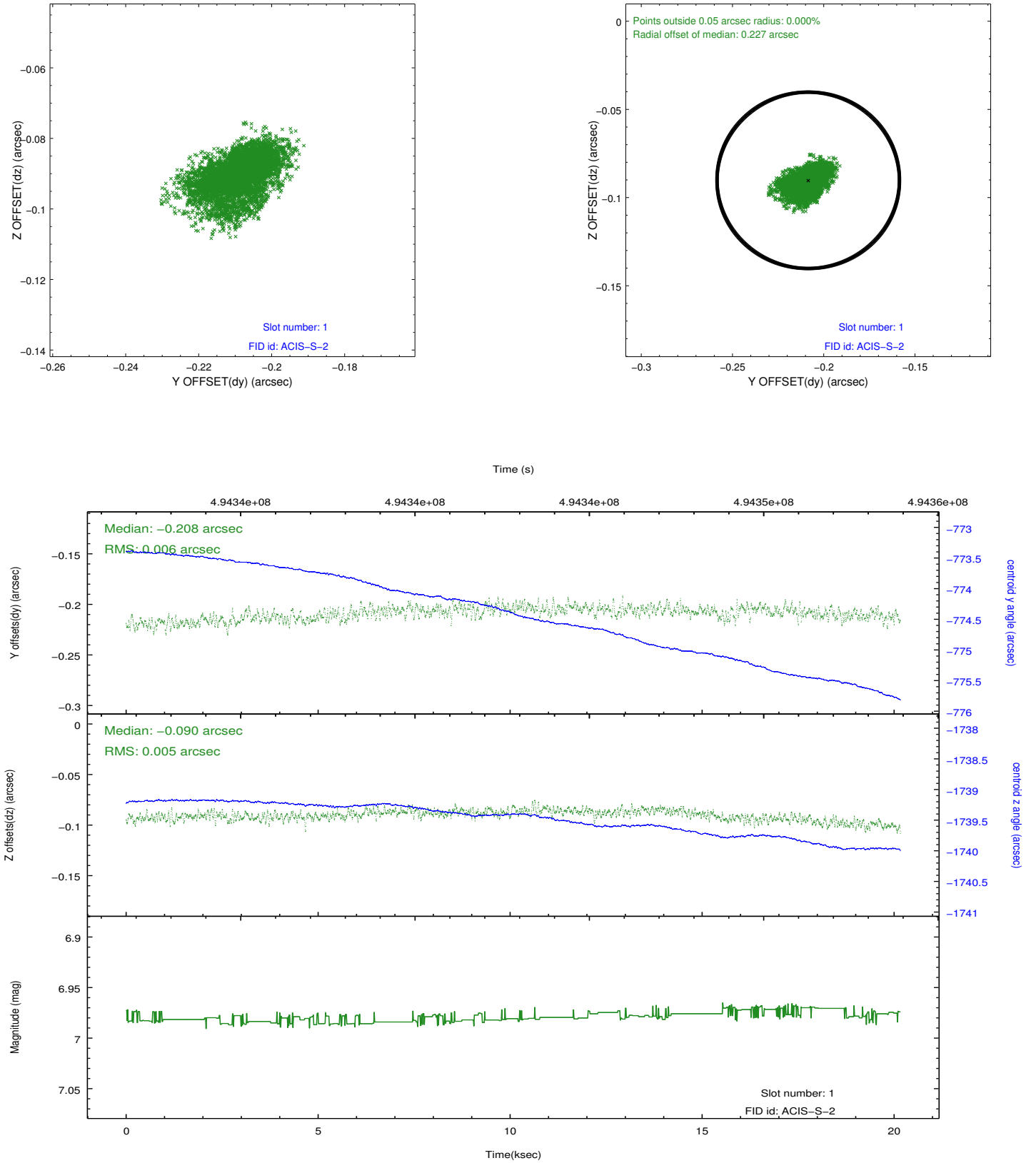


2.5 FID Slots

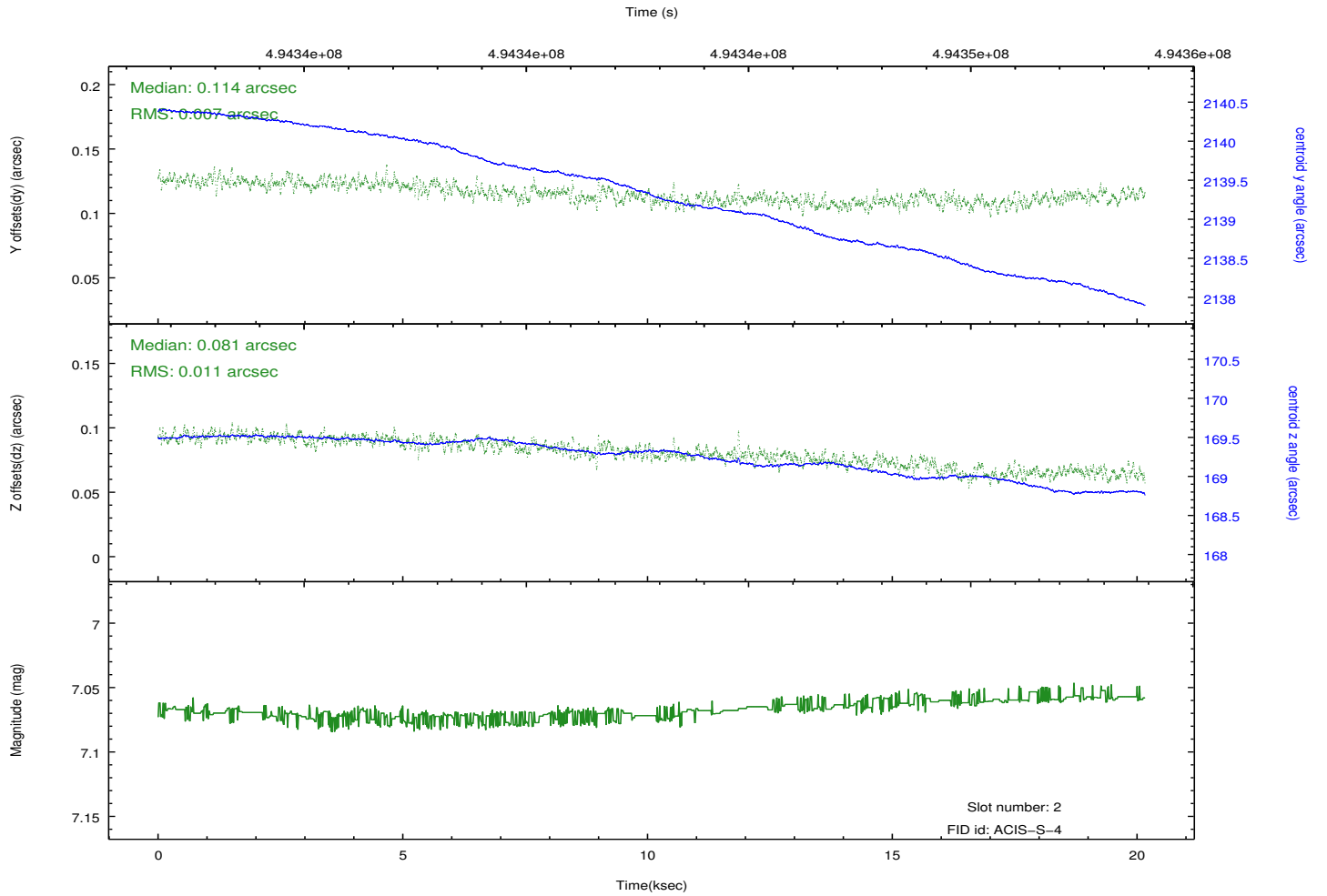
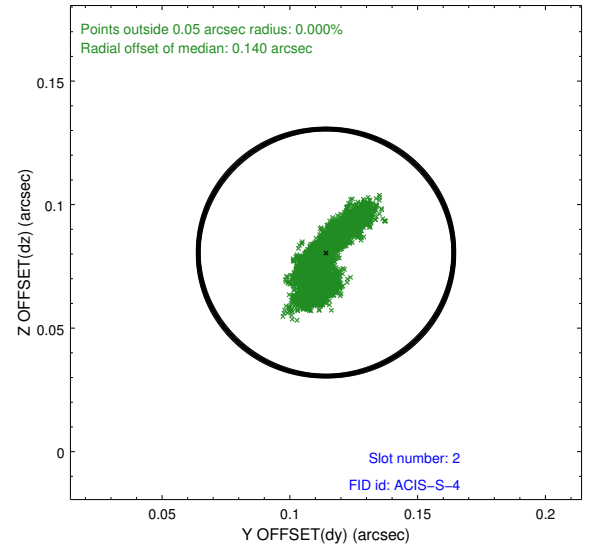
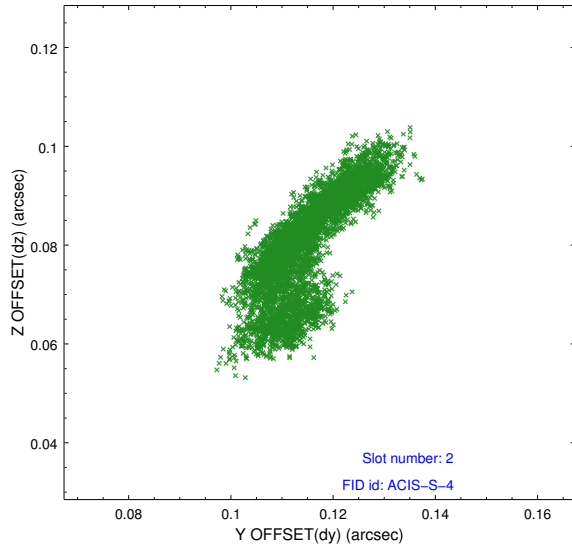
2.5.1 Slot 0



2.5.2 Slot 1



2.5.3 Slot 2



A Summary

A.1 Status

V&V Scientist	Jen Lauer
V&V Date (YYYY-MM-DD)	2014.12.12
V&V Edition	1
V&V Disposition and Status	OK
V&V Charge Time	20.069198803782

A.2 Comments

Window constraint met. Roll preference met.

=====

These data have been reprocessed with new aspect alignment calibration files that correct small mean offsets (up to 0.4 arcsecs) and improve overall astrometric accuracy. The new calibration was determined using data from the time period being reprocessed and was performed using cross-correlation of X-ray sources with radio and optical counterparts.