

V&V Reference Report

L2 ASCDS Version : 8.5.1.1

Observation 14640 - L2 Version 2
Chandra X-Ray Center

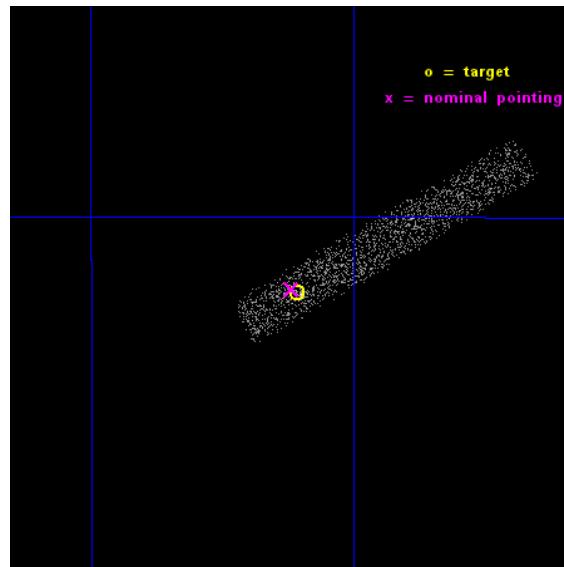
L2 Processing Date : Dec 2 2014

Contents

1	Front	2
2	OBI	3
2.1	OBI	3
2.1.1	Images	3
2.1.2	Bias	3
2.1.3	Parameters	4
2.1.4	Events	4
2.2	Compared Parameters	5
2.3	Aspect	6
2.4	Star Slots	9
2.4.1	Slot 3	9
2.4.2	Slot 4	10
2.4.3	Slot 5	11
2.4.4	Slot 6	12
2.4.5	Slot 7	13
2.5	FID Slots	14
2.5.1	Slot 0	14
2.5.2	Slot 1	15
2.5.3	Slot 2	16
A	Summary	17
A.1	Status	17
A.2	Comments	17

1 Front

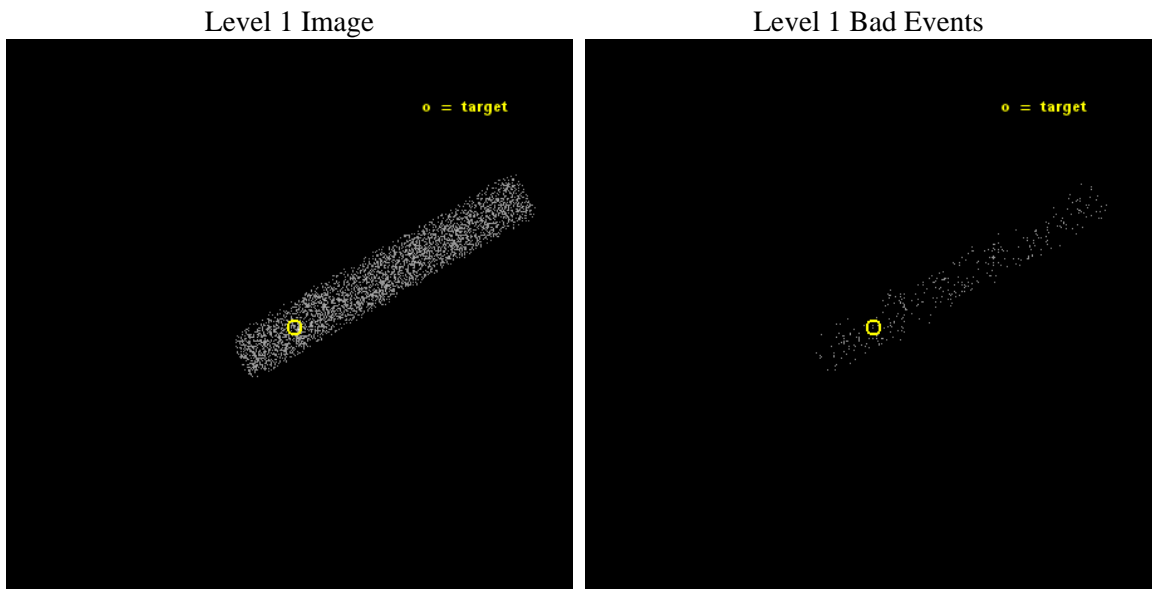
seq_num	401473	Sequence number
obs_id	14640	Observation id
title	A snap-shot survey of Galactic neutron-star Be/X-ray transients in quiescence	Proposal title
observer	Dr. Rudy Wijnands	Principal investigator
object	2S 1417-624	Source name
dtcycle	0	
cycle	P	events from which exps? Prim/Second/Both
ra_targ	215.303333	Observer's specified target RA [deg]
dec_targ	-62.698333	Observer's specified target Dec [deg]
ra_nom	215.30917572996	Nominal RA [deg]
dec_nom	-62.696899114427	Nominal Dec [deg]
roll_nom	330.7970651273	Nominal Roll [deg]
revision	2	Processing version of data
ontime	5069.9438935518	Sum of GTIs [s]
livetime	4598.1714978703	Livetime [s]
ontime7	5069.9438935518	Sum of GTIs [s]
l2events	2289	Number of level 2 events



2 OBI

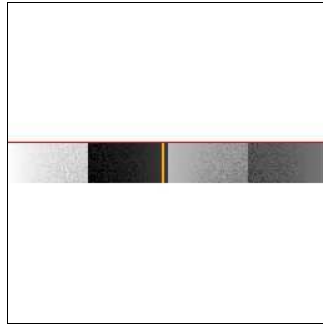
2.1 OBI

2.1.1 Images



2.1.2 Bias

Chip 7



2.1.3 Parameters

obi_num	0	Obi number	sched_exp_time	5000.000000	[s] Scheduled observation exposure time
ascdsver	10.3	Processing system revision	ontime	5069.9438935518	Sum of GTIs [s]
caldsver	4.6.4	 	ontime7	5069.9438935518	Sum of GTIs [s]
date	2014-12-03T03:54:09	Date and time of file creation	l1events	4728	Number of level 1 events
revision	2	Processing version of data			

2.1.4 Events

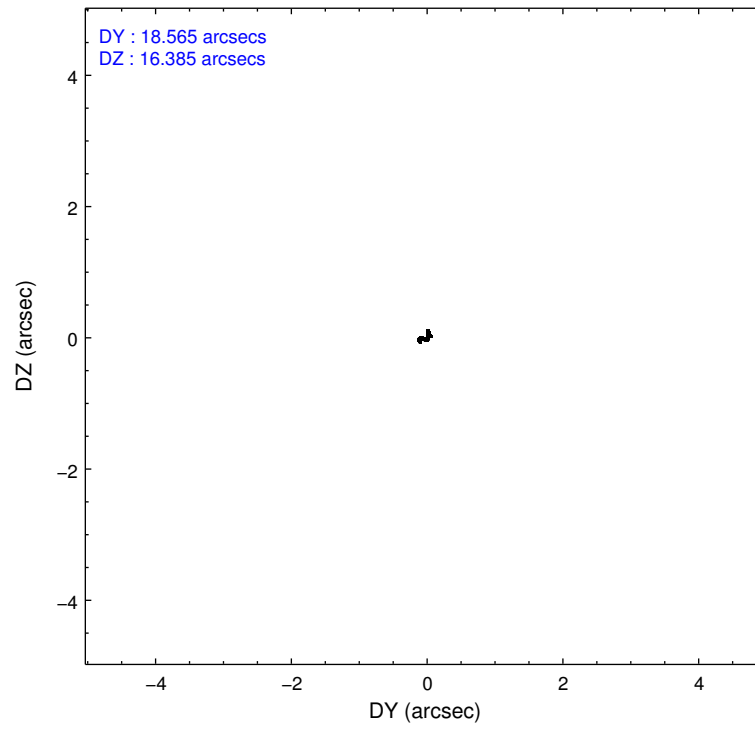
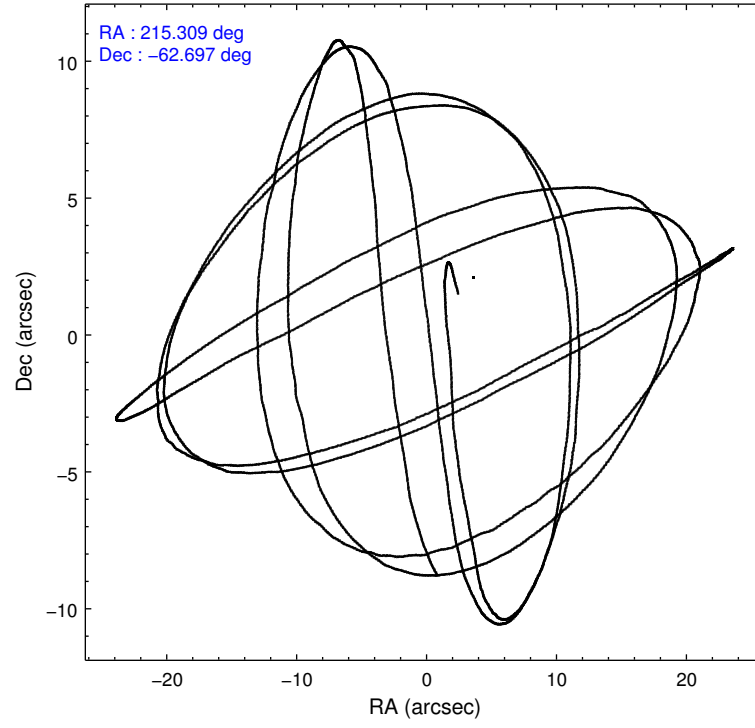
	ccd 7
level 1 events	4728
rejected events	2352
rejected %	49%

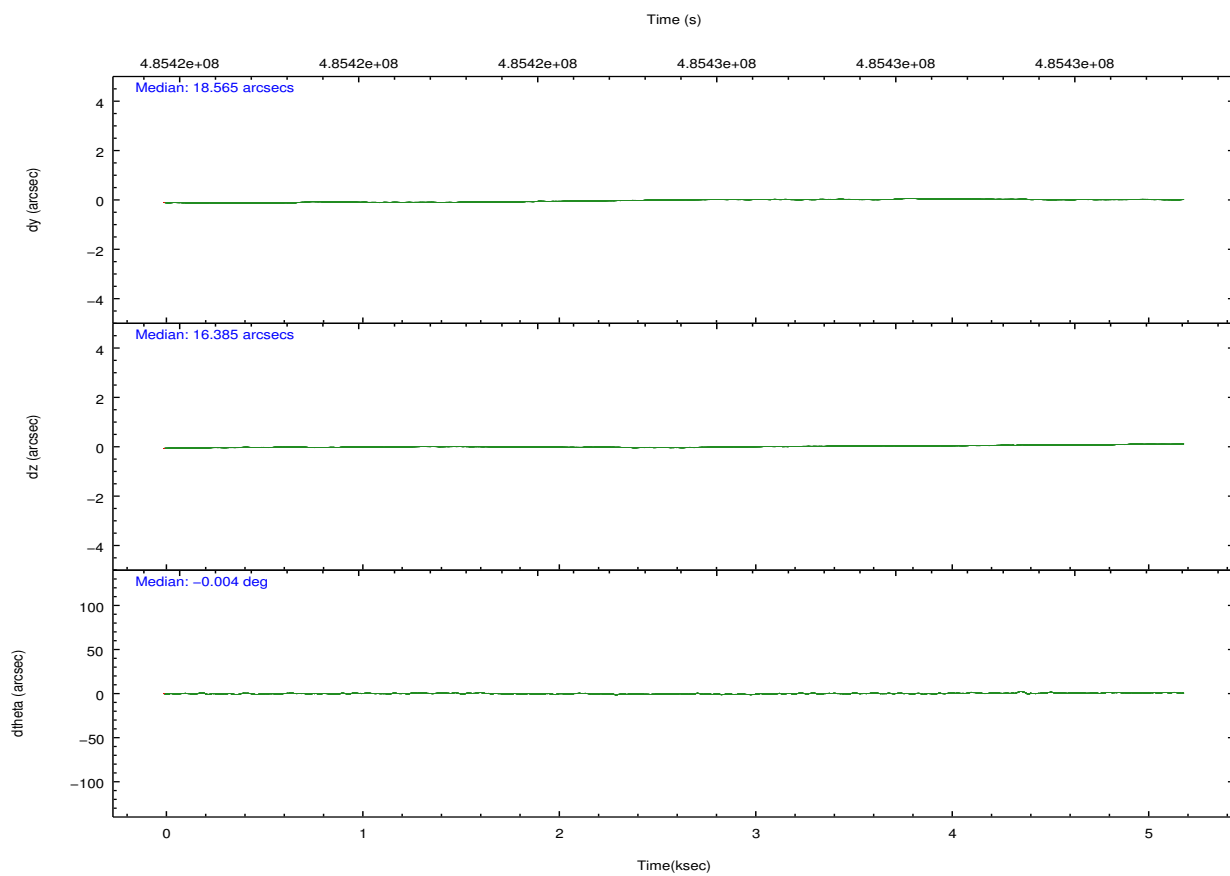
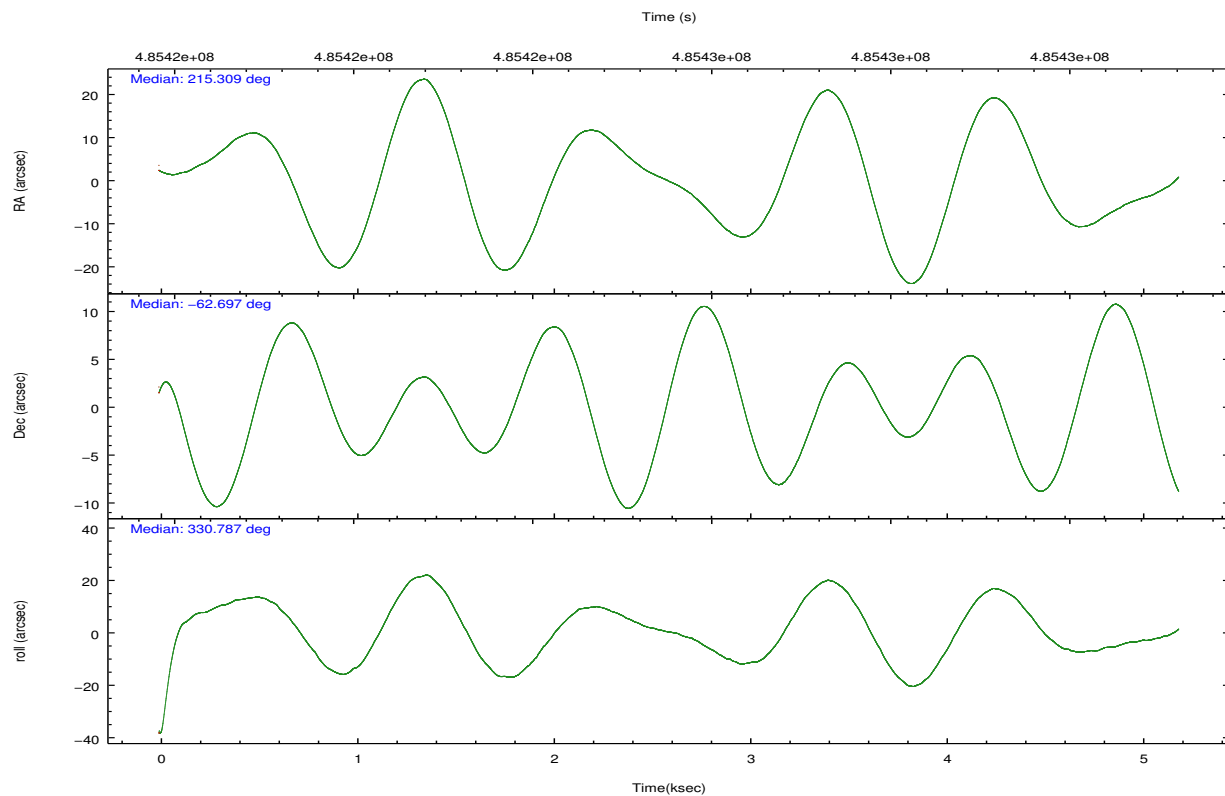
	ccd 7
grade 0 events	257
	5%
grade 1 events	7
	0%
grade 2 events	491
	10%
grade 3 events	330
	6%
grade 4 events	282
	5%
grade 5 events	448
	9%
grade 6 events	1016
	21%
grade 7 events	1897
	40%

2.2 Compared Parameters

Parameter	Planned	Actual	Parameter	Planned	Actual
Instrument	ACIS	ACIS	Obspar format version number	7	7
Detector	ACIS-7	ACIS-7	Obspar file type	PREDICTED	ACTUAL
Grating	NONE	NONE	Obspar update status	NONE	UPDATED
Data mode	FAINT	FAINT	Number of optional ACIS chips dropped	0	0
Observation mode	POINTING	POINTING	On-chip summing requested	N	N
[deg] Pointing RA	215.249552	215.3091757299593	Subarray requested	CUSTOM	1/8
[deg] Pointing Dec	-62.697646	-62.69689911442675	Subarray start row	449	449
[deg] Pointing Roll	330.587559	330.7970651272969	Subarray row count	128	128
[mm] SIM focus pos	-0.684267	-0.6828225247311905	Alternating exposures requested	N	N
[mm] SIM defocus	0	0.001444936568705701	[s] Primary exposure time	0.000000	0.4
[mm] SIM translation stage pos	-190.132523	-190.1425803651734			
[mm] SIM translation stage offset	0	0.01005778216563158			
[s] Observation start time (MET)	485423346.184000	485422777.81711			
Observation start date	2013-05-20T07:47:59	2013-05-20T07:39:37			
[s] Observation end time (MET)	485428346.184000	485429173.81745			
Observation end date	2013-05-20T09:11:19	2013-05-20T09:26:13			
Read mode	TIMED	TIMED			

2.3 Aspect



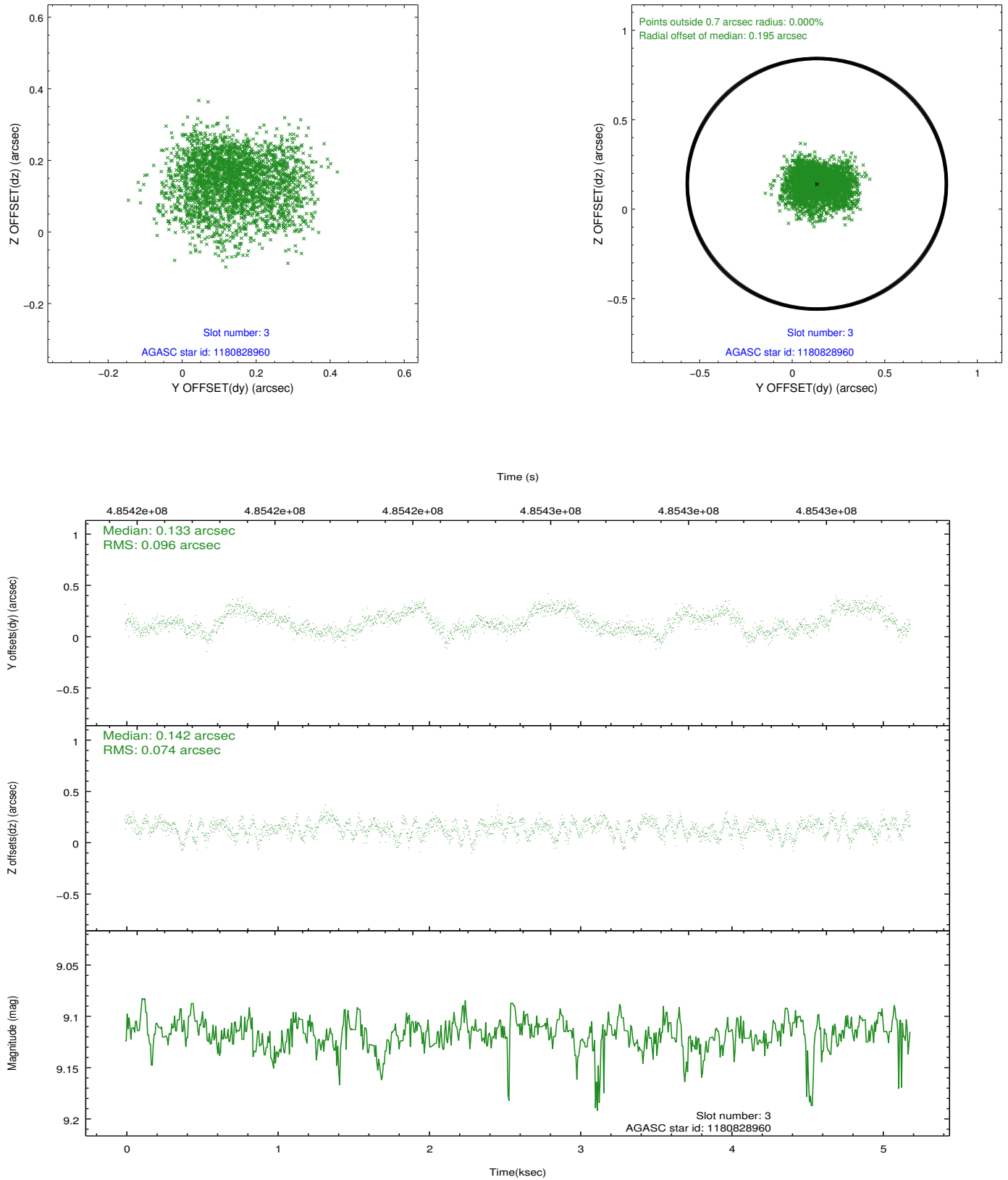


Slot Statistics

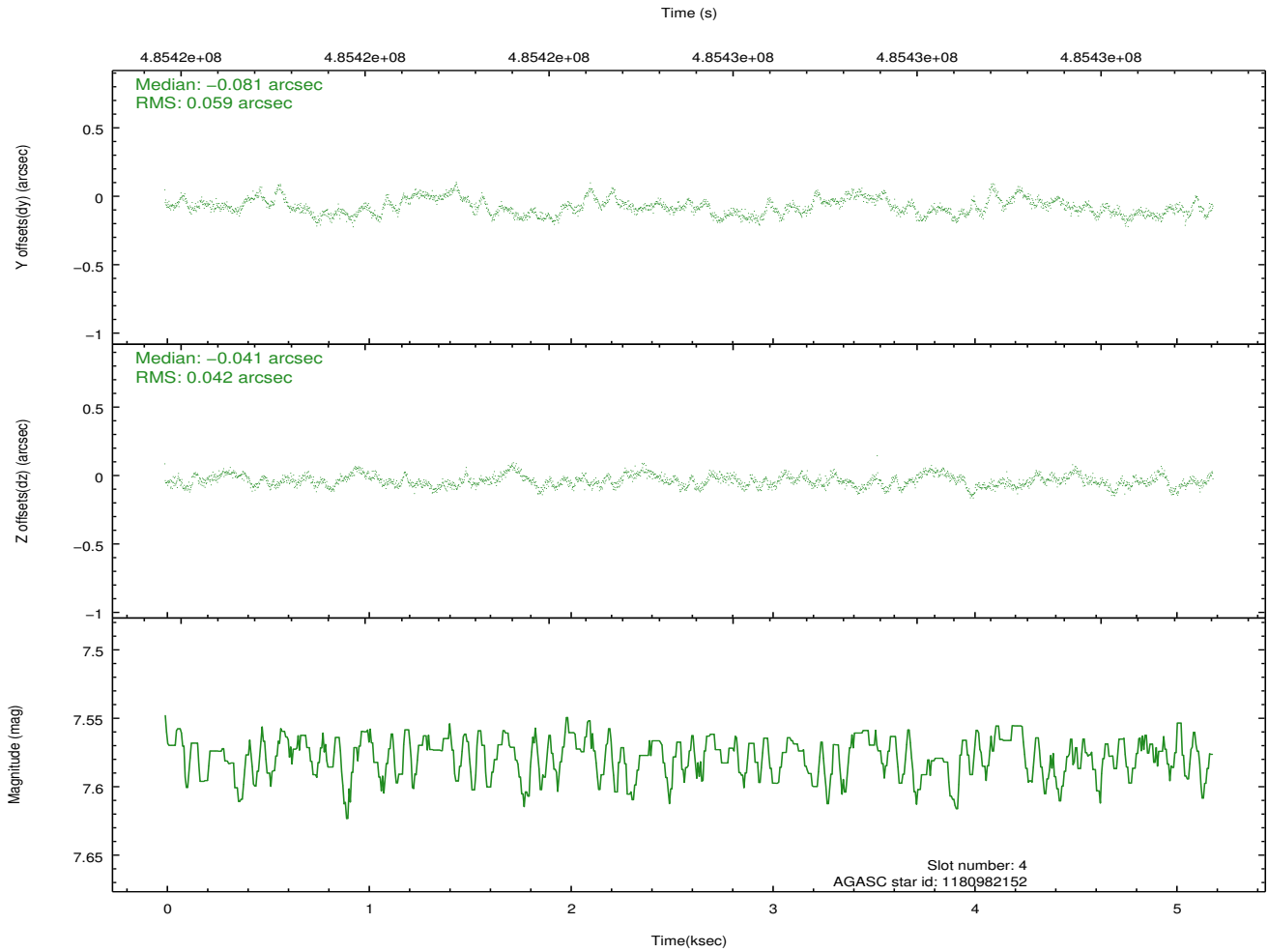
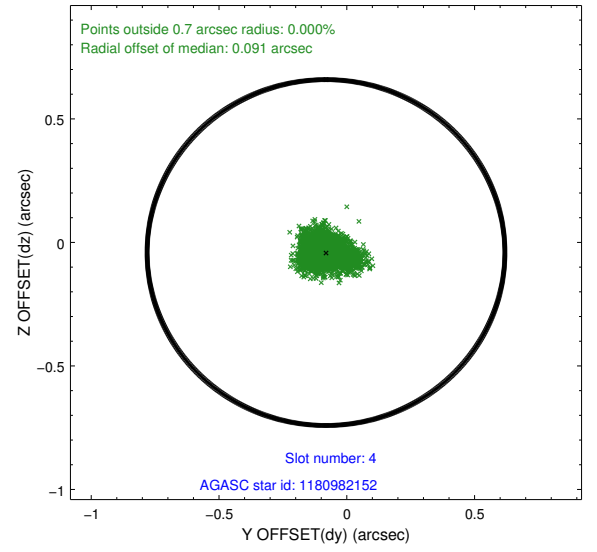
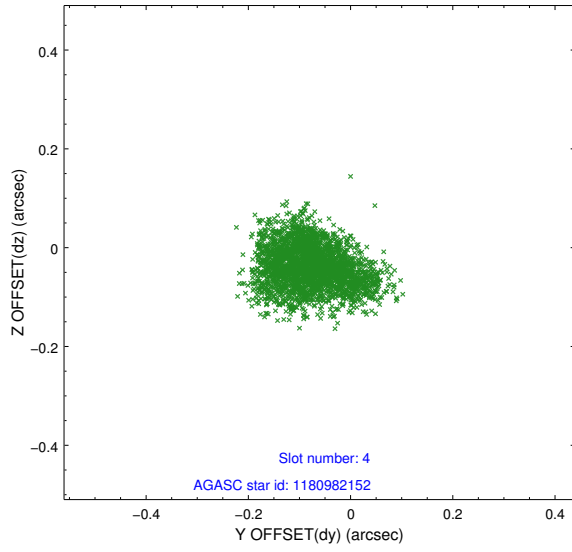
slot	status	used	id	mag	n_pts	med_dy	med_dz	dr1	dr2	ra	dec	mean_y	mean_z
0	FID		ACIS-S-2	6.97	1267	-0.108	-0.003	0.007	0.010	0.000000	0.000000	-771.70	-1737.76
1	FID		ACIS-S-4	7.04	1267	0.273	0.053	0.006	0.011	0.000000	0.000000	2141.41	169.57
2	FID		ACIS-S-5	7.07	1267	-0.195	-0.042	0.007	0.012	0.000000	0.000000	-1823.15	164.47
3	GUIDE	used	1180828960	9.12	2532	0.133	0.142	0.133	0.205	214.129373	-62.709043	-1581.92	-957.54
4	GUIDE	used	1180982152	7.58	2533	-0.081	-0.041	0.077	0.124	214.576177	-62.696852	-967.43	-548.88
5	GUIDE	used	1180986920	8.39	2533	-0.022	0.082	0.088	0.135	214.486539	-62.644346	-1190.04	-459.21
6	GUIDE	used	1180991312	8.35	2529	-0.016	-0.155	0.062	0.101	214.476823	-62.315993	-1797.01	555.13
7	GUIDE	used	1180996032	8.34	2532	-0.019	-0.028	0.073	0.119	215.344969	-63.459507	1480.57	-2313.48

2.4 Star Slots

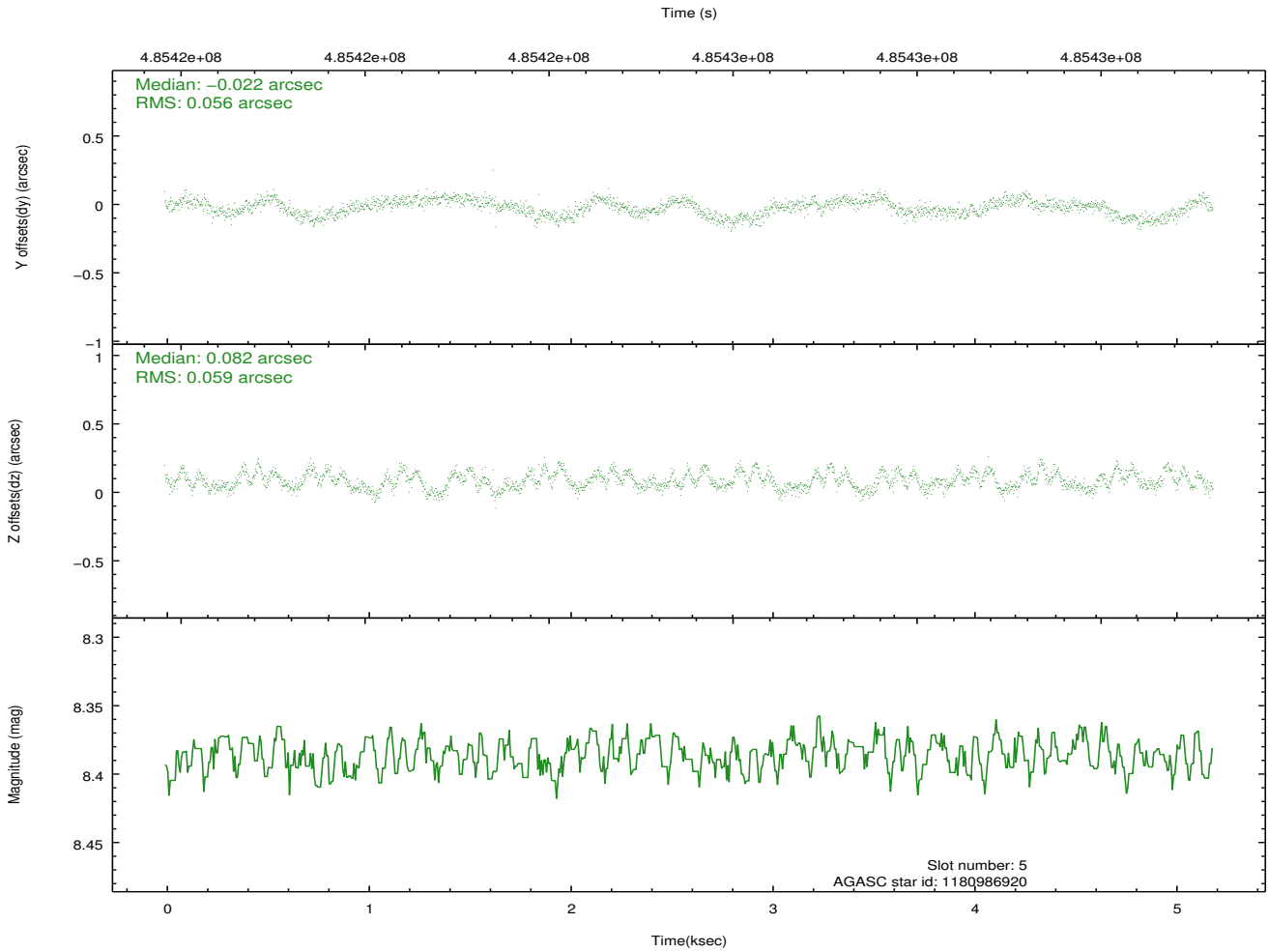
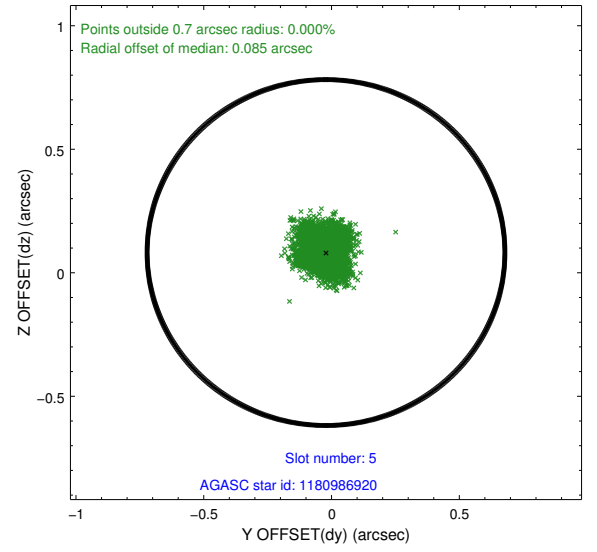
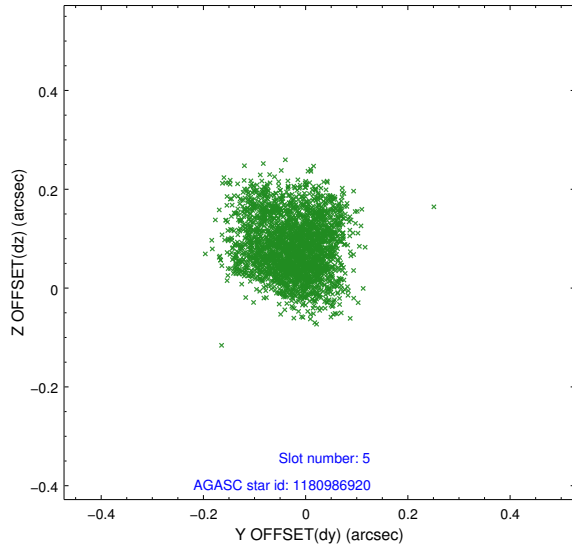
2.4.1 Slot 3



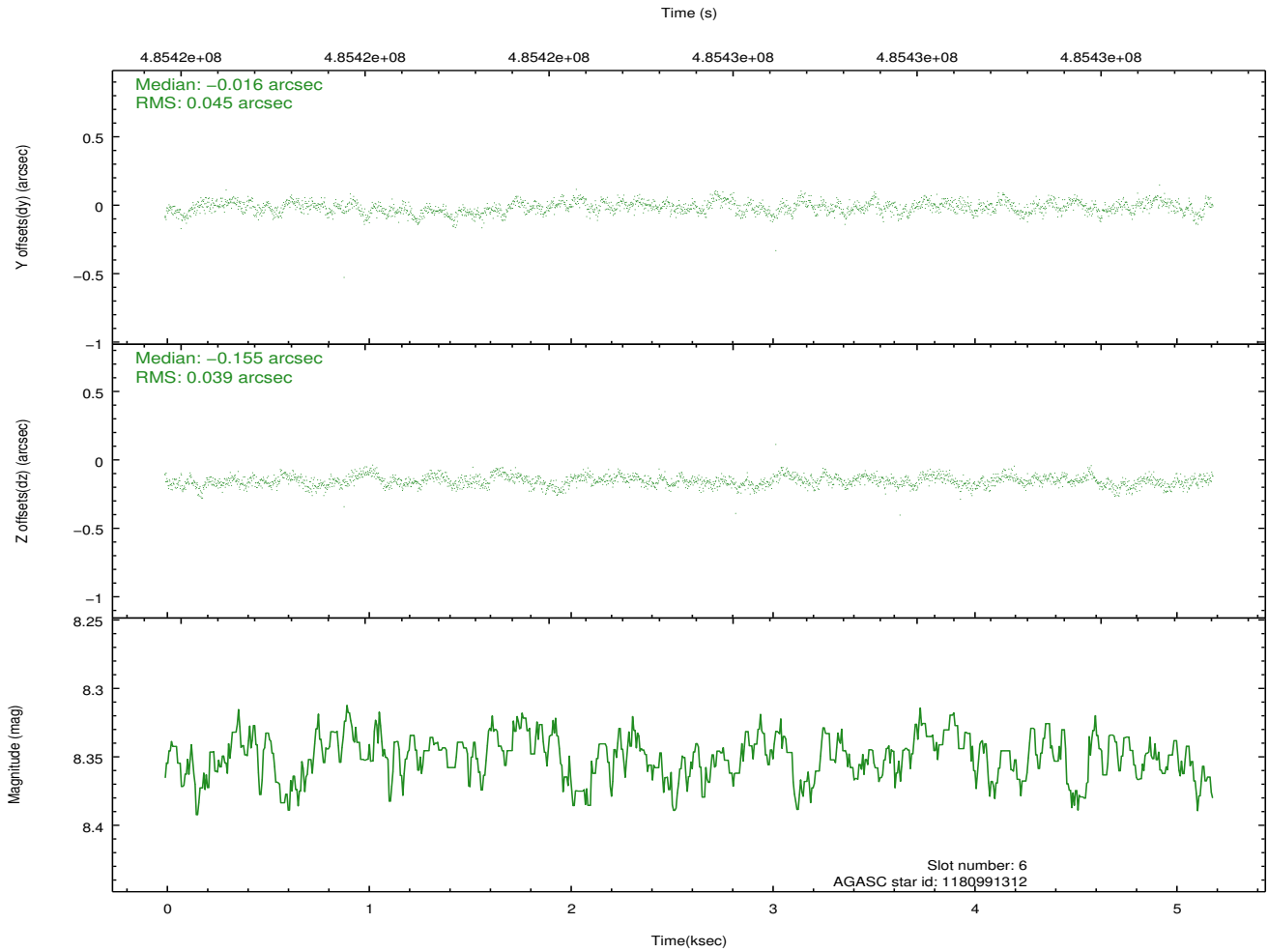
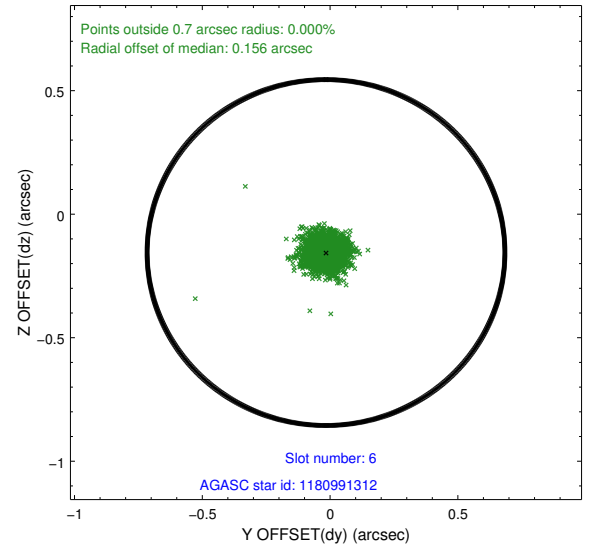
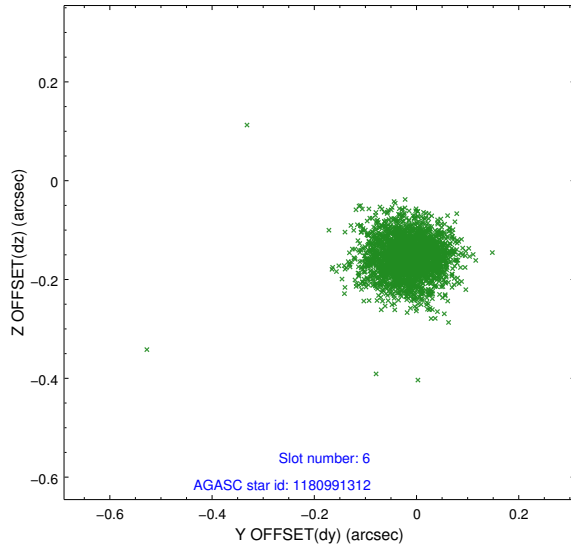
2.4.2 Slot 4



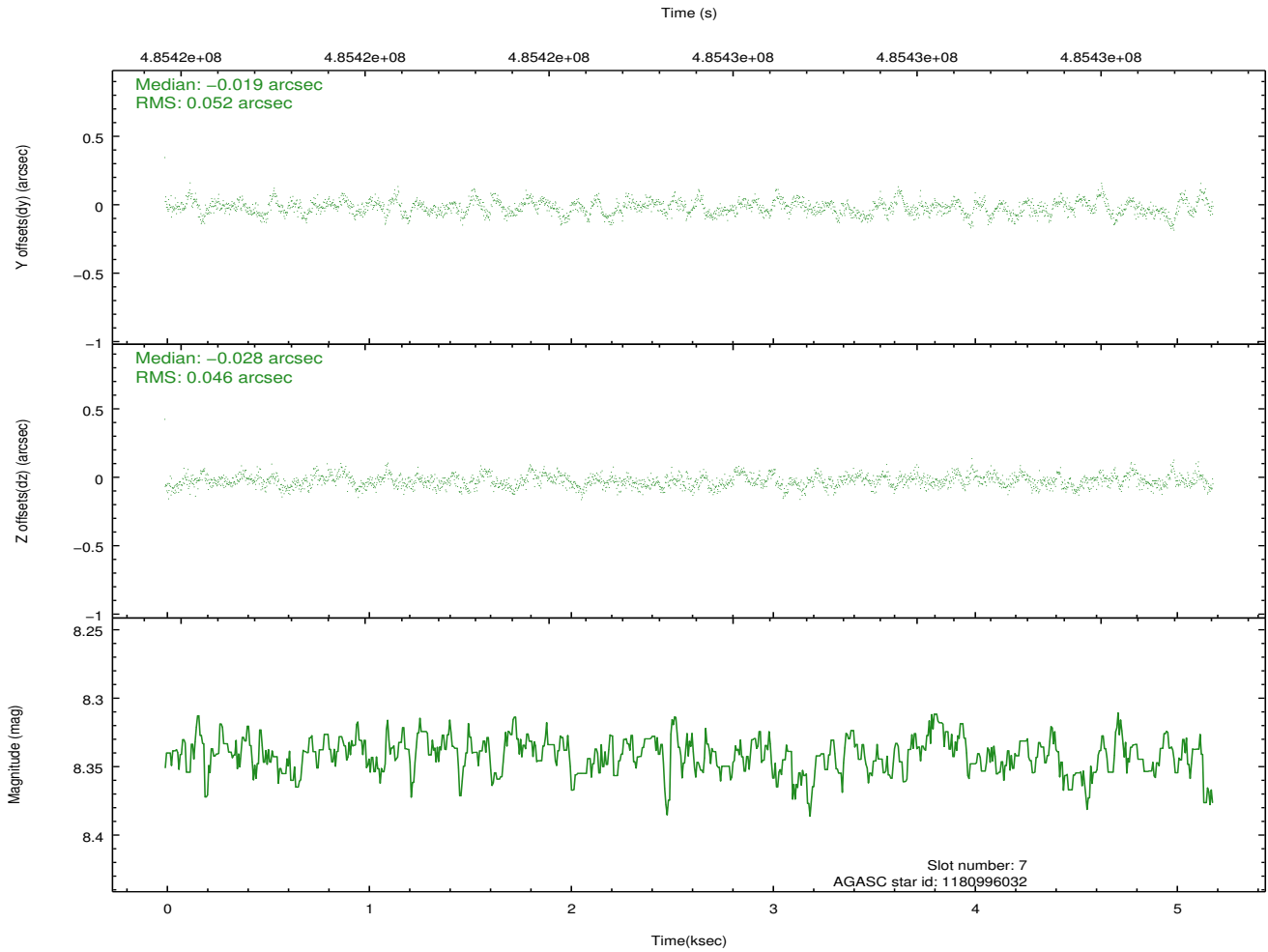
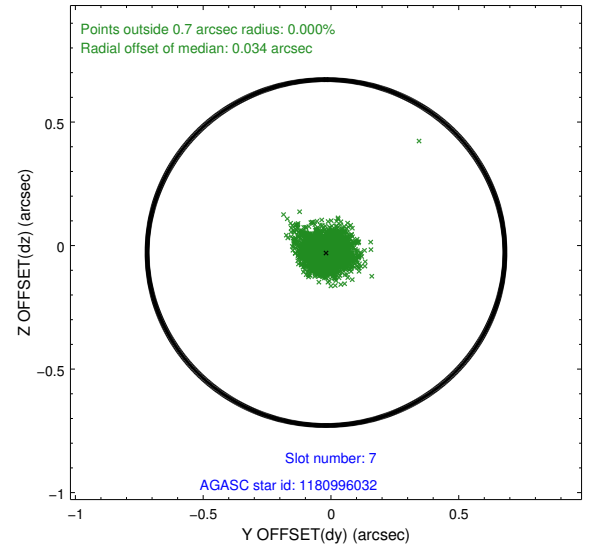
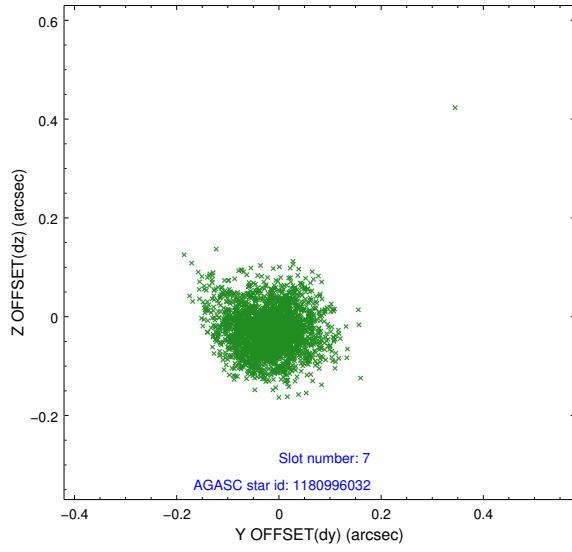
2.4.3 Slot 5



2.4.4 Slot 6

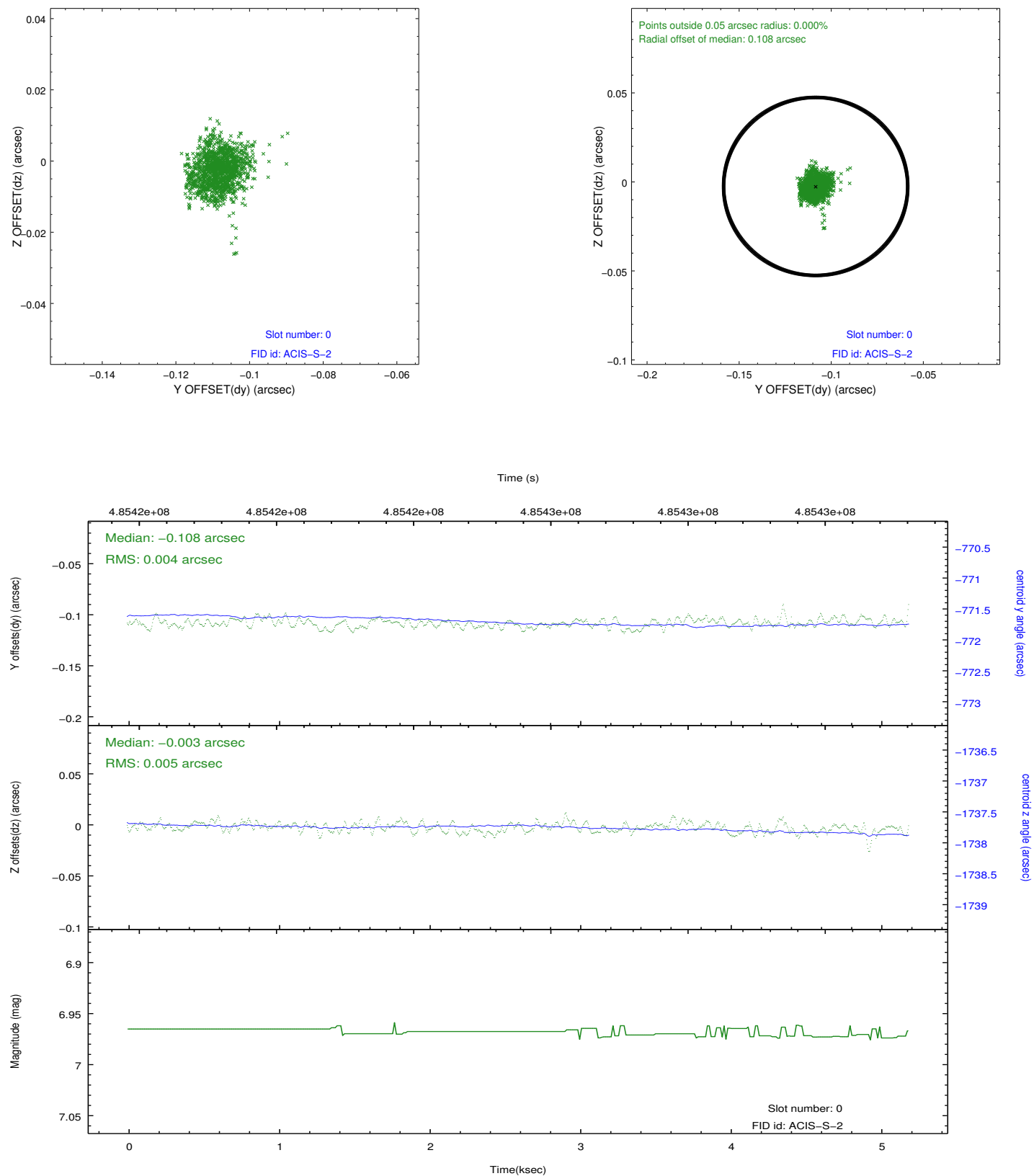


2.4.5 Slot 7

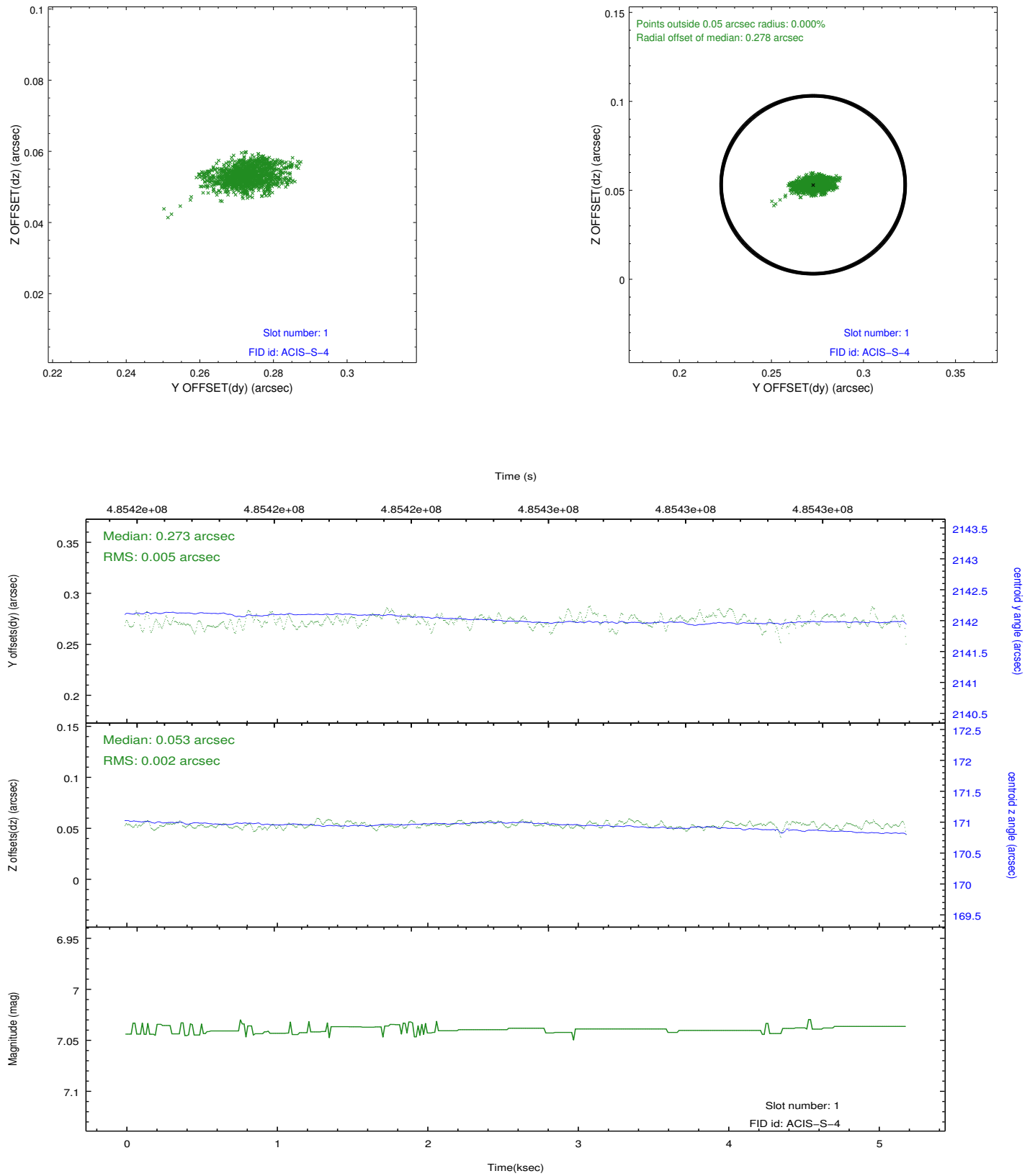


2.5 FID Slots

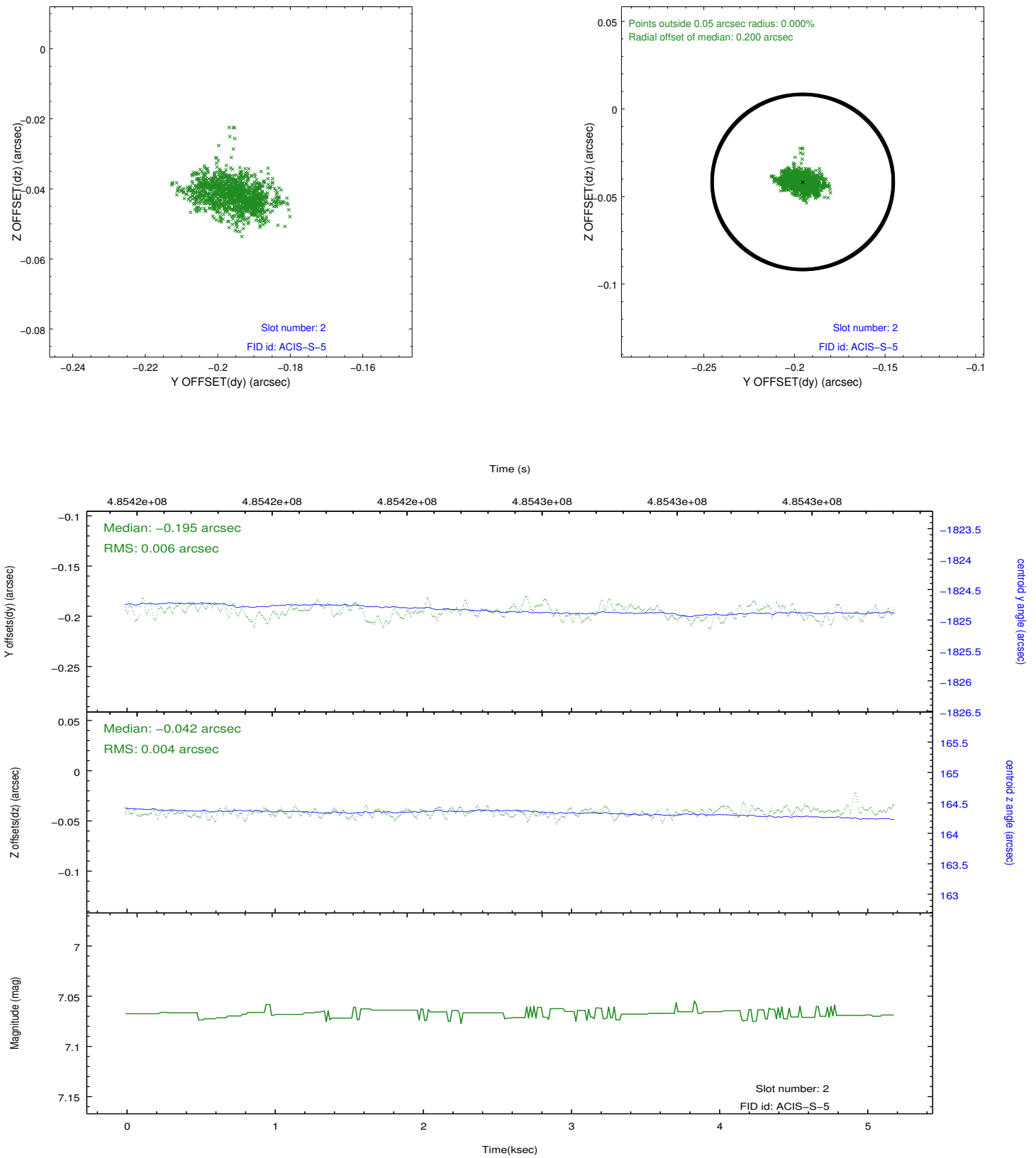
2.5.1 Slot 0



2.5.2 Slot 1



2.5.3 Slot 2



A Summary

A.1 Status

V&V Scientist	Beth Sundheim
V&V Date (YYYY-MM-DD)	2014.12.10
V&V Edition	1
V&V Disposition and Status	OK
V&V Charge Time	5.0699438935518

A.2 Comments

These data have been reprocessed with new aspect alignment calibration files that correct small mean offsets (up to 0.4 arcsecs) and improve overall astrometric accuracy. The new calibration was determined using data from the time period being reprocessed and was performed using cross-correlation of X-ray sources with radio and optical counterparts.