

V&V Reference Report

L2 ASCDS Version : 8.4.5

Observation 14001 - L2 Version 1
Chandra X-Ray Center

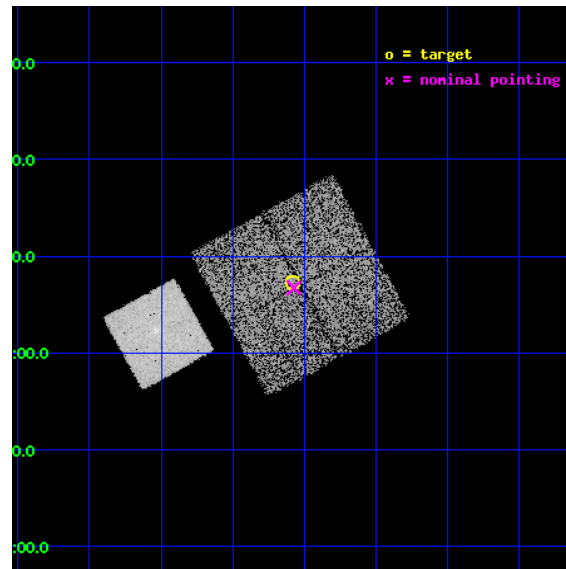
L2 Processing Date : Jun 22 2012

Contents

1	Front	2
2	OBI	3
2.1	OBI	3
2.1.1	Images	3
2.1.2	Bias	3
2.1.3	Parameters	4
2.1.4	Events	4
2.2	Compared Parameters	5
2.3	Aspect	6
2.4	Star Slots	9
2.4.1	Slot 3	9
2.4.2	Slot 4	10
2.4.3	Slot 5	11
2.4.4	Slot 6	12
2.4.5	Slot 7	13
2.5	FID Slots	14
2.5.1	Slot 0	14
2.5.2	Slot 1	15
2.5.3	Slot 2	16
A	Summary	17
A.1	Status	17
A.2	Comments	17

1 Front

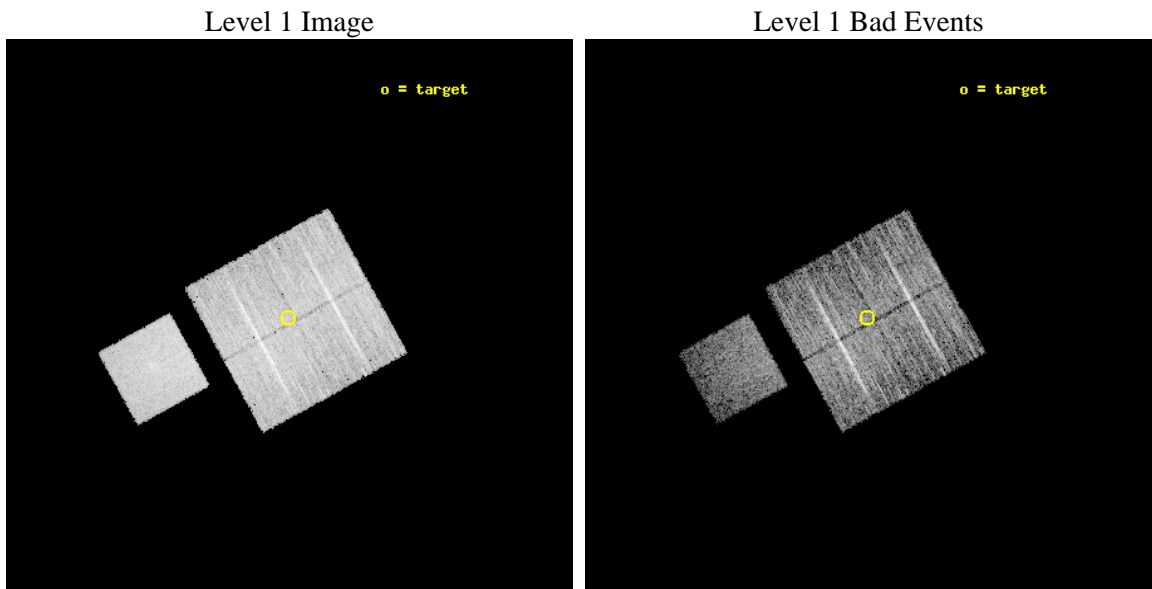
seq_num	801181	Sequence number
obs_id	14001	Observation id
title	GAMA groups and cosmic feedback	Proposal title
observer	Prof Trevor Ponman	Principal investigator
object	G09-72	Source name
dtcycle	0	
cycle	P	events from which exps? Prim/Second/Both
ra_targ	139.77	Observer's specified target RA [deg]
dec_targ	1.12	Observer's specified target Dec [deg]
ra_nom	139.76841269245	Nominal RA [deg]
dec_nom	1.1121034848651	Nominal Dec [deg]
roll_nom	241.21162820928	Nominal Roll [deg]
revision	1	Processing version of data
ontime	10065.700077415	Sum of GTIs [s]
livetime	9934.1842956425	Livetime [s]
ontime0	10065.700077415	Sum of GTIs [s]
ontime1	10065.700077415	Sum of GTIs [s]
ontime2	10059.418036699	Sum of GTIs [s]
ontime3	10065.700077415	Sum of GTIs [s]
ontime7	10065.700077415	Sum of GTIs [s]
l2events	48335	Number of level 2 events



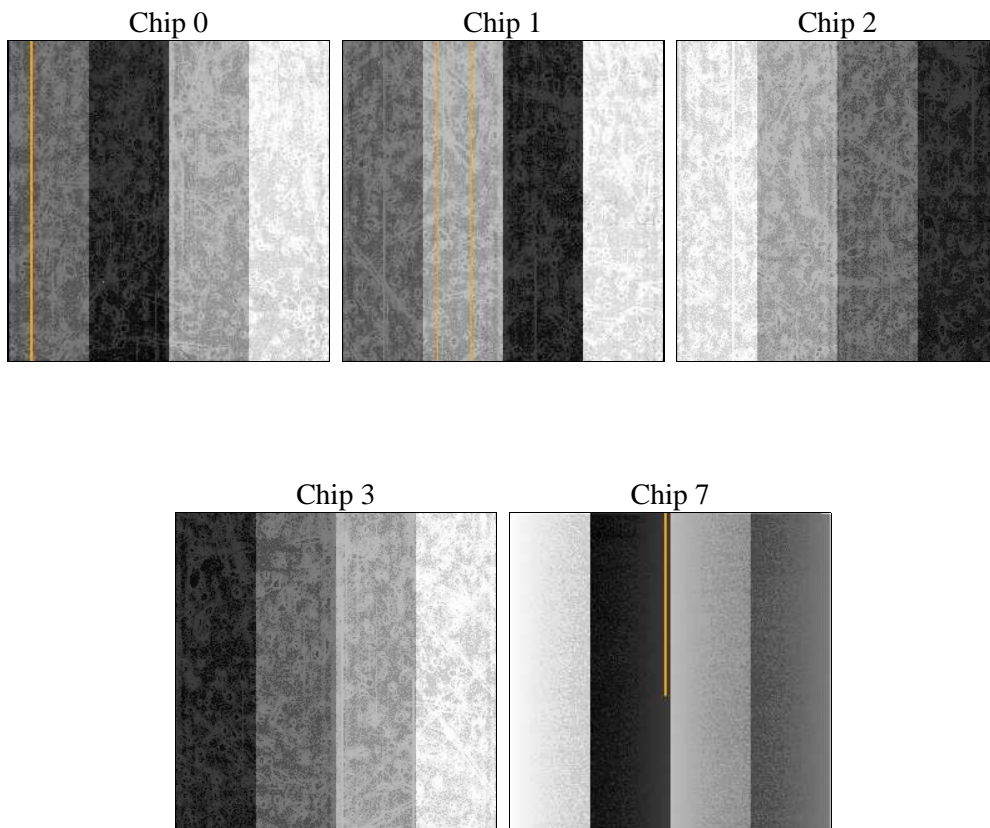
2 OBI

2.1 OBI

2.1.1 Images



2.1.2 Bias



2.1.3 Parameters

obi_num	0	Obi number	sched_exp_time	10000.000000	[s] Scheduled observation exposure time
ascdsver	8.4.5	Processing system revision	ontime	10065.700077415	Sum of GTIs [s]
caldsver	4.4.10	 	ontime0	10065.700077415	Sum of GTIs [s]
date	2012-06-22T03:26:38	Date and time of file creation	ontime1	10065.700077415	Sum of GTIs [s]
revision	1	Processing version of data	ontime2	10059.418036699	Sum of GTIs [s]
			ontime3	10065.700077415	Sum of GTIs [s]
			ontime7	10065.700077415	Sum of GTIs [s]
			l1events	264214	Number of level 1 events

2.1.4 Events

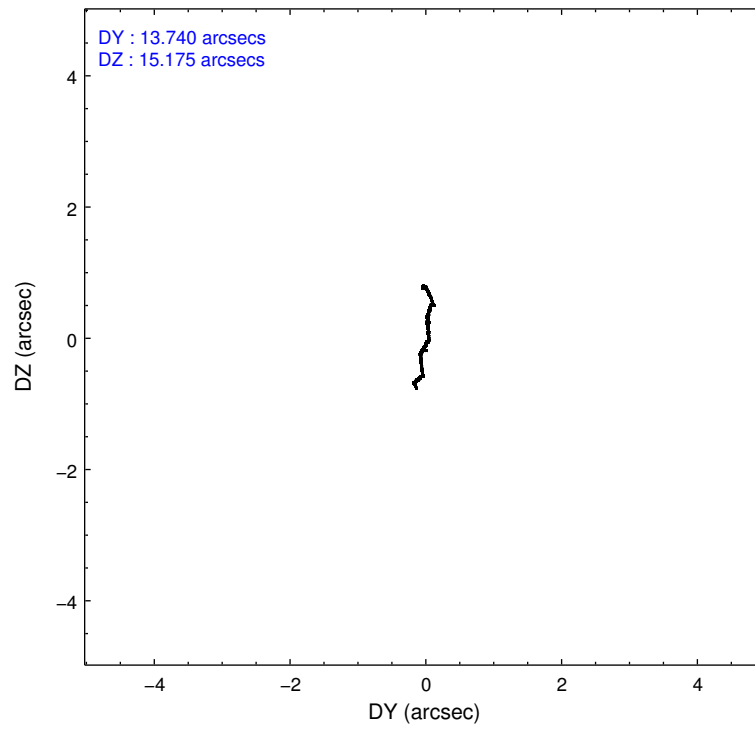
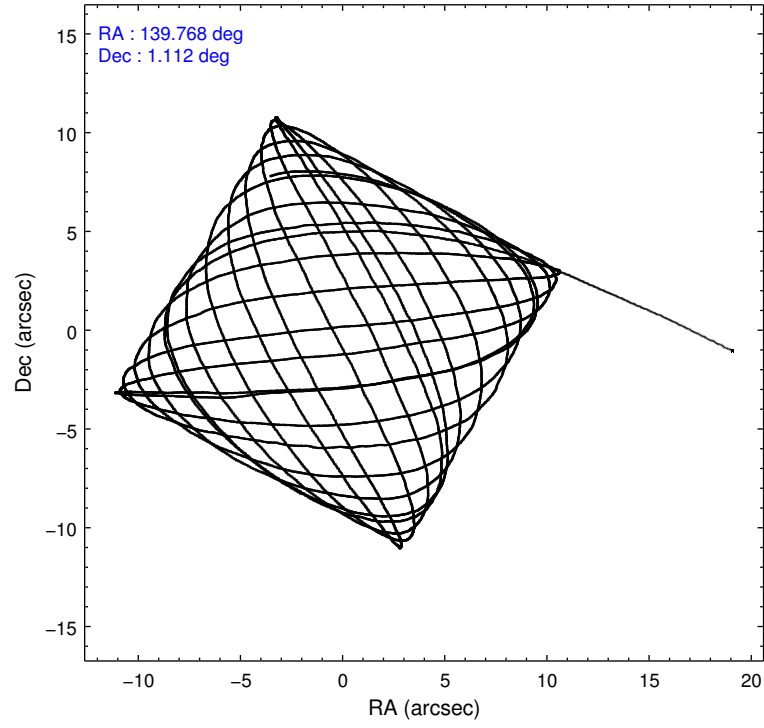
	ccd 0	ccd 1	ccd 2	ccd 3	ccd 7
level 1 events	49078	50429	54319	49459	60929
rejected events	43101	44064	48467	43702	31599
rejected %	87%	87%	89%	88%	51%

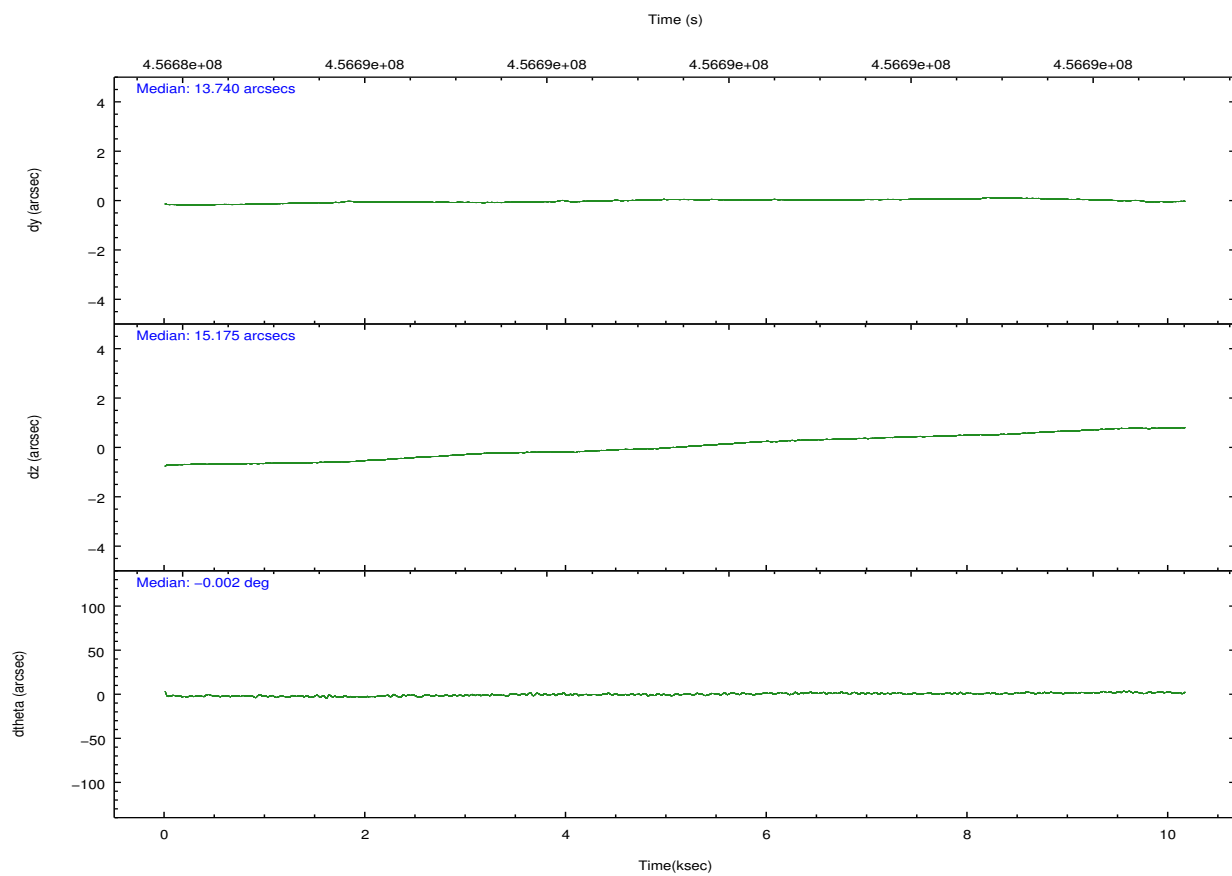
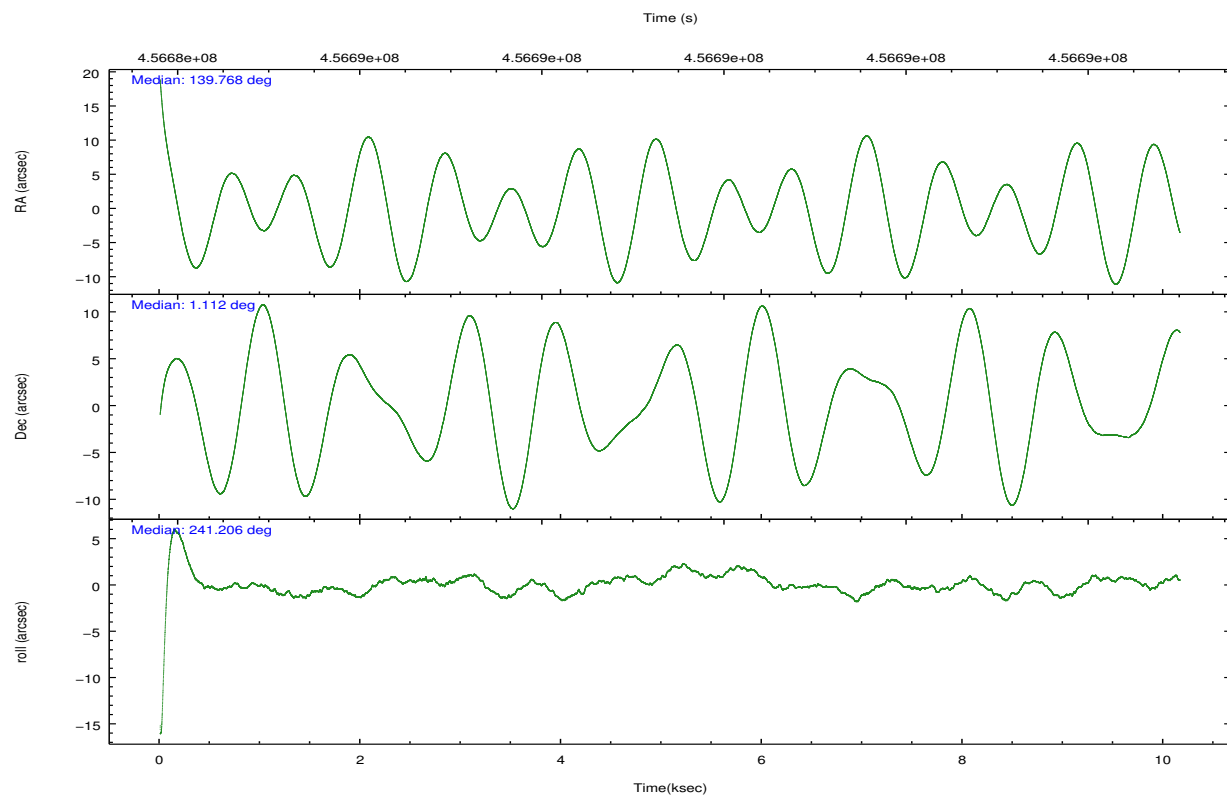
	ccd 0	ccd 1	ccd 2	ccd 3	ccd 7
grade 0 events	2152	2176	2178	2082	3181
	4%	4%	4%	4%	5%
grade 1 events	32	24	31	33	90
	0%	0%	0%	0%	0%
grade 2 events	1569	1452	1442	1320	6323
	3%	2%	2%	2%	10%
grade 3 events	586	648	589	611	2628
	1%	1%	1%	1%	4%
grade 4 events	571	695	615	600	2507
	1%	1%	1%	1%	4%
grade 5 events	2087	2170	1933	2322	6284
	4%	4%	3%	4%	10%
grade 6 events	1102	1400	1032	1148	14703
	2%	2%	1%	2%	24%
grade 7 events	40979	41864	46499	41343	25213
	83%	83%	85%	83%	41%

2.2 Compared Parameters

Parameter	Planned	Actual	Parameter	Planned	Actual
Instrument	ACIS	ACIS	Obspar format version number	7	7
Detector	ACIS-01237	ACIS-01237	Obspar file type	PREDICTED	ACTUAL
Grating	NONE	NONE	Obspar update status	NONE	UPDATED
Data mode	VFAINT	VFAINT	CCD I0 on	Y	Y
Observation mode	POINTING	POINTING	CCD I1 on	Y	Y
[deg] Pointing RA	139.767699	139.7684126924472	CCD I2 on	Y	Y
[deg] Pointing Dec	1.139564	1.112103484865112	CCD I3 on	Y	Y
[deg] Pointing Roll	241.002990	241.2116282092799	CCD S0 on	N	N
[mm] SIM focus pos	-0.782348	-0.7809083437167272	CCD S1 on	N	N
[mm] SIM defocus	0	0.001439871863259334	CCD S2 on	N	N
[mm] SIM translation stage pos	-233.592463	-233.5874344608287	CCD S3 on	O1	Y
[mm] SIM translation stage offset	0	-0.005018542100998502	CCD S4 on	N	N
[s] Observation start time (MET)	456684493.184000	456683332.73339	CCD S5 on	N	N
Observation start date	2012-06-21T16:47:07	2012-06-21T16:28:52	Number of optional ACIS chips dropped	0	0
[s] Observation end time (MET)	456694493.184000	456696032.48407	On-chip summing requested	N	N
Observation end date	2012-06-21T19:33:47	2012-06-21T20:00:32	Subarray requested	NONE	NONE
Read mode	TIMED	TIMED	Alternating exposures requested	N	N
			[s] Primary exposure time	0.000000	3.1

2.3 Aspect



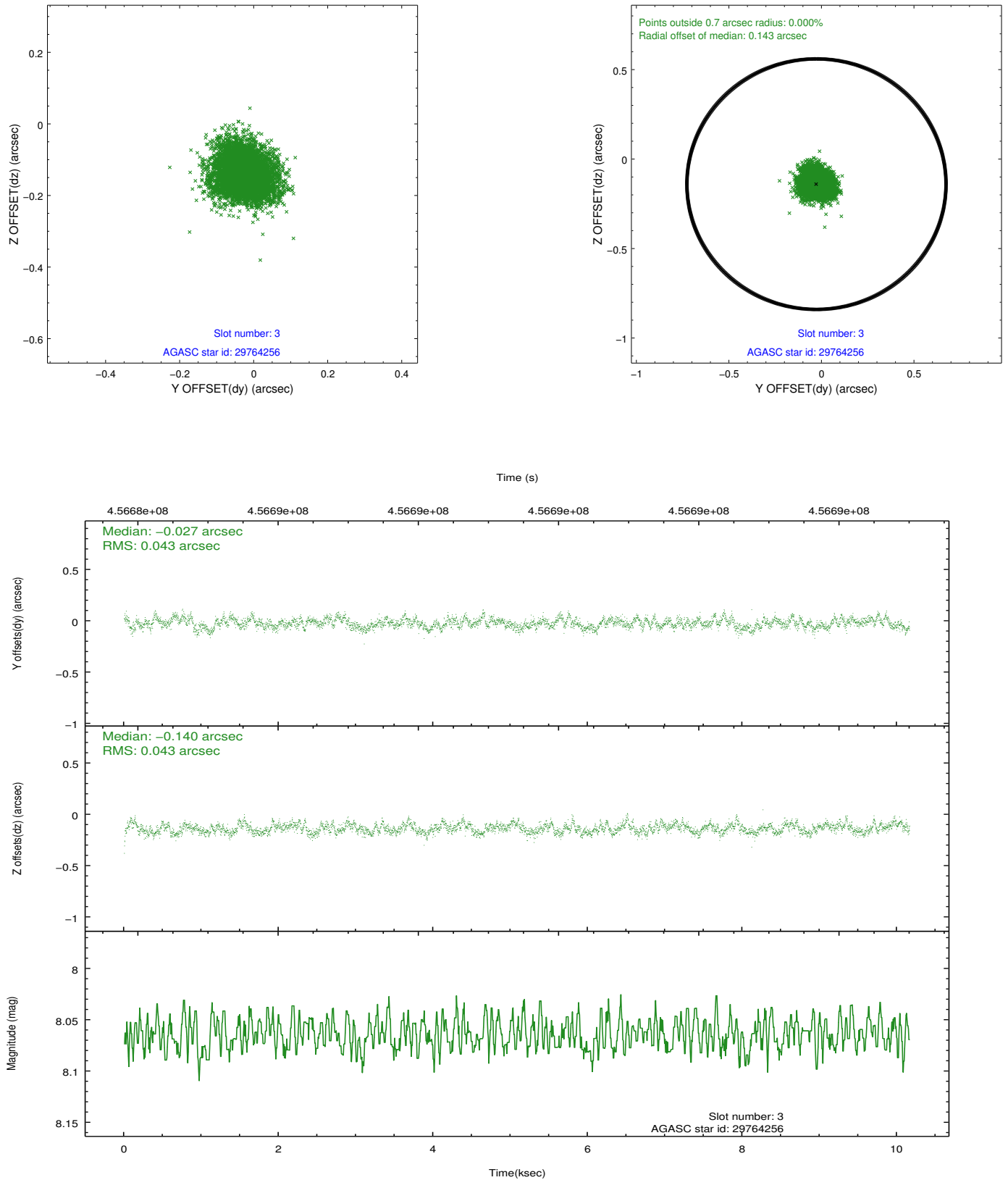


Slot Statistics

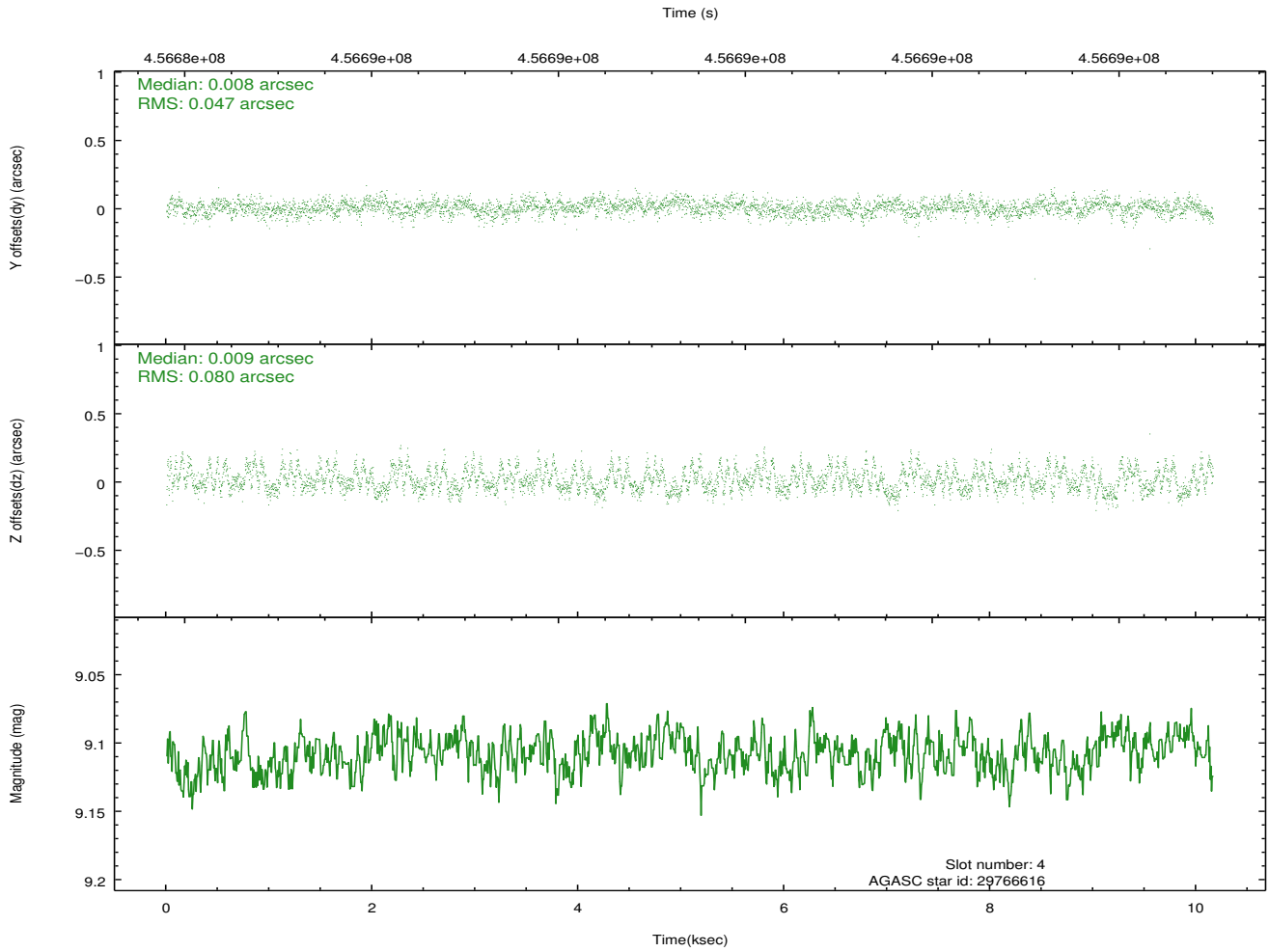
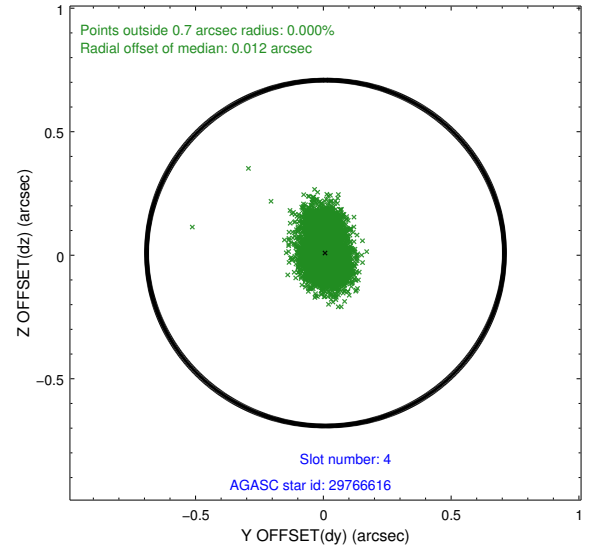
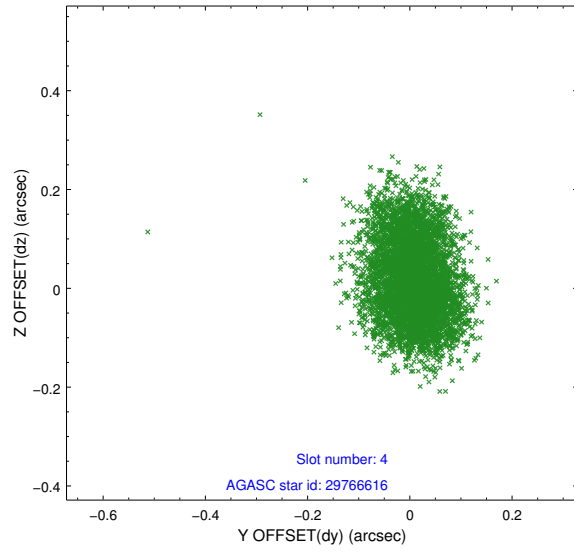
slot	status	id	mag	n_pts	med_dy	med_dz	dr1	dr2	ra	dec	mean_y	mean_z
0	FID	ACIS-I-1	7.13	2479	0.039	0.045	0.029	0.042	0.000000	0.000000	925.81	-838.76
1	FID	ACIS-I-2	7.04	2479	-0.147	-0.071	0.017	0.028	0.000000	0.000000	-768.18	-845.57
2	FID	ACIS-I-6	7.13	2479	0.016	0.093	0.020	0.029	0.000000	0.000000	391.20	1702.84
3	GUIDE	29764256	8.06	4957	-0.027	-0.140	0.065	0.104	139.867975	0.897058	591.14	738.30
4	GUIDE	29766616	9.11	4954	0.008	0.009	0.099	0.160	139.413846	1.615875	-881.55	-1944.87
5	GUIDE	29890456	9.06	4954	-0.040	0.186	0.082	0.132	140.211930	1.434440	-1703.50	883.51
6	GUIDE	29893632	9.16	4951	-0.139	-0.022	0.115	0.183	140.079929	0.722808	767.01	1710.55
7	GUIDE	29773712	6.98	4957	0.186	-0.041	0.085	0.131	139.166578	0.729037	2343.09	-1176.49

2.4 Star Slots

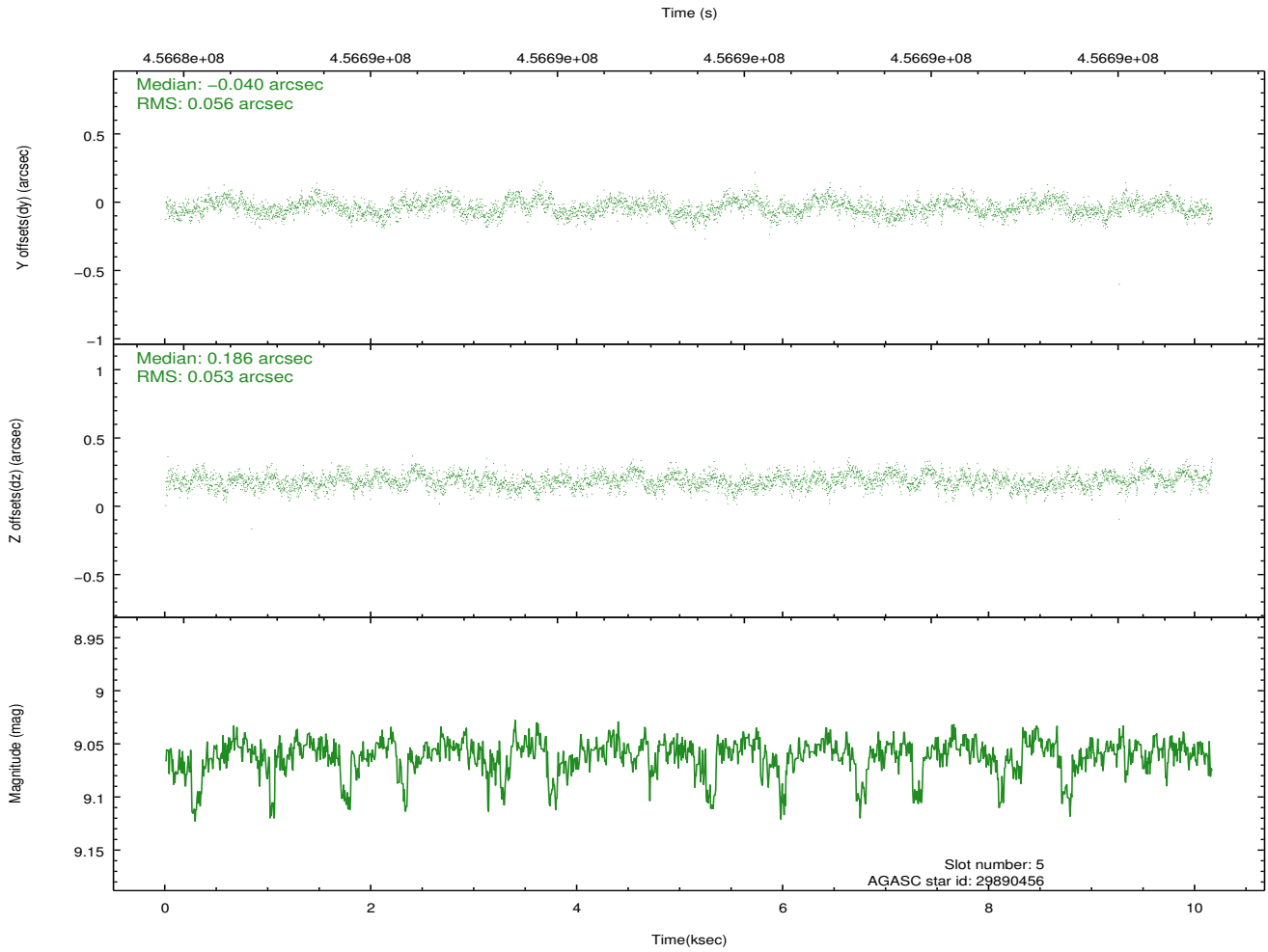
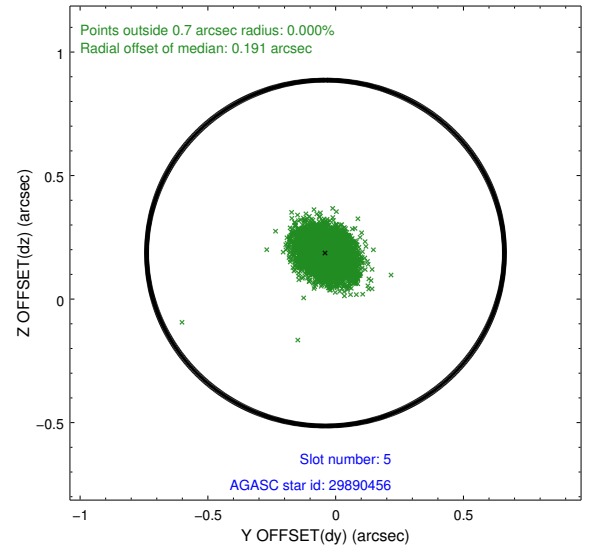
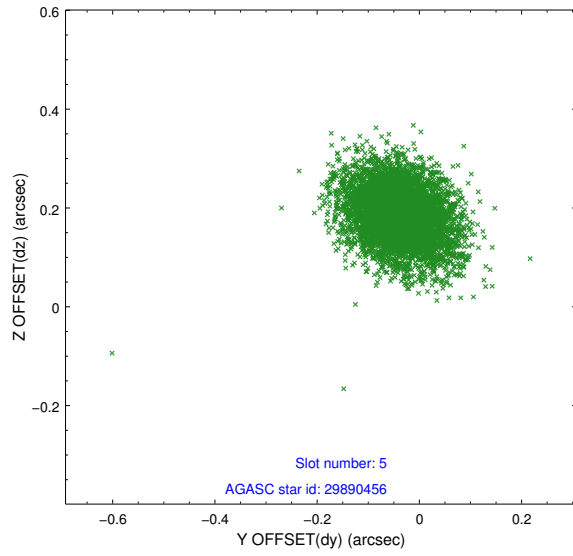
2.4.1 Slot 3



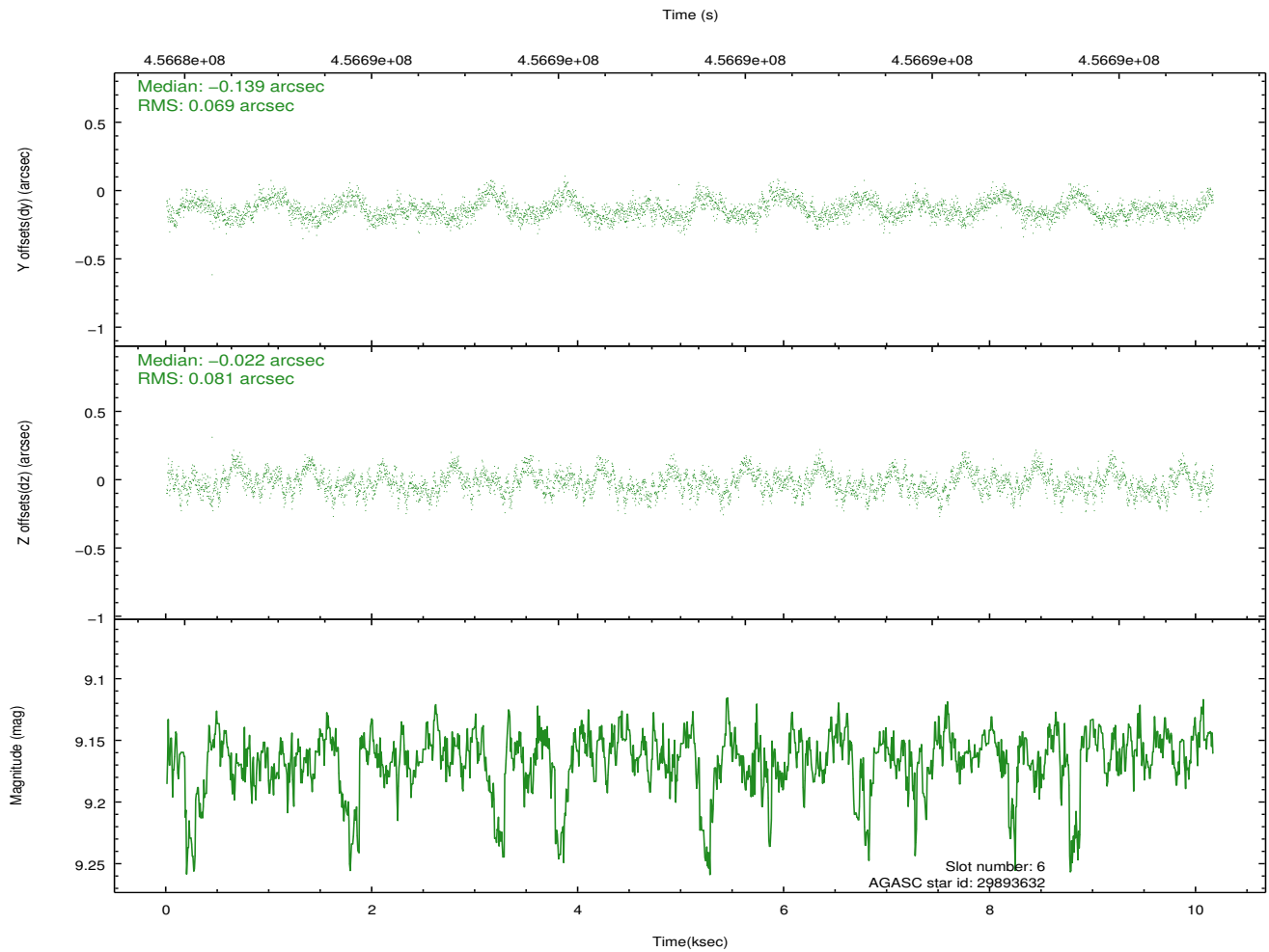
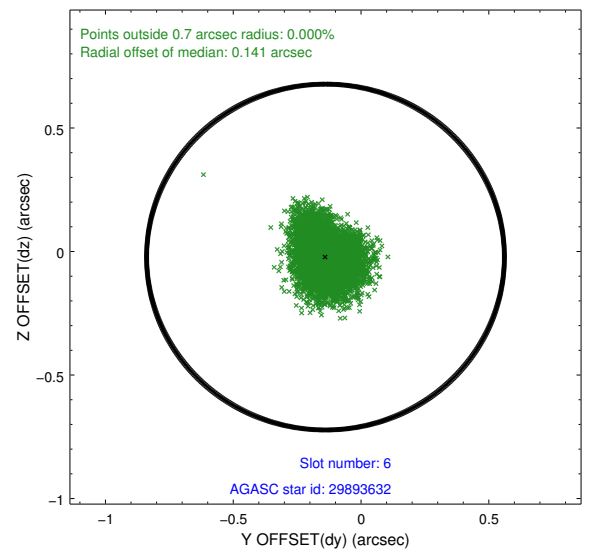
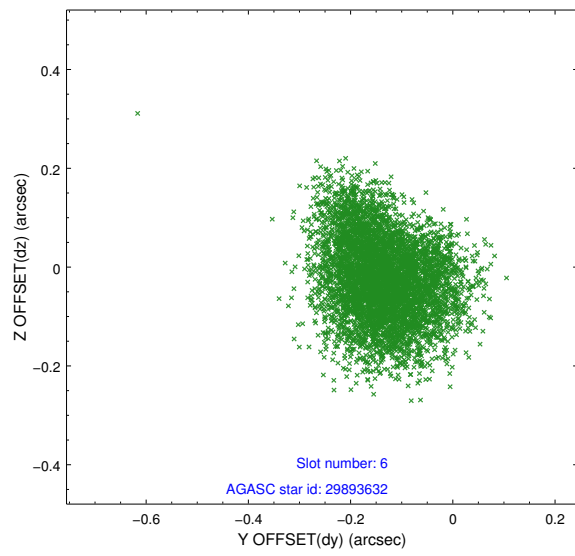
2.4.2 Slot 4



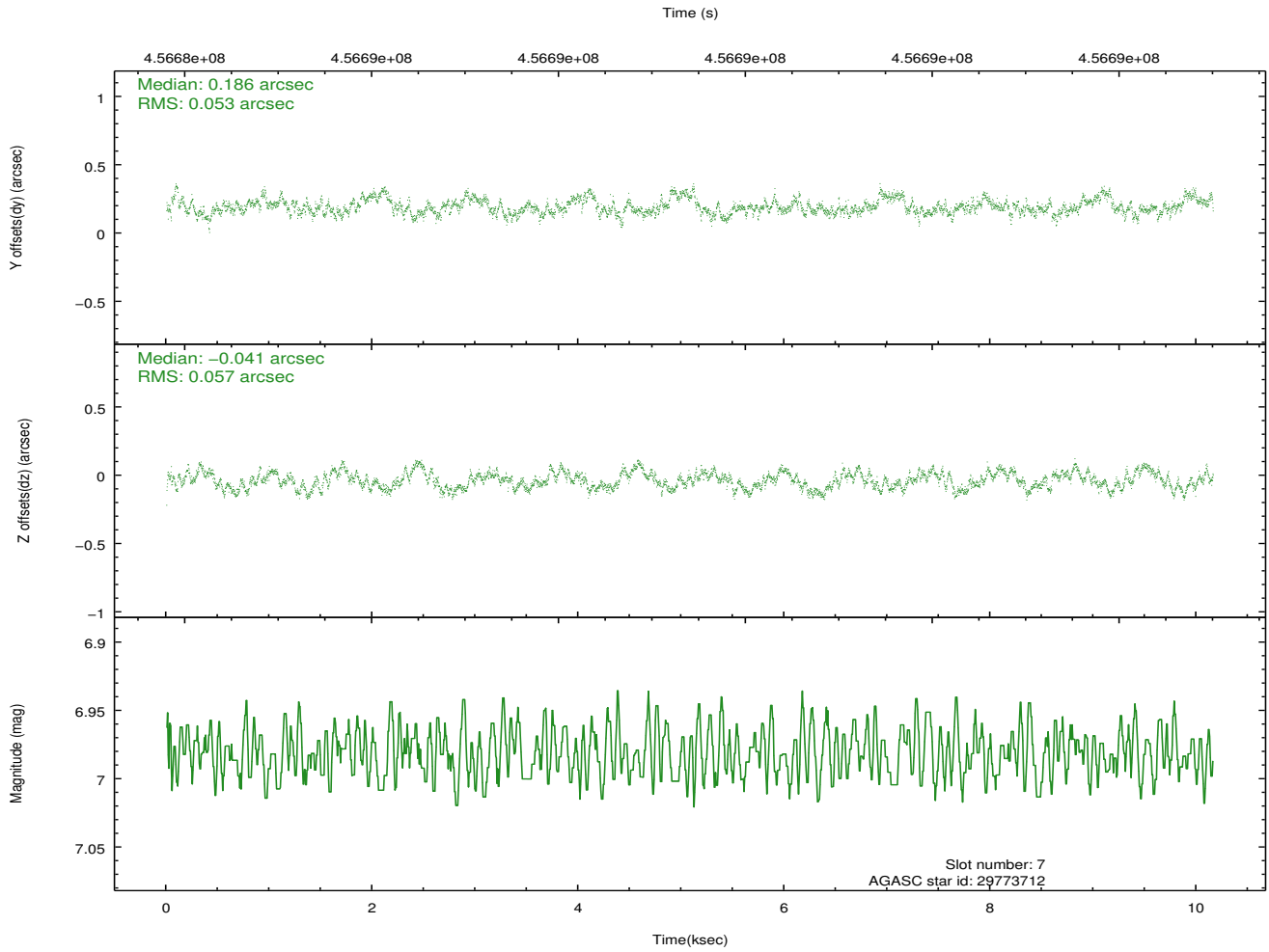
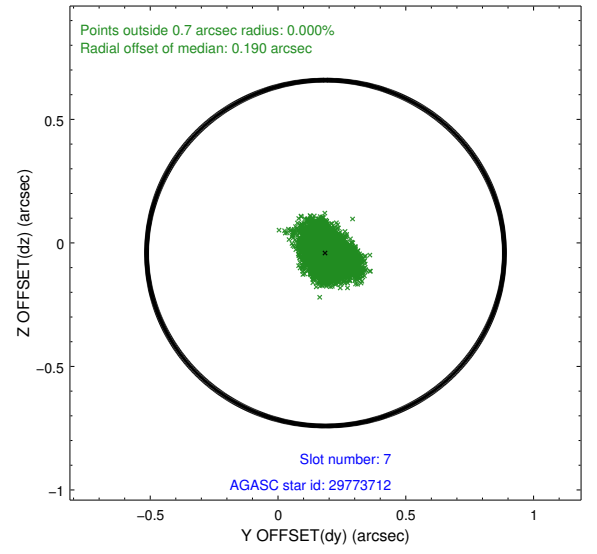
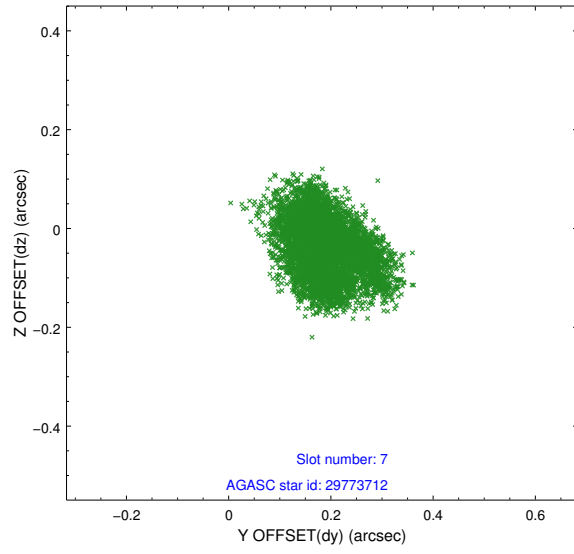
2.4.3 Slot 5



2.4.4 Slot 6

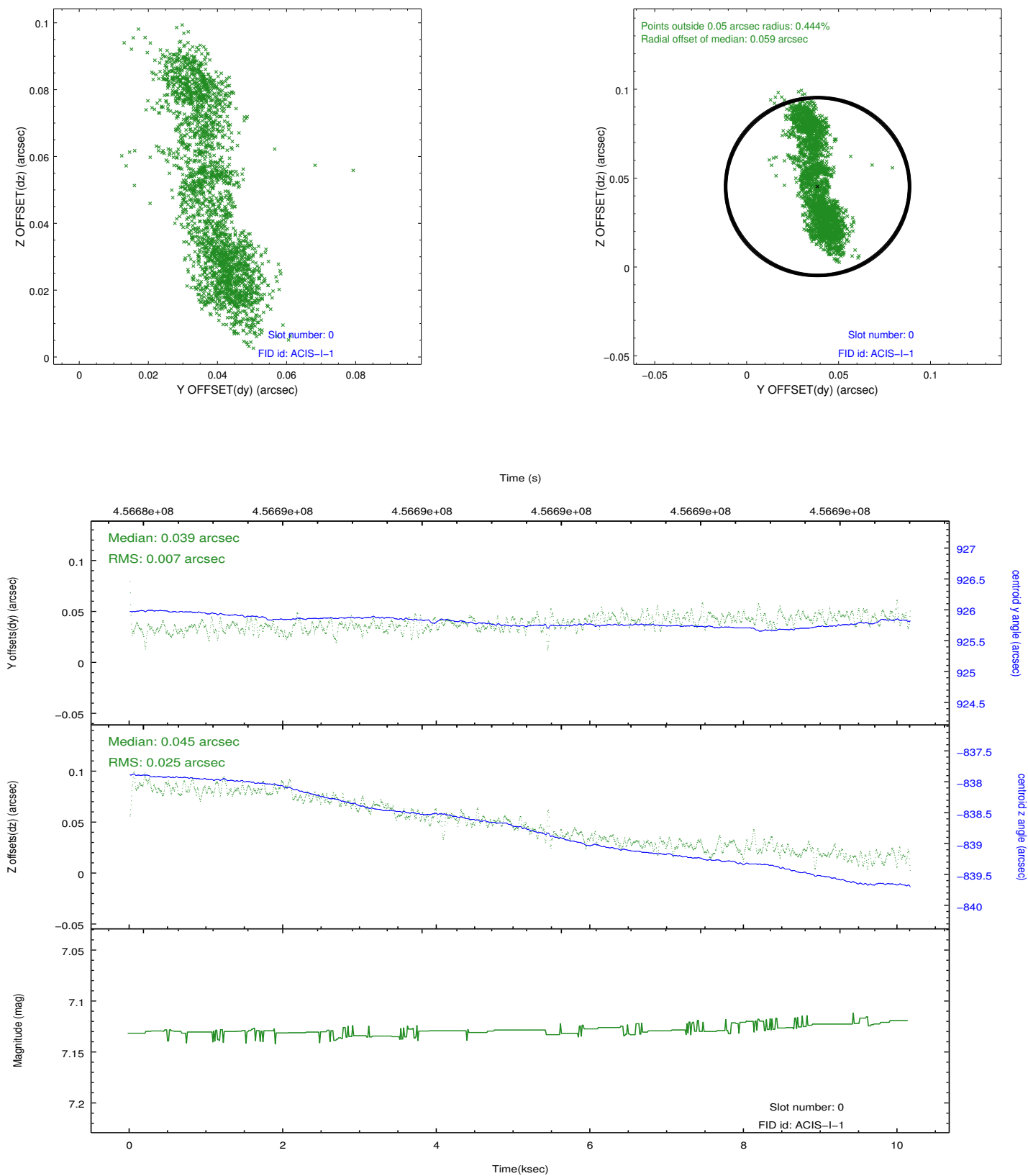


2.4.5 Slot 7

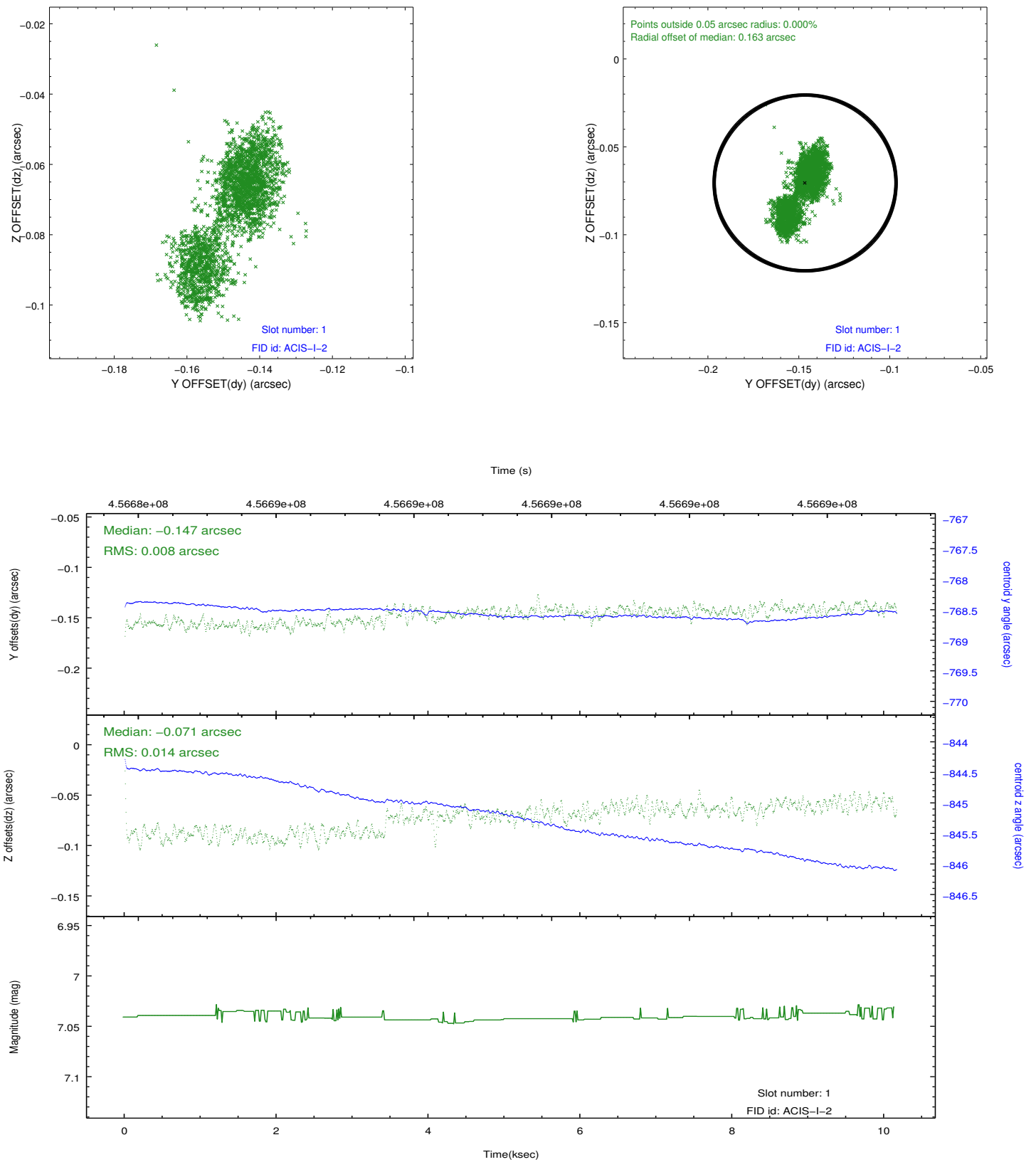


2.5 FID Slots

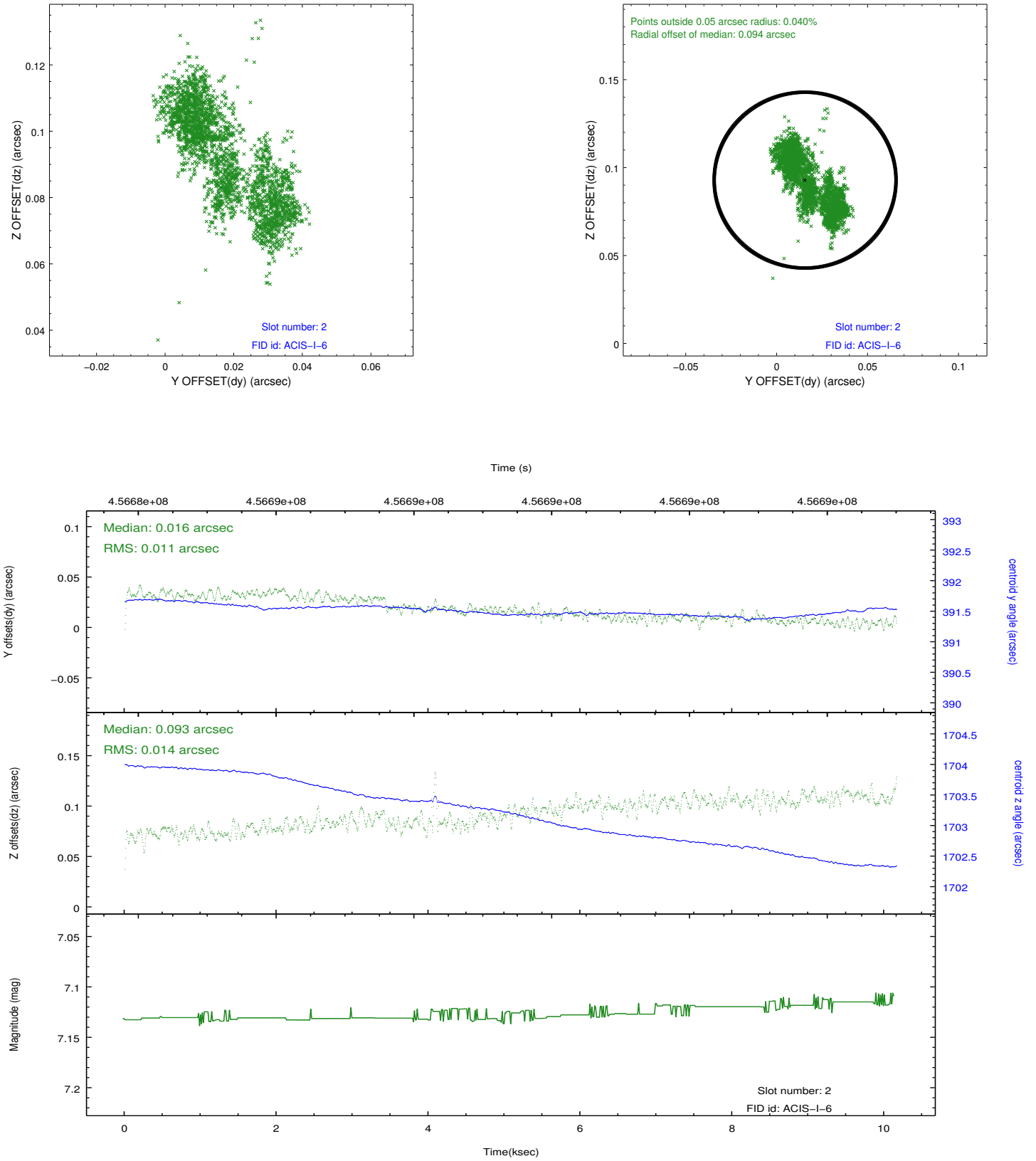
2.5.1 Slot 0



2.5.2 Slot 1



2.5.3 Slot 2



A Summary

A.1 Status

V&V Scientist	Joy Nichols
V&V Date (YYYY-MM-DD)	2012.06.22
V&V Edition	1
V&V Disposition and Status	OK
V&V Charge Time	10.065700077415

A.2 Comments