

V&V Reference Report

L2 ASCDS Version : 8.4.3

Observation 13998 - L2 Version 2
Chandra X-Ray Center

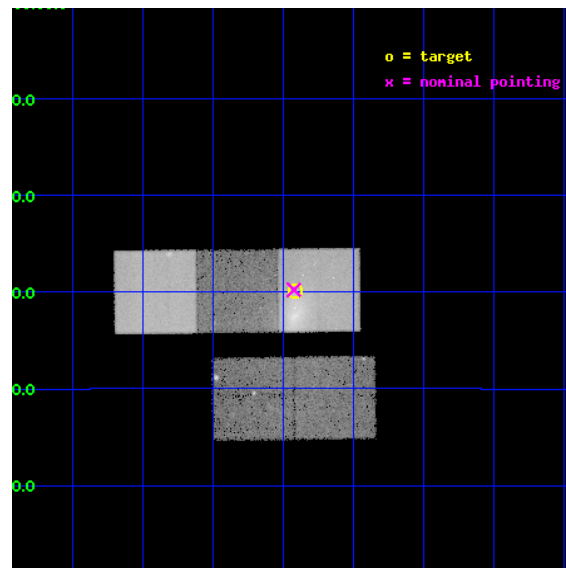
L2 Processing Date : Feb 28 2012

Contents

1	Front	2
2	OBI	3
2.1	OBI	3
2.1.1	Images	3
2.1.2	Bias	3
2.1.3	Parameters	4
2.1.4	Events	4
2.2	Compared Parameters	5
2.3	Aspect	6
2.4	Star Slots	9
2.4.1	Slot 3	9
2.4.2	Slot 4	10
2.4.3	Slot 5	11
2.4.4	Slot 6	12
2.4.5	Slot 7	13
2.5	FID Slots	14
2.5.1	Slot 0	14
2.5.2	Slot 1	15
2.5.3	Slot 2	16
A	Summary	17
A.1	Status	17
A.2	Comments	17

1 Front

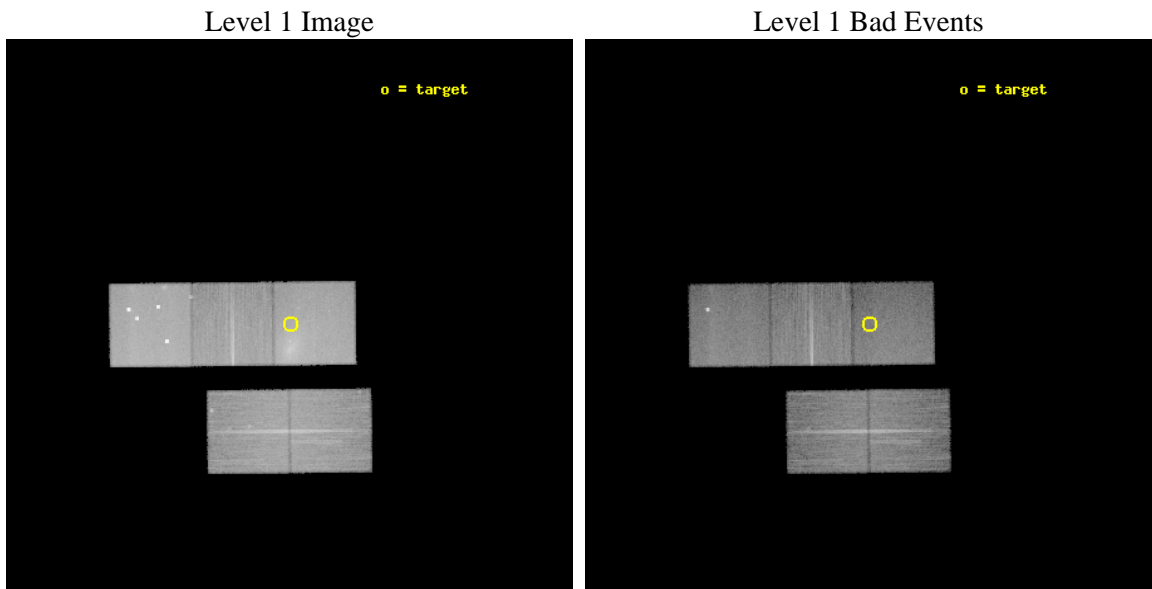
seq_num	801178	Sequence number
obs_id	13998	Observation id
title	Abell 545 an uncommon merging cluster with radio halo and candidate shock	Proposal title
observer	Dr. Sabrina De Grandi	Principal investigator
object	ABELL 545	Source name
dtcycle	0	
cycle	P	events from which exps? Prim/Second/Both
ra_targ	83.104167	Observer's specified target RA [deg]
dec_targ	-11.498889	Observer's specified target Dec [deg]
ra_nom	83.10584494654	Nominal RA [deg]
dec_nom	-11.496365673518	Nominal Dec [deg]
roll_nom	359.33264672271	Nominal Roll [deg]
revision	2	Processing version of data
ontime	30038.459801078	Sum of GTIs [s]
livetime	29645.985209784	Livetime [s]
ontime2	30038.295641065	Sum of GTIs [s]
ontime3	30038.336681068	Sum of GTIs [s]
ontime5	30038.418761075	Sum of GTIs [s]
ontime6	30038.377721071	Sum of GTIs [s]
ontime7	30038.459801078	Sum of GTIs [s]
l2events	349967	Number of level 2 events



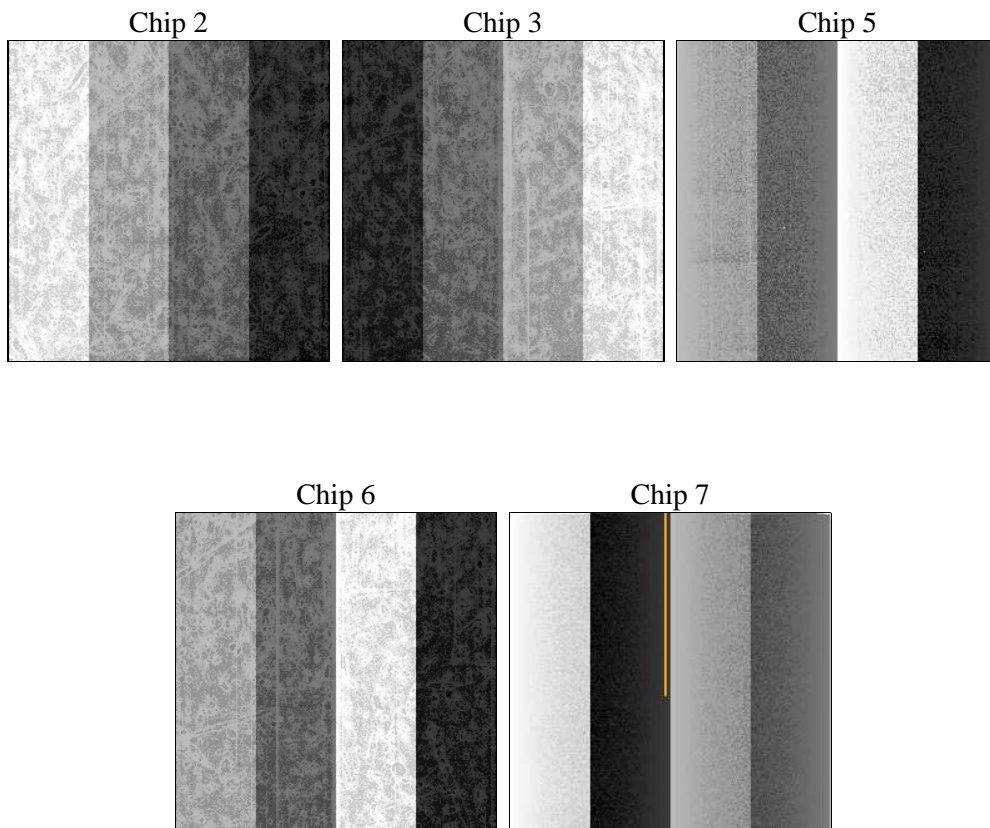
2 OBI

2.1 OBI

2.1.1 Images



2.1.2 Bias



2.1.3 Parameters

obi_num	0	Obi number	sched_exp_time	30000.000000	[s] Scheduled observation exposure time
ascdsver	8.4.3	Processing system revision	ontime	30038.459801078	Sum of GTIs [s]
caldsver	4.4.8	 	ontime2	30038.295641065	Sum of GTIs [s]
date	2012-02-28T18:28:32	Date and time of file creation	ontime3	30038.336681068	Sum of GTIs [s]
revision	2	Processing version of data	ontime5	30038.418761075	Sum of GTIs [s]
			ontime6	30038.377721071	Sum of GTIs [s]
			ontime7	30038.459801078	Sum of GTIs [s]
			l1events	1239920	Number of level 1 events

2.1.4 Events

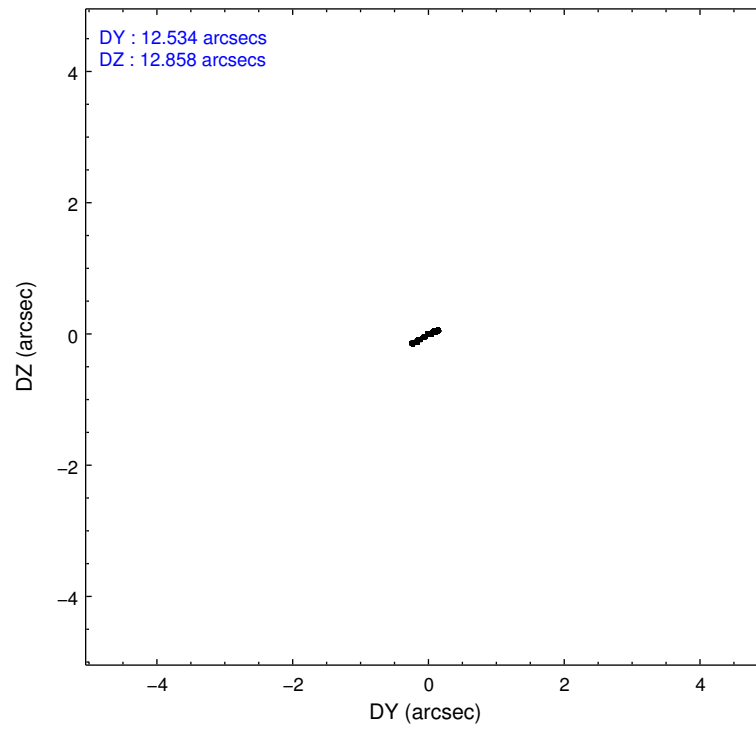
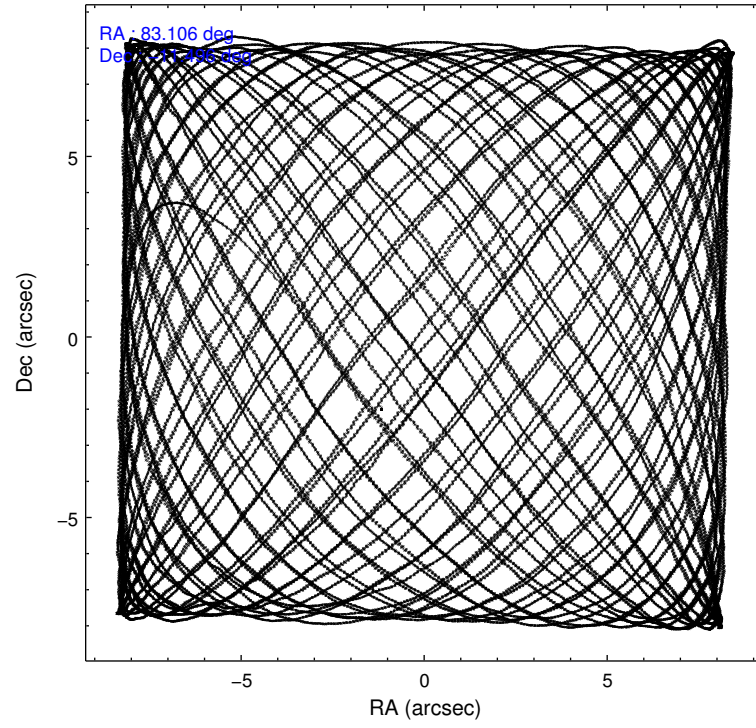
	ccd 2	ccd 3	ccd 5	ccd 6	ccd 7
level 1 events	202282	195284	334220	211946	296188
rejected events	179417	173822	164162	186776	145003
rejected %	88%	89%	49%	88%	48%

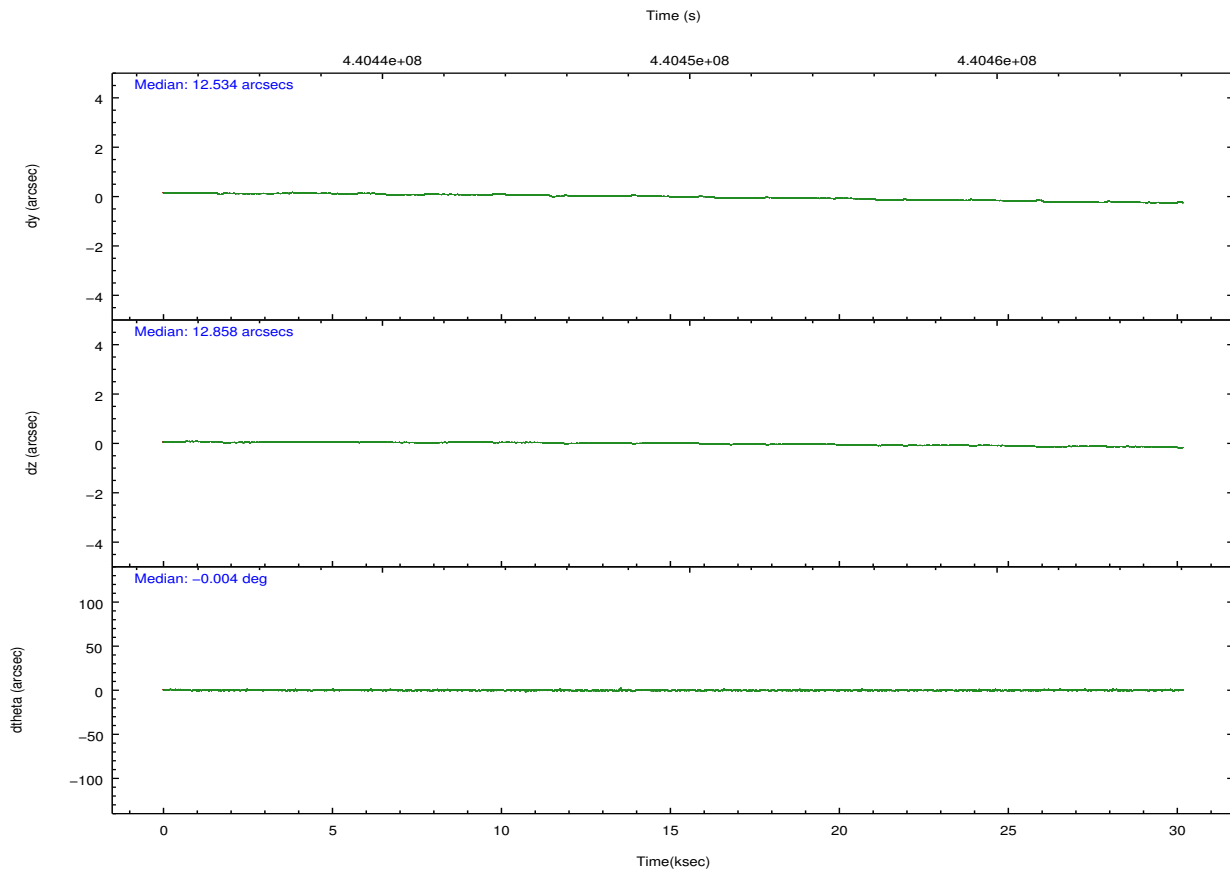
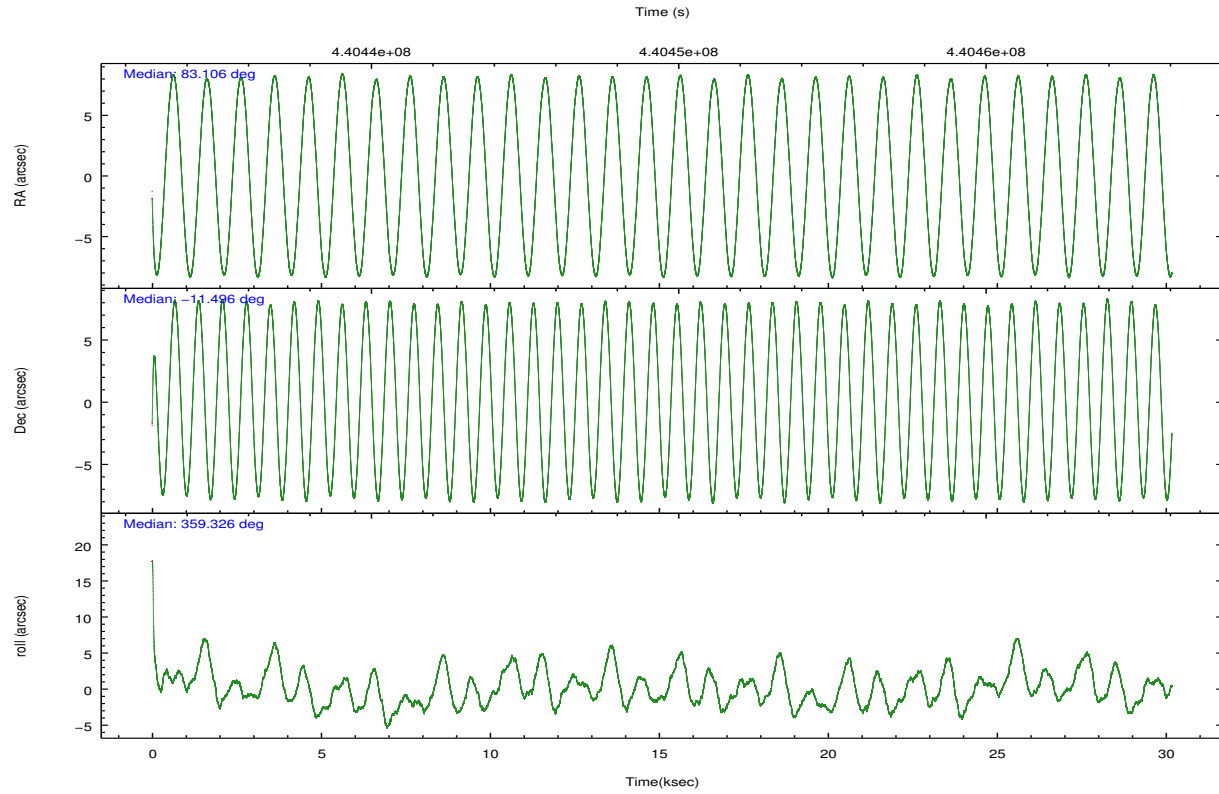
	ccd 2	ccd 3	ccd 5	ccd 6	ccd 7
grade 0 events	8923	7697	29669	9795	19865
	4%	3%	8%	4%	6%
grade 1 events	112	100	589	104	327
	0%	0%	0%	0%	0%
grade 2 events	5201	4710	47938	5424	33291
	2%	2%	14%	2%	11%
grade 3 events	2398	2358	5273	2337	13722
	1%	1%	1%	1%	4%
grade 4 events	2261	2349	4698	2333	13628
	1%	1%	1%	1%	4%
grade 5 events	7681	9346	23611	9482	26200
	3%	4%	7%	4%	8%
grade 6 events	4090	4356	82502	5286	70713
	2%	2%	24%	2%	23%
grade 7 events	171616	164368	139940	177185	118442
	84%	84%	41%	83%	39%

2.2 Compared Parameters

Parameter	Planned	Actual	Parameter	Planned	Actual
Instrument	ACIS	ACIS	Obspar format version number	7	7
Detector	ACIS-23567	ACIS-23567	Obspar file type	PREDICTED	ACTUAL
Grating	NONE	NONE	Obspar update status	NONE	UPDATED
Data mode	FAINT	FAINT	Number of optional ACIS chips dropped	0	0
Observation mode	POINTING	POINTING	On-chip summing requested	N	N
[deg] Pointing RA	83.081721	83.10584494653995	Subarray requested	NONE	NONE
[deg] Pointing Dec	-11.510068	-11.49636567351797	Alternating exposures requested	N	N
[deg] Pointing Roll	359.171203	359.3326467227106	[s] Primary exposure time	0.000000	3.1
[mm] SIM focus pos	-0.684267	-0.6828225247311905			
[mm] SIM defocus	0	0.001444936568705701			
[mm] SIM translation stage pos	-190.132523	-190.1425803651734			
[mm] SIM translation stage offset	0	0.01005778216563158			
[s] Observation start time (MET)	440434534.184000	440433407.25058			
Observation start date	2011-12-16T14:54:28	2011-12-16T14:36:47			
[s] Observation end time (MET)	440464534.184000	440465473.35227			
Observation end date	2011-12-16T23:14:28	2011-12-16T23:31:13			
Read mode	TIMED	TIMED			

2.3 Aspect



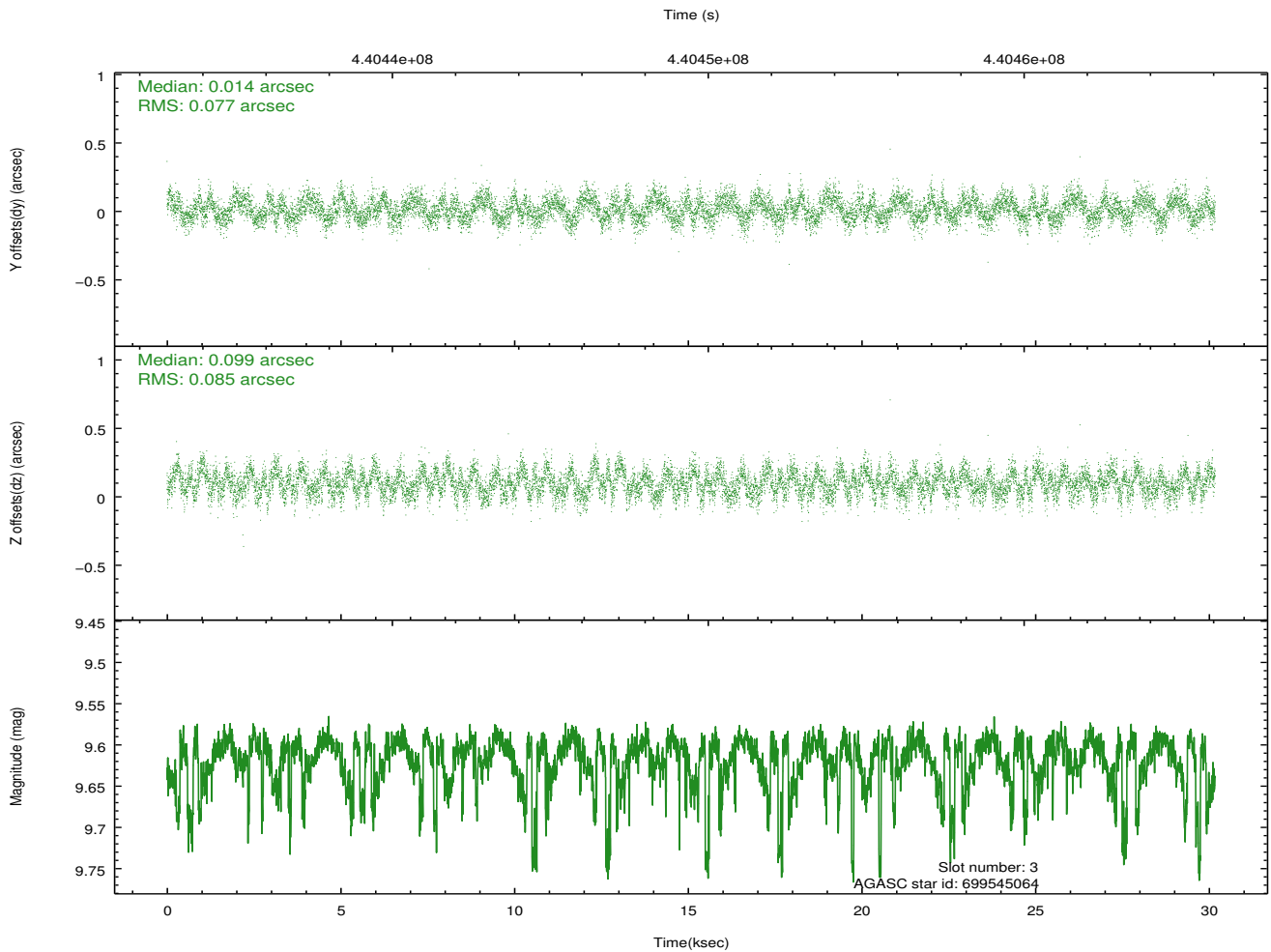
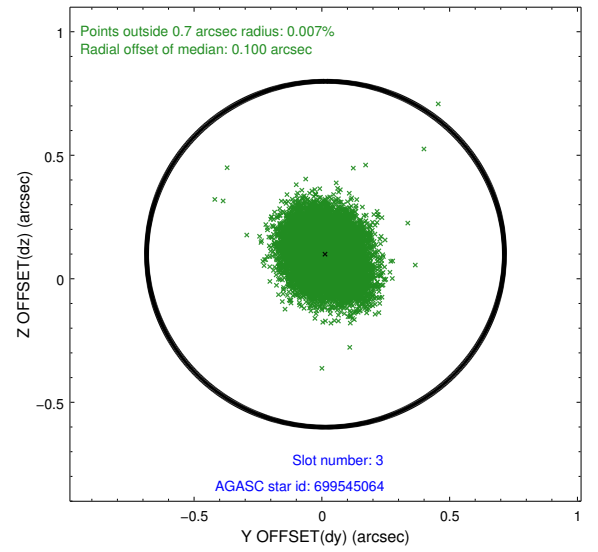
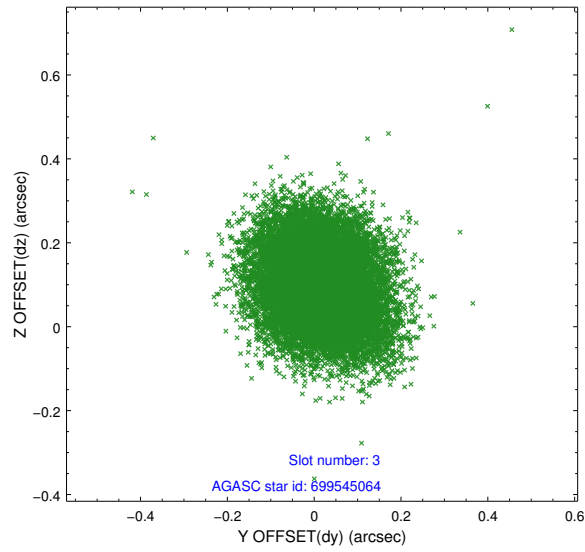


Slot Statistics

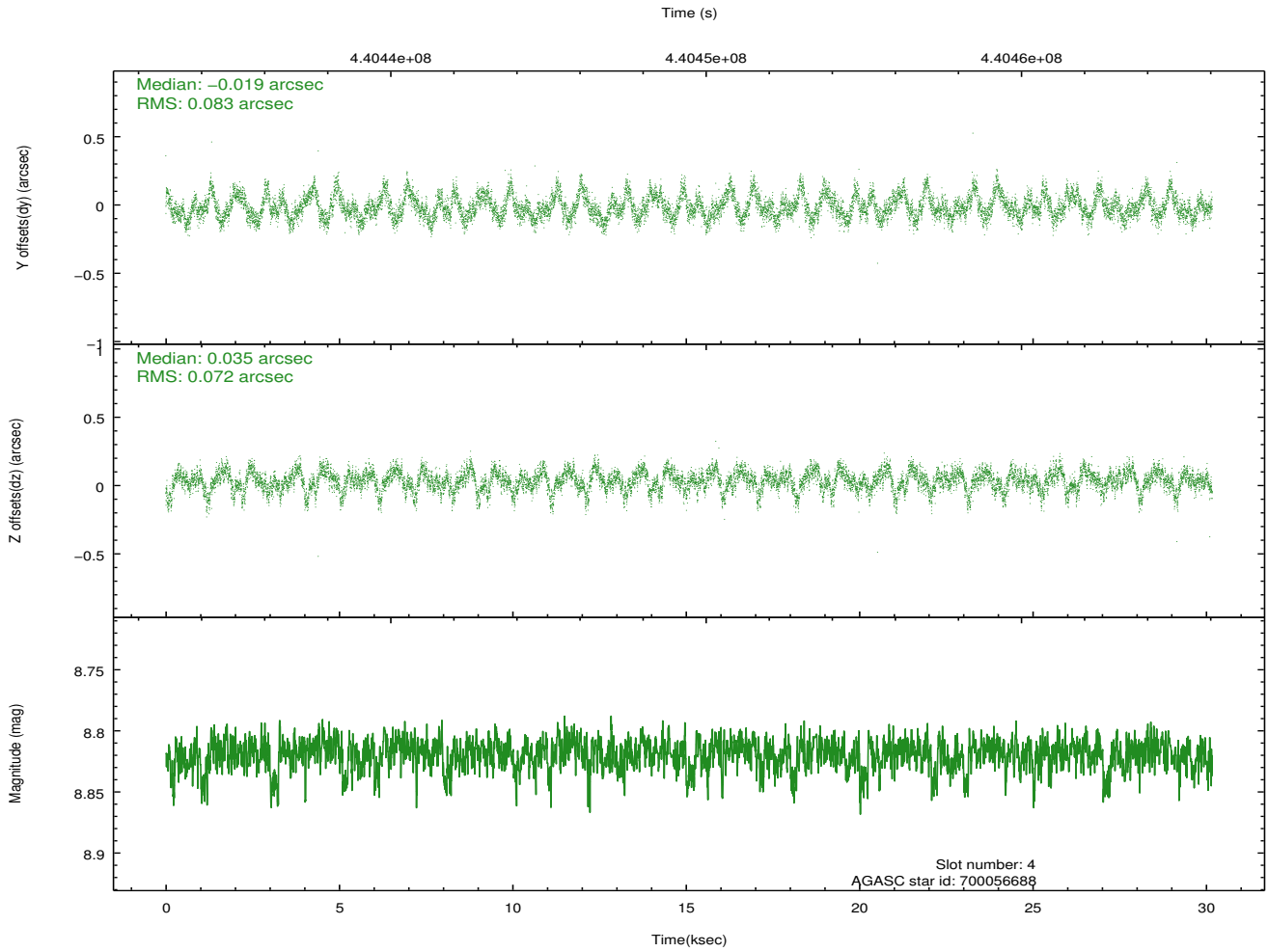
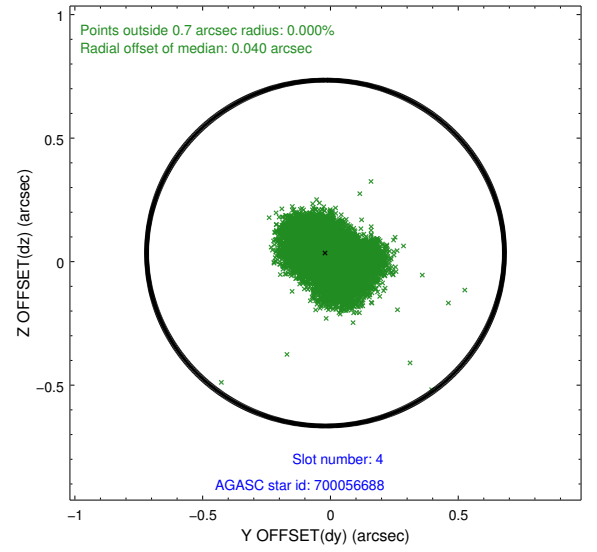
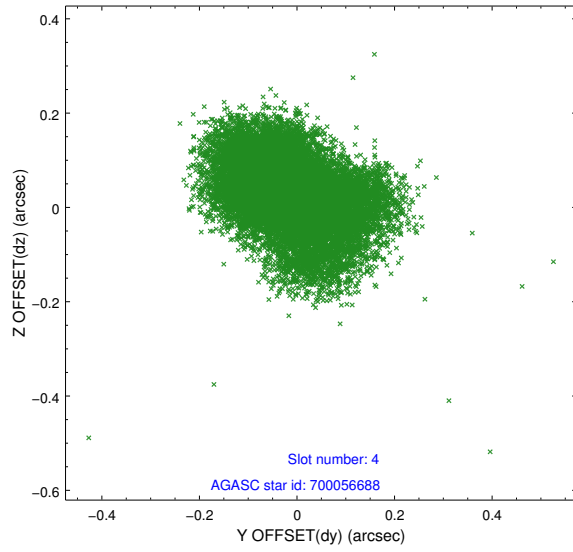
slot	status	id	mag	n_pts	med_dy	med_dz	dr1	dr2	ra	dec	mean_y	mean_z
0	FID	ACIS-S-2	7.04	7361	-0.084	-0.055	0.007	0.012	0.000000	0.000000	-765.51	-1734.16
1	FID	ACIS-S-4	7.13	7361	0.141	0.023	0.007	0.012	0.000000	0.000000	2147.97	174.31
2	FID	ACIS-S-6	7.27	7361	-0.085	0.040	0.007	0.012	0.000000	0.000000	396.58	811.81
3	GUIDE	699545064	9.61	14617	0.014	0.099	0.123	0.194	82.747921	-11.055421	-1202.79	1618.20
4	GUIDE	700056688	8.82	14710	-0.019	0.035	0.118	0.190	82.529242	-11.440323	-1952.73	220.76
5	GUIDE	700058448	8.95	14709	0.059	-0.017	0.108	0.170	83.520899	-11.359679	1542.32	562.98
6	GUIDE	700061592	9.61	14701	0.065	0.071	0.136	0.225	83.589504	-11.765466	1803.31	-894.64
7	GUIDE	699539072	9.38	14642	-0.133	-0.189	0.155	0.240	83.425289	-10.855579	1180.69	2372.89

2.4 Star Slots

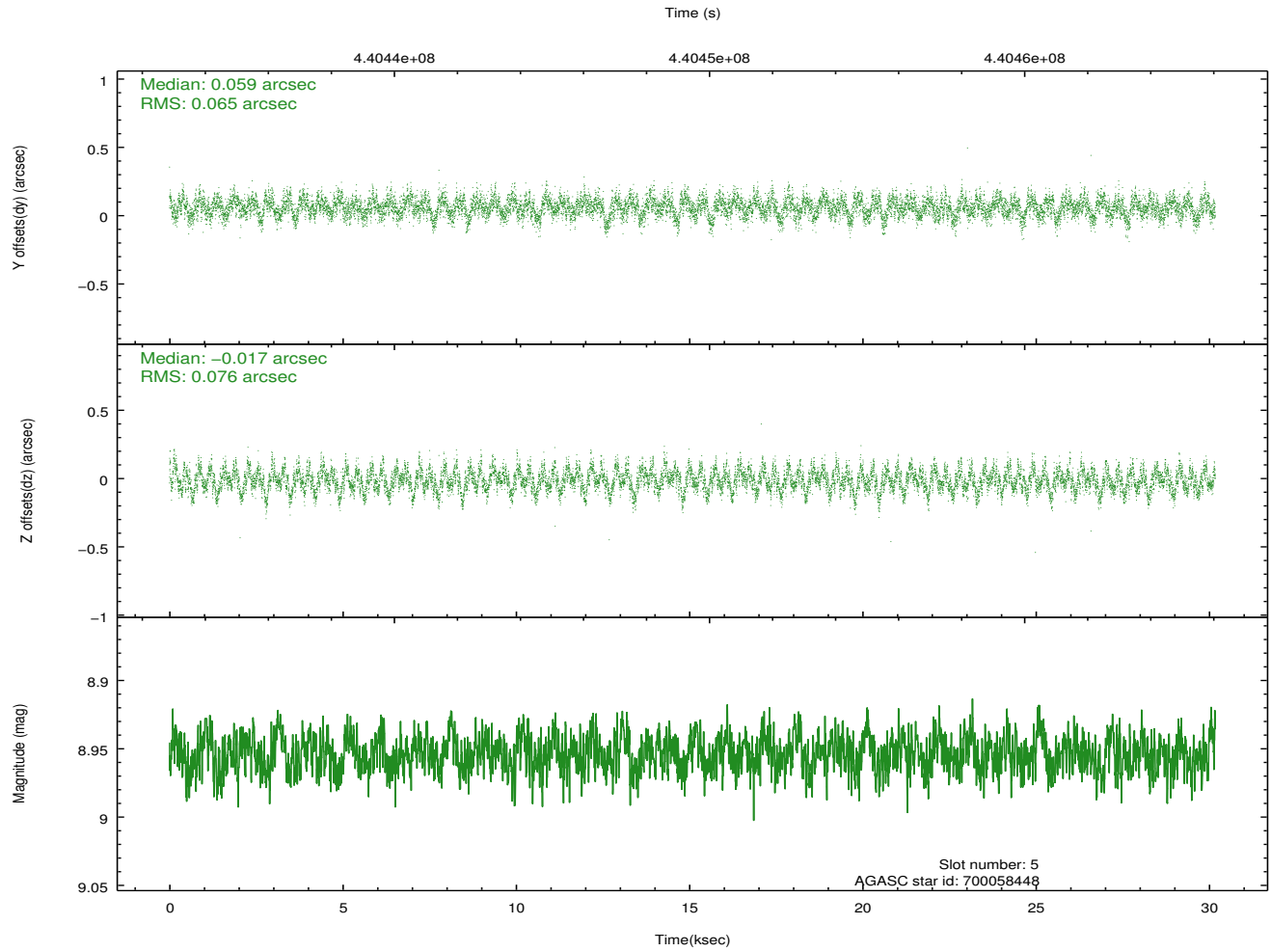
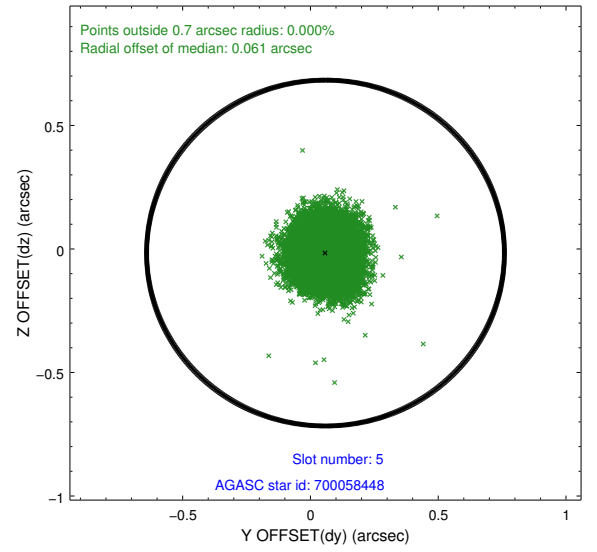
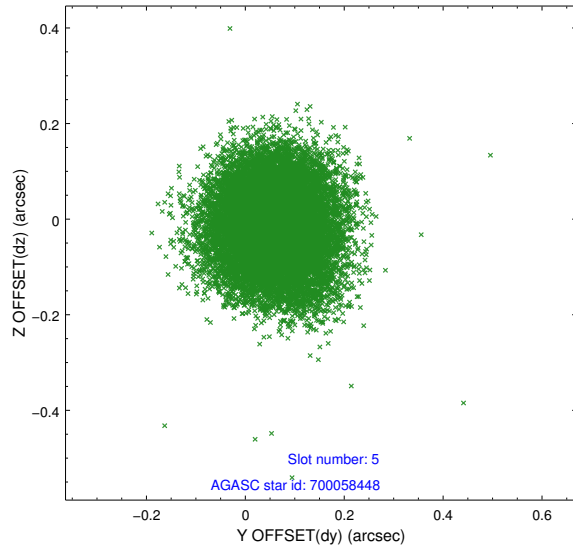
2.4.1 Slot 3



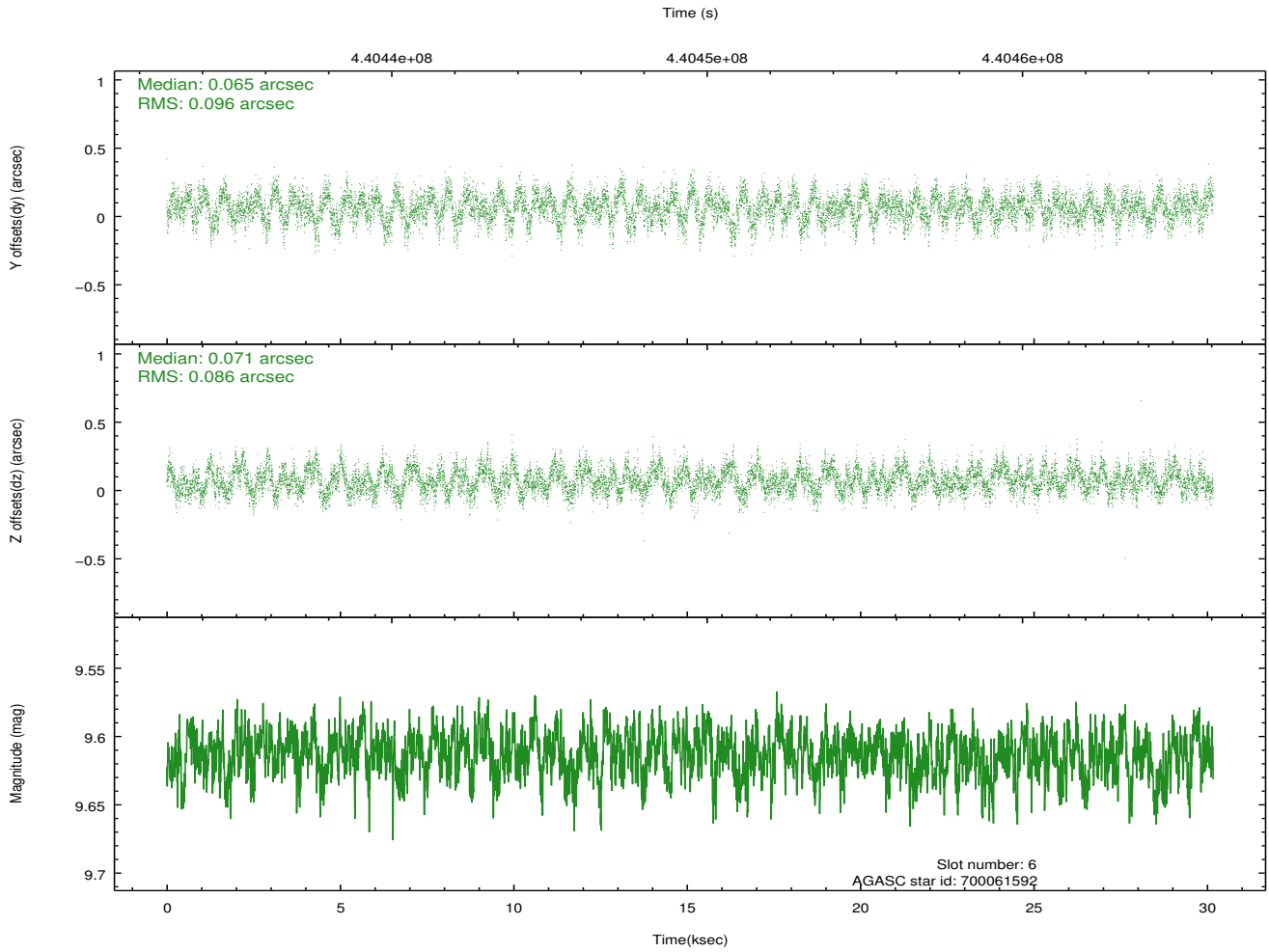
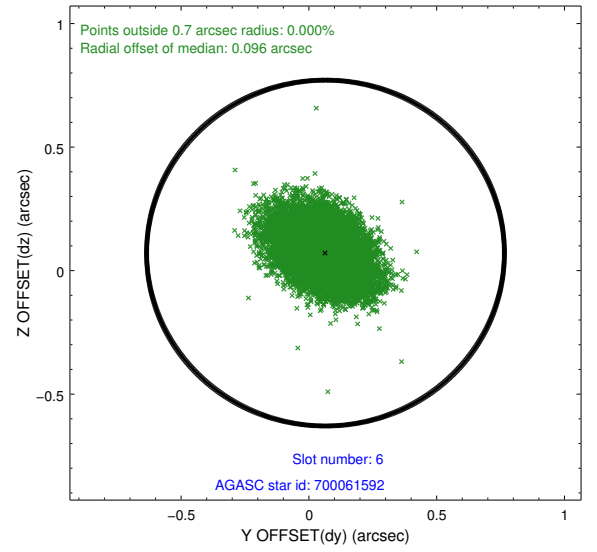
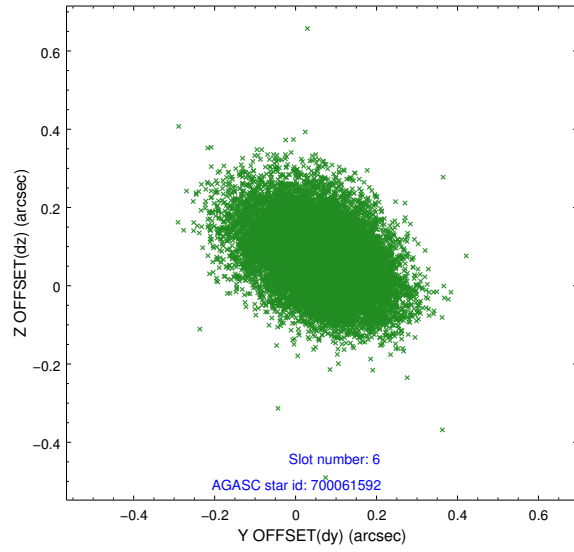
2.4.2 Slot 4



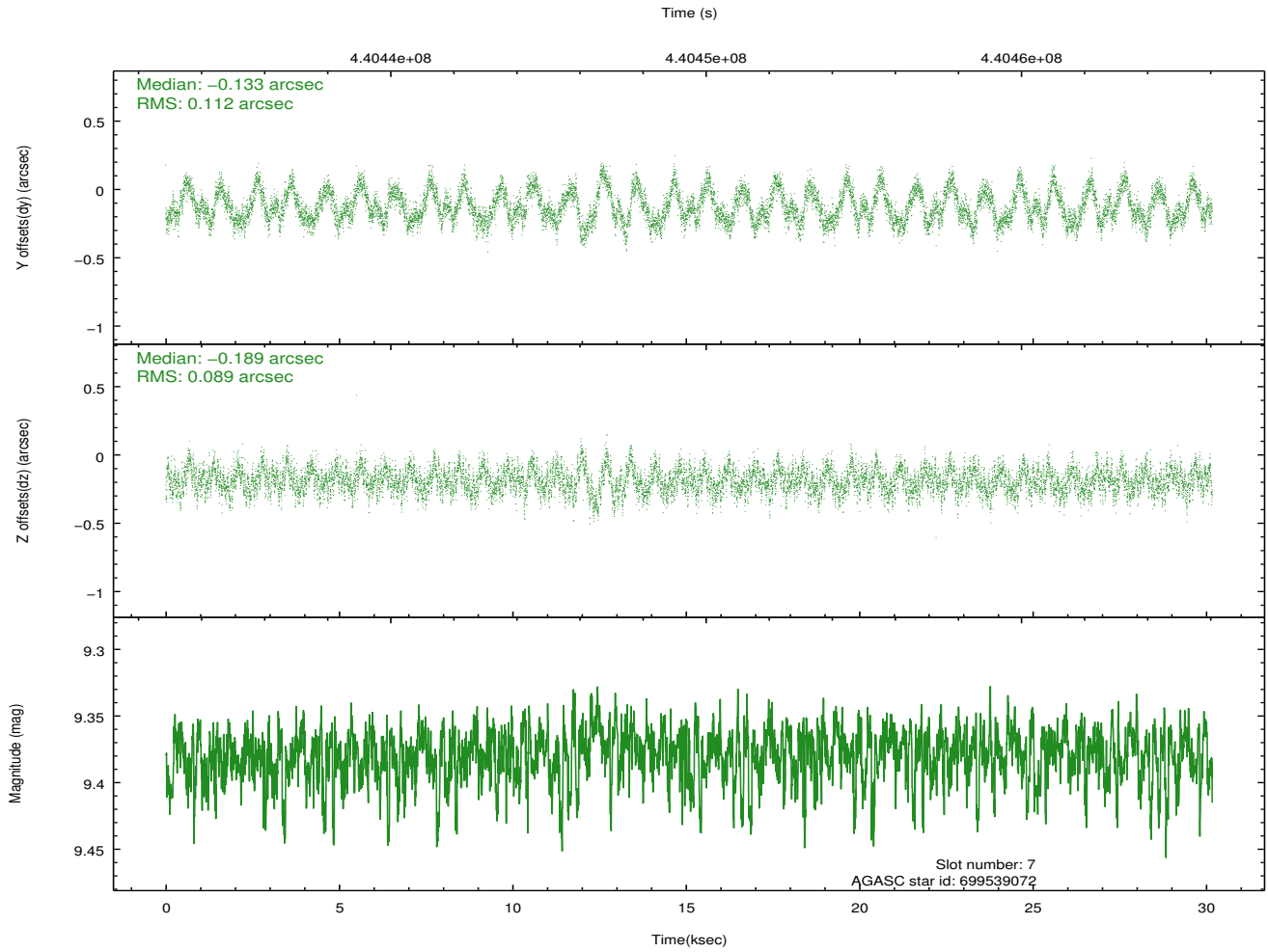
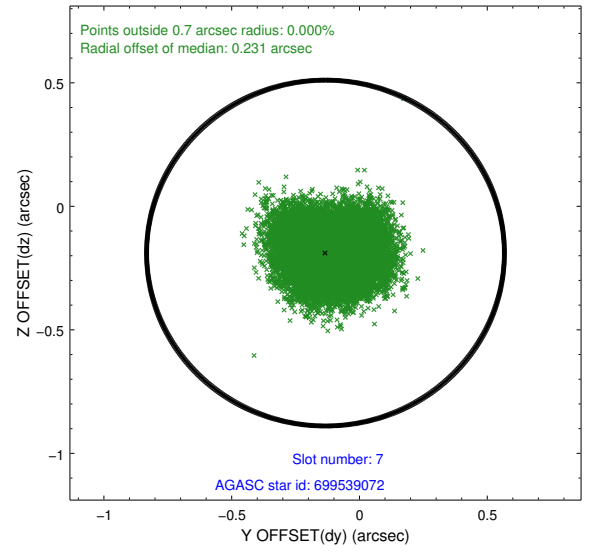
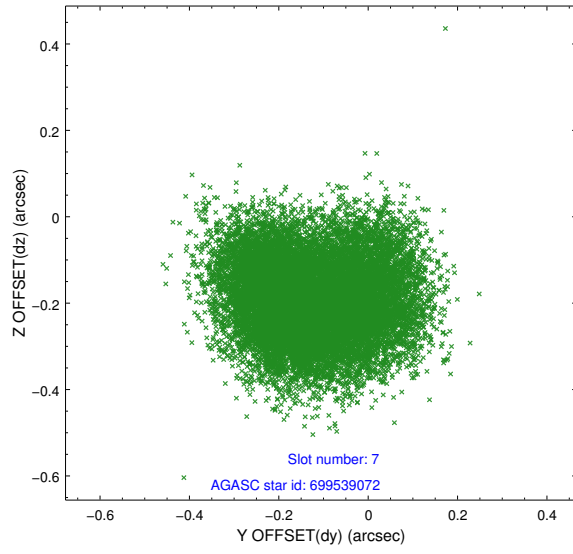
2.4.3 Slot 5



2.4.4 Slot 6

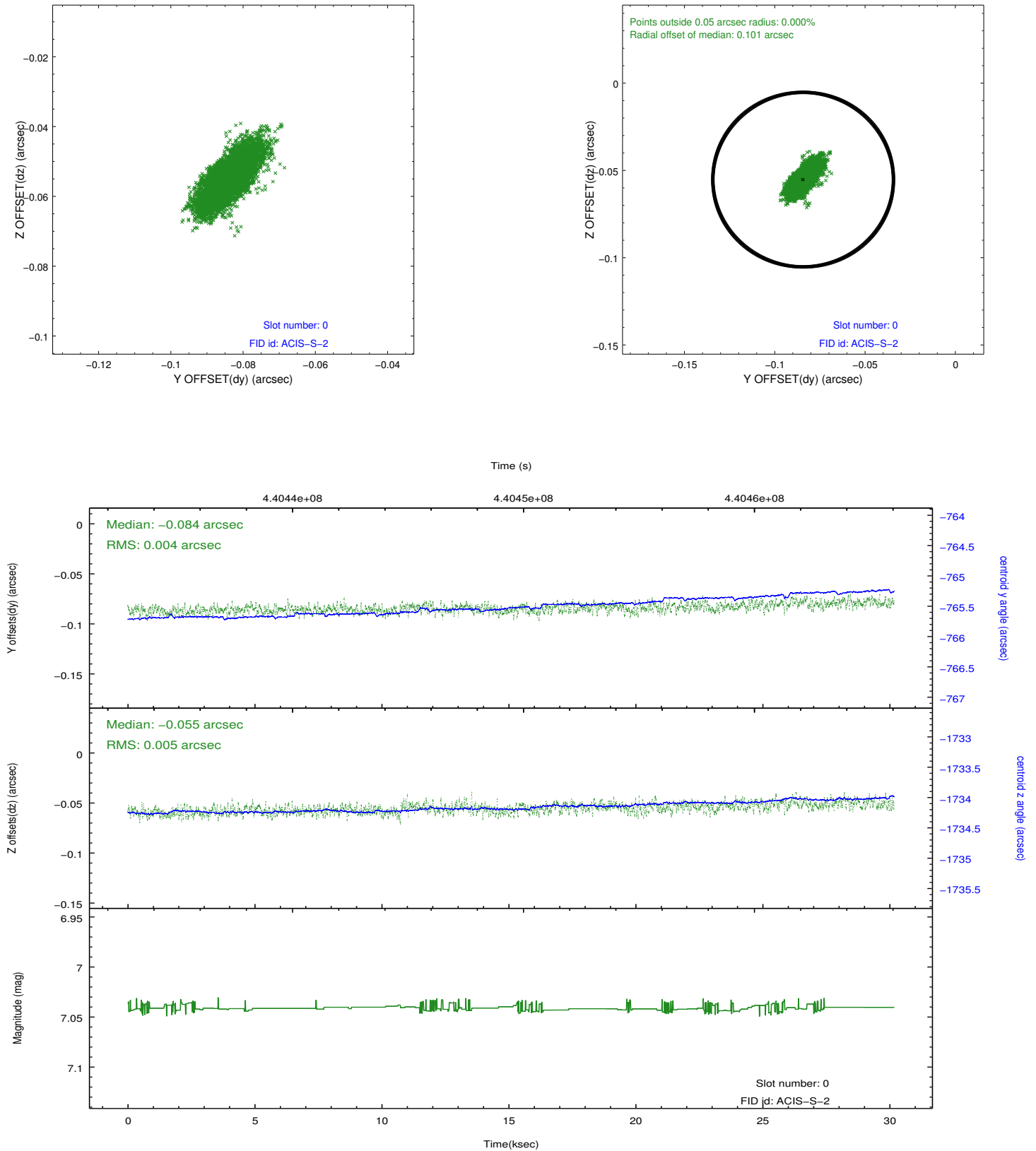


2.4.5 Slot 7

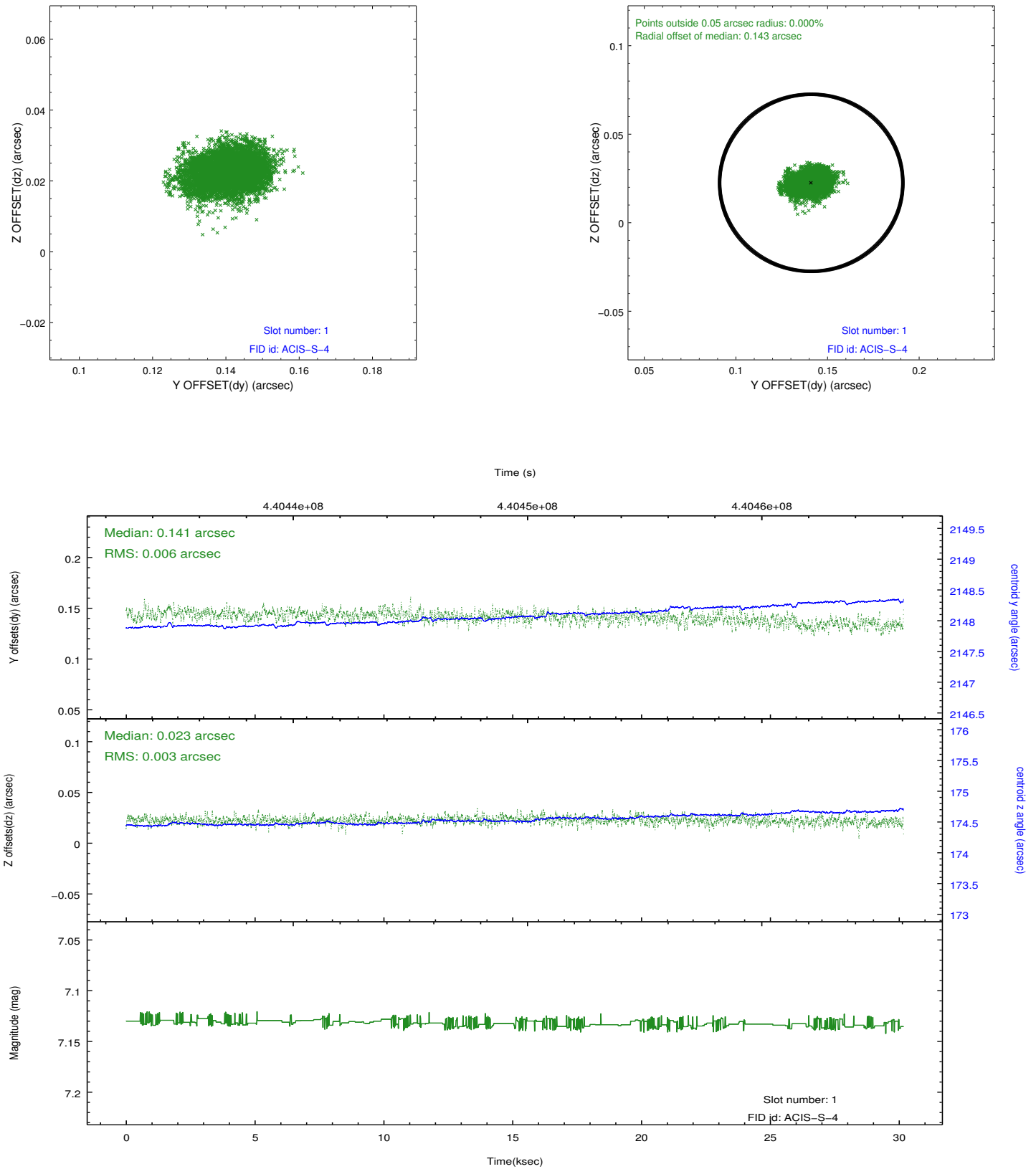


2.5 FID Slots

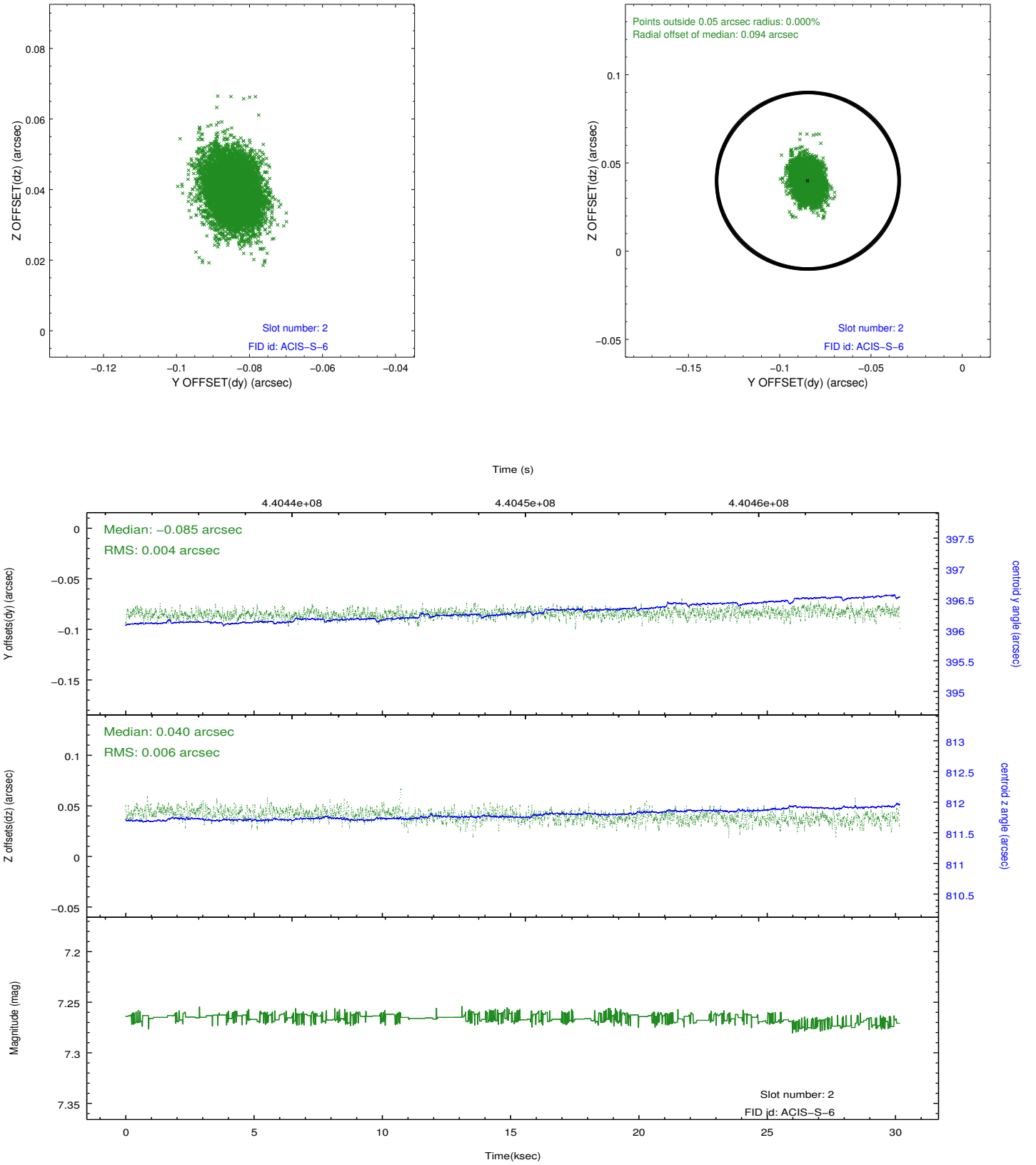
2.5.1 Slot 0



2.5.2 Slot 1



2.5.3 Slot 2



A Summary

A.1 Status

V&V Scientist	Jen Lauer
V&V Date (YYYY-MM-DD)	2012.02.29
V&V Edition	1
V&V Disposition and Status	OK
V&V Charge Time	30.03845979923

A.2 Comments