

V&V Reference Report

L2 ASCDS Version : 8.4.4

Observation 13594 - L2 Version 1
Chandra X-Ray Center

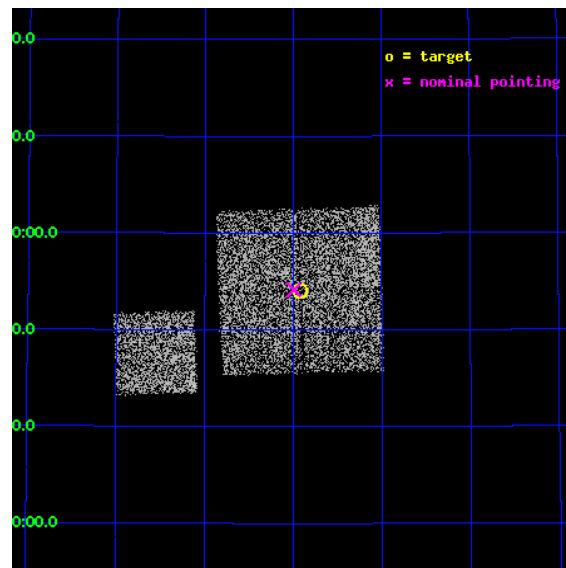
L2 Processing Date : May 27 2012

Contents

1	Front	2
2	OBI	3
2.1	OBI	3
2.1.1	Images	3
2.1.2	Bias	3
2.1.3	Parameters	4
2.1.4	Events	4
2.2	Compared Parameters	5
2.3	Aspect	6
2.4	Star Slots	9
2.4.1	Slot 3	9
2.4.2	Slot 4	10
2.4.3	Slot 5	11
2.4.4	Slot 6	12
2.4.5	Slot 7	13
2.5	FID Slots	14
2.5.1	Slot 0	14
2.5.2	Slot 1	15
2.5.3	Slot 2	16
A	Summary	17
A.1	Status	17
A.2	Comments	17

1 Front

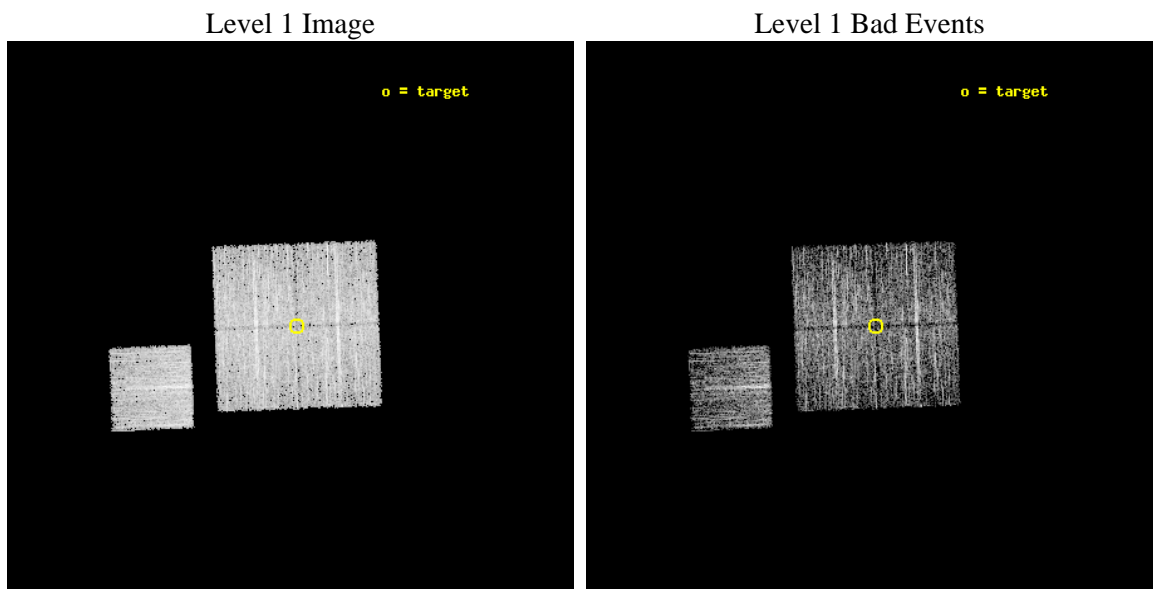
seq_num	801155	Sequence number
obs_id	13594	Observation id
title	To The Outer Limits of Clusters with Chandra and Suzaku	Proposal t
observer	Dr. Eric Miller	Principal investigator
object	A773	Source name
dtcycle	0	
cycle	P	events from which exps? Prim/Second/Both
ra_targ	139.23056	Observer's specified target RA [deg]
dec_targ	51.900001	Observer's specified target Dec [deg]
ra_nom	139.24823831098	Nominal RA [deg]
dec_nom	51.902402373363	Nominal Dec [deg]
roll_nom	267.95685848762	Nominal Roll [deg]
revision	1	Processing version of data
ontime	5077.7590787411	Sum of GTIs [s]
livetime	5011.4144181855	Livetime [s]
ontime0	5080.9000390768	Sum of GTIs [s]
ontime1	5077.7590787411	Sum of GTIs [s]
ontime2	5077.7590787411	Sum of GTIs [s]
ontime3	5080.9000390768	Sum of GTIs [s]
ontime6	5077.7590788007	Sum of GTIs [s]
l2events	15185	Number of level 2 events



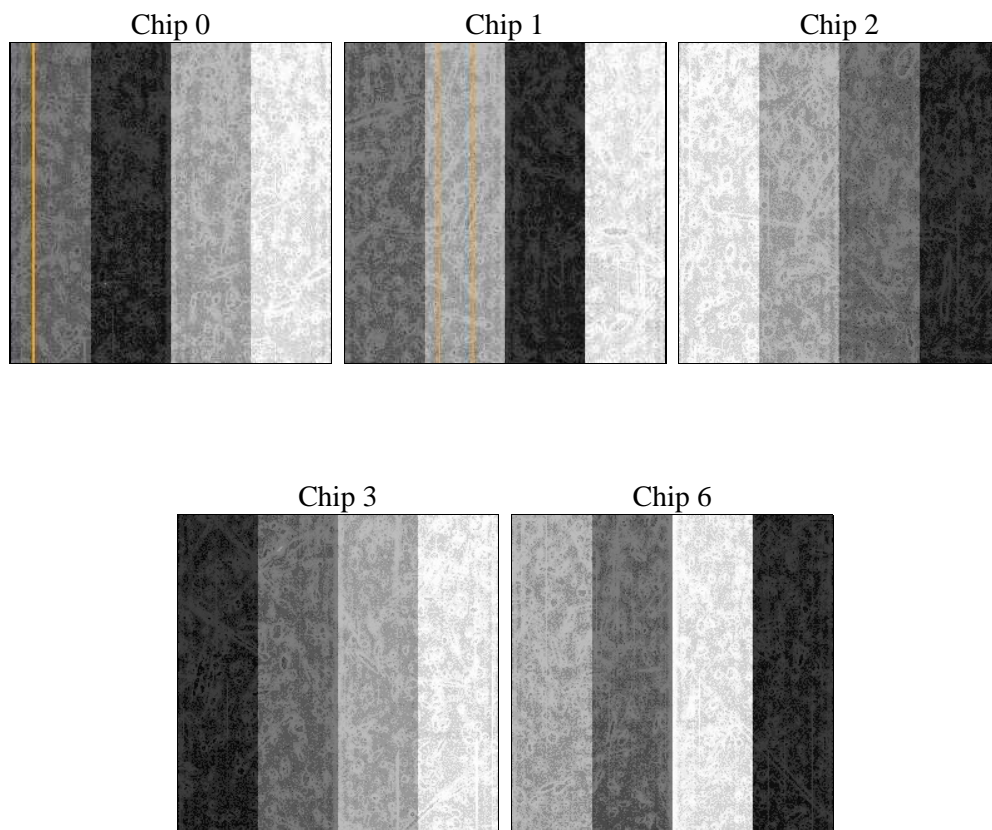
2 OBI

2.1 OBI

2.1.1 Images



2.1.2 Bias



2.1.3 Parameters

obi_num	0	Obi number	sched_exp_time	5000.000000	[s] Scheduled observation exposure time
ascdsver	8.4.4	Processing system revision	ontime	5077.7590787411	Sum of GTIs [s]
caldsver	4.4.9	 	ontime0	5080.9000390768	Sum of GTIs [s]
date	2012-05-27T16:03:03	Date and time of file creation	ontime1	5077.7590787411	Sum of GTIs [s]
revision	1	Processing version of data	ontime2	5077.7590787411	Sum of GTIs [s]
			ontime3	5080.9000390768	Sum of GTIs [s]
			ontime6	5077.7590788007	Sum of GTIs [s]
			l1events	149733	Number of level 1 events

2.1.4 Events

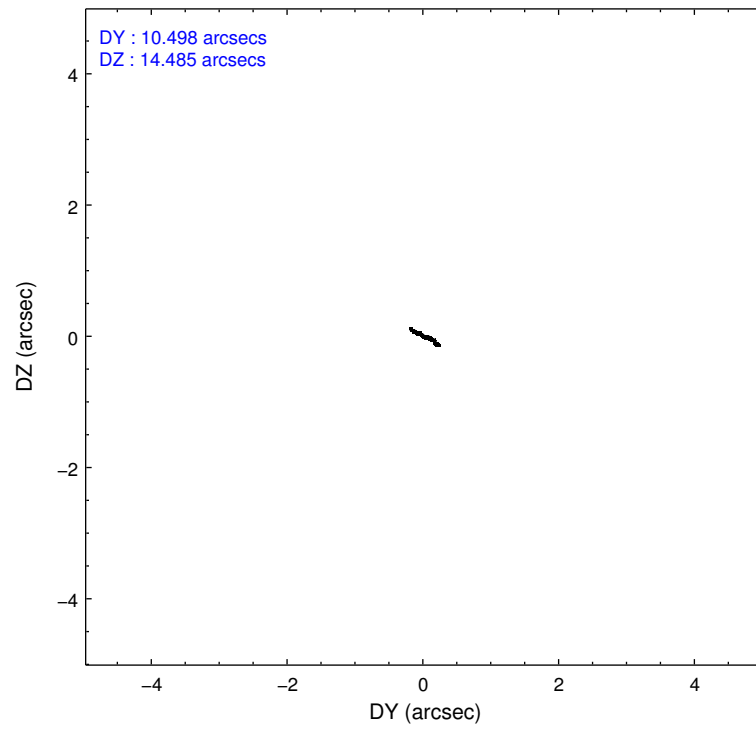
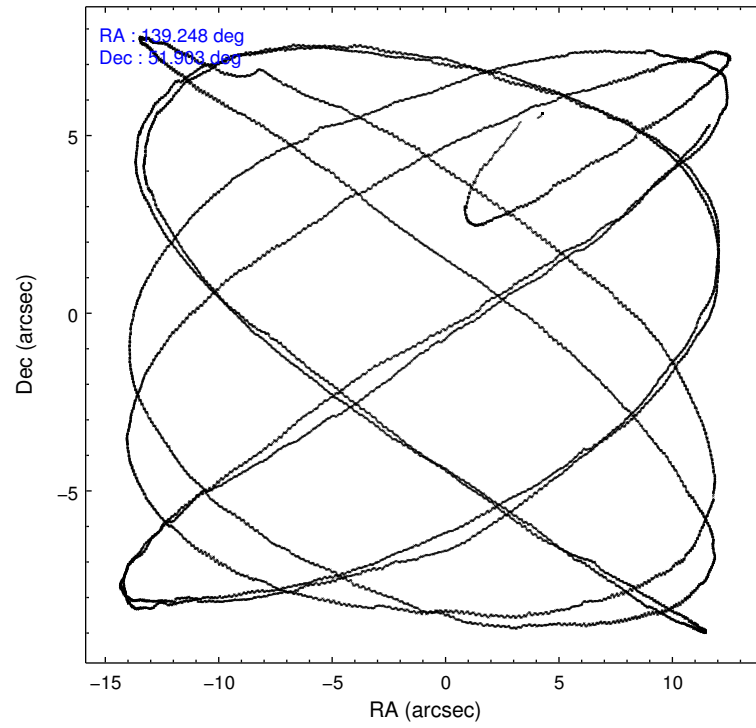
	ccd 0	ccd 1	ccd 2	ccd 3	ccd 6
level 1 events	28288	28652	30238	31028	31527
rejected events	24780	24739	26644	27749	27695
rejected %	87%	86%	88%	89%	87%

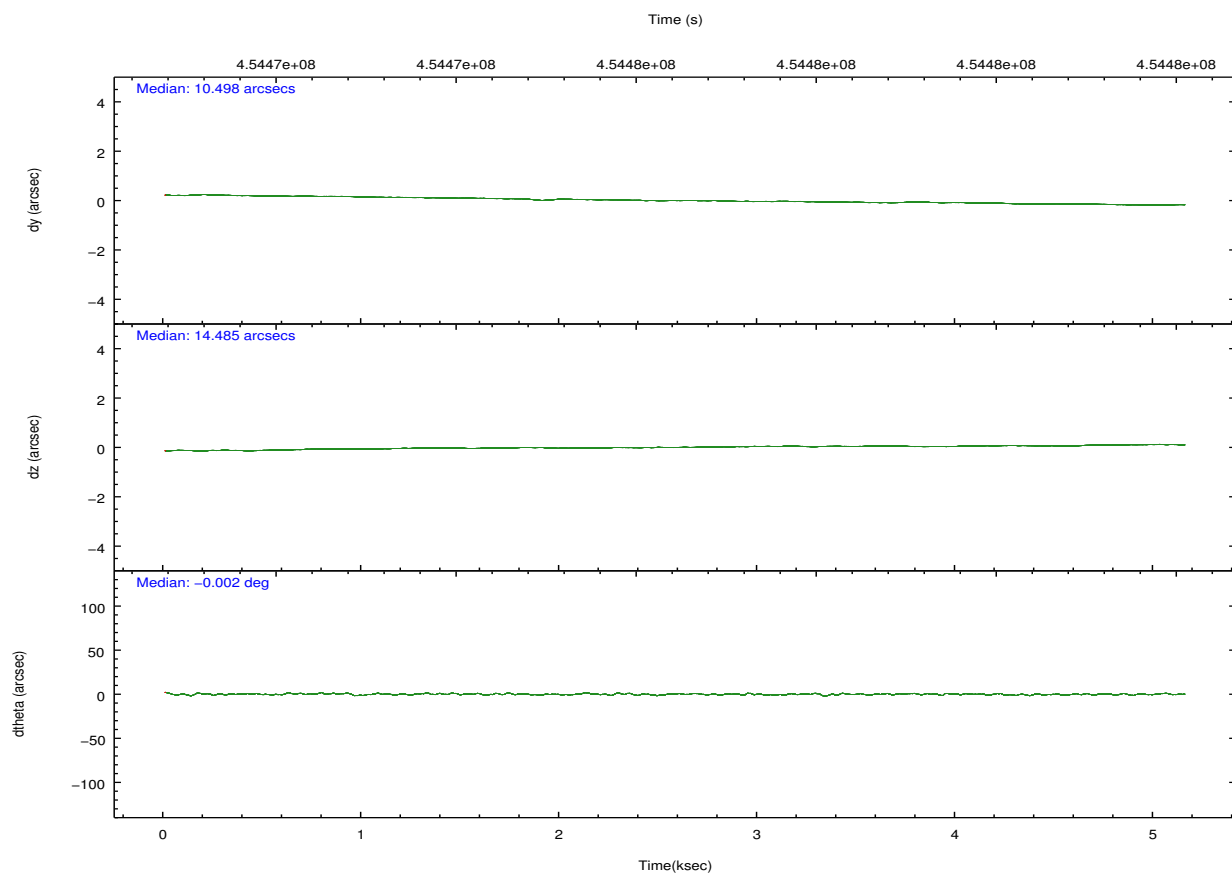
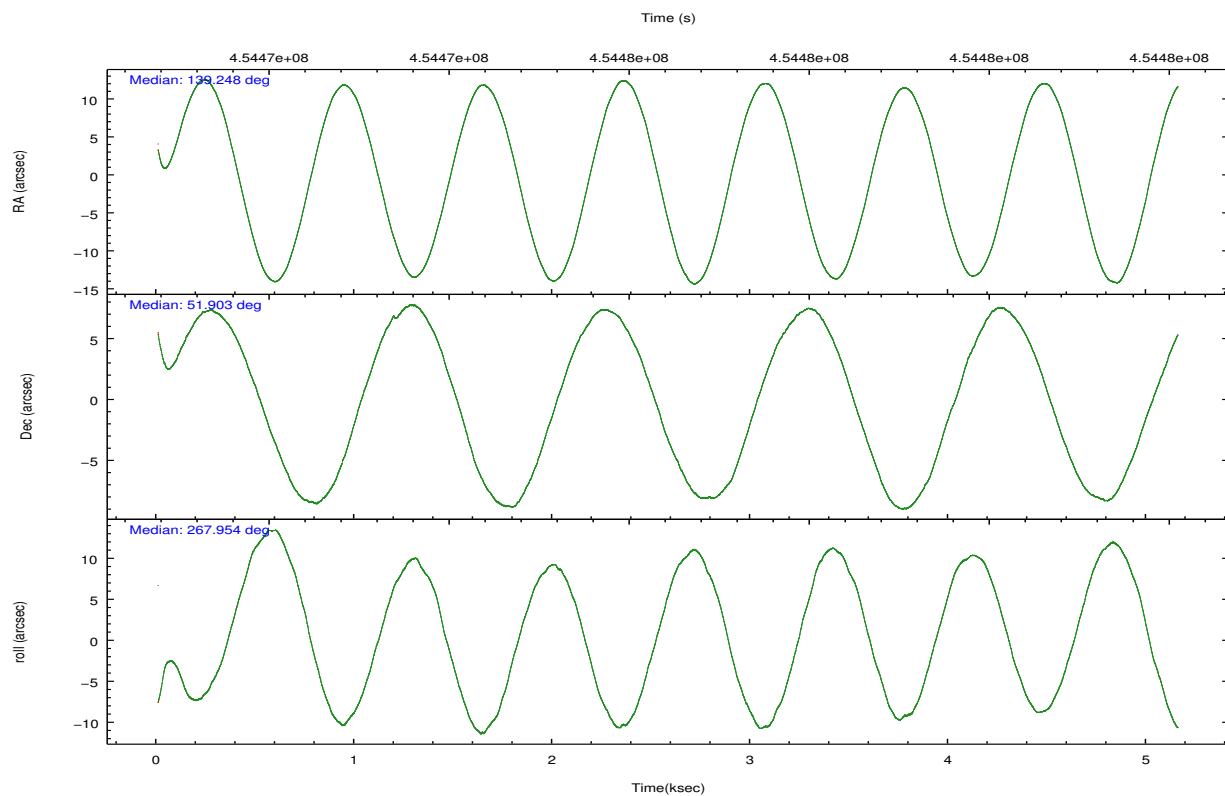
	ccd 0	ccd 1	ccd 2	ccd 3	ccd 6
grade 0 events	1211	1378	1272	1108	1356
	4%	4%	4%	3%	4%
grade 1 events	21	18	17	15	14
	0%	0%	0%	0%	0%
grade 2 events	876	927	902	785	874
	3%	3%	2%	2%	2%
grade 3 events	362	419	345	360	390
	1%	1%	1%	1%	1%
grade 4 events	353	380	351	340	358
	1%	1%	1%	1%	1%
grade 5 events	1233	1423	1243	1540	1511
	4%	4%	4%	4%	4%
grade 6 events	710	810	726	688	855
	2%	2%	2%	2%	2%
grade 7 events	23522	23297	25382	26192	26169
	83%	81%	83%	84%	83%

2.2 Compared Parameters

Parameter	Planned	Actual	Parameter	Planned	Actual
Instrument	ACIS	ACIS	Obspar format version number	7	7
Detector	ACIS-01236	ACIS-01236	Obspar file type	PREDICTED	ACTUAL
Grating	NONE	NONE	Obspar update status	NONE	UPDATED
Data mode	VFAINT	VFAINT	CCD I0 on	Y	Y
Observation mode	POINTING	POINTING	CCD I1 on	Y	Y
[deg] Pointing RA	139.227105	139.2482383109811	CCD I2 on	Y	Y
[deg] Pointing Dec	51.926600	51.90240237336346	CCD I3 on	Y	Y
[deg] Pointing Roll	267.764832	267.9568584876189	CCD S0 on	N	N
[mm] SIM focus pos	-0.782348	-0.7809083437167272	CCD S1 on	N	N
[mm] SIM defocus	0	0.001439871863259334	CCD S2 on	O1	Y
[mm] SIM translation stage pos	-233.592463	-233.5874344608287	CCD S3 on	N	N
[mm] SIM translation stage offset	0	-0.005018542100998502	CCD S4 on	N	N
[s] Observation start time (MET)	454472804.184000	454471581.46932	CCD S5 on	N	N
Observation start date	2012-05-27T02:25:38	2012-05-27T02:06:21	Number of optional ACIS chips dropped	0	0
[s] Observation end time (MET)	454477804.184000	454478685.2322	On-chip summing requested	N	N
Observation end date	2012-05-27T03:48:58	2012-05-27T04:04:45	Subarray requested	NONE	NONE
Read mode	TIMED	TIMED	Alternating exposures requested	N	N
			[s] Primary exposure time	0.000000	3.1

2.3 Aspect



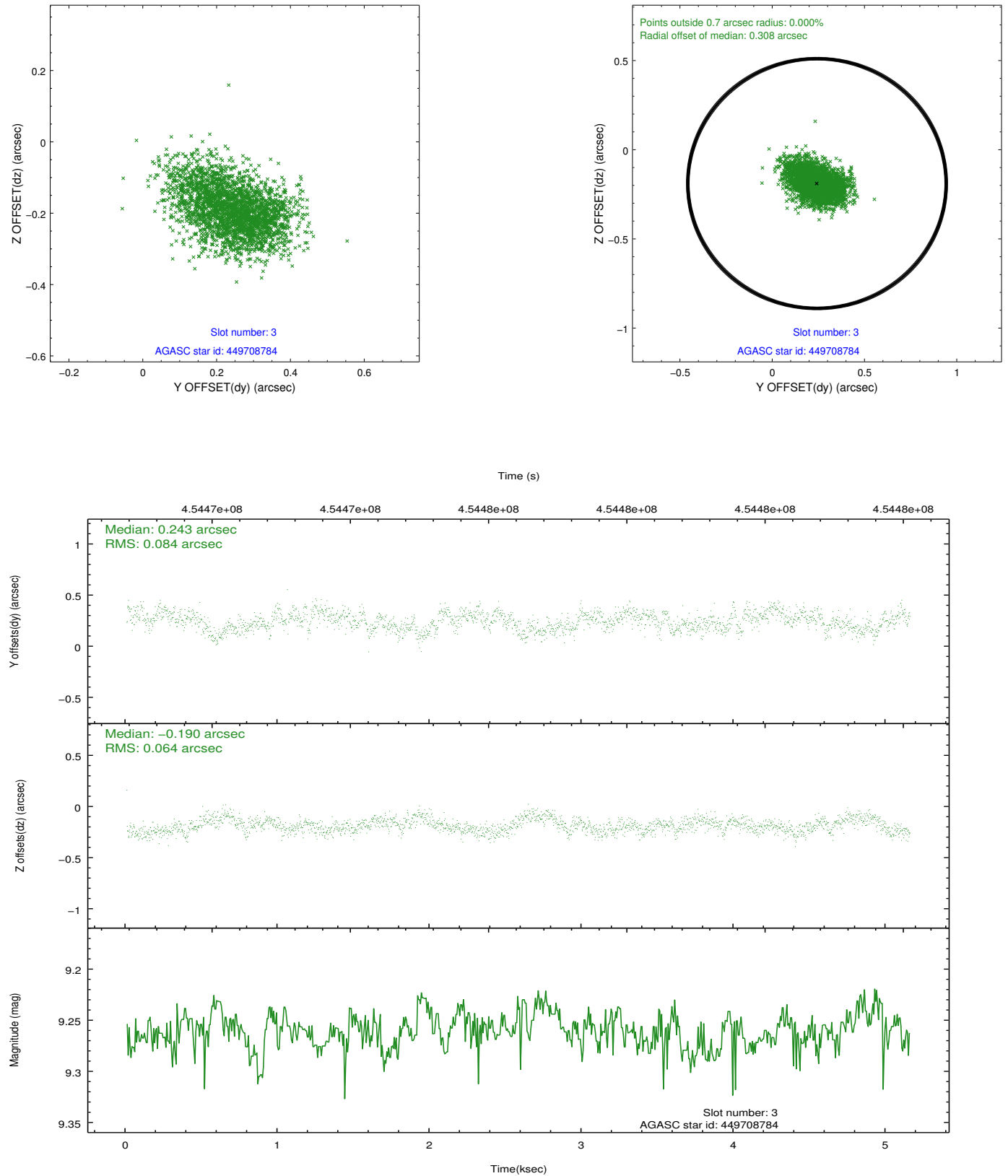


Slot Statistics

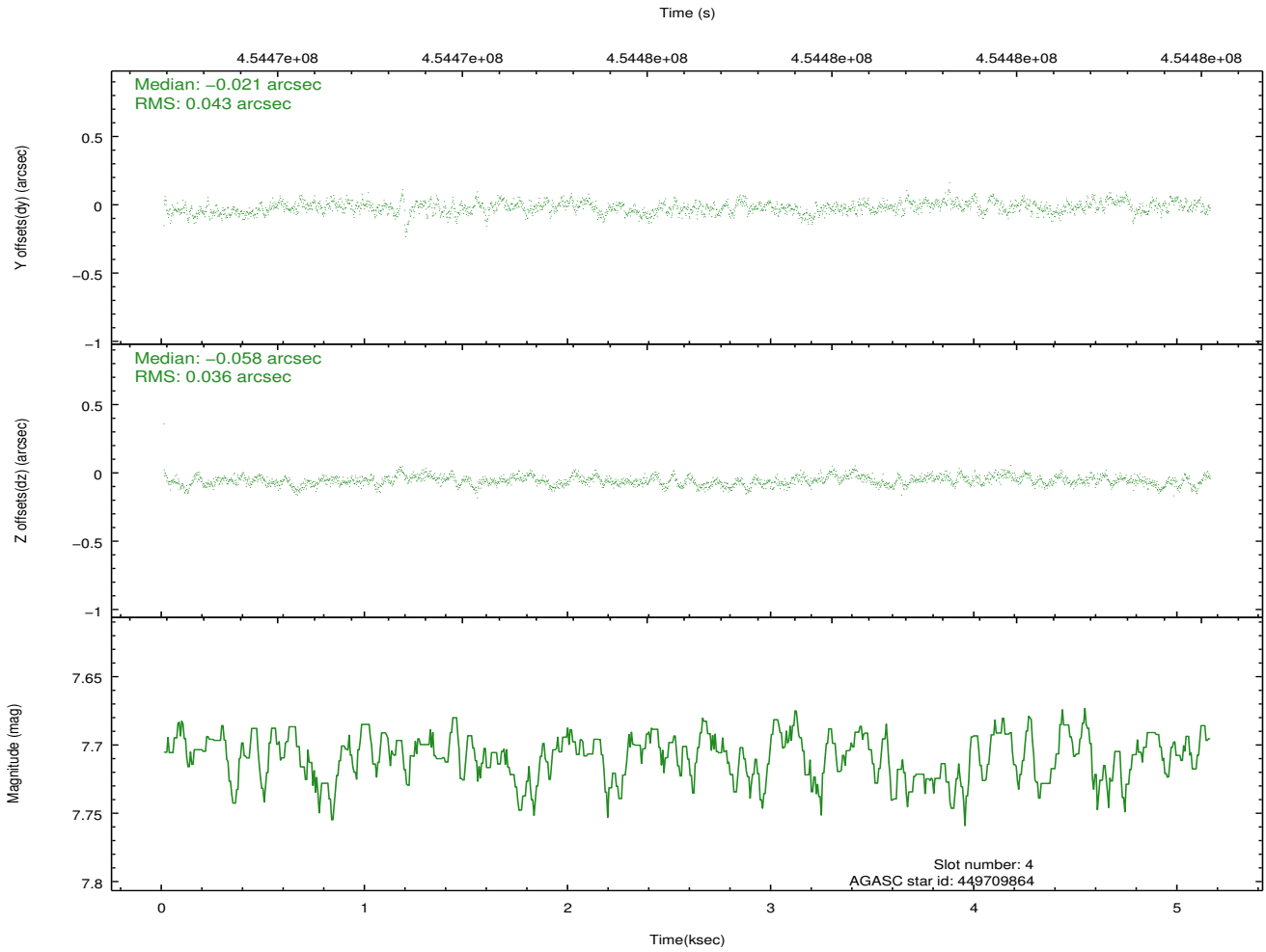
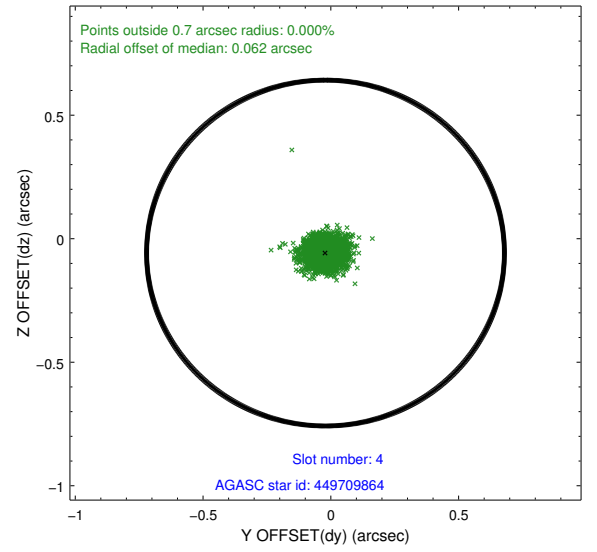
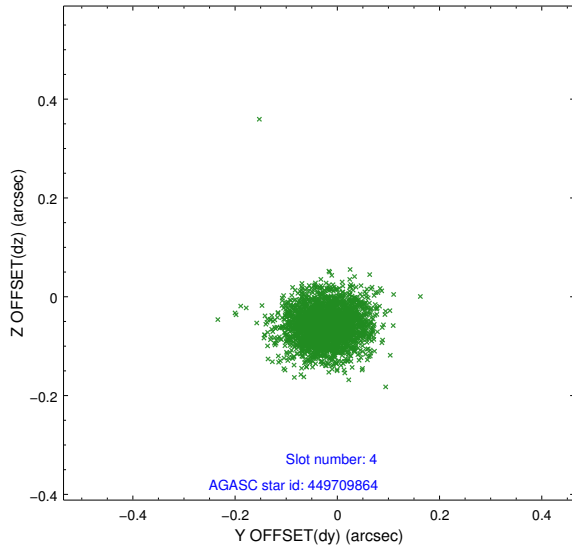
slot	status	id	mag	n_pts	med_dy	med_dz	dr1	dr2	ra	dec	mean_y	mean_z
0	FID	ACIS-I-1	7.05	1257	-0.045	0.050	0.010	0.020	0.000000	0.000000	929.02	-838.03
1	FID	ACIS-I-4	6.99	1257	0.012	0.018	0.008	0.013	0.000000	0.000000	2149.79	1061.14
2	FID	ACIS-I-6	7.05	1257	-0.064	-0.001	0.010	0.019	0.000000	0.000000	396.44	1704.66
3	GUIDE	449708784	9.26	2509	0.243	-0.190	0.113	0.182	139.281247	51.322176	2170.17	205.91
4	GUIDE	449709864	7.71	2514	-0.021	-0.058	0.058	0.094	139.601682	51.402076	1853.00	914.47
5	GUIDE	449709968	6.97	2514	-0.308	0.012	0.079	0.138	140.122718	52.450980	-1974.48	1889.84
6	GUIDE	449712984	8.71	2514	0.070	0.176	0.159	0.223	139.803051	51.633381	999.05	1328.07
7	GUIDE	498865336	9.18	2511	0.018	0.050	0.136	0.212	139.050858	52.564533	-2279.25	-474.65

2.4 Star Slots

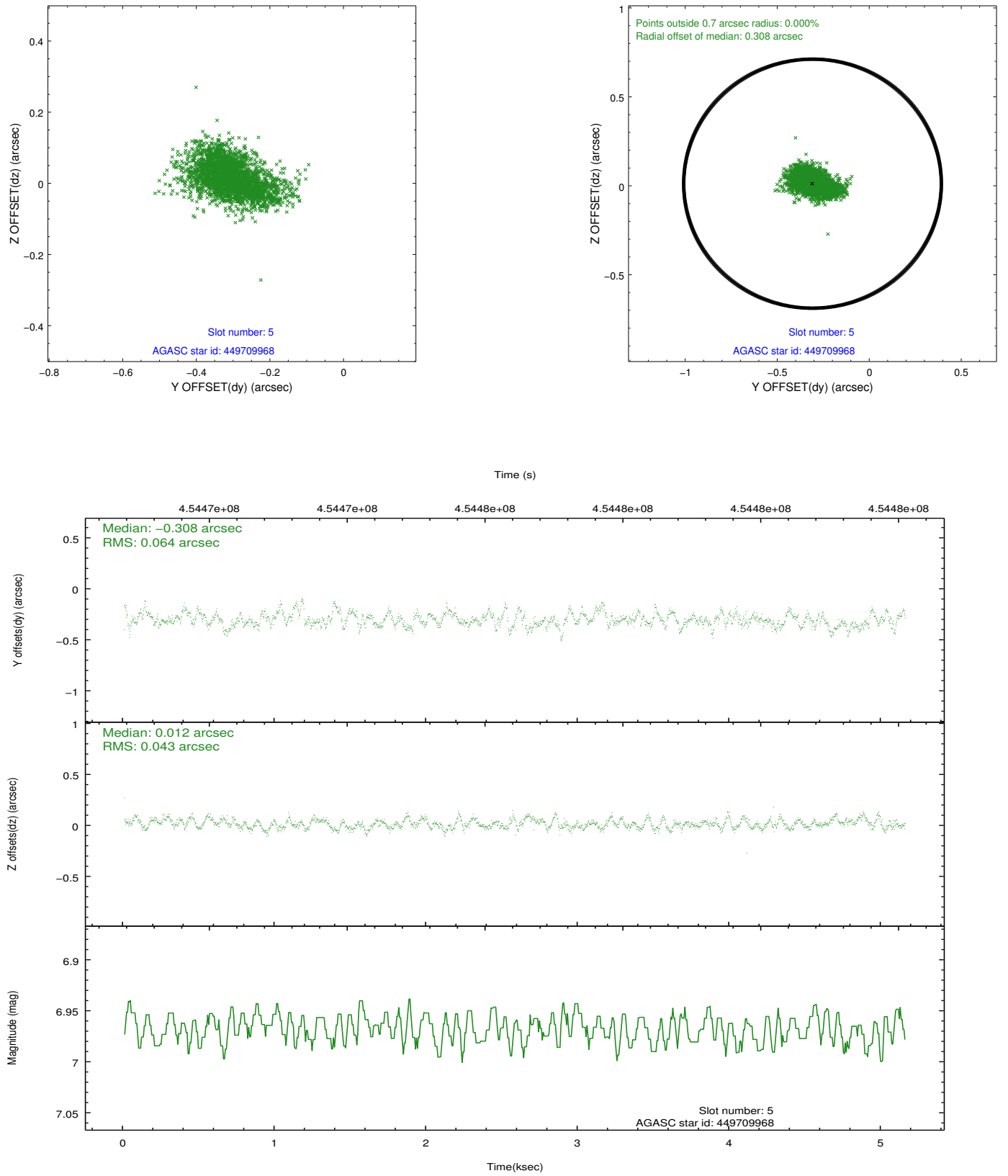
2.4.1 Slot 3



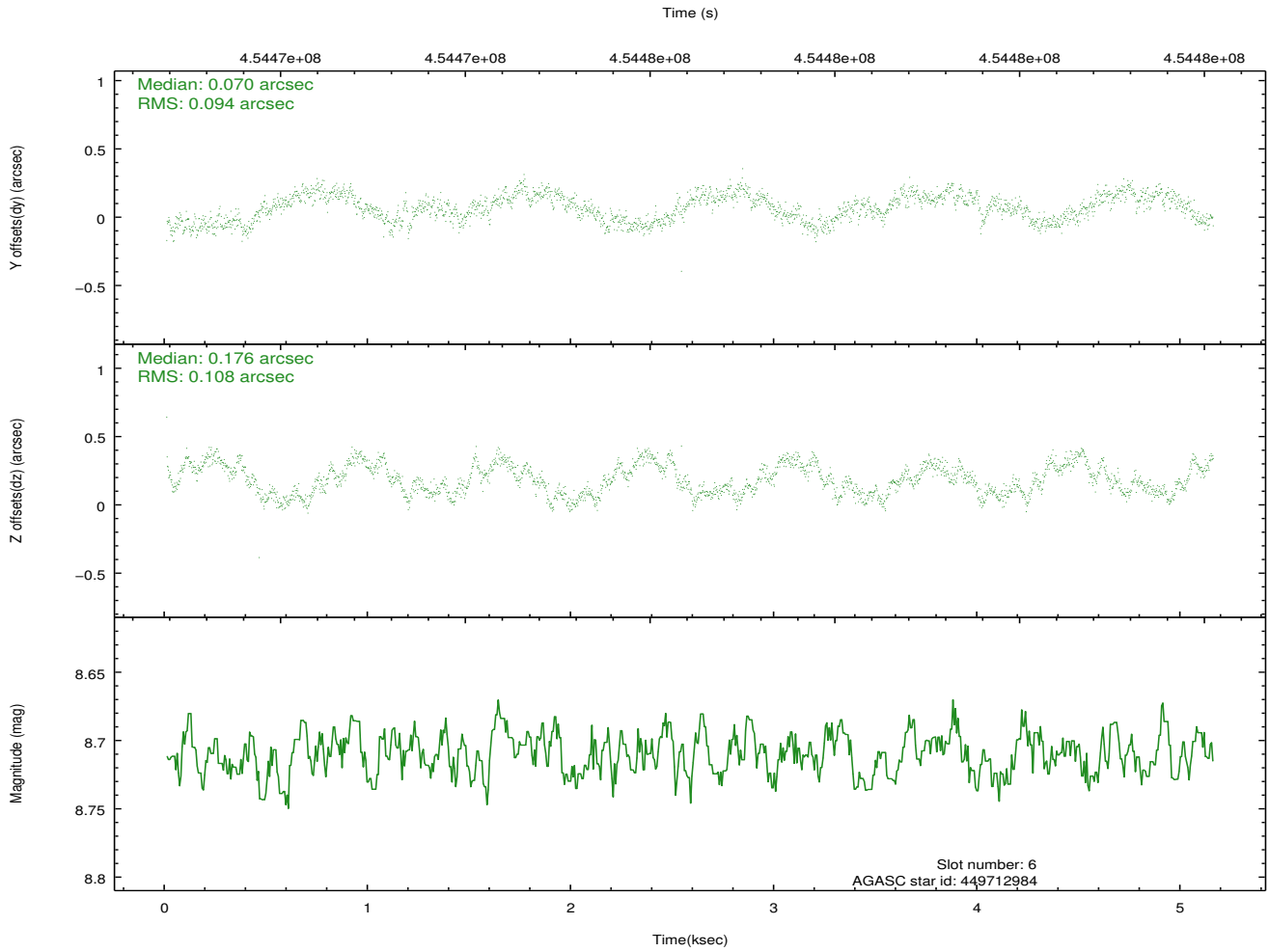
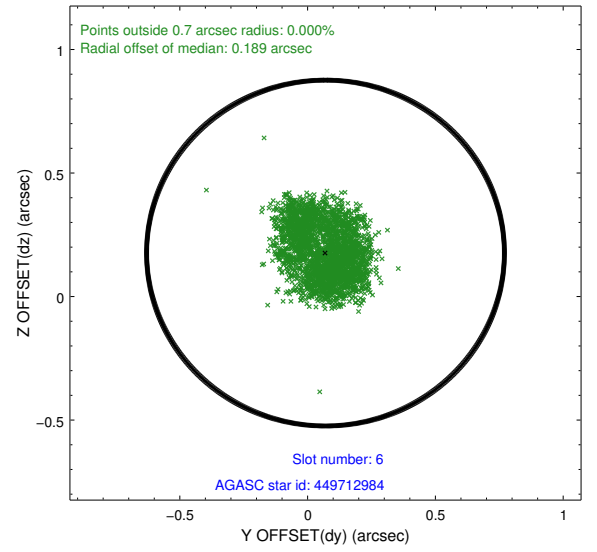
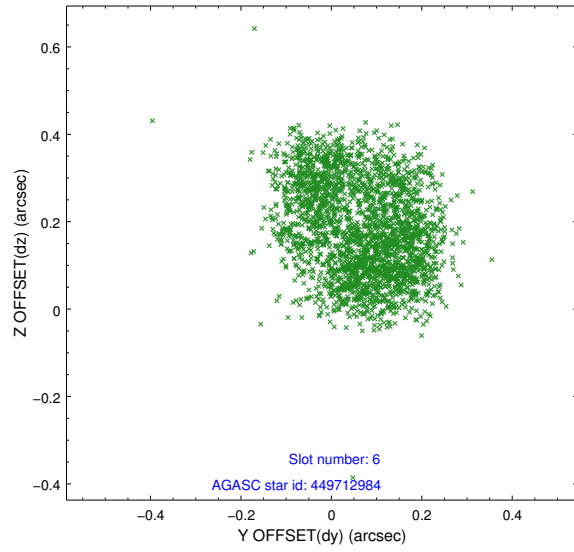
2.4.2 Slot 4



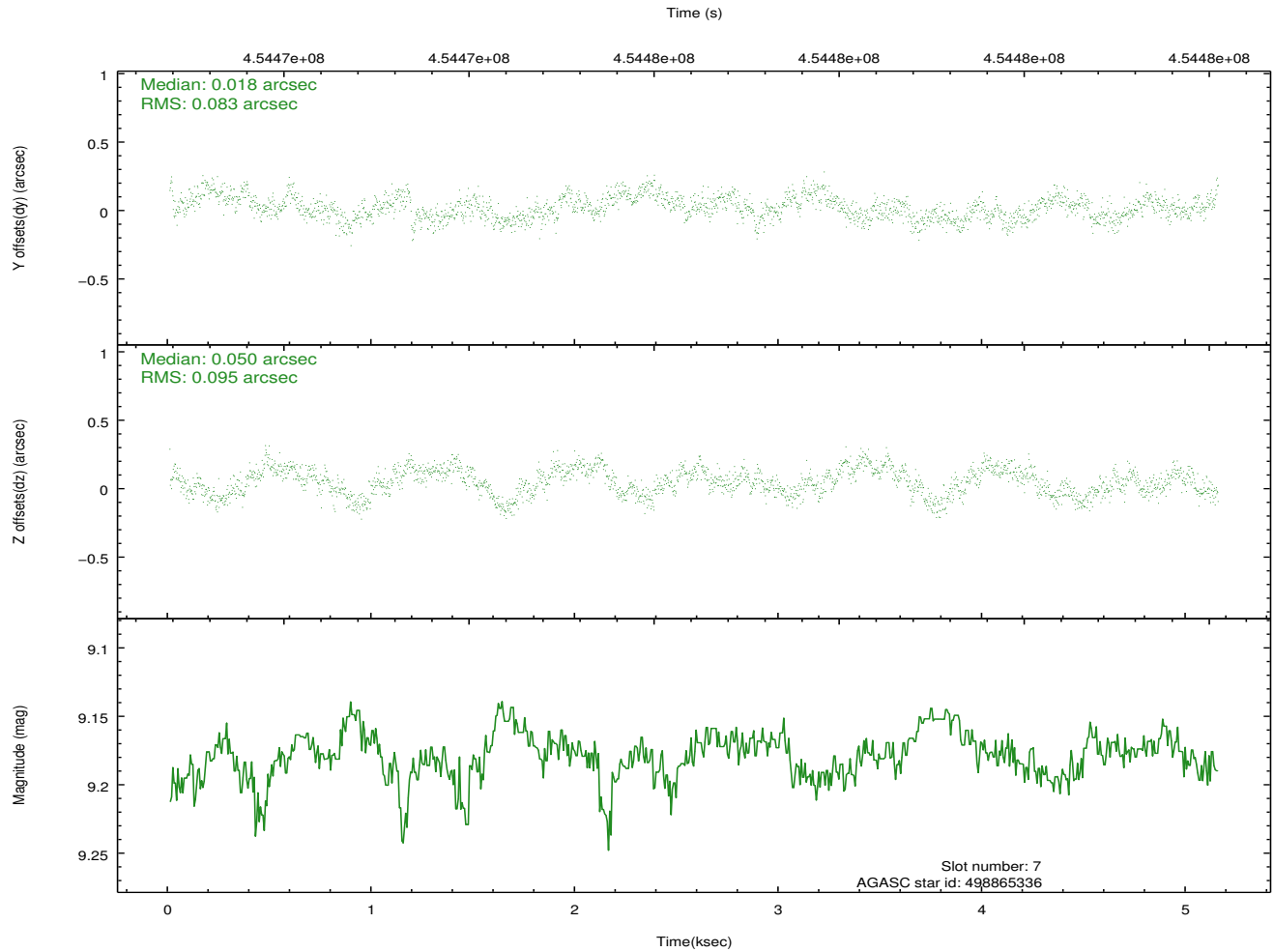
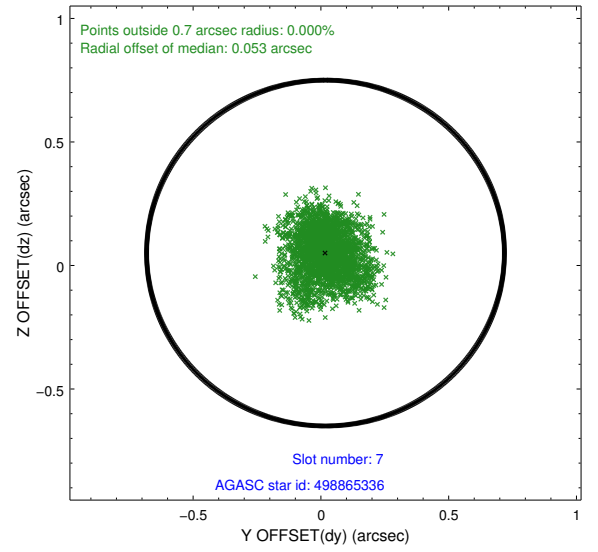
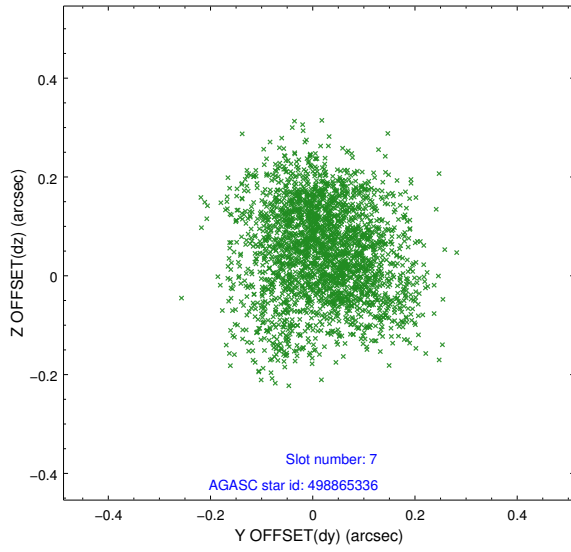
2.4.3 Slot 5



2.4.4 Slot 6

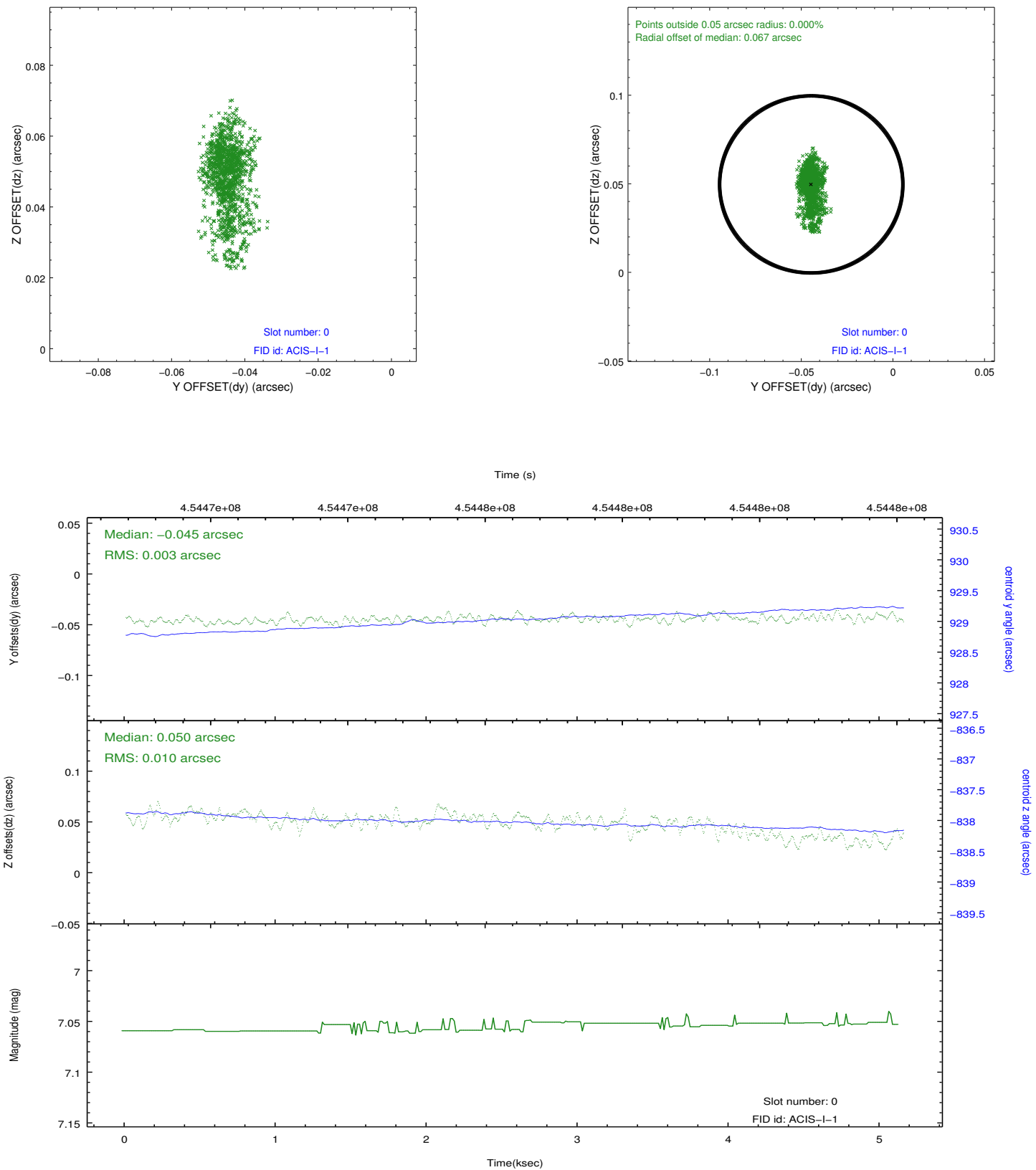


2.4.5 Slot 7

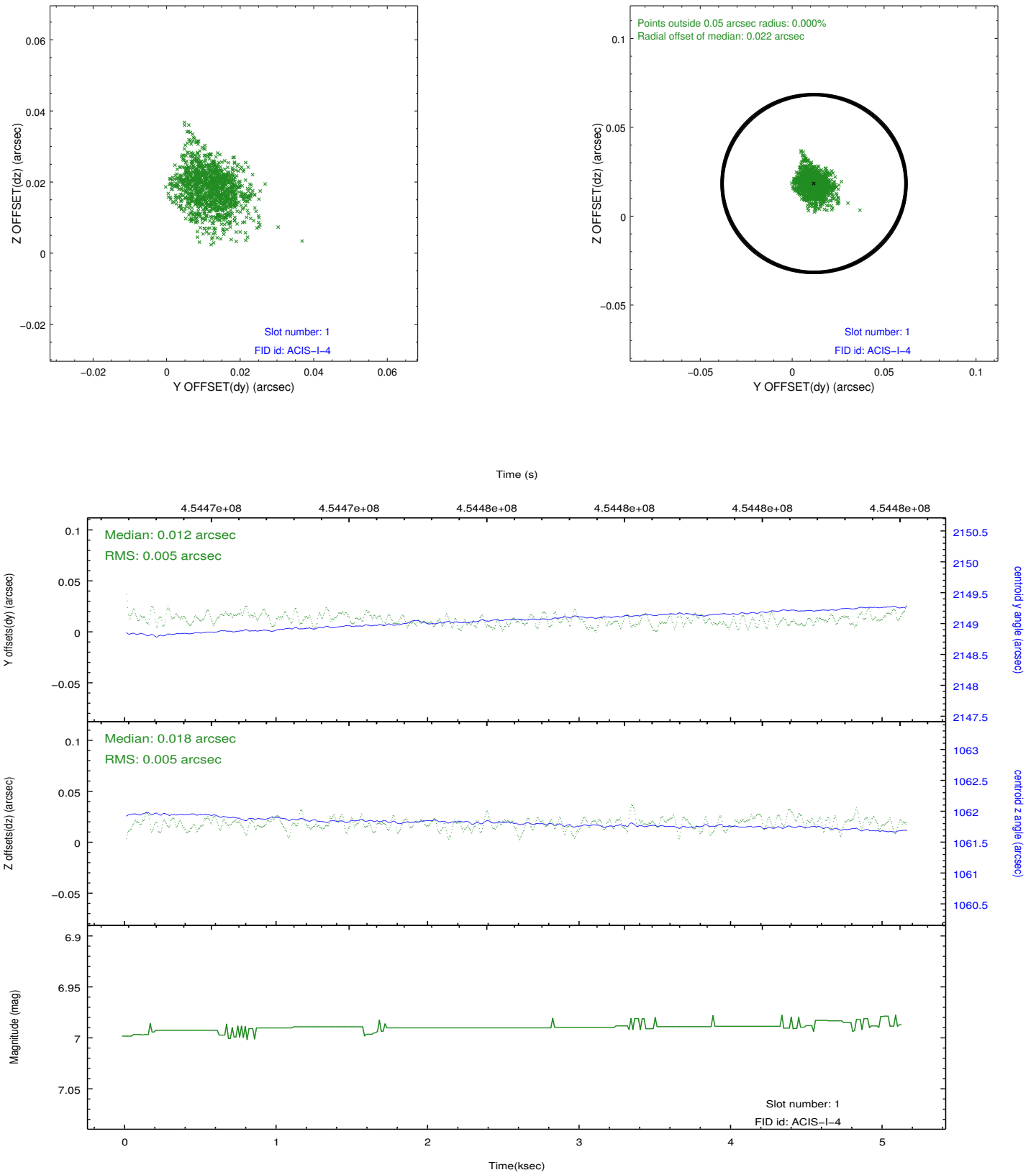


2.5 FID Slots

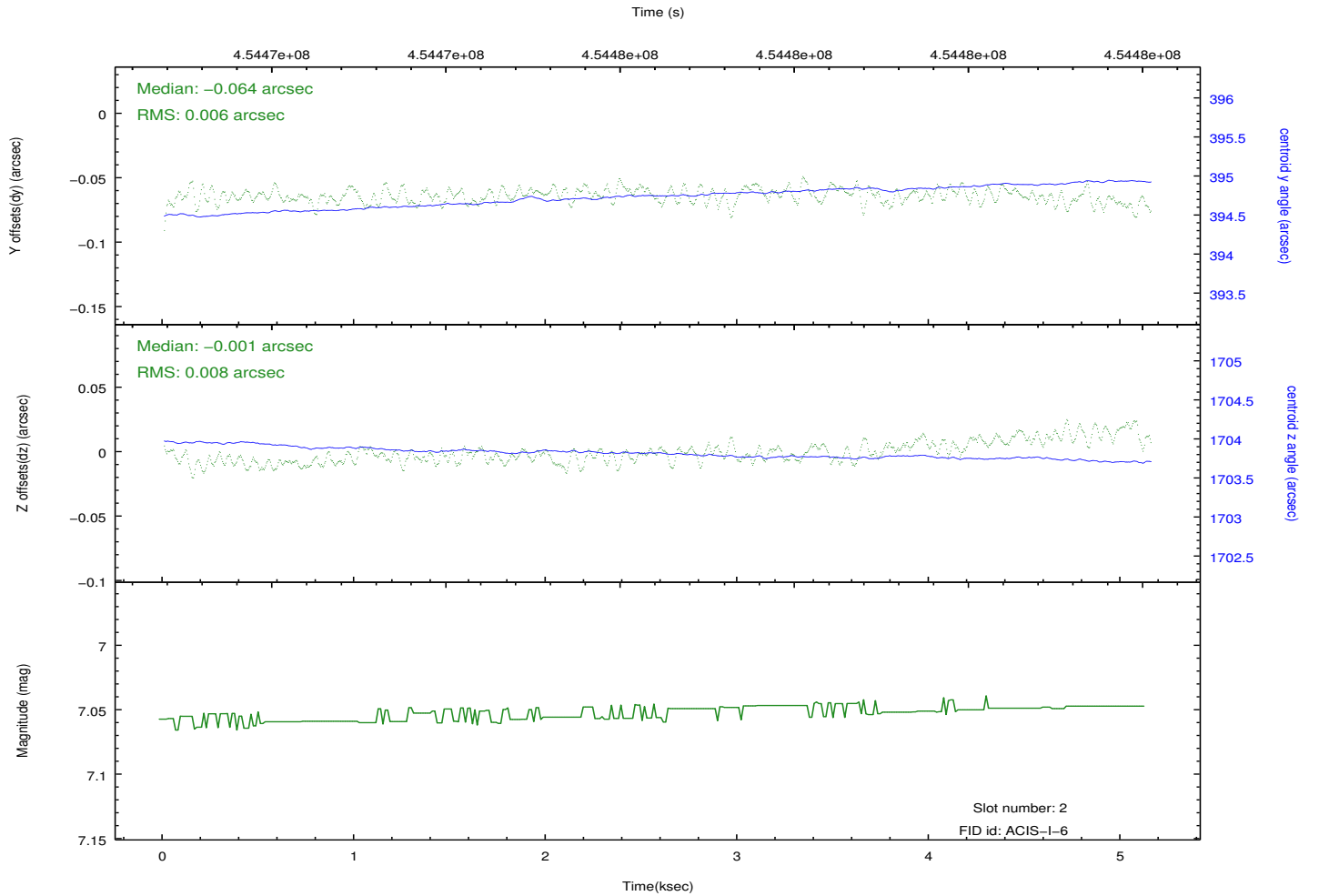
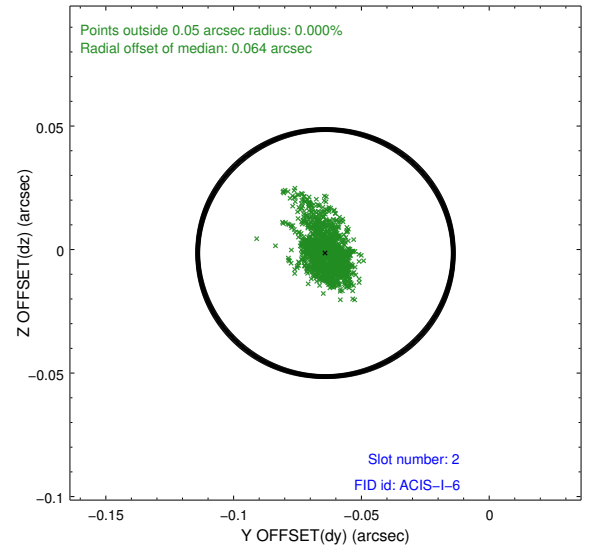
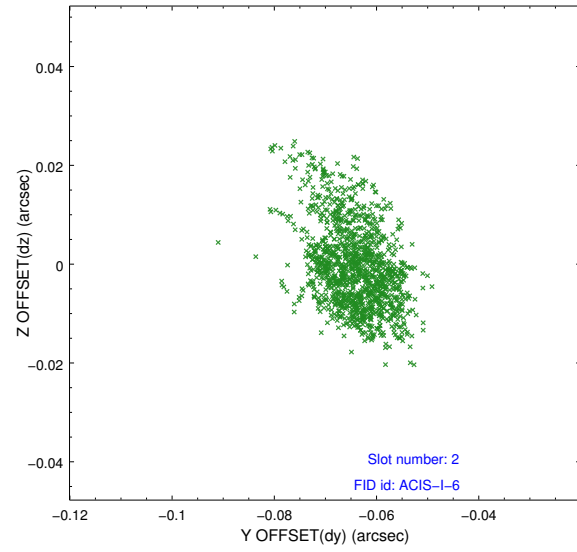
2.5.1 Slot 0



2.5.2 Slot 1



2.5.3 Slot 2



A Summary

A.1 Status

V&V Scientist	Beth Sundheim
V&V Date (YYYY-MM-DD)	2012.05.27
V&V Edition	1
V&V Disposition and Status	OK
V&V Charge Time	5.0777590787411

A.2 Comments