

V&V Reference Report

L2 ASCDS Version : 8.4.3

Observation 13387 - L2 Version 1
Chandra X-Ray Center

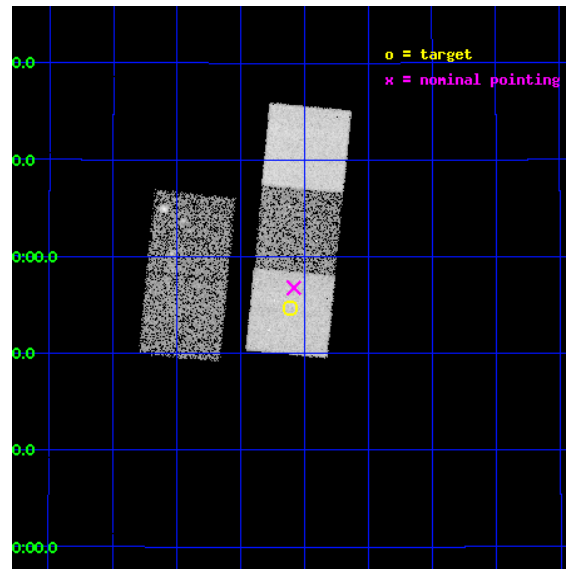
L2 Processing Date : Jan 3 2012

Contents

1	Front	2
2	OBI	3
2.1	OBI	3
2.1.1	Images	3
2.1.2	Bias	3
2.1.3	Parameters	4
2.1.4	Events	4
2.2	Compared Parameters	5
2.3	Aspect	6
2.4	Star Slots	9
2.4.1	Slot 3	9
2.4.2	Slot 4	10
2.4.3	Slot 5	11
2.4.4	Slot 6	12
2.4.5	Slot 7	13
2.5	FID Slots	14
2.5.1	Slot 0	14
2.5.2	Slot 1	15
2.5.3	Slot 2	16
A	Summary	17
A.1	Status	17
A.2	Comments	17

1 Front

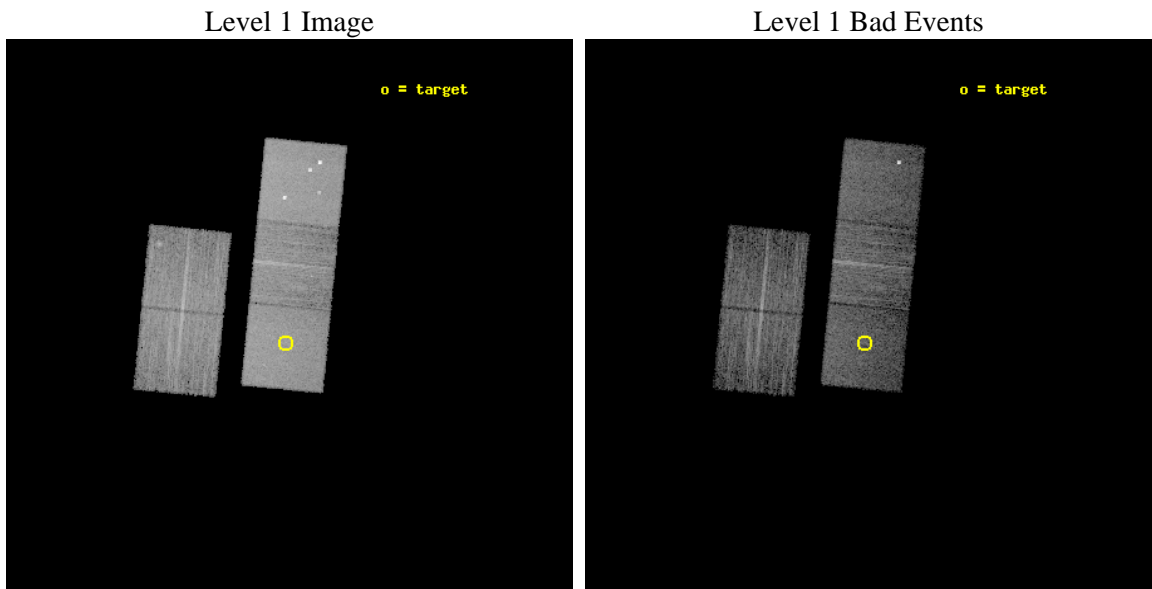
seq_num	801074	Sequence number
obs_id	13387	Observation id
title	Assembling a Large Sample of Fossil Groups	Proposal title
observer	Prof. Gordon Garmire	Principal investigator
object	SDSS J0828+2654	Source name
dtcycle	0	
cycle	P	events from which exps? Prim/Second/Both
ra_targ	127.0275	Observer's specified target RA [deg]
dec_targ	26.911833	Observer's specified target Dec [deg]
ra_nom	127.0209189169	Nominal RA [deg]
dec_nom	26.946360871616	Nominal Dec [deg]
roll_nom	95.629403527753	Nominal Roll [deg]
revision	1	Processing version of data
ontime	10044.000077248	Sum of GTIs [s]
livetime	9912.7678219531	Livetime [s]
ontime2	10043.97350508	Sum of GTIs [s]
ontime3	10044.000077248	Sum of GTIs [s]
ontime5	10044.000077248	Sum of GTIs [s]
ontime6	10044.000077248	Sum of GTIs [s]
ontime7	10044.000077248	Sum of GTIs [s]
l2events	98668	Number of level 2 events



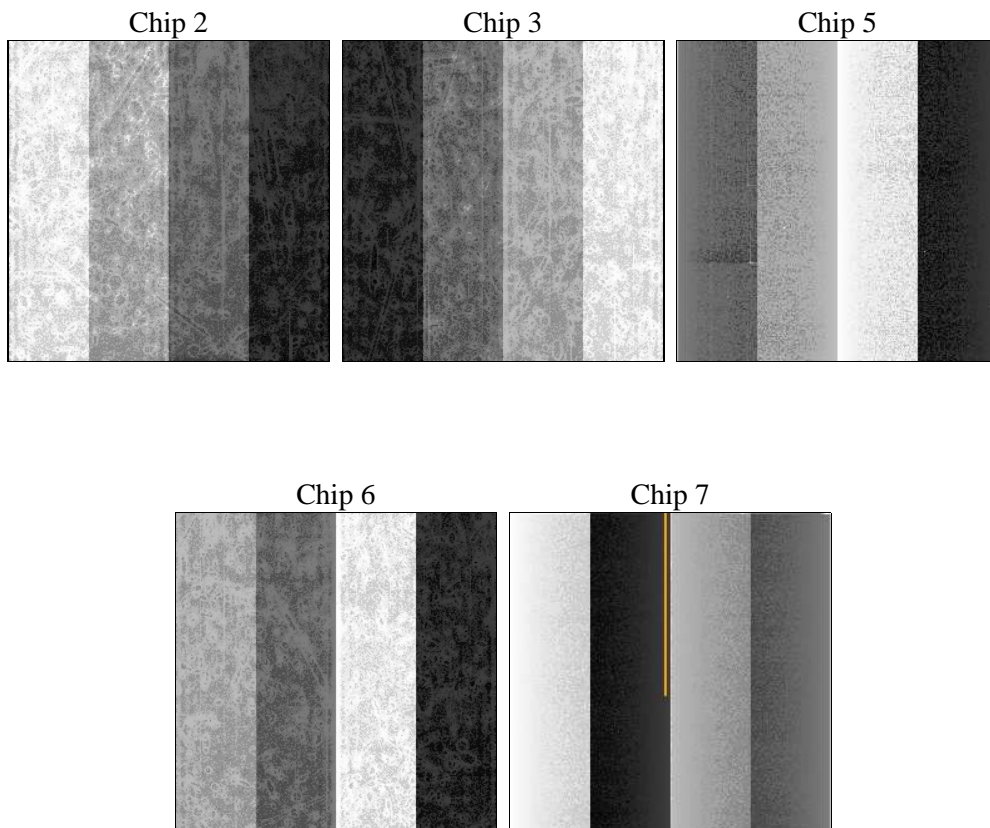
2 OBI

2.1 OBI

2.1.1 Images



2.1.2 Bias



2.1.3 Parameters

obi_num	0	Obi number	sched_exp_time	10000.000000	[s] Scheduled observation exposure time
ascdsver	8.4.3	Processing system revision	ontime	10044.000077248	Sum of GTIs [s]
caldsver	4.4.7	 	ontime2	10043.97350508	Sum of GTIs [s]
date	2012-01-04T01:46:13	Date and time of file creation	ontime3	10044.000077248	Sum of GTIs [s]
revision	1	Processing version of data	ontime5	10044.000077248	Sum of GTIs [s]
			ontime6	10044.000077248	Sum of GTIs [s]
			ontime7	10044.000077248	Sum of GTIs [s]
			l1events	368684	Number of level 1 events

2.1.4 Events

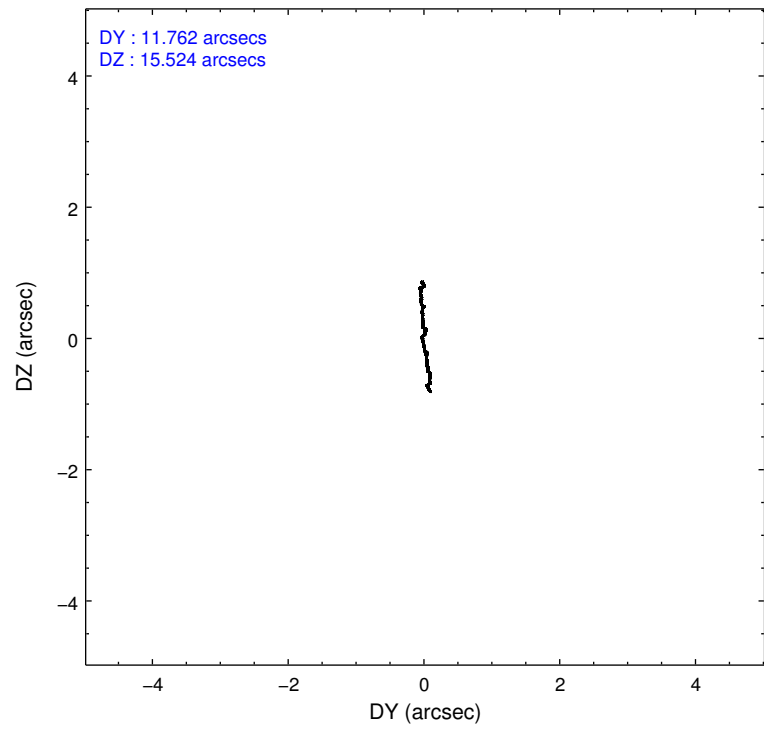
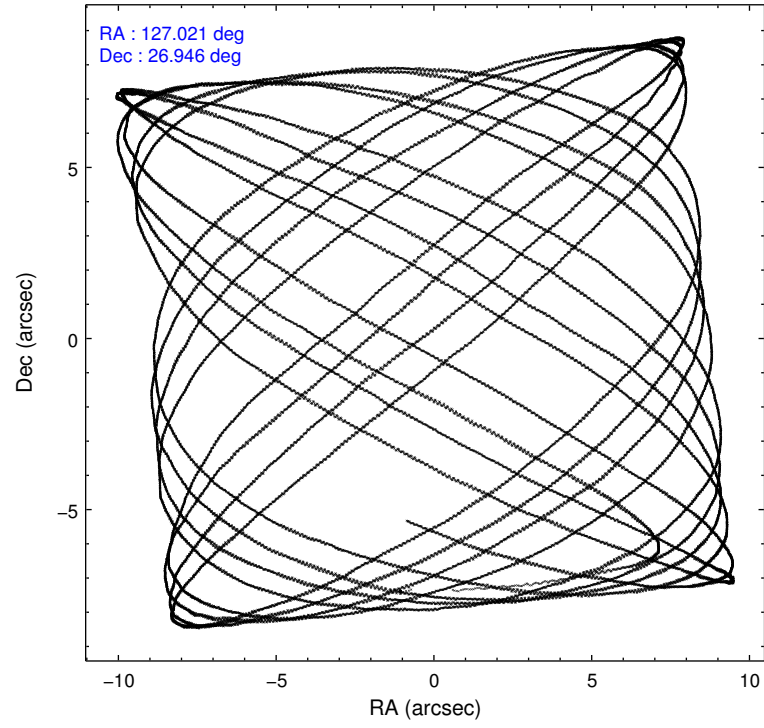
	ccd 2	ccd 3	ccd 5	ccd 6	ccd 7
level 1 events	60771	59255	105380	63314	79964
rejected events	53387	52705	52559	55970	43948
rejected %	87%	88%	49%	88%	54%

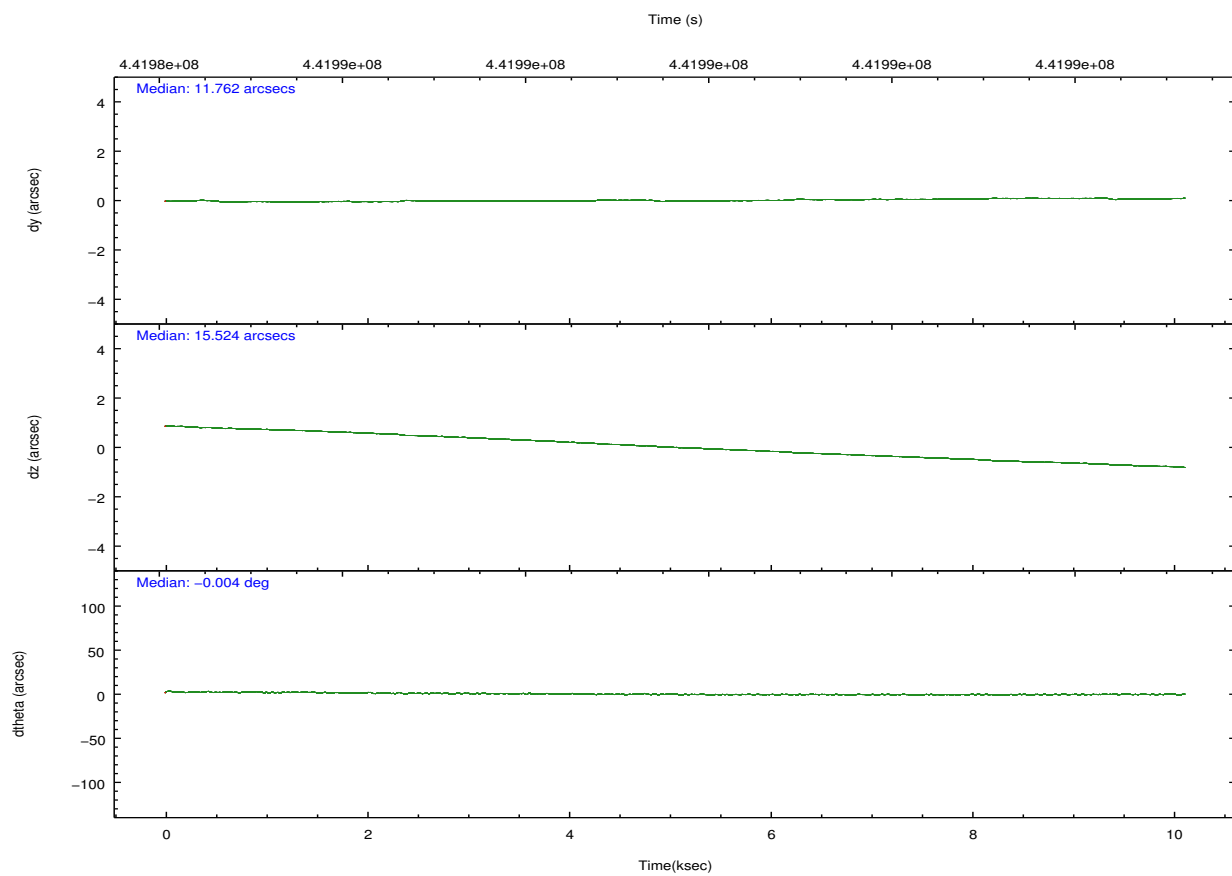
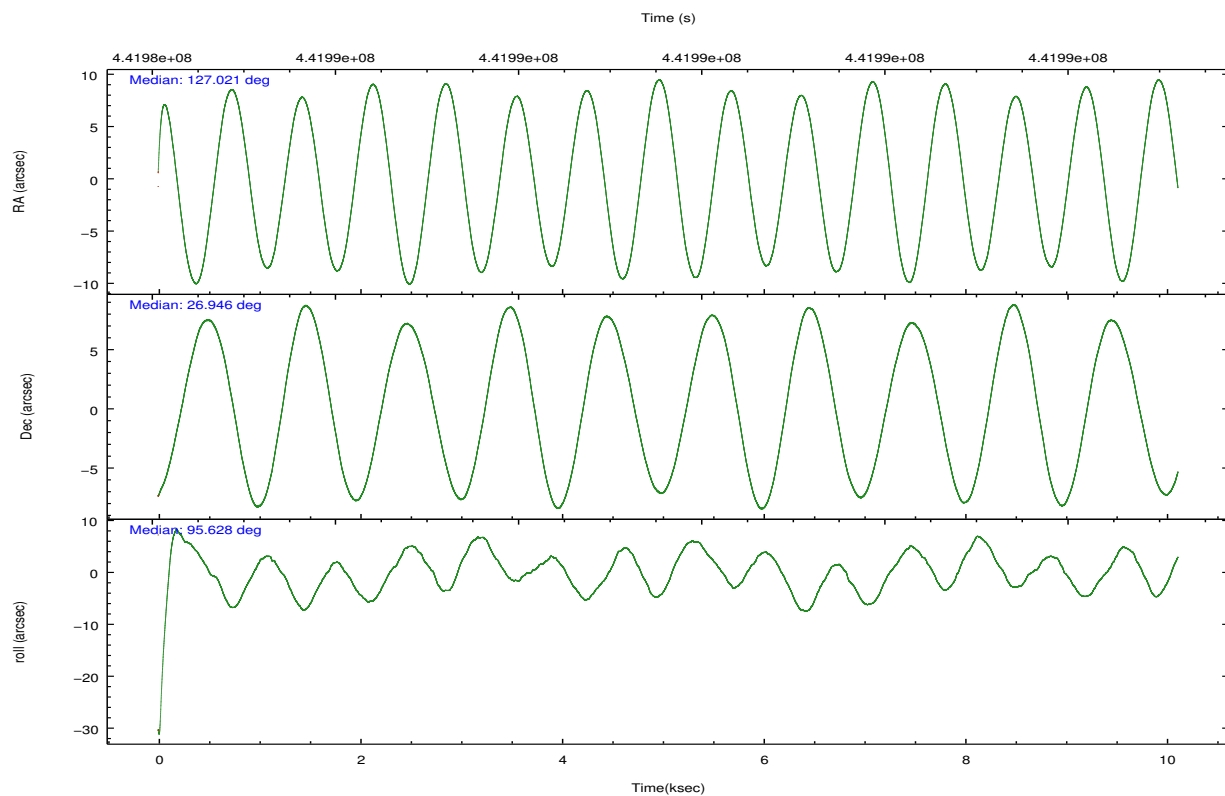
	ccd 2	ccd 3	ccd 5	ccd 6	ccd 7
grade 0 events	2842	2260	8234	2528	3389
	4%	3%	7%	3%	4%
grade 1 events	36	43	153	29	92
	0%	0%	0%	0%	0%
grade 2 events	1660	1456	15575	1659	7482
	2%	2%	14%	2%	9%
grade 3 events	740	723	1737	762	3157
	1%	1%	1%	1%	3%
grade 4 events	779	712	1746	756	3116
	1%	1%	1%	1%	3%
grade 5 events	2569	2865	7680	3054	8300
	4%	4%	7%	4%	10%
grade 6 events	1367	1402	25550	1647	18888
	2%	2%	24%	2%	23%
grade 7 events	50778	49794	44705	52879	35540
	83%	84%	42%	83%	44%

2.2 Compared Parameters

Parameter	Planned	Actual	Parameter	Planned	Actual
Instrument	ACIS	ACIS	Obspar format version number	7	7
Detector	ACIS-23567	ACIS-23567	Obspar file type	PREDICTED	ACTUAL
Grating	NONE	NONE	Obspar update status	NONE	UPDATED
Data mode	VFAINT	VFAINT	CCD I0 on	N	N
Observation mode	POINTING	POINTING	CCD I1 on	N	N
[deg] Pointing RA	127.039102	127.0209189168954	CCD I2 on	O1	Y
[deg] Pointing Dec	26.924373	26.94636087161597	CCD I3 on	O2	Y
[deg] Pointing Roll	95.464584	95.62940352775252	CCD S0 on	N	N
[mm] SIM focus pos	-0.684267	-0.6828225247311905	CCD S1 on	Y	Y
[mm] SIM defocus	0	0.001444936568705701	CCD S2 on	Y	Y
[mm] SIM translation stage pos	-190.132523	-190.1400660498719	CCD S3 on	Y	Y
[mm] SIM translation stage offset	0	0.00754346686406393	CCD S4 on	N	N
[s] Observation start time (MET)	441984680.184000	441983382.09496	CCD S5 on	N	N
Observation start date	2012-01-03T13:30:14	2012-01-03T13:09:42	Number of optional ACIS chips dropped	0	0
[s] Observation end time (MET)	441994680.184000	441995416.62059	On-chip summing requested	N	N
Observation end date	2012-01-03T16:16:54	2012-01-03T16:30:16	Subarray requested	NONE	NONE
Read mode	TIMED	TIMED	Alternating exposures requested	N	N
			[s] Primary exposure time	0.000000	3.1

2.3 Aspect



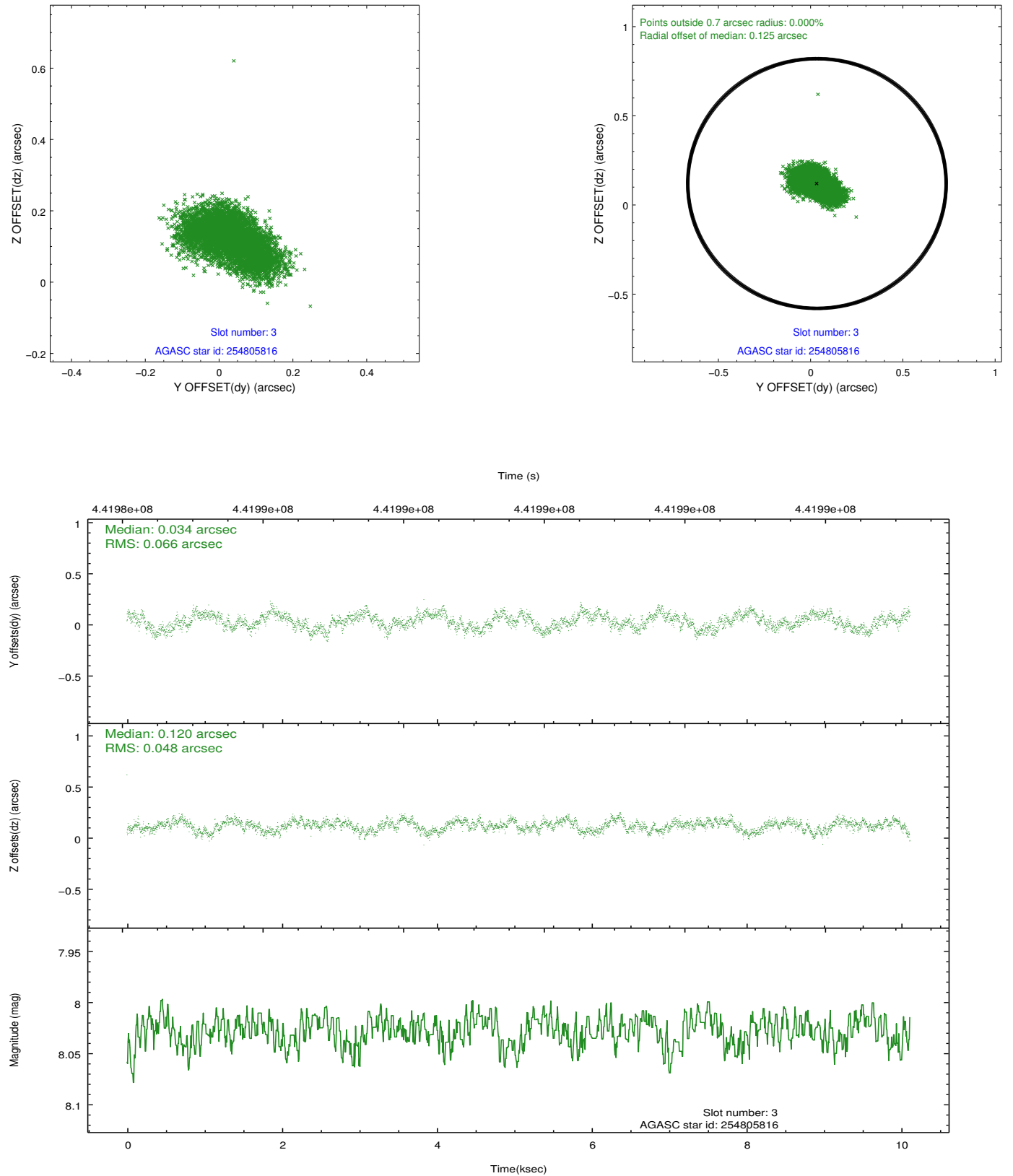


Slot Statistics

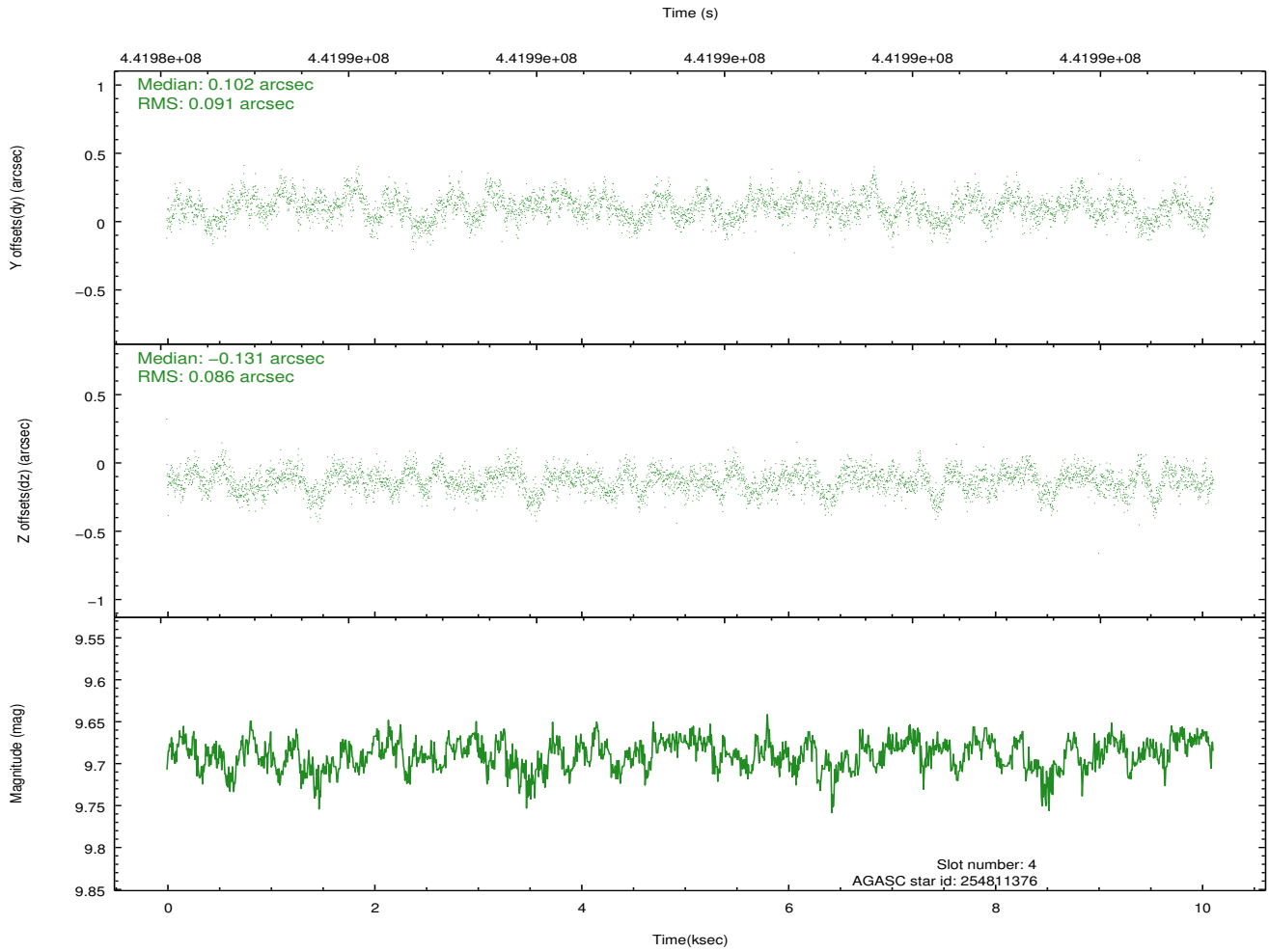
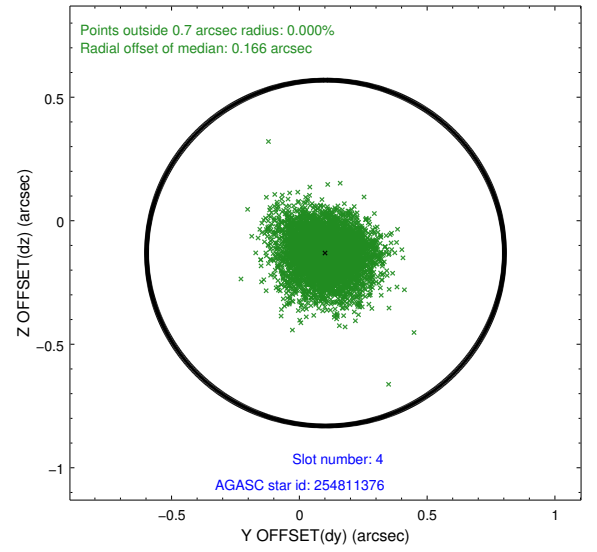
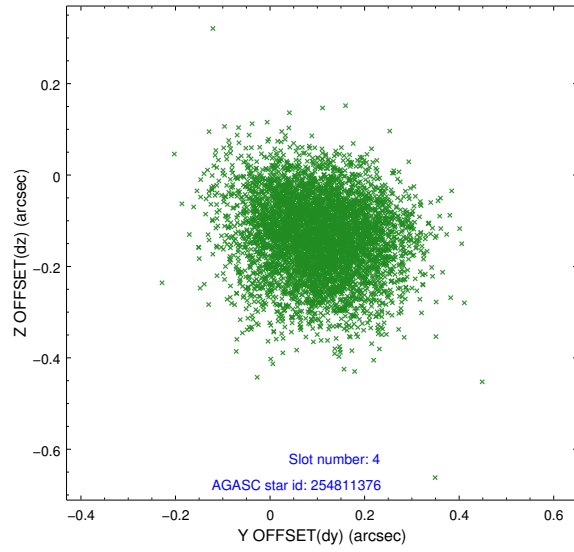
slot	status	id	mag	n_pts	med_dy	med_dz	dr1	dr2	ra	dec	mean_y	mean_z
0	FID	ACIS-S-2	6.90	2468	-0.054	-0.003	0.009	0.014	0.000000	0.000000	-764.70	-1736.95
1	FID	ACIS-S-4	6.98	2468	0.161	0.027	0.007	0.011	0.000000	0.000000	2148.54	171.03
2	FID	ACIS-S-5	7.02	2467	-0.139	-0.015	0.007	0.012	0.000000	0.000000	-1816.97	165.24
3	GUIDE	254805816	8.03	4935	0.034	0.120	0.088	0.140	126.563956	26.511747	-1330.16	1665.11
4	GUIDE	254811376	9.69	4929	0.102	-0.131	0.132	0.215	126.405655	26.304821	-2020.93	2247.45
5	GUIDE	254819112	10.01	4908	-0.040	-0.031	0.160	0.252	126.367725	27.492091	2243.73	1940.04
6	GUIDE	254821296	9.51	4925	-0.114	0.072	0.157	0.252	126.432453	27.087260	773.73	1880.01
7	GUIDE	255205784	10.16	4926	0.017	-0.040	0.212	0.339	126.550800	27.550930	2396.67	1337.22

2.4 Star Slots

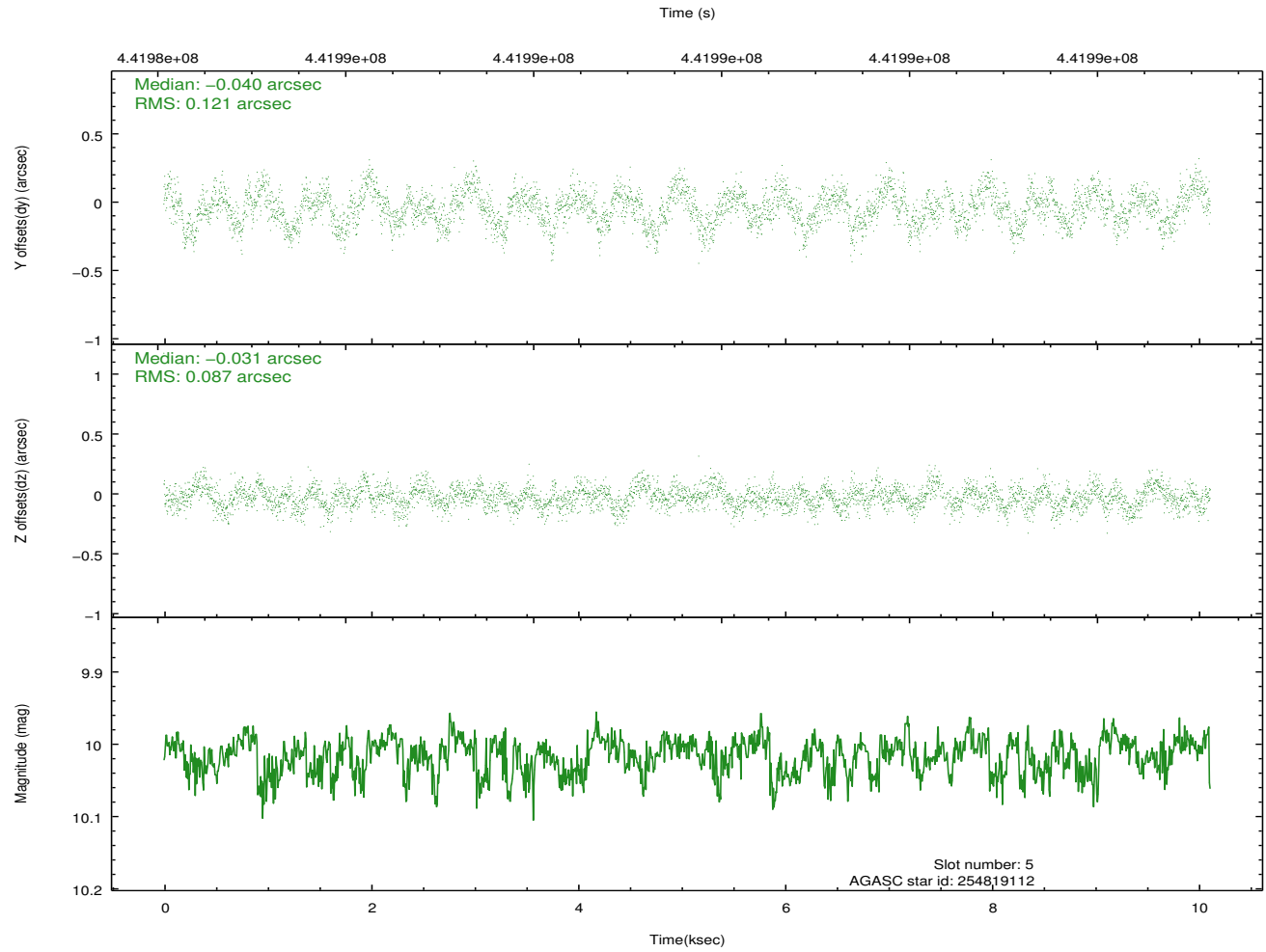
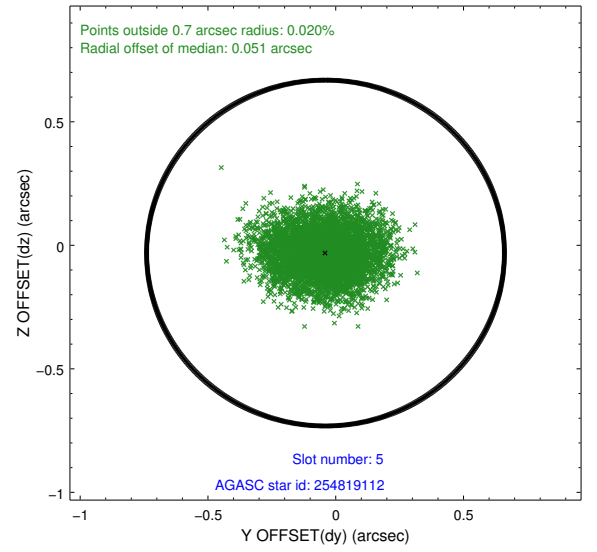
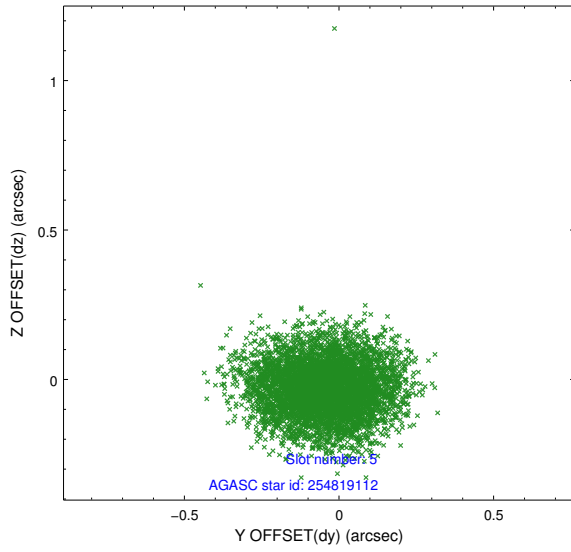
2.4.1 Slot 3



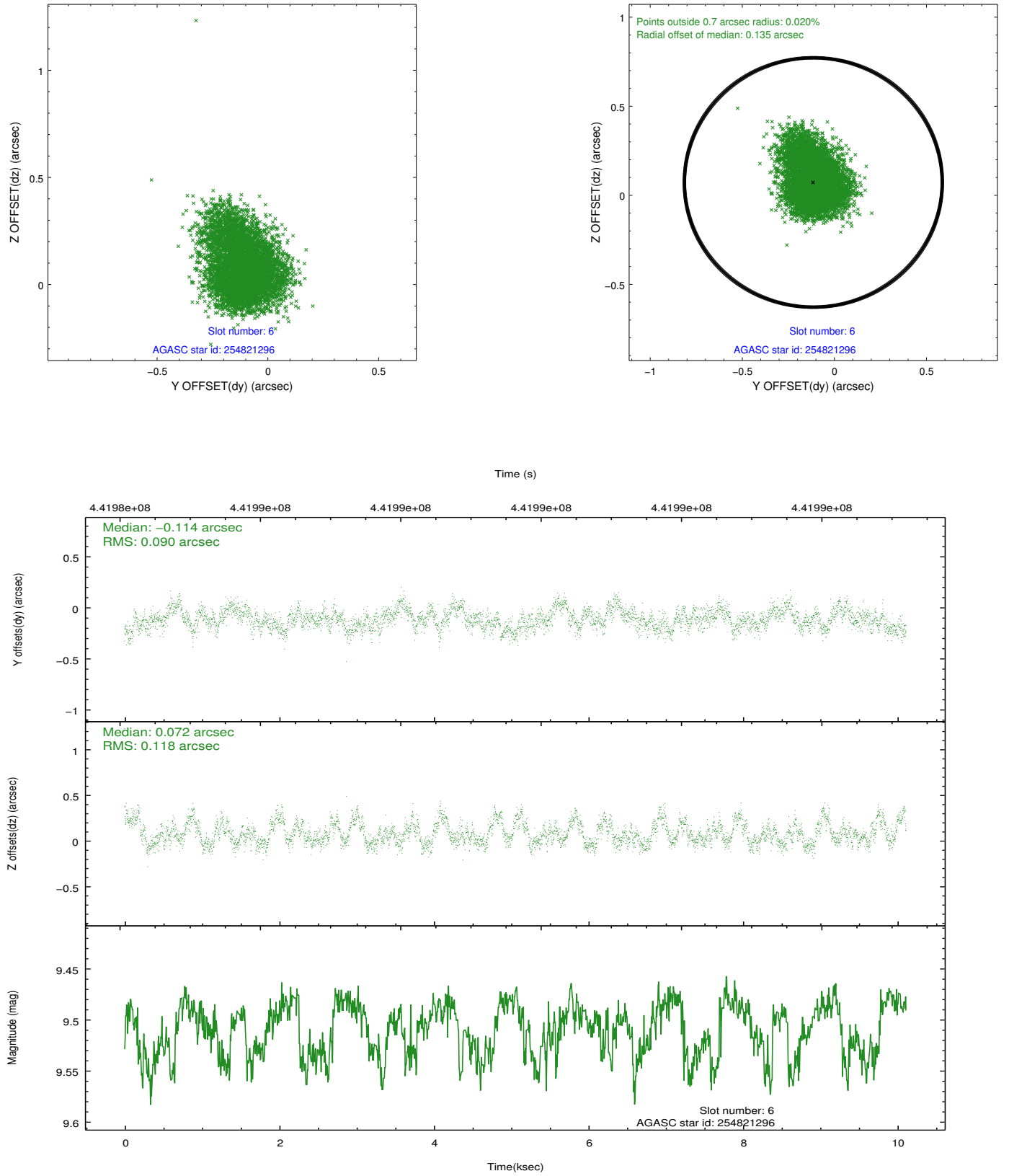
2.4.2 Slot 4



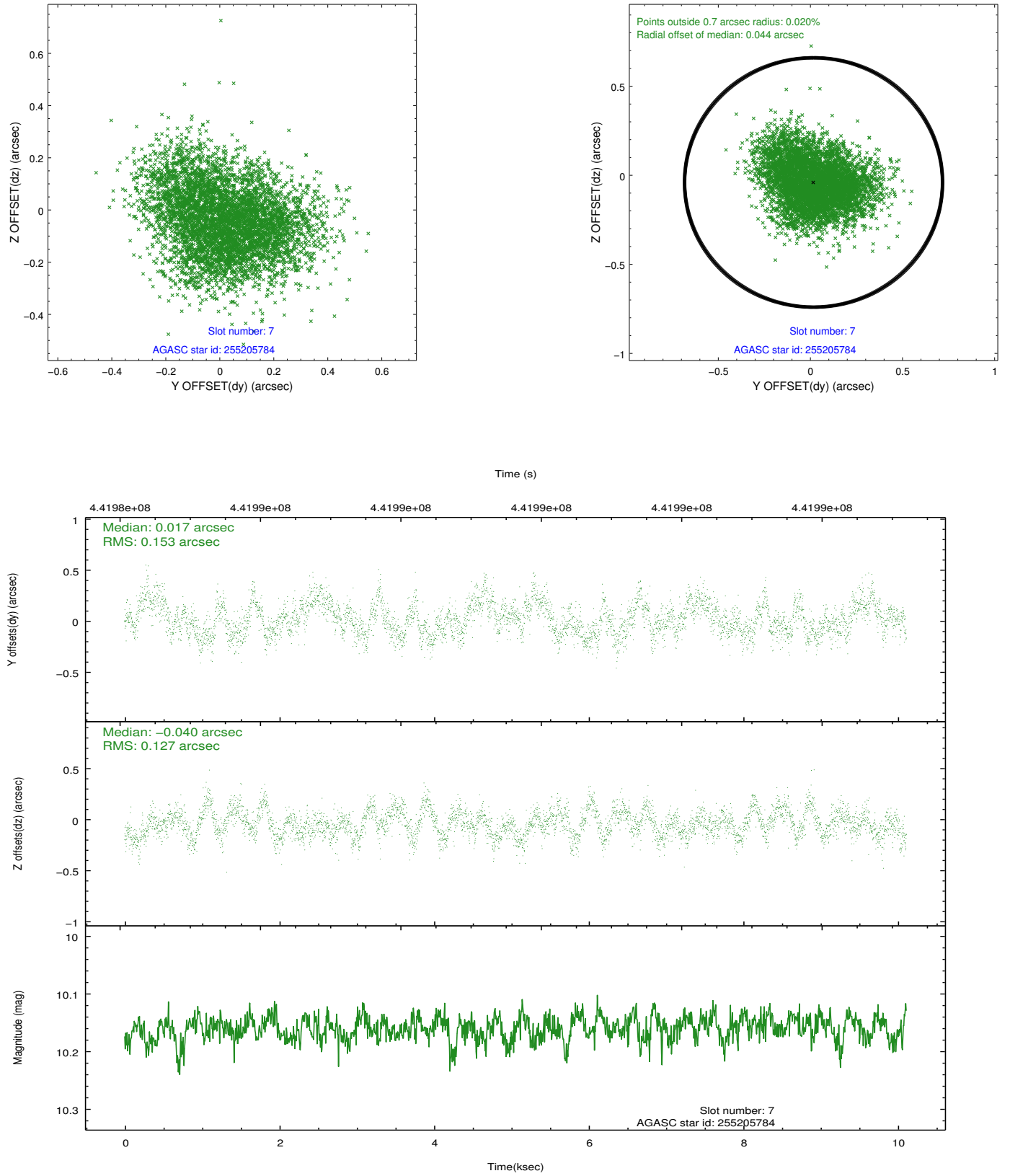
2.4.3 Slot 5



2.4.4 Slot 6

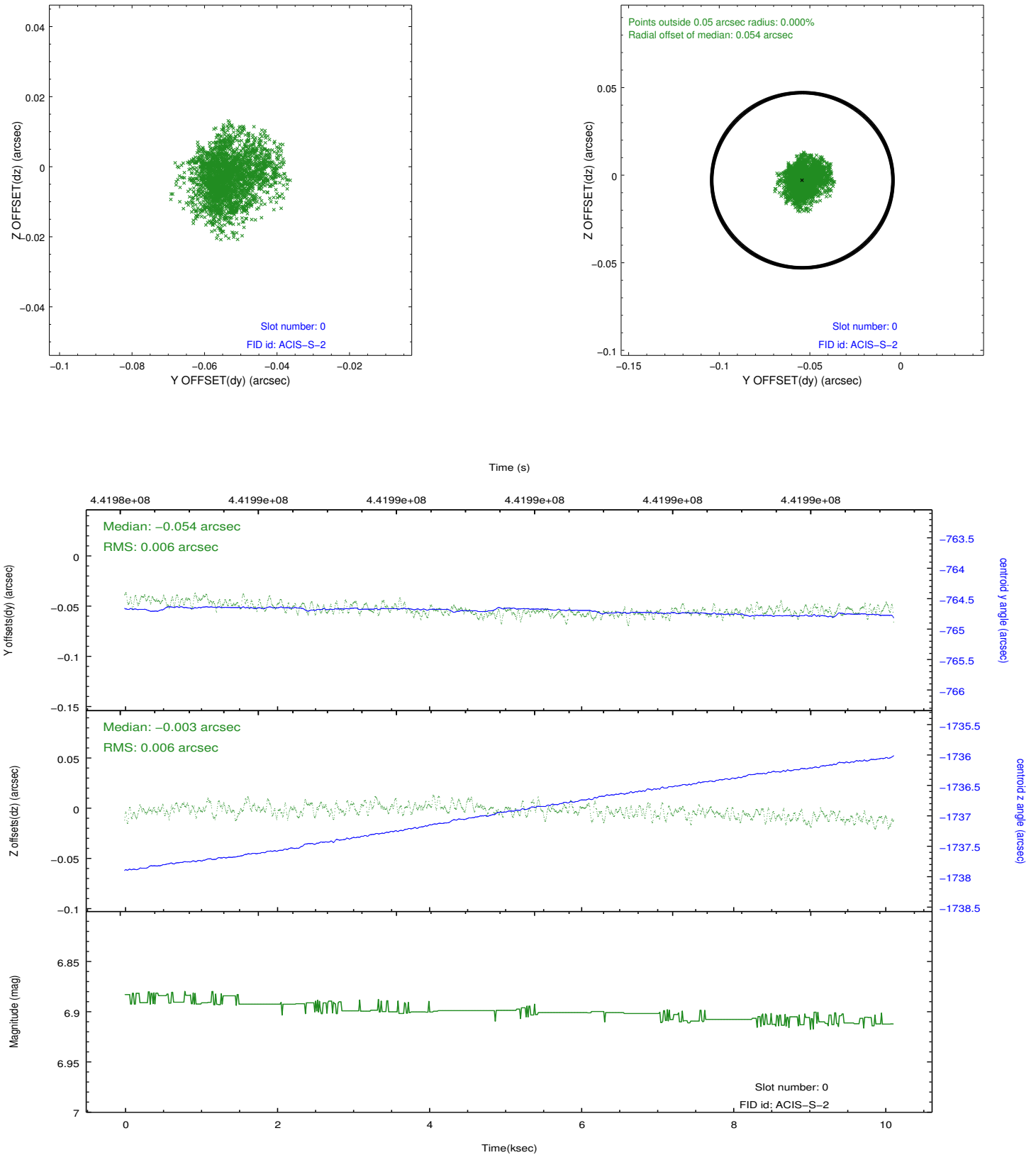


2.4.5 Slot 7

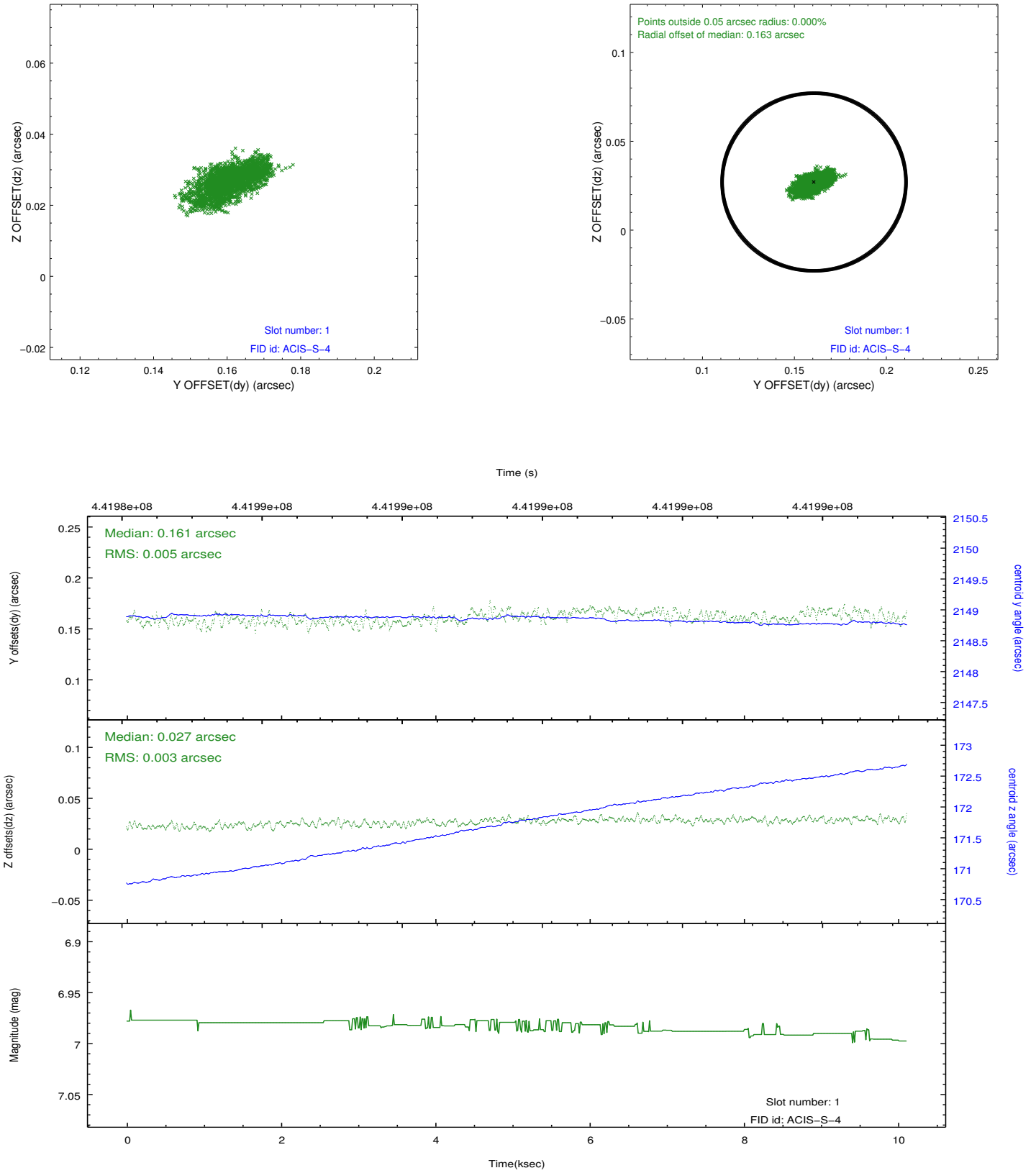


2.5 FID Slots

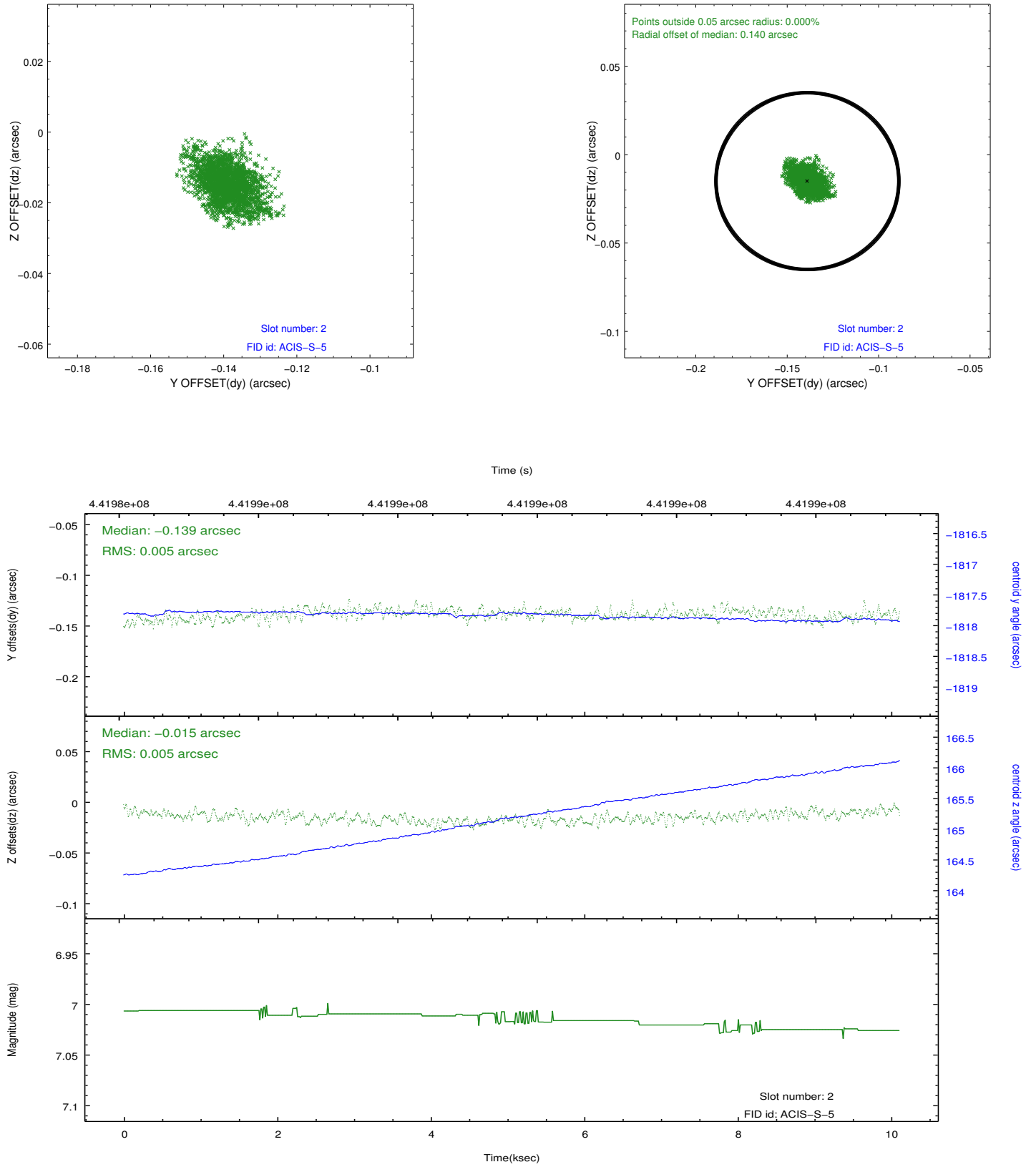
2.5.1 Slot 0



2.5.2 Slot 1



2.5.3 Slot 2



A Summary

A.1 Status

V&V Scientist	Joy Nichols
V&V Date (YYYY-MM-DD)	2012.01.04
V&V Edition	1
V&V Disposition and Status	OK
V&V Charge Time	10.044000077248

A.2 Comments