

V&V Reference Report

L2 ASCDS Version : 8.4.3

Observation 13375 - L2 Version 1
Chandra X-Ray Center

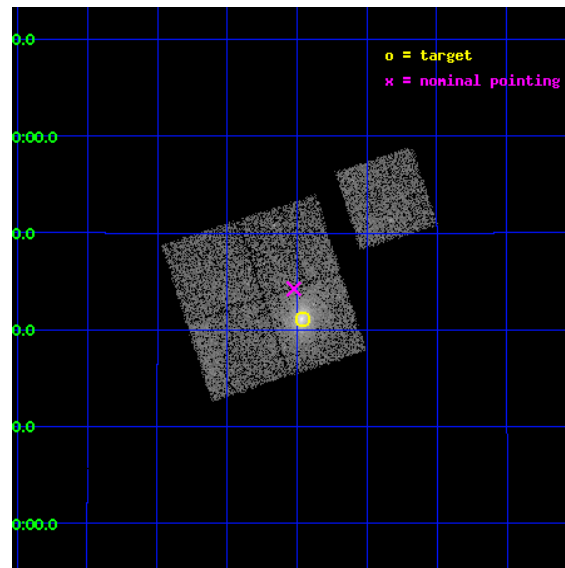
L2 Processing Date : Jan 15 2012

Contents

1	Front	2
2	OBI	3
2.1	OBI	3
2.1.1	Images	3
2.1.2	Bias	3
2.1.3	Parameters	4
2.1.4	Events	4
2.2	Compared Parameters	5
2.3	Aspect	6
2.4	Star Slots	9
2.4.1	Slot 3	9
2.4.2	Slot 4	10
2.4.3	Slot 5	11
2.4.4	Slot 6	12
2.4.5	Slot 7	13
2.5	FID Slots	14
2.5.1	Slot 0	14
2.5.2	Slot 1	15
2.5.3	Slot 2	16
A	Summary	17
A.1	Status	17
A.2	Comments	17

1 Front

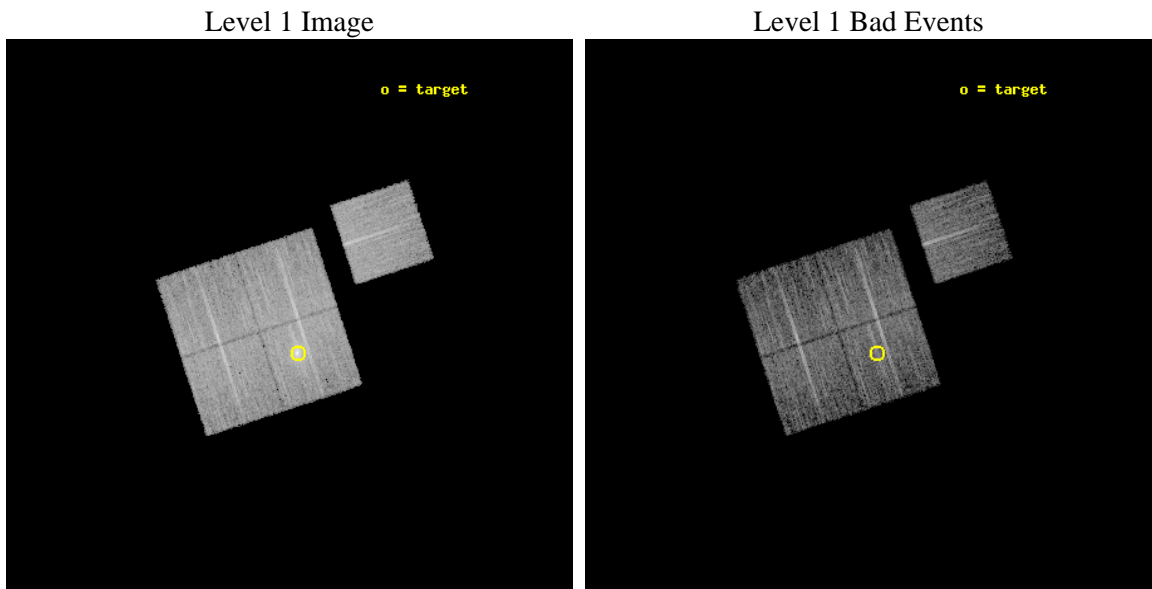
seq_num	801062	Sequence number
obs_id	13375	Observation id
title	Characterizing the Most Massive Clusters in the Local Universe	Pro
observer	Dr Stephen Murray	Principal investigator
object	G228.49+53.12	Source name
dtcycle	0	
cycle	P	events from which exps? Prim/Second/Both
ra_targ	156.4907	Observer's specified target RA [deg]
dec_targ	12.6849	Observer's specified target Dec [deg]
ra_nom	156.50579294184	Nominal RA [deg]
dec_nom	12.737317394335	Nominal Dec [deg]
roll_nom	71.930992107285	Nominal Roll [deg]
revision	1	Processing version of data
ontime	9053.9769406319	Sum of GTIs [s]
livetime	8935.6800664617	Livetime [s]
ontime0	9053.853820622	Sum of GTIs [s]
ontime1	9053.8948606253	Sum of GTIs [s]
ontime2	9053.9359006286	Sum of GTIs [s]
ontime3	9053.9769406319	Sum of GTIs [s]
ontime6	9053.8127806187	Sum of GTIs [s]
l2events	38132	Number of level 2 events



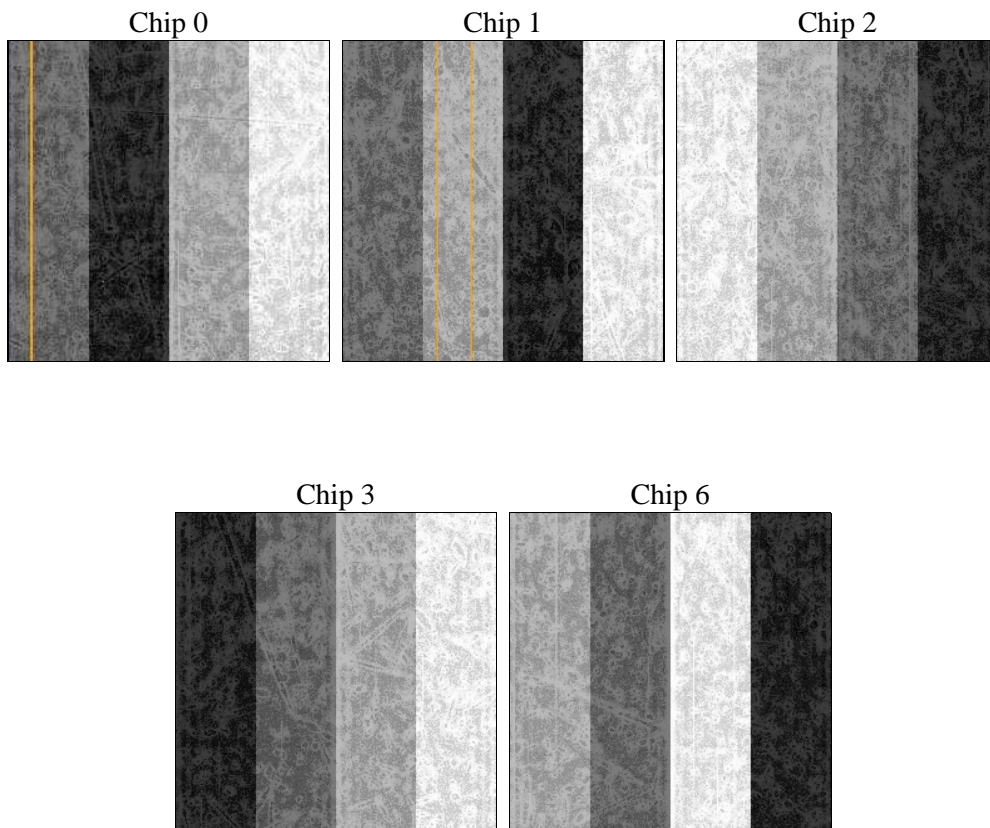
2 OBI

2.1 OBI

2.1.1 Images



2.1.2 Bias



2.1.3 Parameters

obi_num	0	Obi number	sched_exp_time	9000.000000	[s] Scheduled observation exposure time
ascdsver	8.4.3	Processing system revision	ontime	9053.9769406319	Sum of GTIs [s]
caldsver	4.4.7	 	ontime0	9053.853820622	Sum of GTIs [s]
date	2012-01-15T07:27:03	Date and time of file creation	ontime1	9053.8948606253	Sum of GTIs [s]
revision	1	Processing version of data	ontime2	9053.9359006286	Sum of GTIs [s]
			ontime3	9053.9769406319	Sum of GTIs [s]
			ontime6	9053.8127806187	Sum of GTIs [s]
			l1events	288468	Number of level 1 events

2.1.4 Events

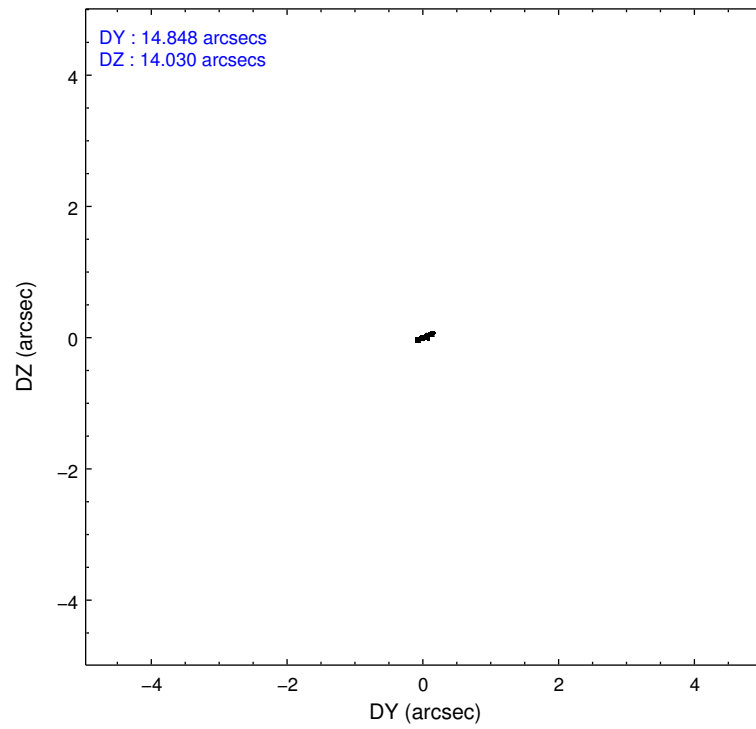
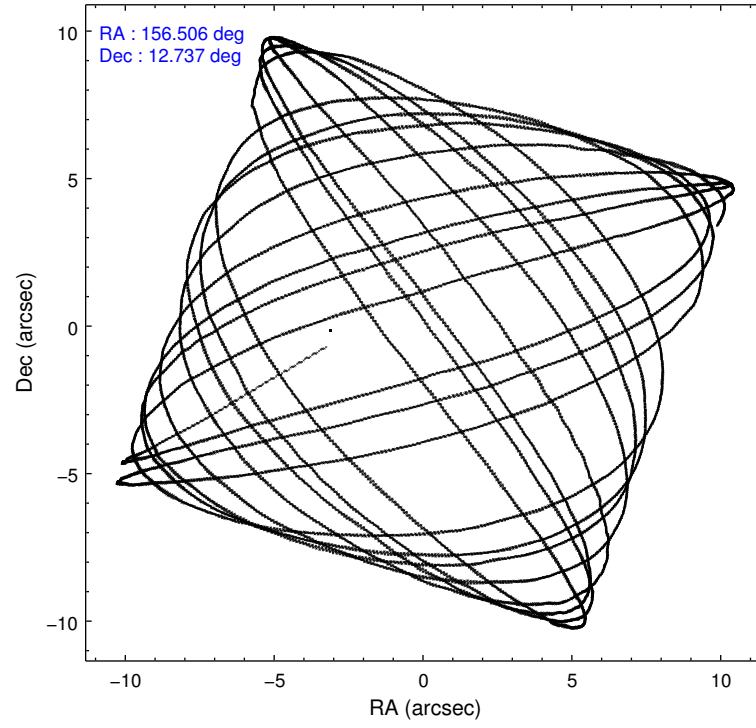
	ccd 0	ccd 1	ccd 2	ccd 3	ccd 6
level 1 events	52342	54151	58524	66247	57204
rejected events	45754	46581	51950	49956	50556
rejected %	87%	86%	88%	75%	88%

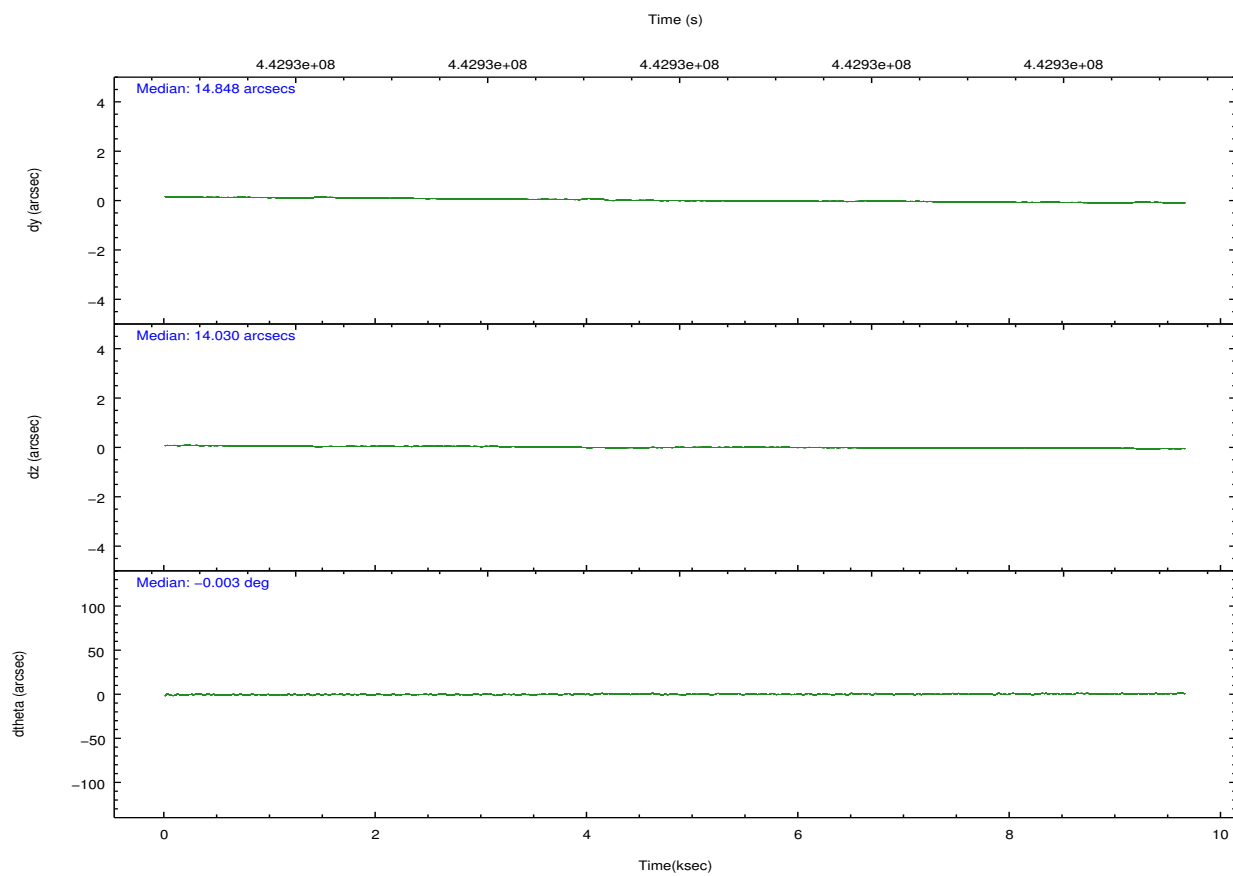
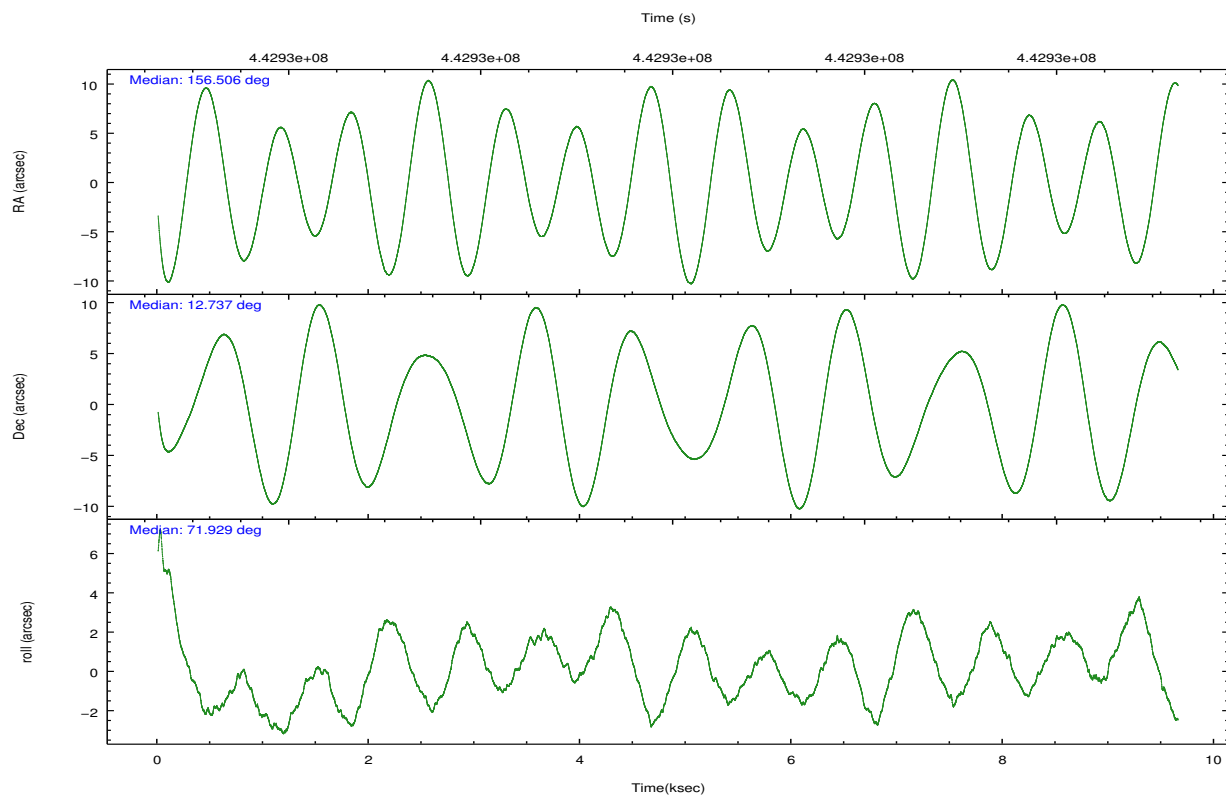
	ccd 0	ccd 1	ccd 2	ccd 3	ccd 6
grade 0 events	2315	2813	2440	10327	2214
	4%	5%	4%	15%	3%
grade 1 events	19	34	52	77	23
	0%	0%	0%	0%	0%
grade 2 events	1513	1746	1551	2410	1486
	2%	3%	2%	3%	2%
grade 3 events	733	758	656	1014	711
	1%	1%	1%	1%	1%
grade 4 events	671	733	664	961	724
	1%	1%	1%	1%	1%
grade 5 events	2473	2700	2472	2804	2727
	4%	4%	4%	4%	4%
grade 6 events	1358	1526	1266	1591	1515
	2%	2%	2%	2%	2%
grade 7 events	43260	43841	49423	47063	47804
	82%	80%	84%	71%	83%

2.2 Compared Parameters

Parameter	Planned	Actual	Parameter	Planned	Actual
Instrument	ACIS	ACIS	Obspar format version number	7	7
Detector	ACIS-01236	ACIS-01236	Obspar file type	PREDICTED	ACTUAL
Grating	NONE	NONE	Obspar update status	NONE	UPDATED
Data mode	VFAINT	VFAINT	CCD I0 on	Y	Y
Observation mode	POINTING	POINTING	CCD I1 on	Y	Y
[deg] Pointing RA	156.511747	156.5057929418357	CCD I2 on	Y	Y
[deg] Pointing Dec	12.710417	12.73731739433504	CCD I3 on	Y	Y
[deg] Pointing Roll	71.720986	71.93099210728529	CCD S0 on	N	N
[mm] SIM focus pos	-0.782348	-0.7809083437167272	CCD S1 on	N	N
[mm] SIM defocus	0	0.001439871863259334	CCD S2 on	O1	Y
[mm] SIM translation stage pos	-225.892463	-225.8860866921504	CCD S3 on	N	N
[mm] SIM translation stage offset	-7.7	-7.706366310779288	CCD S4 on	N	N
[s] Observation start time (MET)	442925784.184000	442924620.68221	CCD S5 on	N	N
Observation start date	2012-01-14T10:55:18	2012-01-14T10:37:00	Number of optional ACIS chips dropped	0	0
[s] Observation end time (MET)	442934784.184000	442935931.55781	On-chip summing requested	N	N
Observation end date	2012-01-14T13:25:18	2012-01-14T13:45:31	Subarray requested	NONE	NONE
Read mode	TIMED	TIMED	Alternating exposures requested	N	N
			[s] Primary exposure time	0.000000	3.1

2.3 Aspect



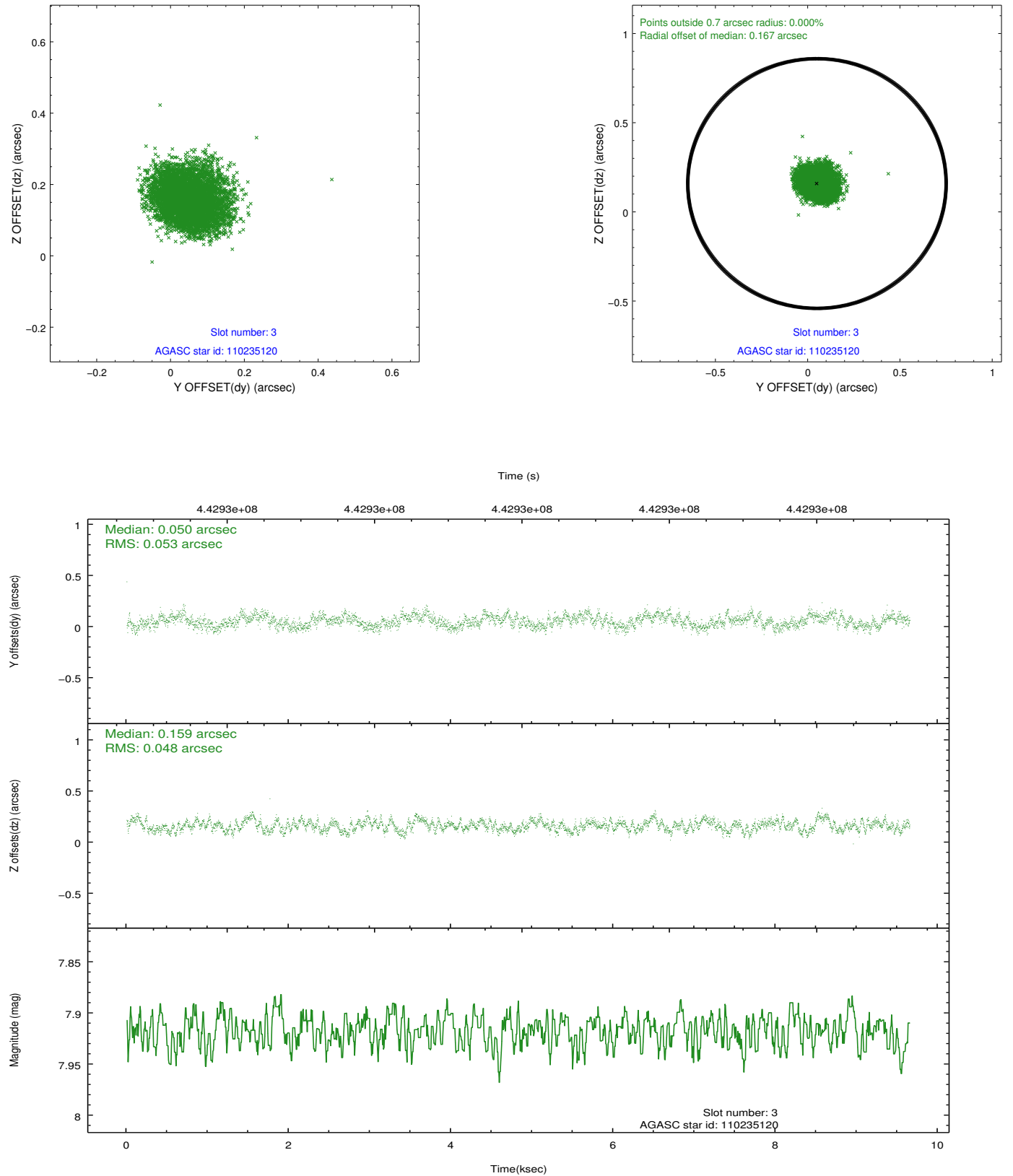


Slot Statistics

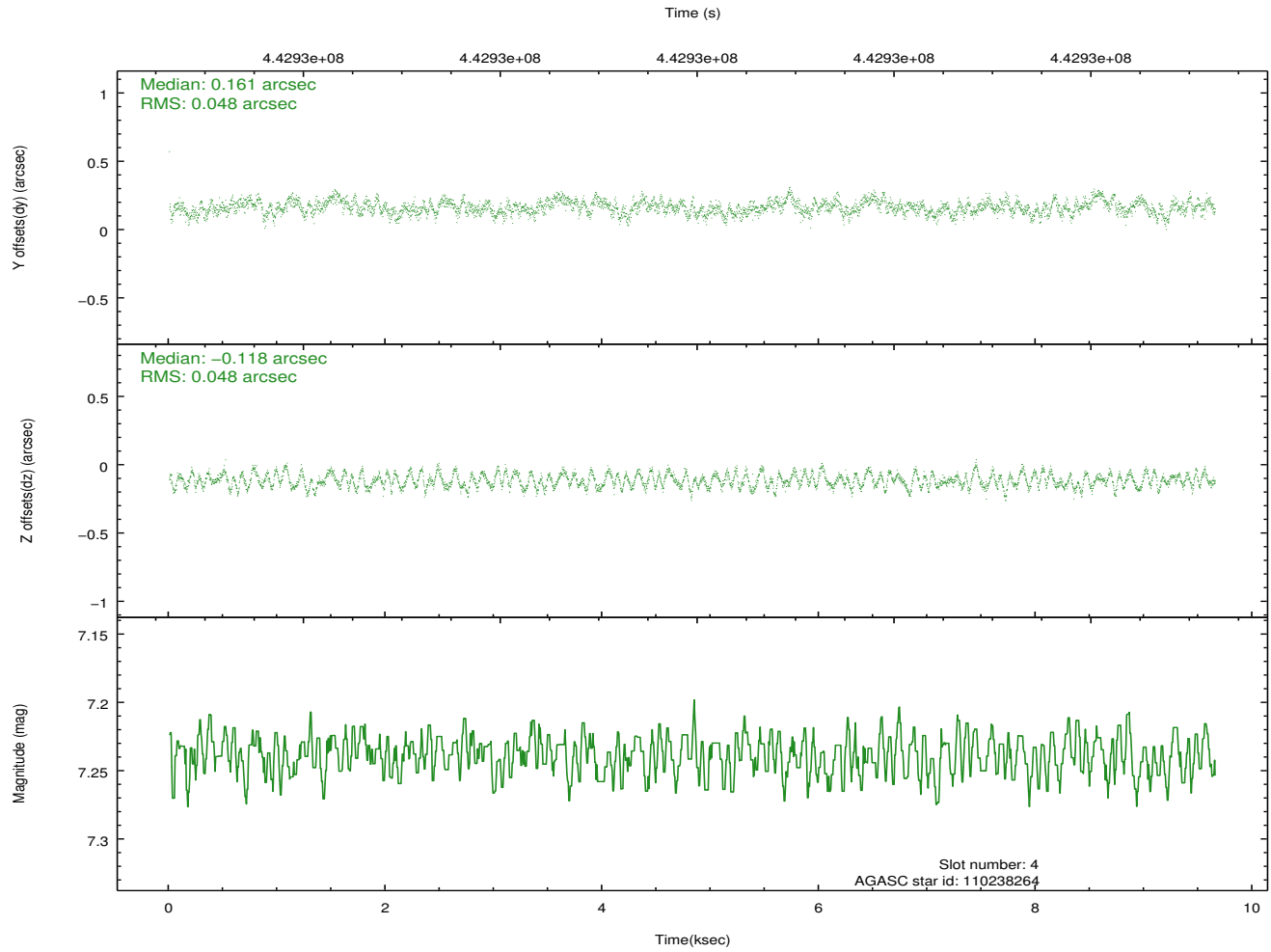
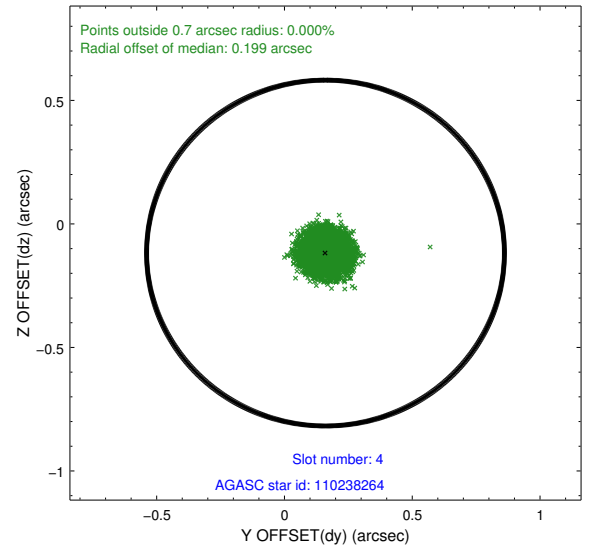
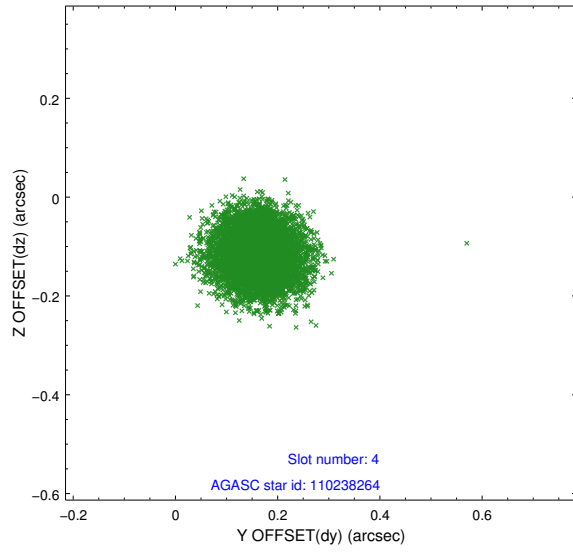
slot	status	id	mag	n_pts	med_dy	med_dz	dr1	dr2	ra	dec	mean_y	mean_z
0	FID	ACIS-I-1	7.16	2354	0.150	-0.087	0.006	0.011	0.000000	0.000000	924.62	-995.88
1	FID	ACIS-I-5	7.15	2354	-0.362	0.109	0.006	0.010	0.000000	0.000000	-1823.72	901.41
2	FID	ACIS-I-6	7.17	2354	0.120	0.049	0.006	0.010	0.000000	0.000000	389.49	1546.52
3	GUIDE	110235120	7.92	4708	0.050	0.159	0.077	0.119	156.664235	12.488642	-589.51	-758.88
4	GUIDE	110238264	7.24	4709	0.161	-0.118	0.074	0.111	156.820348	12.445060	-565.92	-1329.78
5	GUIDE	110630624	9.23	4693	0.083	0.047	0.116	0.197	157.124452	13.155507	2197.48	-1535.44
6	GUIDE	110635072	8.33	4708	-0.128	-0.386	0.079	0.127	156.523797	13.152622	1524.92	458.54
7	GUIDE	110635616	8.45	4706	-0.159	0.294	0.081	0.130	156.244029	12.730204	-226.35	915.80

2.4 Star Slots

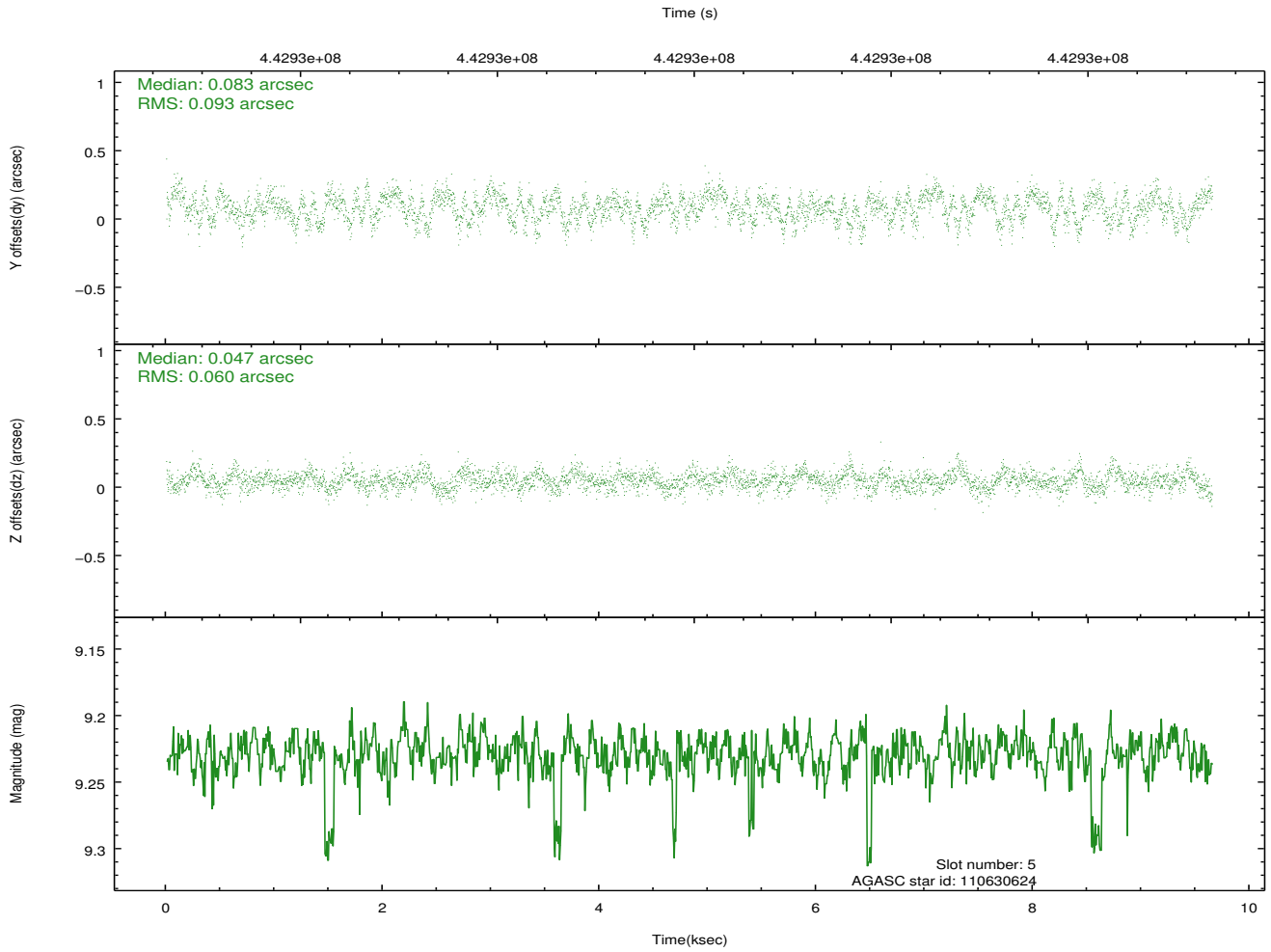
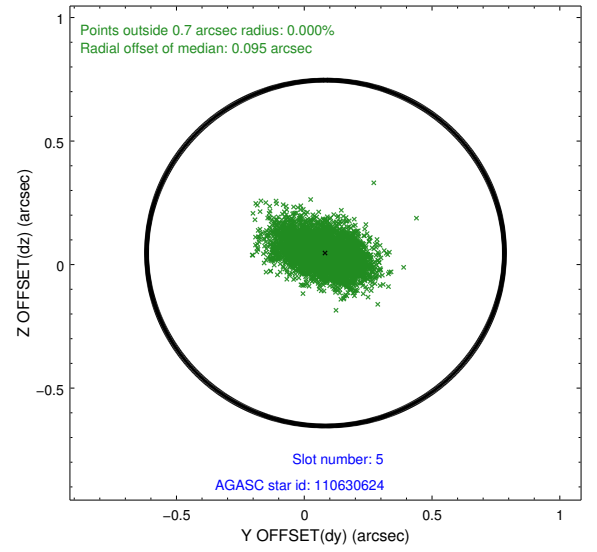
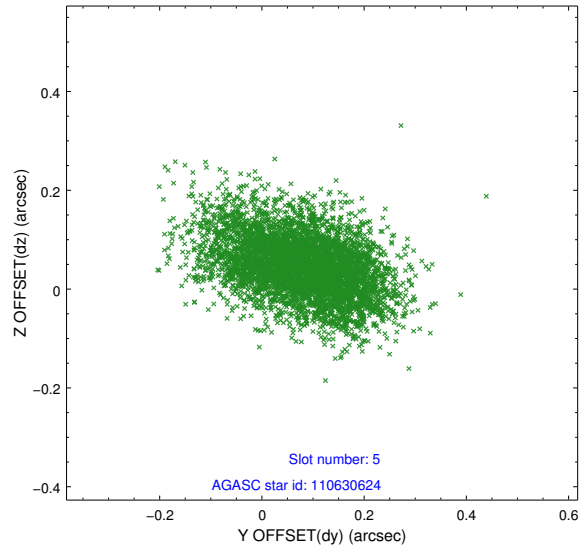
2.4.1 Slot 3



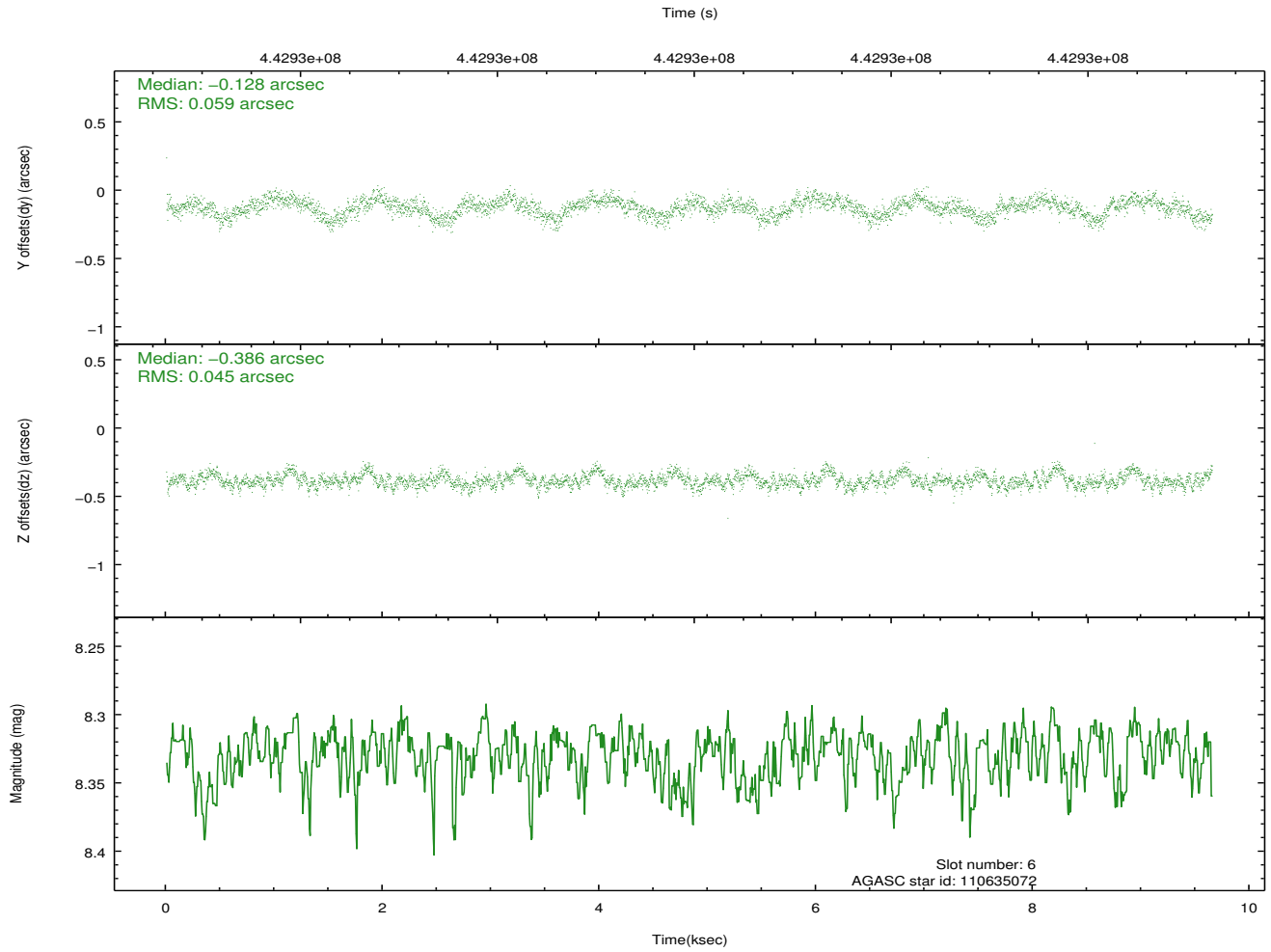
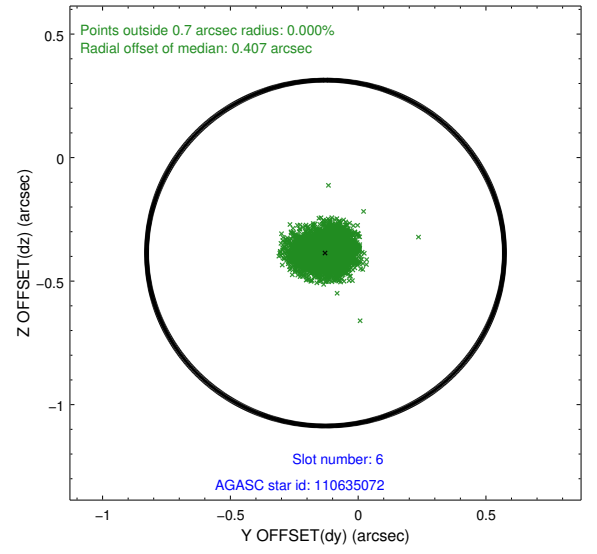
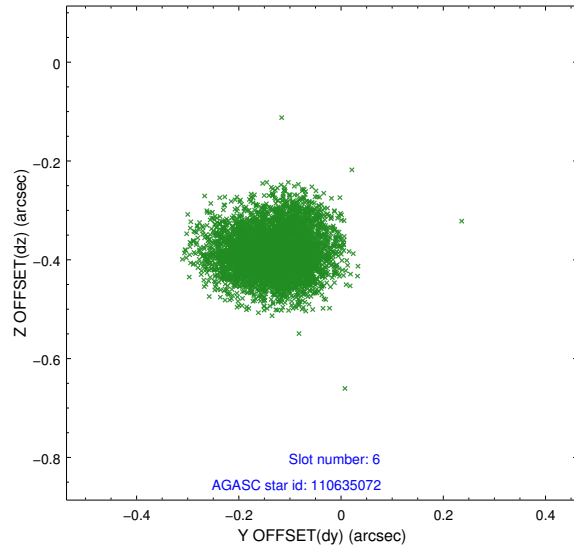
2.4.2 Slot 4



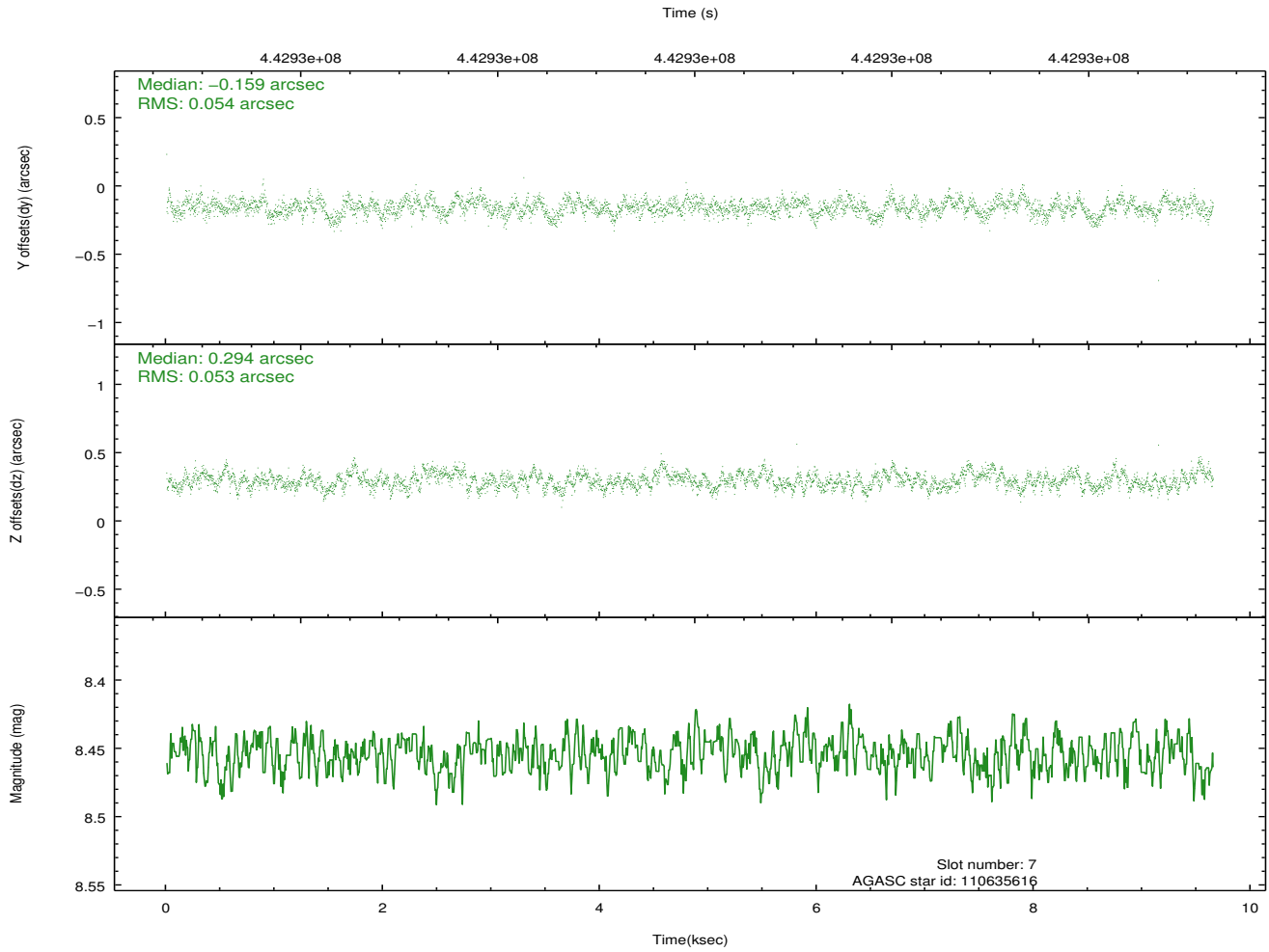
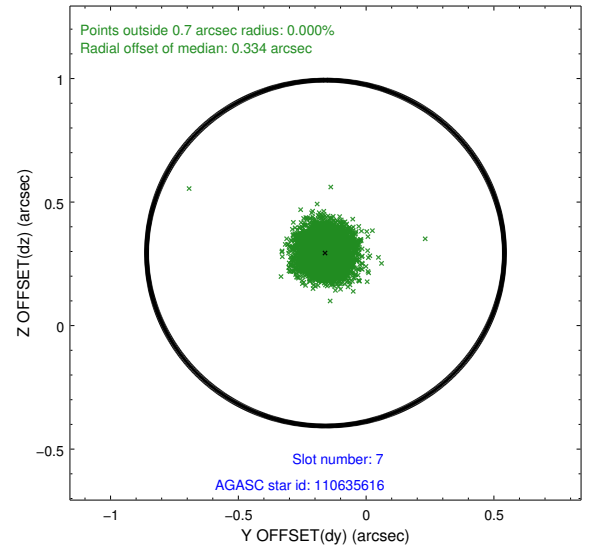
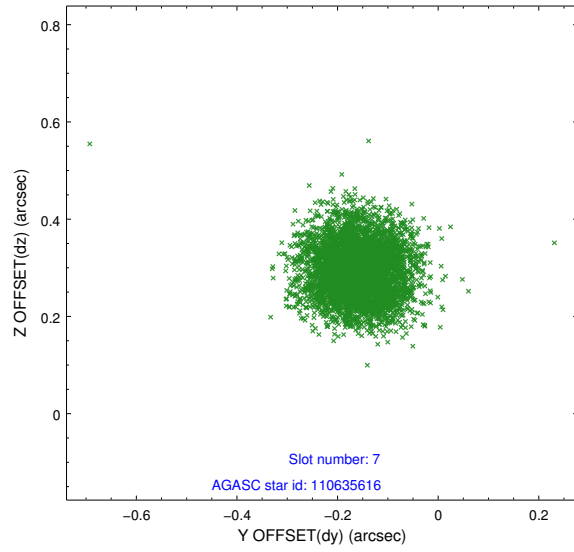
2.4.3 Slot 5



2.4.4 Slot 6

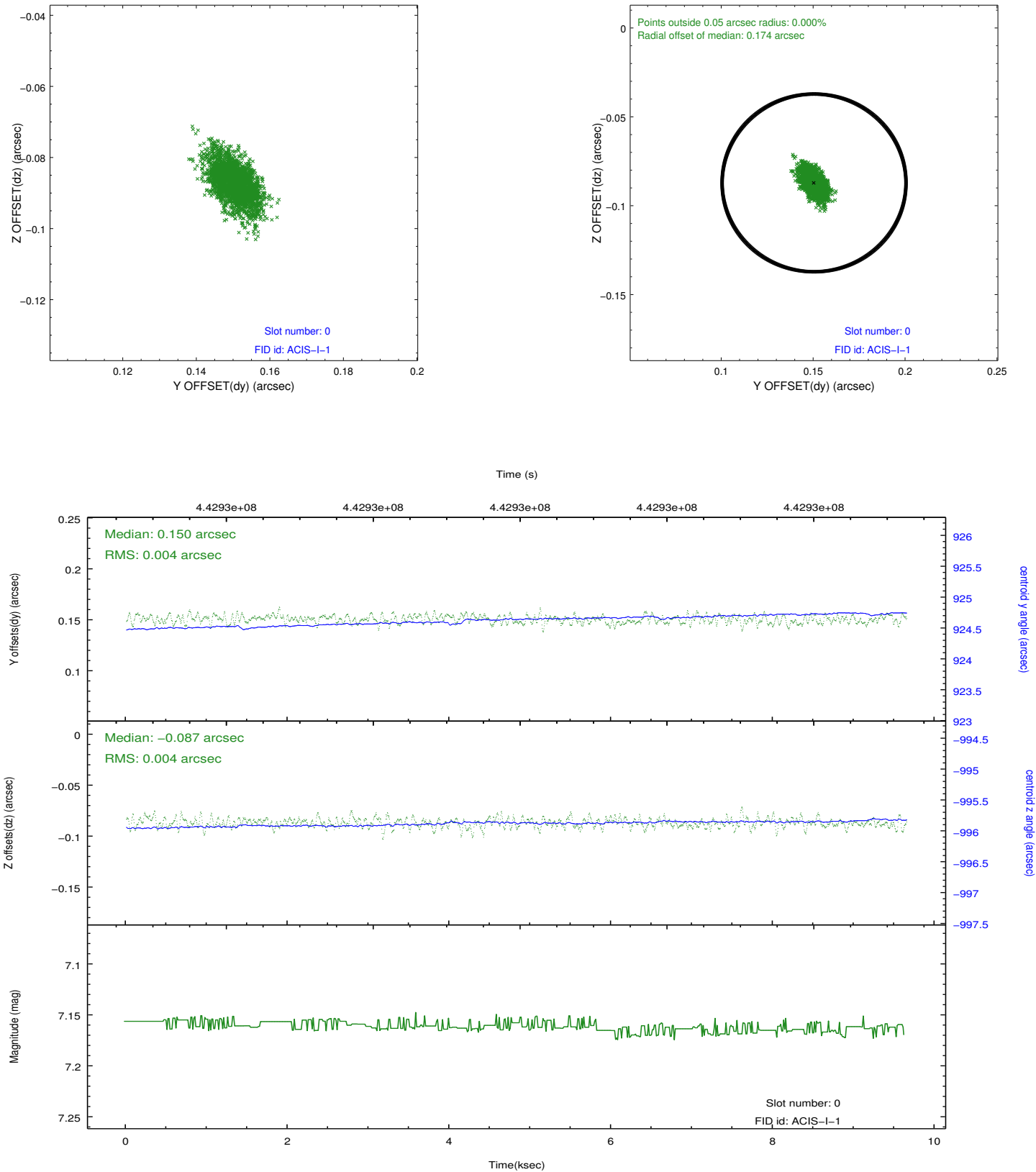


2.4.5 Slot 7

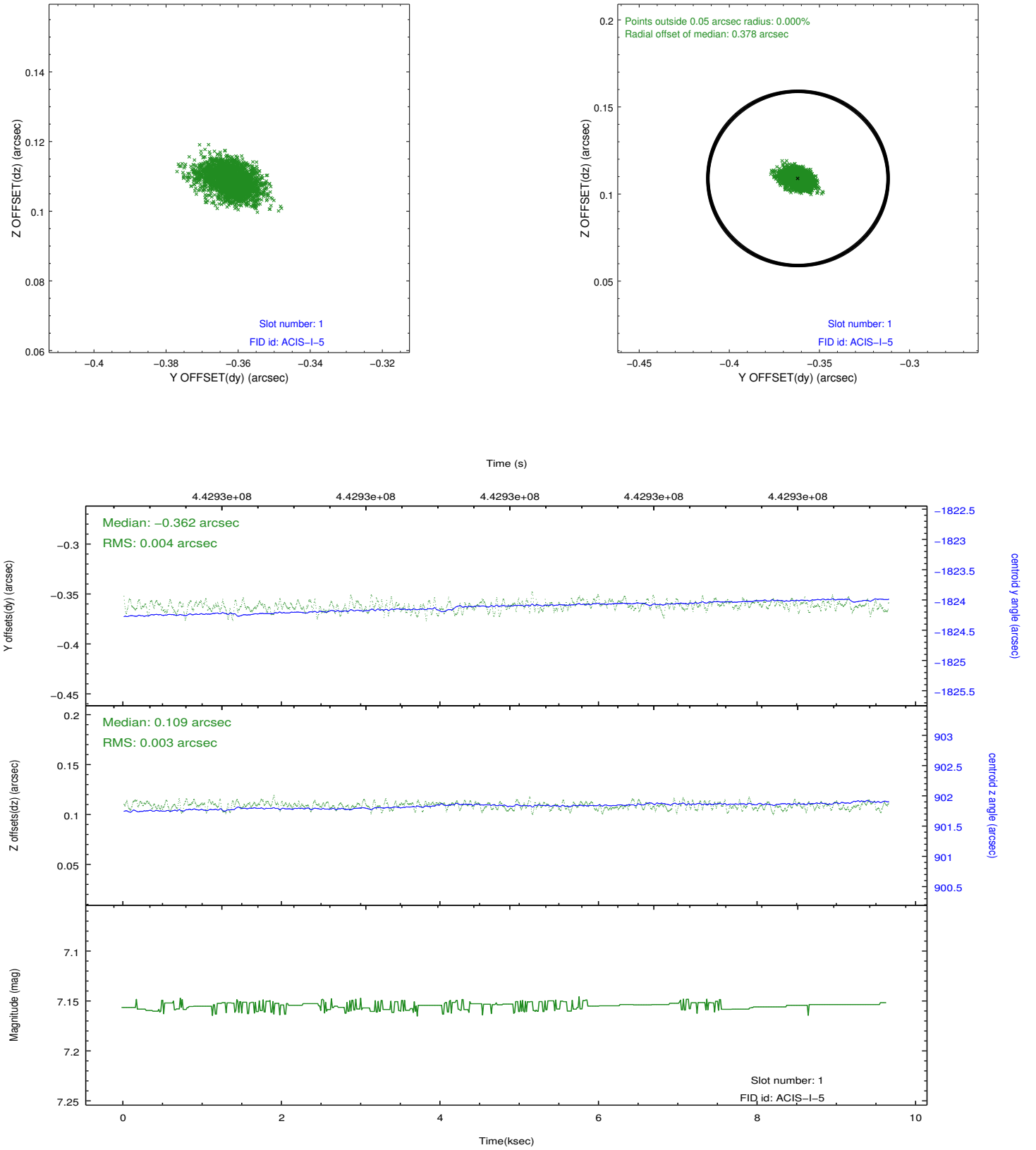


2.5 FID Slots

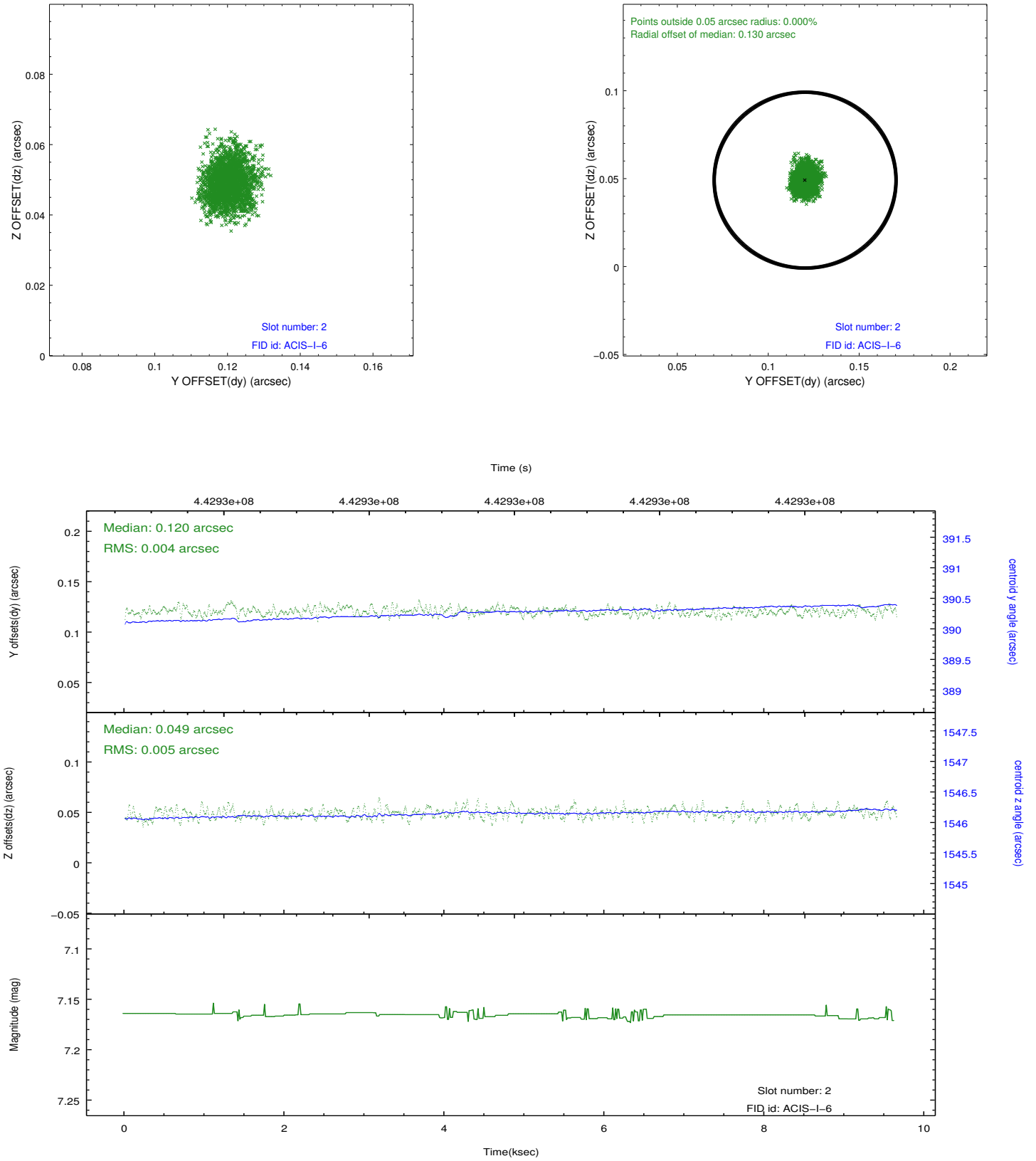
2.5.1 Slot 0



2.5.2 Slot 1



2.5.3 Slot 2



A Summary

A.1 Status

V&V Scientist	Jen Lauer
V&V Date (YYYY-MM-DD)	2012.01.15
V&V Edition	1
V&V Disposition and Status	OK
V&V Charge Time	9.0539769406319

A.2 Comments