

V&V Reference Report

L2 ASCDS Version : 8.5.1

Observation 13969 - L2 Version 2
Chandra X-Ray Center

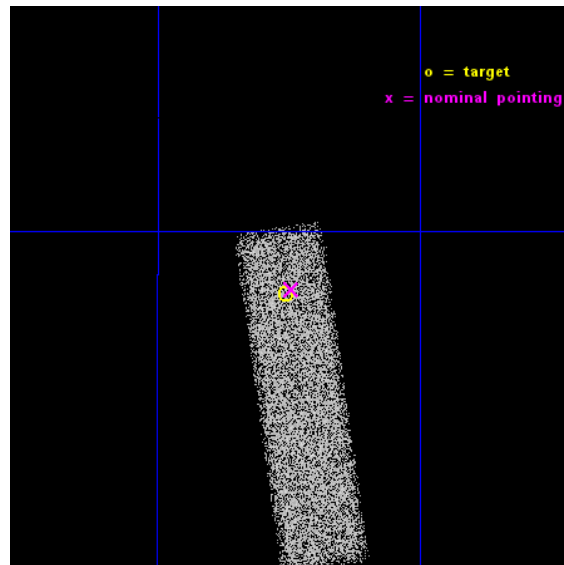
L2 Processing Date : Nov 30 2014

Contents

1	Front	2
2	OBI	3
2.1	OBI	3
2.1.1	Images	3
2.1.2	Bias	3
2.1.3	Parameters	4
2.1.4	Events	4
2.2	Compared Parameters	5
2.3	Aspect	6
2.4	Star Slots	9
2.4.1	Slot 3	9
2.4.2	Slot 4	10
2.4.3	Slot 5	11
2.4.4	Slot 6	12
2.4.5	Slot 7	13
2.5	FID Slots	14
2.5.1	Slot 0	14
2.5.2	Slot 1	15
2.5.3	Slot 2	16
A	Summary	17
A.1	Status	17
A.2	Comments	17

1 Front

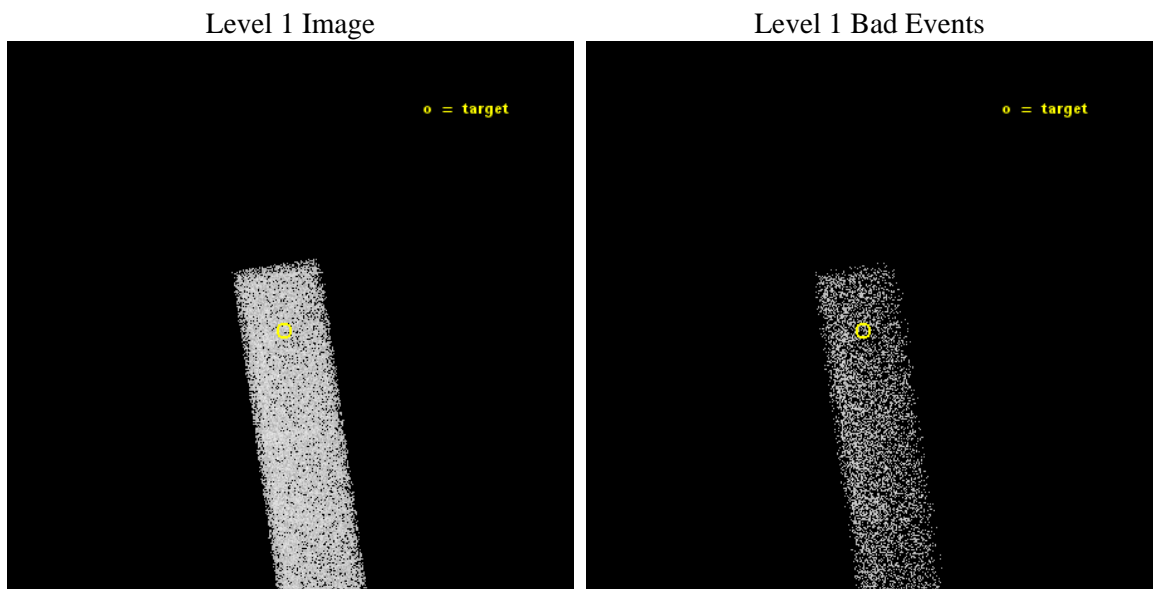
seq_num	702690	Sequence number
obs_id	13969	Observation id
title	Black Holes at the Centers of Nearby Dwarf Galaxies	Proposal title
observer	Dr. Edward Moran	Principal investigator
object	J0811+2328	Source name
dtcycle	0	
cycle	P	events from which exps? Prim/Second/Both
ra_targ	122.93875	Observer's specified target RA [deg]
dec_targ	23.473806	Observer's specified target Dec [deg]
ra_nom	122.93625055698	Nominal RA [deg]
dec_nom	23.475790920069	Nominal Dec [deg]
roll_nom	81.672935189783	Nominal Roll [deg]
revision	2	Processing version of data
ontime	24060.000358582	Sum of GTIs [s]
livetime	22885.951068755	Livetime [s]
ontime7	24060.000358582	Sum of GTIs [s]
l2events	19983	Number of level 2 events



2 OBI

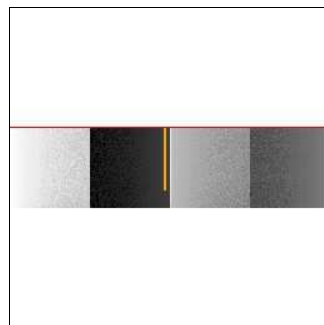
2.1 OBI

2.1.1 Images



2.1.2 Bias

Chip 7



2.1.3 Parameters

obi_num	0	Obi number	sched_exp_time	24000.000000	[s] Scheduled observation exposure time
ascdsver	10.3	Processing system revision	ontime	24060.000358582	Sum of GTIs [s]
caldsver	4.6.4	 	ontime7	24060.000358582	Sum of GTIs [s]
date	2014-11-30T10:27:04	Date and time of file creation	l1events	43039	Number of level 1 events
revision	2	Processing version of data			

2.1.4 Events

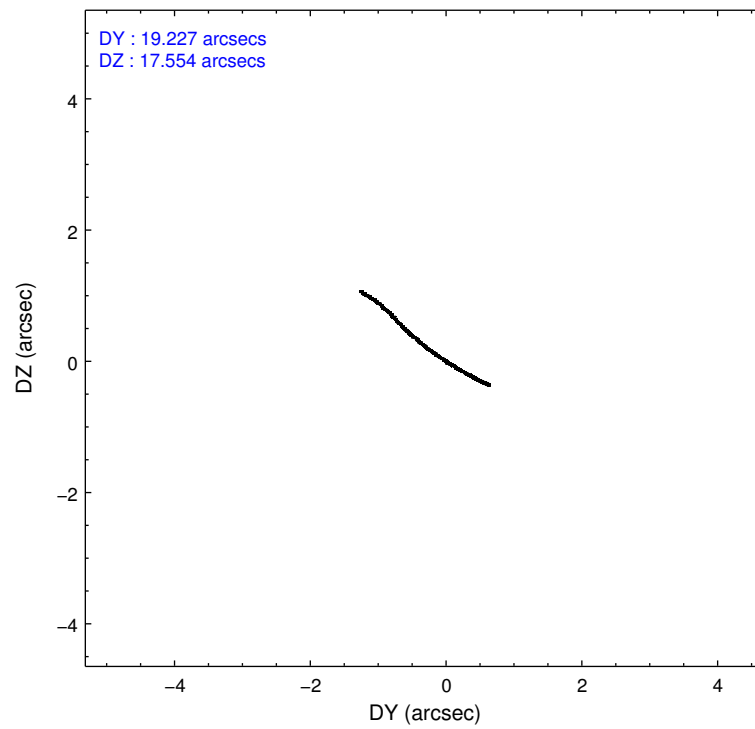
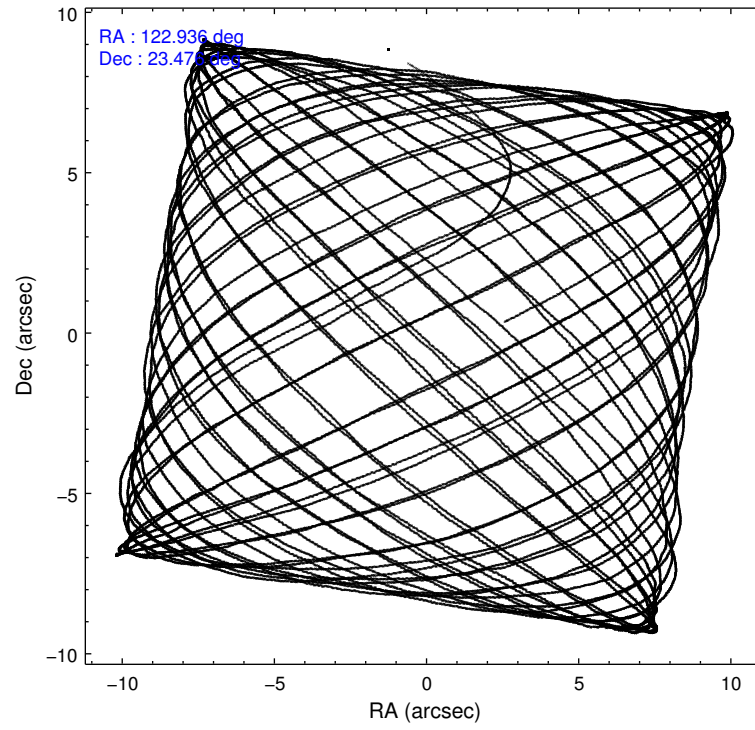
	ccd 7
level 1 events	43039
rejected events	22383
rejected %	52%

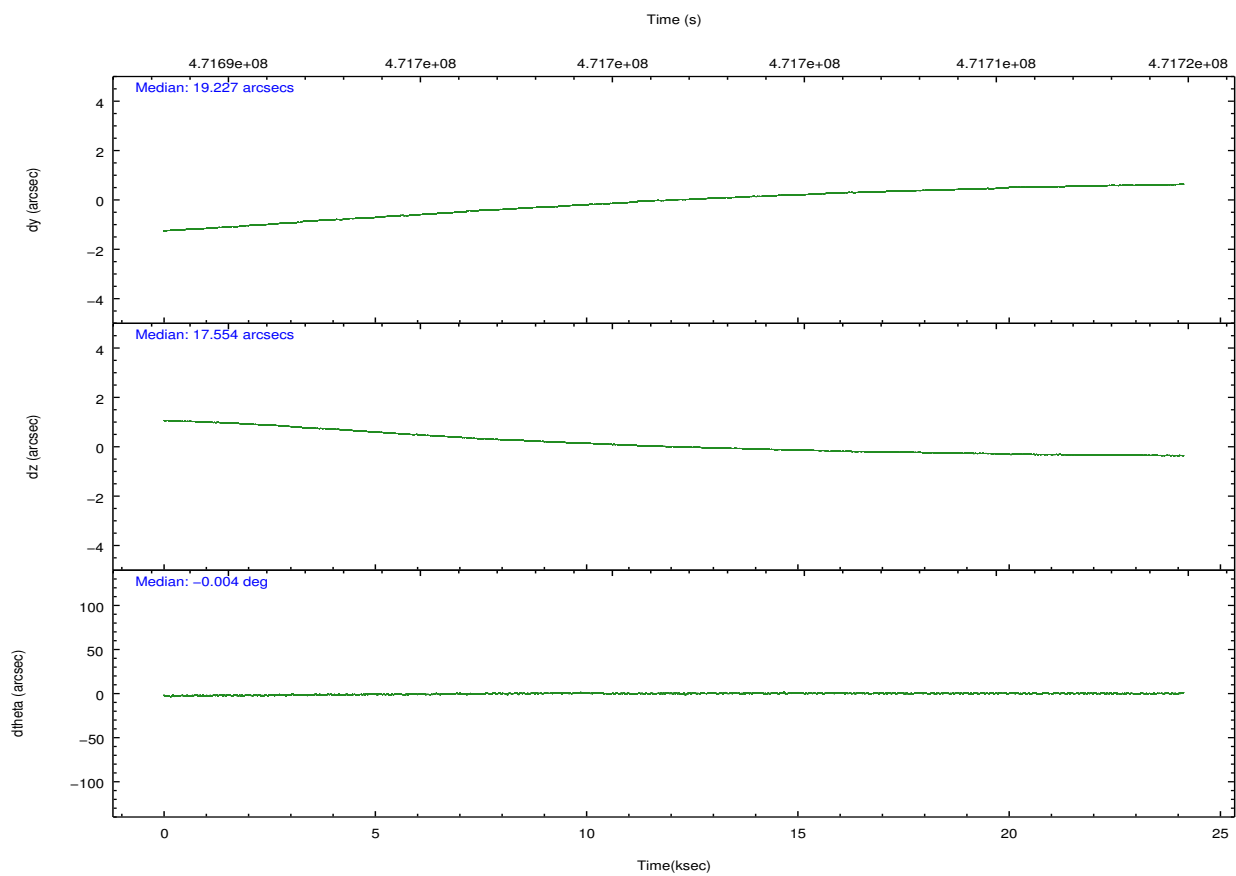
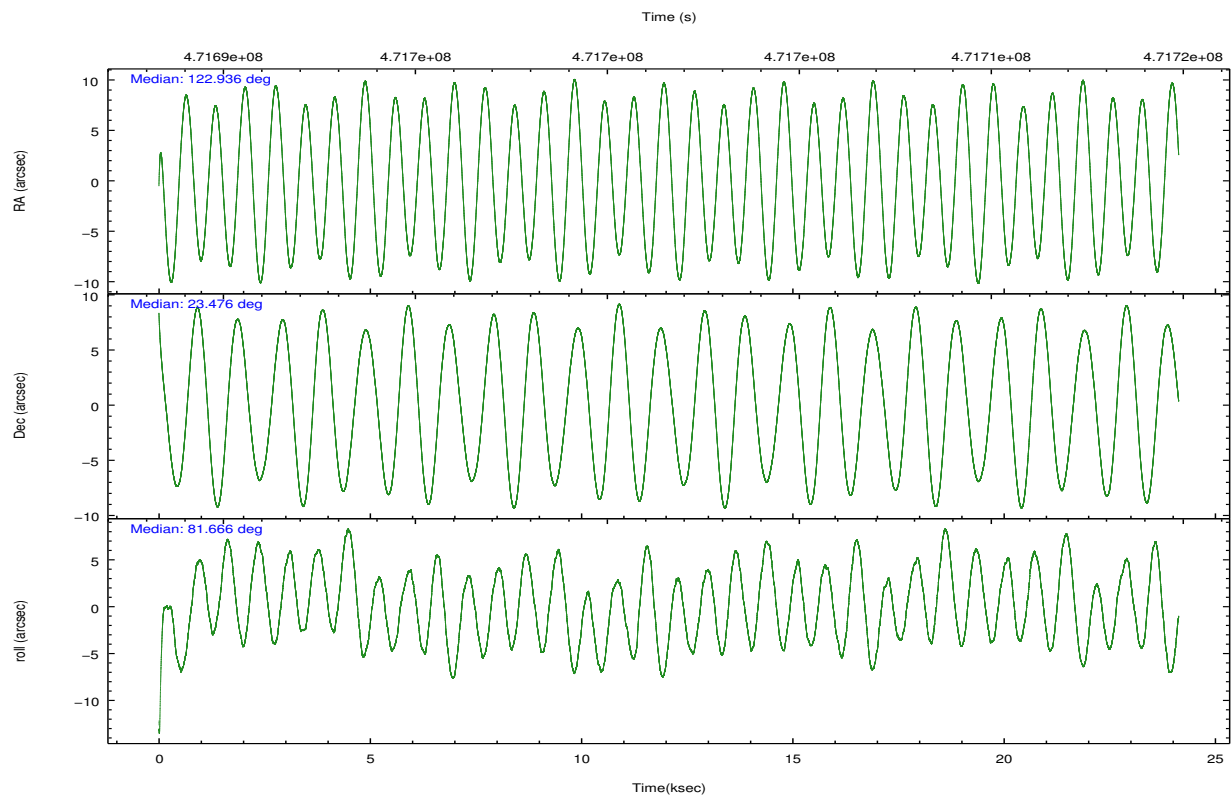
	ccd 7
grade 0 events	2004
	4%
grade 1 events	63
	0%
grade 2 events	4259
	9%
grade 3 events	2401
	5%
grade 4 events	2278
	5%
grade 5 events	4674
	10%
grade 6 events	9717
	22%
grade 7 events	17643
	40%

2.2 Compared Parameters

Parameter	Planned	Actual	Parameter	Planned	Actual
Instrument	ACIS	ACIS	Obspar format version number	7	7
Detector	ACIS-7	ACIS-7	Obspar file type	PREDICTED	ACTUAL
Grating	NONE	NONE	Obspar update status	NONE	UPDATED
Data mode	FAINT	FAINT	Number of optional ACIS chips dropped	0	0
Observation mode	POINTING	POINTING	On-chip summing requested	N	N
[deg] Pointing RA	122.947646	122.9362505569832	Subarray requested	CUSTOM	1/4
[deg] Pointing Dec	23.450516	23.47579092006918	Subarray start row	385	385
[deg] Pointing Roll	81.511777	81.6729351897833	Subarray row count	256	256
[mm] SIM focus pos	-0.684267	-0.6828225247311905	Alternating exposures requested	N	N
[mm] SIM defocus	0	0.001444936568705701	[s] Primary exposure time	0.000000	0.8
[mm] SIM translation stage pos	-190.132523	-190.1425803651734			
[mm] SIM translation stage offset	0	0.01005778216563158			
[s] Observation start time (MET)	471689667.184000	471688666.26237			
Observation start date	2012-12-12T08:53:20	2012-12-12T08:37:46			
[s] Observation end time (MET)	471713667.184000	471714567.50127			
Observation end date	2012-12-12T15:33:20	2012-12-12T15:49:27			
Read mode	TIMED	TIMED			

2.3 Aspect



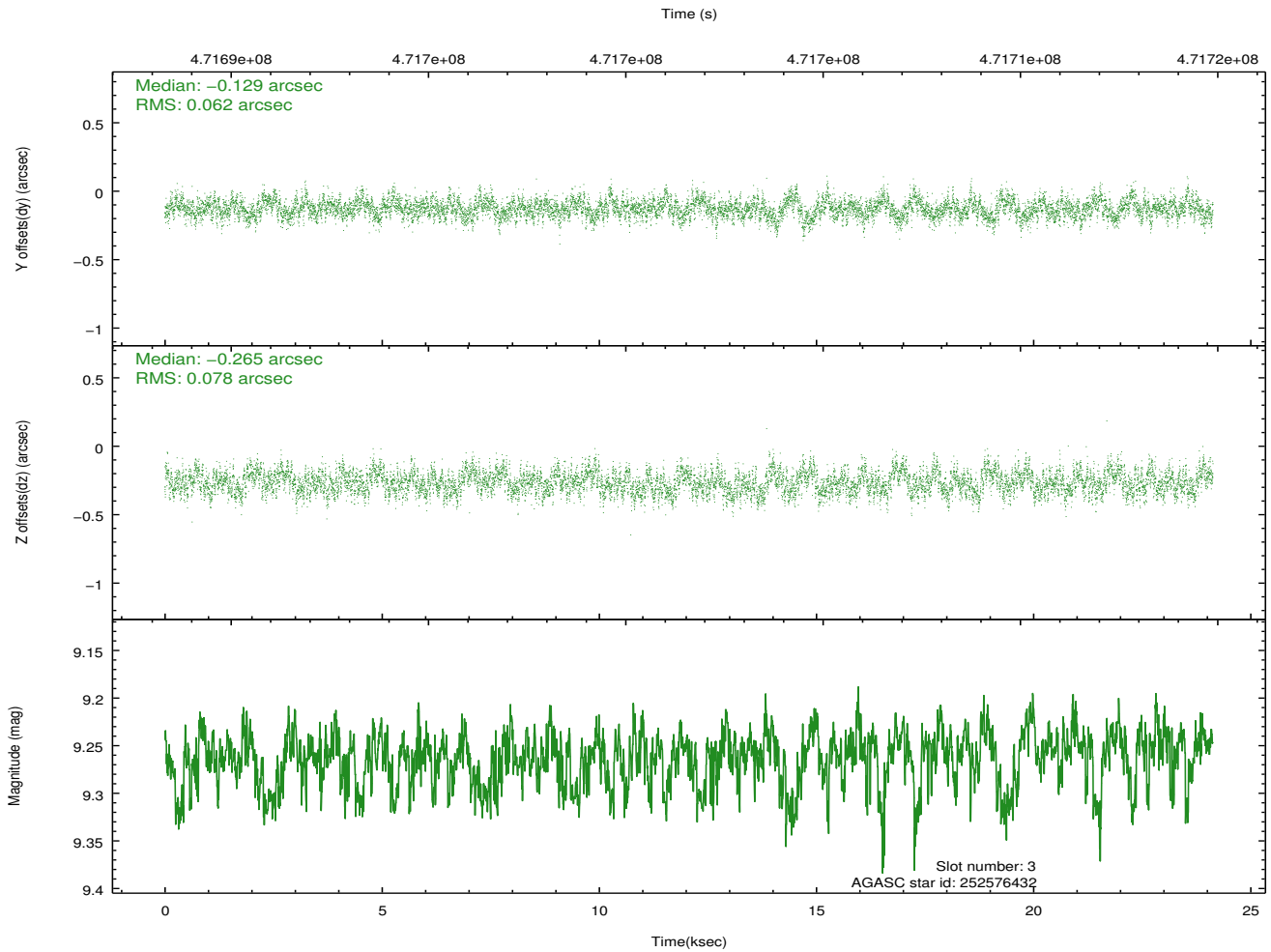
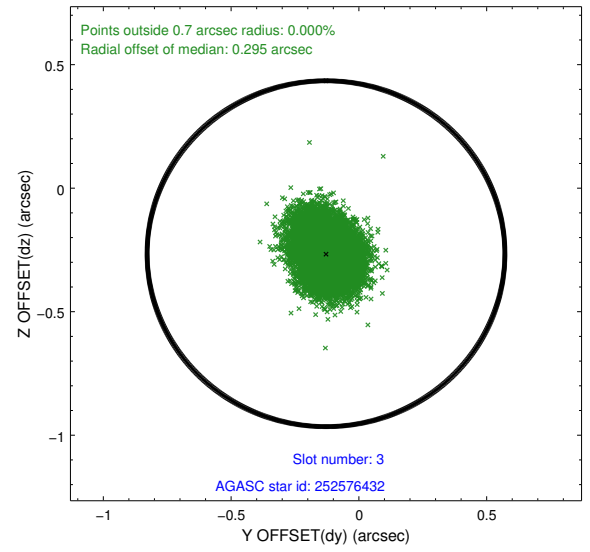
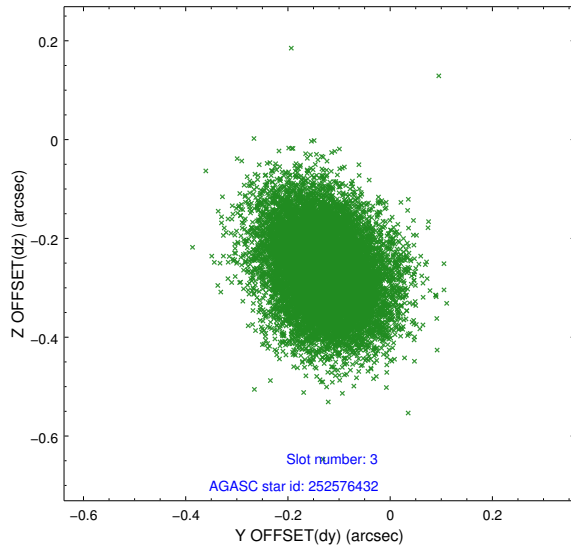


Slot Statistics

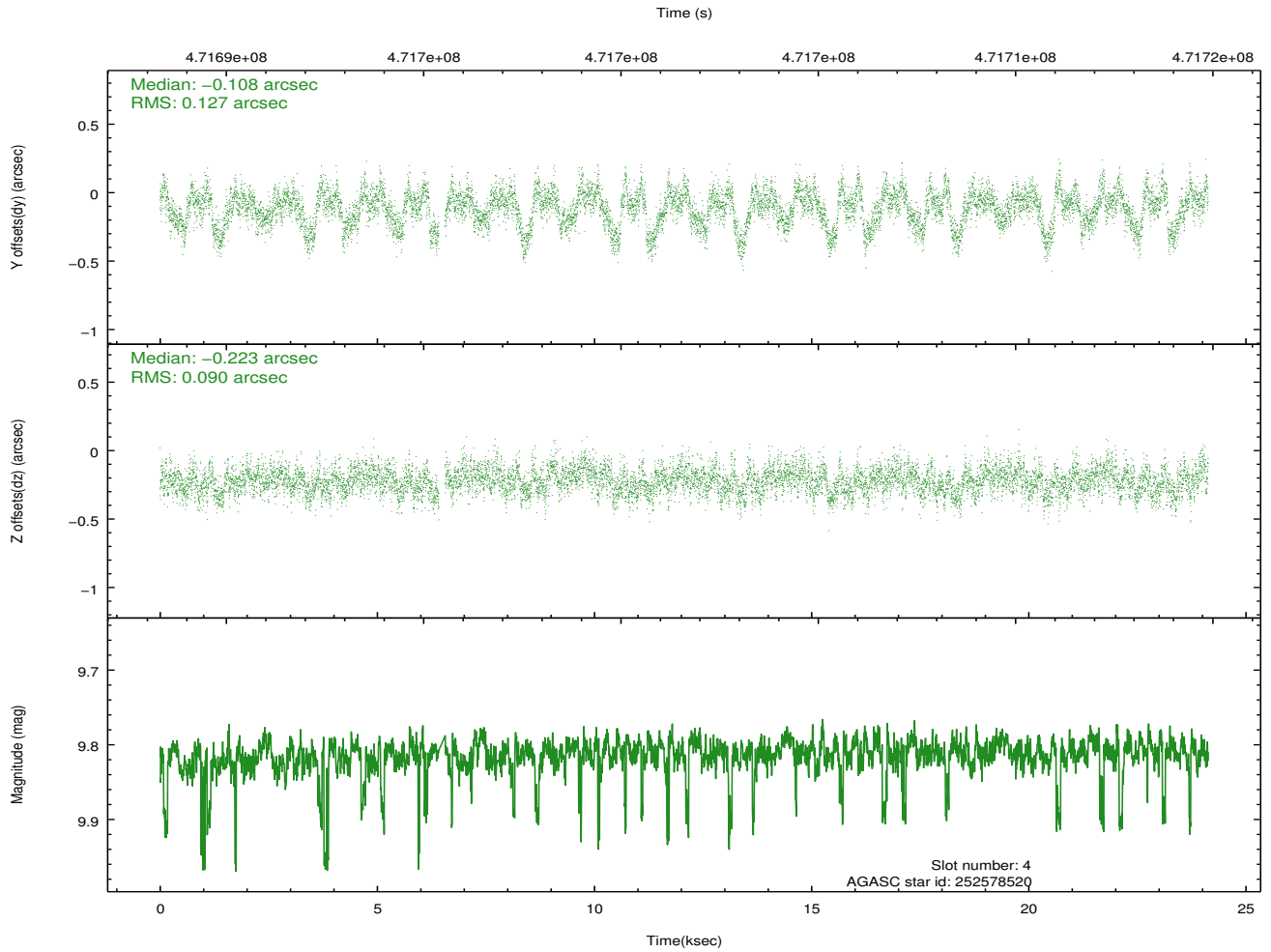
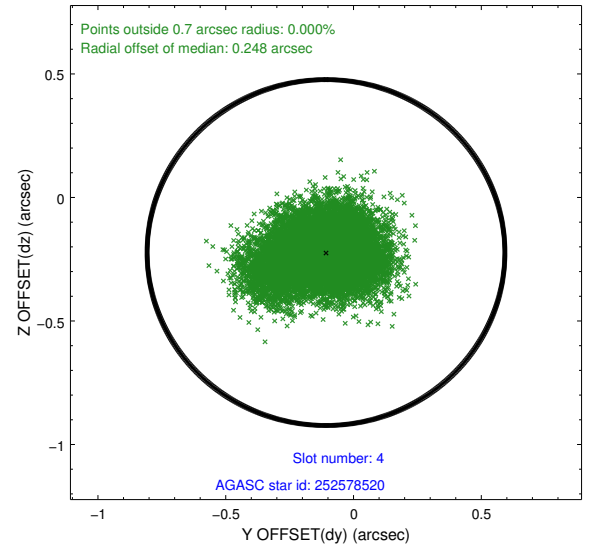
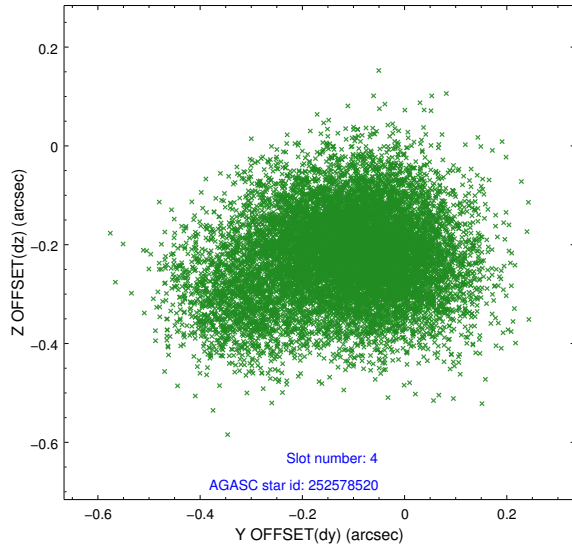
slot	status	used	id	mag	n_pts	med_dy	med_dz	dr1	dr2	ra	dec	mean_y	mean_z
0	FID		ACIS-S-1	7.01	5887	0.052	-0.019	0.026	0.039	0.000000	0.000000	923.86	-1734.76
1	FID		ACIS-S-4	7.02	5886	0.181	-0.010	0.024	0.043	0.000000	0.000000	2141.49	169.25
2	FID		ACIS-S-5	7.05	5887	-0.258	0.039	0.012	0.024	0.000000	0.000000	-1825.13	163.10
3	GUIDE	used	252576432	9.26	11740	-0.129	-0.265	0.106	0.171	122.367578	23.631307	364.97	1988.57
4	GUIDE	used	252578520	9.81	11651	-0.108	-0.223	0.164	0.277	122.599300	23.921845	1510.15	1384.54
5	GUIDE	used	252588072	9.45	11766	0.177	0.021	0.133	0.209	122.619162	23.062364	-1540.96	869.93
6	GUIDE	used	252588752	6.99	11773	0.037	0.306	0.089	0.150	123.423712	23.137732	-878.34	-1723.94
7	GUIDE	used	252706824	9.15	11741	0.033	0.151	0.156	0.260	123.776943	23.938437	2148.19	-2438.13

2.4 Star Slots

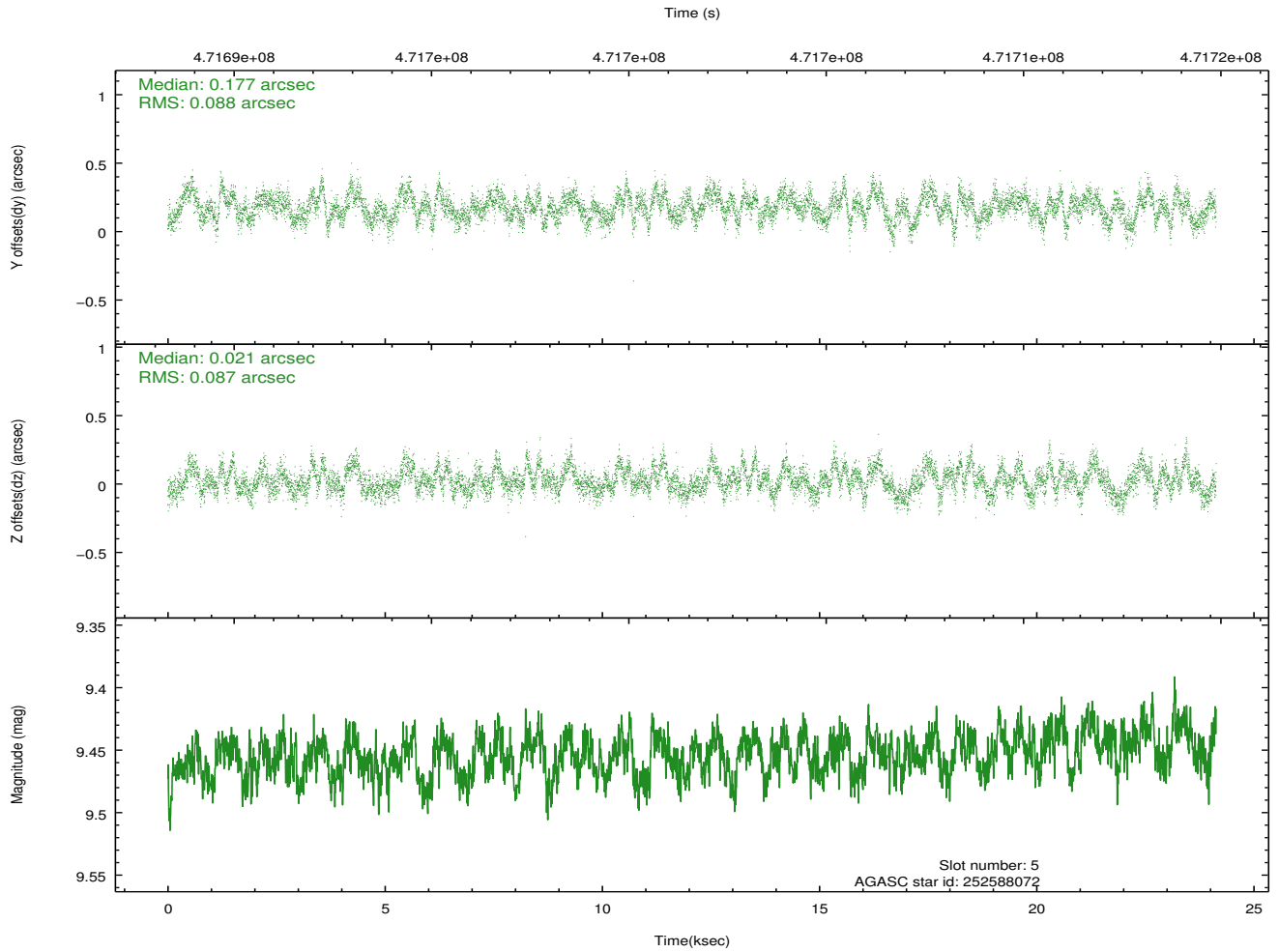
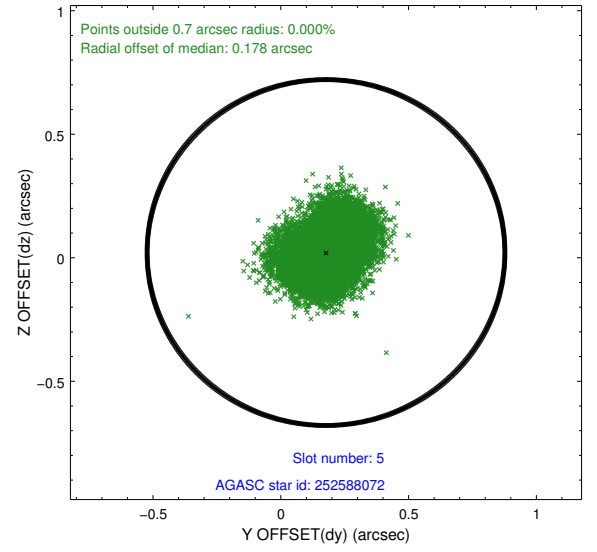
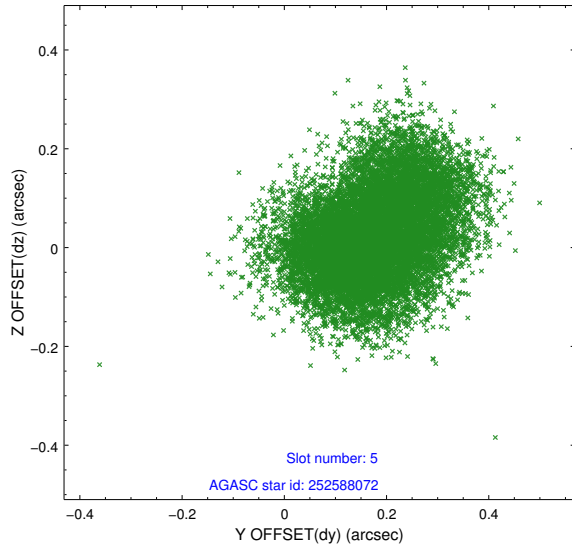
2.4.1 Slot 3



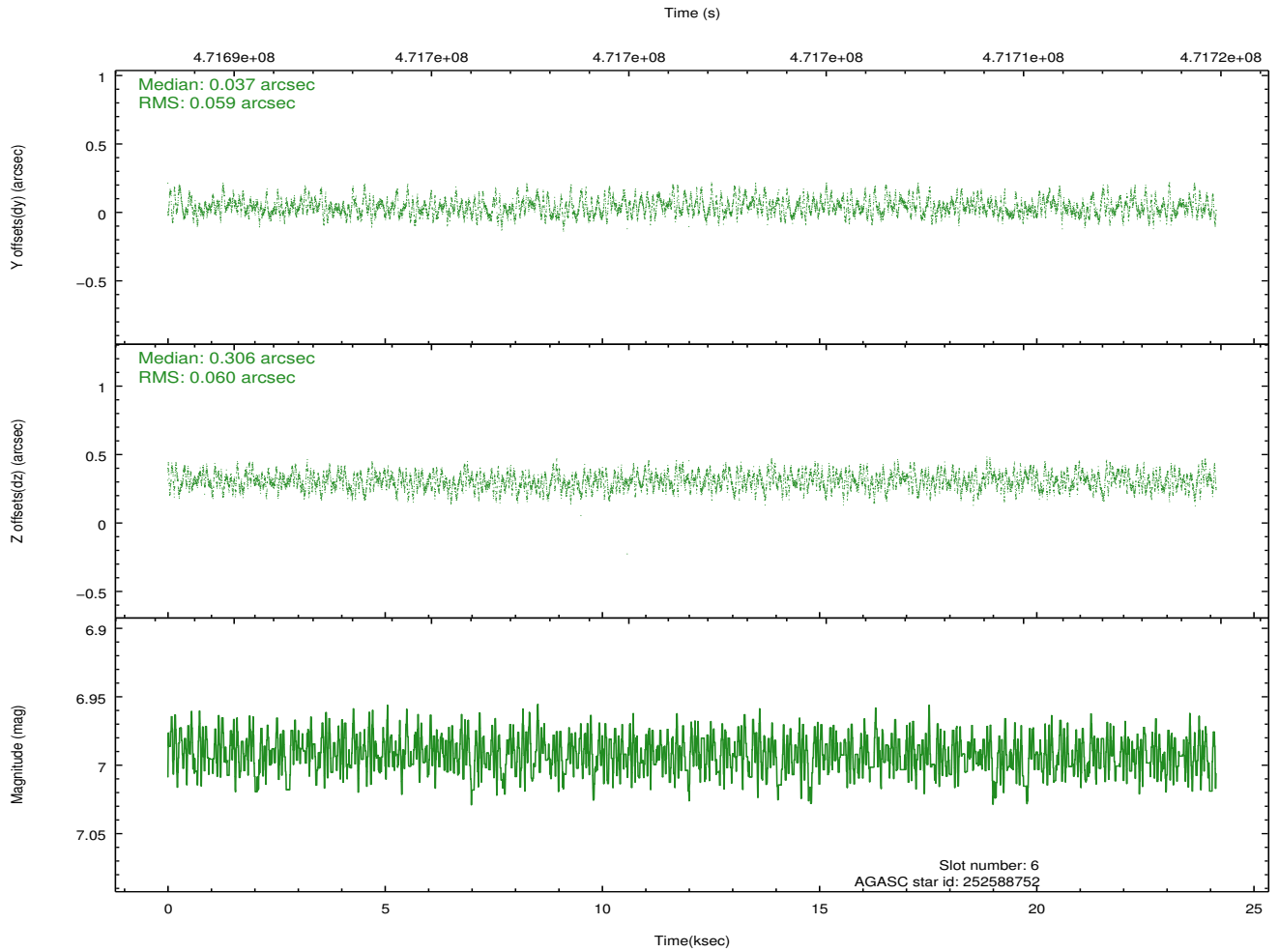
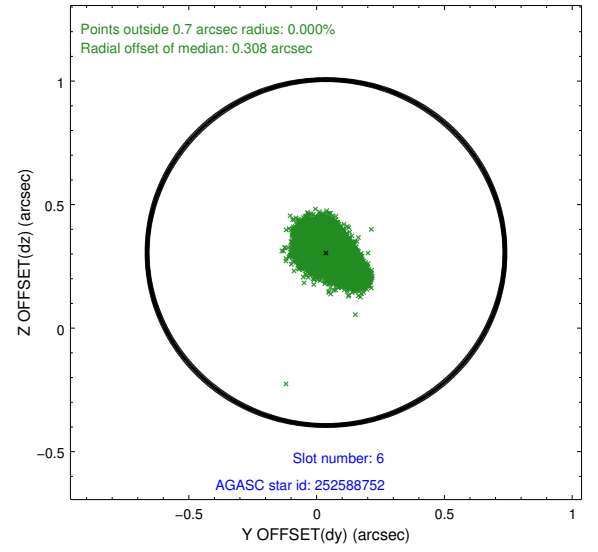
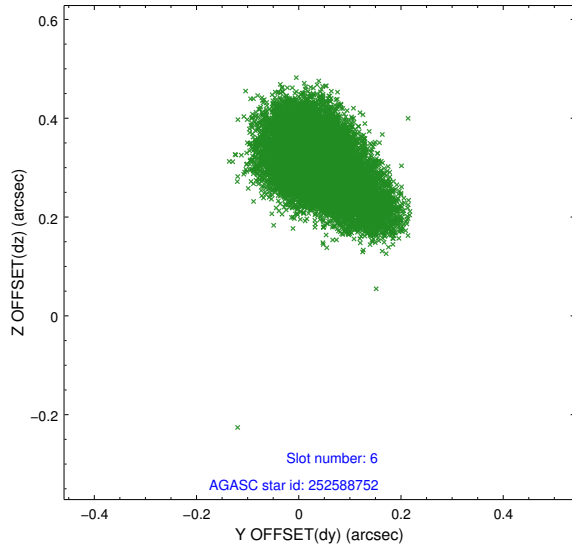
2.4.2 Slot 4



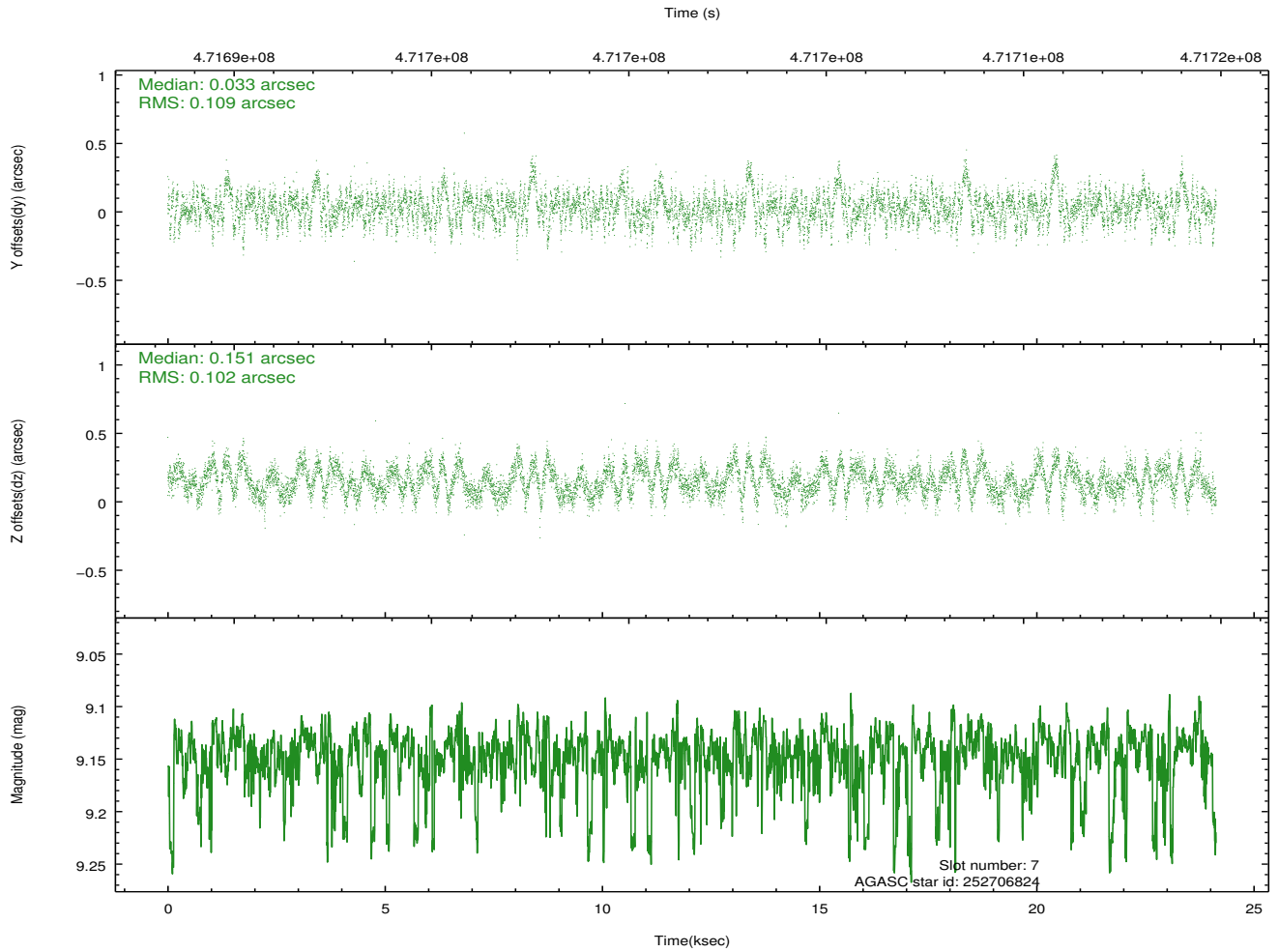
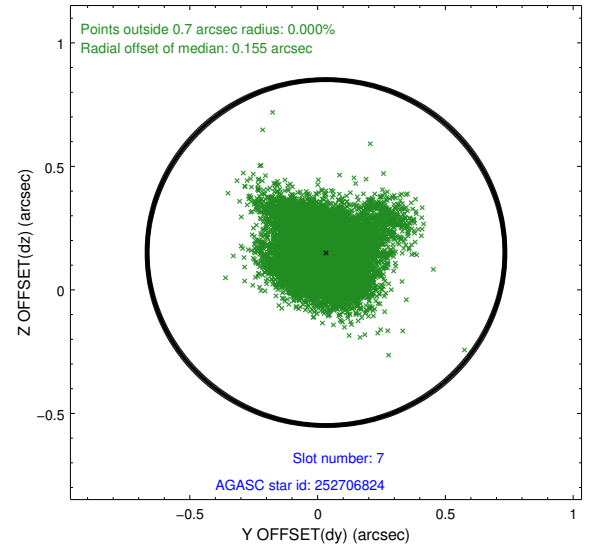
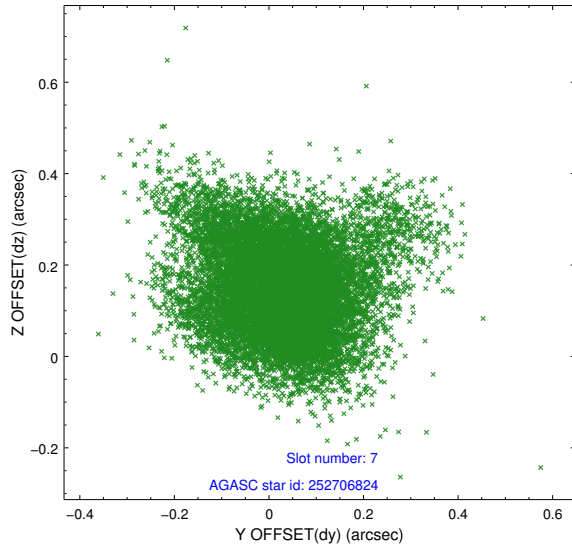
2.4.3 Slot 5



2.4.4 Slot 6

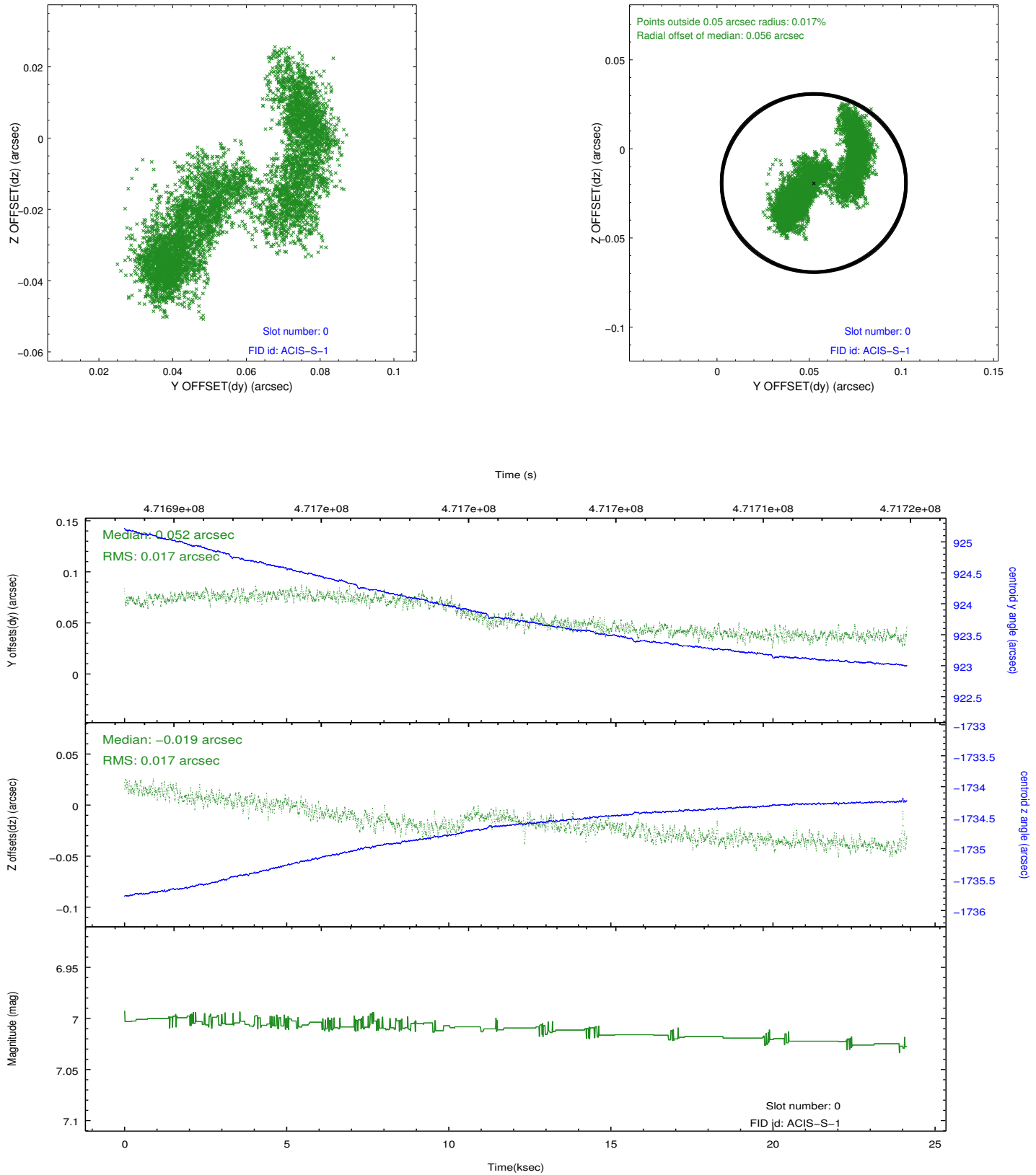


2.4.5 Slot 7

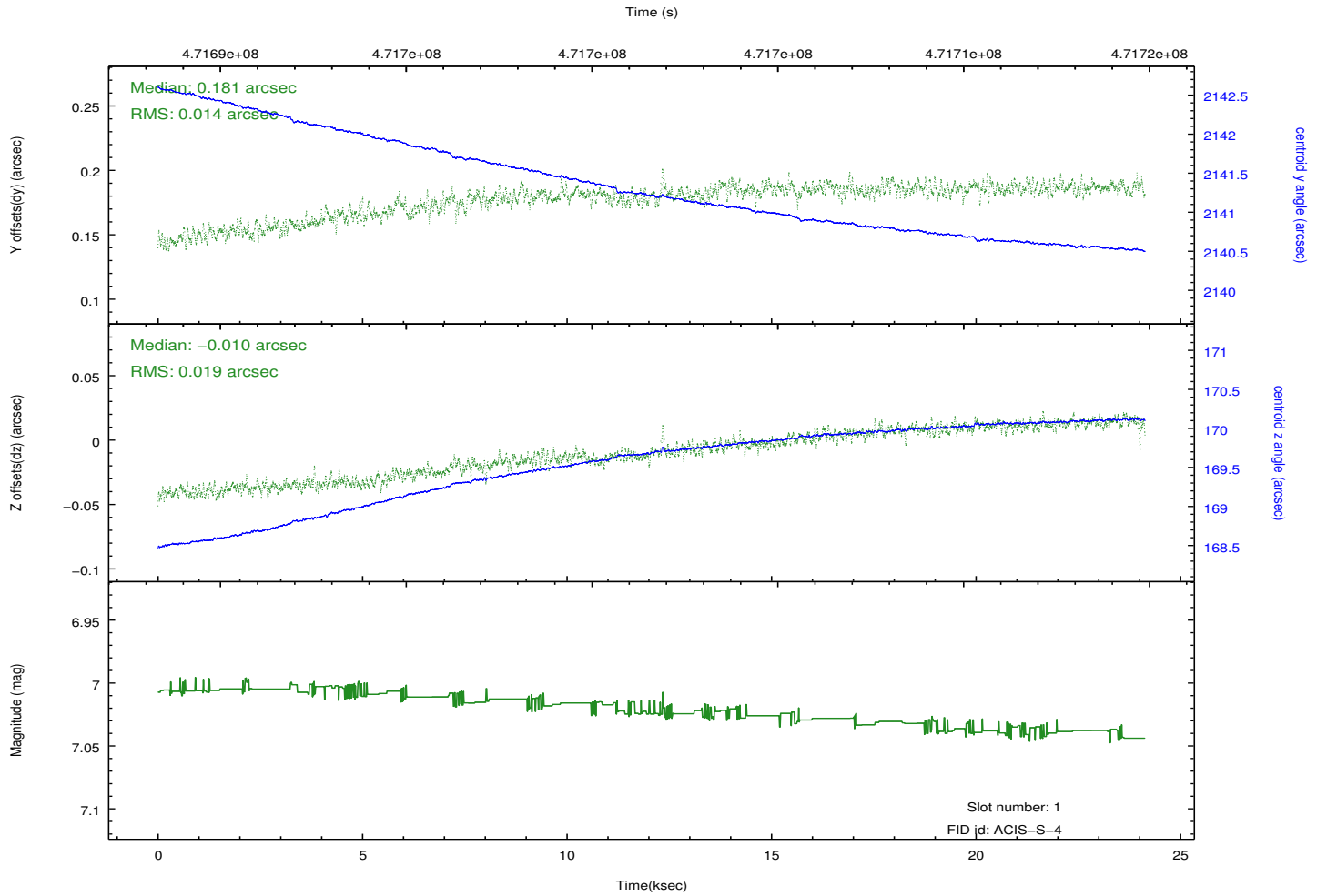
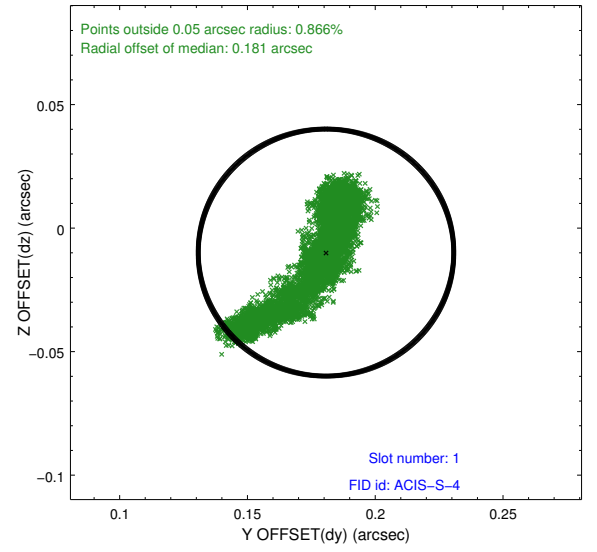
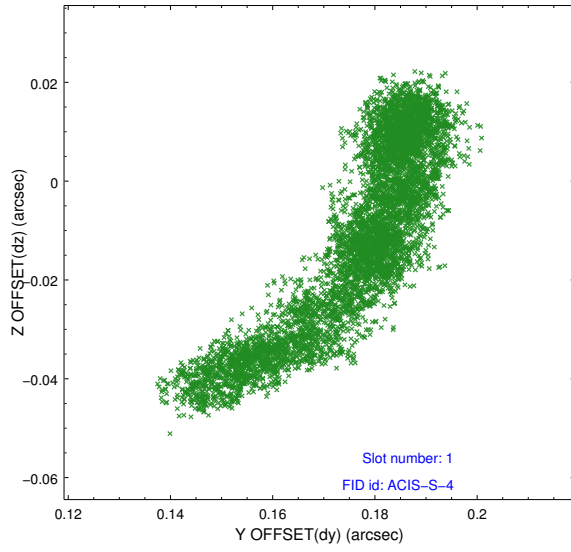


2.5 FID Slots

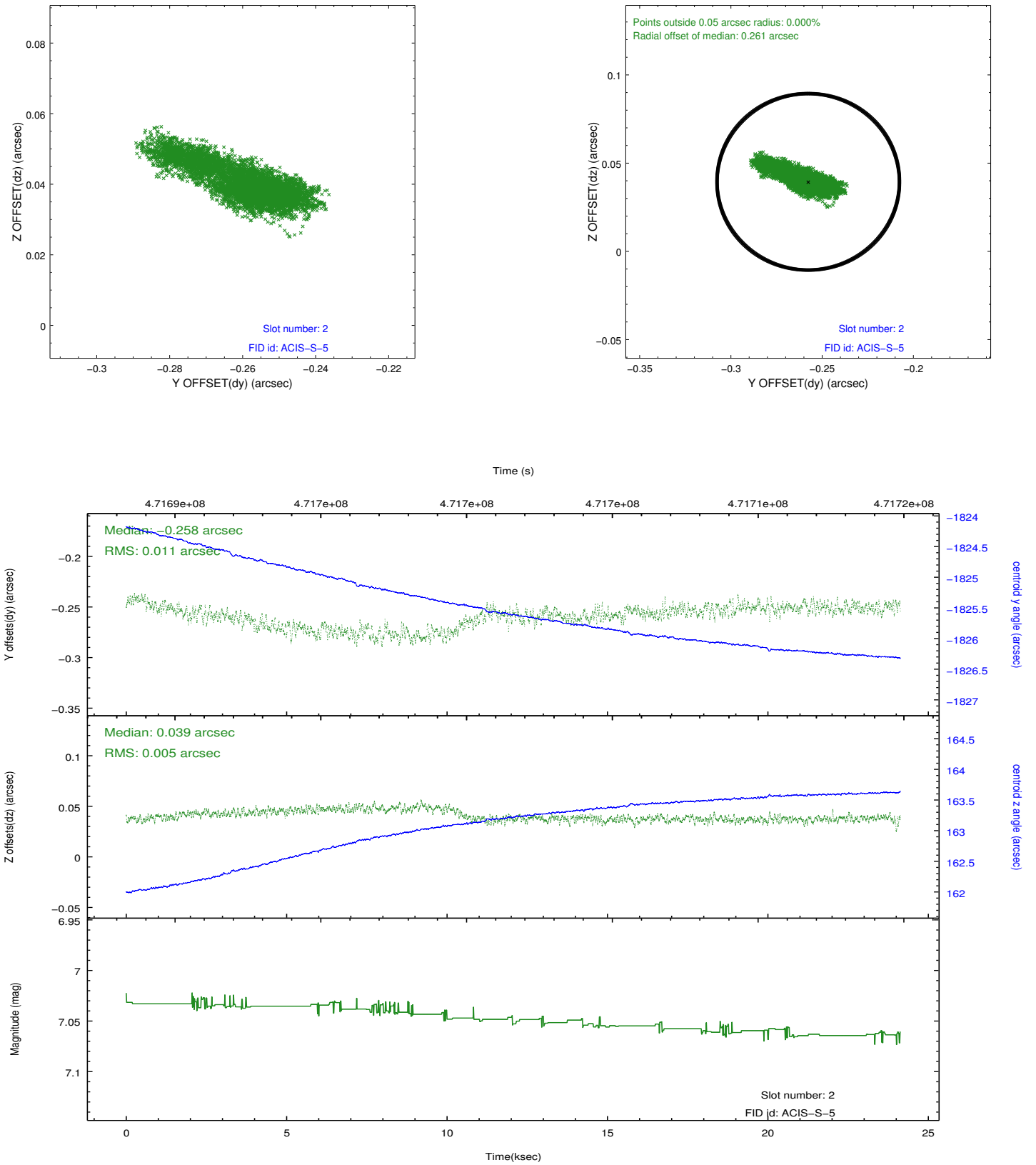
2.5.1 Slot 0



2.5.2 Slot 1



2.5.3 Slot 2



A Summary

A.1 Status

V&V Scientist	Beth Sundheim
V&V Date (YYYY-MM-DD)	2014.12.04
V&V Edition	1
V&V Disposition and Status	OK
V&V Charge Time	24.060000358582

A.2 Comments

These data have been reprocessed with new aspect alignment calibration files that correct small mean offsets (up to 0.4 arcsecs) and improve overall astrometric accuracy. The new calibration was determined using data from the time period being reprocessed and was performed using cross-correlation of X-ray sources with radio and optical counterparts.