

V&V Reference Report

L2 ASCDS Version : 8.5.1.1

Observation 13934 - L2 Version 2
Chandra X-Ray Center

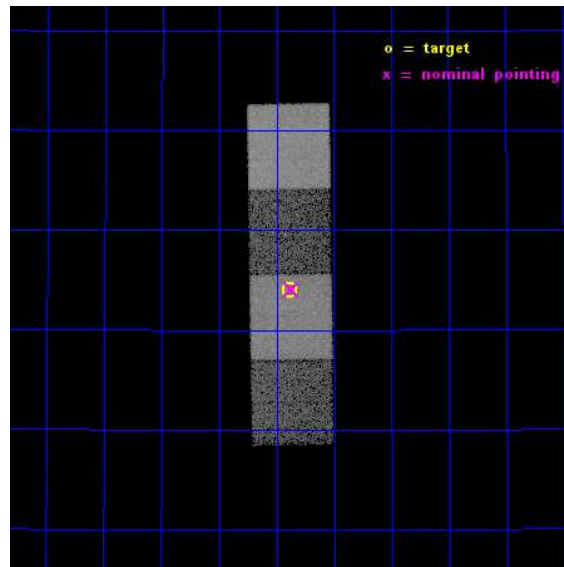
L2 Processing Date : Dec 1 2014

Contents

1	Front	2
2	OBI	3
2.1	OBI	3
2.1.1	Images	3
2.1.2	Bias	3
2.1.3	Parameters	4
2.1.4	Events	4
2.2	Compared Parameters	5
2.3	Aspect	6
2.4	Star Slots	9
2.4.1	Slot 3	9
2.4.2	Slot 4	10
2.4.3	Slot 5	11
2.4.4	Slot 6	12
2.4.5	Slot 7	13
2.5	FID Slots	14
2.5.1	Slot 0	14
2.5.2	Slot 1	15
2.5.3	Slot 2	16
A	Summary	17
A.1	Status	17
A.2	Comments	17

1 Front

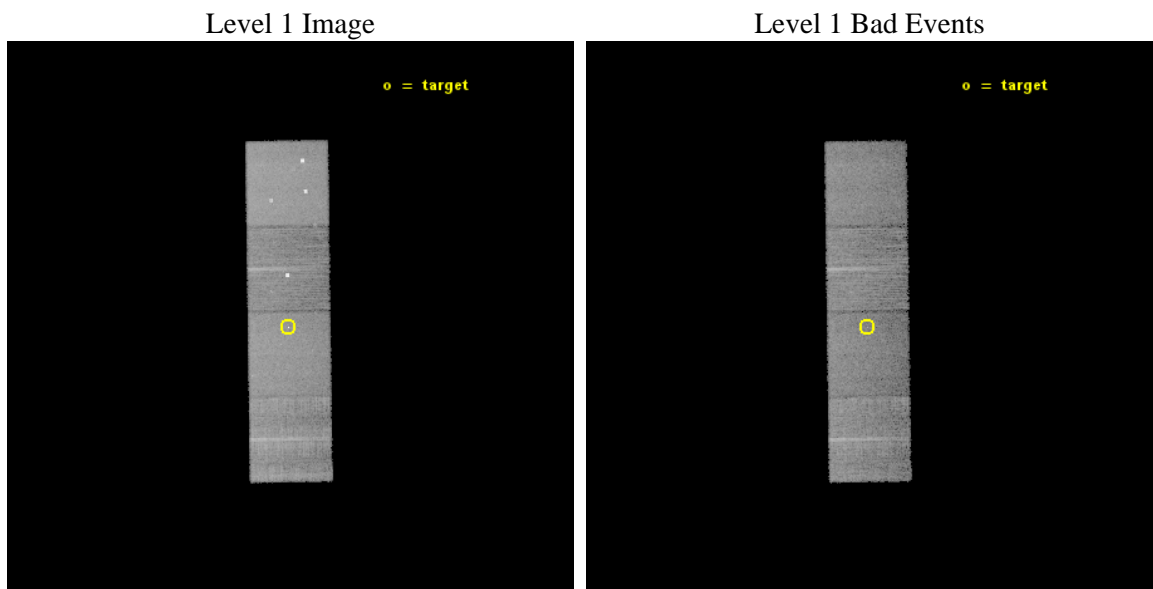
seq_num	702658	Sequence number
obs_id	13934	Observation id
title	Probing the High End of the Quasar Black Hole Mass Function	Propos
observer	Dr. Martin Elvis	Principal investigator
object	SDSS J123253.03+364359.1	Source name
dtcycle	0	
cycle	P	events from which exps? Prim/Second/Both
ra_targ	188.220833	Observer's specified target RA [deg]
dec_targ	36.733111	Observer's specified target Dec [deg]
ra_nom	188.21768190572	Nominal RA [deg]
dec_nom	36.734812579469	Nominal Dec [deg]
roll_nom	89.176269800081	Nominal Roll [deg]
revision	2	Processing version of data
ontime	16267.531267643	Sum of GTIs [s]
livetime	16054.983995649	Livetime [s]
ontime5	16267.49022764	Sum of GTIs [s]
ontime6	16264.308127284	Sum of GTIs [s]
ontime7	16267.531267643	Sum of GTIs [s]
ontime8	16267.408147633	Sum of GTIs [s]
l2events	138264	Number of level 2 events



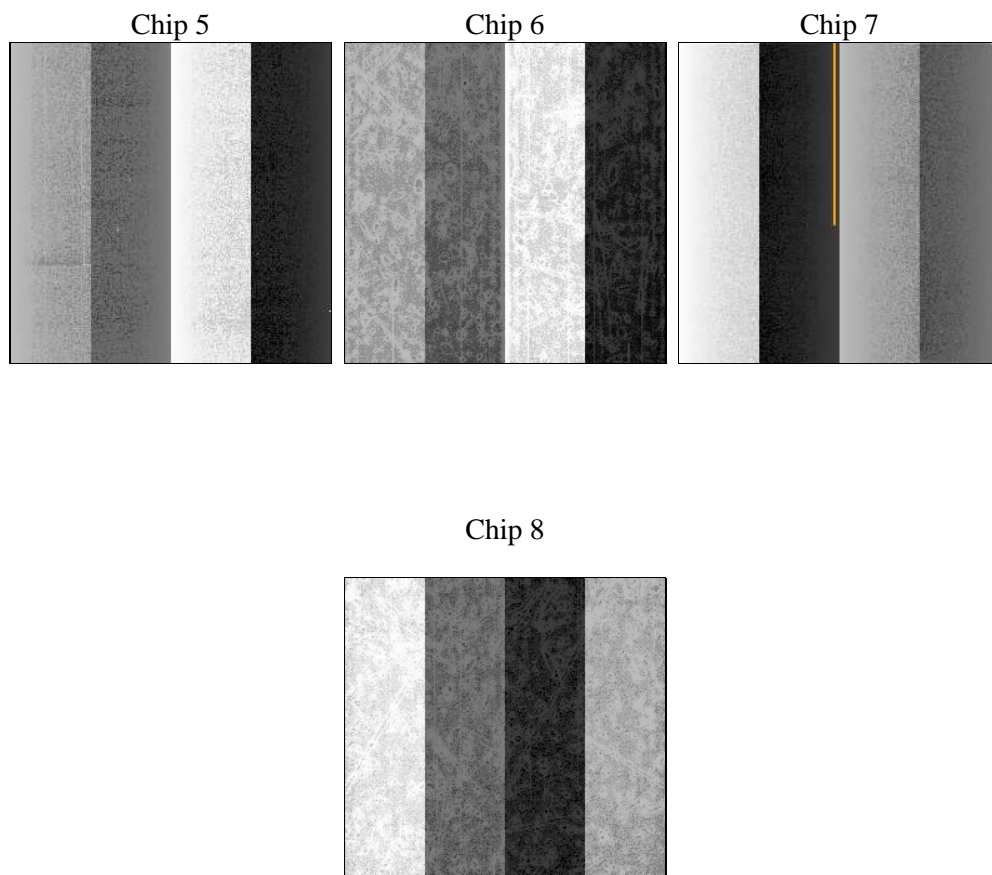
2 OBI

2.1 OBI

2.1.1 Images



2.1.2 Bias



2.1.3 Parameters

obi_num	0	Obi number	sched_exp_time	16200.000000	[s] Scheduled observation exposure time
ascdsver	10.3	Processing system revision	ontime	16267.531267643	Sum of GTIs [s]
caldsver	4.6.4	 	ontime5	16267.49022764	Sum of GTIs [s]
date	2014-12-01T03:27:49	Date and time of file creation	ontime6	16264.308127284	Sum of GTIs [s]
revision	2	Processing version of data	ontime7	16267.531267643	Sum of GTIs [s]
			ontime8	16267.408147633	Sum of GTIs [s]
			l1events	486570	Number of level 1 events

2.1.4 Events

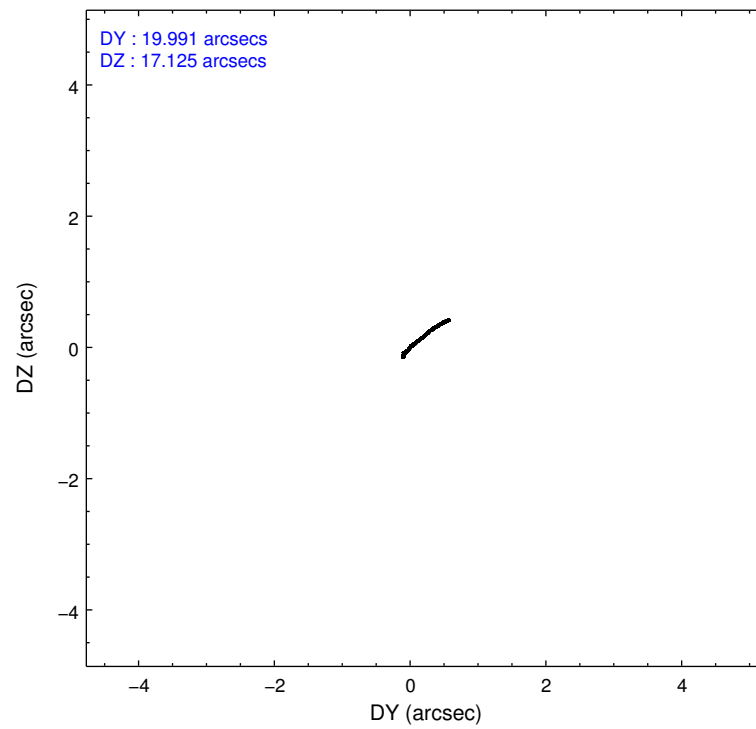
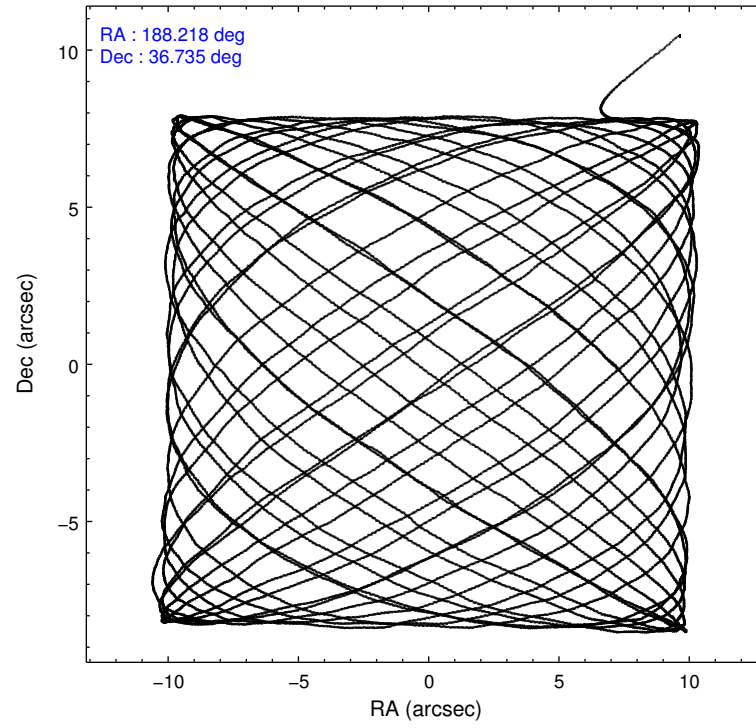
	ccd 5	ccd 6	ccd 7	ccd 8
level 1 events	152296	94337	121991	117946
rejected events	75003	78509	68740	87106
rejected %	49%	83%	56%	73%

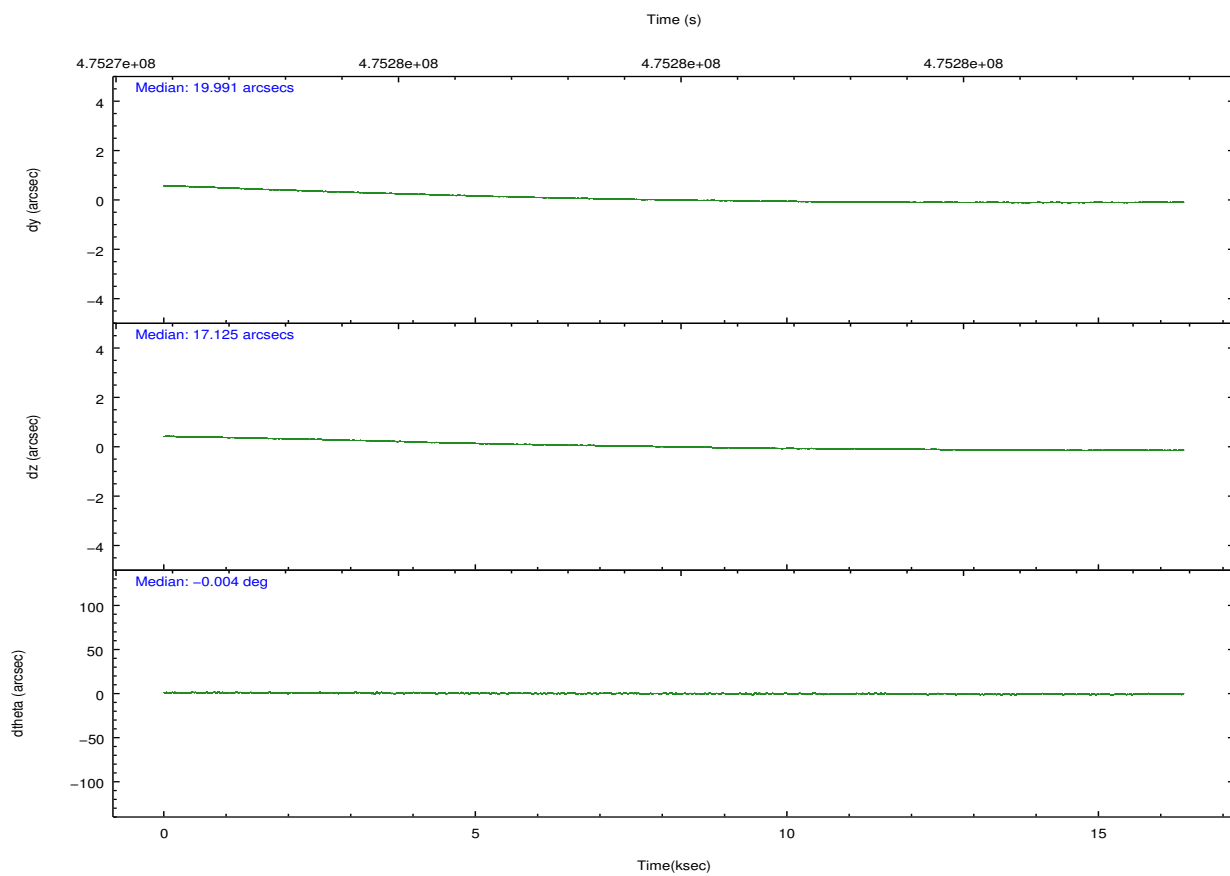
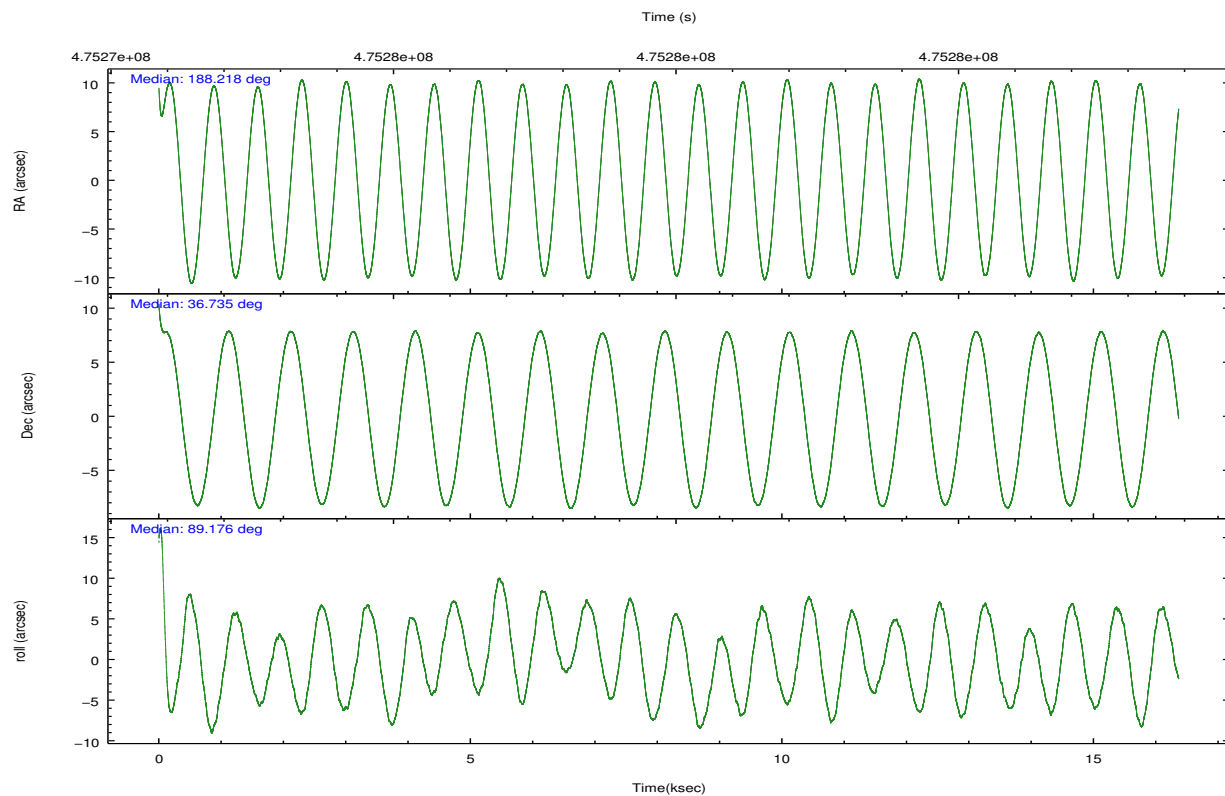
	ccd 5	ccd 6	ccd 7	ccd 8
grade 0 events	10036	8646	4838	8753
	6%	9%	3%	7%
grade 1 events	272	81	153	80
	0%	0%	0%	0%
grade 2 events	24352	2392	10915	7339
	15%	2%	8%	6%
grade 3 events	2286	1119	4459	3426
	1%	1%	3%	2%
grade 4 events	2258	1177	4309	3278
	1%	1%	3%	2%
grade 5 events	10622	4563	12195	6538
	6%	4%	9%	5%
grade 6 events	38383	2503	28751	8051
	25%	2%	23%	6%
grade 7 events	64087	73856	56371	80481
	42%	78%	46%	68%

2.2 Compared Parameters

Parameter	Planned	Actual	Parameter	Planned	Actual
Instrument	ACIS	ACIS	Obspar format version number	7	7
Detector	ACIS-5678	ACIS-5678	Obspar file type	PREDICTED	ACTUAL
Grating	NONE	NONE	Obspar update status	NONE	UPDATED
Data mode	FAINT	FAINT	Number of optional ACIS chips dropped	0	0
Observation mode	POINTING	POINTING	On-chip summing requested	N	N
[deg] Pointing RA	188.234709	188.217681905722	Subarray requested	NONE	NONE
[deg] Pointing Dec	36.711092	36.73481257946881	Alternating exposures requested	N	N
[deg] Pointing Roll	89.009452	89.17626980008059	[s] Primary exposure time	0.000000	3.1
[mm] SIM focus pos	-0.684267	-0.6828225247311905			
[mm] SIM defocus	0	0.001444936568705701			
[mm] SIM translation stage pos	-190.132523	-190.1425803651734			
[mm] SIM translation stage offset	0	0.01005778216563158			
[s] Observation start time (MET)	475271847.184000	475270853.36786			
Observation start date	2013-01-22T19:56:20	2013-01-22T19:40:53			
[s] Observation end time (MET)	475288047.184000	475288659.15632			
Observation end date	2013-01-23T00:26:20	2013-01-23T00:37:39			
Read mode	TIMED	TIMED			

2.3 Aspect



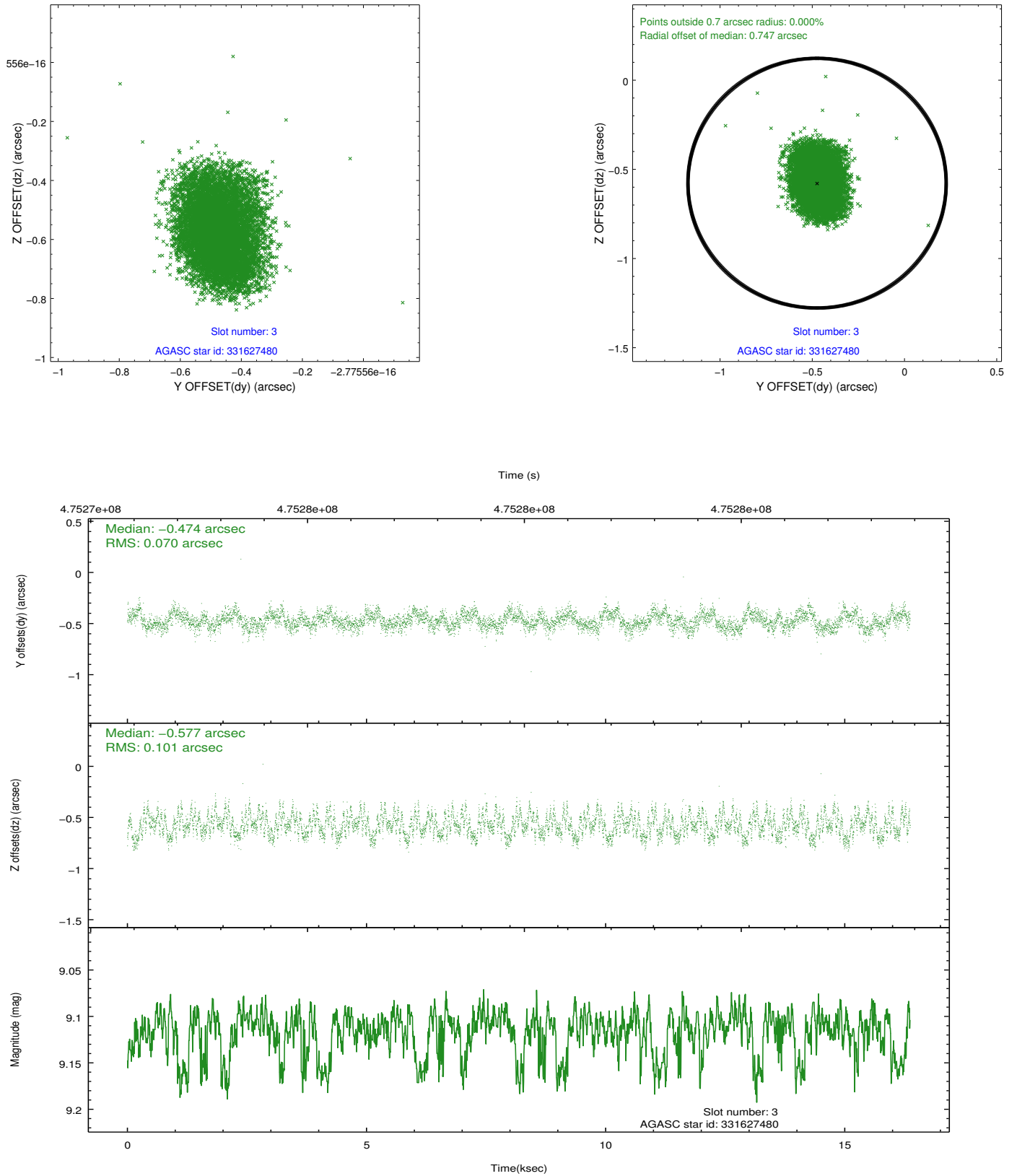


Slot Statistics

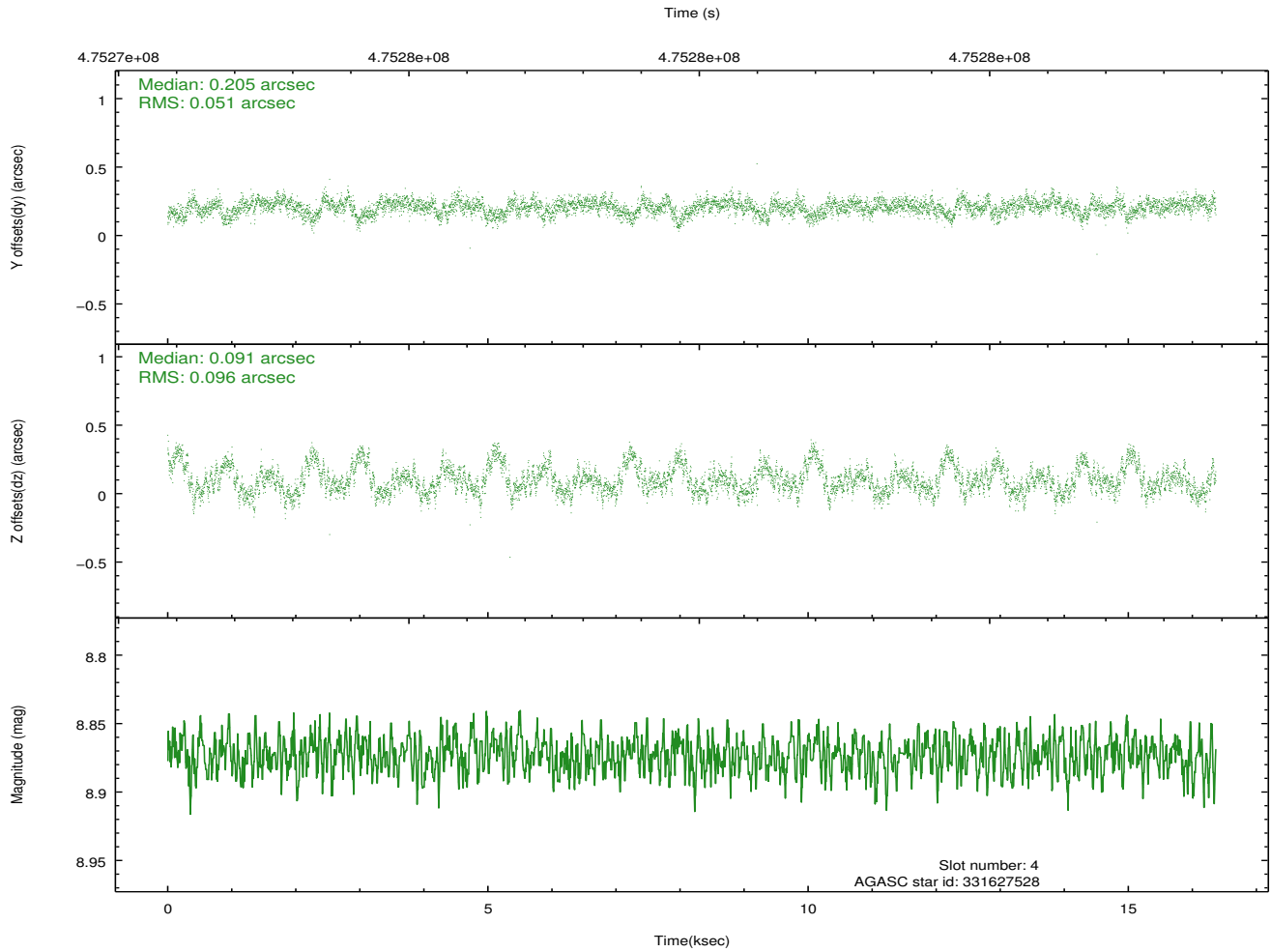
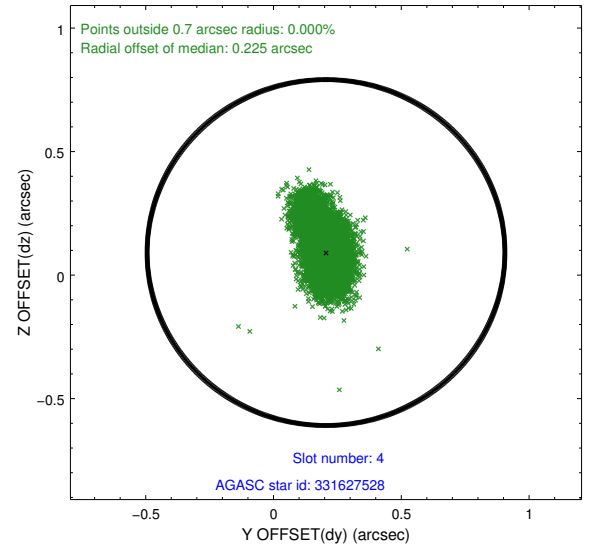
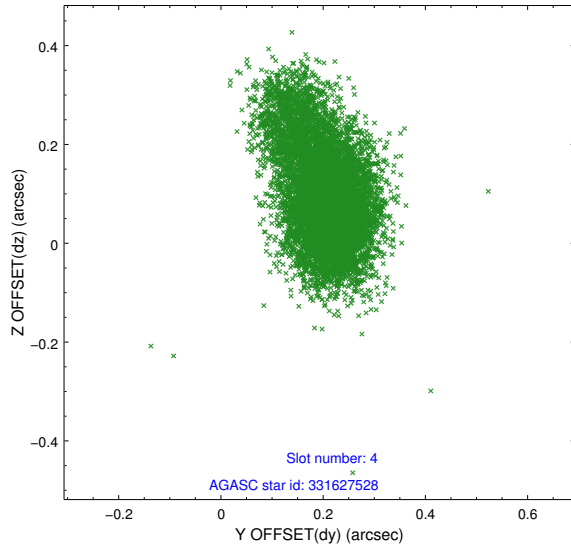
slot	status	used	id	mag	n_pts	med_dy	med_dz	dr1	dr2	ra	dec	mean_y	mean_z
0	FID		ACIS-S-1	7.11	3992	0.034	-0.052	0.010	0.016	0.000000	0.000000	922.85	-1734.26
1	FID		ACIS-S-4	7.12	3992	0.210	0.025	0.010	0.017	0.000000	0.000000	2140.61	169.69
2	FID		ACIS-S-5	7.15	3992	-0.270	0.040	0.006	0.012	0.000000	0.000000	-1825.96	163.65
3	GUIDE	used	331627480	9.11	7966	-0.474	-0.577	0.133	0.207	188.130840	37.045595	1198.93	318.83
4	GUIDE	used	331627528	8.87	7983	0.205	0.091	0.109	0.205	188.999651	36.257832	-1584.02	-2247.90
5	GUIDE	used	331629176	9.19	7953	-0.072	0.484	0.113	0.182	188.723451	36.585834	-422.74	-1419.96
6	GUIDE	used	331630168	8.27	7982	0.084	-0.057	0.089	0.135	188.747385	36.325252	-1359.43	-1509.53
7	GUIDE	used	331630104	9.42	7979	0.259	0.053	0.120	0.187	188.818178	36.126499	-2069.58	-1731.95

2.4 Star Slots

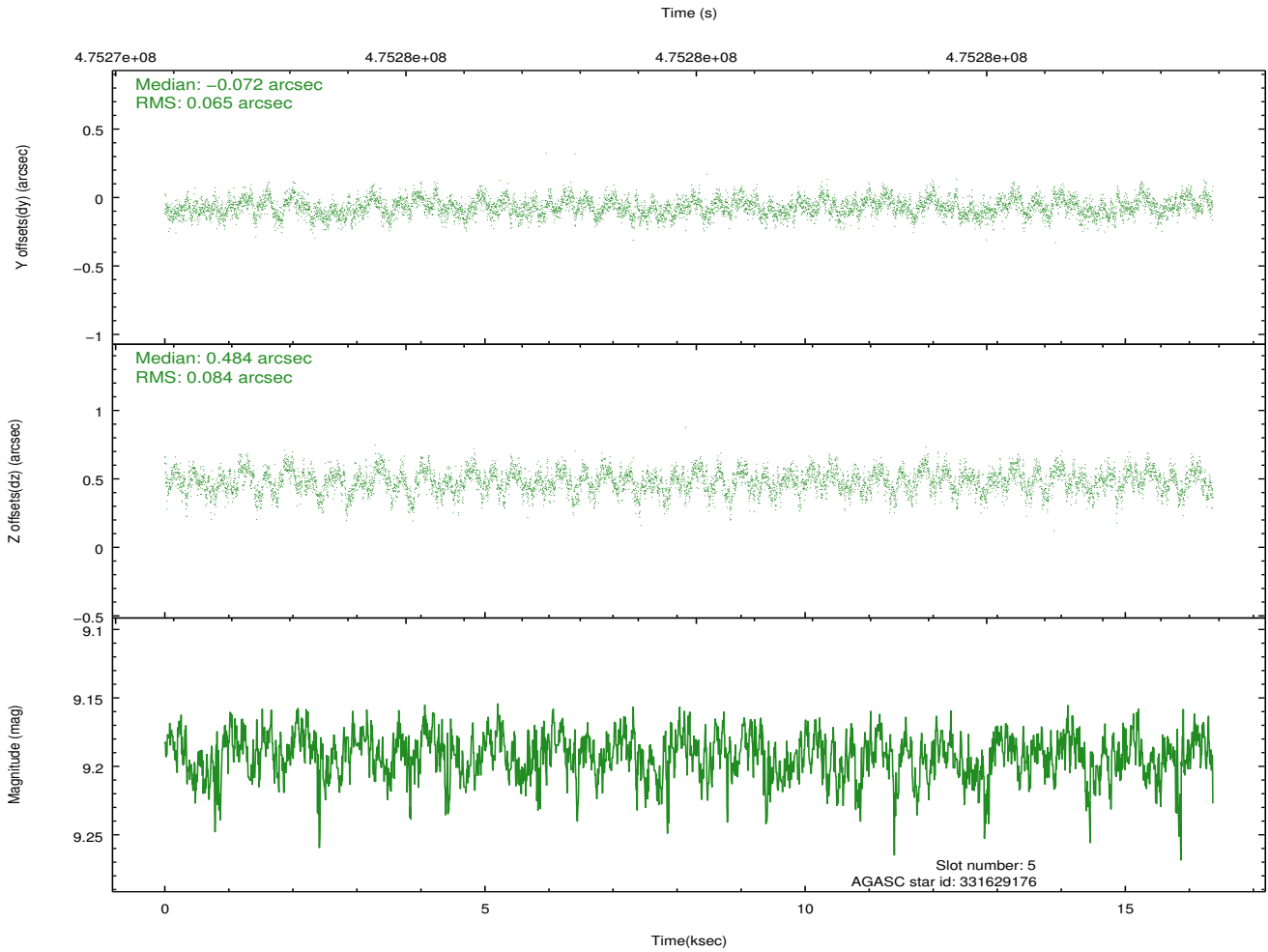
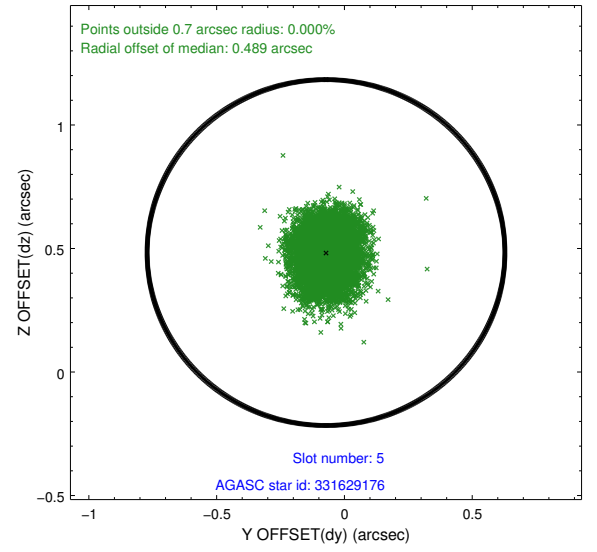
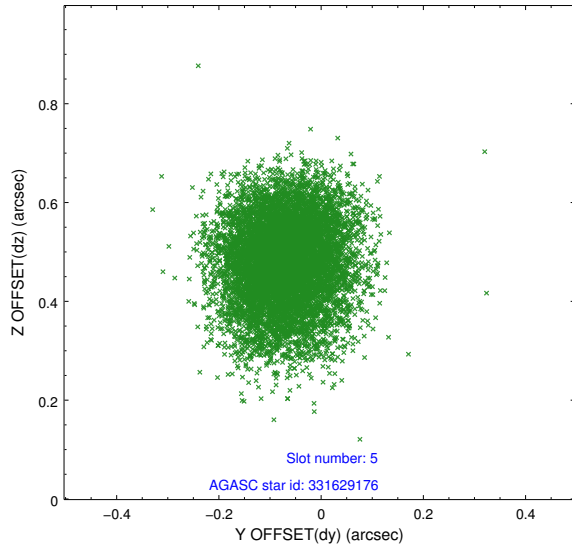
2.4.1 Slot 3



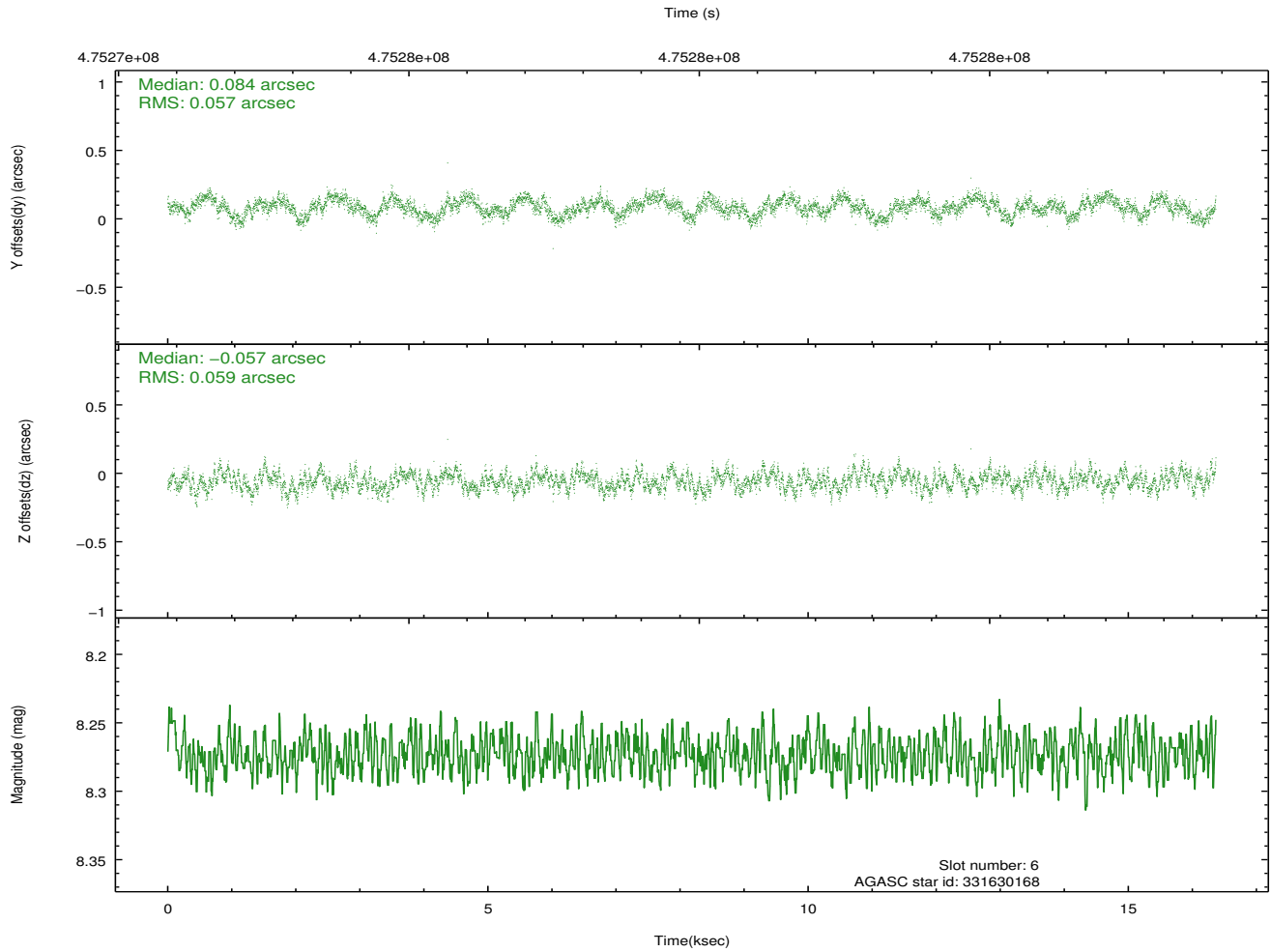
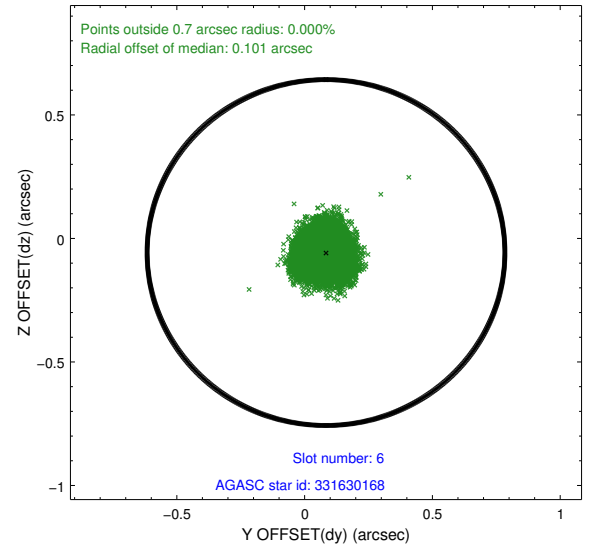
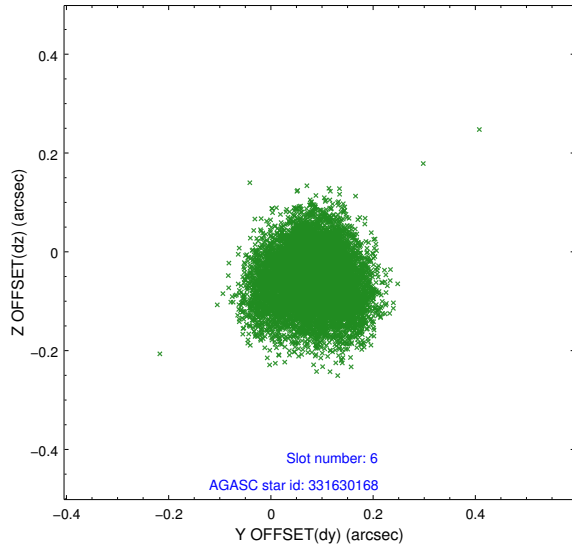
2.4.2 Slot 4



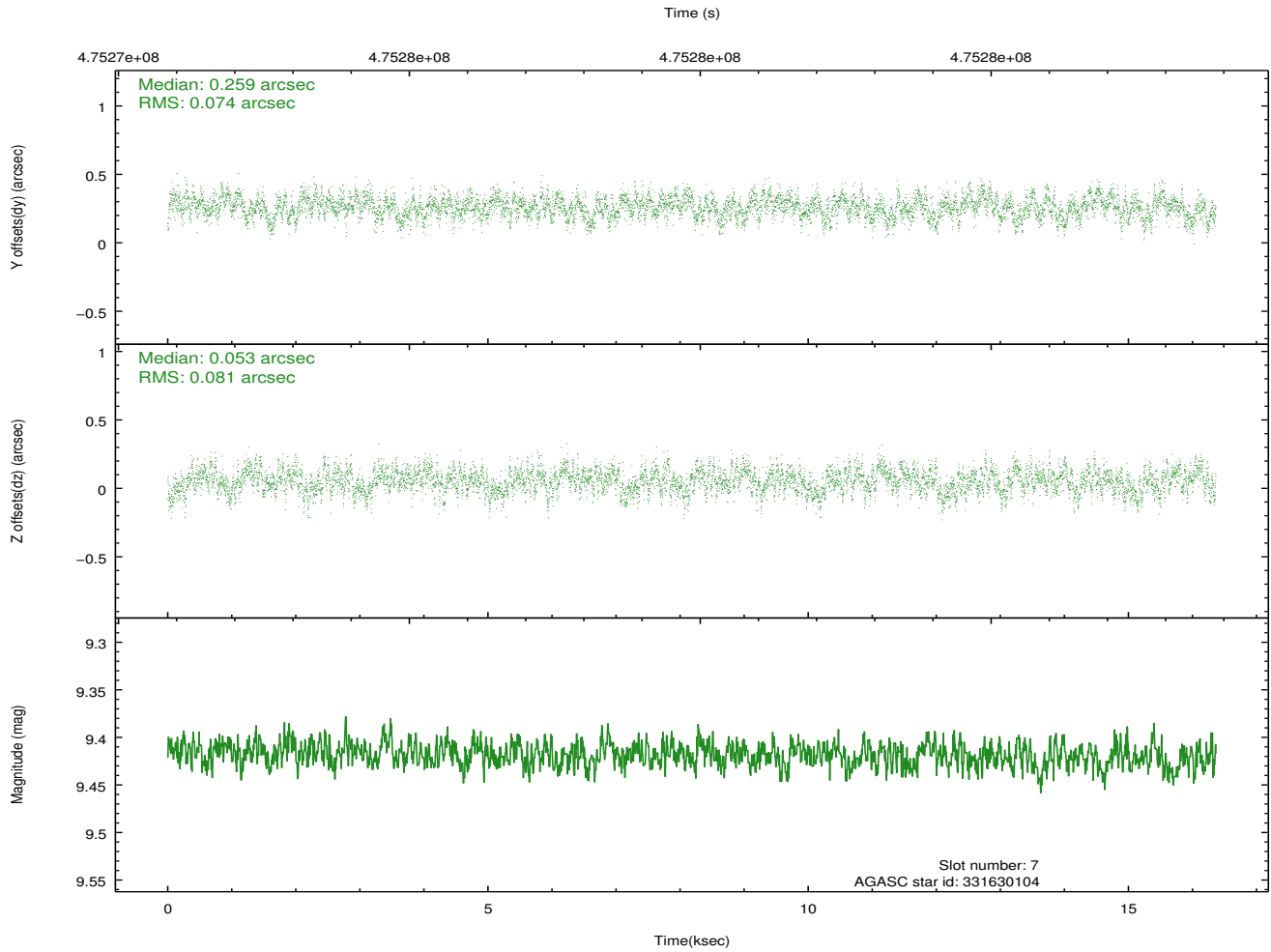
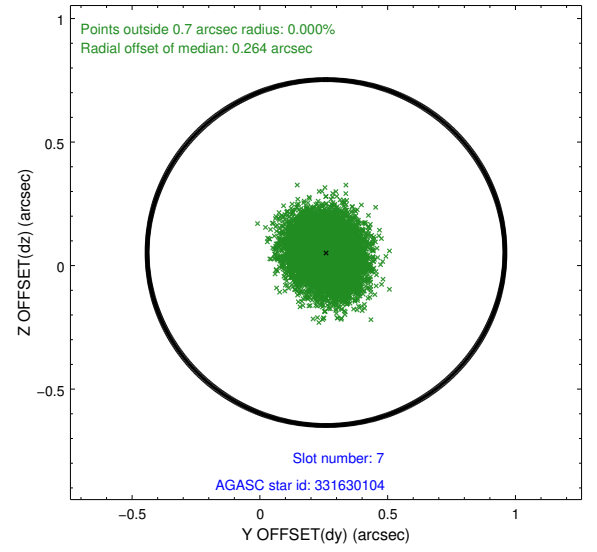
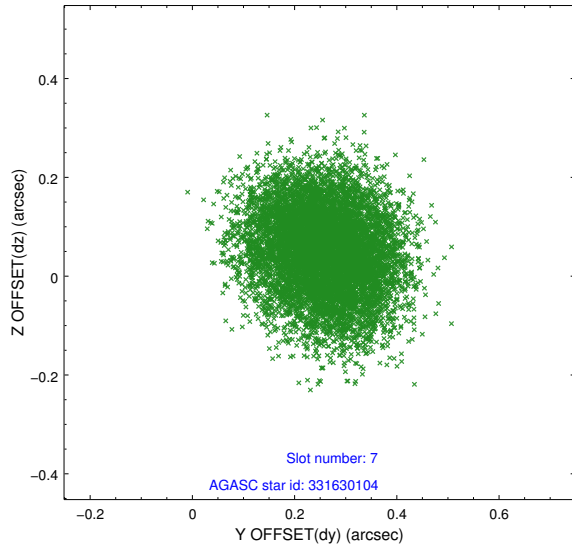
2.4.3 Slot 5



2.4.4 Slot 6

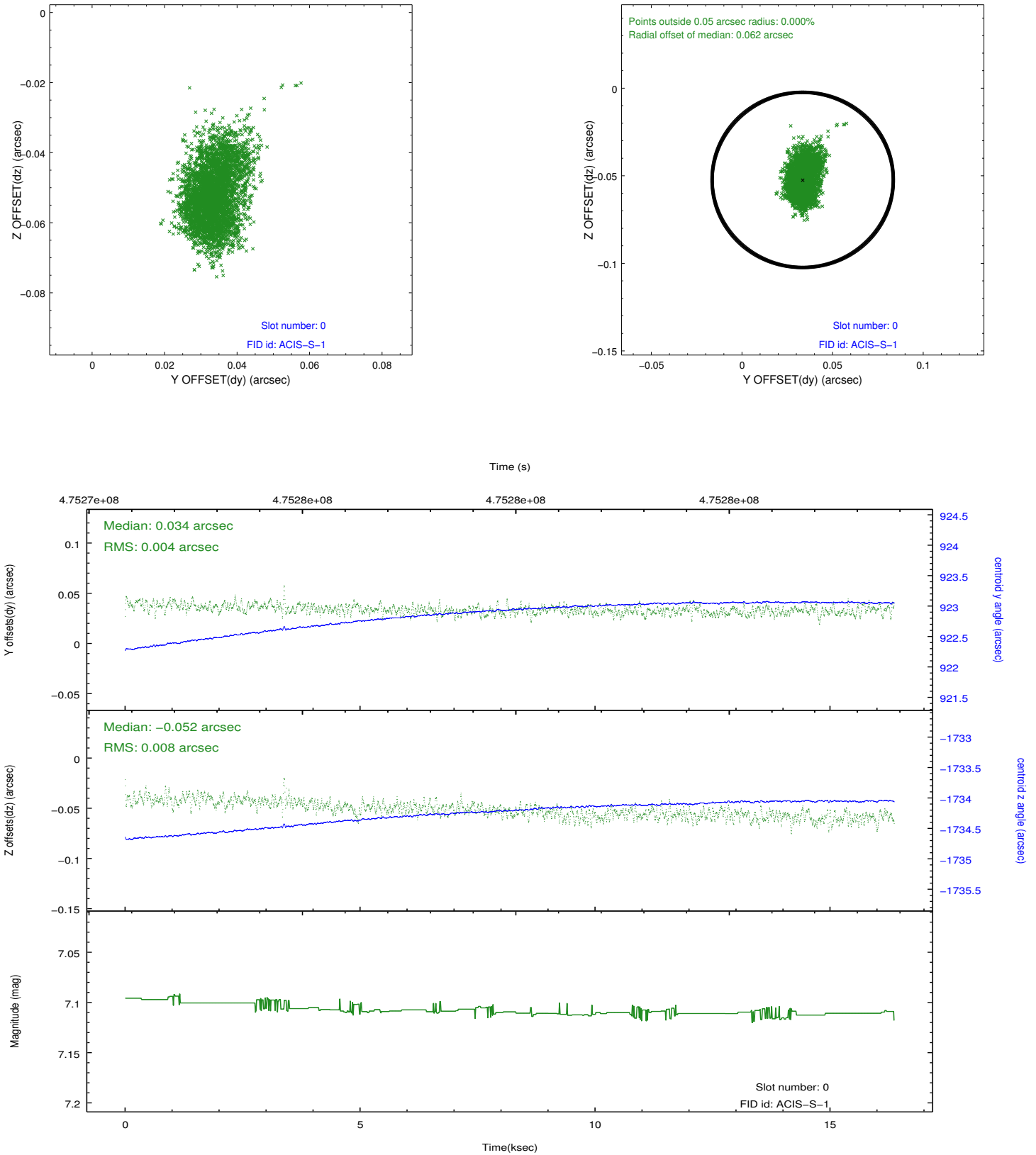


2.4.5 Slot 7

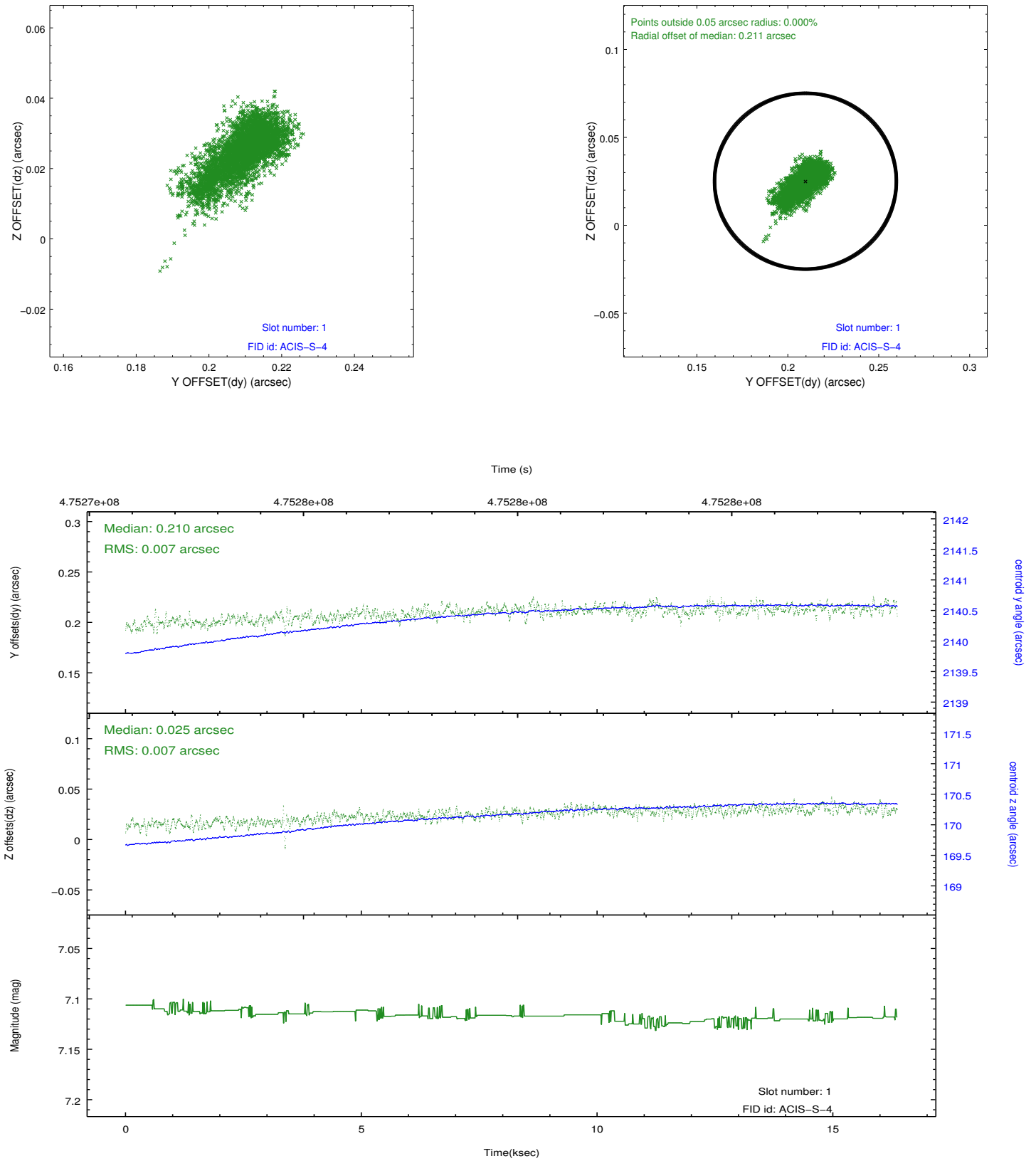


2.5 FID Slots

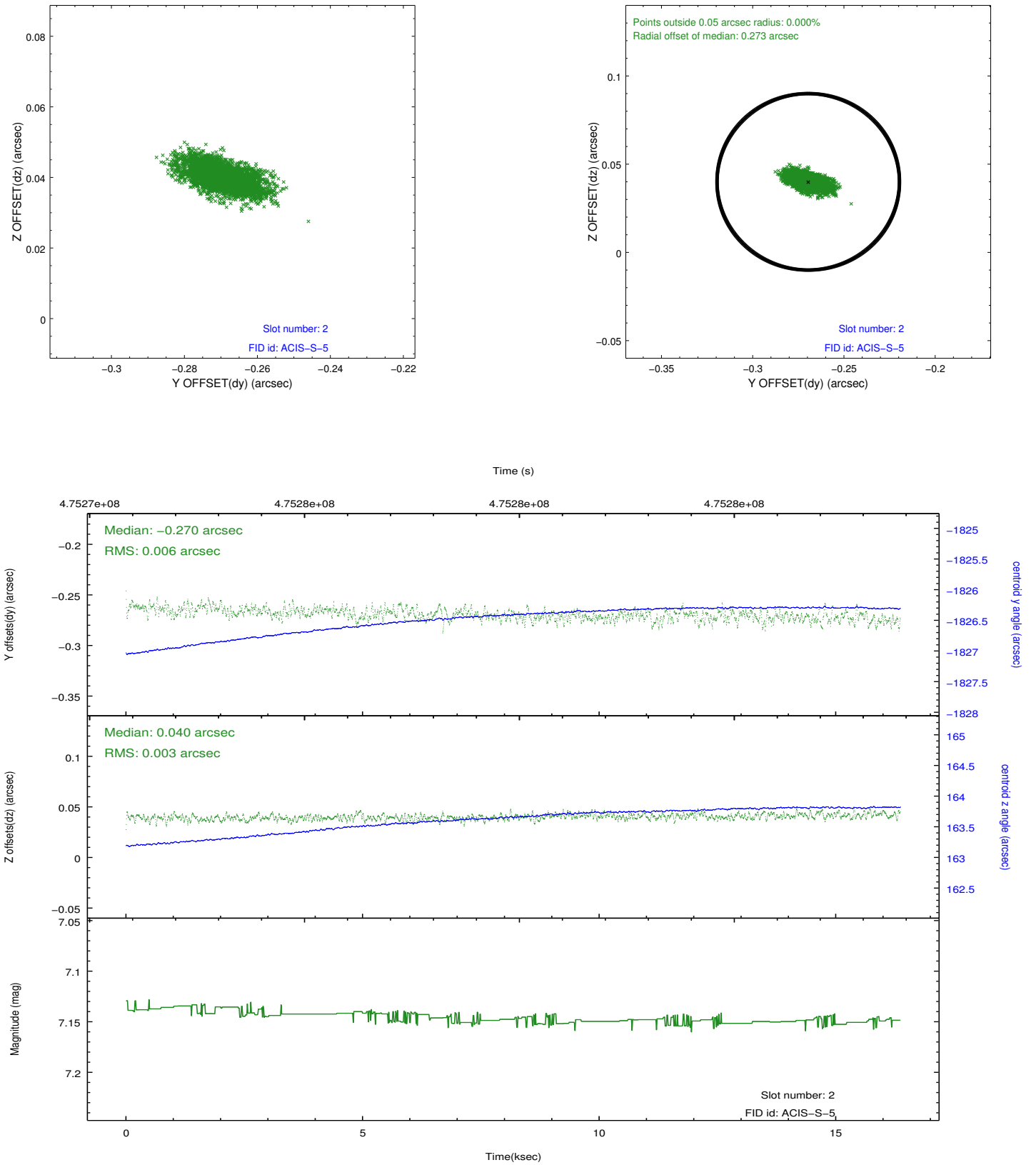
2.5.1 Slot 0



2.5.2 Slot 1



2.5.3 Slot 2



A Summary

A.1 Status

V&V Scientist	Jen Lauer
V&V Date (YYYY-MM-DD)	2014.12.08
V&V Edition	1
V&V Disposition and Status	OK
V&V Charge Time	16.267531267643

A.2 Comments

These data have been reprocessed with new aspect alignment calibration files that correct small mean offsets (up to 0.4 arcsecs) and improve overall astrometric accuracy. The new calibration was determined using data from the time period being reprocessed and was performed using cross-correlation of X-ray sources with radio and optical counterparts.