

# V&V Reference Report

## L2 ASCDS Version : 8.4.3

Observation 13932 - L2 Version 1  
Chandra X-Ray Center

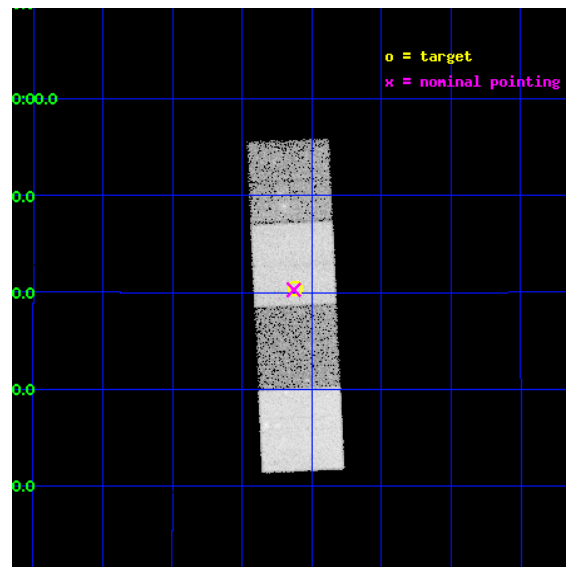
L2 Processing Date : Feb 26 2012

## Contents

<b>1</b>	<b>Front</b>	<b>2</b>
<b>2</b>	<b>OBI</b>	<b>3</b>
2.1	OBI . . . . .	3
2.1.1	Images . . . . .	3
2.1.2	Bias . . . . .	3
2.1.3	Parameters . . . . .	4
2.1.4	Events . . . . .	4
2.2	Compared Parameters . . . . .	5
2.3	Aspect . . . . .	6
2.4	Star Slots . . . . .	9
2.4.1	Slot 3 . . . . .	9
2.4.2	Slot 4 . . . . .	10
2.4.3	Slot 5 . . . . .	11
2.4.4	Slot 6 . . . . .	12
2.4.5	Slot 7 . . . . .	13
2.5	FID Slots . . . . .	14
2.5.1	Slot 0 . . . . .	14
2.5.2	Slot 1 . . . . .	15
2.5.3	Slot 2 . . . . .	16
<b>A</b>	<b>Summary</b>	<b>17</b>
A.1	Status . . . . .	17
A.2	Comments . . . . .	17

# 1 Front

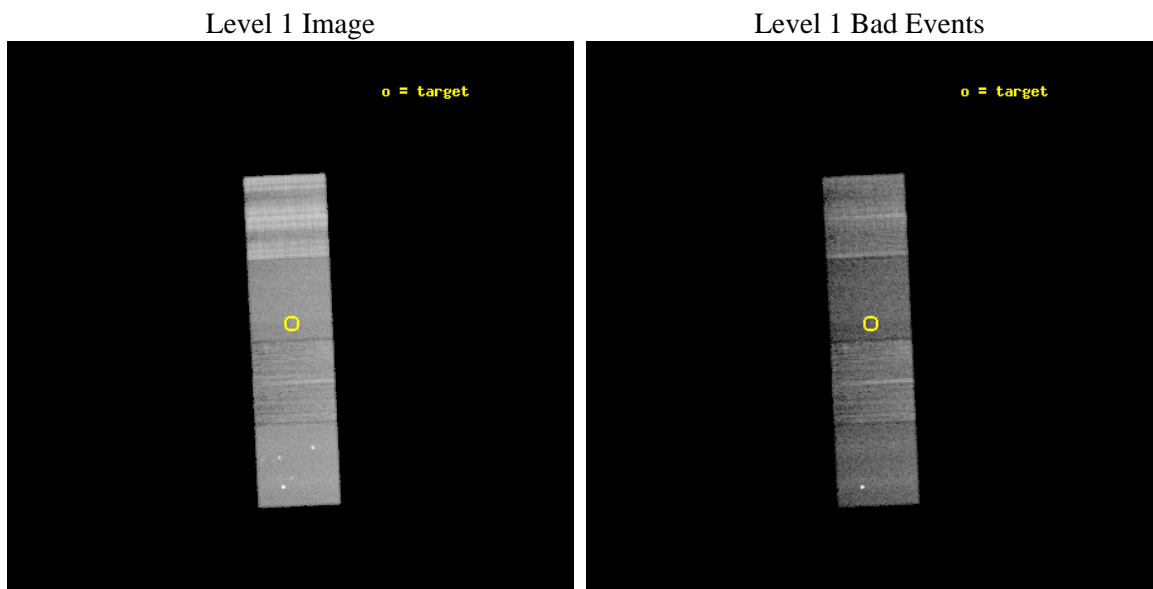
seq_num	702656	Sequence number
obs_id	13932	Observation id
title	Probing the High End of the Quasar Black Hole Mass Function	Propos
observer	Dr. Martin Elvis	Principal investigator
object	SDSS J080137.06+134022.7	Source name
dtcycle	0	&#160
cycle	P	events from which exps? Prim/Second/Both
ra_targ	120.404583	Observer's specified target RA [deg]
dec_targ	13.673	Observer's specified target Dec [deg]
ra_nom	120.40713584811	Nominal RA [deg]
dec_nom	13.671211247529	Nominal Dec [deg]
roll_nom	267.30112183095	Nominal Roll [deg]
revision	1	Processing version of data
ontime	13364.100102782	Sum of GTIs [s]
livetime	13189.488296432	Livetime [s]
ontime5	13364.100102782	Sum of GTIs [s]
ontime6	13364.100102782	Sum of GTIs [s]
ontime7	13364.100102782	Sum of GTIs [s]
ontime8	13364.100102782	Sum of GTIs [s]
l2events	137565	Number of level 2 events



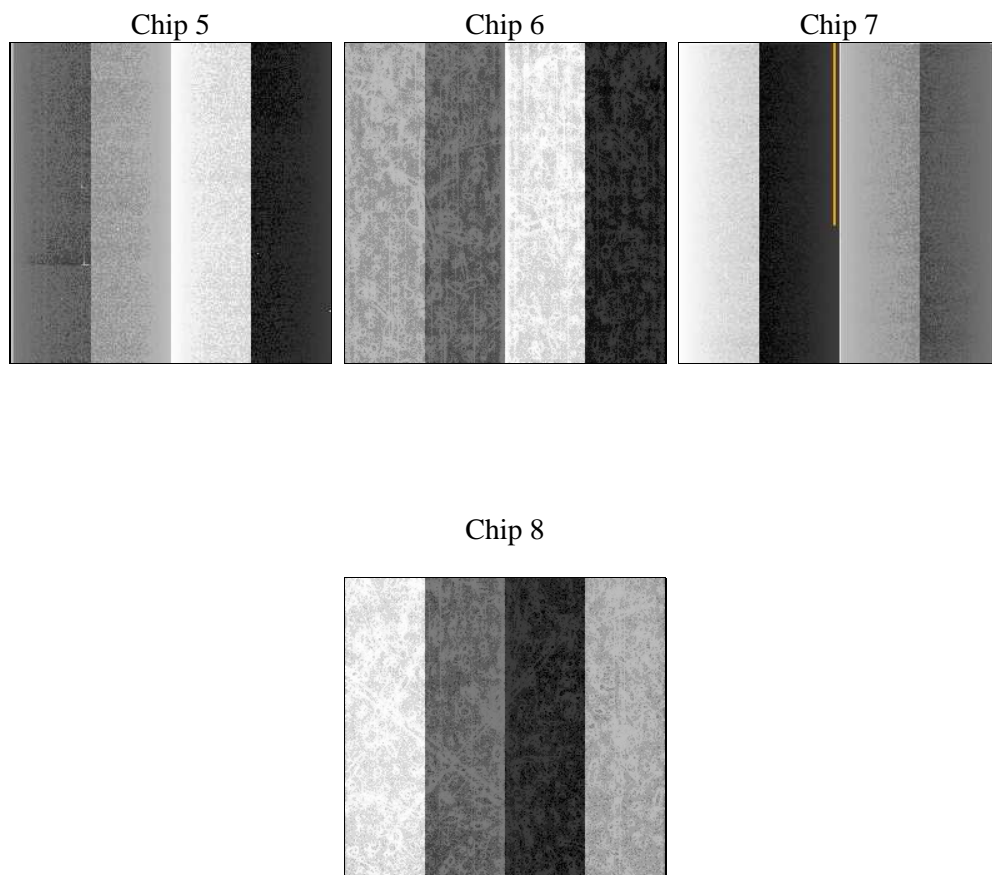
## 2 OBI

### 2.1 OBI

#### 2.1.1 Images



#### 2.1.2 Bias



### 2.1.3 Parameters

obi_num	0	Obi number	sched_exp_time	13300.000000	[s] Scheduled observation exposure time
ascdsver	8.4.3	Processing system revision	ontime	13364.100102782	Sum of GTIs [s]
caldsver	4.4.8	&#160	ontime5	13364.100102782	Sum of GTIs [s]
date	2012-02-26T18:26:11	Date and time of file creation	ontime6	13364.100102782	Sum of GTIs [s]
revision	1	Processing version of data	ontime7	13364.100102782	Sum of GTIs [s]
			ontime8	13364.100102782	Sum of GTIs [s]
			l1events	651032	Number of level 1 events

### 2.1.4 Events

	ccd 5	ccd 6	ccd 7	ccd 8
level 1 events	151240	113031	114725	272036
rejected events	77982	100017	62957	112670
rejected %	51%	88%	54%	41%

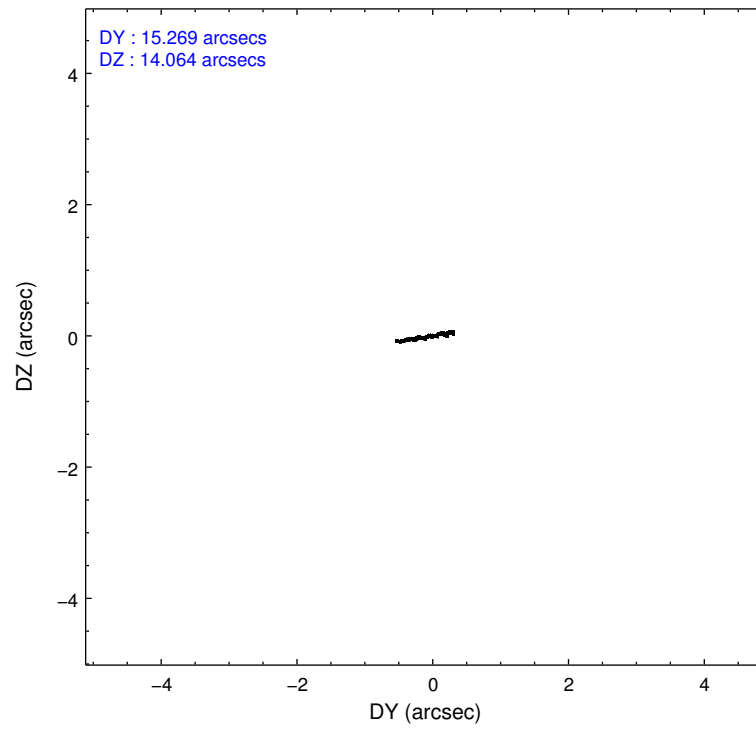
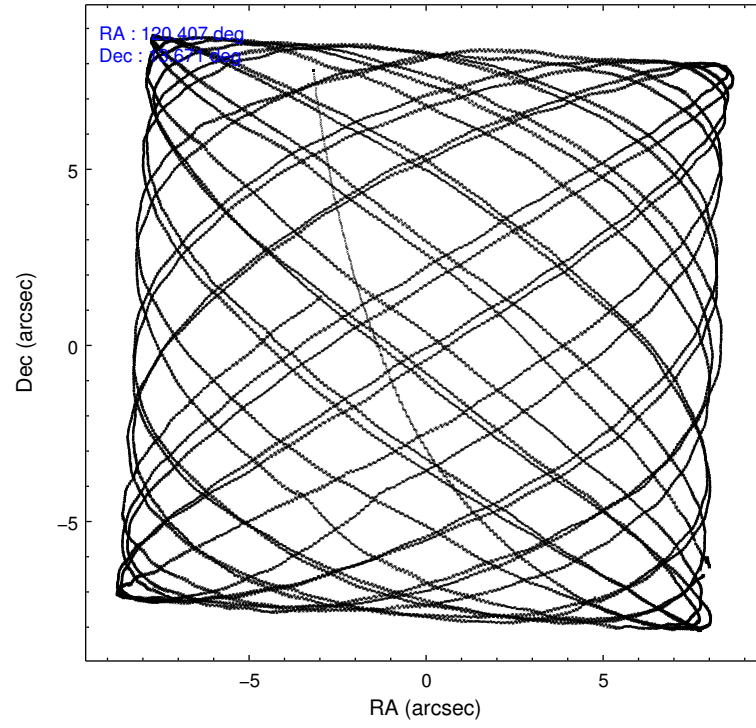
	ccd 5	ccd 6	ccd 7	ccd 8
grade 0 events	8710	5123	5023	47679
	5%	4%	4%	17%
grade 1 events	326	76	209	426
	0%	0%	0%	0%
grade 2 events	23613	3514	11561	22811
	15%	3%	10%	8%
grade 3 events	3155	1052	4501	28790
	2%	0%	3%	10%
grade 4 events	3025	984	4550	25613
	2%	0%	3%	9%
grade 5 events	11173	3975	11414	7556
	7%	3%	9%	2%
grade 6 events	34823	2354	26164	34620
	23%	2%	22%	12%
grade 7 events	66415	95953	51303	104541
	43%	84%	44%	38%

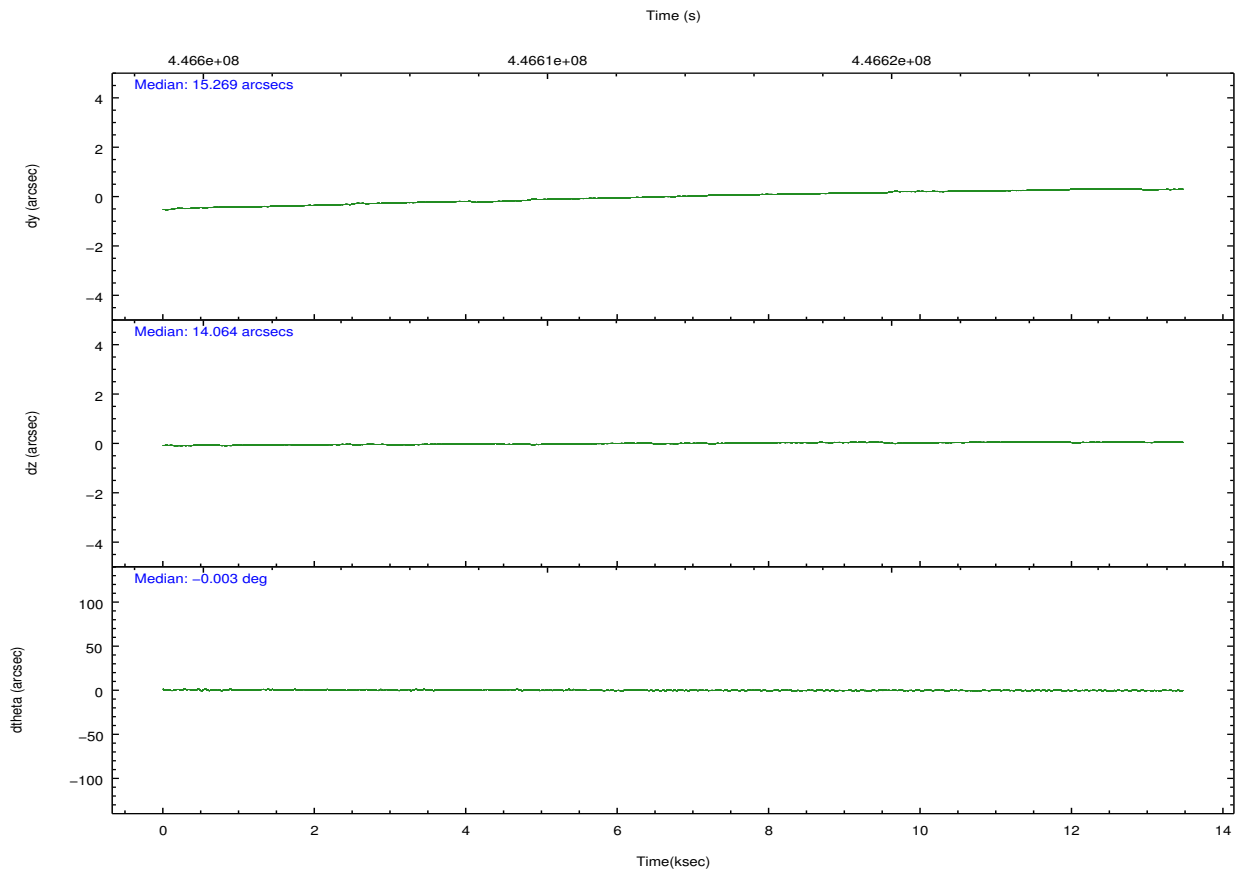
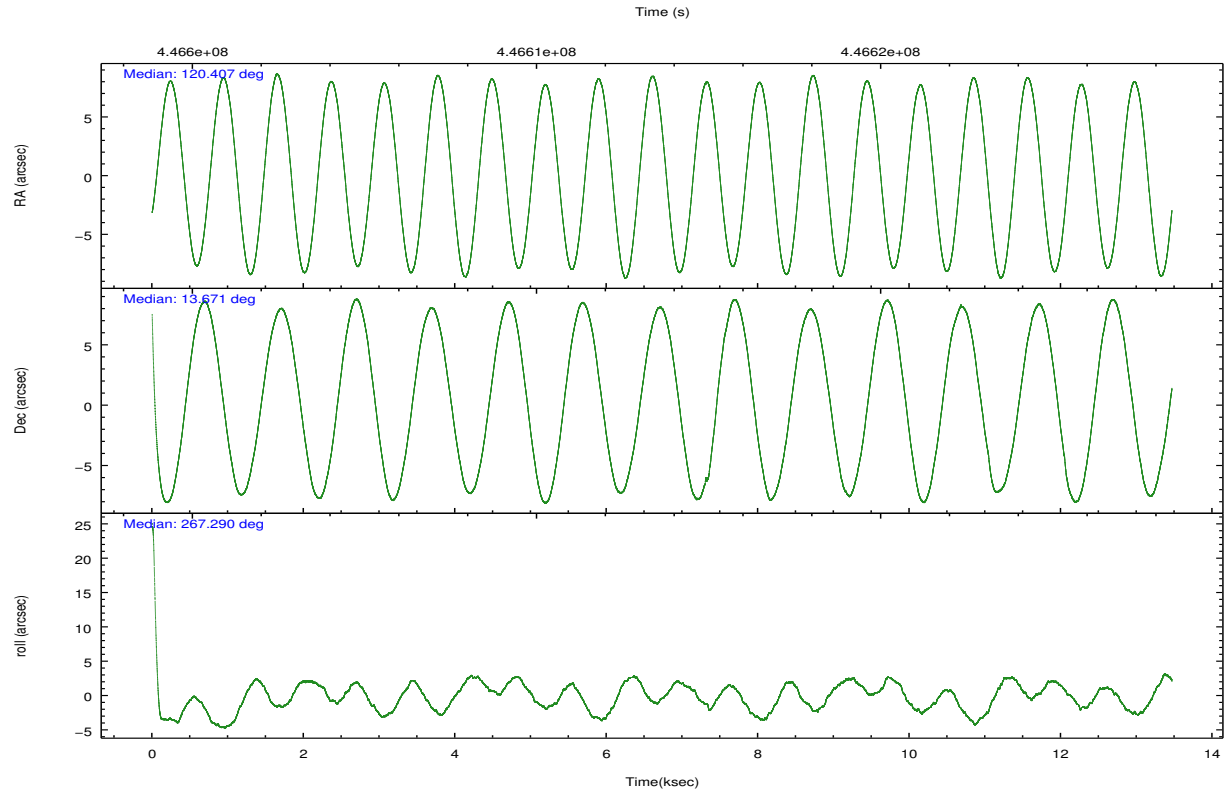


## 2.2 Compared Parameters

Parameter	Planned	Actual	Parameter	Planned	Actual
Instrument	ACIS	ACIS	Obspar format version number	7	7
Detector	ACIS-5678	ACIS-5678	Obspar file type	PREDICTED	ACTUAL
Grating	NONE	NONE	Obspar update status	NONE	UPDATED
Data mode	FAINT	FAINT	Number of optional ACIS chips dropped	0	0
Observation mode	POINTING	POINTING	On-chip summing requested	N	N
[deg] Pointing RA	120.393882	120.4071358481108	Subarray requested	NONE	NONE
[deg] Pointing Dec	13.695376	13.67121124752899	Alternating exposures requested	N	N
[deg] Pointing Roll	267.147602	267.3011218309484	[s] Primary exposure time	0.000000	3.1
[mm] SIM focus pos	-0.684267	-0.6828225247311905			
[mm] SIM defocus	0	0.001444936568705701			
[mm] SIM translation stage pos	-190.132523	-190.1425803651734			
[mm] SIM translation stage offset	0	0.01005778216563158			
[s] Observation start time (MET)	446605259.184000	446604143.83941			
Observation start date	2012-02-26T00:59:53	2012-02-26T00:42:23			
[s] Observation end time (MET)	446618559.184000	446619508.07772			
Observation end date	2012-02-26T04:41:33	2012-02-26T04:58:28			
Read mode	TIMED	TIMED			

## 2.3 Aspect



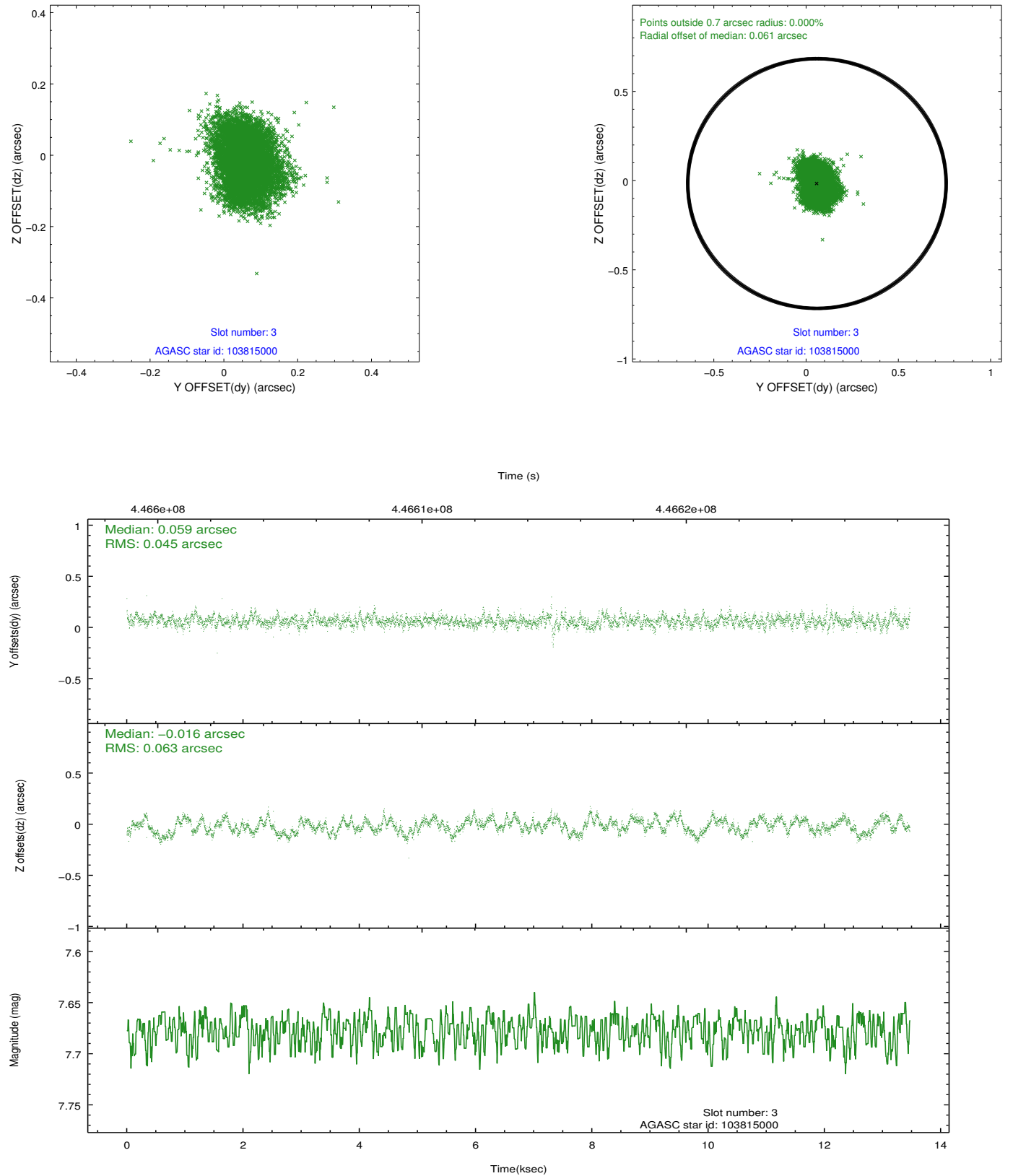


### Slot Statistics

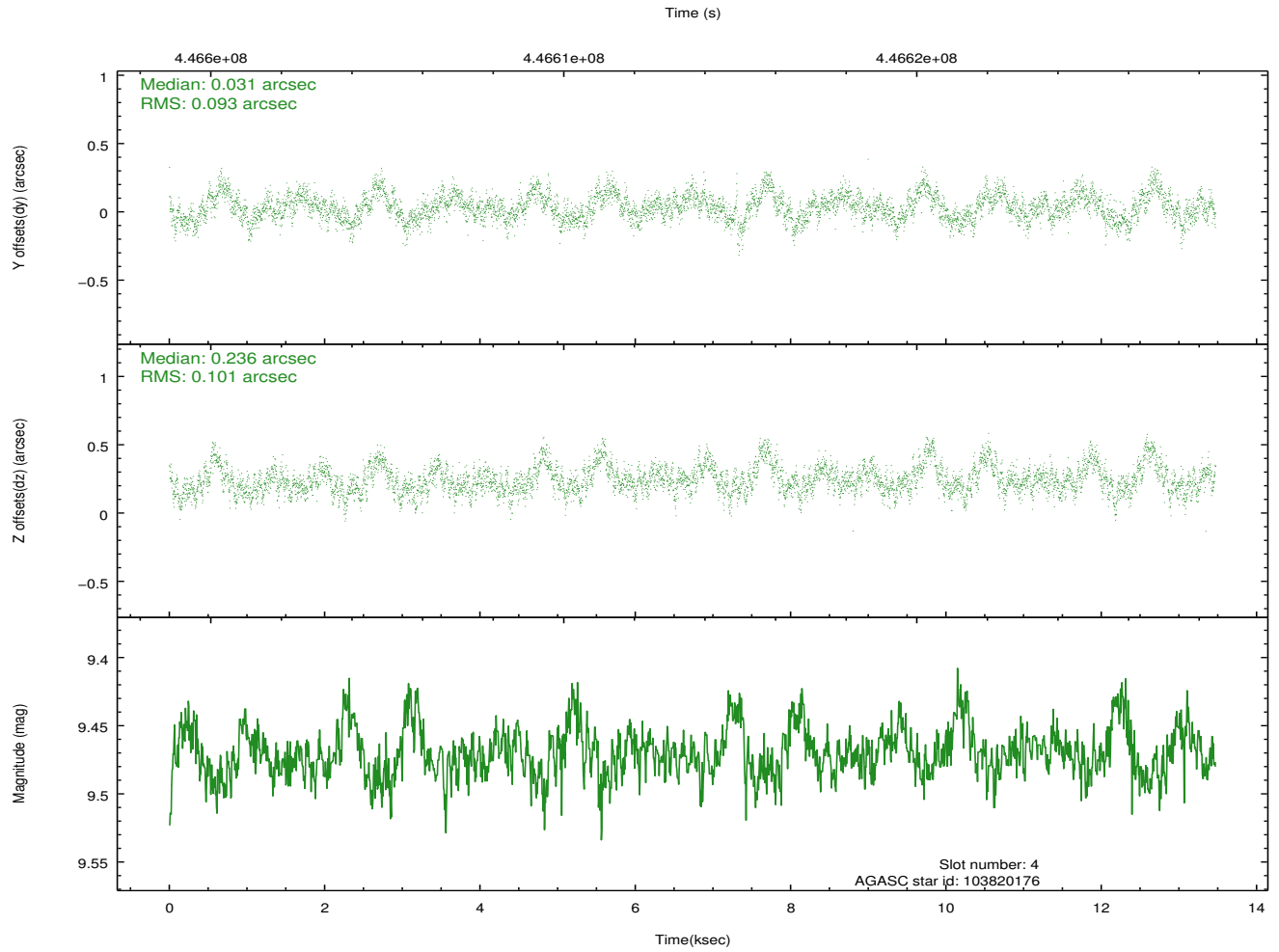
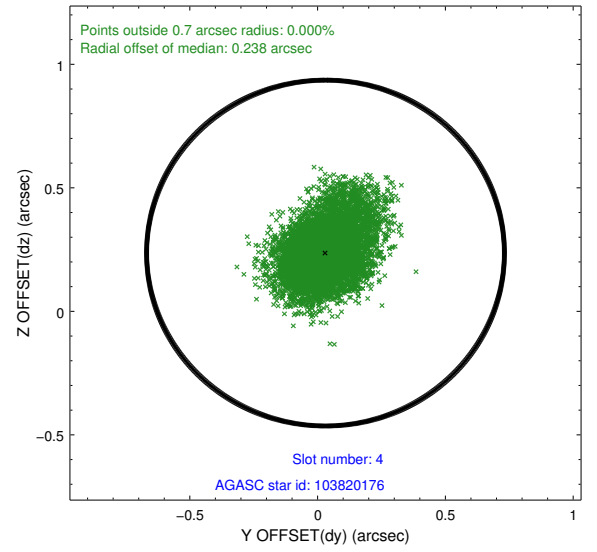
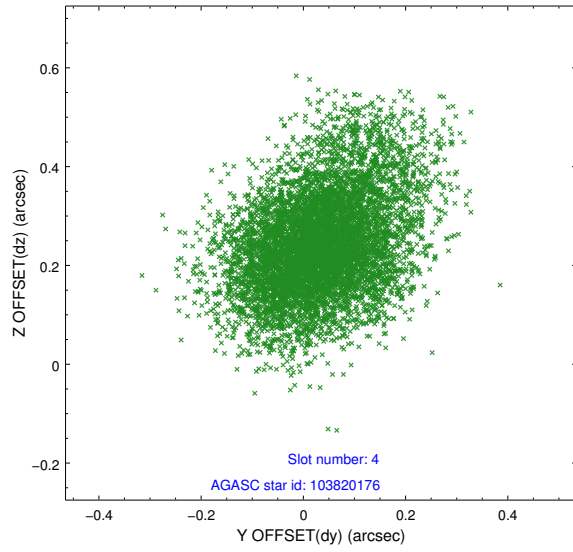
slot	status	id	mag	n_pts	med_dy	med_dz	dr1	dr2	ra	dec	mean_y	mean_z
0	FID	ACIS-S-2	6.96	3285	-0.118	-0.055	0.010	0.017	0.000000	0.000000	-768.35	-1735.41
1	FID	ACIS-S-4	7.05	3284	0.266	0.072	0.009	0.016	0.000000	0.000000	2145.17	172.80
2	FID	ACIS-S-5	7.08	3284	-0.178	-0.008	0.015	0.025	0.000000	0.000000	-1820.78	166.84
3	GUIDE	103815000	7.68	6569	0.059	-0.016	0.083	0.130	119.850457	13.827567	-382.02	-1920.66
4	GUIDE	103820176	9.47	6562	0.031	0.236	0.143	0.248	119.963454	14.169560	-1632.75	-1587.42
5	GUIDE	103945200	7.43	6569	-0.104	0.040	0.068	0.108	120.891074	14.090297	-1508.44	1662.86
6	GUIDE	103946872	9.67	6552	0.077	-0.109	0.144	0.222	121.050604	13.976312	-1128.39	2241.06
7	GUIDE	103948272	6.64	6570	-0.069	-0.157	0.075	0.116	121.024833	13.687519	-85.56	2204.55

## 2.4 Star Slots

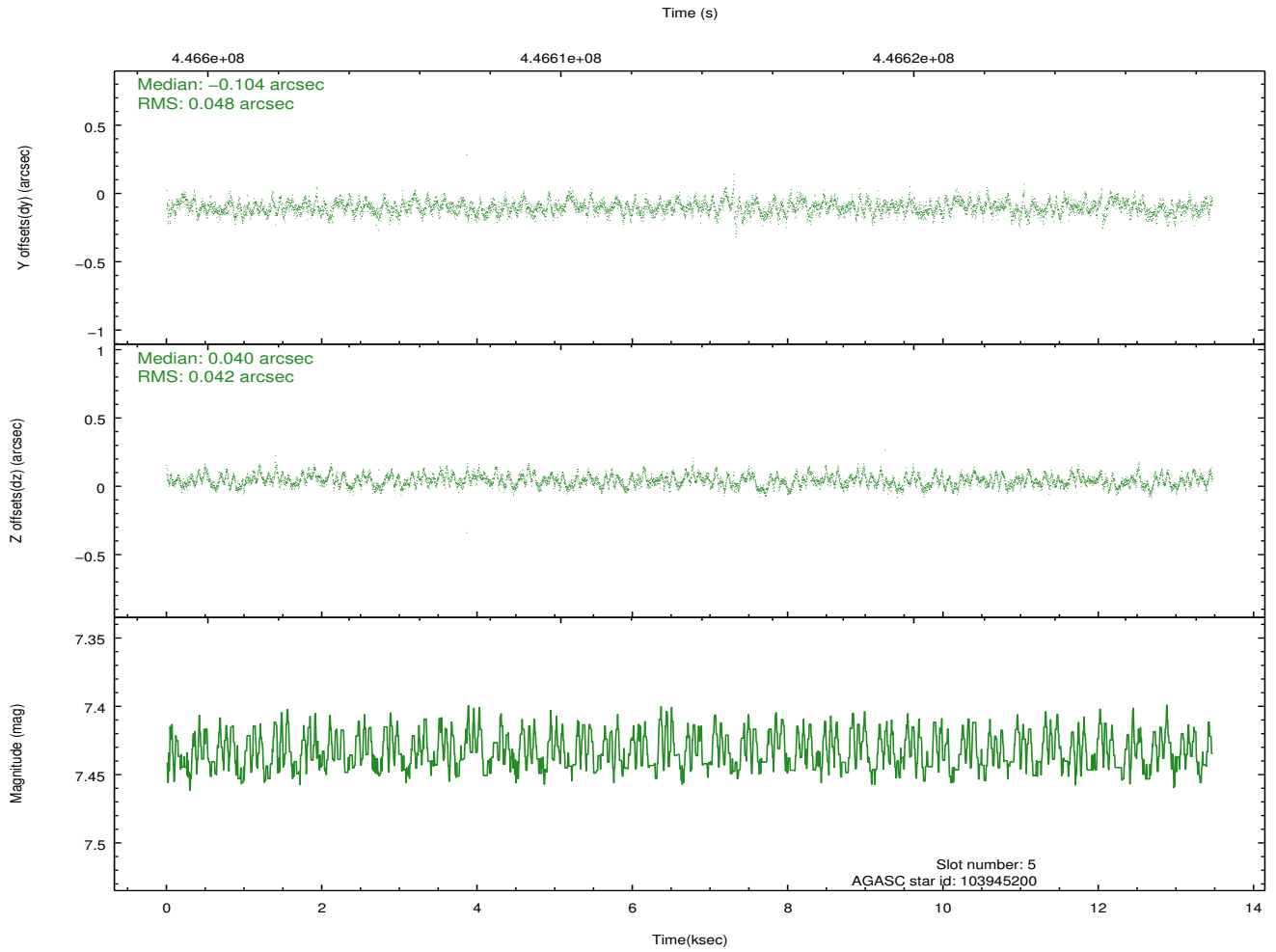
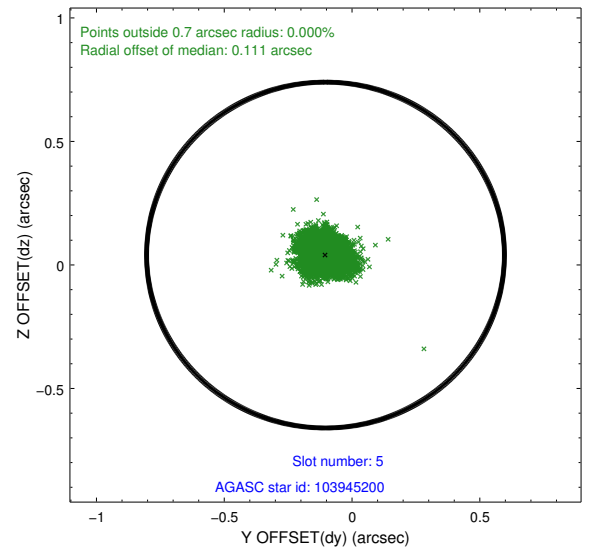
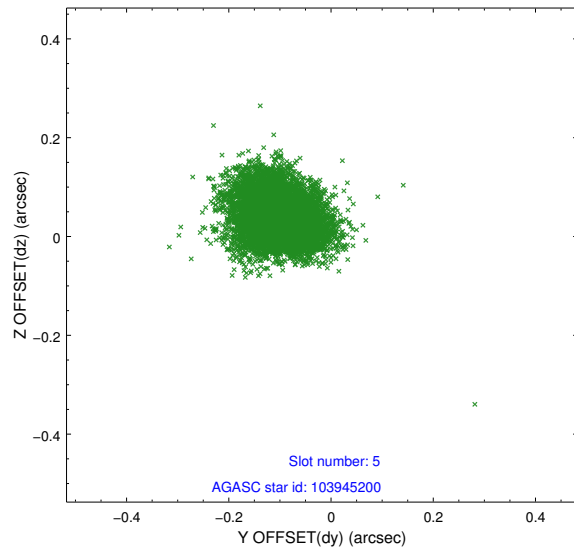
### 2.4.1 Slot 3



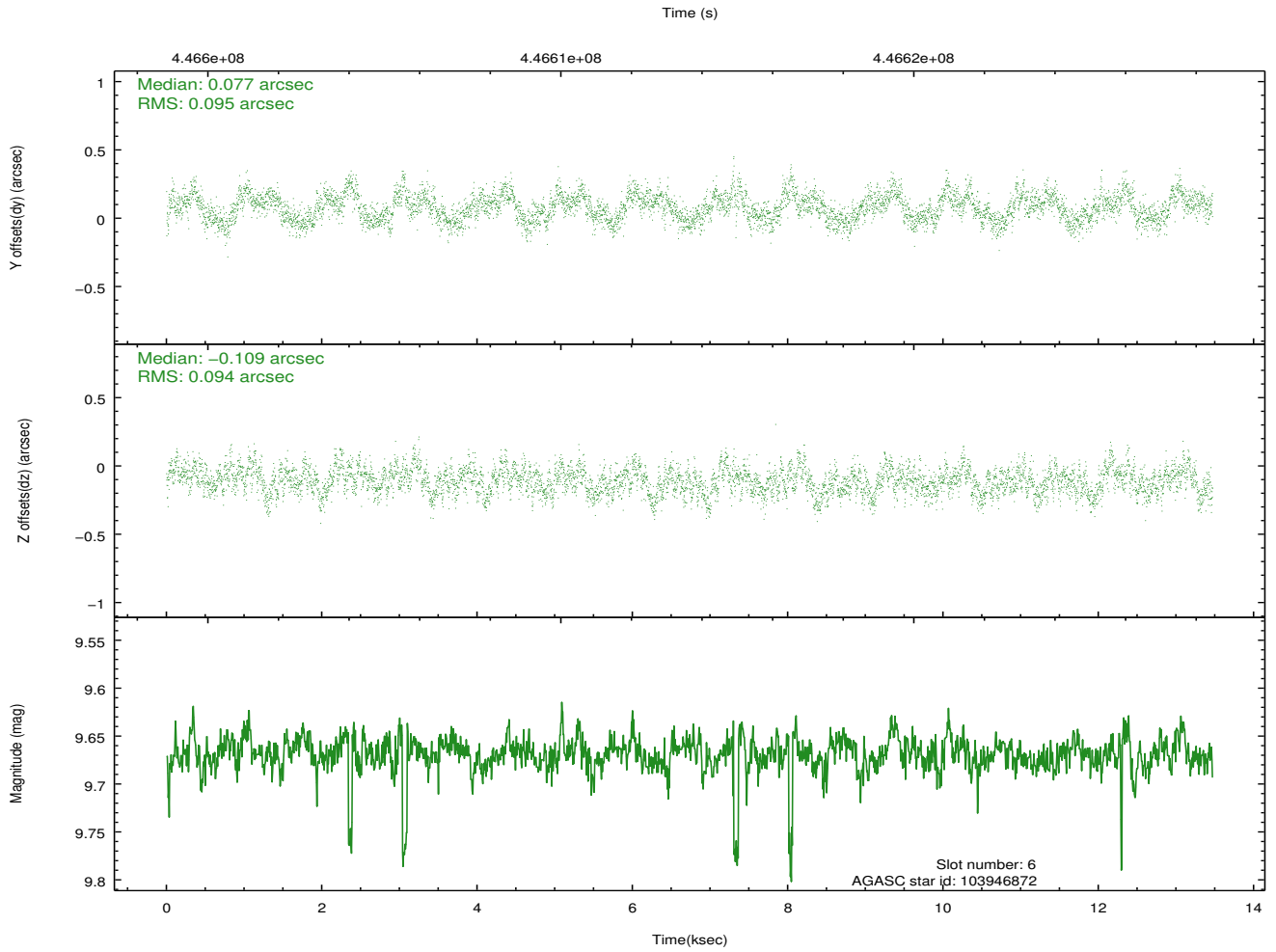
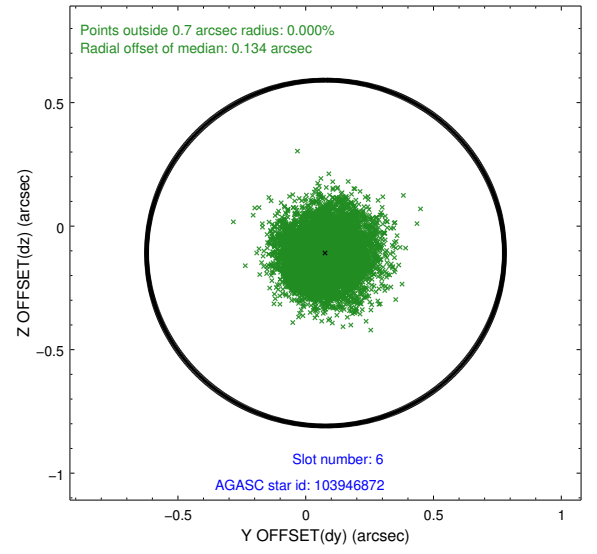
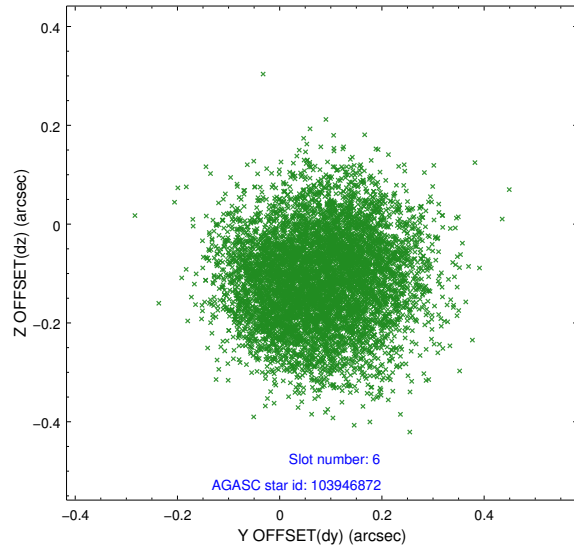
## 2.4.2 Slot 4



### 2.4.3 Slot 5

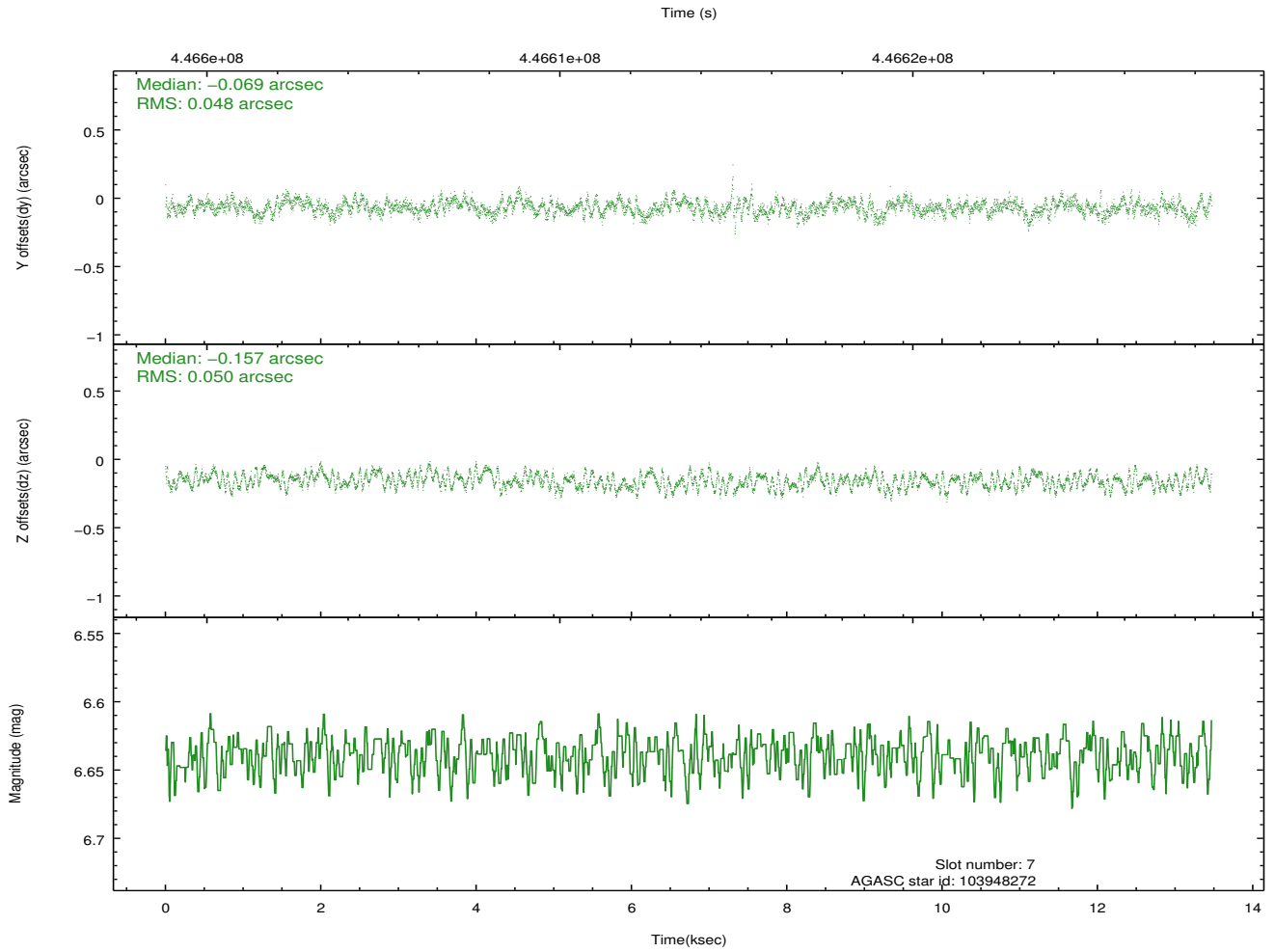
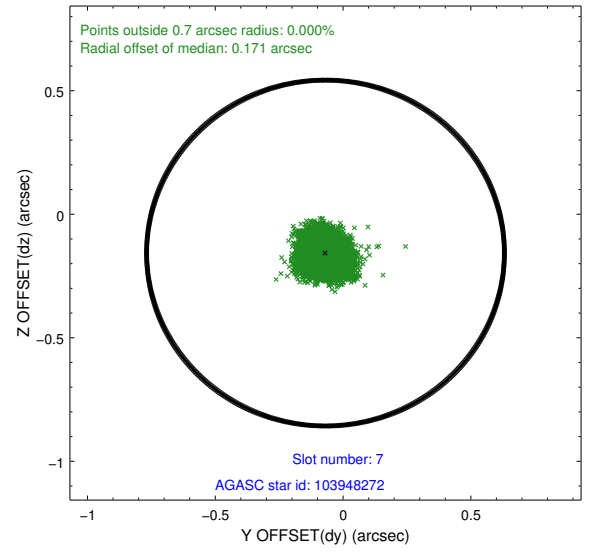
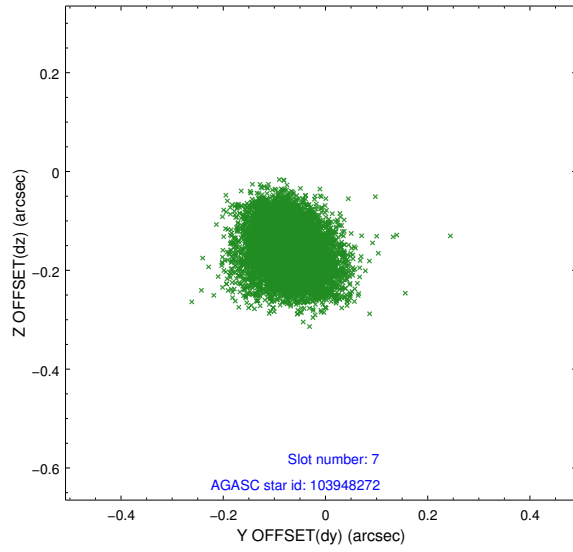


## 2.4.4 Slot 6



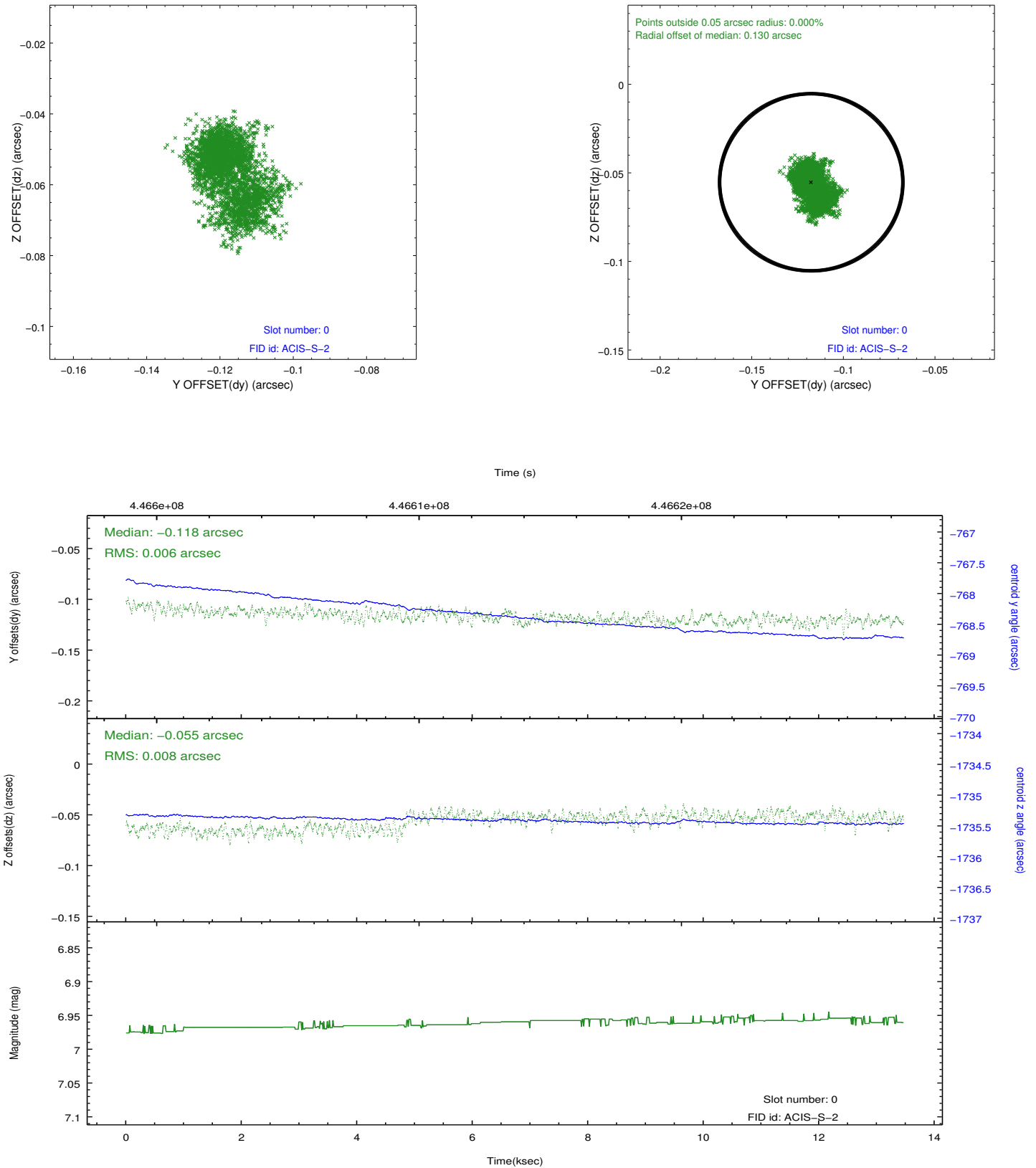


## 2.4.5 Slot 7

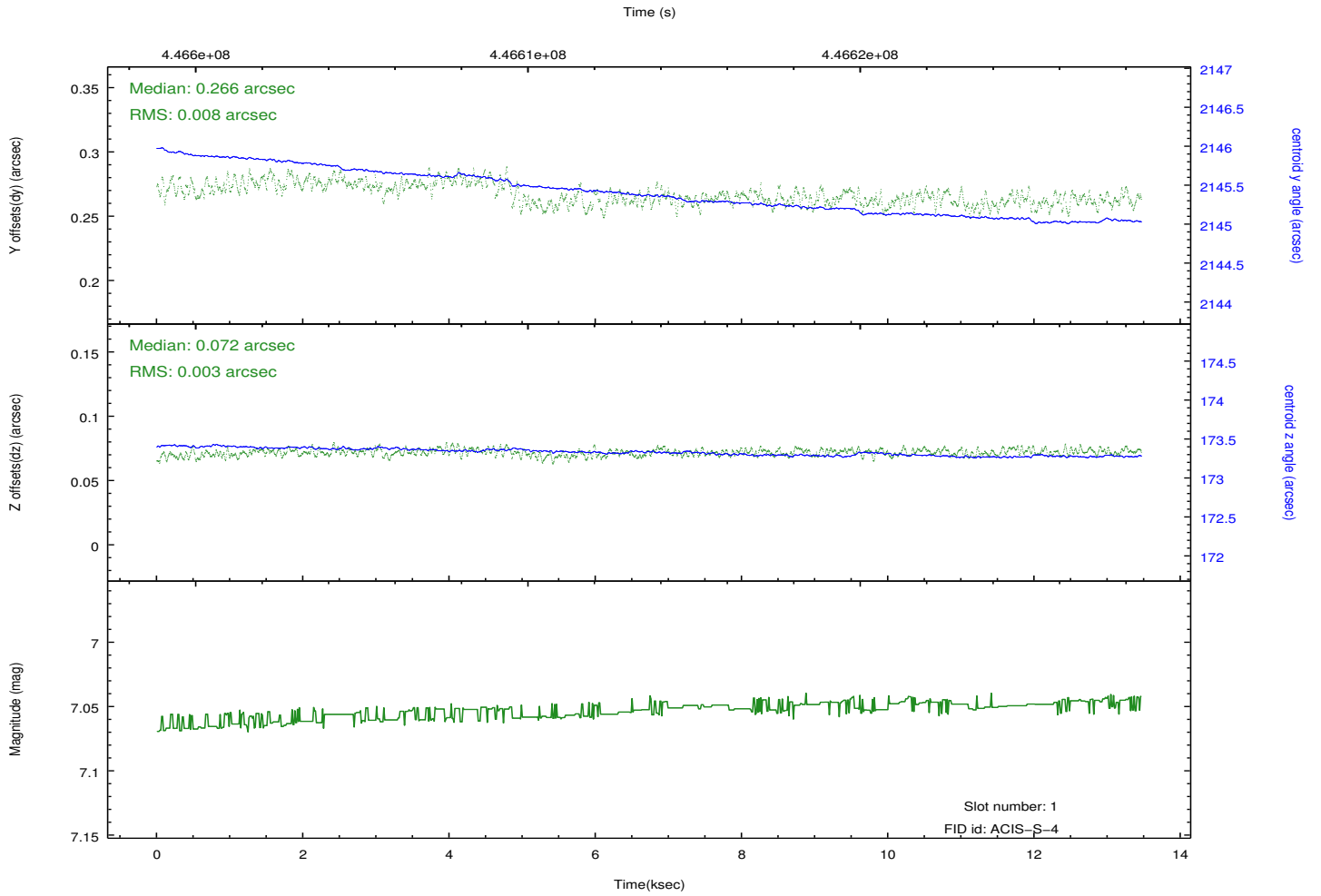
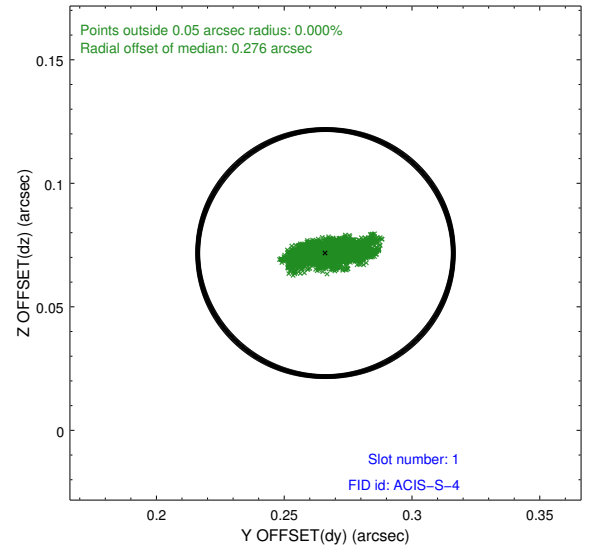
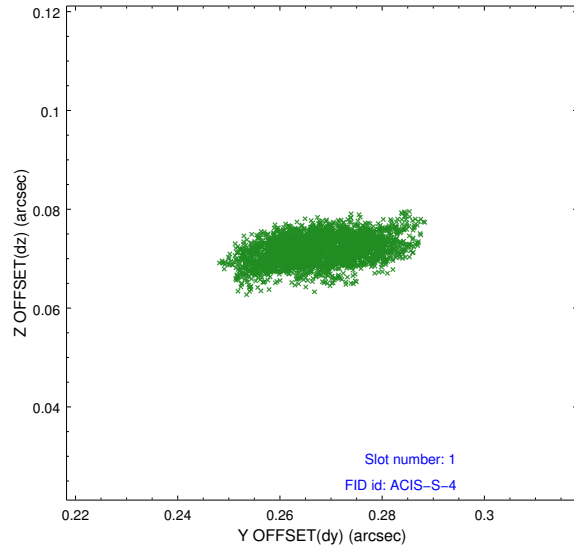


## 2.5 FID Slots

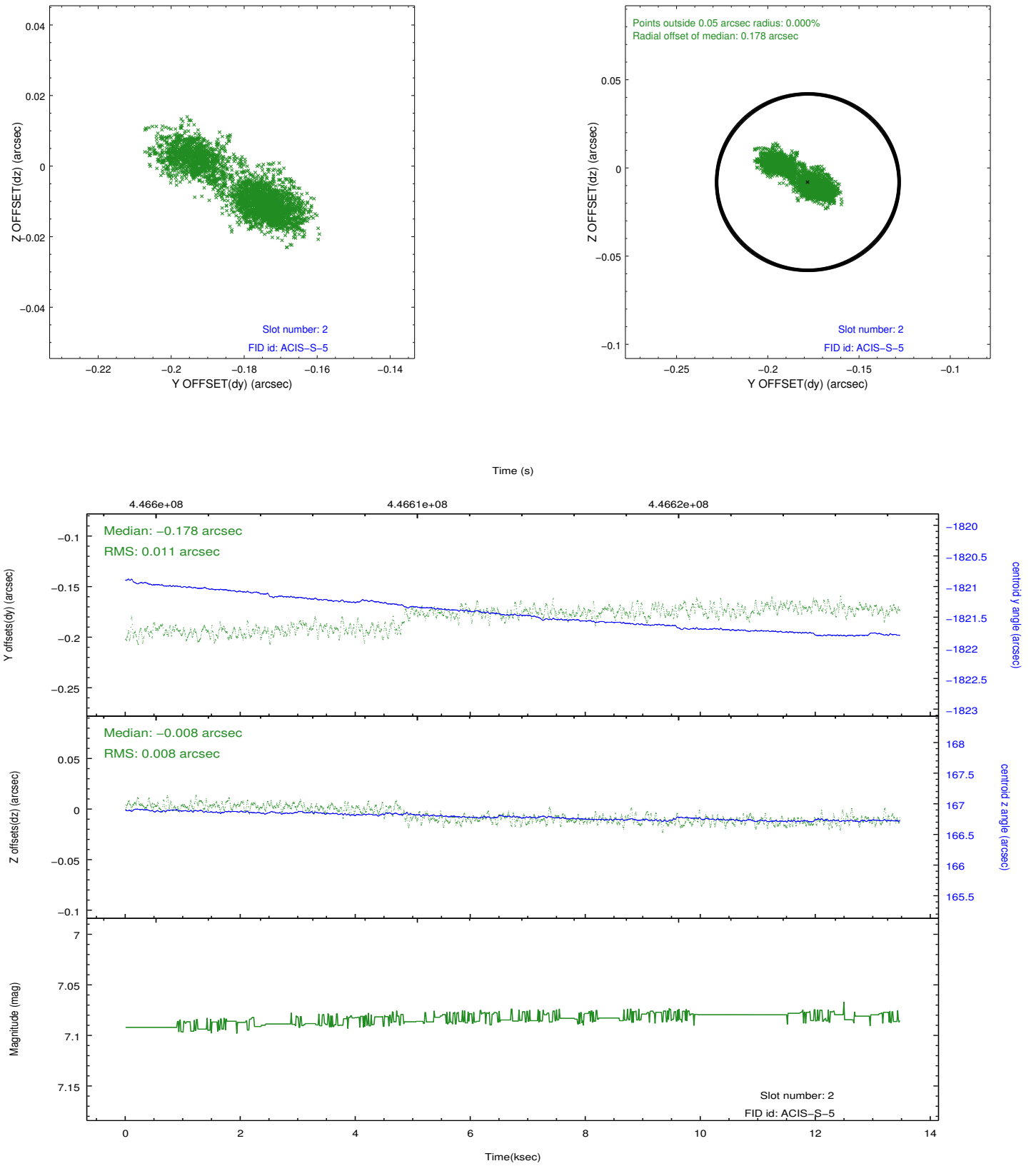
### 2.5.1 Slot 0



## 2.5.2 Slot 1



### 2.5.3 Slot 2



## A Summary

### A.1 Status

V&V Scientist	Jen Lauer
V&V Date (YYYY-MM-DD)	2012.02.27
V&V Edition	1
V&V Disposition and Status	OK
V&V Charge Time	13.364100102782

### A.2 Comments