

# V&V Reference Report

## L2 ASCDS Version : 8.4.4

Observation 13886 - L2 Version 1  
Chandra X-Ray Center

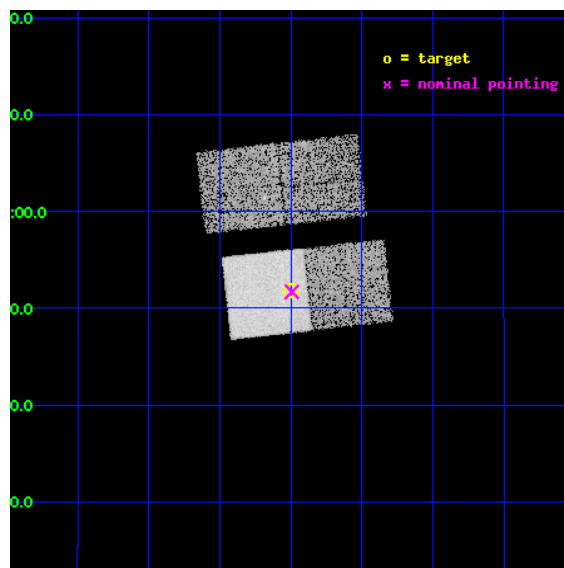
L2 Processing Date : May 8 2012

## Contents

<b>1</b>	<b>Front</b>	<b>2</b>
<b>2</b>	<b>OBI</b>	<b>3</b>
2.1	OBI . . . . .	3
2.1.1	Images . . . . .	3
2.1.2	Bias . . . . .	3
2.1.3	Parameters . . . . .	4
2.1.4	Events . . . . .	4
2.2	Compared Parameters . . . . .	5
2.3	Aspect . . . . .	6
2.4	Star Slots . . . . .	9
2.4.1	Slot 3 . . . . .	9
2.4.2	Slot 4 . . . . .	10
2.4.3	Slot 5 . . . . .	11
2.4.4	Slot 6 . . . . .	12
2.4.5	Slot 7 . . . . .	13
2.5	FID Slots . . . . .	14
2.5.1	Slot 0 . . . . .	14
2.5.2	Slot 1 . . . . .	15
2.5.3	Slot 2 . . . . .	16
<b>A</b>	<b>Summary</b>	<b>17</b>
A.1	Status . . . . .	17
A.2	Comments . . . . .	17

# 1 Front

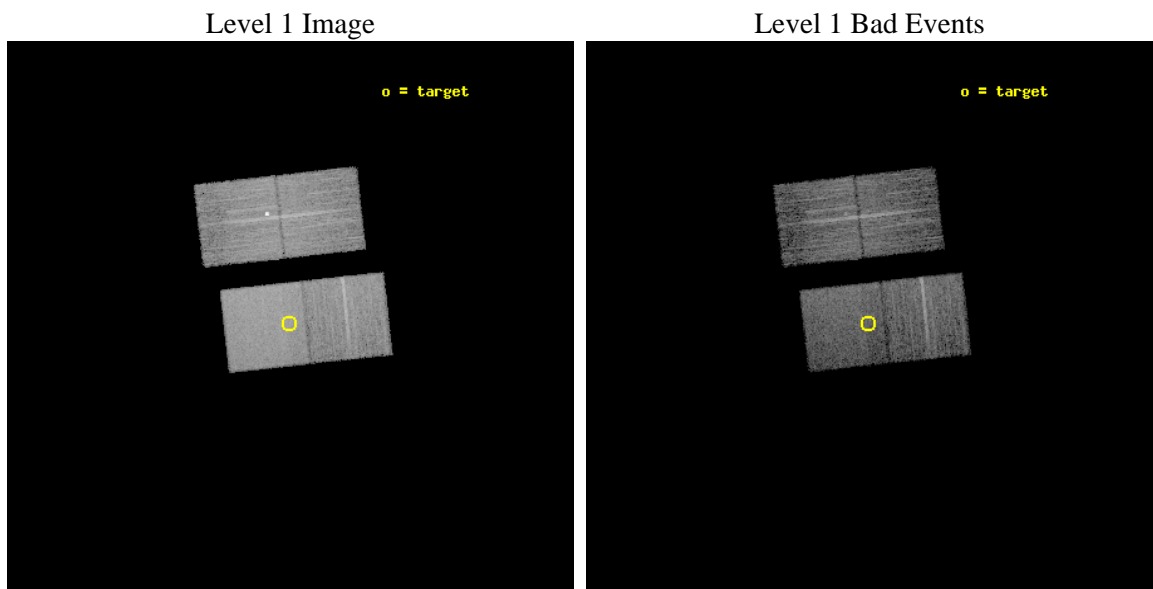
seq_num	702611	Sequence number
obs_id	13886	Observation id
title	Extending the Chandra 3C Snapshot Survey: Radio Galaxies with 0.3	Proposal title
observer	Dr. Francesco Massaro	Principal investigator
object	3c313	Source name
dtcycle	0	&#160
cycle	P	events from which exps? Prim/Second/Both
ra_targ	227.75	Observer's specified target RA [deg]
dec_targ	7.863889	Observer's specified target Dec [deg]
ra_nom	227.74806324649	Nominal RA [deg]
dec_nom	7.8615469610633	Nominal Dec [deg]
roll_nom	173.73168469062	Nominal Roll [deg]
revision	1	Processing version of data
ontime	12074.500092864	Sum of GTIs [s]
livetime	11916.737860033	Livetime [s]
ontime2	12071.35905236	Sum of GTIs [s]
ontime3	12068.218012214	Sum of GTIs [s]
ontime6	12071.359052539	Sum of GTIs [s]
ontime7	12074.500092864	Sum of GTIs [s]
l2events	62722	Number of level 2 events



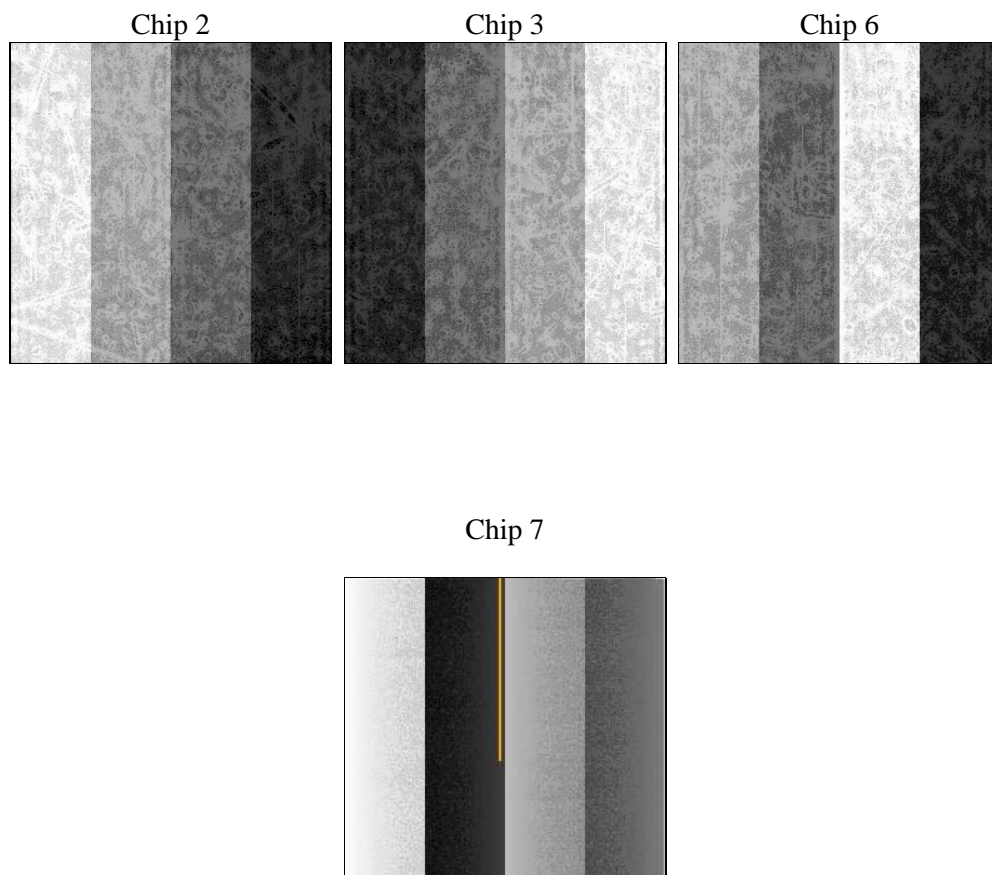
## 2 OBI

### 2.1 OBI

#### 2.1.1 Images



#### 2.1.2 Bias



### 2.1.3 Parameters

obi_num	0	Obi number	sched_exp_time	12000.000000	[s] Scheduled observation exposure time
ascdsver	8.4.4	Processing system revision	ontime	12074.500092864	Sum of GTIs [s]
caldsver	4.4.9	&#160	ontime2	12071.35905236	Sum of GTIs [s]
date	2012-05-08T13:14:54	Date and time of file creation	ontime3	12068.218012214	Sum of GTIs [s]
revision	1	Processing version of data	ontime6	12071.359052539	Sum of GTIs [s]
			ontime7	12074.500092864	Sum of GTIs [s]
			l1events	315271	Number of level 1 events

### 2.1.4 Events

	ccd 2	ccd 3	ccd 6	ccd 7
level 1 events	69683	76427	72252	96909
rejected events	61796	65025	63603	54280
rejected %	88%	85%	88%	56%

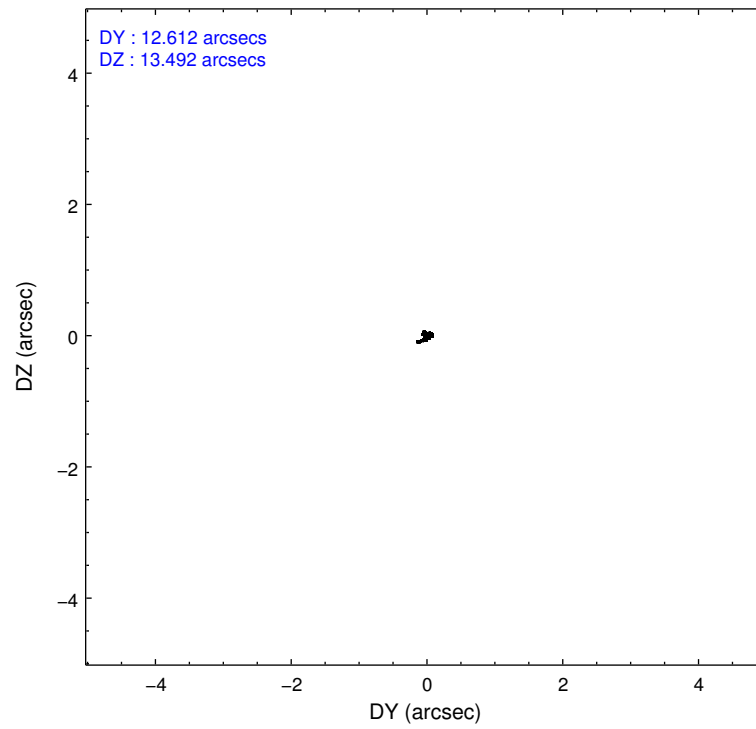
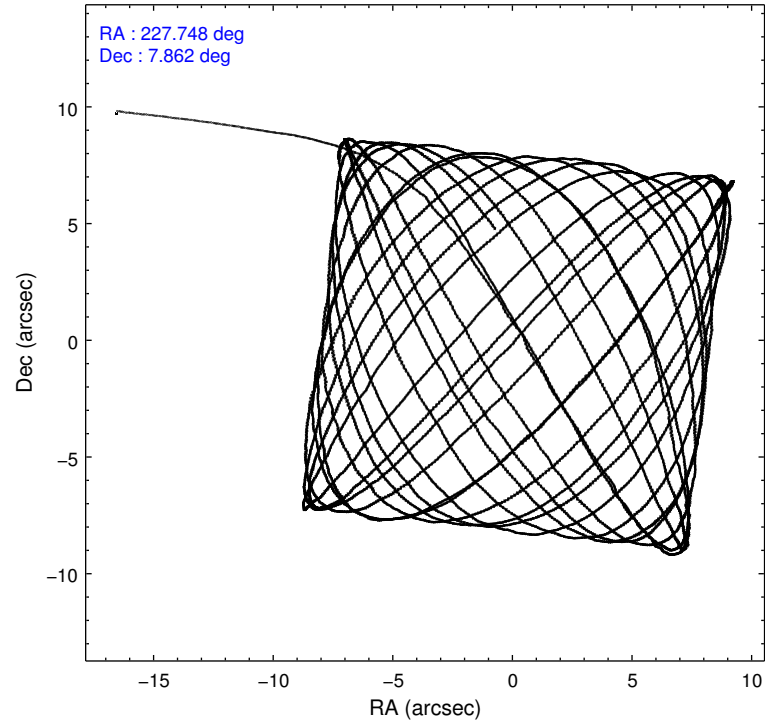
	ccd 2	ccd 3	ccd 6	ccd 7
grade 0 events	2813	6412	3125	3999
	4%	8%	4%	4%
grade 1 events	46	119	37	108
	0%	0%	0%	0%
grade 2 events	1790	1670	1875	8685
	2%	2%	2%	8%
grade 3 events	829	864	877	3635
	1%	1%	1%	3%
grade 4 events	872	863	865	3536
	1%	1%	1%	3%
grade 5 events	3092	3742	3559	9705
	4%	4%	4%	10%
grade 6 events	1585	1596	1911	22783
	2%	2%	2%	23%
grade 7 events	58656	61161	60003	44458
	84%	80%	83%	45%

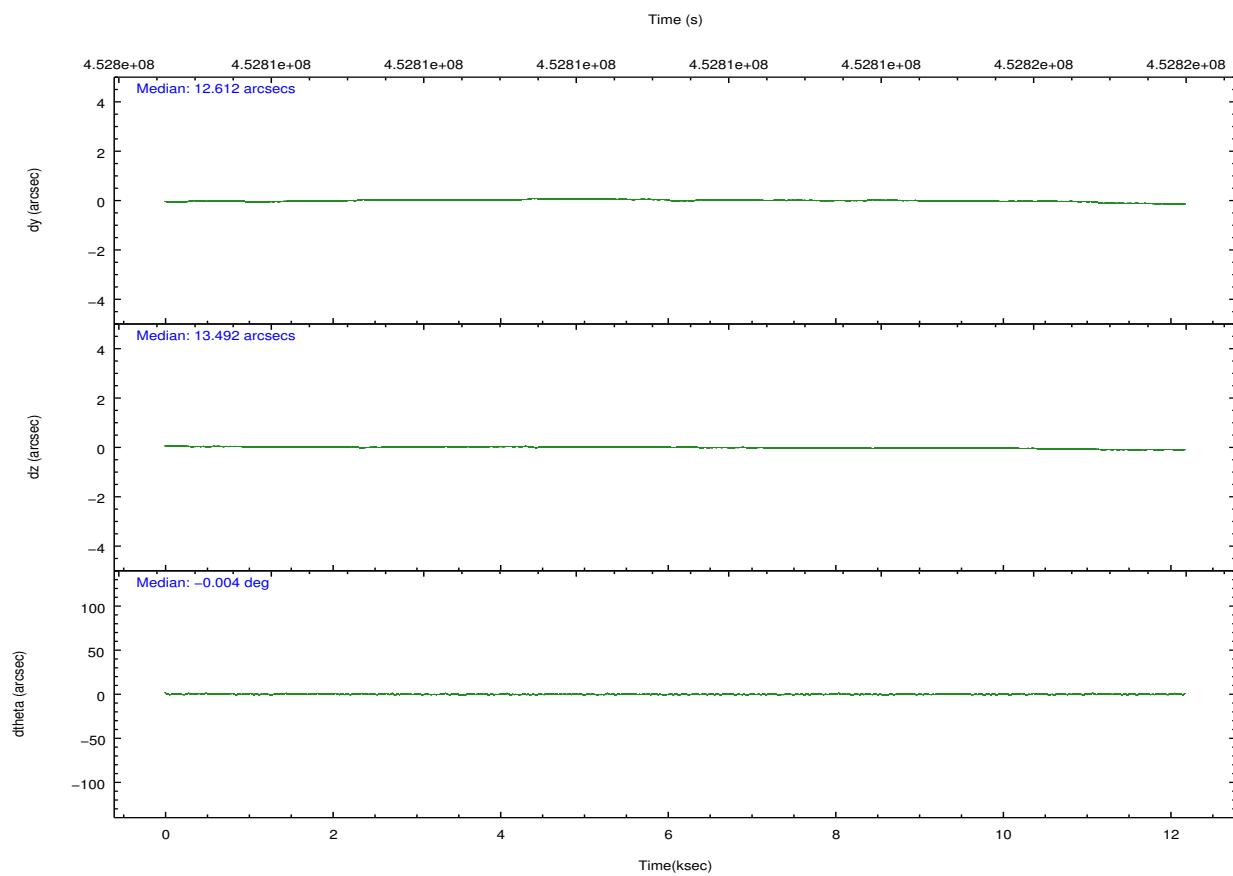
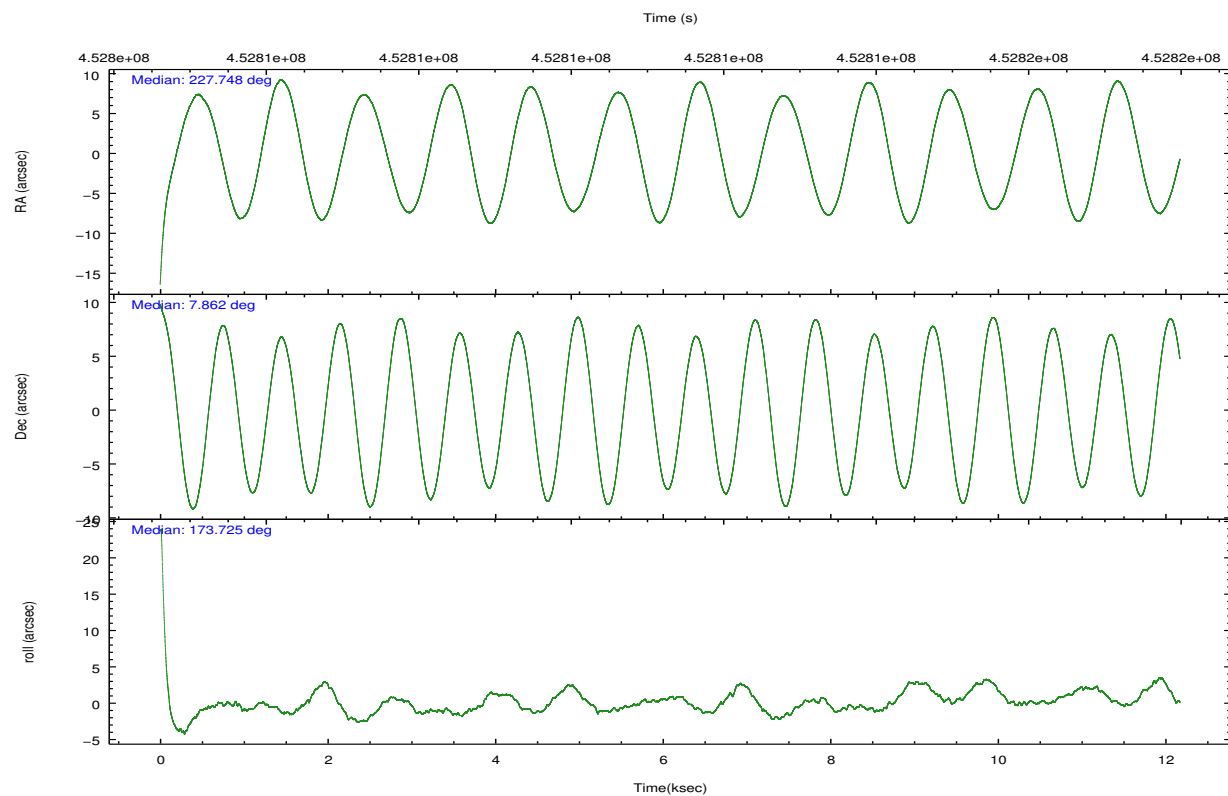


## 2.2 Compared Parameters

Parameter	Planned	Actual	Parameter	Planned	Actual
Instrument	ACIS	ACIS	Obspar format version number	7	7
Detector	ACIS-2367	ACIS-2367	Obspar file type	PREDICTED	ACTUAL
Grating	NONE	NONE	Obspar update status	NONE	UPDATED
Data mode	VFAINT	VFAINT	CCD I0 on	N	N
Observation mode	POINTING	POINTING	CCD I1 on	N	N
[deg] Pointing RA	227.773198	227.7480632464877	CCD I2 on	O1	Y
[deg] Pointing Dec	7.872870	7.861546961063322	CCD I3 on	O2	Y
[deg] Pointing Roll	173.571585	173.7316846906234	CCD S0 on	N	N
[mm] SIM focus pos	-0.684267	-0.6828225247311905	CCD S1 on	N	N
[mm] SIM defocus	0	0.001444936568705701	CCD S2 on	Y	Y
[mm] SIM translation stage pos	-190.132523	-190.1400660498719	CCD S3 on	Y	Y
[mm] SIM translation stage offset	0	0.00754346686406393	CCD S4 on	N	N
[s] Observation start time (MET)	452805384.184000	452804039.11817	CCD S5 on	N	N
Observation start date	2012-05-07T19:15:18	2012-05-07T18:53:59	Number of optional ACIS chips dropped	0	0
[s] Observation end time (MET)	452817384.184000	452817964.25641	On-chip summing requested	N	N
Observation end date	2012-05-07T22:35:18	2012-05-07T22:46:04	Subarray requested	NONE	NONE
Read mode	TIMED	TIMED	Alternating exposures requested	N	N
			[s] Primary exposure time	0.000000	3.1

## 2.3 Aspect



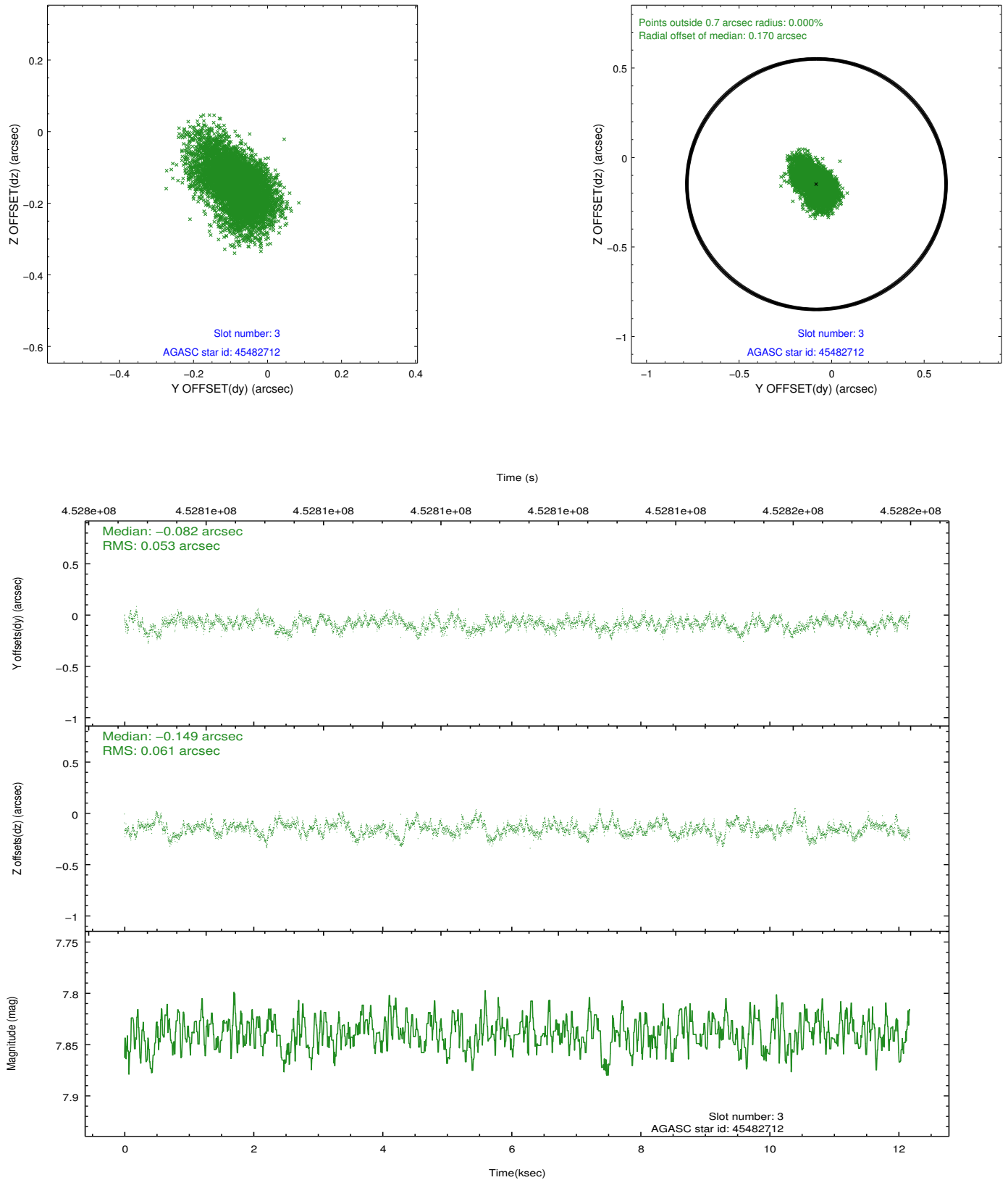


### Slot Statistics

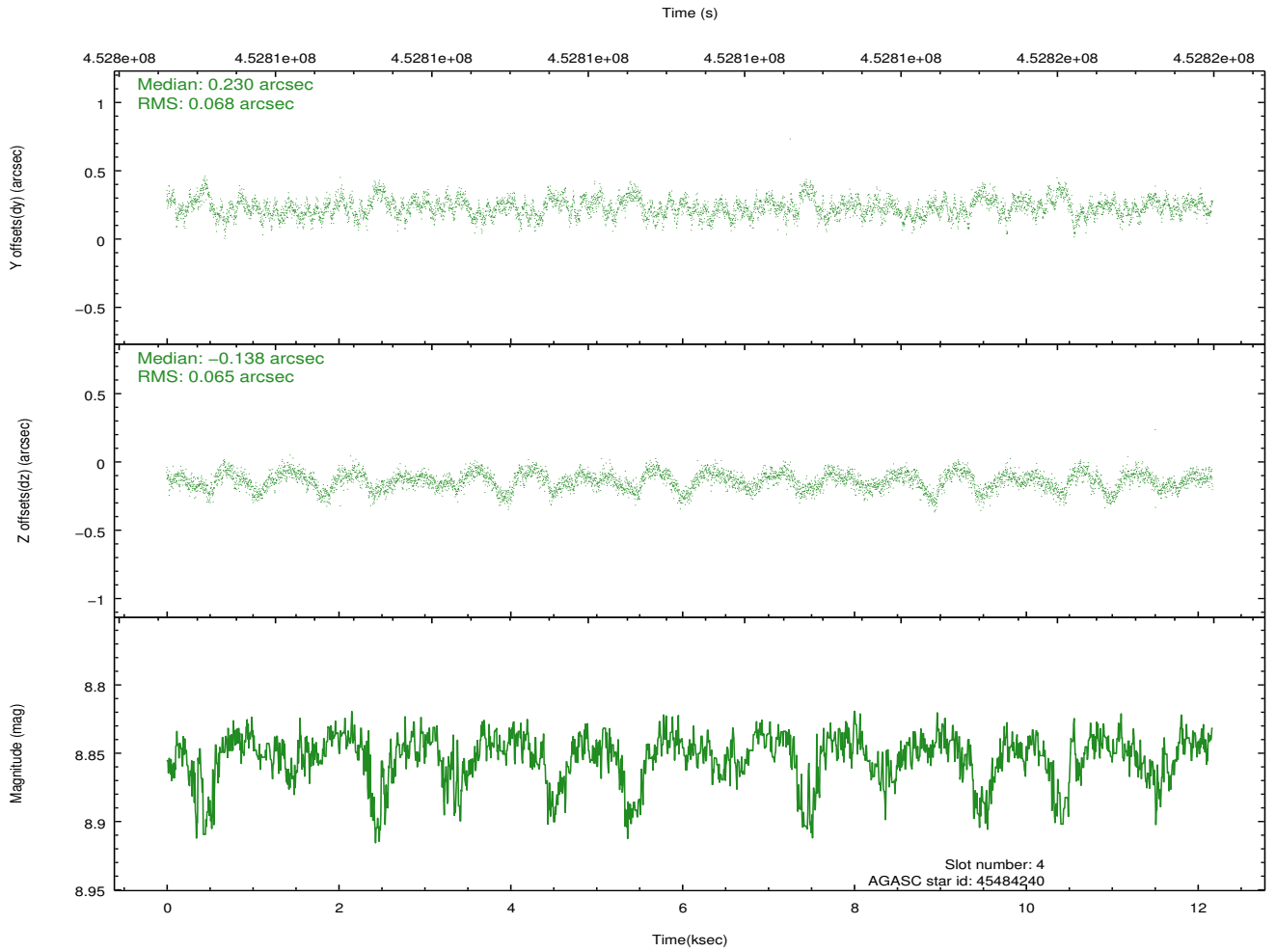
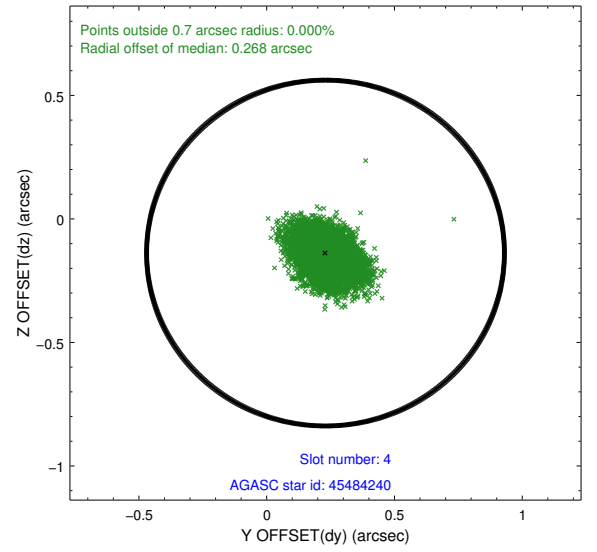
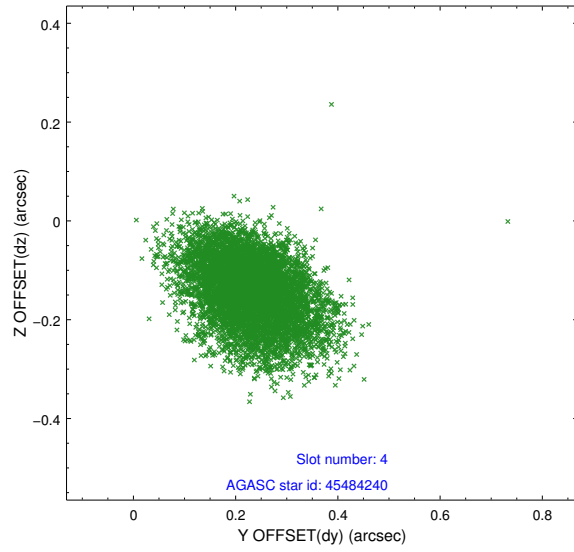
slot	status	id	mag	n_pts	med_dy	med_dz	dr1	dr2	ra	dec	mean_y	mean_z
0	FID	ACIS-S-2	7.02	2969	-0.048	-0.056	0.007	0.011	0.000000	0.000000	-765.57	-1734.87
1	FID	ACIS-S-4	7.11	2968	0.203	0.038	0.006	0.012	0.000000	0.000000	2147.78	173.26
2	FID	ACIS-S-5	7.15	2968	-0.185	0.026	0.007	0.012	0.000000	0.000000	-1818.01	167.41
3	GUIDE	45482712	7.84	5938	-0.082	-0.149	0.085	0.143	227.751708	7.324466	-144.86	1970.54
4	GUIDE	45484240	8.85	5937	0.230	-0.138	0.099	0.163	228.204200	7.399711	-1719.42	1519.92
5	GUIDE	120588808	8.89	5935	0.234	0.269	0.082	0.137	227.297709	8.356137	1878.23	-1539.23
6	GUIDE	120592656	7.97	5939	-0.020	0.036	0.067	0.106	227.893195	8.517064	-164.13	-2352.38
7	GUIDE	120593792	8.67	5933	-0.363	-0.012	0.095	0.154	227.369477	8.593395	1718.75	-2417.40

## 2.4 Star Slots

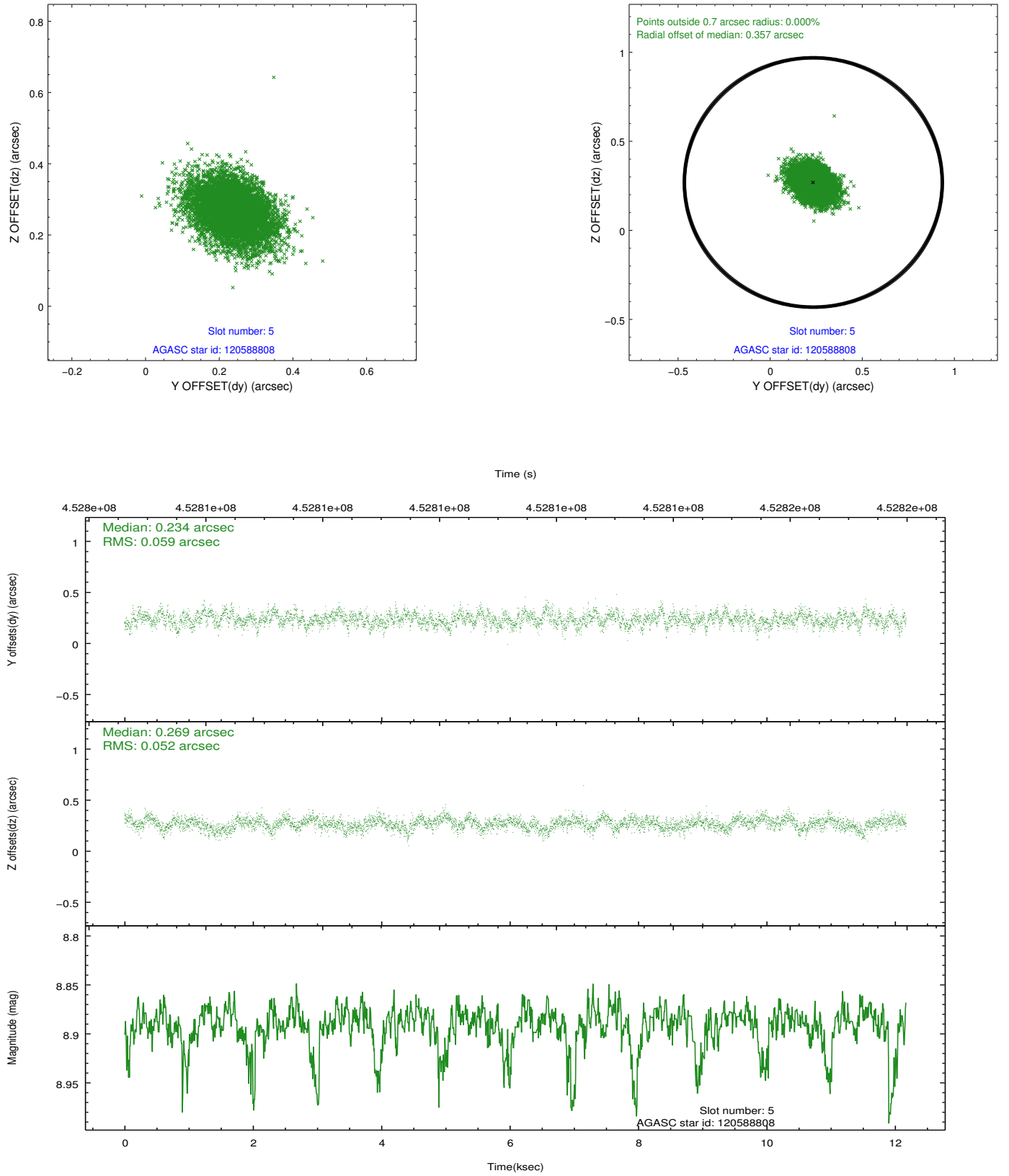
### 2.4.1 Slot 3



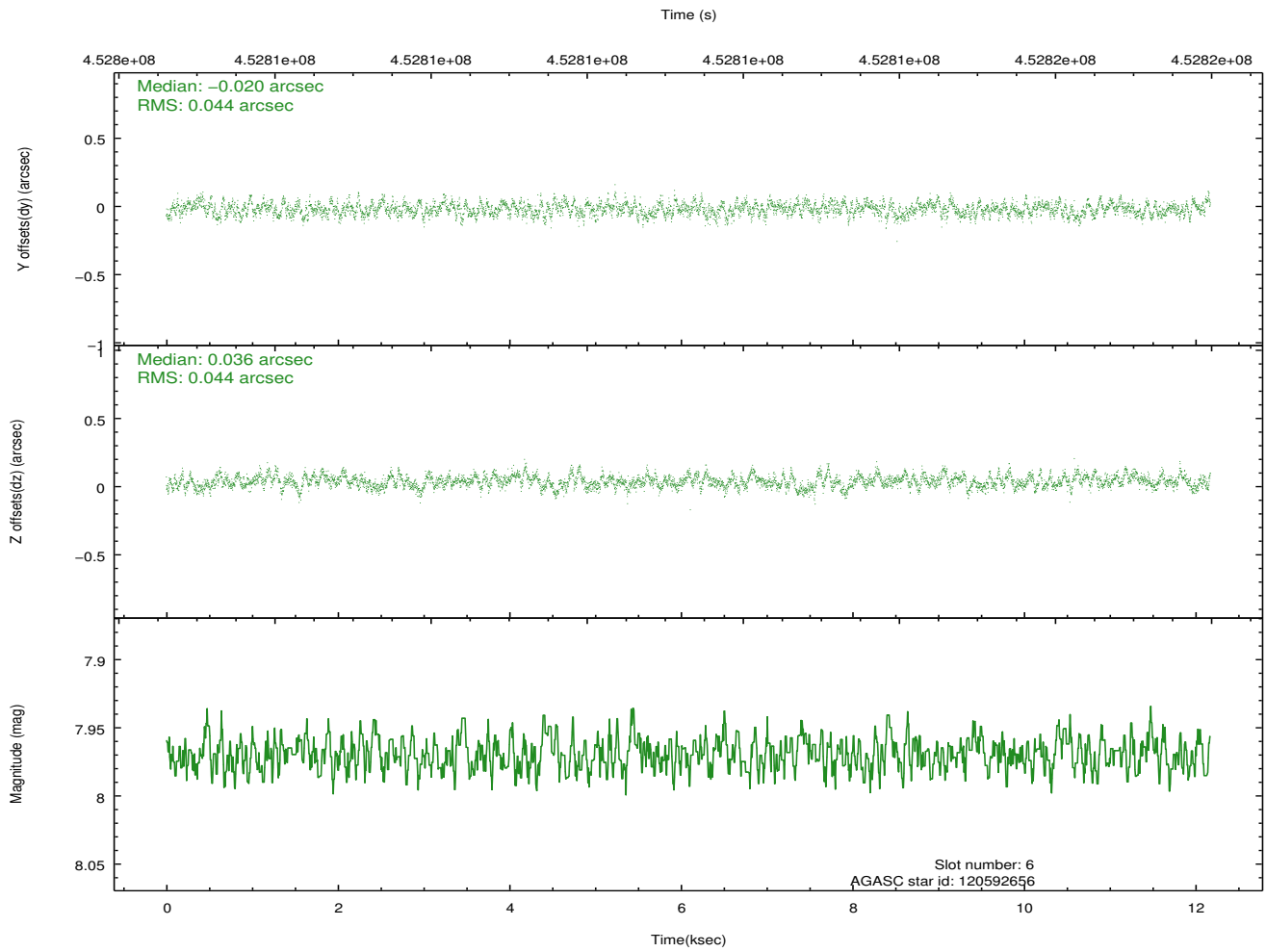
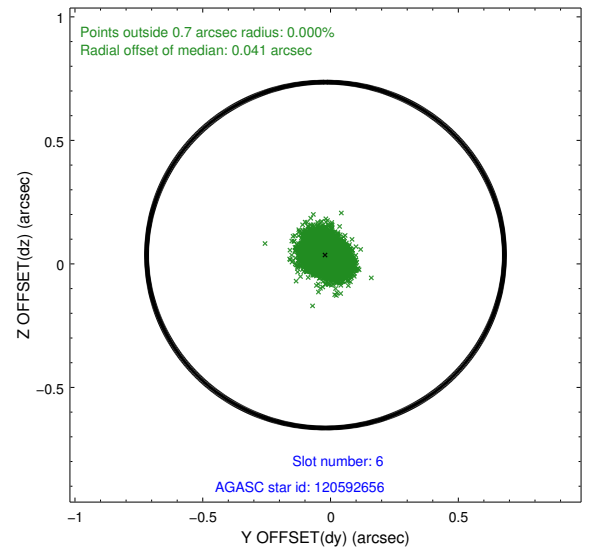
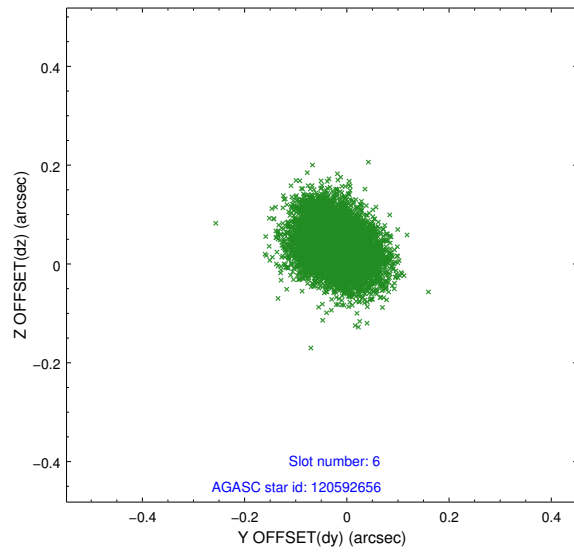
## 2.4.2 Slot 4



### 2.4.3 Slot 5

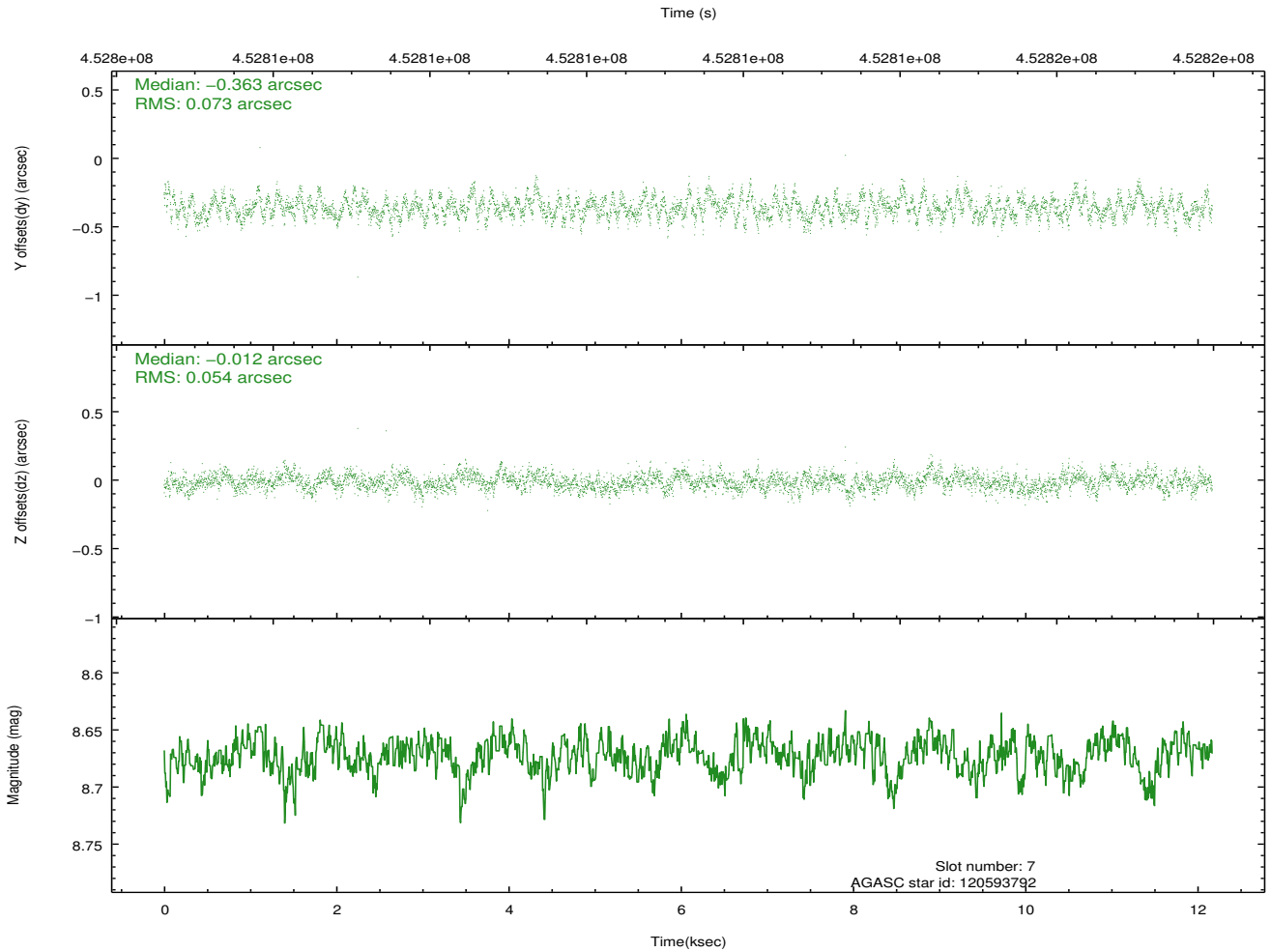
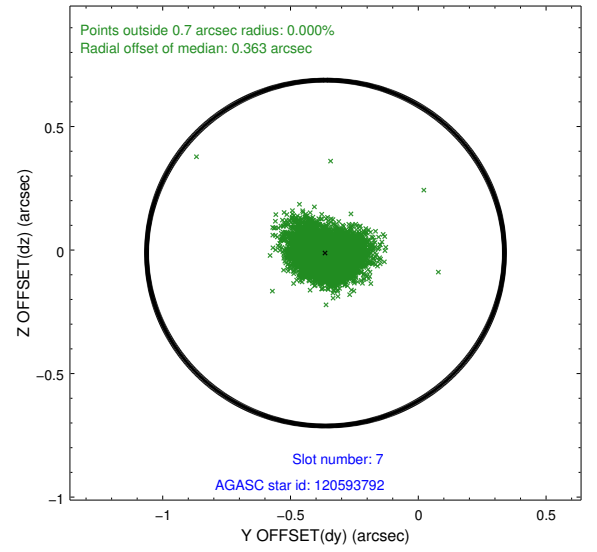
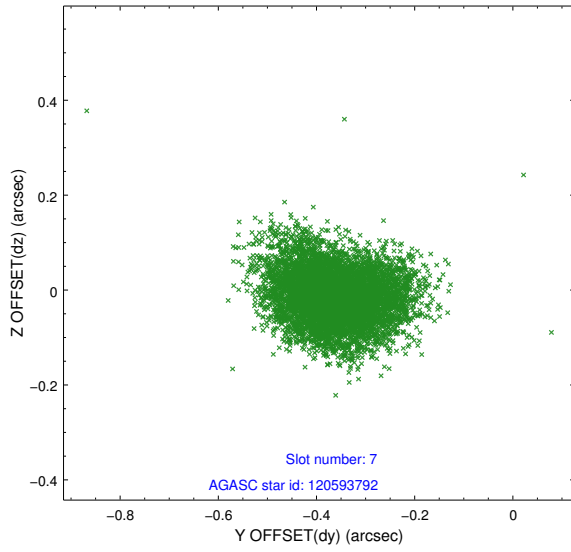


## 2.4.4 Slot 6



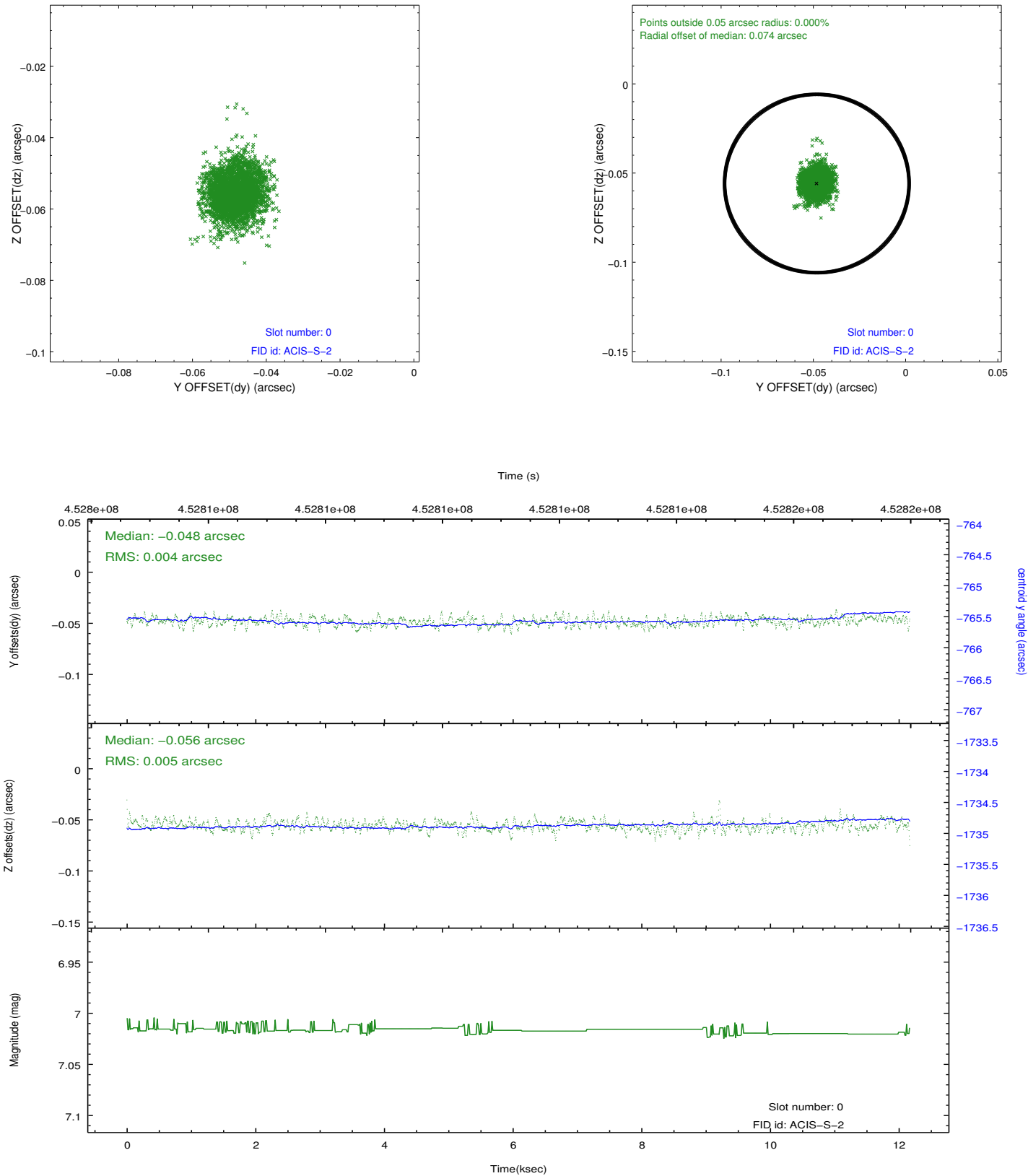


## 2.4.5 Slot 7

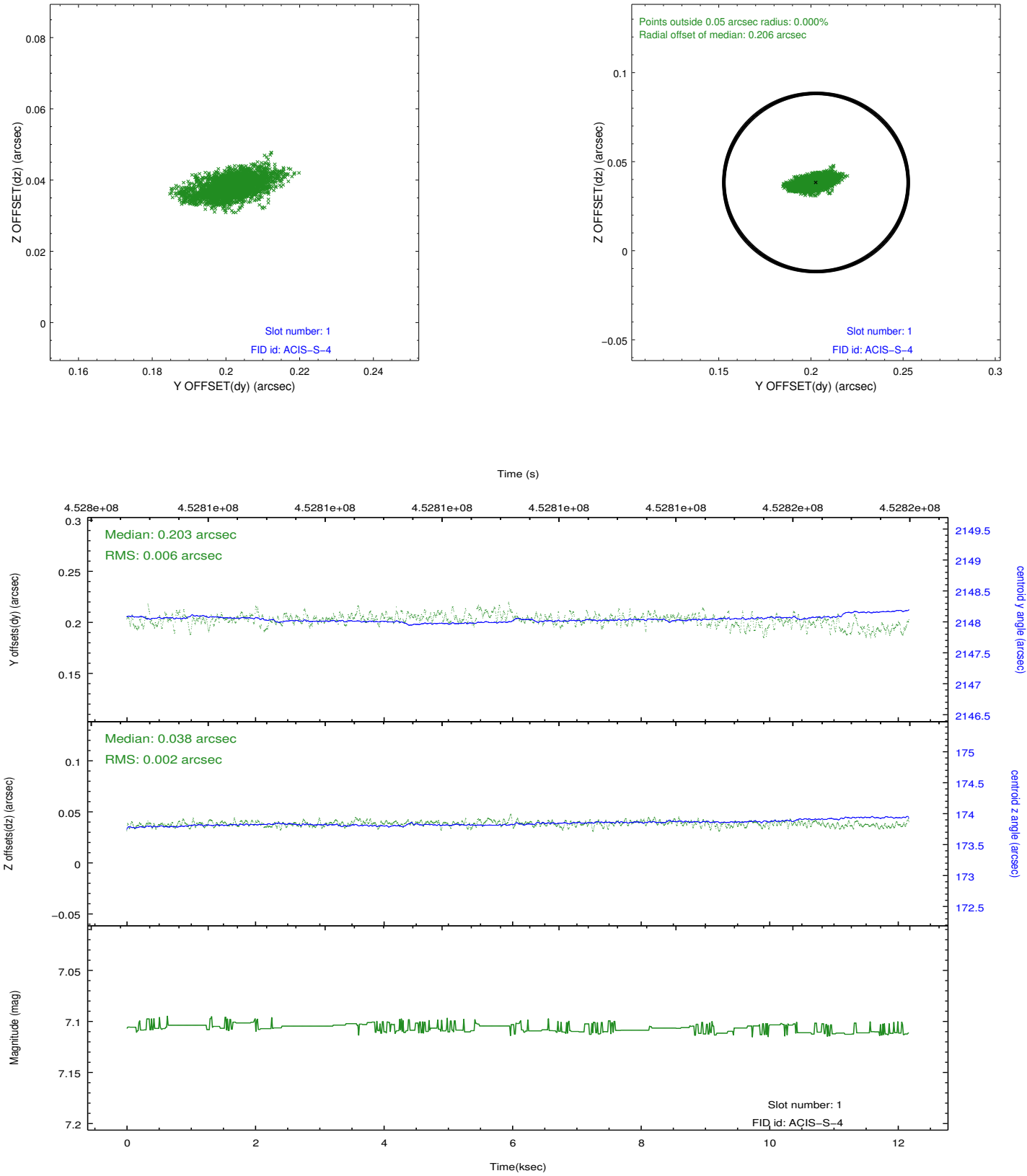


## 2.5 FID Slots

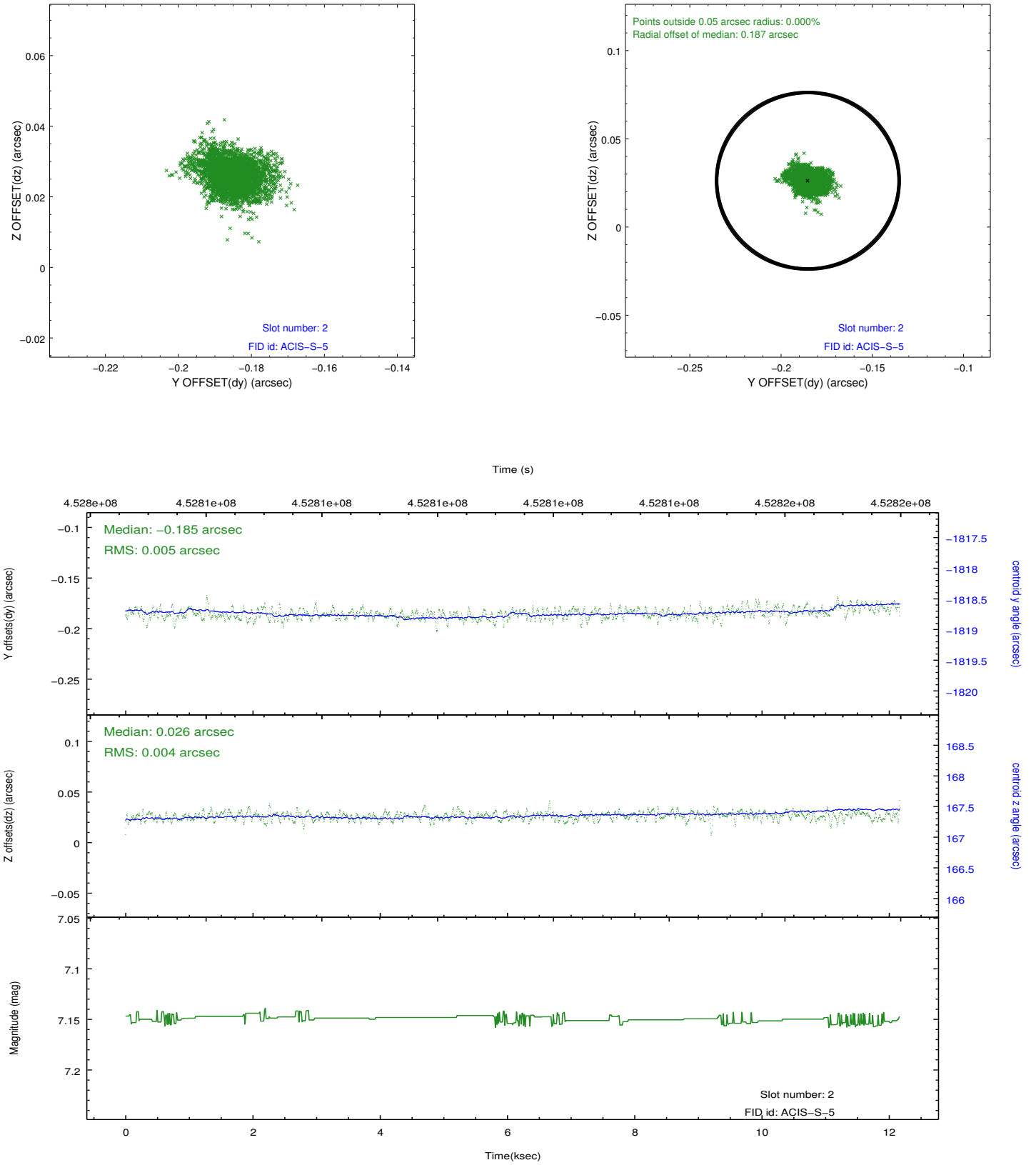
### 2.5.1 Slot 0



## 2.5.2 Slot 1



### 2.5.3 Slot 2



## **A Summary**

### **A.1 Status**

V&V Scientist	Jen Lauer
V&V Date (YYYY-MM-DD)	2012.05.08
V&V Edition	1
V&V Disposition and Status	OK
V&V Charge Time	12.074500092864

### **A.2 Comments**