

V&V Reference Report

L2 ASCDS Version : 8.4.5

Observation 13859 - L2 Version 2
Chandra X-Ray Center

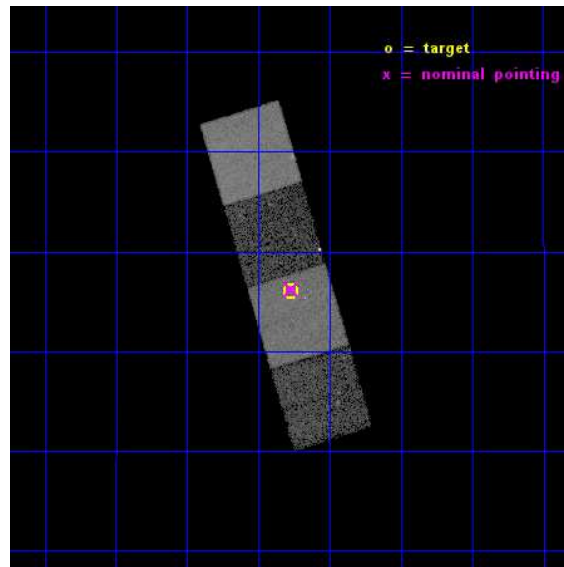
L2 Processing Date : Nov 28 2014

Contents

1	Front	2
2	OBI	3
2.1	OBI	3
2.1.1	Images	3
2.1.2	Bias	3
2.1.3	Parameters	4
2.1.4	Events	4
2.2	Compared Parameters	5
2.3	Aspect	6
2.4	Star Slots	9
2.4.1	Slot 3	9
2.4.2	Slot 4	10
2.4.3	Slot 5	11
2.4.4	Slot 6	12
2.4.5	Slot 7	13
2.5	FID Slots	14
2.5.1	Slot 0	14
2.5.2	Slot 1	15
2.5.3	Slot 2	16
A	Summary	17
A.1	Status	17
A.2	Comments	17

1 Front

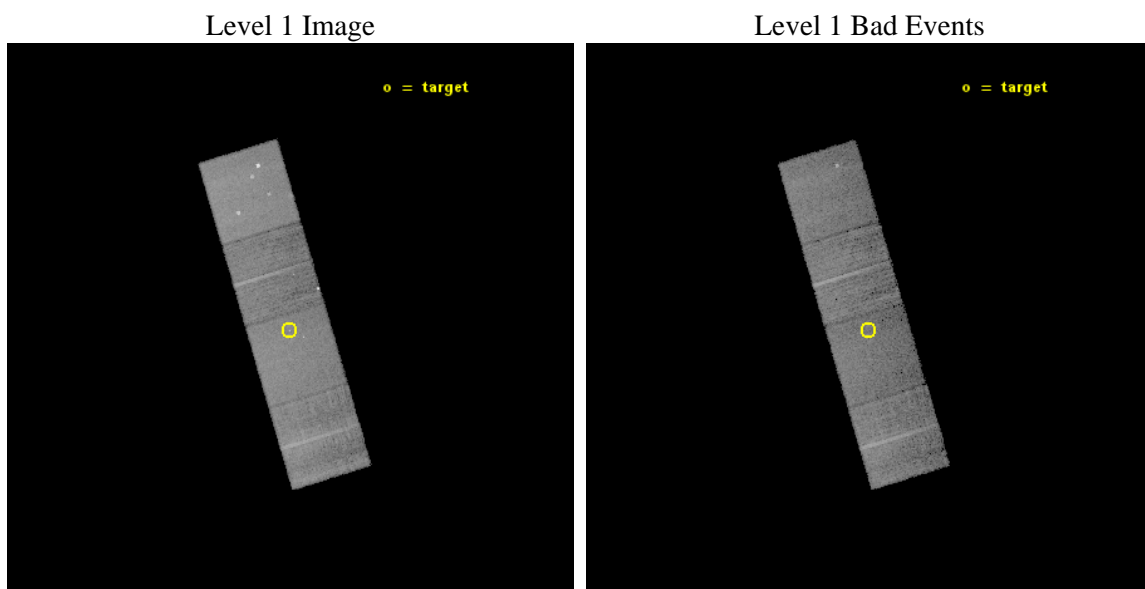
seq_num	702585	Sequence number
obs_id	13859	Observation id
title	The Radio--X-ray--BH-Mass Plane for the Smallest Supermassive Black Holes	Proposal title
observer	Dr. Kayhan Gultekin	Principal investigator
object	SDSS J101246.59+061604.7	Source name
dtcycle	0	
cycle	P	events from which exps? Prim/Second/Both
ra_targ	153.194167	Observer's specified target RA [deg]
dec_targ	6.267972	Observer's specified target Dec [deg]
ra_nom	153.19217073601	Nominal RA [deg]
dec_nom	6.270291506118	Nominal Dec [deg]
roll_nom	73.230739097243	Nominal Roll [deg]
revision	2	Processing version of data
ontime	15071.480290234	Sum of GTIs [s]
livetime	14874.56030478	Livetime [s]
ontime5	15071.439250231	Sum of GTIs [s]
ontime6	15071.398210227	Sum of GTIs [s]
ontime7	15071.480290234	Sum of GTIs [s]
ontime8	15071.357170224	Sum of GTIs [s]
l2events	119778	Number of level 2 events



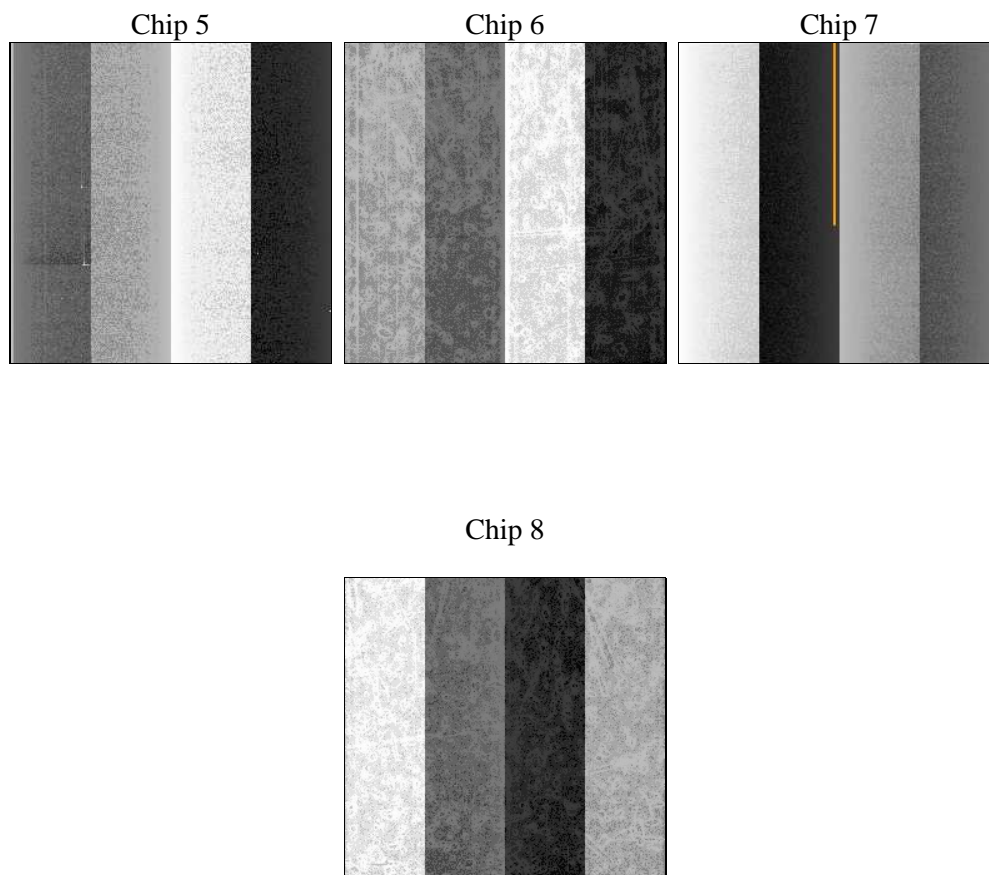
2 OBI

2.1 OBI

2.1.1 Images



2.1.2 Bias



2.1.3 Parameters

obi_num	0	Obi number	sched_exp_time	15000.000000	[s] Scheduled observation exposure time
ascdsver	10.3	Processing system revision	ontime	15071.480290234	Sum of GTIs [s]
caldsver	4.6.4	 	ontime5	15071.439250231	Sum of GTIs [s]
date	2014-11-28T10:45:26	Date and time of file creation	ontime6	15071.398210227	Sum of GTIs [s]
revision	2	Processing version of data	ontime7	15071.480290234	Sum of GTIs [s]
			ontime8	15071.357170224	Sum of GTIs [s]
			l1events	404400	Number of level 1 events

2.1.4 Events

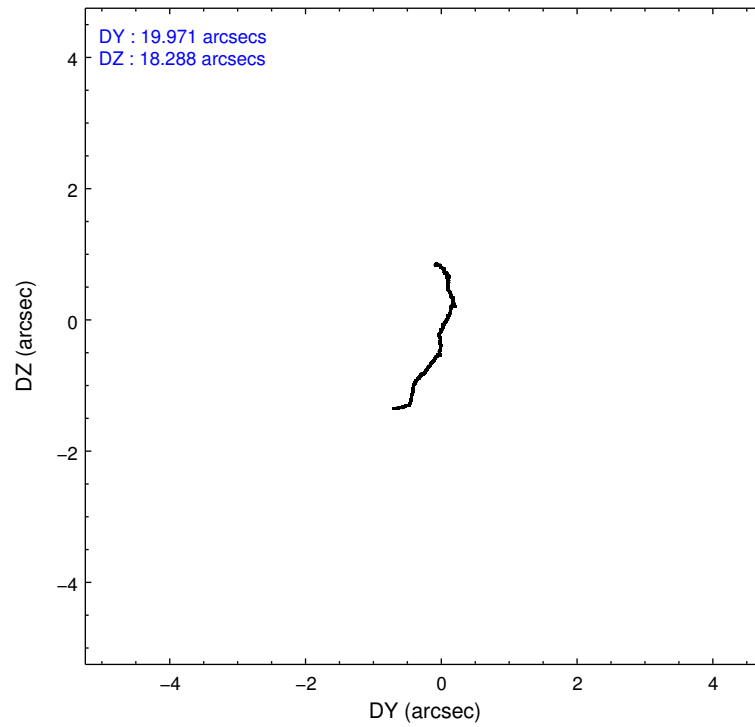
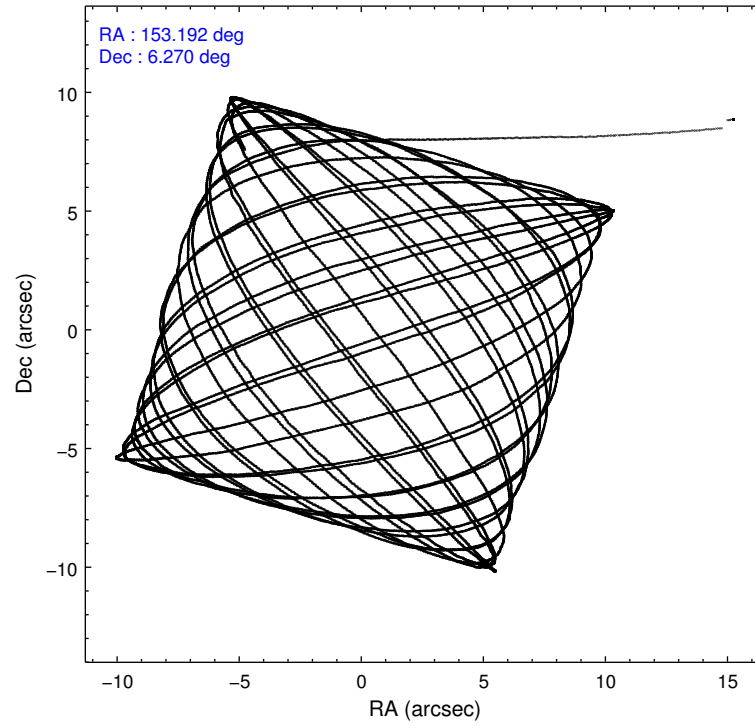
	ccd 5	ccd 6	ccd 7	ccd 8
level 1 events	127258	79276	100174	97692
rejected events	63609	67520	56127	70980
rejected %	49%	85%	56%	72%

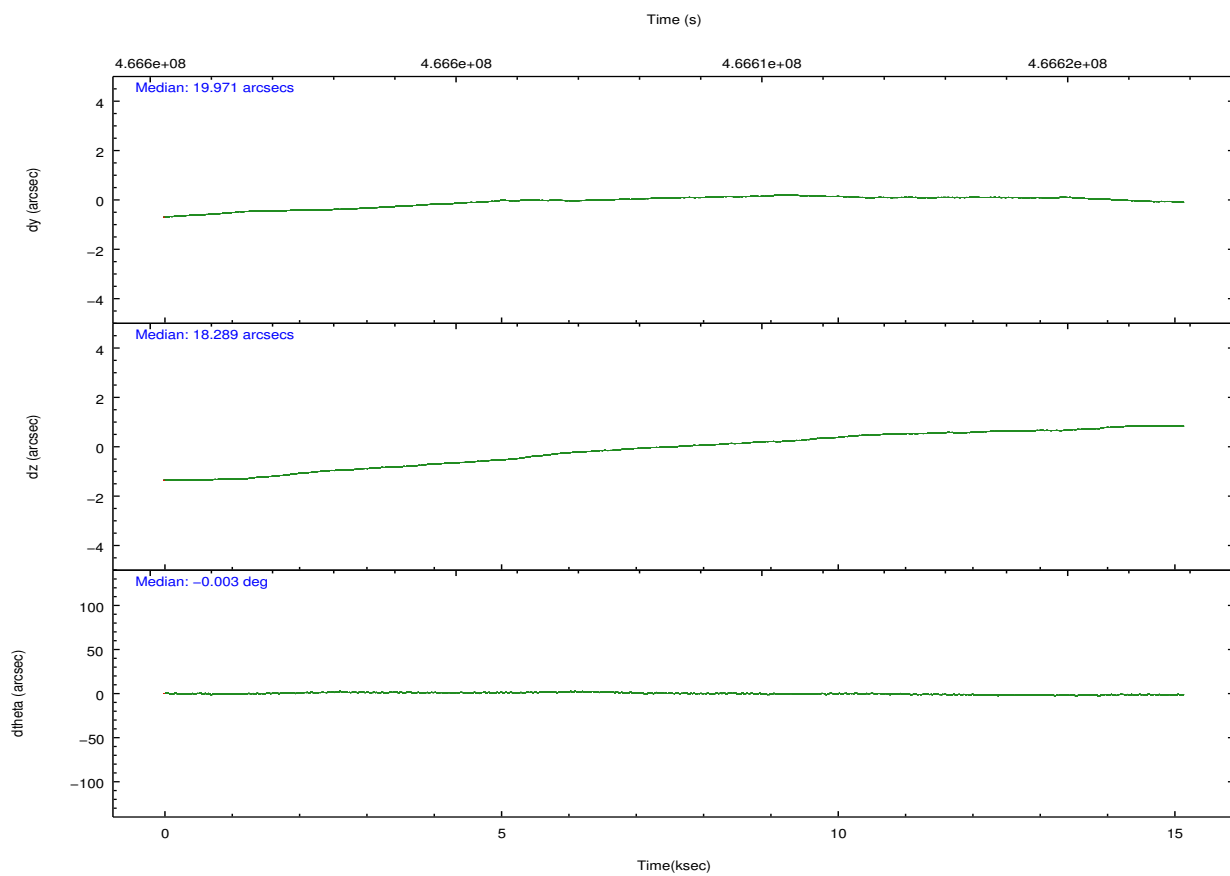
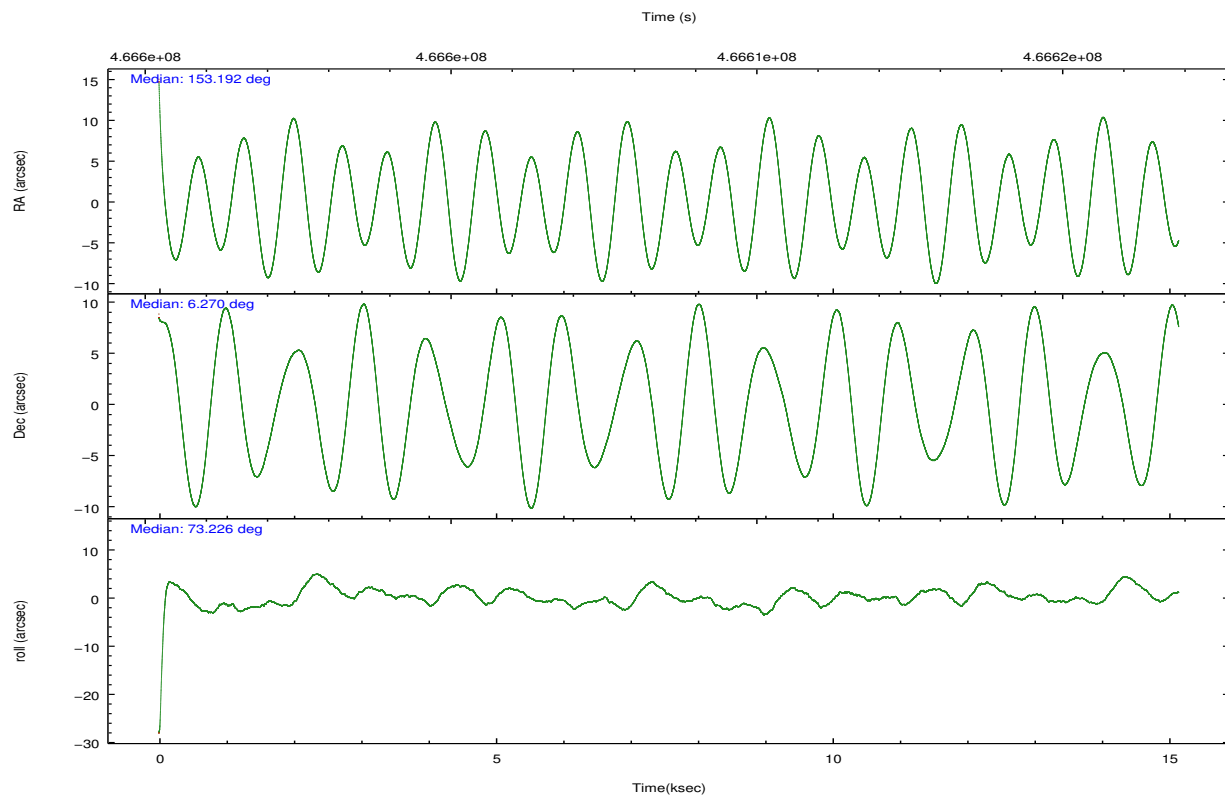
	ccd 5	ccd 6	ccd 7	ccd 8
grade 0 events	9233	5067	4124	8111
	7%	6%	4%	8%
grade 1 events	755	66	113	102
	0%	0%	0%	0%
grade 2 events	18600	2419	8911	6279
	14%	3%	8%	6%
grade 3 events	2217	1103	3719	2725
	1%	1%	3%	2%
grade 4 events	2162	999	3732	2541
	1%	1%	3%	2%
grade 5 events	9227	3907	10350	5433
	7%	4%	10%	5%
grade 6 events	31474	2172	23586	7063
	24%	2%	23%	7%
grade 7 events	53590	63543	45639	65438
	42%	80%	45%	66%

2.2 Compared Parameters

Parameter	Planned	Actual	Parameter	Planned	Actual
Instrument	ACIS	ACIS	Obspar format version number	7	7
Detector	ACIS-5678	ACIS-5678	Obspar file type	PREDICTED	ACTUAL
Grating	NONE	NONE	Obspar update status	NONE	UPDATED
Data mode	FAINT	FAINT	Number of optional ACIS chips dropped	0	0
Observation mode	POINTING	POINTING	On-chip summing requested	N	N
[deg] Pointing RA	153.198847	153.1921707360061	Subarray requested	NONE	NONE
[deg] Pointing Dec	6.243739	6.270291506117999	Alternating exposures requested	N	N
[deg] Pointing Roll	73.073411	73.23073909724337	[s] Primary exposure time	0.000000	3.1
[mm] SIM focus pos	-0.684267	-0.6828225247311905			
[mm] SIM defocus	0	0.001444936568705701			
[mm] SIM translation stage pos	-190.132523	-190.1425803651734			
[mm] SIM translation stage offset	0	0.01005778216563158			
[s] Observation start time (MET)	466601123.184000	466599963.80132			
Observation start date	2012-10-14T11:24:16	2012-10-14T11:06:03			
[s] Observation end time (MET)	466616123.184000	466617161.25224			
Observation end date	2012-10-14T15:34:16	2012-10-14T15:52:41			
Read mode	TIMED	TIMED			

2.3 Aspect



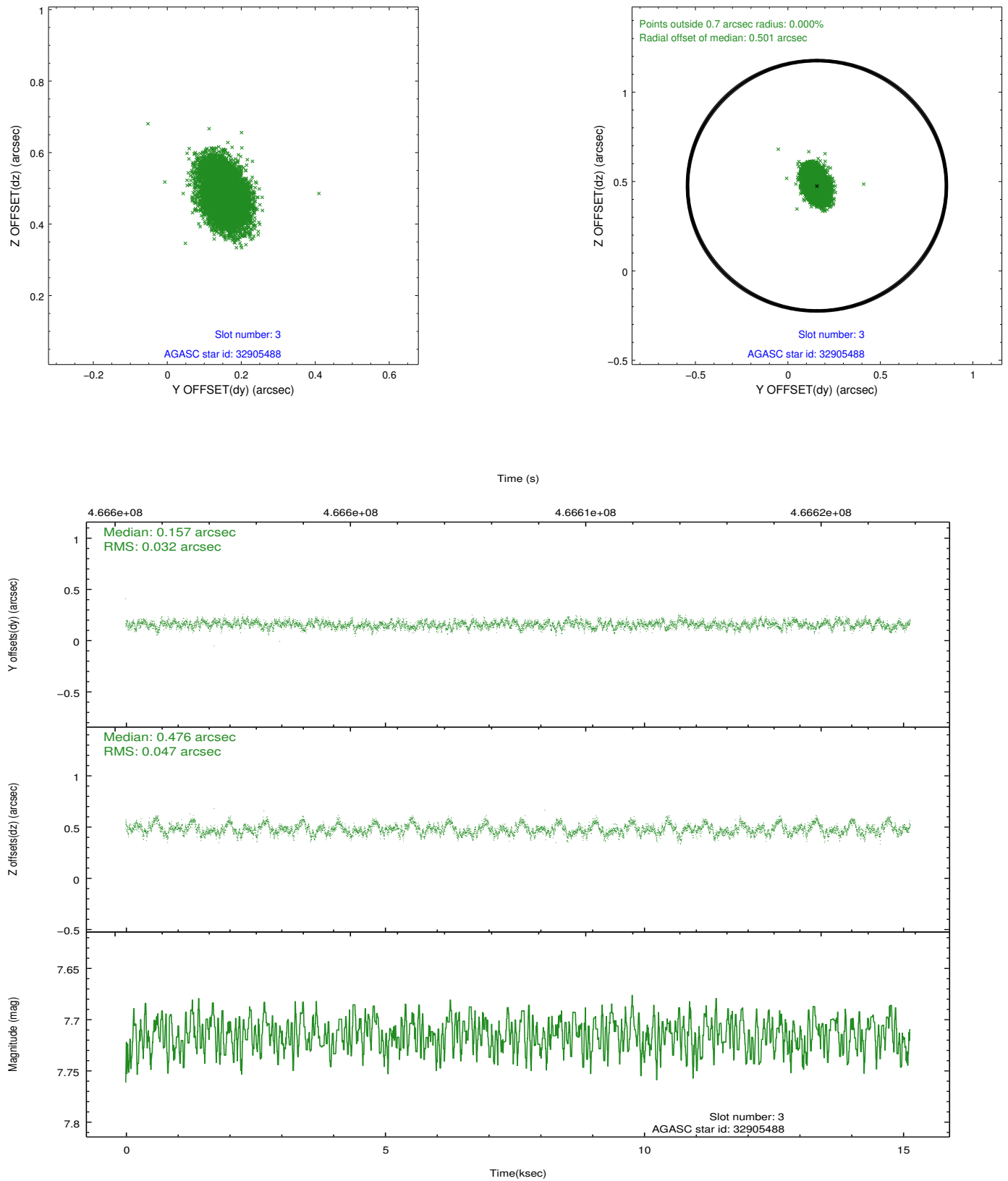


Slot Statistics

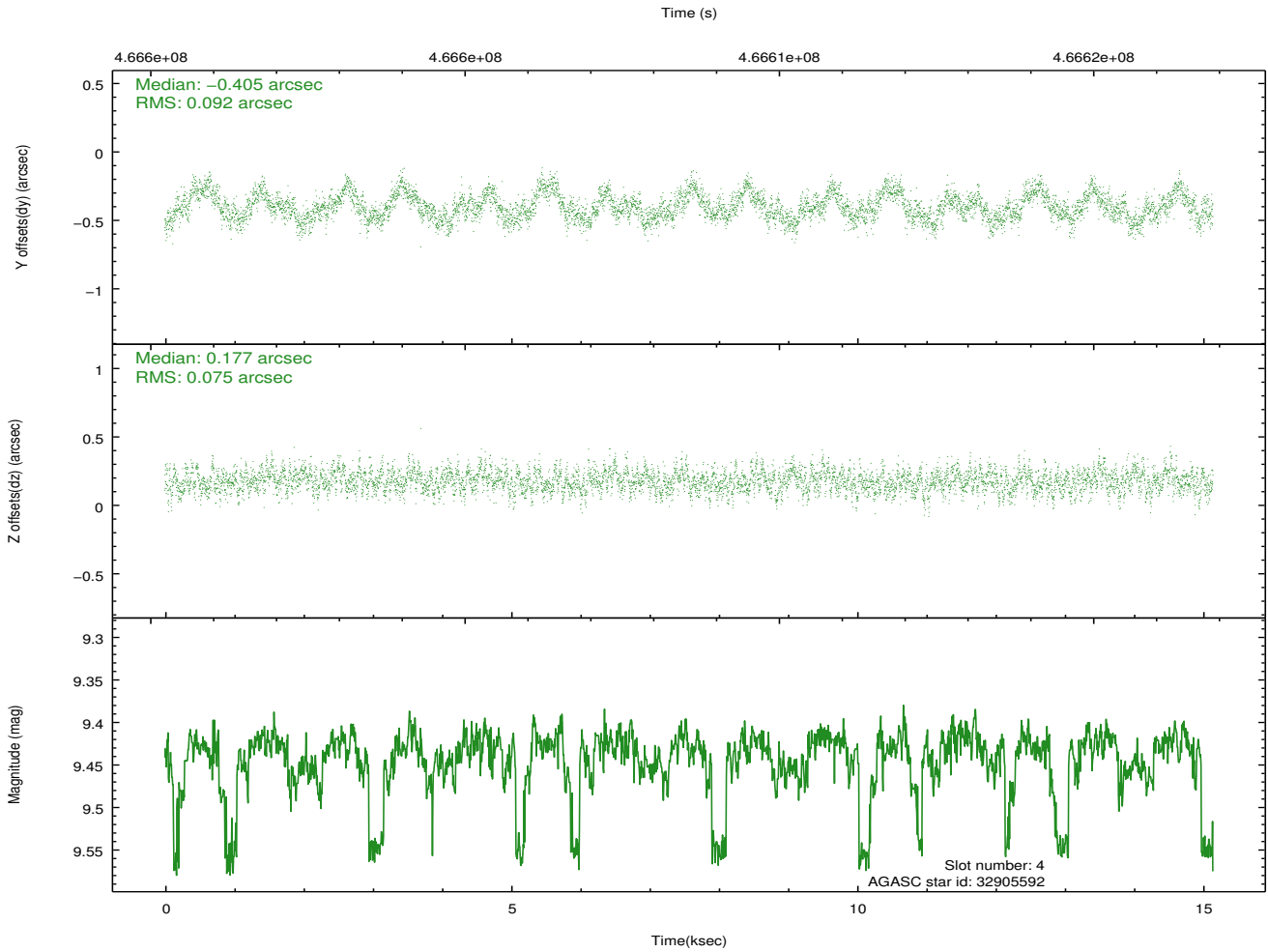
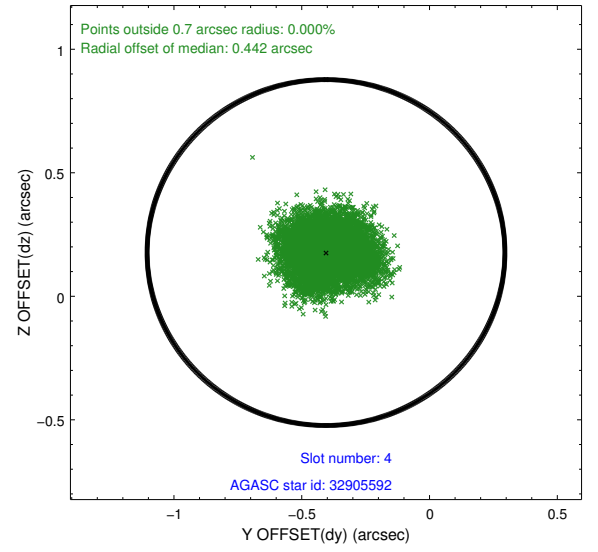
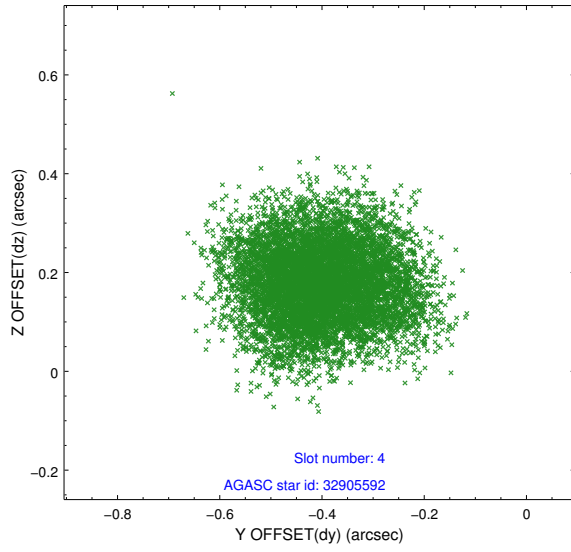
slot	status	used	id	mag	n_pts	med_dy	med_dz	dr1	dr2	ra	dec	mean_y	mean_z
0	FID		ACIS-S-2	6.95	3695	-0.113	-0.051	0.014	0.026	0.000000	0.000000	-773.14	-1739.62
1	FID		ACIS-S-4	7.04	3695	0.262	0.070	0.009	0.014	0.000000	0.000000	2140.40	168.62
2	FID		ACIS-S-5	7.06	3695	-0.178	-0.009	0.013	0.021	0.000000	0.000000	-1825.64	162.62
3	GUIDE	used	32905488	7.71	7388	0.157	0.476	0.060	0.102	153.680914	5.749452	-1198.70	-2169.16
4	GUIDE	used	32905592	9.44	7343	-0.405	0.177	0.128	0.200	152.729670	6.413217	95.23	1783.62
5	GUIDE	used	32906088	8.58	7388	-0.080	-0.305	0.086	0.139	153.112067	6.666699	1366.06	740.08
6	GUIDE	used	32910752	9.29	7386	0.197	-0.127	0.121	0.186	152.943593	6.207682	-389.43	836.29
7	GUIDE	used	32911872	7.50	7387	0.131	-0.221	0.067	0.106	152.796739	6.168055	-678.99	1297.66

2.4 Star Slots

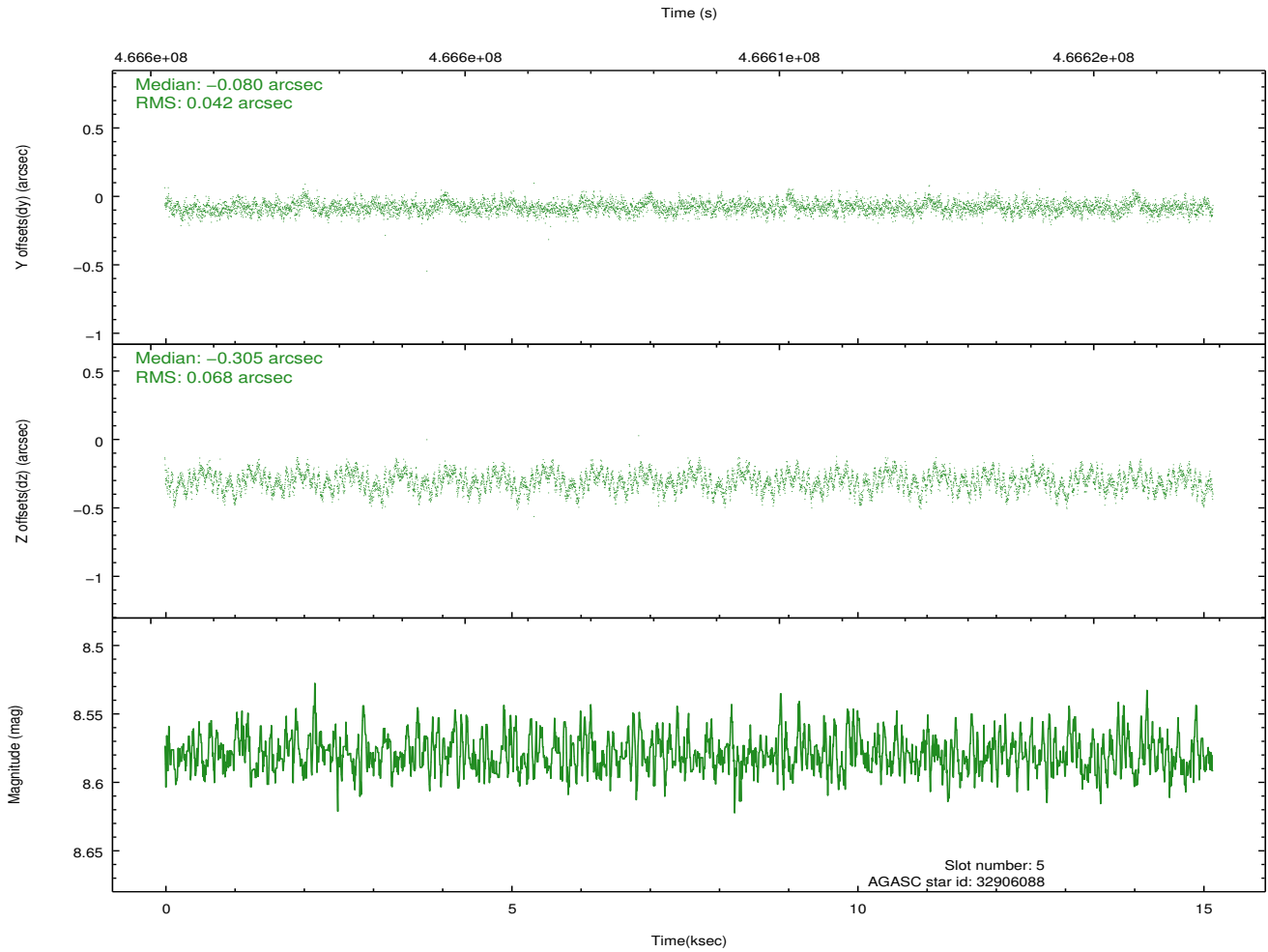
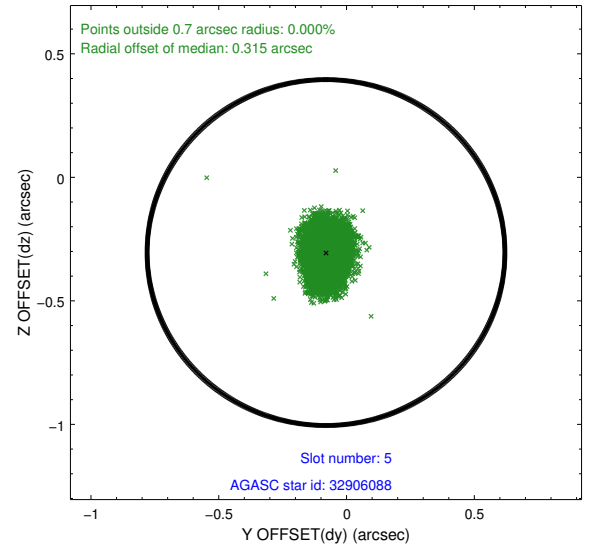
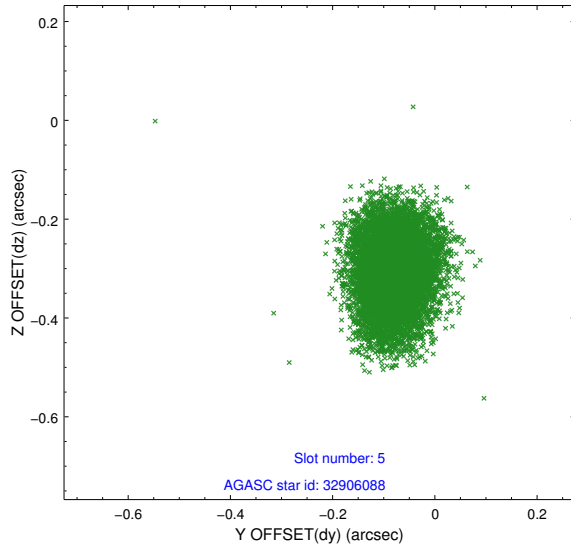
2.4.1 Slot 3



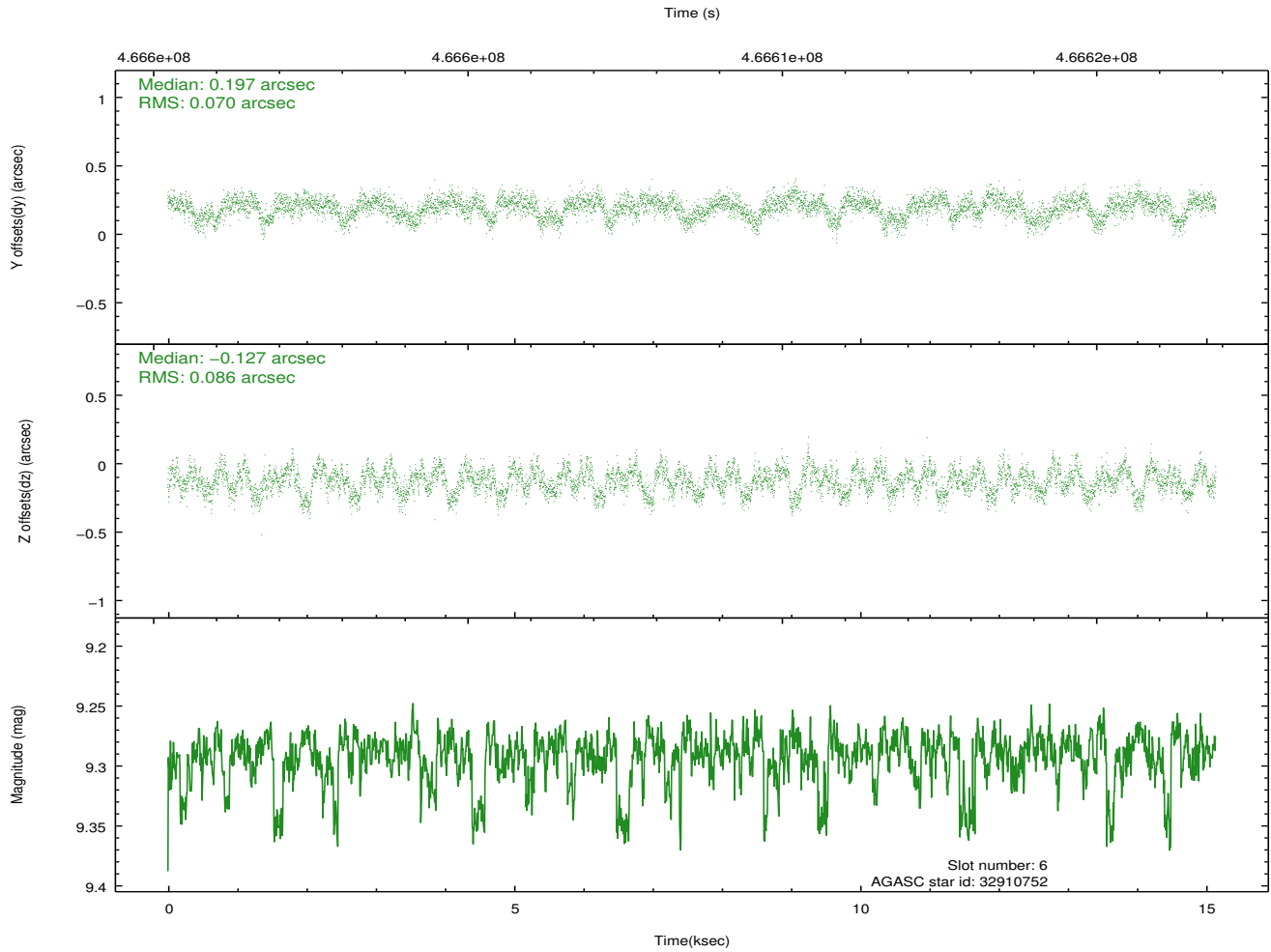
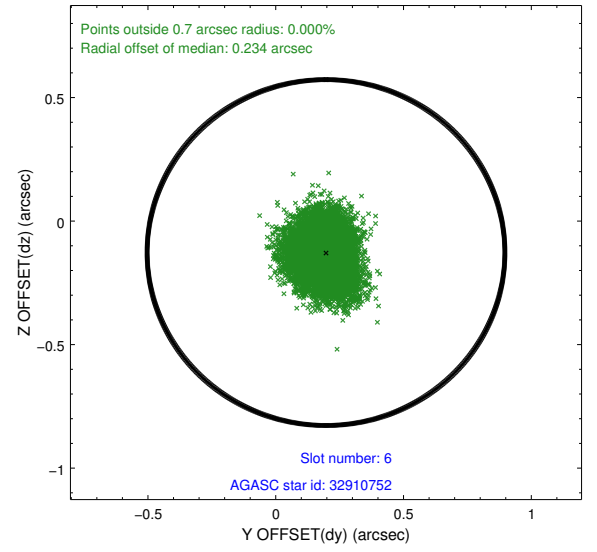
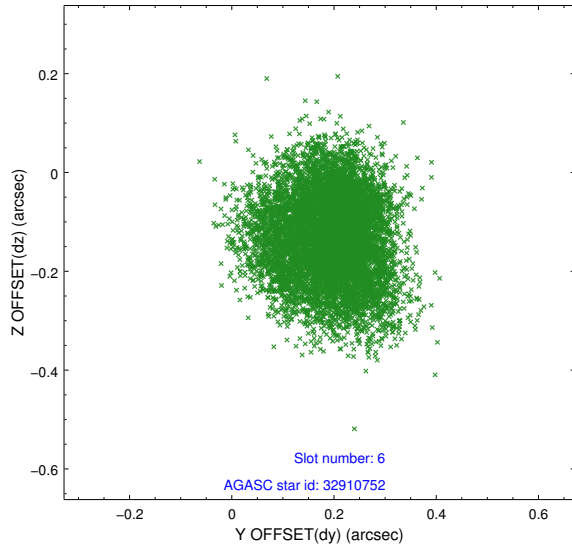
2.4.2 Slot 4



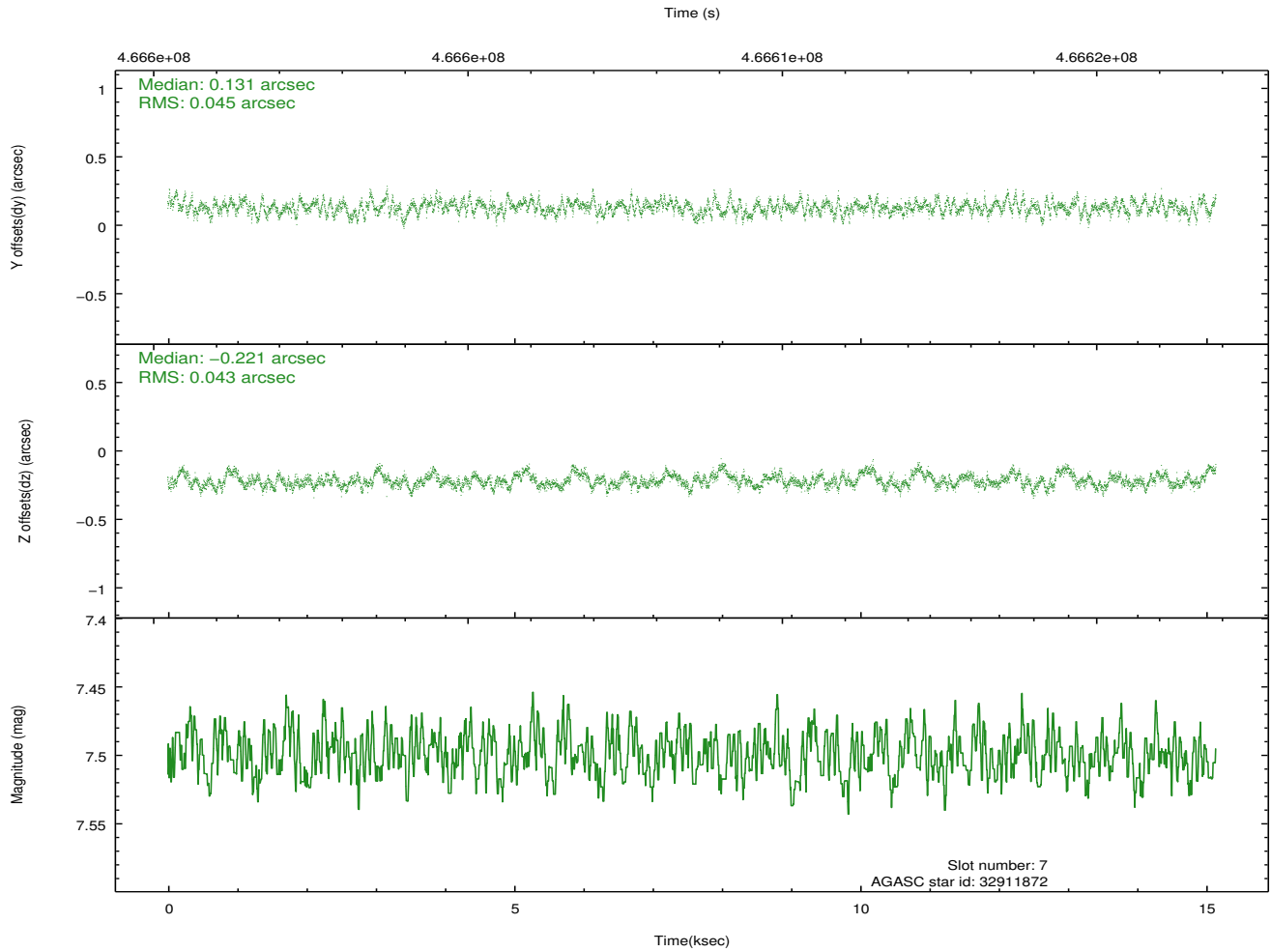
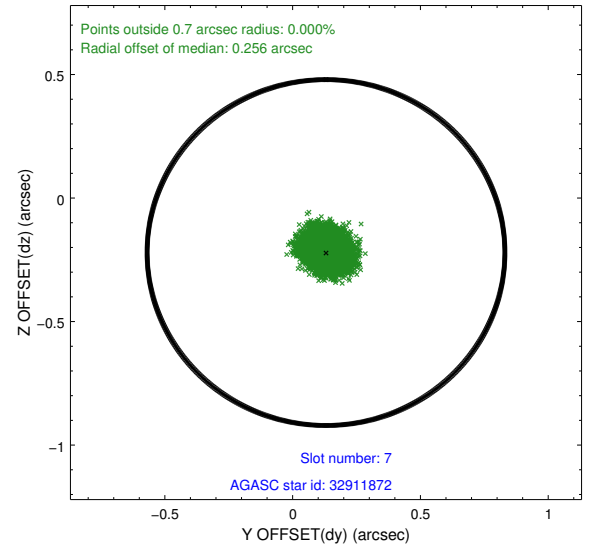
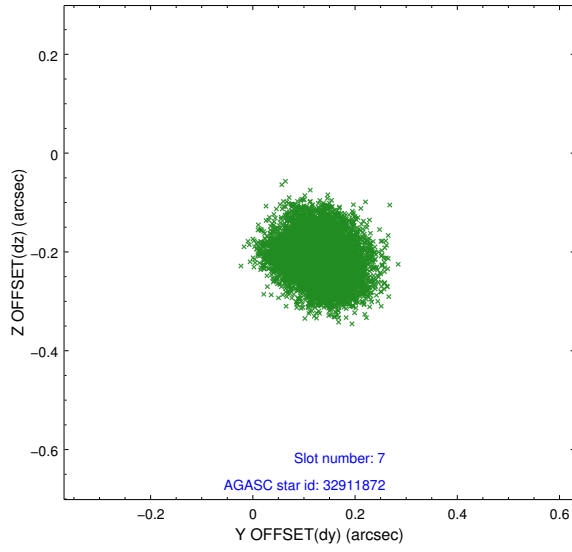
2.4.3 Slot 5



2.4.4 Slot 6

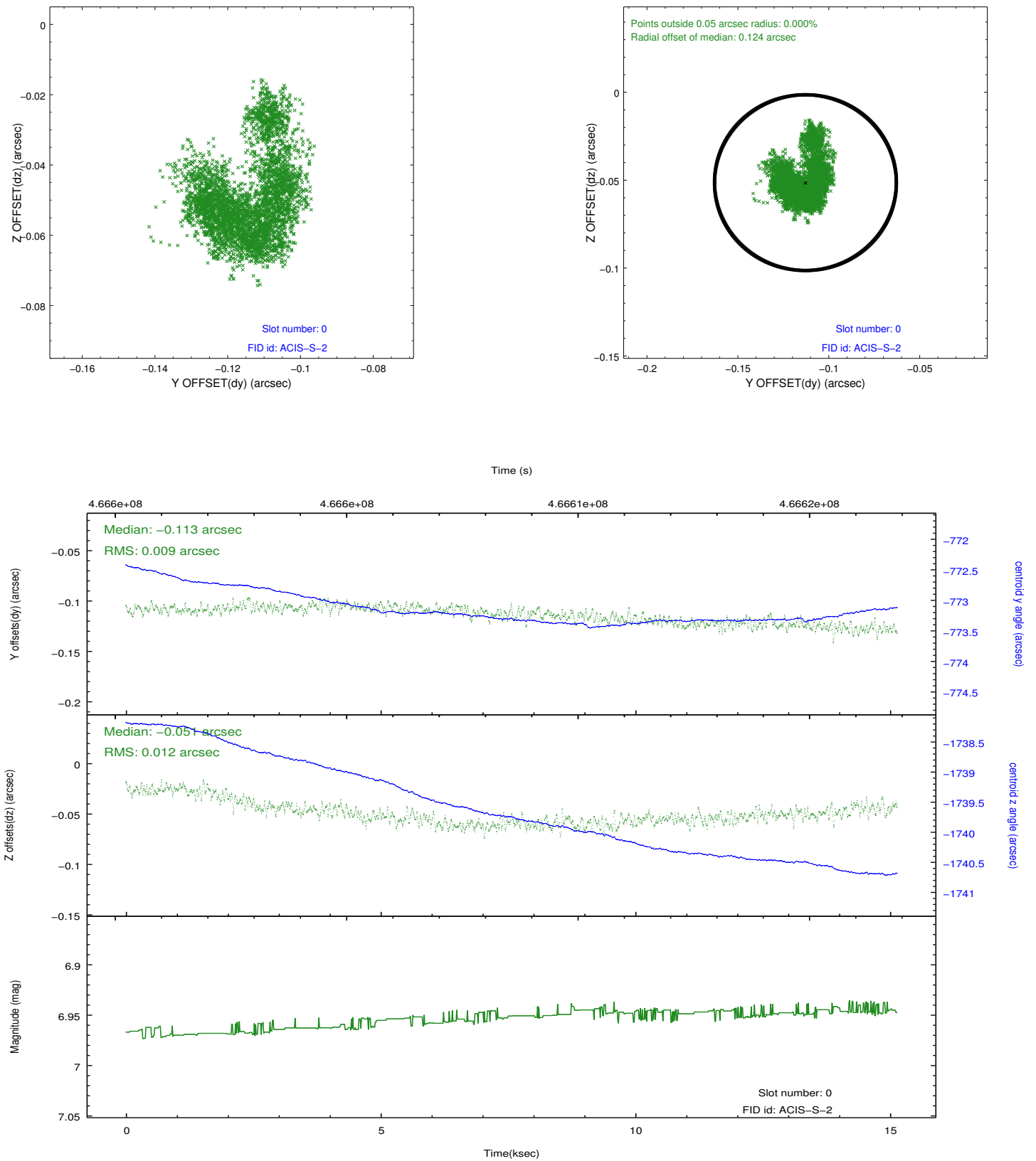


2.4.5 Slot 7

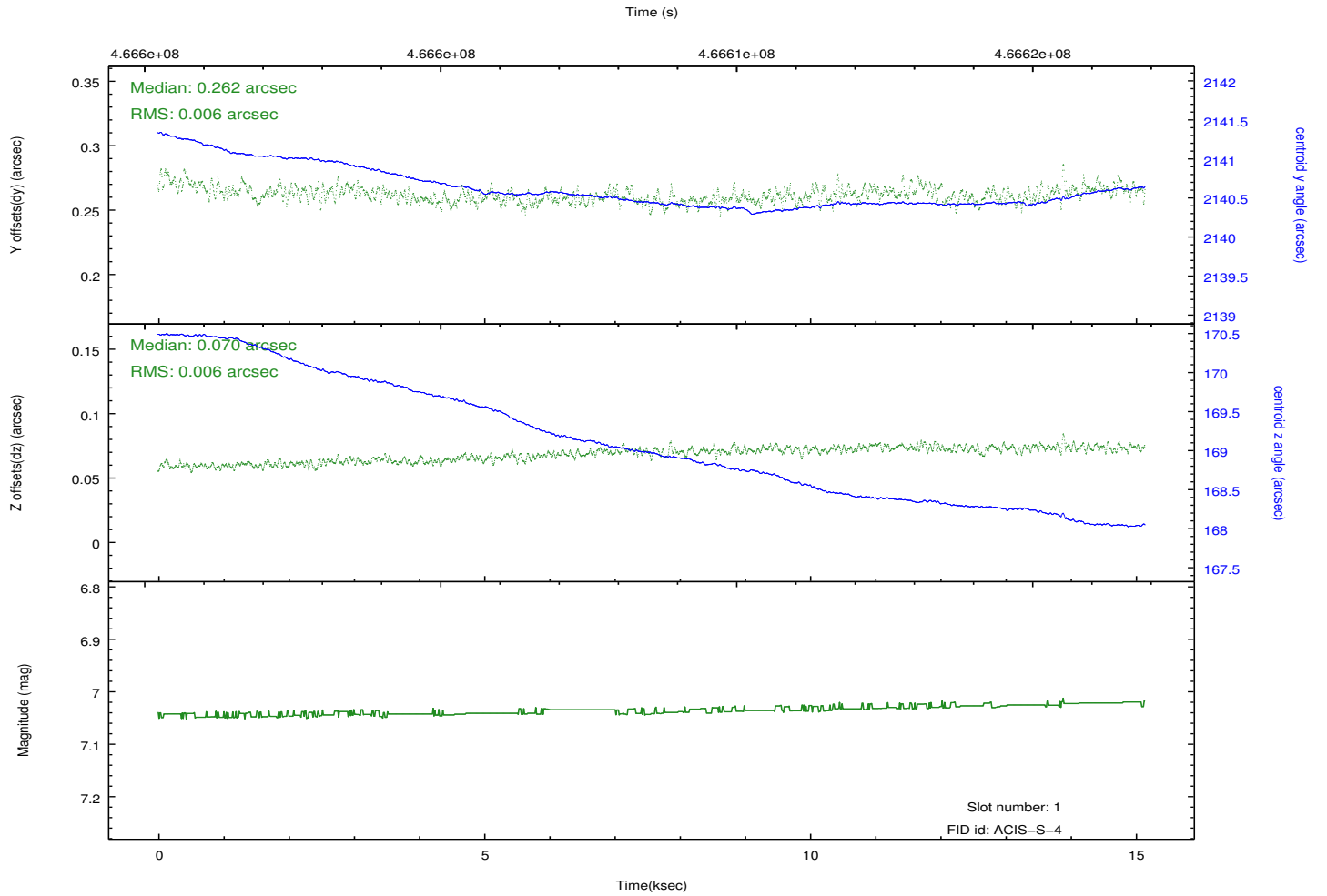
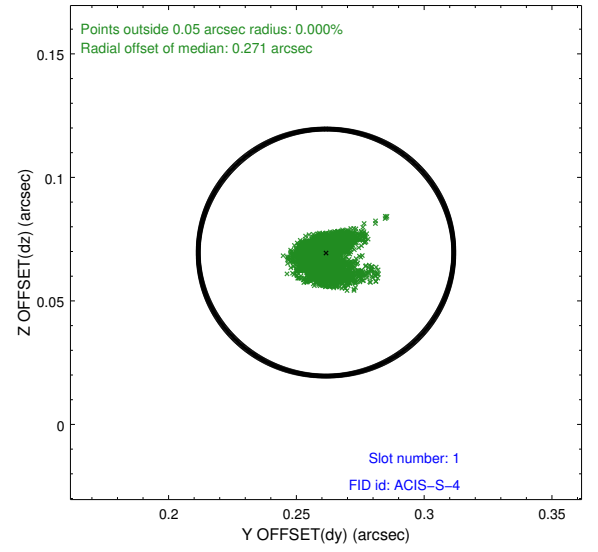
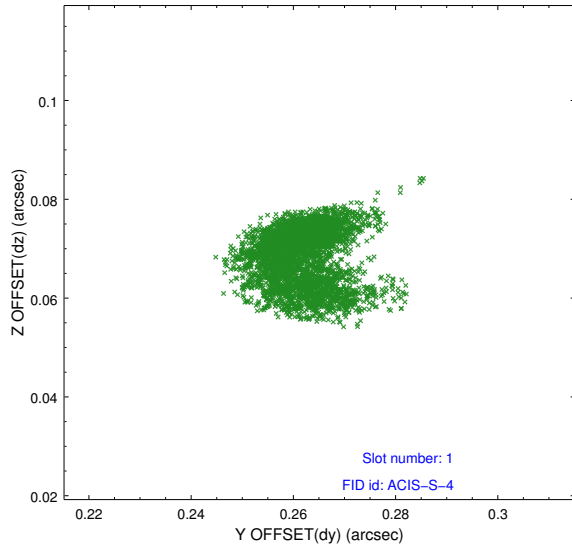


2.5 FID Slots

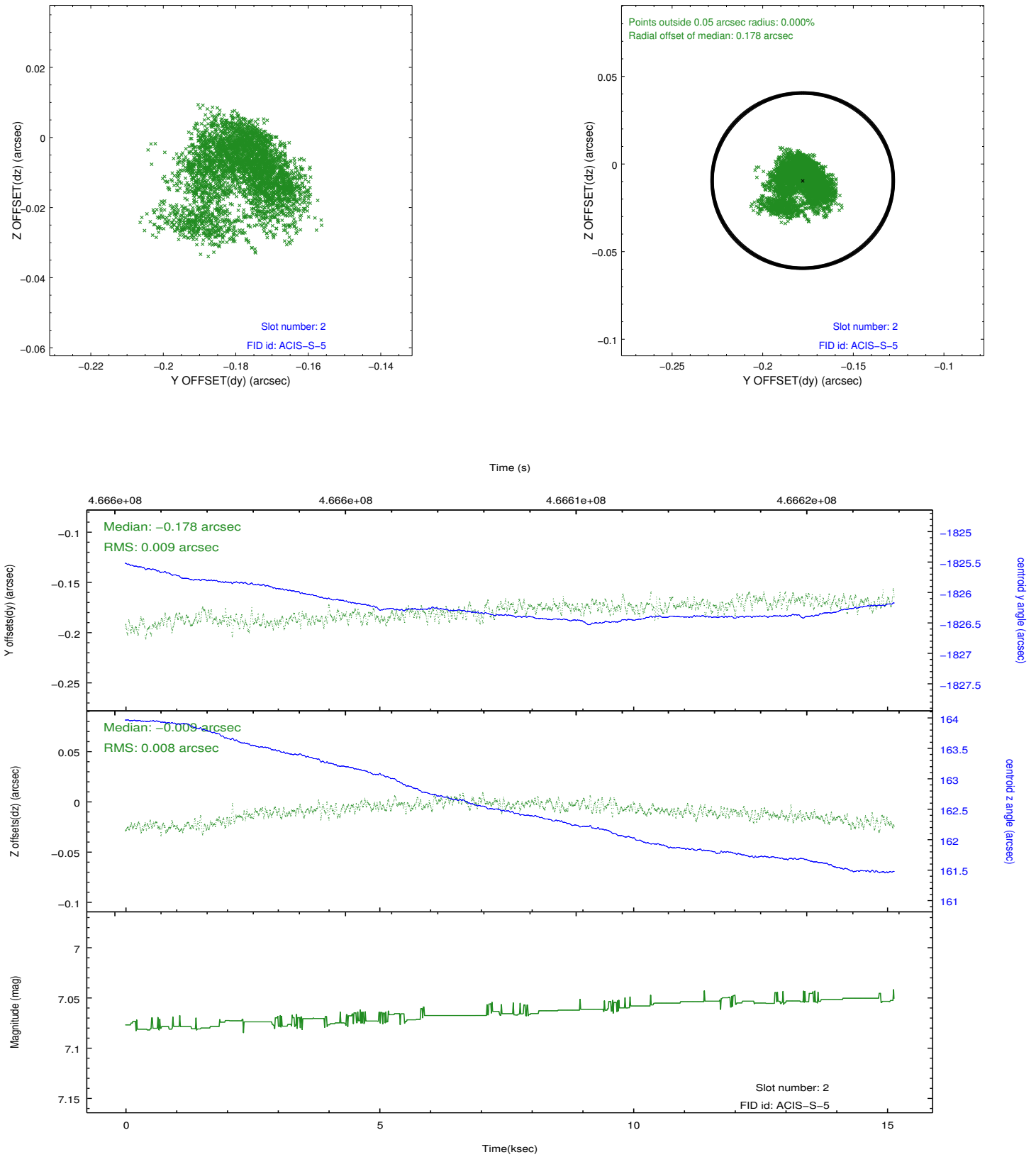
2.5.1 Slot 0



2.5.2 Slot 1



2.5.3 Slot 2



A Summary

A.1 Status

V&V Scientist	Jen Lauer
V&V Date (YYYY-MM-DD)	2014.12.03
V&V Edition	1
V&V Disposition and Status	OK
V&V Charge Time	15.071480290234

A.2 Comments

These data have been reprocessed with new aspect alignment calibration files that correct small mean offsets (up to 0.4 arcsecs) and improve overall astrometric accuracy. The new calibration was determined using data from the time period being reprocessed and was performed using cross-correlation of X-ray sources with radio and optical counterparts.