

V&V Reference Report

L2 ASCDS Version : 8.4.3

Observation 13363 - L2 Version 2
Chandra X-Ray Center

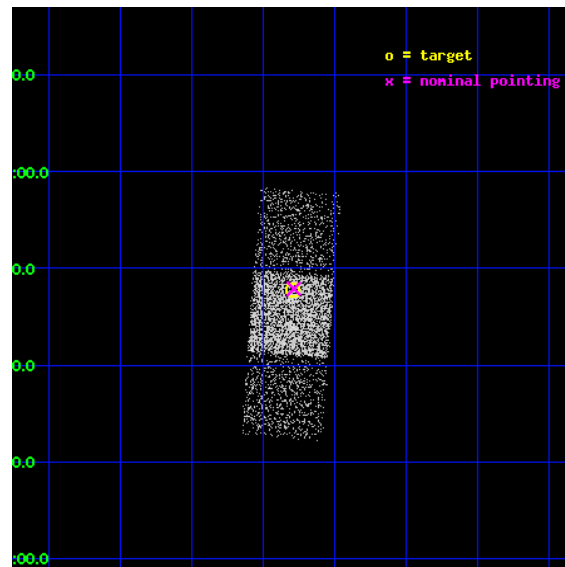
L2 Processing Date : Mar 23 2012

Contents

1	Front	2
2	OBI	3
2.1	OBI	3
2.1.1	Images	3
2.1.2	Bias	3
2.1.3	Parameters	4
2.1.4	Events	4
2.2	Compared Parameters	5
2.3	Aspect	6
2.4	Star Slots	9
2.4.1	Slot 3	9
2.4.2	Slot 4	10
2.4.3	Slot 5	11
2.4.4	Slot 7	12
2.5	FID Slots	13
2.5.1	Slot 0	13
2.5.2	Slot 1	14
2.5.3	Slot 2	15
A	Summary	16
A.1	Status	16
A.2	Comments	16

1 Front

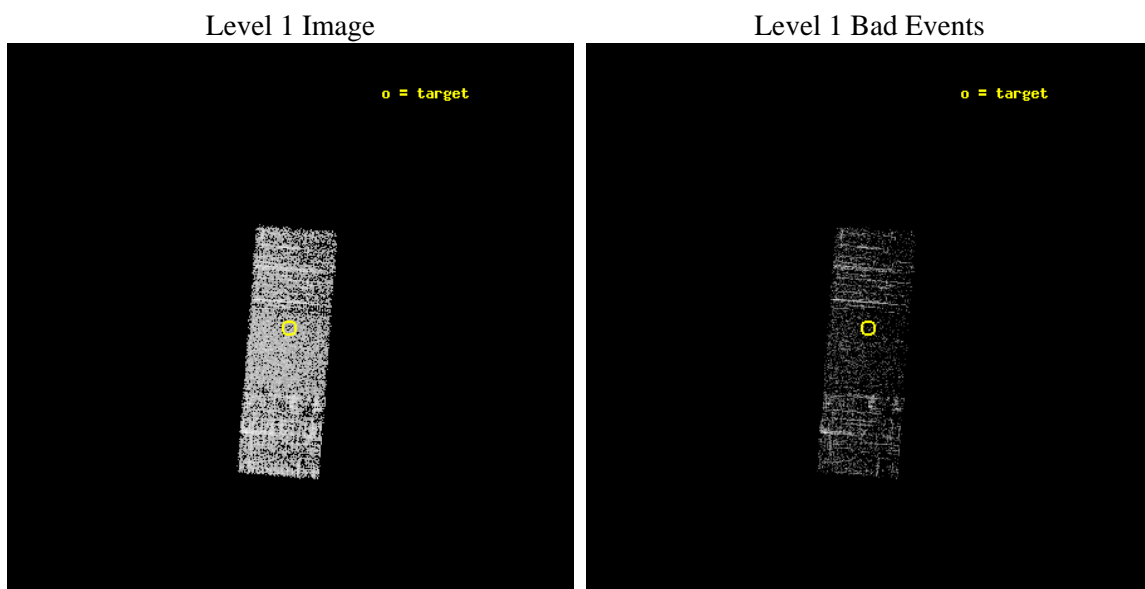
seq_num	702570	Sequence number
obs_id	13363	Observation id
title	A Large, Economical Snapshot Survey of the Most-Luminous Quasars from the Sloan Digital Sky Survey	Proposal title
observer	Prof. Gordon Garmire	Principal investigator
object	SDSS J1457+0247	Source name
dtcycle	0	
cycle	P	events from which exps? Prim/Second/Both
ra_targ	224.324167	Observer's specified target RA [deg]
dec_targ	2.7965	Observer's specified target Dec [deg]
ra_nom	224.32125530104	Nominal RA [deg]
dec_nom	2.7979005202429	Nominal Dec [deg]
roll_nom	94.495181976121	Nominal Roll [deg]
revision	2	Processing version of data
ontime	1582.7812775373	Sum of GTIs [s]
livetime	1562.1010749197	Livetime [s]
ontime6	1582.740237534	Sum of GTIs [s]
ontime7	1582.7812775373	Sum of GTIs [s]
ontime8	1582.6991975307	Sum of GTIs [s]
l2events	6067	Number of level 2 events



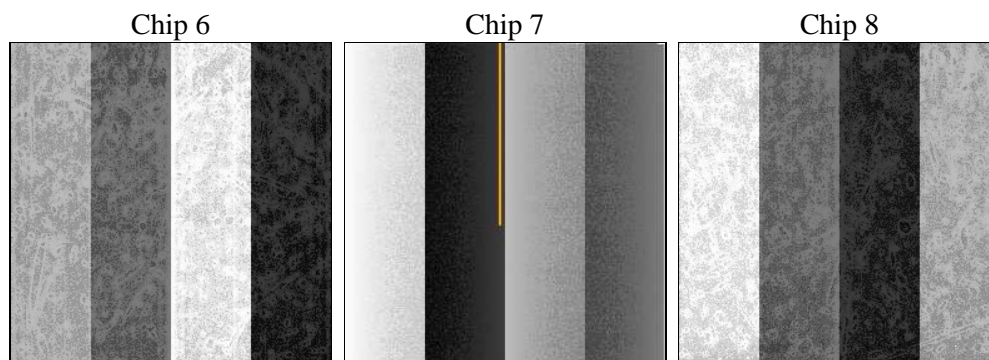
2 OBI

2.1 OBI

2.1.1 Images



2.1.2 Bias



2.1.3 Parameters

obi_num	0	Obi number	sched_exp_time	1500.000000	[s] Scheduled observation exposure time
ascdsver	8.4.3	Processing system revision	ontime	1582.7812775373	Sum of GTIs [s]
caldbver	4.4.8	 	ontime6	1582.740237534	Sum of GTIs [s]
date	2012-03-23T16:47:06	Date and time of file creation	ontime7	1582.7812775373	Sum of GTIs [s]
revision	2	Processing version of data	ontime8	1582.6991975307	Sum of GTIs [s]
			l1events	28403	Number of level 1 events

2.1.4 Events

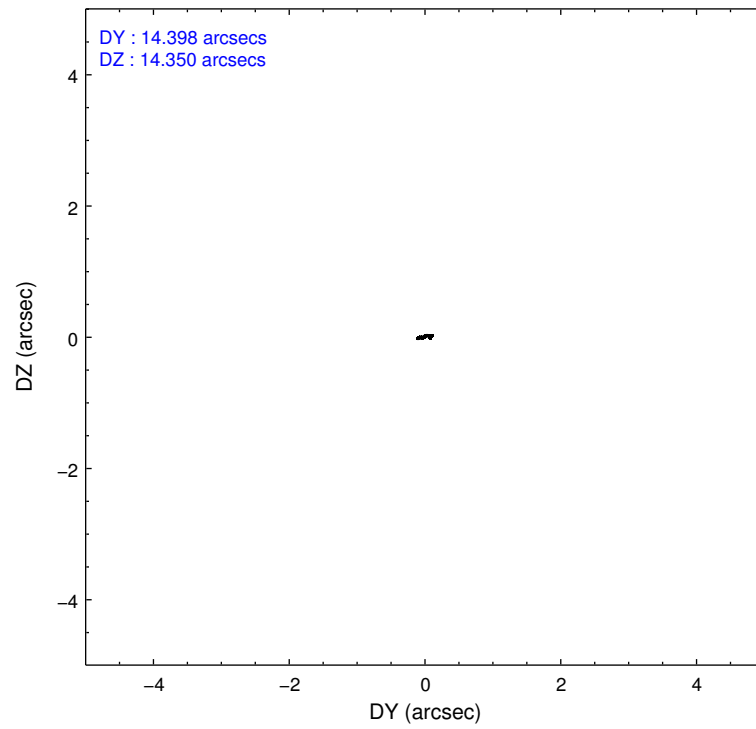
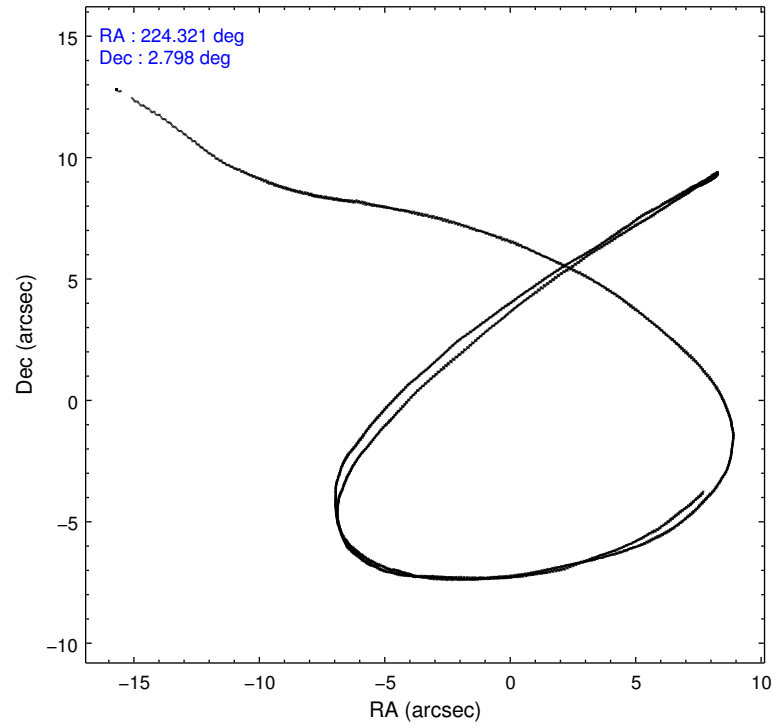
	ccd 6	ccd 7	ccd 8
level 1 events	8270	9010	11123
rejected events	7320	4544	8058
rejected %	88%	50%	72%

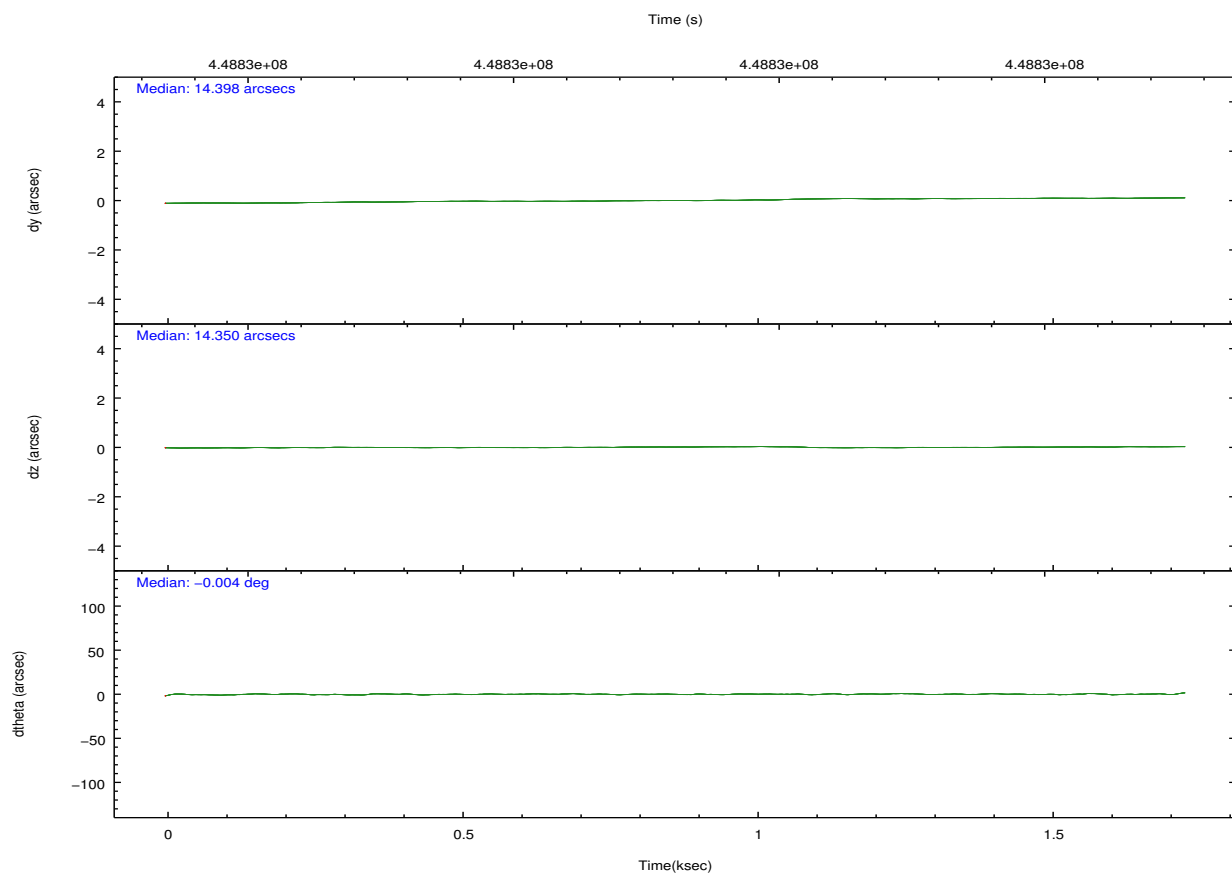
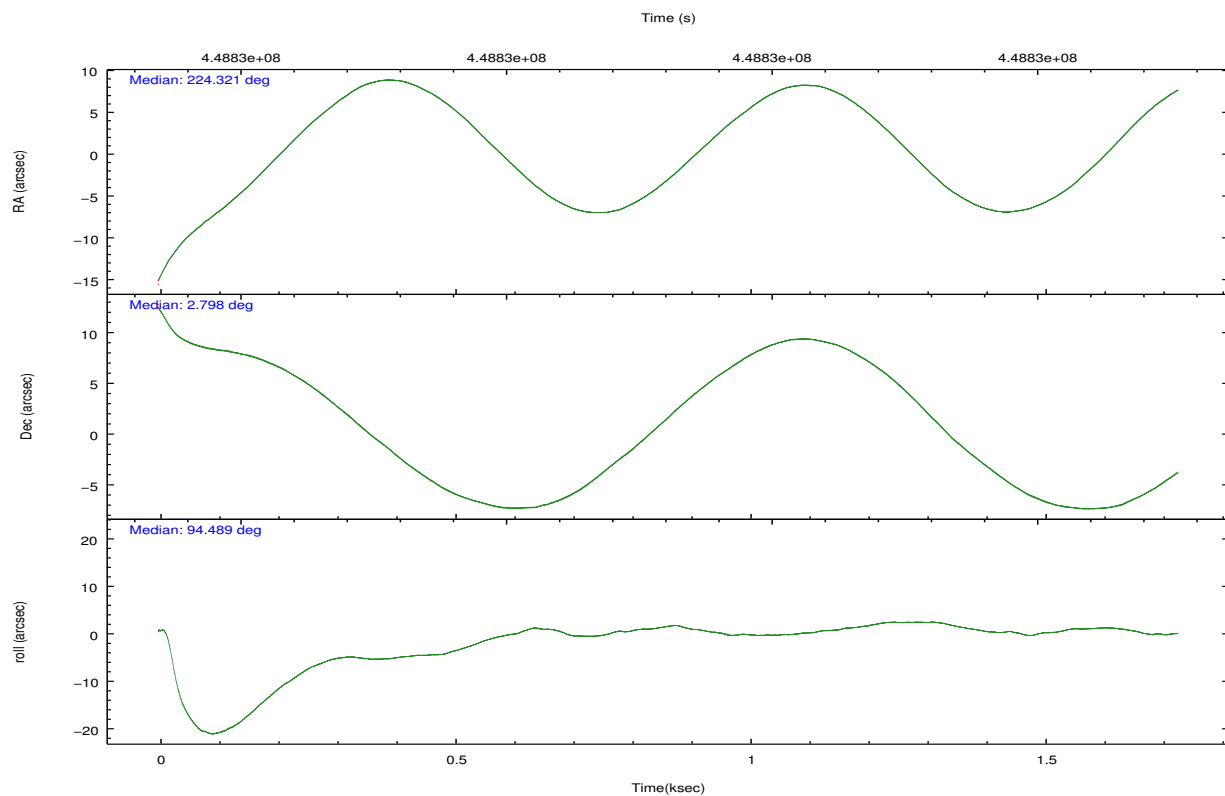
	ccd 6	ccd 7	ccd 8
grade 0 events	347	443	855
	4%	4%	7%
grade 1 events	3	22	7
	0%	0%	0%
grade 2 events	229	923	662
	2%	10%	5%
grade 3 events	97	416	366
	1%	4%	3%
grade 4 events	80	388	352
	0%	4%	3%
grade 5 events	351	948	531
	4%	10%	4%
grade 6 events	198	2315	832
	2%	25%	7%
grade 7 events	6965	3555	7518
	84%	39%	67%

2.2 Compared Parameters

Parameter	Planned	Actual	Parameter	Planned	Actual
Instrument	ACIS	ACIS	Obspar format version number	7	7
Detector	ACIS-678	ACIS-678	Obspar file type	PREDICTED	ACTUAL
Grating	NONE	NONE	Obspar update status	NONE	UPDATED
Data mode	VFAINT	VFAINT	Number of optional ACIS chips dropped	0	0
Observation mode	POINTING	POINTING	On-chip summing requested	N	N
[deg] Pointing RA	224.337296	224.3212553010434	Subarray requested	NONE	NONE
[deg] Pointing Dec	2.775596	2.797900520242885	Alternating exposures requested	N	N
[deg] Pointing Roll	94.337608	94.49518197612062	[s] Primary exposure time	0.000000	3.1
[mm] SIM focus pos	-0.684267	-0.6828225247311905			
[mm] SIM defocus	0	0.001444936568705701			
[mm] SIM translation stage pos	-190.132523	-190.1425803651734			
[mm] SIM translation stage offset	0	0.01005778216563158			
[s] Observation start time (MET)	448825663.184000	448824672.69459			
Observation start date	2012-03-22T17:46:37	2012-03-22T17:31:12			
[s] Observation end time (MET)	448827163.184000	448827922.45727			
Observation end date	2012-03-22T18:11:37	2012-03-22T18:25:22			
Read mode	TIMED	TIMED			

2.3 Aspect



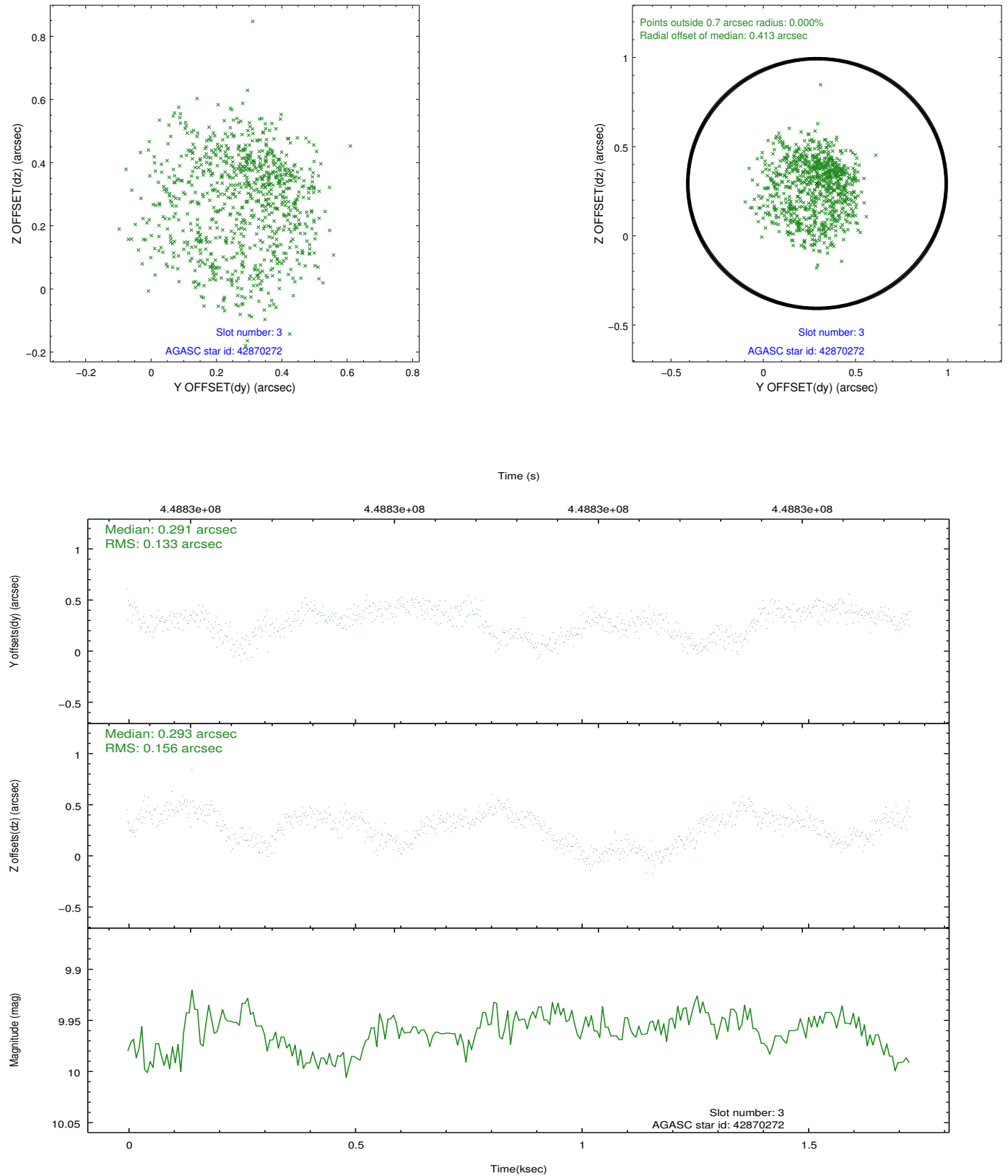


Slot Statistics

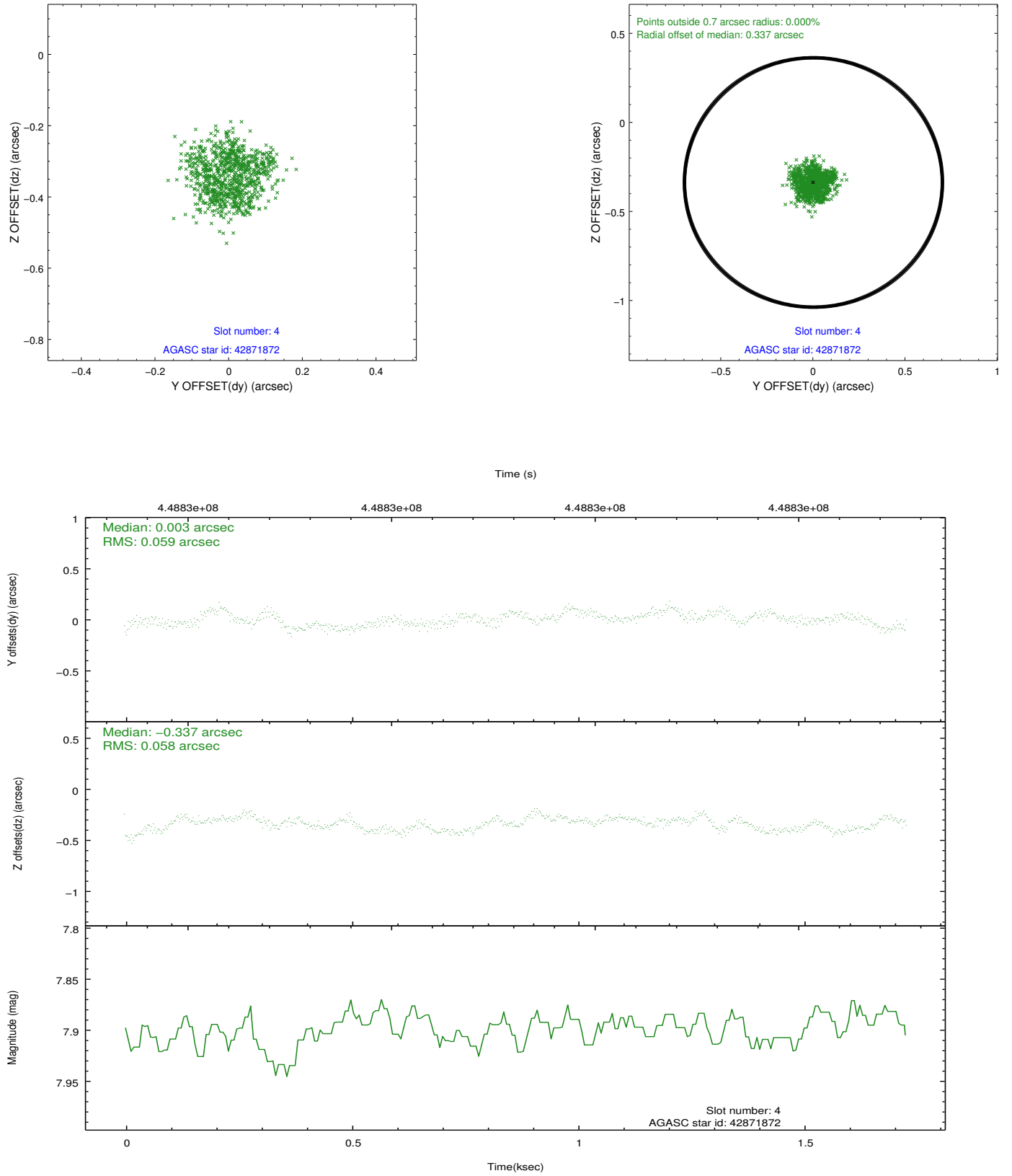
slot	status	id	mag	n_pts	med_dy	med_dz	dr1	dr2	ra	dec	mean_y	mean_z
0	FID	ACIS-S-2	6.96	422	-0.101	-0.046	0.007	0.011	0.000000	0.000000	-767.46	-1735.71
1	FID	ACIS-S-4	7.05	422	0.262	0.061	0.005	0.009	0.000000	0.000000	2144.43	168.93
2	FID	ACIS-S-5	7.08	422	-0.193	-0.006	0.007	0.011	0.000000	0.000000	-1815.51	166.87
3	GUIDE	42870272	9.96	843	0.291	0.293	0.224	0.342	224.637271	2.209455	-2113.37	-922.56
4	GUIDE	42871872	7.90	844	0.003	-0.337	0.091	0.129	223.733816	2.418665	-1119.25	2259.44
5	GUIDE	43254720	10.17	844	0.016	0.268	0.216	0.339	224.667824	2.931288	467.45	-1223.89
6	OMITTED		0.00	0	0.000	0.000	0.000	0.000	0.000000	0.000000	0.00	0.00
7	GUIDE	43264016	7.32	843	-0.298	-0.184	0.085	0.127	224.070131	3.416127	2371.97	781.36

2.4 Star Slots

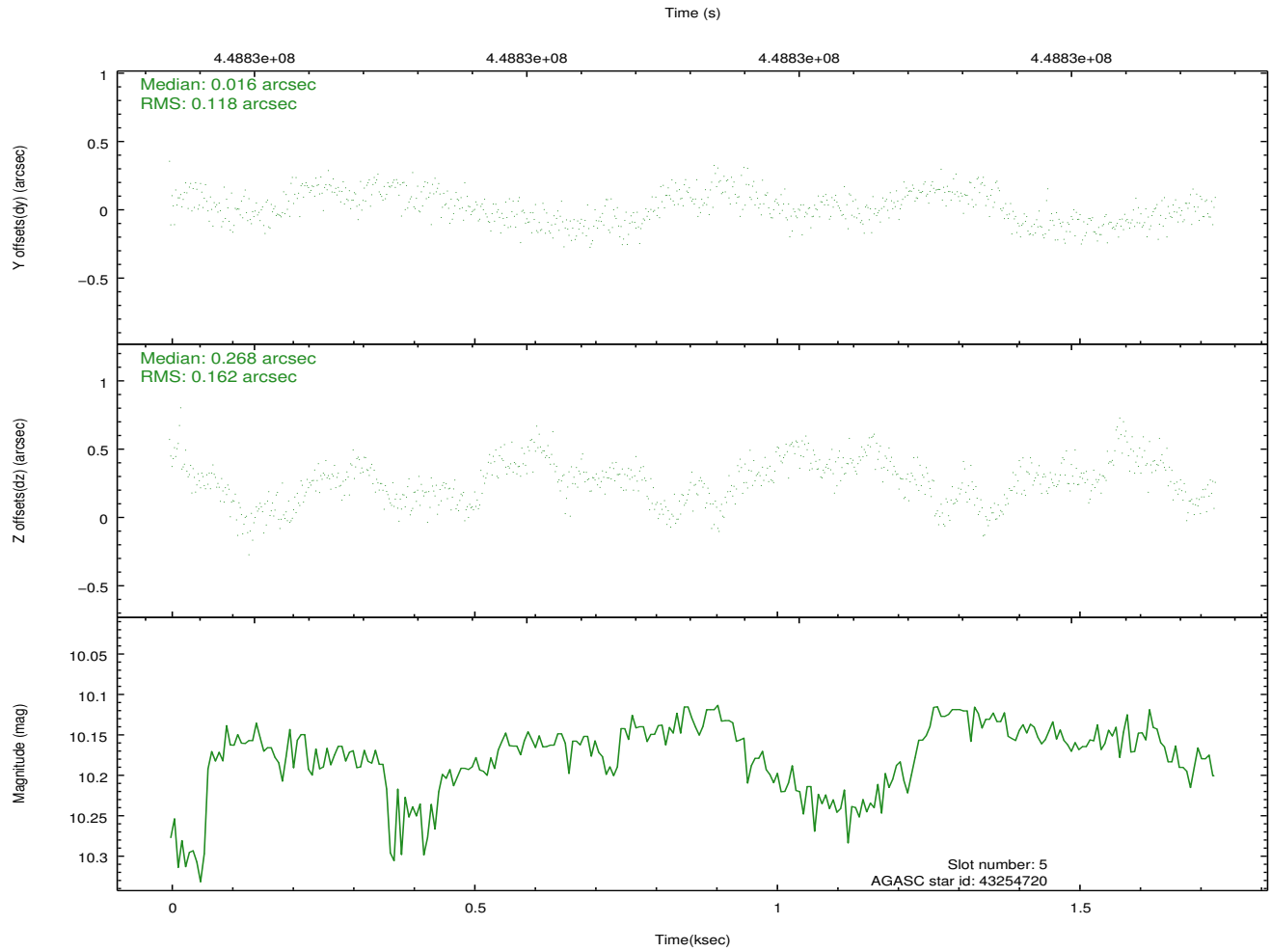
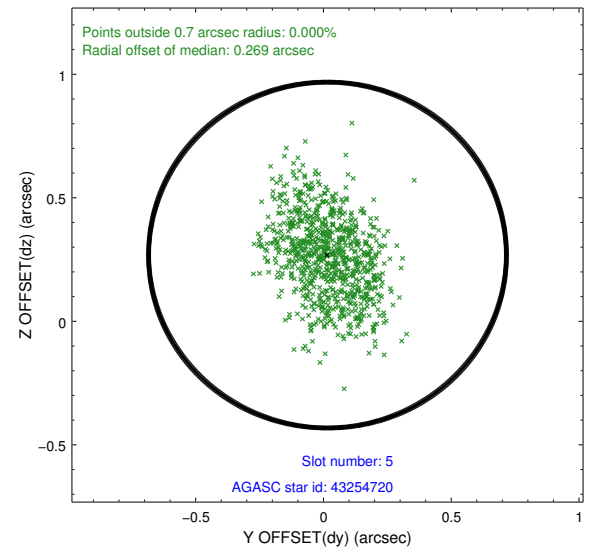
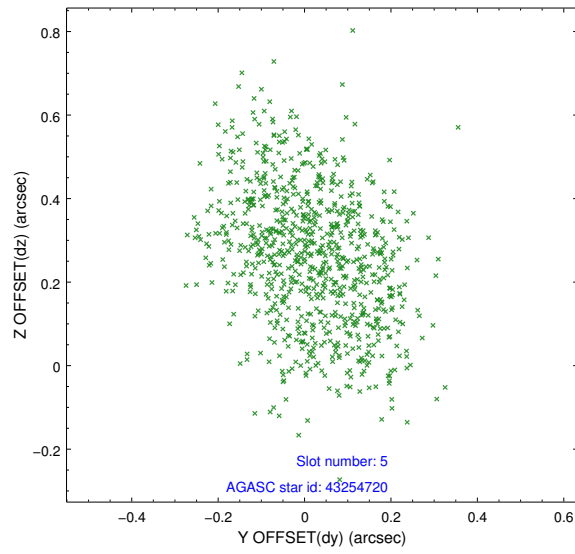
2.4.1 Slot 3



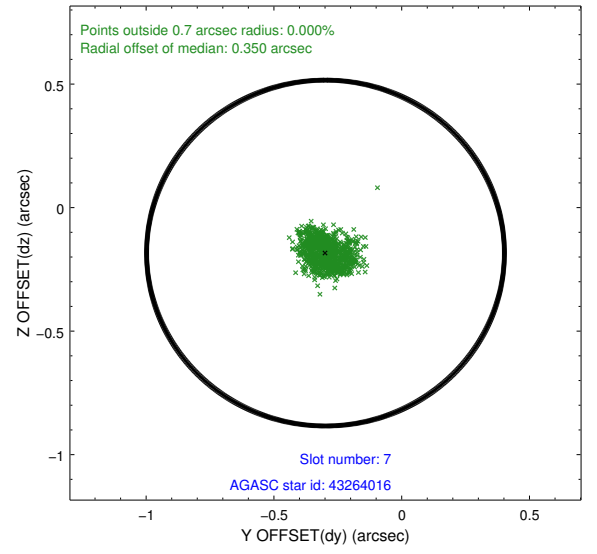
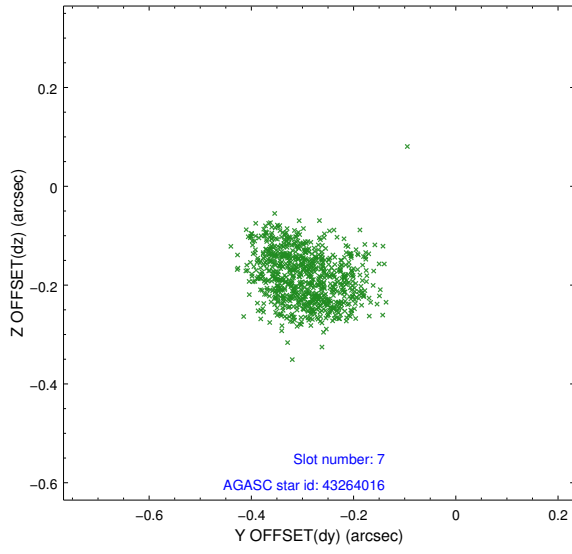
2.4.2 Slot 4



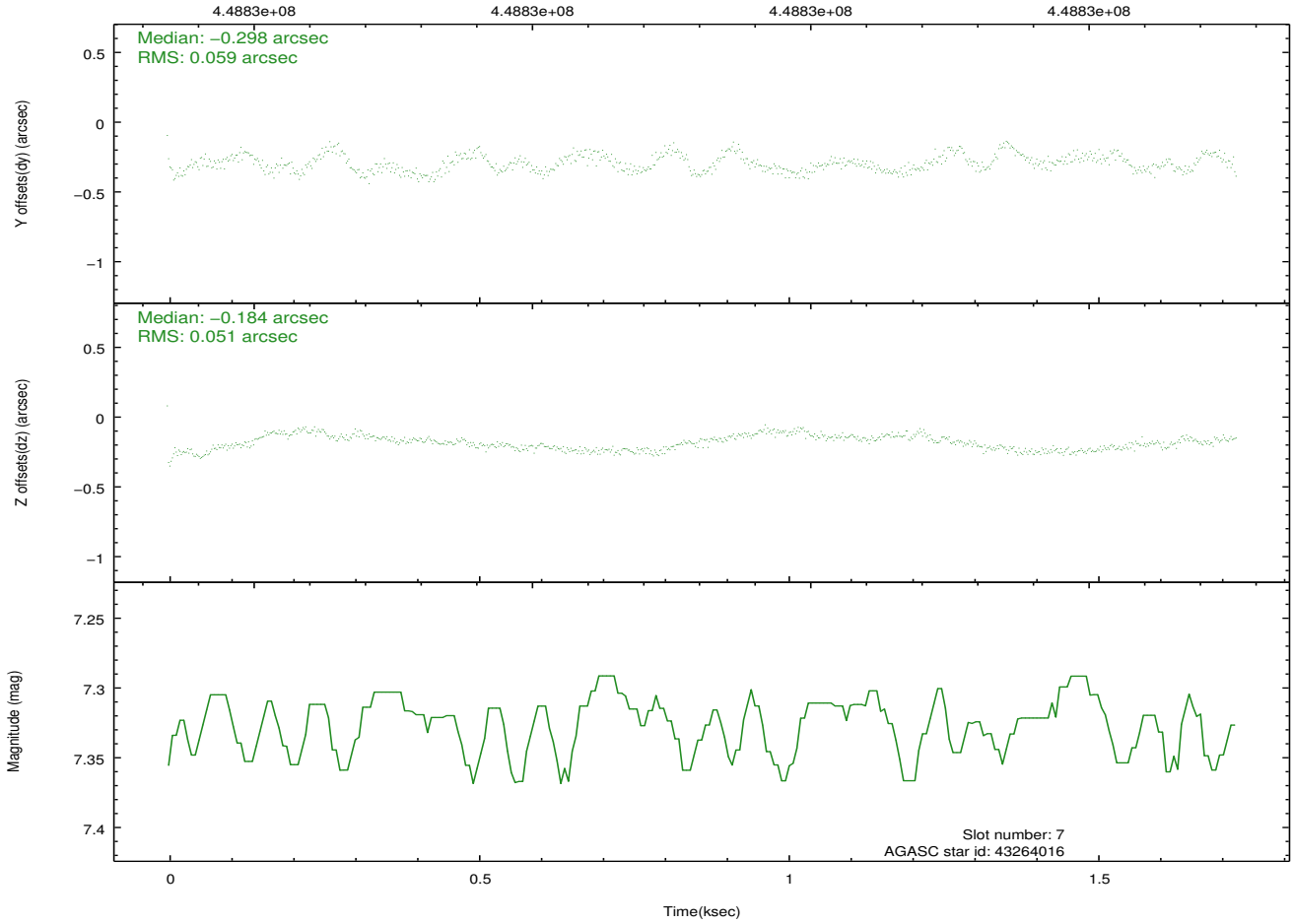
2.4.3 Slot 5



2.4.4 Slot 7

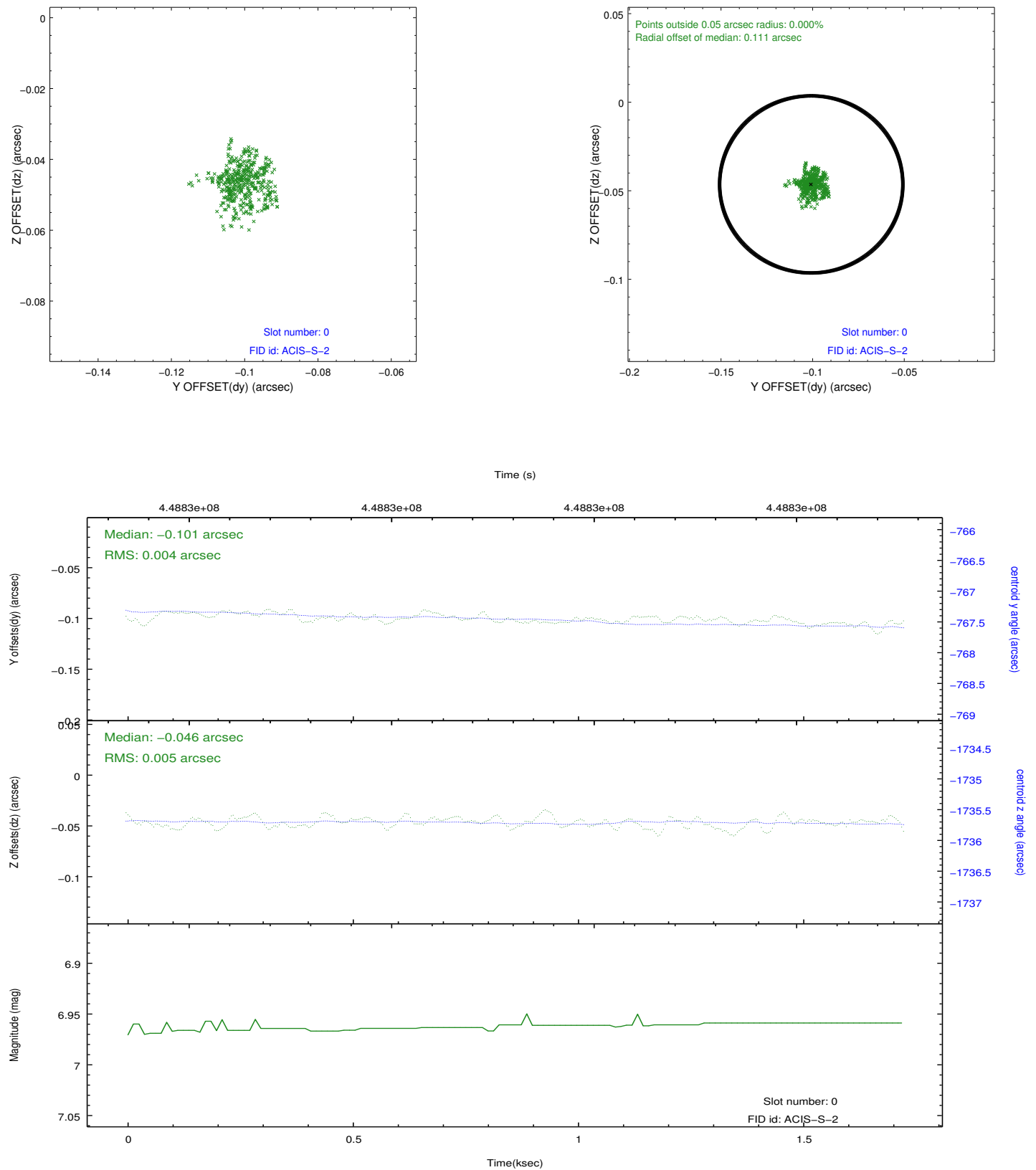


Time (s)

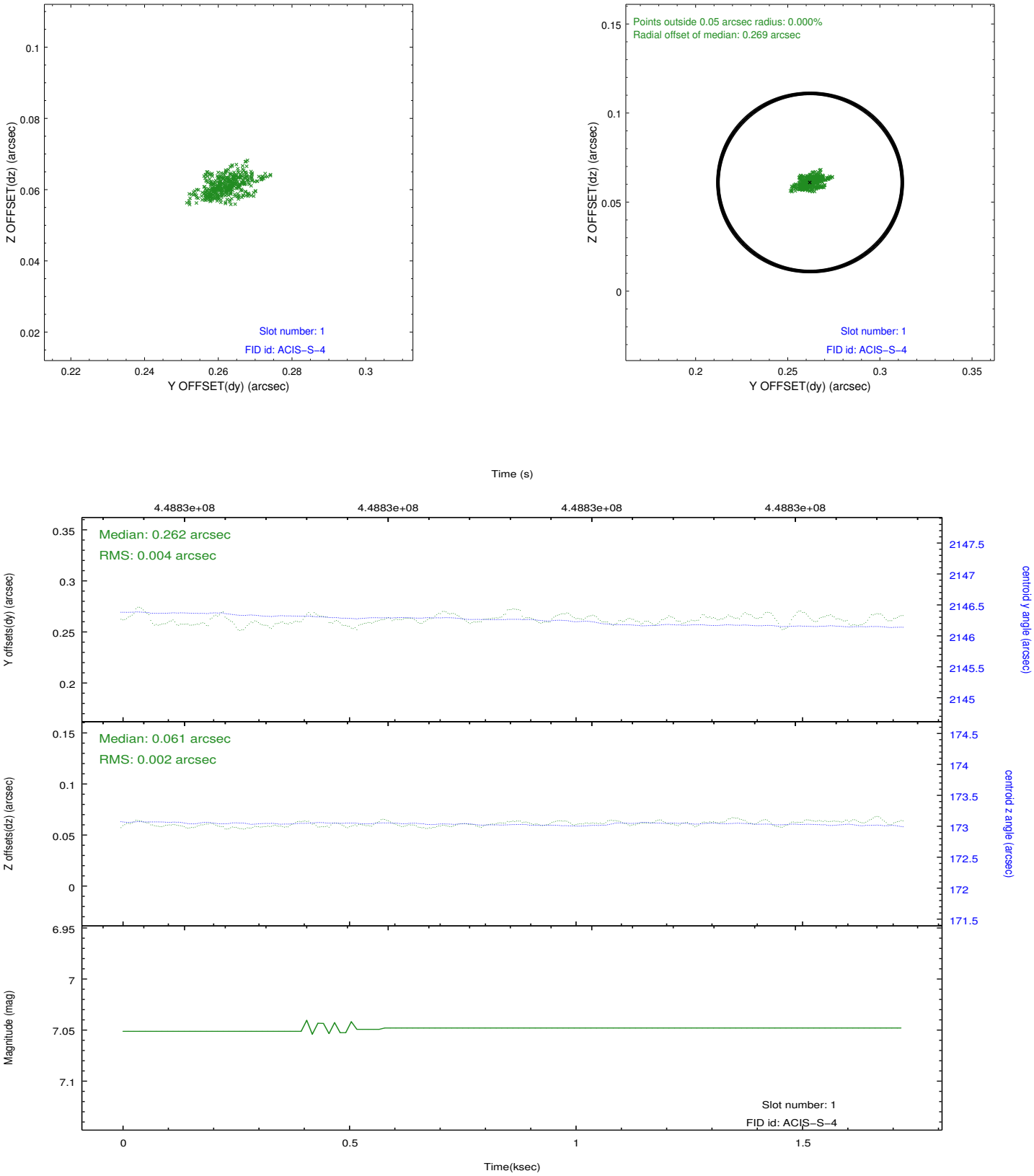


2.5 FID Slots

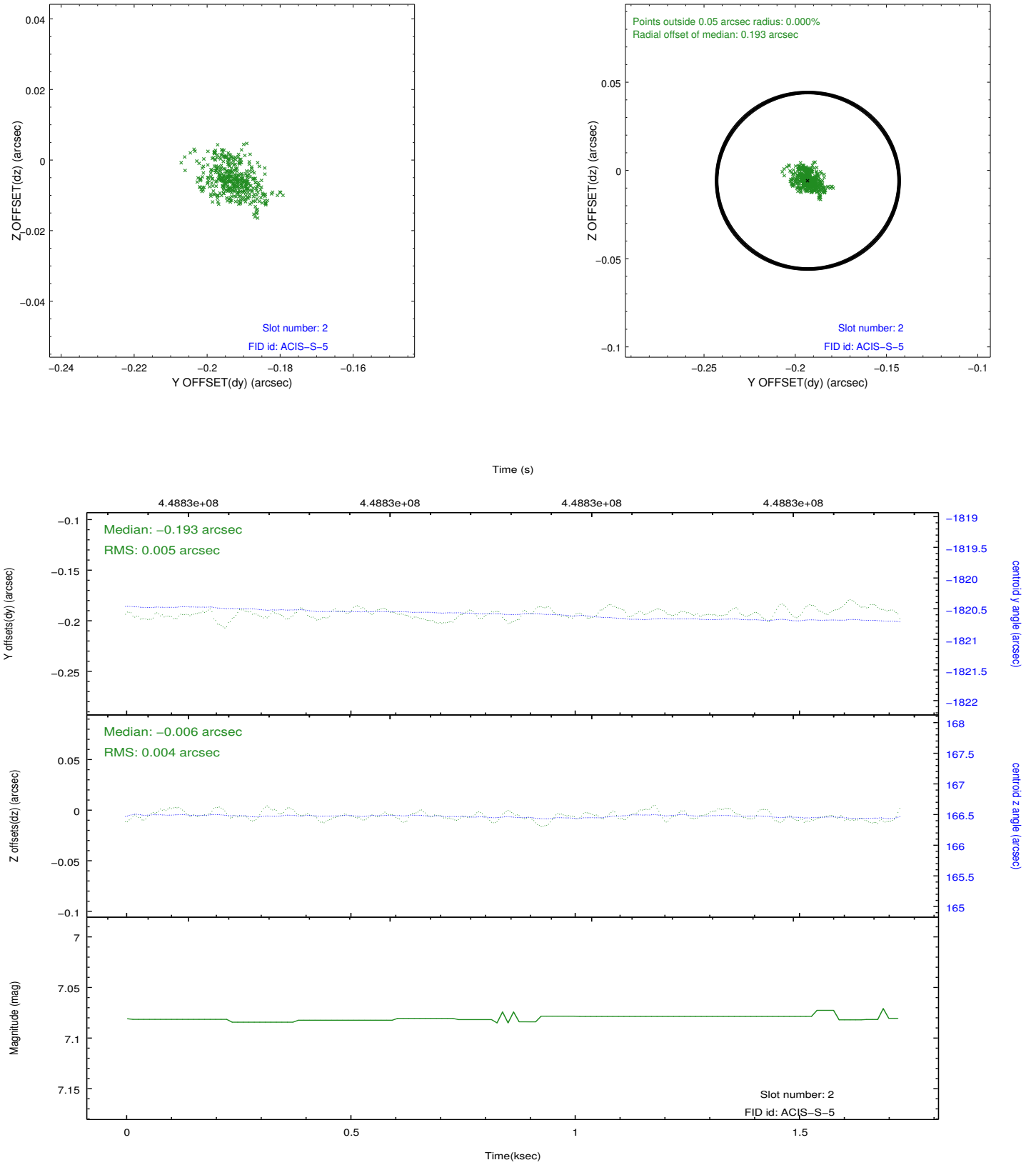
2.5.1 Slot 0



2.5.2 Slot 1



2.5.3 Slot 2



A Summary

A.1 Status

V&V Scientist	Jen Lauer
V&V Date (YYYY-MM-DD)	2012.03.23
V&V Edition	1
V&V Disposition and Status	OK
V&V Charge Time	1.5827812775373

A.2 Comments

The guide star in slot 6 was removed from the aspect solution due to poor data quality. The aspect solution is improved by the removal of this guide star from the solution.