

V&V Reference Report

L2 ASCDS Version : 8.4.3

Observation 13332 - L2 Version 2
Chandra X-Ray Center

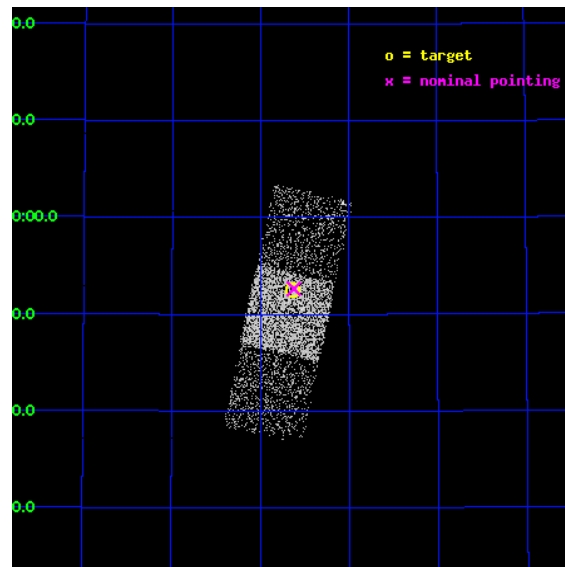
L2 Processing Date : Feb 27 2012

Contents

1	Front	2
2	OBI	3
2.1	OBI	3
2.1.1	Images	3
2.1.2	Bias	3
2.1.3	Parameters	4
2.1.4	Events	4
2.2	Compared Parameters	5
2.3	Aspect	6
2.4	Star Slots	9
2.4.1	Slot 3	9
2.4.2	Slot 4	10
2.4.3	Slot 5	11
2.4.4	Slot 6	12
2.4.5	Slot 7	13
2.5	FID Slots	14
2.5.1	Slot 0	14
2.5.2	Slot 1	15
2.5.3	Slot 2	16
A	Summary	17
A.1	Status	17
A.2	Comments	17

1 Front

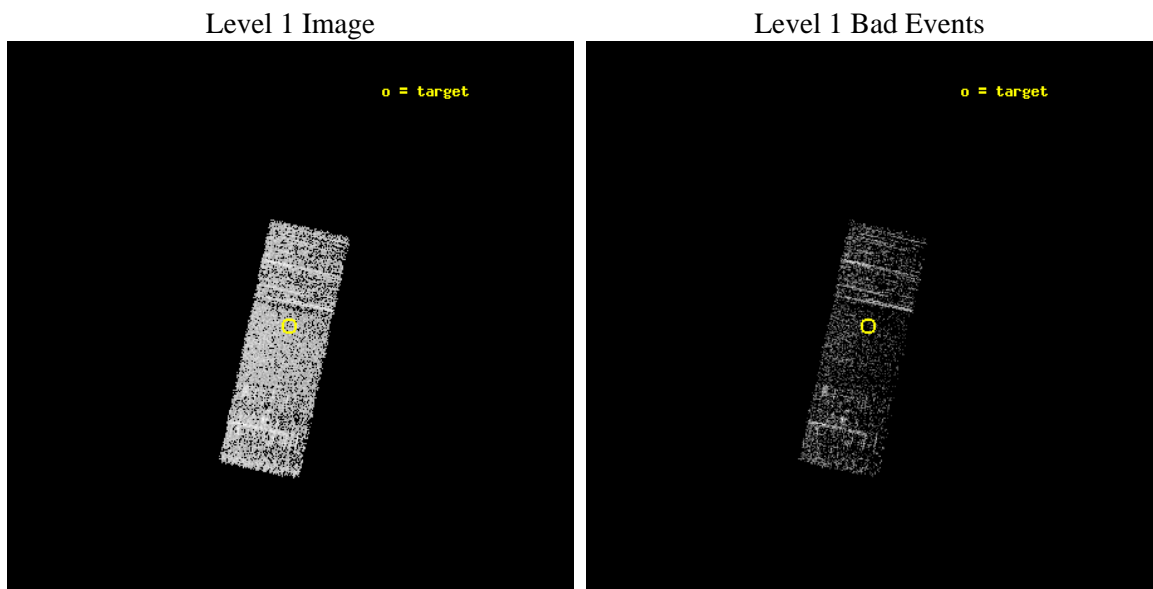
seq_num	702539	Sequence number
obs_id	13332	Observation id
title	A Large, Economical Snapshot Survey of the Most-Luminous Quasars from the Sloan Digital Sky Survey	Proposal title
observer	Prof. Gordon Garmire	Principal investigator
object	SDSS J0826+5152	Source name
dtcycle	0	
cycle	P	events from which exps? Prim/Second/Both
ra_targ	126.660833	Observer's specified target RA [deg]
dec_targ	51.875889	Observer's specified target Dec [deg]
ra_nom	126.65584958563	Nominal RA [deg]
dec_nom	51.877330023478	Nominal Dec [deg]
roll_nom	102.11887987318	Nominal Roll [deg]
revision	2	Processing version of data
ontime	1559.3000119925	Sum of GTIs [s]
livetime	1538.9266093958	Livetime [s]
ontime6	1559.3000119925	Sum of GTIs [s]
ontime7	1559.3000119925	Sum of GTIs [s]
ontime8	1559.3000119925	Sum of GTIs [s]
l2events	6523	Number of level 2 events



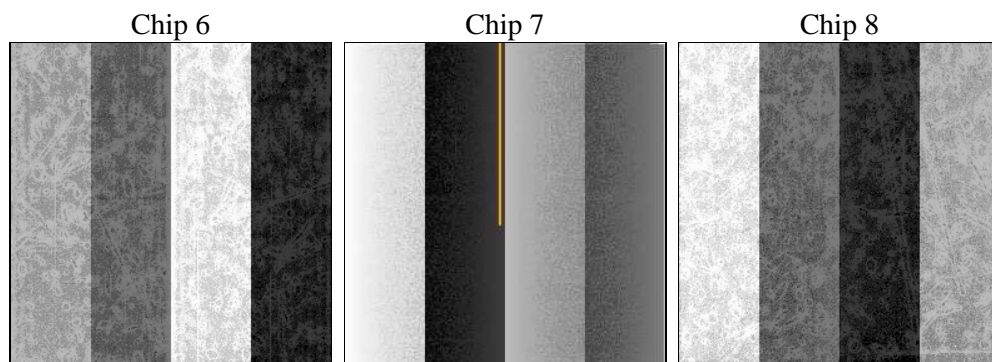
2 OBI

2.1 OBI

2.1.1 Images



2.1.2 Bias



2.1.3 Parameters

obi_num	2	Obi number	sched_exp_time	1500.844000	[s] Scheduled observation exposure time
ascdsver	8.4.3	Processing system revision	ontime	1559.3000119925	Sum of GTIs [s]
caldbver	4.4.8	 	ontime6	1559.3000119925	Sum of GTIs [s]
date	2012-02-28T00:09:58	Date and time of file creation	ontime7	1559.3000119925	Sum of GTIs [s]
revision	2	Processing version of data	ontime8	1559.3000119925	Sum of GTIs [s]
			l1events	30341	Number of level 1 events

2.1.4 Events

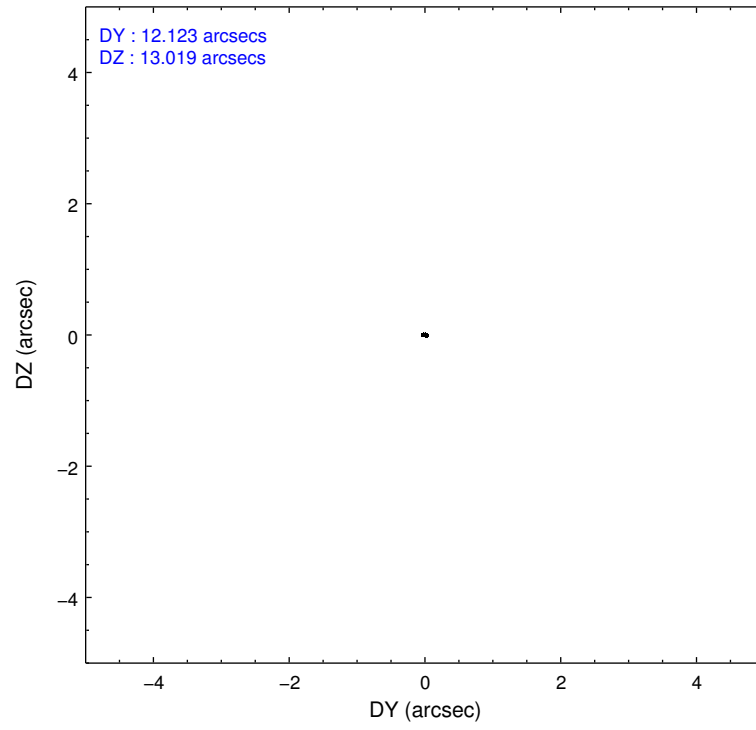
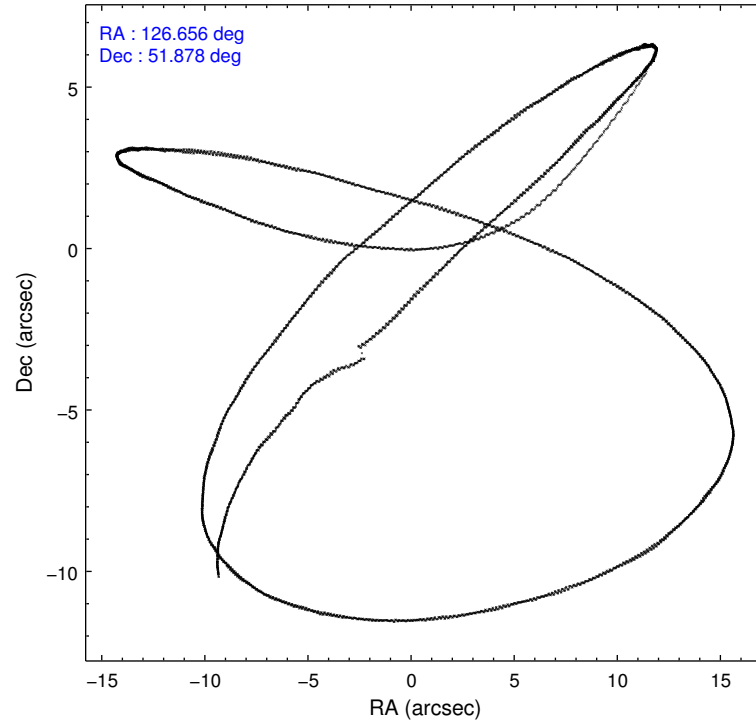
	ccd 6	ccd 7	ccd 8
level 1 events	9640	9756	10945
rejected events	8526	5066	8071
rejected %	88%	51%	73%

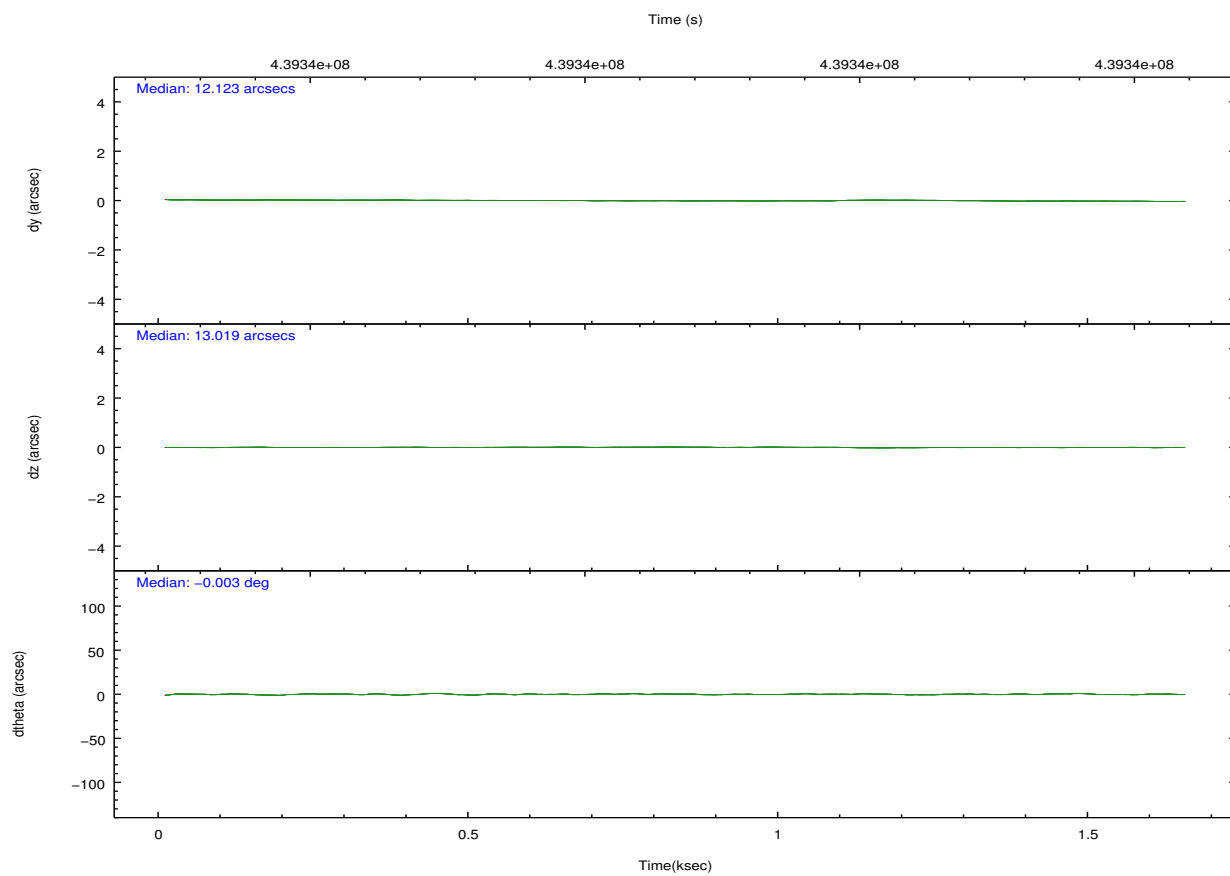
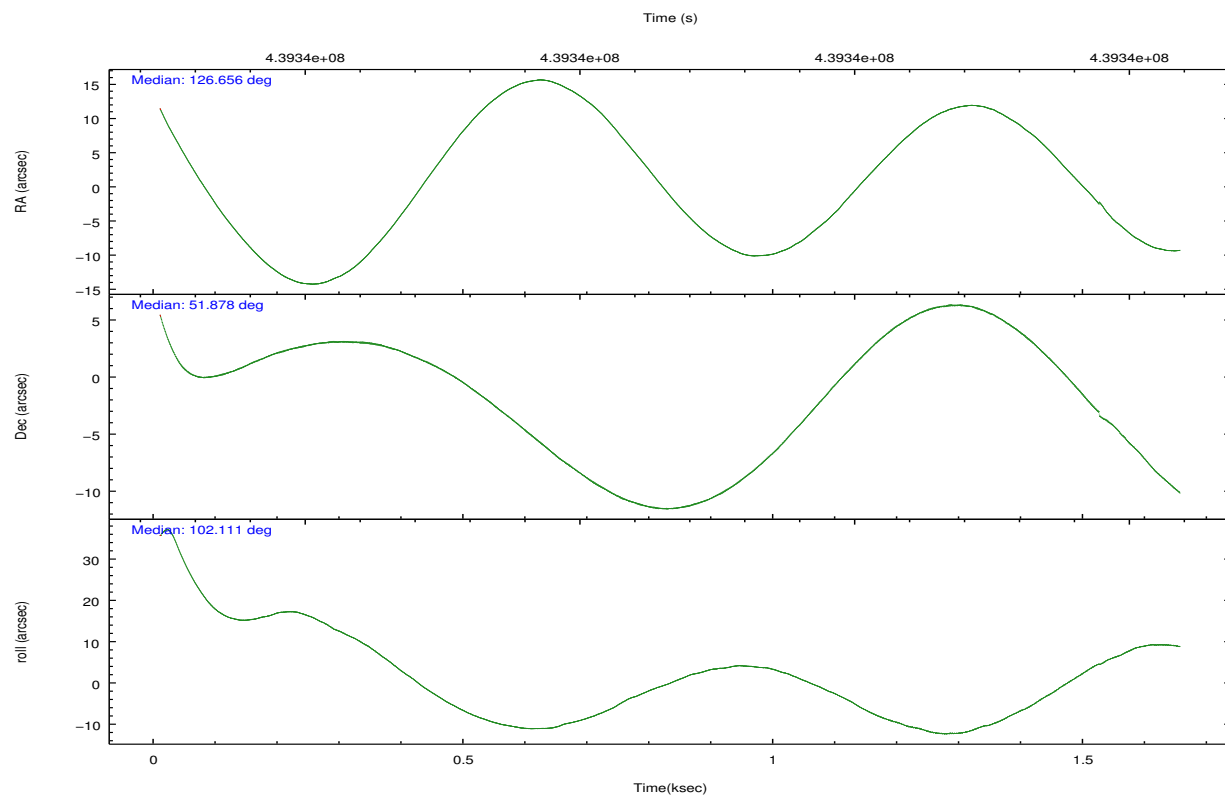
	ccd 6	ccd 7	ccd 8
grade 0 events	406	452	850
	4%	4%	7%
grade 1 events	5	12	5
	0%	0%	0%
grade 2 events	253	947	693
	2%	9%	6%
grade 3 events	91	415	342
	0%	4%	3%
grade 4 events	103	426	301
	1%	4%	2%
grade 5 events	385	1086	570
	3%	11%	5%
grade 6 events	264	2462	706
	2%	25%	6%
grade 7 events	8133	3956	7478
	84%	40%	68%

2.2 Compared Parameters

Parameter	Planned	Actual	Parameter	Planned	Actual
Instrument	ACIS	ACIS	Obspar format version number	7	7
Detector	ACIS-678	ACIS-678	Obspar file type	PREDICTED	ACTUAL
Grating	NONE	NONE	Obspar update status	NONE	UPDATED
Data mode	VFAINT	VFAINT	Number of optional ACIS chips dropped	0	0
Observation mode	POINTING	POINTING	On-chip summing requested	N	N
[deg] Pointing RA	126.686381	126.6558495856257	Subarray requested	NONE	NONE
[deg] Pointing Dec	51.856912	51.87733002347751	Alternating exposures requested	N	N
[deg] Pointing Roll	101.937930	102.1188798731817	[s] Primary exposure time	0.000000	3.1
[mm] SIM focus pos	-0.684267	-0.6828225247311905			
[mm] SIM defocus	0	0.001444936568705701			
[mm] SIM translation stage pos	-190.132523	-190.1425803651734			
[mm] SIM translation stage offset	0	0.01005778216563158			
[s] Observation start time (MET)	439340989.184000	439339937.19292			
Observation start date	2011-12-03T23:08:43	2011-12-03T22:52:17			
[s] Observation end time (MET)	439342490.184000	439342715.96806			
Observation end date	2011-12-03T23:33:44	2011-12-03T23:38:35			
Read mode	TIMED	TIMED			

2.3 Aspect



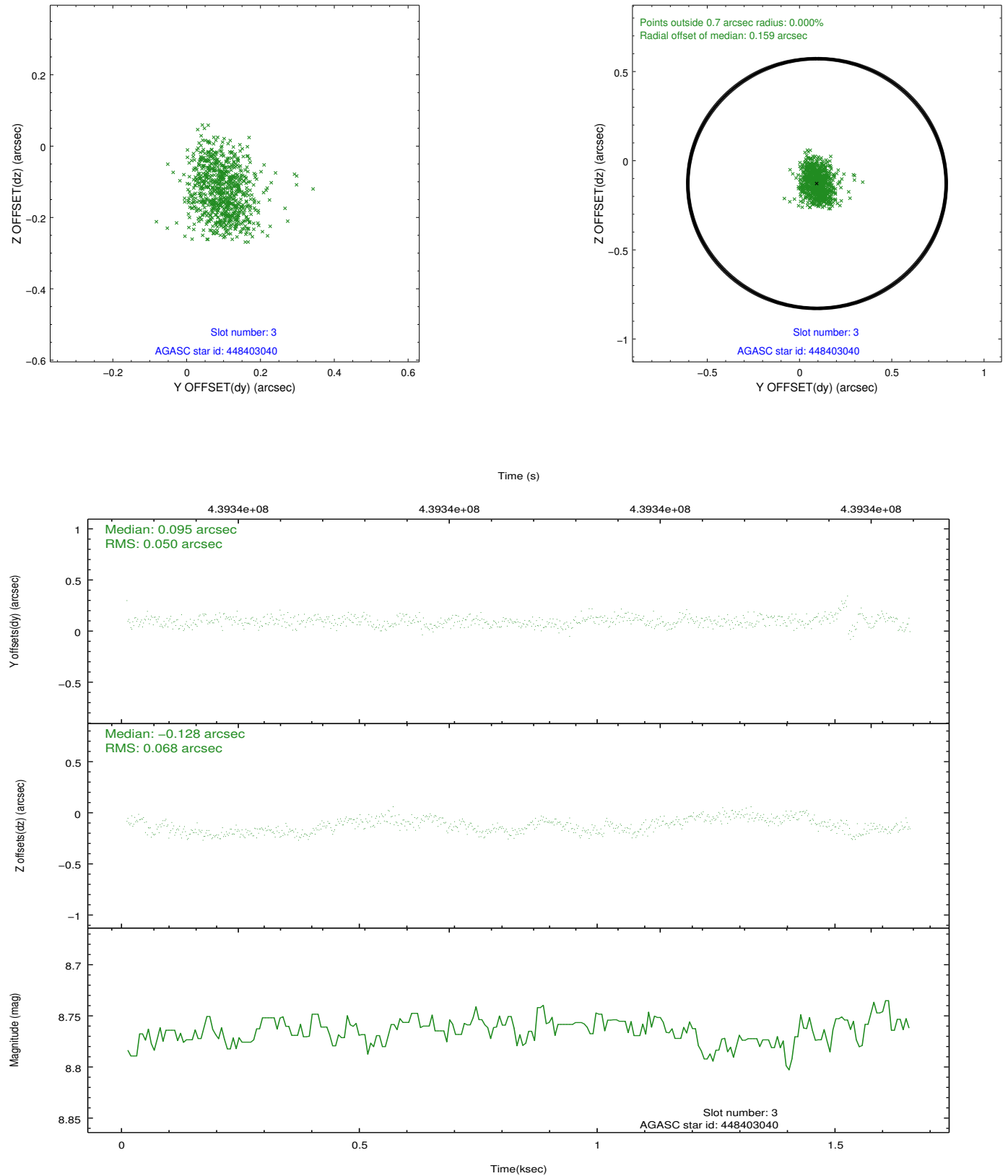


Slot Statistics

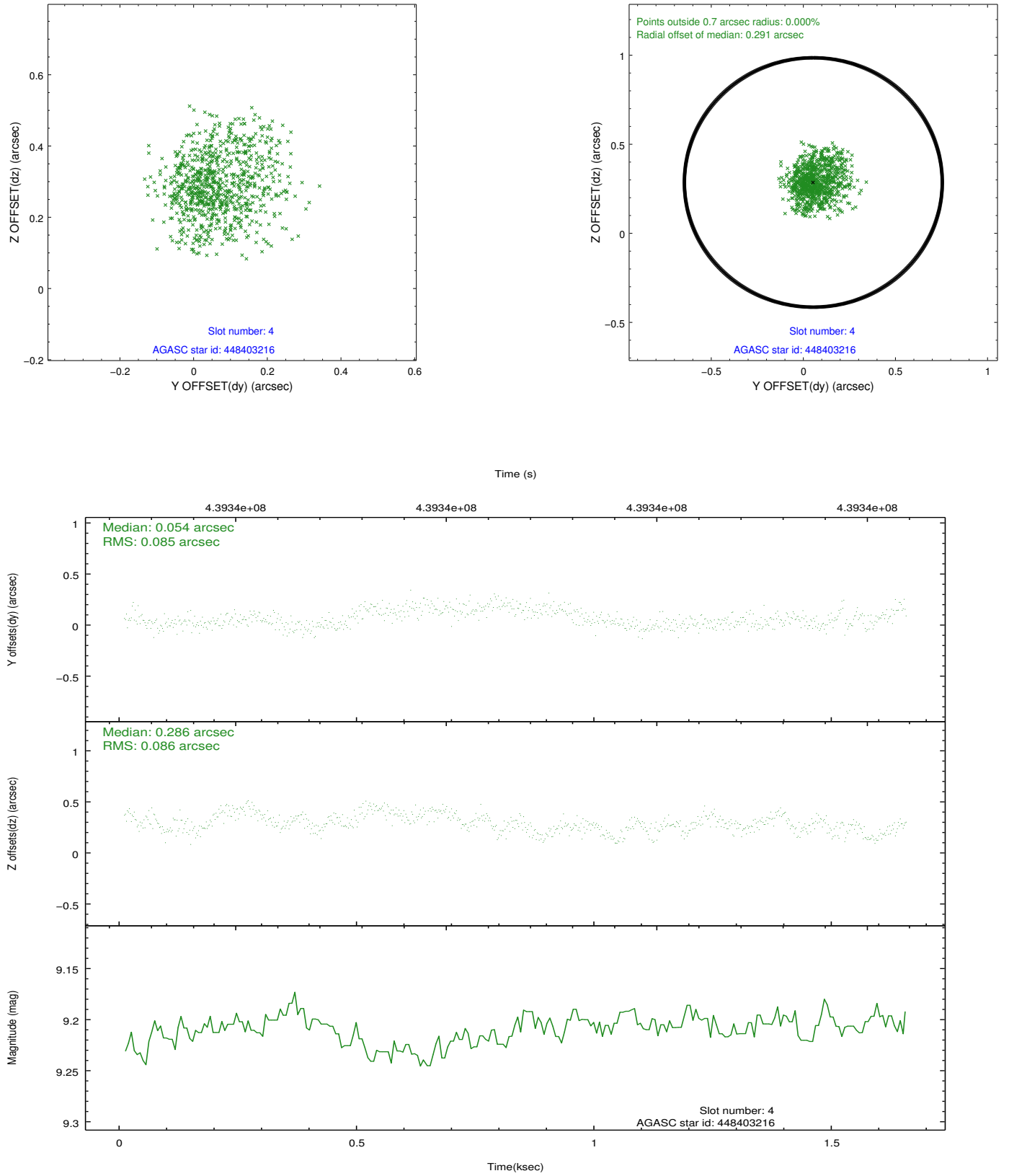
slot	status	id	mag	n_pts	med_dy	med_dz	dr1	dr2	ra	dec	mean_y	mean_z
0	FID	ACIS-S-2	7.03	402	-0.044	-0.076	0.008	0.013	0.000000	0.000000	-765.07	-1734.36
1	FID	ACIS-S-4	7.12	402	0.221	0.042	0.008	0.015	0.000000	0.000000	2146.65	170.06
2	FID	ACIS-S-5	7.17	402	-0.208	0.043	0.009	0.014	0.000000	0.000000	-1812.92	168.33
3	GUIDE	448403040	8.76	804	0.095	-0.128	0.089	0.141	125.954630	51.543640	-757.98	1833.69
4	GUIDE	448403216	9.21	803	0.054	0.286	0.132	0.207	127.425007	51.339293	-2160.66	-1239.54
5	GUIDE	448406624	8.60	804	-0.039	-0.196	0.106	0.166	125.892337	51.235608	-1813.03	2209.52
6	GUIDE	448408680	6.58	804	-0.353	-0.209	0.083	0.119	126.405805	52.282216	1622.73	290.24
7	GUIDE	448528736	9.80	799	0.256	0.241	0.277	0.403	127.733191	51.864731	-436.48	-2285.58

2.4 Star Slots

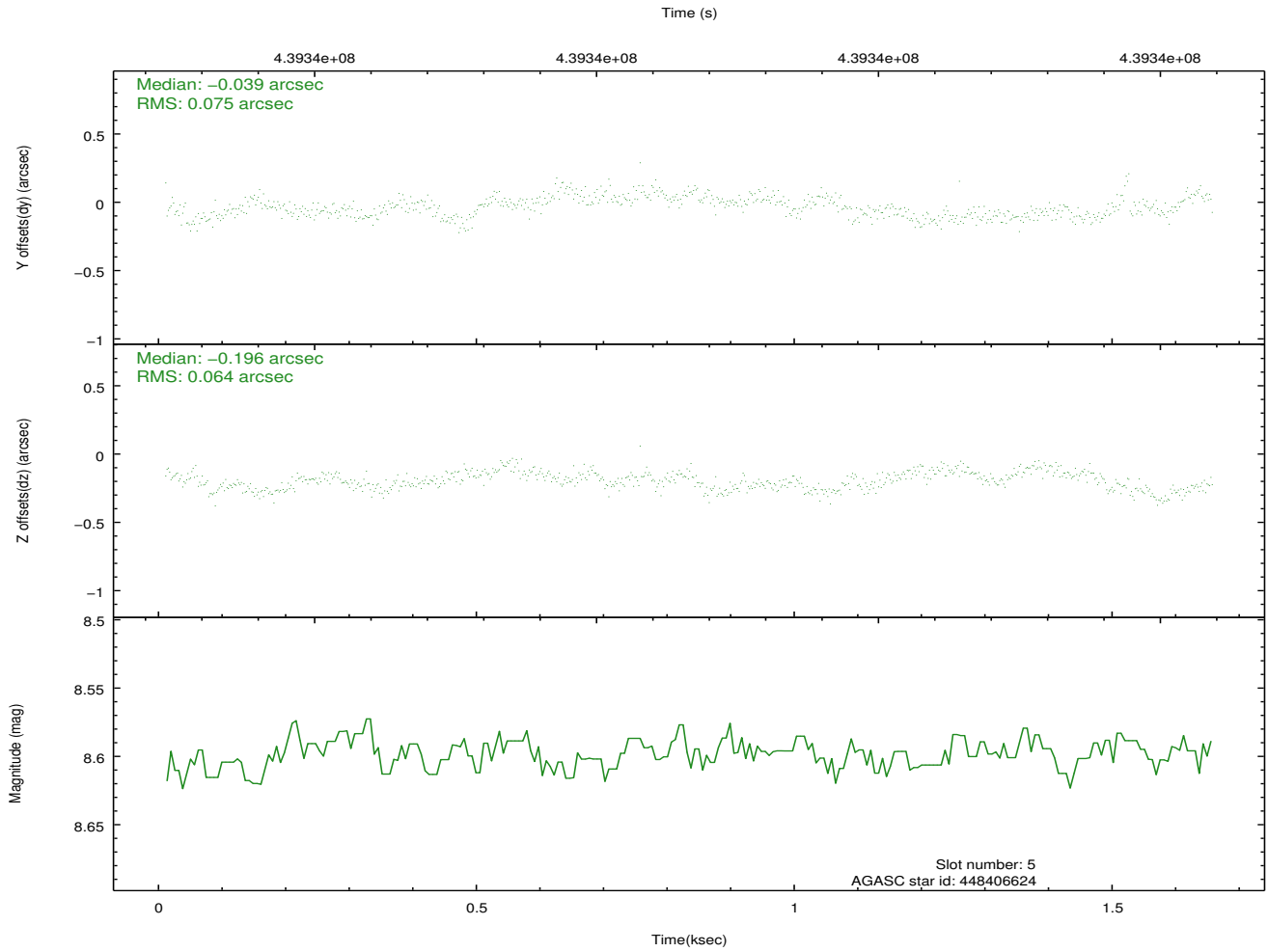
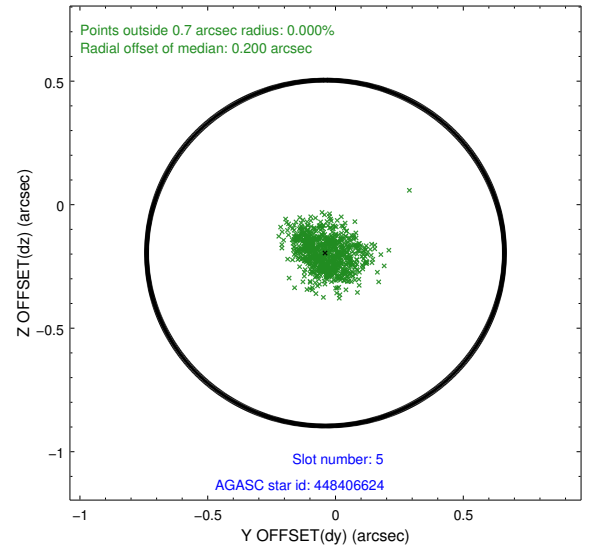
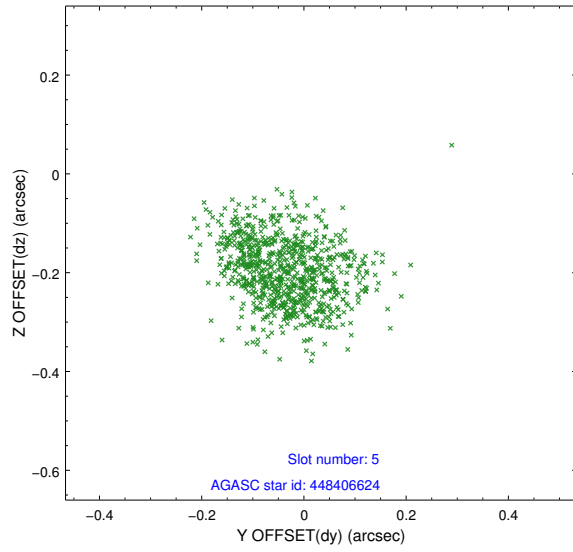
2.4.1 Slot 3



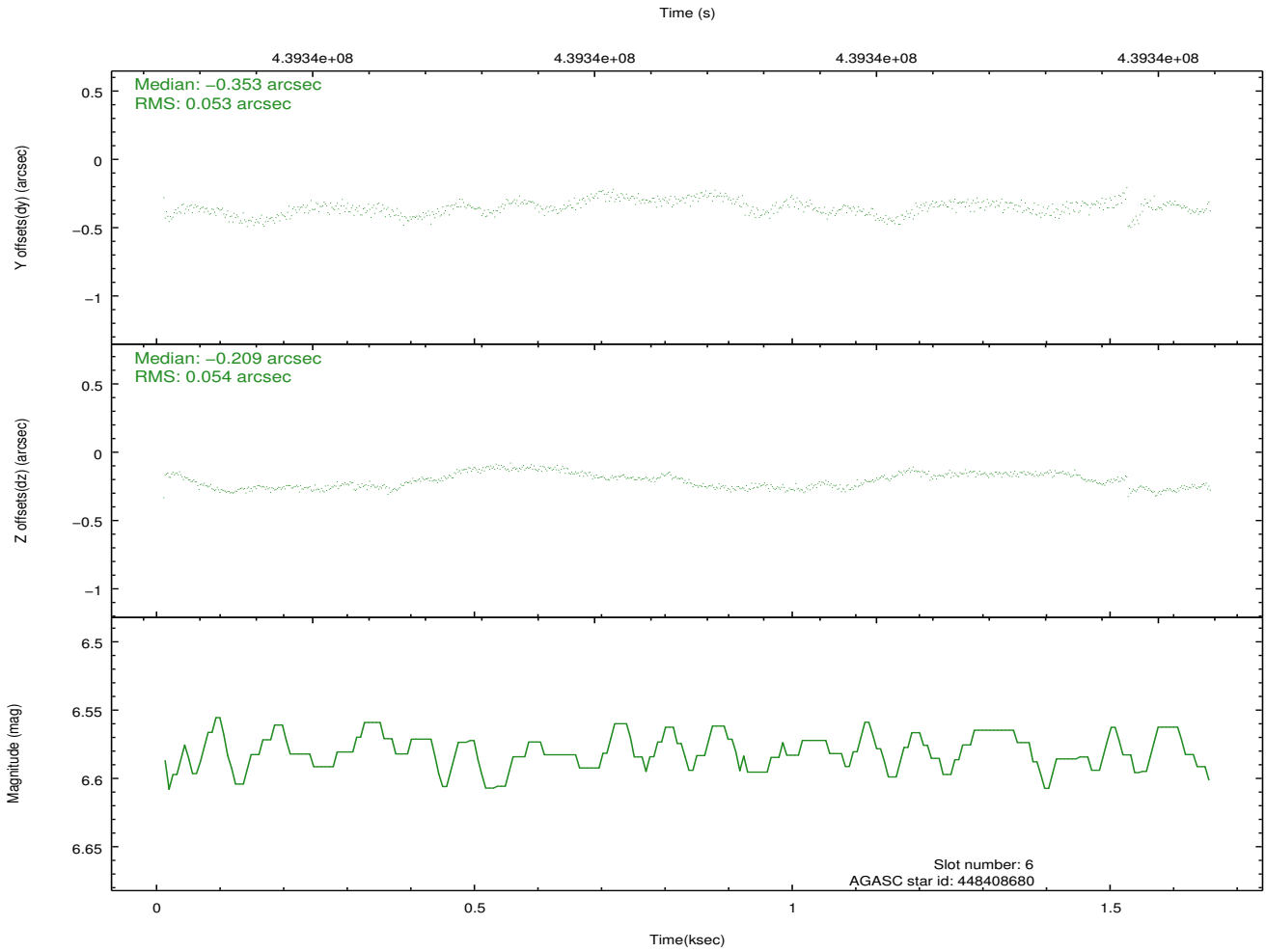
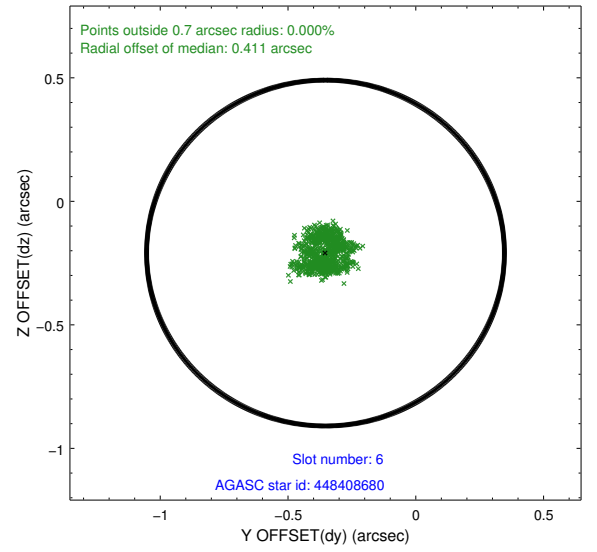
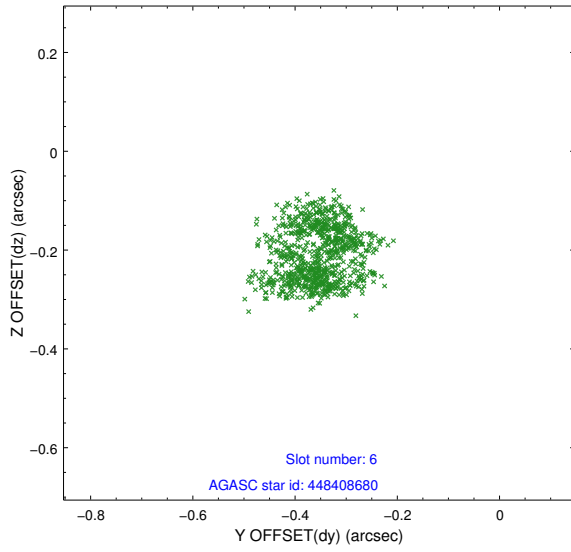
2.4.2 Slot 4



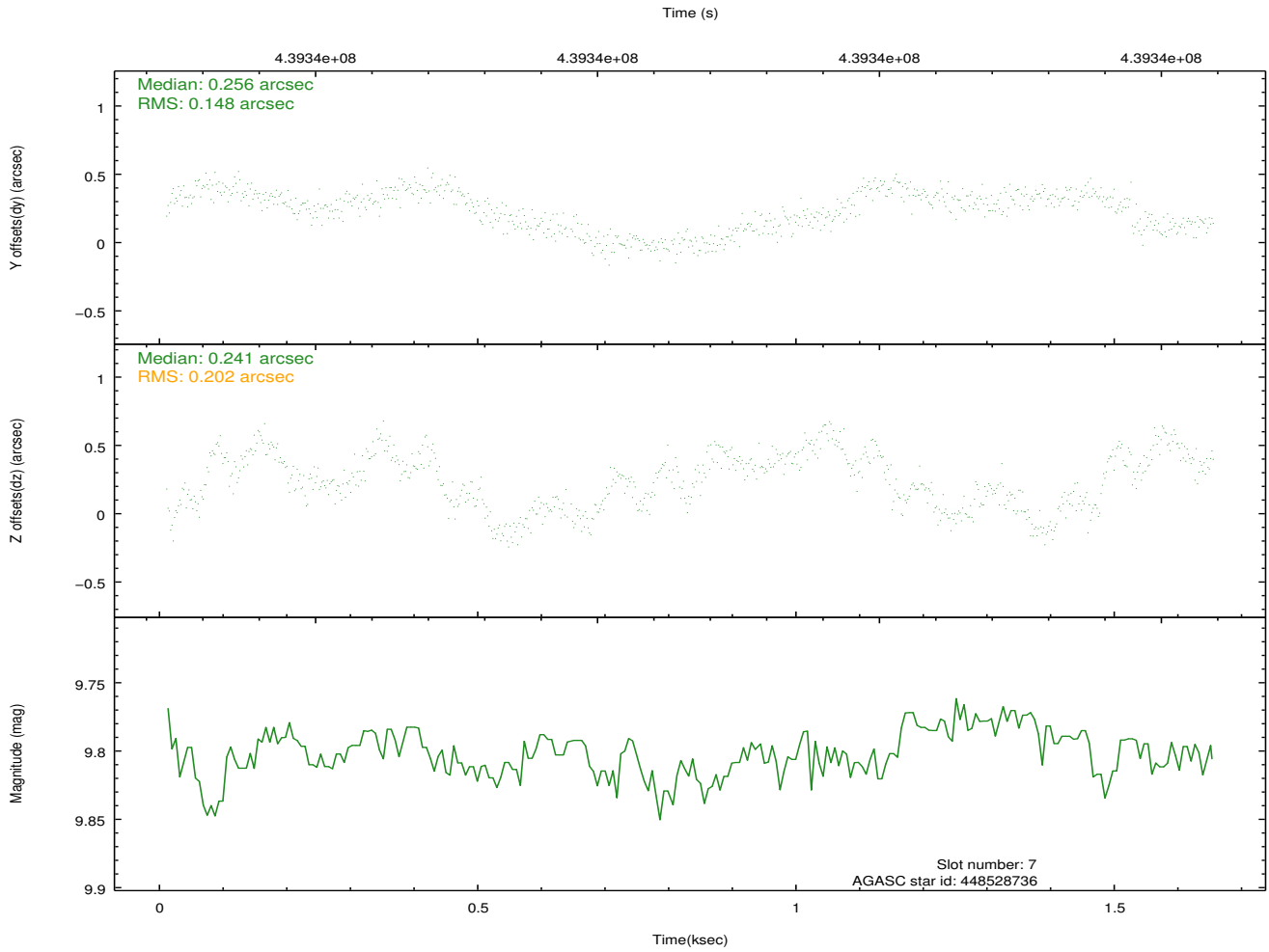
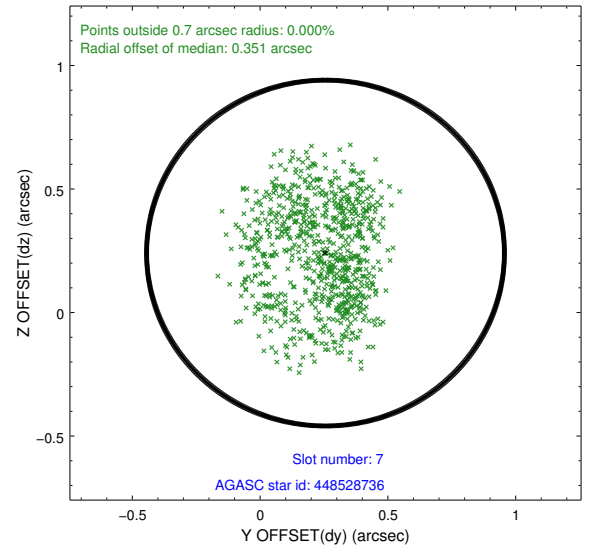
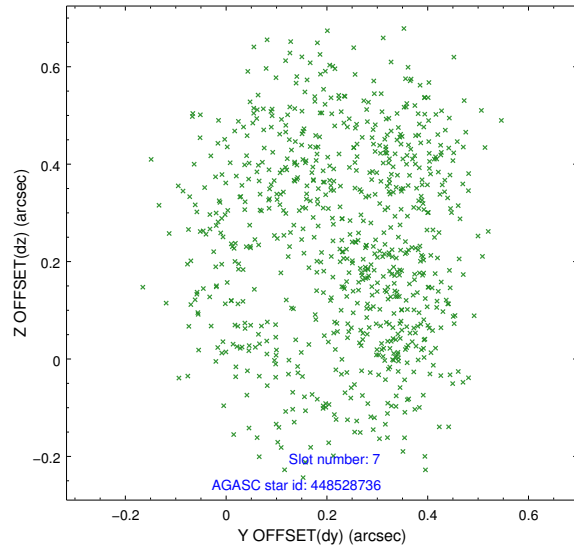
2.4.3 Slot 5



2.4.4 Slot 6

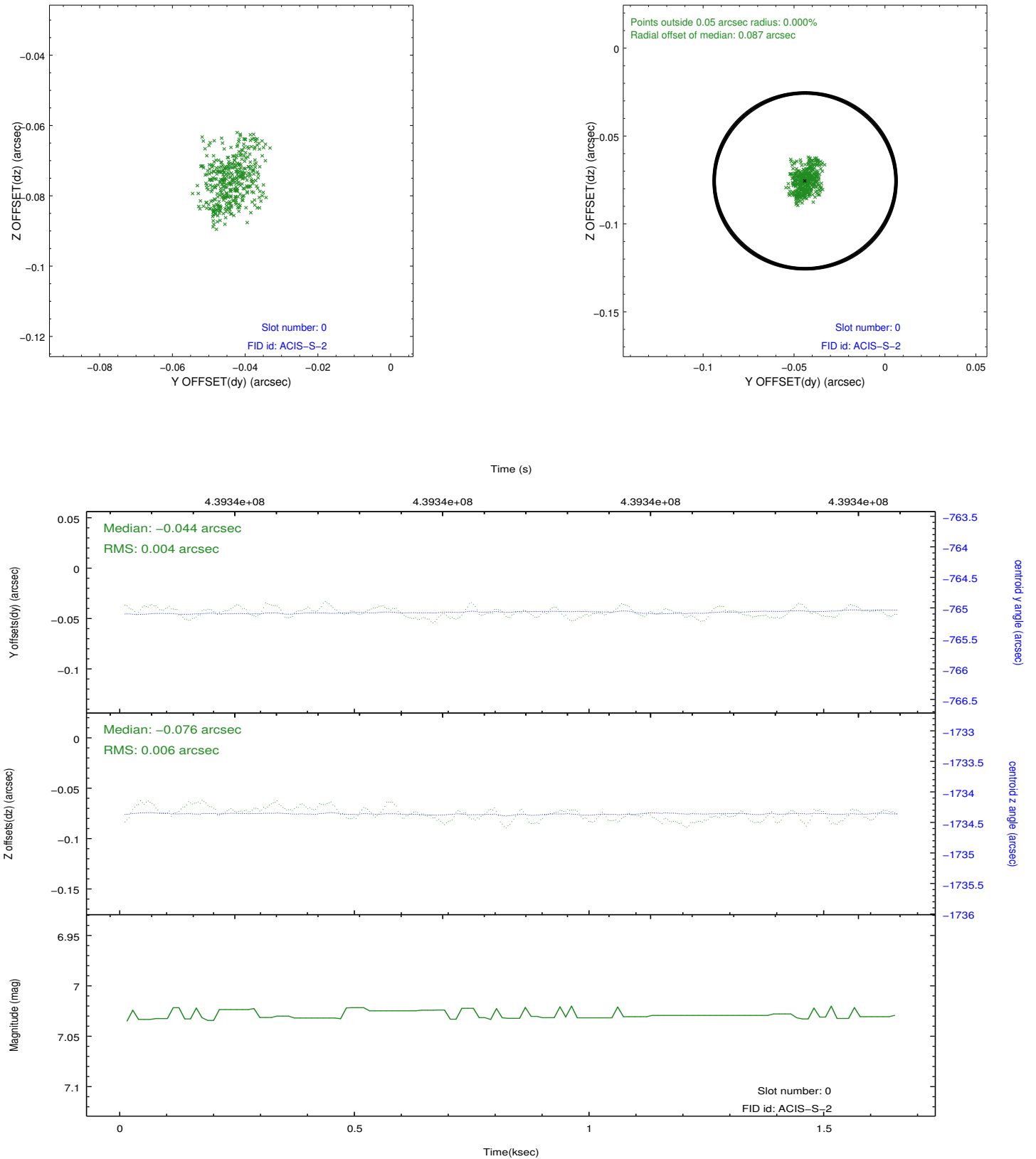


2.4.5 Slot 7

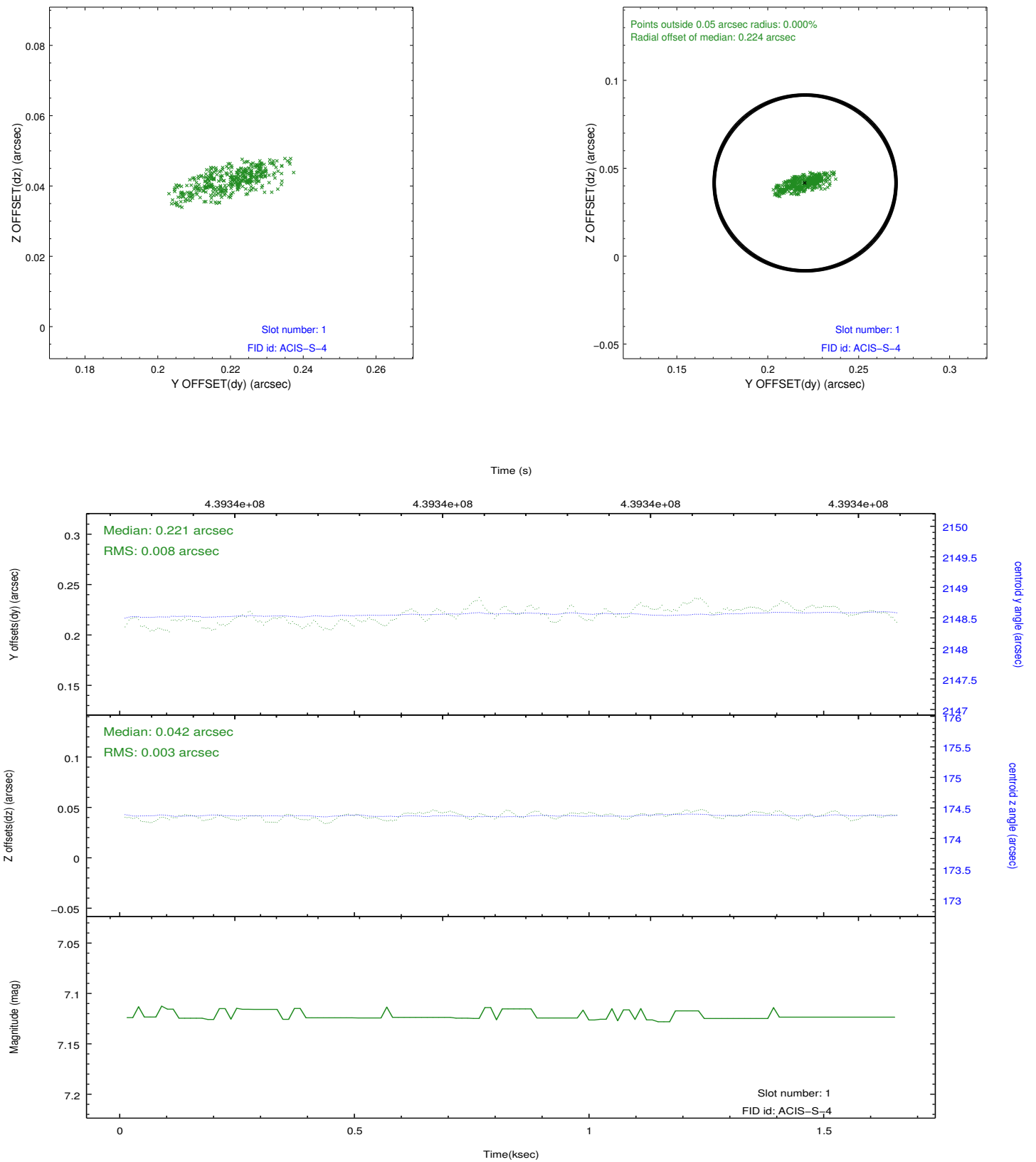


2.5 FID Slots

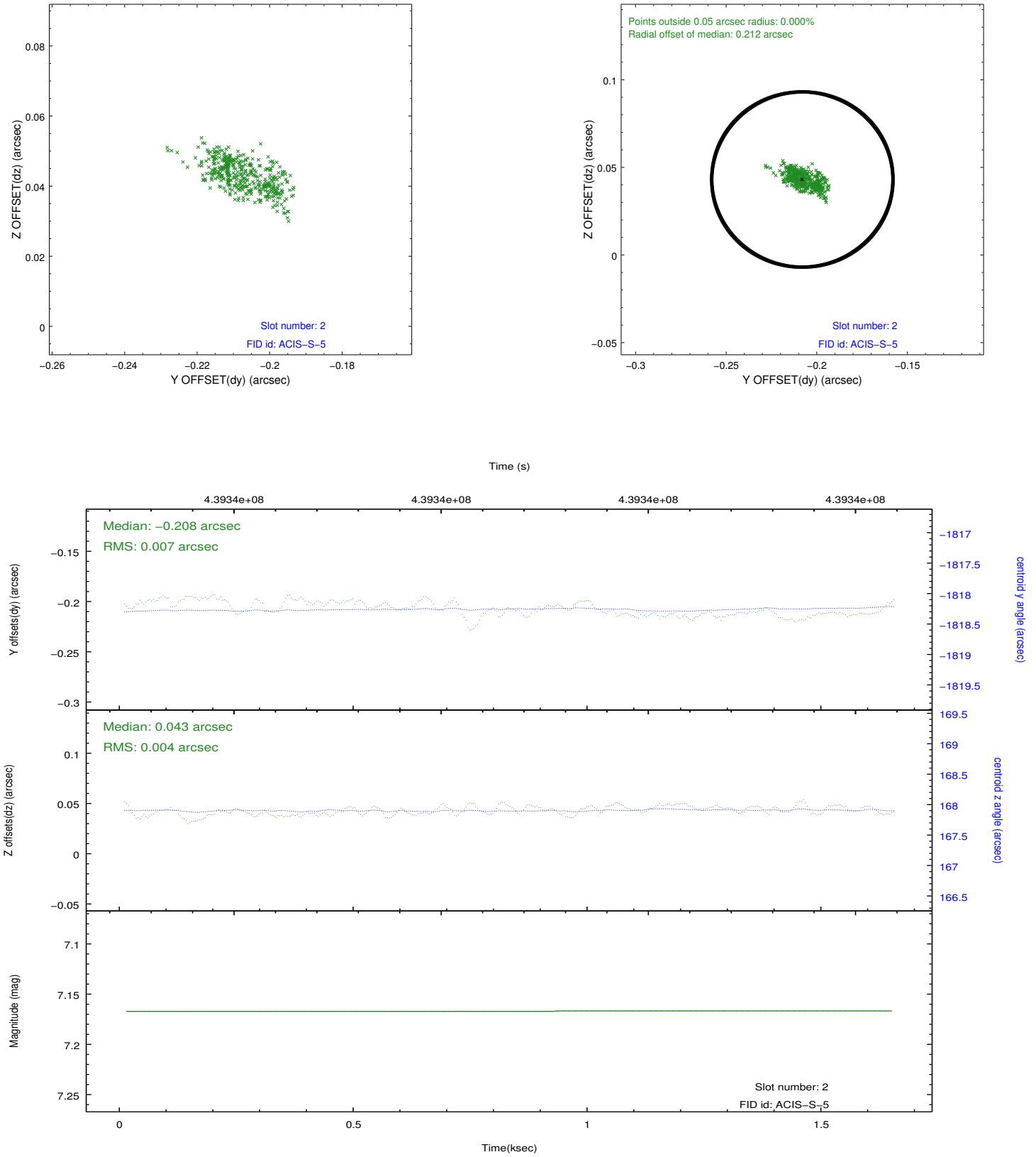
2.5.1 Slot 0



2.5.2 Slot 1



2.5.3 Slot 2



A Summary

A.1 Status

V&V Scientist	Jen Lauer
V&V Date (YYYY-MM-DD)	2012.02.29
V&V Edition	1
V&V Disposition and Status	OK
V&V Charge Time	1.5593000119925

A.2 Comments