

# V&V Reference Report

## L2 ASCDS Version : 8.4.3

Observation 13309 - L2 Version 1  
Chandra X-Ray Center

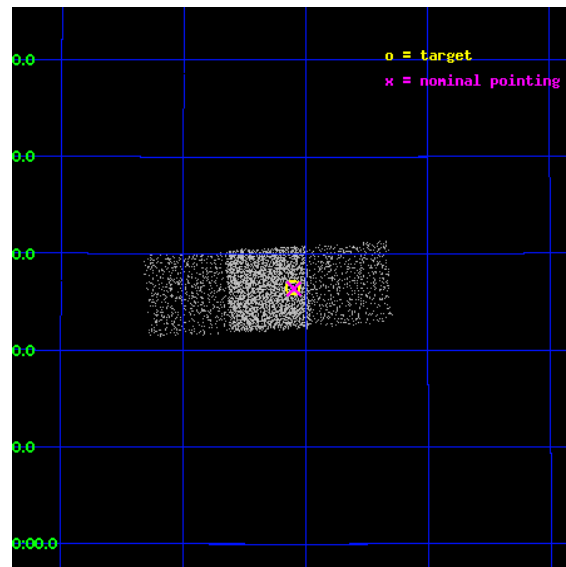
L2 Processing Date : Mar 18 2012

## Contents

<b>1</b>	<b>Front</b>	<b>2</b>
<b>2</b>	<b>OBI</b>	<b>3</b>
2.1	OBI . . . . .	3
2.1.1	Images . . . . .	3
2.1.2	Bias . . . . .	3
2.1.3	Parameters . . . . .	4
2.1.4	Events . . . . .	4
2.2	Compared Parameters . . . . .	5
2.3	Aspect . . . . .	6
2.4	Star Slots . . . . .	9
2.4.1	Slot 3 . . . . .	9
2.4.2	Slot 4 . . . . .	10
2.4.3	Slot 5 . . . . .	11
2.4.4	Slot 6 . . . . .	12
2.4.5	Slot 7 . . . . .	13
2.5	FID Slots . . . . .	14
2.5.1	Slot 0 . . . . .	14
2.5.2	Slot 1 . . . . .	15
2.5.3	Slot 2 . . . . .	16
<b>A</b>	<b>Summary</b>	<b>17</b>
A.1	Status . . . . .	17
A.2	Comments . . . . .	17

# 1 Front

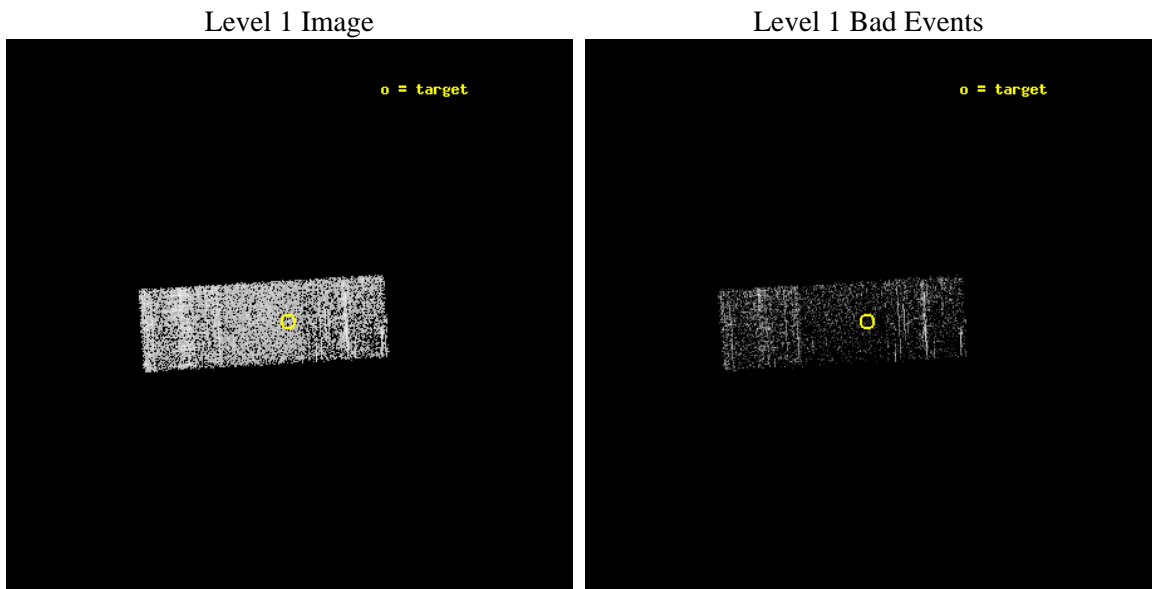
seq_num	702516	Sequence number
obs_id	13309	Observation id
title	A Large, Economical Snapshot Survey of the Most-Luminous Quasars from the Sloan Digital Sky Survey	Proposal title
observer	Prof. Gordon Garmire	Principal investigator
object	SDSS J1200+3126	Source name
dtcycle	0	&#160
cycle	P	events from which exps? Prim/Second/Both
ra_targ	180.025833	Observer's specified target RA [deg]
dec_targ	31.441889	Observer's specified target Dec [deg]
ra_nom	180.02388635112	Nominal RA [deg]
dec_nom	31.439504307142	Nominal Dec [deg]
roll_nom	176.46315993648	Nominal Roll [deg]
revision	1	Processing version of data
ontime	1487.2870664597	Sum of GTIs [s]
livetime	1467.8545660116	Livetime [s]
ontime6	1487.2460264564	Sum of GTIs [s]
ontime7	1487.2870664597	Sum of GTIs [s]
ontime8	1474.6409156322	Sum of GTIs [s]
l2events	5431	Number of level 2 events



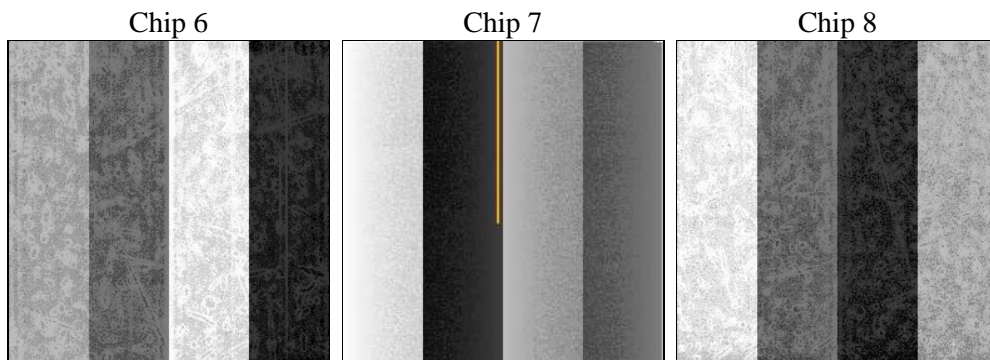
## 2 OBI

### 2.1 OBI

#### 2.1.1 Images



#### 2.1.2 Bias



### 2.1.3 Parameters

obi_num	1	Obi number	sched_exp_time	1680.000000	[s] Scheduled observation exposure time
ascdsver	8.4.3	Processing system revision	ontime	1487.2870664597	Sum of GTIs [s]
caldbver	4.4.8	&#160	ontime6	1487.2460264564	Sum of GTIs [s]
date	2012-03-19T01:46:24	Date and time of file creation	ontime7	1487.2870664597	Sum of GTIs [s]
revision	1	Processing version of data	ontime8	1474.6409156322	Sum of GTIs [s]
			l1events	26856	Number of level 1 events

### 2.1.4 Events

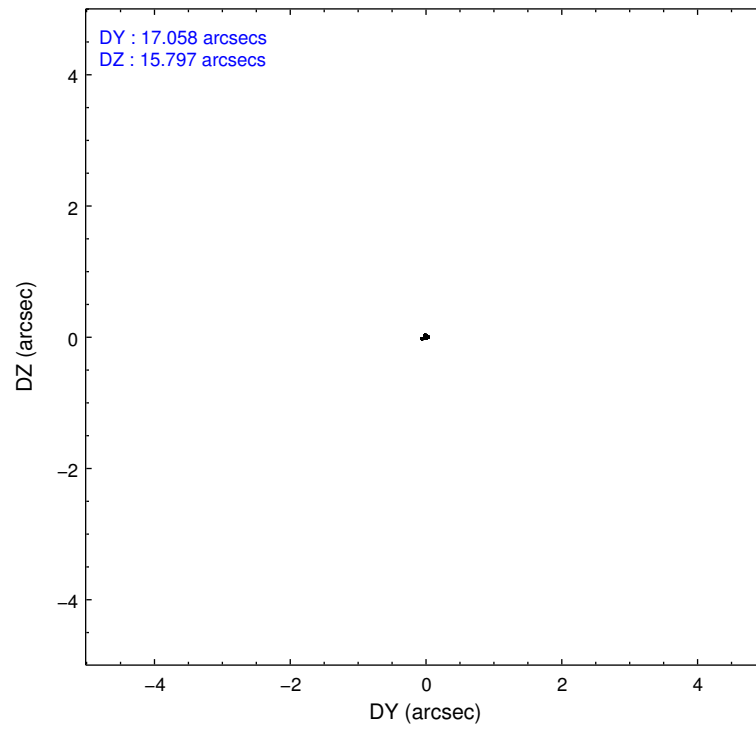
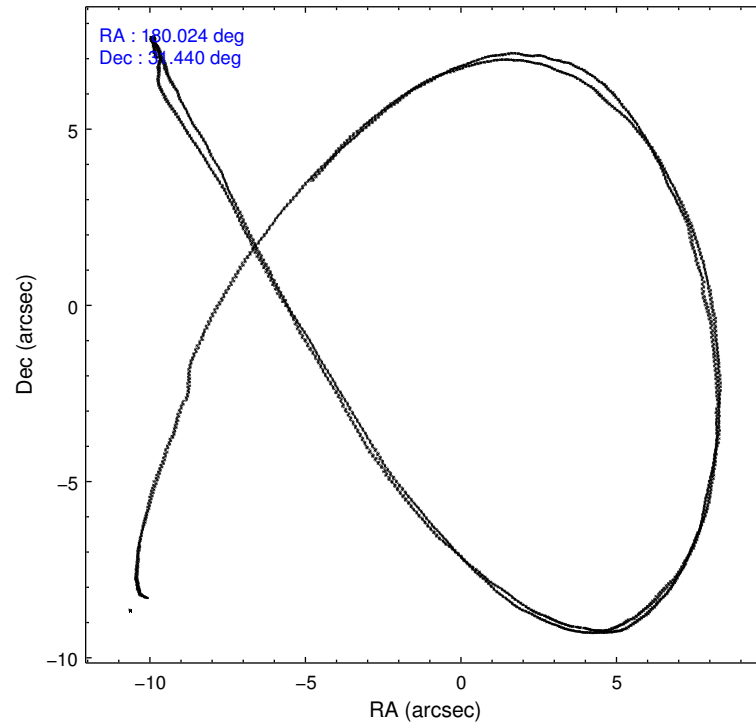
	<b>ccd 6</b>	<b>ccd 7</b>	<b>ccd 8</b>
level 1 events	7402	8323	11131
rejected events	6547	4265	8656
rejected %	<b>88%</b>	<b>51%</b>	<b>77%</b>

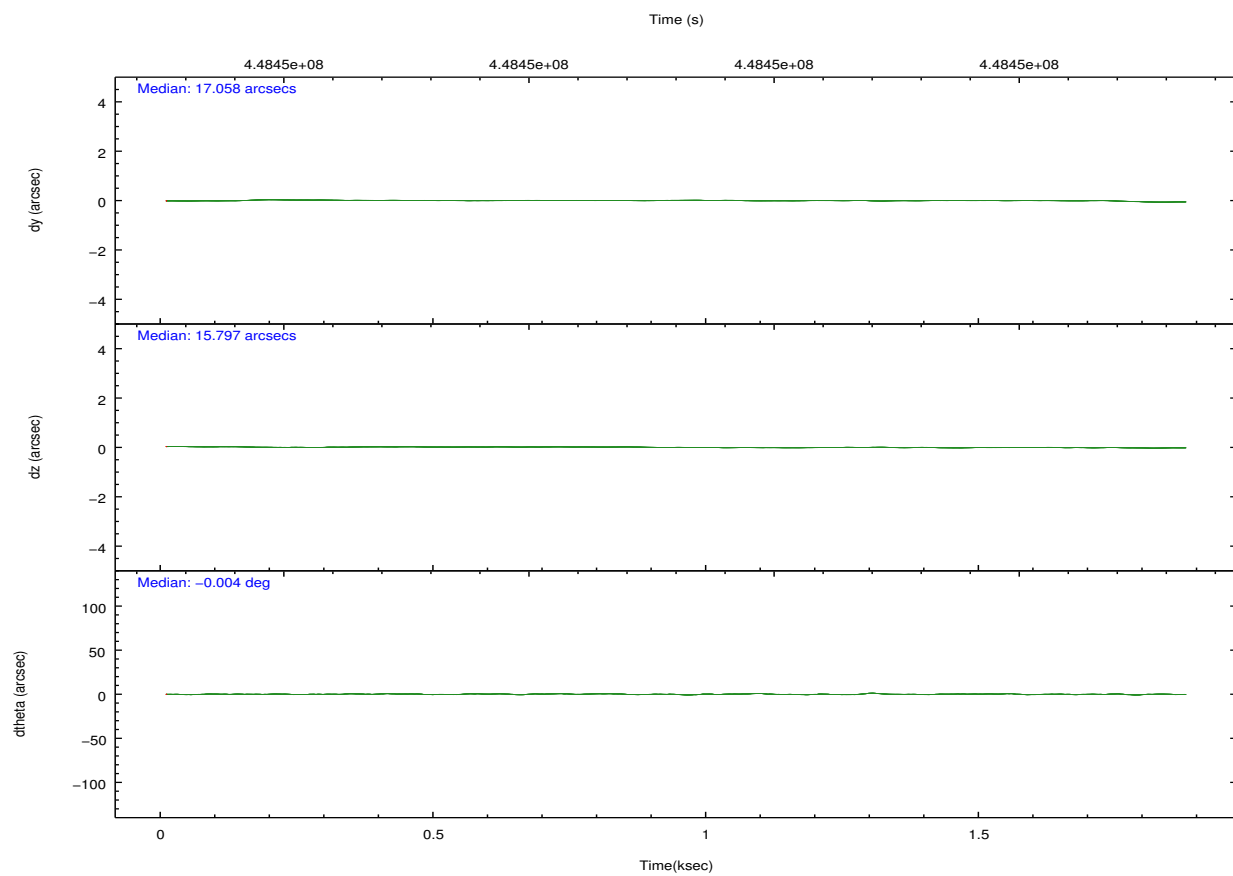
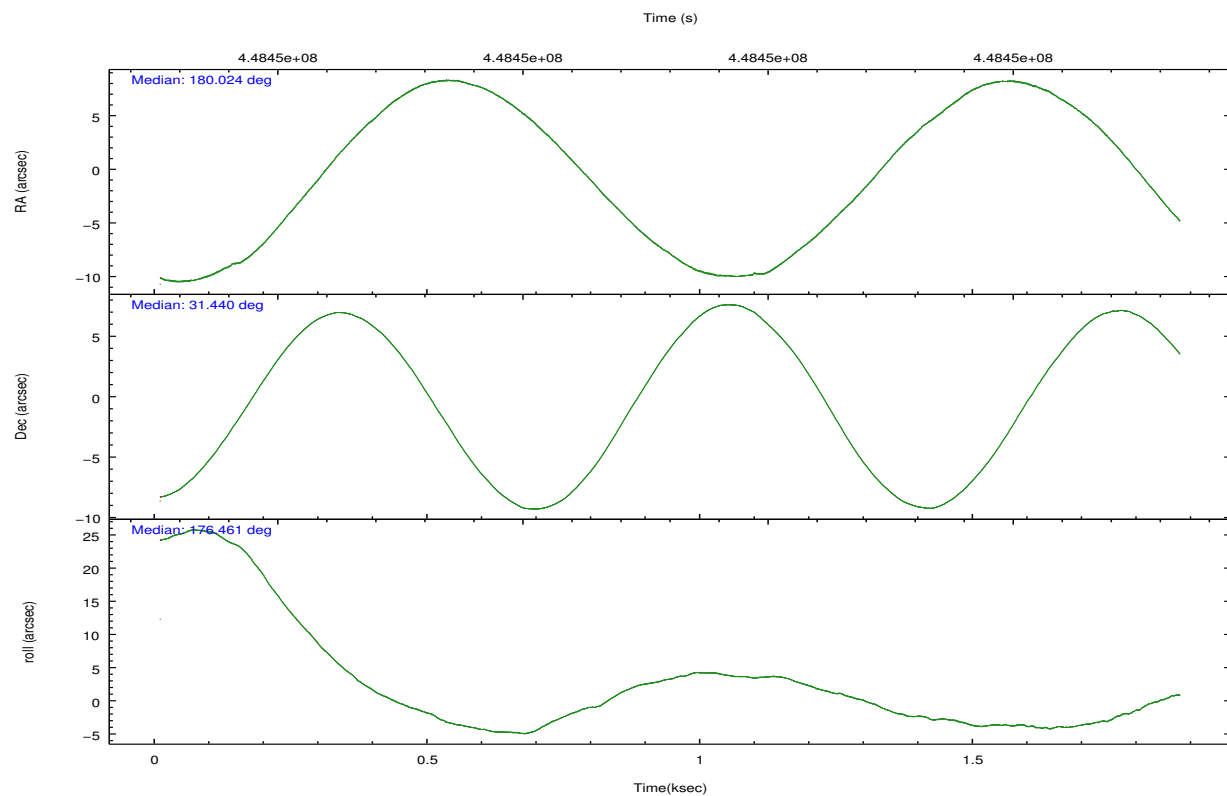
	<b>ccd 6</b>	<b>ccd 7</b>	<b>ccd 8</b>
grade 0 events	319	413	678
	4%	4%	6%
grade 1 events	7	12	10
	0%	0%	0%
grade 2 events	186	830	582
	2%	9%	5%
grade 3 events	86	349	286
	1%	4%	2%
grade 4 events	85	359	265
	1%	4%	2%
grade 5 events	310	914	498
	4%	10%	4%
grade 6 events	181	2116	667
	2%	25%	5%
grade 7 events	6228	3330	8145
	84%	40%	73%

## 2.2 Compared Parameters

Parameter	Planned	Actual	Parameter	Planned	Actual
Instrument	ACIS	ACIS	Obspar format version number	7	7
Detector	ACIS-678	ACIS-678	Obspar file type	PREDICTED	ACTUAL
Grating	NONE	NONE	Obspar update status	NONE	UPDATED
Data mode	VFAINT	VFAINT	Number of optional ACIS chips dropped	0	0
Observation mode	POINTING	POINTING	On-chip summing requested	N	N
[deg] Pointing RA	180.052243	180.0238863511203	Subarray requested	NONE	NONE
[deg] Pointing Dec	31.451961	31.43950430714158	Alternating exposures requested	N	N
[deg] Pointing Roll	176.291697	176.4631599364759	[s] Primary exposure time	0.000000	3.1
[mm] SIM focus pos	-0.684267	-0.6828225247311905			
[mm] SIM defocus	0	0.001444936568705701			
[mm] SIM translation stage pos	-190.132523	-190.1400660498719			
[mm] SIM translation stage offset	0	0.00754346686406393			
[s] Observation start time (MET)	448450057.184000	448449525.74971			
Observation start date	2012-03-18T09:26:31	2012-03-18T09:18:45			
[s] Observation end time (MET)	448451737.184000	448452205.61235			
Observation end date	2012-03-18T09:54:31	2012-03-18T10:03:25			
Read mode	TIMED	TIMED			

## 2.3 Aspect





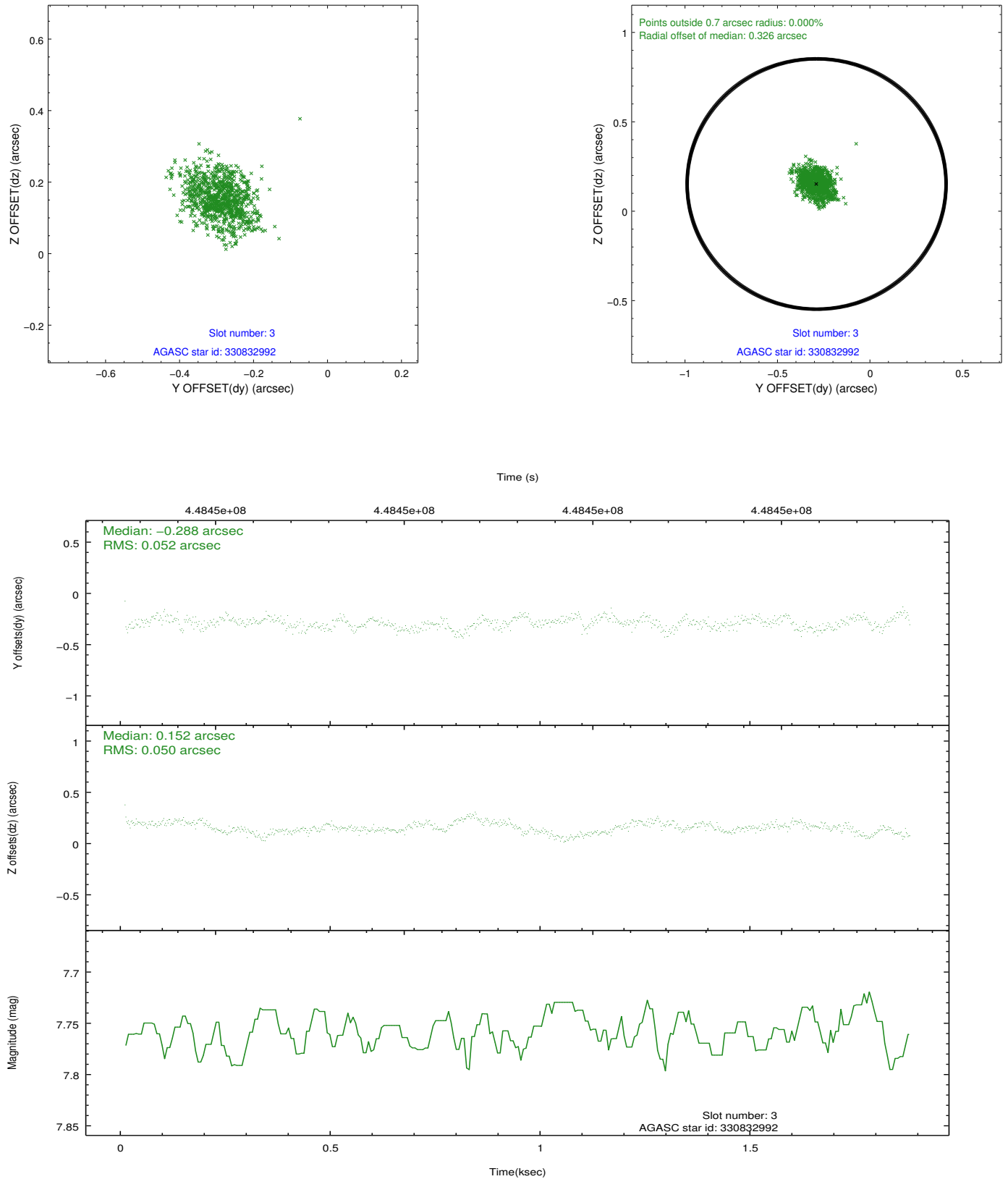
### Slot Statistics

slot	status	id	mag	n_pts	med_dy	med_dz	dr1	dr2	ra	dec	mean_y	mean_z
0	FID	ACIS-S-2	6.90	457	-0.121	-0.001	0.007	0.012	0.000000	0.000000	-770.19	-1737.20
1	FID	ACIS-S-4	6.98	457	0.242	0.058	0.005	0.010	0.000000	0.000000	2141.82	167.71
2	FID	ACIS-S-5	7.01	457	-0.153	-0.049	0.007	0.013	0.000000	0.000000	-1818.59	165.25
3	GUIDE	330832992	7.76	913	-0.288	0.152	0.078	0.124	179.618441	31.920500	1432.37	-1599.07
4	GUIDE	330838376	8.71	912	-0.674	-0.018	0.095	0.151	179.706493	31.132157	991.01	1215.41
5	GUIDE	330841752	8.85	913	0.977	0.000	0.102	0.166	179.629290	31.337380	1274.41	495.13
6	GUIDE	331219752	8.72	912	-0.269	0.048	0.128	0.186	180.687775	31.510253	-1930.46	-339.33
7	GUIDE	331220264	8.86	912	0.273	-0.190	0.150	0.219	180.532977	31.249542	-1524.16	628.19

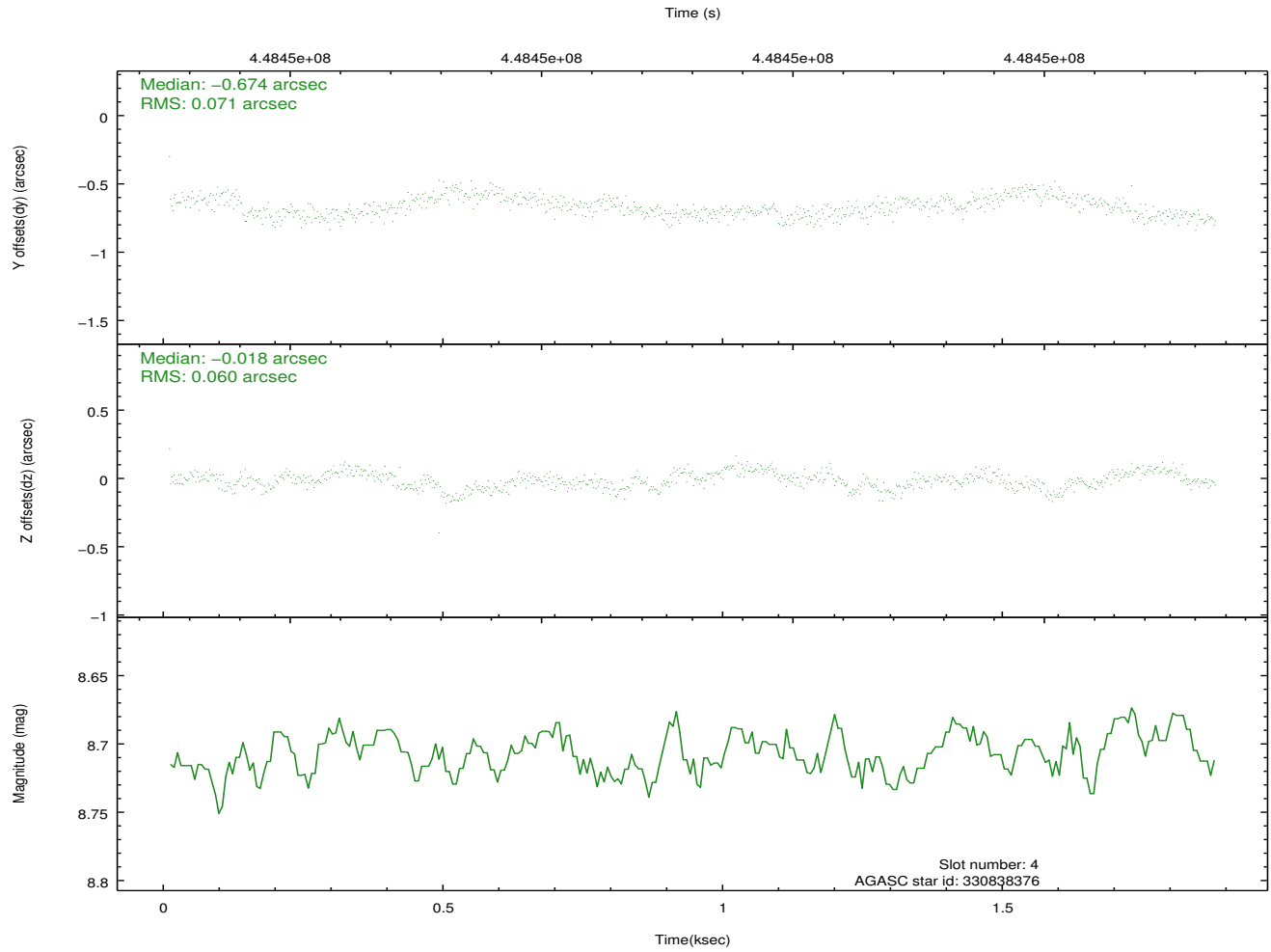
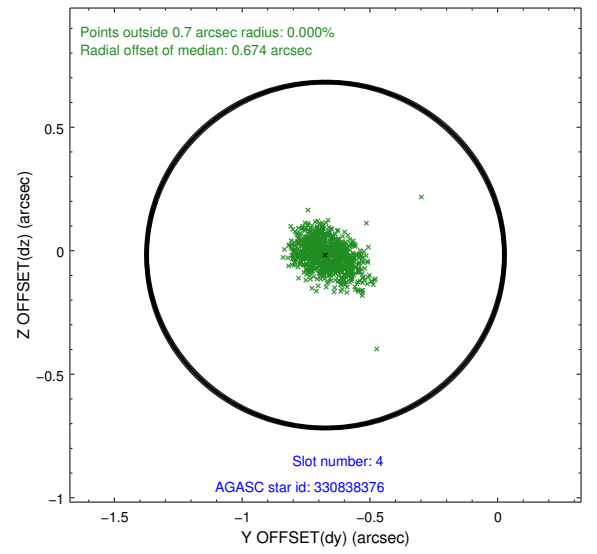
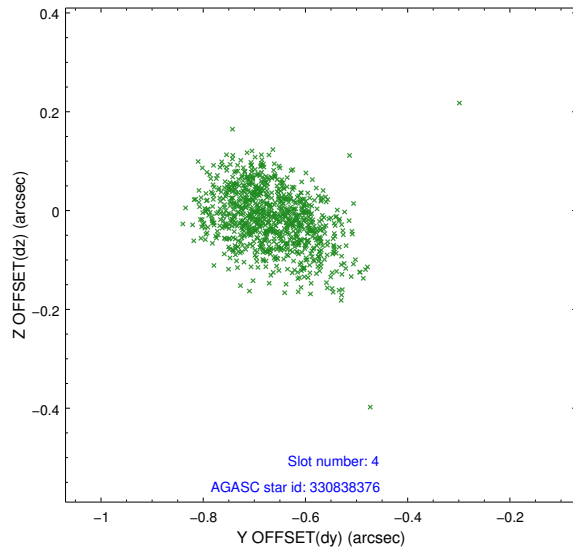


## 2.4 Star Slots

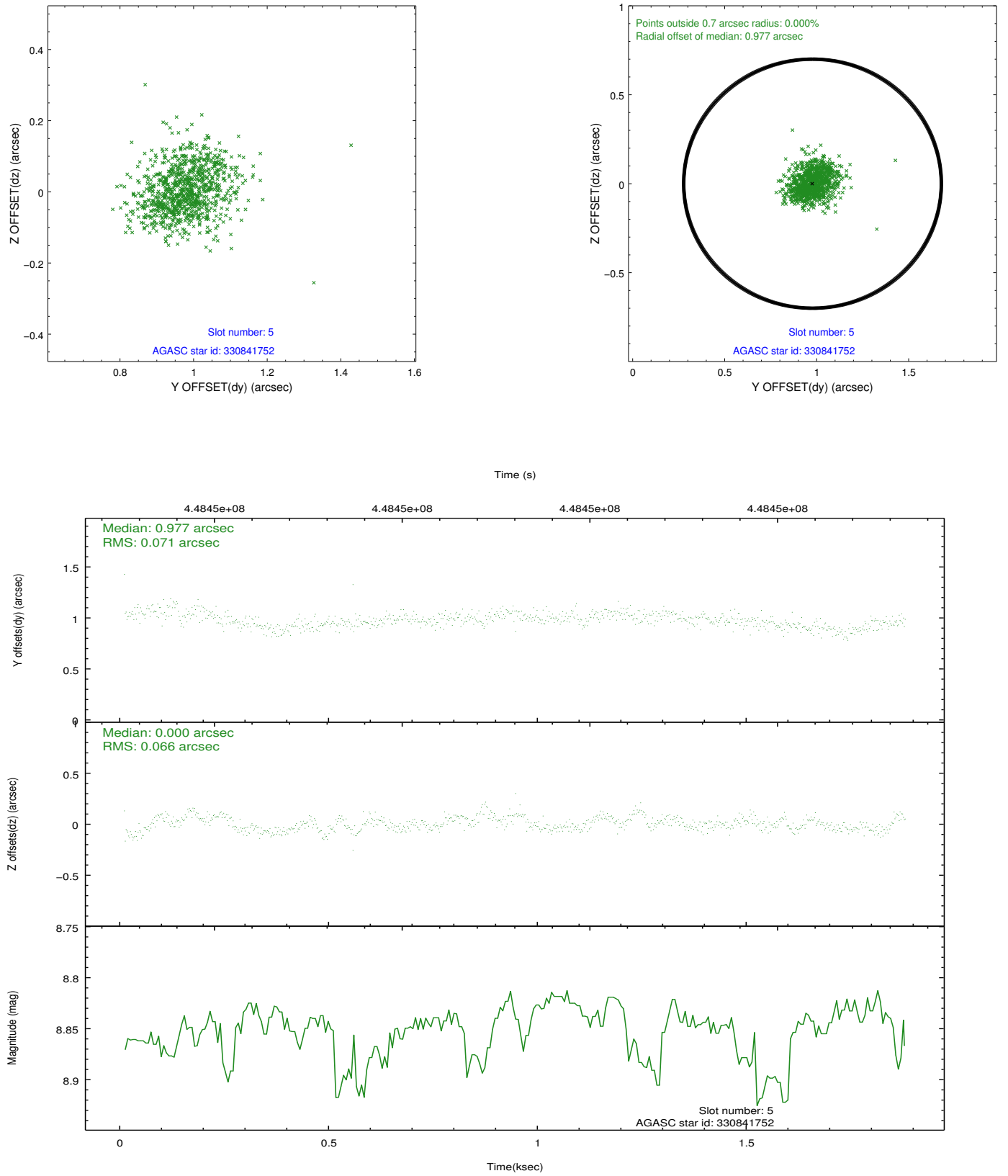
### 2.4.1 Slot 3



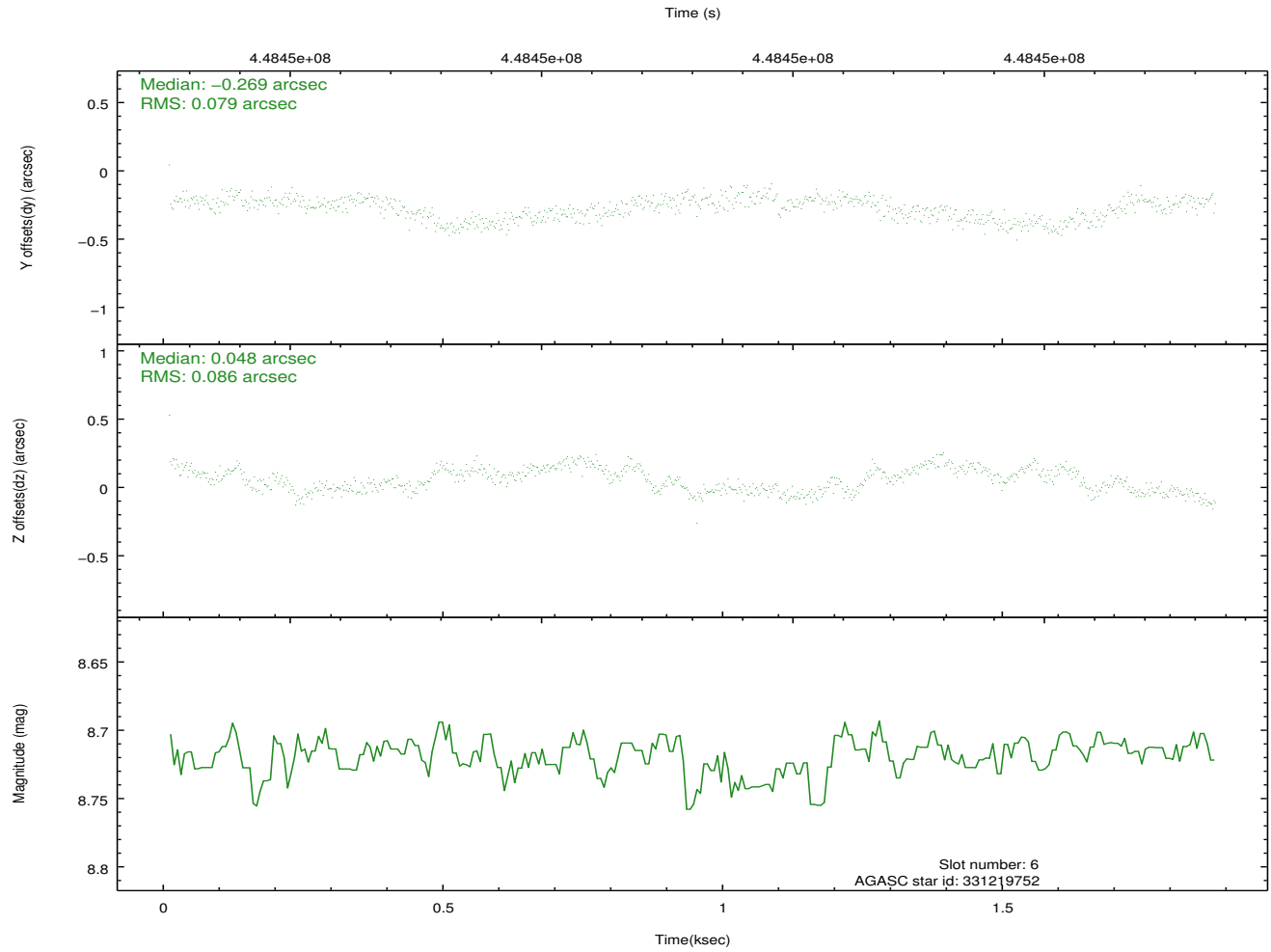
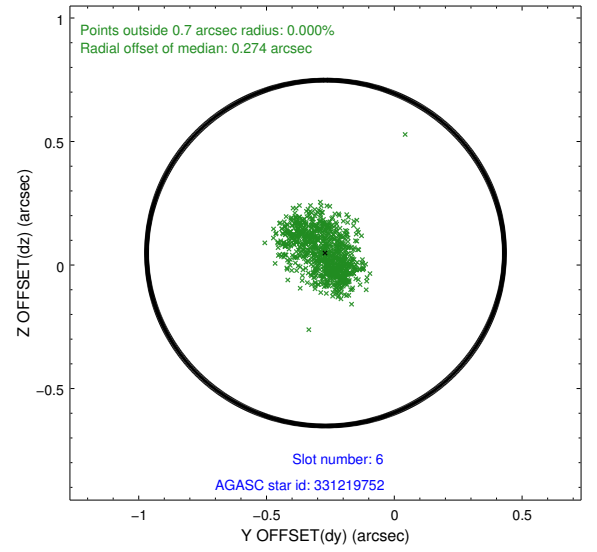
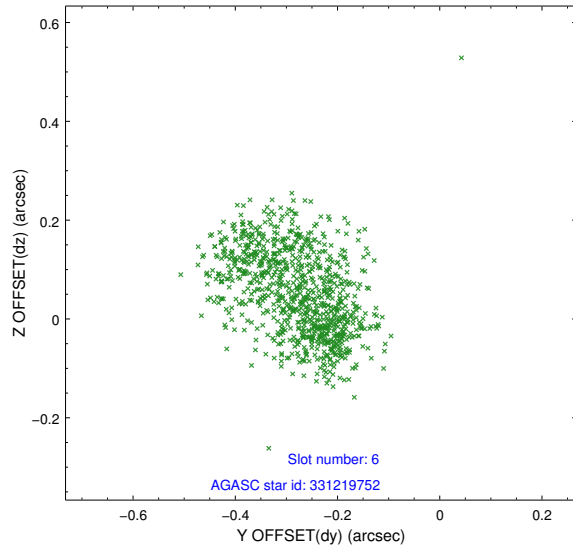
## 2.4.2 Slot 4



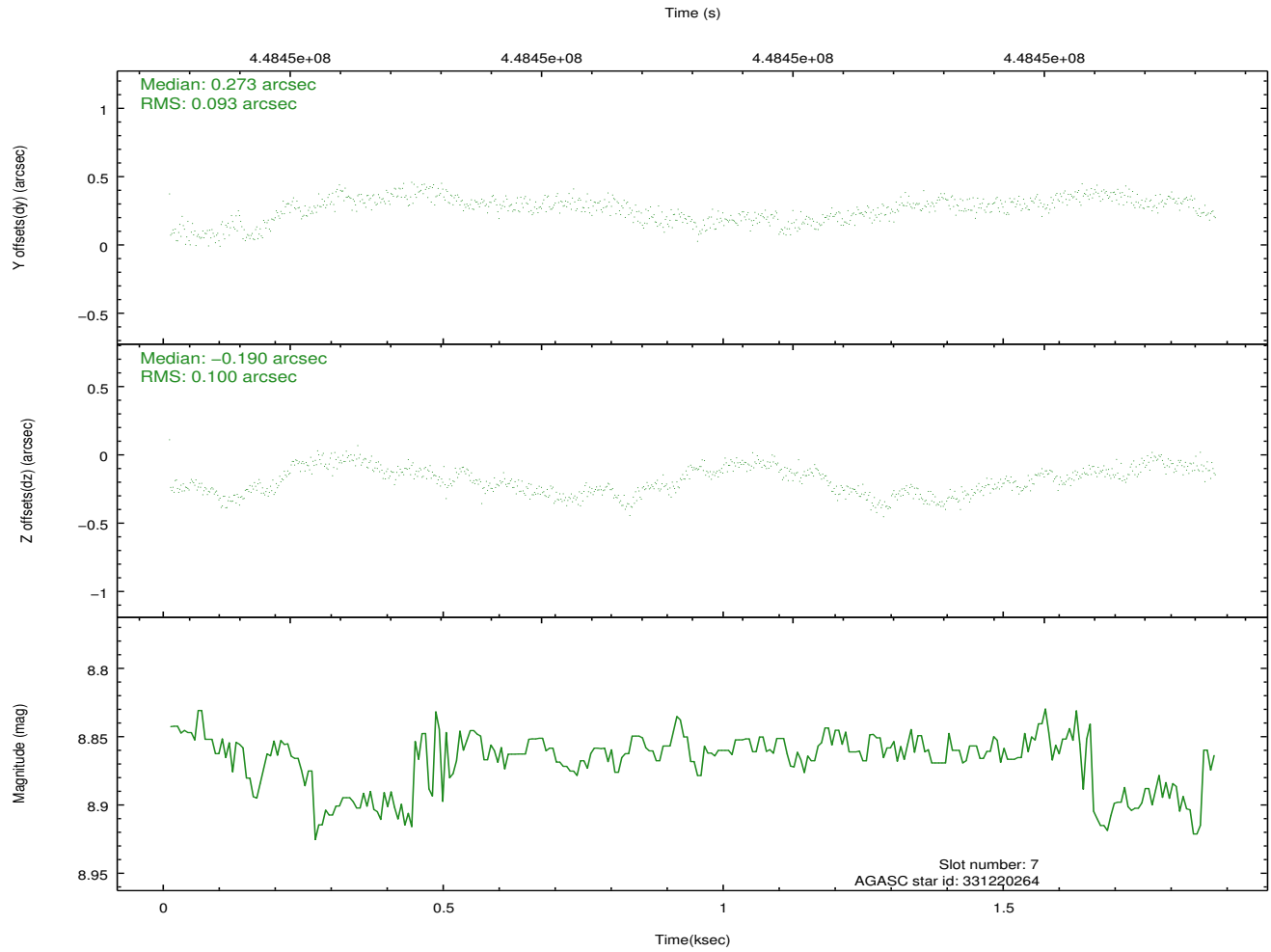
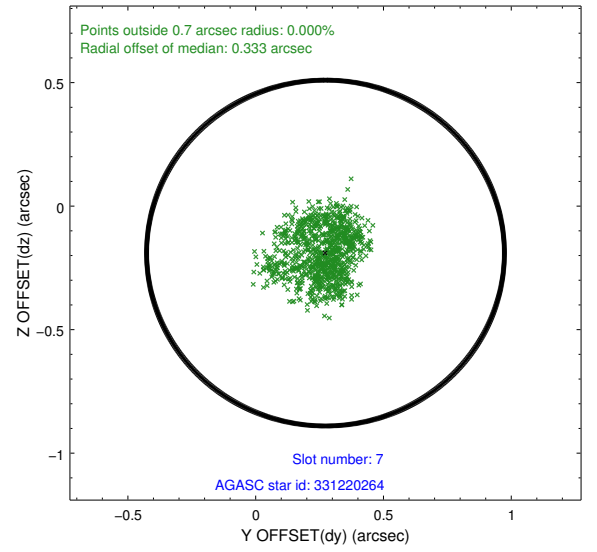
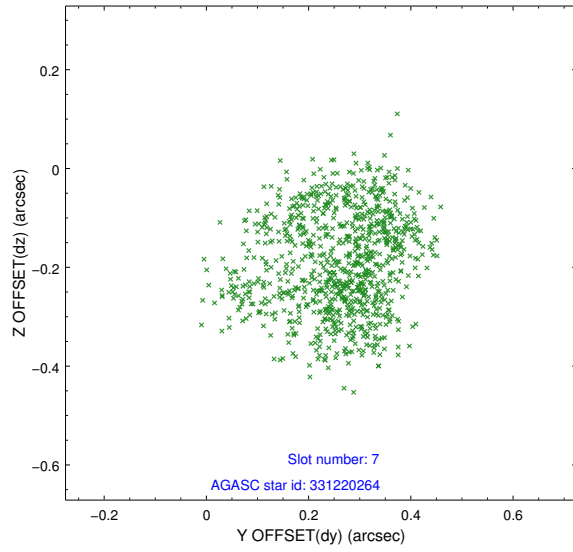
### 2.4.3 Slot 5



## 2.4.4 Slot 6

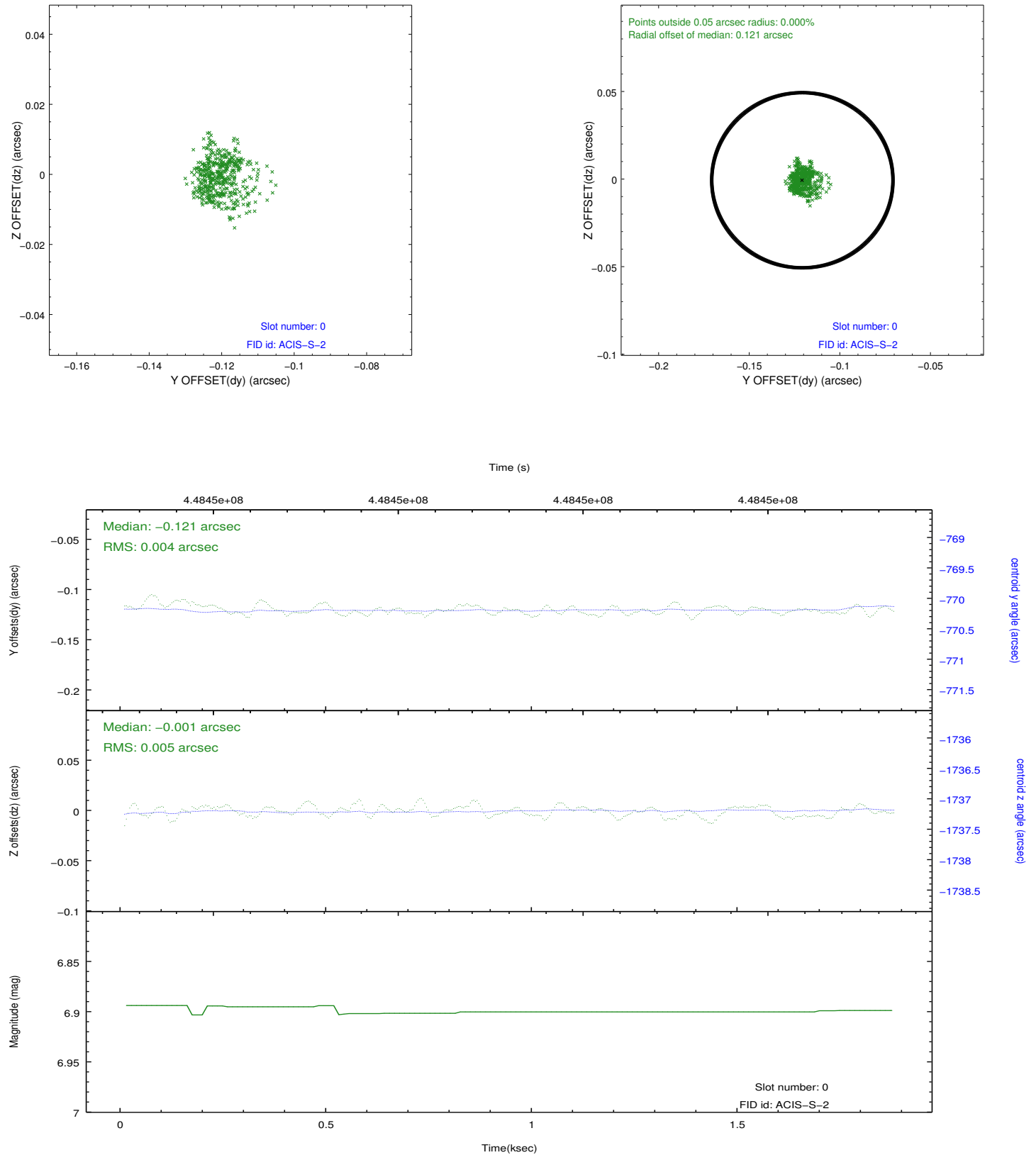


## 2.4.5 Slot 7

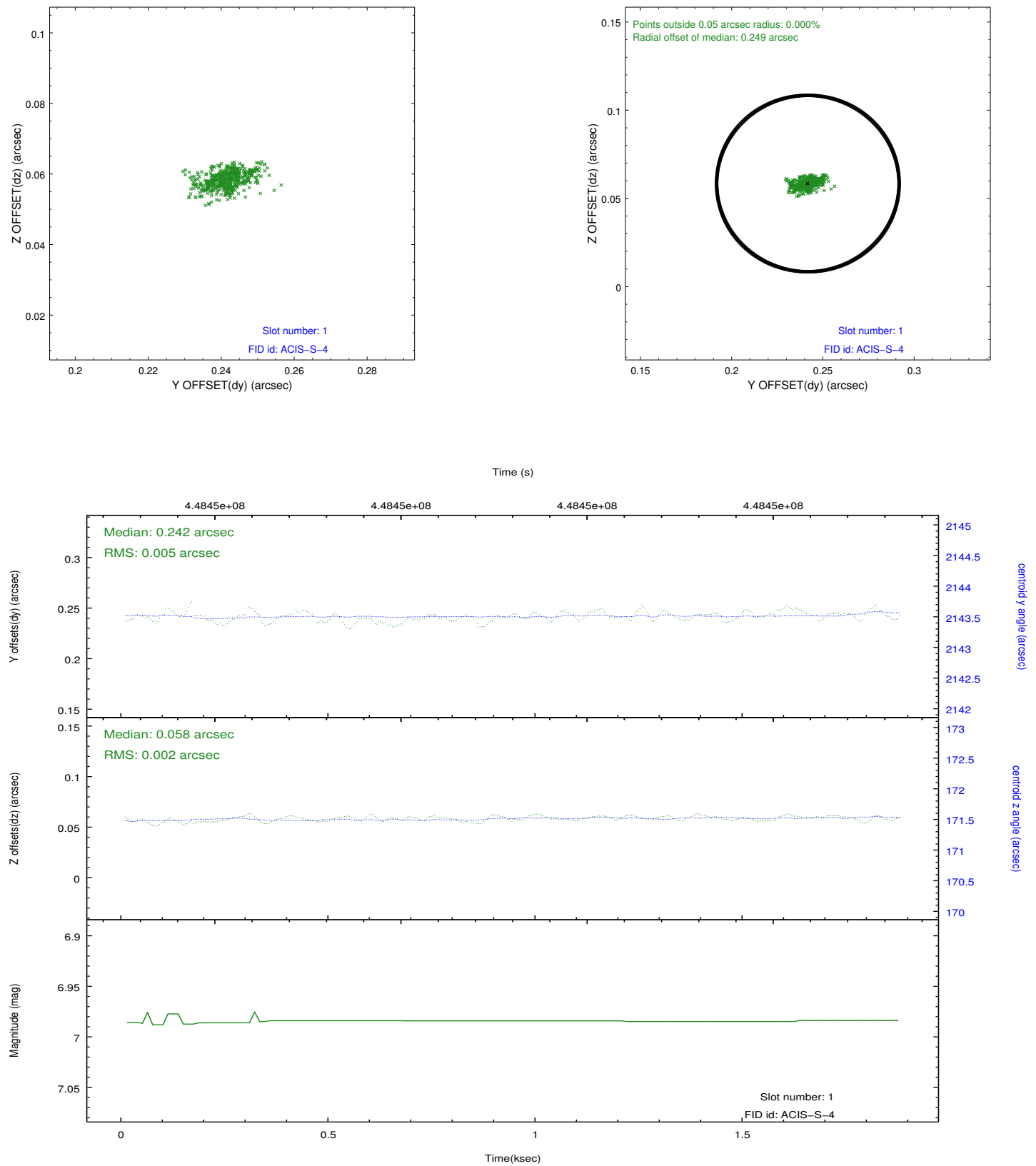


## 2.5 FID Slots

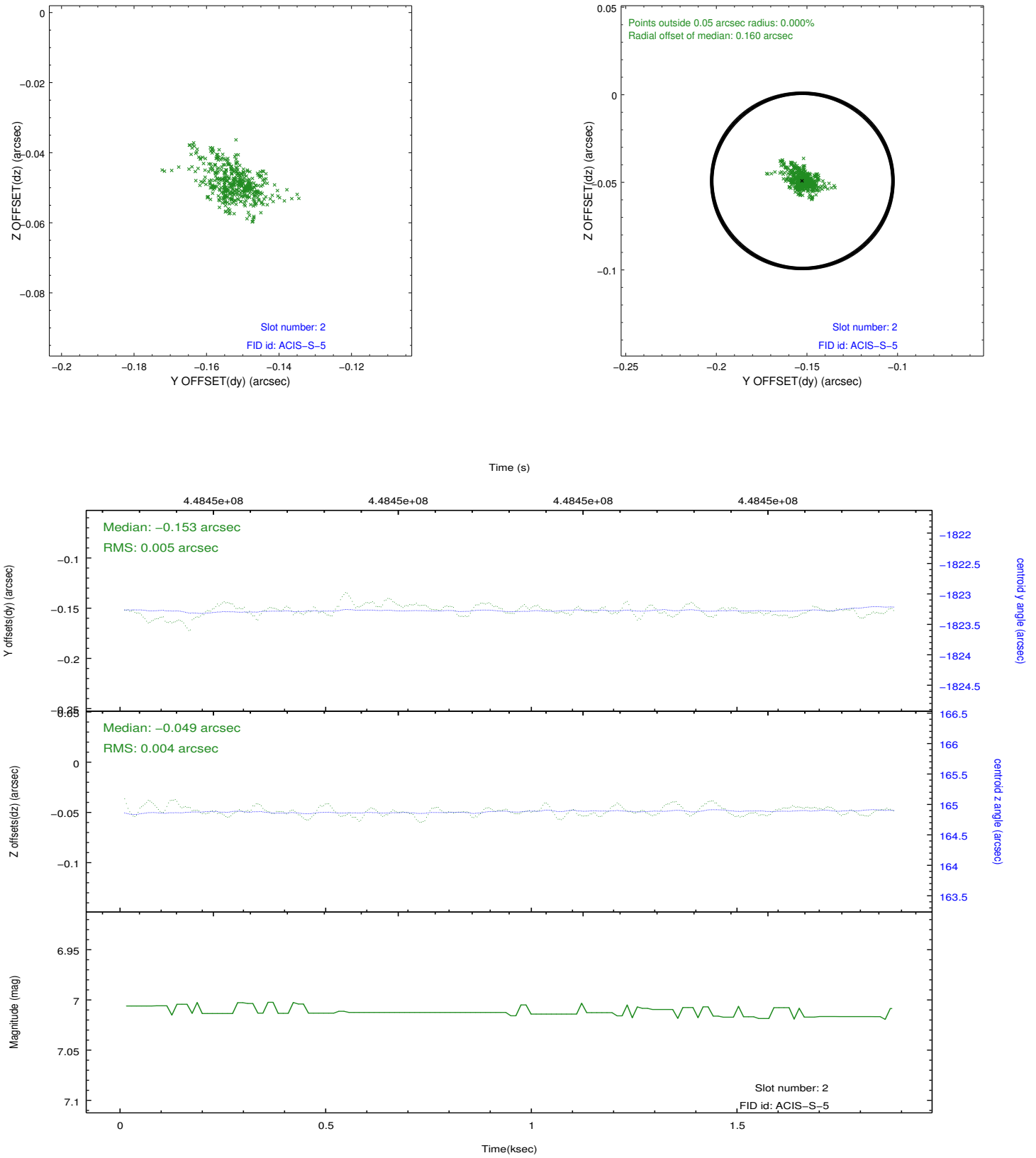
### 2.5.1 Slot 0



## 2.5.2 Slot 1



### 2.5.3 Slot 2





## A Summary

### A.1 Status

V&V Scientist	Joy Nichols
V&V Date (YYYY-MM-DD)	2012.03.19
V&V Edition	1
V&V Disposition and Status	OK
V&V Charge Time	1.4872870664597

### A.2 Comments