

# V&V Reference Report

## L2 ASCDS Version : 8.4.5

Observation 13304 - L2 Version 1  
Chandra X-Ray Center

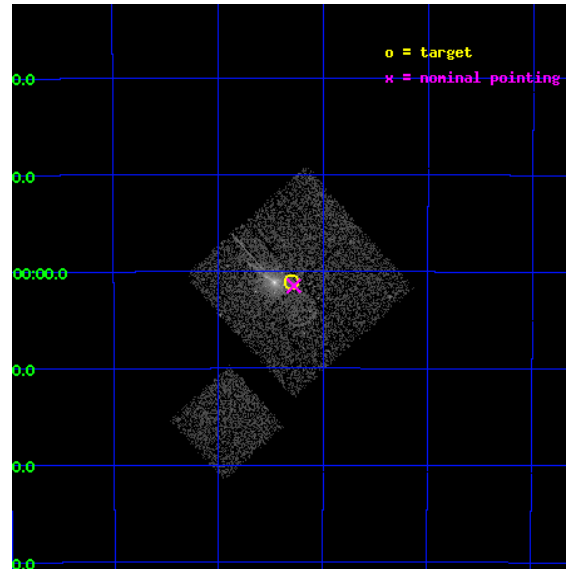
L2 Processing Date : Aug 30 2012

## Contents

<b>1</b>	<b>Front</b>	<b>2</b>
<b>2</b>	<b>OBI</b>	<b>3</b>
2.1	OBI . . . . .	3
2.1.1	Images . . . . .	3
2.1.2	Bias . . . . .	3
2.1.3	Parameters . . . . .	4
2.1.4	Events . . . . .	4
2.2	Compared Parameters . . . . .	5
2.3	Aspect . . . . .	6
2.4	Star Slots . . . . .	9
2.4.1	Slot 3 . . . . .	9
2.4.2	Slot 4 . . . . .	10
2.4.3	Slot 5 . . . . .	11
2.4.4	Slot 6 . . . . .	12
2.4.5	Slot 7 . . . . .	13
2.5	FID Slots . . . . .	14
2.5.1	Slot 0 . . . . .	14
2.5.2	Slot 1 . . . . .	15
2.5.3	Slot 2 . . . . .	16
<b>A</b>	<b>Summary</b>	<b>17</b>
A.1	Status . . . . .	17
A.2	Comments . . . . .	17

# 1 Front

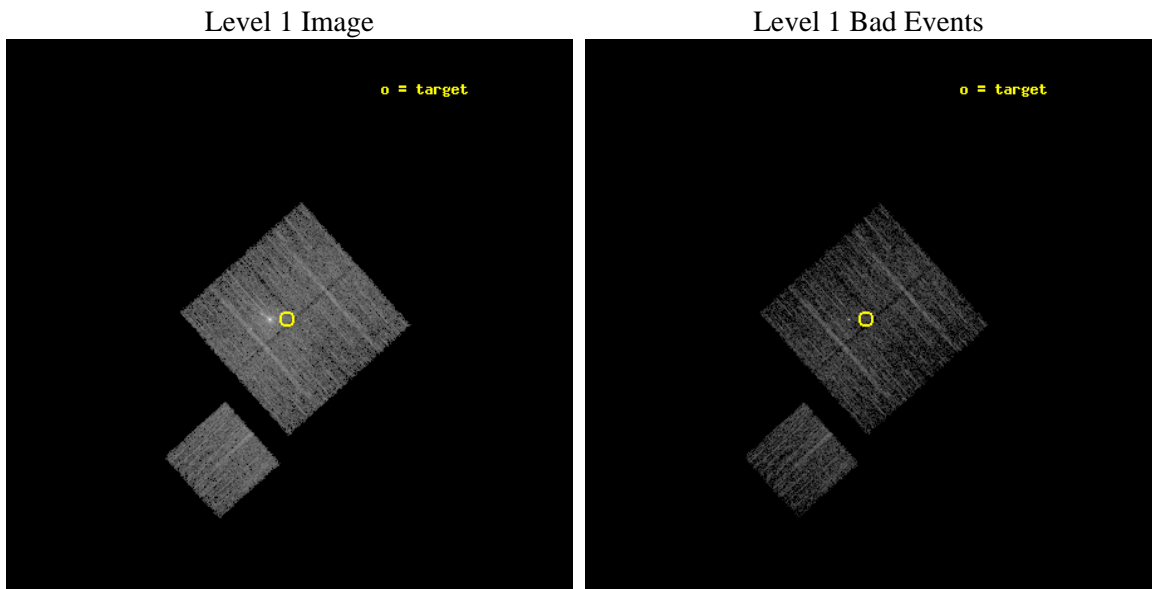
seq_num	702513	Sequence number
obs_id	13304	Observation id
title	Monitoring the Jet and the LMXB population in Centaurus A	Proposal
observer	Dr. Stephen Murray	Principal investigator
object	Centaurus A	Source name
dtcycle	0	&#160
cycle	P	events from which exps? Prim/Second/Both
ra_targ	201.32387	Observer's specified target RA [deg]
dec_targ	-43.017463	Observer's specified target Dec [deg]
ra_nom	201.31927155443	Nominal RA [deg]
dec_nom	-43.024851117065	Nominal Dec [deg]
roll_nom	228.16227759555	Nominal Roll [deg]
revision	1	Processing version of data
ontime	5080.9000390768	Sum of GTIs [s]
livetime	5014.5143395621	Livetime [s]
ontime0	5080.9000390768	Sum of GTIs [s]
ontime1	5080.9000390768	Sum of GTIs [s]
ontime2	5080.9000390768	Sum of GTIs [s]
ontime3	5080.9000390768	Sum of GTIs [s]
ontime6	5080.9000390768	Sum of GTIs [s]
l2events	23336	Number of level 2 events



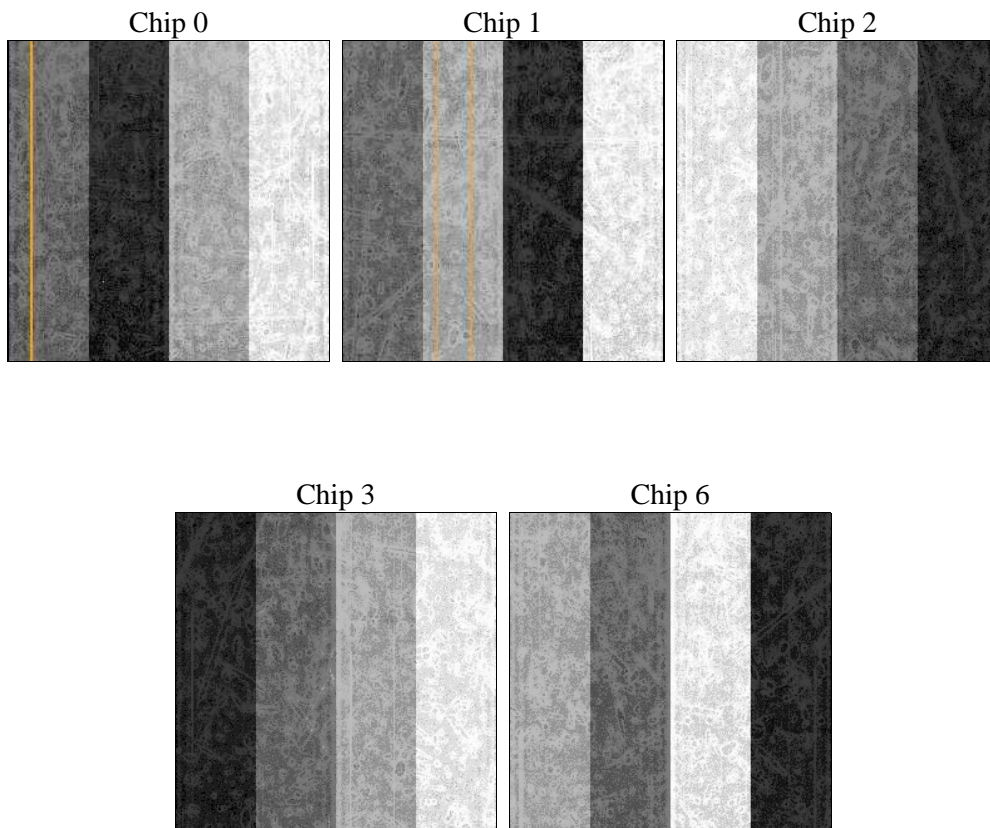
## 2 OBI

### 2.1 OBI

#### 2.1.1 Images



#### 2.1.2 Bias



### 2.1.3 Parameters

obi_num	0	Obi number	sched_exp_time	5000.472000	[s] Scheduled observation exposure time
ascdsver	8.4.5	Processing system revision	ontime	5080.9000390768	Sum of GTIs [s]
caldsver	4.5.1.1	&#160	ontime0	5080.9000390768	Sum of GTIs [s]
date	2012-08-30T07:28:21	Date and time of file creation	ontime1	5080.9000390768	Sum of GTIs [s]
revision	1	Processing version of data	ontime2	5080.9000390768	Sum of GTIs [s]
			ontime3	5080.9000390768	Sum of GTIs [s]
			ontime6	5080.9000390768	Sum of GTIs [s]
			l1events	134800	Number of level 1 events

### 2.1.4 Events

	ccd 0	ccd 1	ccd 2	ccd 3	ccd 6
level 1 events	23959	24914	26335	33944	25648
rejected events	20263	20760	22158	23273	22269
rejected %	84%	83%	84%	68%	86%

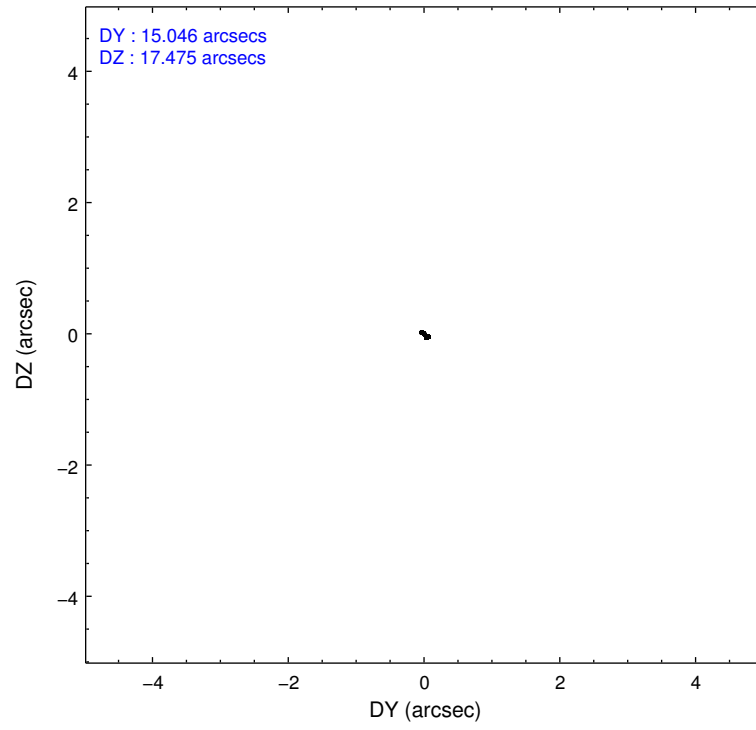
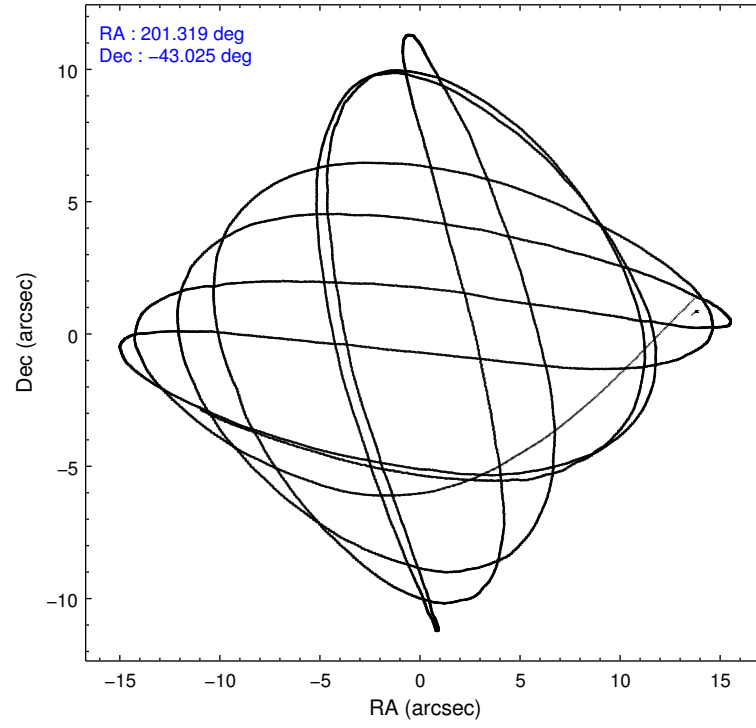
	ccd 0	ccd 1	ccd 2	ccd 3	ccd 6
grade 0 events	1537	1746	1981	6369	1229
	6%	7%	7%	18%	4%
grade 1 events	13	15	25	179	17
	0%	0%	0%	0%	0%
grade 2 events	793	921	877	1705	741
	3%	3%	3%	5%	2%
grade 3 events	358	370	309	693	343
	1%	1%	1%	2%	1%
grade 4 events	354	350	368	660	341
	1%	1%	1%	1%	1%
grade 5 events	1200	1354	1196	1585	1324
	5%	5%	4%	4%	5%
grade 6 events	654	768	642	1249	728
	2%	3%	2%	3%	2%
grade 7 events	19050	19390	20937	21504	20925
	79%	77%	79%	63%	81%

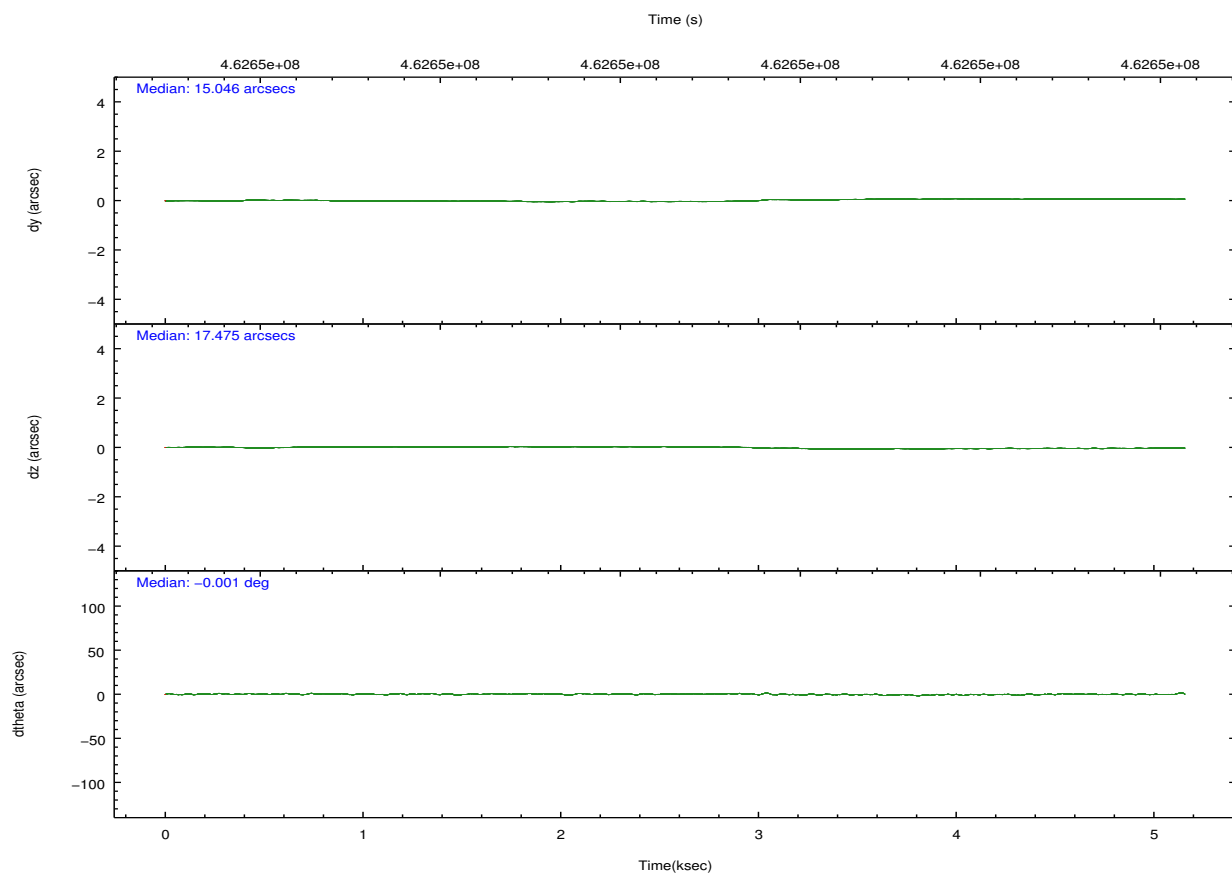
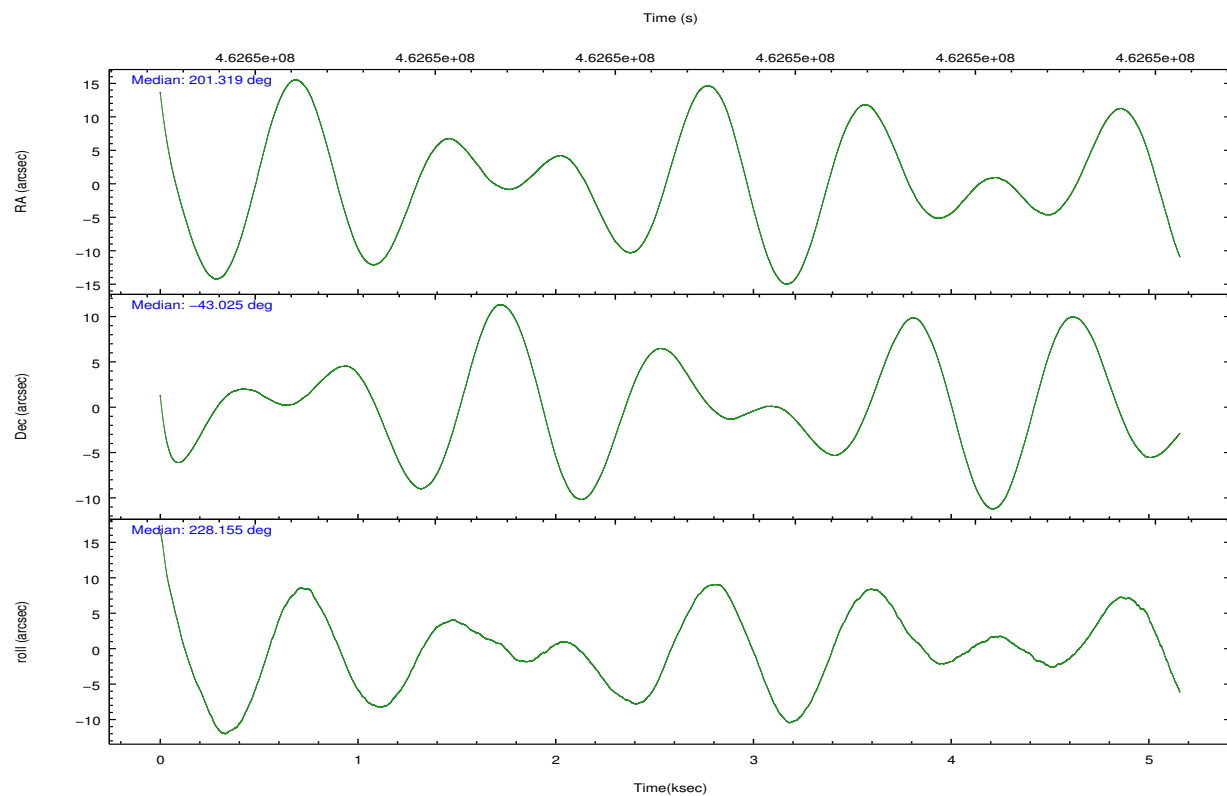


## 2.2 Compared Parameters

Parameter	Planned	Actual	Parameter	Planned	Actual
Instrument	ACIS	ACIS	Obspar format version number	7	7
Detector	ACIS-01236	ACIS-01236	Obspar file type	PREDICTED	ACTUAL
Grating	NONE	NONE	Obspar update status	NONE	UPDATED
Data mode	FAINT	FAINT	Number of optional ACIS chips dropped	0	0
Observation mode	POINTING	POINTING	On-chip summing requested	N	N
[deg] Pointing RA	201.326845	201.3192715544266	Subarray requested	NONE	NONE
[deg] Pointing Dec	-42.997879	-43.02485111706512	Alternating exposures requested	N	N
[deg] Pointing Roll	227.958757	228.1622775955486	[s] Primary exposure time	0.000000	3.1
[mm] SIM focus pos	-0.782348	-0.7809083437167272			
[mm] SIM defocus	0	0.001439871863259334			
[mm] SIM translation stage pos	-233.592463	-233.5874344608287			
[mm] SIM translation stage offset	0	-0.005018542100998502			
[s] Observation start time (MET)	462645885.184000	462644479.87675			
Observation start date	2012-08-29T16:43:38	2012-08-29T16:21:19			
[s] Observation end time (MET)	462650885.184000	462651127.00211			
Observation end date	2012-08-29T18:06:58	2012-08-29T18:12:07			
Read mode	TIMED	TIMED			

## 2.3 Aspect



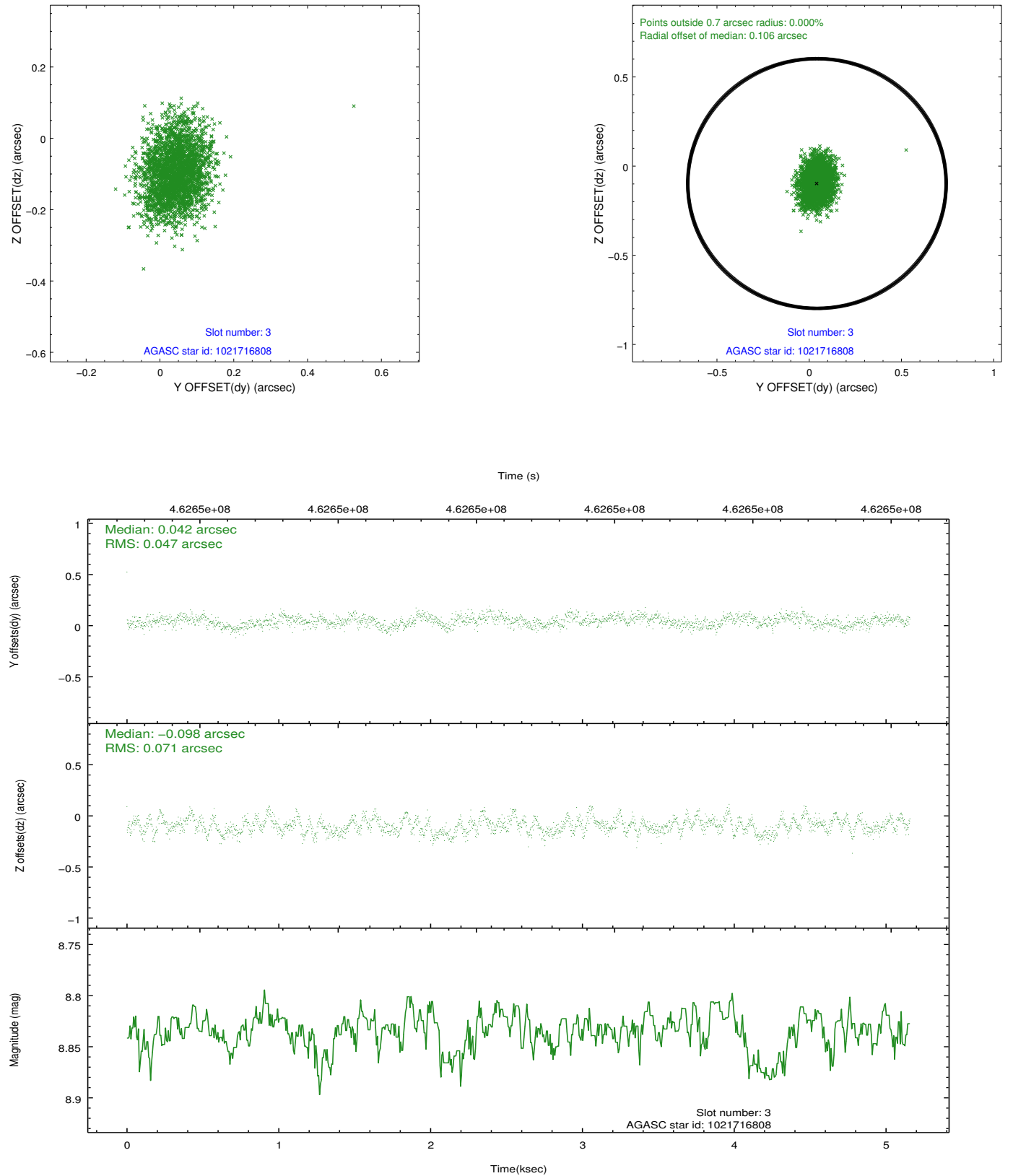


### Slot Statistics

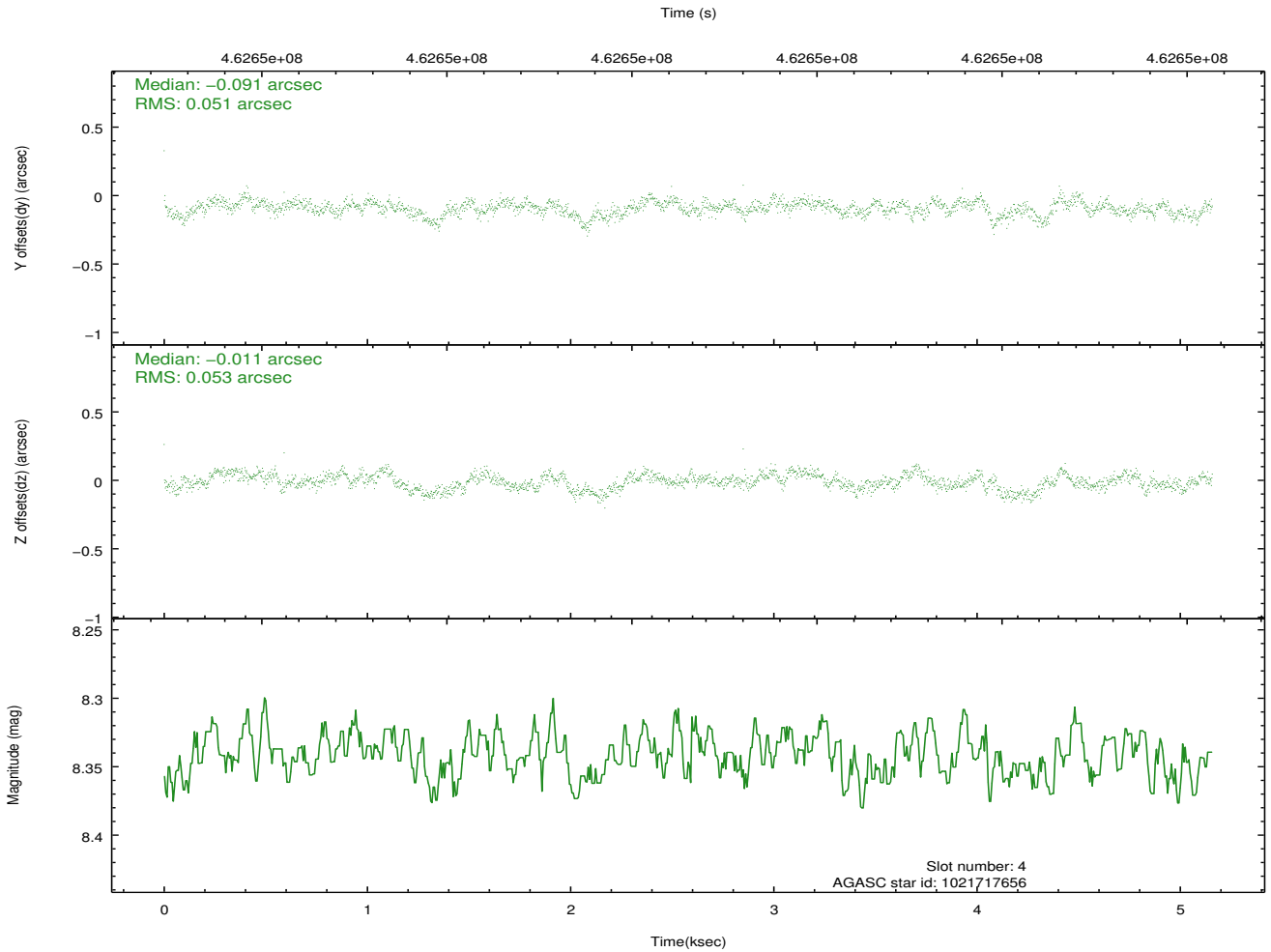
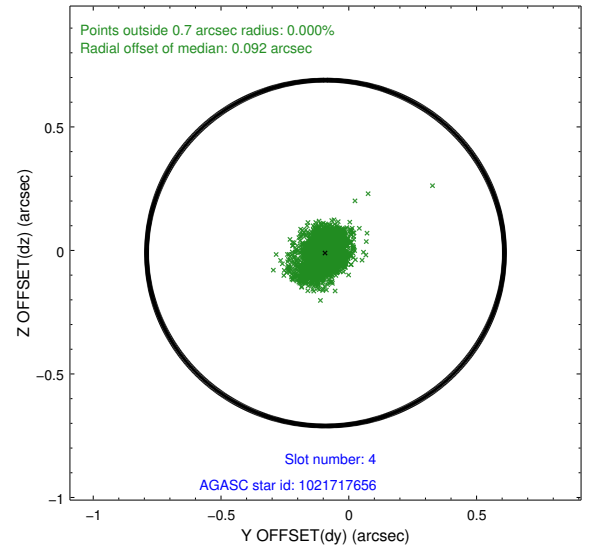
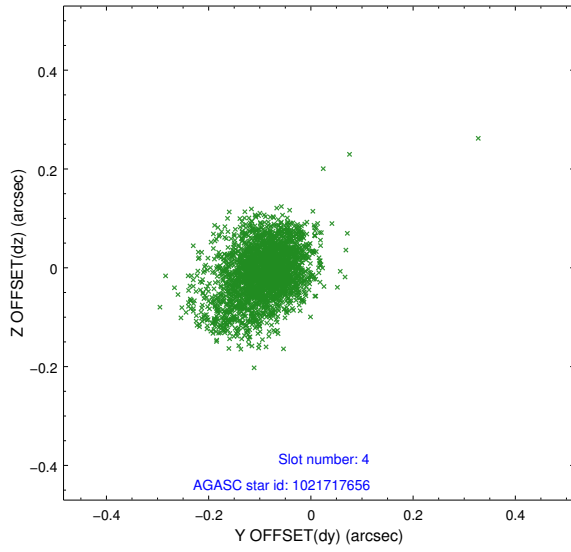
slot	status	id	mag	n_pts	med_dy	med_dz	dr1	dr2	ra	dec	mean_y	mean_z
0	FID	ACIS-I-1	7.05	1259	0.063	0.000	0.008	0.016	0.000000	0.000000	924.45	-841.14
1	FID	ACIS-I-5	7.04	1259	-0.216	0.072	0.007	0.012	0.000000	0.000000	-1823.27	1055.86
2	FID	ACIS-I-6	7.04	1259	0.062	-0.002	0.007	0.012	0.000000	0.000000	388.74	1701.60
3	GUIDE	1021716808	8.83	2517	0.042	-0.098	0.090	0.148	200.901189	-42.531395	-488.05	-1961.49
4	GUIDE	1021717656	8.34	2515	-0.091	-0.011	0.077	0.131	201.139642	-43.082878	557.26	-160.94
5	GUIDE	1021719704	7.58	2517	0.002	-0.083	0.083	0.140	200.511976	-43.050426	1584.42	-1458.07
6	GUIDE	1021721672	9.53	2513	-0.046	0.003	0.130	0.208	201.740358	-43.079729	-506.50	1006.01
7	GUIDE	1022235840	9.42	2499	0.091	0.184	0.131	0.227	201.679306	-43.544276	846.24	2002.35

## 2.4 Star Slots

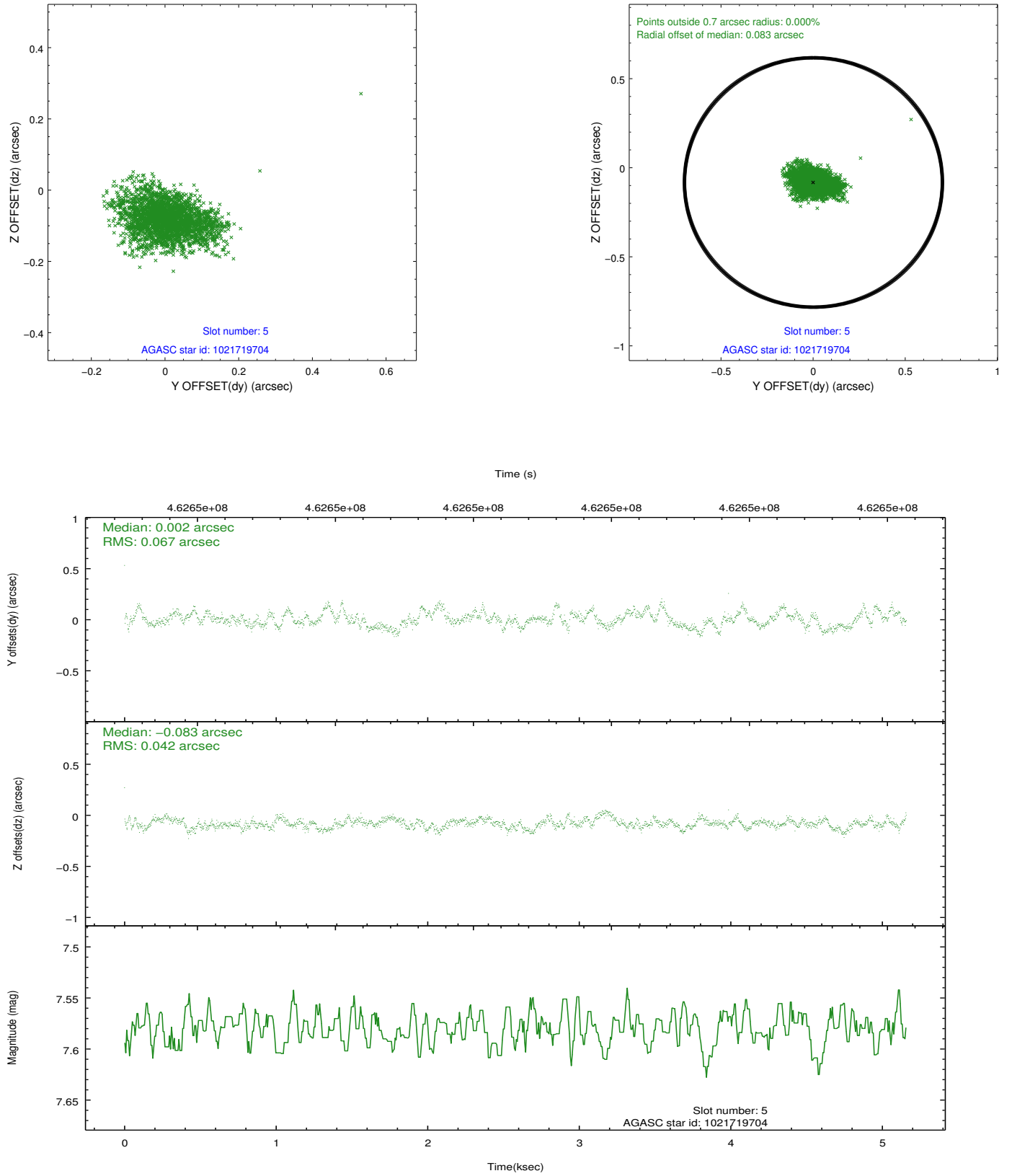
### 2.4.1 Slot 3



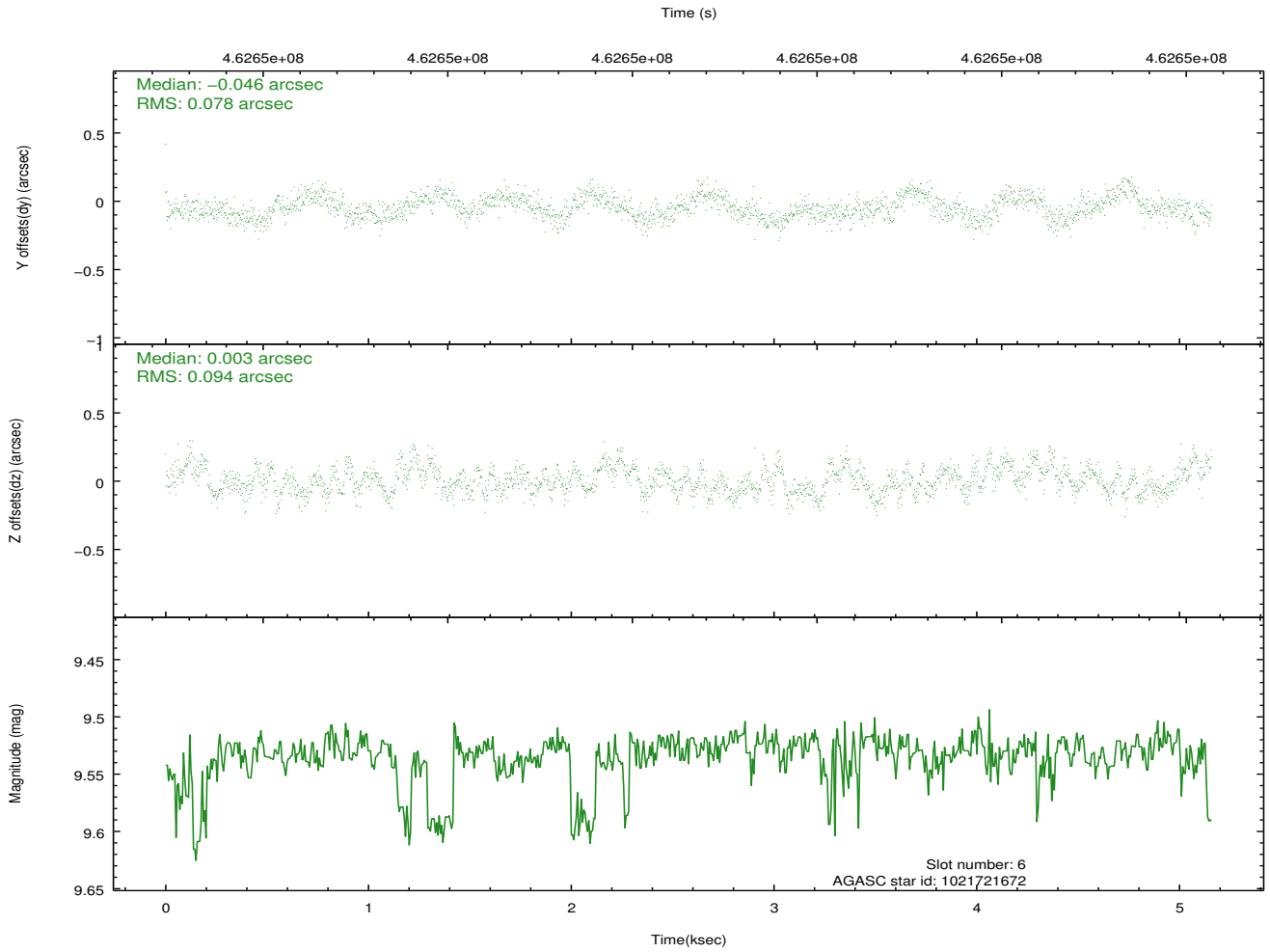
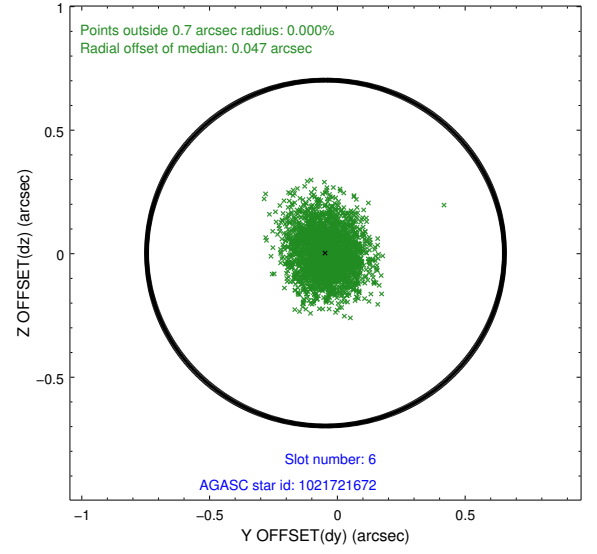
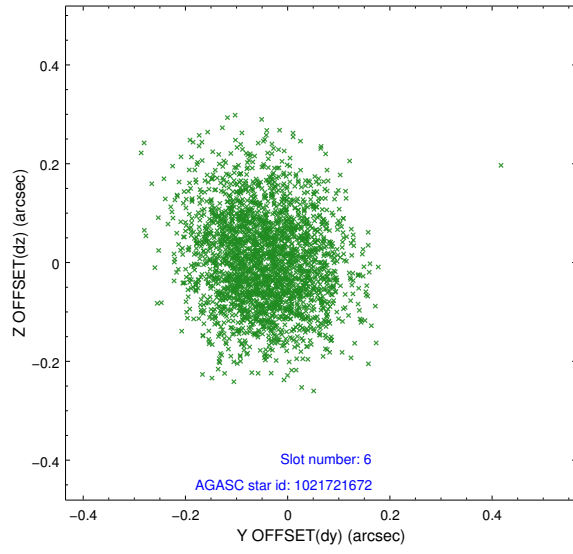
## 2.4.2 Slot 4



### 2.4.3 Slot 5

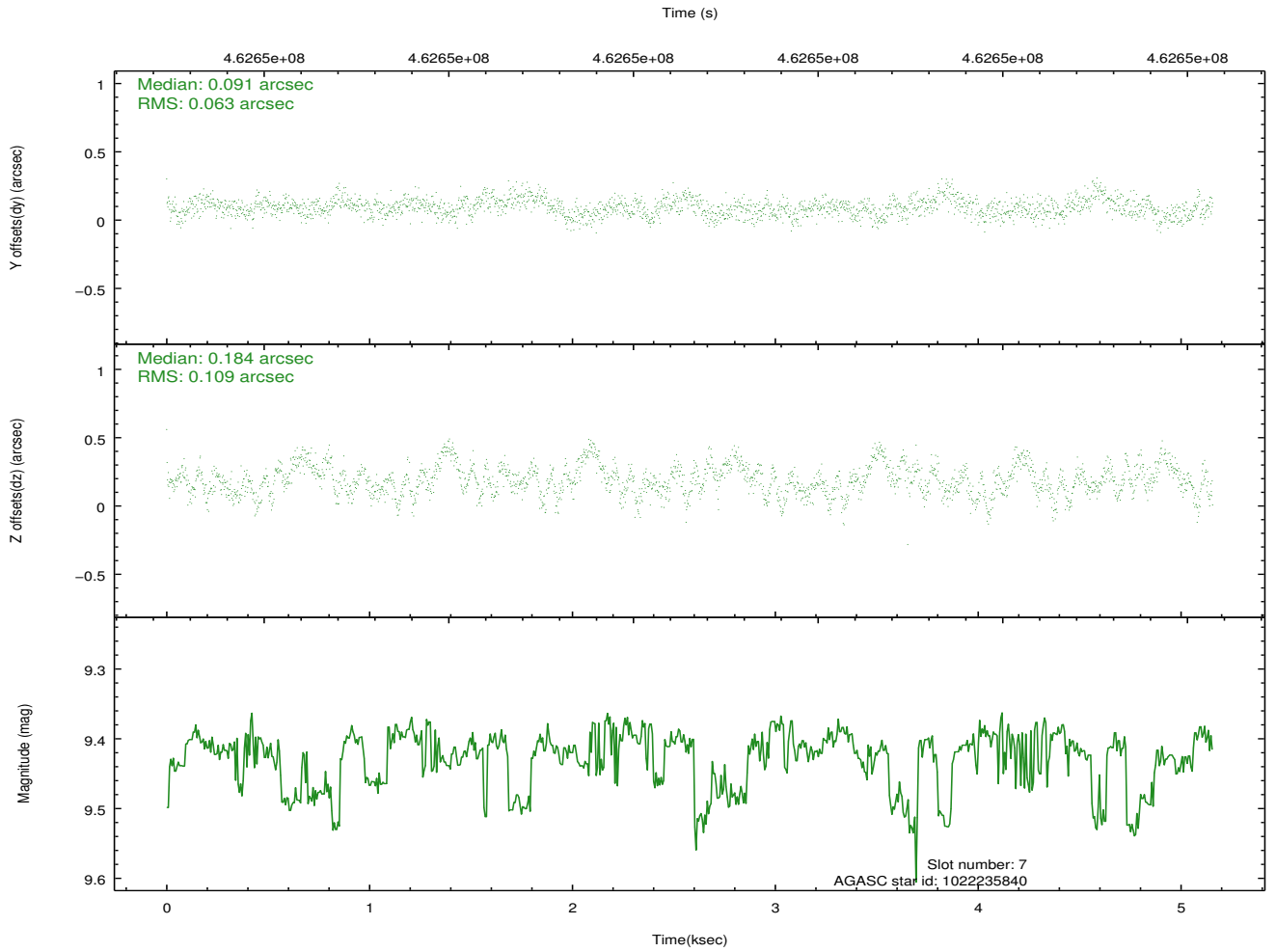
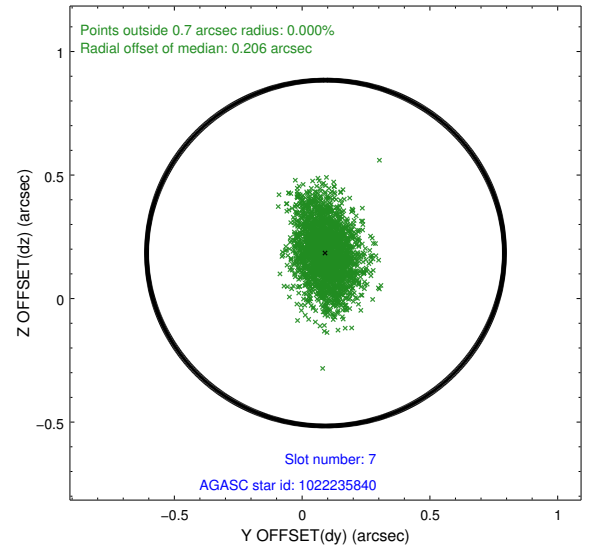
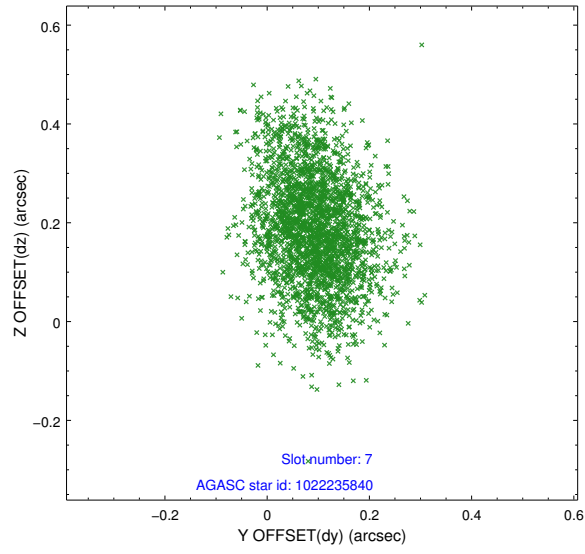


## 2.4.4 Slot 6



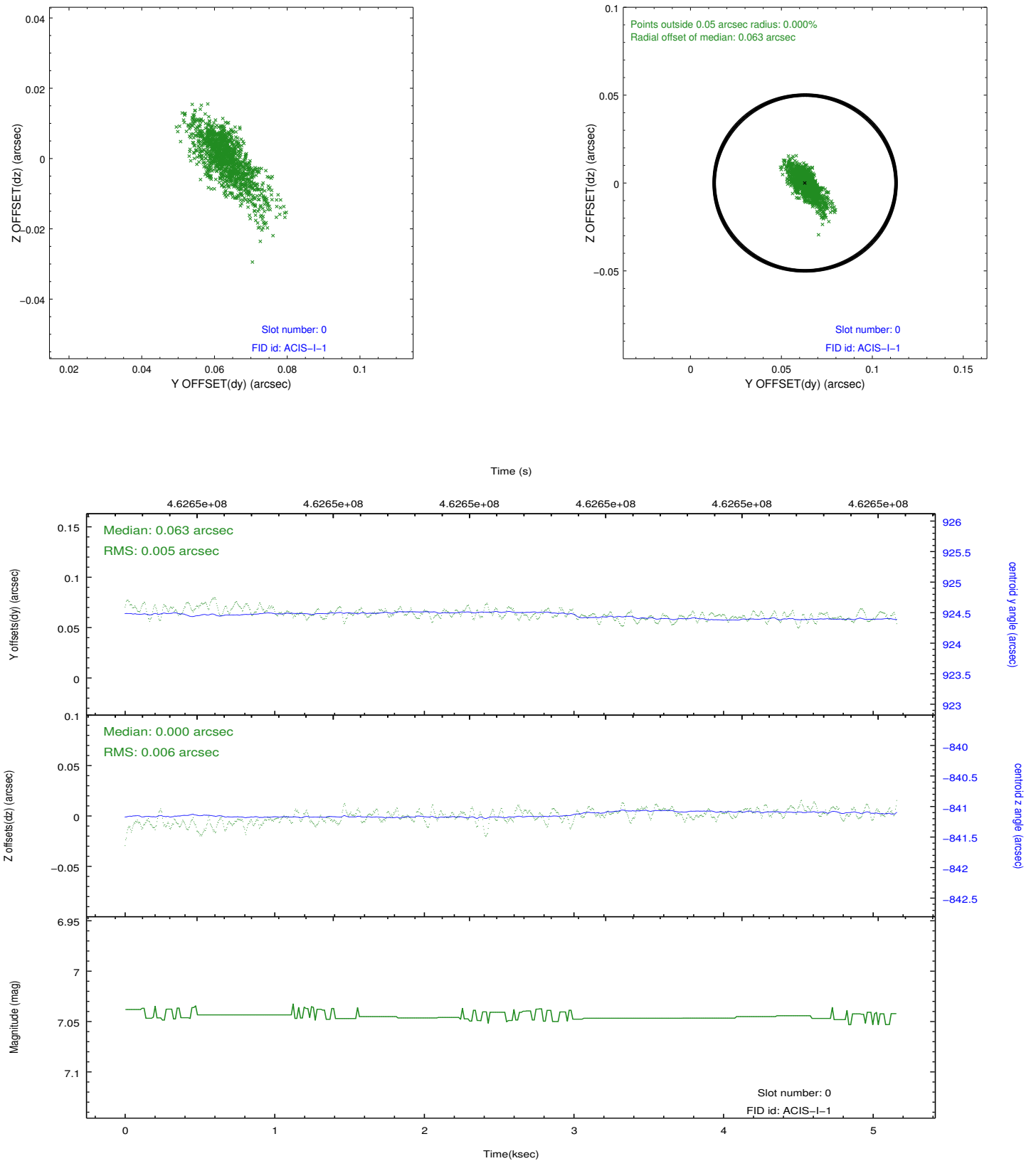


## 2.4.5 Slot 7

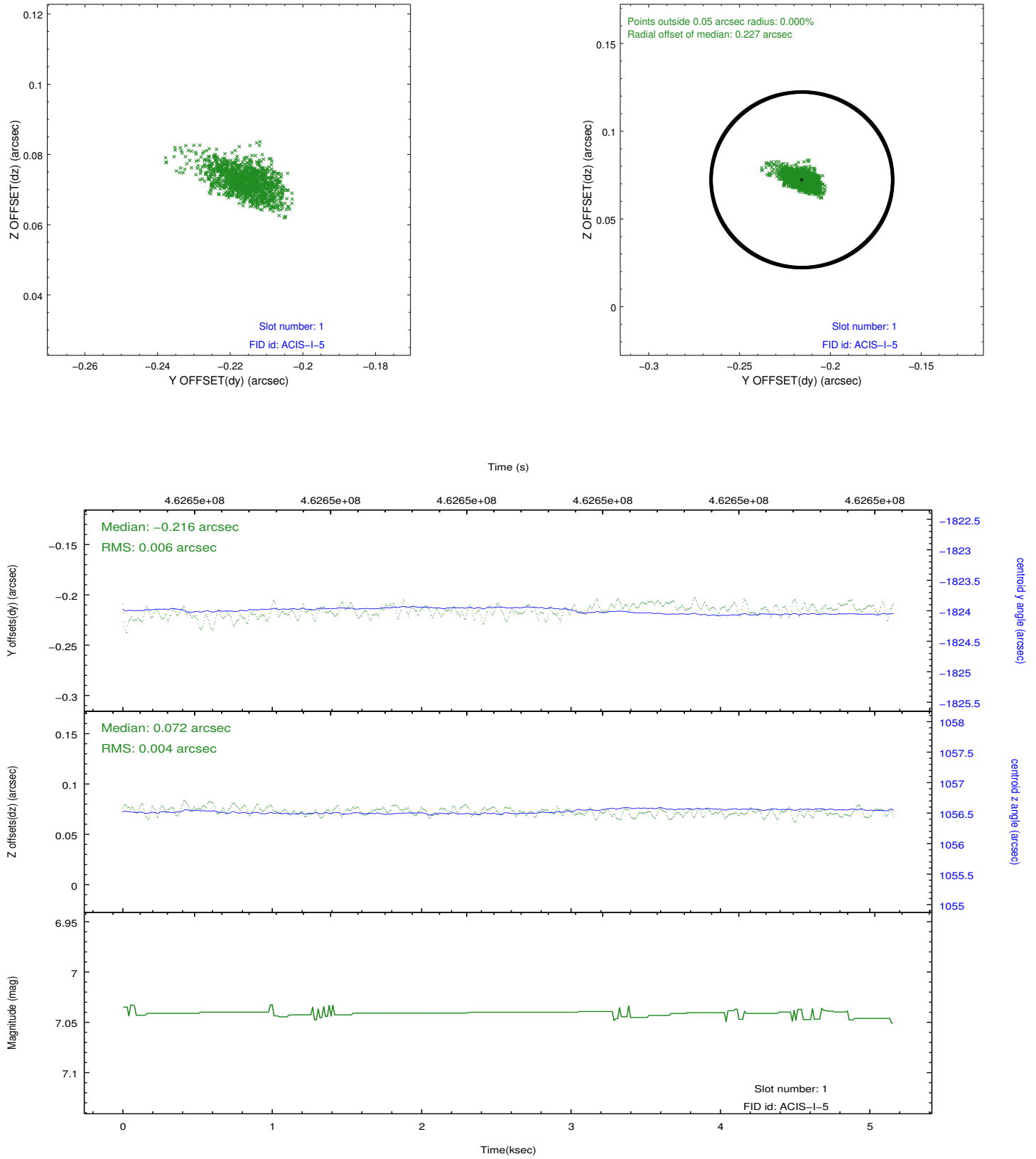


## 2.5 FID Slots

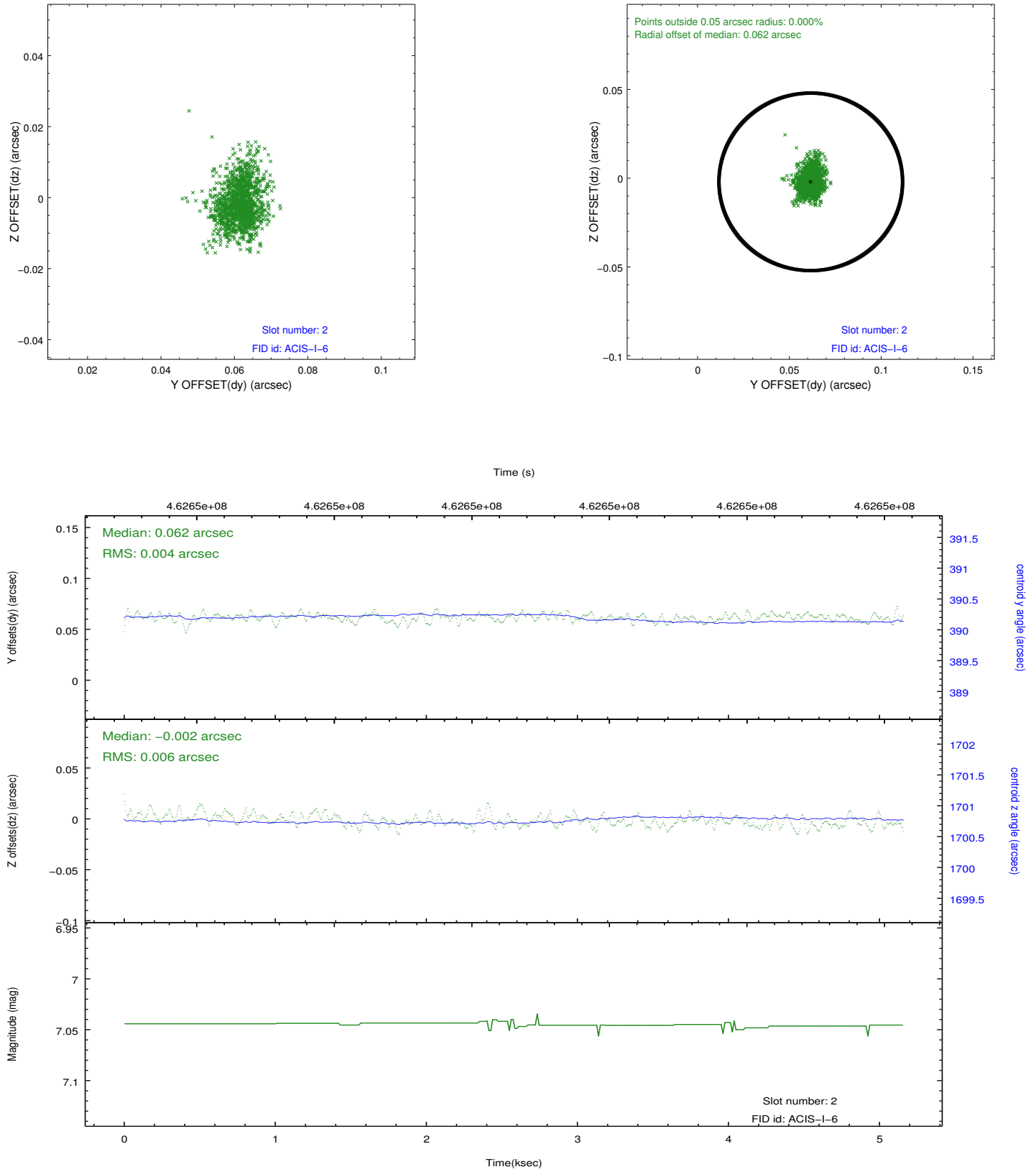
### 2.5.1 Slot 0



## 2.5.2 Slot 1



### 2.5.3 Slot 2



## A Summary

### A.1 Status

V&V Scientist	Joy Nichols
V&V Date (YYYY-MM-DD)	2012.08.30
V&V Edition	1
V&V Disposition and Status	OK
V&V Charge Time	5.0809000390768

### A.2 Comments