

V&V Reference Report

L2 ASCDS Version : 8.4.3

Observation 14382 - L2 Version 1
Chandra X-Ray Center

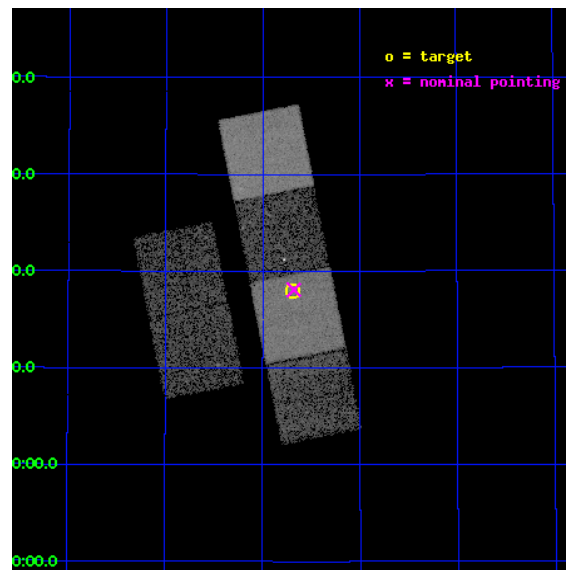
L2 Processing Date : Jan 13 2012

Contents

1	Front	2
2	OBI	3
2.1	OBI	3
2.1.1	Images	3
2.1.2	Bias	3
2.1.3	Parameters	4
2.1.4	Events	4
2.2	Compared Parameters	5
2.3	Aspect	6
2.4	Star Slots	9
2.4.1	Slot 3	9
2.4.2	Slot 4	10
2.4.3	Slot 5	11
2.4.4	Slot 6	12
2.4.5	Slot 7	13
2.5	FID Slots	14
2.5.1	Slot 0	14
2.5.2	Slot 1	15
2.5.3	Slot 2	16
A	Summary	17
A.1	Status	17
A.2	Comments	17

1 Front

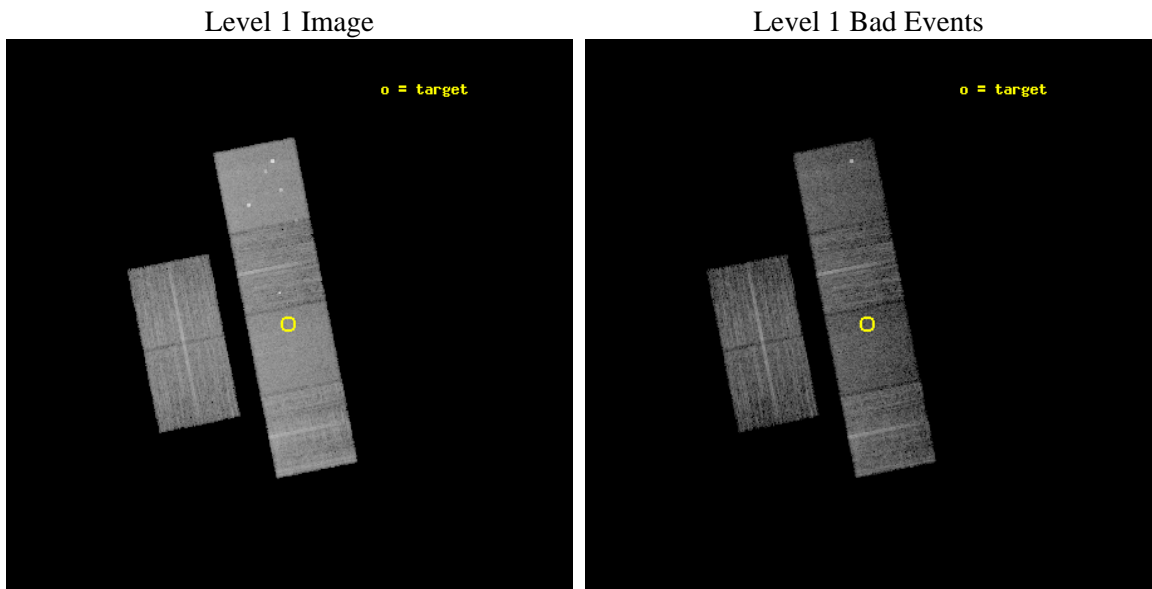
seq_num	501793	Sequence number
obs_id	14382	Observation id
title	Supernova PTF 11qej: first discovery of a radio luminous Ic SN interacting with an He shell?	Proposal title
observer	Dr Alessandra Corsi	Principal investigator
object	PTF11qej	Source name
dtcycle	0	
cycle	P	events from which exps? Prim/Second/Both
ra_targ	198.422917	Observer's specified target RA [deg]
dec_targ	47.299167	Observer's specified target Dec [deg]
ra_nom	198.41962928147	Nominal RA [deg]
dec_nom	47.301277007821	Nominal Dec [deg]
roll_nom	78.802180279389	Nominal Roll [deg]
revision	1	Processing version of data
ontime	9961.0850145817	Sum of GTIs [s]
livetime	9834.9517582817	Livetime [s]
ontime2	9961.126054585	Sum of GTIs [s]
ontime3	9960.9618945718	Sum of GTIs [s]
ontime5	9961.0439745784	Sum of GTIs [s]
ontime6	9961.0029345751	Sum of GTIs [s]
ontime7	9961.0850145817	Sum of GTIs [s]
ontime8	9960.9208545685	Sum of GTIs [s]
l2events	108141	Number of level 2 events



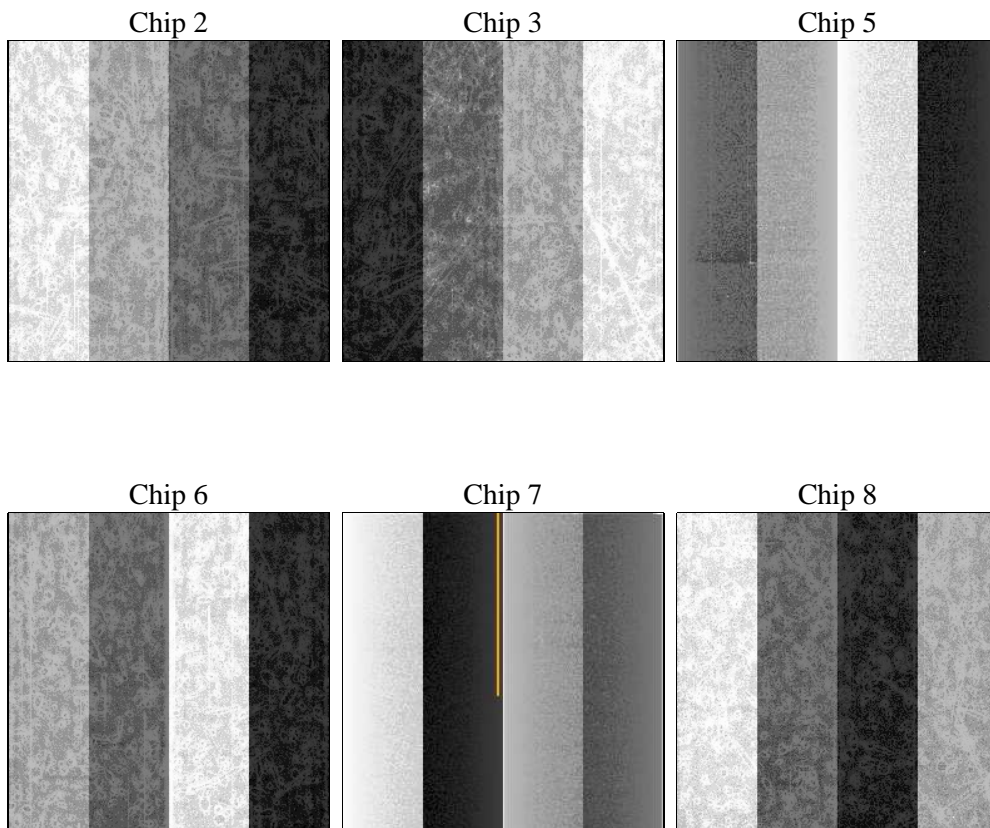
2 OBI

2.1 OBI

2.1.1 Images



2.1.2 Bias



2.1.3 Parameters

obi_num	0	Obi number	sched_exp_time	10000.000000	[s] Scheduled observation exposure time
ascdsver	8.4.3	Processing system revision	ontime	9961.0850145817	Sum of GTIs [s]
caldbver	4.4.7	 	ontime2	9961.126054585	Sum of GTIs [s]
date	2012-01-13T18:52:11	Date and time of file creation	ontime3	9960.9618945718	Sum of GTIs [s]
revision	1	Processing version of data	ontime5	9961.0439745784	Sum of GTIs [s]
			ontime6	9961.0029345751	Sum of GTIs [s]
			ontime7	9961.0850145817	Sum of GTIs [s]
			ontime8	9960.9208545685	Sum of GTIs [s]
			l1events	462211	Number of level 1 events

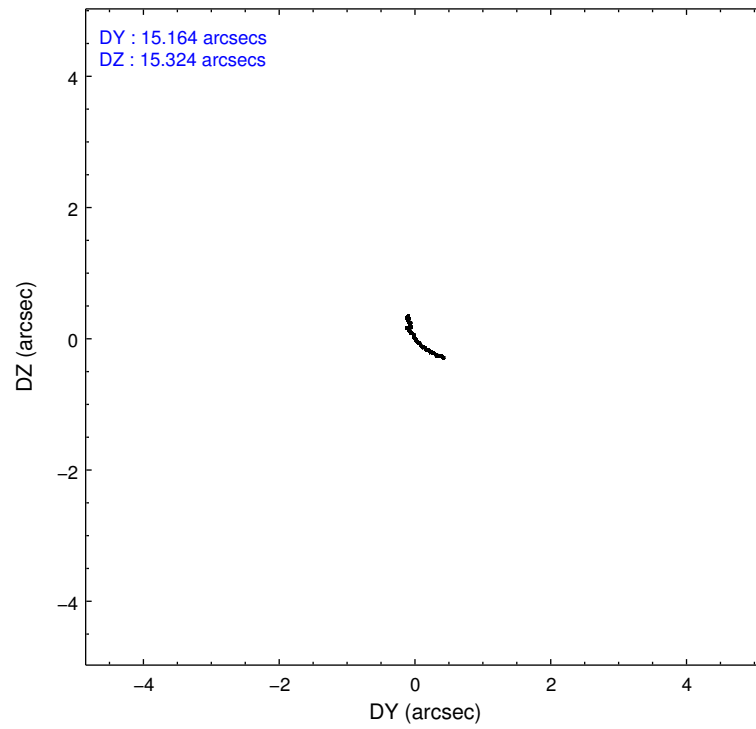
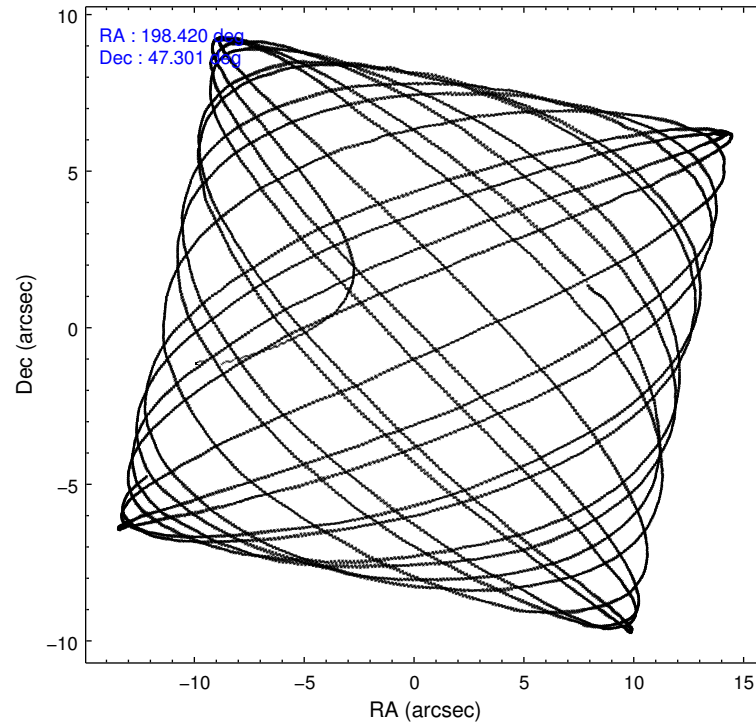
2.1.4 Events

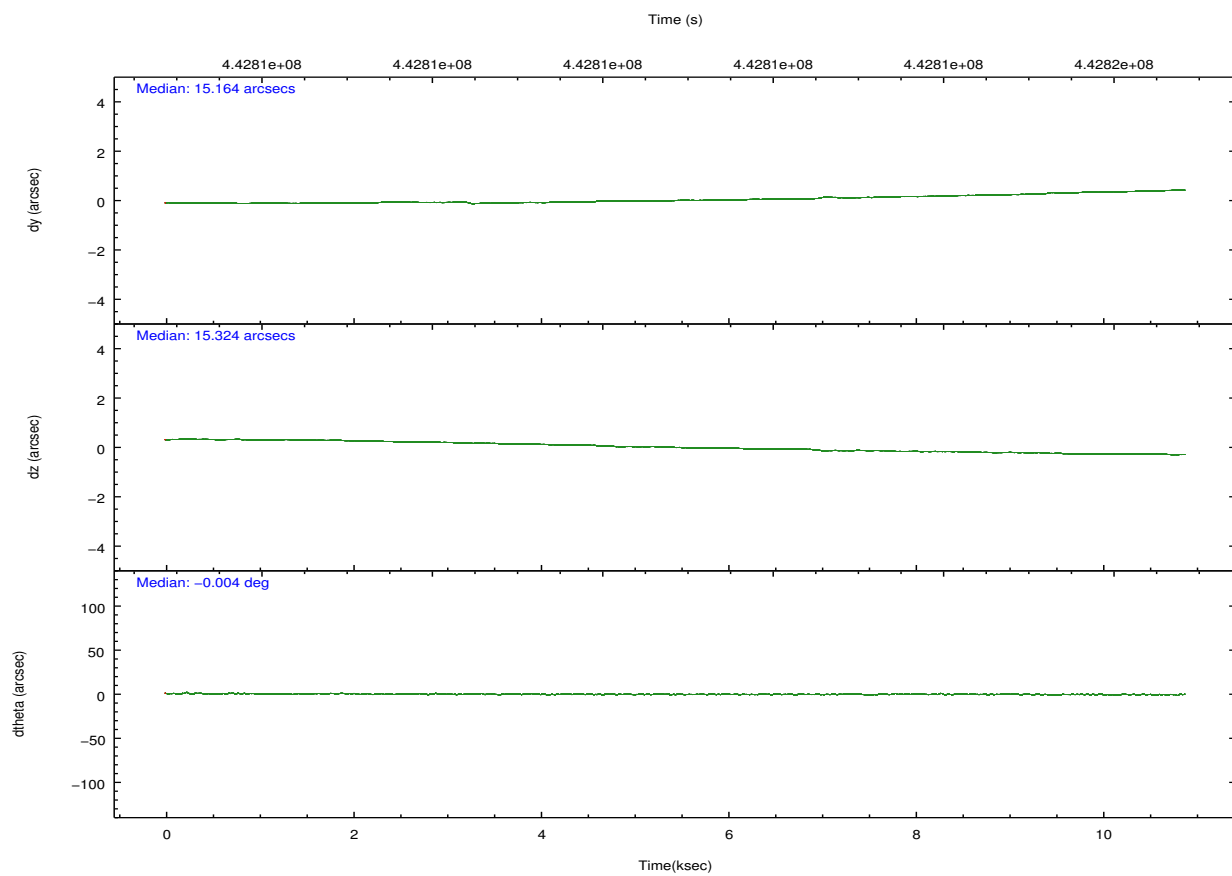
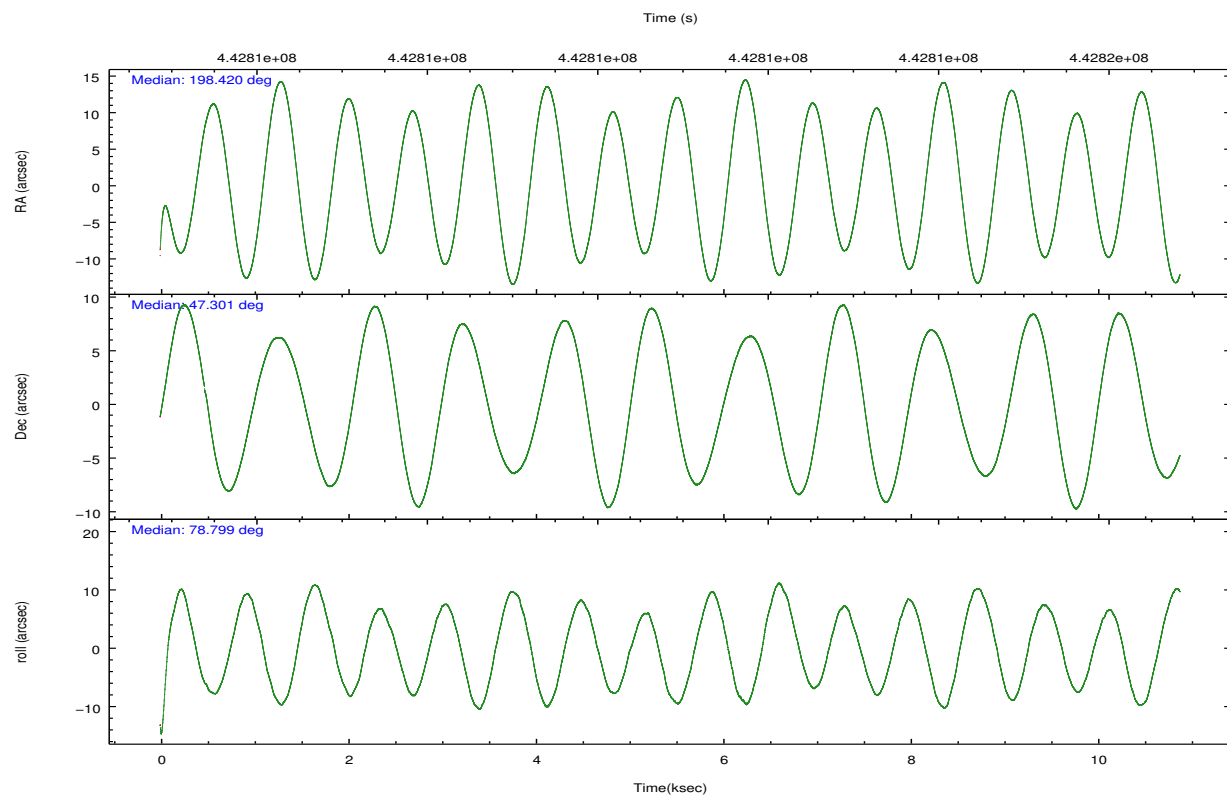
	ccd 2	ccd 3	ccd 5	ccd 6	ccd 7	ccd 8		ccd 2	ccd 3	ccd 5	ccd 6	ccd 7	ccd 8
level 1 events	65485	59687	103419	67023	81437	85160	grade 0 events	2464	2311	6129	3670	3179	6355
rejected events	58417	53187	51931	58070	45480	62648		3%	3%	5%	5%	3%	7%
rejected %	89%	89%	50%	86%	55%	73%	grade 1 events	45	26	172	64	122	54
								0%	0%	0%	0%	0%	0%
							grade 2 events	1700	1379	16036	1920	7417	5489
								2%	2%	15%	2%	9%	6%
							grade 3 events	750	726	1811	851	3192	2271
								1%	1%	1%	1%	3%	2%
							grade 4 events	735	711	1647	763	3153	2111
								1%	1%	1%	1%	3%	2%
							grade 5 events	2776	2922	7766	3004	8556	4270
								4%	4%	7%	4%	10%	5%
							grade 6 events	1423	1376	25899	1756	19041	6294
								2%	2%	25%	2%	23%	7%
							grade 7 events	55592	50236	43959	54995	36777	58316
								84%	84%	42%	82%	45%	68%

2.2 Compared Parameters

Parameter	Planned	Actual	Parameter	Planned	Actual
Instrument	ACIS	ACIS	Obspar format version number	7	7
Detector	ACIS-235678	ACIS-235678	Obspar file type	PREDICTED	ACTUAL
Grating	NONE	NONE	Obspar update status	NONE	UPDATED
Data mode	FAINT	FAINT	CCD I0 on	N	N
Observation mode	POINTING	POINTING	CCD I1 on	N	N
[deg] Pointing RA	198.433199	198.4196292814725	CCD I2 on	O1	Y
[deg] Pointing Dec	47.275500	47.30127700782059	CCD I3 on	Y	Y
[deg] Pointing Roll	78.635600	78.80218027938909	CCD S0 on	N	N
[mm] SIM focus pos	-0.684267	-0.6828225247311905	CCD S1 on	Y	Y
[mm] SIM defocus	0	0.001444936568705701	CCD S2 on	Y	Y
[mm] SIM translation stage pos	-190.132523	-190.1400660498719	CCD S3 on	Y	Y
[mm] SIM translation stage offset	0	0.00754346686406393	CCD S4 on	Y	Y
[s] Observation start time (MET)	442806274.184000	442804573.18837	CCD S5 on	N	N
Observation start date	2012-01-13T01:43:28	2012-01-13T01:16:13	Number of optional ACIS chips dropped	0	0
[s] Observation end time (MET)	442816274.184000	442816935.20152	On-chip summing requested	N	N
Observation end date	2012-01-13T04:30:08	2012-01-13T04:42:15	Subarray requested	NONE	NONE
Read mode	TIMED	TIMED	Alternating exposures requested	N	N
			[s] Primary exposure time	0.000000	3.2

2.3 Aspect



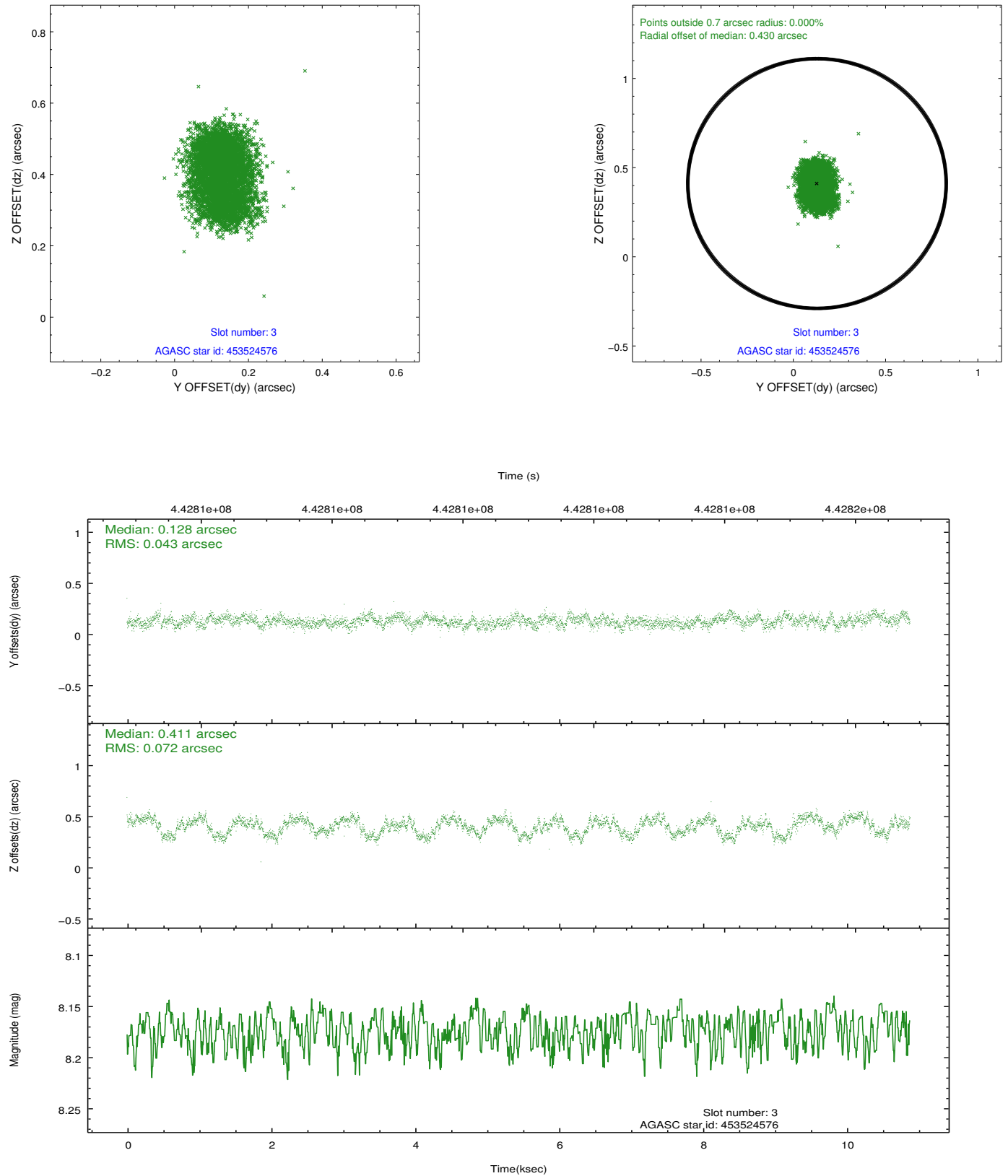


Slot Statistics

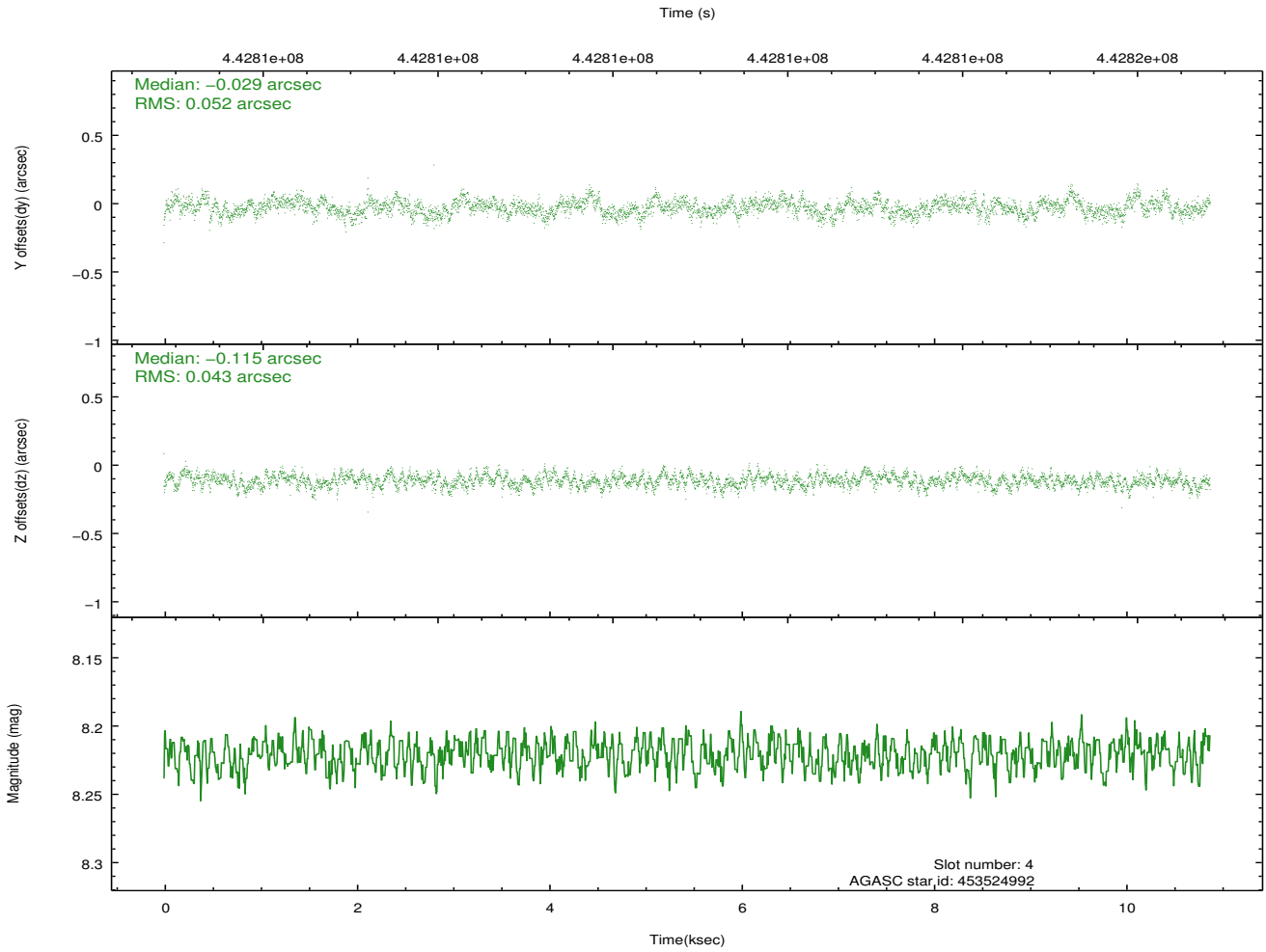
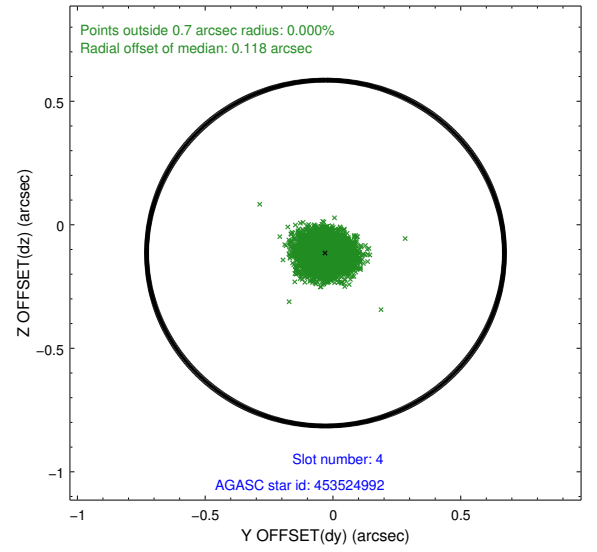
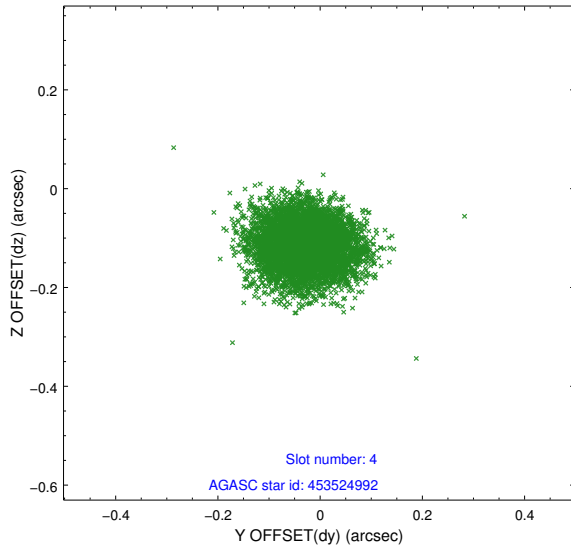
slot	status	id	mag	n_pts	med_dy	med_dz	dr1	dr2	ra	dec	mean_y	mean_z
0	FID	ACIS-S-2	6.84	2655	-0.111	-0.003	0.008	0.013	0.000000	0.000000	-768.31	-1736.73
1	FID	ACIS-S-4	6.93	2655	0.231	0.055	0.007	0.021	0.000000	0.000000	2145.09	171.31
2	FID	ACIS-S-5	6.96	2655	-0.151	-0.042	0.008	0.024	0.000000	0.000000	-1820.58	165.43
3	GUIDE	453524576	8.17	5308	0.128	0.411	0.091	0.141	199.201887	46.735745	-1521.73	-2240.26
4	GUIDE	453524992	8.22	5308	-0.029	-0.115	0.072	0.115	197.874605	46.952147	-1407.10	1116.68
5	GUIDE	453526776	9.16	5308	0.254	-0.200	0.117	0.185	198.324802	47.032178	-911.03	88.26
6	GUIDE	453527904	9.26	5299	-0.144	-0.212	0.113	0.177	198.045612	47.556000	805.76	1122.99
7	GUIDE	453527400	9.09	5305	-0.210	0.123	0.100	0.163	199.255489	47.848221	2423.43	-1538.97

2.4 Star Slots

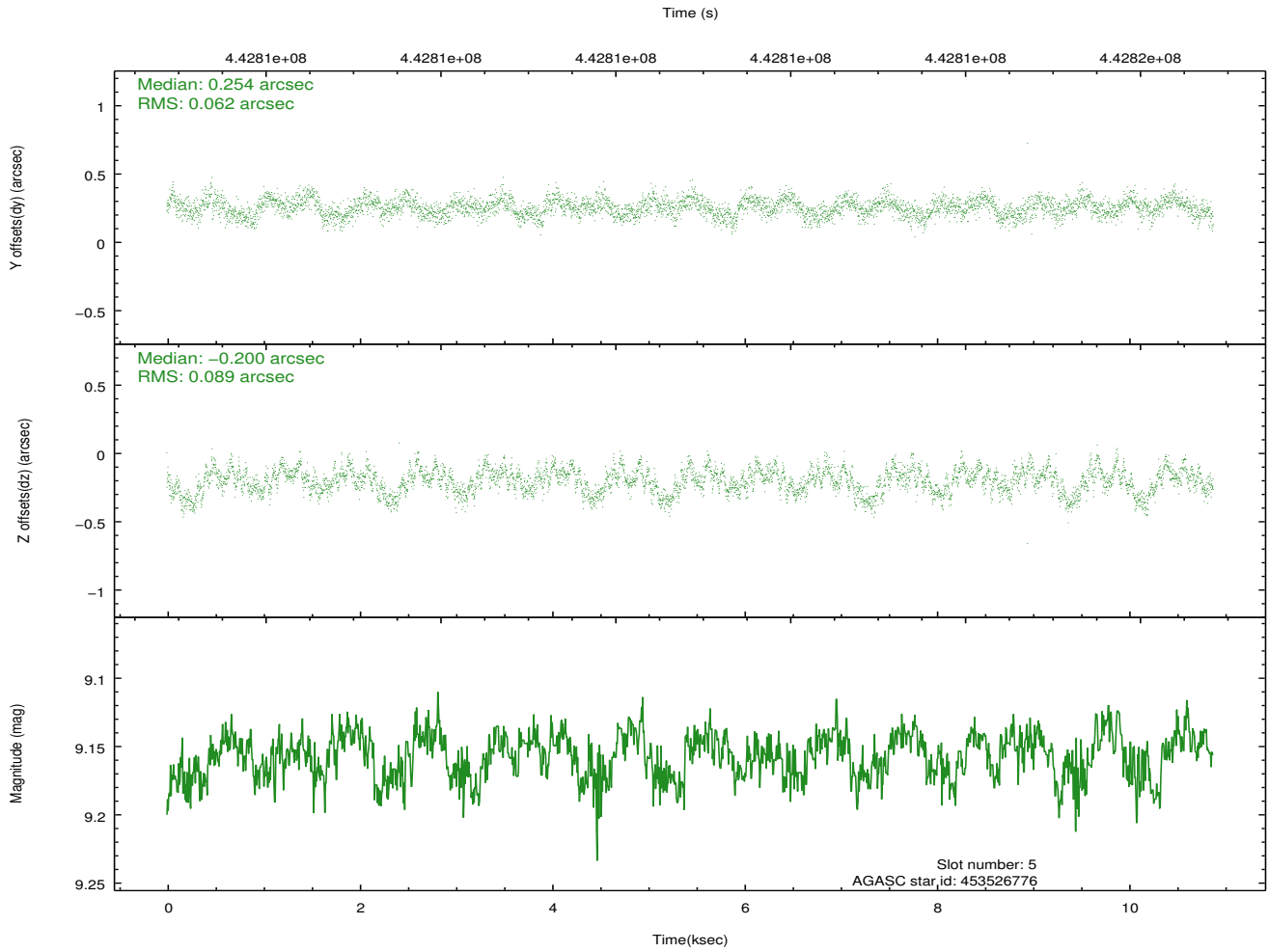
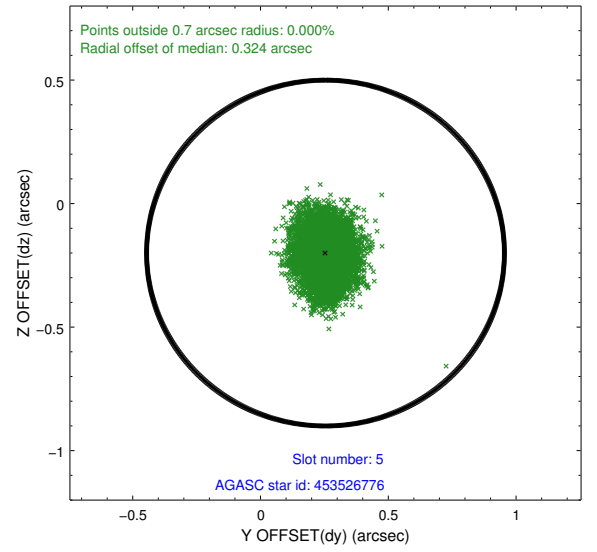
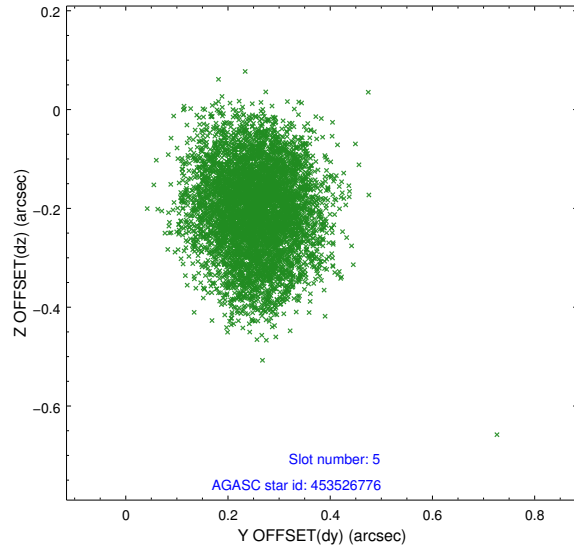
2.4.1 Slot 3



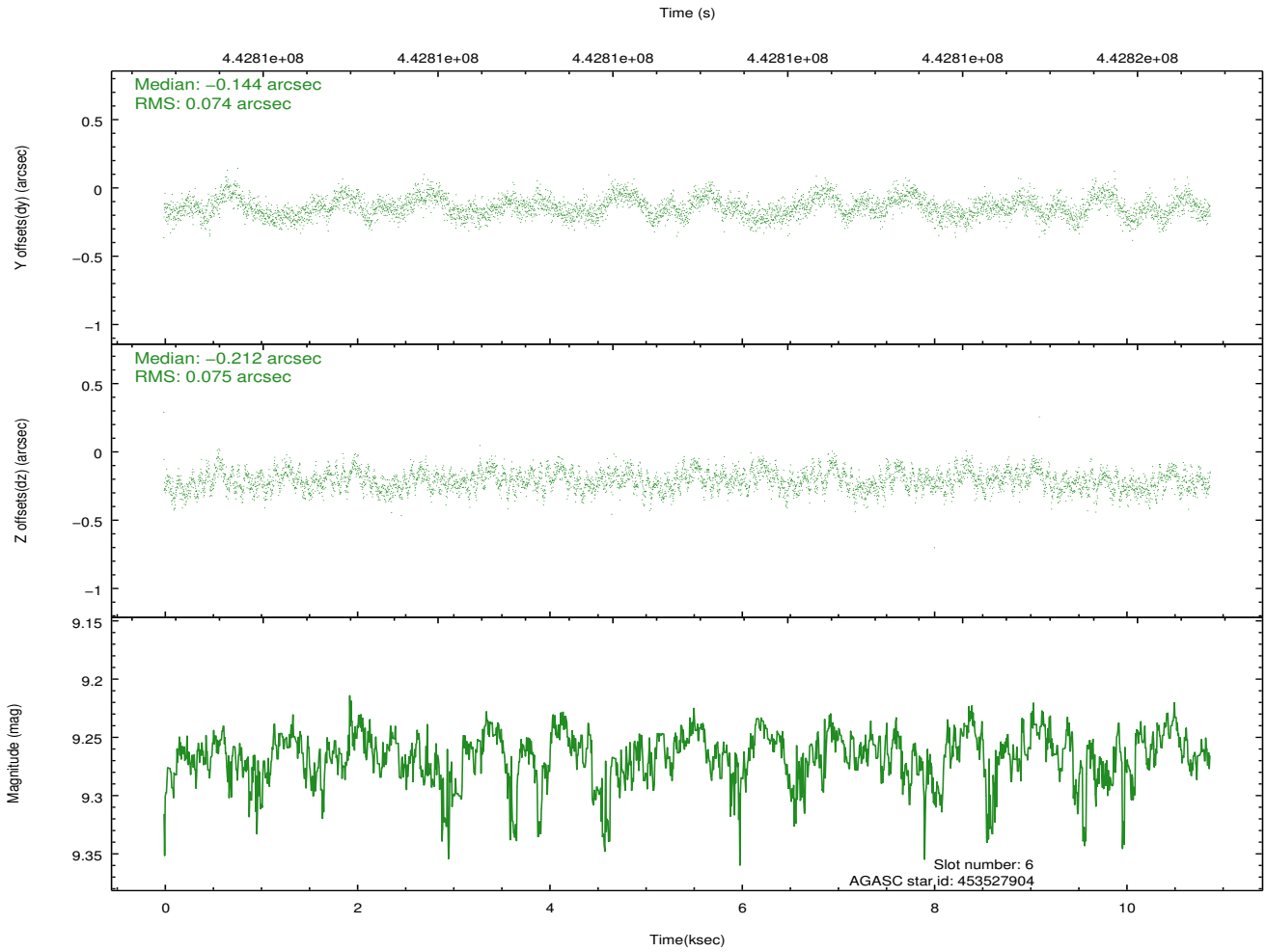
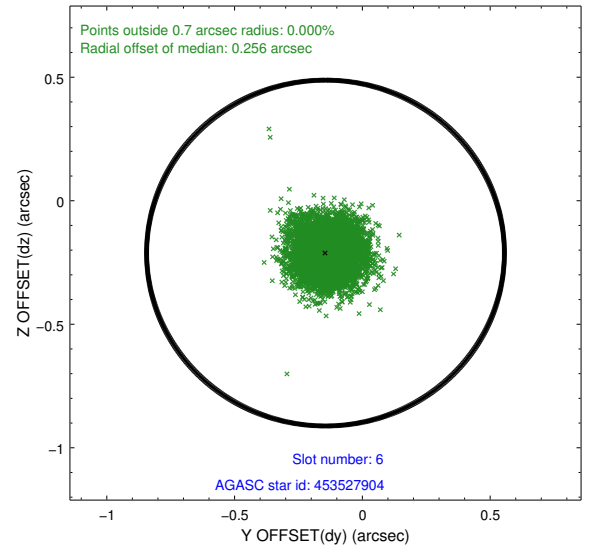
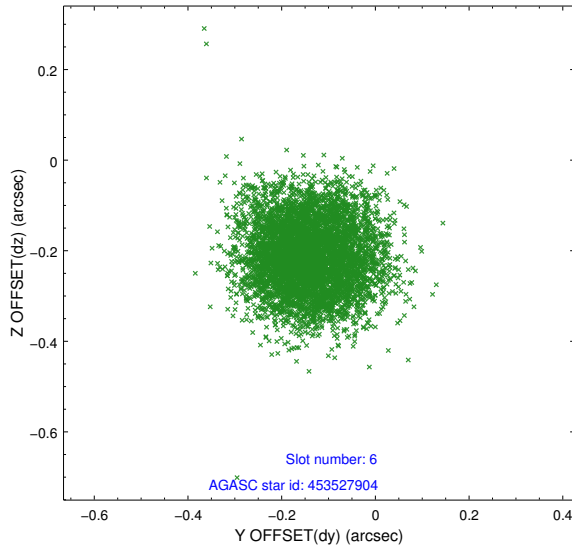
2.4.2 Slot 4



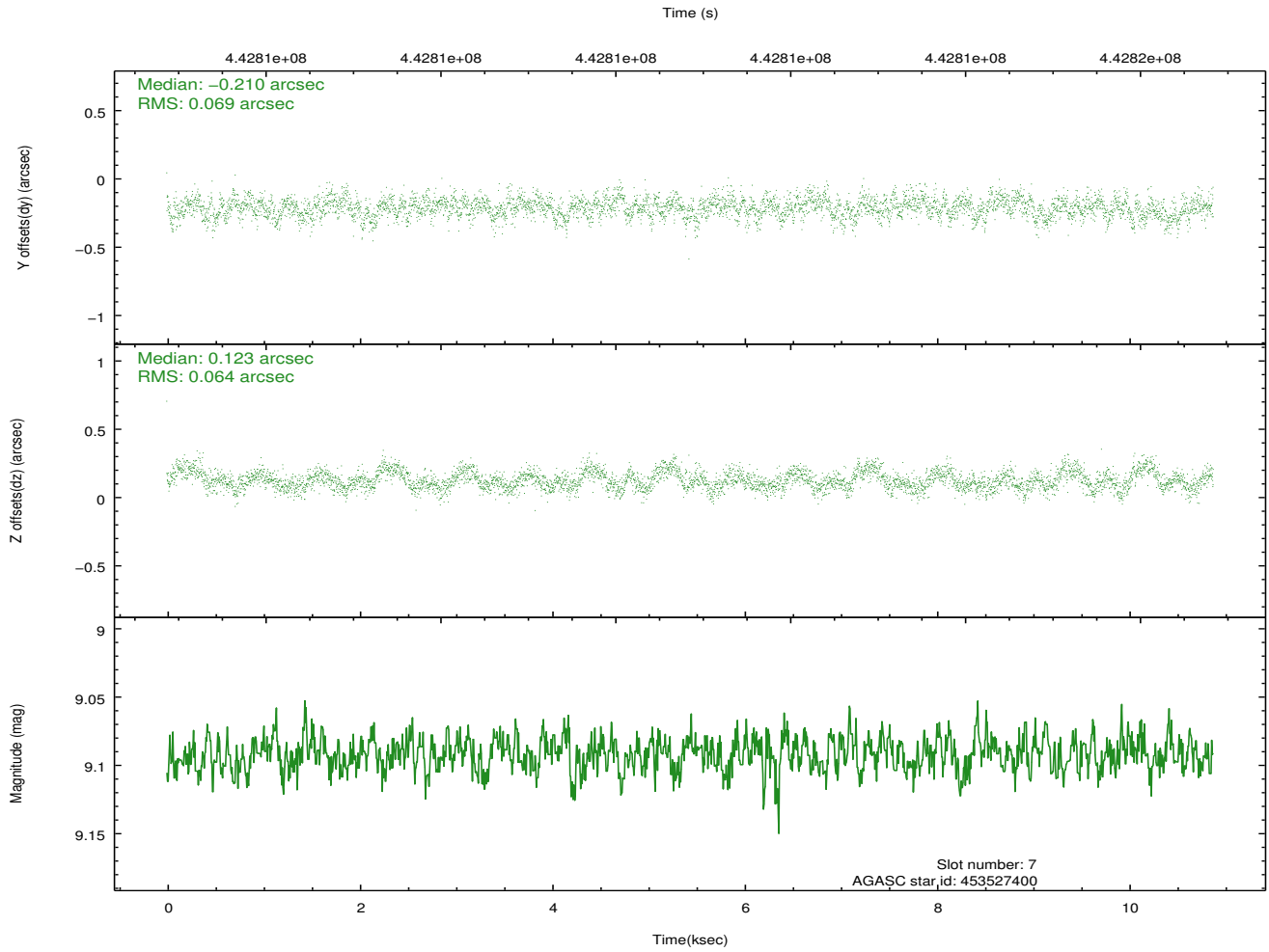
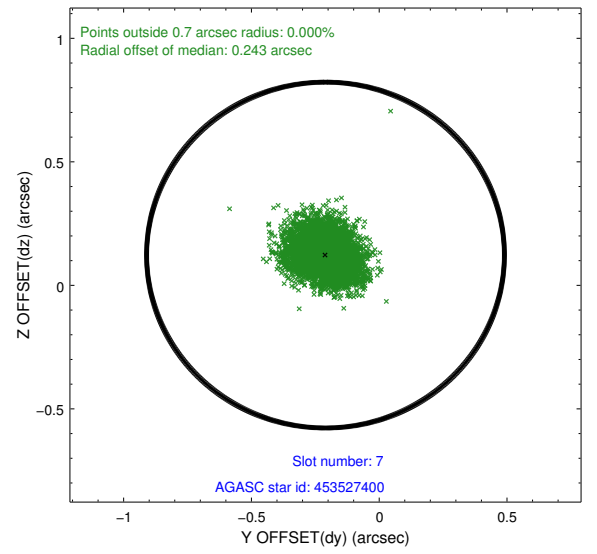
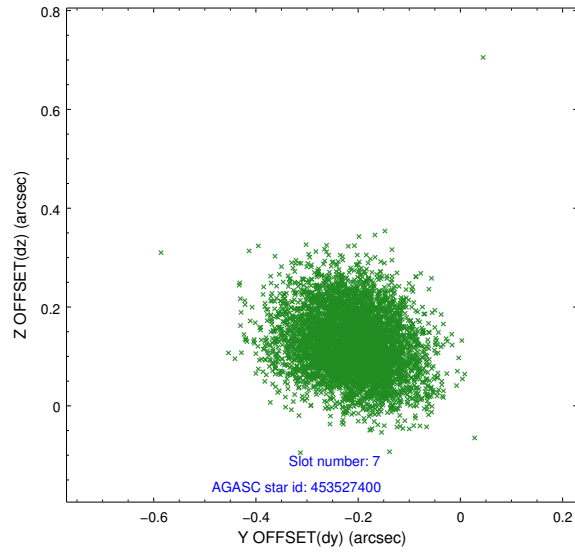
2.4.3 Slot 5



2.4.4 Slot 6

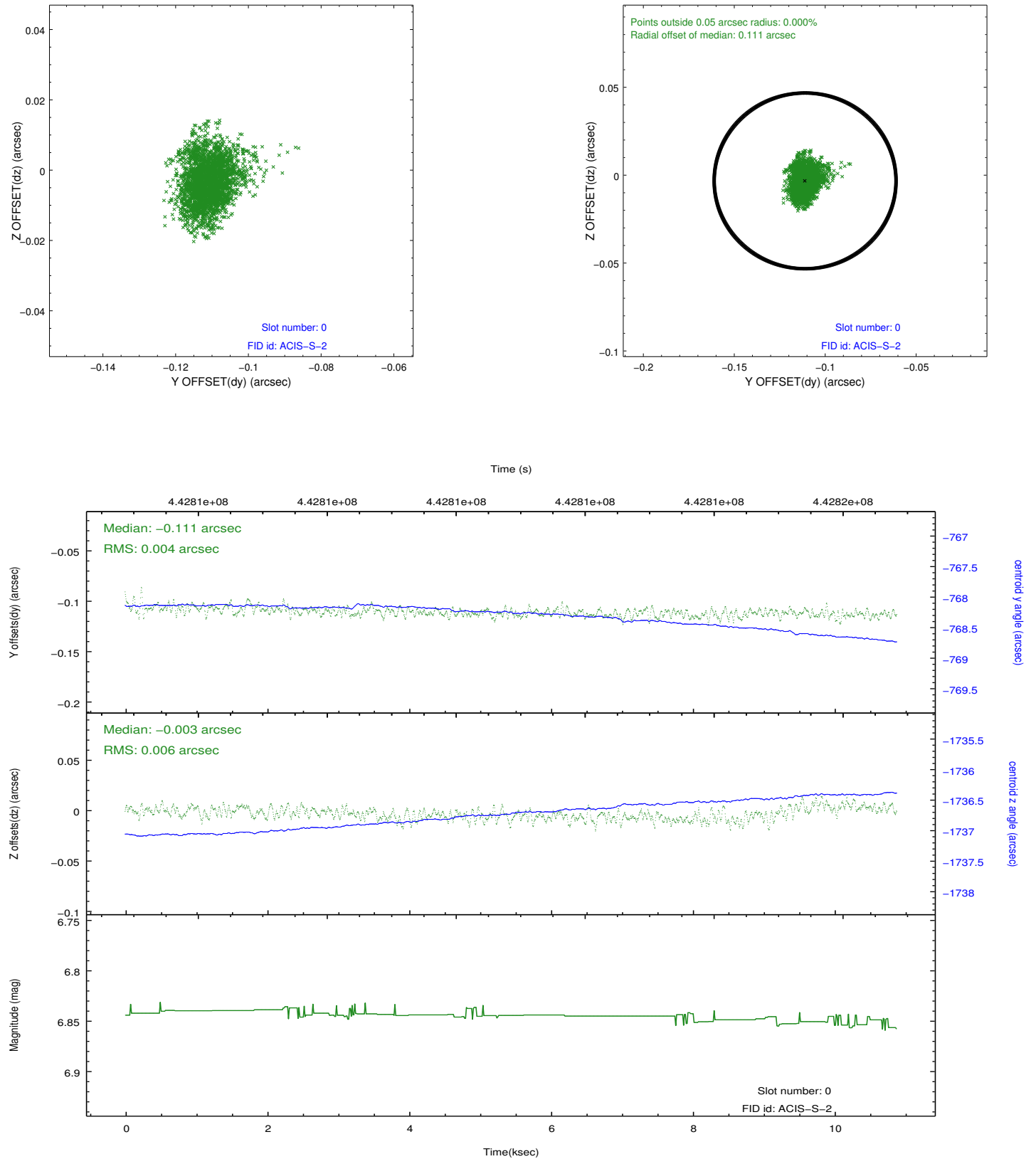


2.4.5 Slot 7

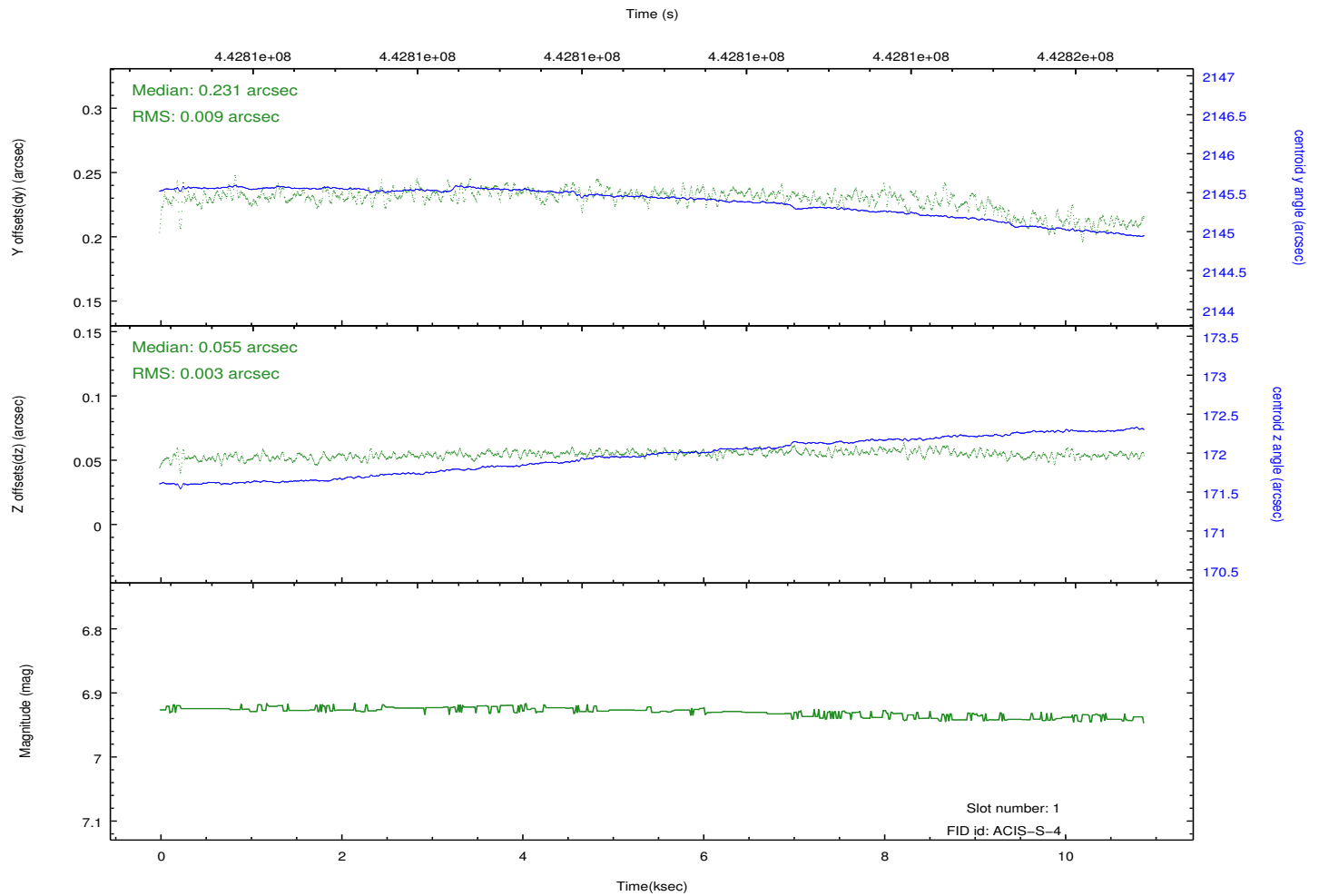
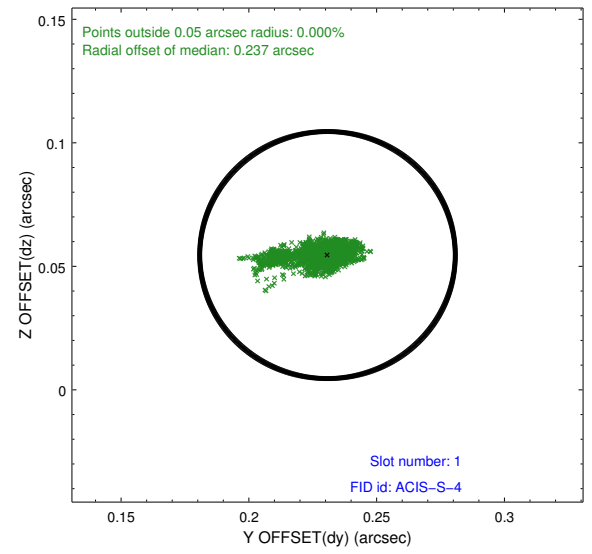
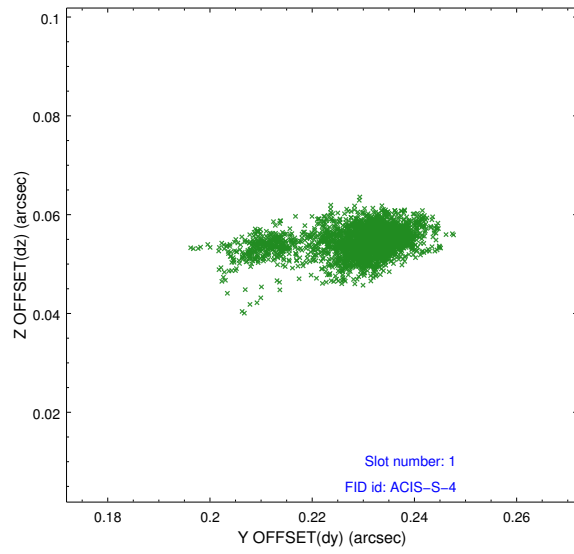


2.5 FID Slots

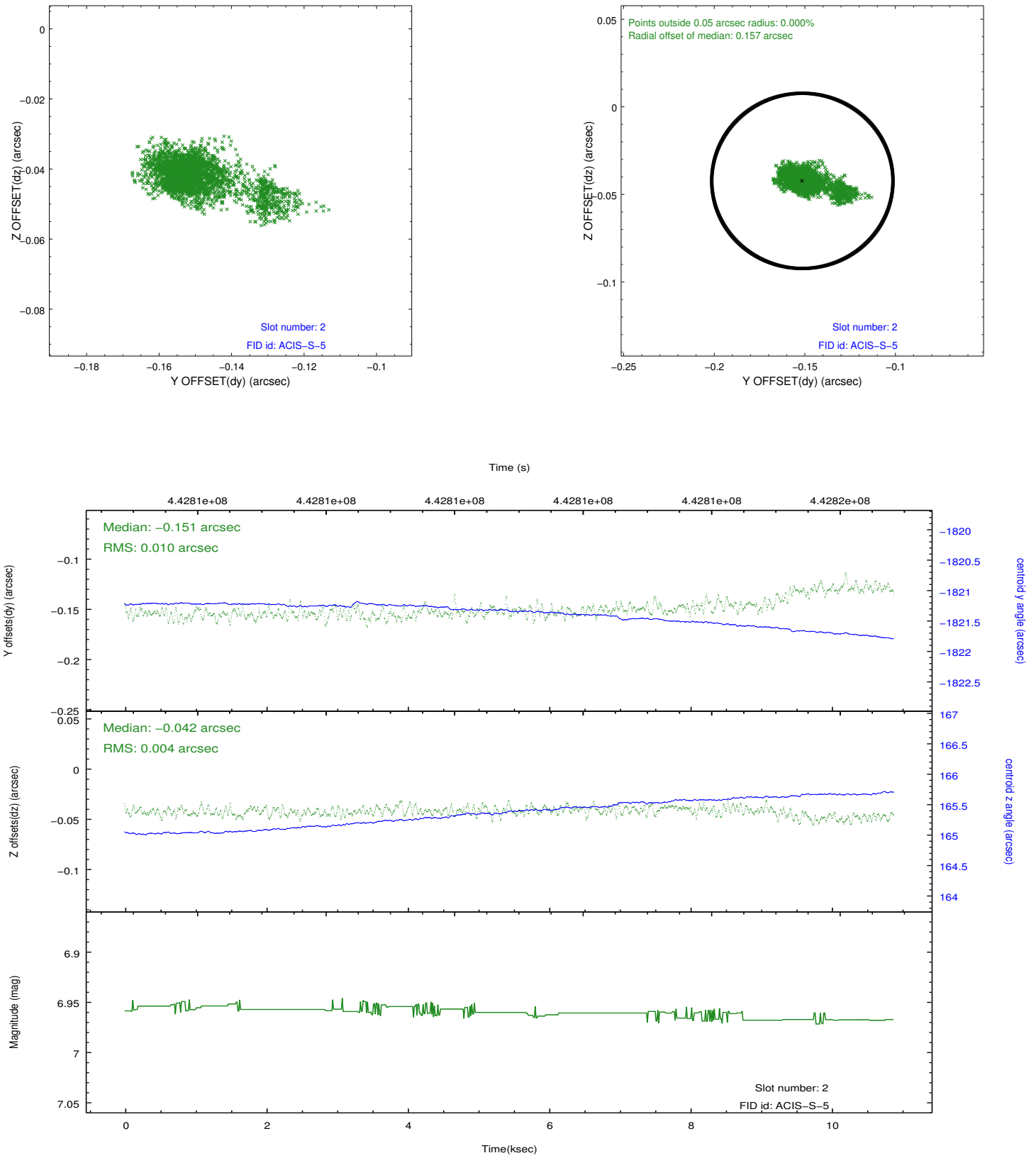
2.5.1 Slot 0



2.5.2 Slot 1



2.5.3 Slot 2



A Summary

A.1 Status

V&V Scientist	Jen Lauer
V&V Date (YYYY-MM-DD)	2012.01.13
V&V Edition	1
V&V Disposition and Status	OK
V&V Charge Time	9.9610850145817

A.2 Comments

Window constraint met.