

V&V Reference Report

L2 ASCDS Version : 8.4.5

Observation 13806 - L2 Version 3
Chandra X-Ray Center

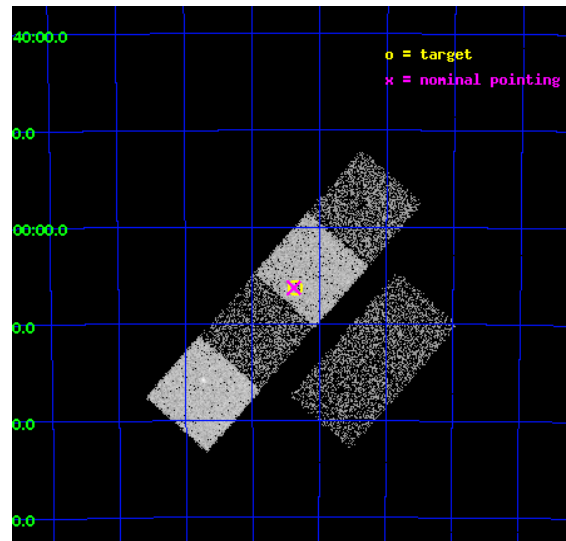
L2 Processing Date : Jun 6 2012

Contents

1	Front	2
2	OBI	3
2.1	OBI	3
2.1.1	Images	3
2.1.2	Bias	3
2.1.3	Parameters	4
2.1.4	Events	4
2.2	Compared Parameters	5
2.3	Aspect	6
2.4	Star Slots	9
2.4.1	Slot 3	9
2.4.2	Slot 4	10
2.4.3	Slot 5	11
2.4.4	Slot 6	12
2.4.5	Slot 7	13
2.5	FID Slots	14
2.5.1	Slot 0	14
2.5.2	Slot 1	15
2.5.3	Slot 2	16
A	Summary	17
A.1	Status	17
A.2	Comments	17

1 Front

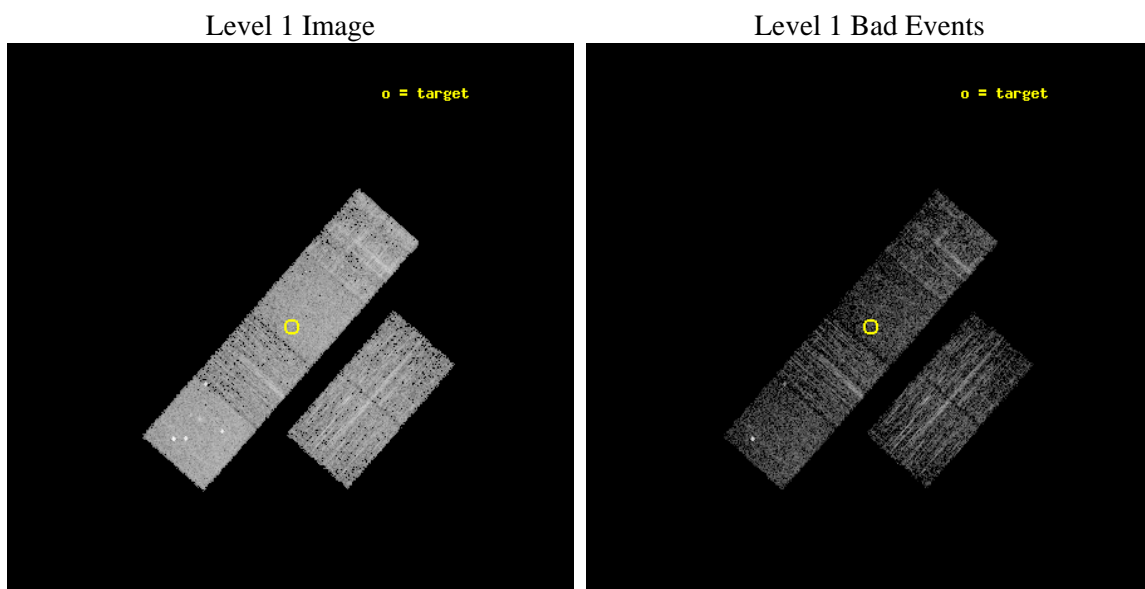
seq_num	501638	Sequence number
obs_id	13806	Observation id
title	A CASE OF MISTAKEN IDENTITY: DISRUPTED RECYCLED PULSARS OR ORPHANED ANTI-MAGNETARS?	Proposal title
observer	Prof. Dr. Bruce Allen	Principal investigator
object	PSR J1355-6206	Source name
dtcycle	0	
cycle	P	events from which exps? Prim/Second/Both
ra_targ	208.83875	Observer's specified target RA [deg]
dec_targ	-62.105583	Observer's specified target Dec [deg]
ra_nom	208.84486595598	Nominal RA [deg]
dec_nom	-62.105015728065	Nominal Dec [deg]
roll_nom	311.3774880844	Nominal Roll [deg]
revision	3	Processing version of data
ontime	3464.5008907914	Sum of GTIs [s]
livetime	3420.6312944402	Livetime [s]
ontime2	3464.5419307947	Sum of GTIs [s]
ontime3	3464.3777707815	Sum of GTIs [s]
ontime5	3464.4598507881	Sum of GTIs [s]
ontime6	3464.4188107848	Sum of GTIs [s]
ontime7	3464.5008907914	Sum of GTIs [s]
ontime8	3464.3367307782	Sum of GTIs [s]
l2events	36498	Number of level 2 events



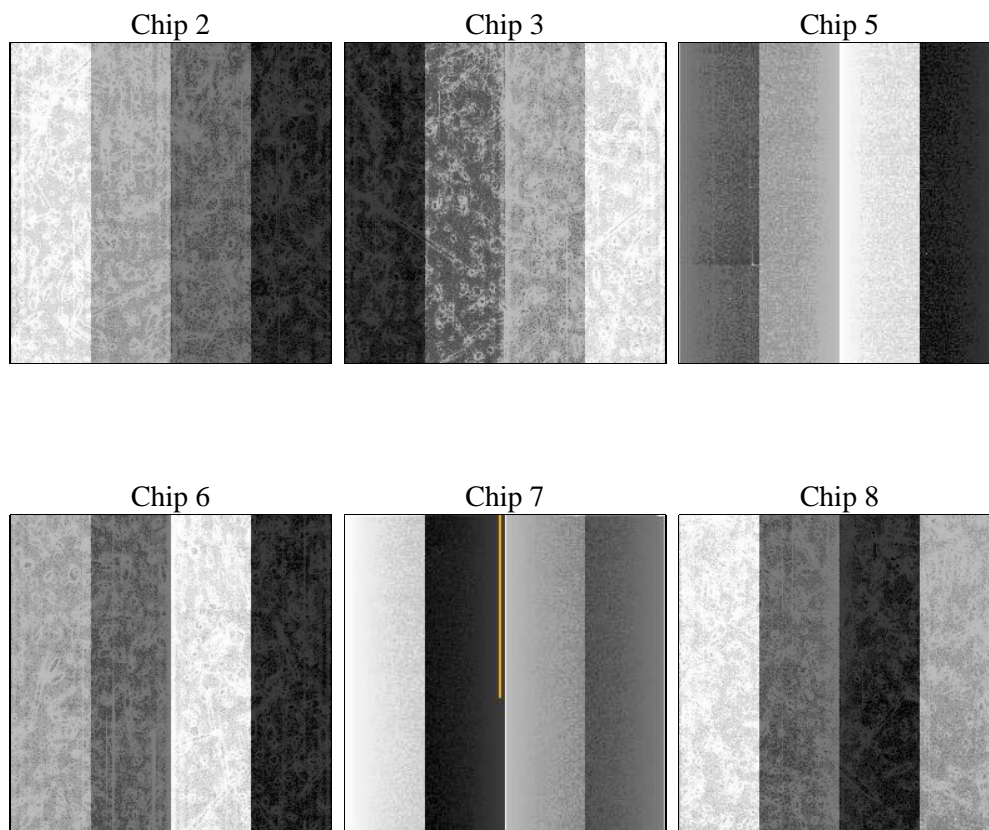
2 OBI

2.1 OBI

2.1.1 Images



2.1.2 Bias



2.1.3 Parameters

obi_num	1	Obi number	sched_exp_time	3500.000000	[s] Scheduled observation exposure time
ascdsver	8.4.5	Processing system revision	ontime	3464.5008907914	Sum of GTIs [s]
caldsver	4.4.10	 	ontime2	3464.5419307947	Sum of GTIs [s]
date	2012-06-06T22:00:01	Date and time of file creation	ontime3	3464.3777707815	Sum of GTIs [s]
revision	3	Processing version of data	ontime5	3464.4598507881	Sum of GTIs [s]
			ontime6	3464.4188107848	Sum of GTIs [s]
			ontime7	3464.5008907914	Sum of GTIs [s]
			ontime8	3464.3367307782	Sum of GTIs [s]
			l1events	158096	Number of level 1 events

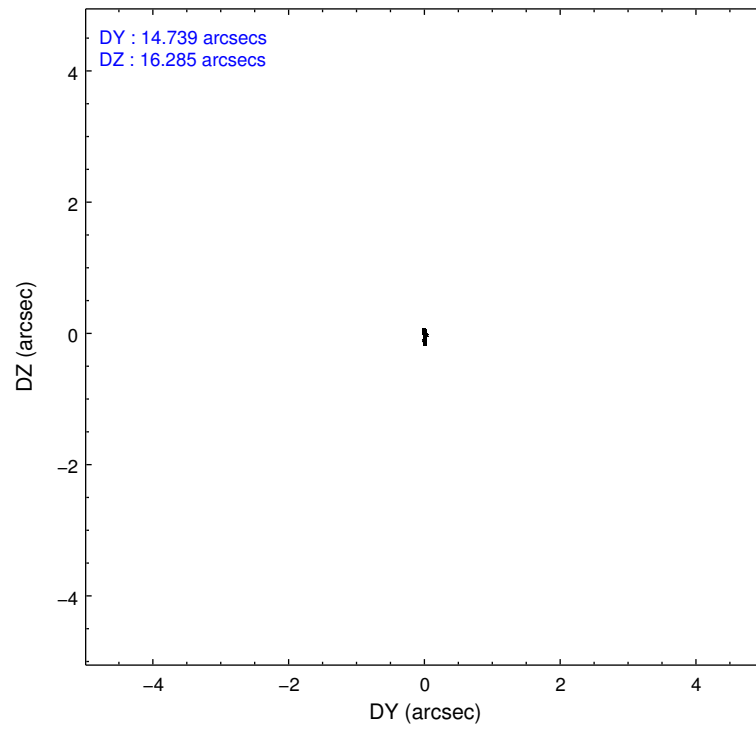
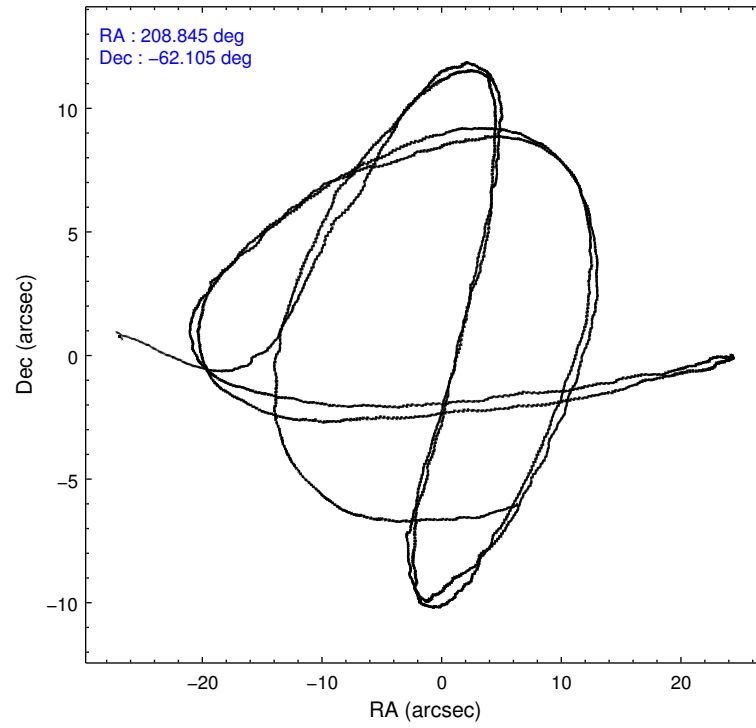
2.1.4 Events

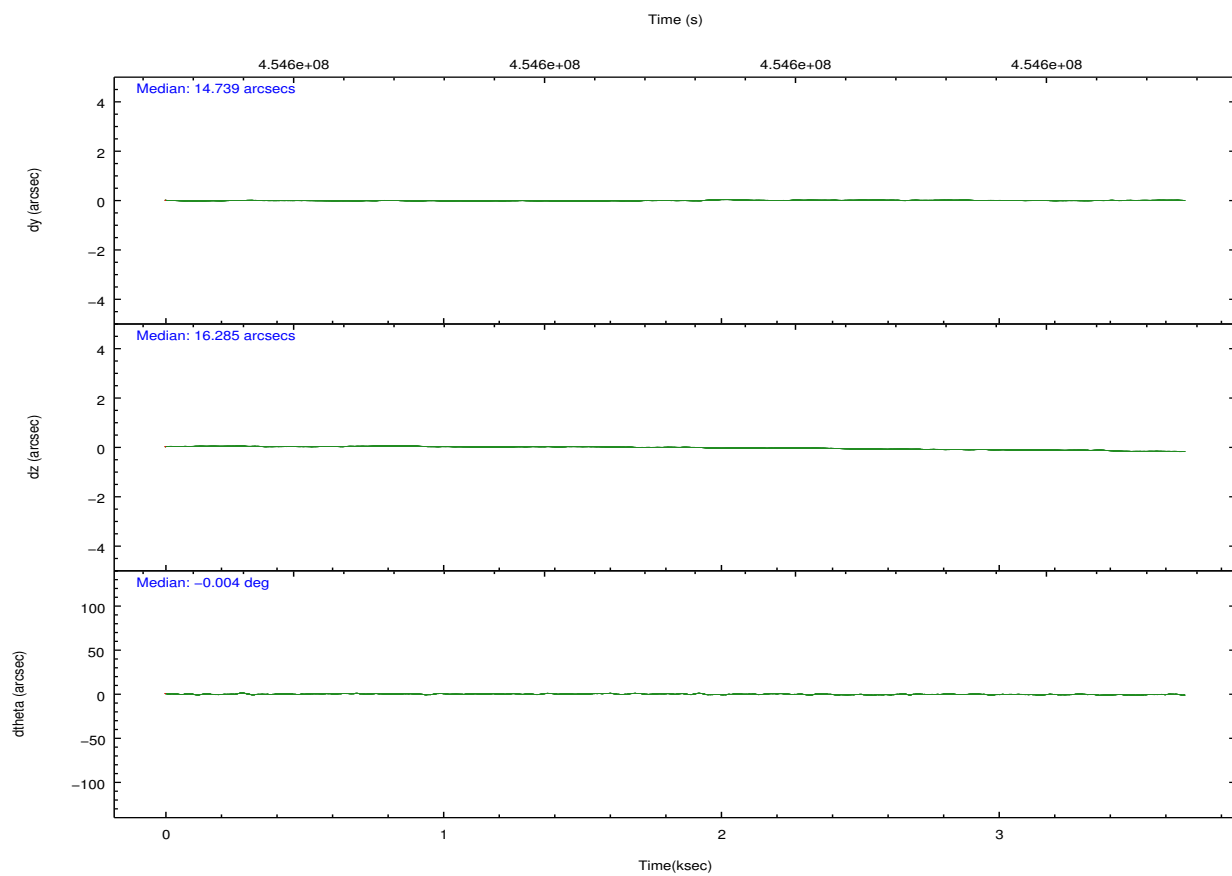
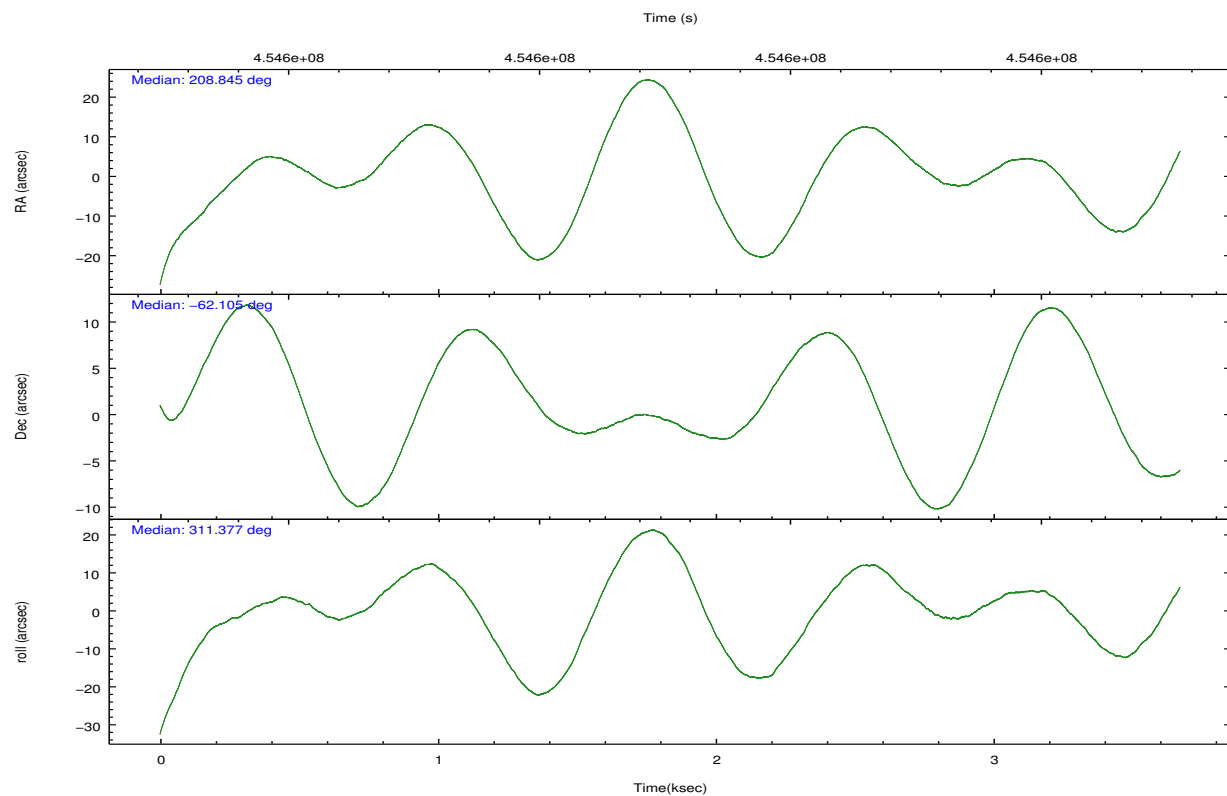
	ccd 2	ccd 3	ccd 5	ccd 6	ccd 7	ccd 8		ccd 2	ccd 3	ccd 5	ccd 6	ccd 7	ccd 8
level 1 events	22802	19974	35672	22093	27269	30286	grade 0 events	926	882	2717	917	1106	3132
rejected events	20281	17663	17669	19537	15068	20385		4%	4%	7%	4%	4%	10%
rejected %	88%	88%	49%	88%	55%	67%	grade 1 events	13	14	122	7	36	27
								0%	0%	0%	0%	0%	0%
							grade 2 events	646	478	5318	614	2412	2007
								2%	2%	14%	2%	8%	6%
							grade 3 events	223	228	670	255	1130	1341
								0%	1%	1%	1%	4%	4%
							grade 4 events	261	230	565	247	1079	1269
								1%	1%	1%	1%	3%	4%
							grade 5 events	899	994	2685	985	2802	1528
								3%	4%	7%	4%	10%	5%
							grade 6 events	468	496	8745	523	6491	2156
								2%	2%	24%	2%	23%	7%
							grade 7 events	19366	16652	14850	18545	12213	18826
								84%	83%	41%	83%	44%	62%

2.2 Compared Parameters

Parameter	Planned	Actual	Parameter	Planned	Actual
Instrument	ACIS	ACIS	Obspar format version number	7	7
Detector	ACIS-235678	ACIS-235678	Obspar file type	PREDICTED	ACTUAL
Grating	NONE	NONE	Obspar update status	NONE	UPDATED
Data mode	VFAINT	VFAINT	CCD I0 on	N	N
Observation mode	POINTING	POINTING	CCD I1 on	N	N
[deg] Pointing RA	208.789531	208.8448659559771	CCD I2 on	O1	Y
[deg] Pointing Dec	-62.096736	-62.10501572806544	CCD I3 on	O2	Y
[deg] Pointing Roll	311.171961	311.3774880844049	CCD S0 on	N	N
[mm] SIM focus pos	-0.684267	-0.6828225247311905	CCD S1 on	Y	Y
[mm] SIM defocus	0	0.001444936568705701	CCD S2 on	Y	Y
[mm] SIM translation stage pos	-190.132523	-190.1425803651734	CCD S3 on	Y	Y
[mm] SIM translation stage offset	0	0.01005778216563158	CCD S4 on	Y	Y
[s] Observation start time (MET)	454595848.184000	454594774.68837	CCD S5 on	N	N
Observation start date	2012-05-28T12:36:22	2012-05-28T12:19:34	Number of optional ACIS chips dropped	0	0
[s] Observation end time (MET)	454599348.184000	454600437.81367	On-chip summing requested	N	N
Observation end date	2012-05-28T13:34:42	2012-05-28T13:53:57	Subarray requested	NONE	NONE
Read mode	TIMED	TIMED	Alternating exposures requested	N	N
			[s] Primary exposure time	0.000000	3.2

2.3 Aspect



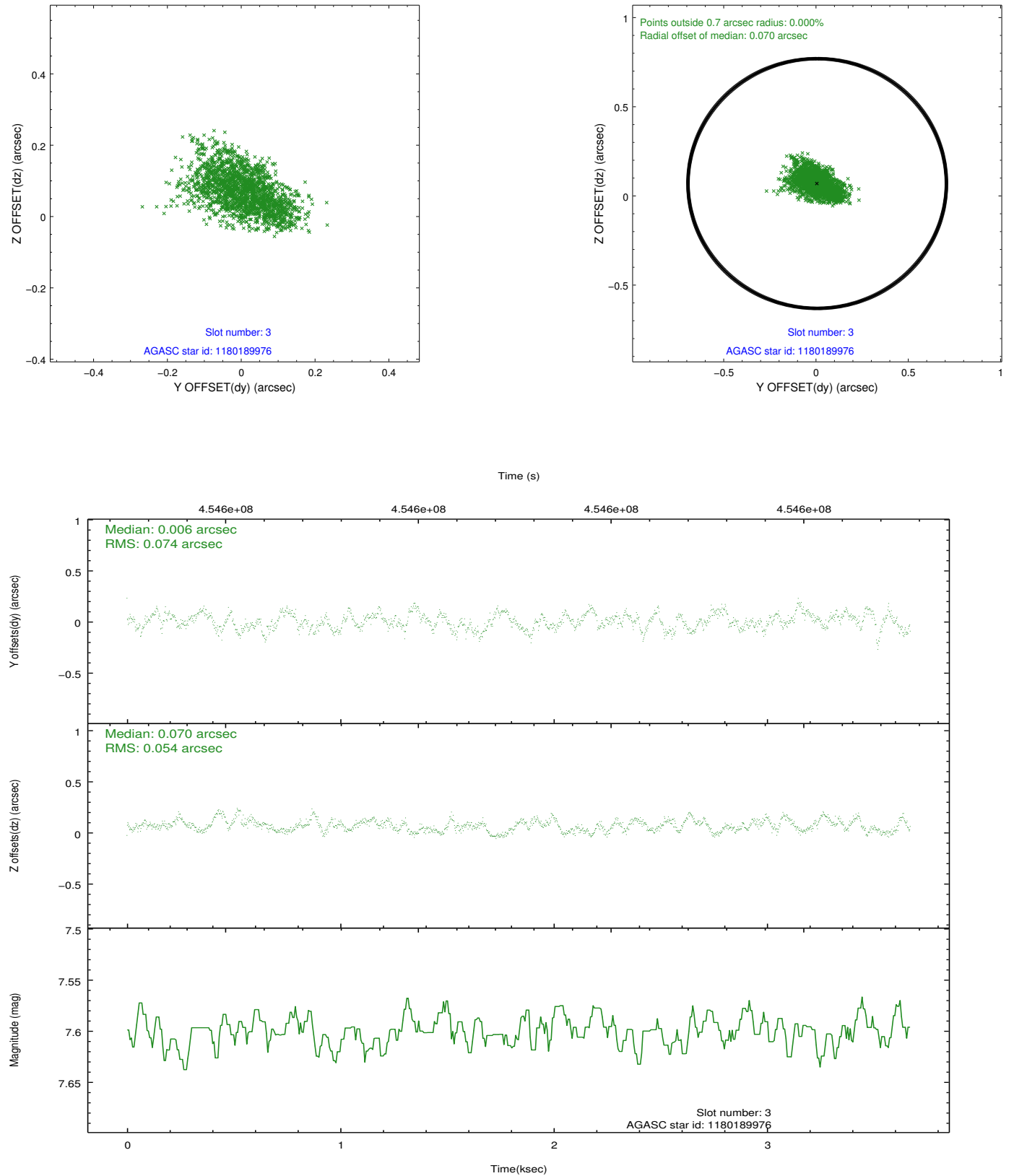


Slot Statistics

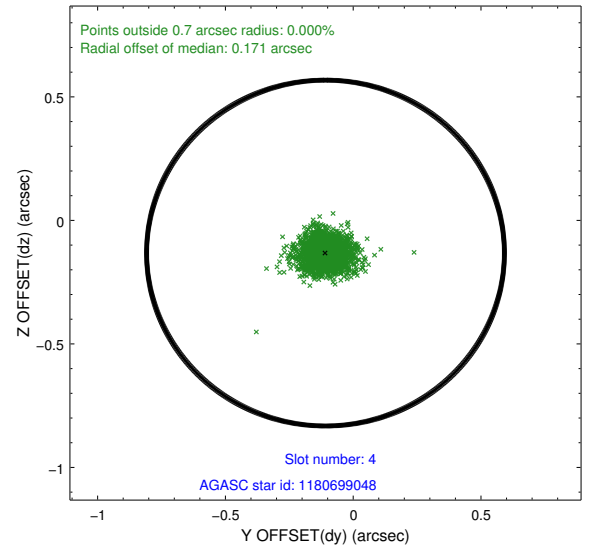
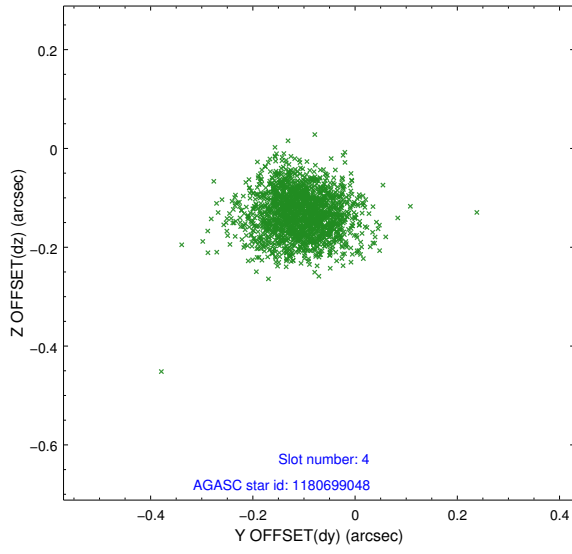
slot	status	id	mag	n_pts	med_dy	med_dz	dr1	dr2	ra	dec	mean_y	mean_z
0	FID	ACIS-S-2	6.92	896	-0.103	-0.009	0.007	0.010	0.000000	0.000000	-767.82	-1737.62
1	FID	ACIS-S-4	7.00	896	0.239	0.052	0.006	0.011	0.000000	0.000000	2145.03	169.11
2	FID	ACIS-S-5	7.03	896	-0.168	-0.034	0.006	0.011	0.000000	0.000000	-1818.52	164.68
3	GUIDE	1180189976	7.60	1792	0.006	0.070	0.099	0.159	208.680558	-61.334489	-2188.75	1664.96
4	GUIDE	1180699048	8.41	1792	-0.108	-0.132	0.073	0.123	209.865558	-61.978696	888.87	1640.80
5	GUIDE	1180190024	8.20	1792	0.017	0.057	0.108	0.193	208.708849	-61.300231	-2249.19	1783.60
6	GUIDE	1180708520	9.10	1788	0.000	-0.189	0.101	0.161	209.274015	-62.249252	949.68	249.05
7	GUIDE	1180718808	9.24	1787	0.091	0.174	0.136	0.203	209.362502	-62.678146	2203.37	-667.71

2.4 Star Slots

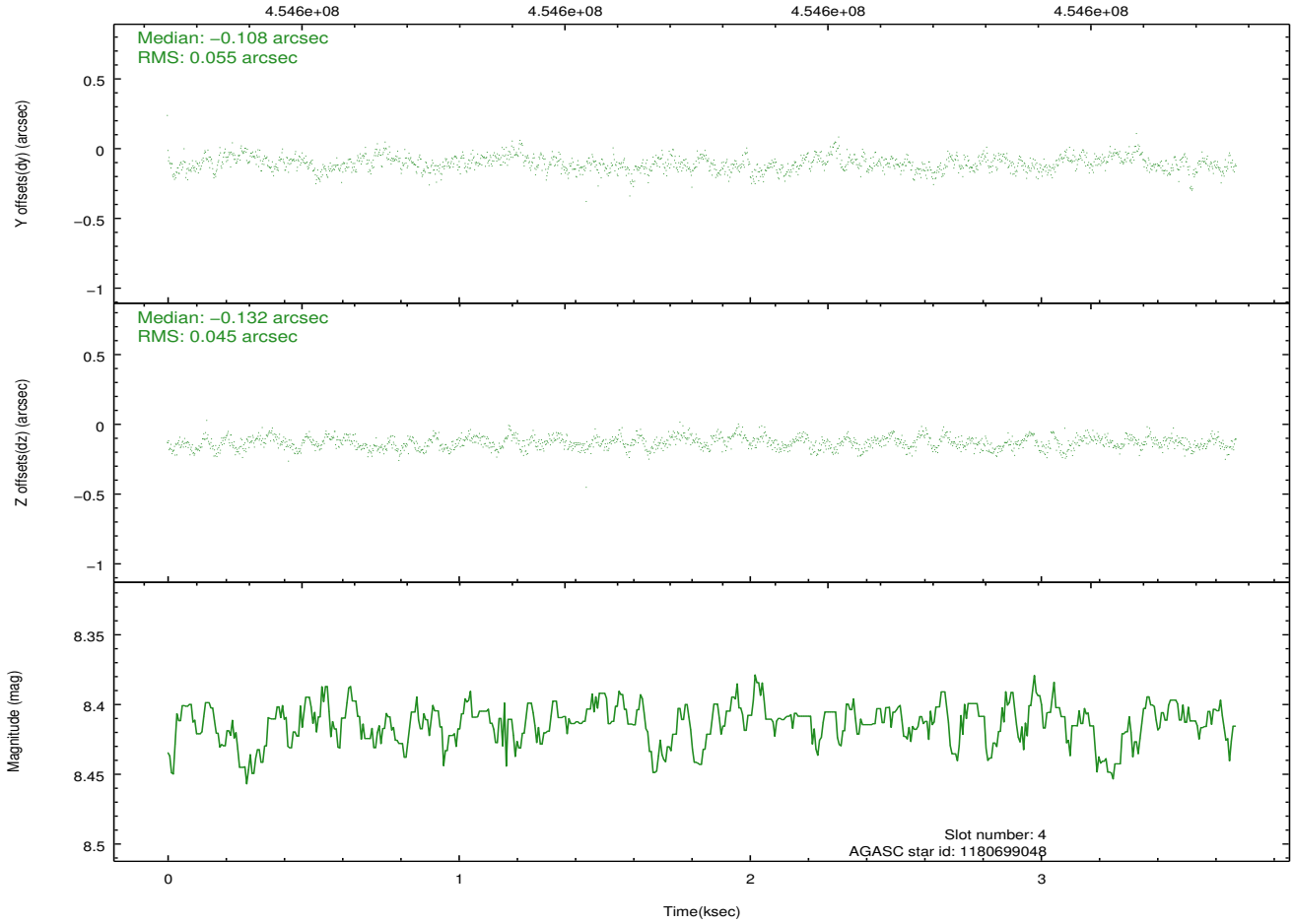
2.4.1 Slot 3



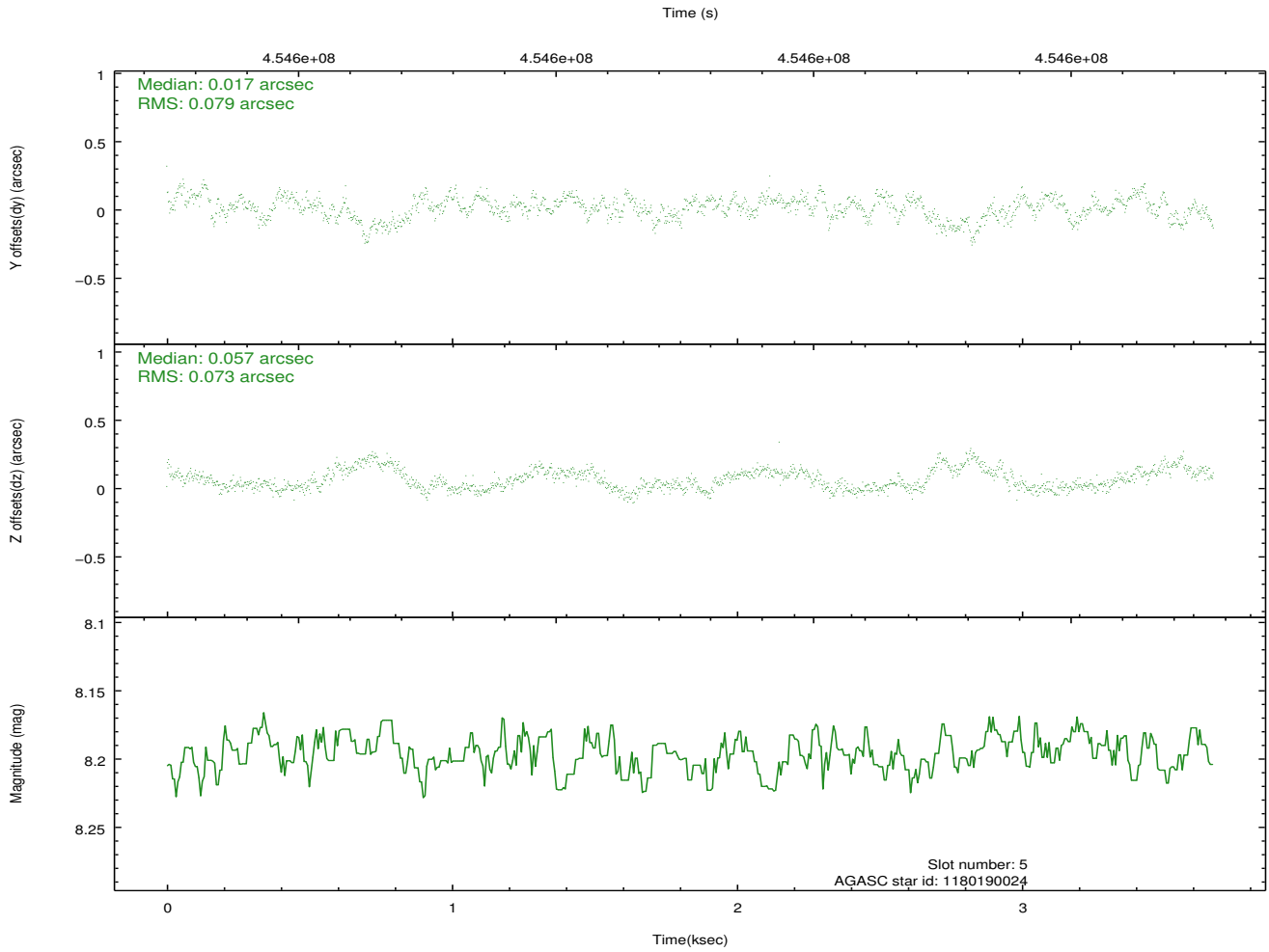
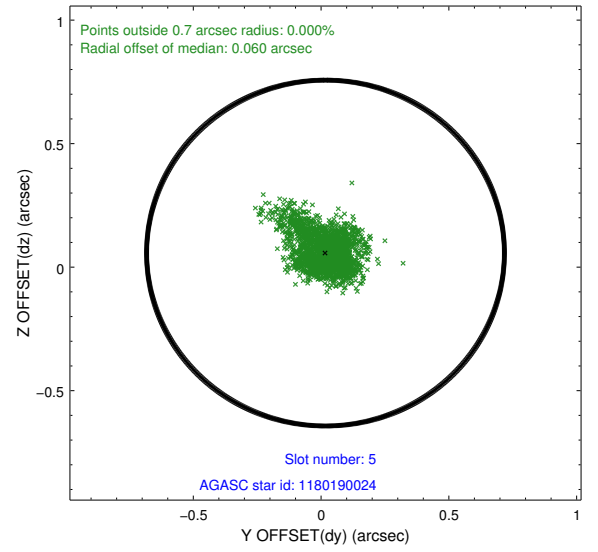
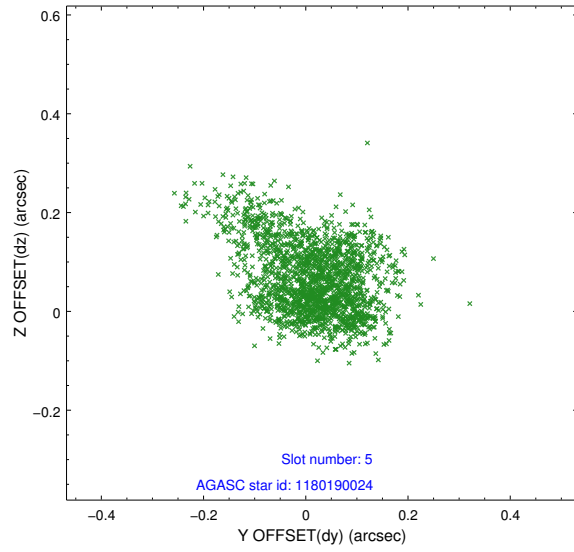
2.4.2 Slot 4



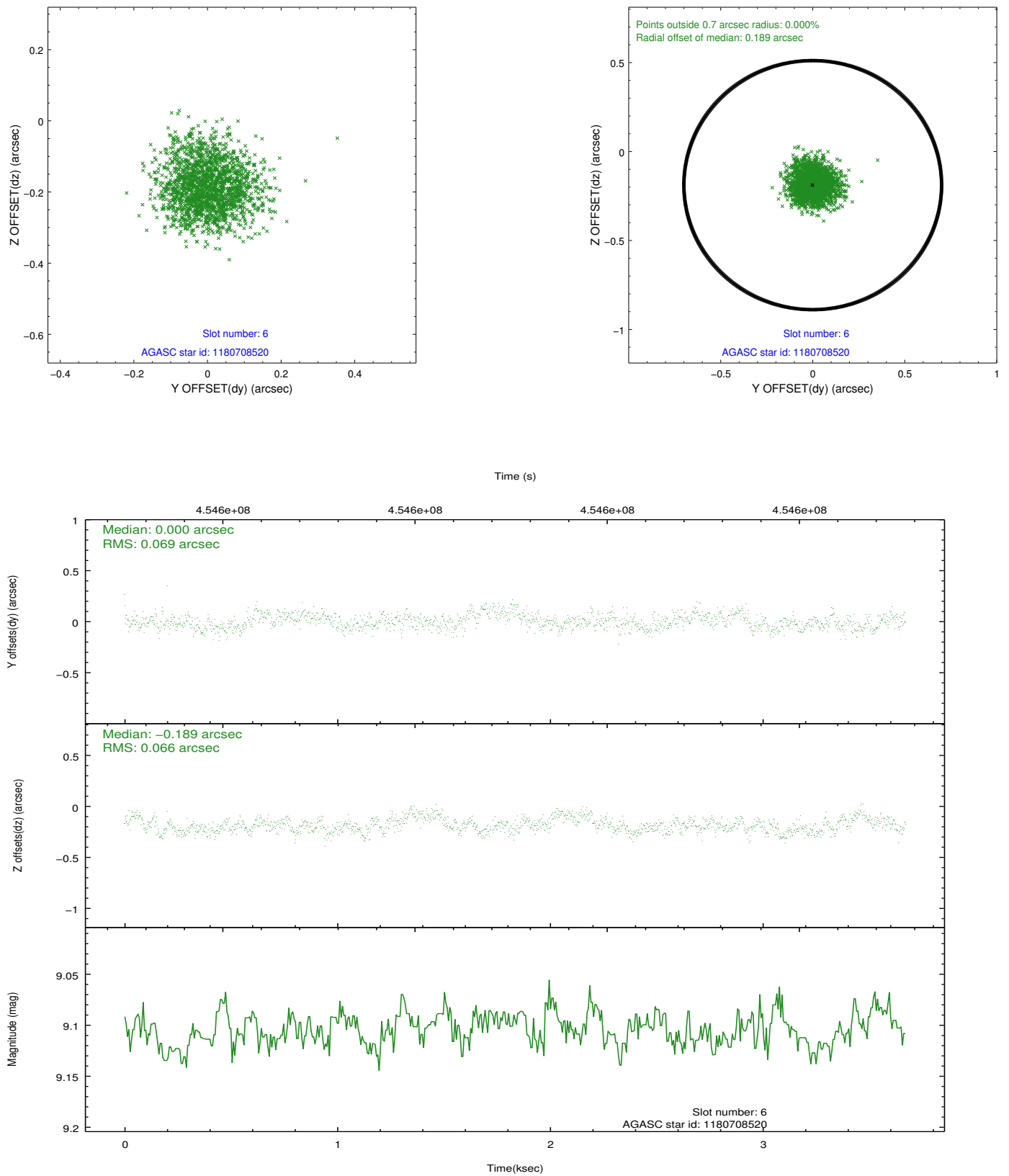
Time (s)



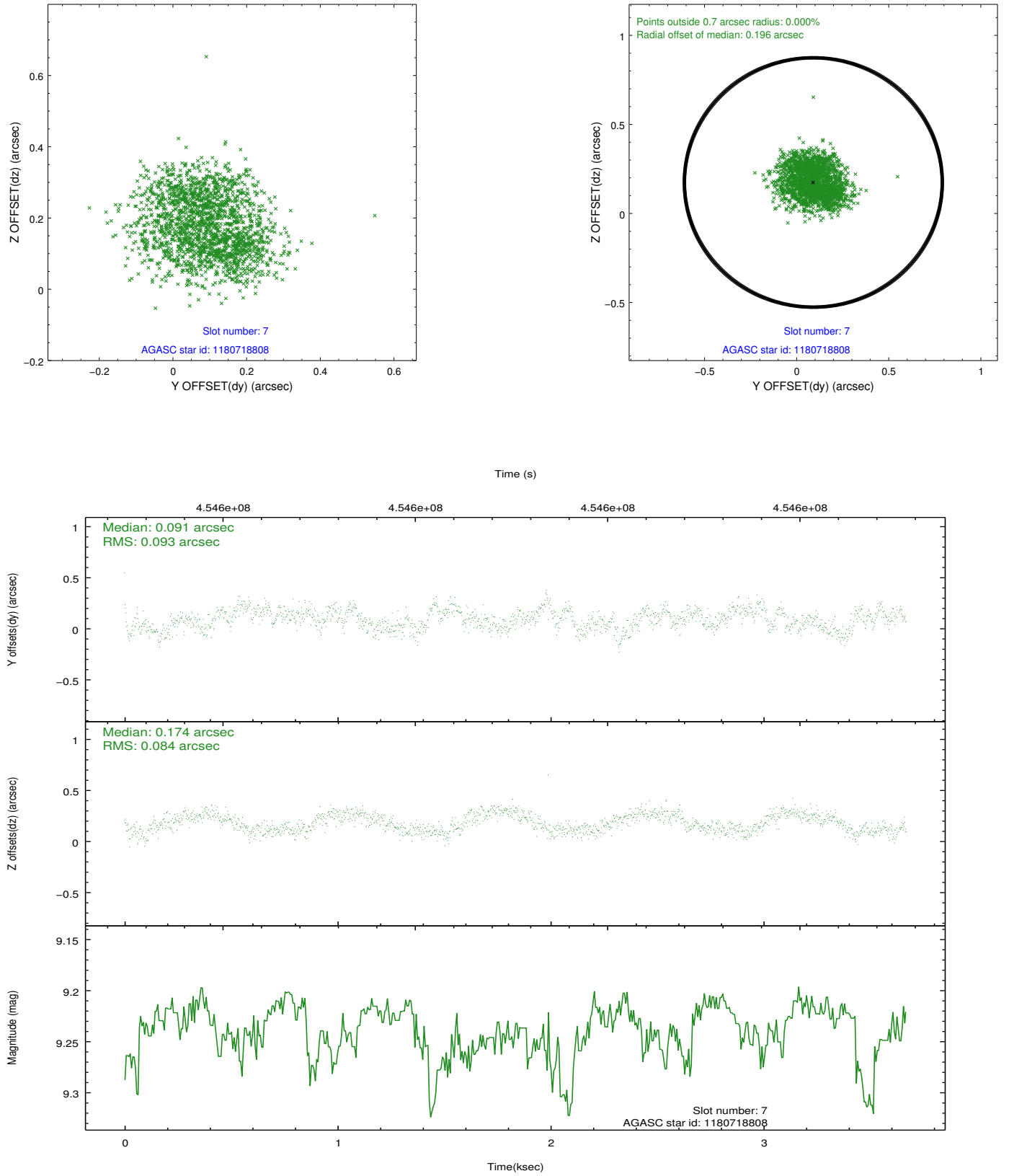
2.4.3 Slot 5



2.4.4 Slot 6

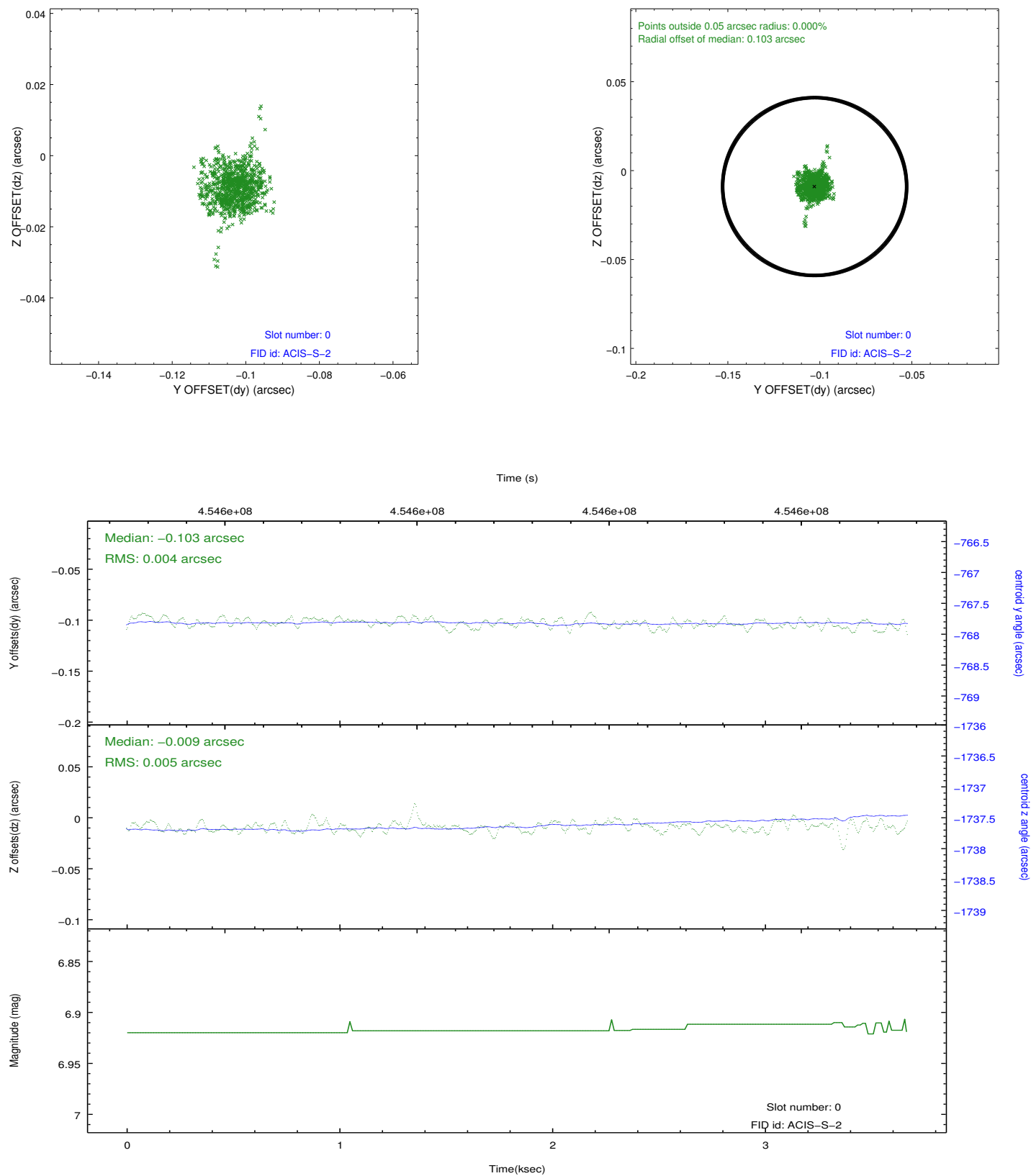


2.4.5 Slot 7

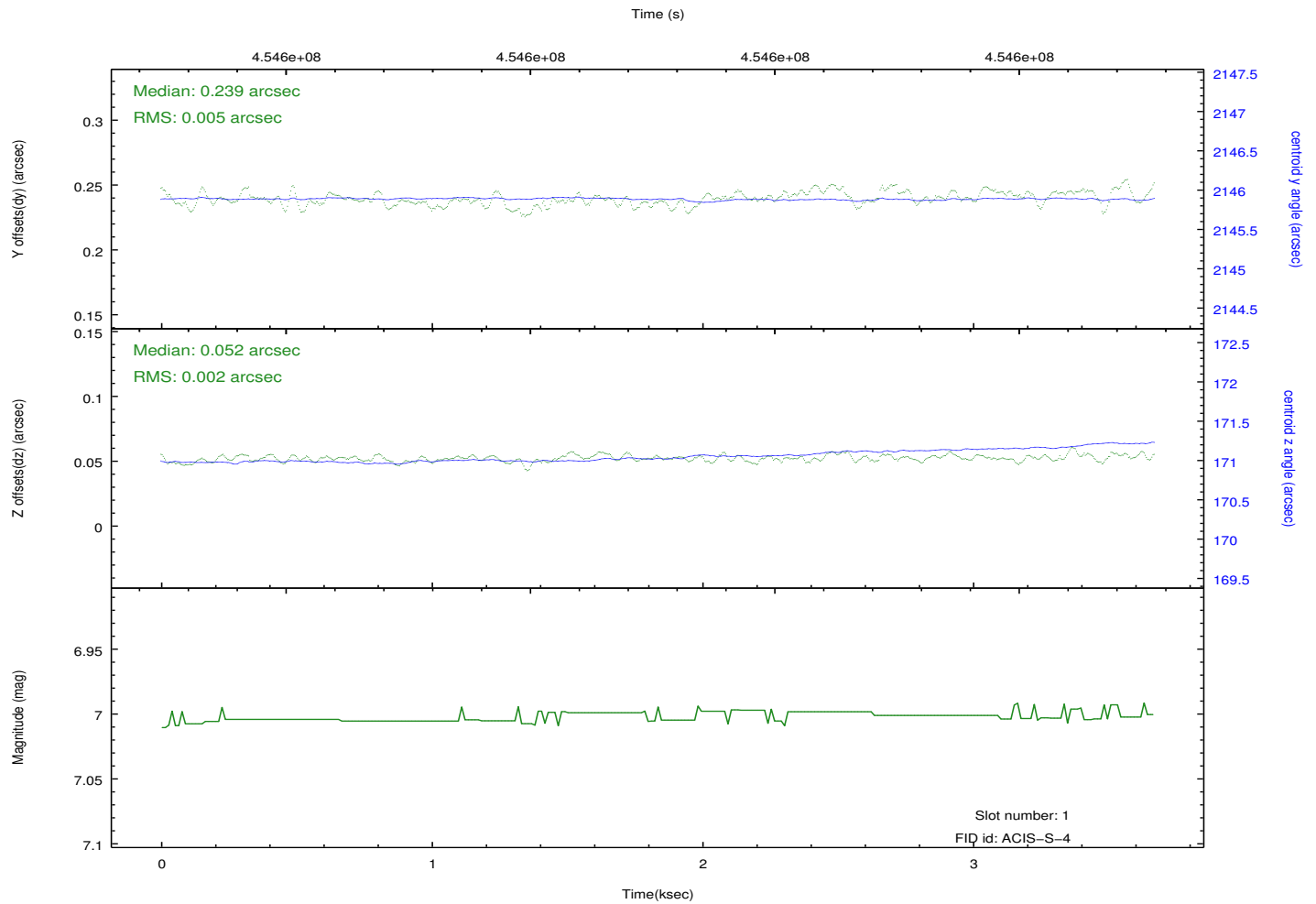
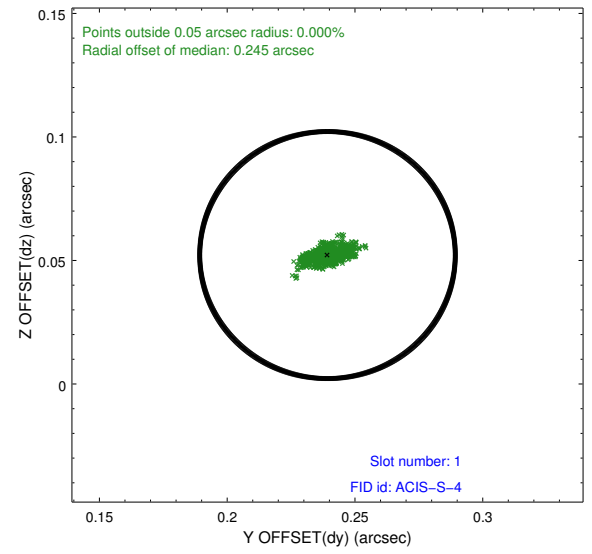
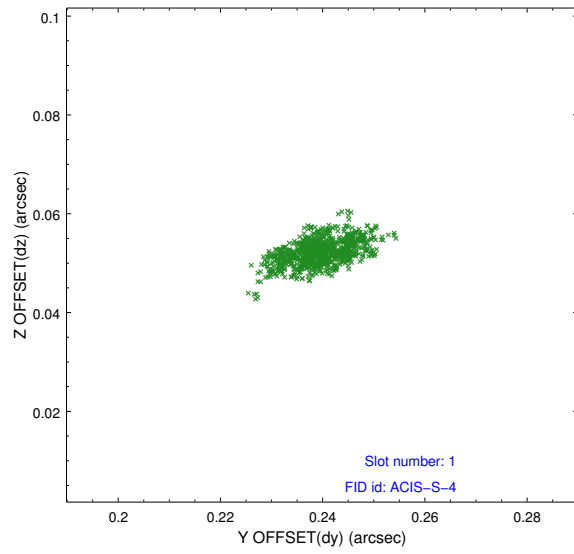


2.5 FID Slots

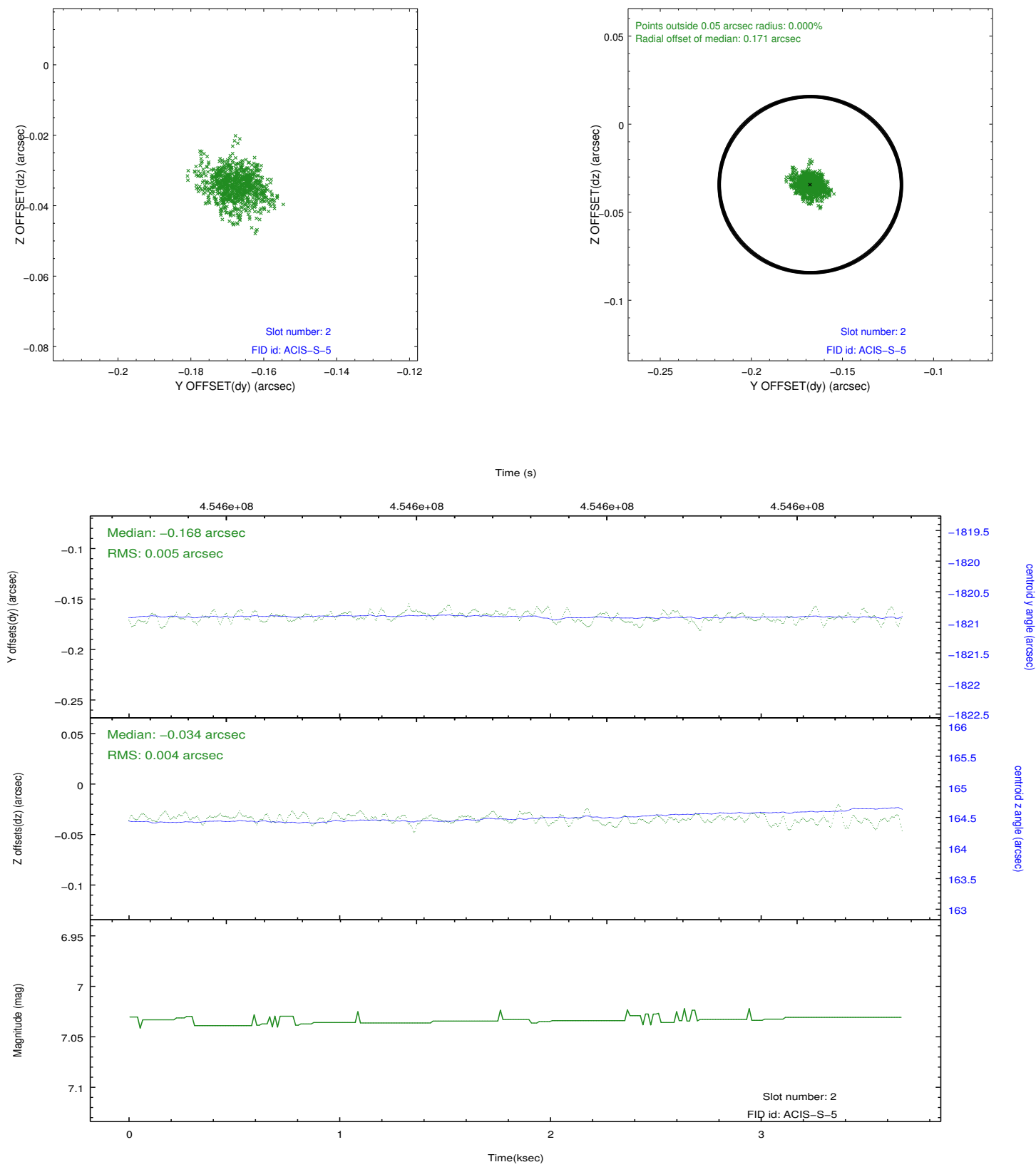
2.5.1 Slot 0



2.5.2 Slot 1



2.5.3 Slot 2



A Summary

A.1 Status

V&V Scientist	Jen Lauer
V&V Date (YYYY-MM-DD)	2012.06.07
V&V Edition	1
V&V Disposition and Status	OK
V&V Charge Time	3.4645008907914

A.2 Comments

A spatial region of the original bias map for CCD = 8 suffered from anomalously high data values. Pixels in the event data that were bias-corrected by one of the original affected bias pixels may have an apparent energy shift. While the change in energy is expected to be small (~ 20 eV), it depends on many parameters that have not yet been fully explored for this bias anomaly. The bias map for CCD = 8 has been reconstructed for this processing to remove this anomaly using scaled data from a comparable bias map from another observation. The pixels affected by the anomaly are bounded by sky coords:
(208.58040, -61.96603), (208.57332, -61.96223), (208.48031, -62.00038), (208.48738, -62.00418)