

V&V Reference Report

L2 ASCDS Version : 8.4.5

Observation 13805 - L2 Version 1
Chandra X-Ray Center

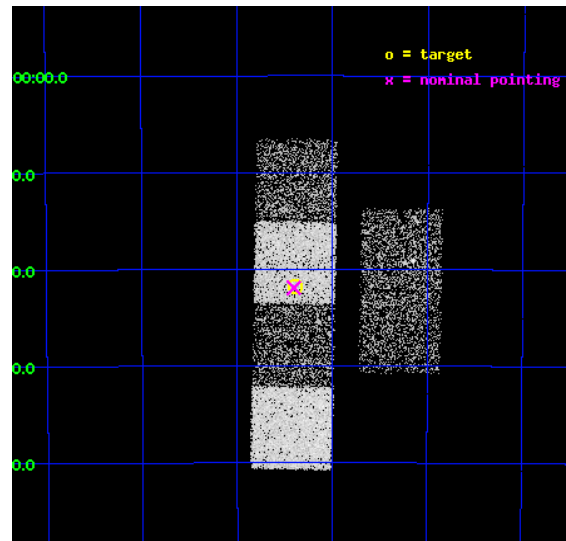
L2 Processing Date : Jul 29 2012

Contents

1	Front	2
2	OBI	3
2.1	OBI	3
2.1.1	Images	3
2.1.2	Bias	3
2.1.3	Parameters	4
2.1.4	Events	4
2.2	Compared Parameters	5
2.3	Aspect	6
2.4	Star Slots	9
2.4.1	Slot 3	9
2.4.2	Slot 4	10
2.4.3	Slot 5	11
2.4.4	Slot 6	12
2.4.5	Slot 7	13
2.5	FID Slots	14
2.5.1	Slot 0	14
2.5.2	Slot 1	15
2.5.3	Slot 2	16
A	Summary	17
A.1	Status	17
A.2	Comments	17

1 Front

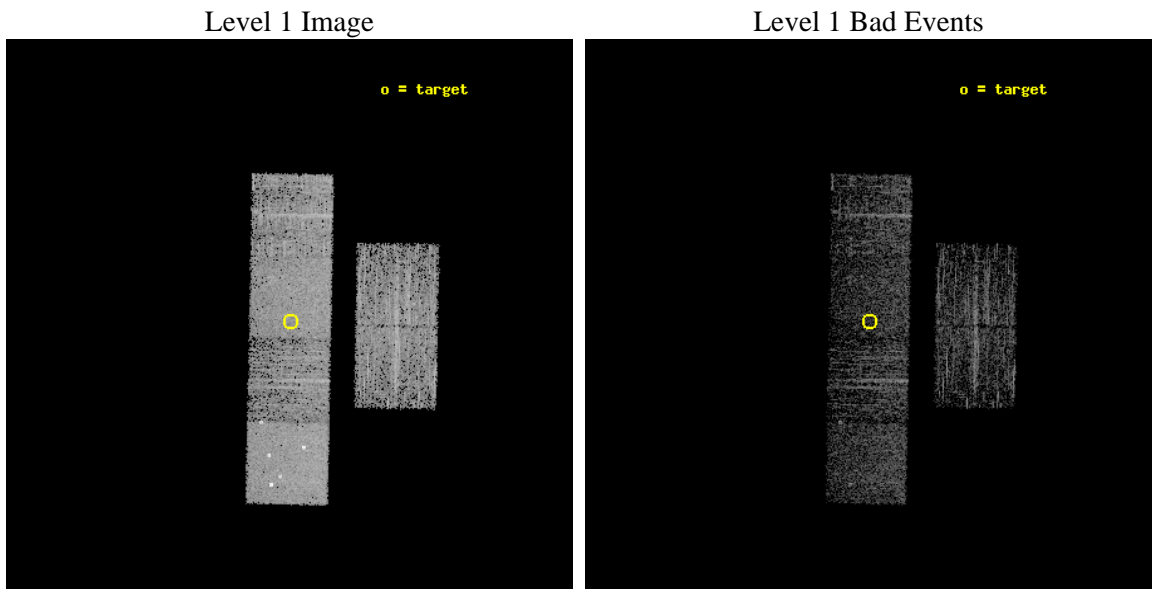
seq_num	501637	Sequence number
obs_id	13805	Observation id
title	A CASE OF MISTAKEN IDENTITY: DISRUPTED RECYCLED PULSARS OR ORPHANED ANTI-MAGNETARS?	Proposal title
observer	Prof. Dr. Bruce Allen	Principal investigator
object	PSR J1548-4821	Source name
dtcycle	0	
cycle	P	events from which exps? Prim/Second/Both
ra_targ	237.097083	Observer's specified target RA [deg]
dec_targ	-48.363806	Observer's specified target Dec [deg]
ra_nom	237.10103623395	Nominal RA [deg]
dec_nom	-48.365313767694	Nominal Dec [deg]
roll_nom	271.11233978901	Nominal Roll [deg]
revision	1	Processing version of data
ontime	3465.5999871492	Sum of GTIs [s]
livetime	3421.7164733782	Livetime [s]
ontime2	3465.5999871492	Sum of GTIs [s]
ontime3	3465.5999871492	Sum of GTIs [s]
ontime5	3465.5999871492	Sum of GTIs [s]
ontime6	3465.5999871492	Sum of GTIs [s]
ontime7	3465.5999871492	Sum of GTIs [s]
ontime8	3462.3589367867	Sum of GTIs [s]
l2events	31530	Number of level 2 events



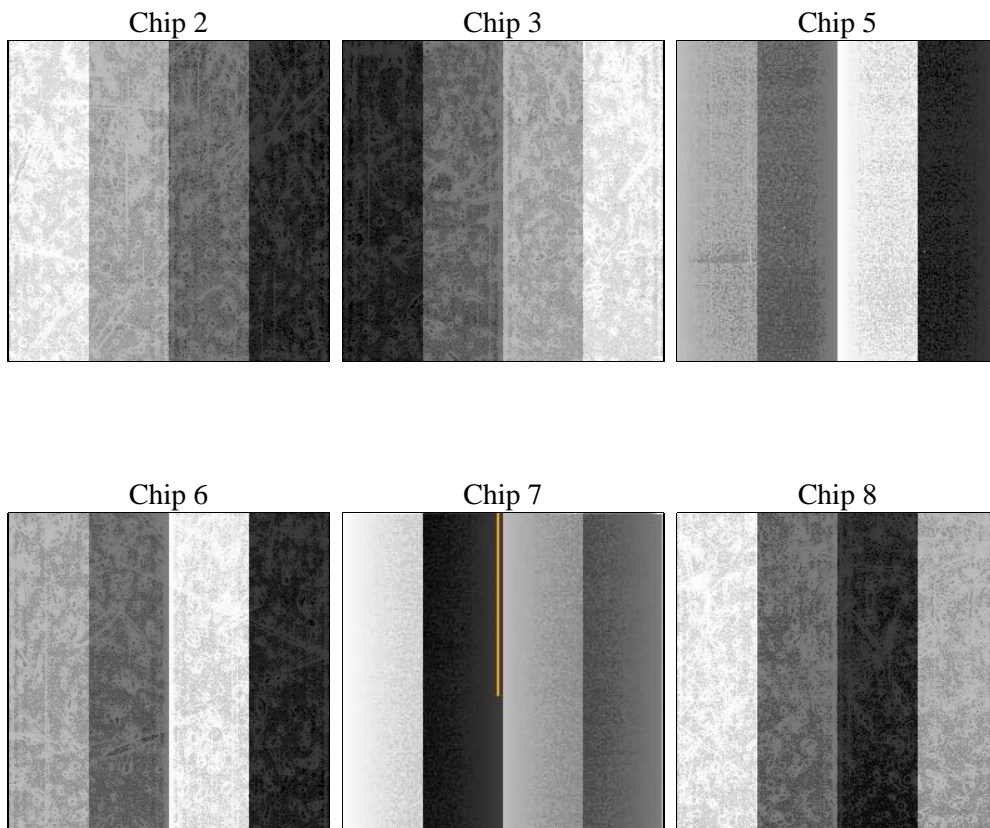
2 OBI

2.1 OBI

2.1.1 Images



2.1.2 Bias



2.1.3 Parameters

obi_num	0	Obi number	sched_exp_time	3500.000000	[s] Scheduled observation exposure time
ascdsver	8.4.5	Processing system revision	ontime	3465.5999871492	Sum of GTIs [s]
caldsver	4.5.1	 	ontime2	3465.5999871492	Sum of GTIs [s]
date	2012-07-29T15:35:08	Date and time of file creation	ontime3	3465.5999871492	Sum of GTIs [s]
revision	1	Processing version of data	ontime5	3465.5999871492	Sum of GTIs [s]
			ontime6	3465.5999871492	Sum of GTIs [s]
			ontime7	3465.5999871492	Sum of GTIs [s]
			ontime8	3462.3589367867	Sum of GTIs [s]
			l1events	130736	Number of level 1 events

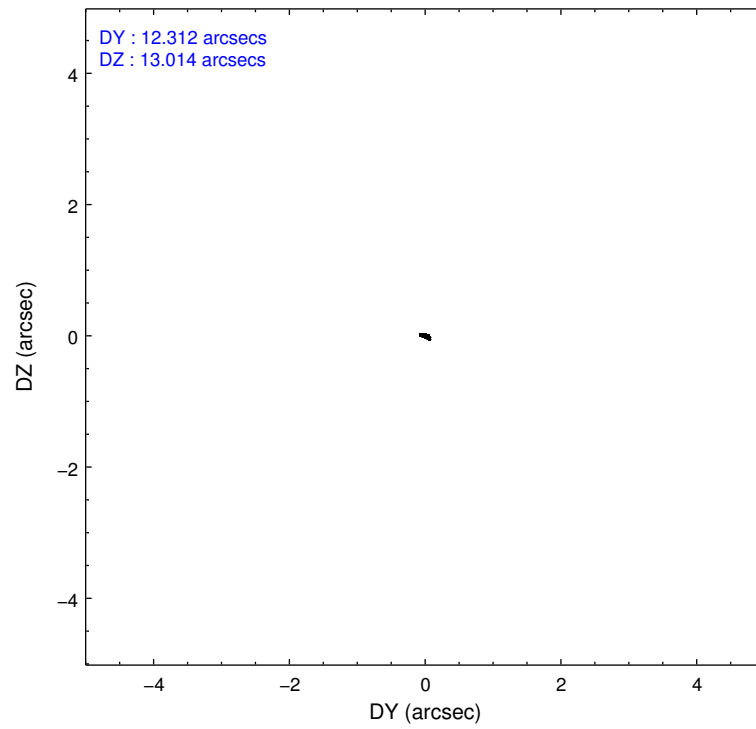
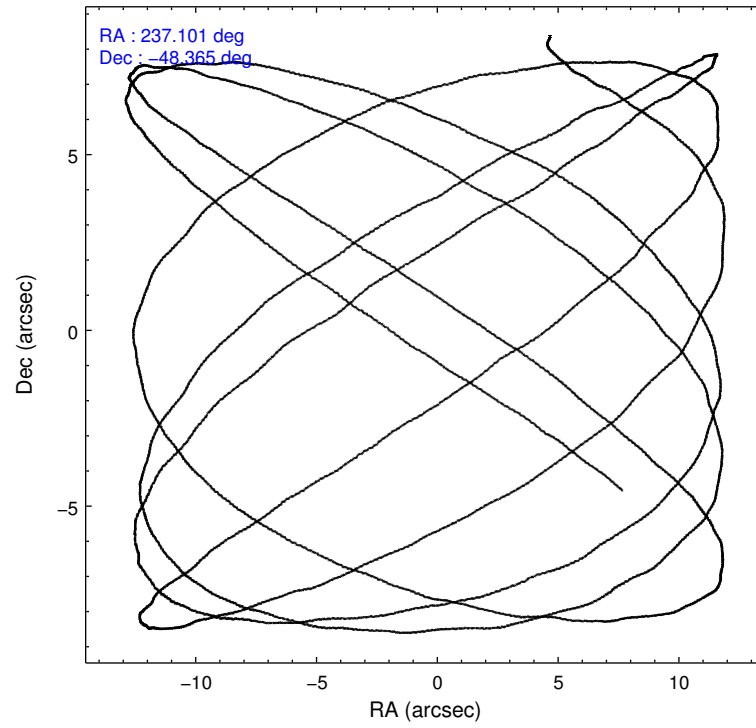
2.1.4 Events

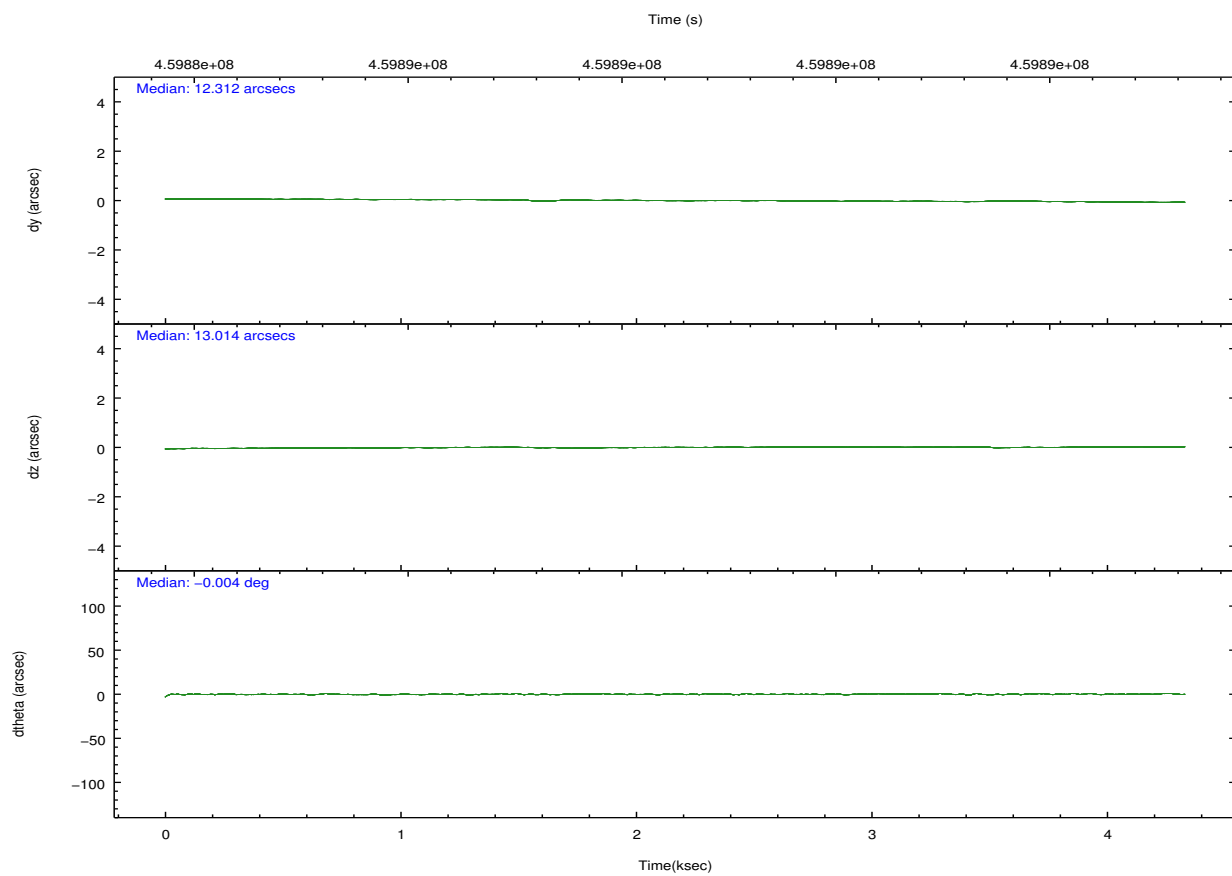
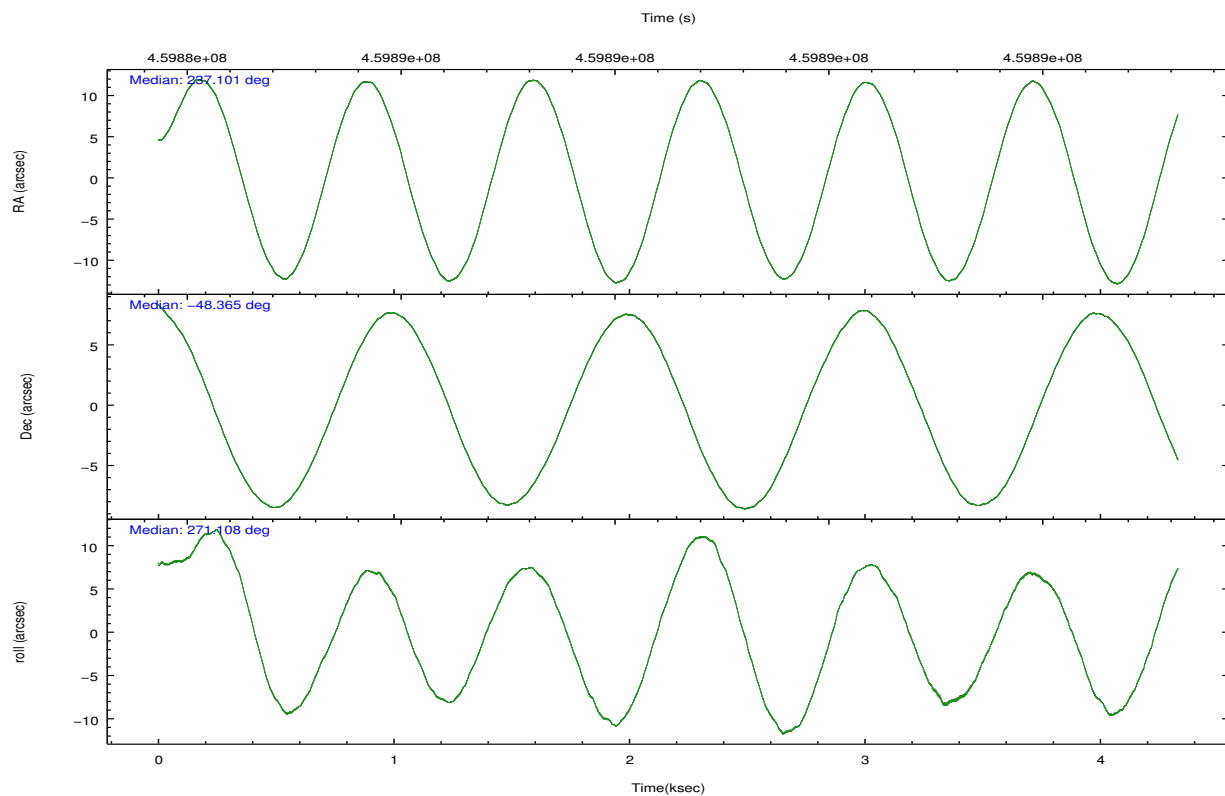
	ccd 2	ccd 3	ccd 5	ccd 6	ccd 7	ccd 8		ccd 2	ccd 3	ccd 5	ccd 6	ccd 7	ccd 8
level 1 events	17653	17857	31632	17155	24231	22208	grade 0 events	760	873	3337	759	976	1680
rejected events	15583	15608	14999	14974	13369	16534		4%	4%	10%	4%	4%	7%
rejected %	88%	87%	47%	87%	55%	74%	grade 1 events	11	7	167	11	29	15
								0%	0%	0%	0%	0%	0%
							grade 2 events	484	471	4787	487	2267	1375
								2%	2%	15%	2%	9%	6%
							grade 3 events	206	211	502	206	1009	563
								1%	1%	1%	1%	4%	2%
							grade 4 events	230	230	461	220	895	504
								1%	1%	1%	1%	3%	2%
							grade 5 events	794	919	1977	872	2428	1281
								4%	5%	6%	5%	10%	5%
							grade 6 events	392	470	7585	518	5740	1554
								2%	2%	23%	3%	23%	6%
							grade 7 events	14776	14676	12816	14082	10887	15236
								83%	82%	40%	82%	44%	68%

2.2 Compared Parameters

Parameter	Planned	Actual	Parameter	Planned	Actual
Instrument	ACIS	ACIS	Obspar format version number	7	7
Detector	ACIS-235678	ACIS-235678	Obspar file type	PREDICTED	ACTUAL
Grating	NONE	NONE	Obspar update status	NONE	UPDATED
Data mode	VFAINT	VFAINT	CCD I0 on	N	N
Observation mode	POINTING	POINTING	CCD I1 on	N	N
[deg] Pointing RA	237.079244	237.101036233951	CCD I2 on	O1	Y
[deg] Pointing Dec	-48.342168	-48.36531376769429	CCD I3 on	O2	Y
[deg] Pointing Roll	270.939428	271.1123397890055	CCD S0 on	N	N
[mm] SIM focus pos	-0.684267	-0.6828225247311905	CCD S1 on	Y	Y
[mm] SIM defocus	0	0.001444936568705701	CCD S2 on	Y	Y
[mm] SIM translation stage pos	-190.132523	-190.1400660498719	CCD S3 on	Y	Y
[mm] SIM translation stage offset	0	0.00754346686406393	CCD S4 on	Y	Y
[s] Observation start time (MET)	459885916.184000	459884485.29172	CCD S5 on	N	N
Observation start date	2012-07-28T18:04:09	2012-07-28T17:41:25	Number of optional ACIS chips dropped	0	0
[s] Observation end time (MET)	459889416.184000	459890742.40455	On-chip summing requested	N	N
Observation end date	2012-07-28T19:02:29	2012-07-28T19:25:42	Subarray requested	NONE	NONE
Read mode	TIMED	TIMED	Alternating exposures requested	N	N
			[s] Primary exposure time	0.000000	3.2

2.3 Aspect



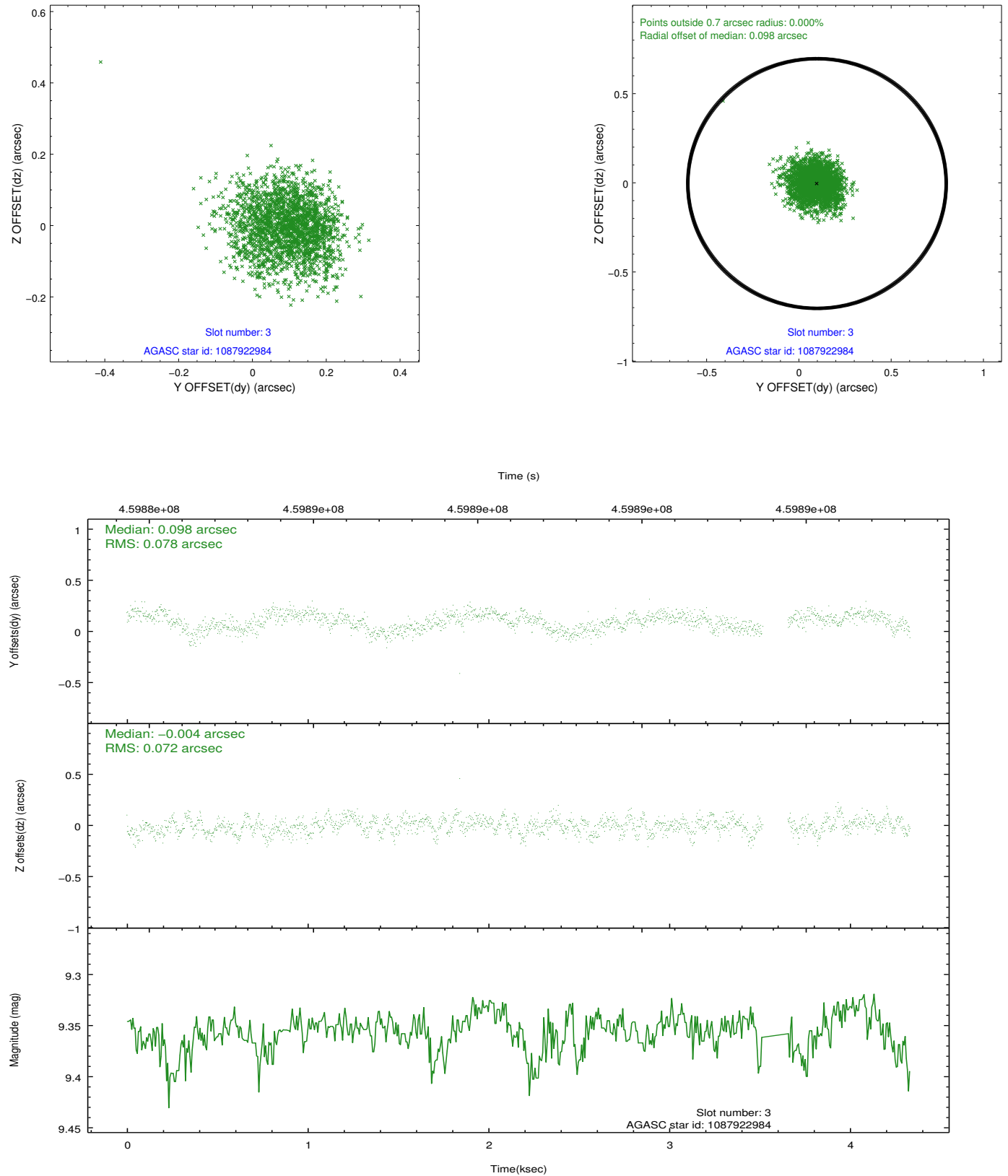


Slot Statistics

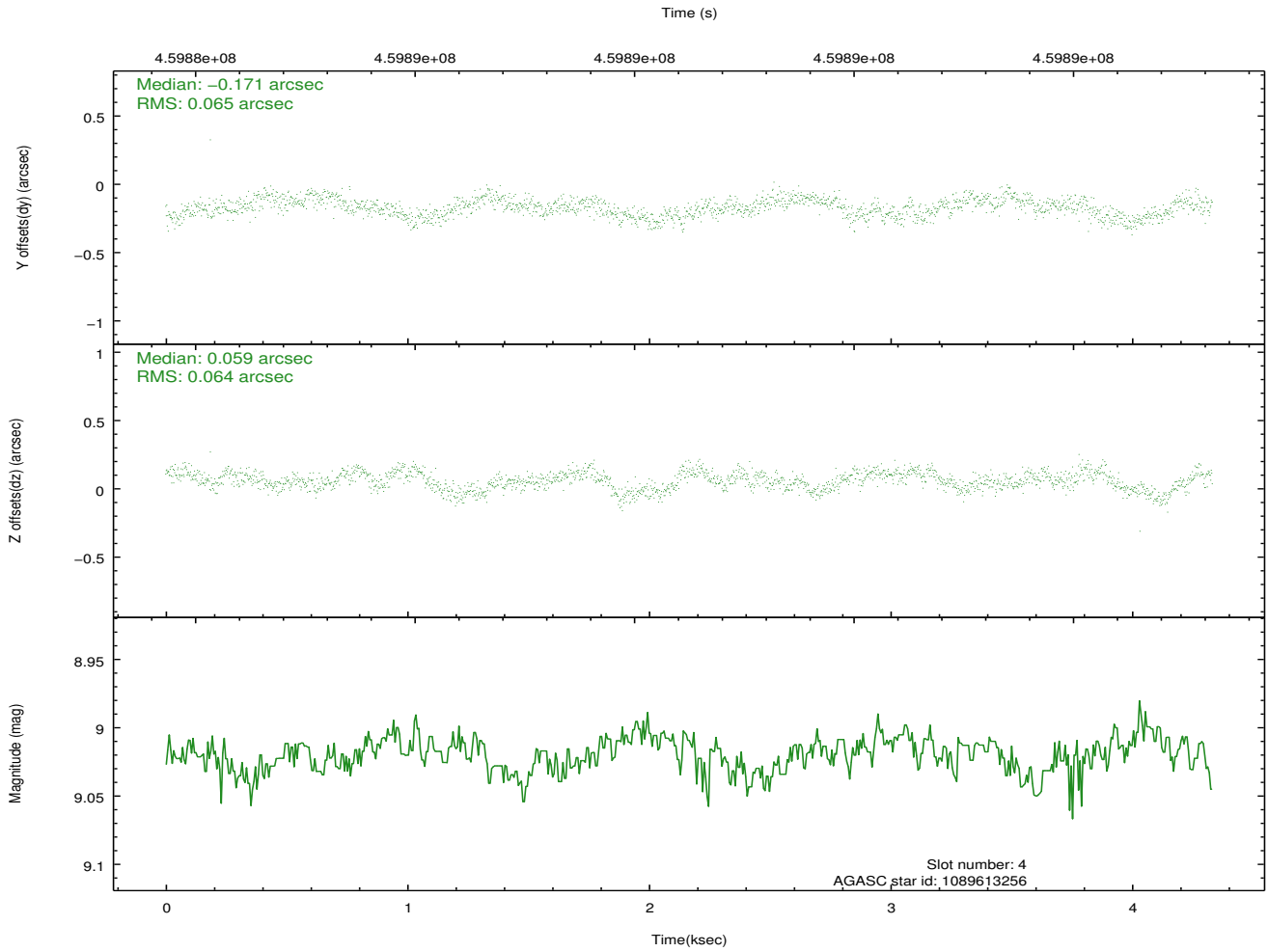
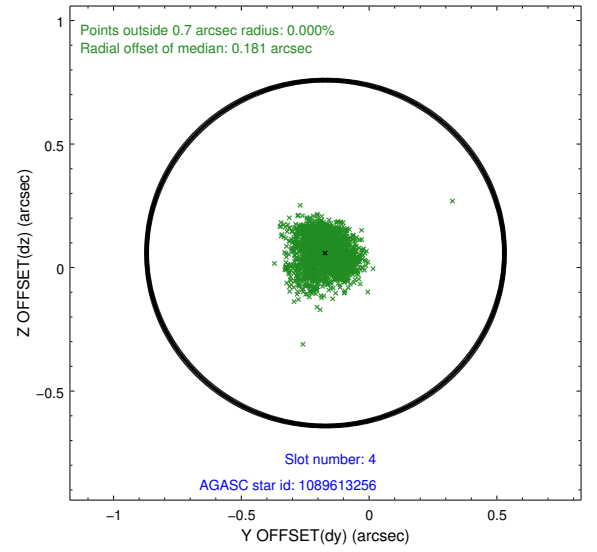
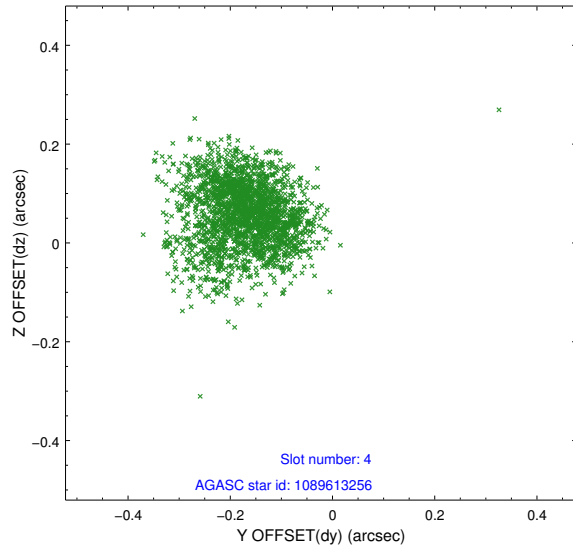
slot	status	id	mag	n_pts	med_dy	med_dz	dr1	dr2	ra	dec	mean_y	mean_z
0	FID	ACIS-S-2	7.02	1057	-0.042	-0.072	0.007	0.011	0.000000	0.000000	-765.27	-1734.40
1	FID	ACIS-S-4	7.11	1057	0.201	0.040	0.005	0.010	0.000000	0.000000	2147.61	172.69
2	FID	ACIS-S-5	7.15	1057	-0.190	0.041	0.007	0.012	0.000000	0.000000	-1816.41	168.02
3	GUIDE	1087922984	9.35	2043	0.098	-0.004	0.113	0.176	236.241037	-48.314318	-121.15	-2004.88
4	GUIDE	1089613256	9.02	2114	-0.171	0.059	0.097	0.156	236.999767	-47.845996	-1788.67	-163.68
5	GUIDE	1089617528	7.95	2114	0.043	0.024	0.057	0.091	237.891894	-48.606448	992.90	1918.50
6	GUIDE	1089618992	7.21	2114	0.097	-0.001	0.096	0.159	236.668169	-48.736827	1408.61	-998.22
7	GUIDE	1090128224	7.48	2113	-0.057	-0.083	0.067	0.101	237.257593	-48.764719	1530.29	396.94

2.4 Star Slots

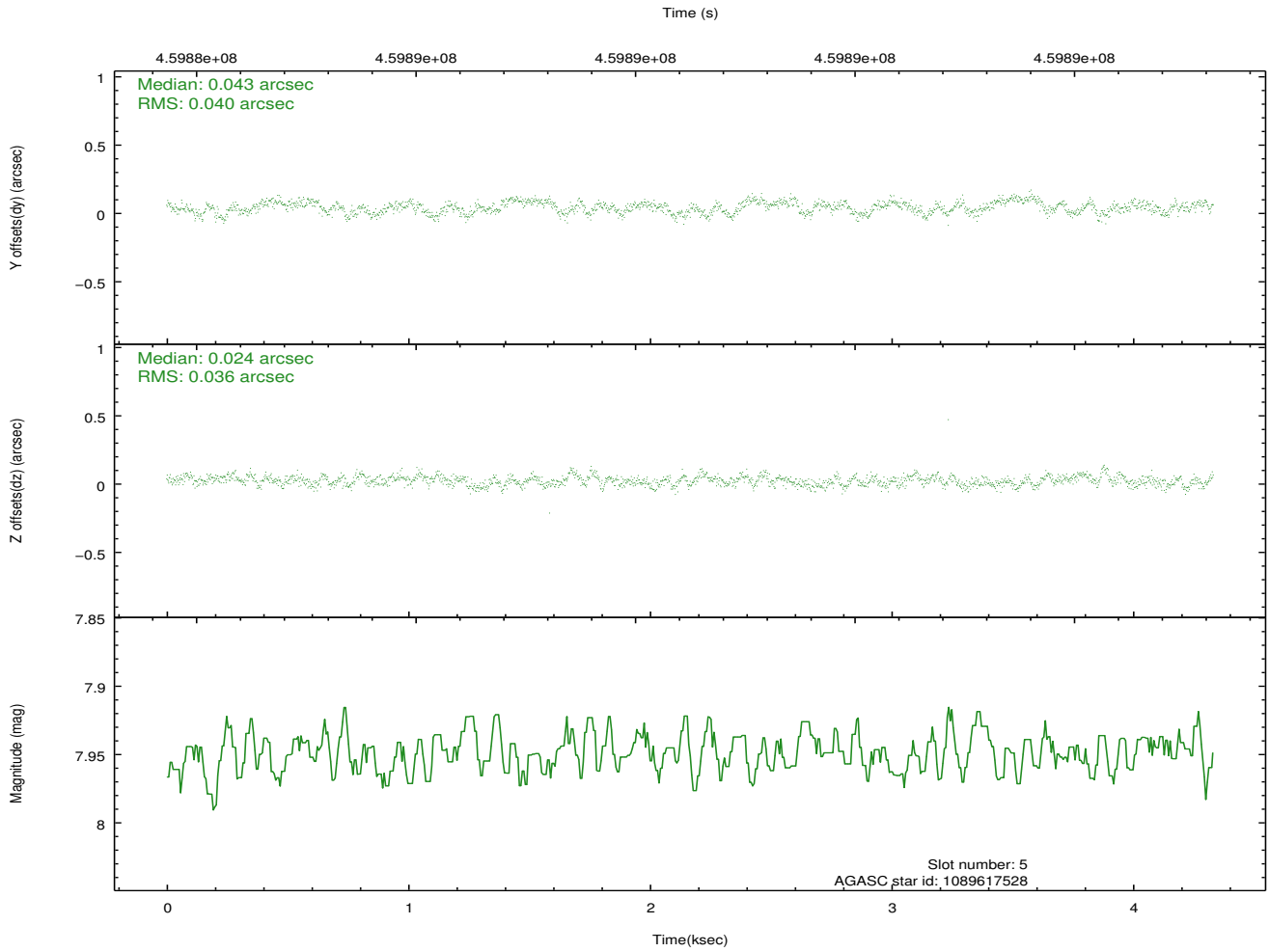
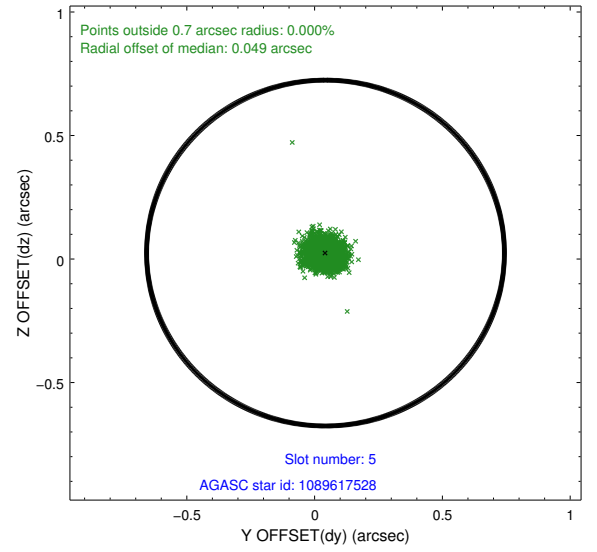
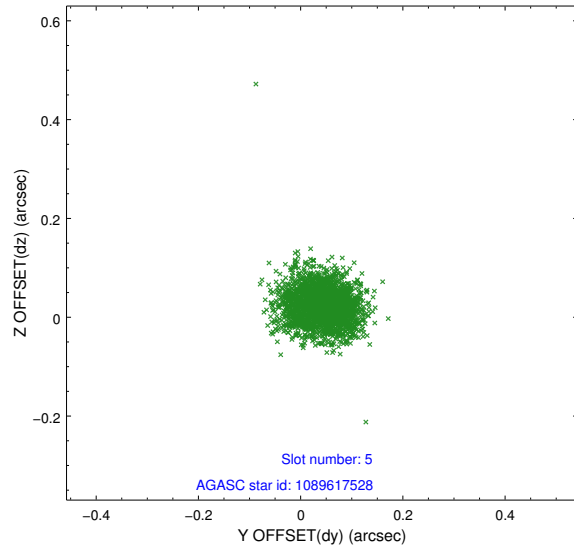
2.4.1 Slot 3



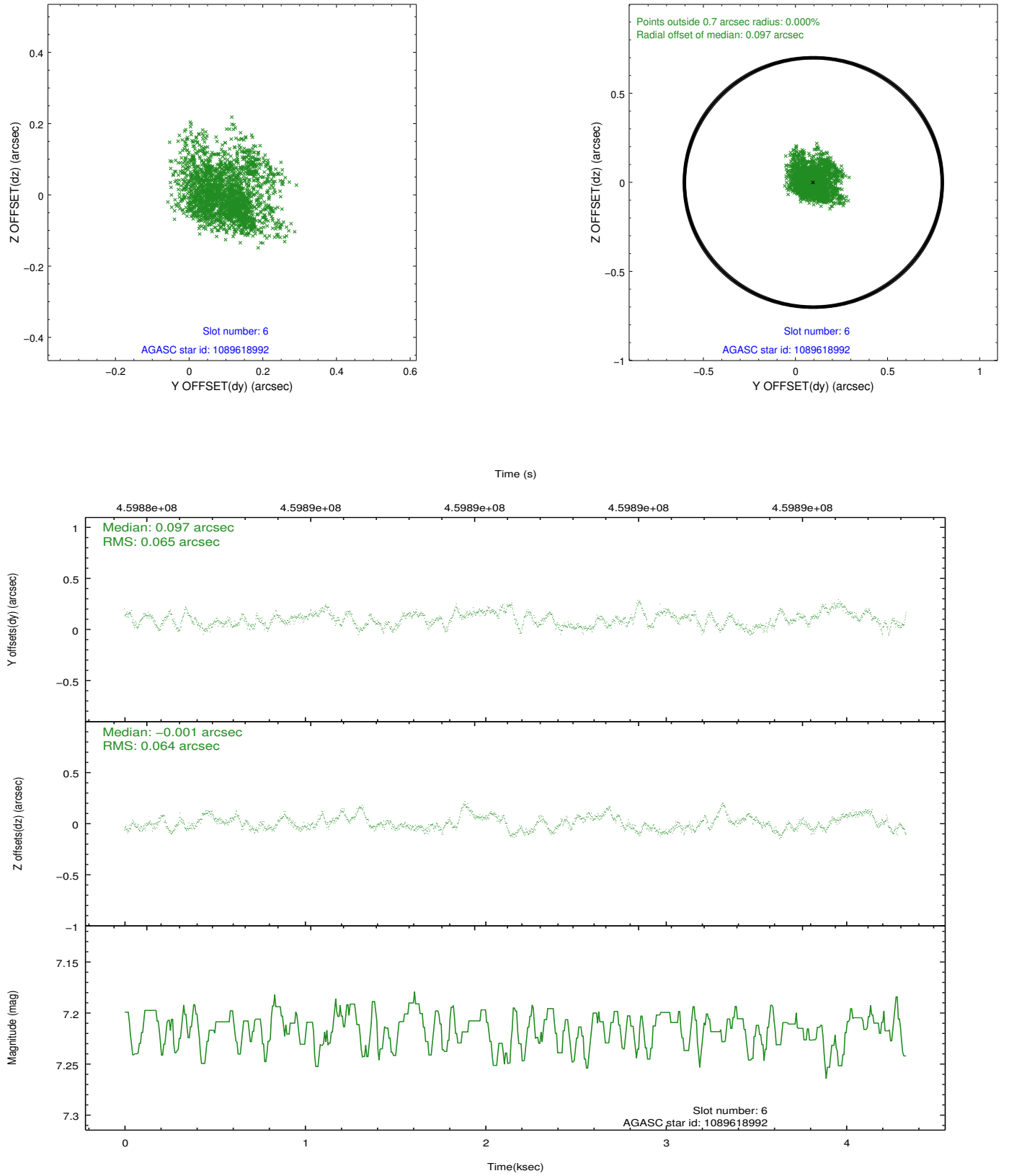
2.4.2 Slot 4



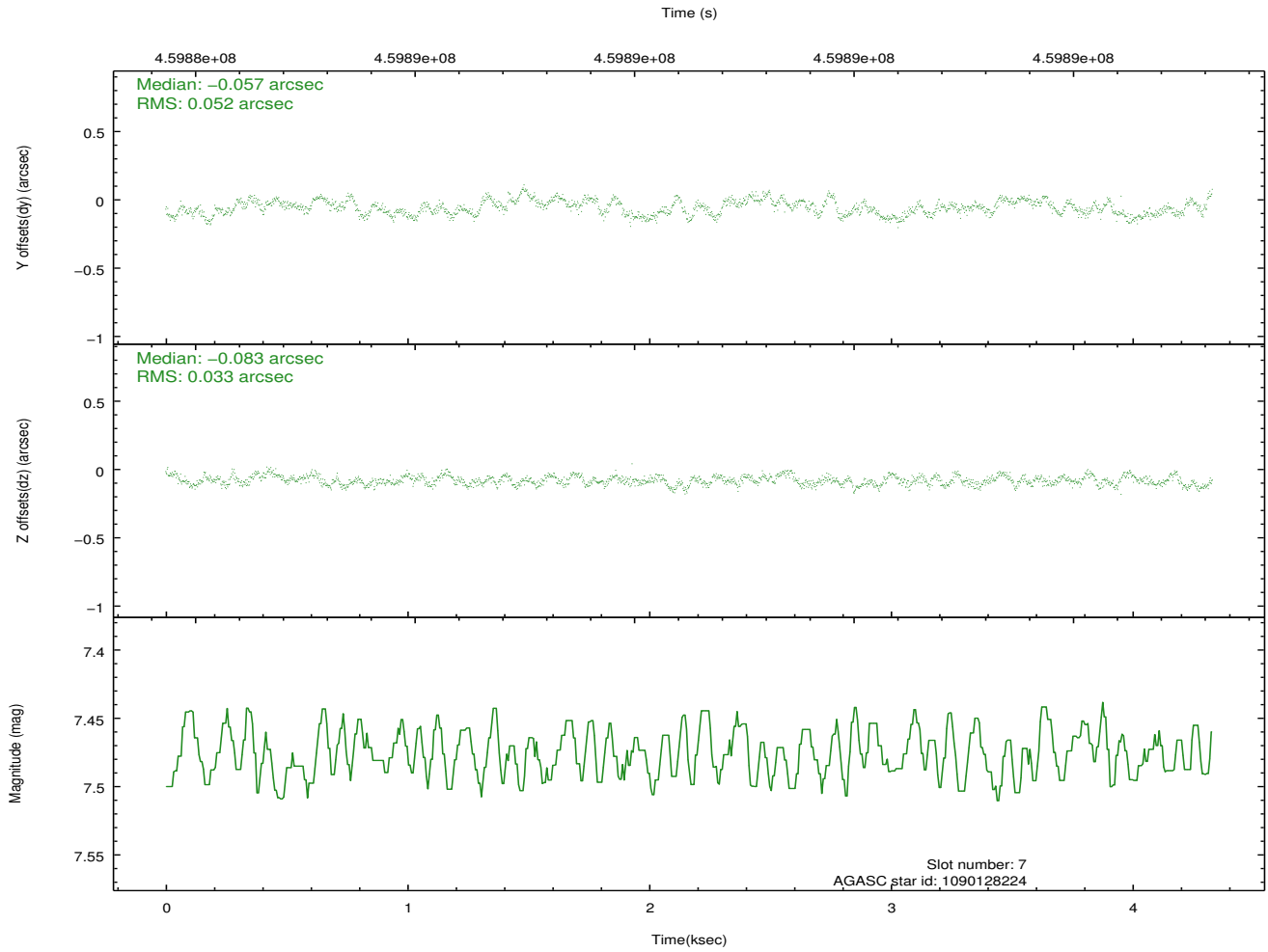
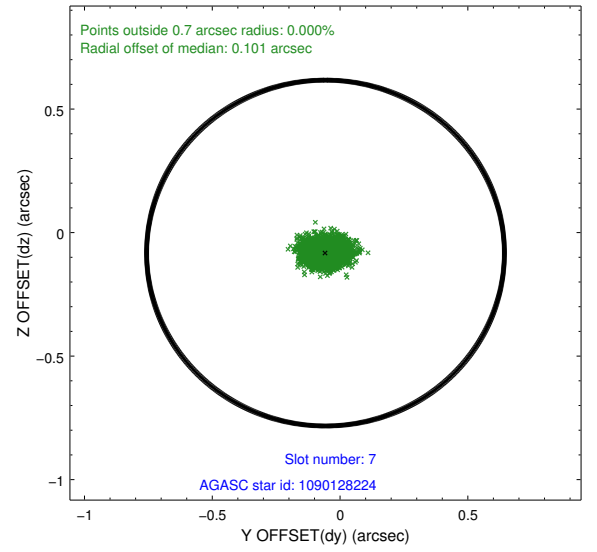
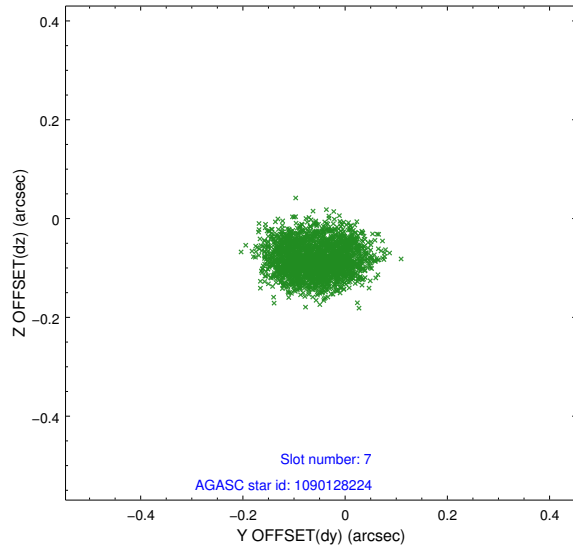
2.4.3 Slot 5



2.4.4 Slot 6

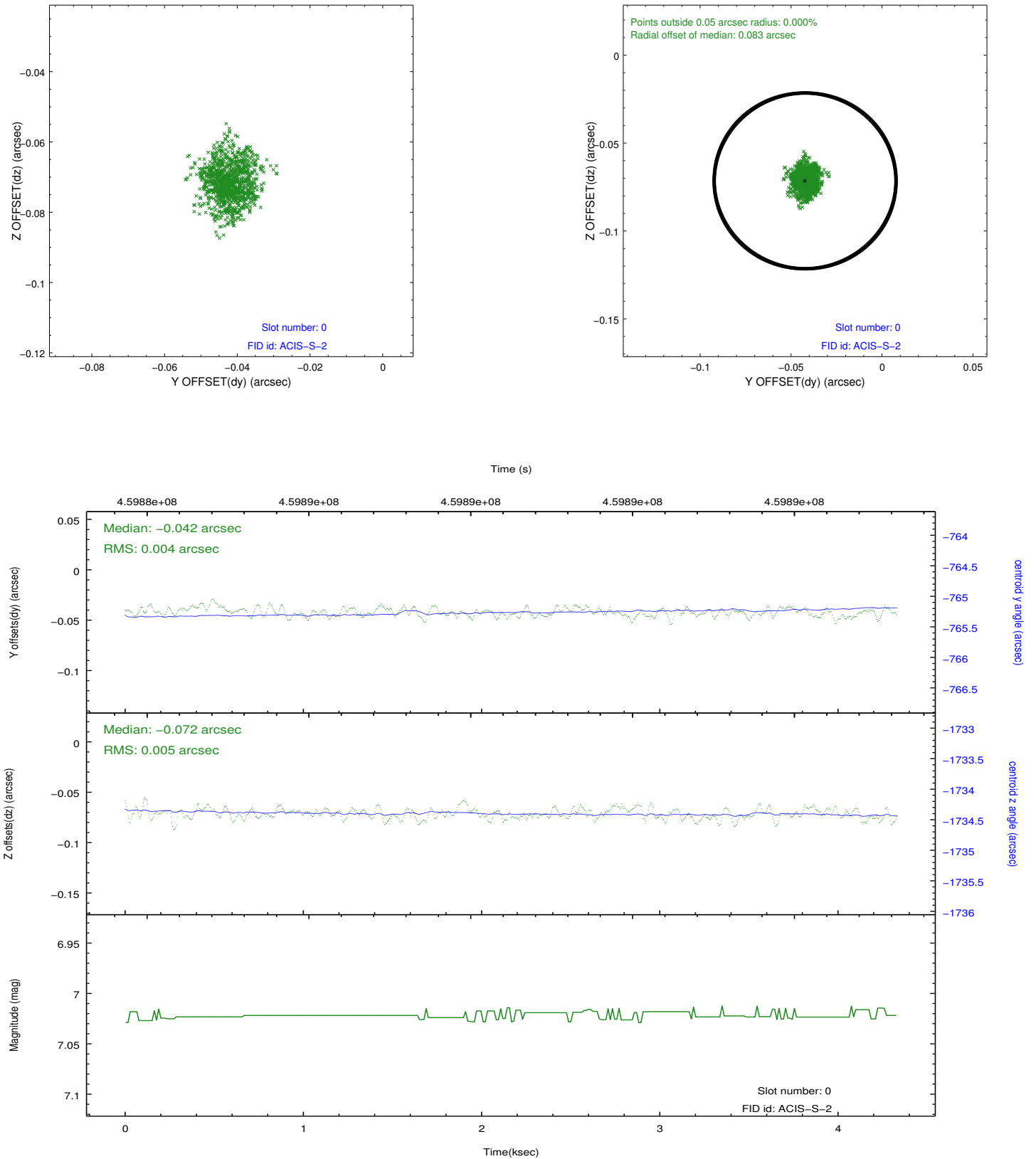


2.4.5 Slot 7

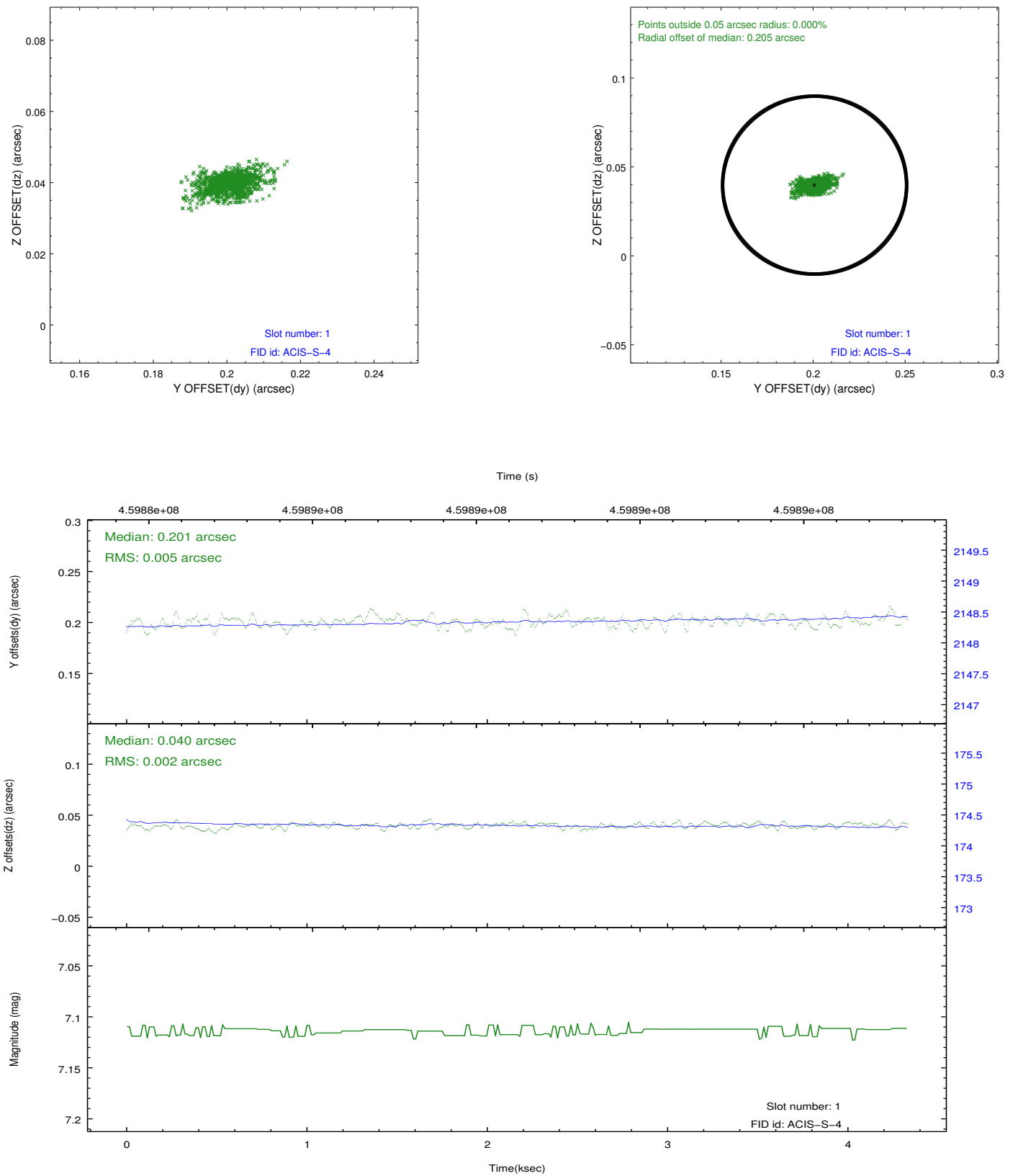


2.5 FID Slots

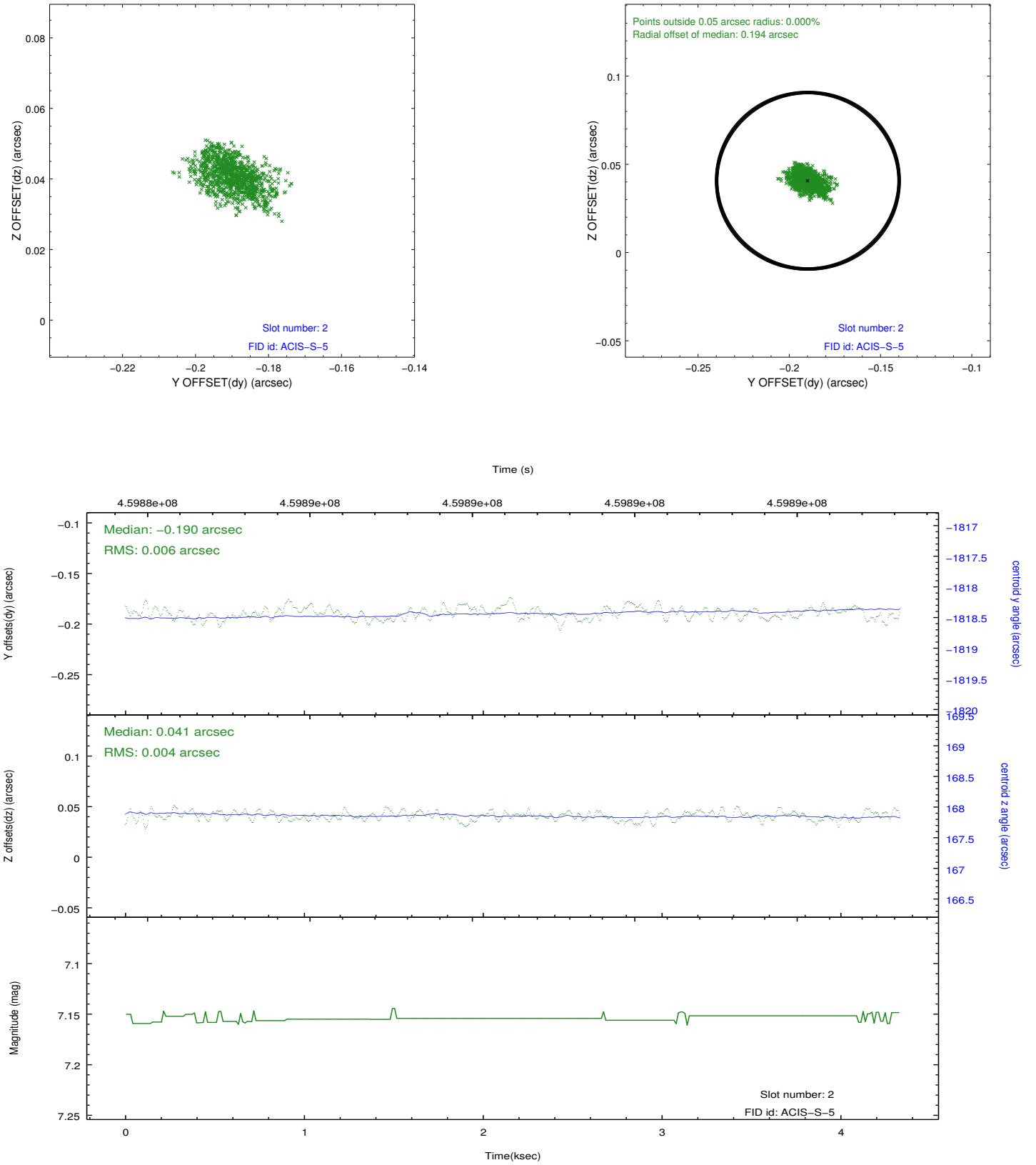
2.5.1 Slot 0



2.5.2 Slot 1



2.5.3 Slot 2



A Summary

A.1 Status

V&V Scientist	Beth Sundheim
V&V Date (YYYY-MM-DD)	2012.07.29
V&V Edition	1
V&V Disposition and Status	OK
V&V Charge Time	3.4655999871492

A.2 Comments