

V&V Reference Report

L2 ASCDS Version : 8.4.5

Observation 13803 - L2 Version 2
Chandra X-Ray Center

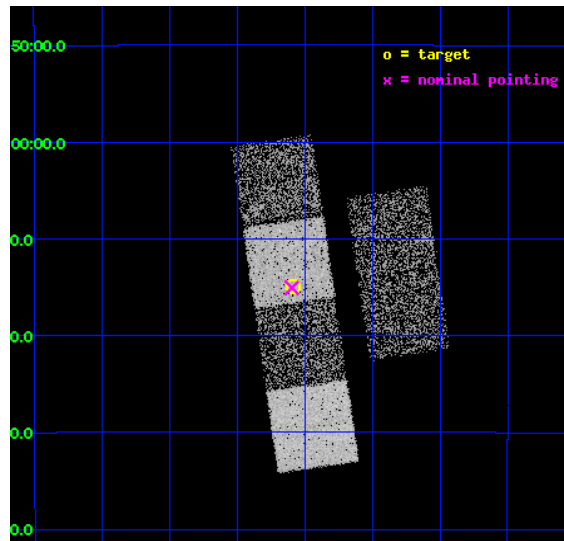
L2 Processing Date : Jul 25 2012

Contents

1	Front	2
2	OBI	3
2.1	OBI	3
2.1.1	Images	3
2.1.2	Bias	3
2.1.3	Parameters	4
2.1.4	Events	4
2.2	Compared Parameters	5
2.3	Aspect	6
2.4	Star Slots	9
2.4.1	Slot 3	9
2.4.2	Slot 4	10
2.4.3	Slot 5	11
2.4.4	Slot 6	12
2.4.5	Slot 7	13
2.5	FID Slots	14
2.5.1	Slot 0	14
2.5.2	Slot 1	15
2.5.3	Slot 2	16
A	Summary	17
A.1	Status	17
A.2	Comments	17

1 Front

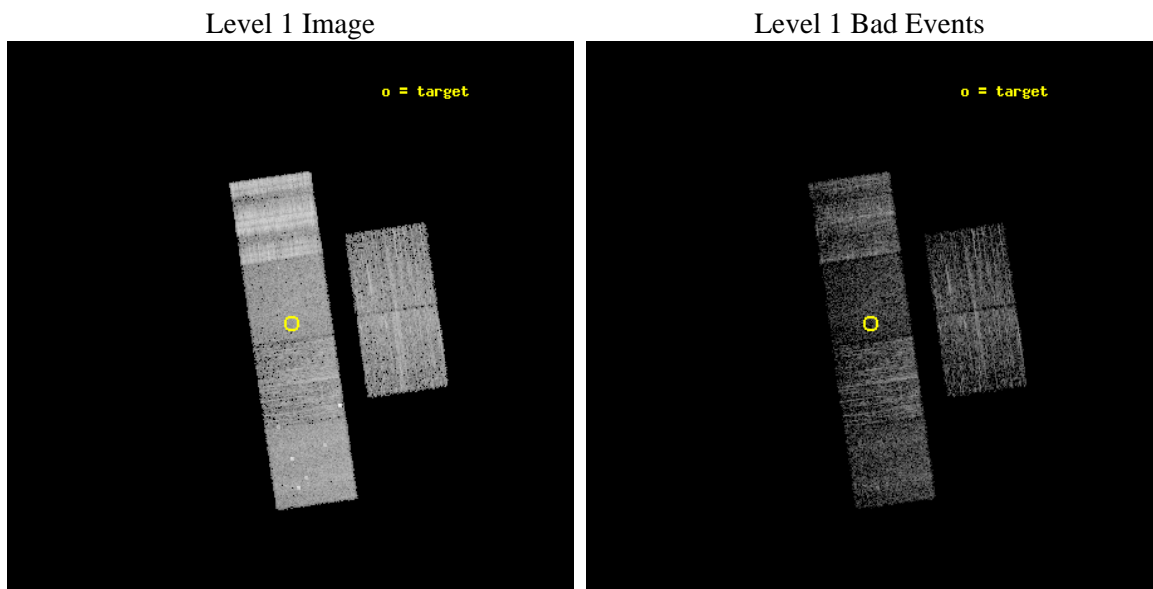
seq_num	501635	Sequence number
obs_id	13803	Observation id
title	A CASE OF MISTAKEN IDENTITY: DISRUPTED RECYCLED PULSARS OR ORPHANED ANTI-MAGNETARS?	Proposal title
observer	Prof. Dr. Bruce Allen	Principal investigator
object	PSR J1753-1914	Source name
dtcycle	0	
cycle	P	events from which exps? Prim/Second/Both
ra_targ	268.396667	Observer's specified target RA [deg]
dec_targ	-19.249444	Observer's specified target Dec [deg]
ra_nom	268.39914669457	Nominal RA [deg]
dec_nom	-19.25127598668	Nominal Dec [deg]
roll_nom	261.70647575116	Nominal Roll [deg]
revision	2	Processing version of data
ontime	3464.51690799	Sum of GTIs [s]
livetime	3420.6471088194	Livetime [s]
ontime2	3464.5579479933	Sum of GTIs [s]
ontime3	3464.3937879801	Sum of GTIs [s]
ontime5	3464.4758679867	Sum of GTIs [s]
ontime6	3464.4348279834	Sum of GTIs [s]
ontime7	3464.51690799	Sum of GTIs [s]
ontime8	3464.3527479768	Sum of GTIs [s]
l2events	38139	Number of level 2 events



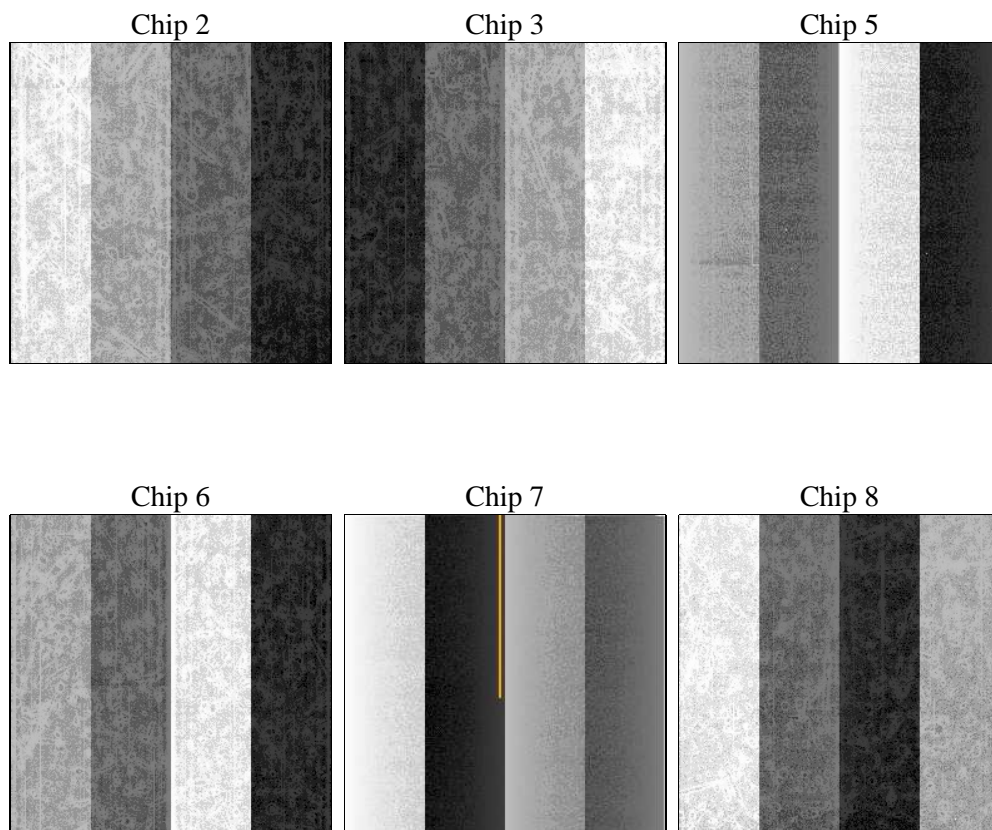
2 OBI

2.1 OBI

2.1.1 Images



2.1.2 Bias



2.1.3 Parameters

obi_num	1	Obi number	sched_exp_time	3500.000000	[s] Scheduled observation exposure time
ascdsver	8.4.5	Processing system revision	ontime	3464.51690799	Sum of GTIs [s]
caldsver	4.5.1	 	ontime2	3464.5579479933	Sum of GTIs [s]
date	2012-07-25T16:59:00	Date and time of file creation	ontime3	3464.3937879801	Sum of GTIs [s]
revision	2	Processing version of data	ontime5	3464.4758679867	Sum of GTIs [s]
			ontime6	3464.4348279834	Sum of GTIs [s]
			ontime7	3464.51690799	Sum of GTIs [s]
			ontime8	3464.3527479768	Sum of GTIs [s]
			l1events	206420	Number of level 1 events

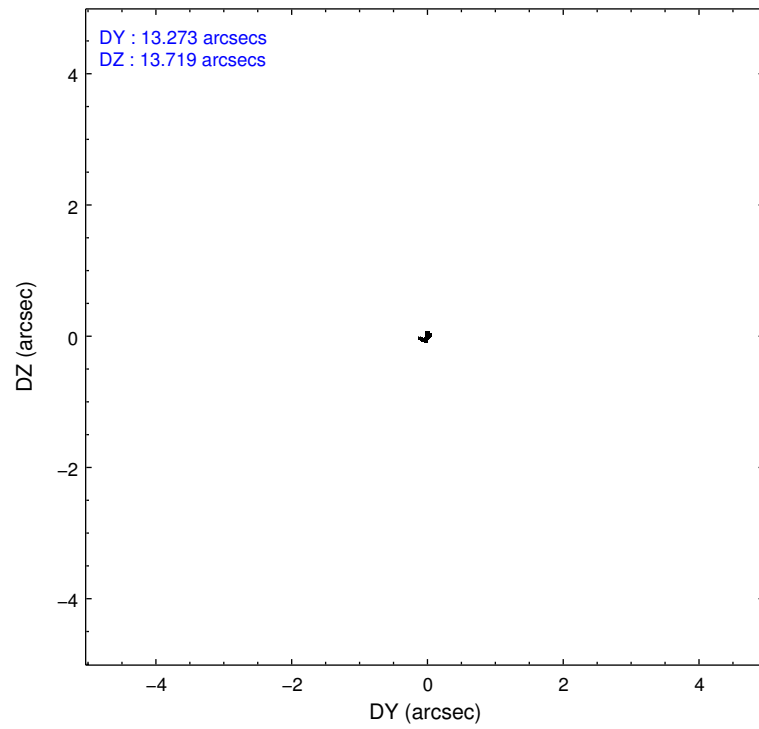
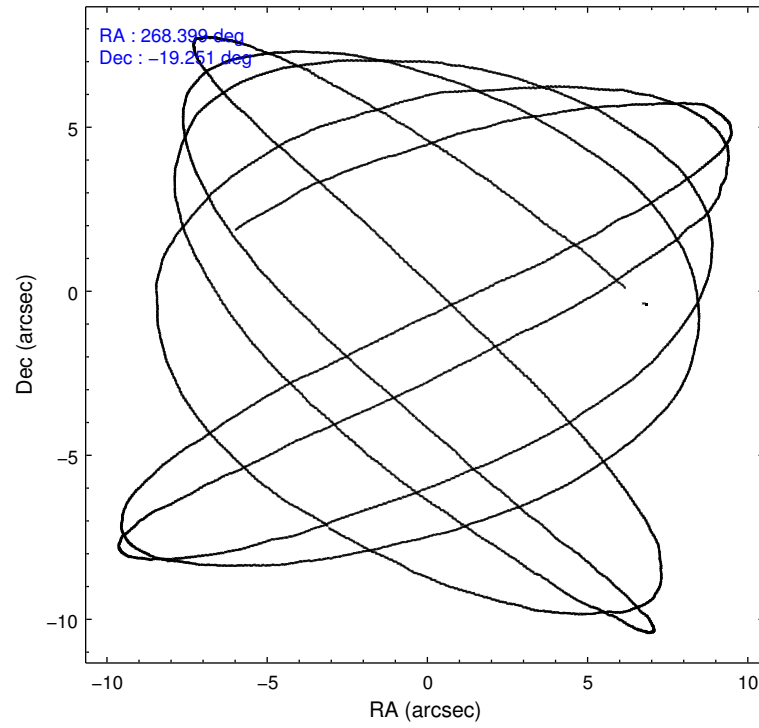
2.1.4 Events

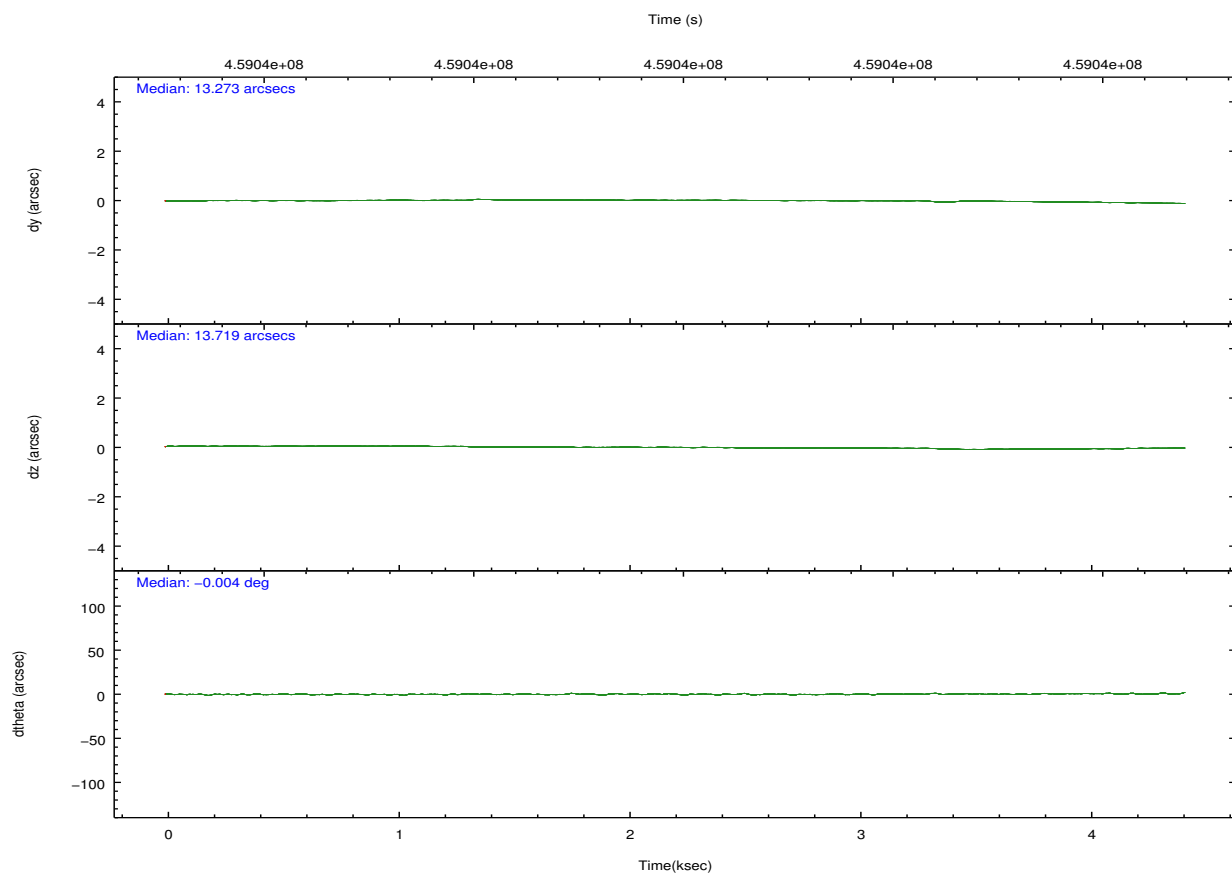
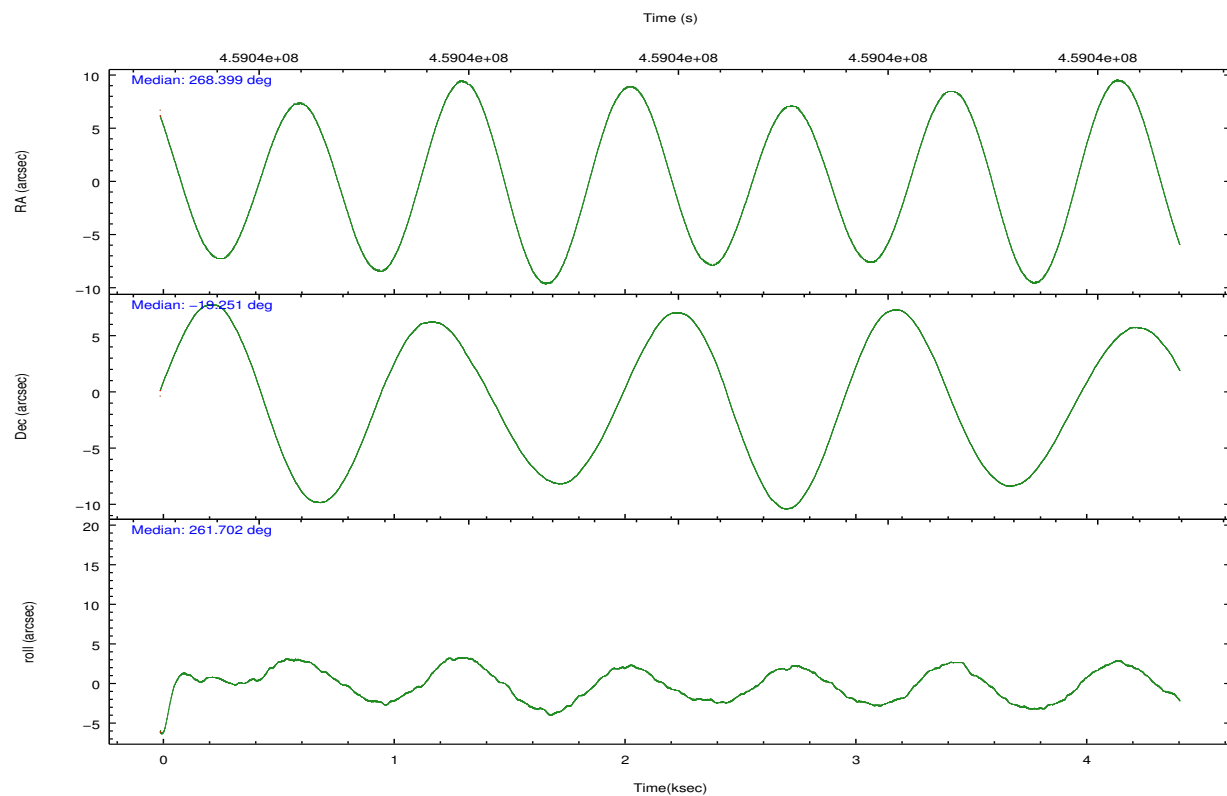
	ccd 2	ccd 3	ccd 5	ccd 6	ccd 7	ccd 8		ccd 2	ccd 3	ccd 5	ccd 6	ccd 7	ccd 8
level 1 events	26653	23059	35740	27432	27278	66258	grade 0 events	1625	1001	2271	2511	1301	13044
rejected events	22974	20577	17817	23045	14556	25420		6%	4%	6%	9%	4%	19%
rejected %	86%	89%	49%	84%	53%	38%	grade 1 events	17	10	117	14	56	109
								0%	0%	0%	0%	0%	0%
							grade 2 events	1025	552	5645	833	2953	5408
								3%	2%	15%	3%	10%	8%
							grade 3 events	231	244	821	249	1119	7634
								0%	1%	2%	0%	4%	11%
							grade 4 events	330	208	805	243	1090	6704
								1%	0%	2%	0%	3%	10%
							grade 5 events	879	999	2416	916	2648	1790
								3%	4%	6%	3%	9%	2%
							grade 6 events	471	482	8388	555	6271	8098
								1%	2%	23%	2%	22%	12%
							grade 7 events	22075	19563	15277	22111	11840	23471
								82%	84%	42%	80%	43%	35%

2.2 Compared Parameters

Parameter	Planned	Actual	Parameter	Planned	Actual
Instrument	ACIS	ACIS	Obspar format version number	7	7
Detector	ACIS-235678	ACIS-235678	Obspar file type	PREDICTED	ACTUAL
Grating	NONE	NONE	Obspar update status	NONE	UPDATED
Data mode	VFAINT	VFAINT	CCD I0 on	N	N
Observation mode	POINTING	POINTING	CCD I1 on	N	N
[deg] Pointing RA	268.388019	268.3991466945741	CCD I2 on	O1	Y
[deg] Pointing Dec	-19.226156	-19.25127598668036	CCD I3 on	O2	Y
[deg] Pointing Roll	261.546179	261.7064757511562	CCD S0 on	N	N
[mm] SIM focus pos	-0.684267	-0.6828225247311905	CCD S1 on	Y	Y
[mm] SIM defocus	0	0.001444936568705701	CCD S2 on	Y	Y
[mm] SIM translation stage pos	-190.132523	-190.1400660498719	CCD S3 on	Y	Y
[mm] SIM translation stage offset	0	0.00754346686406393	CCD S4 on	Y	Y
[s] Observation start time (MET)	459035657.184000	459034219.04634	CCD S5 on	N	N
Observation start date	2012-07-18T21:53:10	2012-07-18T21:30:19	Number of optional ACIS chips dropped	0	0
[s] Observation end time (MET)	459039157.184000	459039635.14662	On-chip summing requested	N	N
Observation end date	2012-07-18T22:51:30	2012-07-18T23:00:35	Subarray requested	NONE	NONE
Read mode	TIMED	TIMED	Alternating exposures requested	N	N
			[s] Primary exposure time	0.000000	3.2

2.3 Aspect



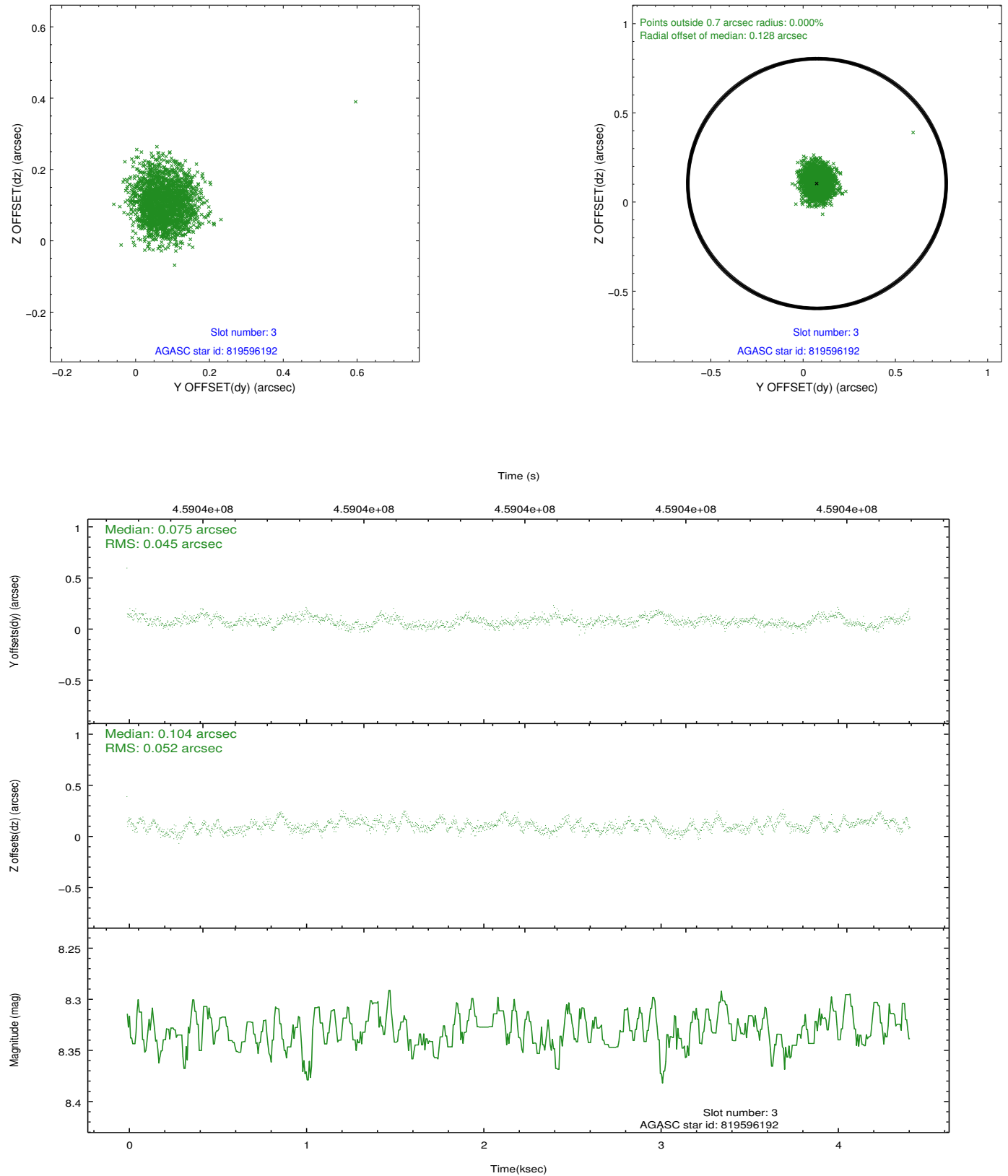


Slot Statistics

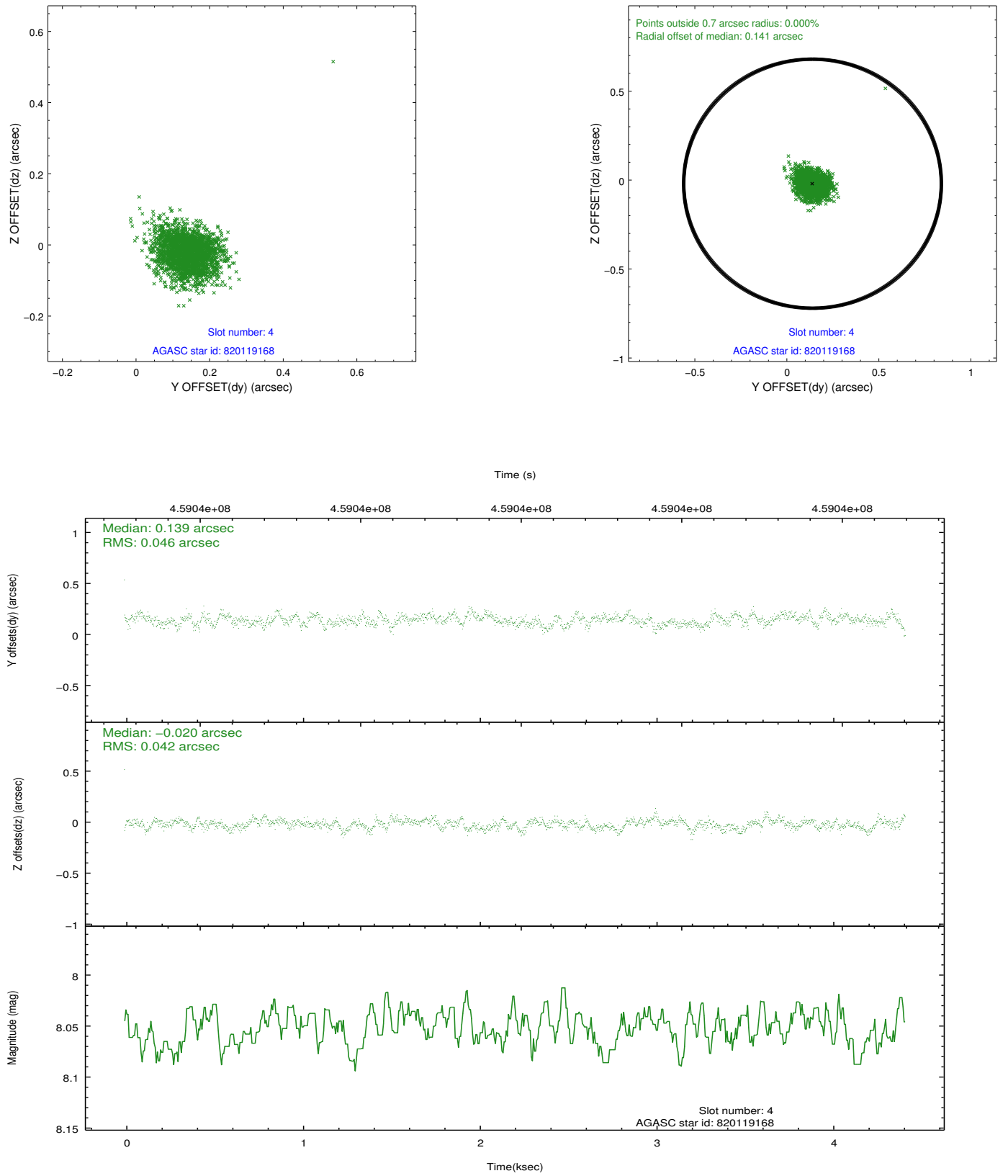
slot	status	id	mag	n_pts	med_dy	med_dz	dr1	dr2	ra	dec	mean_y	mean_z
0	FID	ACIS-S-2	6.95	1078	-0.051	-0.047	0.007	0.012	0.000000	0.000000	-766.23	-1735.11
1	FID	ACIS-S-4	7.03	1078	0.208	0.037	0.007	0.013	0.000000	0.000000	2146.66	172.02
2	FID	ACIS-S-5	7.07	1078	-0.188	0.018	0.007	0.013	0.000000	0.000000	-1817.42	167.24
3	GUIDE	819596192	8.33	2156	0.075	0.104	0.073	0.117	267.914402	-18.724742	-1544.93	-1862.23
4	GUIDE	820119168	8.05	2156	0.139	-0.020	0.065	0.105	267.932854	-19.779597	2201.43	-1232.68
5	GUIDE	820253896	6.93	2156	-0.082	-0.081	0.053	0.090	268.446257	-19.887246	2326.82	544.60
6	GUIDE	820255304	8.26	2150	-0.067	0.161	0.074	0.114	268.341279	-18.875972	-1221.71	-342.40
7	GUIDE	820257360	9.18	2154	-0.068	-0.158	0.095	0.160	269.095984	-19.149637	-621.65	2341.46

2.4 Star Slots

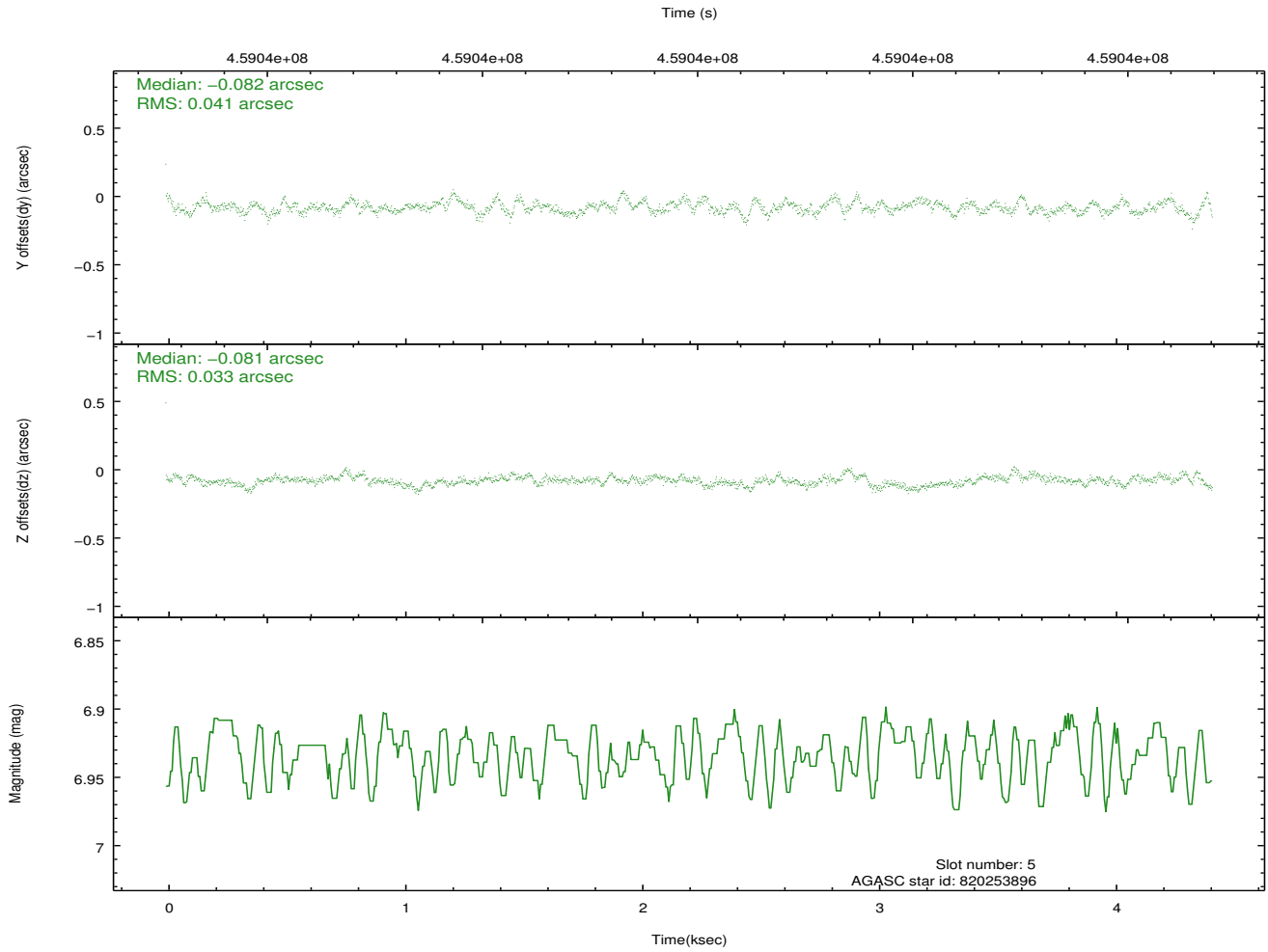
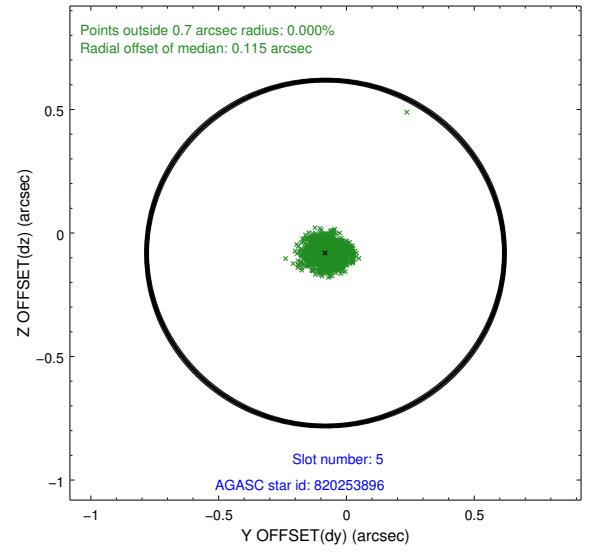
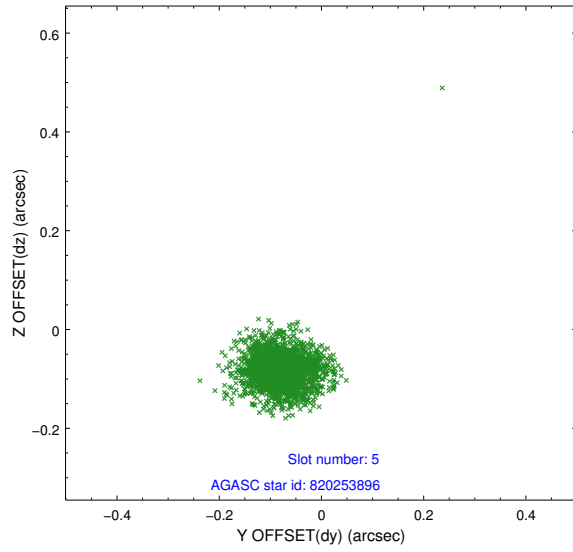
2.4.1 Slot 3



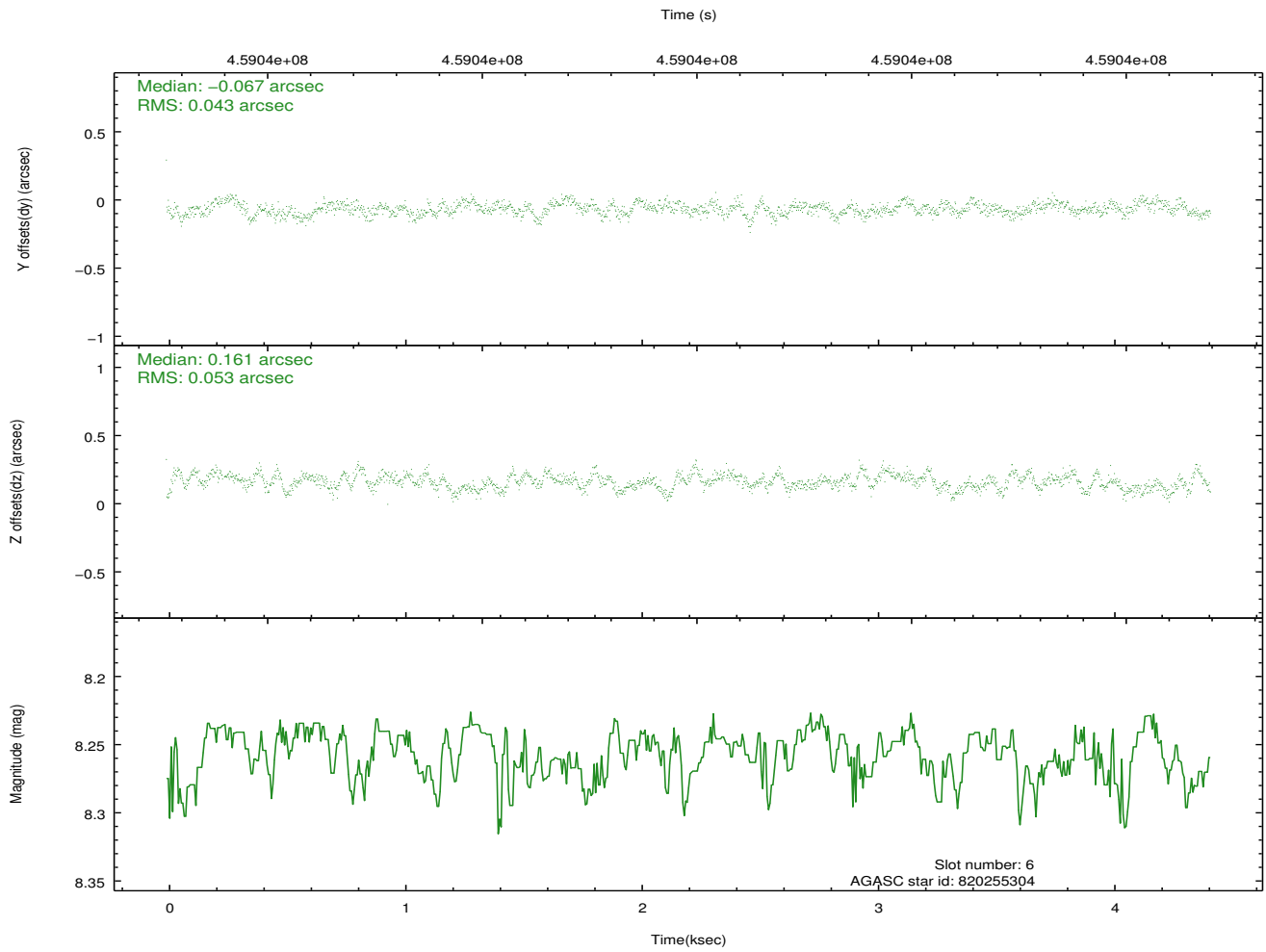
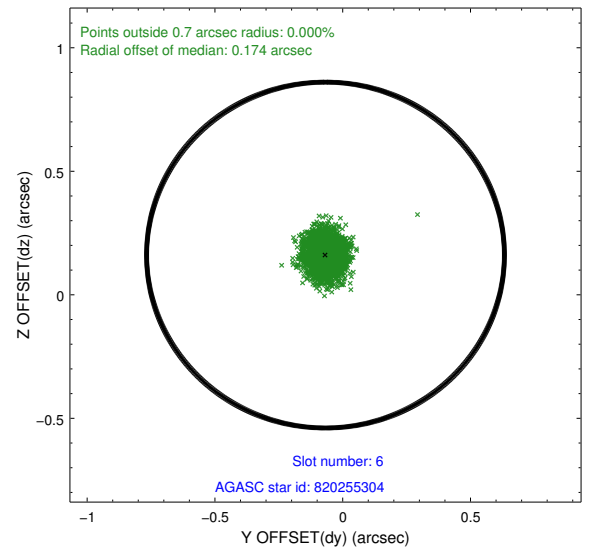
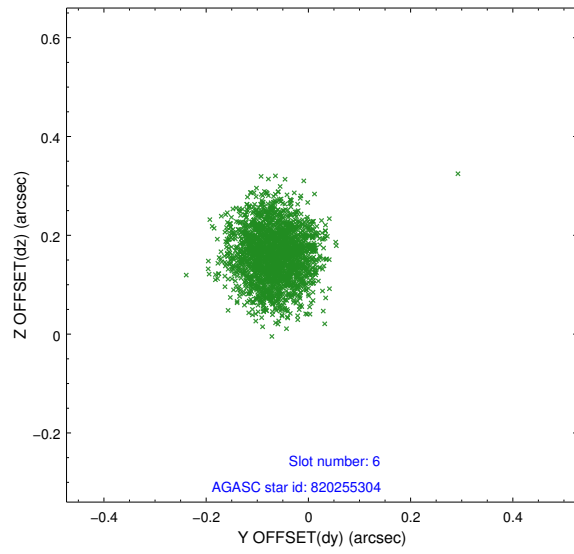
2.4.2 Slot 4



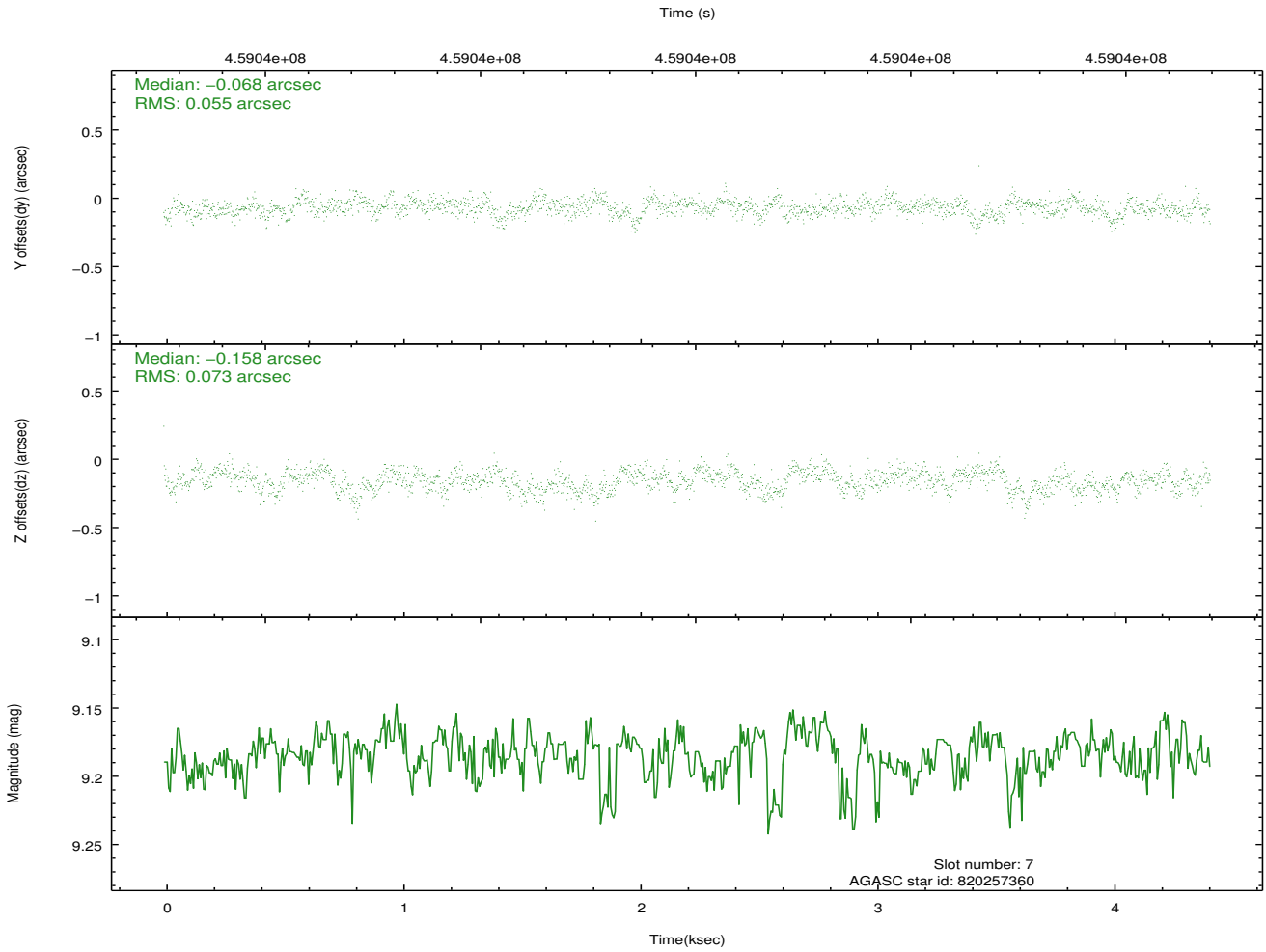
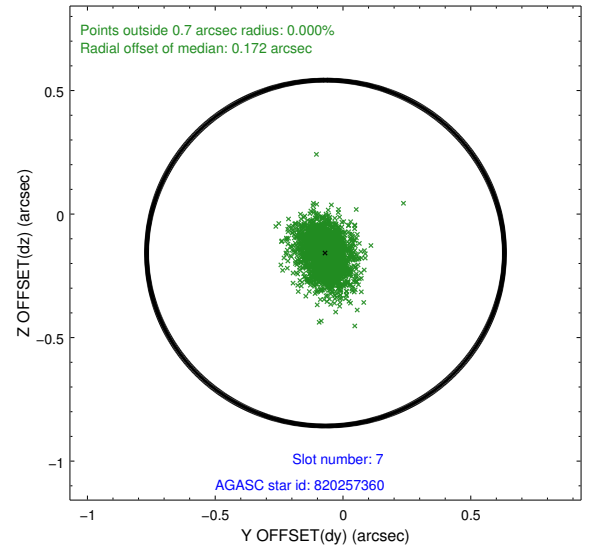
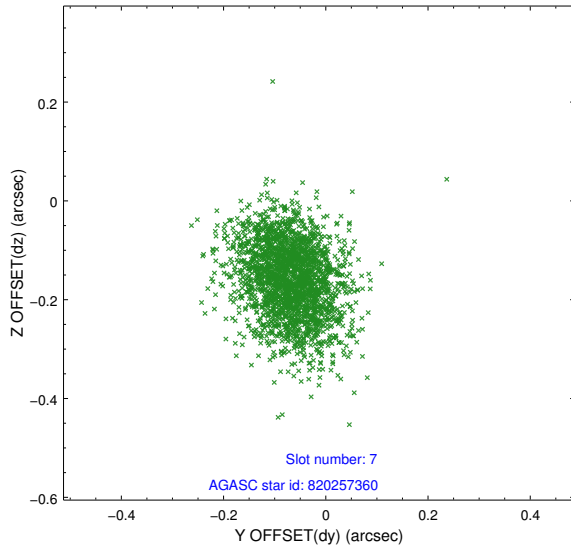
2.4.3 Slot 5



2.4.4 Slot 6

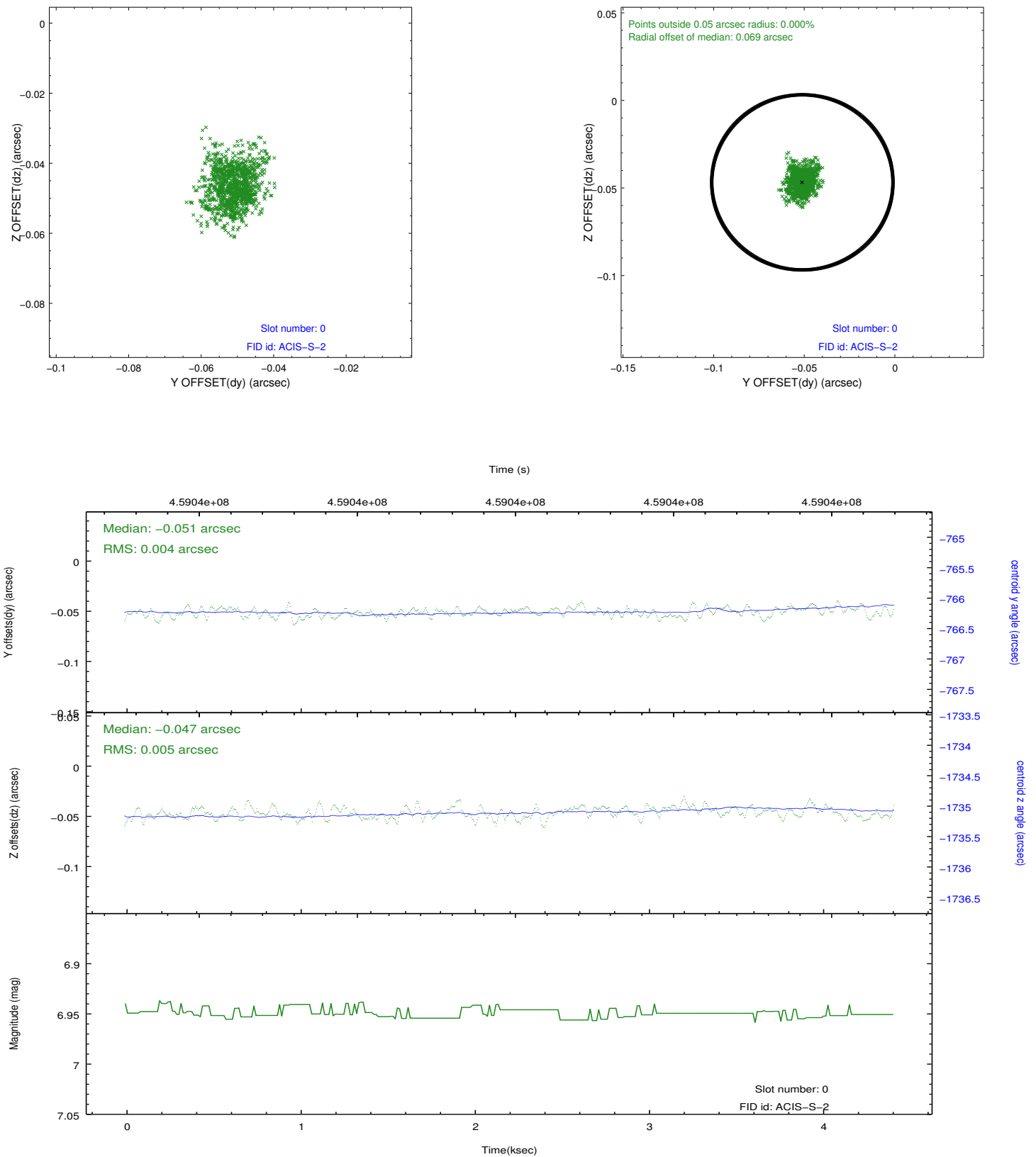


2.4.5 Slot 7

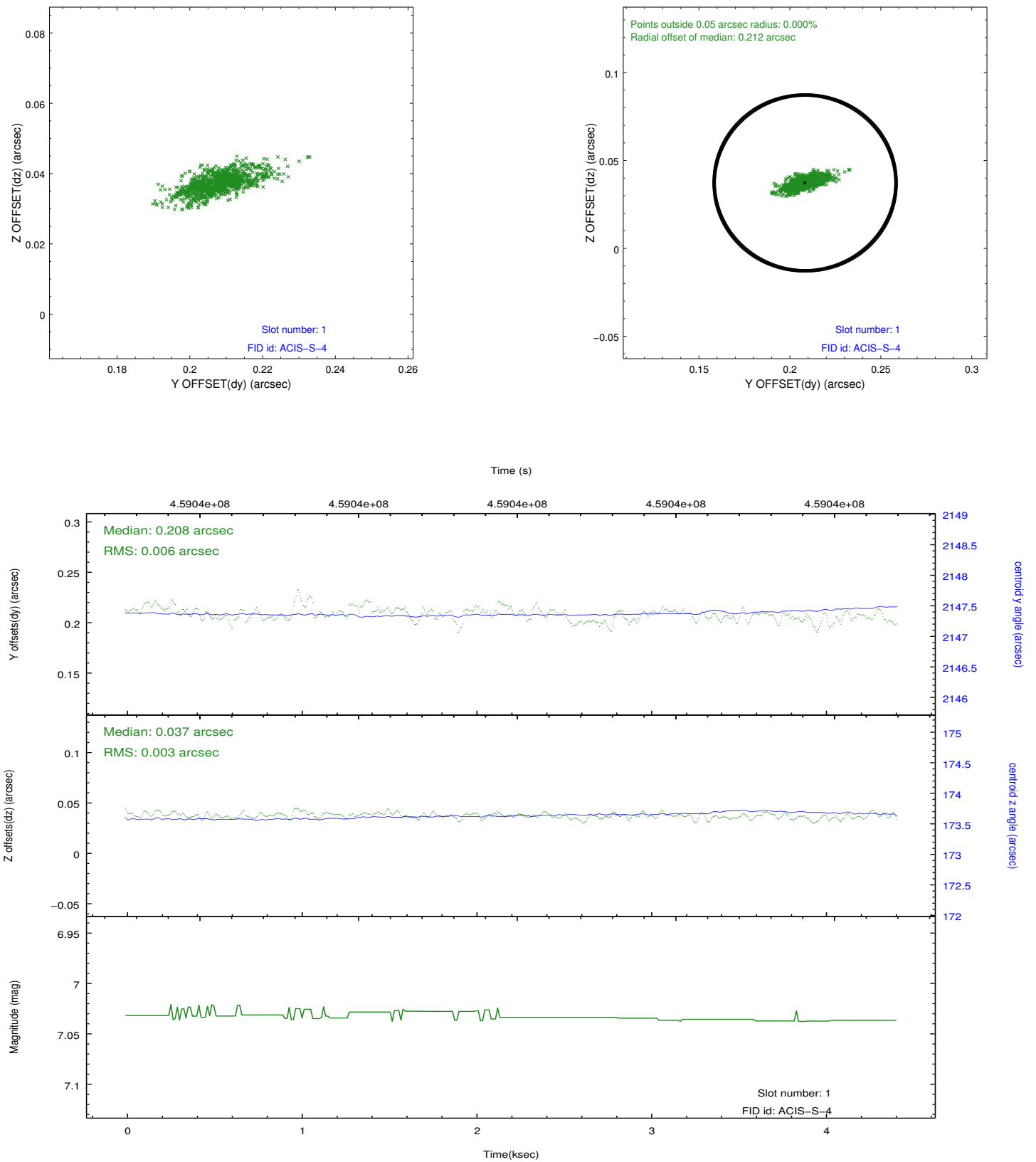


2.5 FID Slots

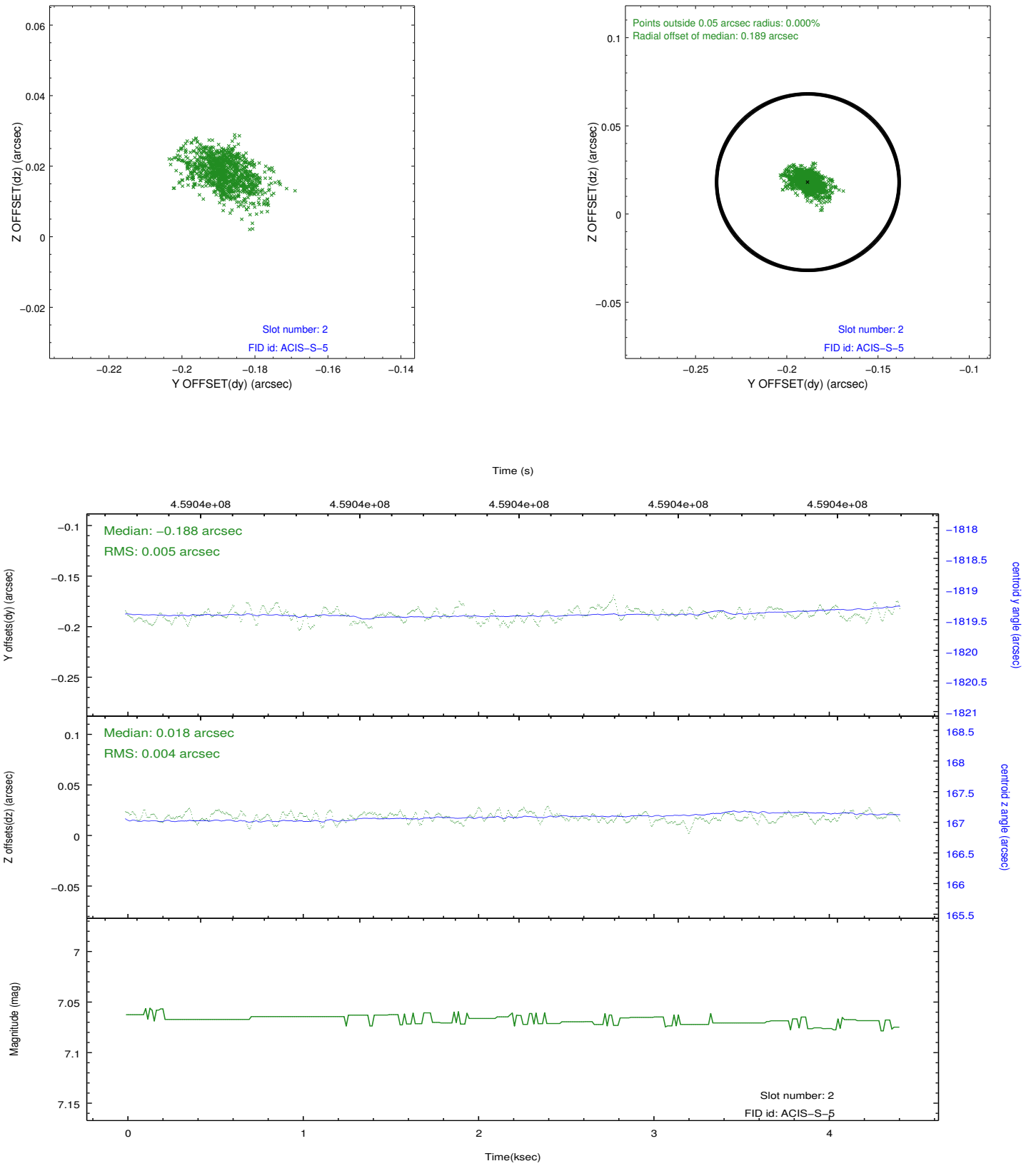
2.5.1 Slot 0



2.5.2 Slot 1



2.5.3 Slot 2



A Summary

A.1 Status

V&V Scientist	Jen Lauer
V&V Date (YYYY-MM-DD)	2012.07.25
V&V Edition	1
V&V Disposition and Status	OK
V&V Charge Time	3.46451690799

A.2 Comments

A spatial region of the original bias map for CCD = 3 suffered from anomalously high data values. Pixels in the event data that were bias-corrected by one of the original affected bias pixels may have an apparent energy shift. While the change in energy is expected to be small (~ 20 eV), it depends on many parameters that have not yet been fully explored for this bias anomaly. The bias map for CCD = 3 has been reconstructed for this processing to remove this anomaly using scaled data from a comparable bias map from another observation. The pixels affected by the anomaly are bounded by sky coords:
(268.23135, -19.08754), (268.22493, -19.08664), (268.22016, -19.11740), (268.22564, -19.12437)