

V&V Reference Report

L2 ASCDS Version : 8.4.5

Observation 13793 - L2 Version 1
Chandra X-Ray Center

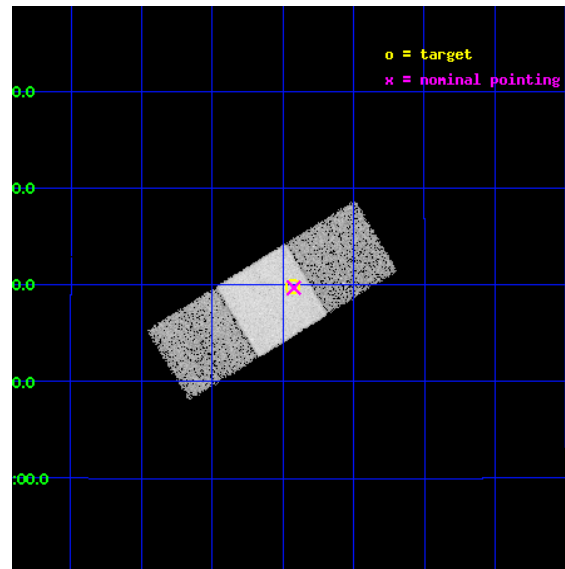
L2 Processing Date : Jun 12 2012

Contents

1	Front	2
2	OBI	3
2.1	OBI	3
2.1.1	Images	3
2.1.2	Bias	3
2.1.3	Parameters	4
2.1.4	Events	4
2.2	Compared Parameters	5
2.3	Aspect	6
2.4	Star Slots	9
2.4.1	Slot 3	9
2.4.2	Slot 4	10
2.4.3	Slot 5	11
2.4.4	Slot 6	12
2.4.5	Slot 7	13
2.5	FID Slots	14
2.5.1	Slot 0	14
2.5.2	Slot 1	15
2.5.3	Slot 2	16
A	Summary	17
A.1	Status	17
A.2	Comments	17

1 Front

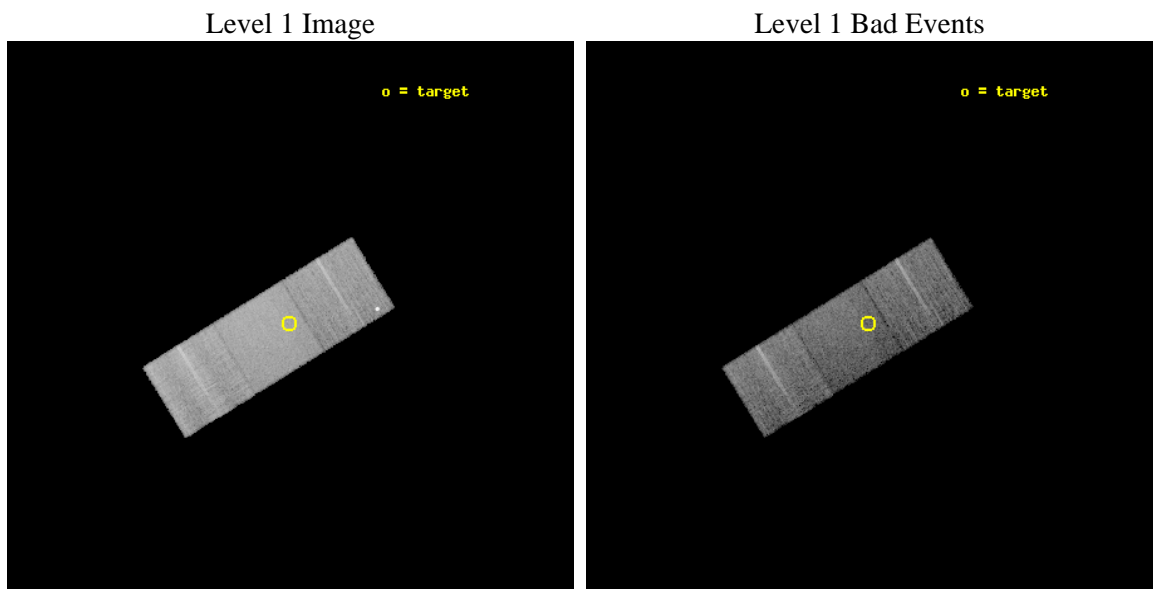
seq_num	501625	Sequence number
obs_id	13793	Observation id
title	Search for X-ray counterparts of Fermi LAT radio-quiet gamma-ray pulsars	Proposal title
observer	Dr. Pablo Saz Parkinson	Principal investigator
object	PSR J1846+0919	Source name
dtcycle	0	
cycle	P	events from which exps? Prim/Second/Both
ra_targ	281.608333	Observer's specified target RA [deg]
dec_targ	9.329444	Observer's specified target Dec [deg]
ra_nom	281.60557559717	Nominal RA [deg]
dec_nom	9.3280955644834	Nominal Dec [deg]
roll_nom	148.33540997299	Nominal Roll [deg]
revision	1	Processing version of data
ontime	15115.600116253	Sum of GTIs [s]
livetime	14918.103672791	Livetime [s]
ontime6	15115.600116253	Sum of GTIs [s]
ontime7	15115.600116253	Sum of GTIs [s]
ontime8	15115.600116253	Sum of GTIs [s]
l2events	68555	Number of level 2 events



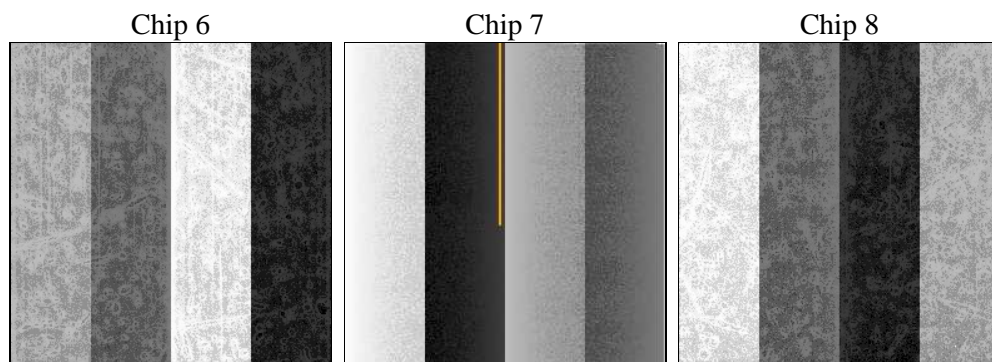
2 OBI

2.1 OBI

2.1.1 Images



2.1.2 Bias



2.1.3 Parameters

obi_num	0	Obi number	sched_exp_time	15000.000000	[s] Scheduled observation exposure time
ascdsver	8.4.5	Processing system revision	ontime	15115.600116253	Sum of GTIs [s]
caldsver	4.4.10	 	ontime6	15115.600116253	Sum of GTIs [s]
date	2012-06-12T20:13:10	Date and time of file creation	ontime7	15115.600116253	Sum of GTIs [s]
revision	1	Processing version of data	ontime8	15115.600116253	Sum of GTIs [s]
			l1events	316321	Number of level 1 events

2.1.4 Events

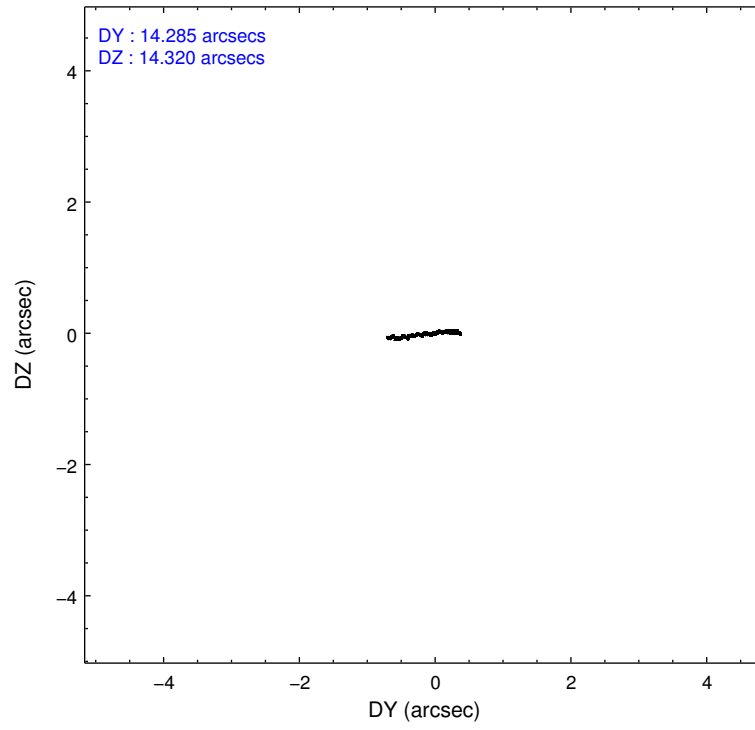
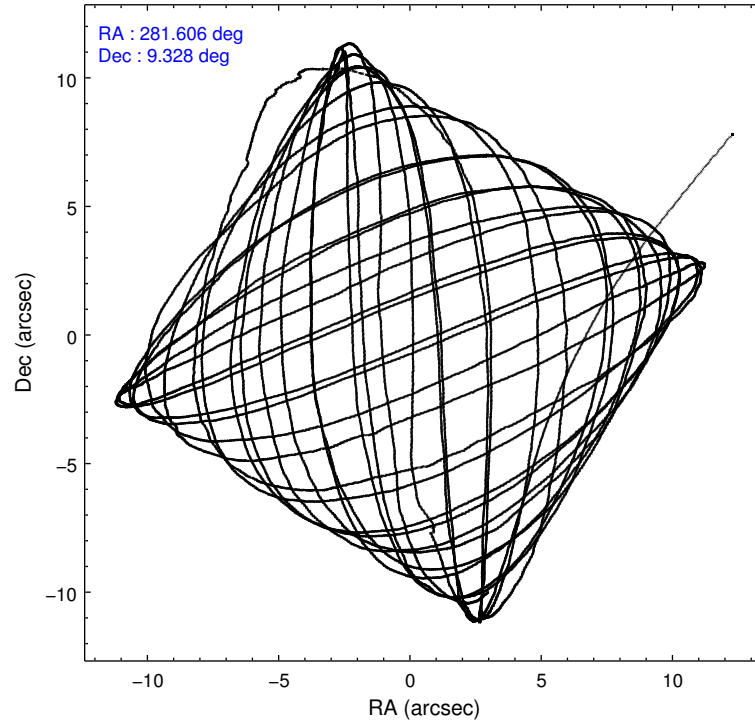
	ccd 6	ccd 7	ccd 8
level 1 events	87515	112960	115846
rejected events	73823	62655	84617
rejected %	84%	55%	73%

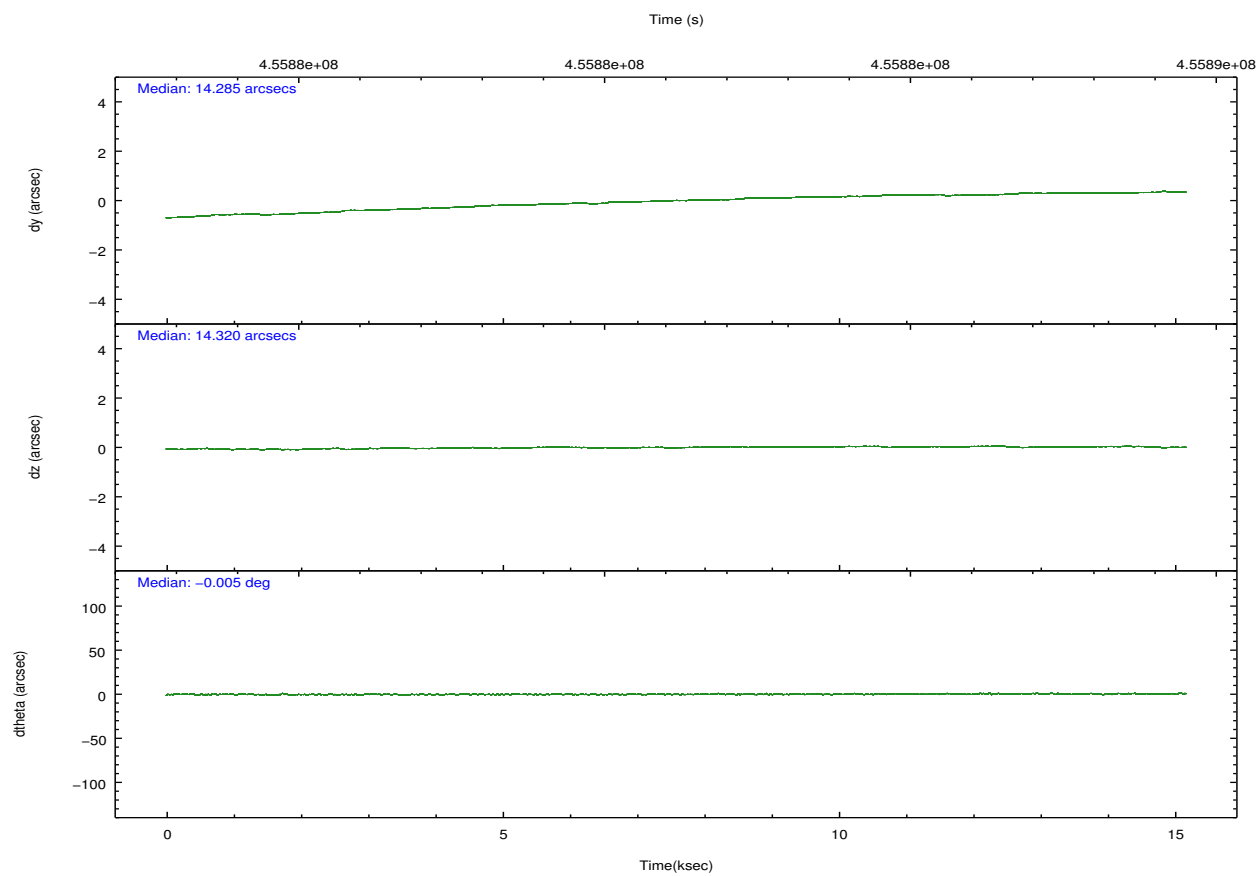
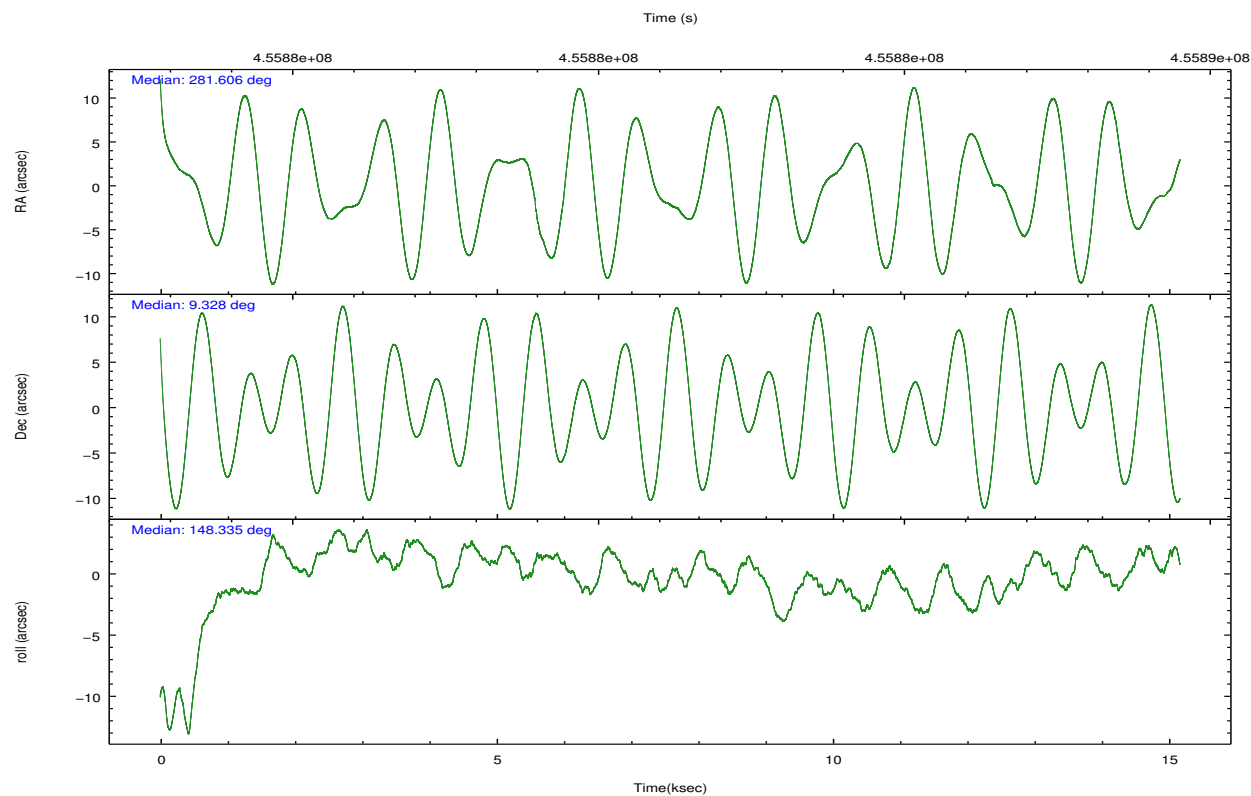
	ccd 6	ccd 7	ccd 8
grade 0 events	6734	4508	9390
	7%	3%	8%
grade 1 events	59	133	96
	0%	0%	0%
grade 2 events	2438	10397	7094
	2%	9%	6%
grade 3 events	1124	4461	3320
	1%	3%	2%
grade 4 events	1084	4355	3176
	1%	3%	2%
grade 5 events	4317	11663	6325
	4%	10%	5%
grade 6 events	2320	26611	8254
	2%	23%	7%
grade 7 events	69439	50832	78191
	79%	45%	67%

2.2 Compared Parameters

Parameter	Planned	Actual	Parameter	Planned	Actual
Instrument	ACIS	ACIS	Obspar format version number	7	7
Detector	ACIS-678	ACIS-678	Obspar file type	PREDICTED	ACTUAL
Grating	NONE	NONE	Obspar update status	NONE	UPDATED
Data mode	VFAINT	VFAINT	Number of optional ACIS chips dropped	0	0
Observation mode	POINTING	POINTING	On-chip summing requested	N	N
[deg] Pointing RA	281.633275	281.6055755971709	Subarray requested	NONE	NONE
[deg] Pointing Dec	9.327704	9.32809556448335	Alternating exposures requested	N	N
[deg] Pointing Roll	148.174286	148.3354099729874	[s] Primary exposure time	0.000000	3.1
[mm] SIM focus pos	-0.684267	-0.6828225247311905			
[mm] SIM defocus	0	0.001444936568705701			
[mm] SIM translation stage pos	-190.132523	-190.1400660498719			
[mm] SIM translation stage offset	0	0.00754346686406393			
[s] Observation start time (MET)	455873752.184000	455872664.29022			
Observation start date	2012-06-12T07:34:46	2012-06-12T07:17:44			
[s] Observation end time (MET)	455888752.184000	455889651.61612			
Observation end date	2012-06-12T11:44:46	2012-06-12T12:00:51			
Read mode	TIMED	TIMED			

2.3 Aspect



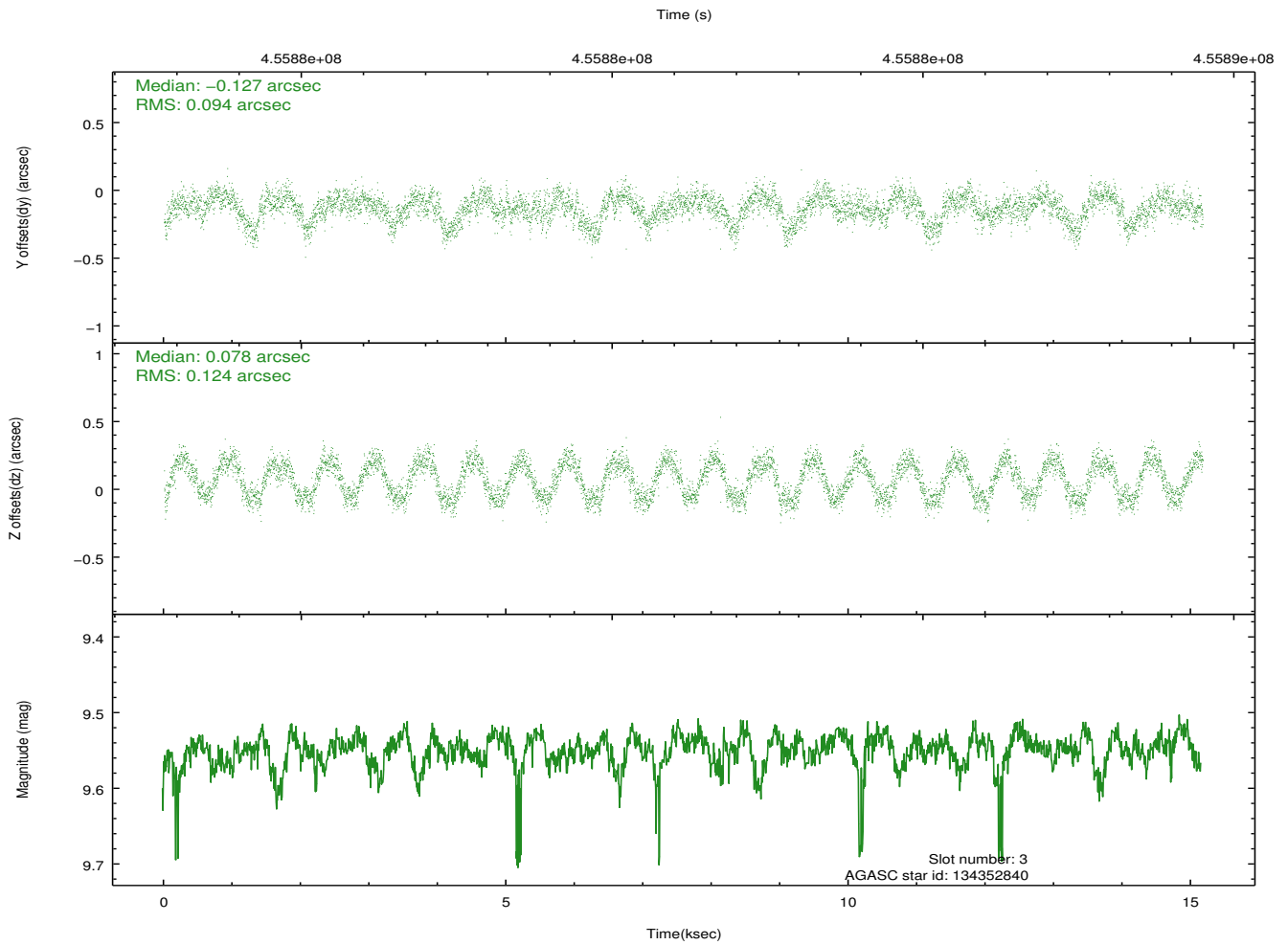
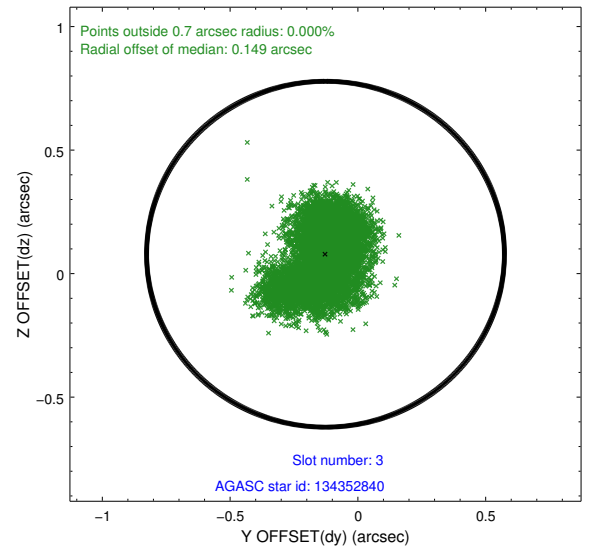
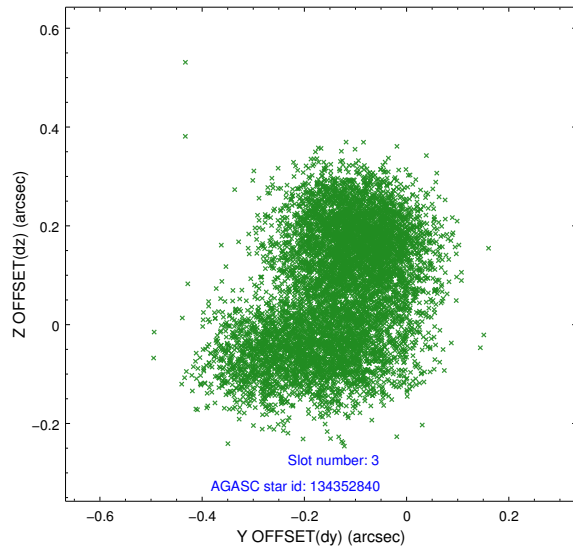


Slot Statistics

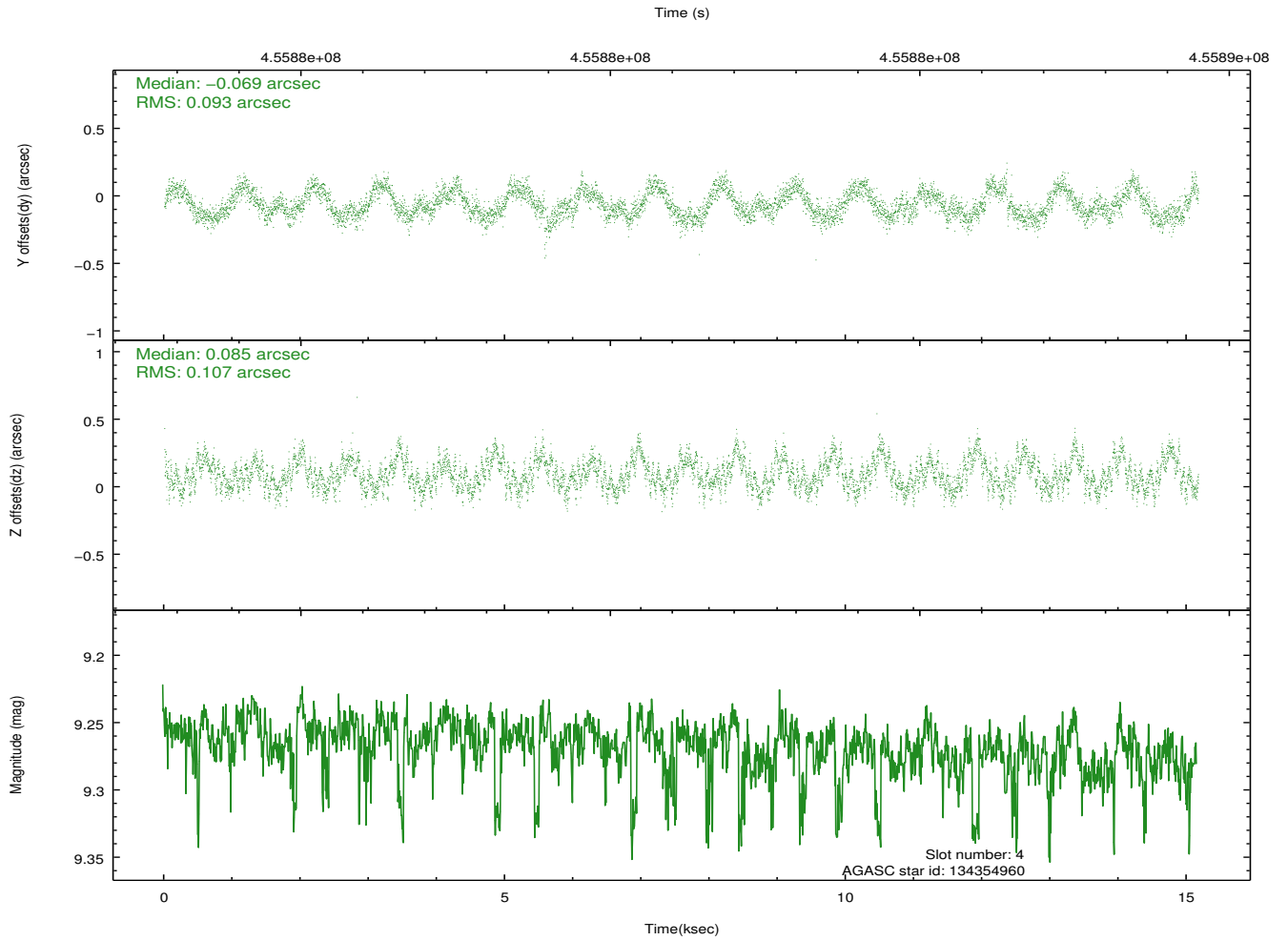
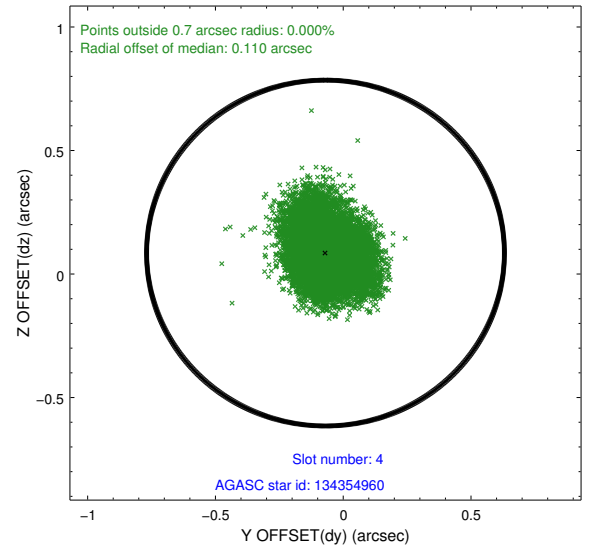
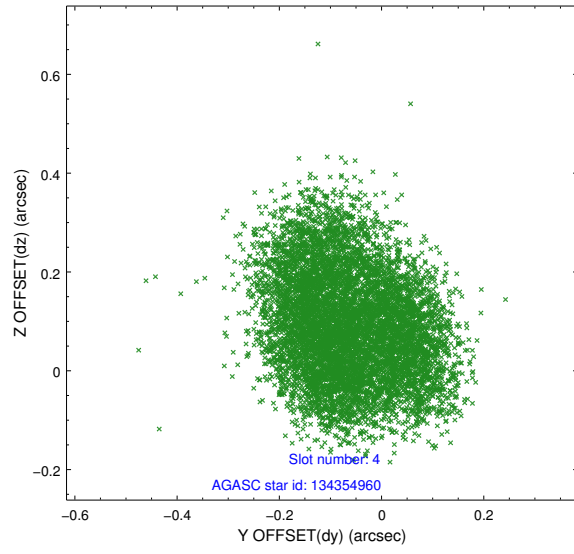
slot	status	id	mag	n_pts	med_dy	med_dz	dr1	dr2	ra	dec	mean_y	mean_z
0	FID	ACIS-S-1	7.00	3700	0.044	-0.026	0.011	0.020	0.000000	0.000000	928.91	-1731.33
1	FID	ACIS-S-4	7.00	3700	0.213	0.002	0.011	0.024	0.000000	0.000000	2146.64	172.56
2	FID	ACIS-S-5	7.03	3700	-0.283	0.037	0.008	0.015	0.000000	0.000000	-1819.92	166.50
3	GUIDE	134352840	9.55	7380	-0.127	0.078	0.169	0.254	281.060002	9.367640	1806.85	950.47
4	GUIDE	134354960	9.27	7383	-0.069	0.085	0.153	0.232	281.411418	8.948257	-49.52	1576.81
5	GUIDE	134481280	9.06	7395	0.070	0.029	0.091	0.148	281.757003	8.942890	-1104.12	945.31
6	GUIDE	134483600	9.33	7360	0.199	-0.091	0.139	0.219	281.712347	9.087957	-693.73	585.22
7	GUIDE	134887800	9.12	7376	-0.057	-0.095	0.118	0.179	281.112359	9.615603	2118.29	93.80

2.4 Star Slots

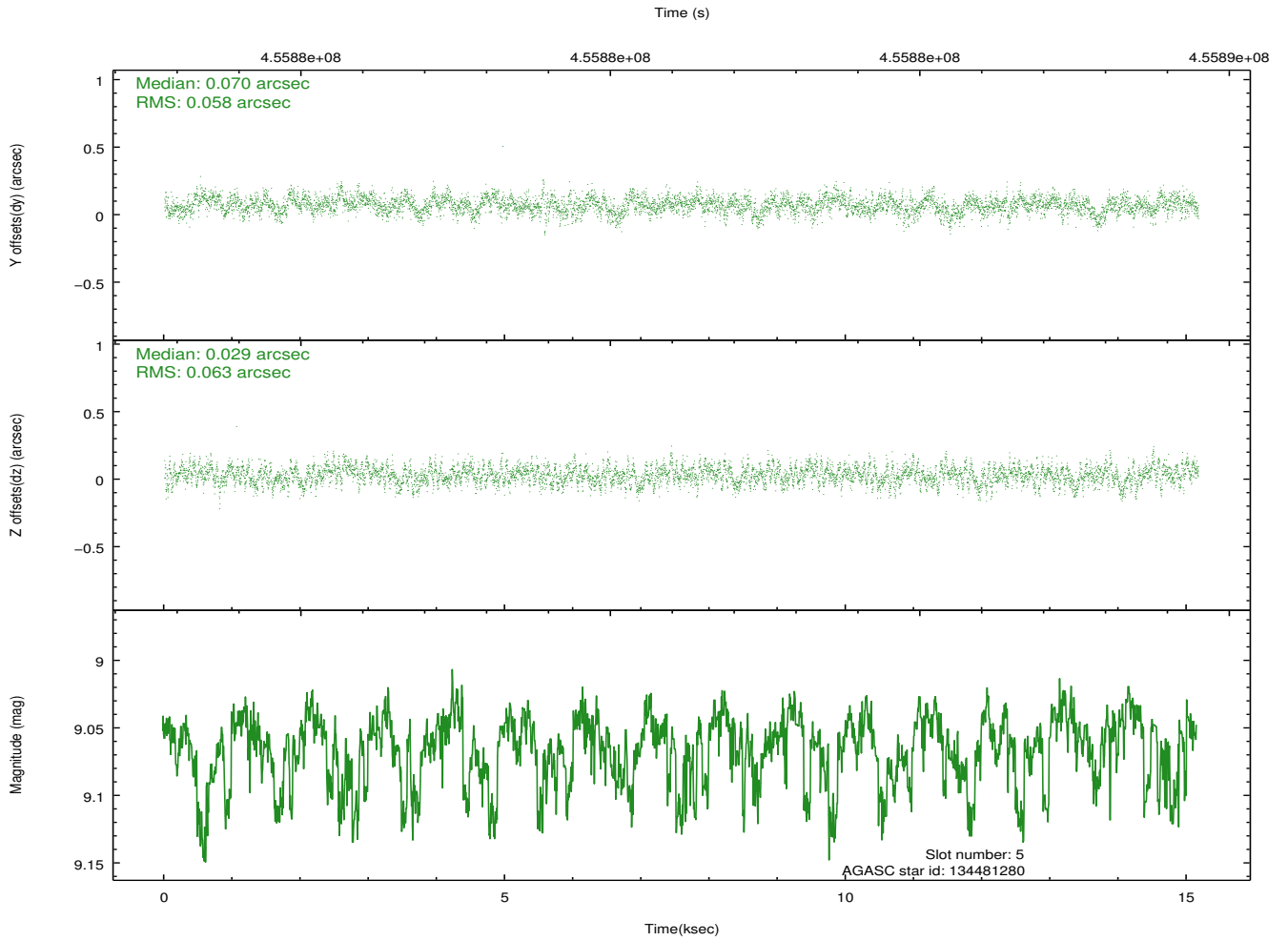
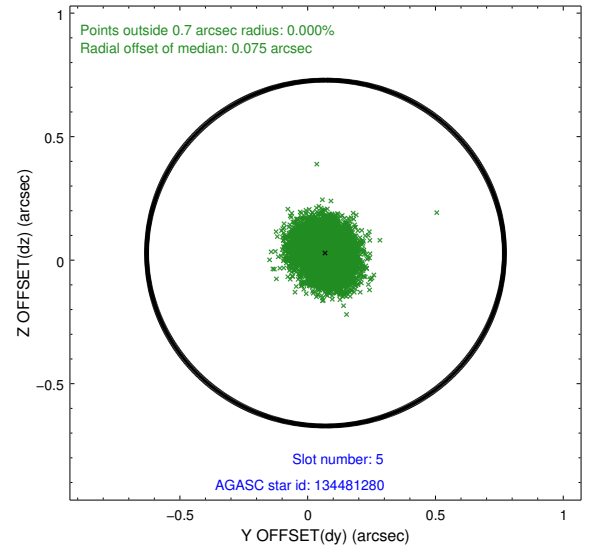
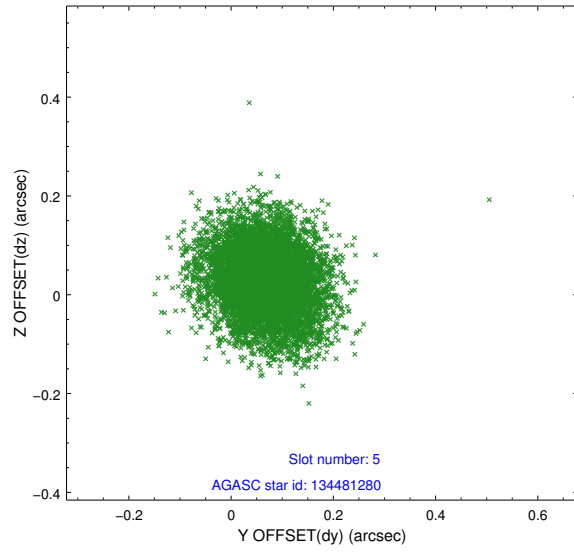
2.4.1 Slot 3



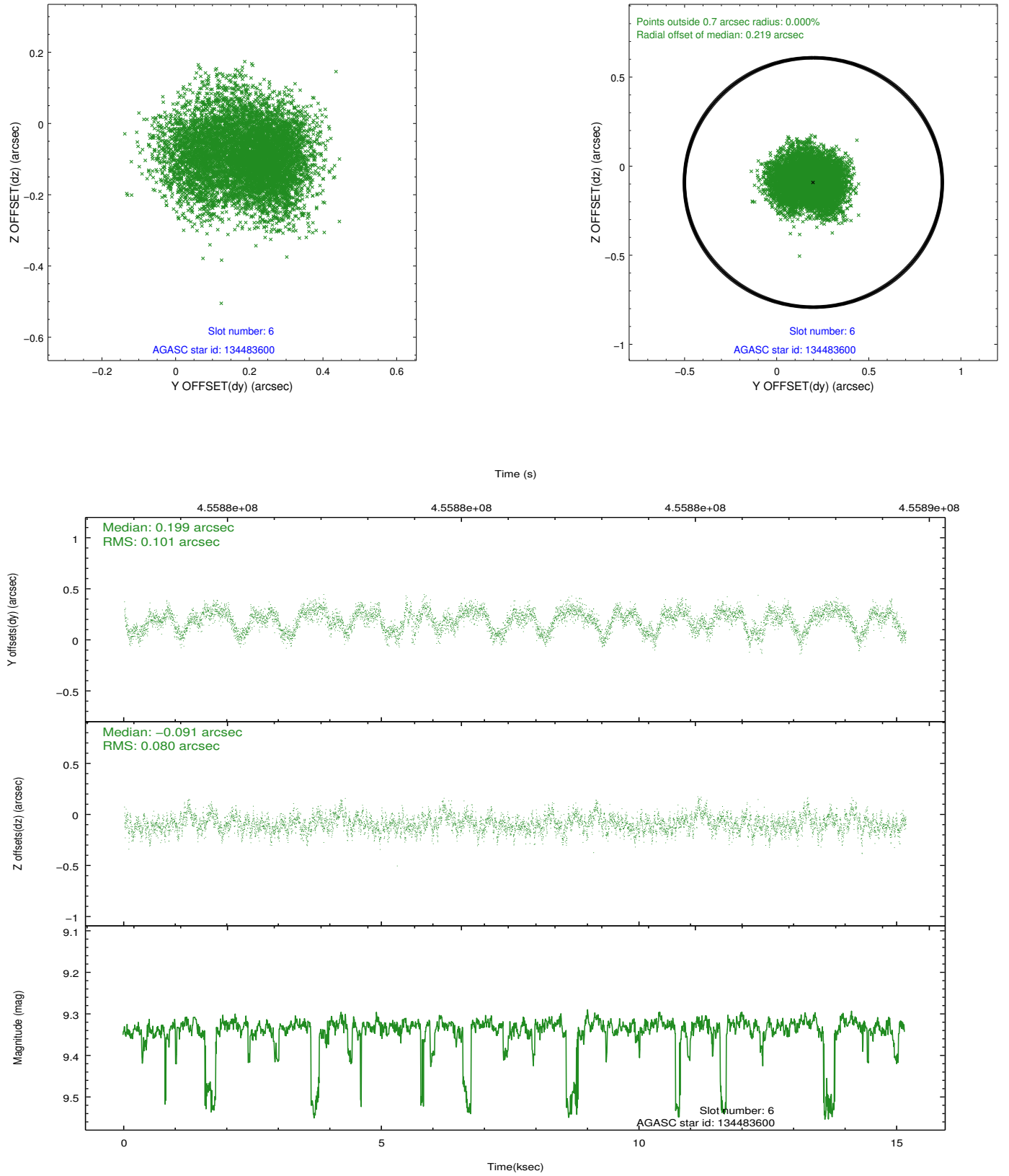
2.4.2 Slot 4



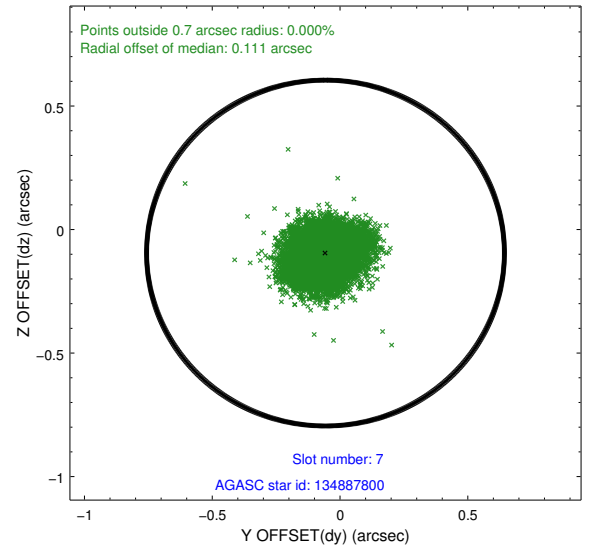
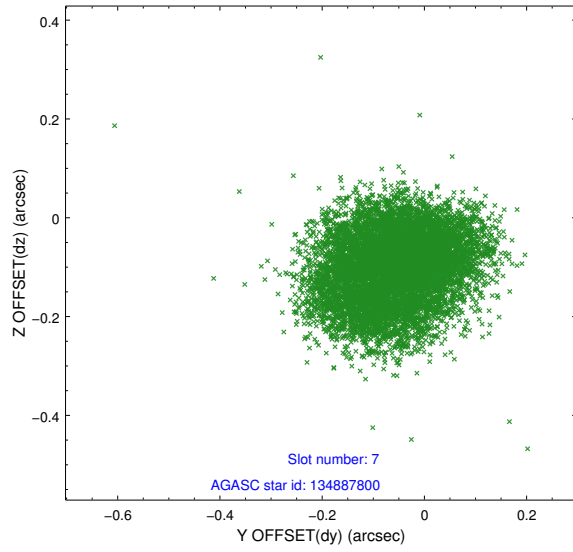
2.4.3 Slot 5



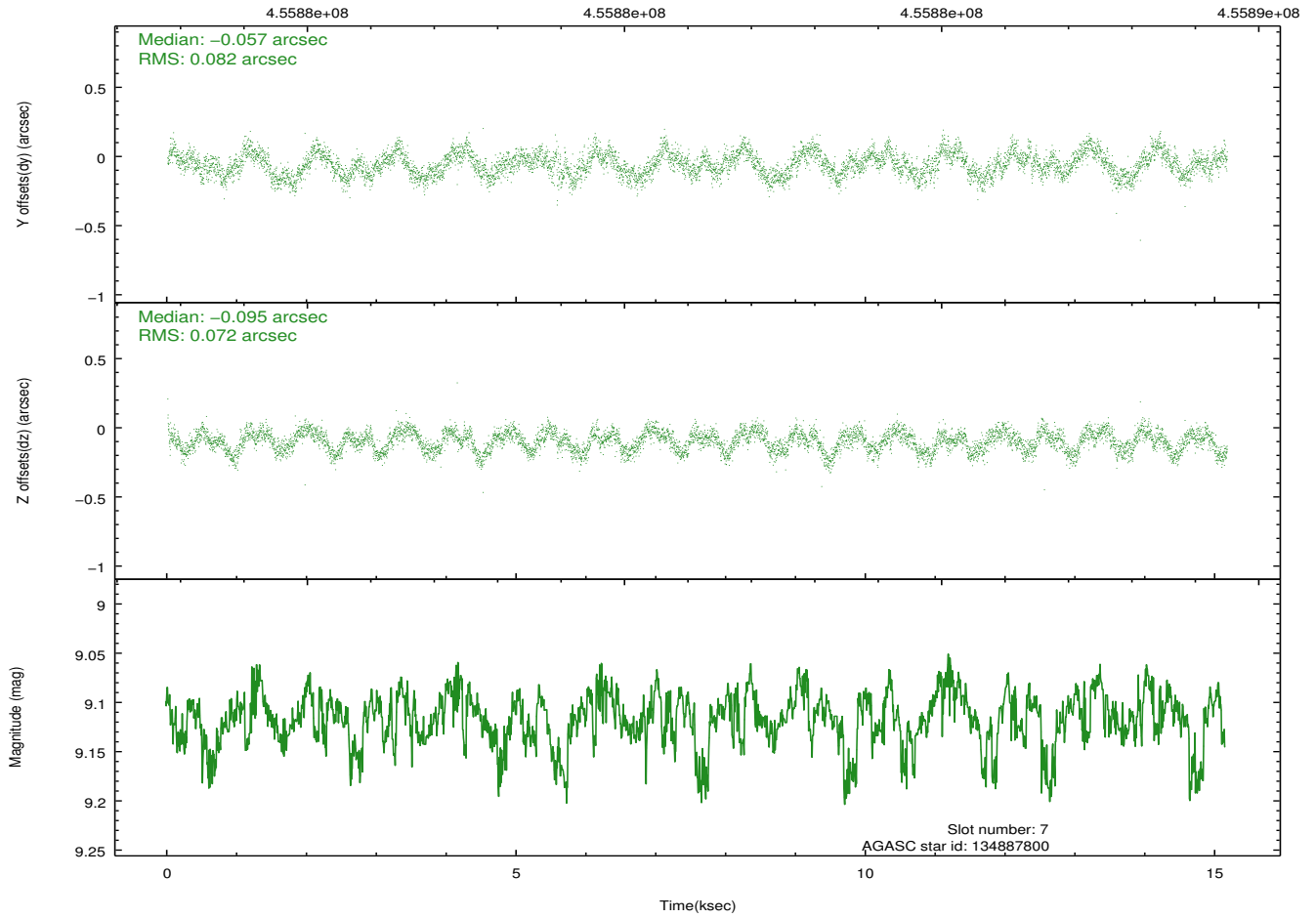
2.4.4 Slot 6



2.4.5 Slot 7

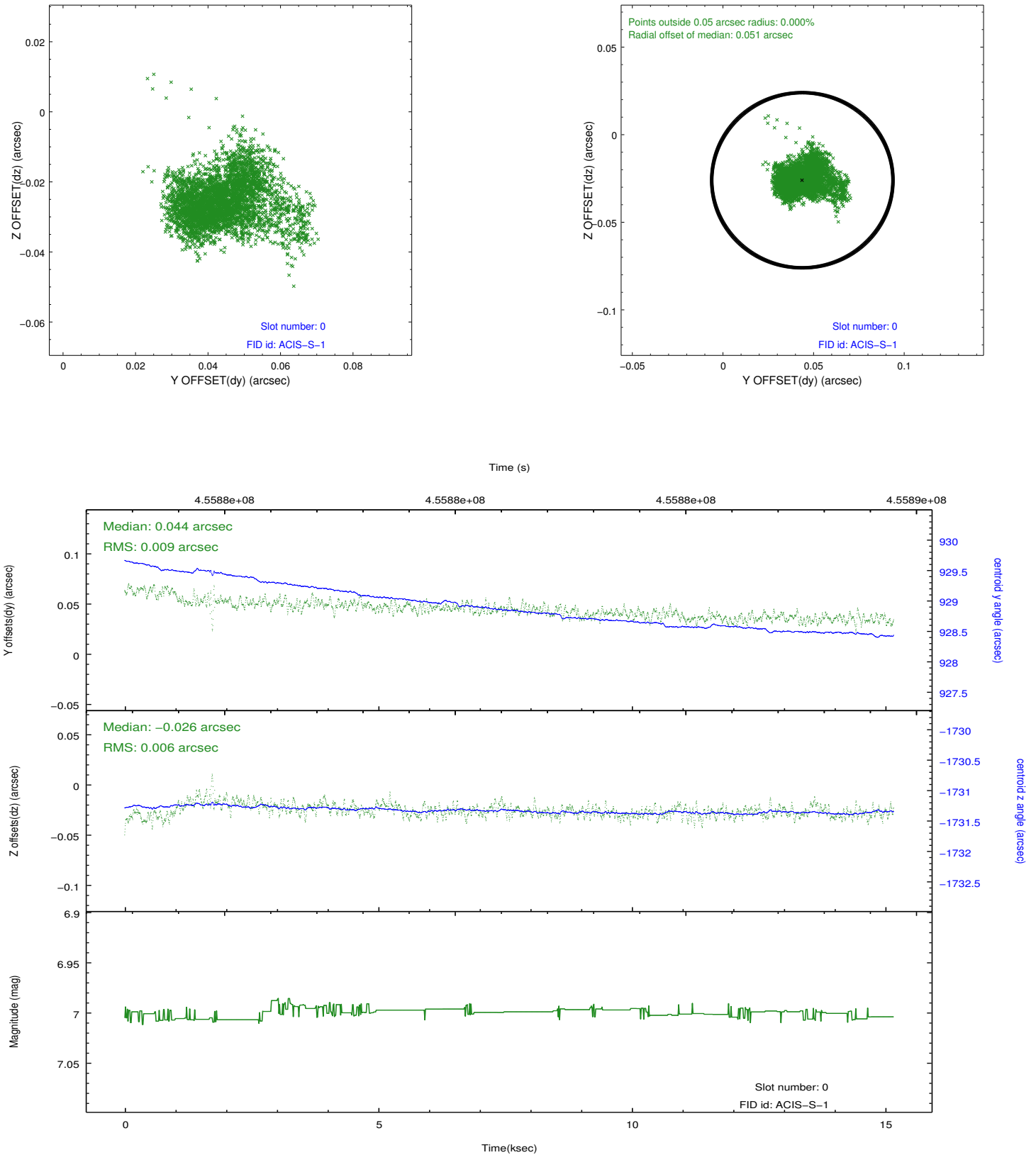


Time (s)

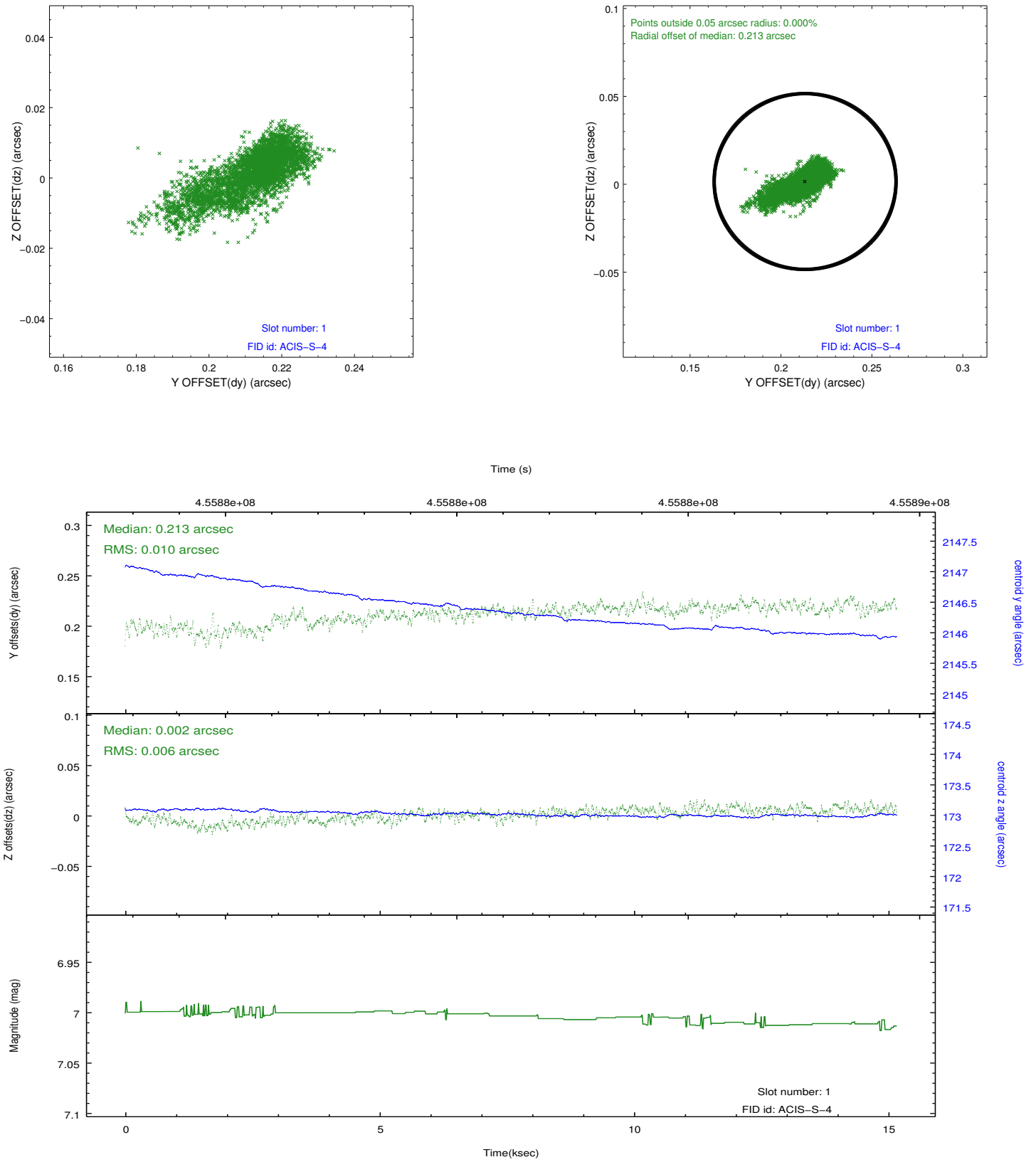


2.5 FID Slots

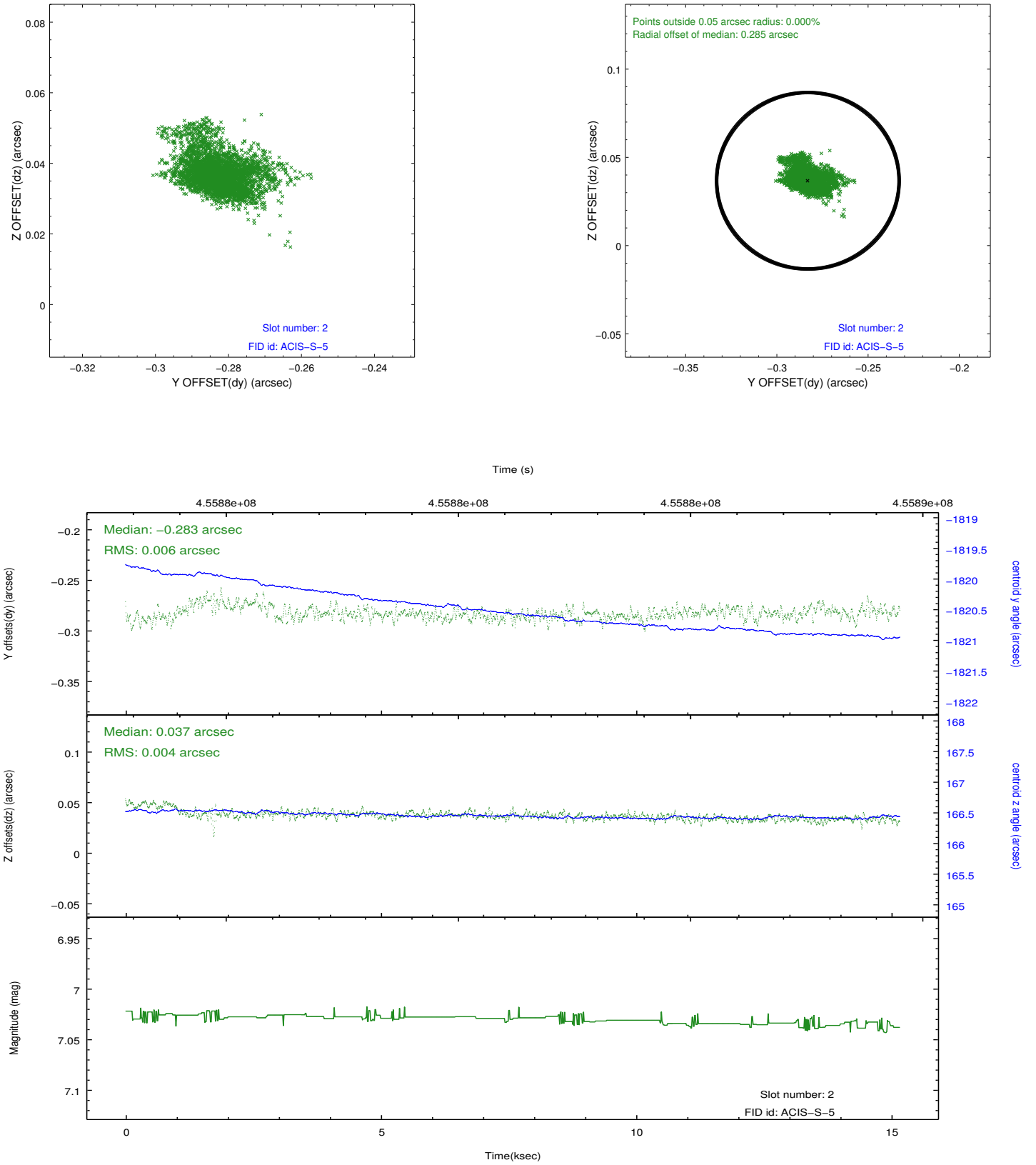
2.5.1 Slot 0



2.5.2 Slot 1



2.5.3 Slot 2



A Summary

A.1 Status

V&V Scientist	Joy Nichols
V&V Date (YYYY-MM-DD)	2012.06.13
V&V Edition	1
V&V Disposition and Status	OK
V&V Charge Time	15.115600116253

A.2 Comments