

# V&V Reference Report

## L2 ASCDS Version : 8.4.3

Observation 13285 - L2 Version 1  
Chandra X-Ray Center

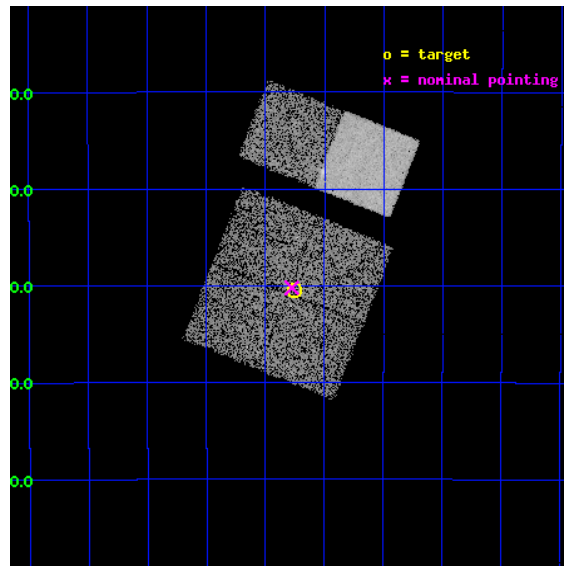
L2 Processing Date : Mar 27 2012

## Contents

<b>1</b>	<b>Front</b>	<b>2</b>
<b>2</b>	<b>OBI</b>	<b>3</b>
2.1	OBI . . . . .	3
2.1.1	Images . . . . .	3
2.1.2	Bias . . . . .	3
2.1.3	Parameters . . . . .	4
2.1.4	Events . . . . .	4
2.2	Compared Parameters . . . . .	5
2.3	Aspect . . . . .	6
2.4	Star Slots . . . . .	9
2.4.1	Slot 3 . . . . .	9
2.4.2	Slot 4 . . . . .	10
2.4.3	Slot 5 . . . . .	11
2.4.4	Slot 6 . . . . .	12
2.4.5	Slot 7 . . . . .	13
2.5	FID Slots . . . . .	14
2.5.1	Slot 0 . . . . .	14
2.5.2	Slot 1 . . . . .	15
2.5.3	Slot 2 . . . . .	16
<b>A</b>	<b>Summary</b>	<b>17</b>
A.1	Status . . . . .	17
A.2	Comments . . . . .	17

# 1 Front

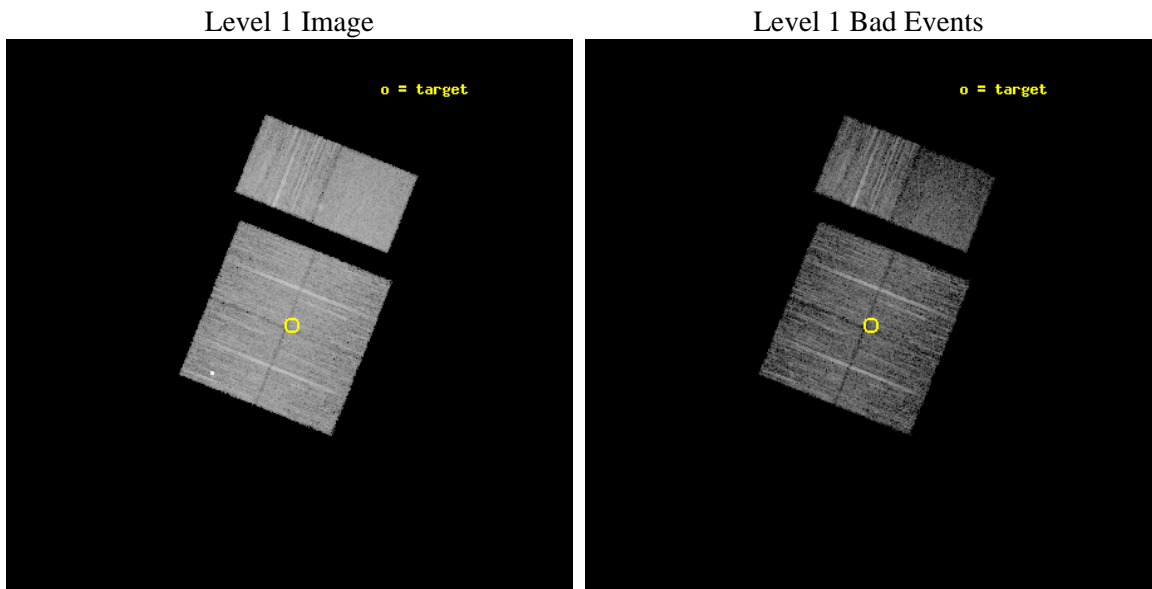
seq_num	501553	Sequence number
obs_id	13285	Observation id
title	Snap-shot survey of new galactic gamma-ray sources	Proposal title
observer	Professor Gordon Garmire	Principal investigator
object	1FGL J1311.7-3429	Source name
dtcycle	0	&#160
cycle	P	events from which exps? Prim/Second/Both
ra_targ	197.939167	Observer's specified target RA [deg]
dec_targ	-34.508	Observer's specified target Dec [deg]
ra_nom	197.94399432101	Nominal RA [deg]
dec_nom	-34.503841679513	Nominal Dec [deg]
roll_nom	21.721640706185	Nominal Roll [deg]
revision	1	Processing version of data
ontime	9967.9999629259	Sum of GTIs [s]
livetime	9841.7791453864	Livetime [s]
ontime0	9967.9999629259	Sum of GTIs [s]
ontime1	9967.9999629259	Sum of GTIs [s]
ontime2	9967.9999629259	Sum of GTIs [s]
ontime3	9967.9999629259	Sum of GTIs [s]
ontime6	9967.9999629259	Sum of GTIs [s]
ontime7	9967.9999629259	Sum of GTIs [s]
l2events	54613	Number of level 2 events



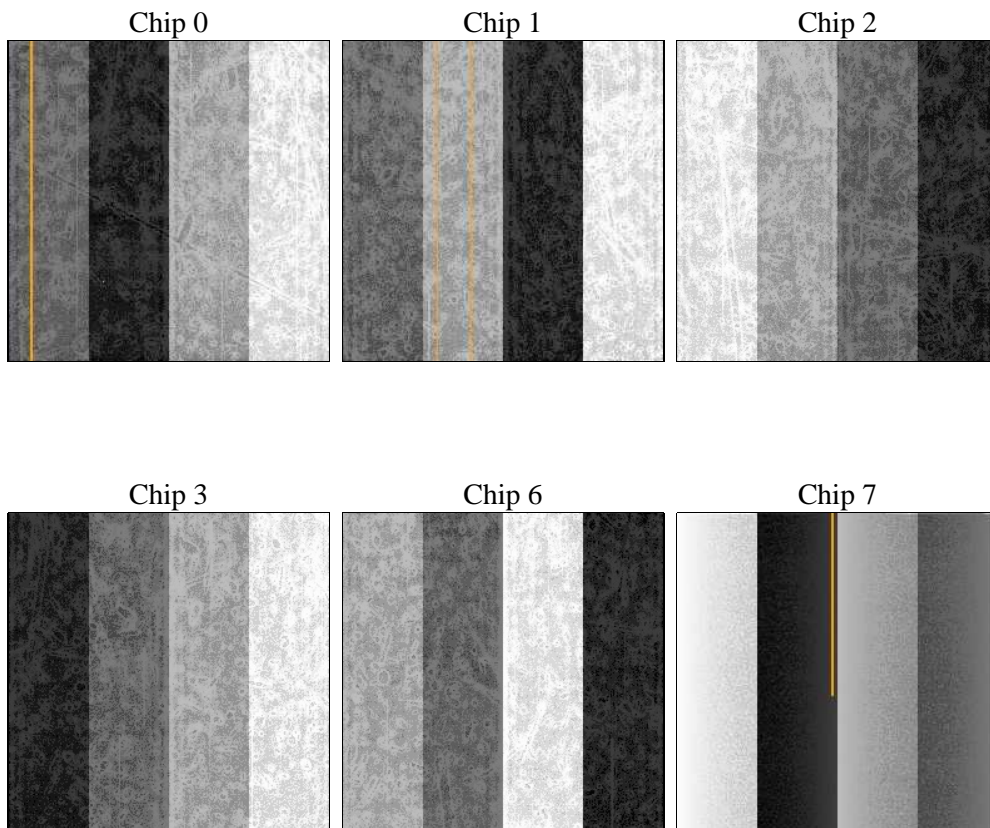
## 2 OBI

### 2.1 OBI

#### 2.1.1 Images



#### 2.1.2 Bias



### 2.1.3 Parameters

obi_num	1	Obi number	sched_exp_time	10000.000000	[s] Scheduled observation exposure time
ascdsver	8.4.3	Processing system revision	ontime	9967.9999629259	Sum of GTIs [s]
caldsver	4.4.8	&#160	ontime0	9967.9999629259	Sum of GTIs [s]
date	2012-03-27T15:26:44	Date and time of file creation	ontime1	9967.9999629259	Sum of GTIs [s]
revision	1	Processing version of data	ontime2	9967.9999629259	Sum of GTIs [s]
			ontime3	9967.9999629259	Sum of GTIs [s]
			ontime6	9967.9999629259	Sum of GTIs [s]
			ontime7	9967.9999629259	Sum of GTIs [s]
			l1events	328442	Number of level 1 events

### 2.1.4 Events

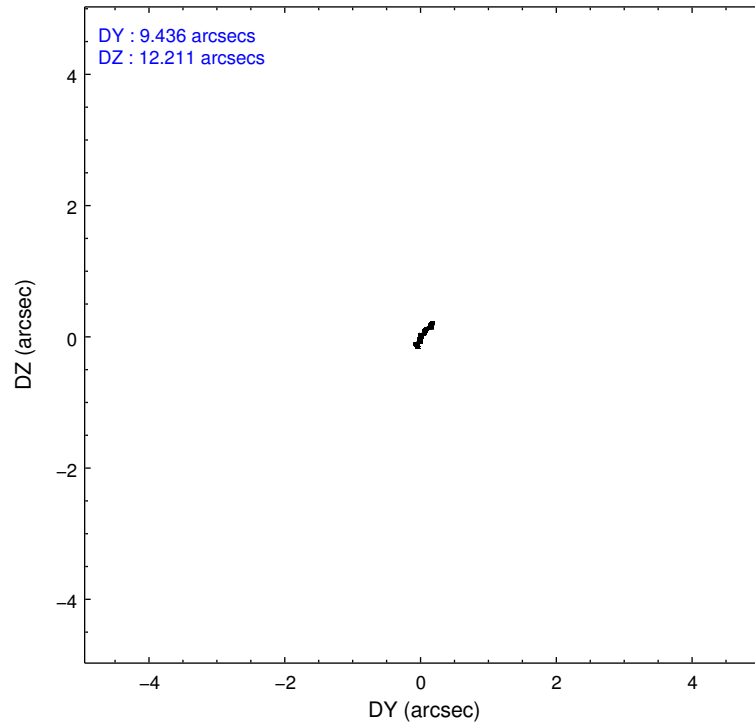
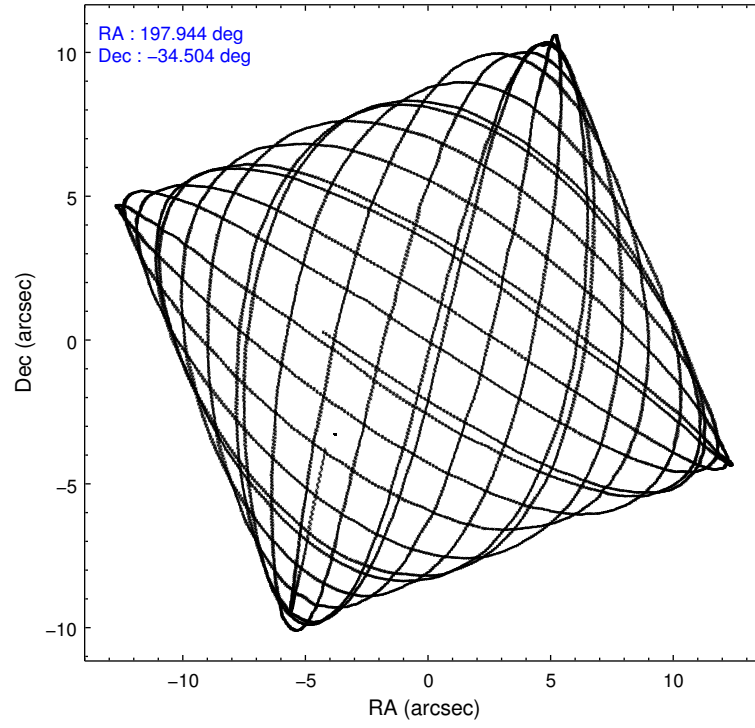
	ccd 0	ccd 1	ccd 2	ccd 3	ccd 6	ccd 7		ccd 0	ccd 1	ccd 2	ccd 3	ccd 6	ccd 7
level 1 events	54225	48002	53626	52327	58798	61464	grade 0 events	5159	2217	2244	2208	2408	3018
rejected events	45158	41614	47789	46408	52336	31878		9%	4%	4%	4%	4%	4%
rejected %	83%	86%	89%	88%	89%	51%	grade 1 events	48	31	30	29	35	91
								0%	0%	0%	0%	0%	0%
							grade 2 events	1463	1492	1339	1302	1427	6248
								2%	3%	2%	2%	2%	10%
							grade 3 events	648	665	567	590	619	2628
								1%	1%	1%	1%	1%	4%
							grade 4 events	584	682	593	643	646	2578
								1%	1%	1%	1%	1%	4%
							grade 5 events	1964	2192	1926	2352	2317	6432
								3%	4%	3%	4%	3%	10%
							grade 6 events	1216	1333	1096	1179	1369	15121
								2%	2%	2%	2%	2%	24%
							grade 7 events	43143	39390	45831	44024	49977	25348
								79%	82%	85%	84%	84%	41%

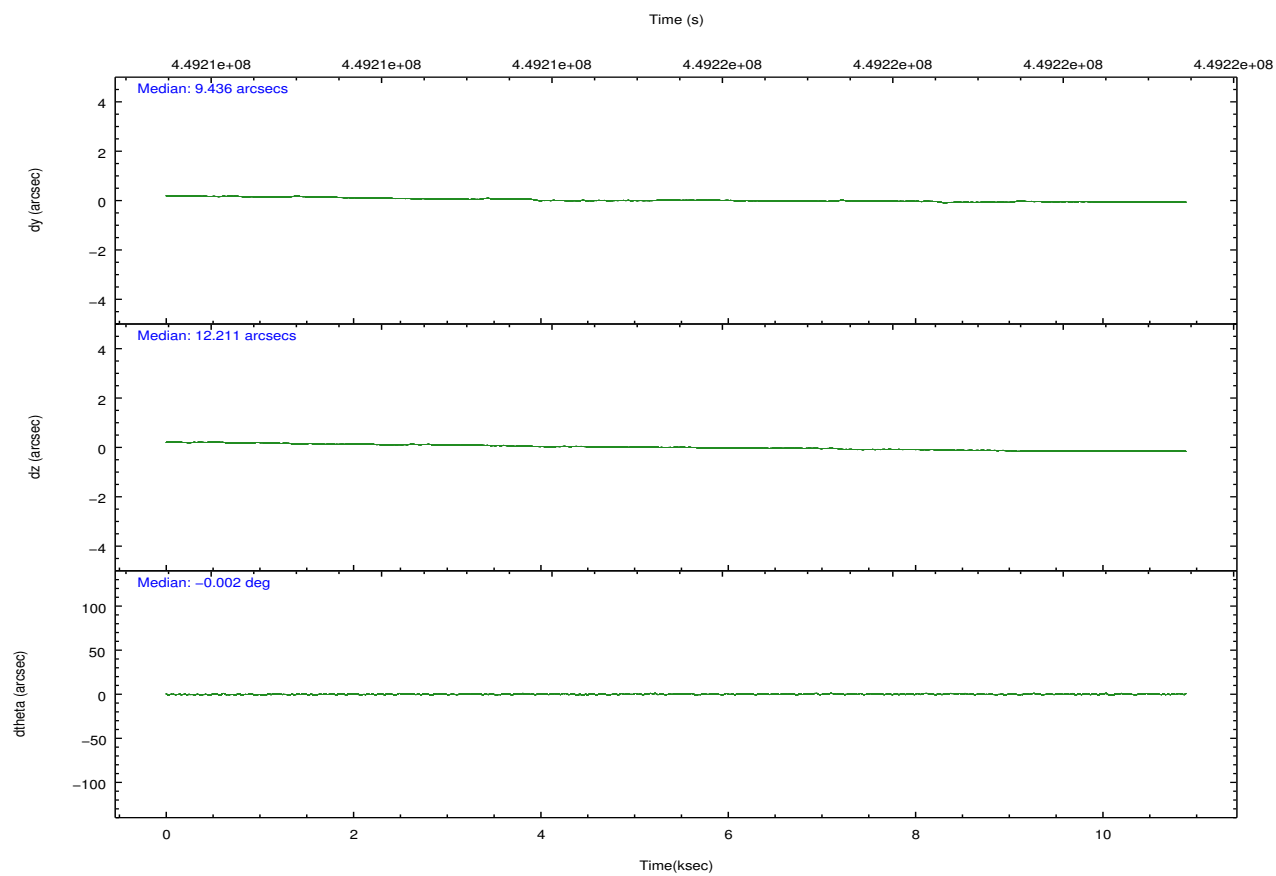
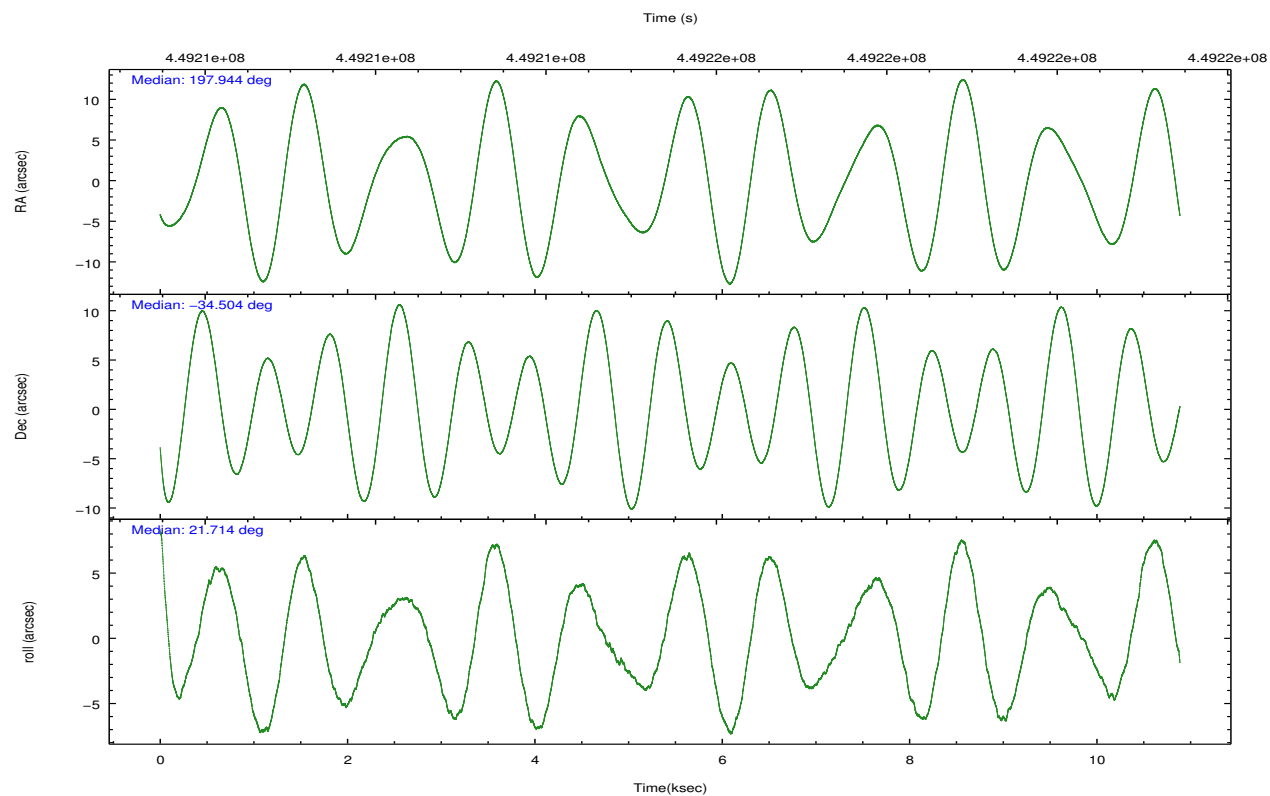


## 2.2 Compared Parameters

Parameter	Planned	Actual	Parameter	Planned	Actual
Instrument	ACIS	ACIS	Obspar format version number	7	7
Detector	ACIS-012367	ACIS-012367	Obspar file type	PREDICTED	ACTUAL
Grating	NONE	NONE	Obspar update status	NONE	UPDATED
Data mode	FAINT	FAINT	CCD I0 on	Y	Y
Observation mode	POINTING	POINTING	CCD I1 on	Y	Y
[deg] Pointing RA	197.923397	197.9439943210109	CCD I2 on	Y	Y
[deg] Pointing Dec	-34.525477	-34.50384167951292	CCD I3 on	Y	Y
[deg] Pointing Roll	21.501269	21.72164070618498	CCD S0 on	N	N
[mm] SIM focus pos	-0.782348	-0.7809083437167272	CCD S1 on	N	N
[mm] SIM defocus	0	0.001439871863259334	CCD S2 on	O2	Y
[mm] SIM translation stage pos	-233.592463	-233.5874344608287	CCD S3 on	O1	Y
[mm] SIM translation stage offset	0	-0.005018542100998502	CCD S4 on	N	N
[s] Observation start time (MET)	449210902.184000	449209358.28996	CCD S5 on	N	N
Observation start date	2012-03-27T04:47:16	2012-03-27T04:22:38	Number of optional ACIS chips dropped	0	0
[s] Observation end time (MET)	449220902.184000	449222231.26564	On-chip summing requested	N	N
Observation end date	2012-03-27T07:33:56	2012-03-27T07:57:11	Subarray requested	NONE	NONE
Read mode	TIMED	TIMED	Alternating exposures requested	N	N
			[s] Primary exposure time	0.000000	3.2

## 2.3 Aspect



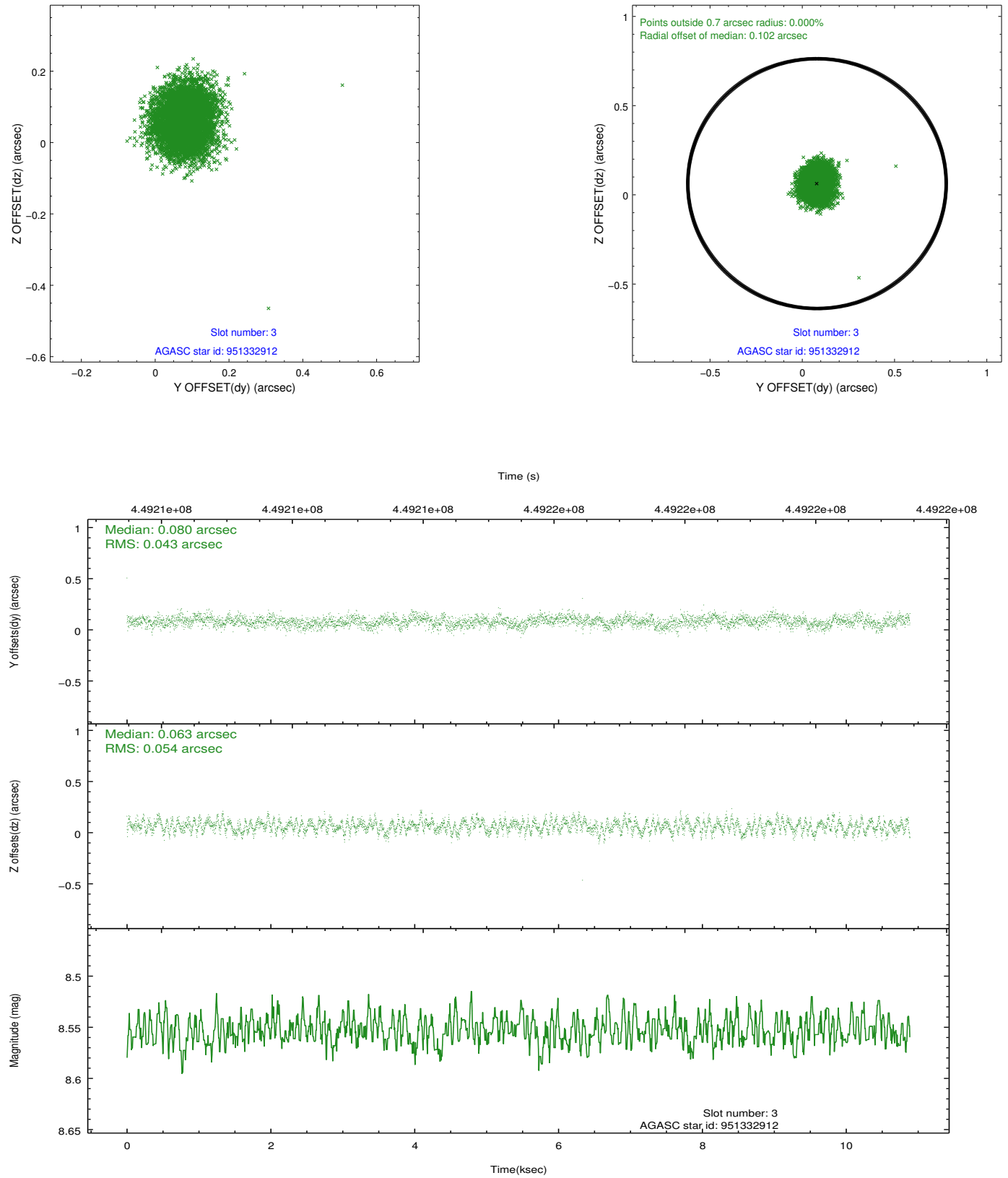


### Slot Statistics

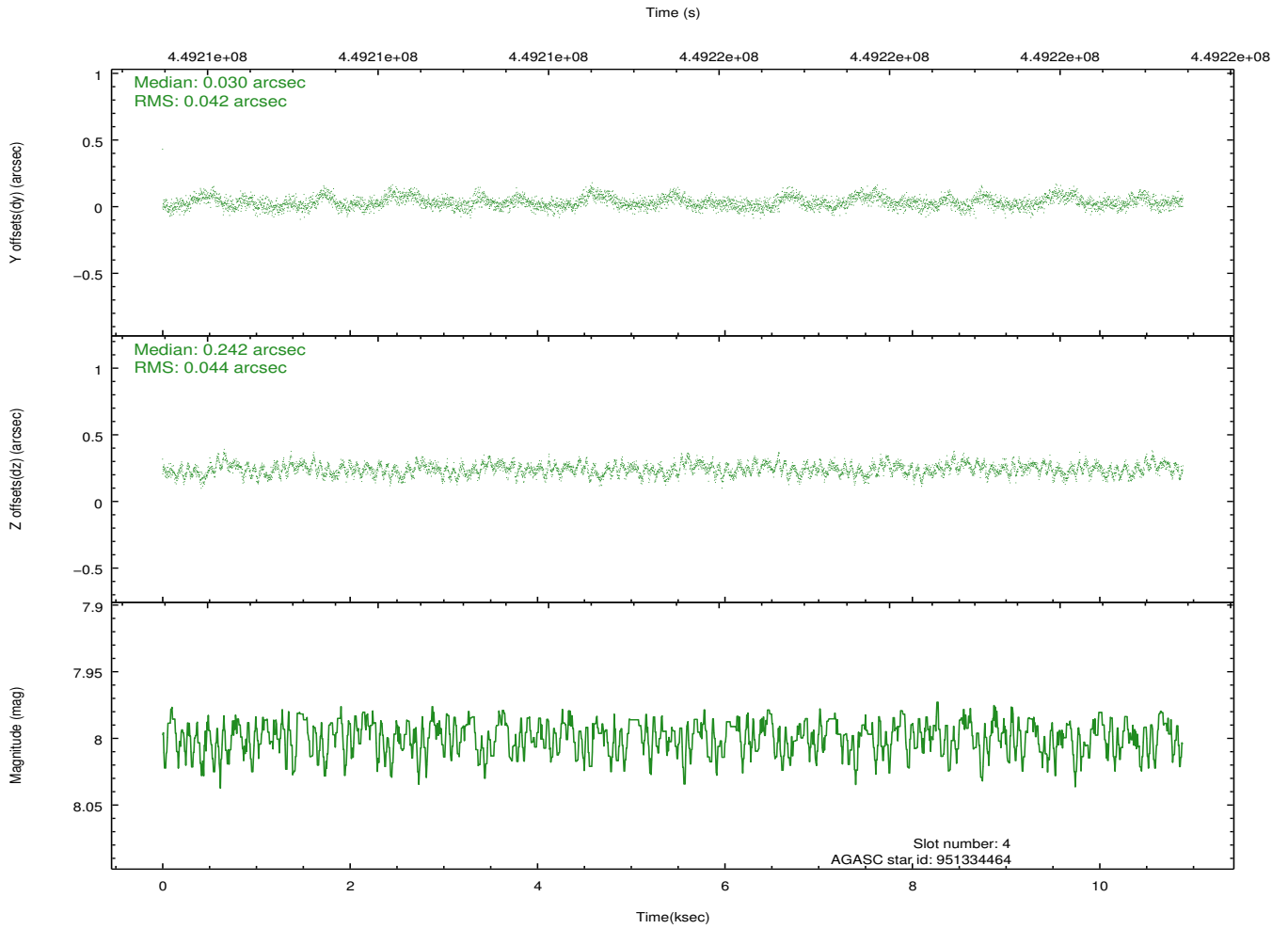
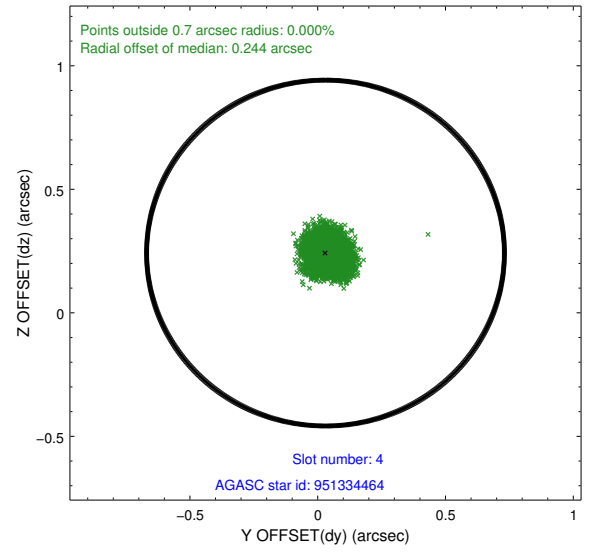
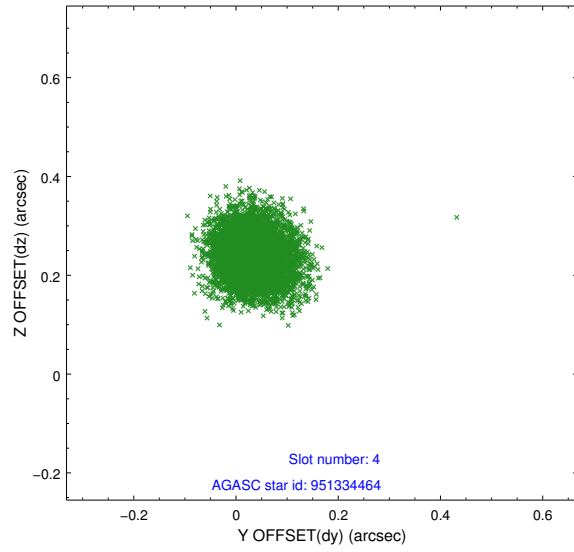
slot	status	id	mag	n_pts	med_dy	med_dz	dr1	dr2	ra	dec	mean_y	mean_z
0	FID	ACIS-I-1	7.11	2655	0.094	-0.041	0.007	0.013	0.000000	0.000000	930.24	-835.79
1	FID	ACIS-I-5	7.09	2656	-0.218	0.098	0.006	0.011	0.000000	0.000000	-1817.90	1061.62
2	FID	ACIS-I-6	7.10	2655	0.033	0.014	0.008	0.013	0.000000	0.000000	395.22	1706.56
3	GUIDE	951332912	8.55	5312	0.080	0.063	0.074	0.115	197.665930	-35.054785	-1407.17	-1498.66
4	GUIDE	951334464	8.00	5311	0.030	0.242	0.065	0.103	197.515193	-35.311319	-2153.44	-2195.03
5	GUIDE	951335272	8.63	5308	0.018	-0.333	0.084	0.138	197.097254	-34.118801	-1758.92	2254.68
6	GUIDE	953032496	8.69	5308	-0.238	0.014	0.071	0.120	198.545031	-34.685379	1498.97	-1214.42
7	GUIDE	953033968	7.82	5310	0.106	0.018	0.070	0.111	198.455394	-34.674263	1268.45	-1079.27

## 2.4 Star Slots

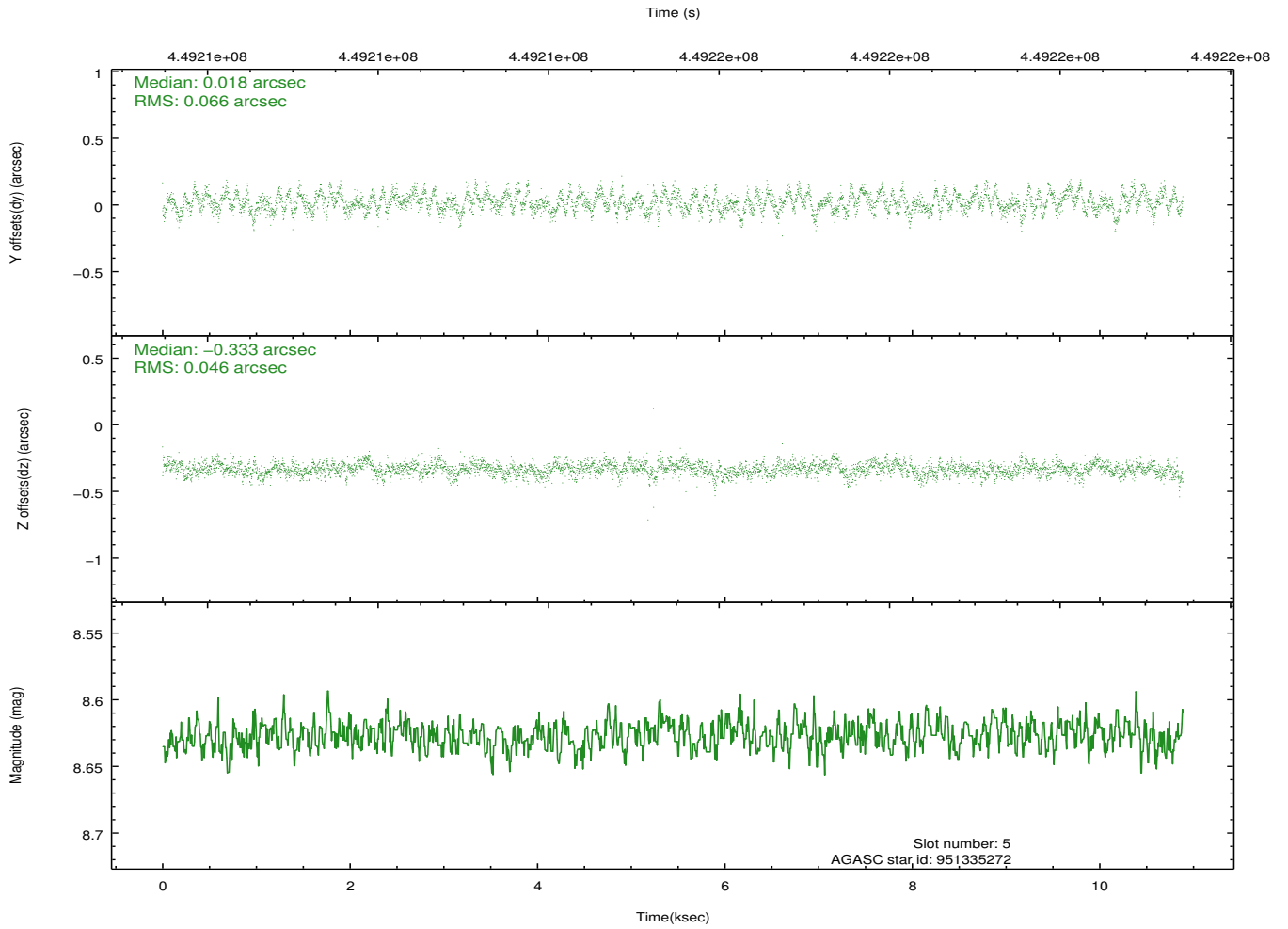
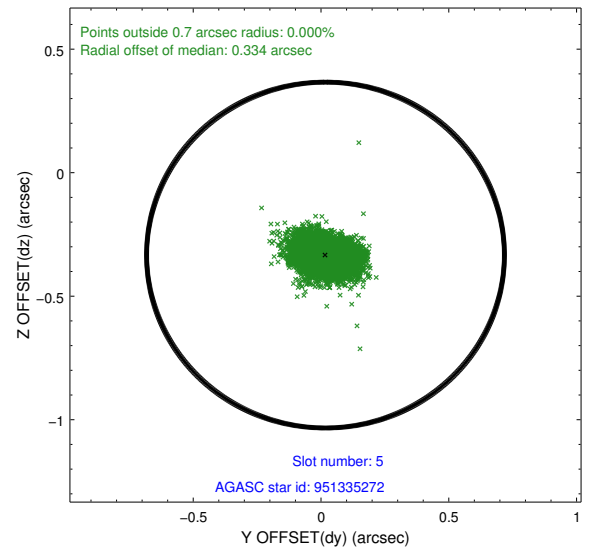
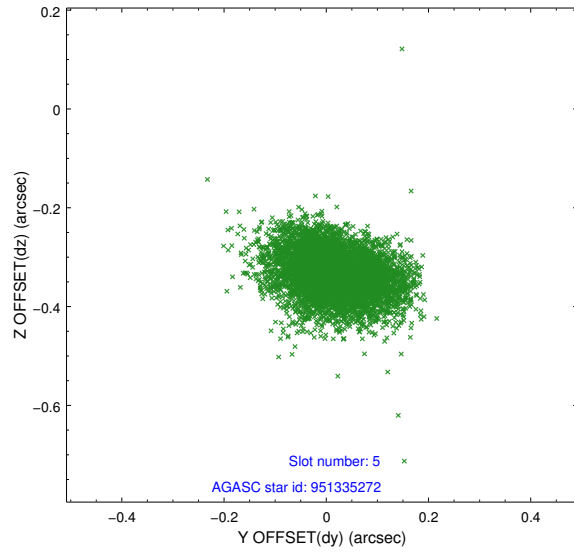
### 2.4.1 Slot 3



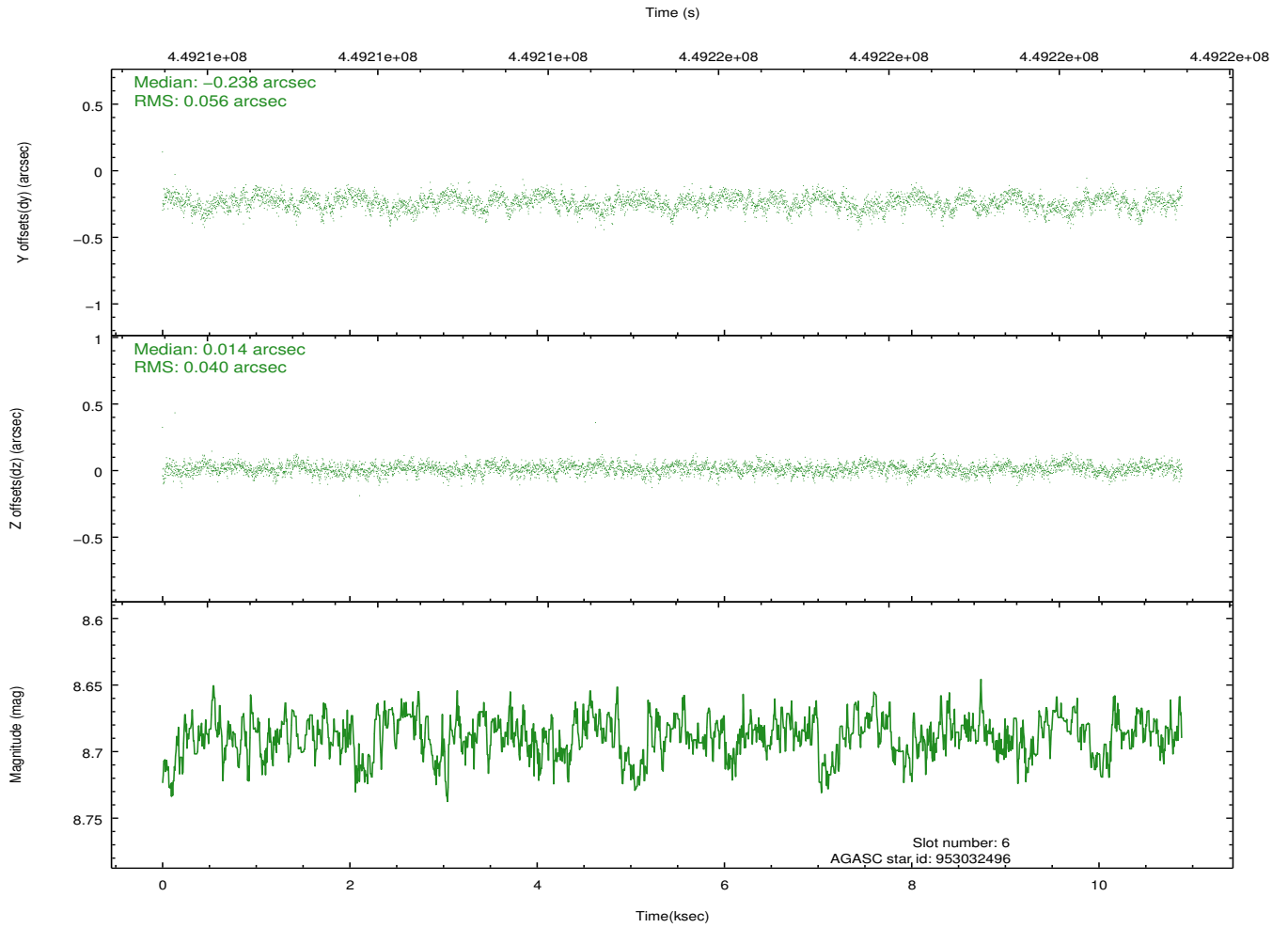
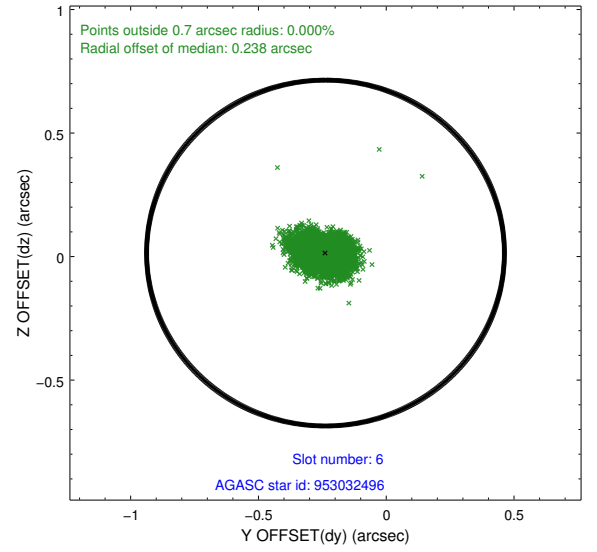
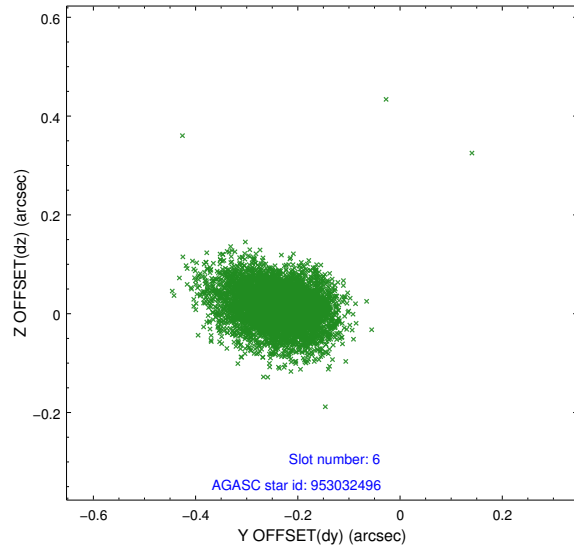
## 2.4.2 Slot 4



### 2.4.3 Slot 5

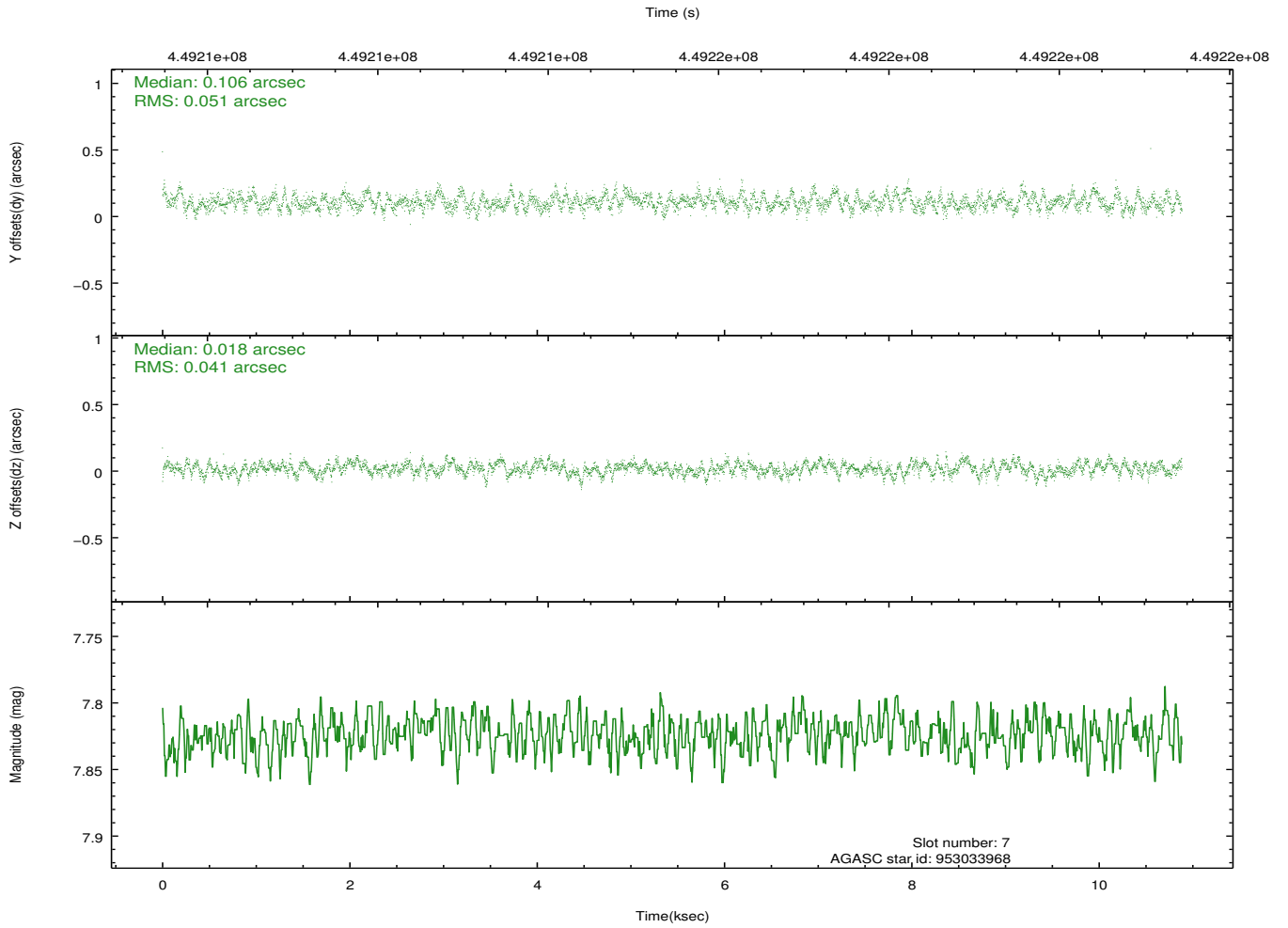
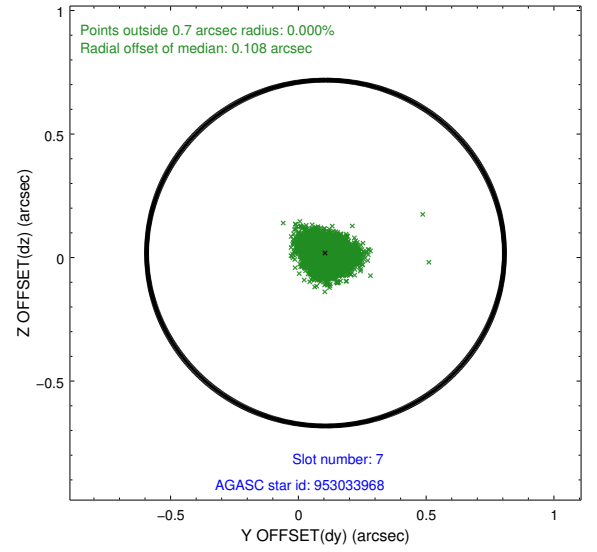
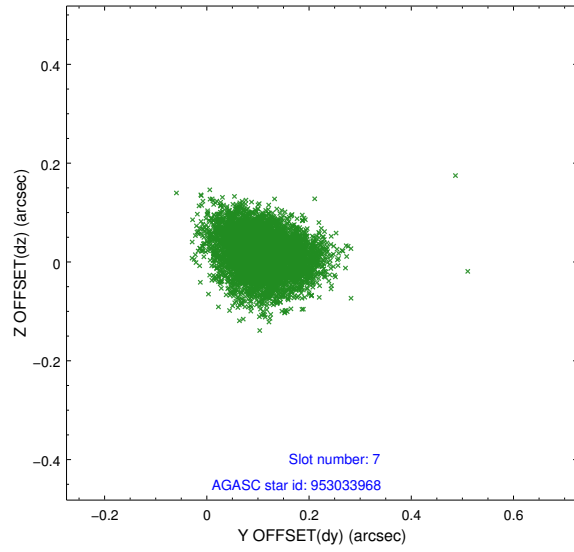


## 2.4.4 Slot 6



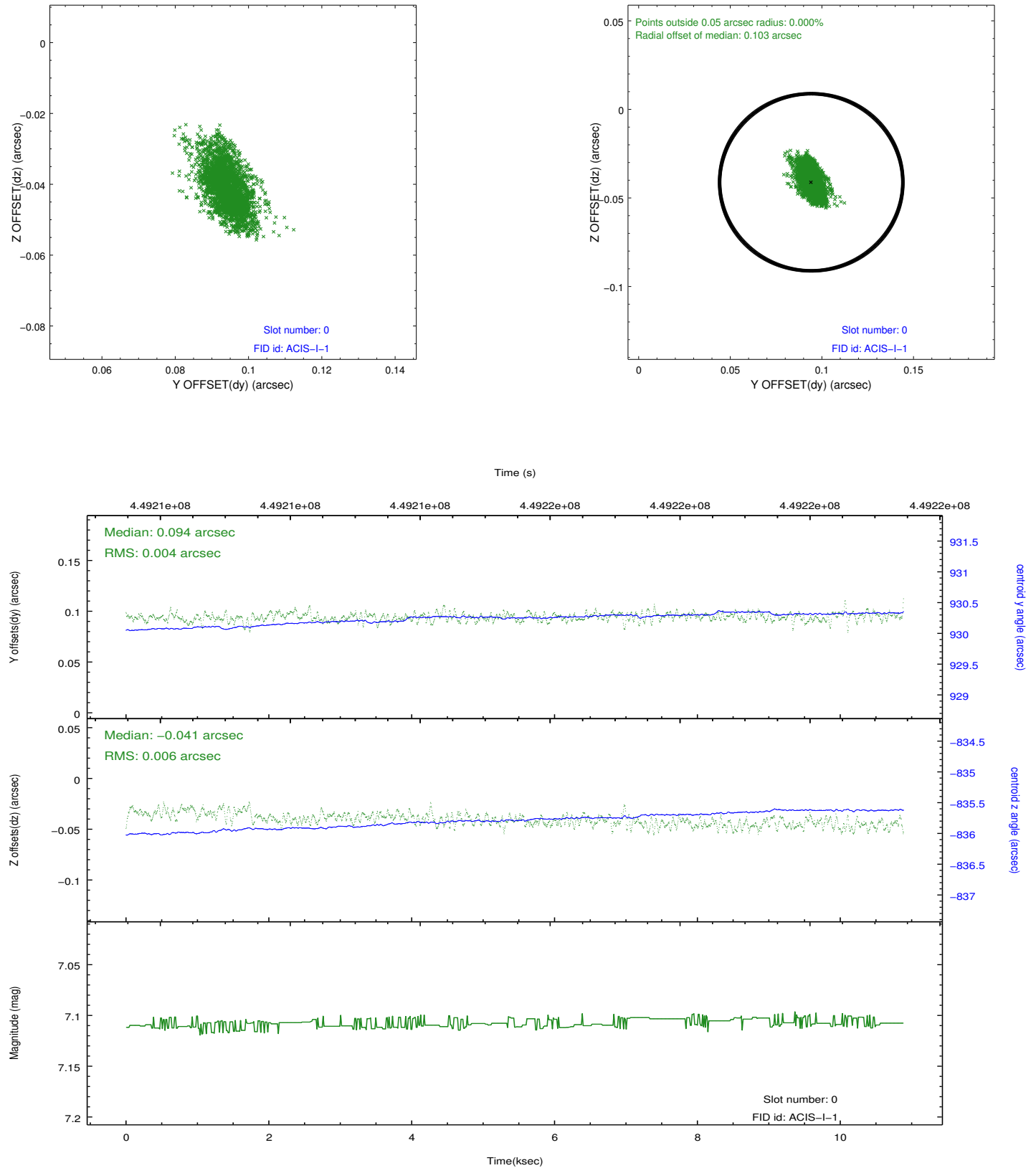


## 2.4.5 Slot 7

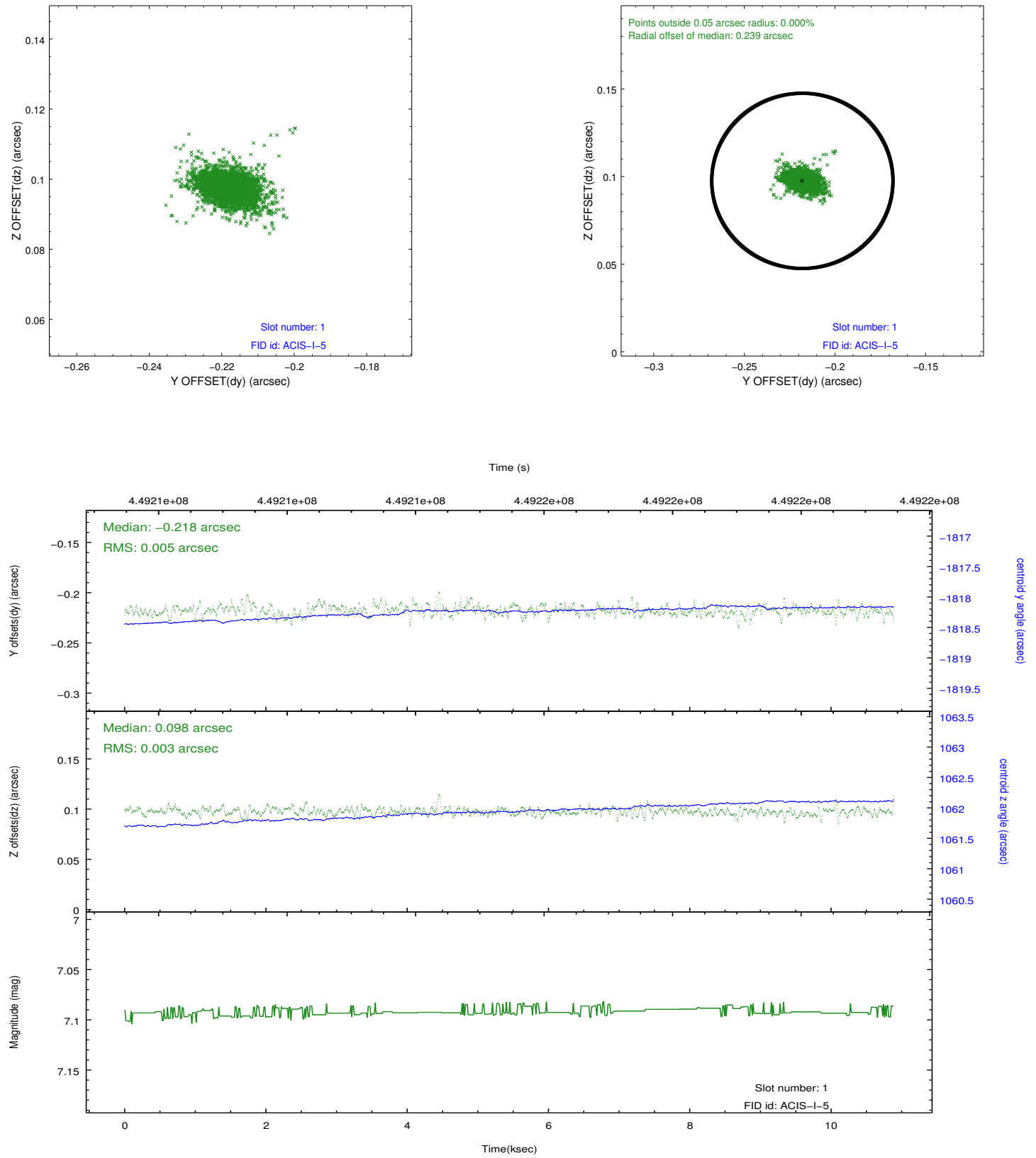


## 2.5 FID Slots

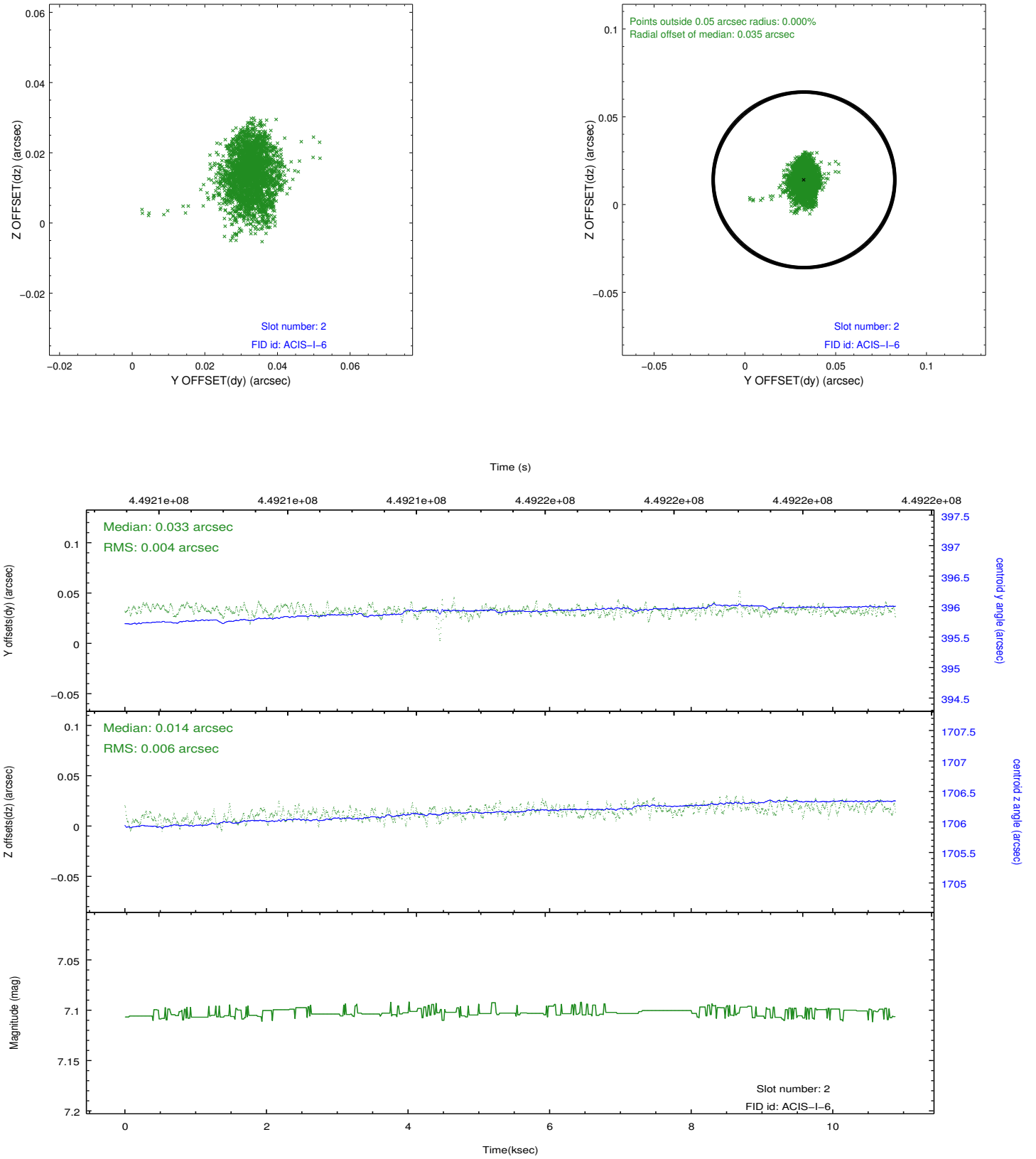
### 2.5.1 Slot 0



## 2.5.2 Slot 1



### 2.5.3 Slot 2



## A Summary

### A.1 Status

V&V Scientist	Jen Lauer
V&V Date (YYYY-MM-DD)	2012.03.27
V&V Edition	1
V&V Disposition and Status	OK
V&V Charge Time	9.9679999629259

### A.2 Comments