

V&V Reference Report

L2 ASCDS Version : 8.4.4

Observation 13680 - L2 Version 1
Chandra X-Ray Center

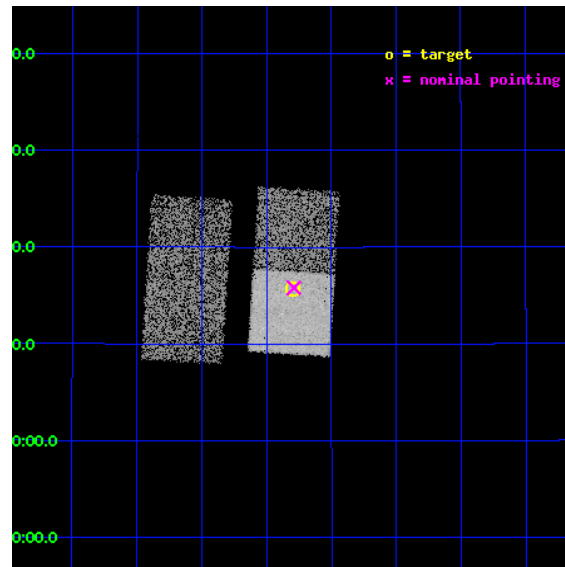
L2 Processing Date : May 7 2012

Contents

1	Front	2
2	OBI	3
2.1	OBI	3
2.1.1	Images	3
2.1.2	Bias	3
2.1.3	Parameters	4
2.1.4	Events	4
2.2	Compared Parameters	5
2.3	Aspect	6
2.4	Star Slots	9
2.4.1	Slot 3	9
2.4.2	Slot 4	10
2.4.3	Slot 5	11
2.4.4	Slot 6	12
2.4.5	Slot 7	13
2.5	FID Slots	14
2.5.1	Slot 0	14
2.5.2	Slot 1	15
2.5.3	Slot 2	16
A	Summary	17
A.1	Status	17
A.2	Comments	17

1 Front

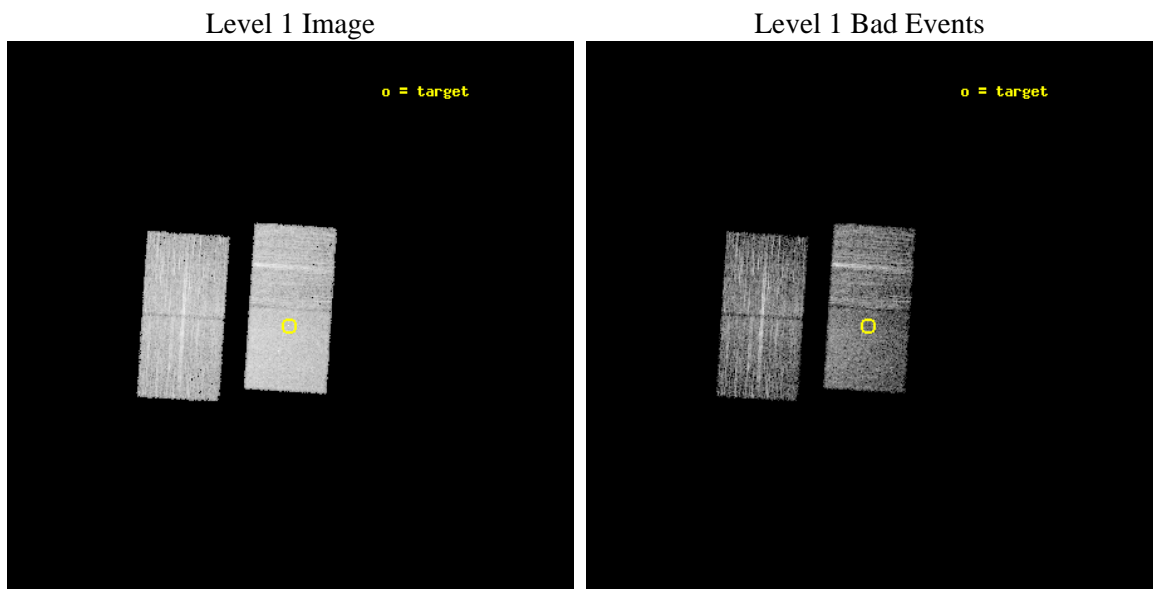
seq_num	300311	Sequence number
obs_id	13680	Observation id
title	Probing Coronal Supersaturation in Pre-Cataclysmic Binaries with M-type Companions	Proposal title
observer	Dr. Jeremy Drake	Principal investigator
object	MS Peg	Source name
dtcycle	0	
cycle	P	events from which exps? Prim/Second/Both
ra_targ	344.700417	Observer's specified target RA [deg]
dec_targ	25.261944	Observer's specified target Dec [deg]
ra_nom	344.69746260174	Nominal RA [deg]
dec_nom	25.263347435442	Nominal Dec [deg]
roll_nom	93.682577801514	Nominal Roll [deg]
revision	1	Processing version of data
ontime	8072.4000620842	Sum of GTIs [s]
livetime	7966.9282124586	Livetime [s]
ontime2	8072.4000620842	Sum of GTIs [s]
ontime3	8072.4000620842	Sum of GTIs [s]
ontime6	8072.4000620842	Sum of GTIs [s]
ontime7	8072.4000620842	Sum of GTIs [s]
l2events	42012	Number of level 2 events



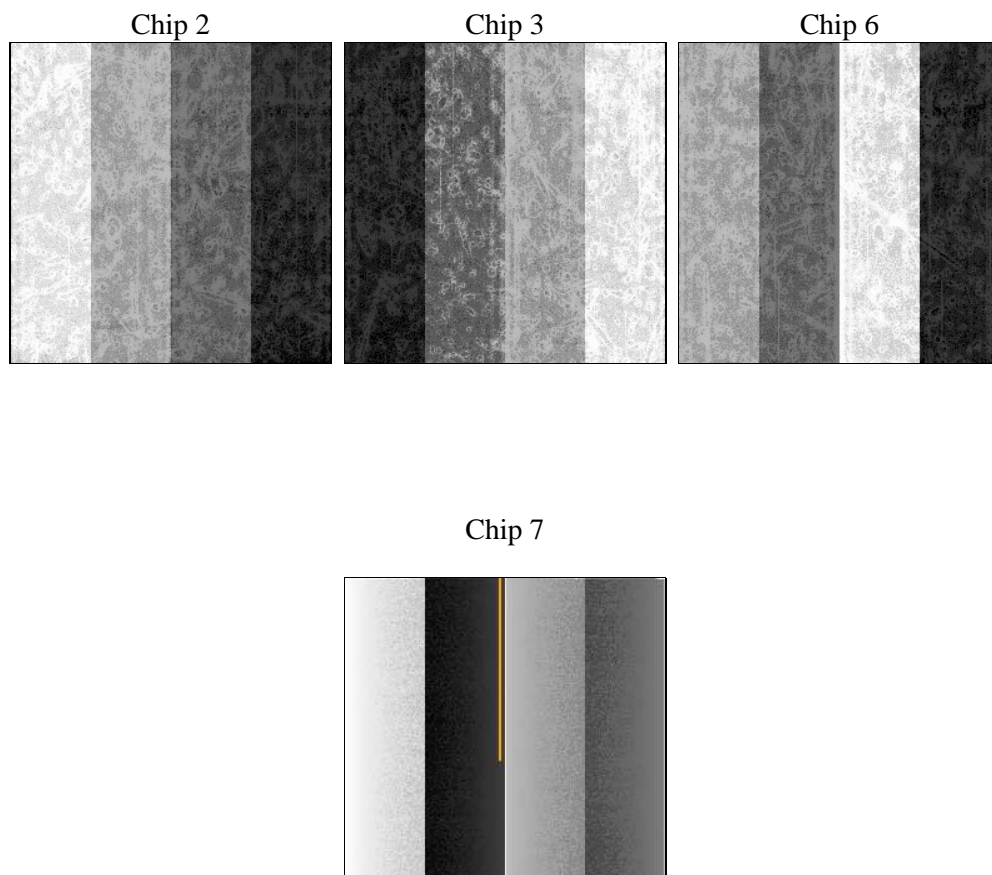
2 OBI

2.1 OBI

2.1.1 Images



2.1.2 Bias



2.1.3 Parameters

obi_num	0	Obi number	sched_exp_time	8000.000000	[s] Scheduled observation exposure time
ascdsver	8.4.4	Processing system revision	ontime	8072.4000620842	Sum of GTIs [s]
caldsver	4.4.9	 	ontime2	8072.4000620842	Sum of GTIs [s]
date	2012-05-07T06:36:33	Date and time of file creation	ontime3	8072.4000620842	Sum of GTIs [s]
revision	1	Processing version of data	ontime6	8072.4000620842	Sum of GTIs [s]
			ontime7	8072.4000620842	Sum of GTIs [s]
			l1events	208170	Number of level 1 events

2.1.4 Events

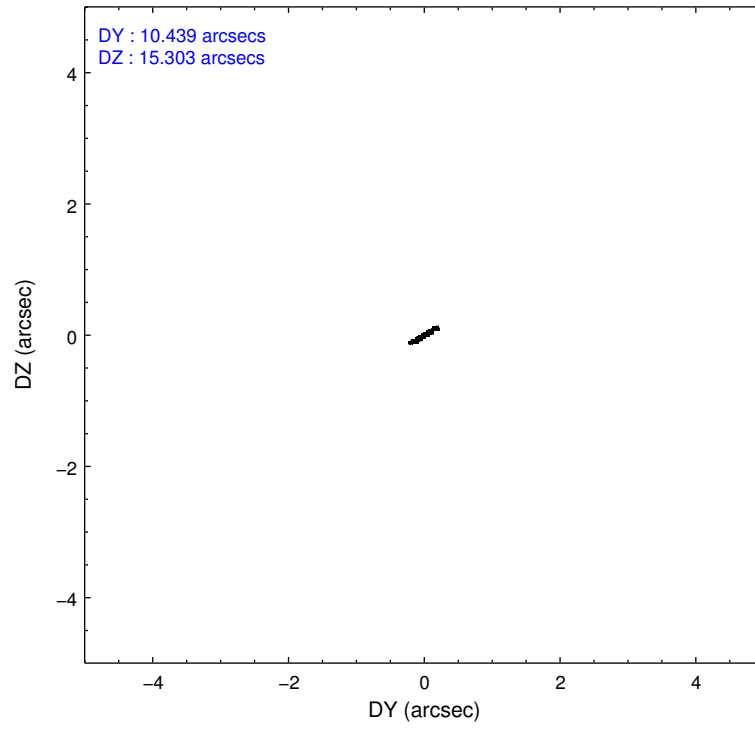
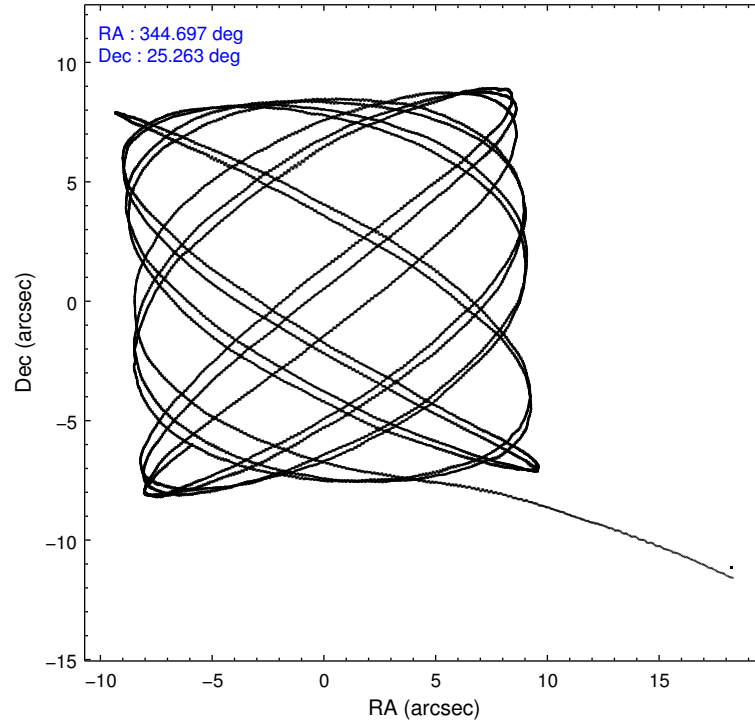
	ccd 2	ccd 3	ccd 6	ccd 7
level 1 events	49061	45604	49363	64142
rejected events	43739	40430	43647	35396
rejected %	89%	88%	88%	55%

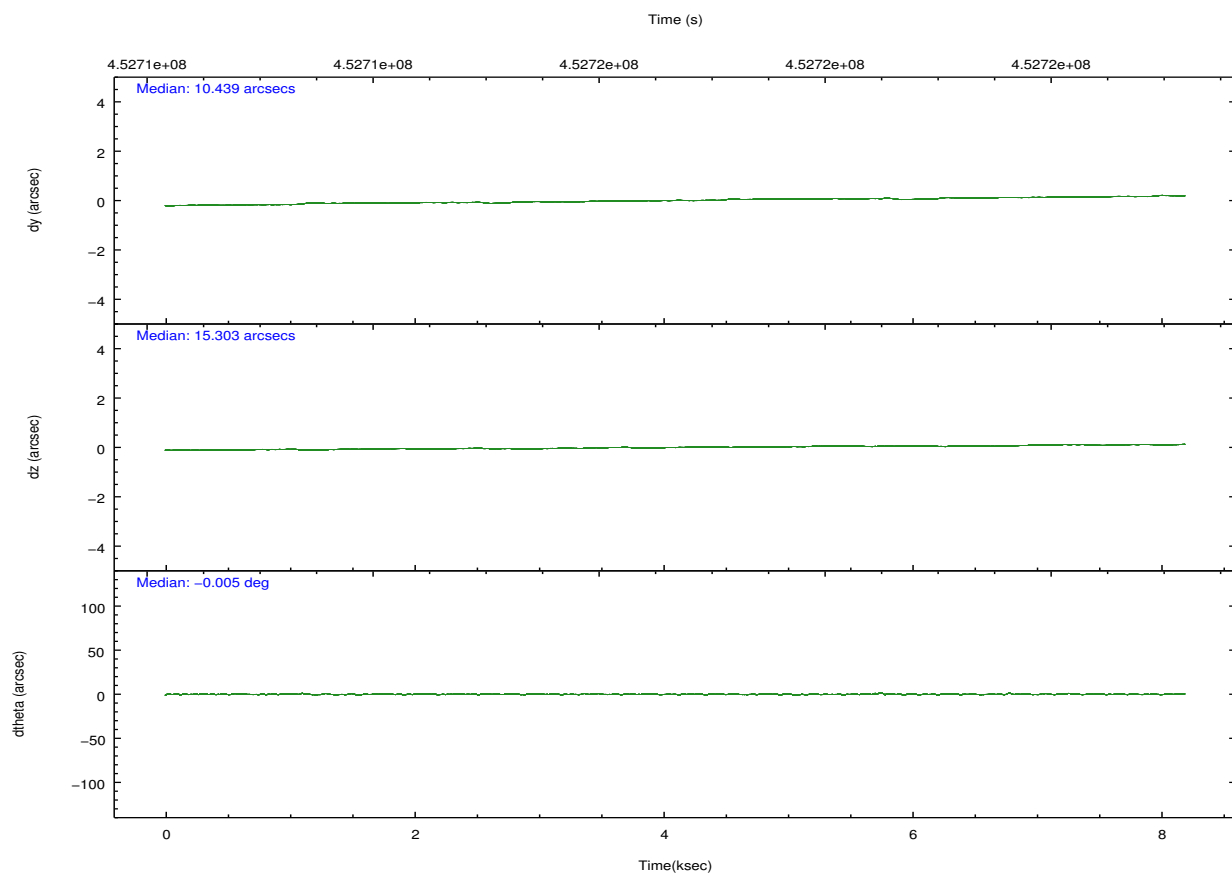
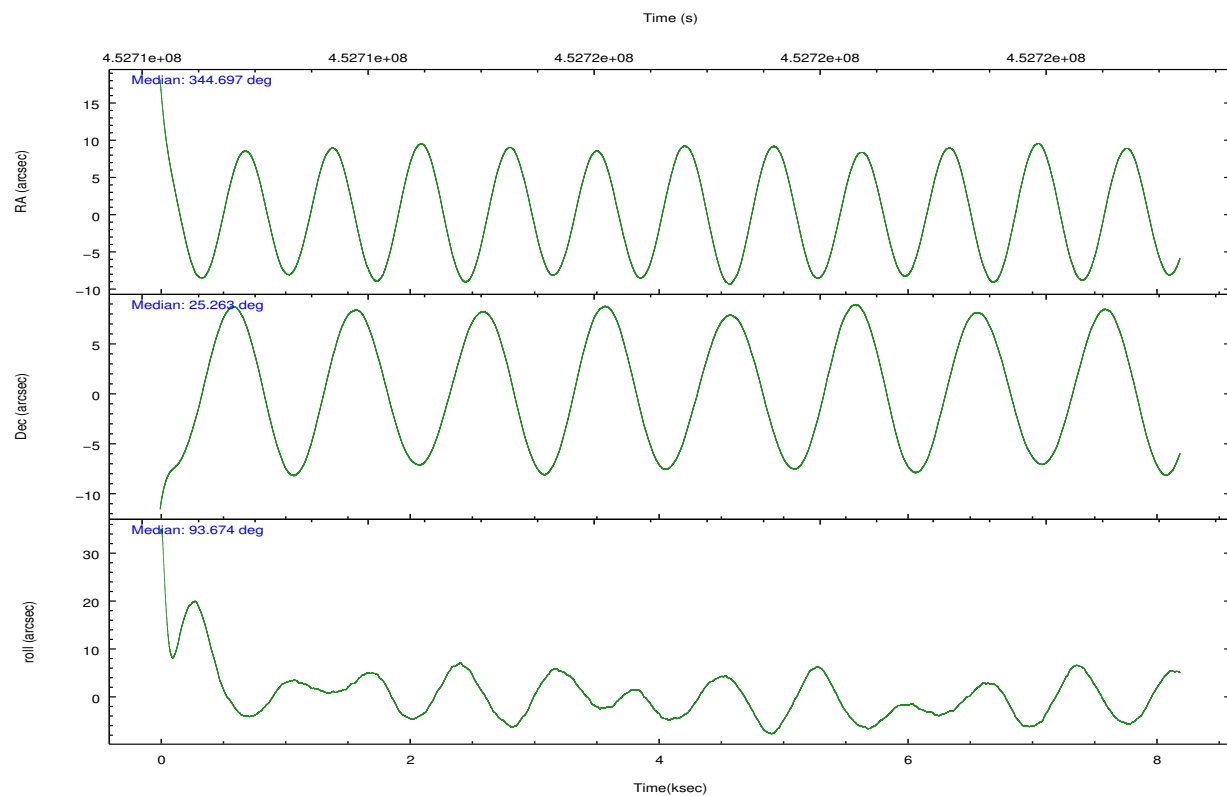
	ccd 2	ccd 3	ccd 6	ccd 7
grade 0 events	1853	1921	1980	2583
	3%	4%	4%	4%
grade 1 events	30	33	27	82
	0%	0%	0%	0%
grade 2 events	1326	1126	1210	5934
	2%	2%	2%	9%
grade 3 events	552	519	582	2454
	1%	1%	1%	3%
grade 4 events	535	548	607	2572
	1%	1%	1%	4%
grade 5 events	2056	2289	2401	6783
	4%	5%	4%	10%
grade 6 events	1058	1062	1340	15217
	2%	2%	2%	23%
grade 7 events	41651	38106	41216	28517
	84%	83%	83%	44%

2.2 Compared Parameters

Parameter	Planned	Actual	Parameter	Planned	Actual
Instrument	ACIS	ACIS	Obspar format version number	7	7
Detector	ACIS-2367	ACIS-2367	Obspar file type	PREDICTED	ACTUAL
Grating	NONE	NONE	Obspar update status	NONE	UPDATED
Data mode	FAINT	FAINT	Number of optional ACIS chips dropped	0	0
Observation mode	POINTING	POINTING	On-chip summing requested	N	N
[deg] Pointing RA	344.714597	344.6974626017444	Subarray requested	NONE	NONE
[deg] Pointing Dec	25.240862	25.26334743544226	Alternating exposures requested	N	N
[deg] Pointing Roll	93.518598	93.68257780151394	[s] Primary exposure time	0.000000	3.1
[mm] SIM focus pos	-0.684267	-0.6828225247311905			
[mm] SIM defocus	0	0.001444936568705701			
[mm] SIM translation stage pos	-190.132523	-190.1400660498719			
[mm] SIM translation stage offset	0	0.00754346686406393			
[s] Observation start time (MET)	452712760.184000	452711863.93828			
Observation start date	2012-05-06T17:31:34	2012-05-06T17:17:43			
[s] Observation end time (MET)	452720760.184000	452721727.0013			
Observation end date	2012-05-06T19:44:54	2012-05-06T20:02:07			
Read mode	TIMED	TIMED			

2.3 Aspect



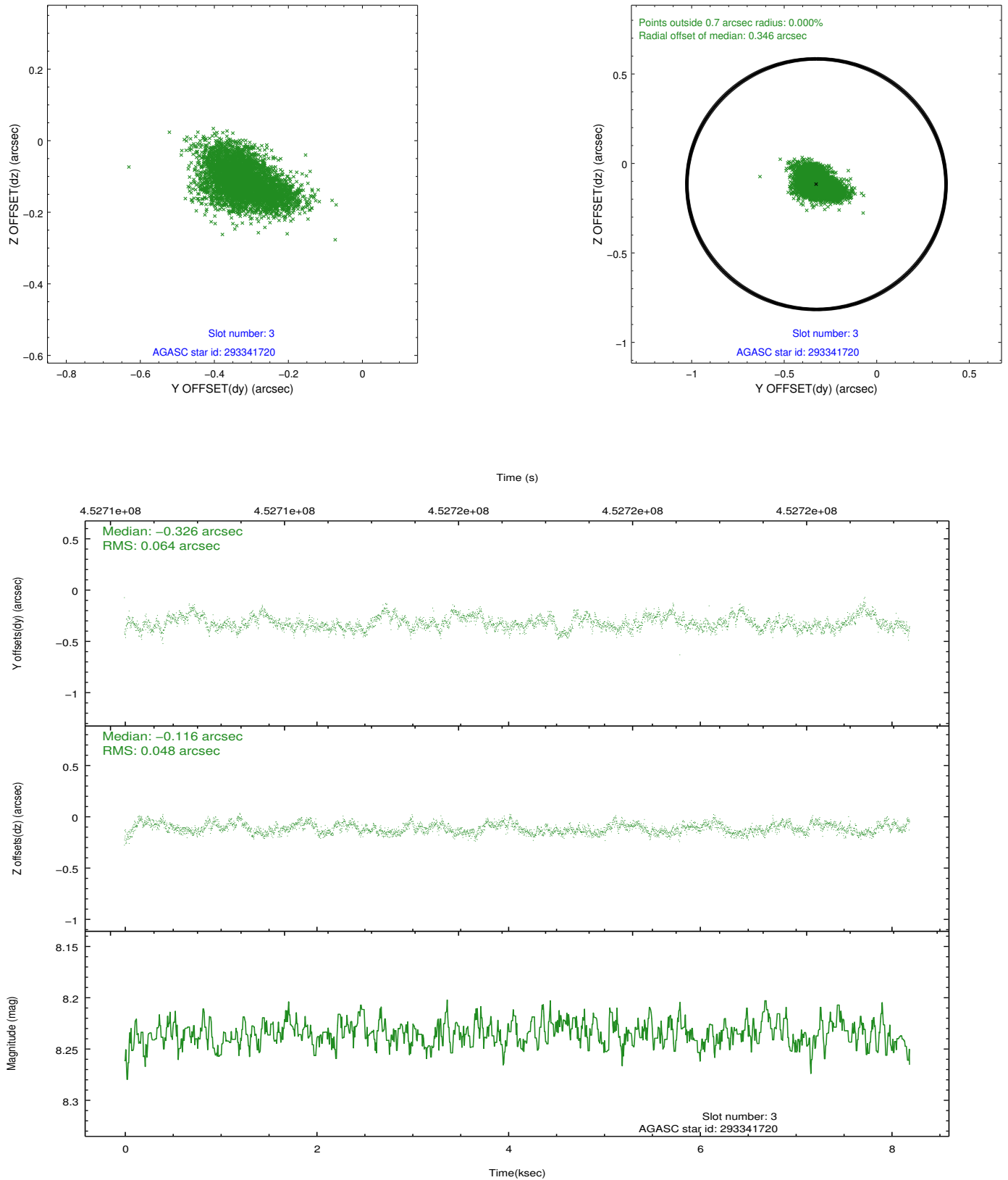


Slot Statistics

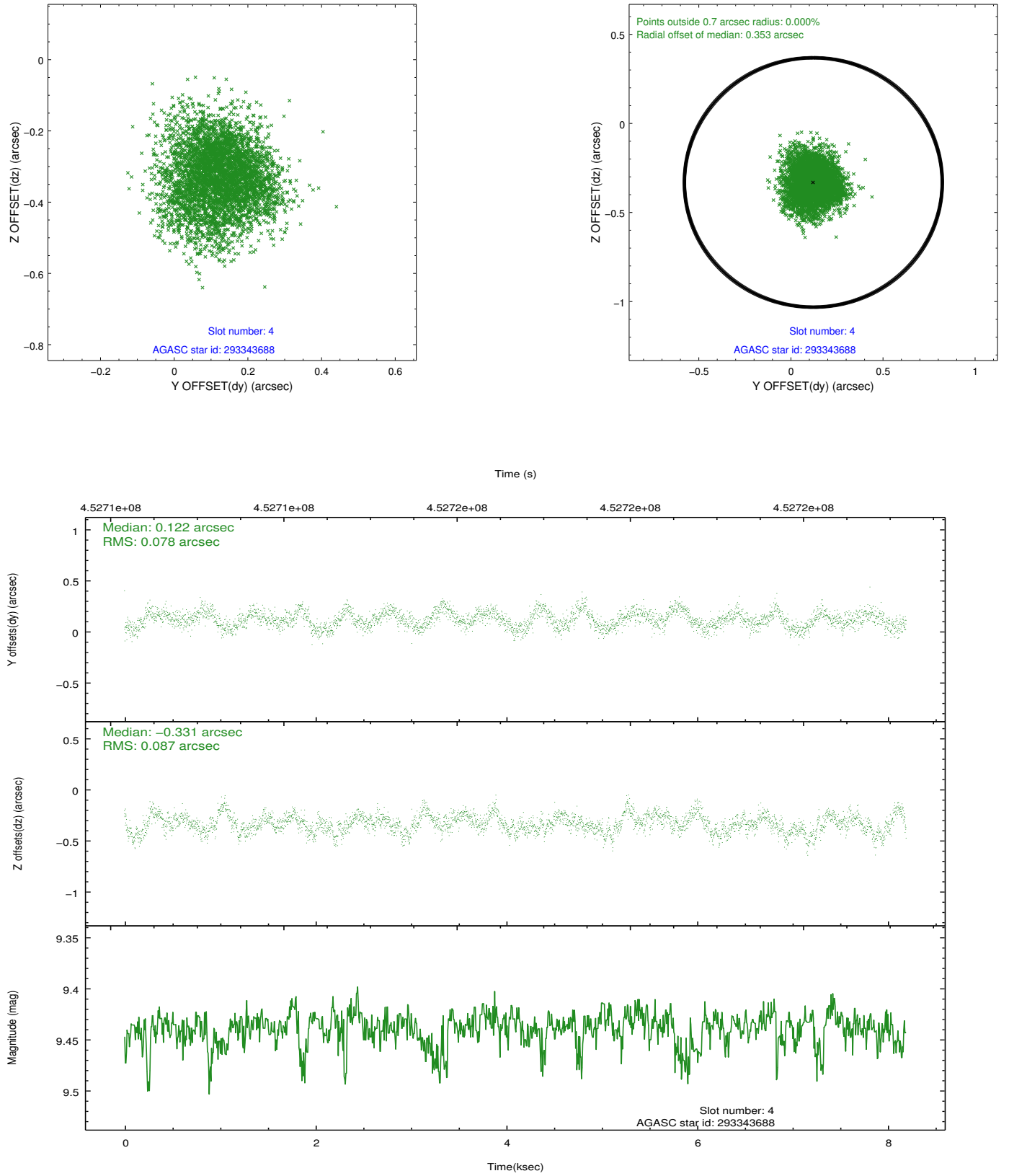
slot	status	id	mag	n_pts	med_dy	med_dz	dr1	dr2	ra	dec	mean_y	mean_z
0	FID	ACIS-S-1	6.96	1999	0.018	-0.022	0.008	0.015	0.000000	0.000000	932.76	-1732.35
1	FID	ACIS-S-4	6.97	1999	0.140	0.011	0.007	0.011	0.000000	0.000000	2150.67	171.14
2	FID	ACIS-S-5	7.00	1999	-0.185	0.024	0.006	0.011	0.000000	0.000000	-1815.44	165.53
3	GUIDE	293341720	8.24	3997	-0.326	-0.116	0.084	0.139	344.937767	25.881433	2258.40	-862.89
4	GUIDE	293343688	9.44	3995	0.122	-0.331	0.125	0.198	344.359282	25.165155	-198.30	1171.59
5	GUIDE	293345264	8.45	3996	0.229	0.118	0.100	0.163	344.881106	25.114342	-486.69	-513.48
6	GUIDE	293346280	8.95	3998	-0.044	0.060	0.083	0.135	344.941738	25.643867	1404.06	-824.75
7	GUIDE	293473320	9.61	3988	0.008	0.269	0.166	0.264	345.413847	25.787933	1831.69	-2385.92

2.4 Star Slots

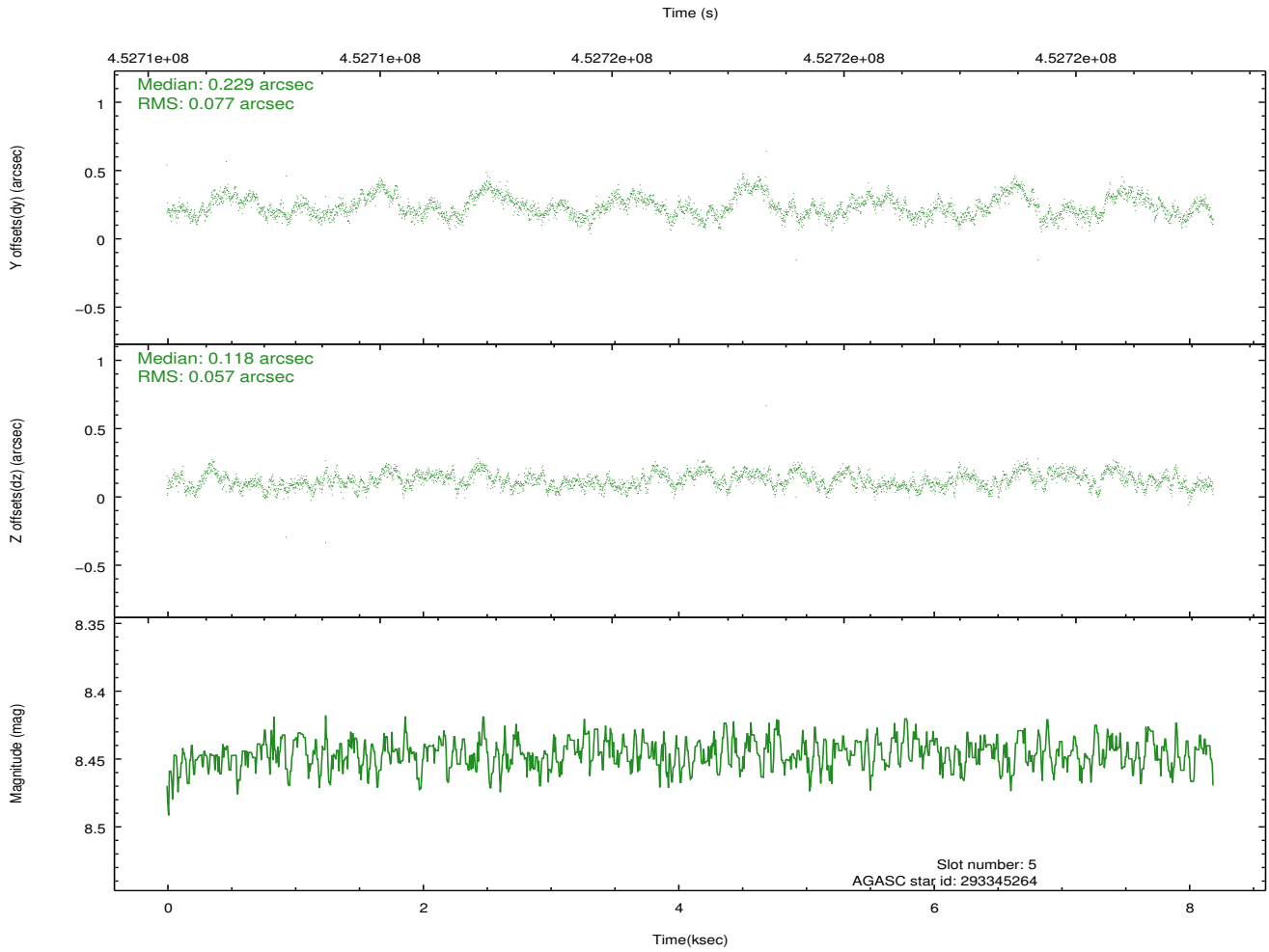
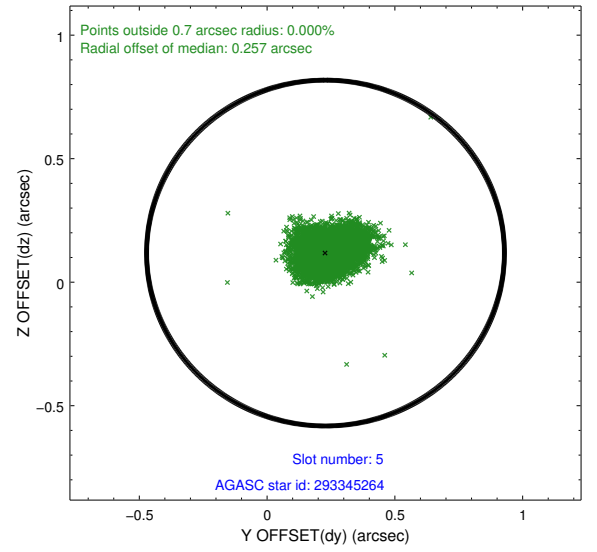
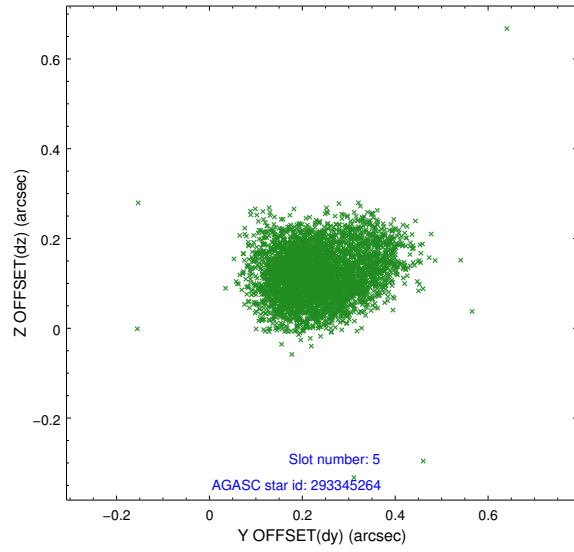
2.4.1 Slot 3



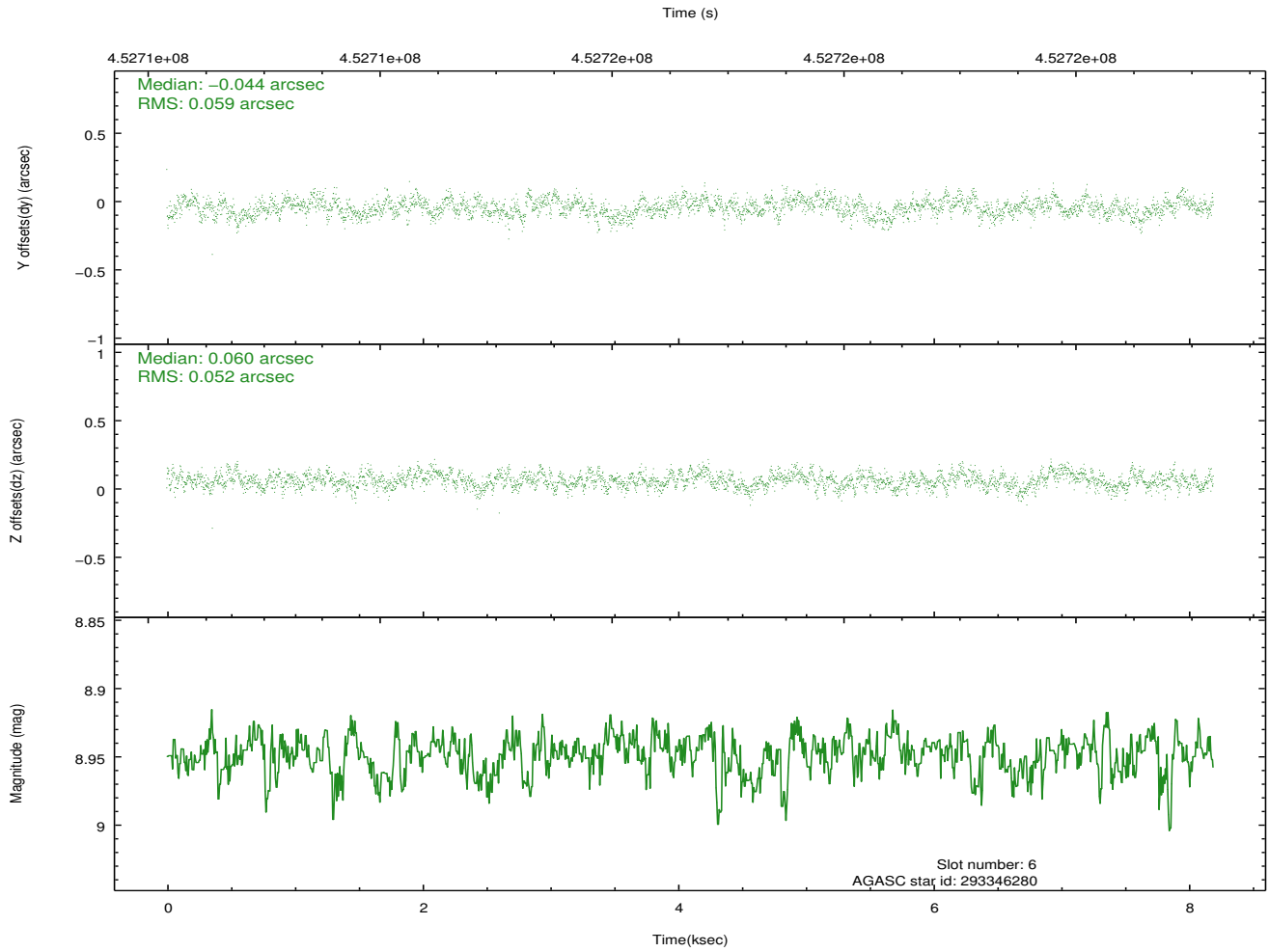
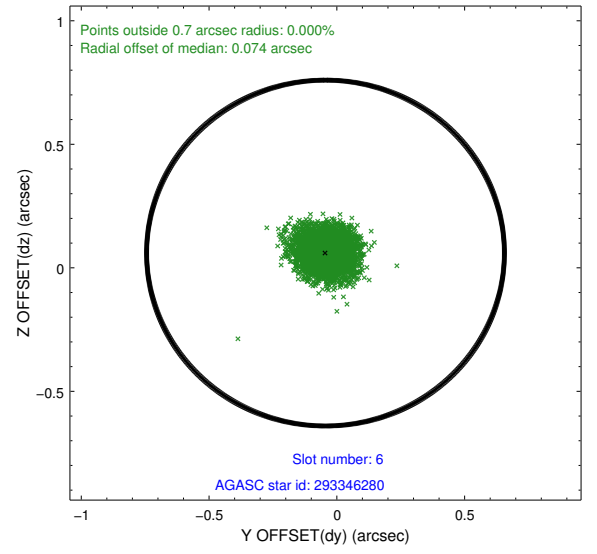
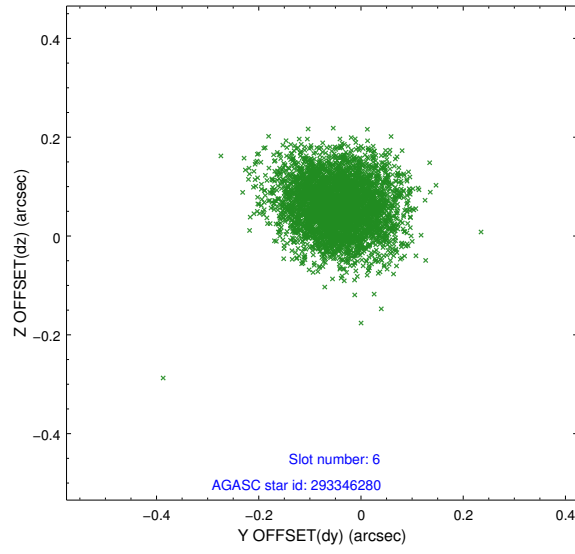
2.4.2 Slot 4



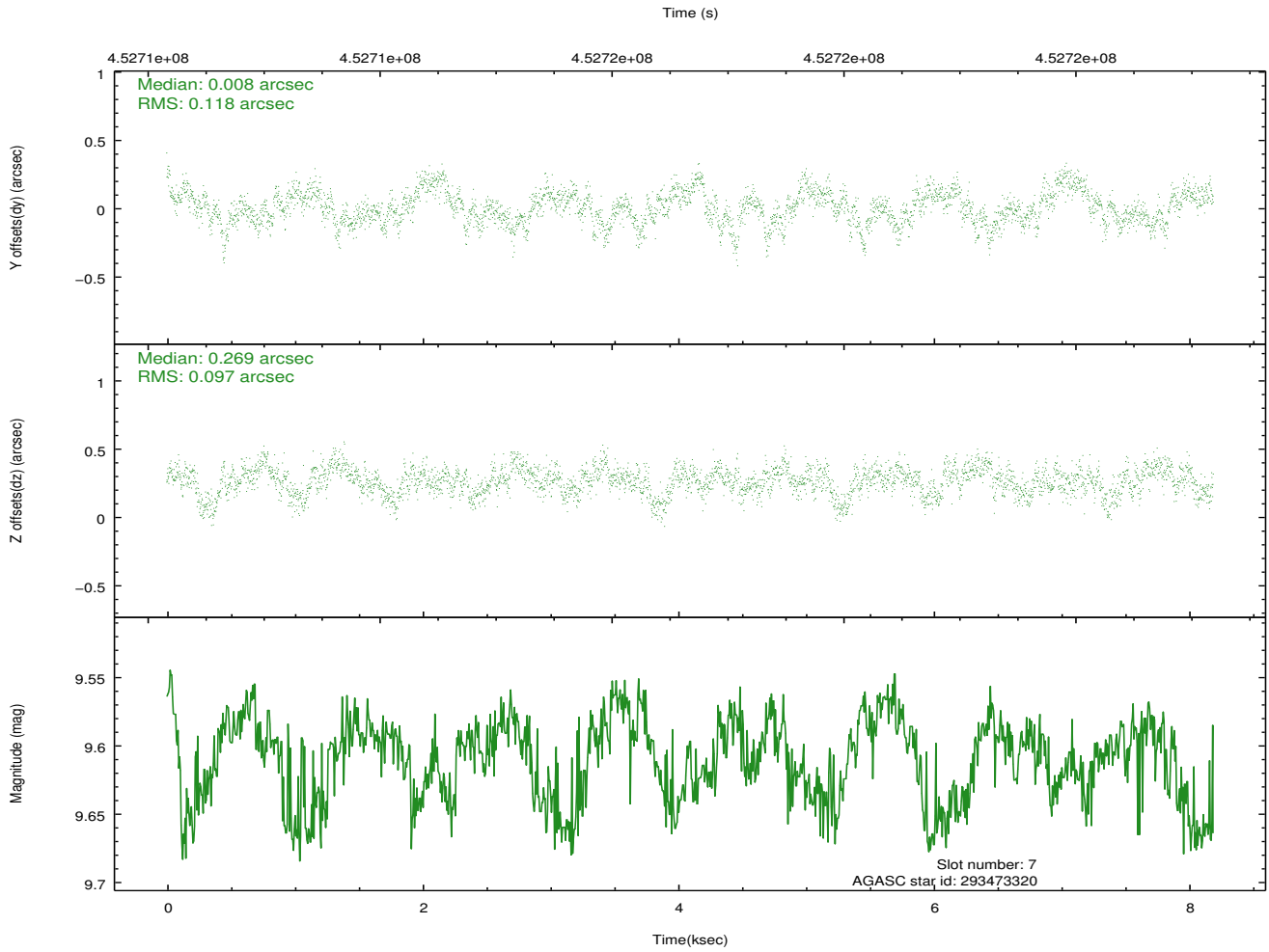
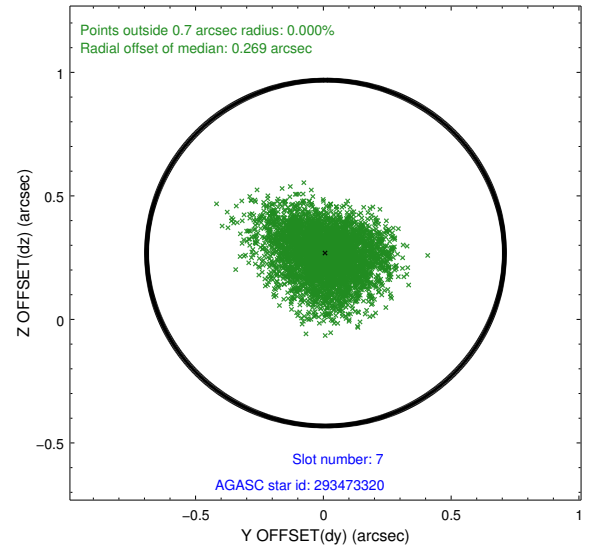
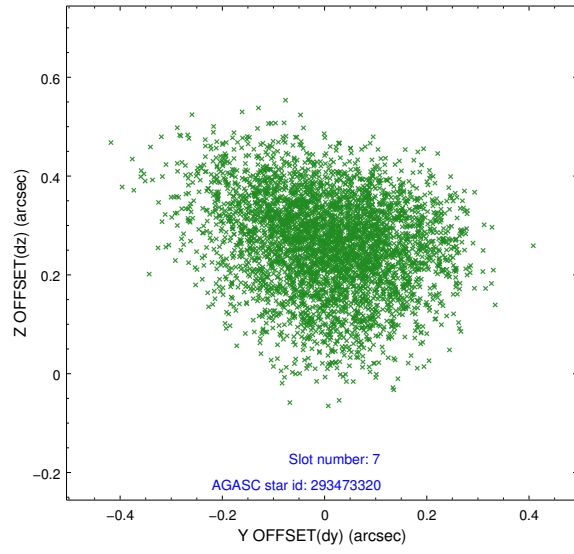
2.4.3 Slot 5



2.4.4 Slot 6

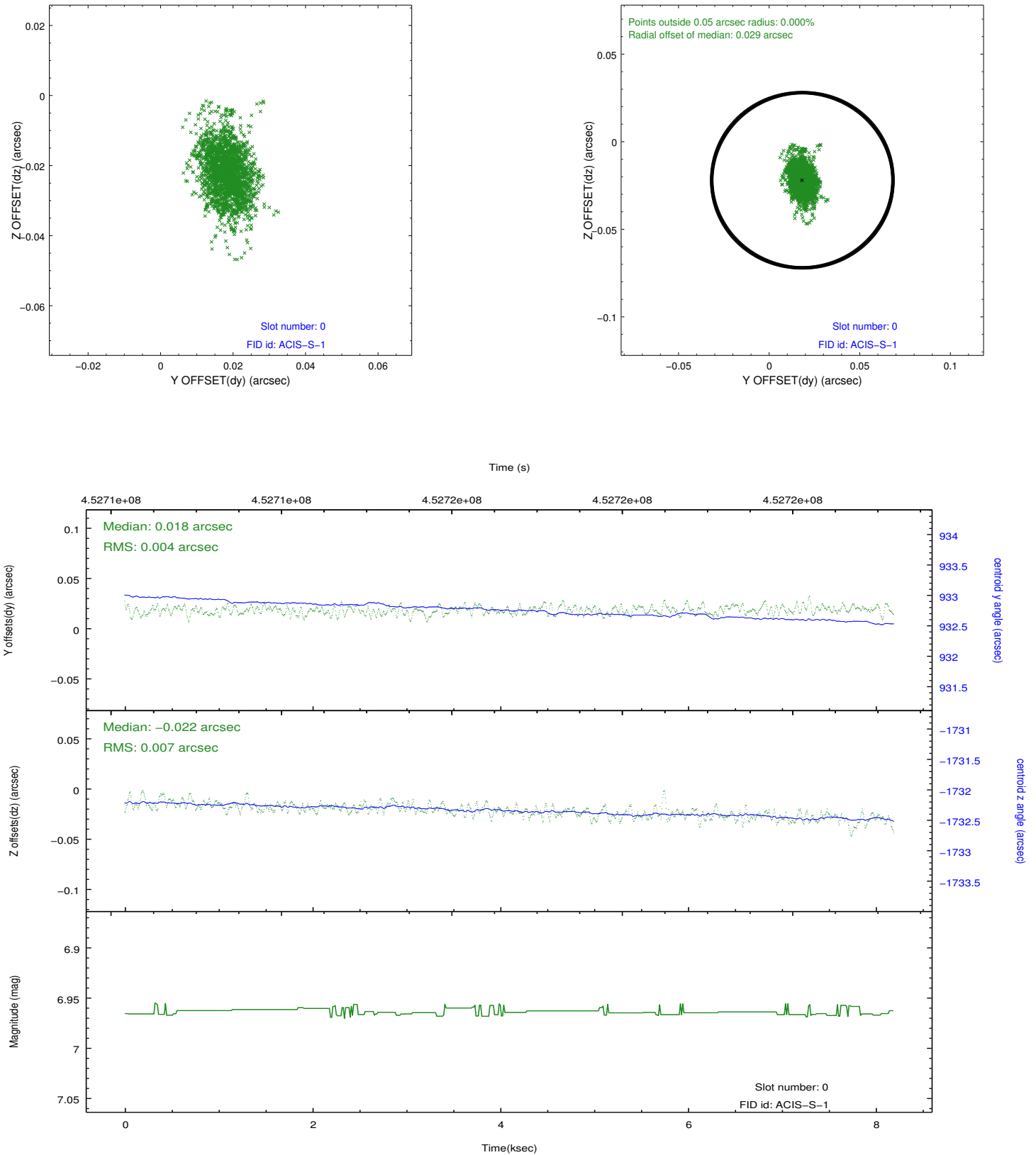


2.4.5 Slot 7

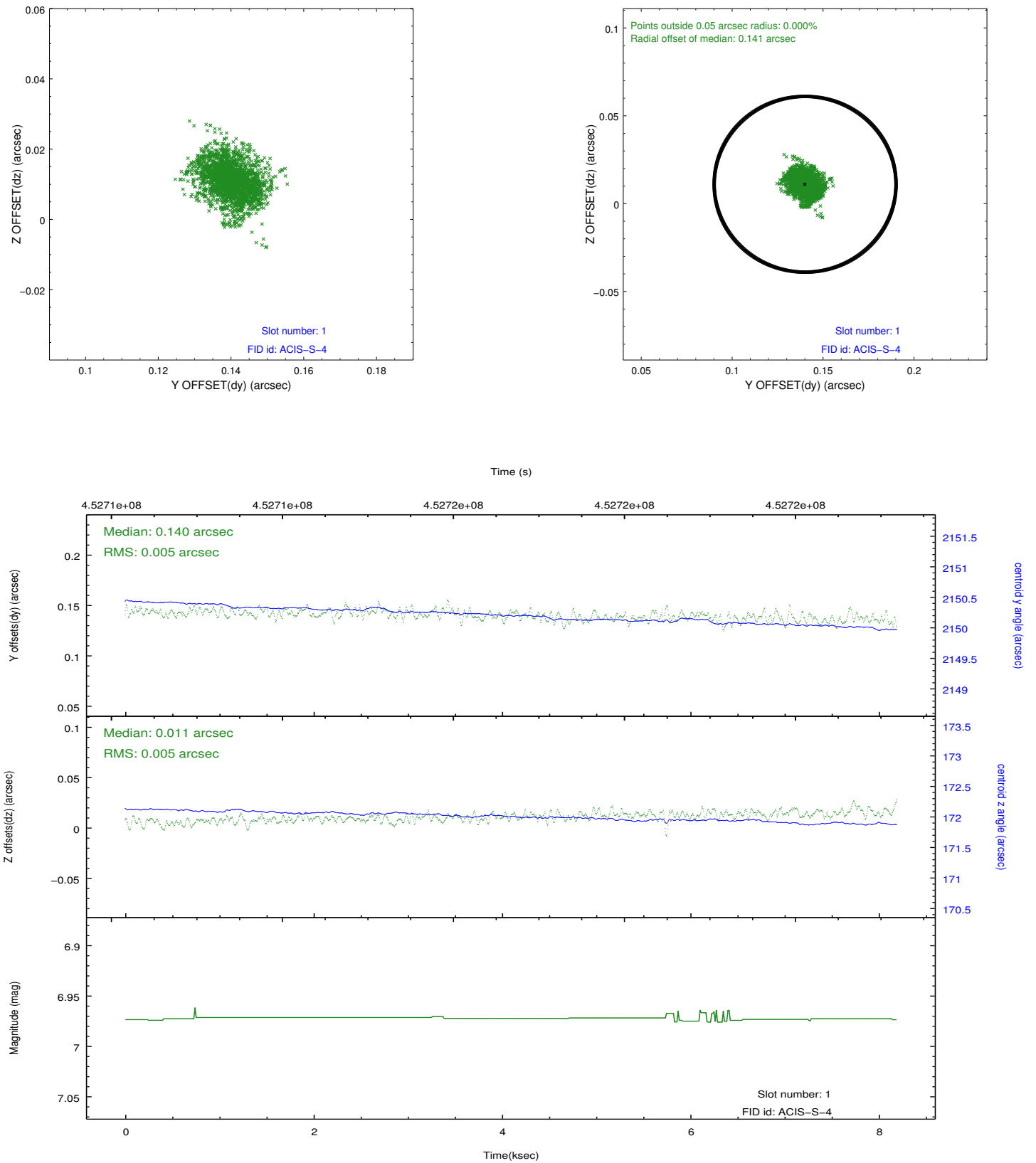


2.5 FID Slots

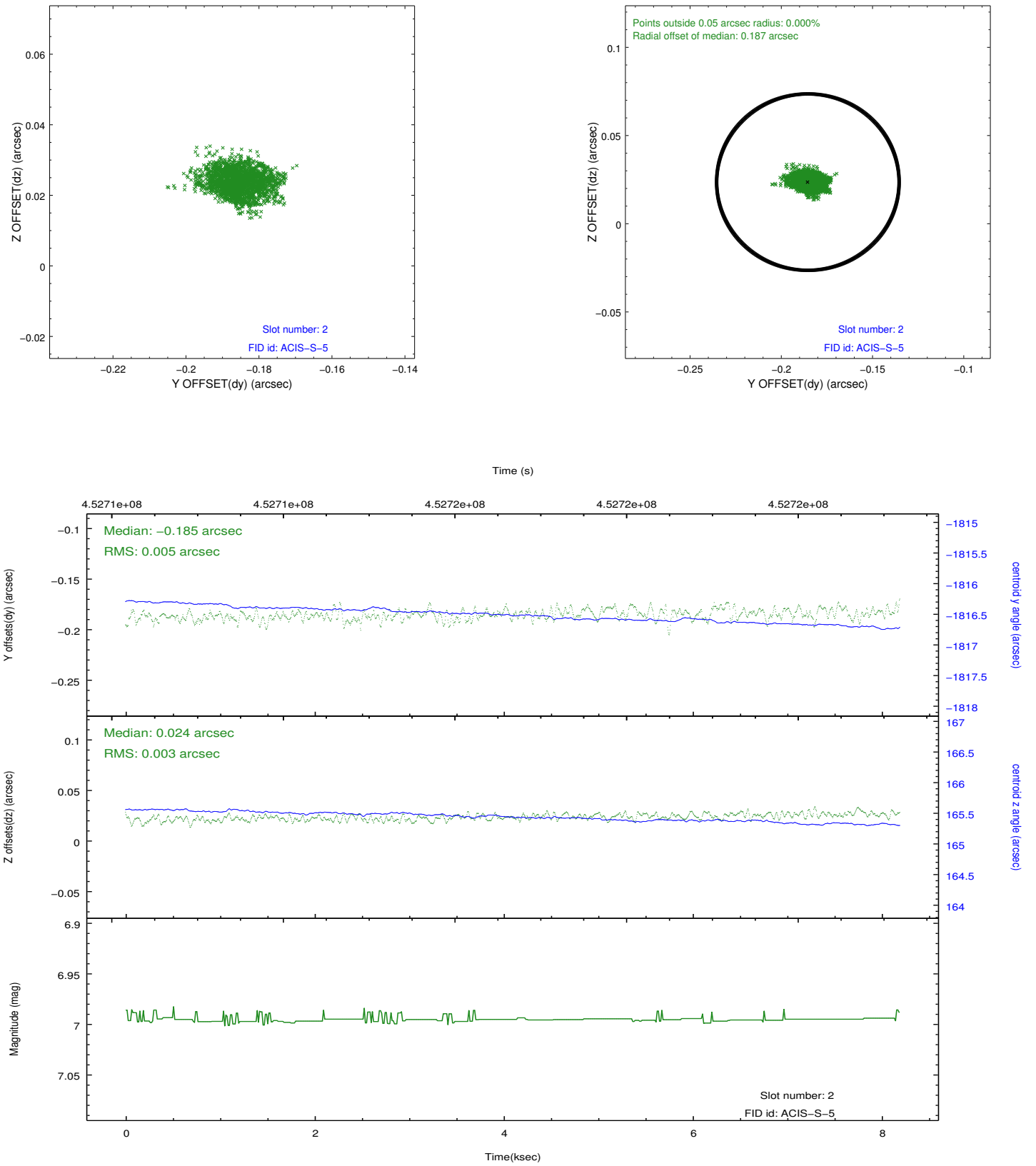
2.5.1 Slot 0



2.5.2 Slot 1



2.5.3 Slot 2



A Summary

A.1 Status

V&V Scientist	Jen Lauer
V&V Date (YYYY-MM-DD)	2012.05.07
V&V Edition	1
V&V Disposition and Status	OK
V&V Charge Time	8.0724000620842

A.2 Comments