

# V&V Reference Report

## L2 ASCDS Version : 8.4.4

Observation 13612 - L2 Version 1  
Chandra X-Ray Center

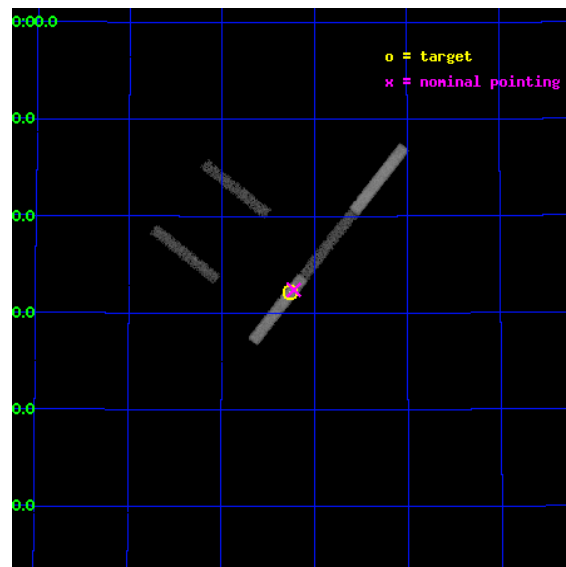
L2 Processing Date : May 19 2012

## Contents

<b>1</b>	<b>Front</b>	<b>2</b>
<b>2</b>	<b>OBI</b>	<b>3</b>
2.1	OBI . . . . .	3
2.1.1	Images . . . . .	3
2.1.2	Bias . . . . .	3
2.1.3	Parameters . . . . .	4
2.1.4	Events . . . . .	4
2.2	Compared Parameters . . . . .	5
2.3	Aspect . . . . .	6
2.4	Star Slots . . . . .	9
2.4.1	Slot 3 . . . . .	9
2.4.2	Slot 4 . . . . .	10
2.4.3	Slot 5 . . . . .	11
2.4.4	Slot 6 . . . . .	12
2.4.5	Slot 7 . . . . .	13
2.5	FID Slots . . . . .	14
2.5.1	Slot 0 . . . . .	14
2.5.2	Slot 1 . . . . .	15
2.5.3	Slot 2 . . . . .	16
<b>A</b>	<b>Summary</b>	<b>17</b>
A.1	Status . . . . .	17
A.2	Comments . . . . .	17

# 1 Front

seq_num	200766	Sequence number
obs_id	13612	Observation id
title	Measuring X-ray and UV Magnetic Activity on the Fast-rotating KO Dwarf KIC_11560431	Proposal title
observer	Dr. Alexander Brown	Principal investigator
object	KIC11560431	Source name
dtcycle	0	&#160
cycle	P	events from which exps? Prim/Second/Both
ra_targ	292.565833	Observer's specified target RA [deg]
dec_targ	49.535806	Observer's specified target Dec [deg]
ra_nom	292.55567033451	Nominal RA [deg]
dec_nom	49.540078416317	Nominal Dec [deg]
roll_nom	128.2458781636	Nominal Roll [deg]
revision	1	Processing version of data
ontime	25078.899572849	Sum of GTIs [s]
livetime	23689.989340649	Livetime [s]
ontime2	25078.899572849	Sum of GTIs [s]
ontime3	25078.899572849	Sum of GTIs [s]
ontime5	25078.899572849	Sum of GTIs [s]
ontime6	25078.899572849	Sum of GTIs [s]
ontime7	25078.899572849	Sum of GTIs [s]
l2events	36891	Number of level 2 events

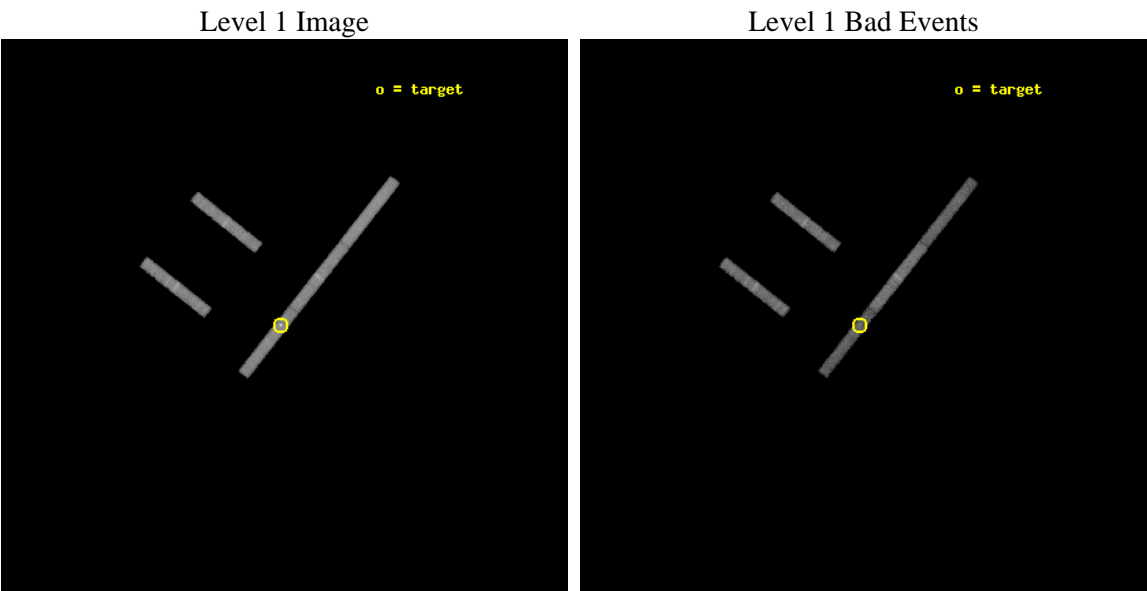




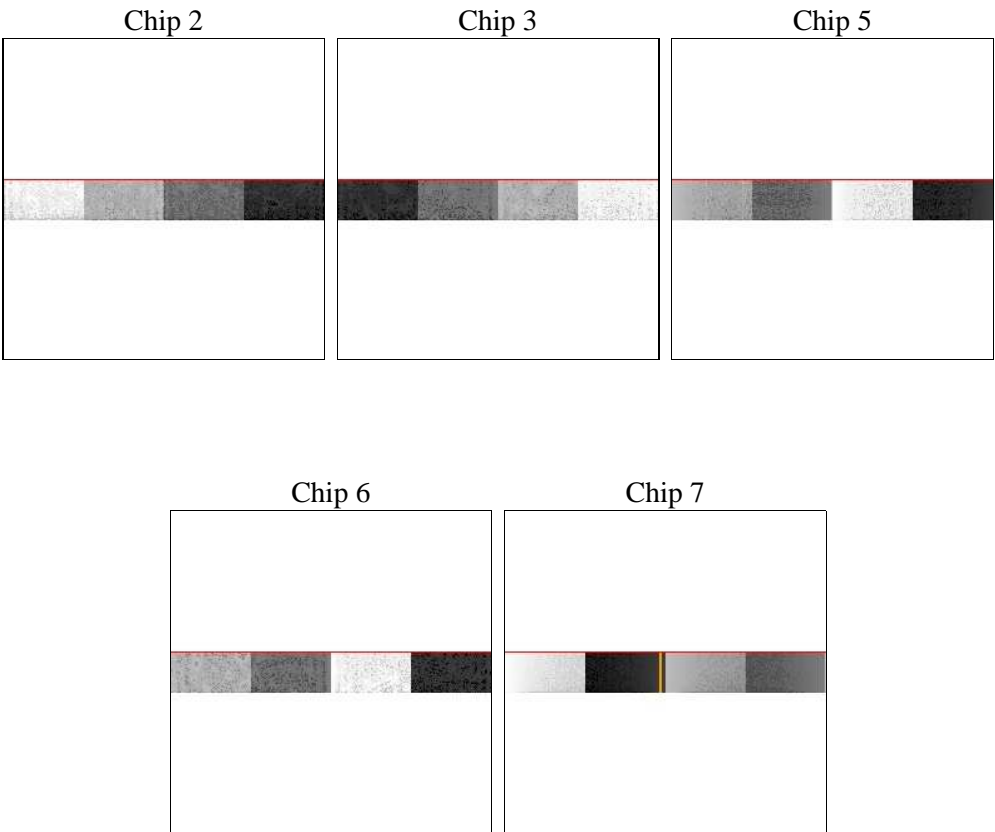
# 2 OBI

## 2.1 OBI

### 2.1.1 Images



### 2.1.2 Bias



Chip 6



Chip 7



### 2.1.3 Parameters

obi_num	1	Obi number	sched_exp_time	25000.000000	[s] Scheduled observation exposure time
ascdsver	8.4.4	Processing system revision	ontime	25078.899572849	Sum of GTIs [s]
caldsver	4.4.9	&#160	ontime2	25078.899572849	Sum of GTIs [s]
date	2012-05-19T18:54:18	Date and time of file creation	ontime3	25078.899572849	Sum of GTIs [s]
revision	1	Processing version of data	ontime5	25078.899572849	Sum of GTIs [s]
			ontime6	25078.899572849	Sum of GTIs [s]
			ontime7	25078.899572849	Sum of GTIs [s]
			l1events	124970	Number of level 1 events

### 2.1.4 Events

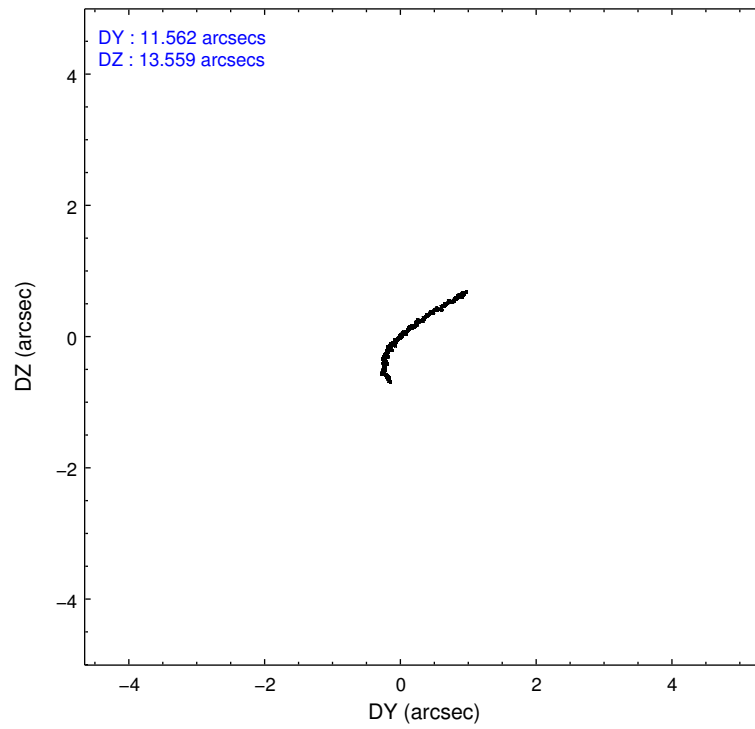
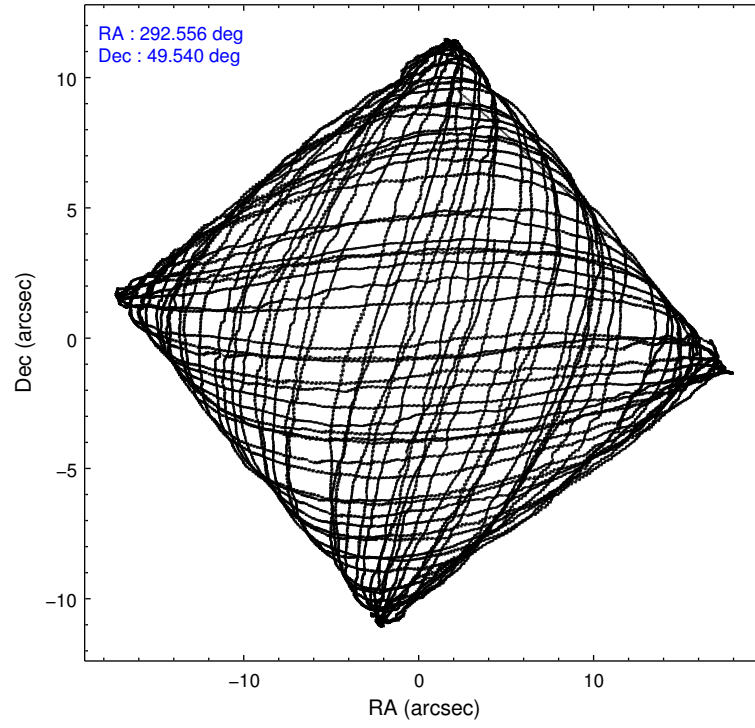
	ccd 2	ccd 3	ccd 5	ccd 6	ccd 7
level 1 events	22668	22477	26597	24696	28532
rejected events	19988	20147	12531	21888	10489
rejected %	88%	89%	47%	88%	36%

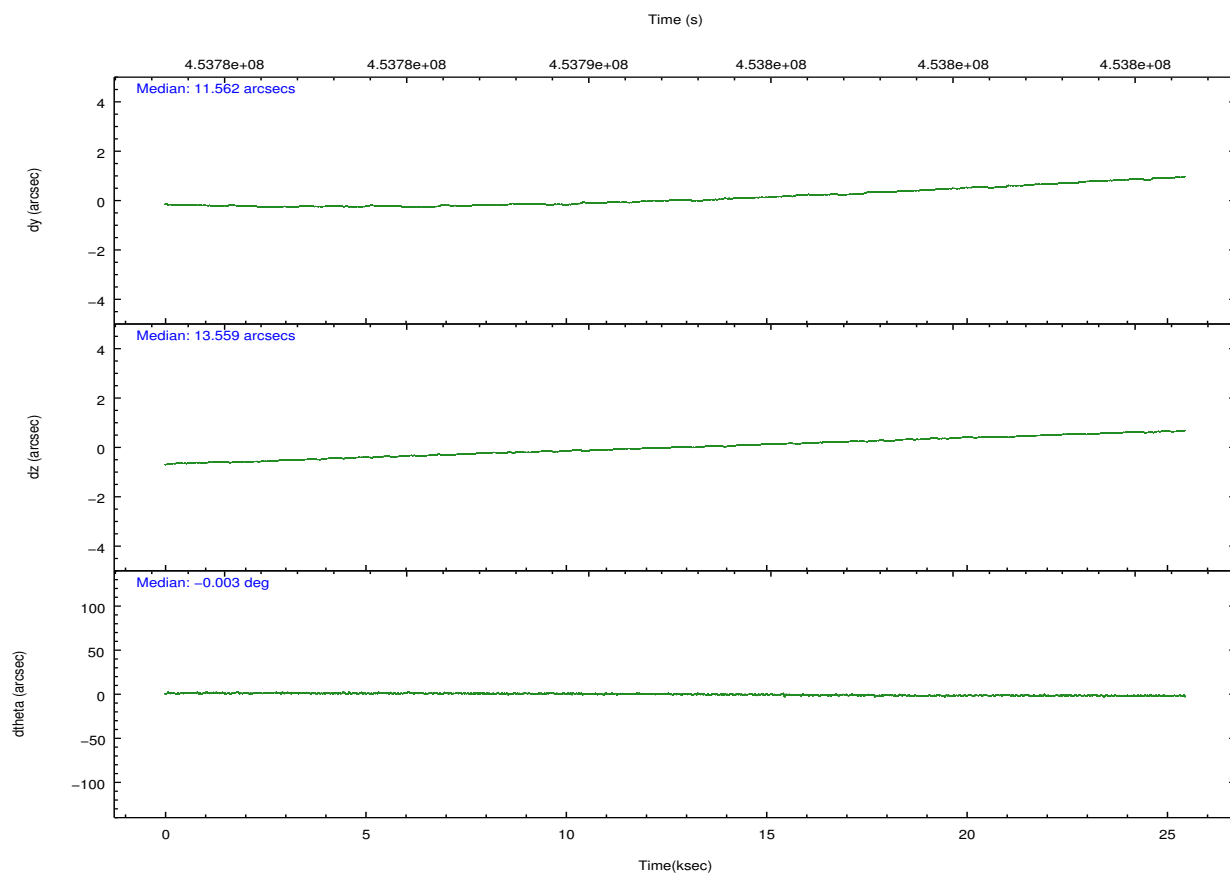
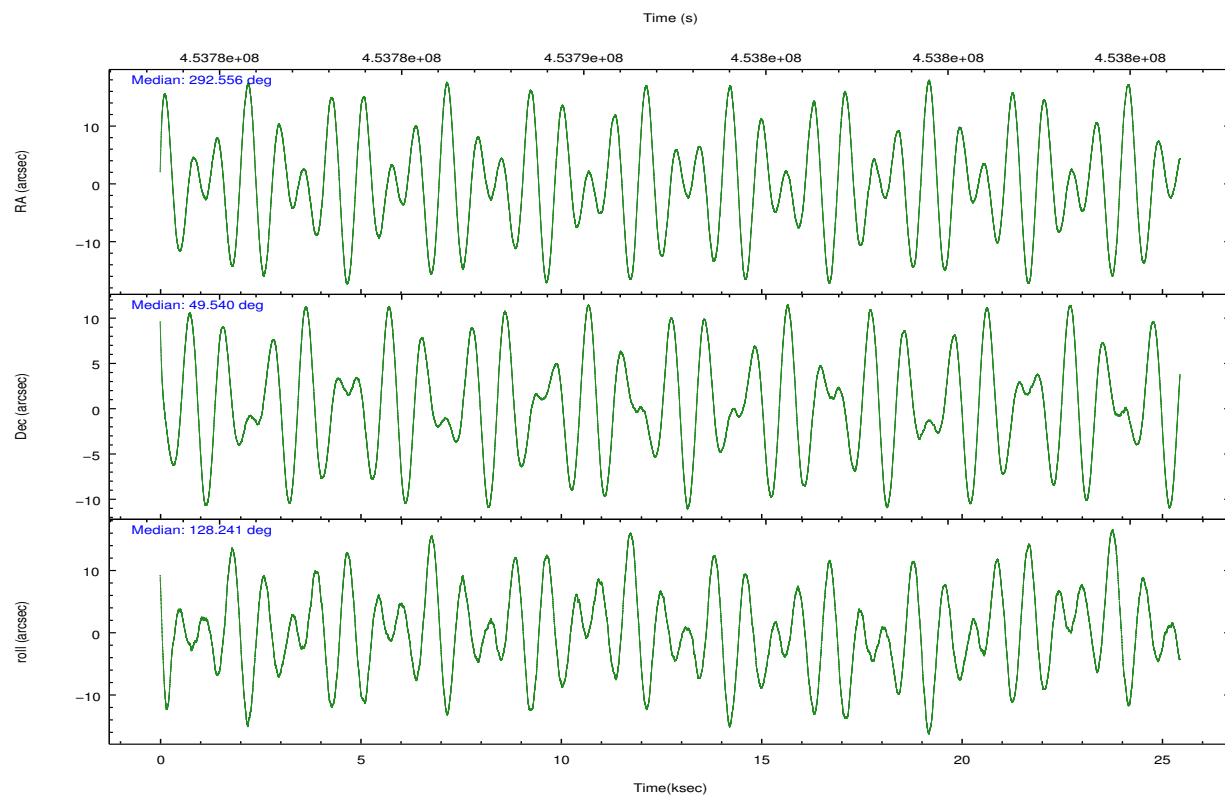
	ccd 2	ccd 3	ccd 5	ccd 6	ccd 7
grade 0 events	894	728	1178	866	3978
	3%	3%	4%	3%	13%
grade 1 events	6	9	70	15	69
	0%	0%	0%	0%	0%
grade 2 events	521	415	4384	521	4224
	2%	1%	16%	2%	14%
grade 3 events	394	444	1003	473	2112
	1%	1%	3%	1%	7%
grade 4 events	475	383	906	463	2100
	2%	1%	3%	1%	7%
grade 5 events	527	600	2255	722	2274
	2%	2%	8%	2%	7%
grade 6 events	396	360	6596	485	5629
	1%	1%	24%	1%	19%
grade 7 events	19455	19538	10205	21151	8146
	85%	86%	38%	85%	28%

## 2.2 Compared Parameters

Parameter	Planned	Actual	Parameter	Planned	Actual
Instrument	ACIS	ACIS	Obspar format version number	7	7
Detector	ACIS-23567	ACIS-23567	Obspar file type	PREDICTED	ACTUAL
Grating	NONE	NONE	Obspar update status	NONE	UPDATED
Data mode	VFAINT	VFAINT	Number of optional ACIS chips dropped	0	0
Observation mode	POINTING	POINTING	On-chip summing requested	N	N
[deg] Pointing RA	292.594982	292.5556703345087	Subarray requested	CUSTOM	1/8
[deg] Pointing Dec	49.530308	49.54007841631692	Subarray start row	448	448
[deg] Pointing Roll	128.059335	128.2458781636027	Subarray row count	128	128
[mm] SIM focus pos	-0.684267	-0.6828225247311905	Alternating exposures requested	N	N
[mm] SIM defocus	0	0.001444936568705701	[s] Primary exposure time	0.000000	0.7
[mm] SIM translation stage pos	-190.132523	-190.1400660498719			
[mm] SIM translation stage offset	0	0.00754346686406393			
[s] Observation start time (MET)	453780084.184000	453778858.75752			
Observation start date	2012-05-19T02:00:18	2012-05-19T01:40:58			
[s] Observation end time (MET)	453805084.184000	453806151.43397			
Observation end date	2012-05-19T08:56:58	2012-05-19T09:15:51			
Read mode	TIMED	TIMED			

## 2.3 Aspect



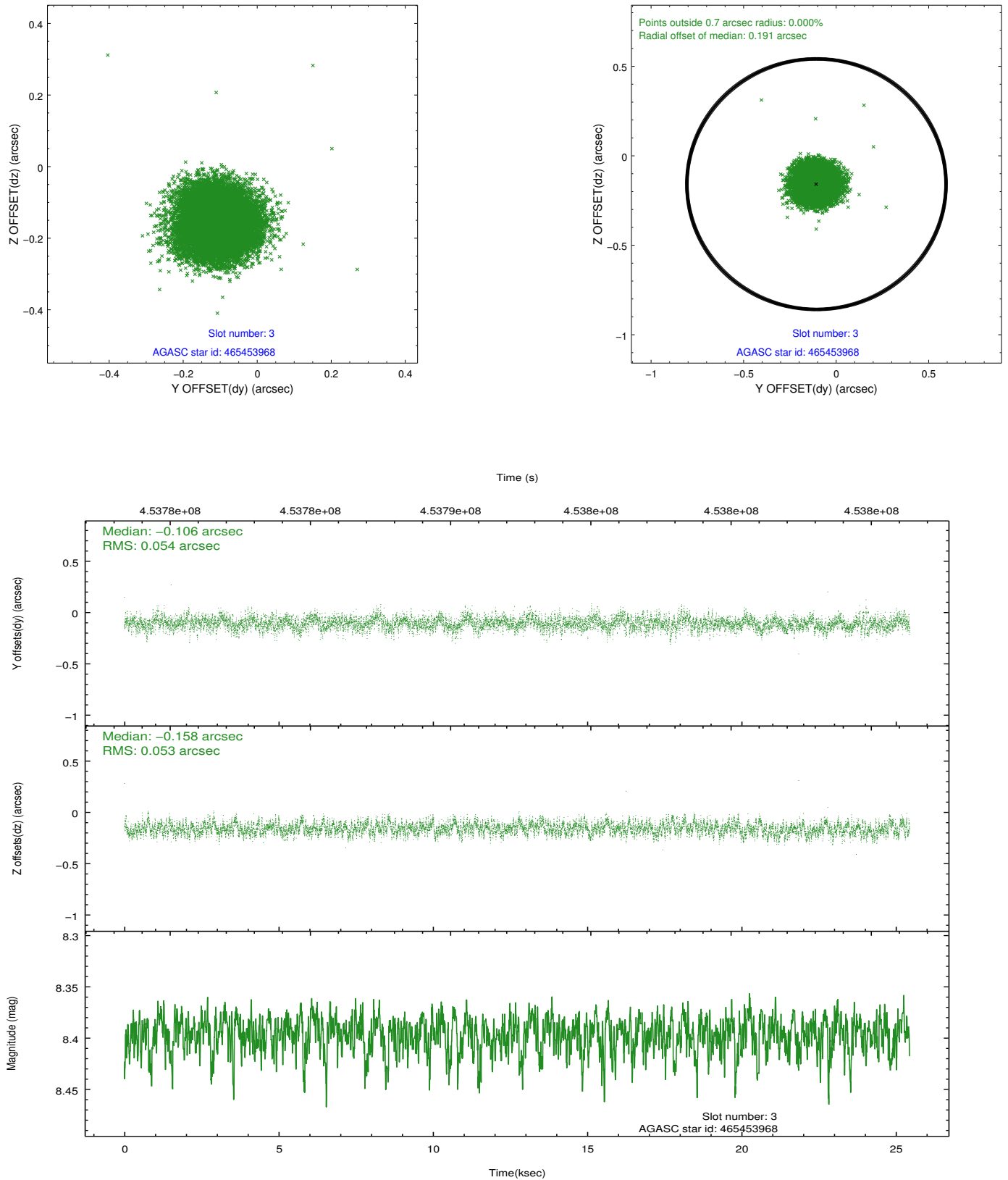


### Slot Statistics

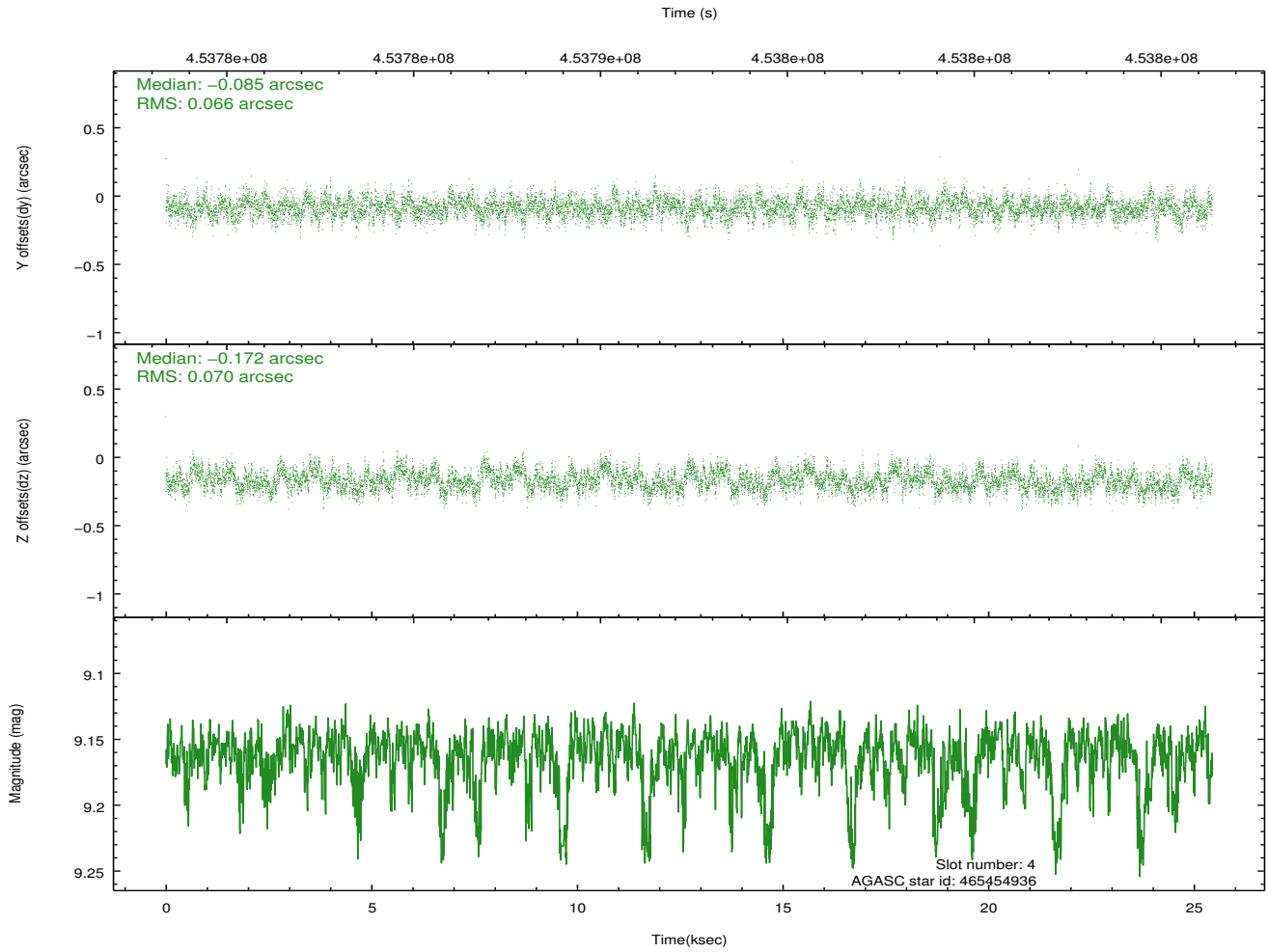
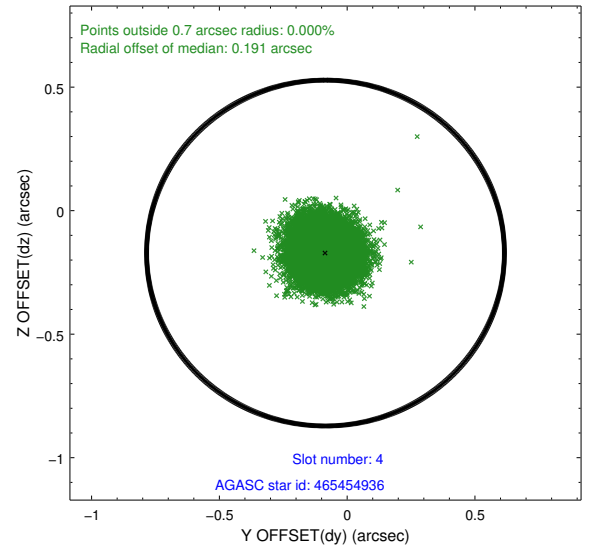
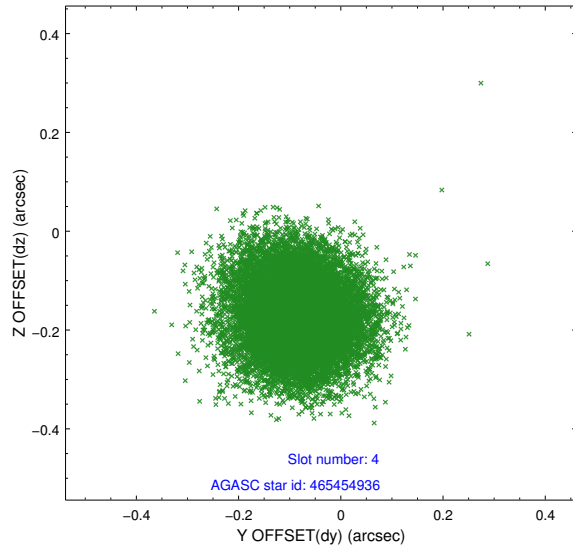
slot	status	id	mag	n_pts	med_dy	med_dz	dr1	dr2	ra	dec	mean_y	mean_z
0	FID	ACIS-S-1	7.06	6206	0.054	0.011	0.014	0.024	0.000000	0.000000	931.44	-1730.56
1	FID	ACIS-S-2	6.96	6207	-0.143	-0.055	0.011	0.018	0.000000	0.000000	-764.60	-1735.22
2	FID	ACIS-S-4	7.05	6207	0.063	0.050	0.008	0.013	0.000000	0.000000	2148.71	173.48
3	GUIDE	465453968	8.40	12407	-0.106	-0.158	0.081	0.128	291.886709	49.256542	256.27	1912.87
4	GUIDE	465454936	9.16	12406	-0.085	-0.172	0.102	0.164	291.957589	49.517912	888.32	1196.80
5	GUIDE	467149760	7.53	12413	-0.066	0.027	0.098	0.155	292.760100	50.196870	1655.64	-1778.77
6	GUIDE	467152344	8.41	12411	0.115	-0.123	0.098	0.155	292.923630	49.107442	-1674.27	327.13
7	GUIDE	467162952	9.32	12396	0.138	0.424	0.162	0.239	293.577109	49.606260	-1184.95	-1981.27

## 2.4 Star Slots

### 2.4.1 Slot 3

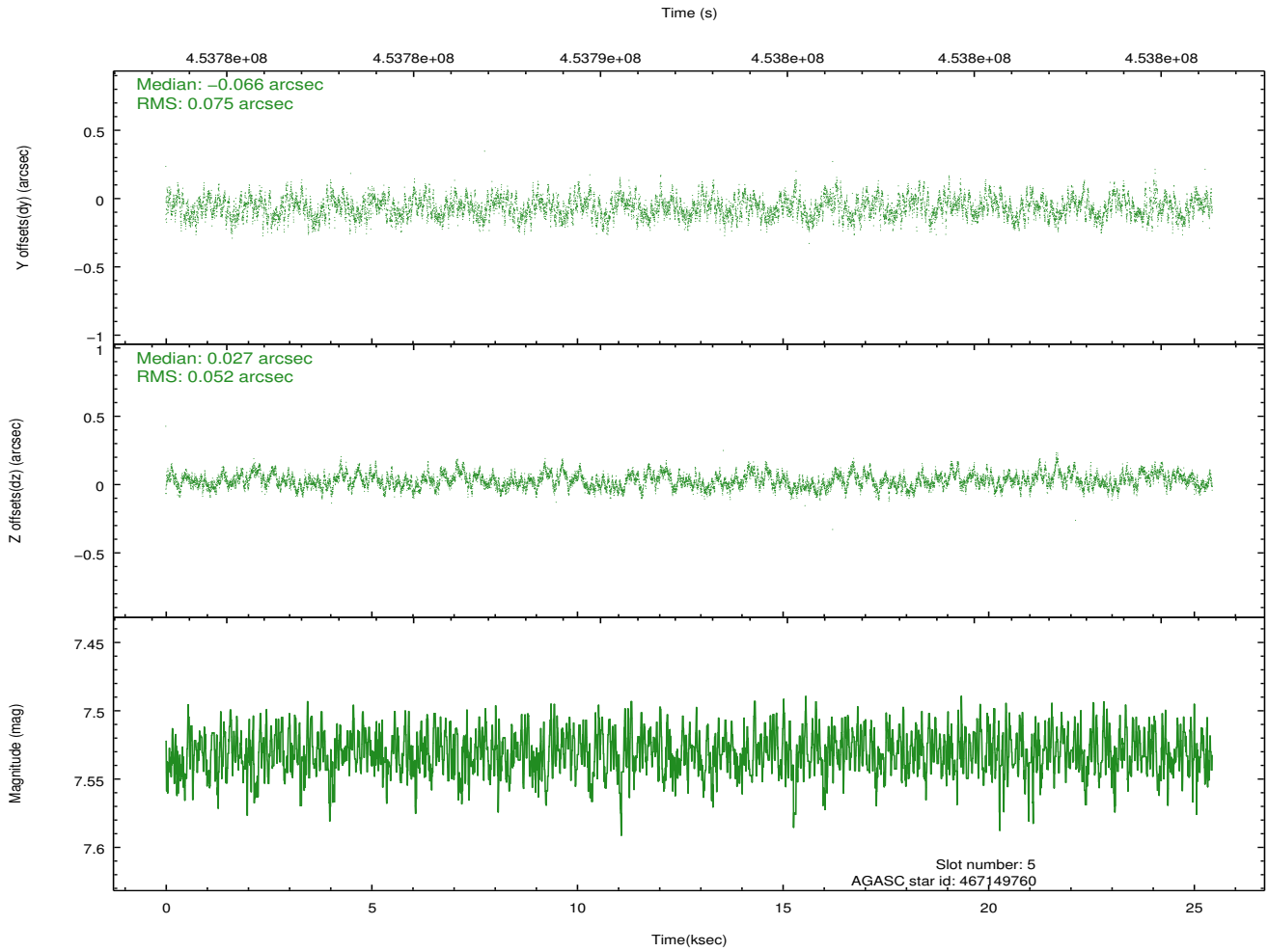
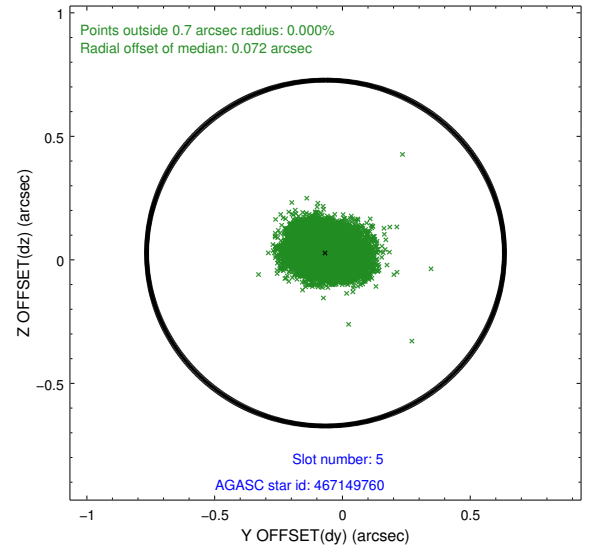
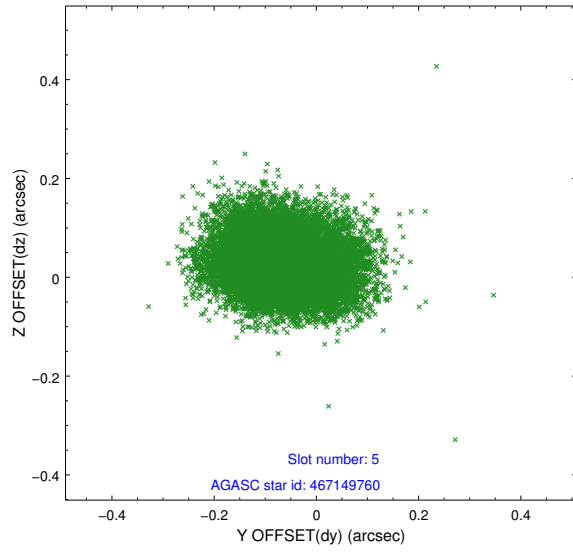


## 2.4.2 Slot 4

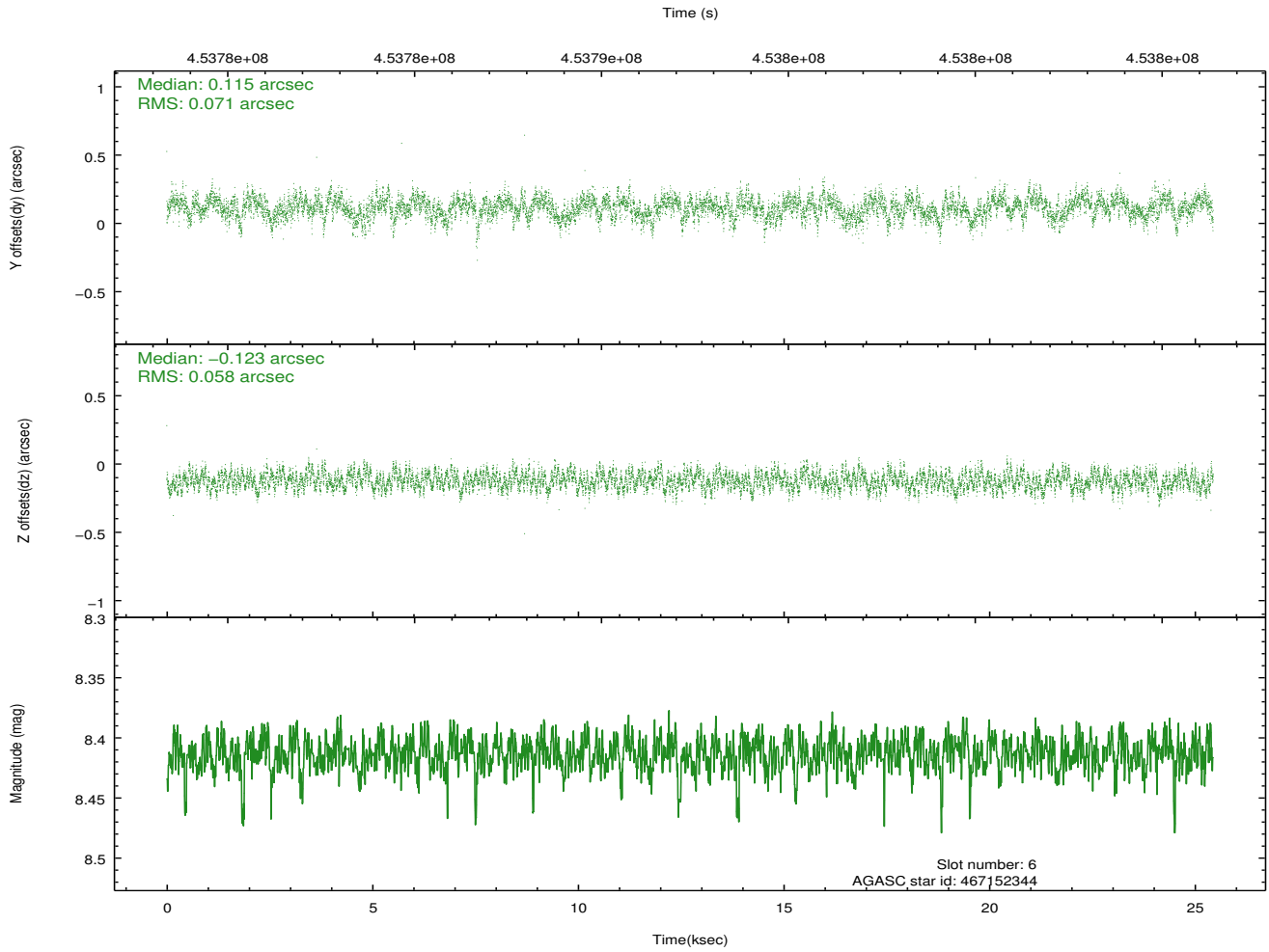
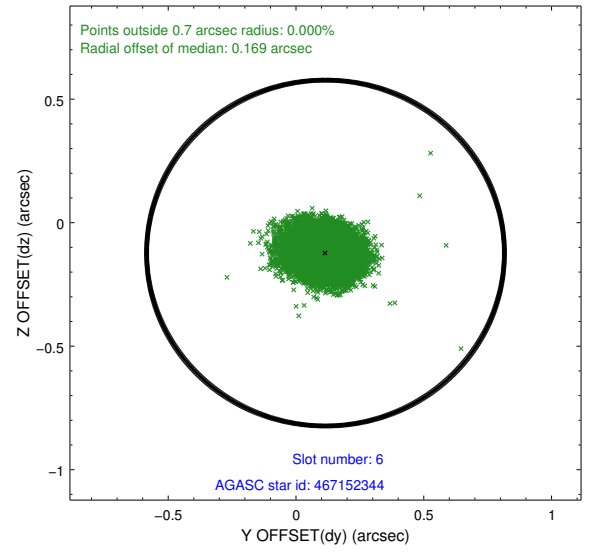
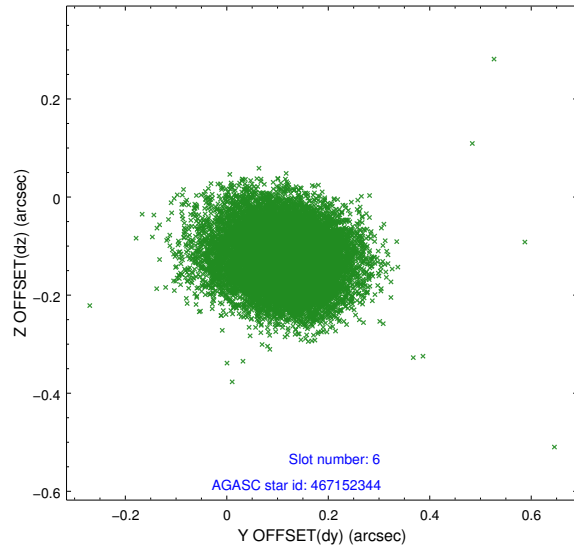




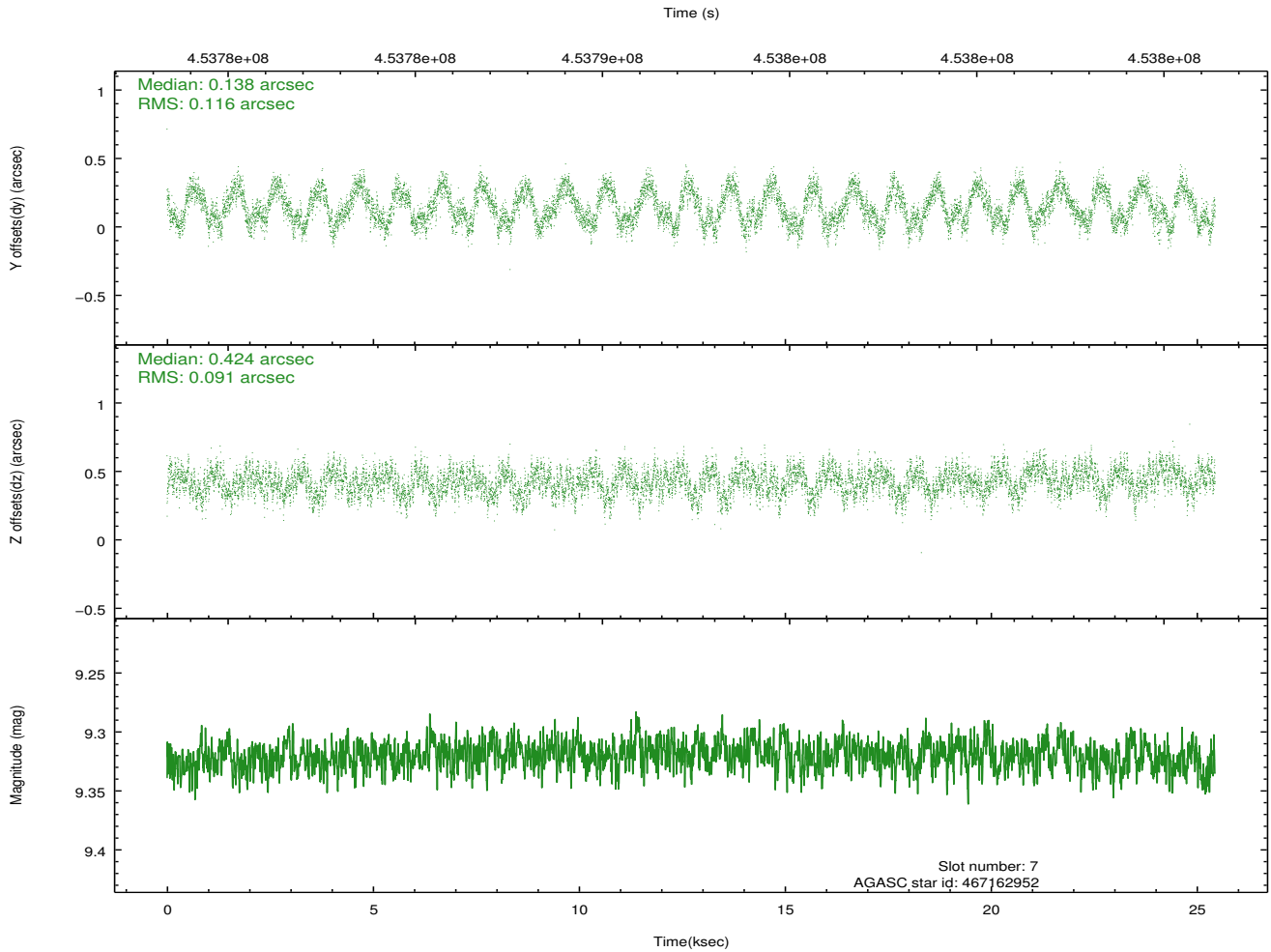
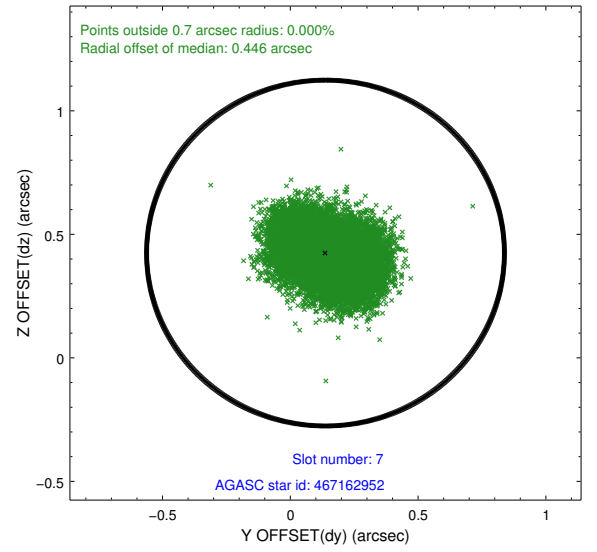
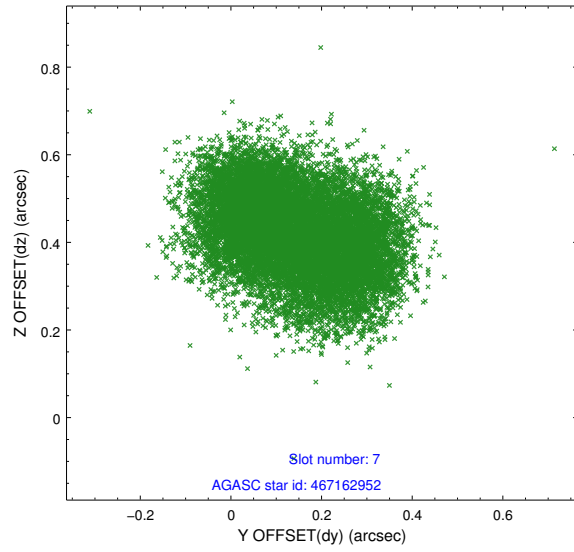
### 2.4.3 Slot 5



## 2.4.4 Slot 6

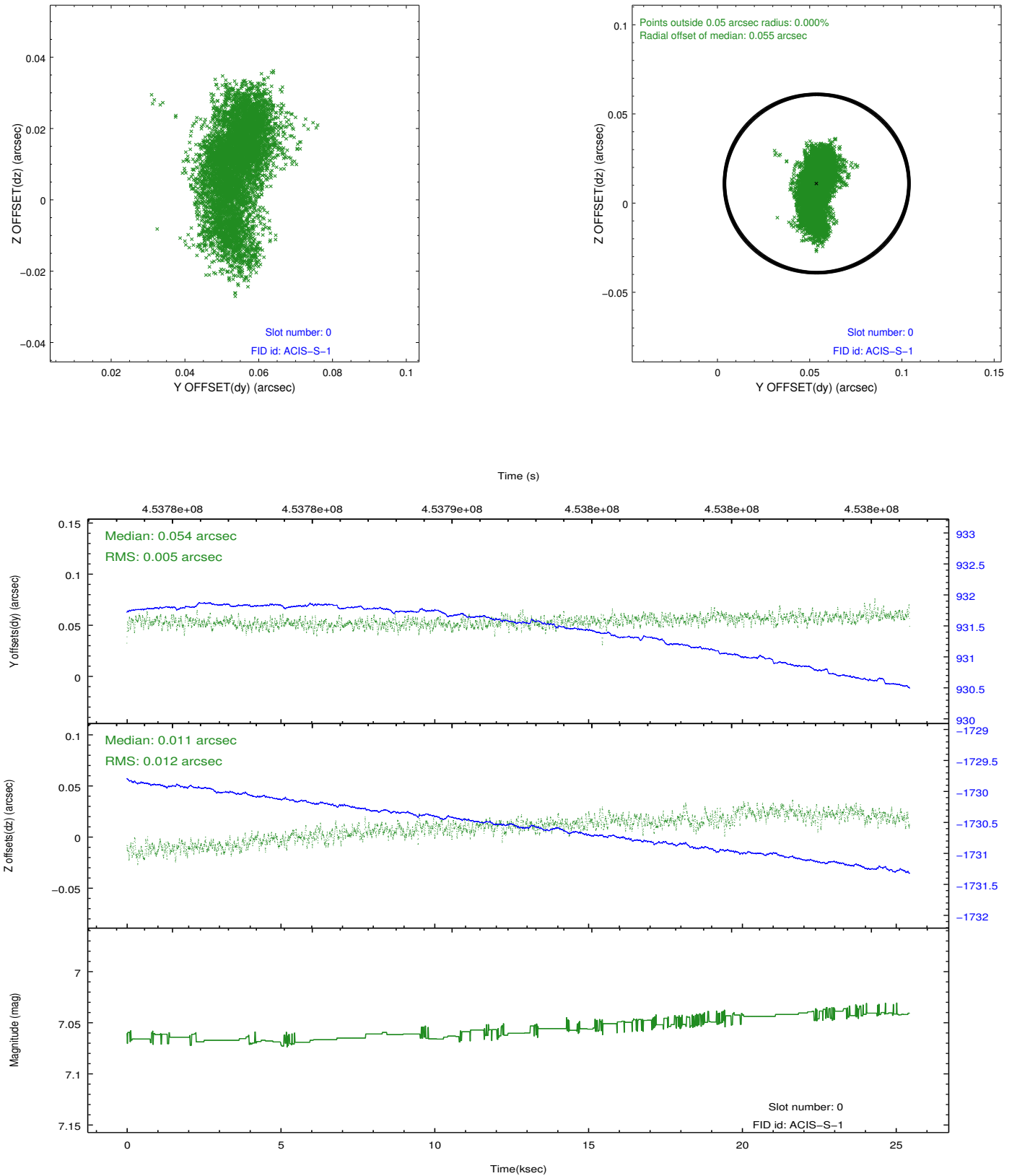


## 2.4.5 Slot 7

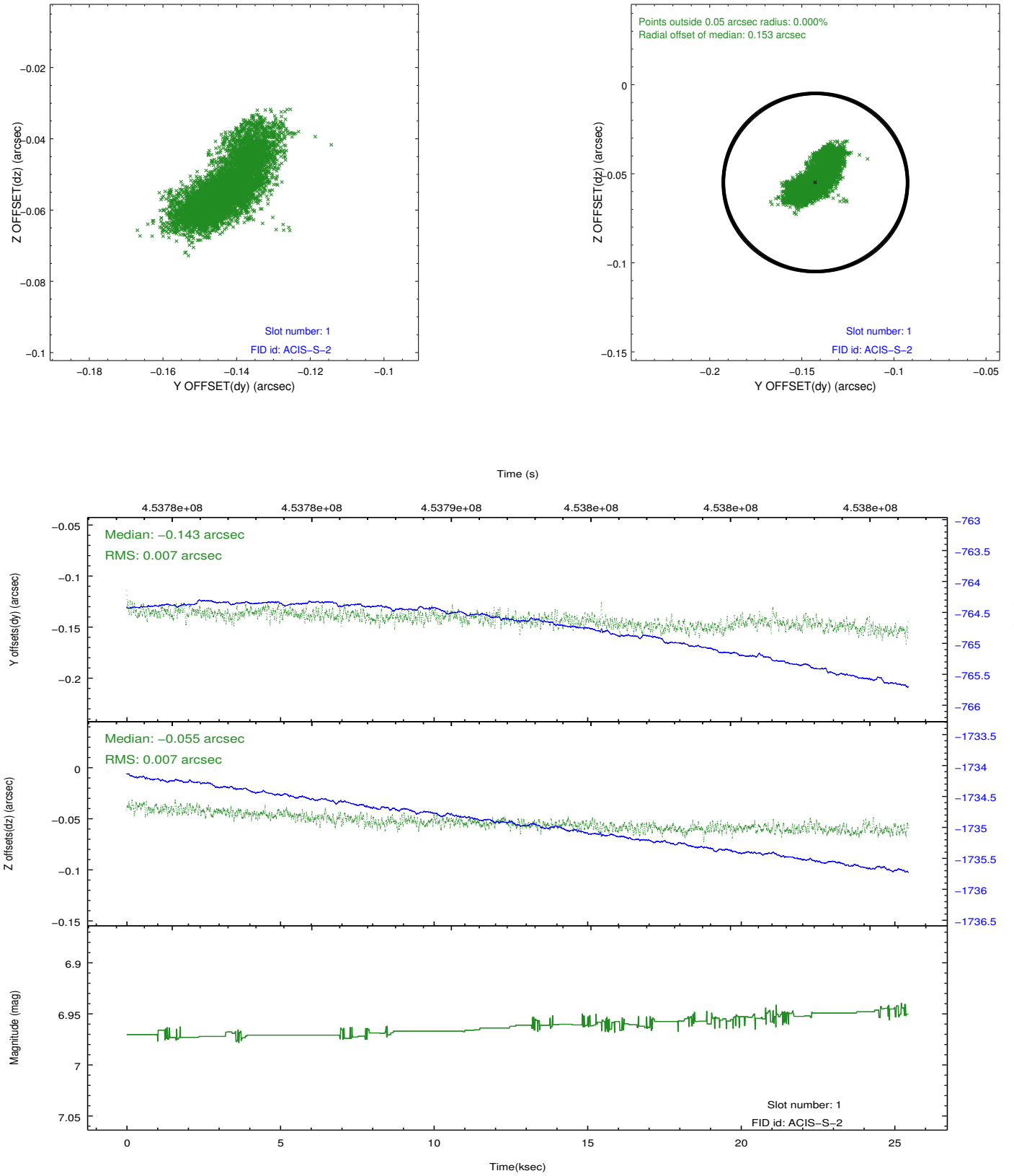


## 2.5 FID Slots

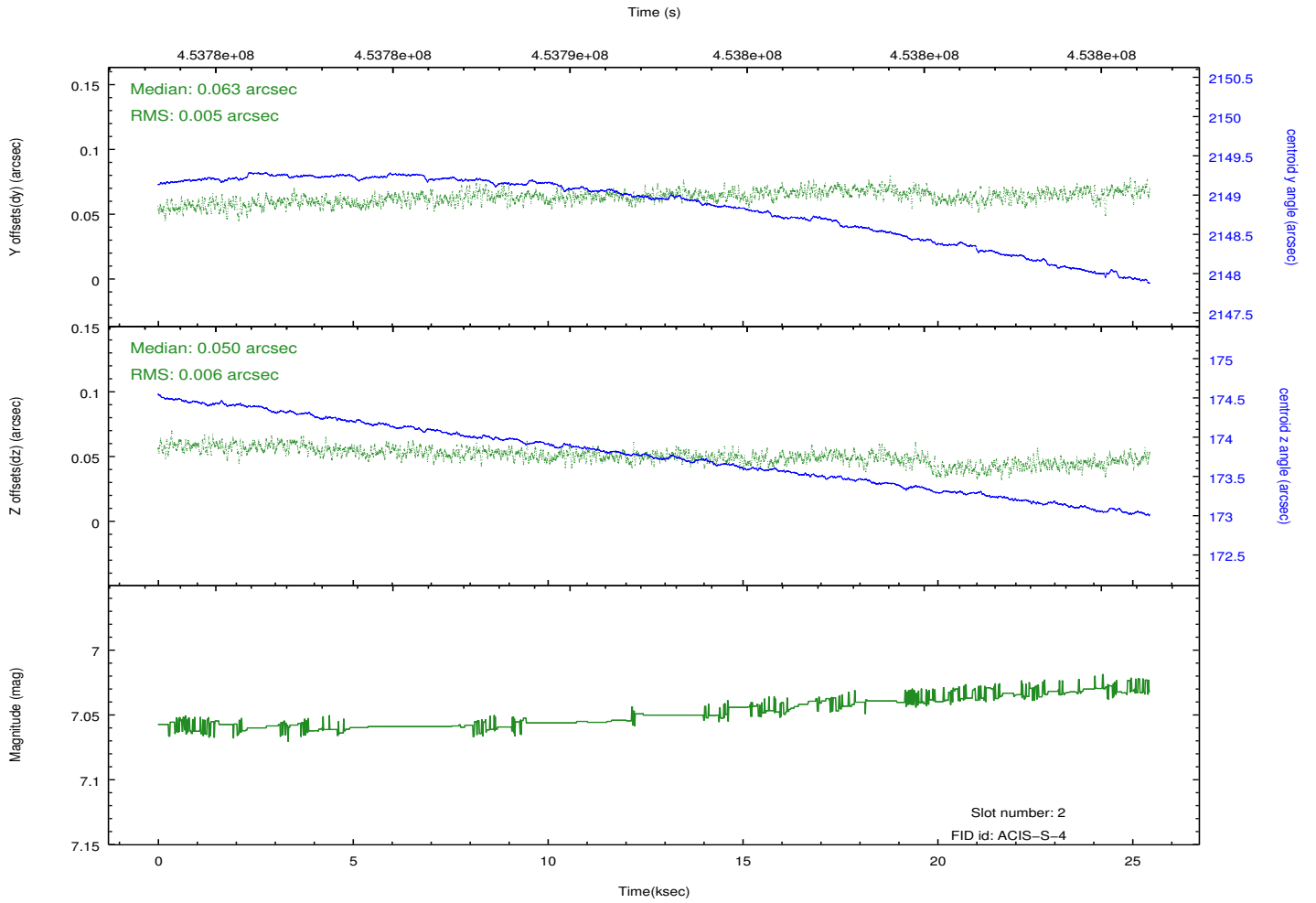
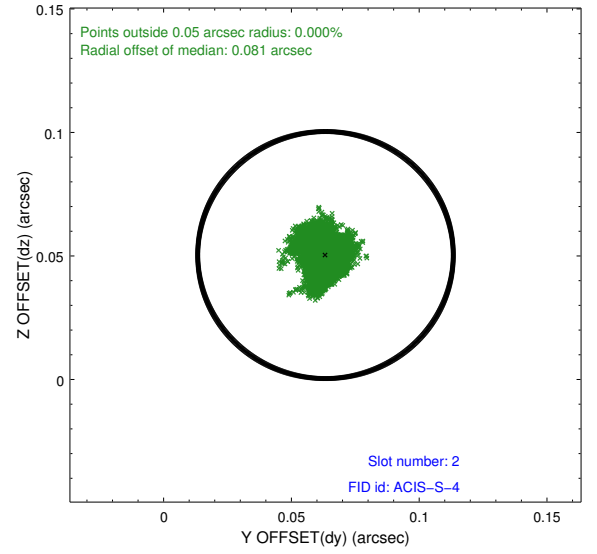
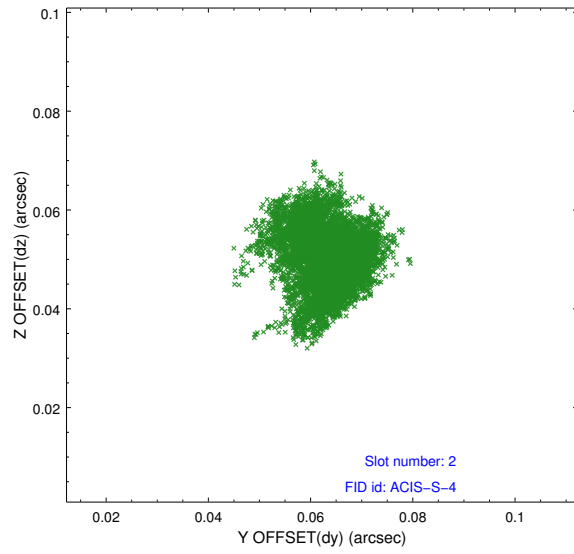
### 2.5.1 Slot 0



## 2.5.2 Slot 1



### 2.5.3 Slot 2



## A Summary

### A.1 Status

V&V Scientist	Joy Nichols
V&V Date (YYYY-MM-DD)	2012.05.21
V&V Edition	1
V&V Disposition and Status	OK
V&V Charge Time	25.078899572849

### A.2 Comments

Joint proposal with HST.