

V&V Reference Report

L2 ASCDS Version : 8.4.3

Observation 13431 - L2 Version 2
Chandra X-Ray Center

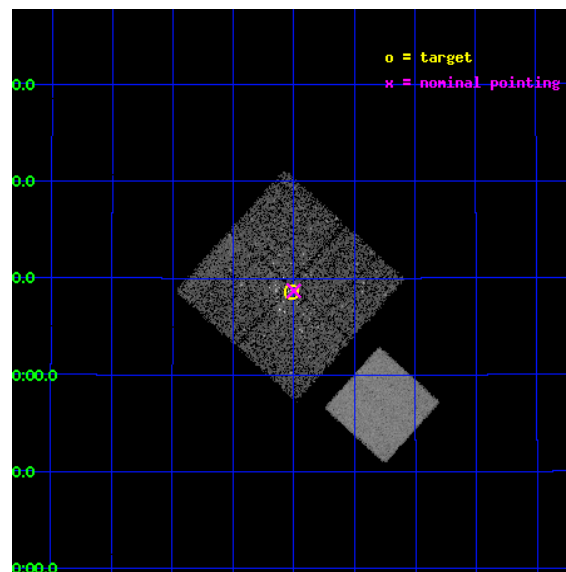
L2 Processing Date : Feb 26 2012

Contents

1	Front	2
2	OBI	3
2.1	OBI	3
2.1.1	Images	3
2.1.2	Bias	3
2.1.3	Parameters	4
2.1.4	Events	4
2.2	Compared Parameters	5
2.3	Aspect	6
2.4	Star Slots	9
2.4.1	Slot 3	9
2.4.2	Slot 4	10
2.4.3	Slot 5	11
2.4.4	Slot 6	12
2.4.5	Slot 7	13
2.5	FID Slots	14
2.5.1	Slot 0	14
2.5.2	Slot 1	15
2.5.3	Slot 2	16
A	Summary	17
A.1	Status	17
A.2	Comments	17

1 Front

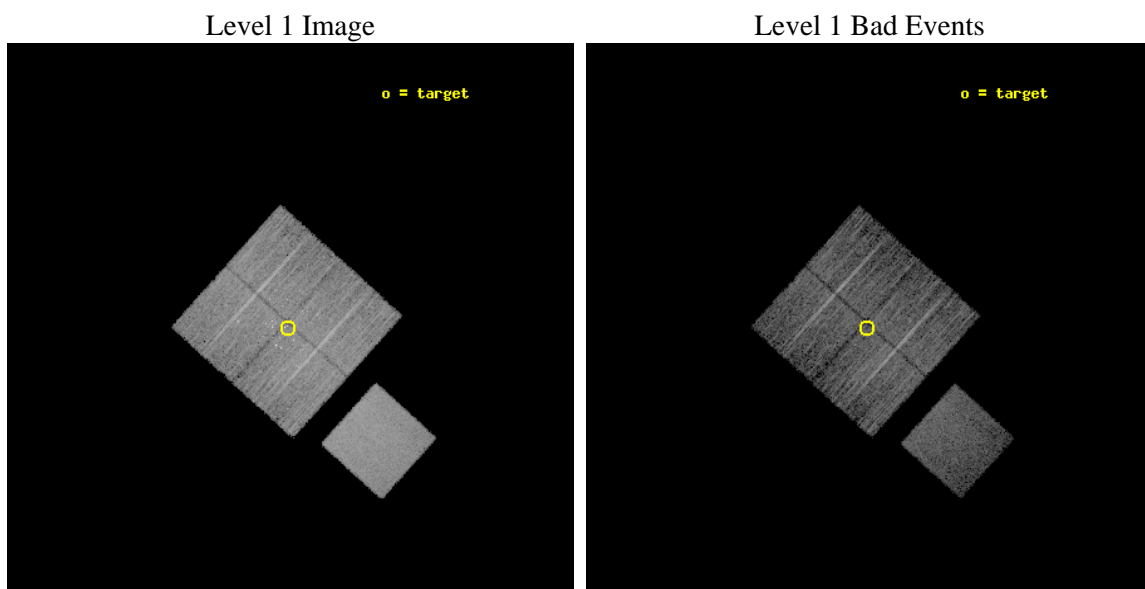
seq_num	200753	Sequence number
obs_id	13431	Observation id
title	Connecting Young Stellar Object Variability Across the Great Observatories: A Combined Spitzer and Chandra Study	Proposal title
observer	Dr. Kevin Flaherty	Principal investigator
object	IC 348	Source name
dtcycle	0	
cycle	P	events from which exps? Prim/Second/Both
ra_targ	56.13125	Observer's specified target RA [deg]
dec_targ	32.142694	Observer's specified target Dec [deg]
ra_nom	56.124968067614	Nominal RA [deg]
dec_nom	32.144901170377	Nominal Dec [deg]
roll_nom	132.1052614158	Nominal Roll [deg]
revision	2	Processing version of data
ontime	10047.100077271	Sum of GTIs [s]
livetime	9915.8273181944	Livetime [s]
ontime0	10047.100077271	Sum of GTIs [s]
ontime1	10047.100077271	Sum of GTIs [s]
ontime2	10043.959087074	Sum of GTIs [s]
ontime3	10047.100077271	Sum of GTIs [s]
ontime7	10047.100077271	Sum of GTIs [s]
l2events	63318	Number of level 2 events



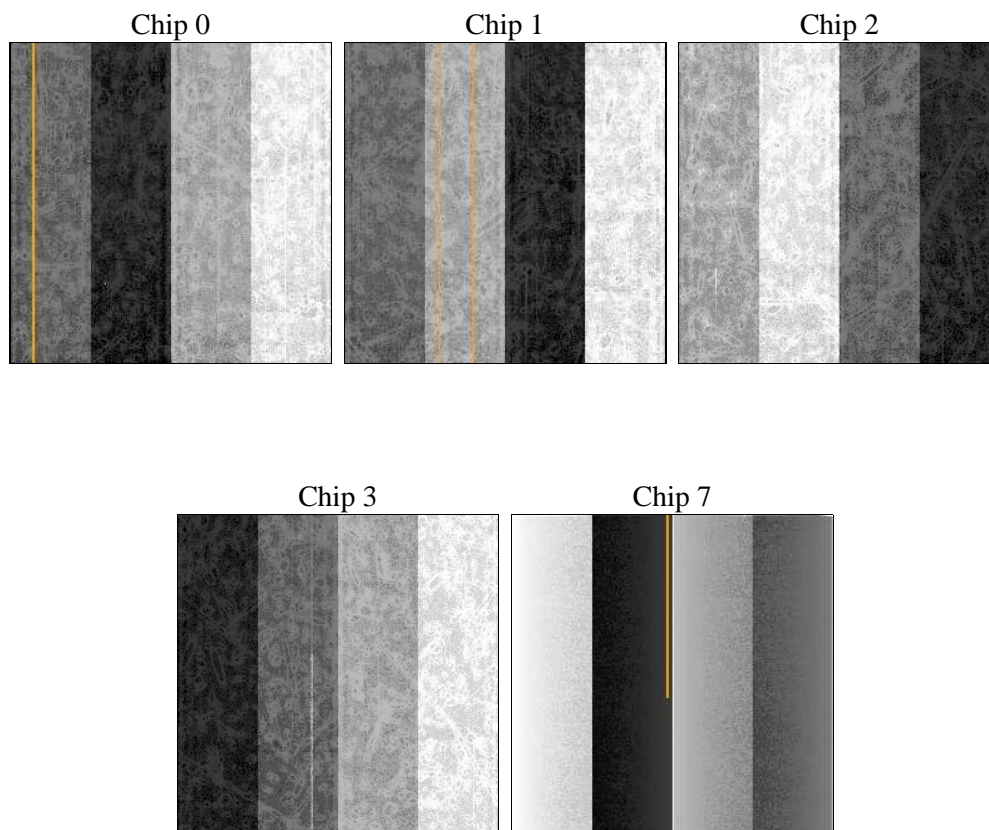
2 OBI

2.1 OBI

2.1.1 Images



2.1.2 Bias



2.1.3 Parameters

obi_num	0	Obi number	sched_exp_time	10000.000000	[s] Scheduled observation exposure time
ascdsver	8.4.3	Processing system revision	ontime	10047.100077271	Sum of GTIs [s]
caldsver	4.4.8	 	ontime0	10047.100077271	Sum of GTIs [s]
date	2012-02-26T03:50:20	Date and time of file creation	ontime1	10047.100077271	Sum of GTIs [s]
revision	2	Processing version of data	ontime2	10043.959087074	Sum of GTIs [s]
			ontime3	10047.100077271	Sum of GTIs [s]
			ontime7	10047.100077271	Sum of GTIs [s]
			l1events	313788	Number of level 1 events

2.1.4 Events

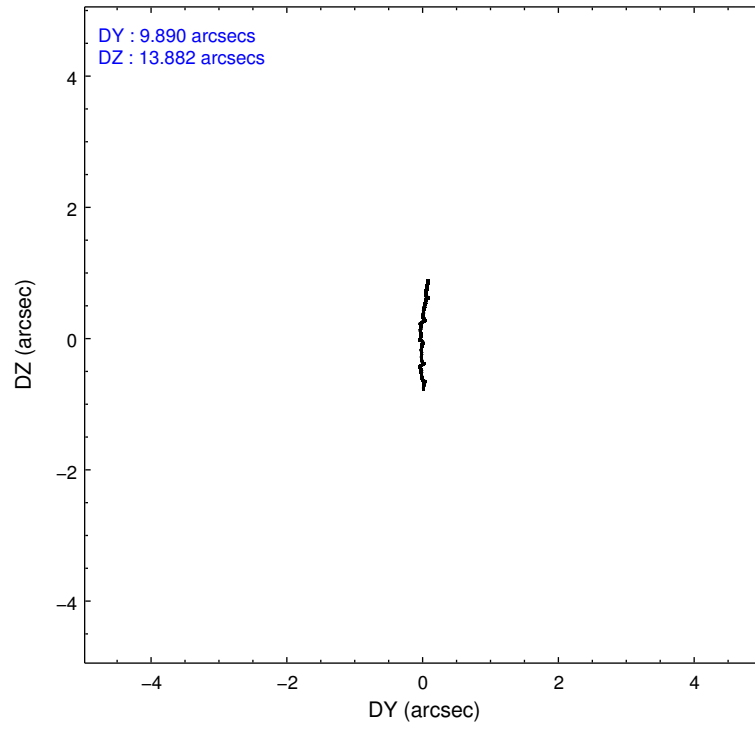
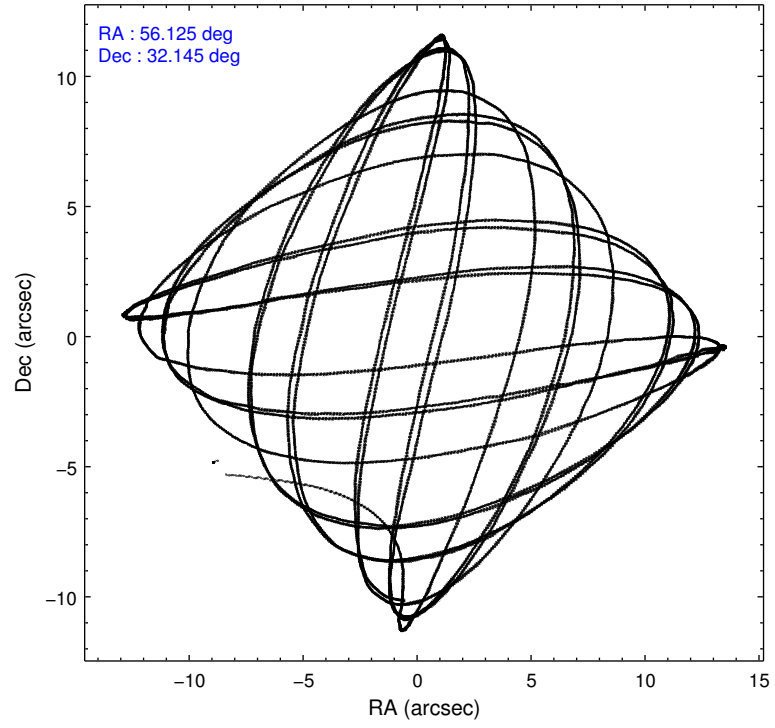
	ccd 0	ccd 1	ccd 2	ccd 3	ccd 7
level 1 events	55187	57436	60135	63927	77103
rejected events	47271	48100	52595	54133	42792
rejected %	85%	83%	87%	84%	55%

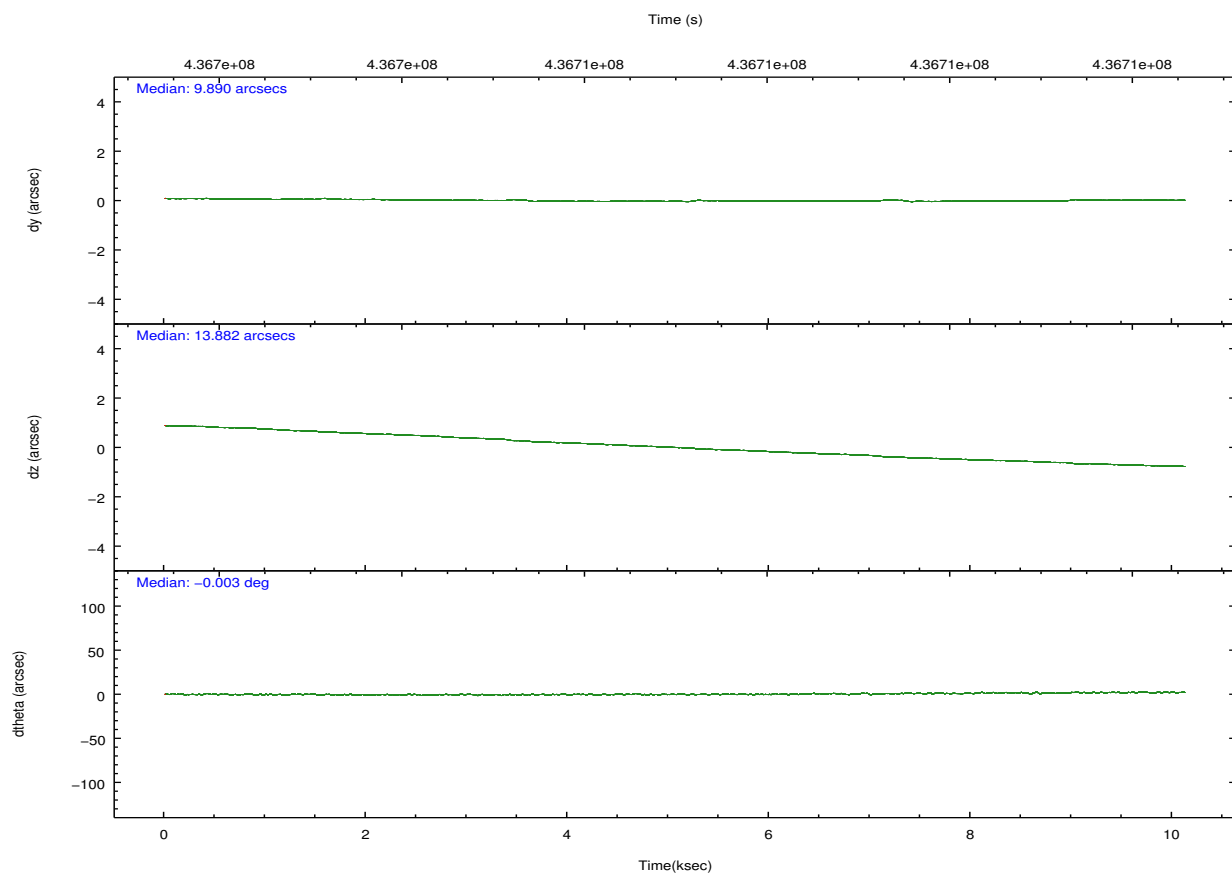
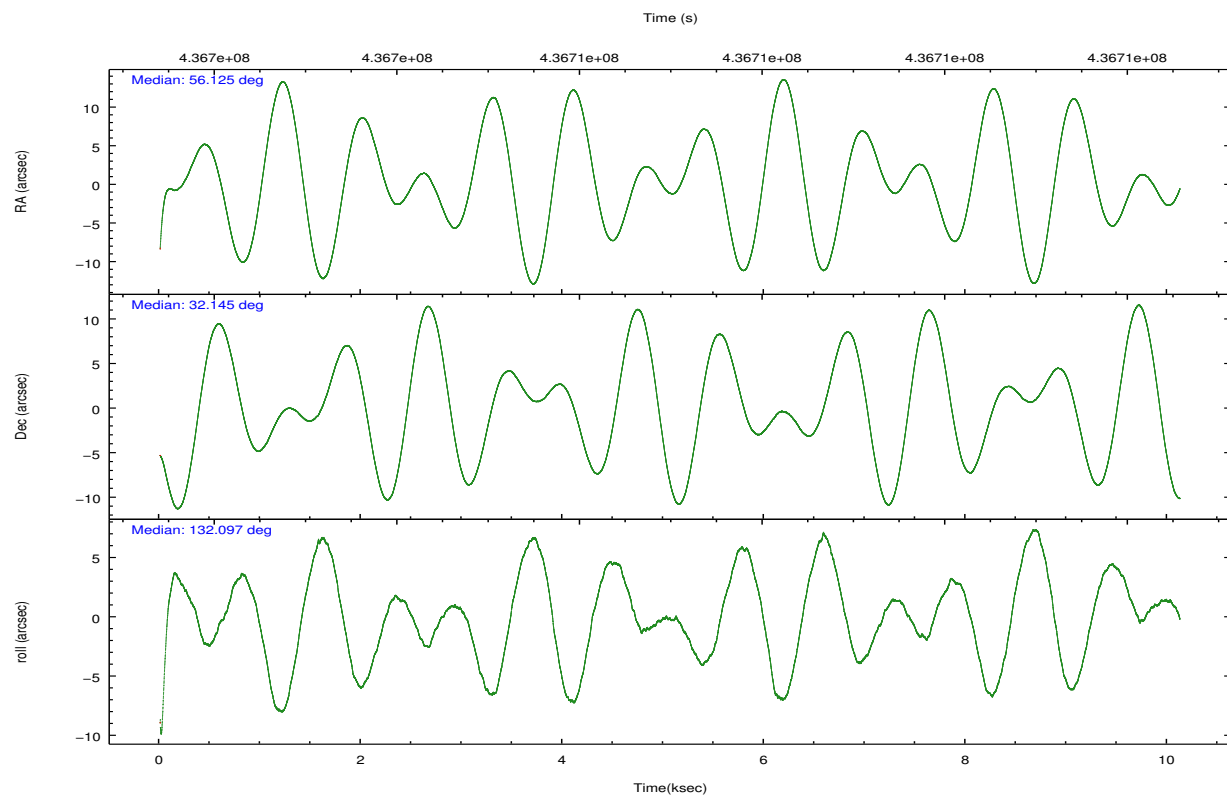
	ccd 0	ccd 1	ccd 2	ccd 3	ccd 7
grade 0 events	3317	3956	3025	4988	2988
	6%	6%	5%	7%	3%
grade 1 events	32	59	37	78	95
	0%	0%	0%	0%	0%
grade 2 events	1746	2022	1700	1744	6982
	3%	3%	2%	2%	9%
grade 3 events	755	837	670	818	3035
	1%	1%	1%	1%	3%
grade 4 events	681	846	775	816	2981
	1%	1%	1%	1%	3%
grade 5 events	2649	2755	2579	3021	8210
	4%	4%	4%	4%	10%
grade 6 events	1421	1679	1373	1430	18335
	2%	2%	2%	2%	23%
grade 7 events	44586	45282	49976	51032	34477
	80%	78%	83%	79%	44%

2.2 Compared Parameters

Parameter	Planned	Actual	Parameter	Planned	Actual
Instrument	ACIS	ACIS	Obspar format version number	7	7
Detector	ACIS-01237	ACIS-01237	Obspar file type	PREDICTED	ACTUAL
Grating	NONE	NONE	Obspar update status	NONE	UPDATED
Data mode	VFAINT	VFAINT	CCD I0 on	Y	Y
Observation mode	POINTING	POINTING	CCD I1 on	Y	Y
[deg] Pointing RA	56.155946	56.12496806761376	CCD I2 on	Y	Y
[deg] Pointing Dec	32.136605	32.14490117037703	CCD I3 on	Y	Y
[deg] Pointing Roll	131.880113	132.1052614158012	CCD S0 on	N	N
[mm] SIM focus pos	-0.782348	-0.7809083437167272	CCD S1 on	N	N
[mm] SIM defocus	0	0.001439871863259334	CCD S2 on	N	N
[mm] SIM translation stage pos	-233.592463	-233.5874344608287	CCD S3 on	O1	Y
[mm] SIM translation stage offset	0	-0.005018542100998502	CCD S4 on	N	N
[s] Observation start time (MET)	436702054.184000	436700775.25387	CCD S5 on	N	N
Observation start date	2011-11-03T10:06:28	2011-11-03T09:46:15	Number of optional ACIS chips dropped	0	0
[s] Observation end time (MET)	436712054.184000	436713549.82954	On-chip summing requested	N	N
Observation end date	2011-11-03T12:53:08	2011-11-03T13:19:09	Subarray requested	NONE	NONE
Read mode	TIMED	TIMED	Alternating exposures requested	N	N
			[s] Primary exposure time	0.000000	3.1

2.3 Aspect



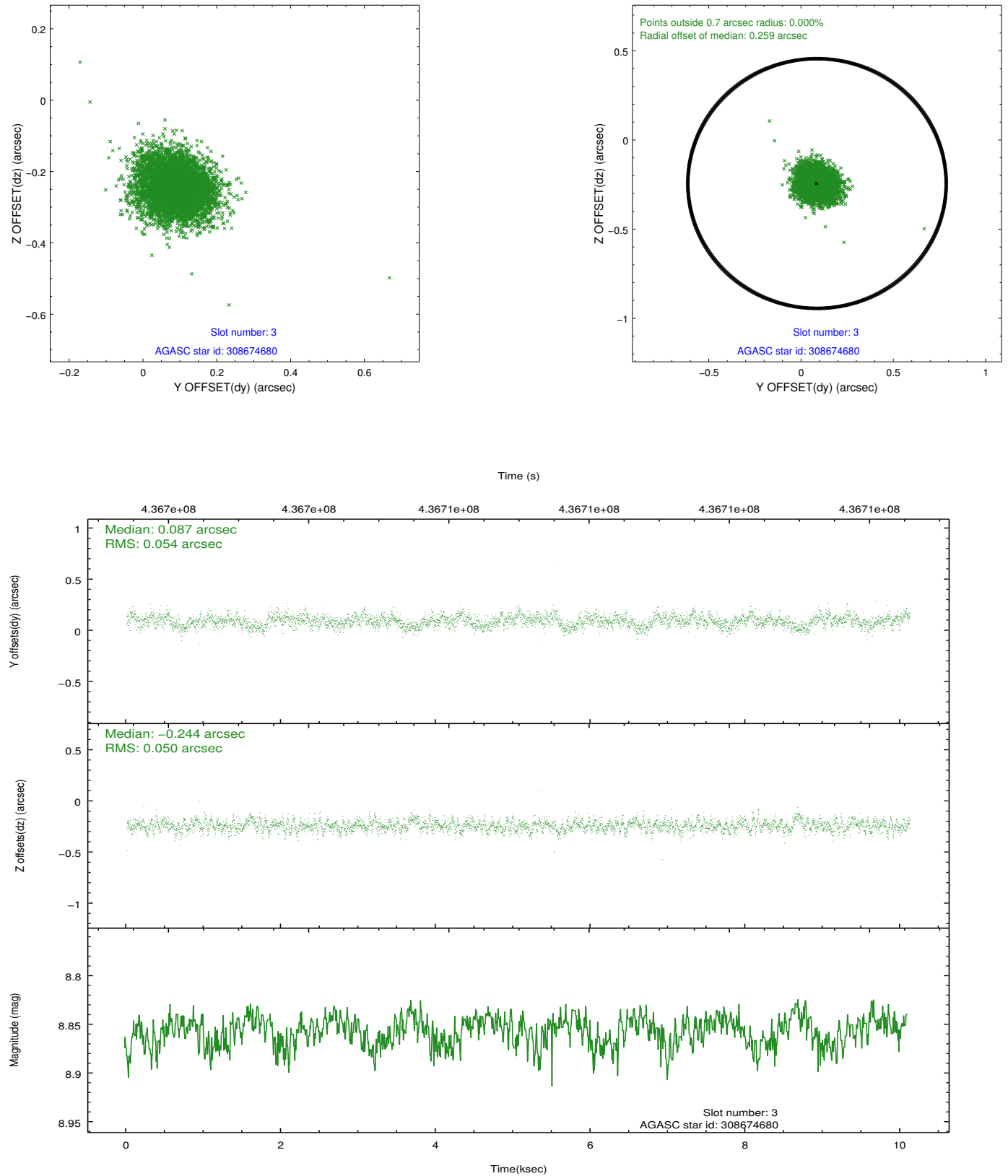


Slot Statistics

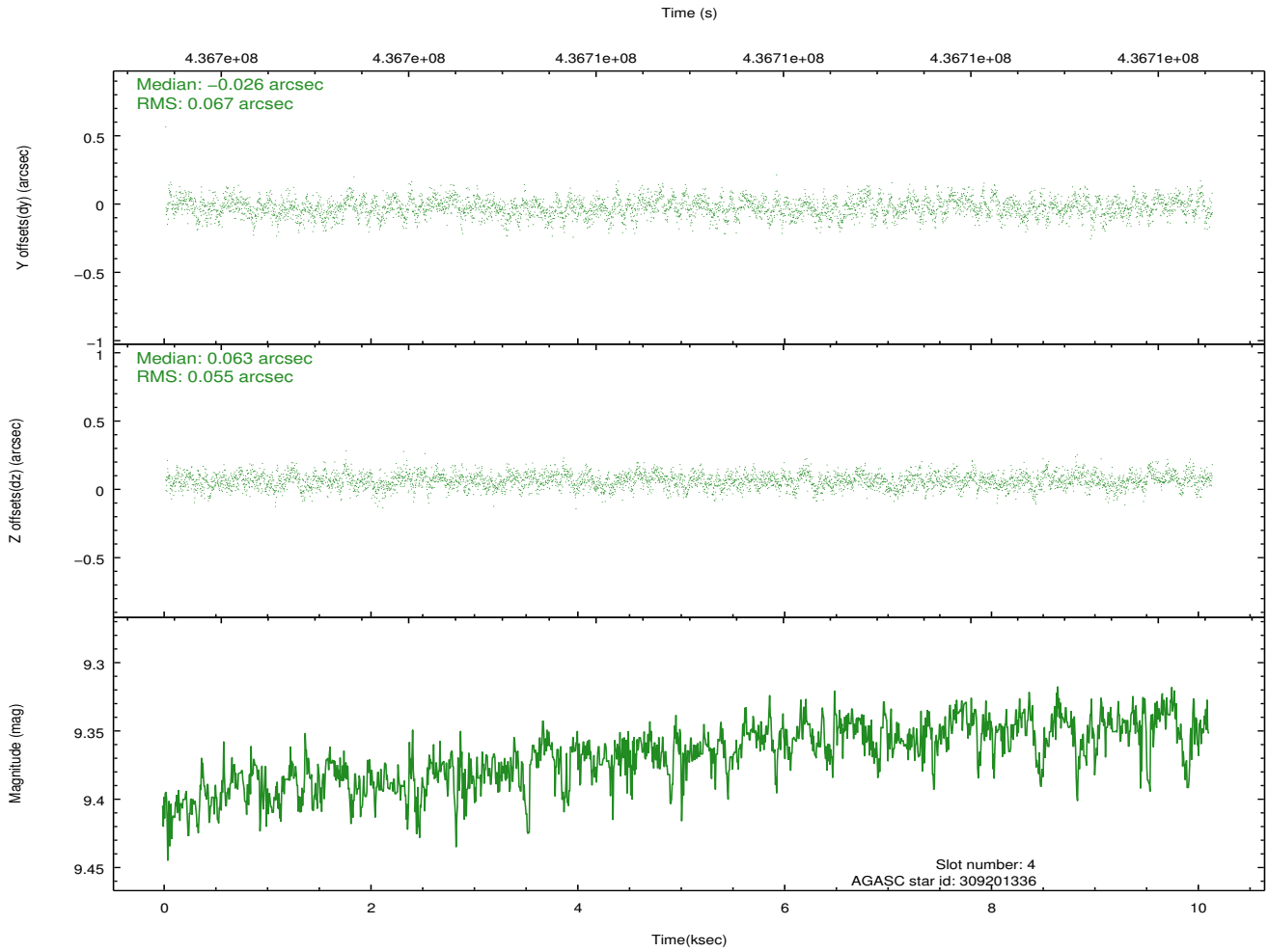
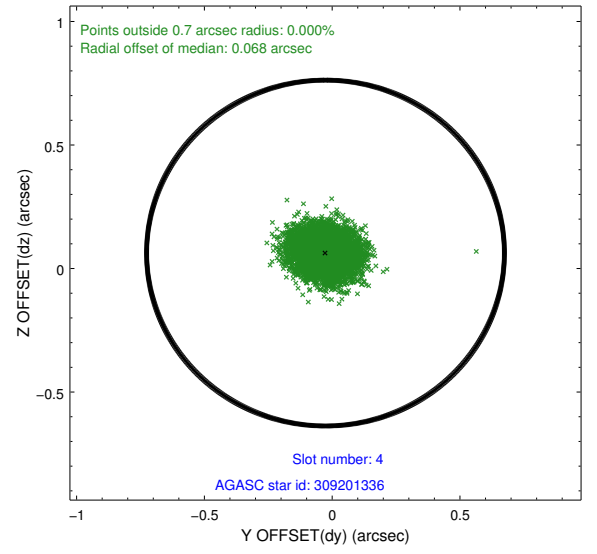
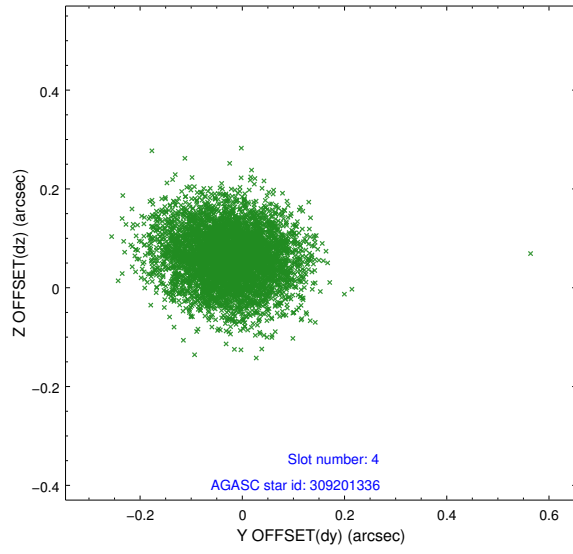
slot	status	id	mag	n_pts	med_dy	med_dz	dr1	dr2	ra	dec	mean_y	mean_z
0	FID	ACIS-I-1	7.02	2468	0.064	-0.012	0.012	0.019	0.000000	0.000000	929.78	-837.48
1	FID	ACIS-I-5	7.01	2469	-0.227	0.068	0.011	0.016	0.000000	0.000000	-1818.35	1059.80
2	FID	ACIS-I-6	7.01	2467	0.071	0.011	0.015	0.025	0.000000	0.000000	394.73	1704.87
3	GUIDE	308674680	8.86	4934	0.087	-0.244	0.076	0.125	55.747345	31.652644	-459.38	2092.54
4	GUIDE	309201336	9.37	4931	-0.026	0.063	0.093	0.151	55.980135	32.629910	1678.57	-788.34
5	GUIDE	309205288	9.20	4935	0.009	0.069	0.090	0.146	55.920876	32.625581	1787.51	-644.67
6	GUIDE	309332904	7.56	4937	0.004	0.063	0.070	0.113	56.362777	32.287653	-13.75	-832.32
7	GUIDE	309336160	7.09	4936	-0.078	0.046	0.086	0.138	56.670296	32.290187	-630.11	-1537.31

2.4 Star Slots

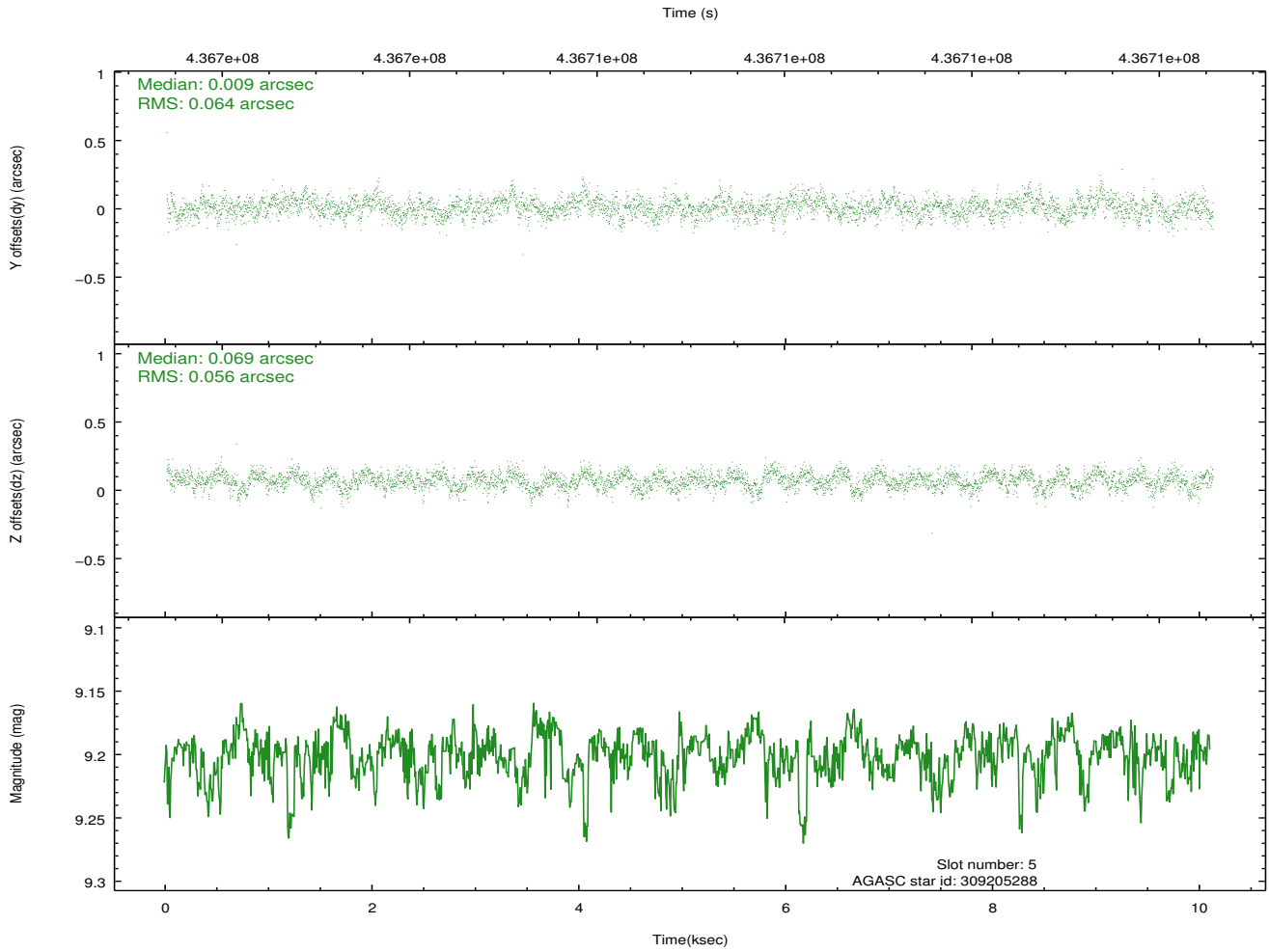
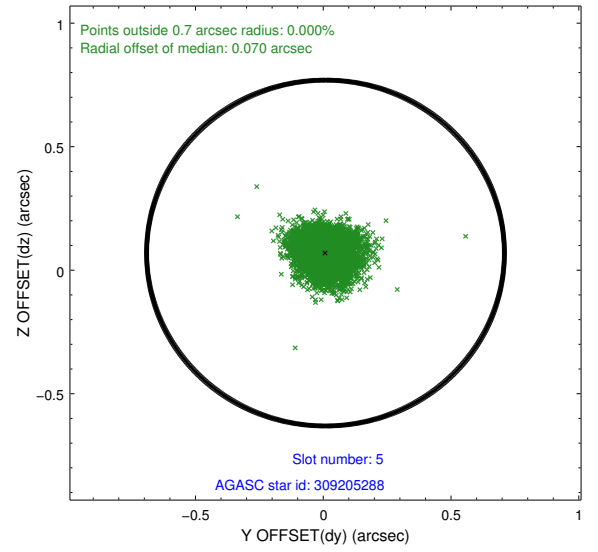
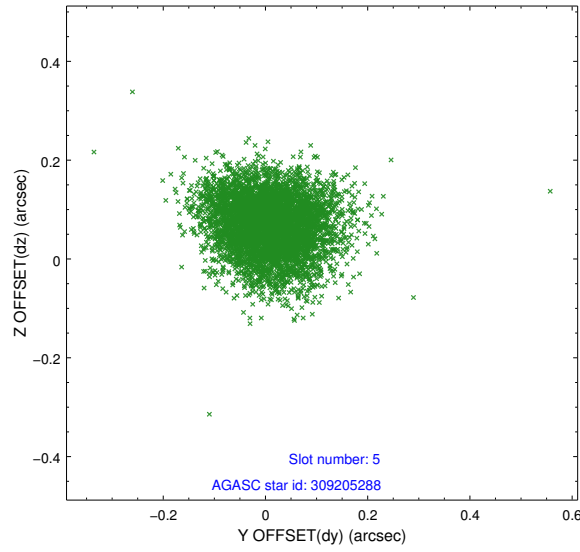
2.4.1 Slot 3



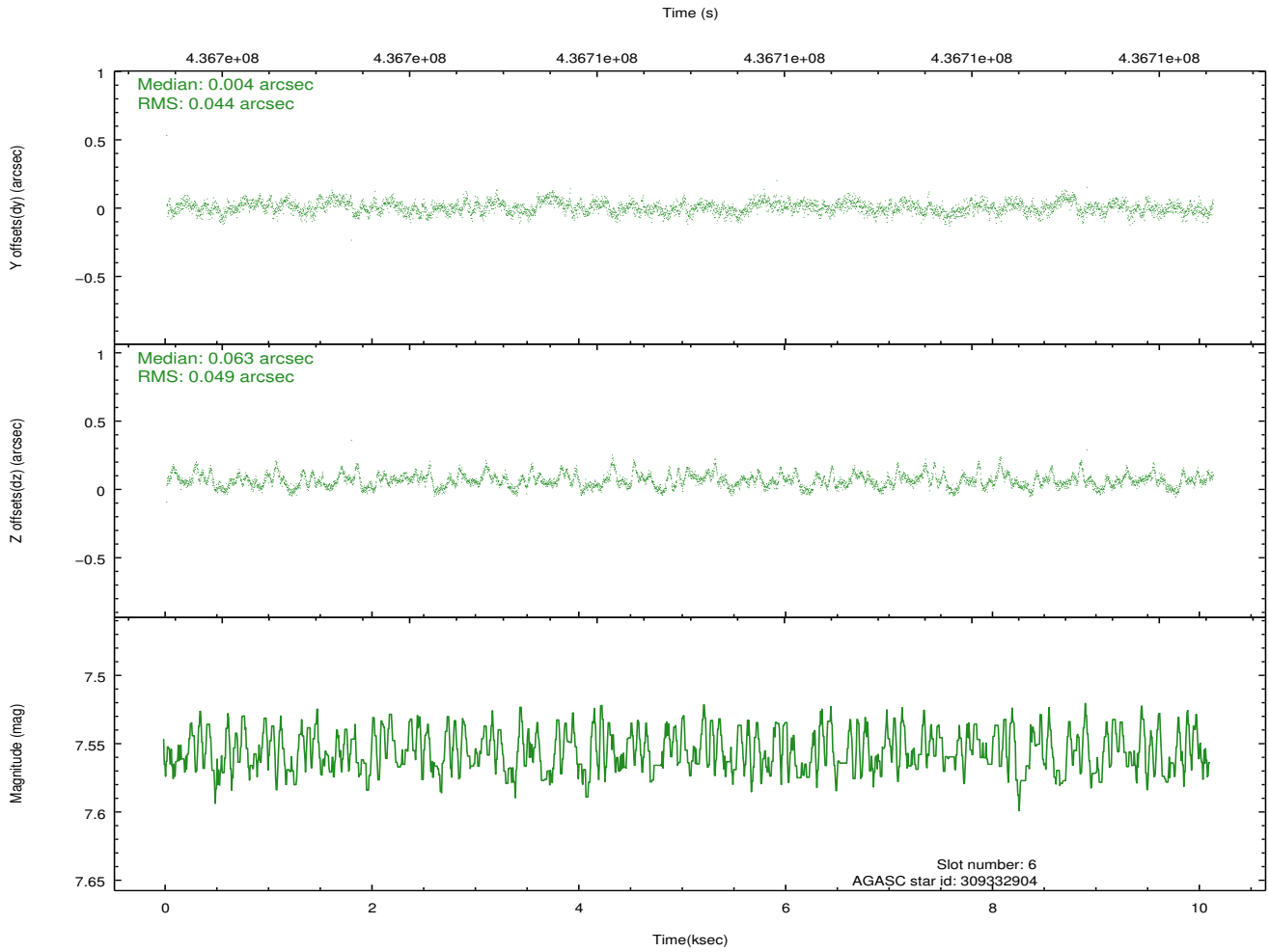
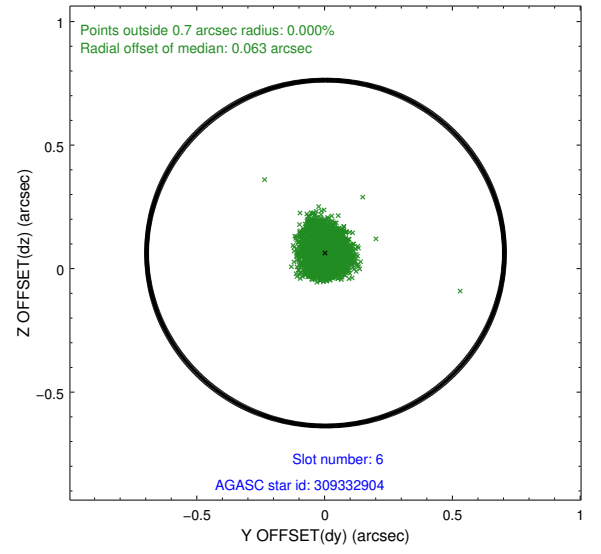
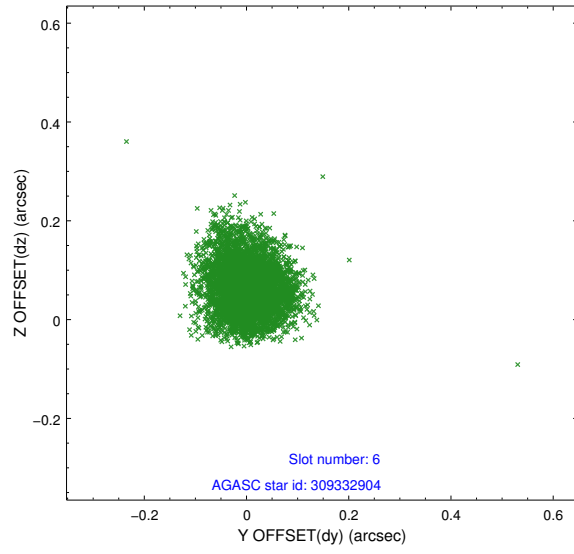
2.4.2 Slot 4



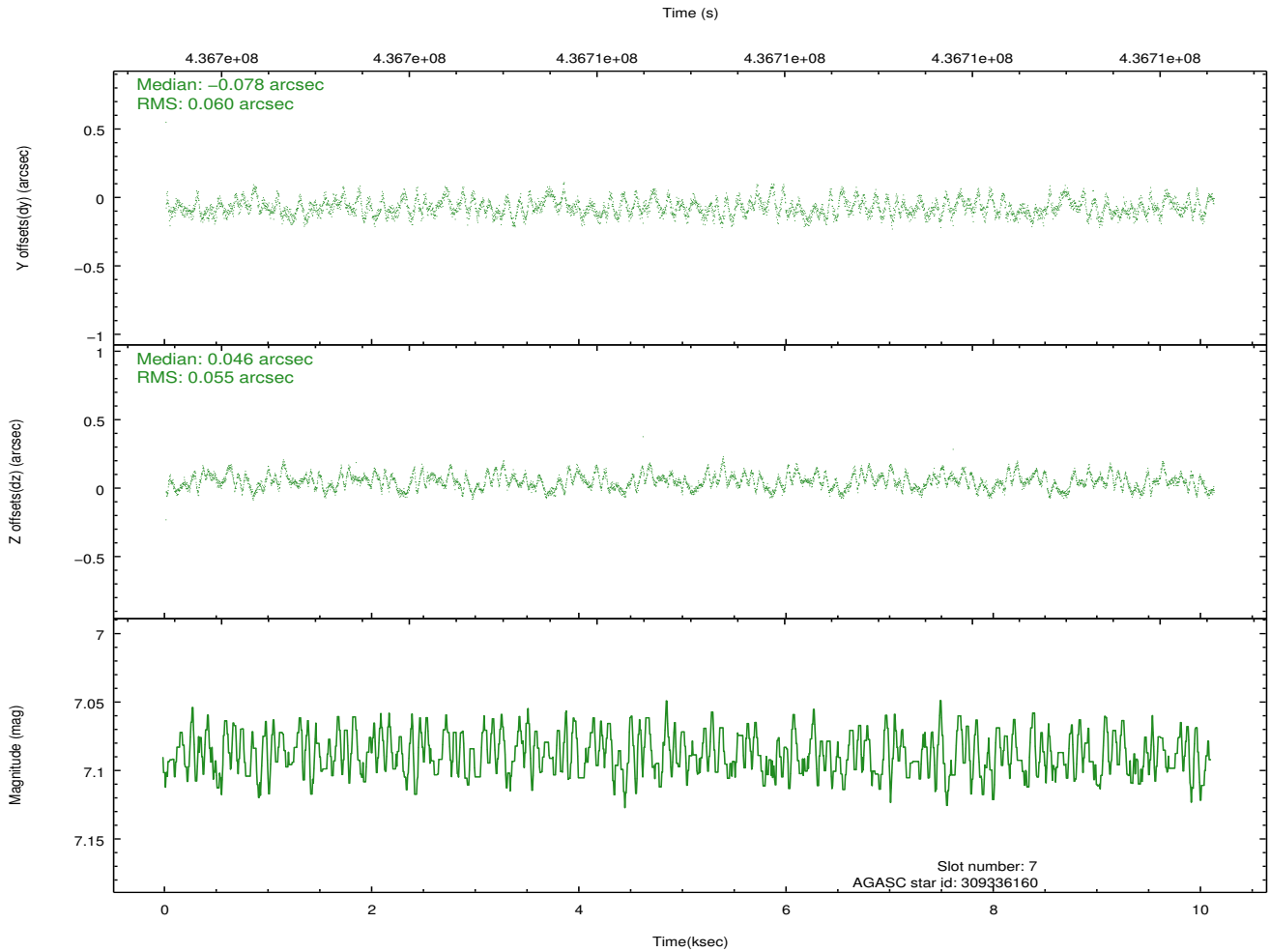
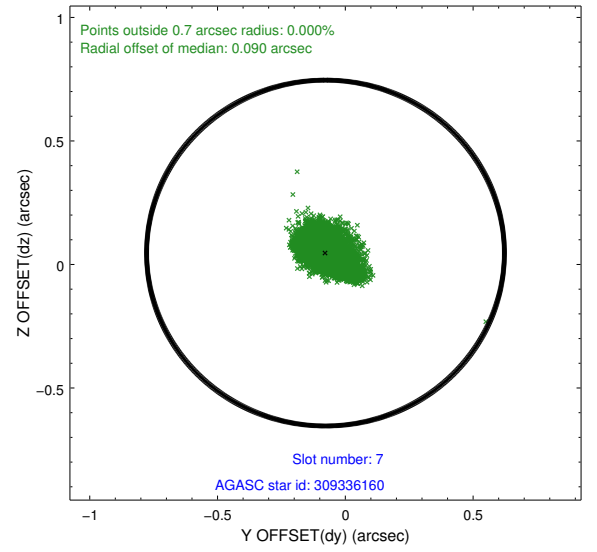
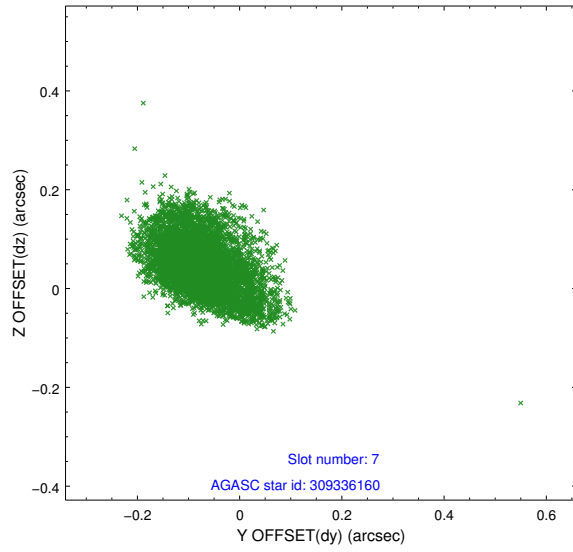
2.4.3 Slot 5



2.4.4 Slot 6

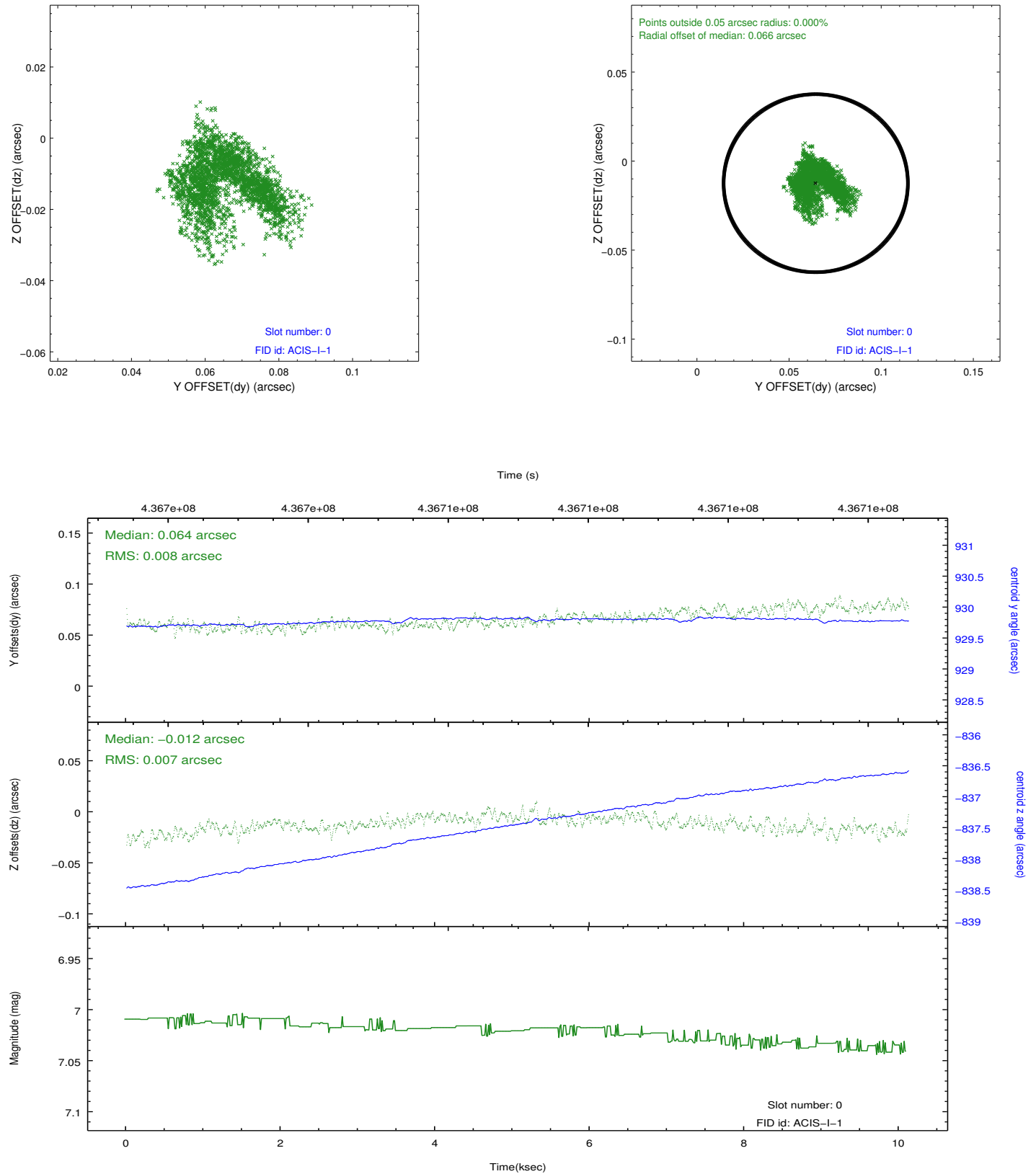


2.4.5 Slot 7

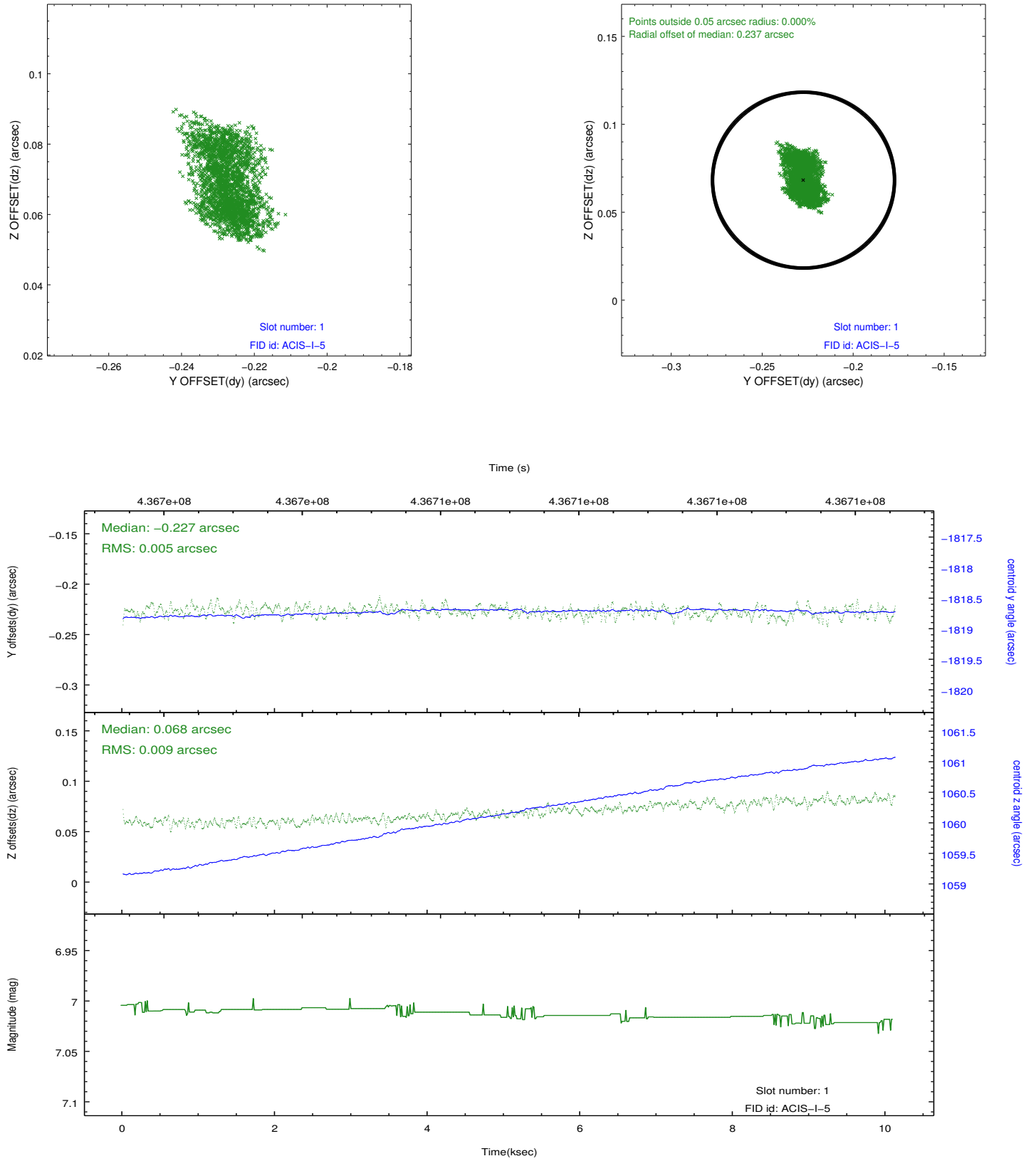


2.5 FID Slots

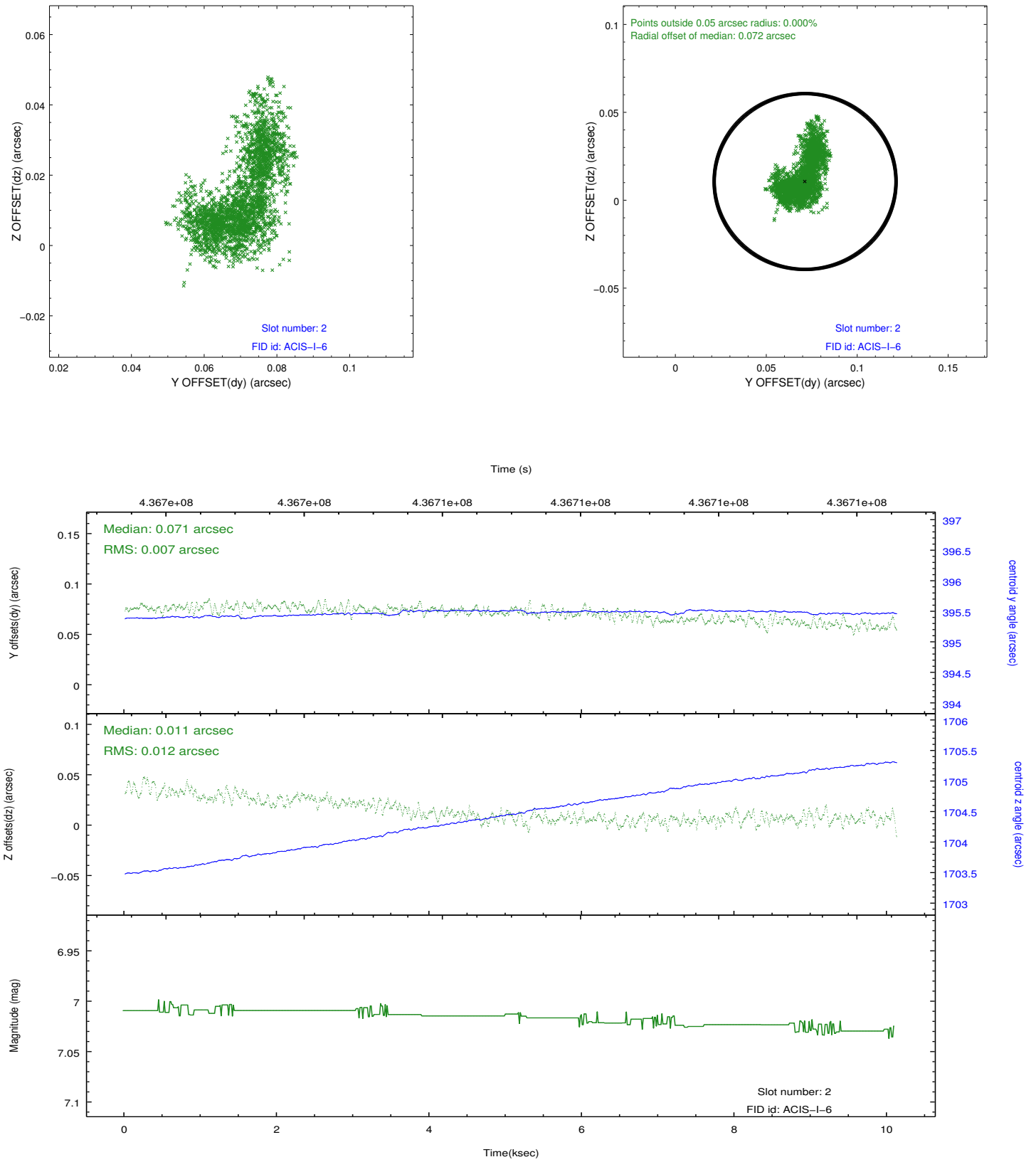
2.5.1 Slot 0



2.5.2 Slot 1



2.5.3 Slot 2



A Summary

A.1 Status

V&V Scientist	Jen Lauer
V&V Date (YYYY-MM-DD)	2012.02.28
V&V Edition	1
V&V Disposition and Status	OK
V&V Charge Time	10.047100077271

A.2 Comments

Joint Proposal: CX0-Spitzer