

V&V Reference Report

L2 ASCDS Version : 8.4.3

Observation 13425 - L2 Version 2
Chandra X-Ray Center

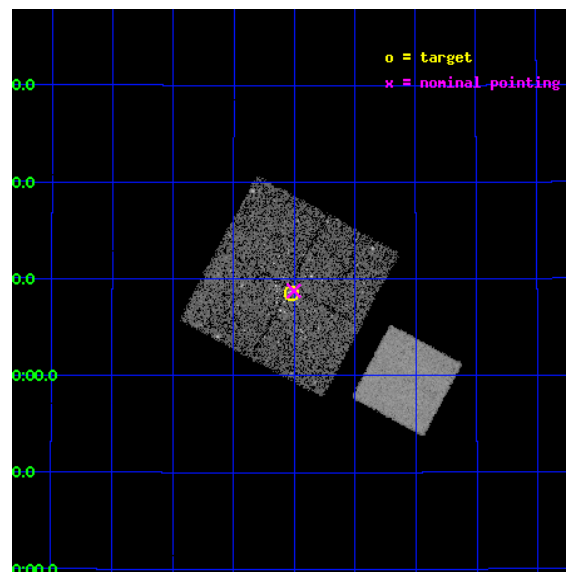
L2 Processing Date : Feb 25 2012

Contents

| | | |
|----------|-------------------------------|-----------|
| 1 | Front | 2 |
| 2 | OBI | 3 |
| 2.1 | OBI | 3 |
| 2.1.1 | Images | 3 |
| 2.1.2 | Bias | 3 |
| 2.1.3 | Parameters | 4 |
| 2.1.4 | Events | 4 |
| 2.2 | Compared Parameters | 5 |
| 2.3 | Aspect | 6 |
| 2.4 | Star Slots | 9 |
| 2.4.1 | Slot 3 | 9 |
| 2.4.2 | Slot 4 | 10 |
| 2.4.3 | Slot 5 | 11 |
| 2.4.4 | Slot 6 | 12 |
| 2.4.5 | Slot 7 | 13 |
| 2.5 | FID Slots | 14 |
| 2.5.1 | Slot 0 | 14 |
| 2.5.2 | Slot 1 | 15 |
| 2.5.3 | Slot 2 | 16 |
| A | Summary | 17 |
| A.1 | Status | 17 |
| A.2 | Comments | 17 |

1 Front

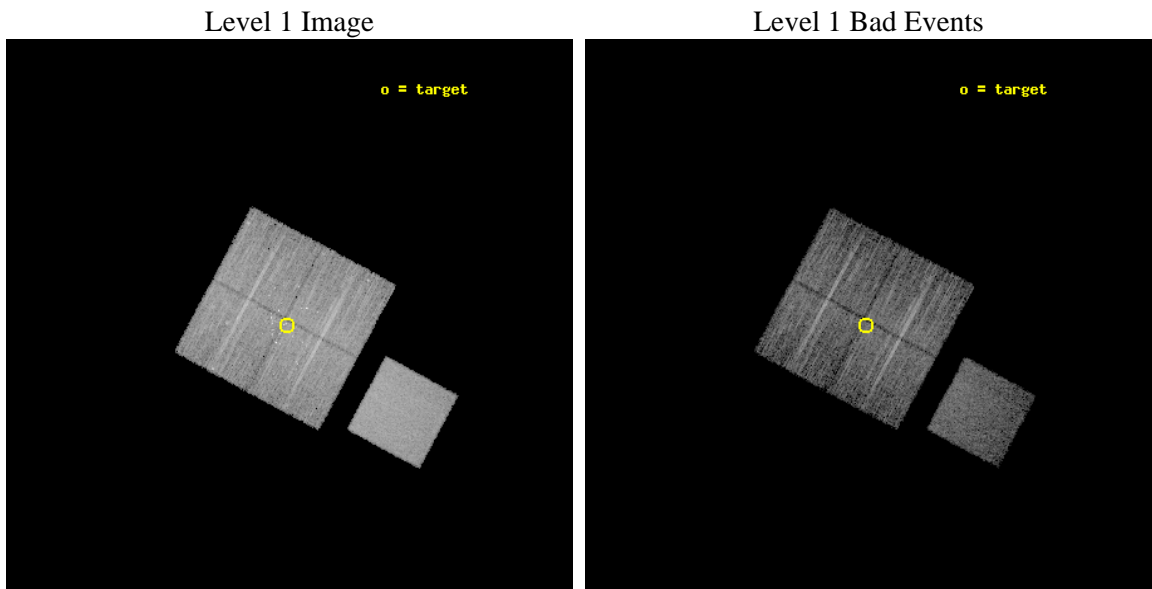
| | | |
|----------|--|---|
| seq_num | 200747 | Sequence number |
| obs_id | 13425 | Observation id |
| title | Connecting Young Stellar Object Variability Across the Great Observatories: A Combined Spitzer and Chandra Study | Proposal title |
| observer | Dr. Kevin Flaherty | Principal investigator |
| object | IC 348 | Source name |
| dtcycle | 0 | |
| cycle | P | events from which exps? Prim/Second/Both |
| ra_targ | 56.13125 | Observer's specified target RA [deg] |
| dec_targ | 32.142694 | Observer's specified target Dec [deg] |
| ra_nom | 56.125821896538 | Nominal RA [deg] |
| dec_nom | 32.146132383281 | Nominal Dec [deg] |
| roll_nom | 118.3036223032 | Nominal Roll [deg] |
| revision | 2 | Processing version of data |
| ontime | 10040.859026849 | Sum of GTIs [s] |
| livetime | 9909.6678116906 | Livetime [s] |
| ontime0 | 10044.000077248 | Sum of GTIs [s] |
| ontime1 | 10040.859036982 | Sum of GTIs [s] |
| ontime2 | 10044.000077248 | Sum of GTIs [s] |
| ontime3 | 10040.859026849 | Sum of GTIs [s] |
| ontime7 | 10044.000077248 | Sum of GTIs [s] |
| l2events | 63359 | Number of level 2 events |



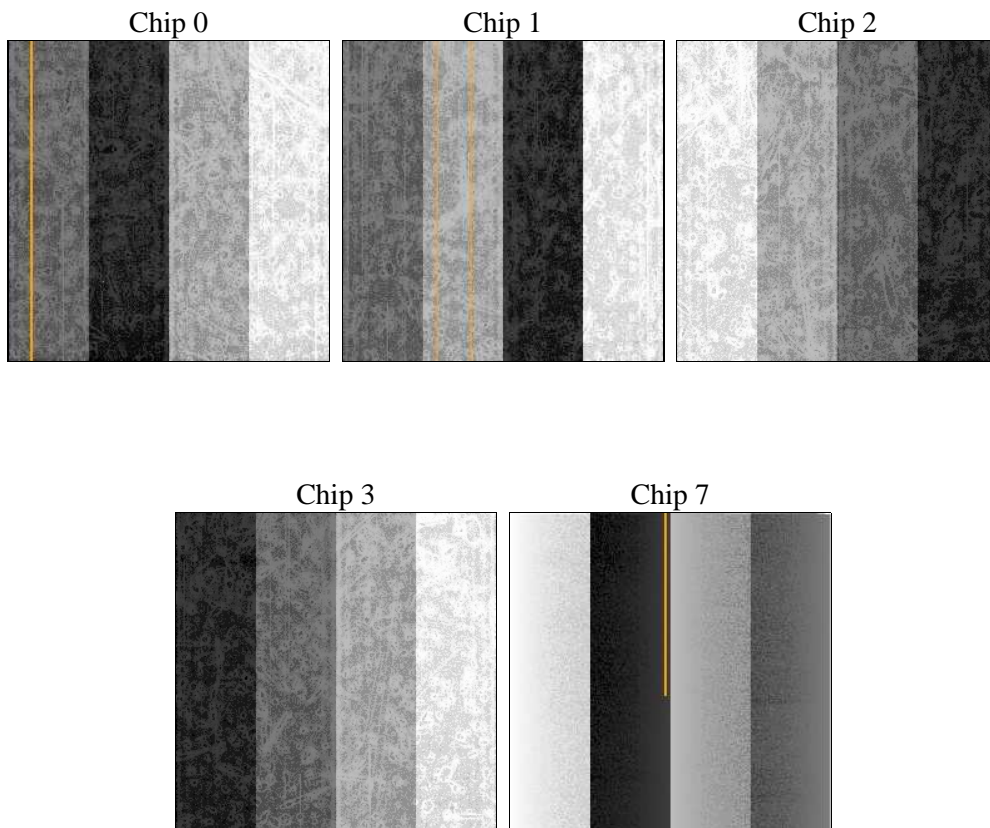
2 OBI

2.1 OBI

2.1.1 Images



2.1.2 Bias



2.1.3 Parameters

| | | | | | |
|----------|---------------------|--------------------------------|----------------|-----------------|---|
| obi_num | 0 | Obi number | sched_exp_time | 9999.817000 | [s] Scheduled observation exposure time |
| ascdsver | 8.4.3 | Processing system revision | ontime | 10040.859026849 | Sum of GTIs [s] |
| caldsver | 4.4.8 | | ontime0 | 10044.000077248 | Sum of GTIs [s] |
| date | 2012-02-25T03:21:21 | Date and time of file creation | ontime1 | 10040.859036982 | Sum of GTIs [s] |
| revision | 2 | Processing version of data | ontime2 | 10044.000077248 | Sum of GTIs [s] |
| | | | ontime3 | 10040.859026849 | Sum of GTIs [s] |
| | | | ontime7 | 10044.000077248 | Sum of GTIs [s] |
| | | | l1events | 320722 | Number of level 1 events |

2.1.4 Events

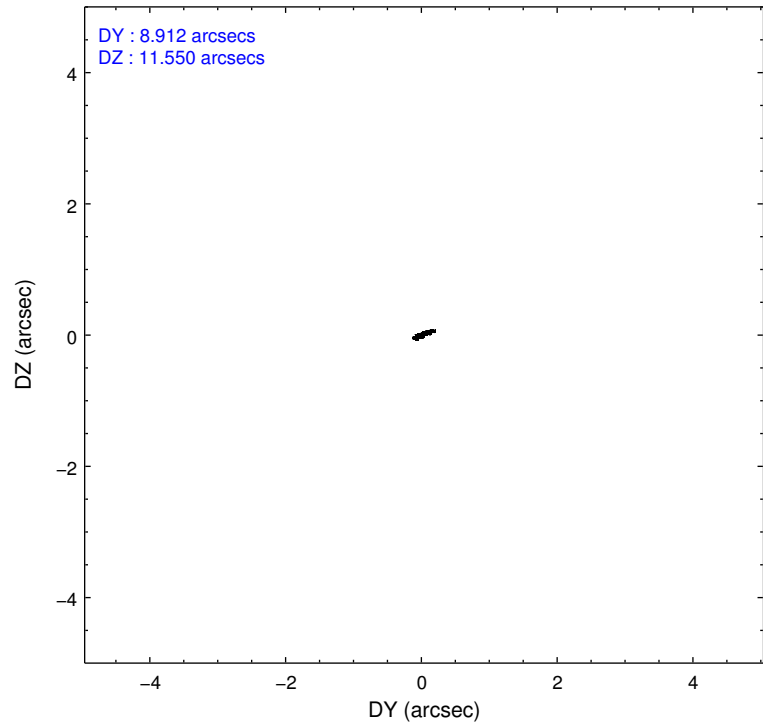
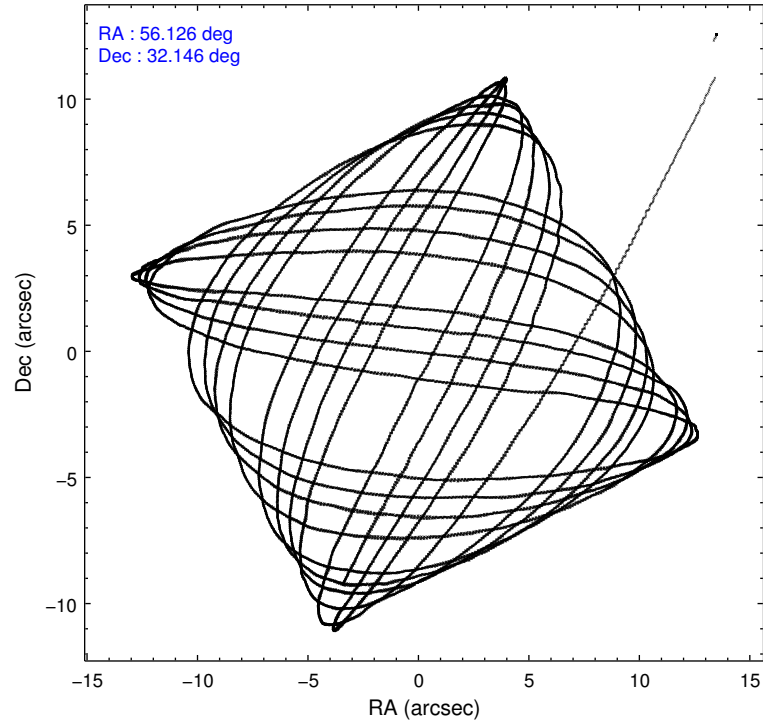
| | ccd 0 | ccd 1 | ccd 2 | ccd 3 | ccd 7 |
|-----------------|-------|-------|-------|-------|-------|
| level 1 events | 58145 | 60137 | 64284 | 60757 | 77399 |
| rejected events | 49413 | 50559 | 55944 | 51855 | 43591 |
| rejected % | 84% | 84% | 87% | 85% | 56% |

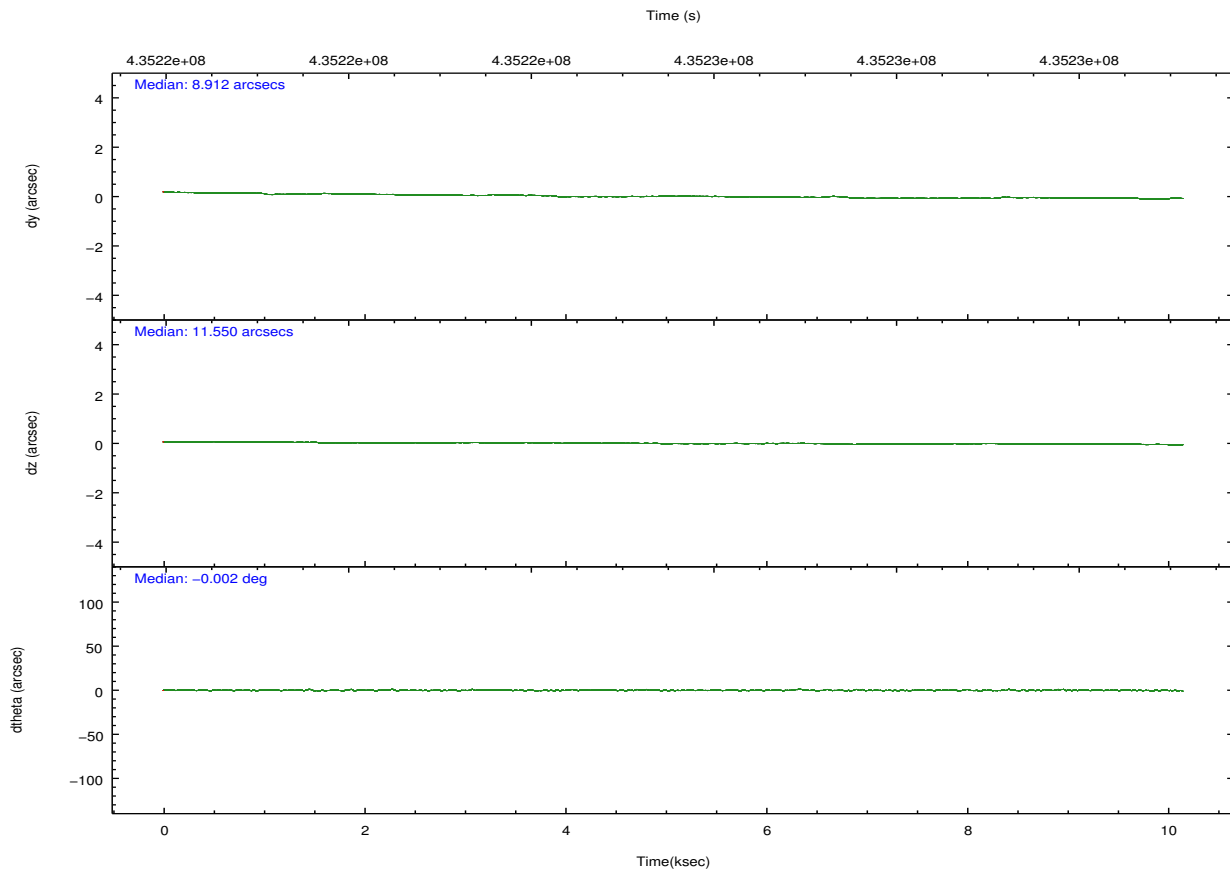
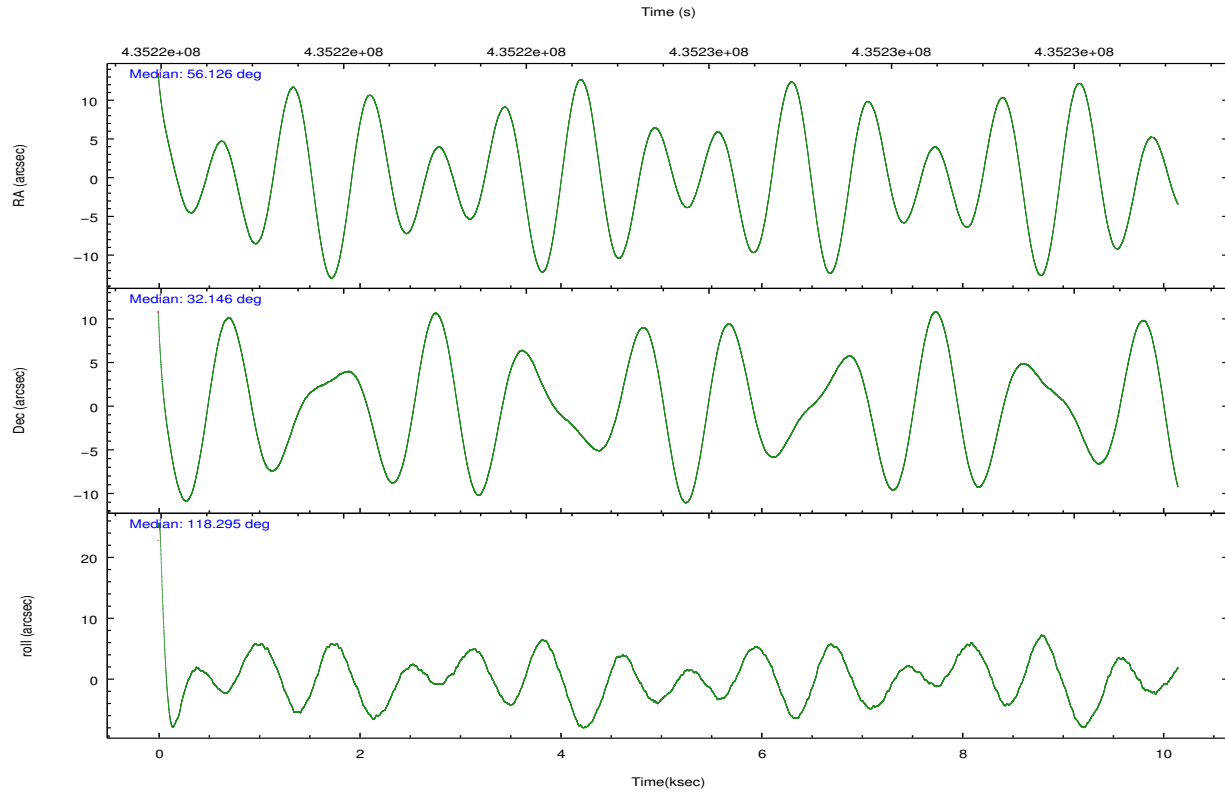
| | ccd 0 | ccd 1 | ccd 2 | ccd 3 | ccd 7 |
|----------------|-------|-------|-------|-------|-------|
| grade 0 events | 3784 | 4288 | 3756 | 4243 | 2750 |
| | 6% | 7% | 5% | 6% | 3% |
| grade 1 events | 47 | 53 | 34 | 61 | 96 |
| | 0% | 0% | 0% | 0% | 0% |
| grade 2 events | 1852 | 1999 | 1716 | 1604 | 6677 |
| | 3% | 3% | 2% | 2% | 8% |
| grade 3 events | 829 | 791 | 737 | 807 | 2779 |
| | 1% | 1% | 1% | 1% | 3% |
| grade 4 events | 789 | 777 | 773 | 807 | 2821 |
| | 1% | 1% | 1% | 1% | 3% |
| grade 5 events | 2647 | 2849 | 2437 | 2950 | 7744 |
| | 4% | 4% | 3% | 4% | 10% |
| grade 6 events | 1481 | 1726 | 1360 | 1442 | 18791 |
| | 2% | 2% | 2% | 2% | 24% |
| grade 7 events | 46716 | 47654 | 53471 | 48843 | 35741 |
| | 80% | 79% | 83% | 80% | 46% |

2.2 Compared Parameters

| Parameter | Planned | Actual | Parameter | Planned | Actual |
|-----------------------------------|---------------------|-----------------------|---------------------------------------|-----------|---------|
| Instrument | ACIS | ACIS | Obspar format version number | 7 | 7 |
| Detector | ACIS-01237 | ACIS-01237 | Obspar file type | PREDICTED | ACTUAL |
| Grating | NONE | NONE | Obspar update status | NONE | UPDATED |
| Data mode | VFAINT | VFAINT | CCD I0 on | Y | Y |
| Observation mode | POINTING | POINTING | CCD I1 on | Y | Y |
| [deg] Pointing RA | 56.153521 | 56.12582189653752 | CCD I2 on | Y | Y |
| [deg] Pointing Dec | 32.131780 | 32.14613238328108 | CCD I3 on | Y | Y |
| [deg] Pointing Roll | 118.080150 | 118.3036223031958 | CCD S0 on | N | N |
| [mm] SIM focus pos | -0.782348 | -0.7809083437167272 | CCD S1 on | N | N |
| [mm] SIM defocus | 0 | 0.001439871863259334 | CCD S2 on | N | N |
| [mm] SIM translation stage pos | -233.592463 | -233.5874344608287 | CCD S3 on | O1 | Y |
| [mm] SIM translation stage offset | 0 | -0.005018542100998502 | CCD S4 on | N | N |
| [s] Observation start time (MET) | 435220623.184000 | 435219133.27621 | CCD S5 on | N | N |
| Observation start date | 2011-10-17T06:35:57 | 2011-10-17T06:12:13 | Number of optional ACIS chips dropped | 0 | 0 |
| [s] Observation end time (MET) | 435230623.184000 | 435230859.78932 | On-chip summing requested | N | N |
| Observation end date | 2011-10-17T09:22:37 | 2011-10-17T09:27:39 | Subarray requested | NONE | NONE |
| Read mode | TIMED | TIMED | Alternating exposures requested | N | N |
| | | | [s] Primary exposure time | 0.000000 | 3.1 |

2.3 Aspect



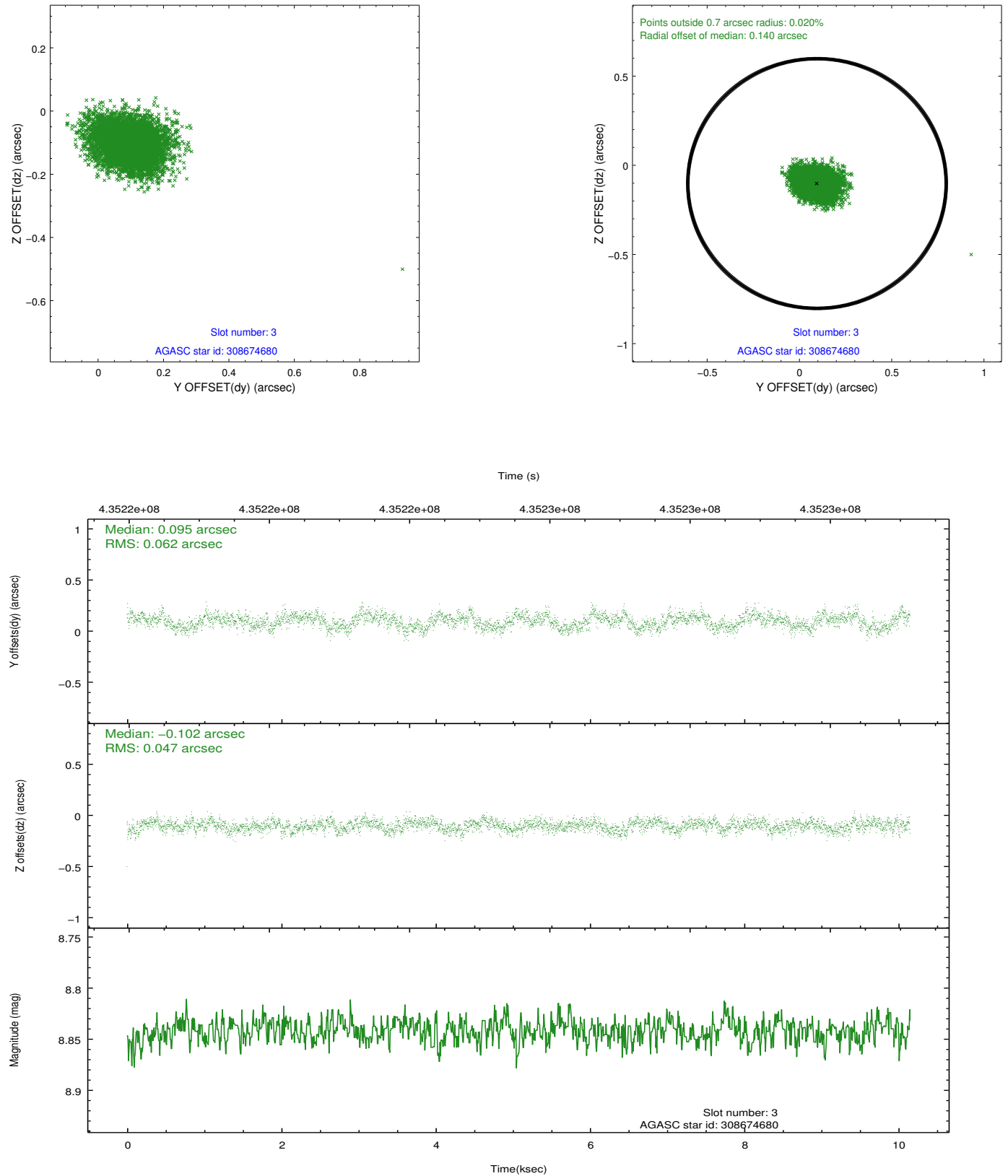


Slot Statistics

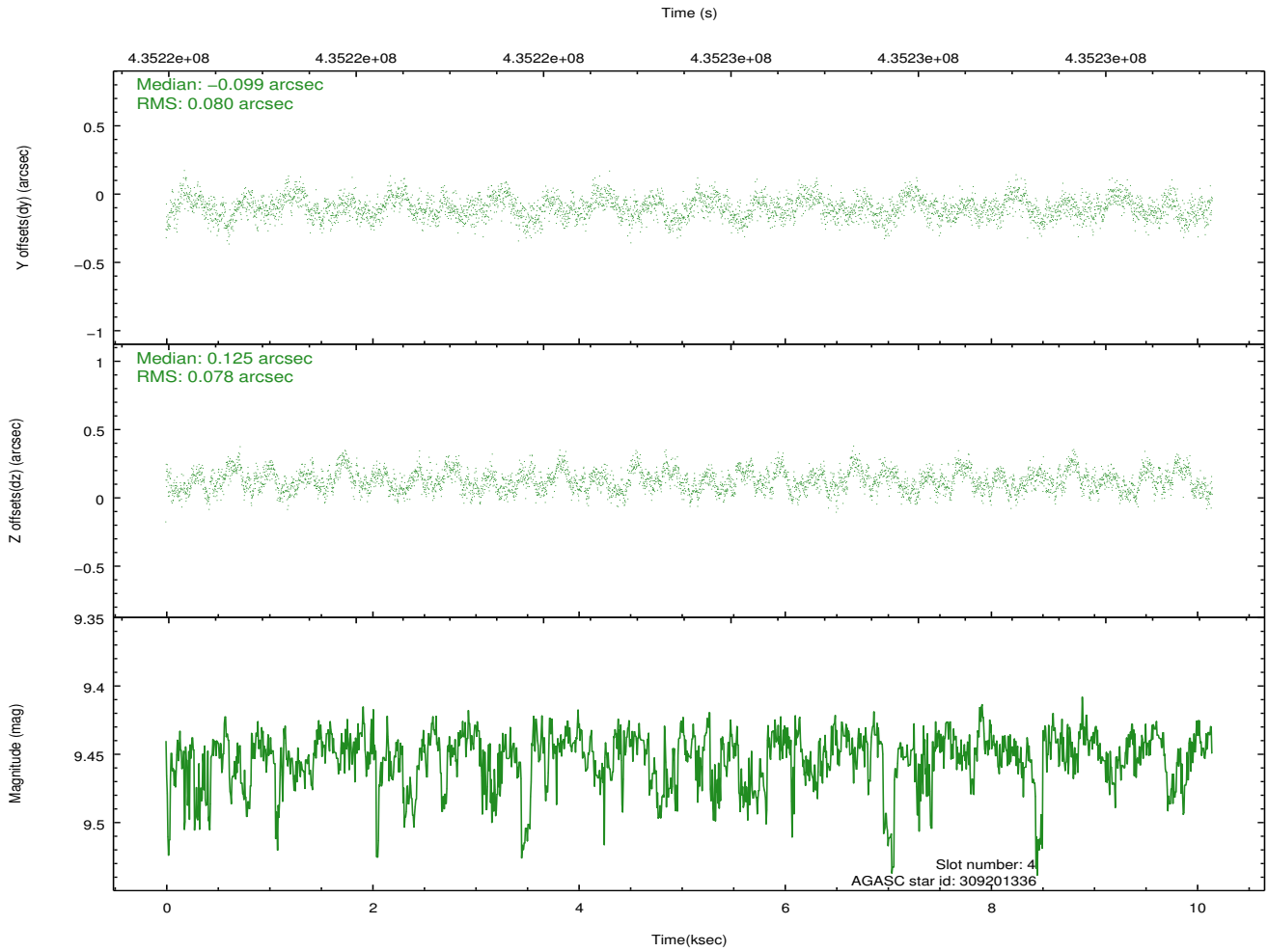
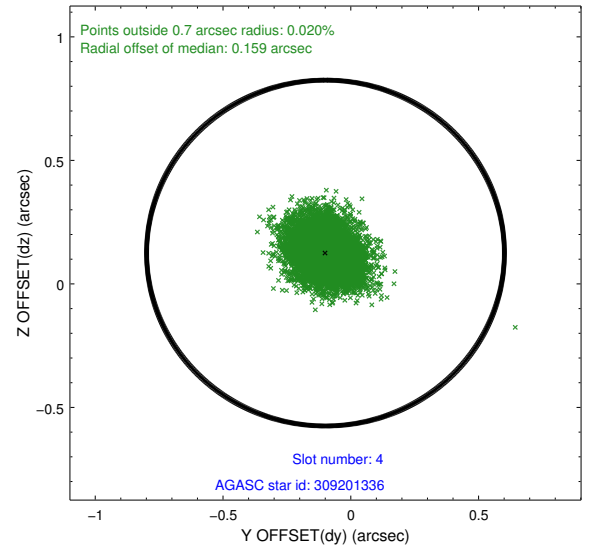
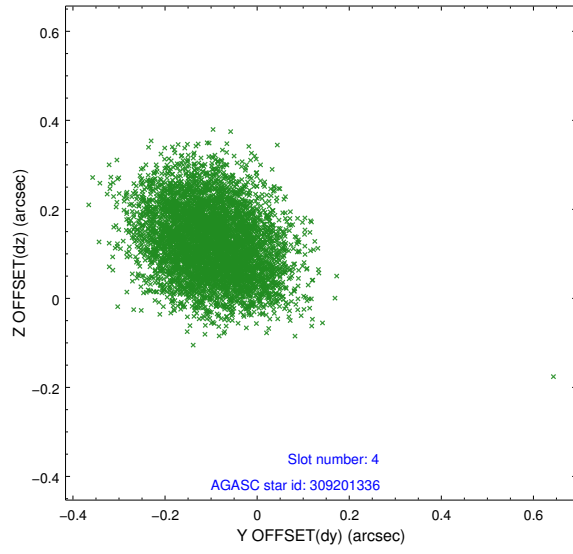
| slot | status | id | mag | n_pts | med_dy | med_dz | dr1 | dr2 | ra | dec | mean_y | mean_z |
|------|--------|-----------|------|-------|--------|--------|-------|-------|-----------|-----------|----------|----------|
| 0 | FID | ACIS-I-1 | 7.15 | 2476 | 0.107 | -0.089 | 0.006 | 0.010 | 0.000000 | 0.000000 | 930.80 | -835.16 |
| 1 | FID | ACIS-I-5 | 7.14 | 2477 | -0.249 | 0.092 | 0.006 | 0.010 | 0.000000 | 0.000000 | -1817.36 | 1062.26 |
| 2 | FID | ACIS-I-6 | 7.14 | 2476 | 0.051 | 0.068 | 0.006 | 0.010 | 0.000000 | 0.000000 | 395.74 | 1707.32 |
| 3 | GUIDE | 308674680 | 8.84 | 4948 | 0.095 | -0.102 | 0.082 | 0.133 | 55.747345 | 31.652644 | -933.63 | 1908.01 |
| 4 | GUIDE | 309201336 | 9.45 | 4942 | -0.099 | 0.125 | 0.121 | 0.188 | 55.980135 | 32.629910 | 1829.83 | -379.75 |
| 5 | GUIDE | 309205288 | 9.20 | 4948 | -0.096 | 0.139 | 0.096 | 0.158 | 55.920876 | 32.625581 | 1901.32 | -214.23 |
| 6 | GUIDE | 309336160 | 7.08 | 4952 | -0.061 | 0.088 | 0.076 | 0.119 | 56.670296 | 32.290187 | -233.09 | -1657.72 |
| 7 | GUIDE | 308676888 | 9.13 | 4949 | 0.160 | -0.257 | 0.105 | 0.168 | 55.566279 | 31.676245 | -596.17 | 2356.33 |

2.4 Star Slots

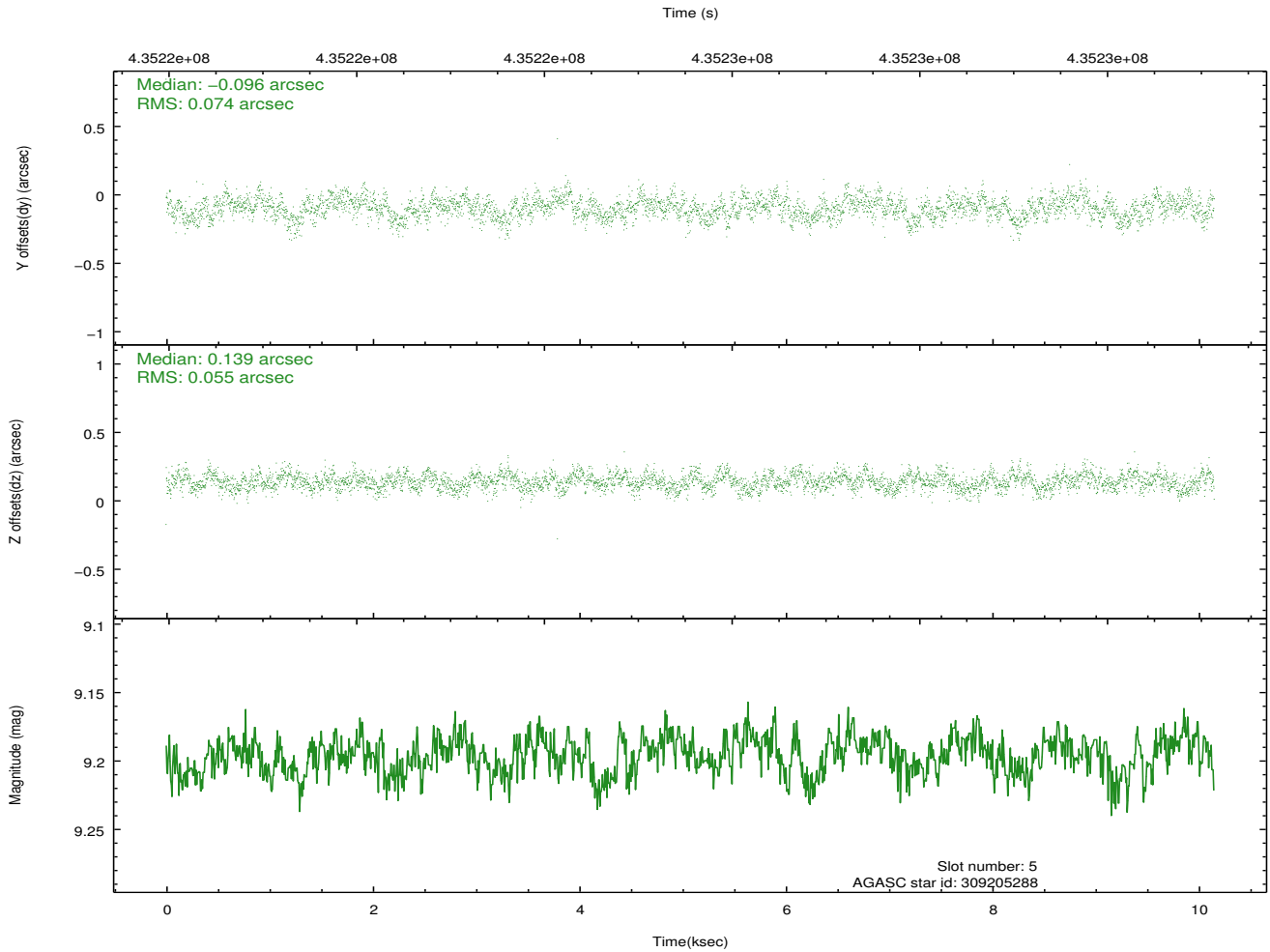
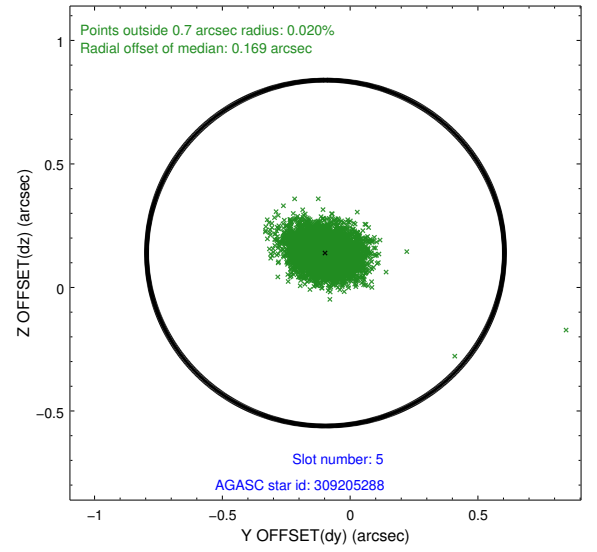
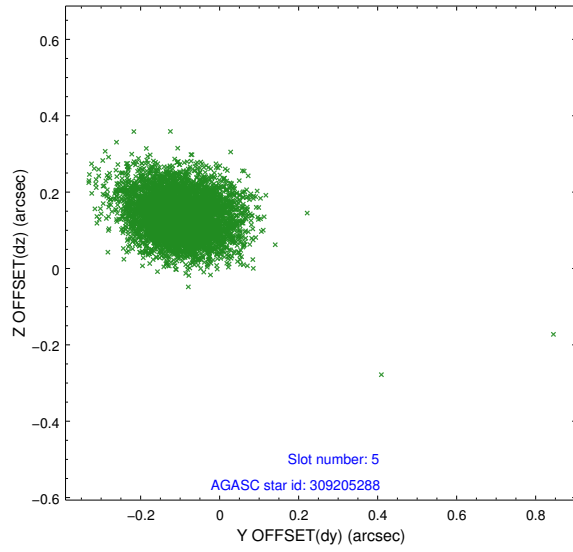
2.4.1 Slot 3



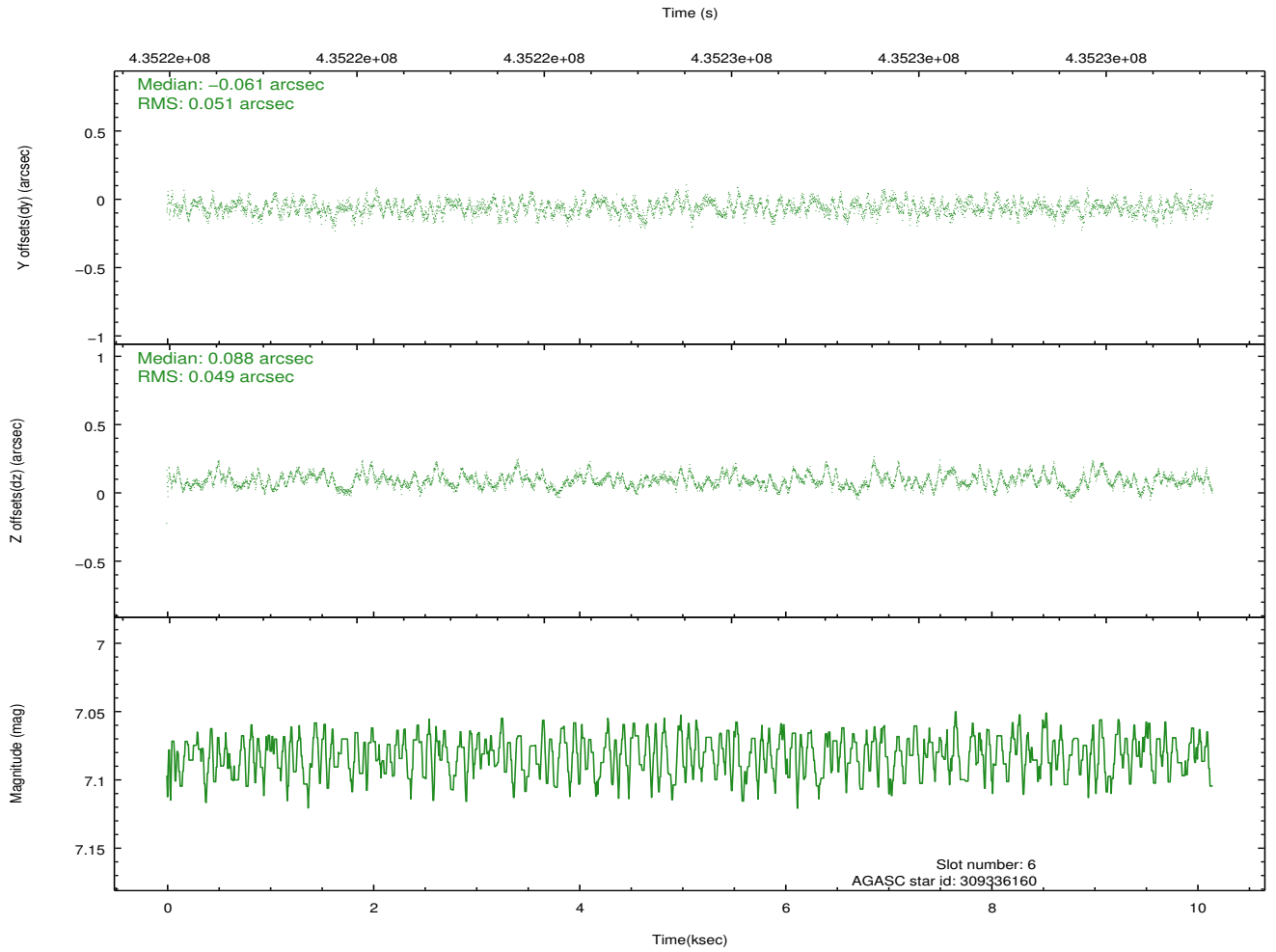
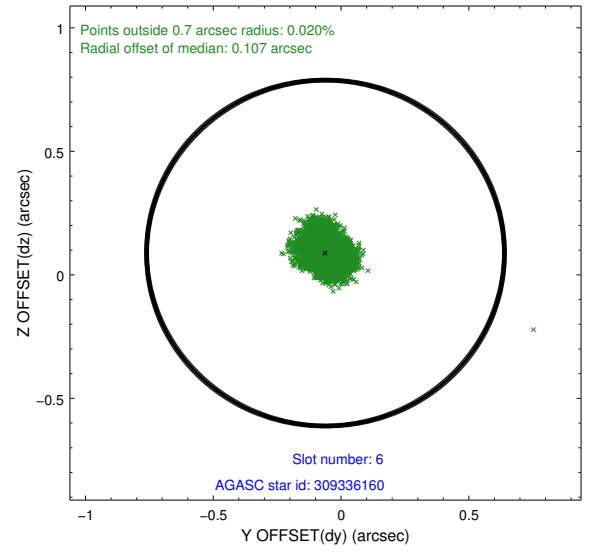
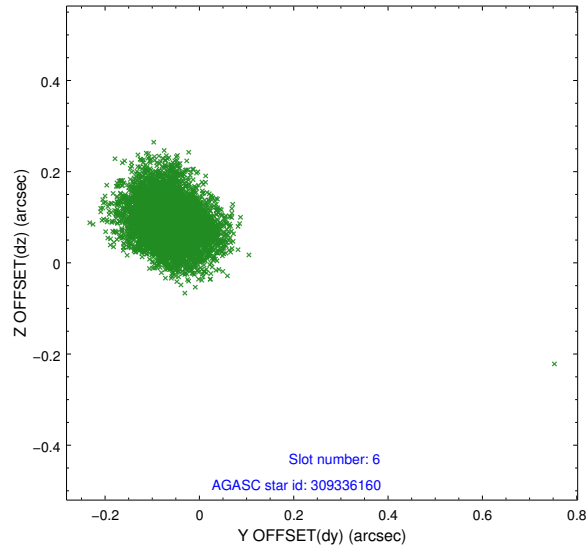
2.4.2 Slot 4



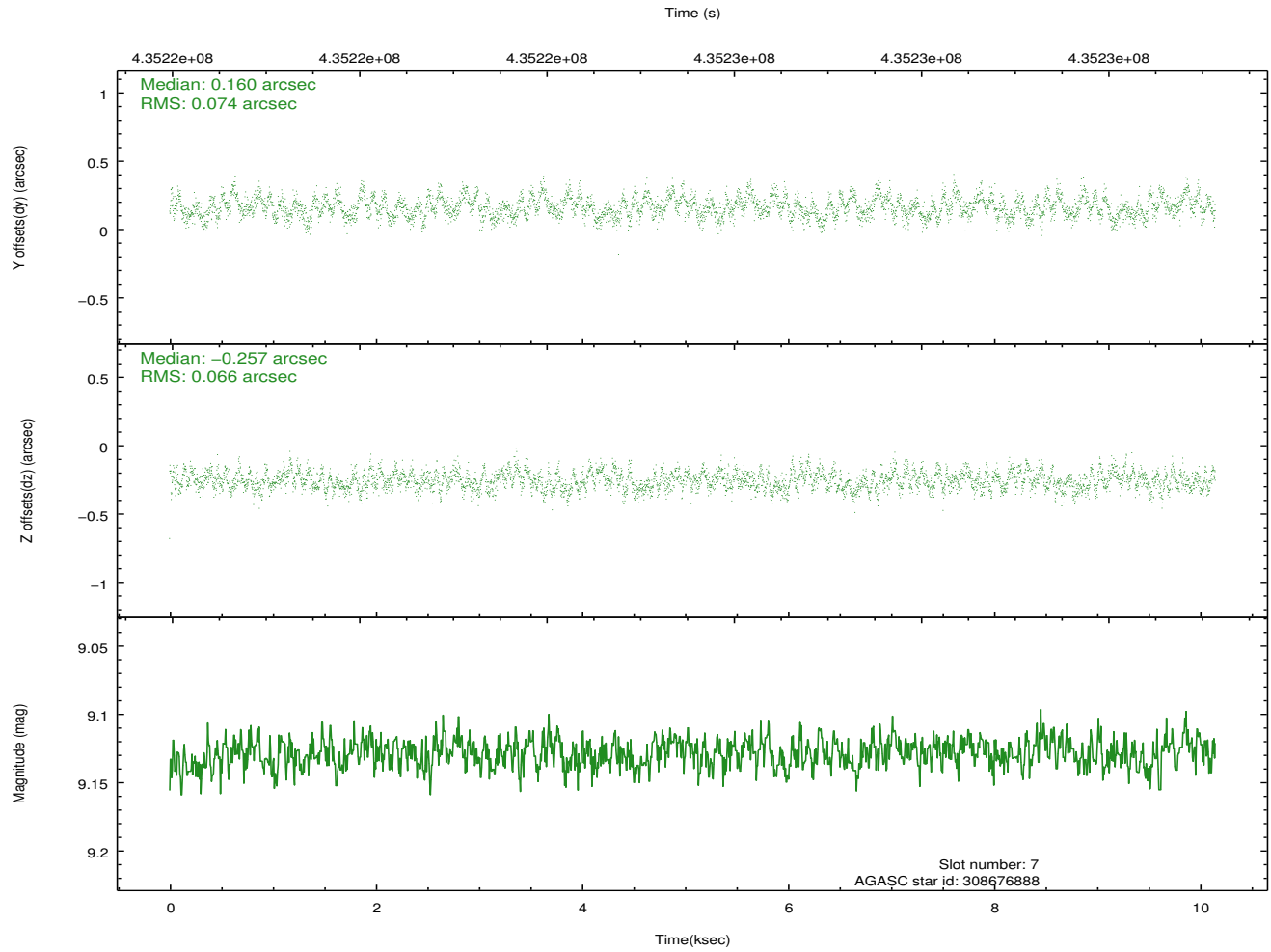
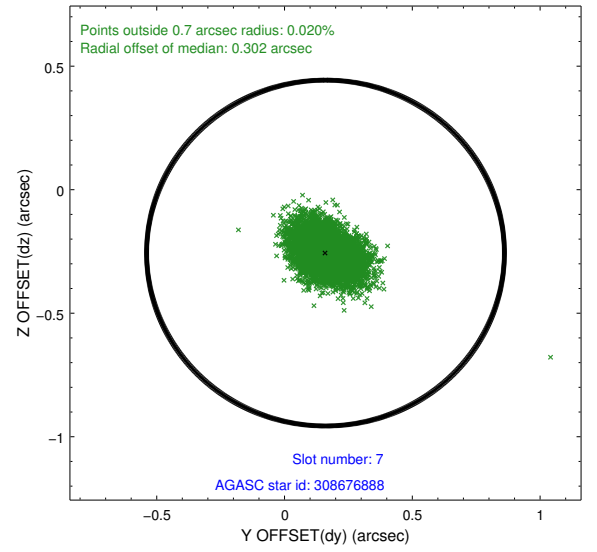
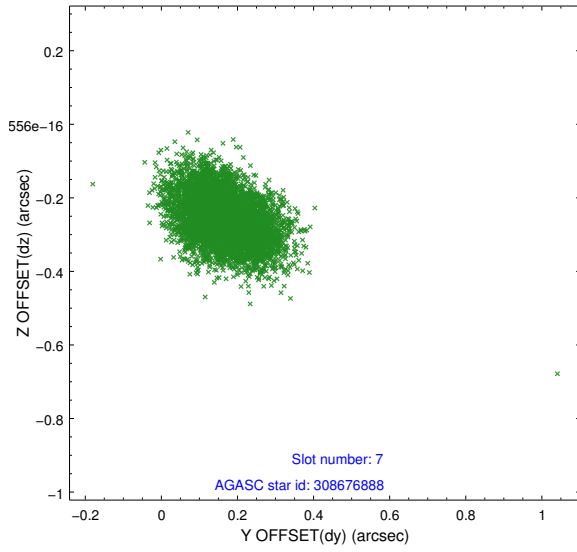
2.4.3 Slot 5



2.4.4 Slot 6

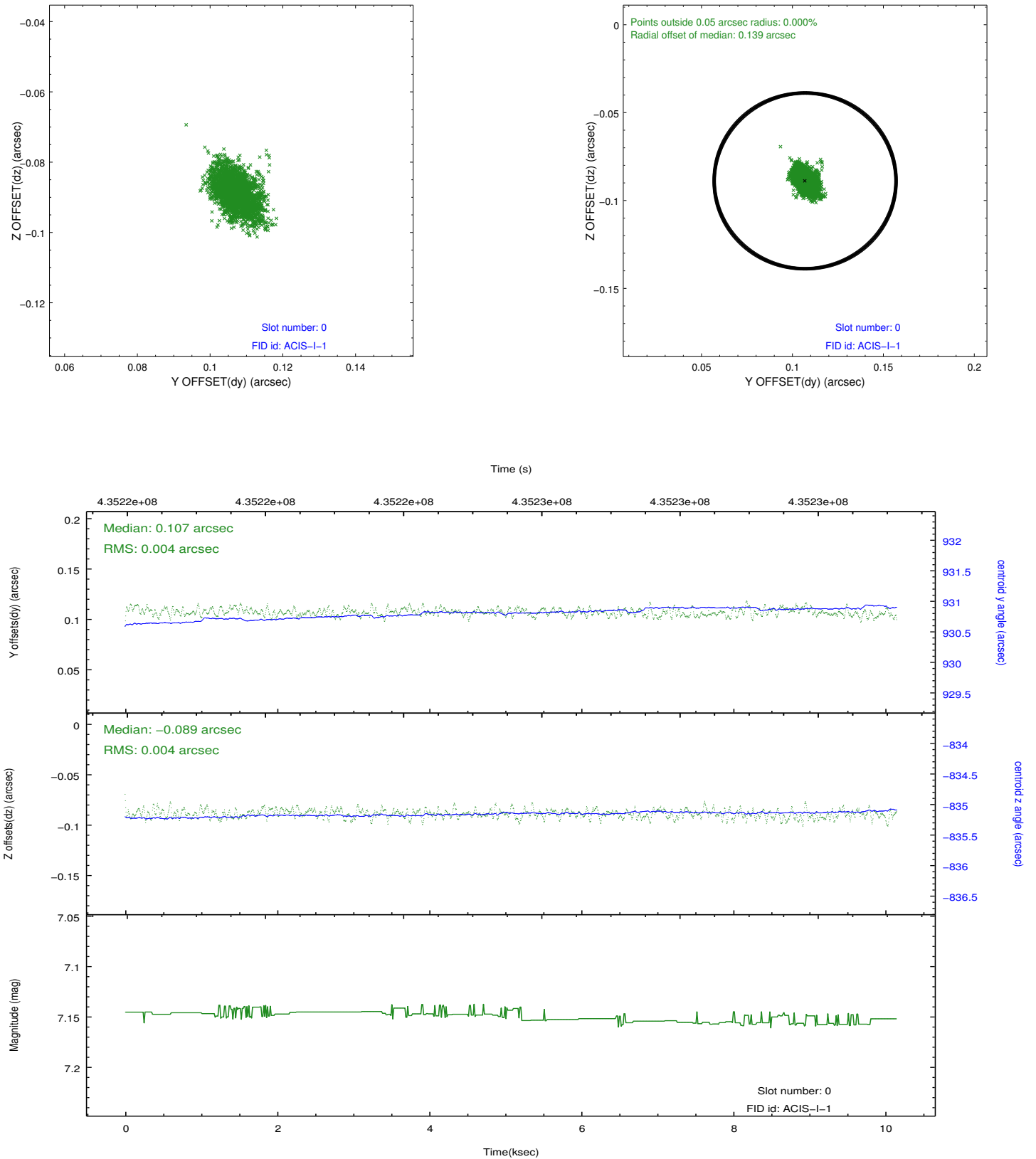


2.4.5 Slot 7

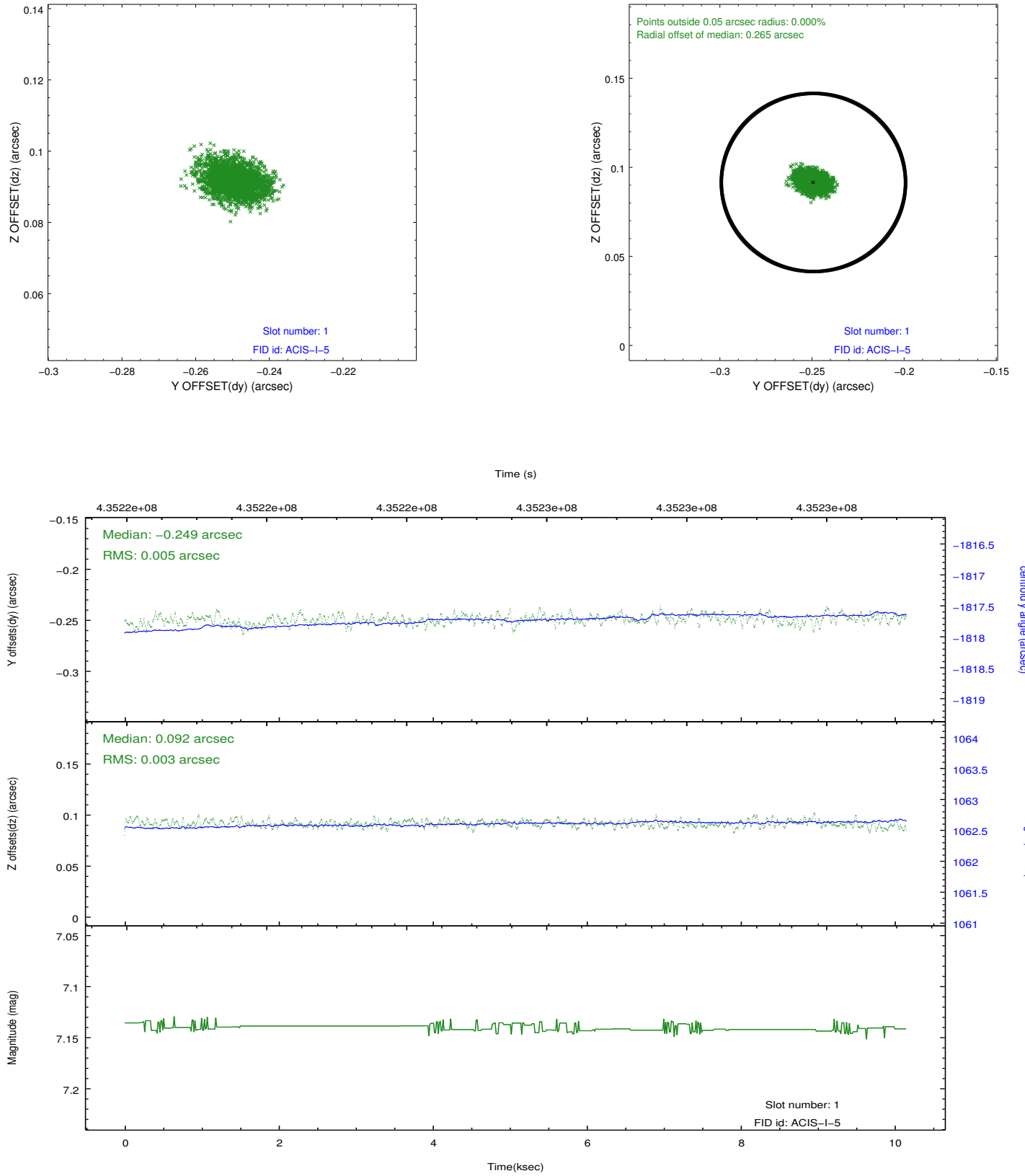


2.5 FID Slots

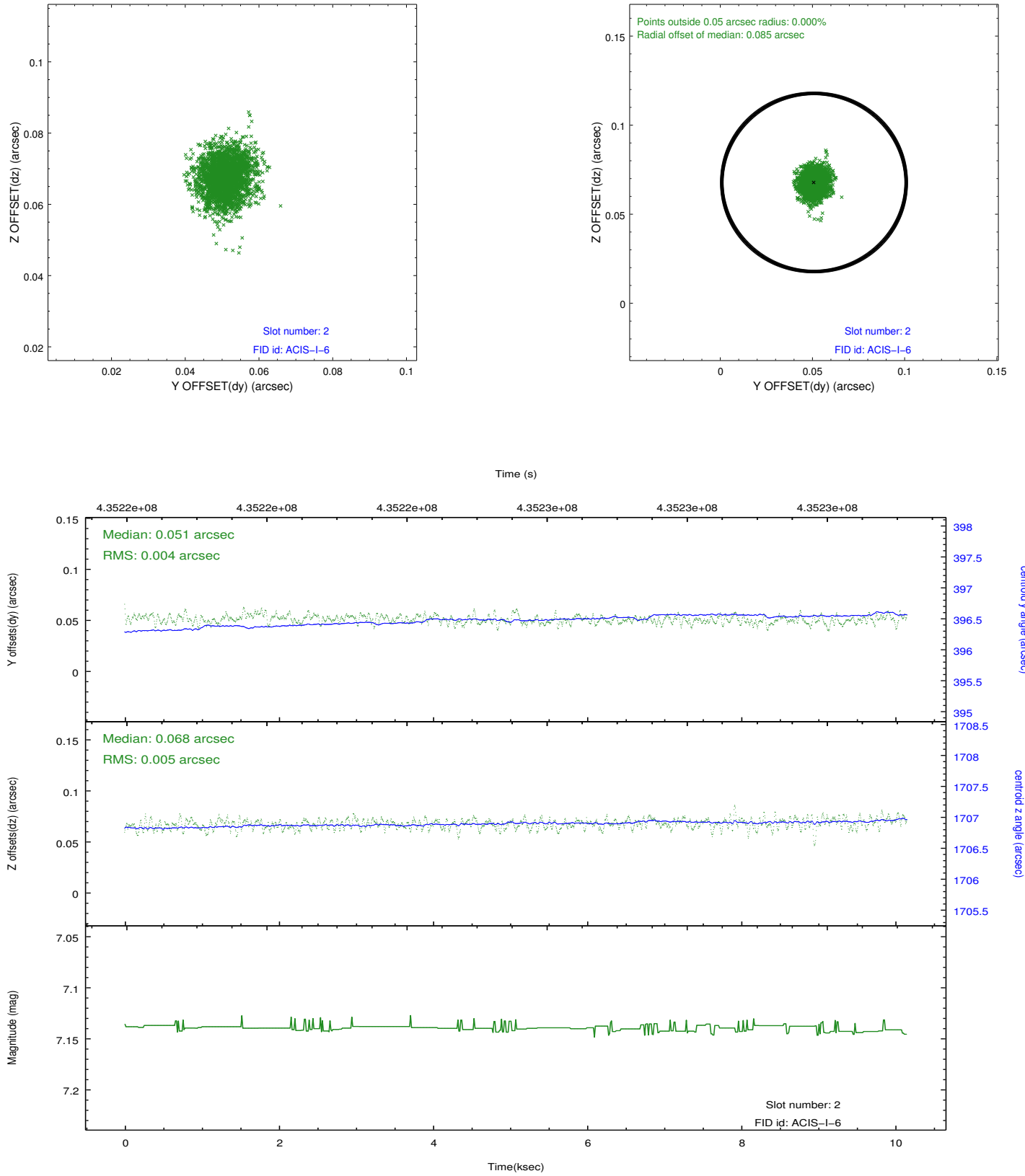
2.5.1 Slot 0



2.5.2 Slot 1



2.5.3 Slot 2



A Summary

A.1 Status

| | |
|----------------------------|-----------------|
| V&V Scientist | Jen Lauer |
| V&V Date (YYYY-MM-DD) | 2012.02.27 |
| V&V Edition | 1 |
| V&V Disposition and Status | OK |
| V&V Charge Time | 10.040859026909 |

A.2 Comments

Joint Proposal: CX0-Spitzer