

V&V Reference Report

L2 ASCDS Version : 8.4.3

Observation 12938 - L2 Version 2
Chandra X-Ray Center

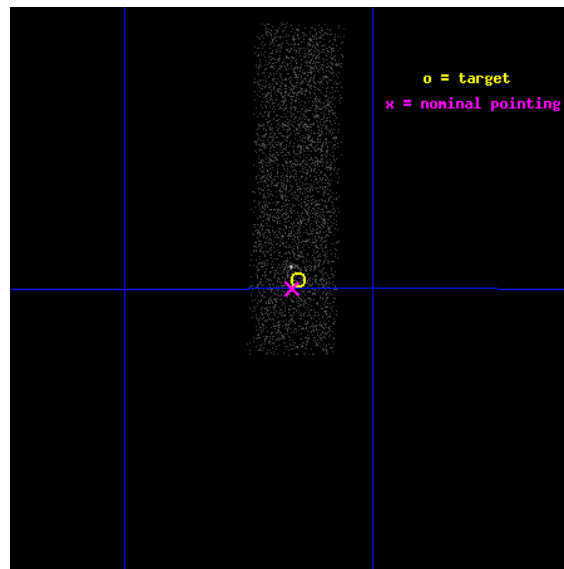
L2 Processing Date : Feb 18 2012

Contents

1	Front	2
2	OBI	3
2.1	OBI	3
2.1.1	Images	3
2.1.2	Bias	3
2.1.3	Parameters	4
2.1.4	Events	4
2.2	Compared Parameters	5
2.3	Aspect	6
2.4	Star Slots	9
2.4.1	Slot 3	9
2.4.2	Slot 4	10
2.4.3	Slot 5	11
2.4.4	Slot 6	12
2.4.5	Slot 7	13
2.5	FID Slots	14
2.5.1	Slot 0	14
2.5.2	Slot 1	15
2.5.3	Slot 2	16
A	Summary	17
A.1	Status	17
A.2	Comments	17

1 Front

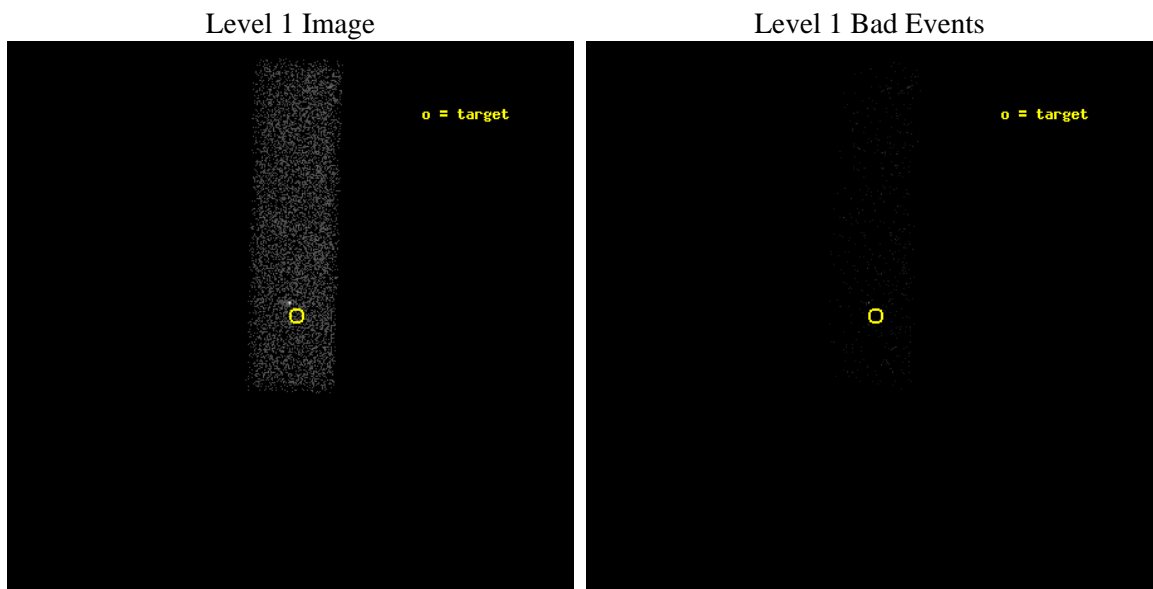
seq_num	900970	Sequence number
obs_id	12938	Observation id
title	Chandra Studies of Unidentified X-ray Sources in the Galactic Bulge	
observer	Dr. Hideyuki Mori	Principal investigator
object	1RXS J165739.1-294946	Source name
dtcycle	0	
cycle	P	events from which exps? Prim/Second/Both
ra_targ	254.412917	Observer's specified target RA [deg]
dec_targ	-29.829444	Observer's specified target Dec [deg]
ra_nom	254.41595422284	Nominal RA [deg]
dec_nom	-29.833412757191	Nominal Dec [deg]
roll_nom	271.39492767015	Nominal Roll [deg]
revision	2	Processing version of data
ontime	4026.1925016046	Sum of GTIs [s]
livetime	3829.7274817888	Livetime [s]
ontime7	4026.1925016046	Sum of GTIs [s]
l2events	4779	Number of level 2 events



2 OBI

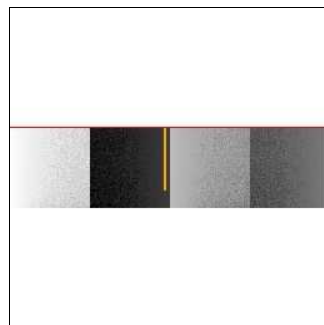
2.1 OBI

2.1.1 Images



2.1.2 Bias

Chip 7



2.1.3 Parameters

obi_num	0	Obi number	sched_exp_time	4000.000000	[s] Scheduled observation exposure time
ascdsver	8.4.3	Processing system revision	ontime	4026.1925016046	Sum of GTIs [s]
caldsver	4.4.8	 	ontime7	4026.1925016046	Sum of GTIs [s]
date	2012-02-18T17:28:14	Date and time of file creation	l1events	9169	Number of level 1 events
revision	2	Processing version of data			

2.1.4 Events

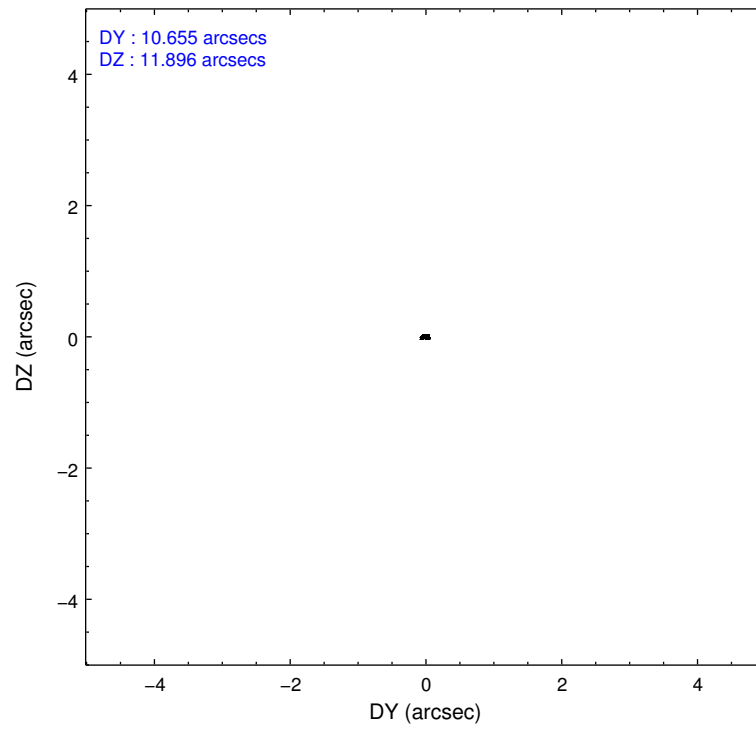
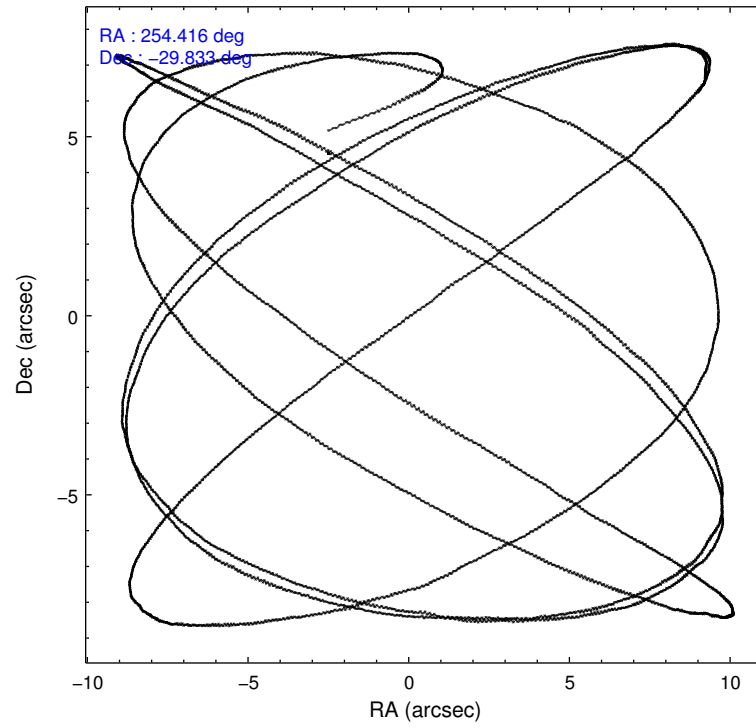
	ccd 7
level 1 events	9169
rejected events	4201
rejected %	45%

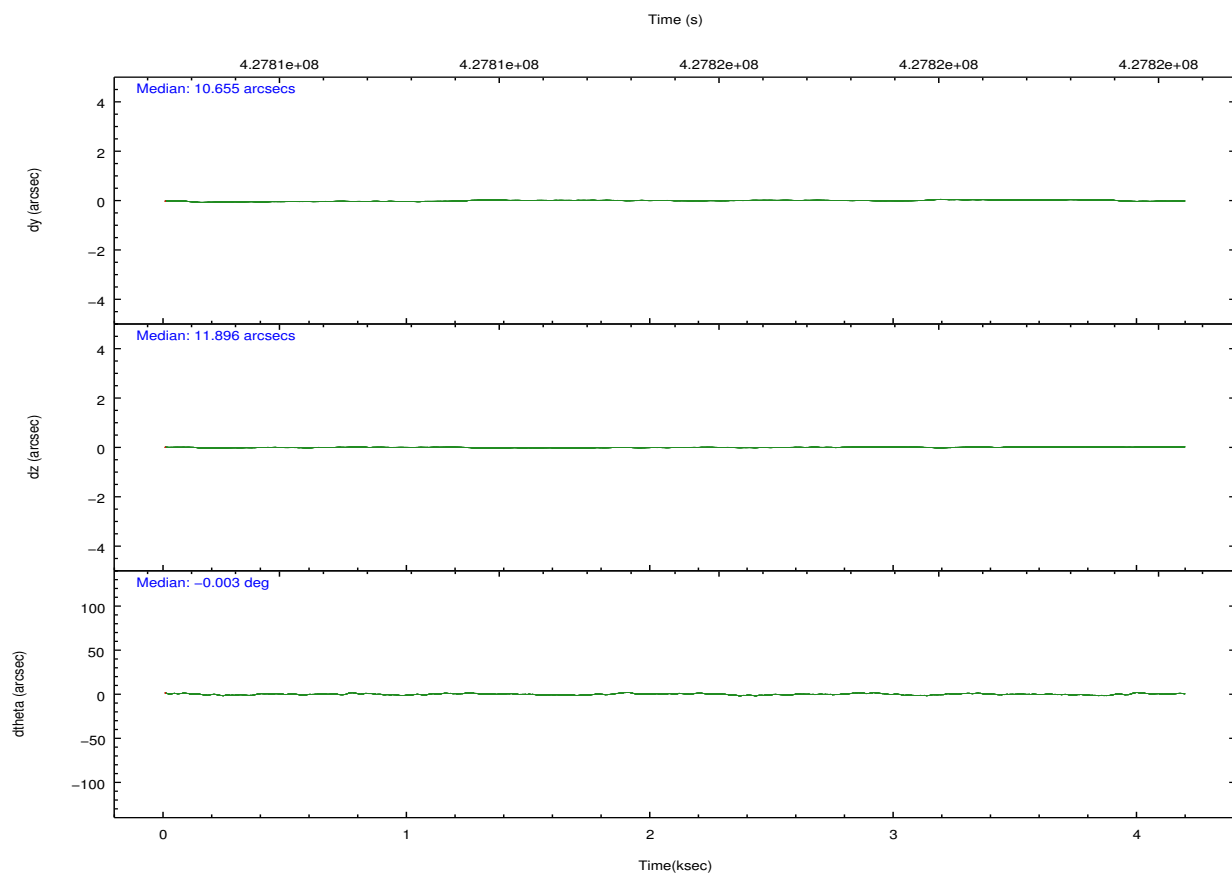
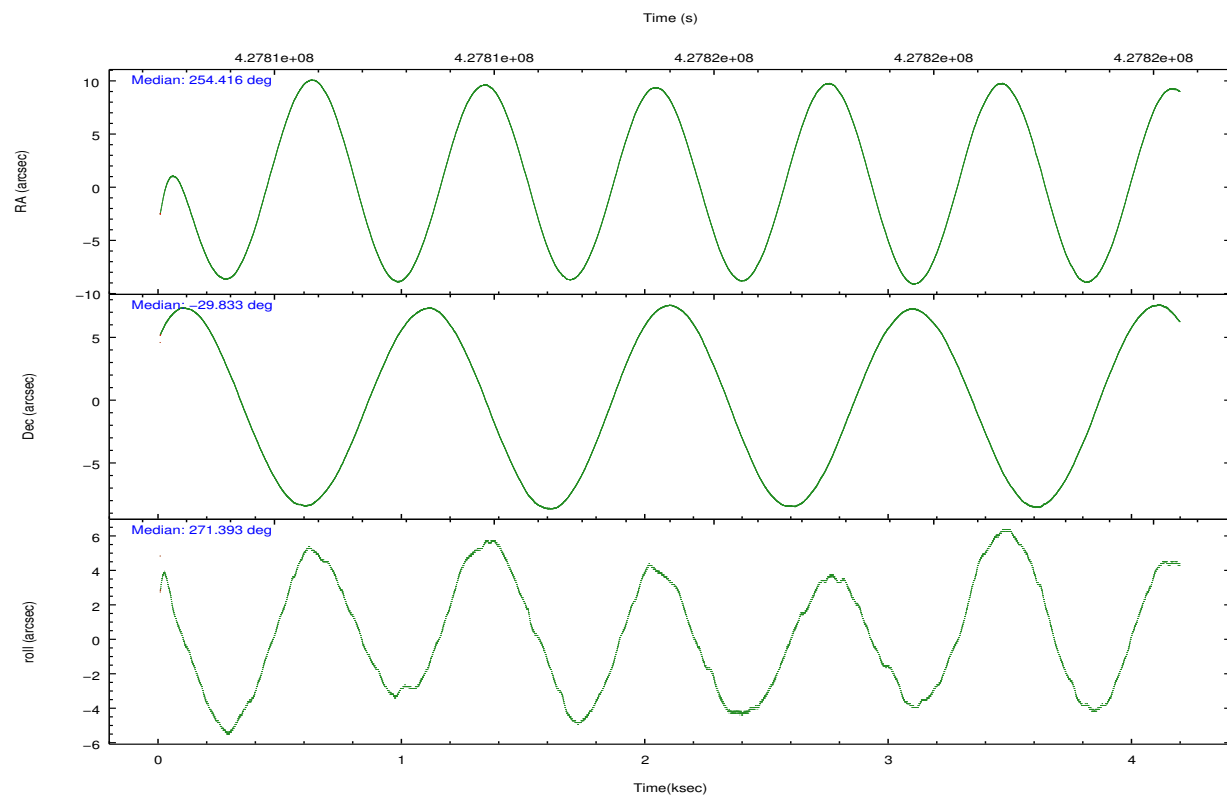
	ccd 7
grade 0 events	705
	7%
grade 1 events	15
	0%
grade 2 events	1013
	11%
grade 3 events	554
	6%
grade 4 events	574
	6%
grade 5 events	873
	9%
grade 6 events	2124
	23%
grade 7 events	3311
	36%

2.2 Compared Parameters

Parameter	Planned	Actual	Parameter	Planned	Actual
Instrument	ACIS	ACIS	Obspar format version number	7	7
Detector	ACIS-7	ACIS-7	Obspar file type	PREDICTED	ACTUAL
Grating	NONE	NONE	Obspar update status	NONE	UPDATED
Data mode	VFAINT	VFAINT	Number of optional ACIS chips dropped	0	0
Observation mode	POINTING	POINTING	On-chip summing requested	N	N
[deg] Pointing RA	254.399183	254.4159542228367	Subarray requested	CUSTOM	1/4
[deg] Pointing Dec	-29.810361	-29.83341275719134	Subarray start row	385	385
[deg] Pointing Roll	271.229937	271.3949276701513	Subarray row count	256	256
[mm] SIM focus pos	-0.684267	-0.6828225247311905	Alternating exposures requested	N	N
[mm] SIM defocus	0	0.001444936568705701	[s] Primary exposure time	0.000000	0.8
[mm] SIM translation stage pos	-190.132523	-190.1400660498719			
[mm] SIM translation stage offset	0	0.00754346686406393			
[s] Observation start time (MET)	427812903.184000	427811584.98783			
Observation start date	2011-07-23T12:53:57	2011-07-23T12:33:04			
[s] Observation end time (MET)	427816903.184000	427817770.35065			
Observation end date	2011-07-23T14:00:37	2011-07-23T14:16:10			
Read mode	TIMED	TIMED			

2.3 Aspect



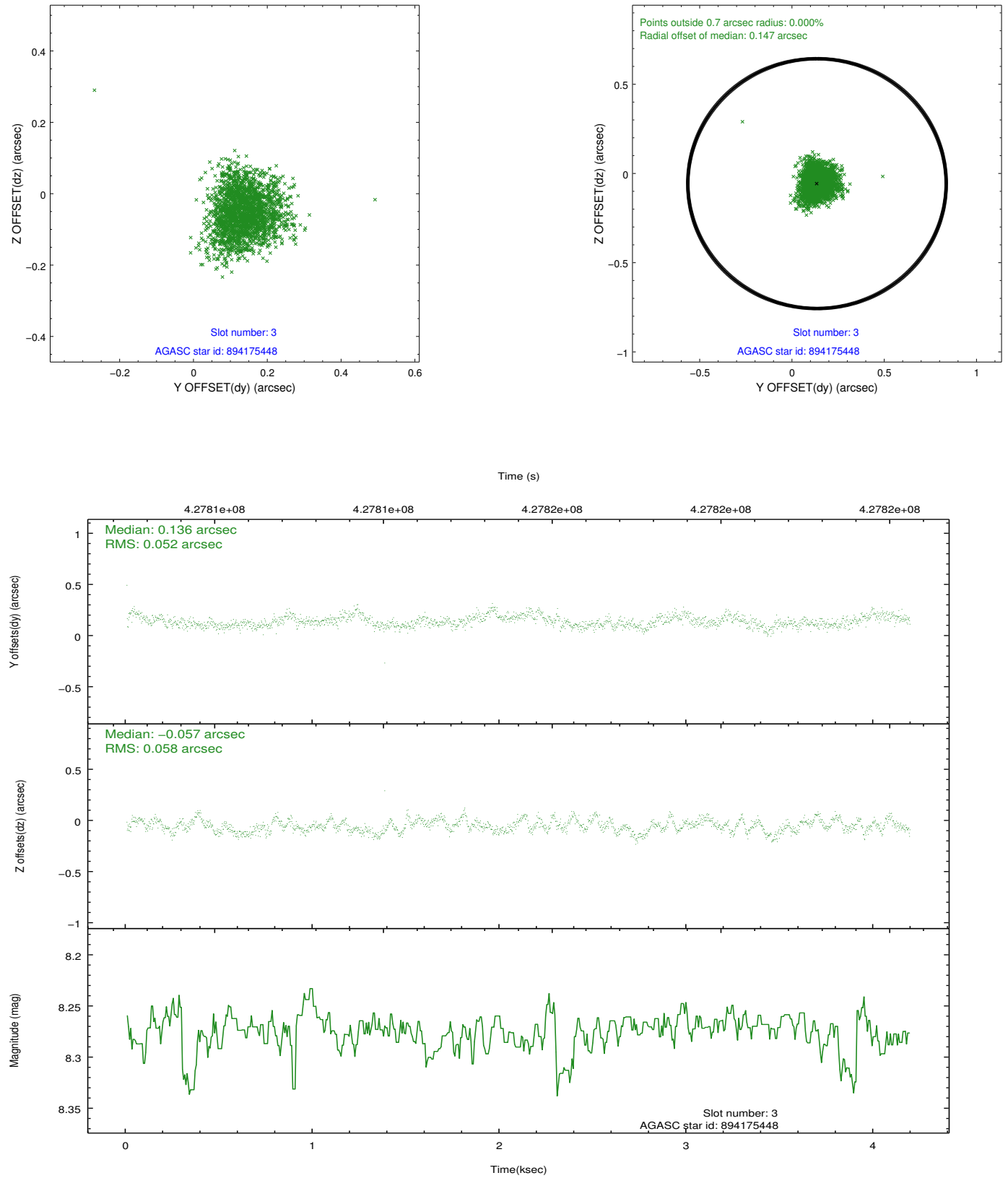


Slot Statistics

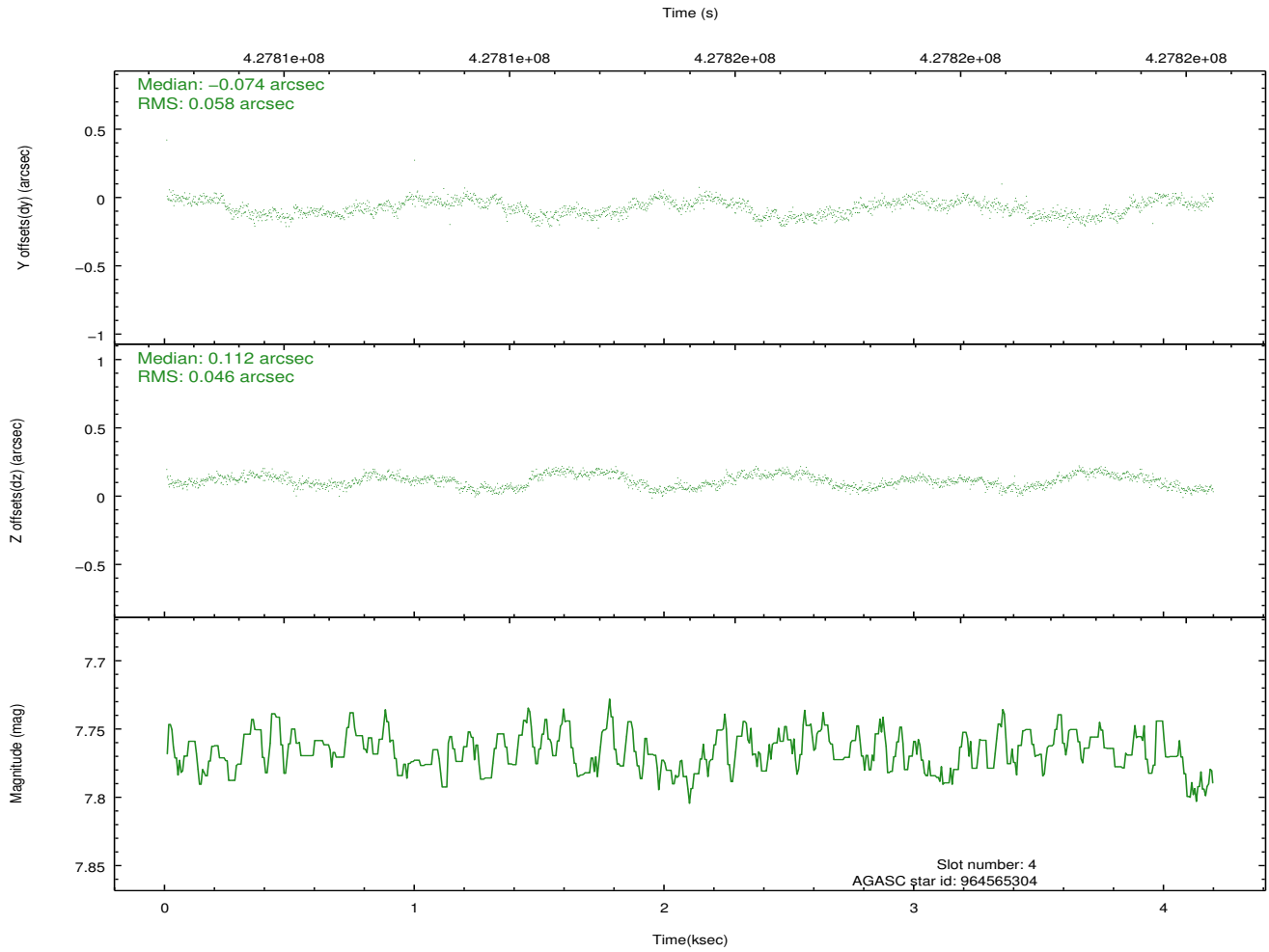
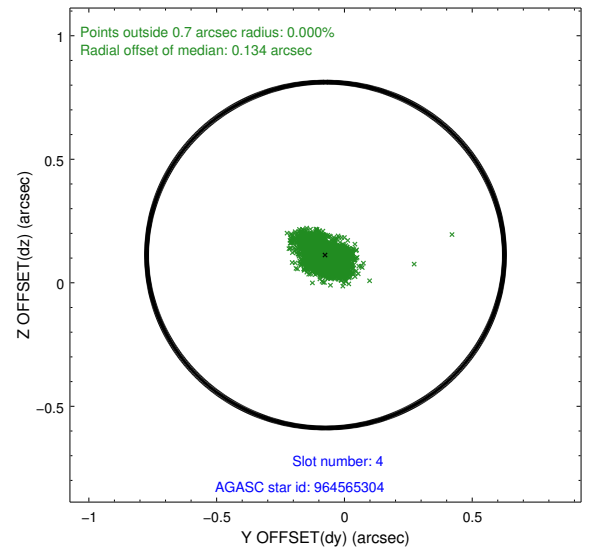
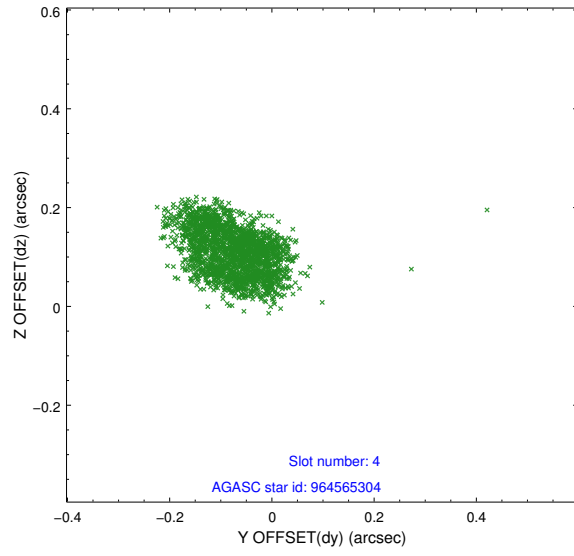
slot	status	id	mag	n_pts	med_dy	med_dz	dr1	dr2	ra	dec	mean_y	mean_z
0	FID	ACIS-S-2	7.02	1023	-0.063	-0.047	0.009	0.016	0.000000	0.000000	-763.59	-1733.23
1	FID	ACIS-S-4	7.09	1023	0.223	0.043	0.013	0.023	0.000000	0.000000	2149.33	173.77
2	FID	ACIS-S-5	7.14	1023	-0.192	0.012	0.010	0.015	0.000000	0.000000	-1814.63	169.15
3	GUIDE	894175448	8.27	2042	0.136	-0.057	0.083	0.133	253.752788	-29.852831	116.36	-2021.26
4	GUIDE	964565304	7.77	2045	-0.074	0.112	0.080	0.120	254.033642	-30.318432	1806.83	-1175.68
5	GUIDE	964697232	9.13	2044	0.196	-0.143	0.156	0.224	254.697519	-30.172036	1324.65	899.83
6	GUIDE	964701696	8.87	2044	-0.071	0.137	0.097	0.156	254.649267	-30.120754	1136.59	755.26
7	GUIDE	894192264	7.47	2044	-0.177	-0.034	0.061	0.093	253.884579	-29.276893	-1949.84	-1574.24

2.4 Star Slots

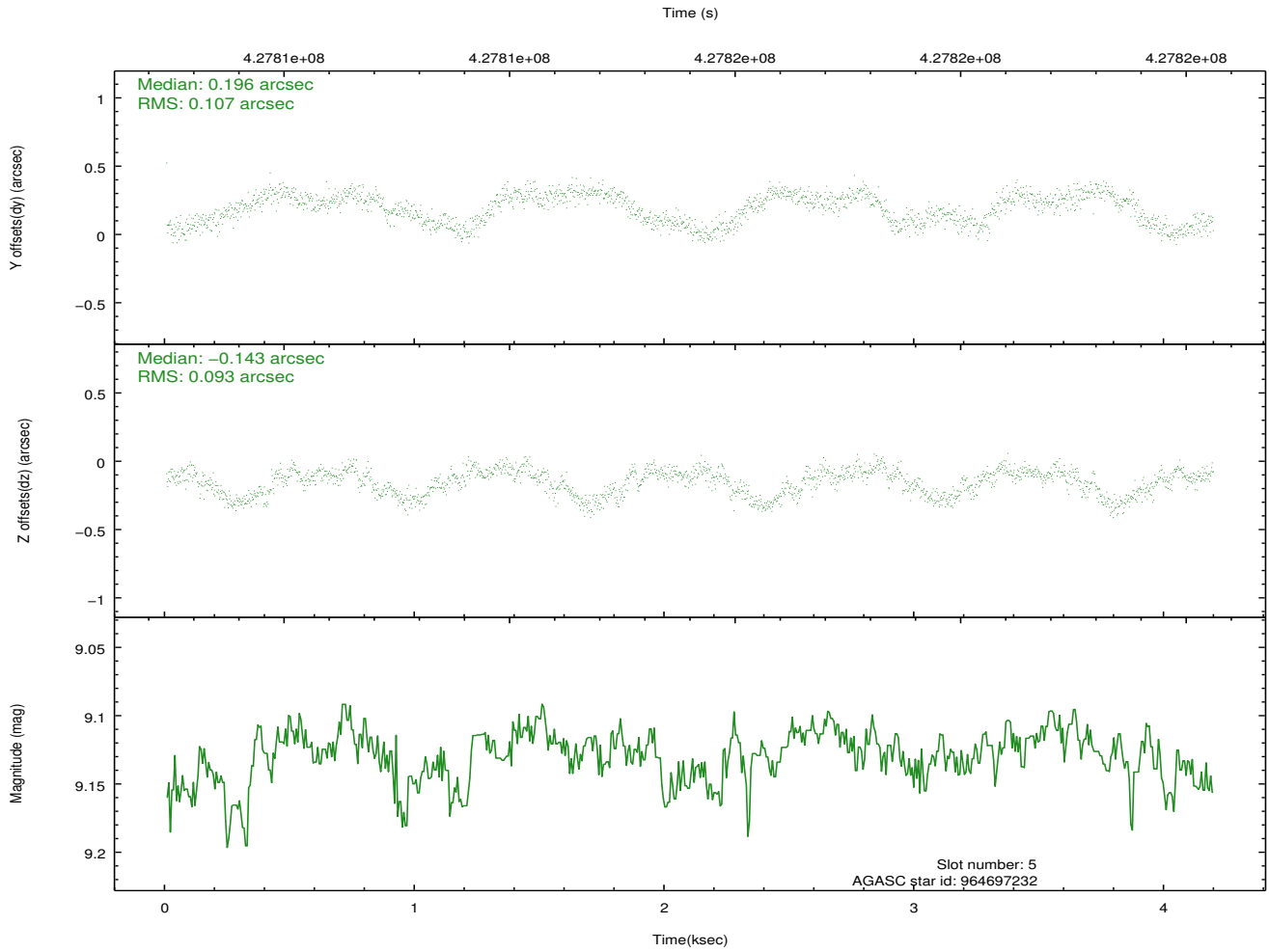
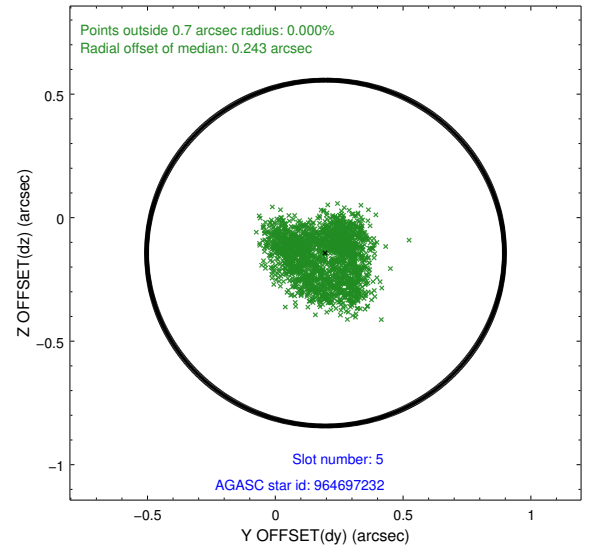
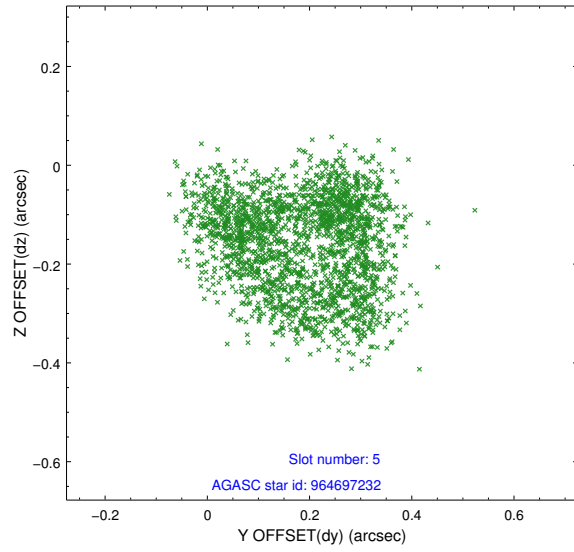
2.4.1 Slot 3



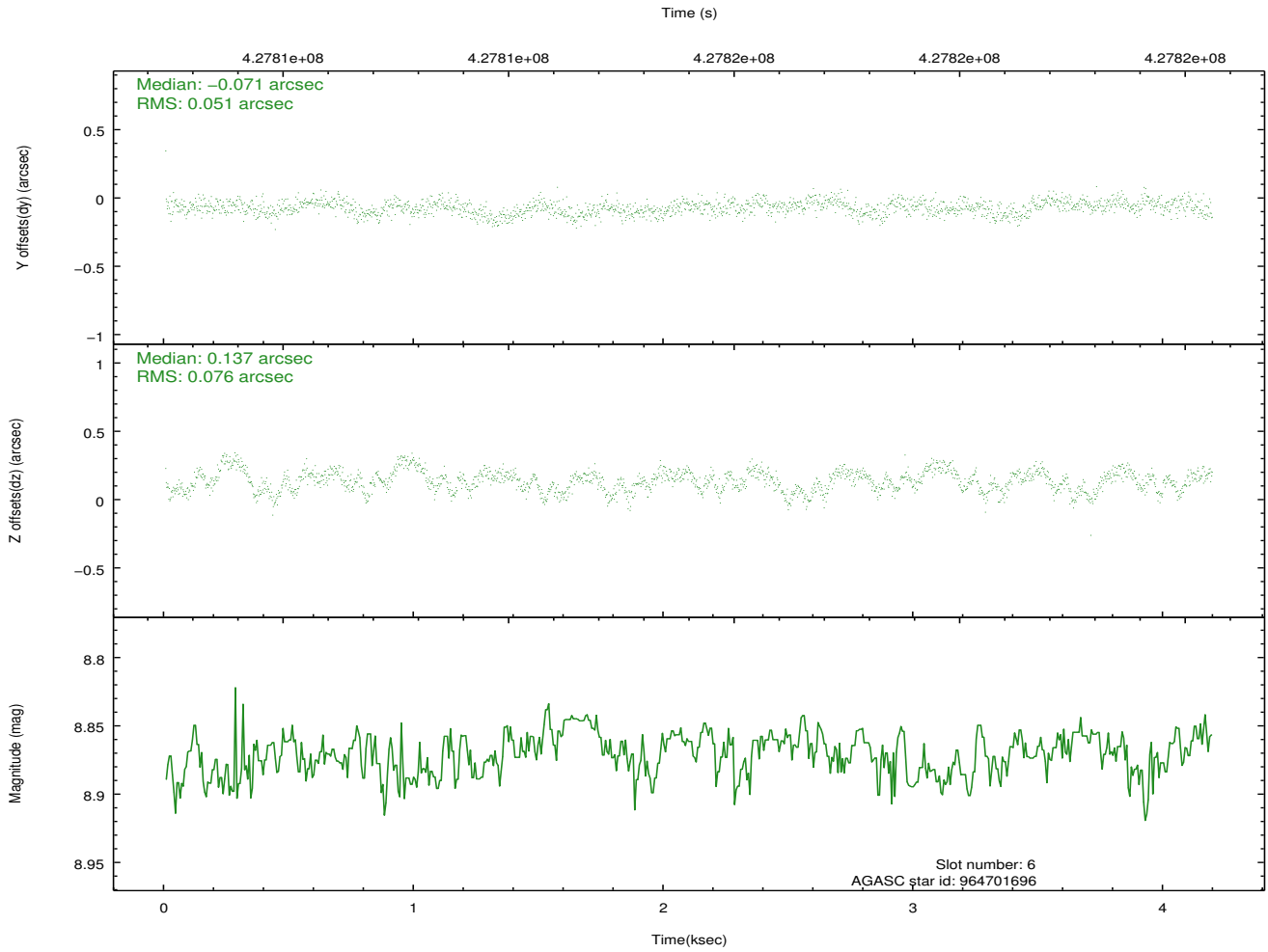
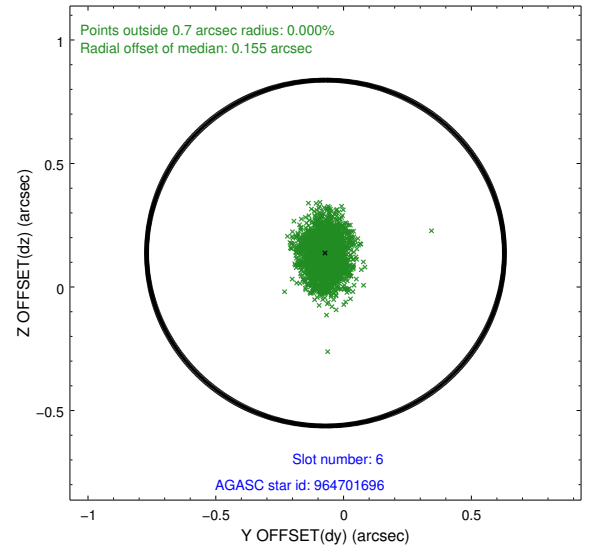
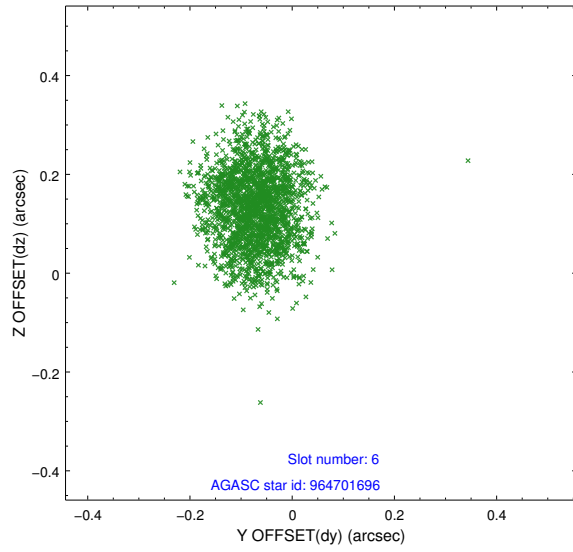
2.4.2 Slot 4



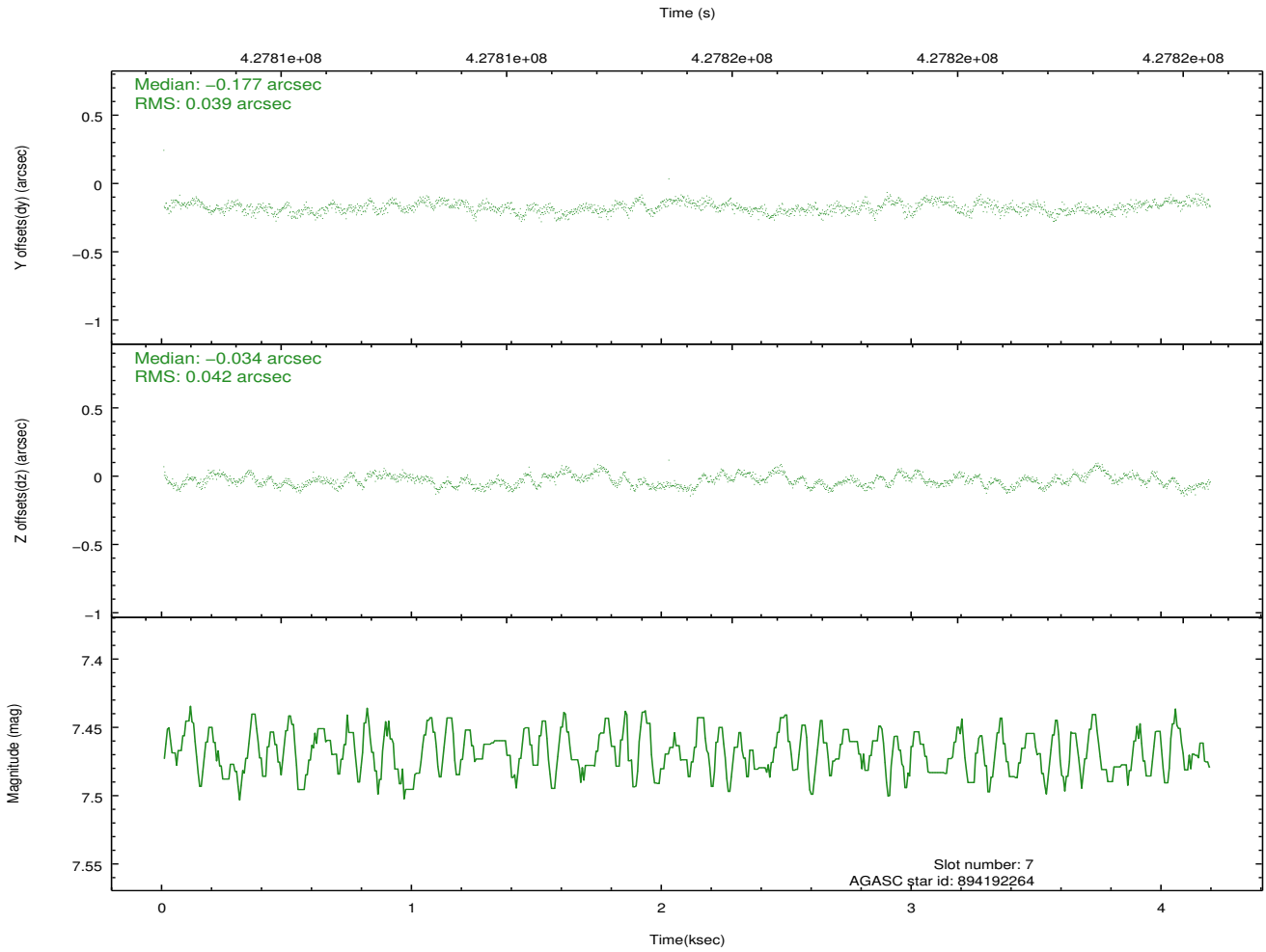
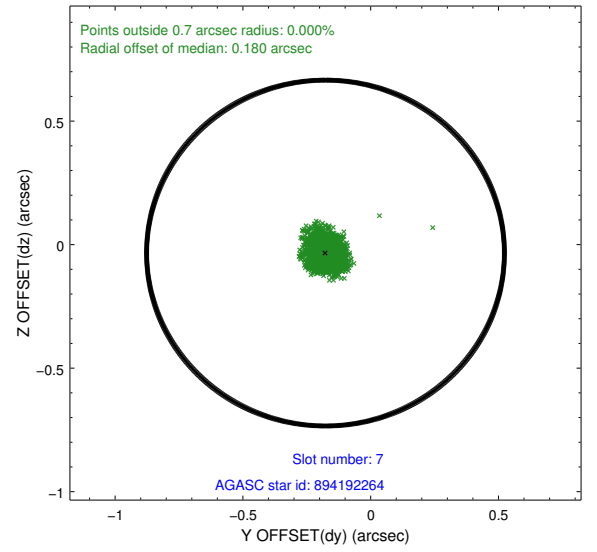
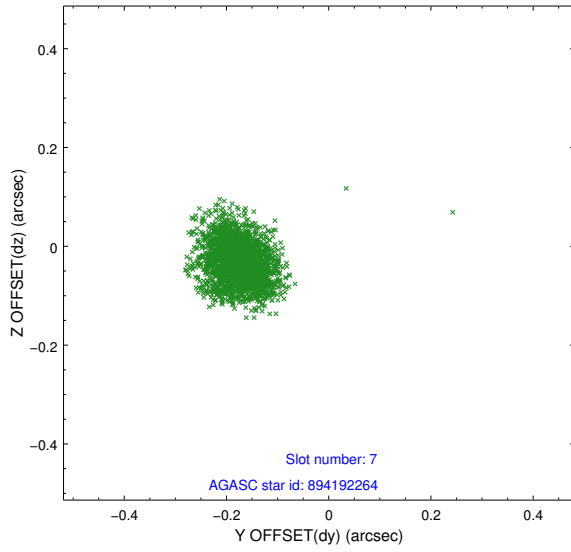
2.4.3 Slot 5



2.4.4 Slot 6

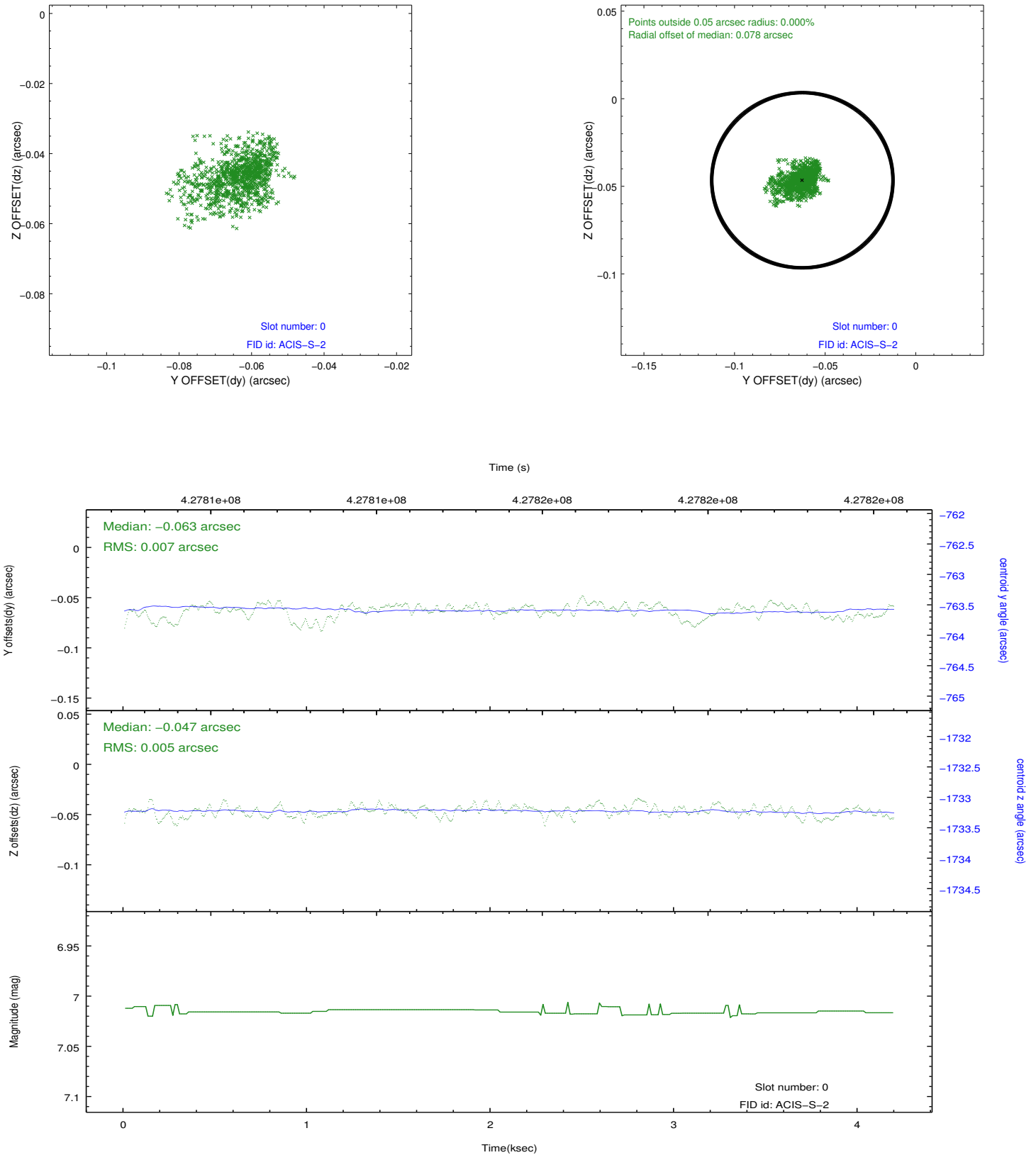


2.4.5 Slot 7

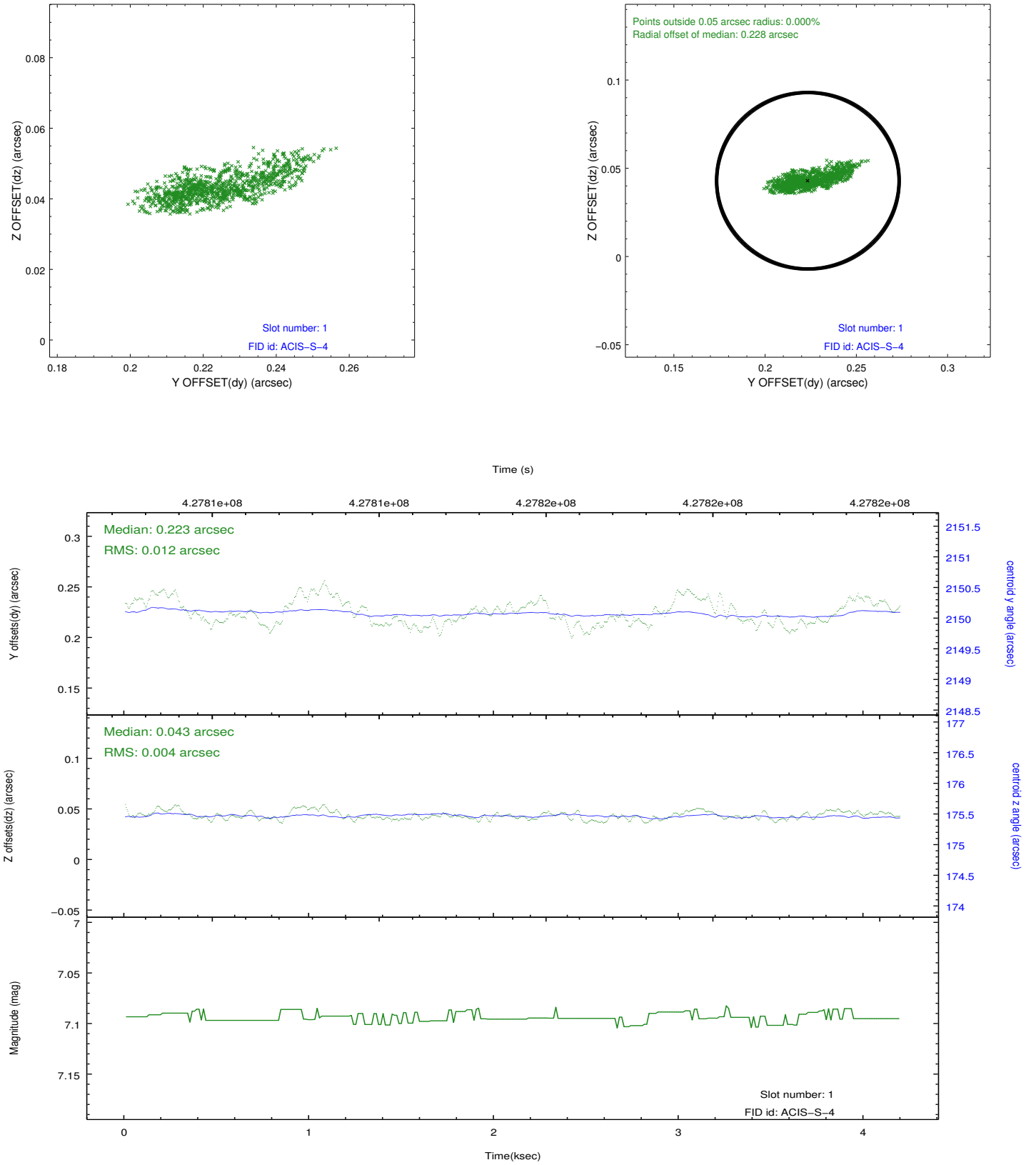


2.5 FID Slots

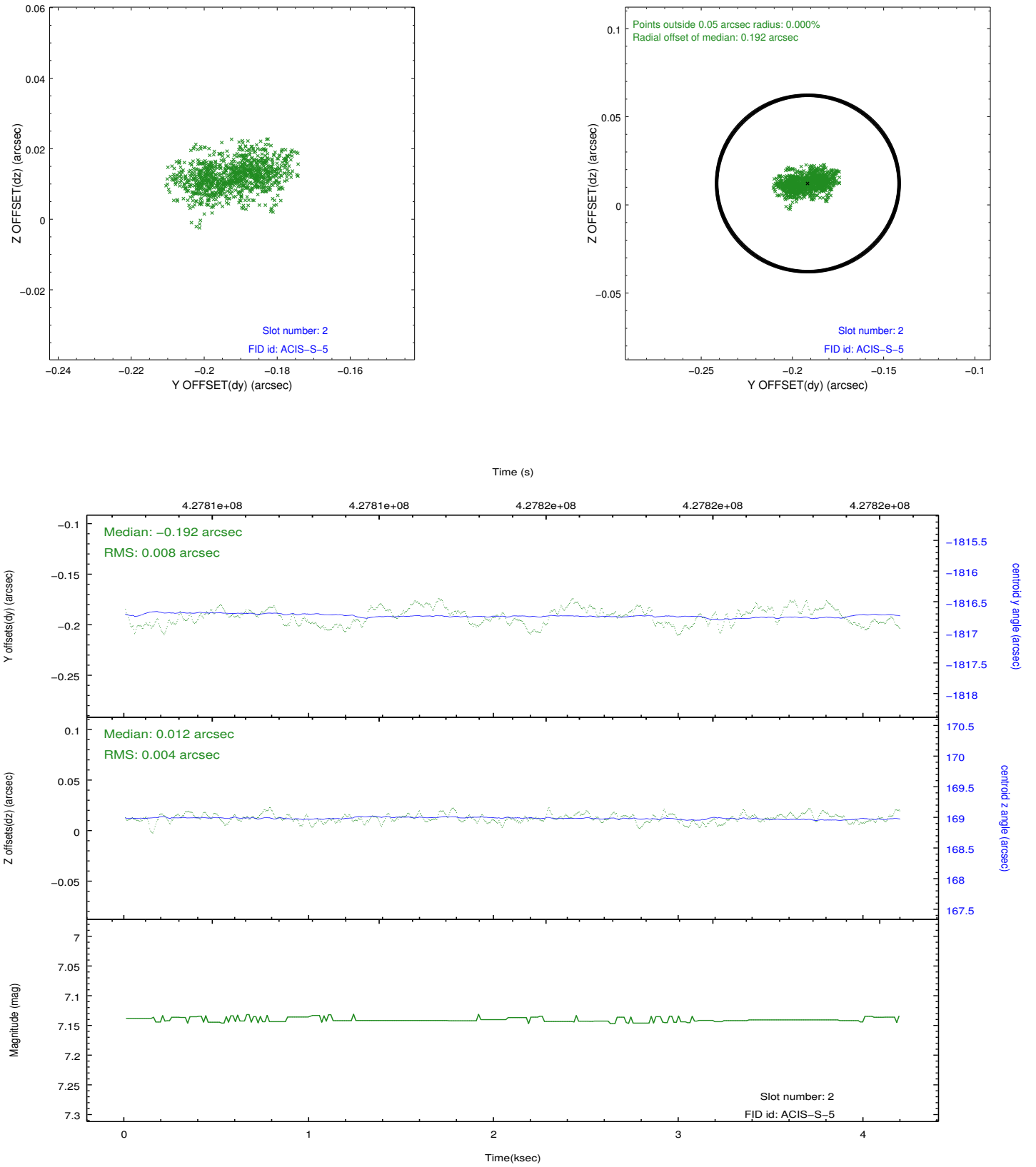
2.5.1 Slot 0



2.5.2 Slot 1



2.5.3 Slot 2



A Summary

A.1 Status

V&V Scientist	Beth Sundheim
V&V Date (YYYY-MM-DD)	2012.02.21
V&V Edition	1
V&V Disposition and Status	OK
V&V Charge Time	4.0261925039887

A.2 Comments