

V&V Reference Report

L2 ASCDS Version : 8.4.3

Observation 13424 - L2 Version 3
Chandra X-Ray Center

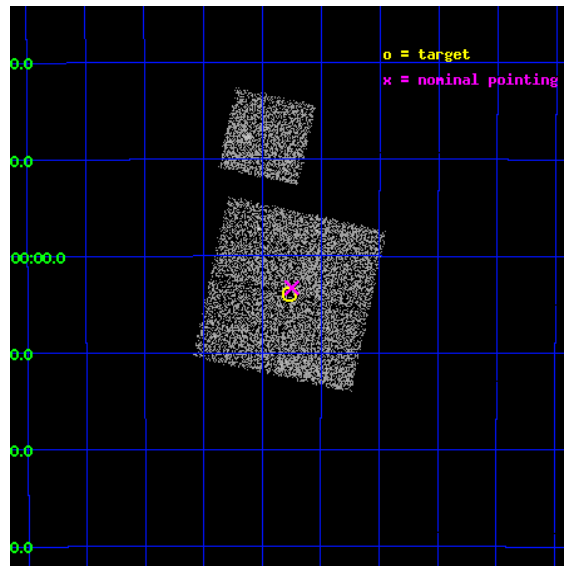
L2 Processing Date : Feb 28 2012

Contents

1	Front	2
2	OBI	3
2.1	OBI	3
2.1.1	Images	3
2.1.2	Bias	3
2.1.3	Parameters	4
2.1.4	Events	4
2.2	Compared Parameters	5
2.3	Aspect	6
2.4	Star Slots	9
2.4.1	Slot 3	9
2.4.2	Slot 4	10
2.4.3	Slot 5	11
2.4.4	Slot 6	12
2.5	FID Slots	13
2.5.1	Slot 0	13
2.5.2	Slot 1	14
2.5.3	Slot 2	15
A	Summary	16
A.1	Status	16
A.2	Comments	16

1 Front

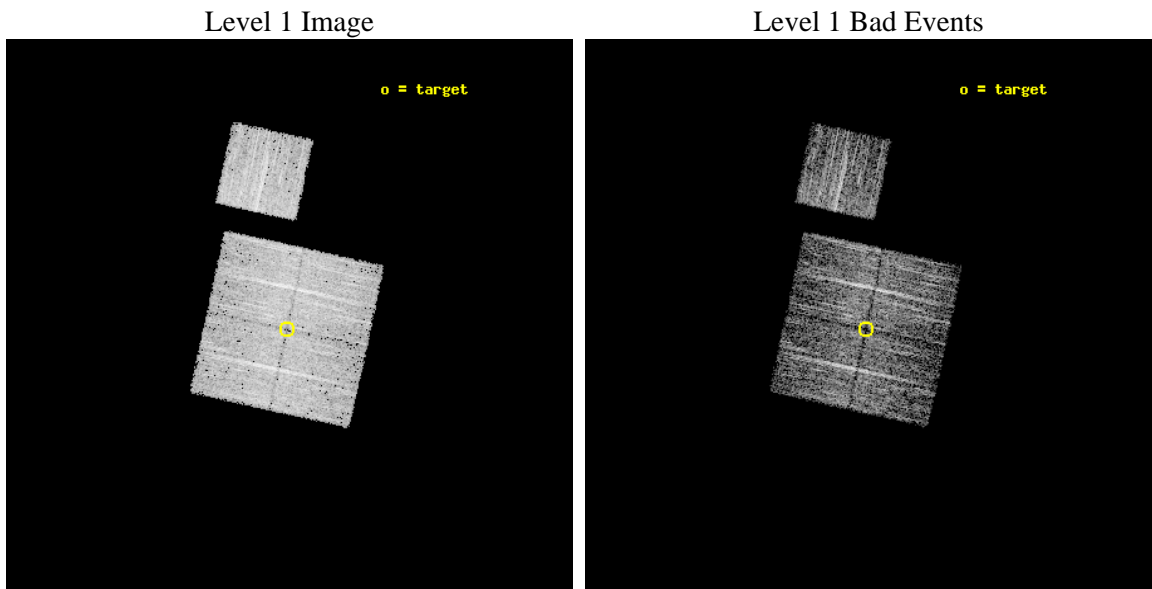
seq_num	801093	Sequence number
obs_id	13424	Observation id
title	The Outer Limits of Clusters with Chandra and Suzaku	Proposal titl
observer	Dr. Eric Miller	Principal investigator
object	RXCJ0605_Field4	Source name
dtycycle	0	
cycle	P	events from which exps? Prim/Second/Both
ra_targ	91.442462	Observer's specified target RA [deg]
dec_targ	-35.065844	Observer's specified target Dec [deg]
ra_nom	91.436736376104	Nominal RA [deg]
dec_nom	-35.054936362806	Nominal Dec [deg]
roll_nom	12.459125552724	Nominal Roll [deg]
revision	3	Processing version of data
ontime	5054.7470939755	Sum of GTIs [s]
livetime	4988.7031019421	Livetime [s]
ontime0	5054.7060539722	Sum of GTIs [s]
ontime1	5054.7470939755	Sum of GTIs [s]
ontime2	5054.7881339788	Sum of GTIs [s]
ontime3	5054.8291739821	Sum of GTIs [s]
ontime6	5054.6650139689	Sum of GTIs [s]
l2events	16044	Number of level 2 events



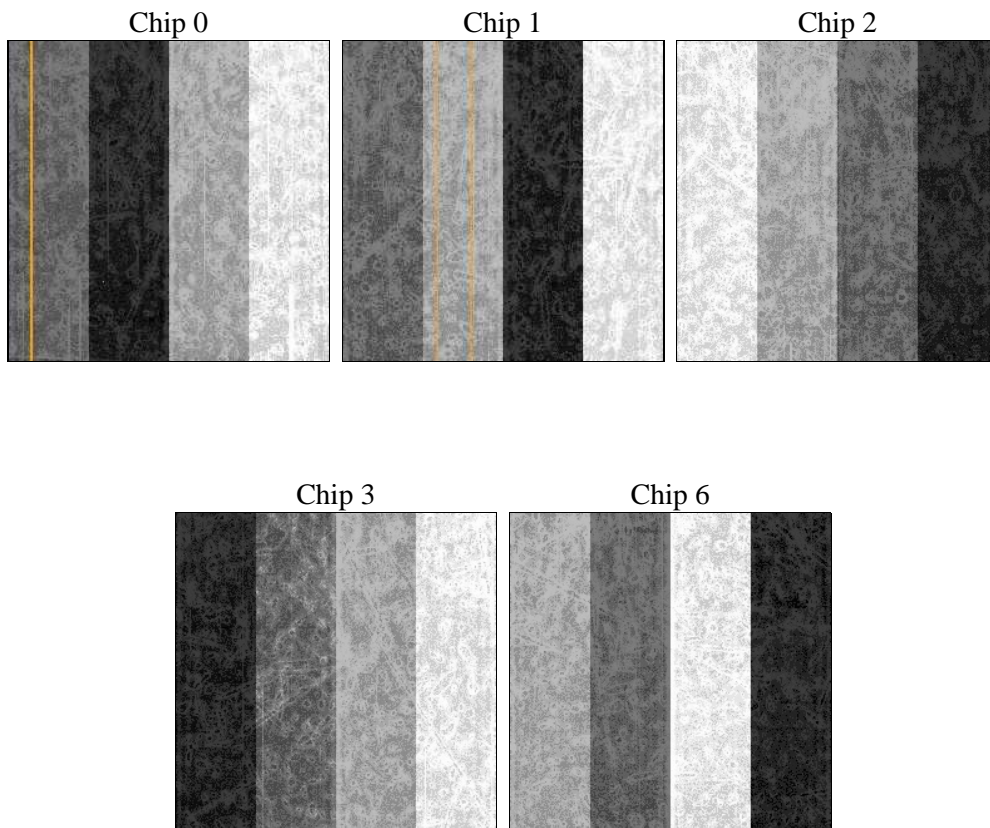
2 OBI

2.1 OBI

2.1.1 Images



2.1.2 Bias



2.1.3 Parameters

obi_num	0	Obi number	sched_exp_time	5000.000000	[s] Scheduled observation exposure time
ascdsver	8.4.3	Processing system revision	ontime	5054.7470939755	Sum of GTIs [s]
caldsver	4.4.8	 	ontime0	5054.7060539722	Sum of GTIs [s]
date	2012-02-28T17:14:31	Date and time of file creation	ontime1	5054.7470939755	Sum of GTIs [s]
revision	3	Processing version of data	ontime2	5054.7881339788	Sum of GTIs [s]
			ontime3	5054.8291739821	Sum of GTIs [s]
			ontime6	5054.6650139689	Sum of GTIs [s]
			l1events	156739	Number of level 1 events

2.1.4 Events

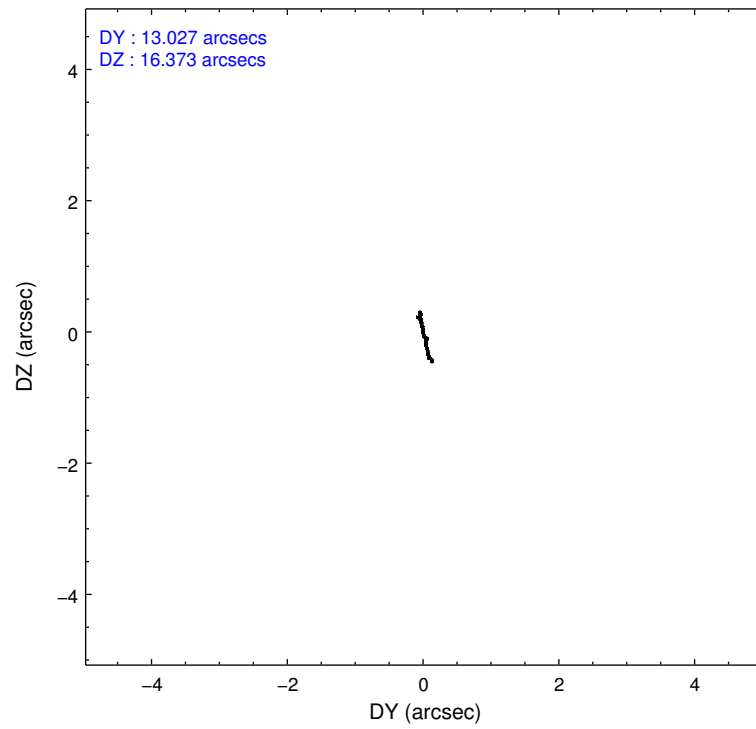
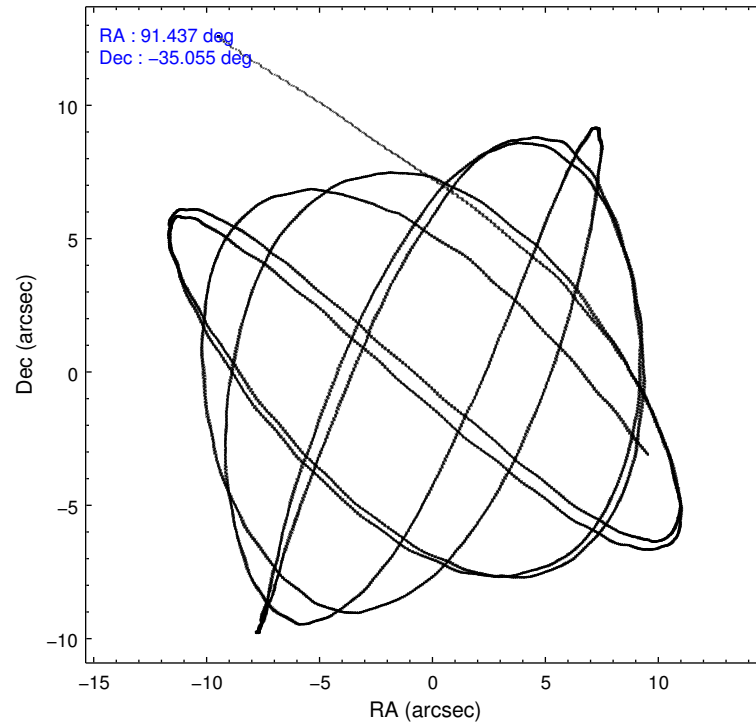
	ccd 0	ccd 1	ccd 2	ccd 3	ccd 6
level 1 events	29929	28688	32811	31812	33499
rejected events	26297	24670	29101	28142	29631
rejected %	87%	85%	88%	88%	88%

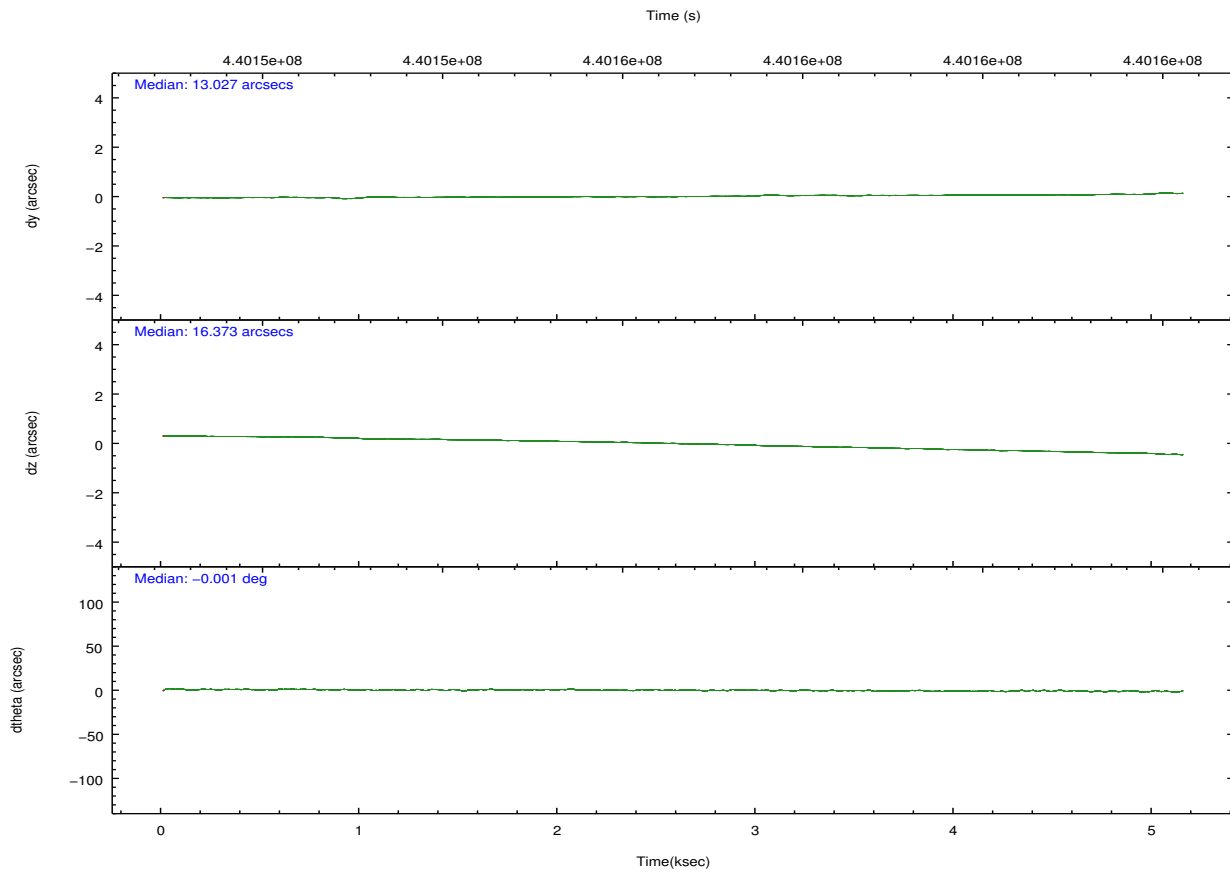
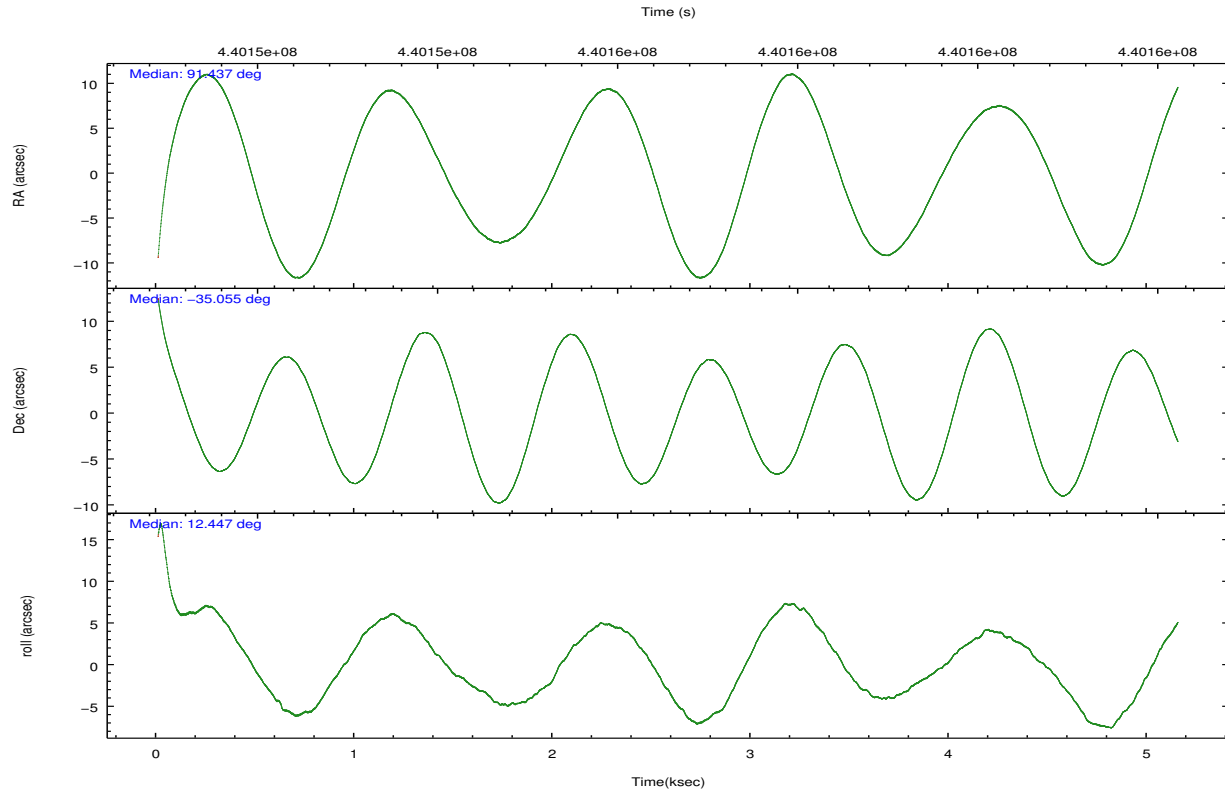
	ccd 0	ccd 1	ccd 2	ccd 3	ccd 6
grade 0 events	1257	1454	1464	1356	1379
	4%	5%	4%	4%	4%
grade 1 events	26	20	22	20	18
	0%	0%	0%	0%	0%
grade 2 events	935	913	861	846	834
	3%	3%	2%	2%	2%
grade 3 events	358	390	350	367	398
	1%	1%	1%	1%	1%
grade 4 events	373	395	376	375	376
	1%	1%	1%	1%	1%
grade 5 events	1407	1467	1282	1575	1527
	4%	5%	3%	4%	4%
grade 6 events	714	872	661	730	885
	2%	3%	2%	2%	2%
grade 7 events	24859	23177	27795	26543	28082
	83%	80%	84%	83%	83%

2.2 Compared Parameters

Parameter	Planned	Actual	Parameter	Planned	Actual
Instrument	ACIS	ACIS	Obspar format version number	7	7
Detector	ACIS-01236	ACIS-01236	Obspar file type	PREDICTED	ACTUAL
Grating	NONE	NONE	Obspar update status	NONE	UPDATED
Data mode	VFAINT	VFAINT	CCD I0 on	Y	Y
Observation mode	POINTING	POINTING	CCD I1 on	Y	Y
[deg] Pointing RA	91.412023	91.43673637610404	CCD I2 on	Y	Y
[deg] Pointing Dec	-35.073645	-35.05493636280607	CCD I3 on	Y	Y
[deg] Pointing Roll	12.236197	12.4591255527241	CCD S0 on	N	N
[mm] SIM focus pos	-0.782348	-0.7809083437167272	CCD S1 on	N	N
[mm] SIM defocus	0	0.001439871863259334	CCD S2 on	O1	Y
[mm] SIM translation stage pos	-233.592463	-233.5874344608287	CCD S3 on	N	N
[mm] SIM translation stage offset	0	-0.005018542100998502	CCD S4 on	N	N
[s] Observation start time (MET)	440152865.184000	440151716.22322	CCD S5 on	N	N
Observation start date	2011-12-13T08:39:59	2011-12-13T08:21:56	Number of optional ACIS chips dropped	0	0
[s] Observation end time (MET)	440157865.184000	440158435.61107	On-chip summing requested	N	N
Observation end date	2011-12-13T10:03:19	2011-12-13T10:13:55	Subarray requested	NONE	NONE
Read mode	TIMED	TIMED	Alternating exposures requested	N	N
			[s] Primary exposure time	0.000000	3.1

2.3 Aspect



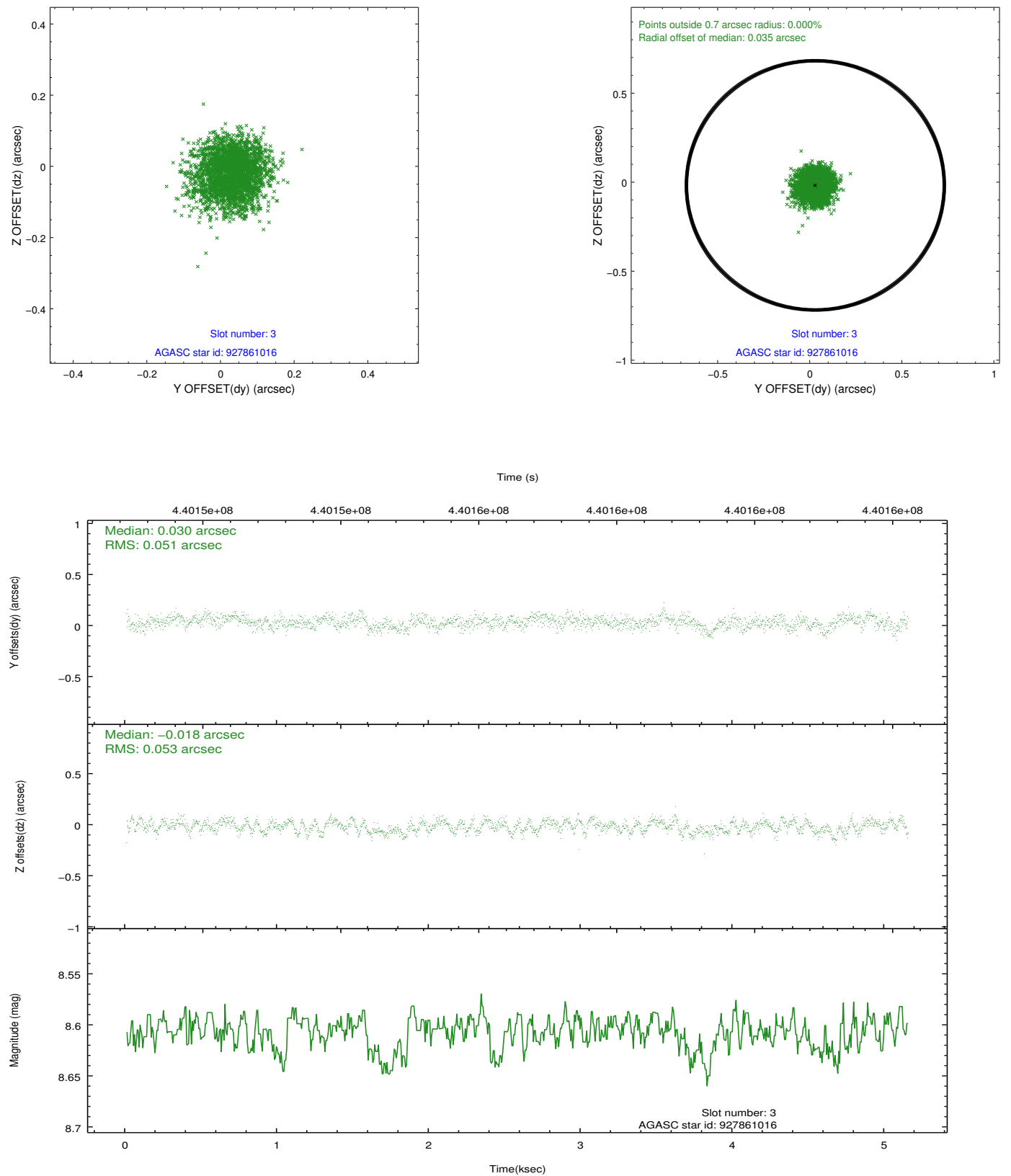


Slot Statistics

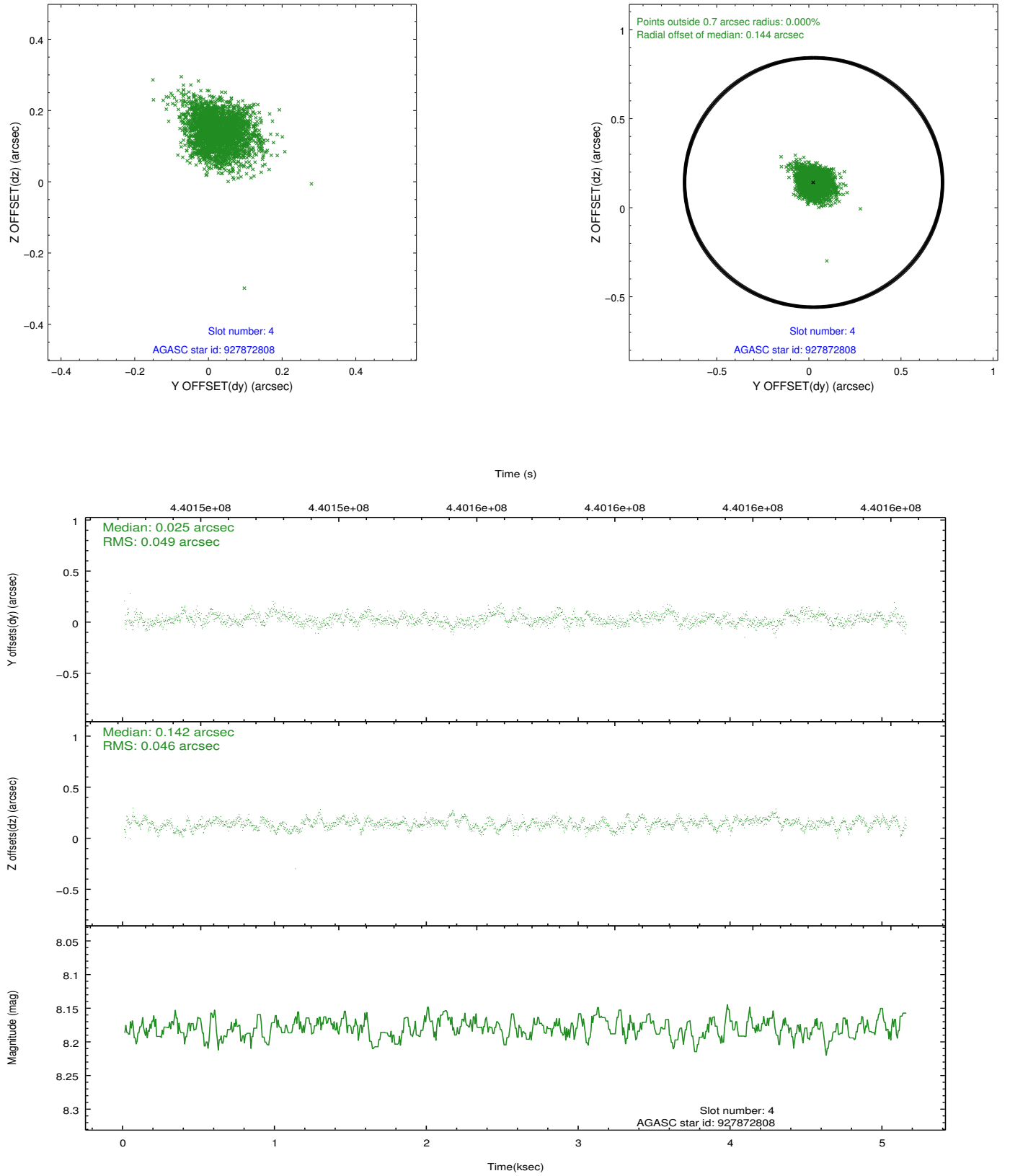
slot	status	id	mag	n_pts	med_dy	med_dz	dr1	dr2	ra	dec	mean_y	mean_z
0	FID	ACIS-I-1	7.03	1256	0.067	-0.051	0.007	0.012	0.000000	0.000000	926.53	-840.04
1	FID	ACIS-I-5	7.03	1256	-0.199	0.070	0.007	0.012	0.000000	0.000000	-1821.17	1057.01
2	FID	ACIS-I-6	7.03	1256	0.040	0.052	0.009	0.014	0.000000	0.000000	390.80	1702.80
3	GUIDE	927861016	8.61	2511	0.030	-0.018	0.079	0.123	90.996996	-35.118457	-1229.11	96.70
4	GUIDE	927872808	8.18	2512	0.025	0.142	0.071	0.116	91.871506	-35.224616	1204.46	-821.17
5	GUIDE	927872816	8.51	2511	-0.001	0.077	0.073	0.119	91.602635	-34.723224	818.74	1111.72
6	GUIDE	927873680	8.03	2512	-0.054	-0.194	0.073	0.114	91.920469	-34.486300	1921.66	1742.38
7	OMITTED		0.00	0	0.000	0.000	0.000	0.000	0.000000	0.000000	0.00	0.00

2.4 Star Slots

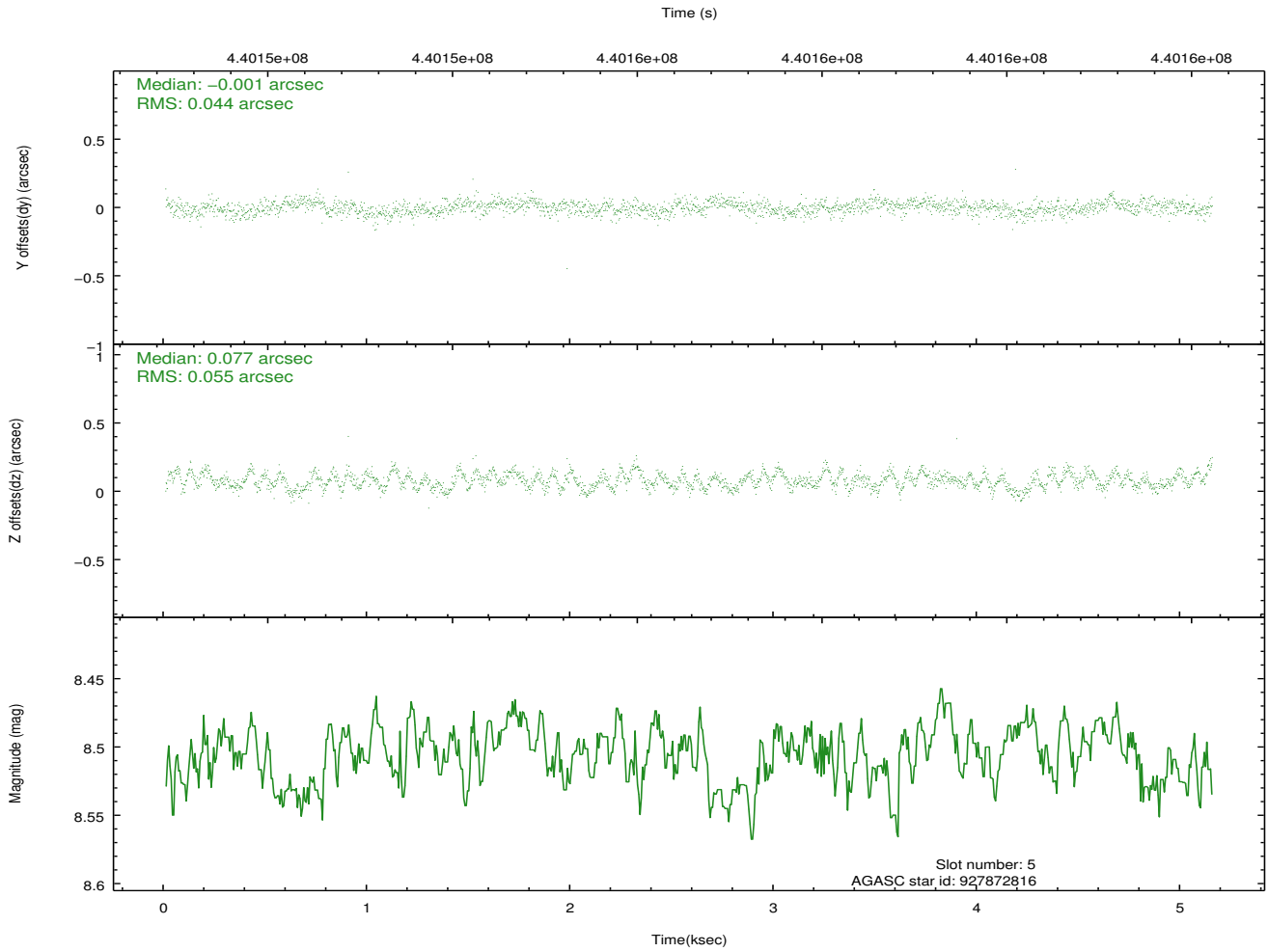
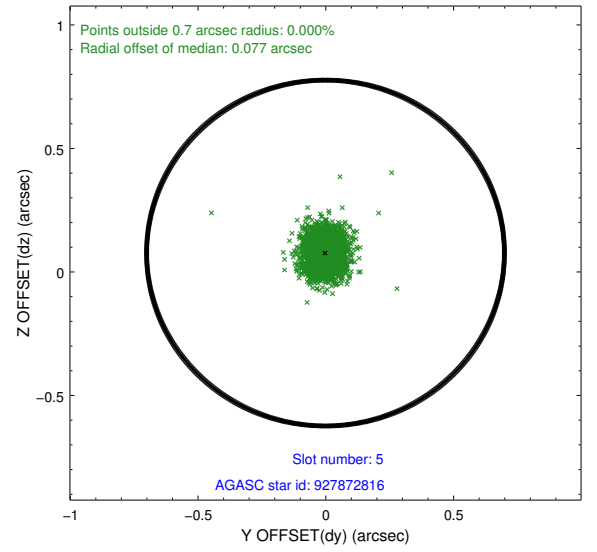
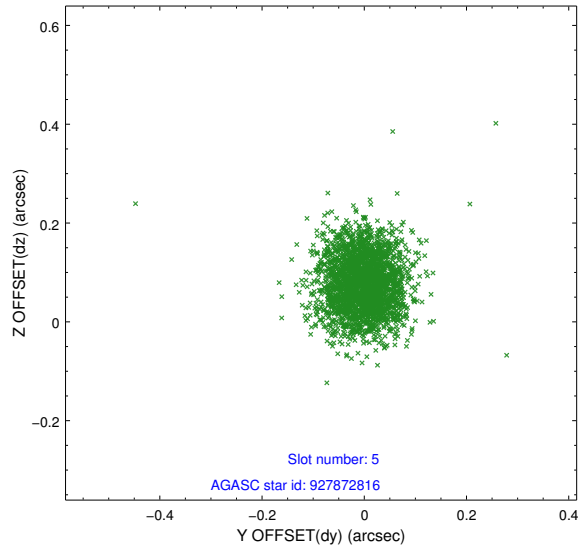
2.4.1 Slot 3



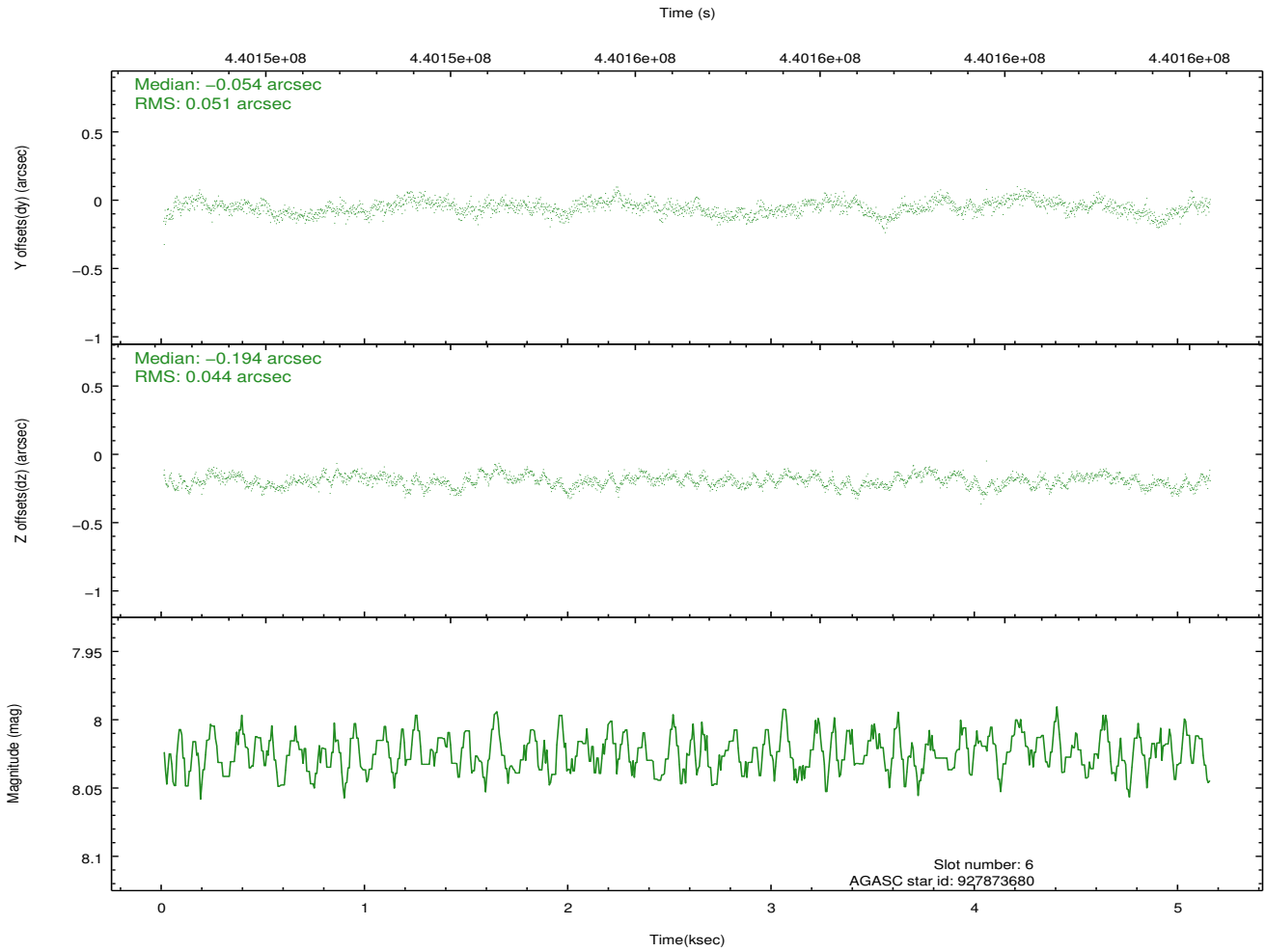
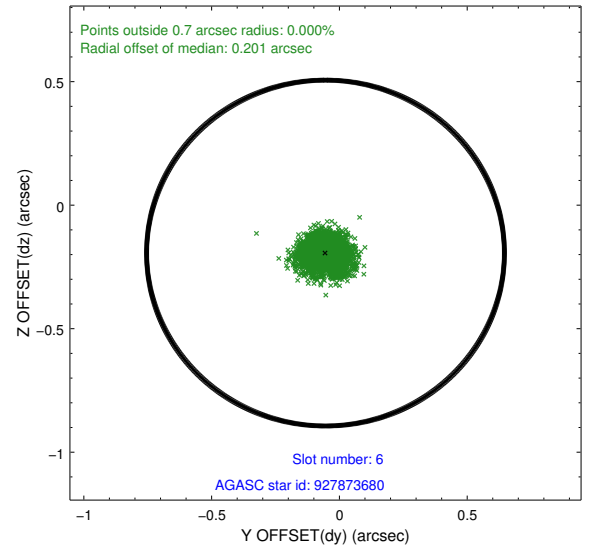
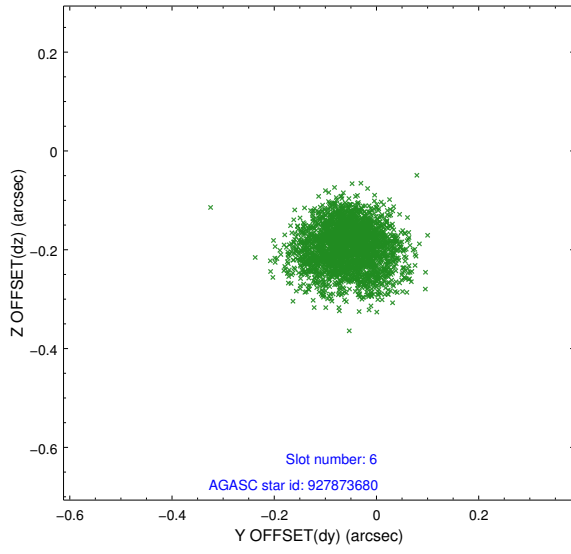
2.4.2 Slot 4



2.4.3 Slot 5

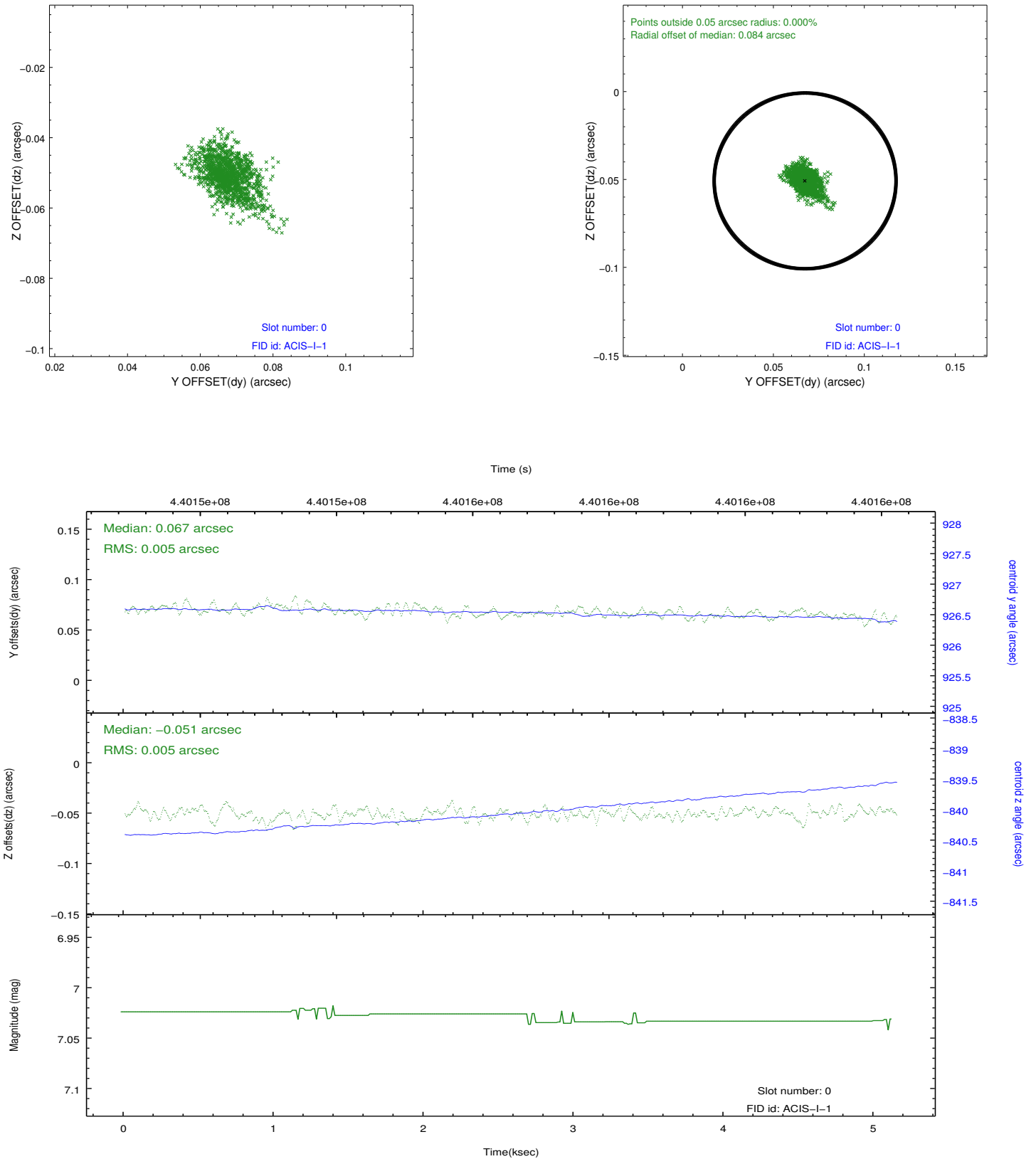


2.4.4 Slot 6

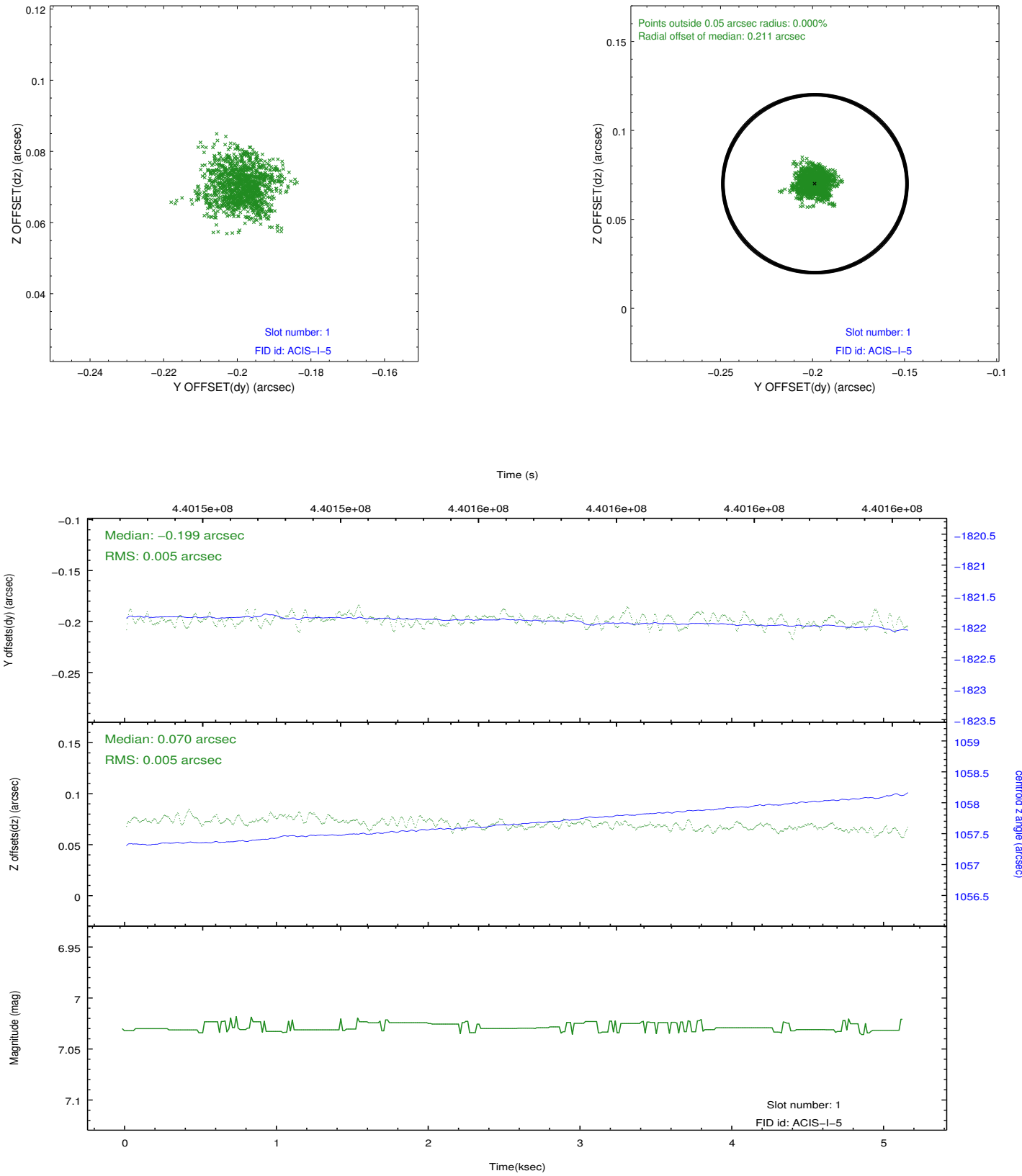


2.5 FID Slots

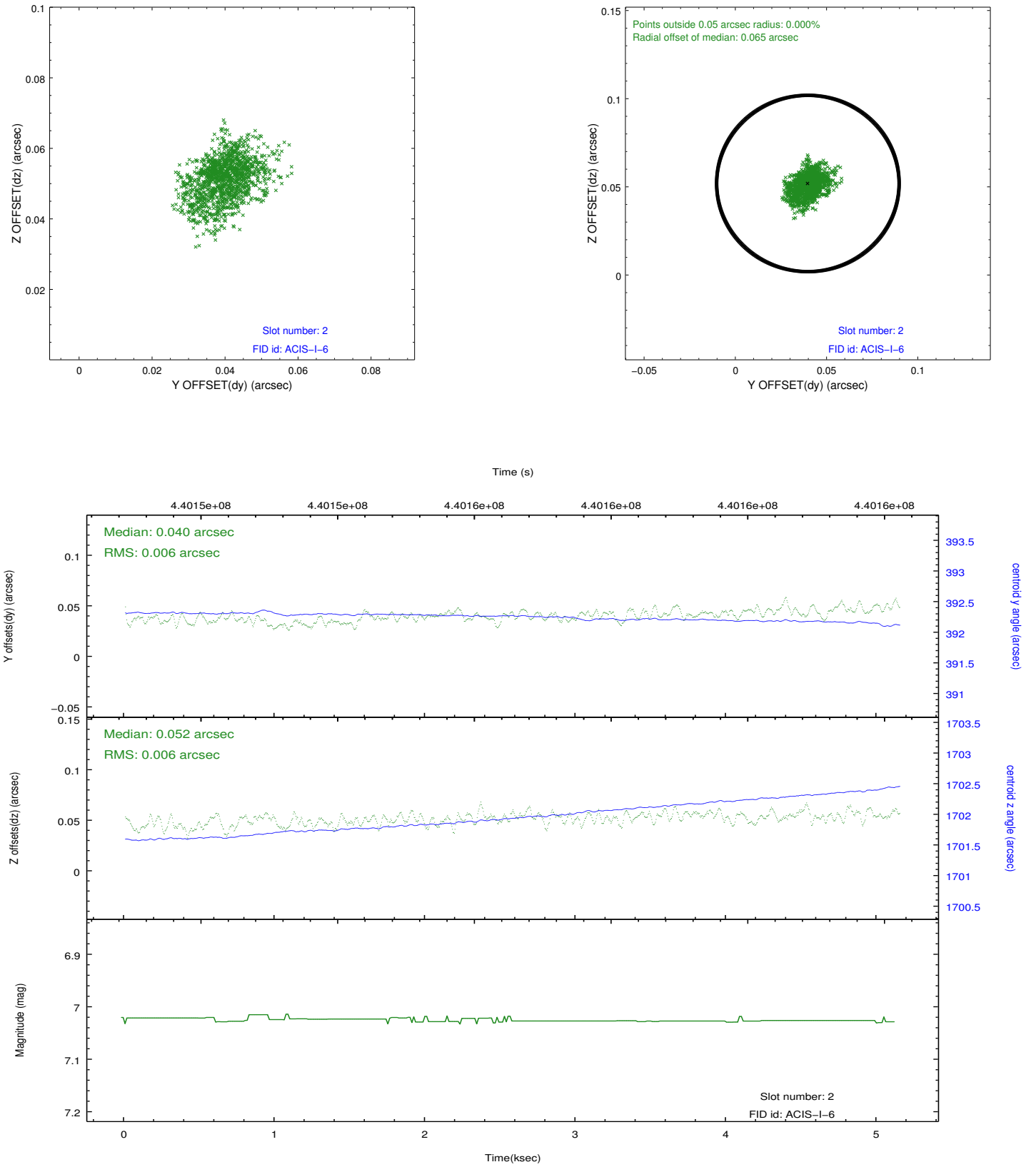
2.5.1 Slot 0



2.5.2 Slot 1



2.5.3 Slot 2



A Summary

A.1 Status

V&V Scientist	Jen Lauer
V&V Date (YYYY-MM-DD)	2012.02.29
V&V Edition	1
V&V Disposition and Status	OK
V&V Charge Time	5.0547470907569

A.2 Comments

The guide star in slot 7 was removed from the aspect solution due to poor data quality. The aspect solution is improved by the removal of this guide star from the solution.